



SEQUOIA ANALYTICAL

680 Chesapeake Drive • Redwood City, CA 94063
(415) 364-9600 • FAX (415) 364-9233

90 OCT 17 PM 12:39

FACSIMILE TRANSMISSION

TO

Name: Cynthia Wong
Company: Cherron
Fax #: (415) 842-9591

FROM

Elizabeth Hackl

SEQUOIA ANALYTICAL LABORATORY

Fax (415) 364-9233

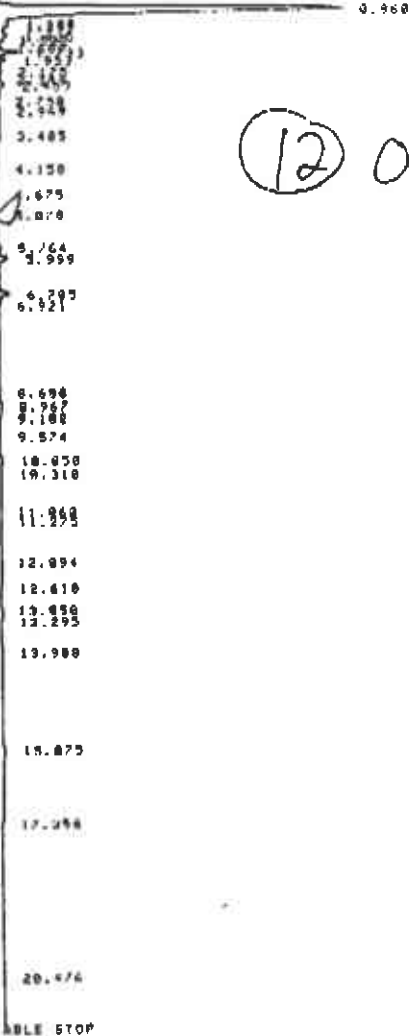
Date: 10/10/90

Number of Pages (including this page): 40

Here are the requested chromatograms from
Cherron St. # 95607. If you have any questions
please call me.

HEWLETT-PACKARD PART NUMBER 5181-1219 PRINT THIS SIDE

EPA 80158020
 for low-Med
 Boiling Point
 Hydrocarbons



(12) 0100287
 500 > FID

RUN# 175 JAN 9. 1981 07:06:20

RT	AREA	TYPE	WIDTH	AREA%
0.968	109951.76	PV	.137	77.00064
1.190	204868	VV	.052	.99830
1.241	321490	VV	.084	1.58571
1.435	387783	VV	.111	1.07460
1.522	117110	VV	.065	.56614
1.608	80034	VV	.078	.38691
1.731	333776	VV	.075	2.50442
1.733	240729	VV	.079	1.16496
2.175	153173	VV	.097	.71048
2.349	61697	VV	.072	.29328
2.459	361049	VV	.118	1.45584
2.750	49508	VV	.178	.23407
2.869	143237	VV	.090	.49424
3.485	101470	VV	.074	.49053
4.150	50559	VV	.103	.24461
4.675	16013	OV	.003	.09147
5.870	30095	PV	.161	.15094
5.704	188771	PV	.107	.82564
5.999	378406	VB	.093	1.59761
6.705	1427730	AV	.070	1.77777
6.991	34200	VV	.111	.16530
7.600	32000	PV	.097	.15061
8.967	180763	VV	.177	.61011
9.111	24418	VV	.110	.26066
9.574	24411	VV	.111	.11811
10.000	111111	AV	.150	.51771
10.100	111144	VV	.142	.66676
11.000	25100	AV	.101	.48701
11.175	12219	AV	.071	.09429
12.004	20500	AV	.071	.26802
12.610	35032	VV	.140	.66911
13.050	25050	VV	.156	.51251
13.385	9818	VV	.021	.21511
13.988	551901	VV	.727	6.0715
15.000	715271	VV	.991	6.0480
17.000	20100	VV	.511	.00911
17.256	22201	VV	.651	0.1000

EPA 8015/800
for low-Med
Boiling Permit
Hep plus bar low

(12) 0100287 PD
5007

HEWLETT-PACKARD PART NUMBER 5181-1219 PRINT THIS SIDE

PRINT THIS SIDE
IDE

DATE	TIME	OPERATOR	ANALYST	INSTRUMENT	REMARKS
01/15/80	10:00
01/15/80	10:05
01/15/80	10:10
01/15/80	10:15
01/15/80	10:20
01/15/80	10:25
01/15/80	10:30
01/15/80	10:35
01/15/80	10:40
01/15/80	10:45
01/15/80	10:50
01/15/80	10:55
01/15/80	11:00
01/15/80	11:05
01/15/80	11:10
01/15/80	11:15
01/15/80	11:20
01/15/80	11:25
01/15/80	11:30
01/15/80	11:35
01/15/80	11:40
01/15/80	11:45
01/15/80	11:50
01/15/80	11:55
01/15/80	12:00
01/15/80	12:05
01/15/80	12:10
01/15/80	12:15
01/15/80	12:20
01/15/80	12:25
01/15/80	12:30
01/15/80	12:35
01/15/80	12:40
01/15/80	12:45
01/15/80	12:50
01/15/80	12:55
01/15/80	13:00
01/15/80	13:05
01/15/80	13:10
01/15/80	13:15
01/15/80	13:20
01/15/80	13:25
01/15/80	13:30
01/15/80	13:35
01/15/80	13:40
01/15/80	13:45
01/15/80	13:50
01/15/80	13:55
01/15/80	14:00
01/15/80	14:05
01/15/80	14:10
01/15/80	14:15
01/15/80	14:20
01/15/80	14:25
01/15/80	14:30
01/15/80	14:35
01/15/80	14:40
01/15/80	14:45
01/15/80	14:50
01/15/80	14:55
01/15/80	15:00
01/15/80	15:05
01/15/80	15:10
01/15/80	15:15
01/15/80	15:20
01/15/80	15:25
01/15/80	15:30
01/15/80	15:35
01/15/80	15:40
01/15/80	15:45
01/15/80	15:50
01/15/80	15:55
01/15/80	16:00
01/15/80	16:05
01/15/80	16:10
01/15/80	16:15
01/15/80	16:20
01/15/80	16:25
01/15/80	16:30
01/15/80	16:35
01/15/80	16:40
01/15/80	16:45
01/15/80	16:50
01/15/80	16:55
01/15/80	17:00
01/15/80	17:05
01/15/80	17:10
01/15/80	17:15
01/15/80	17:20
01/15/80	17:25
01/15/80	17:30
01/15/80	17:35
01/15/80	17:40
01/15/80	17:45
01/15/80	17:50
01/15/80	17:55
01/15/80	18:00
01/15/80	18:05
01/15/80	18:10
01/15/80	18:15
01/15/80	18:20
01/15/80	18:25
01/15/80	18:30
01/15/80	18:35
01/15/80	18:40
01/15/80	18:45
01/15/80	18:50
01/15/80	18:55
01/15/80	19:00
01/15/80	19:05
01/15/80	19:10
01/15/80	19:15
01/15/80	19:20
01/15/80	19:25
01/15/80	19:30
01/15/80	19:35
01/15/80	19:40
01/15/80	19:45
01/15/80	19:50
01/15/80	19:55
01/15/80	20:00
01/15/80	20:05
01/15/80	20:10
01/15/80	20:15
01/15/80	20:20
01/15/80	20:25
01/15/80	20:30
01/15/80	20:35
01/15/80	20:40
01/15/80	20:45
01/15/80	20:50
01/15/80	20:55
01/15/80	21:00
01/15/80	21:05
01/15/80	21:10
01/15/80	21:15
01/15/80	21:20
01/15/80	21:25
01/15/80	21:30
01/15/80	21:35
01/15/80	21:40
01/15/80	21:45
01/15/80	21:50
01/15/80	21:55
01/15/80	22:00
01/15/80	22:05
01/15/80	22:10
01/15/80	22:15
01/15/80	22:20
01/15/80	22:25
01/15/80	22:30
01/15/80	22:35
01/15/80	22:40
01/15/80	22:45
01/15/80	22:50
01/15/80	22:55
01/15/80	23:00
01/15/80	23:05
01/15/80	23:10
01/15/80	23:15
01/15/80	23:20
01/15/80	23:25
01/15/80	23:30
01/15/80	23:35
01/15/80	23:40
01/15/80	23:45
01/15/80	23:50
01/15/80	23:55
01/15/80	24:00

PART NUMBER

HEWLETT-PACKARD

PRINT THIS SIDE

PART NUMBER 5181-1219

HEWLETT-PACKARD

20.000	10.000	10.000	10.000
21.000	11.000	11.000	11.000
22.000	12.000	12.000	12.000

TOTAL DREHT 00110
 BUL 1 67 105-1,000RT 100

JAN 7 1961 0011100
 1 200 8 300

13

P13

0100000

EPA 8015/8020
 for low-Med
 Boiling Point
 Hydrocarbons

0.926
1.250
1.575
1.900
2.225
2.550
2.875
3.200
3.525
3.850
4.175
4.500
4.825
5.150
5.475
5.800
6.125
6.450
6.775
7.100
7.425
7.750
8.075
8.400
8.725
9.050
9.375
9.700
10.025
10.350
10.675
11.000
11.325
11.650
11.975
12.300
12.625
12.950
13.275
13.600
13.925
14.250
14.575
14.900
15.225
15.550
15.875
16.200
16.525
16.850
17.175
17.500
17.825
18.150
18.475
18.800
19.125
19.450
19.775
20.100
20.425
20.750
21.075
21.400
21.725
22.050
22.375
22.700
23.025
23.350
23.675
24.000
24.325
24.650
24.975
25.300
25.625
25.950
26.275
26.600
26.925
27.250
27.575
27.900
28.225
28.550
28.875
29.200
29.525
29.850
30.175
30.500
30.825
31.150
31.475
31.800
32.125
32.450
32.775
33.100
33.425
33.750
34.075
34.400
34.725
35.050
35.375
35.700
36.025
36.350
36.675
37.000
37.325
37.650
37.975
38.300
38.625
38.950
39.275
39.600
39.925
40.250
40.575
40.900
41.225
41.550
41.875
42.200
42.525
42.850
43.175
43.500
43.825
44.150
44.475
44.800
45.125
45.450
45.775
46.100
46.425
46.750
47.075
47.400
47.725
48.050
48.375
48.700
49.025
49.350
49.675
50.000
50.325
50.650
50.975
51.300
51.625
51.950
52.275
52.600
52.925
53.250
53.575
53.900
54.225
54.550
54.875
55.200
55.525
55.850
56.175
56.500
56.825
57.150
57.475
57.800
58.125
58.450
58.775
59.100
59.425
59.750
60.075
60.400
60.725
61.050
61.375
61.700
62.025
62.350
62.675
63.000
63.325
63.650
63.975
64.300
64.625
64.950
65.275
65.600
65.925
66.250
66.575
66.900
67.225
67.550
67.875
68.200
68.525
68.850
69.175
69.500
69.825
70.150
70.475
70.800
71.125
71.450
71.775
72.100
72.425
72.750
73.075
73.400
73.725
74.050
74.375
74.700
75.025
75.350
75.675
76.000
76.325
76.650
76.975
77.300
77.625
77.950
78.275
78.600
78.925
79.250
79.575
79.900
80.225
80.550
80.875
81.200
81.525
81.850
82.175
82.500
82.825
83.150
83.475
83.800
84.125
84.450
84.775
85.100
85.425
85.750
86.075
86.400
86.725
87.050
87.375
87.700
88.025
88.350
88.675
89.000
89.325
89.650
89.975
90.300
90.625
90.950
91.275
91.600
91.925
92.250
92.575
92.900
93.225
93.550
93.875
94.200
94.525
94.850
95.175
95.500
95.825
96.150
96.475
96.800
97.125
97.450
97.775
98.100
98.425
98.750
99.075
99.400
99.725
100.050
100.375
100.700
101.025
101.350
101.675
102.000
102.325
102.650
102.975
103.300
103.625
103.950
104.275
104.600
104.925
105.250
105.575
105.900
106.225
106.550
106.875
107.200
107.525
107.850
108.175
108.500
108.825
109.150
109.475
109.800
110.125
110.450
110.775
111.100
111.425
111.750
112.075
112.400
112.725
113.050
113.375
113.700
114.025
114.350
114.675
115.000
115.325
115.650
115.975
116.300
116.625
116.950
117.275
117.600
117.925
118.250
118.575
118.900
119.225
119.550
119.875
120.200
120.525
120.850
121.175
121.500
121.825
122.150
122.475
122.800
123.125
123.450
123.775
124.100
124.425
124.750
125.075
125.400
125.725
126.050
126.375
126.700
127.025
127.350
127.675
128.000
128.325
128.650
128.975
129.300
129.625
129.950
130.275
130.600
130.925
131.250
131.575
131.900
132.225
132.550
132.875
133.200
133.525
133.850
134.175
134.500
134.825
135.150
135.475
135.800
136.125
136.450
136.775
137.100
137.425
137.750
138.075
138.400
138.725
139.050
139.375
139.700
140.025
140.350
140.675
141.000
141.325
141.650
141.975
142.300
142.625
142.950
143.275
143.600
143.925
144.250
144.575
144.900
145.225
145.550
145.875
146.200
146.525
146.850
147.175
147.500
147.825
148.150
148.475
148.800
149.125
149.450
149.775
150.100
150.425
150.750
151.075
151.400
151.725
152.050
152.375
152.700
153.025
153.350
153.675
154.000
154.325
154.650
154.975
155.300
155.625
155.950
156.275
156.600
156.925
157.250
157.575
157.900
158.225
158.550
158.875
159.200
159.525
159.850
160.175
160.500
160.825
161.150
161.475
161.800
162.125
162.450
162.775
163.100
163.425
163.750
164.075
164.400
164.725
165.050
165.375
165.700
166.025
166.350
166.675
167.000
167.325
167.650
167.975
168.300
168.625
168.950
169.275
169.600
169.925
170.250
170.575
170.900
171.225
171.550
171.875
172.200
172.525
172.850
173.175
173.500
173.825
174.150
174.475
174.800
175.125
175.450
175.775
176.100
176.425
176.750
177.075
177.400
177.725
178.050
178.375
178.700
179.025
179.350
179.675
180.000
180.325
180.650
180.975
181.300
181.625
181.950
182.275
182.600
182.925
183.250
183.575
183.900
184.225
184.550
184.875
185.200
185.525
185.850
186.175
186.500
186.825
187.150
187.475
187.800
188.125
188.450
188.775
189.100
189.425
189.750
190.075
190.400
190.725
191.050
191.375
191.700
192.025
192.350
192.675
193.000
193.325
193.650
193.975
194.300
194.625
194.950
195.275
195.600
195.925
196.250
196.575
196.900
197.225
197.550
197.875
198.200
198.525
198.850
199.175
199.500
199.825
200.150
200.475
200.800
201.125
201.450
201.775
202.100
202.425
202.750
203.075
203.400
203.725
204.050
204.375
204.700
205.025
205.350
205.675
206.000
206.325
206.650
206.975
207.300
207.625
207.950
208.275
208.600
208.925
209.250
209.575
209.900
210.225
210.550
210.875
211.200
211.525
211.850
212.175
212.500
212.825
213.150
213.475
213.800
214.125
214.450
214.775
215.100
215.425
215.750
216.075
216.400
216.725
217.050
217.375
217.700
218.025
218.350
218.675
219.000
219.325
219.650
219.975
220.300
220.625
220.950
221.275
221.600
221.925
222.250
222.575
222.900
223.225
223.550
223.875
224.200
224.525
224.850
225.175
225.500
225.825
226.150
226.475
226.800
227.125
227.450
227.775
228.100
228.425
228.750
229.075
229.400
229

0.964

00-010288
5007

FID

EPAS 80158020
per Low-Med.
Boiling Point
Hydrocarbons

1.999
2.125
3.351
3.490
4.147
4.675
5.083
6.000
6.785
8.317
8.611
9.185
10.046
10.310
11.458
11.521
12.683
13.064
13.298
17.359
20.494

PRINT THIS SIDE
PART NUMBER 5181-1219
HEWLETT-PACKARD

TIMETABLE STOP

RUN# 176 JAN 9, 1993 08111109

RT	AREA	TYPE	WIDTH	AREA
1.999	15423216	PV	.127	80.09958
2.125	118815	VV	.042	.61917
2.243	274116	VV	.078	1.42094
2.437	362736	VV	.116	1.09101
2.674	18385	VV	.082	.38436
2.795	523821	VV	.074	2.73846
2.954	279536	VV	.082	1.43719
3.176	137588	VV	.093	.71677
3.345	36487	VV	.065	.19820
3.463	299795	VV	.119	1.56280
3.763	42501	VV	.115	.22155
3.974	84852	VV	.097	.44232
3.478	244784	VV	.088	1.32774
4.147	32943	VP	.187	.17171
4.675	25424	GV	.084	.13253
5.083	18984	PV	.115	.09894
5.704	188884	PV	.109	.52548
6.000	242841	VV	.095	1.26173
6.785	72541	GV	.106	.37015
6.917	28554	VP	.102	.18715
8.611	23687	PV	.101	.12377
8.831	14712	VV	.087	.07072
8.745	72771	VV	.125	.37935
9.185	32528	VV	.136	.17476
10.046	61227	GV	.181	.33012
10.310	81470	VV	.178	.12474
11.458	15766	PV	.115	.08418
11.271	54033	VV	.180	.28194
11.819	17534	VF	.111	.08148
12.683	28048	PV	.106	.18475
13.243	28845	VV	.113	.18471
13.884	36318	FF	.194	.51212
15.705	36864	GV	.128	.19217
18.678	155113	VF	.178	.00855
17.359	38412	VV	.144	.28824
20.494	23744	VD	.101	.12171

00-20988-1-001374
LUL FACTOR 1-1-88

ID=415 364 9233

10-11-90 05:42 SEQUOIA ANALYTIC

P.04

HEWLETT-PACKARD PART NUMBER 5181

HEWLETT-PACKARD PART NUMBER 5181-1219 PRINT THIS SIDE

EPA 8015/8020
for low-Med
Boiling Point
Hydrocarbons

0.969

TIME TABLE

0.484
0.714
0.969
1.108
1.247
1.386
1.525
1.664
1.803
1.942
2.081
2.220
2.359
2.498
2.637
2.776
2.915
3.054
3.193
3.332
3.471
3.610
3.749
3.888
4.027
4.166
4.305
4.444
4.583
4.722
4.861
5.000
5.139
5.278
5.417
5.556
5.695
5.834
5.973
6.112
6.251
6.390
6.529
6.668
6.807
6.946
7.085
7.224
7.363
7.502
7.641
7.780
7.919
8.058
8.197
8.336
8.475
8.614
8.753
8.892
9.031
9.170
9.309
9.448
9.587
9.726
9.865
10.004
10.143
10.282
10.421
10.560
10.699
10.838
10.977
11.116
11.255
11.394
11.533
11.672
11.811
11.950
12.089
12.228
12.367
12.506
12.645
12.784
12.923
13.062
13.201
13.340
13.479
13.618
13.757
13.896
14.035
14.174
14.313
14.452
14.591
14.730
14.869
15.008
15.147
15.286
15.425
15.564
15.703
15.842
15.981
16.120
16.259
16.398
16.537
16.676
16.815
16.954
17.093
17.232
17.371
17.510
17.649
17.788
17.927
18.066
18.205
18.344
18.483
18.622
18.761
18.900
19.039
19.178
19.317
19.456
19.595
19.734
19.873
20.012
20.151
20.290
20.429
20.568
20.707
20.846
20.985
21.124
21.263
21.402
21.541
21.680
21.819
21.958
22.097
22.236
22.375
22.514
22.653
22.792
22.931
23.070
23.209
23.348
23.487
23.626
23.765
23.904
24.043
24.182
24.321
24.460
24.599
24.738
24.877
25.016
25.155
25.294
25.433
25.572
25.711
25.850
25.989
26.128
26.267
26.406
26.545
26.684
26.823
26.962
27.101
27.240
27.379
27.518
27.657
27.796
27.935
28.074
28.213
28.352
28.491
28.630
28.769
28.908
29.047
29.186
29.325
29.464
29.603
29.742
29.881
30.020
30.159
30.298
30.437
30.576
30.715
30.854
30.993
31.132
31.271
31.410
31.549
31.688
31.827
31.966
32.105
32.244
32.383
32.522
32.661
32.800
32.939
33.078
33.217
33.356
33.495
33.634
33.773
33.912
34.051
34.190
34.329
34.468
34.607
34.746
34.885
35.024
35.163
35.302
35.441
35.580
35.719
35.858
35.997
36.136
36.275
36.414
36.553
36.692
36.831
36.970
37.109
37.248
37.387
37.526
37.665
37.804
37.943
38.082
38.221
38.360
38.499
38.638
38.777
38.916
39.055
39.194
39.333
39.472
39.611
39.750
39.889
40.028
40.167
40.306
40.445
40.584
40.723
40.862
41.001
41.140
41.279
41.418
41.557
41.696
41.835
41.974
42.113
42.252
42.391
42.530
42.669
42.808
42.947
43.086
43.225
43.364
43.503
43.642
43.781
43.920
44.059
44.198
44.337
44.476
44.615
44.754
44.893
45.032
45.171
45.310
45.449
45.588
45.727
45.866
46.005
46.144
46.283
46.422
46.561
46.700
46.839
46.978
47.117
47.256
47.395
47.534
47.673
47.812
47.951
48.090
48.229
48.368
48.507
48.646
48.785
48.924
49.063
49.202
49.341
49.480
49.619
49.758
49.897
50.036
50.175
50.314
50.453
50.592
50.731
50.870
51.009
51.148
51.287
51.426
51.565
51.704
51.843
51.982
52.121
52.260
52.399
52.538
52.677
52.816
52.955
53.094
53.233
53.372
53.511
53.650
53.789
53.928
54.067
54.206
54.345
54.484
54.623
54.762
54.901
55.040
55.179
55.318
55.457
55.596
55.735
55.874
56.013
56.152
56.291
56.430
56.569
56.708
56.847
56.986
57.125
57.264
57.403
57.542
57.681
57.820
57.959
58.098
58.237
58.376
58.515
58.654
58.793
58.932
59.071
59.210
59.349
59.488
59.627
59.766
59.905
60.044
60.183
60.322
60.461
60.600
60.739
60.878
61.017
61.156
61.295
61.434
61.573
61.712
61.851
61.990
62.129
62.268
62.407
62.546
62.685
62.824
62.963
63.102
63.241
63.380
63.519
63.658
63.797
63.936
64.075
64.214
64.353
64.492
64.631
64.770
64.909
65.048
65.187
65.326
65.465
65.604
65.743
65.882
66.021
66.160
66.299
66.438
66.577
66.716
66.855
66.994
67.133
67.272
67.411
67.550
67.689
67.828
67.967
68.106
68.245
68.384
68.523
68.662
68.801
68.940
69.079
69.218
69.357
69.496
69.635
69.774
69.913
70.052
70.191
70.330
70.469
70.608
70.747
70.886
71.025
71.164
71.303
71.442
71.581
71.720
71.859
71.998
72.137
72.276
72.415
72.554
72.693
72.832
72.971
73.110
73.249
73.388
73.527
73.666
73.805
73.944
74.083
74.222
74.361
74.500
74.639
74.778
74.917
75.056
75.195
75.334
75.473
75.612
75.751
75.890
76.029
76.168
76.307
76.446
76.585
76.724
76.863
77.002
77.141
77.280
77.419
77.558
77.697
77.836
77.975
78.114
78.253
78.392
78.531
78.670
78.809
78.948
79.087
79.226
79.365
79.504
79.643
79.782
79.921
80.060
80.199
80.338
80.477
80.616
80.755
80.894
81.033
81.172
81.311
81.450
81.589
81.728
81.867
82.006
82.145
82.284
82.423
82.562
82.701
82.840
82.979
83.118
83.257
83.396
83.535
83.674
83.813
83.952
84.091
84.230
84.369
84.508
84.647
84.786
84.925
85.064
85.203
85.342
85.481
85.620
85.759
85.898
86.037
86.176
86.315
86.454
86.593
86.732
86.871
87.010
87.149
87.288
87.427
87.566
87.705
87.844
87.983
88.122
88.261
88.400
88.539
88.678
88.817
88.956
89.095
89.234
89.373
89.512
89.651
89.790
89.929
90.068
90.207
90.346
90.485
90.624
90.763
90.902
91.041
91.180
91.319
91.458
91.597
91.736
91.875
92.014
92.153
92.292
92.431
92.570
92.709
92.848
92.987
93.126
93.265
93.404
93.543
93.682
93.821
93.960
94.099
94.238
94.377
94.516
94.655
94.794
94.933
95.072
95.211
95.350
95.489
95.628
95.767
95.906
96.045
96.184
96.323
96.462
96.601
96.740
96.879
97.018
97.157
97.296
97.435
97.574
97.713
97.852
97.991
98.130
98.269
98.408
98.547
98.686
98.825
98.964
99.103
99.242
99.381
99.520
99.659
99.798
99.937
100.076

14
0100289
500T
FID

NUMB 177 JUN 7. 1961 88:45:46

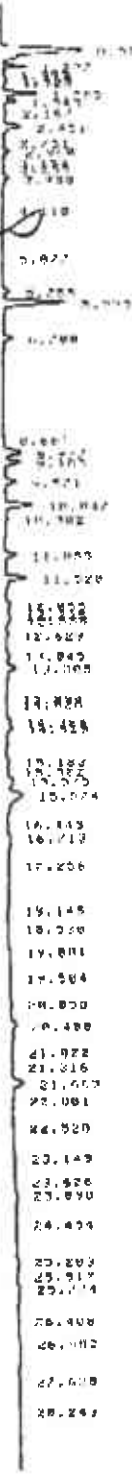
AREAS:

RT	AREA	TYPE	WIDTH	AREA*
0.960	14605400	PV	.107	56.62992
1.133	117151	VV	.047	1.44771
1.242	317059	VV	.044	1.24966
1.436	472318	VV	.112	1.46644
1.675	129766	VV	.075	.51309
1.797	529849	VV	.075	2.11213
1.991	324366	VV	.112	1.27982
2.180	259358	VV	.128	1.69544
2.456	330698	VV	.128	1.32811
2.768	429948	VV	.138	1.01274
2.967	122192	VV	.115	1.4

(14)
 0100500
 P/D

PRINT THIS SIDE
 PLOT NUMBER 5181-1219
 HEWLETT-PACKARD
 PART NUMBER 5181-1219
 PRINT THIS SIDE

EPA 8015/8020
 for Low-Med.
 Boiling Point
 Hydrocarbons



RET	AREA	TYPE	NUM	NAME
1.21	11075	YY	1	1.21
1.27	12521	VV	1	1.27
1.30	2316	YY	1	1.30
1.40	2711	YY	1	1.40
1.53	3775	YY	1	1.53
1.78	2710	VV	1	1.78
1.93	1202	VV	1	1.93
2.16	1019	VV	1	2.16
2.40	1914	VV	1	2.40
2.72	1502	VV	1	2.72
2.87	1202	VV	1	2.87
3.11	1019	VV	1	3.11
3.35	1019	VV	1	3.35
3.59	1019	VV	1	3.59
3.83	1019	VV	1	3.83
4.07	1019	VV	1	4.07
4.31	1019	VV	1	4.31
4.55	1019	VV	1	4.55
4.79	1019	VV	1	4.79
5.03	1019	VV	1	5.03
5.27	1019	VV	1	5.27
5.51	1019	VV	1	5.51
5.75	1019	VV	1	5.75
6.00	1019	VV	1	6.00
6.24	1019	VV	1	6.24
6.48	1019	VV	1	6.48
6.72	1019	VV	1	6.72
6.96	1019	VV	1	6.96
7.20	1019	VV	1	7.20
7.44	1019	VV	1	7.44
7.68	1019	VV	1	7.68
7.92	1019	VV	1	7.92
8.16	1019	VV	1	8.16
8.40	1019	VV	1	8.40
8.64	1019	VV	1	8.64
8.88	1019	VV	1	8.88
9.12	1019	VV	1	9.12
9.36	1019	VV	1	9.36
9.60	1019	VV	1	9.60
9.84	1019	VV	1	9.84
10.08	1019	VV	1	10.08
10.32	1019	VV	1	10.32
10.56	1019	VV	1	10.56
10.80	1019	VV	1	10.80
11.04	1019	VV	1	11.04
11.28	1019	VV	1	11.28
11.52	1019	VV	1	11.52
11.76	1019	VV	1	11.76
12.00	1019	VV	1	12.00
12.24	1019	VV	1	12.24
12.48	1019	VV	1	12.48
12.72	1019	VV	1	12.72
12.96	1019	VV	1	12.96
13.20	1019	VV	1	13.20
13.44	1019	VV	1	13.44
13.68	1019	VV	1	13.68
13.92	1019	VV	1	13.92
14.16	1019	VV	1	14.16
14.40	1019	VV	1	14.40
14.64	1019	VV	1	14.64
14.88	1019	VV	1	14.88
15.12	1019	VV	1	15.12
15.36	1019	VV	1	15.36
15.60	1019	VV	1	15.60
15.84	1019	VV	1	15.84
16.08	1019	VV	1	16.08
16.32	1019	VV	1	16.32
16.56	1019	VV	1	16.56
16.80	1019	VV	1	16.80
17.04	1019	VV	1	17.04
17.28	1019	VV	1	17.28
17.52	1019	VV	1	17.52
17.76	1019	VV	1	17.76
18.00	1019	VV	1	18.00
18.24	1019	VV	1	18.24
18.48	1019	VV	1	18.48
18.72	1019	VV	1	18.72
18.96	1019	VV	1	18.96
19.20	1019	VV	1	19.20
19.44	1019	VV	1	19.44
19.68	1019	VV	1	19.68
19.92	1019	VV	1	19.92
20.16	1019	VV	1	20.16
20.40	1019	VV	1	20.40
20.64	1019	VV	1	20.64
20.88	1019	VV	1	20.88
21.12	1019	VV	1	21.12
21.36	1019	VV	1	21.36
21.60	1019	VV	1	21.60
21.84	1019	VV	1	21.84
22.08	1019	VV	1	22.08
22.32	1019	VV	1	22.32
22.56	1019	VV	1	22.56
22.80	1019	VV	1	22.80
23.04	1019	VV	1	23.04
23.28	1019	VV	1	23.28
23.52	1019	VV	1	23.52
23.76	1019	VV	1	23.76
24.00	1019	VV	1	24.00
24.24	1019	VV	1	24.24
24.48	1019	VV	1	24.48
24.72	1019	VV	1	24.72
24.96	1019	VV	1	24.96
25.20	1019	VV	1	25.20

4.740 114428 VP .124 .12971
 11.090 1314198 PP .141 .05324
 21.335 1045279 I PH .117 .05347

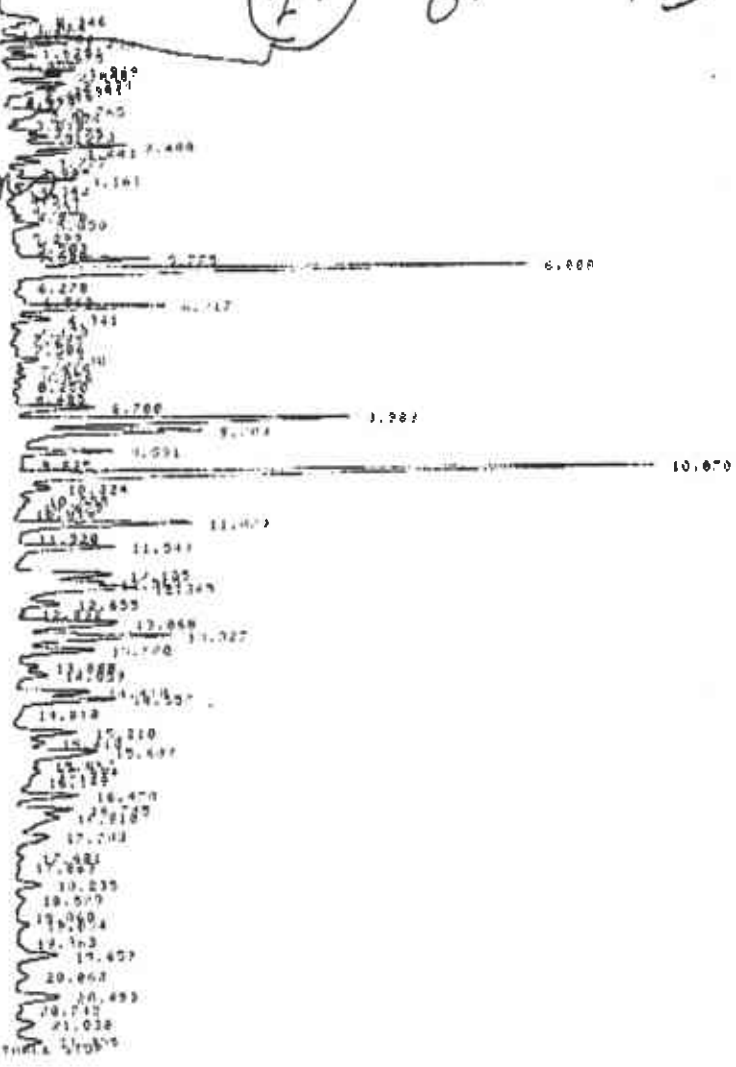
TOTAL HPPH=3.665E+00 - 1,562
 MUL FACTOR=1.000E+00

4 RUN 8 190 JUN 9 1991 1411915
 STUAT

EPA-8015/8020
 for low-Med.
 Boiling Point
 Hydrocarbon

27

0100290 FID



RUN 8 190 JUN 9 1991 1411915

NUMBER	AREA	TYPE	HIGHT	AREA%
07728	143	VP	.143	.76953
408049	868	VP	.868	.18729
87240	837	VP	.837	.02198
792191	884	VP	.884	.32467
1734882	876	VP	.876	.70736
409935	857	VP	.857	.20012
809786	874	VP	.874	.20960
272712	881	VP	.881	.11156
1986352	891	VP	.891	.89039
1686457	890	VP	.890	.47701
2195682	100	VP	.100	.00017
1437829	873	VP	.873	.58912
898823	867	VP	.867	.21181
159292	876	VP	.876	.00516
286719	876	VP	.876	.00456
1861463	897	VP	.897	.75119
1174752	105	VP	.105	.42894
313311	938	VP	.938	.71081
104251	887	VP	.887	.42800
1779148	111	VP	.111	.72617
437264	187	VP	.187	1.79841
2183133	485	VP	.485	.30433
1363348	183	VP	.183	.85778
1214929	181	VP	.181	.50600
2175885	876	VP	.876	.07103
719342	102	VP	.102	.09427
344152	859	VP	.859	.14078
573210	116	VP	.116	.21444
118	118	VP	.118	.30881

HEWLETT-PACKARD PART
HEWLETT-PACKARD PART

16.114	16.114	YY	1.100	1.0000
16.115	16.115	YY	1.100	1.0000
16.116	16.116	YY	1.100	1.0000
16.117	16.117	YY	1.100	1.0000
16.118	16.118	YY	1.100	1.0000
16.119	16.119	YY	1.100	1.0000
16.120	16.120	YY	1.100	1.0000

FORM 100-1-10000000
MIL T-100-1-10000000

START

27
PID
0100290
257

EPA 8013/8020
for Low-Med.
Boiling Point
Hydrocarbons

16.114	16.114	YY	1.100	1.0000
16.115	16.115	YY	1.100	1.0000
16.116	16.116	YY	1.100	1.0000
16.117	16.117	YY	1.100	1.0000
16.118	16.118	YY	1.100	1.0000
16.119	16.119	YY	1.100	1.0000
16.120	16.120	YY	1.100	1.0000
16.121	16.121	YY	1.100	1.0000
16.122	16.122	YY	1.100	1.0000
16.123	16.123	YY	1.100	1.0000
16.124	16.124	YY	1.100	1.0000
16.125	16.125	YY	1.100	1.0000
16.126	16.126	YY	1.100	1.0000
16.127	16.127	YY	1.100	1.0000
16.128	16.128	YY	1.100	1.0000
16.129	16.129	YY	1.100	1.0000
16.130	16.130	YY	1.100	1.0000
16.131	16.131	YY	1.100	1.0000
16.132	16.132	YY	1.100	1.0000
16.133	16.133	YY	1.100	1.0000
16.134	16.134	YY	1.100	1.0000
16.135	16.135	YY	1.100	1.0000
16.136	16.136	YY	1.100	1.0000
16.137	16.137	YY	1.100	1.0000
16.138	16.138	YY	1.100	1.0000
16.139	16.139	YY	1.100	1.0000
16.140	16.140	YY	1.100	1.0000
16.141	16.141	YY	1.100	1.0000
16.142	16.142	YY	1.100	1.0000
16.143	16.143	YY	1.100	1.0000
16.144	16.144	YY	1.100	1.0000
16.145	16.145	YY	1.100	1.0000
16.146	16.146	YY	1.100	1.0000
16.147	16.147	YY	1.100	1.0000
16.148	16.148	YY	1.100	1.0000
16.149	16.149	YY	1.100	1.0000
16.150	16.150	YY	1.100	1.0000
16.151	16.151	YY	1.100	1.0000
16.152	16.152	YY	1.100	1.0000
16.153	16.153	YY	1.100	1.0000
16.154	16.154	YY	1.100	1.0000
16.155	16.155	YY	1.100	1.0000
16.156	16.156	YY	1.100	1.0000
16.157	16.157	YY	1.100	1.0000
16.158	16.158	YY	1.100	1.0000
16.159	16.159	YY	1.100	1.0000
16.160	16.160	YY	1.100	1.0000
16.161	16.161	YY	1.100	1.0000
16.162	16.162	YY	1.100	1.0000
16.163	16.163	YY	1.100	1.0000
16.164	16.164	YY	1.100	1.0000
16.165	16.165	YY	1.100	1.0000
16.166	16.166	YY	1.100	1.0000
16.167	16.167	YY	1.100	1.0000
16.168	16.168	YY	1.100	1.0000
16.169	16.169	YY	1.100	1.0000
16.170	16.170	YY	1.100	1.0000
16.171	16.171	YY	1.100	1.0000
16.172	16.172	YY	1.100	1.0000
16.173	16.173	YY	1.100	1.0000
16.174	16.174	YY	1.100	1.0000
16.175	16.175	YY	1.100	1.0000
16.176	16.176	YY	1.100	1.0000
16.177	16.177	YY	1.100	1.0000
16.178	16.178	YY	1.100	1.0000
16.179	16.179	YY	1.100	1.0000
16.180	16.180	YY	1.100	1.0000
16.181	16.181	YY	1.100	1.0000
16.182	16.182	YY	1.100	1.0000
16.183	16.183	YY	1.100	1.0000
16.184	16.184	YY	1.100	1.0000
16.185	16.185	YY	1.100	1.0000
16.186	16.186	YY	1.100	1.0000
16.187	16.187	YY	1.100	1.0000
16.188	16.188	YY	1.100	1.0000
16.189	16.189	YY	1.100	1.0000
16.190	16.190	YY	1.100	1.0000
16.191	16.191	YY	1.100	1.0000
16.192	16.192	YY	1.100	1.0000
16.193	16.193	YY	1.100	1.0000
16.194	16.194	YY	1.100	1.0000
16.195	16.195	YY	1.100	1.0000
16.196	16.196	YY	1.100	1.0000
16.197	16.197	YY	1.100	1.0000
16.198	16.198	YY	1.100	1.0000
16.199	16.199	YY	1.100	1.0000
16.200	16.200	YY	1.100	1.0000

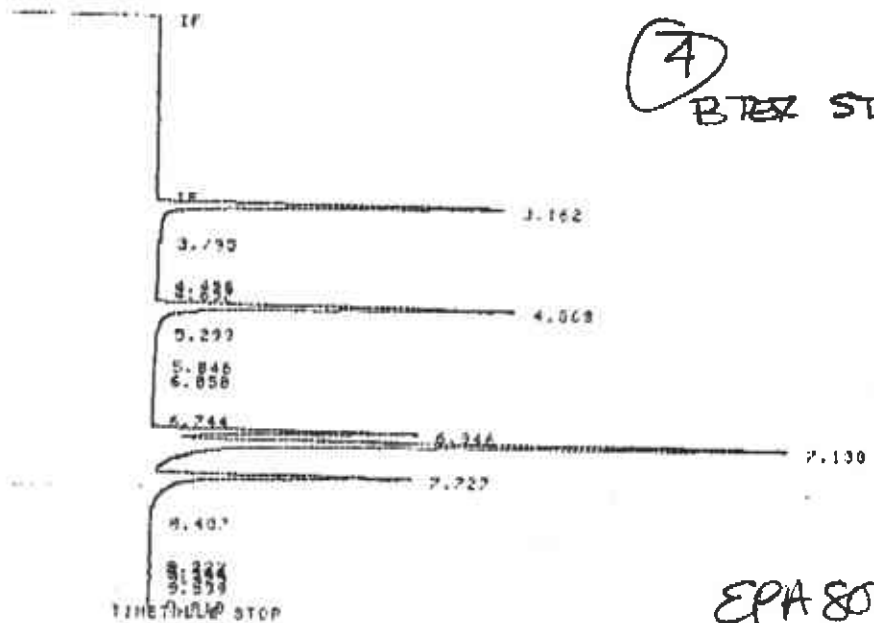
HEWLETT-PACKARD PART NUMBER 5181-1219 PRINT THIS SIDE

FORM 100-1-10000000

HEWLETT-PACKARD

RF of uncalibrated peaks 1.0000E+00
Calibration fit P
Disable post-run RT update .. YES
SAMPLE AMT 1.0000E+00
MUL FACTOR 1.0000E-02

* RUN #13988 OCT 5, 1998 00:57:43
START



④
BTEX STD

EPA 8015/8020
for Low-Med
Boiling Point
Hydrocarbons

DATA SIGNAL FILE: SIGNAL.BNC
OCT 5, 1998 OCT 5, 1998 00:57:43
SIGNAL FILE: SIGNAL.BNC
HPSOILS BTEX PID

RT	TYPE	AREA	WIDTH	HEIGHT	CAL#	IC	NAME
3.162	PB	1812236	.074	487979	1	109.125	BENZENE
4.436	VV	7983	.182	1305		7983.002	
4.637	VP	5173	.065	1334		5172.998	
4.868	PB	1965869	.077	424176	2	181.176	TOLUENE
5.946	VP	6866	.072	1648		6865.997	
6.946	PV	1001512	.071	304160	3	30.628	ETHYL BENZENE
7.138	VB	3594485	.092	728349	4	194.393	P-M-XYLENE
7.727	PB	1434975	.090	299286	5	103.653	O-XYLENE
8.487	BP	4442	.065	1139		4441.997	
9.429	VV	17392	.108	2685		17391.992	
9.589	VV	12751	.119	1787		12750.996	

TOTAL AREA=1.8164E+07
MUL FACTOR=1.0000E-02
SAMPLE AMT=1.0000E+00

CALIBRATION
ESTD
REF X RTM: -0.100 NON-REF Y RTM: -0.100

LEVEL: 1 RECALIBRATIONS: 1

CAL#	RT	LV	AMT	AMT/AREA
1	2.181	1	1.0000E+02	6.0215E-05
2	4.979	1	1.0000E+02	5.1467E-05
3	6.949	1	1.0000E+02	2.3757E-05
4	7.140	1	2.0000E+02	5.4881E-05
5	7.728	1	1.0000E+02	7.2737E-05

CAL#	NAME
1	BENZENE
2	TOLUENE

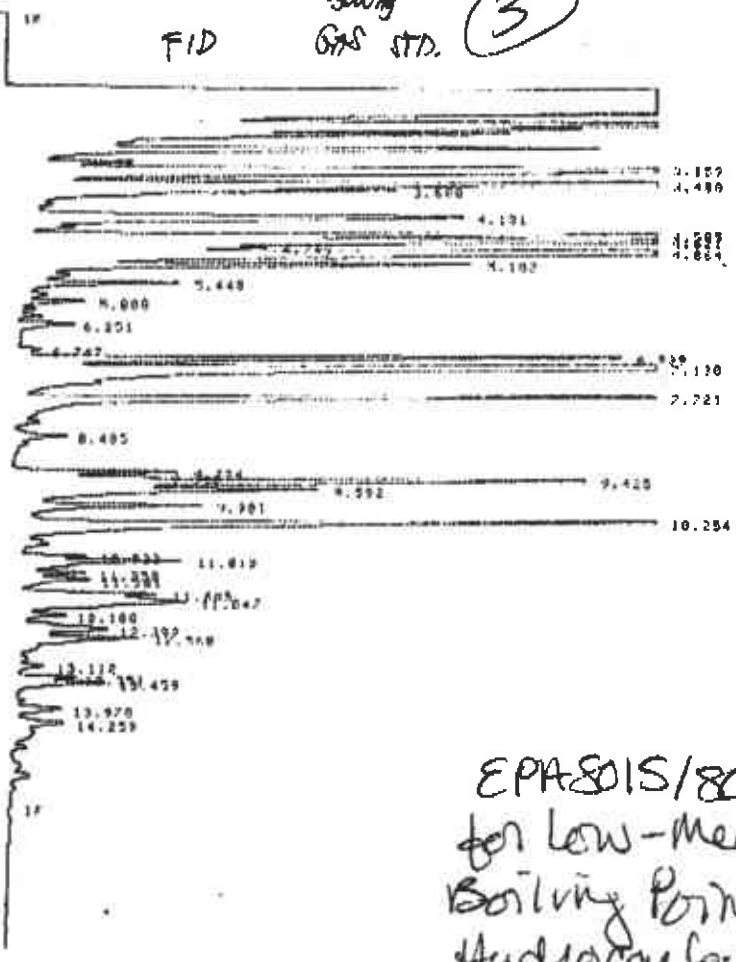
HEWLETT-PACKARD PART NUMBER 5181-1219 PRINT THIS SIDE

HEWLETT-PACKARD PART NUMBER 5181-1219 PRINT THIS SIDE

DATA 014251 OCT 9, 1998 00148120

FID

500mg GAS STD. (3)



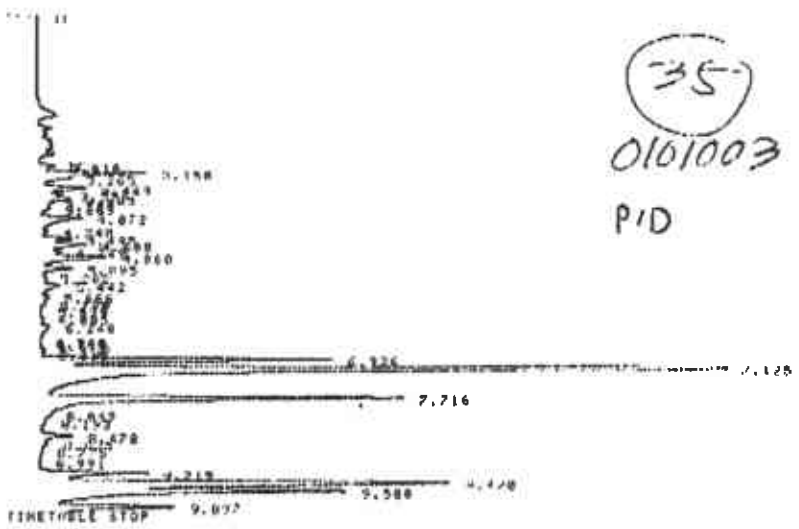
EPA 8015/8020 for low-med. Boiling Point Hydrocarbons

Closing signal file N:SIGNAL .BHC

DATA 14251 OCT 9, 1998 00148120

SIGNAL FILE: N:SIGNAL.BHC
APPEAR:

RT	AREA	TYPE	WIDTH	HEIGHT
2.159	656634	PV	.128	8.60727
3.489	789744	VV	.073	10.95210
3.600	149297	VP	.082	1.94392
4.191	312379	PV	.189	4.09472
4.509	346187	PV	.067	4.54155
4.621	527183	VV	.090	7.04844
4.749	76820	VV	.051	.97640
4.864	1161931	VV	.083	11.71979
5.102	201742	VV	.078	2.40328
5.448	61291	VV	.076	.88341
5.800	21959	VP	.047	.27493
6.251	27843	FB	.091	.36497
6.747	6469	FB	.067	.08488
6.939	214857	BV	.072	2.67938
7.130	826781	VB	.088	10.36341
7.721	324846	FB	.084	4.25014
8.419	27373	PV	.099	.35391
9.224	65710	PV	.075	.86160
9.338	13499	VV	.057	.17741
9.425	320311	VV	.106	4.19869
9.592	187898	VV	.116	2.46221
9.901	182303	VV	.182	1.34168
10.254	410036	VV	.103	5.41415
10.922	26282	VV	.068	.34451
11.815	95279	VV	.107	1.24991
11.859	14141	VV	.079	.19772
11.887	46891	VV	.116	.61446
11.885	56442	VV	.098	.87093
11.847	170597	VV	.109	2.23621
12.100	27474	VV	.101	.31800
12.302	76046	VV	.155	1.00731
12.560	93194	VV	.144	1.27140
13.112	14438	VV	.096	.19450
13.351	23809	VV	.074	.31209
13.459	47488	VP	.100	.62540
13.970	24981	VP	.107	.32740
14.259	21685	FB	.108	.28374



35
 0101003
 PID

Closing signal file M: SIGNAL .BNC
 RUN# 14817 OCT 6, 1990 02:31:24
 SIGNAL FILE: M: SIGNAL.BNC
 MFSOILS BTEX PID

EPA-8015/8026
 for Low-Med
 Boiling Point
 Hydrocarbons

ESTD:-AREA

RT	TYPE	AREA	WIDTH	HEIGHT	CALC	HQ	NAME
3.018	UB	5150	.028	3222		5150.000	
3.158	PV	661839	.077	142959	1	39.803	BENZENE
3.260	VP	130742	.069	37774		130742.000	
3.449	PV	316579	.087	60608		316579.000	
3.598	VV	109010	.059	29372		109009.920	
3.685	VV	207156	.085	46579		207156.000	
3.791	VV	33934	.052	10619		33933.964	
3.869	VP	52022	.073	12022		52022.000	
4.072	PV	374493	.109	36957		176494.300	
4.310	VV	48436	.078	10372		48435.984	
4.495	VV	104391	.069	44689		104390.960	
4.608	VV	372172	.094	65687		372171.840	
4.719	VV	140265	.079	29976		140264.960	
4.800	VV	130413	.100	94392	2	71.414	TOLUENE
5.095	VV	224089	.081	45671		224089.040	
5.292	VV	50135	.104	8868		50135.000	
5.442	VV	227053	.124	29249		227052.800	
5.666	VV	90300	.105	14201		90307.960	
5.799	VV	41436	.074	9309		41435.904	
5.849	VP	13447	.057	4701		13447.000	
6.085	PV	35089	.082	7310		35088.992	
6.240	VP	137007	.152	15079		137006.940	
6.619	VP	4565	.056	2540		4564.990	
6.737	PV	22258	.056	6593		22257.992	
6.716	PV	1792394	.071	377001	3	48.443	ETHYL BENZENE
7.125	VB	7934339	.082	1496435	4	396.647	P-M-XYLENE
7.216	PB	2416579	.081	196351	5	171.056	O-XYLENE
8.193	PP	7900	.017	2631		7907.997	
8.478	PV	241627	.086	16599		241427.840	
8.425	VV	69870	.073	11763		69877.984	
8.778	VV	20700	.116	4125		20700.000	
8.991	VP	1952	.073	1127		1951.997	
9.219	PV	730665	.089	151400		730664.840	
9.440	VV	3634277	.100	872009		3634276.000	
9.588	VV	2504017	.101	424009		2504036.000	
9.832	I VIL	145413	.080	176433		145413.120	

TOTAL AREA=2.3698E+07
 MUL FACTOR=1.0000E+02
 SAMPLE AMT=1.0000E+00

CALIBRATION

EQN
 REF 1 RTN1 = -0.100 NON-REF 2 RTN1 = 0.100

LEVEL 1 REGRESSIONS 1

CALC	PT	LV	AMT	AMT AREA
1	3.181	1	1.0000E+02	6.0319E+05
2	4.072	1	1.0000E+02	5.1467E+05
3	6.449	1	1.0000E+02	2.3757E+05
4	7.140	1	2.0000E+02	5.4001E+05
5	8.425	1	1.0000E+02	6.9877E+04

PRINT THIS SIDE

HEWLETT-PACKARD PART NUMBER 5181-1219

SIDE

HEWLETT-PACKARD

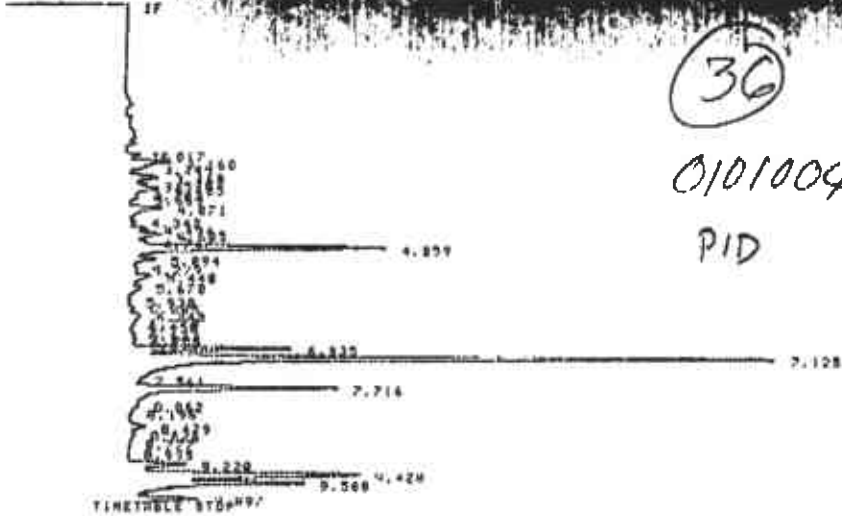
PRINT THIS SIDE

PART NUMBER 5181-1219

HEWLETT-PACKARD

P.15

START



30
0101004
PID

Closing signal via MESSAGE LINE
RUN# 71818 OCT 6, 1978 03105124

SIGNAL FILE: MESSAGE LINE

HP SOILS BTEX PID

EPA 8015/8020
for Low-Med
Boiling Point
Hydrocarbons

RT	AREA	WIDTH	HEIGHT	CONC	NAME		
3.017	08	4980	.032	2691	4977.797		
3.160	BV	272669	.079	57231	16.419		
3.265	VP	93614	.064	24514	93613.994		
3.449	PV	226854	.091	41966	226853.948		
3.598	VV	71276	.059	25607	91296.000		
3.695	VV	220800	.087	42472	220800.000		
3.740	VV	36684	.052	11828	36683.984		
3.849	VP	61814	.074	13303	61814.000		
4.071	PV	294804	.101	47759	294203.810		
4.342	VV	47389	.079	7393	47389.992		
4.494	VV	119655	.079	28115	119655.000		
4.605	VV	205841	.110	47687	205840.960		
4.747	VV	189497	.068	24397	189497.000		
4.859	VV	190528	.087	366970	2	38.066	TOLUENE
5.094	VV	220970	.111	38903	220970.000		
5.279	VV	81710	.107	12289	84707.704		
5.140	VV	203914	.142	33242	203913.920		
5.670	VV	153632	.142	18745	153631.920		
5.950	VP	14336	.052	4553	14336.000		
6.085	PV	44445	.087	8925	44445.000		
6.245	VV	120197	.119	16725	120196.920		
6.370	VV	29769	.063	7646	29769.000		
6.489	VP	16750	.062	1517	16750.000		
6.629	PV	18688	.064	1839	18687.932		
6.735	VV	21878	.054	6691	21869.992		
6.935	PV	917490	.071	216001	0	21.797	ETHYL BENZENE
7.125	VP	438093	.088	886115	4	231.471	ETHYLBENZ
7.561	VP	5459	.047	1496	5459.002		
7.716	PB	1133899	.084	285278	5	104.178	HEXANE
8.062	VP	15541	.060	4299	15541.000		
8.479	PV	149949	.117	25723	149949.348		
8.626	VV	64585	.093	11522	64585.000		
8.777	VP	24196	.105	3952	24196.000		
8.995	VP	4712	.078	1458	4712.000		
9.220	PV	384859	.079	81571	384859.040		
9.420	VV	2877488	.107	175863	2877488.00		
9.568	VV	1506223	.103	245083	1506222.40		
9.897	VP	428333	.078	91029	428332.960		

INSTR APPROX: 1.000000E-02
MUL FACTOR: 1.000000E-02
SAMPLE AREA: 1.000000E+00

CALIBRATION

EQTD
REF % RTW: -0.100 HIGH-REF % RTW: -0.100

LEVEL: 1 RECALIBRATION: 1

ID-418 384 B233

10-11-90 05:48 SEC01A ANALYTIC

PART NUMBER 5181-1219

HEWLETT-PACKARD

PRINT THIS SIDE

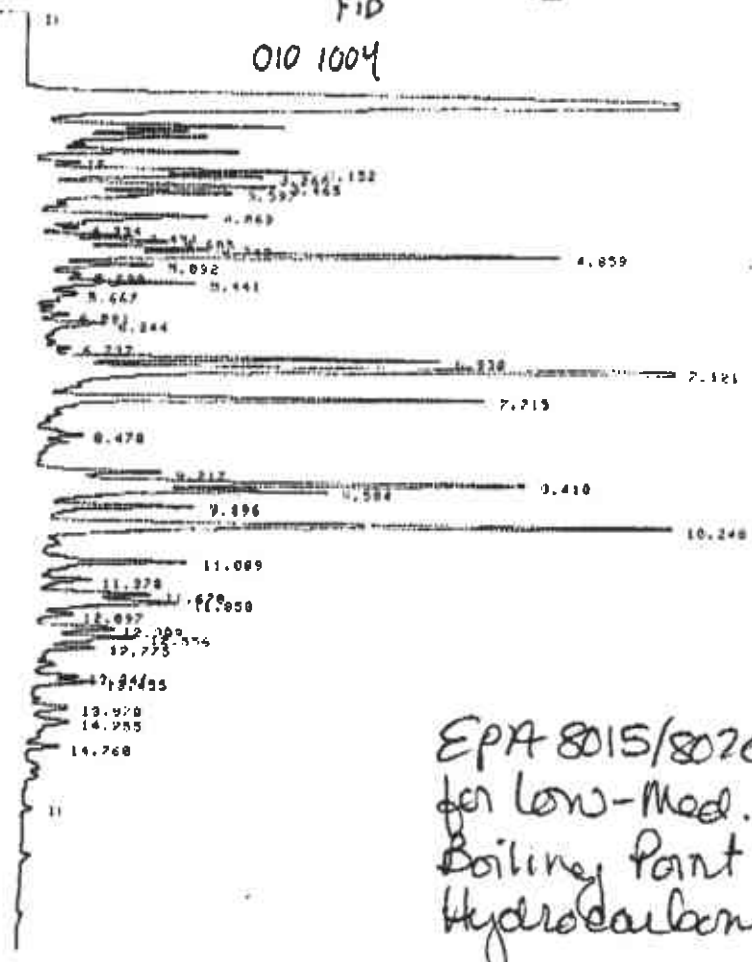
PART NUMBER 5181-1219

HEWLETT-PACKARD

PUN 814204 OCT 6, 1990 02127106

(36)

FID
010 1004



EPA 8015/8070
for Low-Med.
Boiling Point
Hydrocarbons

STOP

Closing signal file MSIGNAL .BNC

PUN 814204 OCT 6, 1990 02127106

SIGNAL FILE: MSIGNAL.BNC
AREA:

RT	AREA	TYPE	WIDTH	AREA%
3.152	109109	PV	.080	2.95555
3.266	79842	VV	.071	2.18480
3.466	114950	VV	.096	3.14700
3.597	62571	VV	.064	1.71220
4.869	98817	PV	.119	2.78395
4.934	14509	VV	.073	.39782
4.491	37962	VV	.068	.98197
4.495	67397	VV	.100	1.84216
4.748	65287	VV	.075	1.78796
4.859	287624	VV	.109	7.76114
5.072	49267	VV	.083	1.34874
5.290	27217	VV	.108	.74750
5.141	75281	VV	.097	2.05780
5.667	21663	VV	.110	.57879
6.091	18119	PV	.069	.48511
6.244	39191	VP	.120	1.07242
6.737	4758	PP	.054	.12828
6.978	148198	PV	.071	3.83620
7.121	201127	VB	.091	5.41833
7.715	216731	FB	.072	5.76645
8.478	27479	PV	.114	.75741
9.217	34612	RV	.084	.94944
9.418	297353	VV	.112	7.91782
9.584	174996	VV	.114	4.77730
9.896	62974	VV	.099	1.72850
10.248	398219	VV	.106	10.67797
11.089	183906	VV	.124	5.02961
11.378	30979	VV	.109	.82844
11.678	39219	VV	.096	1.06847
11.858	110576	VV	.106	2.94333
12.097	21167	VV	.101	.57923
12.309	55199	VV	.120	1.51594
12.584	68192	VV	.127	1.84481
12.775	30550	VV	.072	.82619
13.316	14771	VV	.075	.40228
13.455	32557	VB	.095	.88884
13.978	24141	VV	.120	.64660
14.255	47599	VP	.225	1.28250
14.768	14821	QB	.080	.40880

LEVEL 1 RECALIBRATION# 1

CALD	RT	LV	HMT	SMI AREA
1	3.181	1	1.0000E+02	8.4515E-05
2	4.079	1	1.0000E+02	5.1467E-05
3	6.749	1	1.0000E+02	7.7757E-05
4	7.149	1	2.0000E+02	5.1091E-05
5	7.778	1	1.0000E+02	7.7757E-05

- CALD NAME
- 1 BENZENE
 - 2 TOLUENE
 - 3 ETHYL BENZENE
 - 4 P,M-XYLENE
 - 5 O,XYLENE

CALIBRATION OPTIONS
 RT of uncalibrated peaks 1.0000E+00
 Calibration fit P
 Disable post-run RT update .. YES
 SAMPLE HMT 1.0000E+00
 MUL FACTOR 1.0000E+02

* RUN 814028 OCT 6, 1998 04112141
 11495



(38)

0101006
 PID

EPA 8015/8020
 for low-med.
 Boiling Point
 Hydrocarbons

Closing signal file REGIONAL .BNC
 RUNS 11829 OCT 6, 1998 04112141
 SIGNAL FILE REGIONAL.BNC
 HUGOILS BTEX PID

ESTD3-AREA	RT	TYPE	AREA	WIDTH	HEIGHT	CALD	HS	NAME
	3.185	PV	41493	.096	32279	1	2.020	BENZENE
	3.268	VV	25952	.142	3993		26251.984	
	3.457	VV	79287	.118	13912		73088.960	
	3.592	VV	17193	.062	4613		17102.978	
	3.676	VV	30284	.093	6862		30783.984	
	2.701	VV	16394	.074	3678		16384.988	
	3.871	VV	21078	.100	2205		21077.992	
	4.065	VV	180427	.132	12724		180427.000	
	4.330	VV	21599	.103	3480		21599.998	
	4.404	VV	40424	.077	10475		40424.000	
	4.598	VV	67863	.095	12014		67863.998	
	4.715	VV	16981	.073	4702		16981.998	
	4.855	VV	162578	.097	28837	2	6.267	TOLUENE
	5.089	VV	43572	.093	8762		44572.000	
	5.271	VV	12618	.131	1579		12689.996	
	5.437	VV	14963	.071	3349		14765.000	
	5.497	VV	11132	.078	2643		11131.996	
	5.660	VV	15000	.102	3538		15910.994	
	5.797	VV	7136	.077	1543		7136.000	
	6.134	PV	9443	.110	1454		9443.000	
	6.210	VV	26813	.106	2244		26814.994	
	6.243	PV	4129	.088	1142		4129.998	
	6.284	PV	18184	.071	4794	3	7.412	ETHYL BENZENE
	7.119	VV	407036	.084	90491	4	21.609	P,M-XYLENE
	7.711	PV	156960	.096	30538	5	11.332	O,XYLENE
	8.475	VV	21571	.087	4104		21767.994	
	8.624	VV	7764	.101	1029		8074.998	
	8.762	VV	6649	.142	817		6649.002	
	9.215	PV	58840	.073	10727		58840.000	
	9.413	VV	24977	.110	3716		24977.004	
	9.505	VV	37004	.106	31284		37004.994	
	9.689	VV	70035	.082	14287		70035.000	

HEWLETT-PACKARD PART NUMBER 5181-1219 PRINT THIS SIDE

HEWLETT-P.

Closing signal file M SIGNAL .BNC

RUN 14285 OCT 6, 1990 04:01:13

SIGNAL FILE: M SIGNAL .BNC
NO RUN PEAKS STORED

* RUN 014286 OCT 6, 1990 04:35:13
START

FID
010 1006

38



EPA 8015/8020
for Low-Med
Boiling Point
Hydrocarbons

STOP

Closing signal file M SIGNAL .BNC

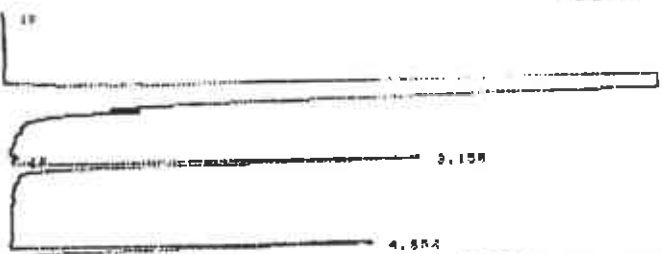
RUN 14286 OCT 6, 1990 04:35:13

SIGNAL FILE: M SIGNAL .BNC
AREAS

RT	AREA	TYPE	WIDTH	ORIG
3.128	21168	UV	.069	7.50018
3.458	29179	VV	.097	10.25446
4.065	27027	VV	.134	9.50019
4.496	10242	UV	.066	3.60011
4.498	17823	VV	.092	5.70018
4.994	27000	VV	.122	9.49340
5.087	8912	VM	.065	3.13261
6.925	15227	PV	.072	5.10236
7.116	52333	VB	.084	18.39531
7.211	22432	BB	.094	7.88496
9.413	22119	UV	.092	7.77353
10.245	32025	PB	.094	11.00956

TOTAL AREA= 284491
CAL FACTOR=1.0000E+00

* RUN 014287 OCT 6, 1990 05:09:13
START



39

HEWLETT-PACKARD PART NUMBER 5181-1219 PRINT THIS SIDE

ID=415 384 9233

10-11-90 05:50 SEQUOIA ANALYTIC

CHROME BLAME TECH

010 1005

10-8-90

CALIBRATION OPTIONS
RT of uncalibrated peaks 1.0000E+00
Calibration fit P
Disable post-run RT update .. YLS
SAMPLE AMT 1.0000E+00
MUL FACTOR 1.0000E+00

* RUN 81-1026 OCT 9, 1990 00140147
START

IF

3.184
3.443
3.694
4.188
4.385
4.980
5.479
5.879
6.435
6.706
6.988
7.738

8.528
9.100
9.240
9.300
9.350
9.400
9.450
9.500
9.550
9.600
9.650
9.700
9.750

TIME TABLE STOP

4

BLK. 10890

EPA 8015/8020
for low-Med.
Boiling Point
Hydrocarbons

Closing signal file MRSIGNAL .BNC

RUNS 14826 OCT 9, 1990 00140147

SIGNAL FILE: MRSIGNAL.BNC

MFSOILS BTEX PID

ESTD AREA	RT	TYPE	AREA	WIDTH	HEIGHT	CALC	INJ	NAME
3.184	0V		21807	.079	4433	1	1.278	BENZENE
3.443	VV		31344	.136	2048		31344.000	
3.694	VV		18521	.142	2181		18521.000	
3.821	VV		52275	.167	5206		52275.000	
4.188	VV		24124	.249	1613		24124.000	
4.385	VV		18625	.121	1464		18625.000	
4.522	VP		18316	.183	1667		18316.042	
4.980	PV		20460	.007	3939	2	1.050	TOLUENE
6.435	FR		6810	.993	1244		6809.997	
6.980	PV		12542	.084	2676	3	.072	ETHYL BENZENE
7.168	VB		38739	.084	7654	4	2.094	P.M-XYLENE
7.738	0V		25873	.143	2023	1	1.869	O-XYLENE
9.380	VV		4655	.069	1120		4654.978	
9.487	VV		18269	.138	1571		18269.000	
9.604	VV		11163	.143	1279		11163.000	

TOTAL AREA= 387926
MUL FACTOR=1.0000E+02
SAMPLE AMT=1.0000E+00

CALIBRATION

ESTD
REF % RTM1 =0.100 NON REF % RTM1 =0.100

LEVEL: 1 RECALIBRATION(S): 1

CALC	RT	LV	AMT	AMT/AREA
1	2.181	1	1.0000E+02	6.0215E-05
2	4.879	1	1.0000E+02	5.1467E-05
3	6.749	1	1.0000E+02	2.3757E-05
4	7.140	1	2.0000E+02	1.4441E-05
5	7.738	1	1.0000E+02	7.2233E-05

CALC	NAME
1	BENZENE
2	TOLUENE
3	ETHYL BENZENE
4	P.M-XYLENE
5	O-XYLENE

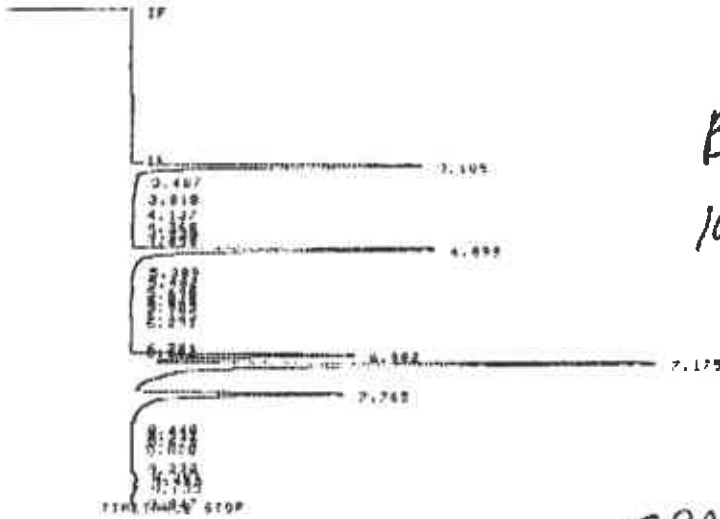
CALIBRATION OPTIONS
RT of uncalibrated peaks 1.0000E+00
Calibration fit P
Disable post-run RT update .. YES
SAMPLE AMT 1.0000E+00
MUL FACTOR 1.0000E+02

HEWLETT-PACKARD PART NUMBER 5181-1219 PRINT THIS SIDE

THIS SIDE

CALIBRATION OPTIONS
 RF of uncalibrated peaks 1.0000E+00
 Calibration fit P
 Disable post-run RI update ... YLS
 SAMPLE AMT 1.0000E+00
 MUL FACTOR 1.0000E+02

* RUN 814024 OCT 8, 1990 07:20:26
 START



②
 BTEX STD
 10X OF 10PPM

C:\DATA\Signal File\M SIGNAL .BNC
 RUN# 814024 OCT 8, 1990 07:20:26
 SIGNAL FILE M SIGNAL.BNC
 MURKELS BTEX PID

EPA 8015/8020
 for Low-Med.
 Boiling Point
 Hydrocarbons

ESTD:-AREA

RT TYPE	AREA	WIDTH	HEIGHT	CH	NO	NAME
3.105 FB	184013	.073	444262	3	130.073	BENZENE
4.899 VP	4714	.100	473		4794.000	
4.936 VV	10351	.073	2234		10350.396	
4.959 VP	9142	.103	1485		9147.003	
4.994 FB	1957128	.073	492303	2	1957128	TOLUENE
5.203 BP	4470	.062	1211		4470.000	
6.291 PV	11302	.030	2947		11300.070	
6.902 PV	1393707	.073	305551	3	31.686	ETHYL BENZENE
7.175 VB	3525301	.067	712947	4	130.671	METHYLENE
7.745 VB	1277824	.080	208103	5	99.532	OXYLENE
8.440 BV	5449	.066	1390		5444.270	
8.531 VV	6079	.080	1709		6070.995	
8.675 VV	10045	.080	2907		10044.276	
8.620 VV	5747	.131	732		5747.000	
9.006 PV	14794	.112	2203		14793.992	
9.301 VV	29170	.072	6761		29177.984	
9.460 VV	26436	.100	8737		26436.000	
9.641 VV	51260	.117	7112		51260.000	

TOTAL AREA=1.0237E+07
 MUL FACTOR=1.0000E+02
 SAMPLE AMT=1.0000E+00

CALIBRATION

ESTD
 REF % RTM: -0.100 NON-REF % RTM: -0.100
 LEVEL: 1 RECALIBRATION: 1

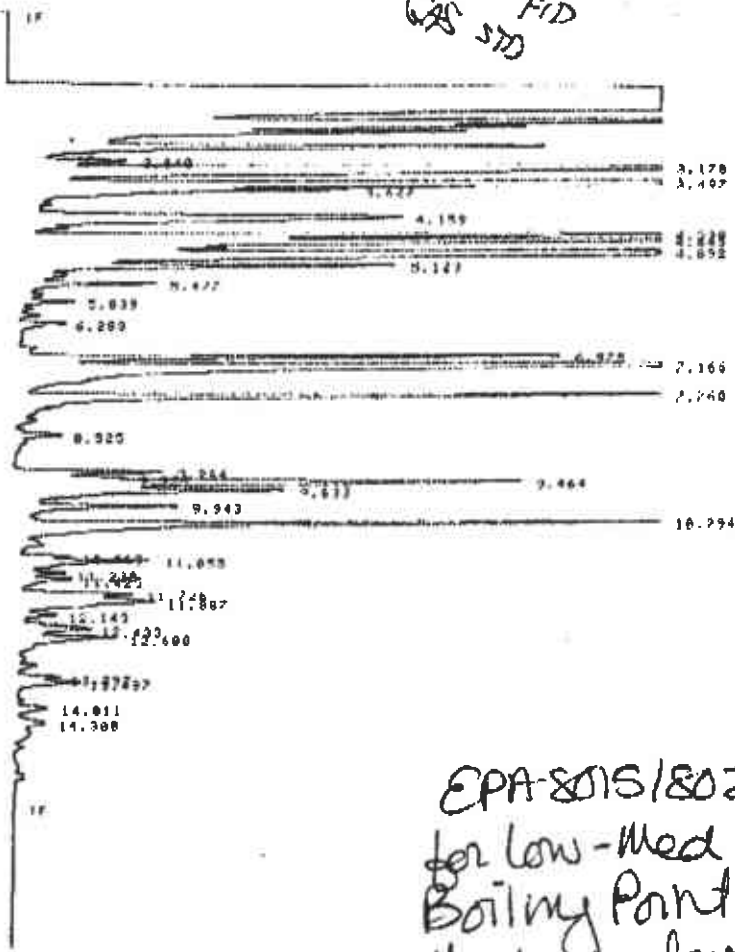
HEWLETT-PACKARD PAKT NUMBER 5181-1219 PRINT THIS SIDE

3

* RUN 014291 OCT 8. 1978 08120138
START

CAS STD FID

HEWLETT-PACKARD PART NUMBER 5181-1219 PRINT THIS SIDE



STOP

EPA-8015/8020
for low-med
Boiling Point
Hydrocarbons

Closing signal from MINISIGNAL .BNC

ADUE 14291 OCT 8. 1978 08120138

SIGNAL FILE: M=SIGNAL.BNC

AREA#

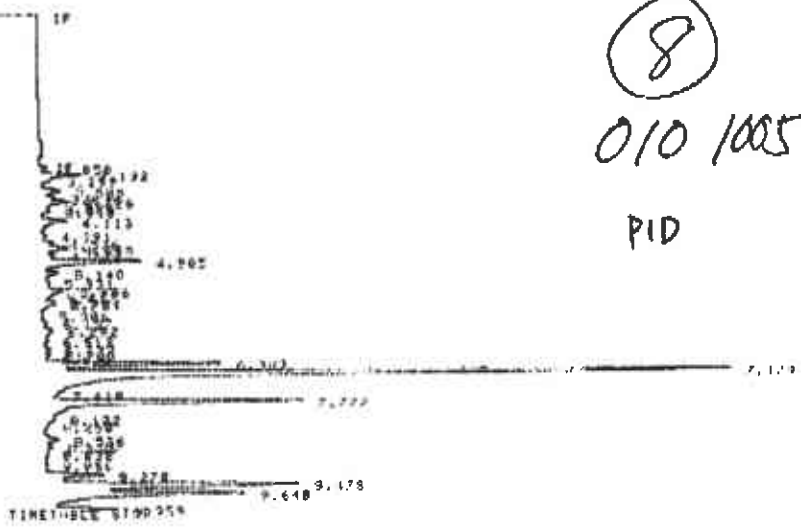
W)	AREA	TYPE	WIDTH	AREA:
3.040	12088	BT	.049	.10381
3.178	999943	PV	.121	3.85378
3.497	695862	VV	.074	18.58113
3.622	129841	VF	.083	1.97493
4.159	270135	PV	.148	4.10762
4.530	297891	PV	.067	4.52967
4.649	465929	VV	.098	7.88462
4.892	1257193	VV	.084	16.07546
5.129	153869	VV	.088	2.03970
5.477	51203	VV	.076	.77858
5.839	18840	VF	.070	.27431
6.283	22692	VB	.091	.34585
6.760	196988	PV	.072	7.79478
7.166	746126	VB	.084	11.34544
7.760	292798	PH	.083	4.38817
8.920	22987	PV	.091	.33463
9.204	98329	BV	.074	.88694
9.374	33538	VV	.057	.50991
9.464	281543	VV	.166	4.21149
9.613	163394	VV	.115	2.48758
9.943	87131	VV	.181	1.32438
10.294	142524	VV	.102	2.38841
10.963	19993	VV	.069	.38481
11.855	76734	VV	.188	1.16808
11.298	22882	VV	.081	.32577
11.425	34836	VV	.115	.52971
11.726	99400	VV	.089	.84856
11.807	133819	VV	.188	2.89482
12.143	21844	VV	.108	.39216
12.433	60538	VV	.151	.97893
12.608	72956	VV	.138	1.18823
13.392	17538	VV	.075	.26648
13.497	31887	VB	.100	.51528
14.011	17888	VP	.187	.25971
14.308	13385	VB	.112	.28821

TOTAL AREA=276642

- NAME
- 1 BENZENE
 - 2 TOLUENE
 - 3 ETHYL BENZENE
 - 4 P.M-XYLENE
 - 5 O-XYLENE

CALIBRATION OPTIONS
 FF OF uncalibrated peaks 1.0000E+00
 Calibration file 0
 Detectable post-run RT message ... YES
 SAMPLE NAME 1.0000E+00
 MUL FACTOR 1.0000E+02

* RUN 14030 OCT 8, 1990 11:00:56
 START



Closing signal file MESSAGES.BMC
 RUN 14030 OCT 8, 1990 11:00:56

SIGNAL FILE: MESSAGES.BMC
 MESSAGES BY: PID

*EPA 8013/8020
 for Low-Med
 Boiling Point
 Hydrocarbons*

RT	TYPE	AREA	WIDTH	HEIGHT	CALC NO	NAME
3.050	BV	32629	.064	8056	1	BENZENE
3.132	VV	274944	.079	58748	1	BENZENE
3.239	VV	54210	.062	14449		
3.545	VV	157466	.097	27173		
3.636	VV	72182	.059	20228		
3.726	VV	214146	.088	40659		
3.824	VV	38352	.054	12127		
3.916	VV	66540	.078	14200		
4.113	VV	217034	.096	37735		
4.291	VV	42309	.061	6700		
4.536	VV	40507	.071	17000		
4.645	VV	248852	.102	39182		
4.790	VV	82493	.072	20371		
4.905	VV	808907	.094	141074	2	TOLUENE
5.140	VV	176536	.102	25673		
5.331	VV	76931	.107	12343		
5.486	VV	262400	.130	38520		
5.617	VV	58527	.057	14775		
5.724	VV	69240	.053	21030		
5.731	VV	119013	.068	25722		
5.986	VP	13826	.055	4179		
6.137	PV	46010	.040	8072		
6.292	VV	127167	.147	14453		
6.410	VP	23824	.070	5495		
6.677	PV	16442	.076	7440		
6.704	VP	22004	.057	4633		
6.703	PV	90303	.070	23467	3	ETHYL BENZENE
7.179	VB	494134	.060	104427	4	P.M-XYLENE
7.619	BP	3607	.043	7405		
7.777	PM	1768693	.084	350910	5	O-XYLENE
8.122	BP	24870	.073	5615		
8.226	PV	102005	.103	21486		
8.486	VV	66276	.092	12042		
8.838	VP	27770	.099	4704		
9.036	PP	14448	.074	3134		
9.270	PV	371374	.077	80101		
9.478	VV	2210805	.105	352897		
9.640	VV	1624004	.099	271470		
9.659	VP	50030	.065	21629		

HEWLETT-PACKARD PART NUMBER 5181-1219 PRINT THIS SIDE

PART NUMBER 5181-1219 PRINT THIS SIDE

1005
 EPA FID

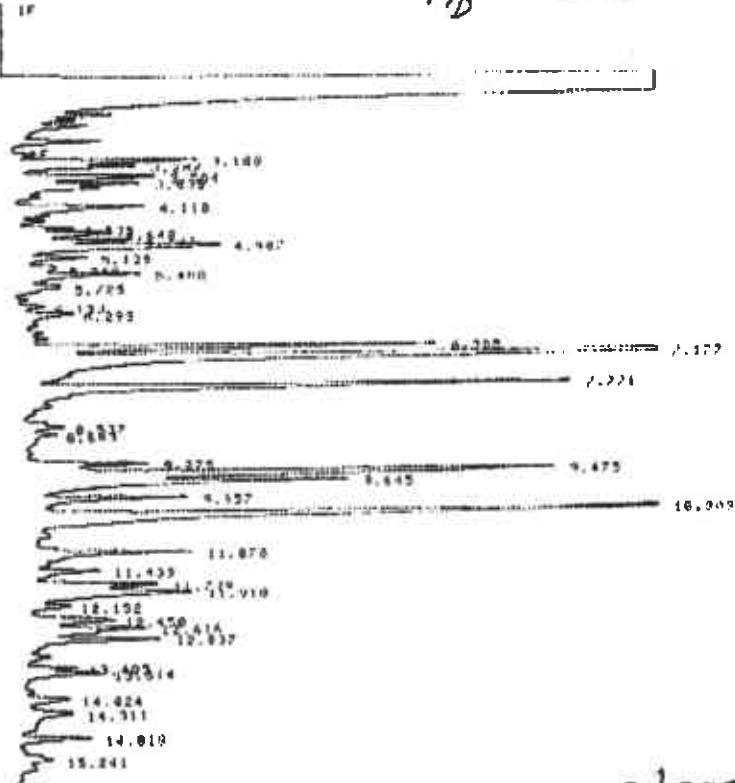
8

HEWLETT-PACKARD

PRINT THIS SIDE

PART NUMBER 5181-1219

HEWLETT-PACKARD



STOP

CLOSING signal file RESIDUAL .DNC

RUN 14296 OCT 0. 1990 11:22:40

SIGNAL FILE: MSIGNAL.DNC
 AREA:

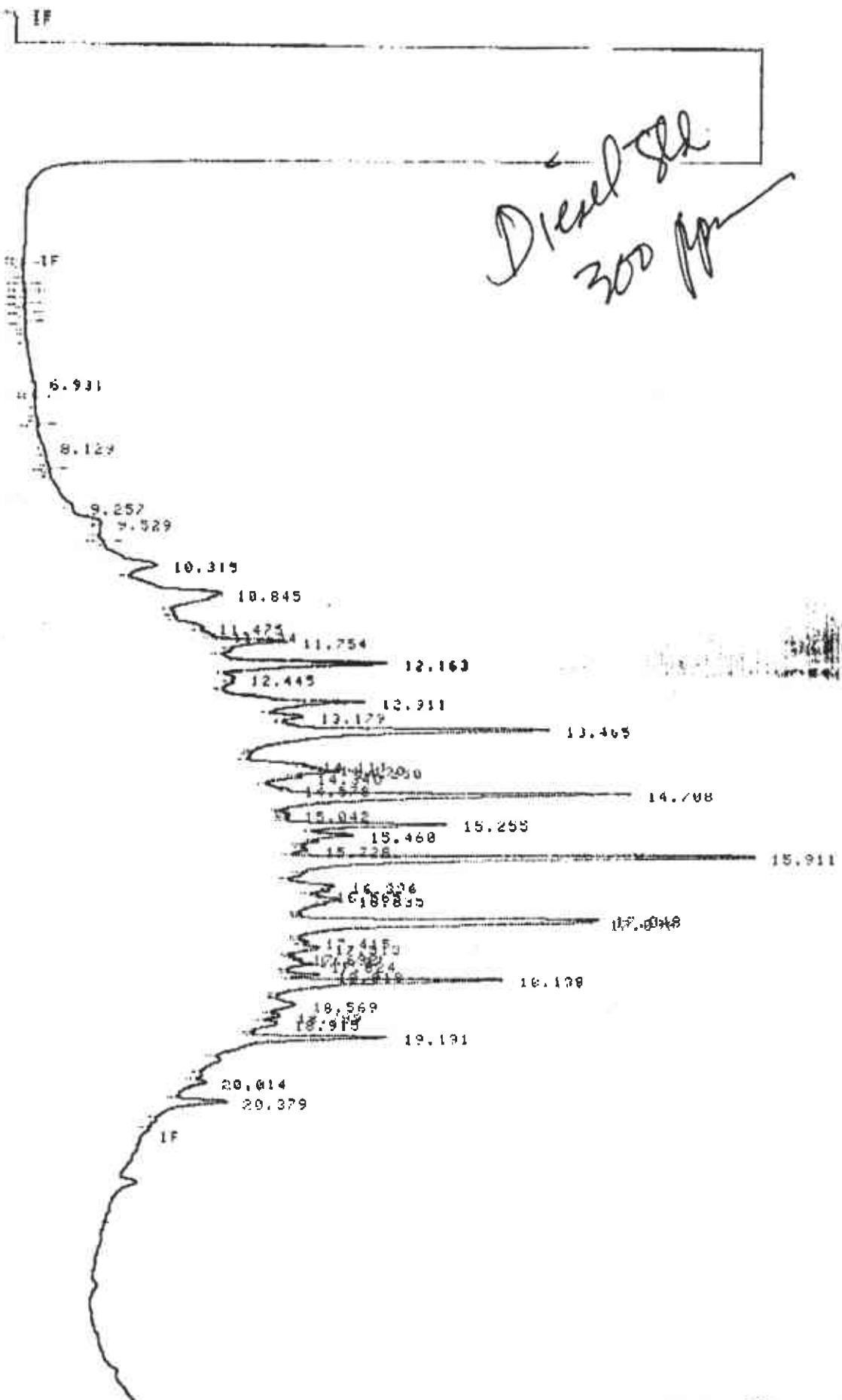
RT	AREA	TYPE	WIDTH	RELAX
3.180	78127	VV	.001	2.13428
3.302	45879	VV	.074	1.26378
3.504	73365	VV	.181	2.85476
3.695	41895	VV	.063	1.15289
4.118	70470	PV	.103	1.97583
4.308	22464	VV	.071	.82777
4.444	52193	VV	.109	1.40284
4.792	47404	VV	.078	1.33120
4.907	132310	VV	.129	3.78727
5.139	34676	VV	.090	.97218
5.348	29629	VV	.175	.83064
5.488	71918	VV	.108	2.01597
5.725	32671	VF	.146	1.00002
6.130	18644	VV	.079	.74840
6.293	28997	VV	.109	.81292
6.985	146408	PV	.972	4.10590
7.177	571971	VB	.479	14.94502
7.771	249928	BB	.300	7.08657
8.537	26397	PV	.125	.74893
8.693	22945	VF	.133	.64926
9.275	53254	PV	.093	1.49324
9.475	380089	VV	.111	8.65493
9.545	184104	VV	.110	5.16296
9.957	77349	VV	.093	2.16845
10.109	441276	VV	.193	12.37140
11.070	92090	PV	.112	2.60269
11.439	34090	VV	.077	.95593
11.739	68210	VV	.094	1.74484
11.910	130510	VV	.153	3.44245
12.182	19773	VP	.095	.55193
12.470	53849	PV	.122	1.49330
12.616	74345	VV	.176	2.08424
12.837	93488	VB	.092	1.41705
13.409	19499	PV	.072	.84814
13.514	16495	VB	.094	1.02315
14.024	29830	VV	.139	.81487
14.311	58089	VF	.216	1.62814
14.810	26307	PB	.072	.71251
15.241	22210	BY	.135	.62545

EPA 8015/8020
 for low-Med
 Boiling Point
 Hydrocarbons

EPA 8015 modified for High Boiling Point Hydrocarbons

Waiting for System Readiness
RUN # 9301 OCT 5, 1990 13:26:55
START

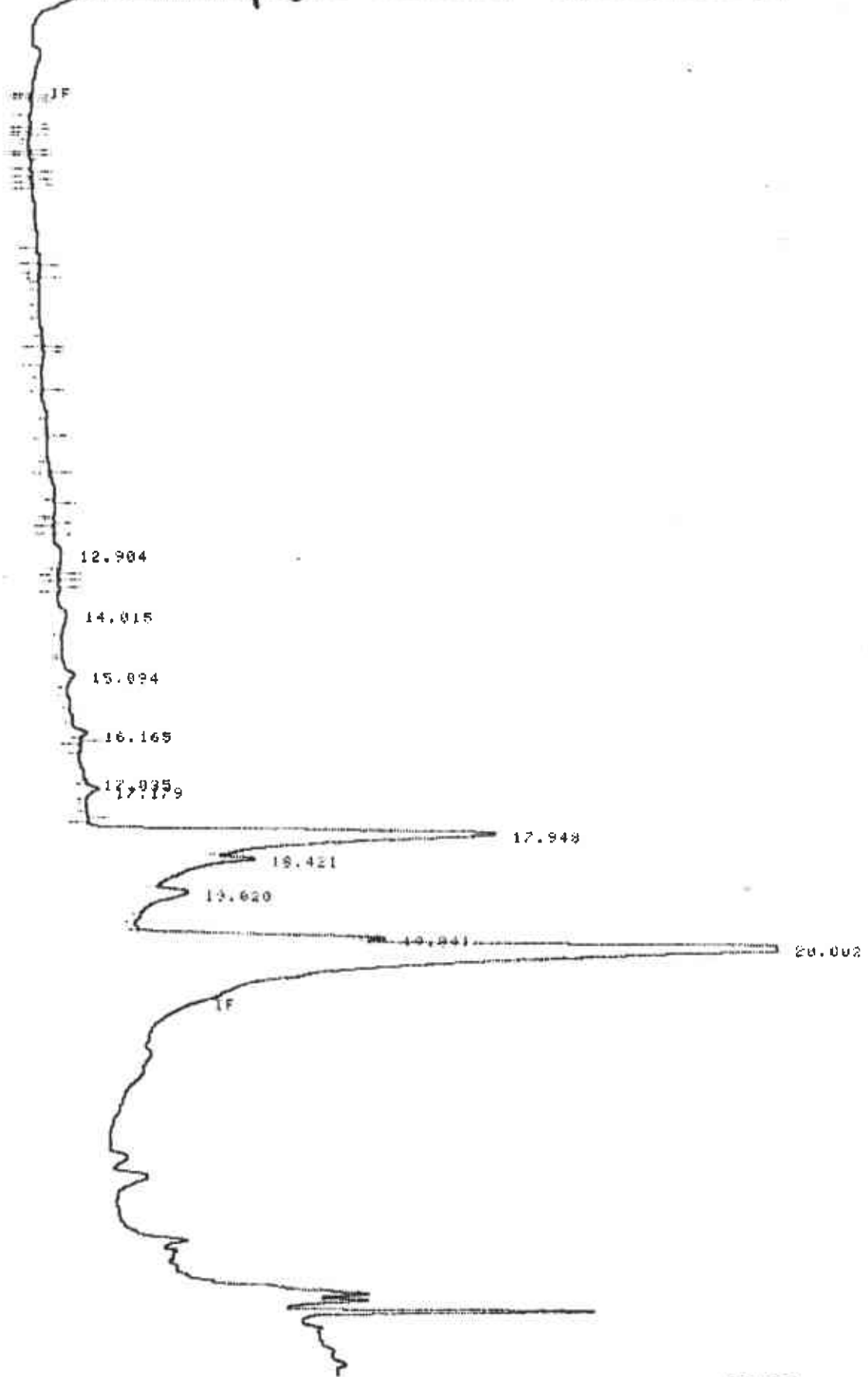
(1)



Blain 0100282

(B)

MW 10/5 20:10



HEWL

RUN # 9814

OCT 5, 1988

EPA 8015 modified for High Boiling Point Hydrocarbons

14

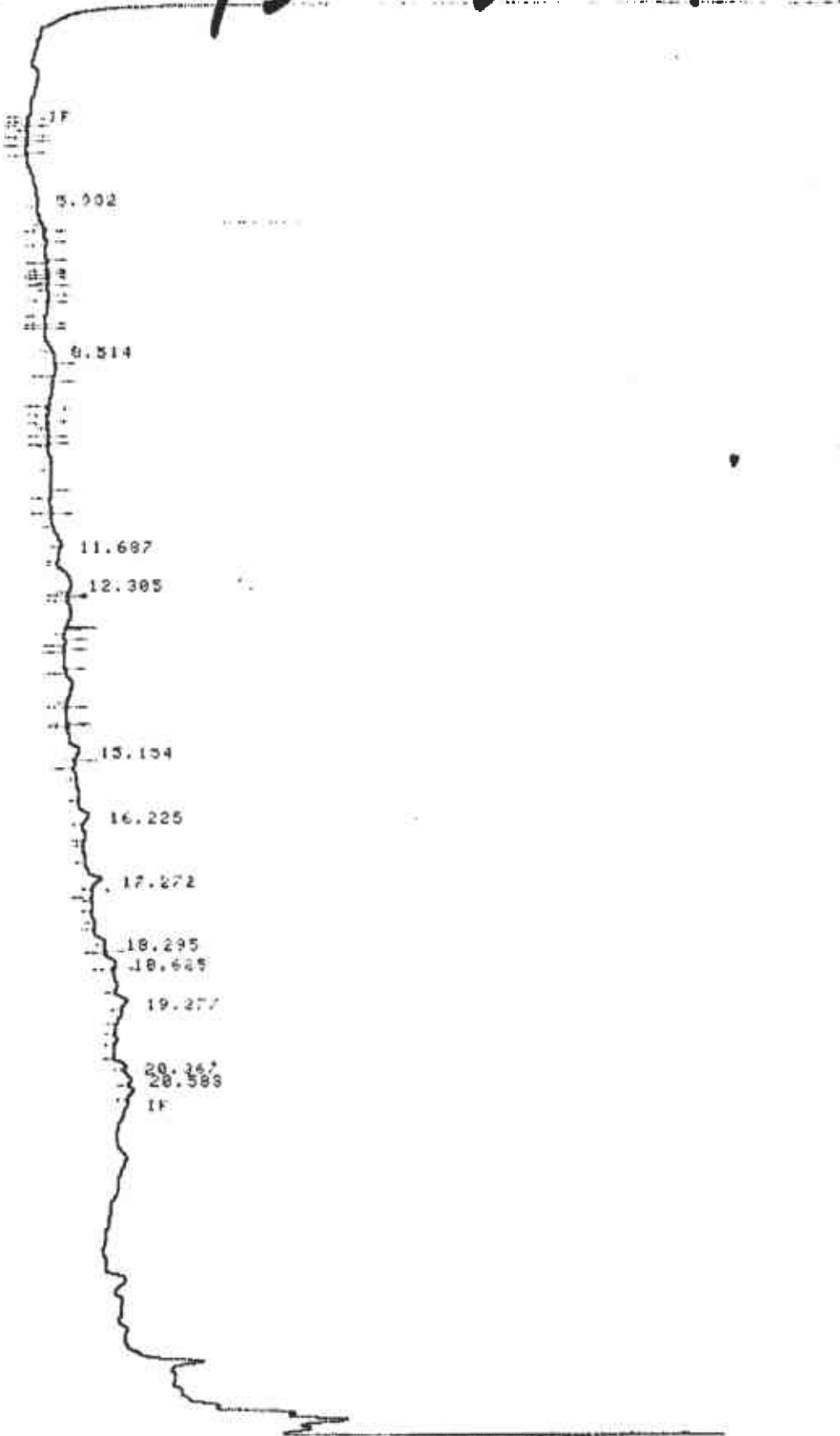
IF

Blair 0100283

MN

19/5

20:1.0

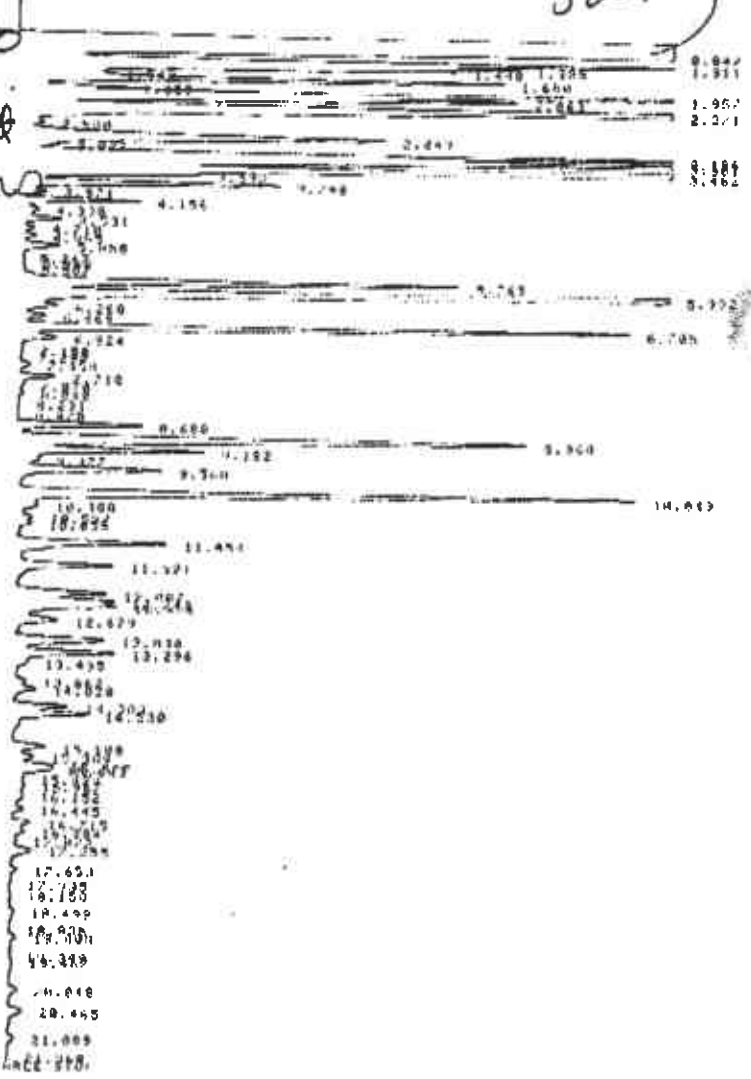


PRINT THIS SIDE

PART NUMBER 5181-1219

EWLETT-PACKARD

EPA 8015/8020
 for Low - Med.
 Boiling Point
 Hydrocarbons



RUN 8 161 JAN 8 1981 23105137

AREA

RT	AREA	TIME	WIDTH	AREA
0.42	157270120	SMH	0.00	24.14166
1.311	20009200	SMH	0.04	3.08402
1.385	7507603	SMH	0.05	1.14114
1.448	14245521	CHH	0.09	1.57597
1.449	95109	TBB	0.03	0.00552
1.600	15755704	SMH	0.02	2.52208
1.858	472108	TBR	0.03	0.07218
1.757	21010749	SMH	0.02	3.57405
2.065	14081120	SMH	0.03	2.16143
2.271	50046176	SMH	0.17	4.11175
2.510	239714	TBF	0.01	0.02005
2.840	15739016	TFV	0.11	2.41470
2.922	145524	TFM	0.05	0.05511
2.156	15351000	SMH	0.02	3.06112
3.101	25931320	SMH	0.03	3.98134
2.462	51713344	SMH	0.10	4.44011
3.573	559407	TBB	0.02	0.02004
3.738	4440301	TBB	0.02	0.02006
3.971	350502	TBB	0.04	0.05511
4.157	45020112	TBB	0.02	0.02006
4.238	34104	VAD	0.01	0.02006
4.771	1019760	VAD	0.04	0.05511
4.710	250234	VAD	0.02	0.02006
4.965	100700	VAD	0.02	0.02006
5.050	1002601	VAD	0.01	0.02006
5.207	11326	TFV	0.02	0.02006
5.399				