



JUL 13 2001

3164 Gold Camp Drive
Suite 200
Rancho Cordova, CA 95670-6021
U.S.A.
916/638-2085
FAX: 916/638-8385

July 11, 2001

Ms. Eva Chu
Alameda County Health Care Services
Department of Environmental Health
1131 Harbor Bay Parkway, Suite 250
Alameda, California 94502-6577

Subject: Letter Workplan for Interim Corrective Action at Former Chevron Service Station #9-1153, 3126 Fernside Boulevard, Alameda, California.

Ms. Chu,

Enclosed please find Figures 1 and 2, which were inadvertently left off of the above workplan distributed on June 25, 2001.

If you have any questions regarding this workplan please feel free to contact me at 916) 536-2612.

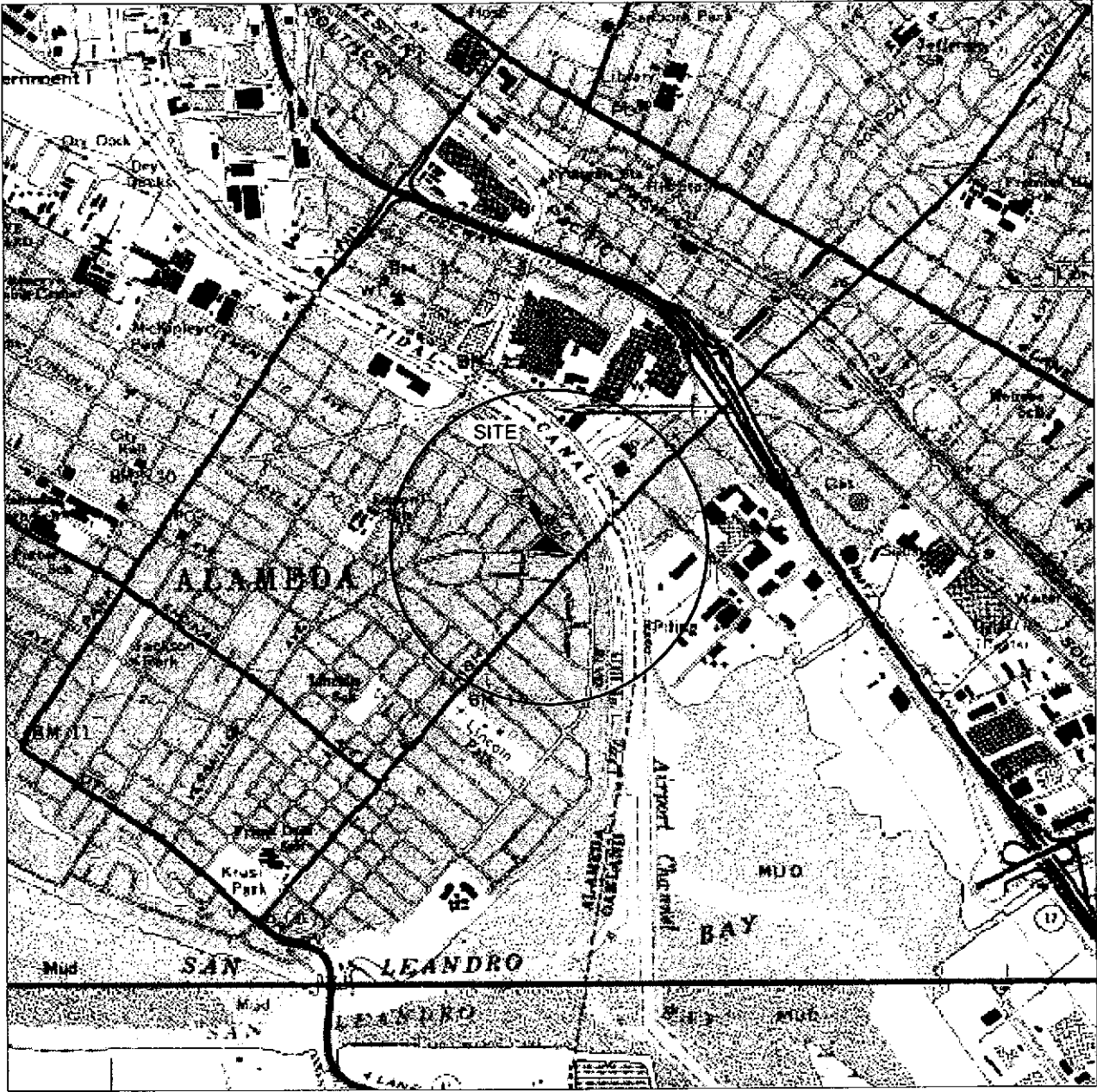
Sincerely
Delta Environmental Consultants, Inc.

A handwritten signature in black ink, appearing to read "T. A. Del Frate", written over a horizontal line.

Todd A. Del Frate
Project Manager

Enclosures: Figure 1: Vicinity Map
Figure 2: Site Plan

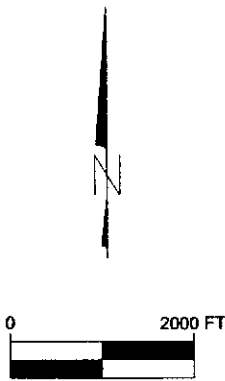
Cc: Mr. Tom Bauhs, Chevron Products Company
Mr. and Mrs. Thompson, 3135 Gibbons Boulevard, Alameda, California



GENERAL NOTES:
 BASE MAP FROM U.S.G.S.
 OAKLAND EAST, CA.
 7.5 MINUTE TOPOGRAPHIC
 PHOTOREVISED 1980



QUADRANGLE LOCATION



SCALE 1:24,000

FIGURE 1
 SITE LOCATION MAP
 CHEVRON STATION NO. 9-1153
 3126 FERNside BOULEVARD
 ALAMEDA, CA.

PROJECT NO. DG91-153	DRAWN BY M.L. 6/2001
FILE NO. DG91153A	PREPARED BY TAD
REVISION NO. 1	REVIEWED BY



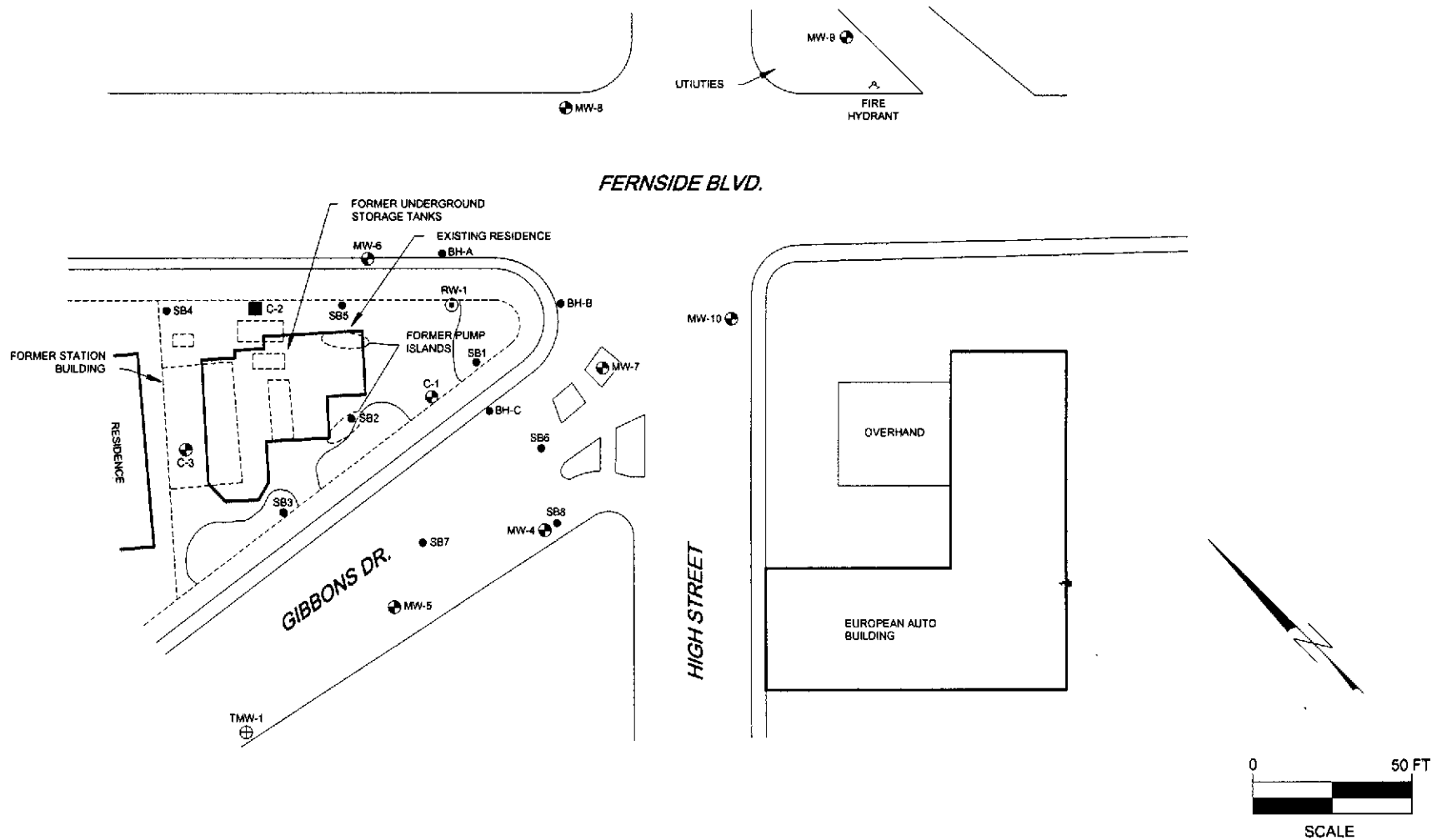


FIGURE 2
SITE MAP

CHEVRON SERVICE STATION NO. 9-1153
3126 FERNSIDE BOULEVARD
ALAMEDA, CA.

PROJECT NO. DG91-153	DRAWN BY M.L. 6/21/01
FILE NO. 9-1153 Site	PREPARED BY TAD
REVISION NO. 1	REVIEWED BY

