

1,497,000

470,000

672

482

PER A LIT

LINE

23 RD

PARCEL B (PRIVATE ST)

(SHASTA AVE.)

Abandoned & Closed

EMBARCADERO

STRATTON

PATENT

DIESEL

(489-53 St. Improv Port of Oakland)

WHARF

W.F. Stone & Son Boat Builders

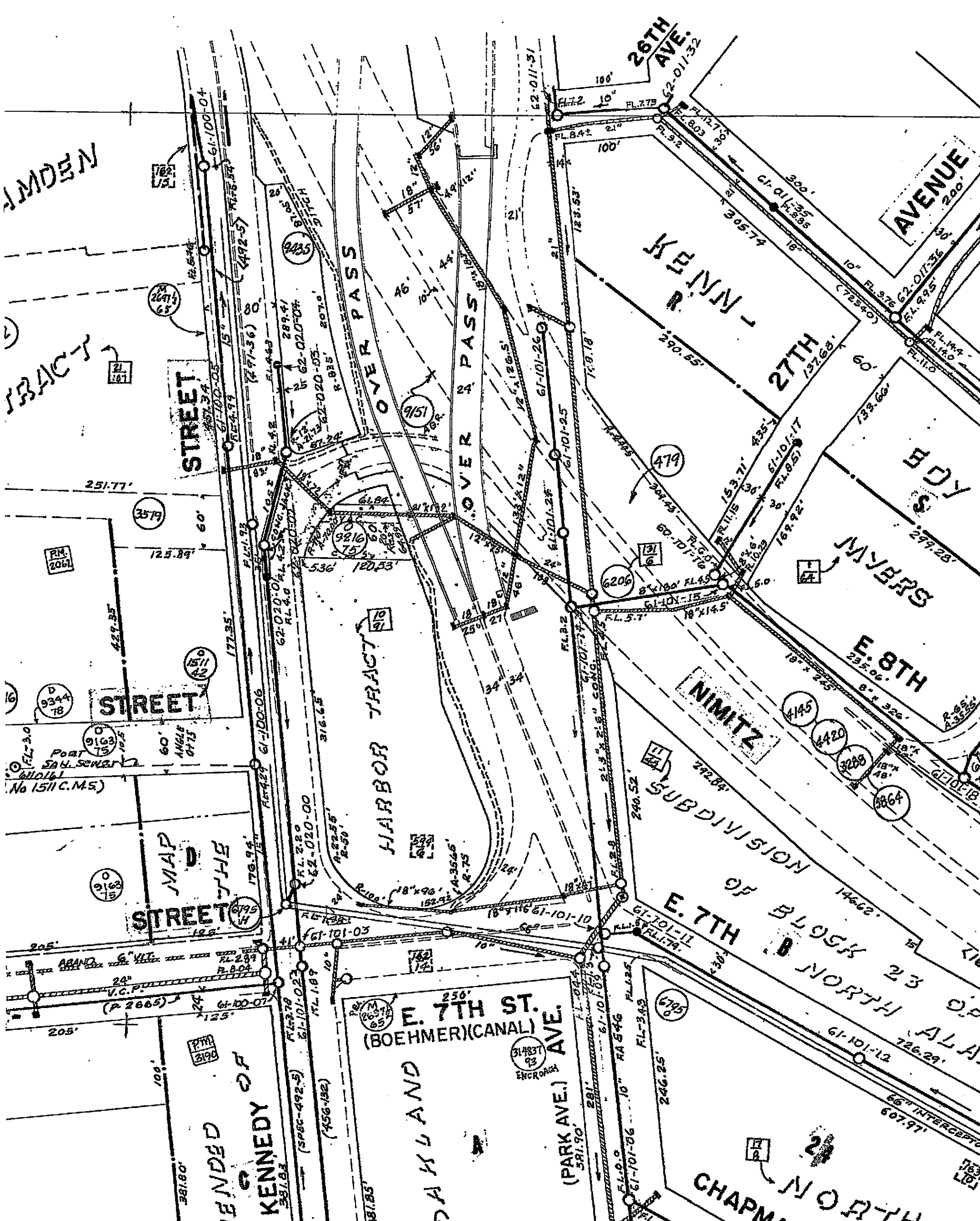
EAST 95'

WHARF

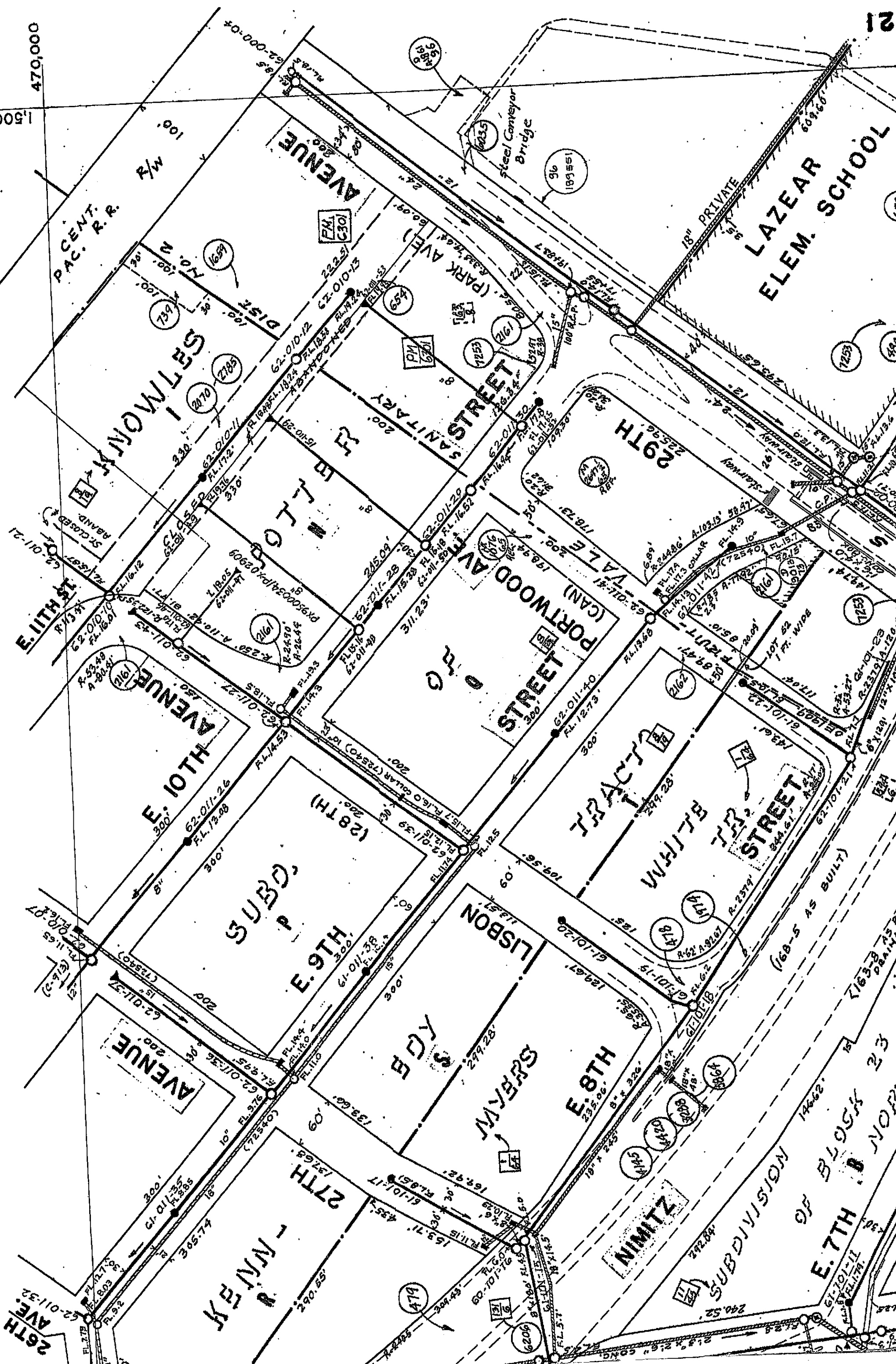
CITY CITY

WHARF

WHARF



1,500.0
470,000



PACENT. R.R.

SETMONT AVENUE

AVENUE

SANITARY STREET (PARK AVENUE)

PORTWOOD AVENUE (CAN)

AVENUE

COGENS (28TH)

LISBON STREET

TRACTS

ELFRIN STREET

STREET

AVENUE

WINTER STREET

27TH

SCB

SPERW STREET

E. 8TH

NIMITZ

SUBDIVISION

E. 7TH

LAZEAR ELEM. SCHOOL

Steel Conveyor Bridge

18" PRIVATE

SUBDIVISION OF BLOCK 23

E. 10TH ST

E. 11TH ST

E. 12TH ST

E. 13TH ST

E. 14TH ST

E. 15TH ST

E. 16TH ST

E. 17TH ST

E. 18TH ST

E. 19TH ST

E. 20TH ST

E. 21TH ST

E. 22TH ST

E. 23TH ST

E. 24TH ST

E. 25TH ST

E. 26TH ST

E. 27TH ST

E. 28TH ST

E. 29TH ST

E. 30TH ST

E. 31TH ST

E. 32TH ST

E. 33TH ST

E. 34TH ST

E. 35TH ST

E. 36TH ST

E. 37TH ST

E. 38TH ST

E. 39TH ST

E. 40TH ST

E. 41TH ST

E. 42TH ST

E. 43TH ST

E. 44TH ST

E. 45TH ST

E. 46TH ST

E. 47TH ST

E. 48TH ST

E. 49TH ST

E. 50TH ST

E. 51TH ST

E. 52TH ST

E. 53TH ST

E. 54TH ST

E. 55TH ST

E. 56TH ST

E. 57TH ST

E. 58TH ST

E. 59TH ST

E. 60TH ST

E. 61TH ST

E. 62TH ST

E. 63TH ST

E. 64TH ST

E. 65TH ST

E. 66TH ST

E. 67TH ST

E. 68TH ST

E. 69TH ST

E. 70TH ST

E. 71TH ST

E. 72TH ST

E. 73TH ST

E. 74TH ST

E. 75TH ST

E. 76TH ST

E. 77TH ST

E. 78TH ST

E. 79TH ST

E. 80TH ST

E. 81TH ST

E. 82TH ST

E. 83TH ST

E. 84TH ST

E. 85TH ST

E. 86TH ST

E. 87TH ST

E. 88TH ST

E. 89TH ST

E. 90TH ST

E. 91TH ST

E. 92TH ST

E. 93TH ST

E. 94TH ST

E. 95TH ST

E. 96TH ST

E. 97TH ST

E. 98TH ST

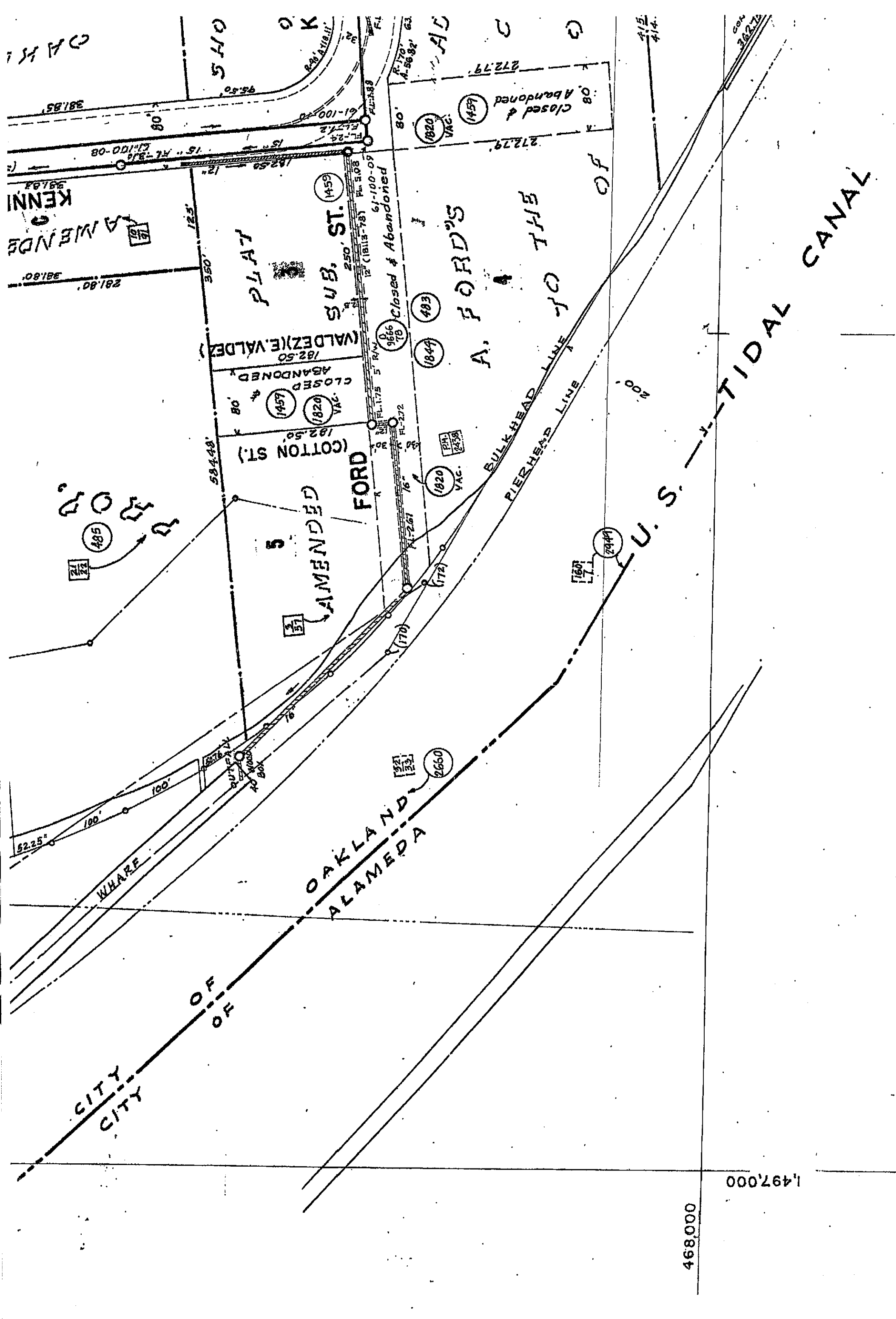
E. 99TH ST

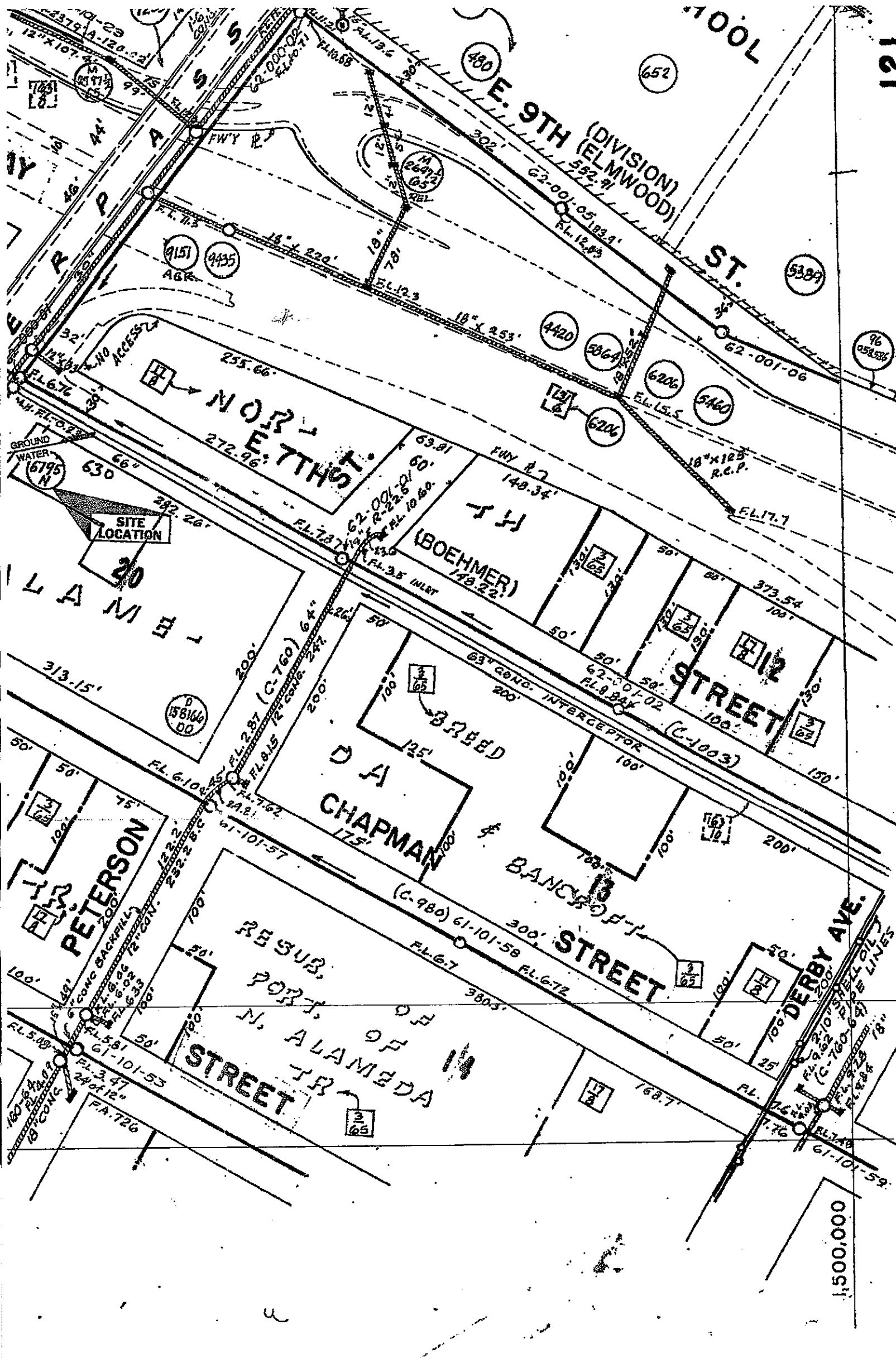
E. 100TH ST

540. 23rd AVE. E. 10th AVE. 29th AVE. & E. 8th ST. 6-20-78
9344-78 DIESEL ST. 3-3-78
96058586 - E 9th ST GRANT OF EASEMENT 6-25-96
PM 6301 29th AV / E 10th ST 1-2-97

1,497,000

468,000





NORTH

LEGEND

SANITARY SEWER ———

STORM CONDUIT - - - -

FLOW MONITOR

MANHOLE ○

LAMPHOLE ○

CLEAN OUT

INLET ○

DEED REFERENCE □

MAP REFERENCE □

1497 B 468