



JONAS & ASSOCIATES INC.

Environmental Consultants

2815 Mitchell Drive, Suite 209 • Walnut Creek, CA 94598 • Tel: (510) 933-5360 • Fax: (510) 933-5362
 925 925

Ms. Eva Chu
 Hazardous Materials Specialist
 Alameda County Environmental Health Services
 1131 Harbor Bay Parkway, Second Floor
 Alameda, California 94502
 (510) 567-6762; 337-9335 fax

April 5, 1999

Verbal approval to install fan. When done, can proceed with closure.

Subject: Risk Management Plan.

Project: Former PACO Pumps, 9201 San Leandro Street, Oakland, California.
 J&A #: PCO-220

Dear Ms. Chu:

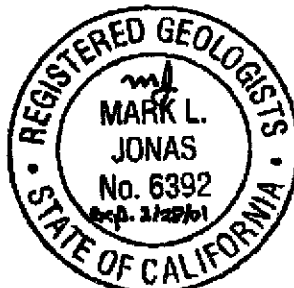
This correspondence presents a Risk Management Plan to increase ventilation in an enclosed room downgradient from a former underground storage tank located at the former Paco Pumps' facility, at 9201 San Leandro Street, in Oakland, California. Figure 1 presents a plot of the facility and identifies the room under consideration. The room currently has a four inch concrete/asphalt floor which should inhibit upward migration of vapors. Increasing ventilation in the room should add another layer of safety.

To increase ventilation in the room Paco Pumps proposes to add a shutter-mounted exhaust fan through an outside wall. A light switch for the room would activate the exhaust fan when someone throws the switch upon entering the room. We are currently considering a fan with a free air delivery rate of ~2,800 cubic feet per minute. The room has a volume of ~7,500 cubic feet. Therefore, the air inside the room would be replenished approximately every three minutes. Figure 2 presents a figure with the proposed locations of the exhaust fan and wall switch.

This concludes our proposed approach for a Risk Management Plan to increase ventilation in the enclosed room. We will wait for your approval prior to implementing the plan.

Sincerely,
 JONAS & ASSOCIATES INC.

Mark
 Mark Jonas, R.G.
 J&A Project Manager



20 air exchanges/hour

attachments: Figures 1 "Facility Map" & Figure 2 "Proposed Ventilation System".

cc: Distribution

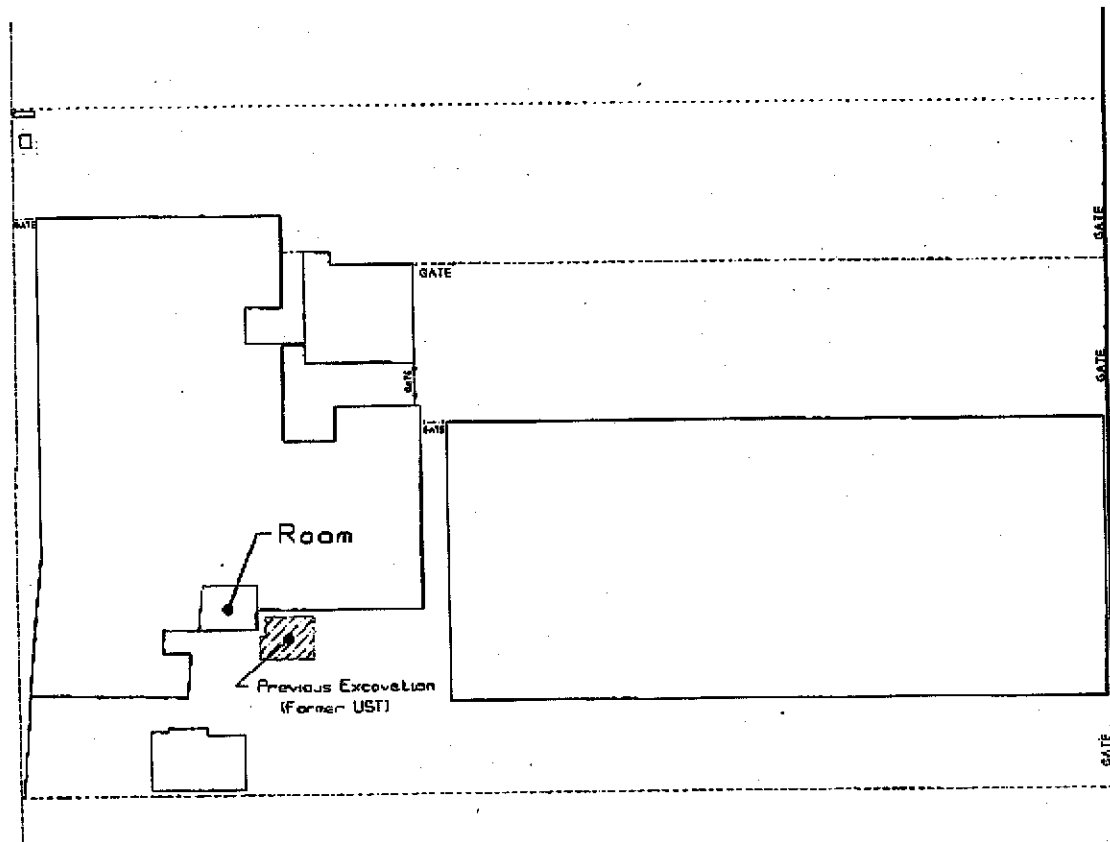
2800

20/3

9ltr4-5.pco



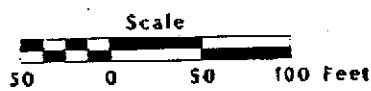
San Leandro Street



Facility Map

Former PACO PUMPS
9201 San Leandro Street
Oakland, California

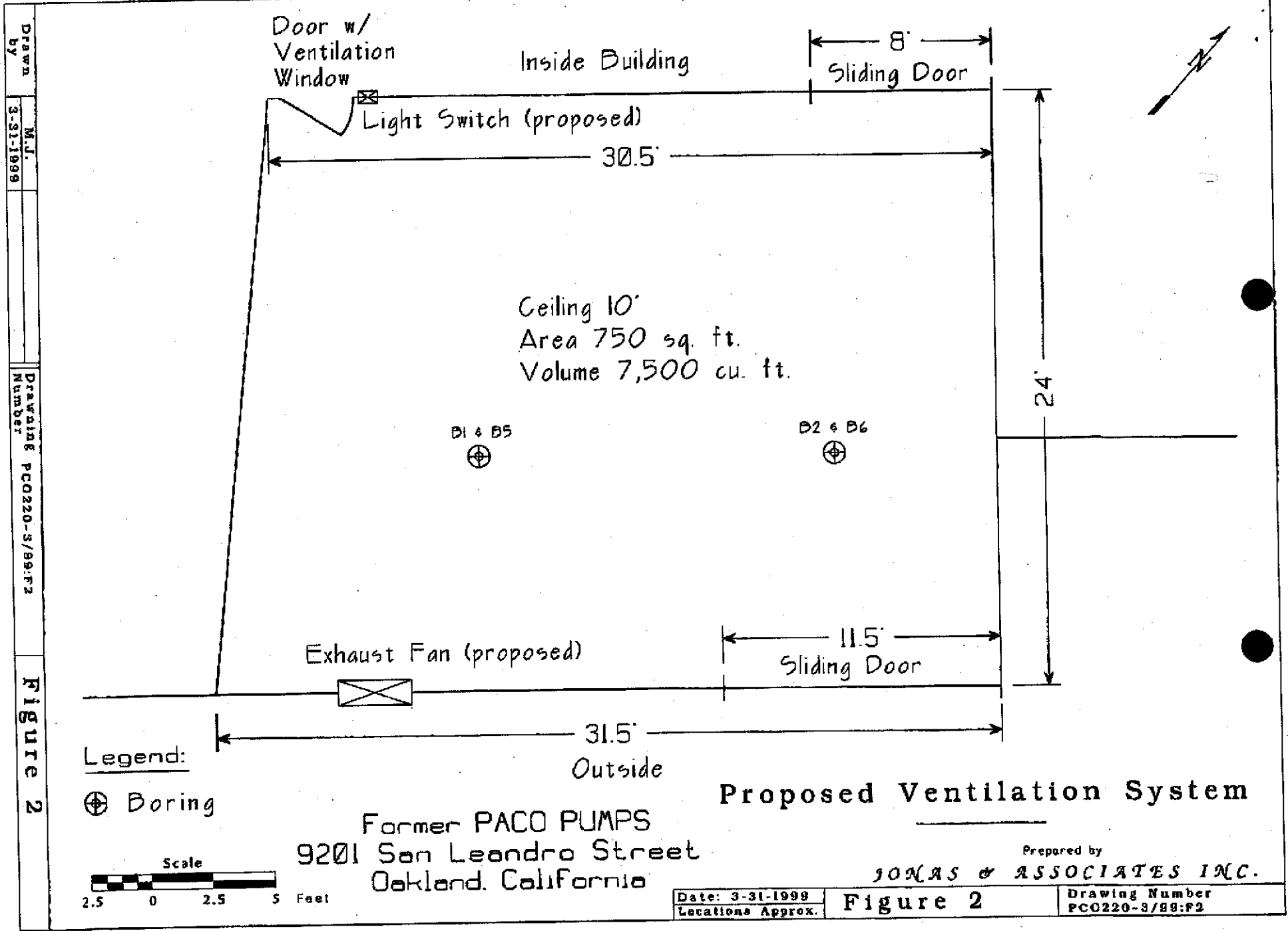
Prepared by
JONAS & ASSOCIATES INC.



| | | | |
|----------|-----------|----------------|-----------------|
| Drawn by | M.J. | Drawing Number | PC0220-facility |
| | 3-31-1999 | | |

Figure 1

| | | |
|-------------------|----------|-----------------|
| Date: 3-31-1999 | Figure 1 | Drawing Number |
| Locations Approx. | | PC0220-facility |



Drawn by M.J. 3-31-1999
 Drawing Number PCO220-3/89:F2
Figure 2

Legend:
 ⊕ Boring

Scale
 2.5 0 2.5 5 Feet

Proposed Ventilation System
 Former PACO PUMPS
 9201 San Leandro Street
 Oakland, California

Prepared by
JONAS & ASSOCIATES INC.
 Date: 3-31-1999
 Locations Approx. **Figure 2** Drawing Number PCO220-3/89:F2

Jonas & Associates Inc.

DOCUMENT DISTRIBUTION

Former Paco Pumps Facility
9201 San Leandro Street, Oakland, California:

Small Business Administration
District Counsel
Small Business Administration
455 Market Street, Sixth Floor
San Francisco, California 94105

Lender
Kathryn J. Sennott
District Manager
Heller Financial
50 Beale Street, 16th Floor
San Francisco, California 94105

Borrower
Leonard M. Silvani
GP Holding, LLC
P.O. Box 14046
Oakland, California 94614

BAEDC
James Baird
Bay Area Employment Development Company
1801 Oakland Boulevard, Suite 300
Walnut Creek, California 94596

Indemnitor
Mr. John Lilla
Paco Pumps, Inc.
16801 Greenspoint Park Drive, Suite 355
Houston, Texas 77060