

DENOTES EXISTING GRADES PER TOPOGRAPHY SUPPLIED BY OWNER 1986

(E) FIRE SPRINKLER RISER TO REMAIN

(E) BUILDING TO REMAIN

UNDERGROUND 2 1/2" CONDUIT FOR ELECTRICAL SUPPLY TO TRUCK WASH W/4-2/0 WIRES - REMOVE WIRES SEE SHEET A-3

(E) CONC. PAVING TO REMAIN

UNDERGROUND FIRE WATER PIPELINE TO REMAIN (ASSUMED LOCATION)

REMOVE (E) GUARD POSTS

(E) S.D. TO REMAIN TP+8.5

REMOVE (E) FUEL DISPENSOR TYP. OF 3

REMOVE ALL PAVING, CURBS, FENCING & CONCRETE IN SLASHED AREA TO "SUBGRADE" RELOCATE ALL FENCING

ASPHALT PAVING

REMOVE (E) ASPHALT BERM

REMOVE GUARD POSTS (4EA.)

RELOCATE (E) P.I.V. VALVE, SEE PLAN BELOW

(E) S.D. TO REMAIN TP+8.4

REMOVE (E) LIGHT STANDARD

REMOVE FUEL PIPING

PANEL "HA" REMOVE 12 DISCONNECT PANEL "L" REMOVE ISLAND C

(E) CATCH BASIN TO REMAIN T.O.P.+7.4 FL+4.7

(E) TRENCH DRAIN TO REMAIN

REMOVE EXISTING 6" CONC. PAVING & SUBGRADE TO PAVEMENT SUBBASE

EXISTING TRUCK WASH BLDG TO REMAIN - SEE SHEET A-2

RELOCATE TRASH BIN, SEE PLAN BELOW

REMOVE GATE

24'-0" U.G. TANK TO REMAIN

REMOVE (E) COBRA LIGHT

RELOCATE (E) FIRE HYDRANT SEE PLAN BELOW  
RELOCATE (E) 30AMP ELECTRICAL PANEL FOR TRASH COMPACTOR SEE PLAN BELOW

(E) LANDSCAPE AREA TO REMAIN  
(E) CURB TO REMAIN

EXISTING UNDERGROUND FIRE WATER PIPELINE TO REMAIN  
VENT PIPES TO REMAIN

RELOCATE TRASH COMPACTOR, SEE PLAN BELOW

REMOVE GATE

RELOCATE 137 L.F. EXISTING FENCE SEE PLAN BELOW

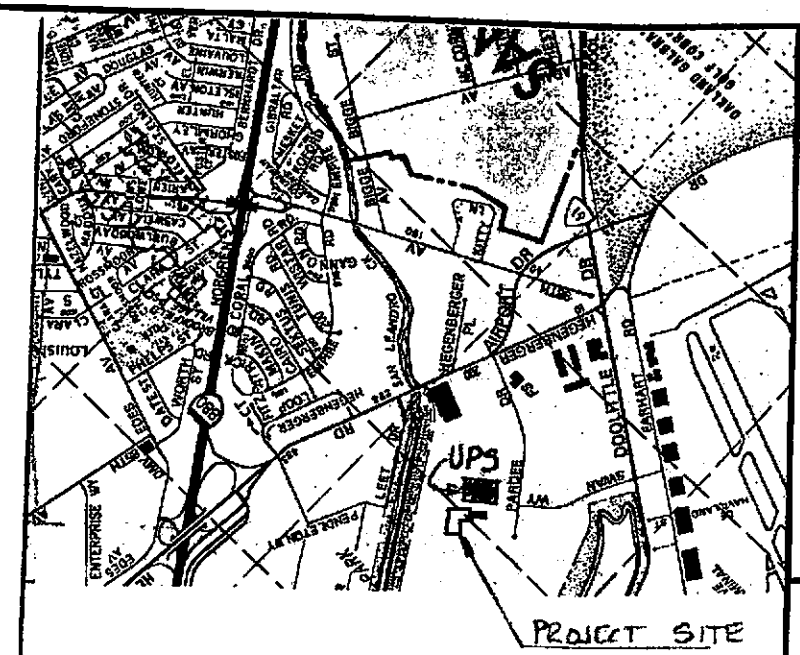
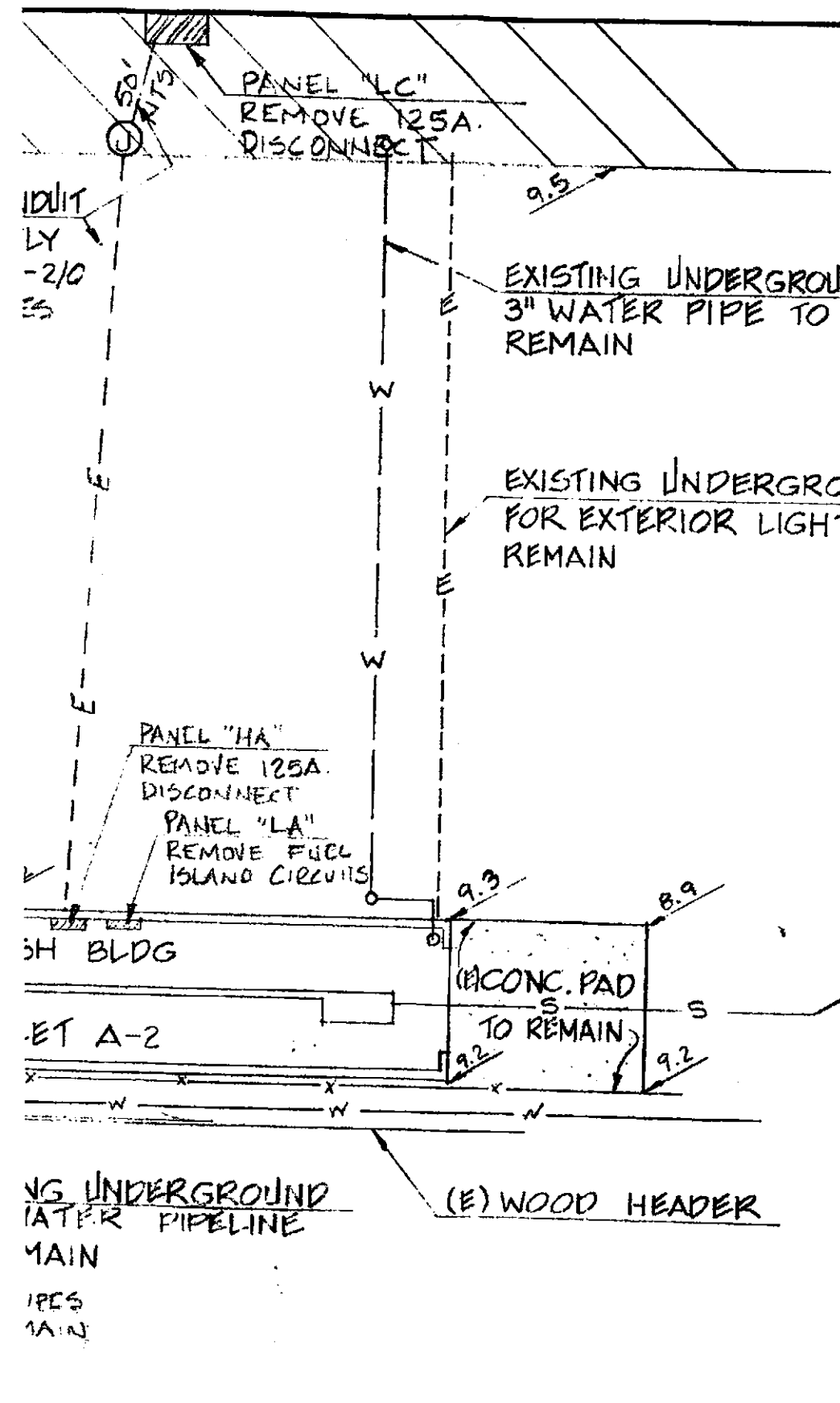
REMOVE (E) 3/4" SURFACE MOUNTED CONDUIT

DENOTES EXTENT OF FENCE REMOVAL

(E) PARKING LIGHT TO REMAIN

(E) CONC. CURB TO REMAIN

ASPHALT PAVING



VICINITY MAP

(E) STORM DRAIN  
TO REMAIN T.P. 8.2  
F.L. 5.2

(E) 6" SEWER  
PIPELINE TO  
REMAIN

1 1/2" DEEP SAW CUT  
JOINT FILL W/SEA-  
LANT

(N) 5 1/2" CONG. SLAB

(E) BASE TO  
REMAIN

(N) 12" DIRT  
(REUSE EX'IST)

(N) CONCRETE  
CURB

5 1/2" CONCRETE  
SLAB

(E) ASPHALT  
PAVING

(N) 2X12 EDWD  
HEADER

8" x 4" 4'-0"  
NT.S.

110"

#4@12"

CONT. #4 BAR  
TOP & BOTTOM

3" CLR.



W. B. CLAUSEN STRUCTURAL ENGINEER

780 WEST GRAND AVENUE  
OAKLAND, CALIFORNIA 94612  
TELEPHONE (415) 444-4144

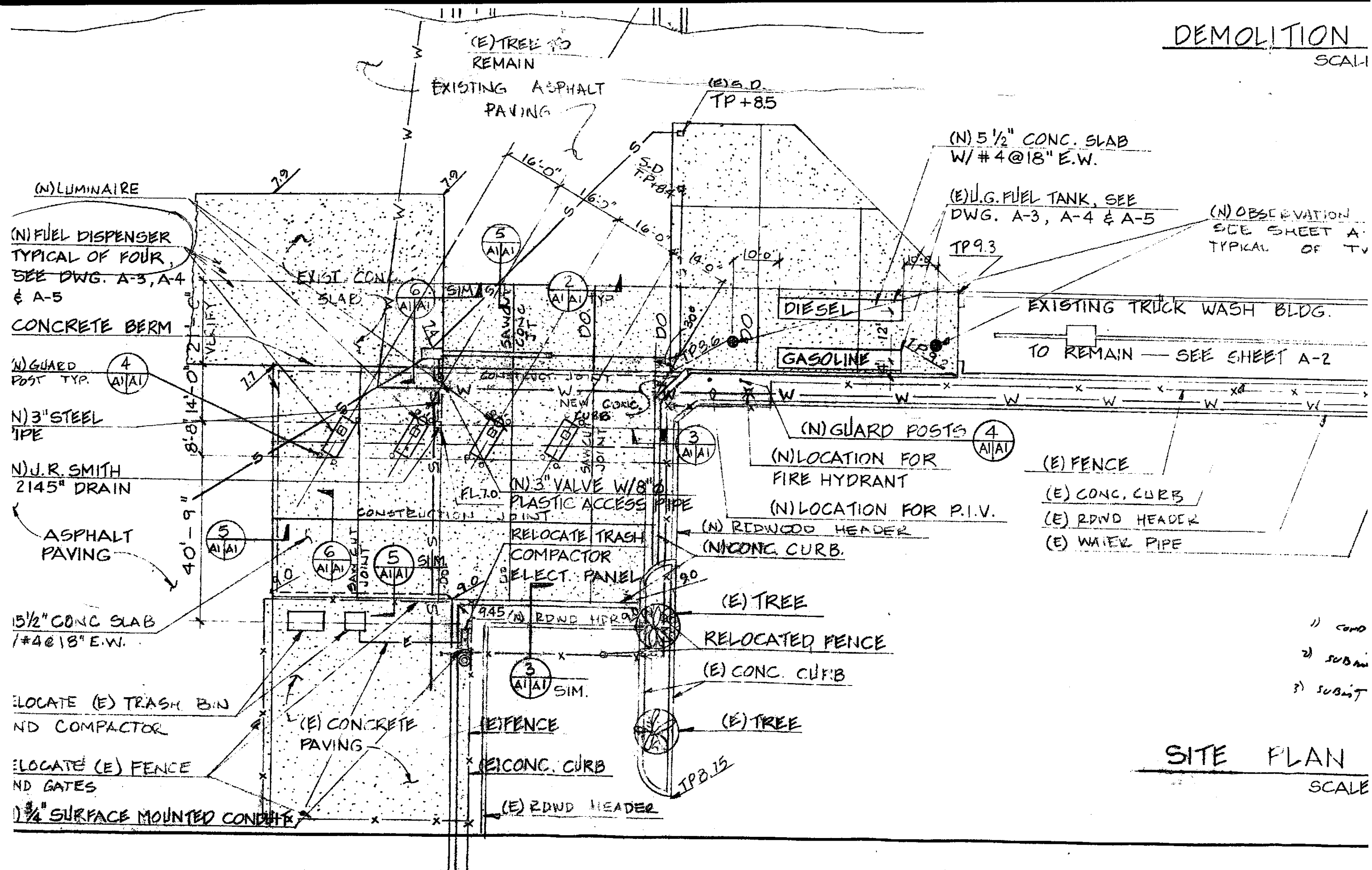
DRAWN BY  
S.W.

CHECKED BY  
KCC

ENGINEER & NO.

# DEMOLITION

SCALE



(N) OBSERVATION  
SEE SHEET A  
TYPICAL OF TV

EXISTING TRUCK WASH BLDG.  
TO REMAIN — SEE SHEET A-2

- (E) FENCE
- (E) CONC. CURB
- (E) RDWD HEADER
- (E) WATER PIPE

- 1) COND
- 2) SUBMIT
- 3) SUBMIT

# SITE PLAN

SCALE

# SECTION PLAN

SCALE: 1" = 20'-0"

ELEVATION WELL  
SHEET A-3  
OF TWO

**ACCEPTED**  
DEPARTMENT OF ENVIRONMENTAL HEALTH  
470 - 27th Street, Third Floor  
Oakland, CA 94612  
Telephone: (415) 874-7237

These plans have been reviewed and found to be acceptable and essentially meet the requirements of State and local health laws. Changes to your plans indicated by this Department are to assure compliance with State and local laws. The project proposed herein is now released for issuance of any required building permits for construction.

One copy of these accepted plans must be on the job and available to all contractors and craftsmen involved with the construction and installation.

Any change or alterations of these plans and specifications must be submitted to this Department and to the Fire and Building Inspection Department to determine if such changes meet the requirements of State and local laws. Notify this Department at least 48 hours prior to the following required inspections:

- Pressure Test
- Pre-Covering of Tank and Piping
- Final Inspection

Issuance of a permit to operate is dependent on compliance with accepted plans and all applicable laws and regulations.

**THERE IS A FINANCIAL PENALTY FOR NOT OBTAINING THESE INSPECTIONS.**

*[Signature]* 10/18/89

- 1) CONDUCT PRECISION TEST AFTER INSTALLATION
- 2) SUBMIT AS BUILT WITHIN 30 DAYS OF COMPLETION
- 3) SUBMIT STATE FORMS A&B.

# PLAN

SCALE: 1" = 20'-0"



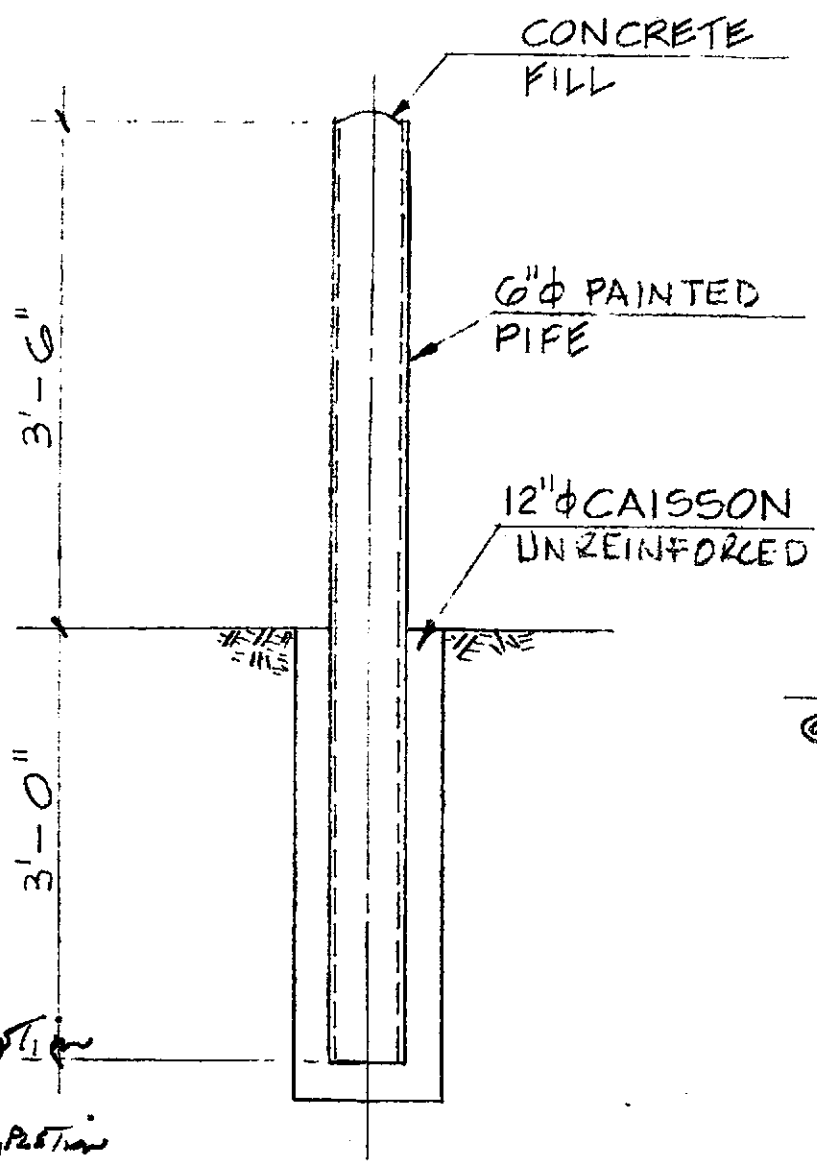
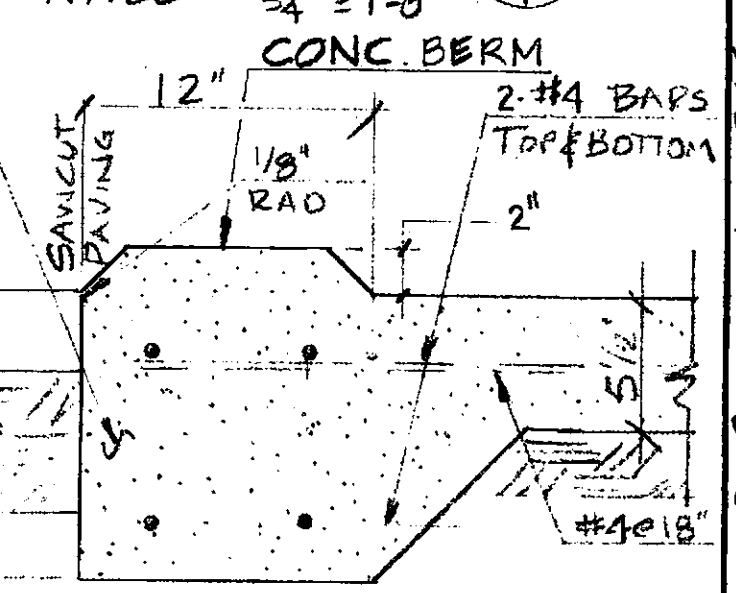
## TYPICAL SAW CUT JOINT

SCALE: 3/4" = 1'-0"

3/4" = 1'-0"  
(E) ASPHALT PAVING  
(E) BASE  
(N) CONG. SLAB

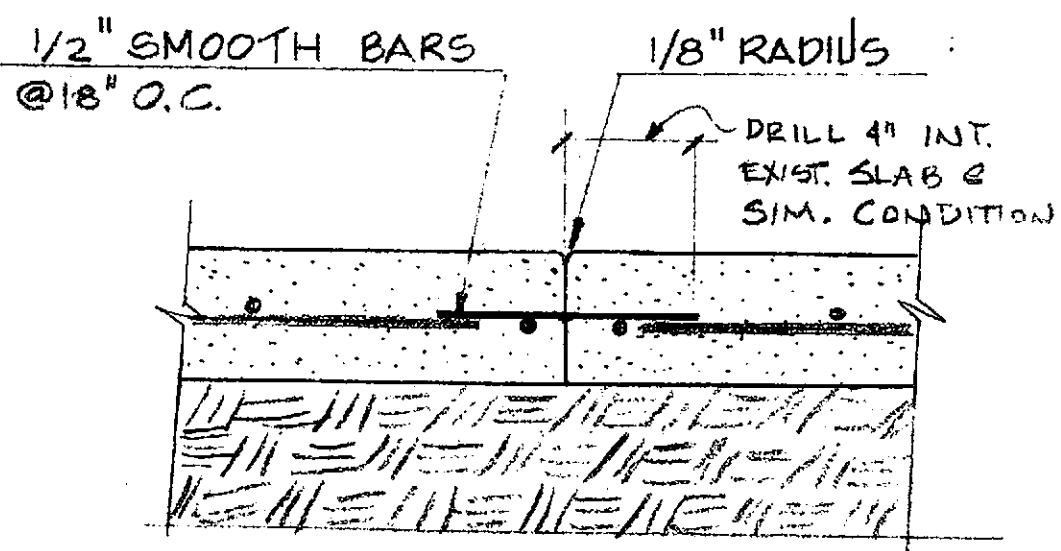
## RETAINING WALL

SCALE: 3/4" = 1'-0"



## TYPICAL EDGE OF CONCRETE SLAB

SCALE: 1 1/2" = 1'-0"



## GUARD POST DETAIL

SCALE: 3/4" = 1'-0"

## TYPICAL CONTROL JOINT

SCALE: 1 1/2" = 1'-0"

OAKLAND CAR WASH RETROFIT  
UNITED PARCEL SERVICE  
8400 PARDEE STREET  
OAKLAND, CALIFORNIA 94621  
SITE PLAN & SITE DEMOLITION PLAN

NO.	DATE	REVISIONS
1	5/15/89	BID DOCUMENT

DATE ISSUED  
**MAY 5, 1989**

**A-1**  
OF SHEETS

JOB NUMBER  
**7610**

REMOVE (E) EMERGENCY FUEL SYSTEM SHUT DOWN SWITCH

FIRE EXTINGUISHER TO REMAIN

EXTERIOR FLOOD LIGHT TO REMAIN

DRILL (E) CONC 3/8" Ø

(N) CONC.

(E) CONC. FLOOR

REPLACE (E) EARTH FILL

(N) #4 BARS @ 12"

(N) PIPE OR CONDUIT

CONC FLOOR REPLACEMENT



(N) MONITORING CONSOLE 34" x 1'-0" FURNISHED BY OWNER

(N) MCC BY OTHERS

(N) SEDIMENT TRAP

INSTALL 3/4" CONDUIT FOR FUTURE ELECT. WIRING

(E) DOOR

(E) CONC. WALL

REMOVE CONCRETE TRENCH DRAIN & SUBGRADE TO 4' BELOW FLOOR SLAB ELEVATION

REMOVE CONC. FLOOR

(E) DOOR

REMOVE (E) CONTROL CENTER REMOVE 125A & 15 BREAKER

27'-6"

7'-0"

1'-0"

(E) EXTERIOR LIGHTS & CONDUIT TO REMAIN

HIGH VOLTAGE PANEL "HA" TO REMAIN

(E) CONCRETE

NOTE: REMOVE ALL TRUCK WASH EQUIPMENT IN BLDG

SAW CUT CONCRETE

SWITCH TO REMAIN TYP OF 4

REMOVE (E) LIGHTING TYPICAL OF 20

TRUCK WASH & DEMOL SC

MOVE (E) MOTOR  
TROL CENTER

(E) 2" WATER RISER TO REMAIN,  
REMOVE ALL PLUMBING AT  
CEILING LEVEL

REMOVE ALL EXPOSED PLUMBING  
ABOVE +8'-0"

TRANSFORMER TO REMAIN

VE 125A & 15A  
PANEL

CONCRETE FLOOR

LOW VOLTAGE PANEL  
"LA" TO REMAIN

L TRUCK  
IN BLDG

RECEPTICAL  
TO REMAIN

EXIST SUMP TO REMAIN

(E) 2" WATER PIPE  
TO REMAIN BELOW  
3'-0". REMOVE ALL  
PIPE ABOVE 3'-0"

FIRE EXTINGUISHER  
TO REMAIN

(E) EXTERIOR  
LIGHTS & CONDUIT  
TO REMAIN

2'-0" 3'-0"

SAW CUT & REMOVE  
CONCRETE FLOOR SLAB

# DEMOLITION PLAN

SCALE: 3/16" = 1'-0"



(E) CONG WALL

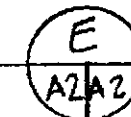
(N) 2-2" GALV.  
PIPE

(E) CONG. FLOOR

(E) CONG. SUMP

RECLAIM PIPE ELEV

14" = 1'-0"



WALL TO REMAIN



W. B. CLAUSEN STRUCTURAL ENGINEER

780 WEST GRAND AVENUE  
OAKLAND, CALIFORNIA 94612  
TELEPHONE (415) 444-4144

DRAWN BY

S.W.

CHECKED BY

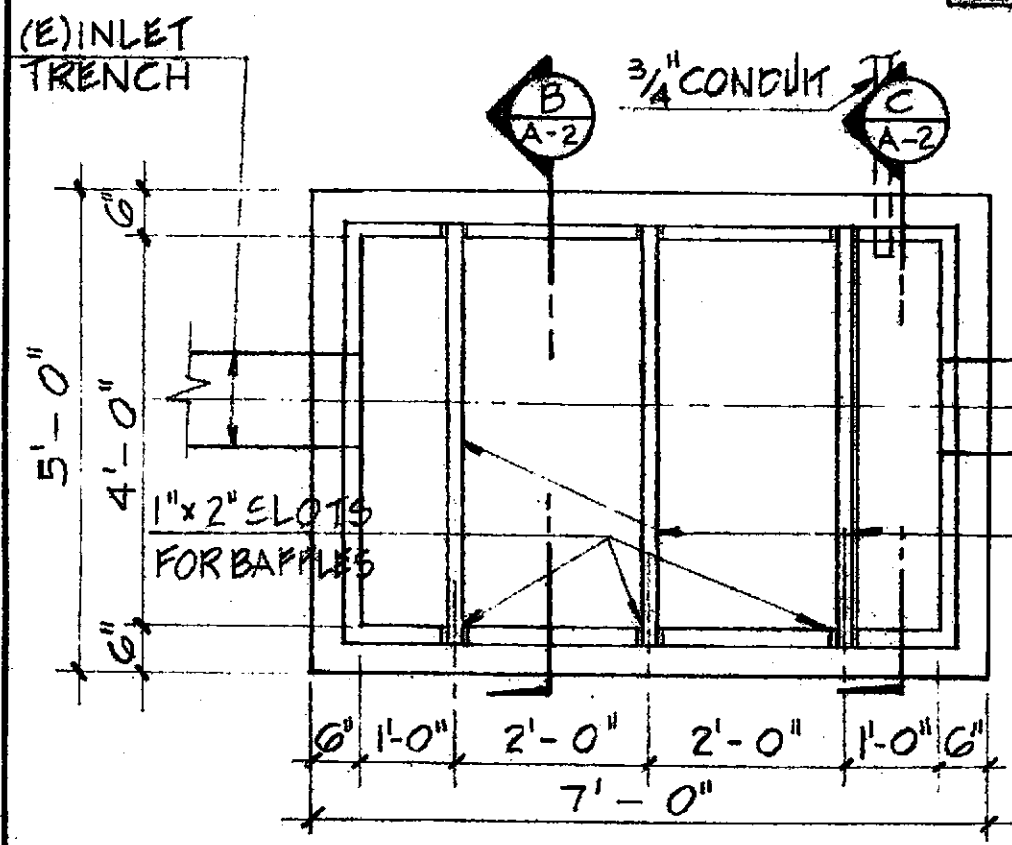
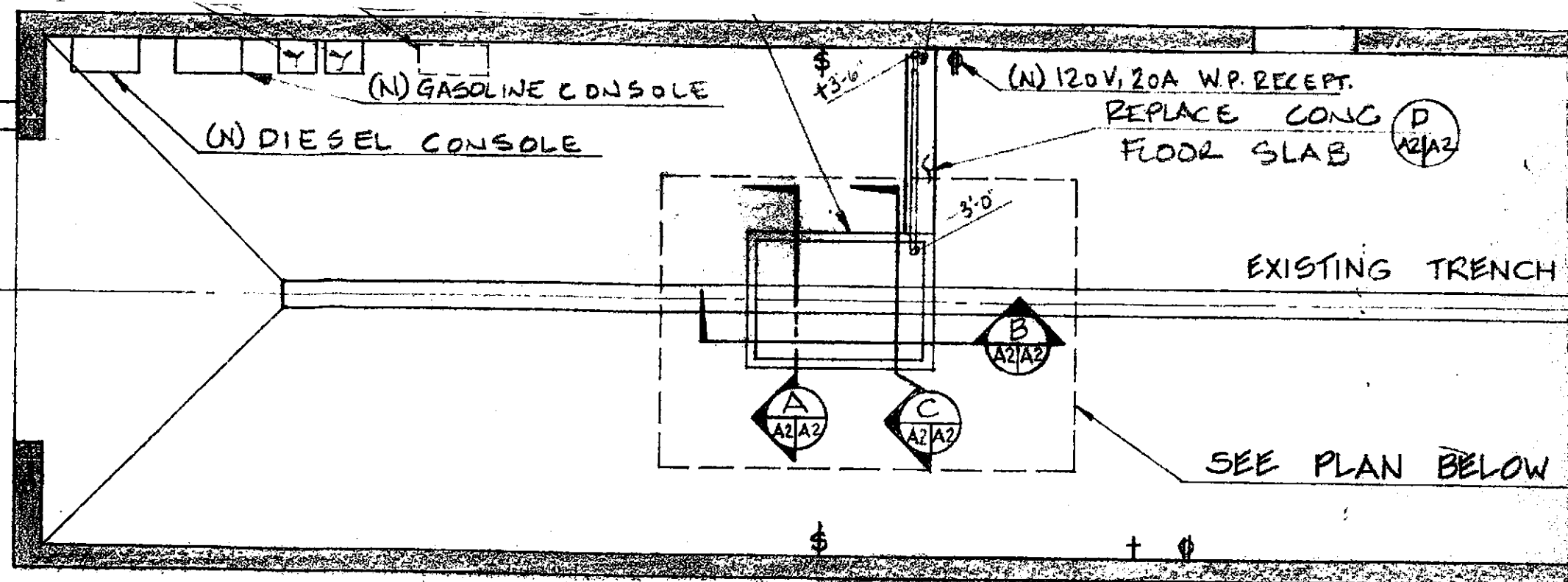
KLL

ENGINEER & NO.

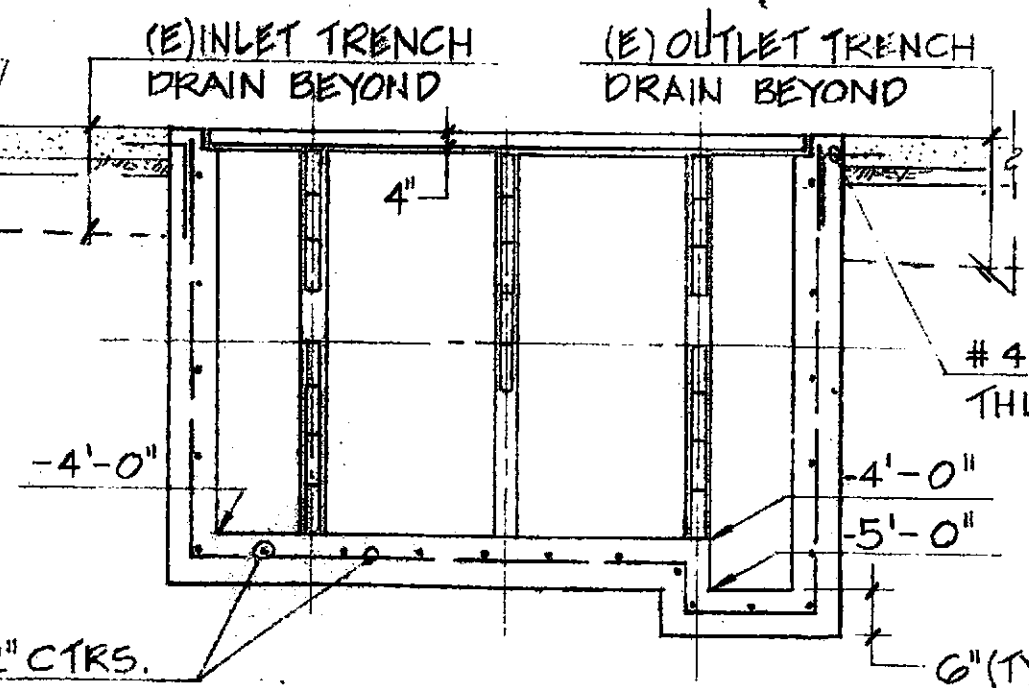
SOFIT

14021

PLAN



(E) CONCRETE  
 (E) INLET TRENCH DRAIN BEYOND  
 (E) OUTLET TRENCH DRAIN BEYOND  
 2 x 6 RWD. BAFFLES W/ SPACERS AS REQ'D.

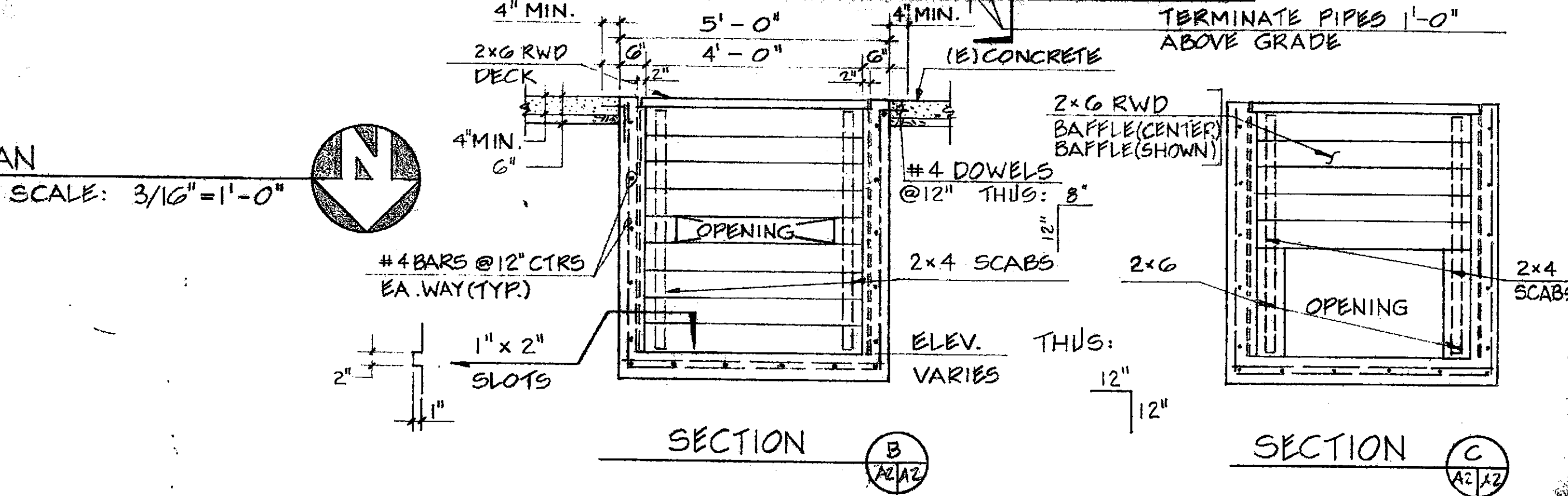
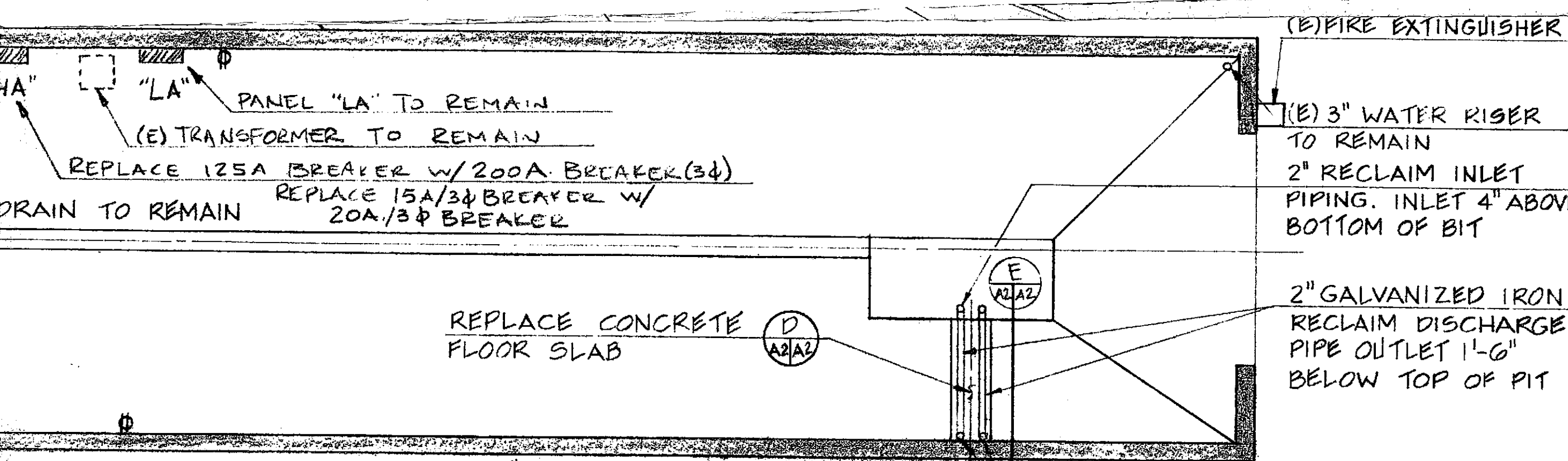


TRUCK WASH PL  
 #4 BARS @ 12"  
 THUS: 8"  
 12"

PLAN

CROSS-SECTION

**A** SEDIMENT TRAP DETAILS  
 SCALE: 1/2" = 1'-0"



GREASE TRAP DETAILS  
SCALE: 1/2" = 1'-0"

OAKLAND CAR WASH RETR UNITED PARCEL SERVICE 8400 PARDEE STREET OAKLAND, CALIFORNIA		TRUCK WASH BUILDING	
REVISIONS	DATE	NO.	DATE ISSUED
1	5/15/89	1	MAY 5 1989
BIO DOCUMENTS		A-2	
JOB NUMBER		7610	



GENERAL NOTES - FUELING

1. Contractor shall verify fuel tanks are not siphoned together. If they are, contractor shall remove siphon.
2. Dispensers 1 & 4 are dual hose dispensers. Dispensers 2 & 3 are single hose dispensers.
3. Construction sequencing shall be as follows:
  - a. New dispensers shall be installed and made functional ready for tie-in.
  - b. North tank shall be connected to new dispensers and made operational prior to disconnecting South tank.
  - c. South tank shall be converted to Diesel and be connected to new dispensers.

(E) UNDERGROUND 2 1/2" CONDUIT  
PULL 4-4/0 WIRES AND  
CONNECT PANEL "HA" TO "HC"

⊕ NEW OBSERVATION  
WELL, TYP. OF 2

⊕ DIESEL  
DISPENSER

1" C, 2-#12  
2-1" SPARE  
DISPENSER

DENOTES  
DISPENSER NO.

(N) LUMINAIRE

3/4" C, 2-#12  
LUMINAIRE

1" C, 4-#12  
DISPENSER

⊕ GAS  
DISPENSER

3/4" C, 2-#10  
COMPACTOR

(N) EMERGENCY SHUTDOWN  
WEATHER PROOF PANELS

HOSE SWIVEL

DISPENSER

ON/OFF SWITCH

NOZZLE

FLEXIBLE HOSE  
BODY

(N) DIESEL  
CONSOLE "DC"

(N) GASOLINE  
CONSOLE "GC"

3/4" C, 4-#12  
CONSOLE

(N) MCC BY OTHERS

10,000 GALLON DIESEL TANK

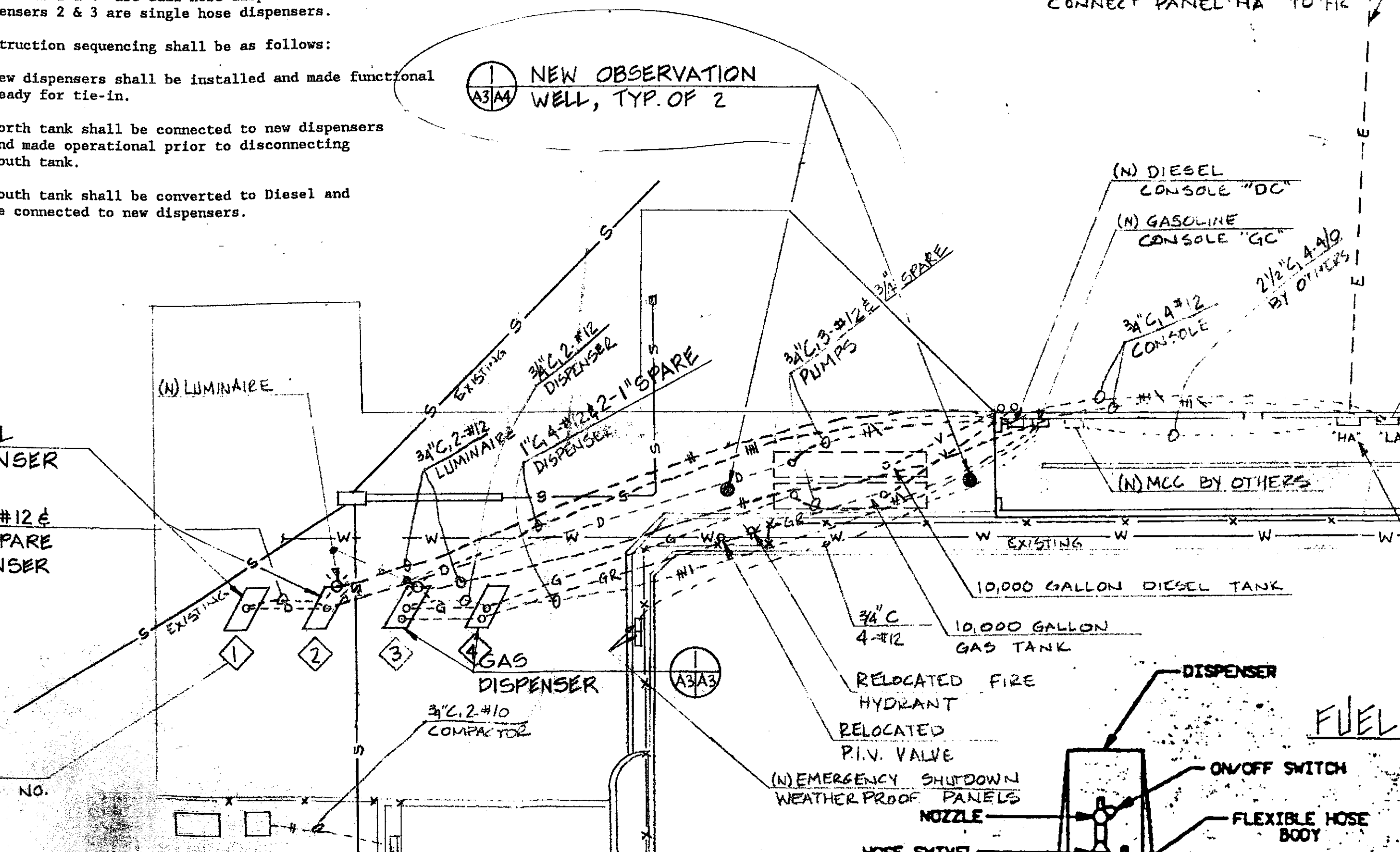
3/4" C  
4-#12  
10,000 GALLON  
GAS TANK

RELOCATED FIRE  
HYDRANT

RELOCATED  
P.I.V. VALVE

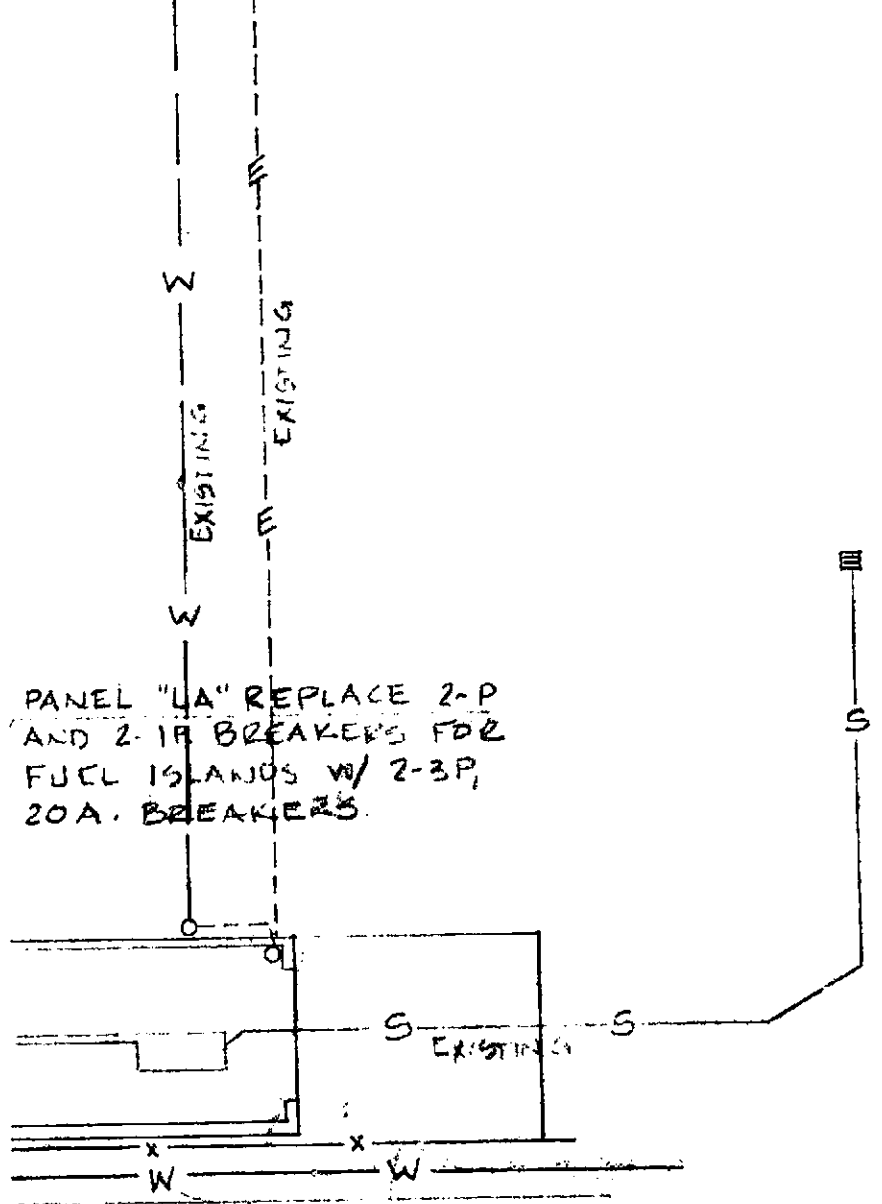
FUELING

50  
PTS

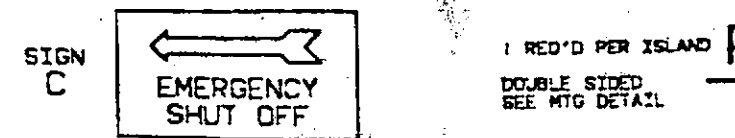
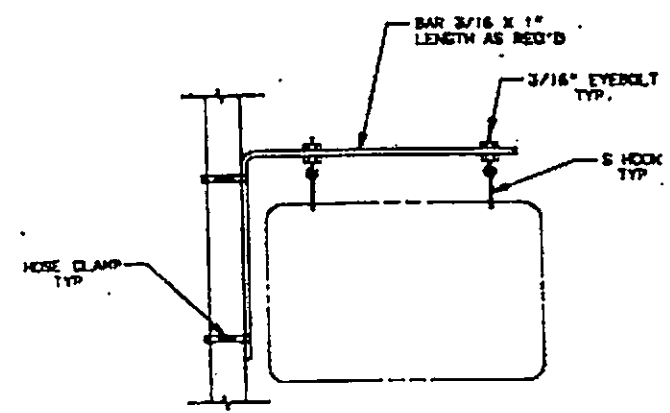
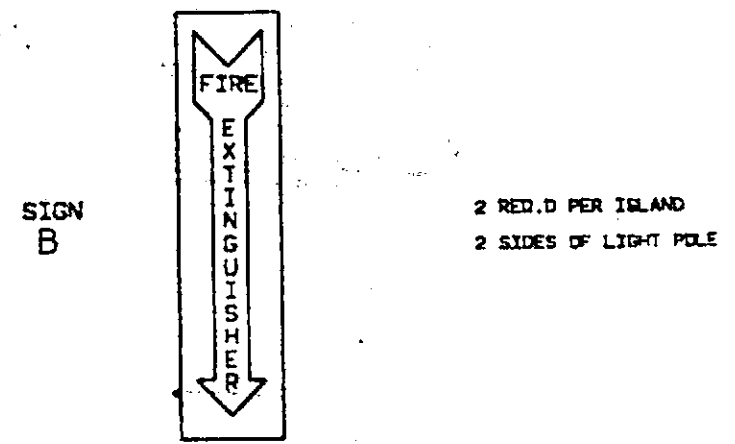
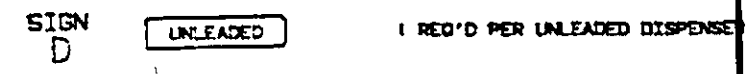
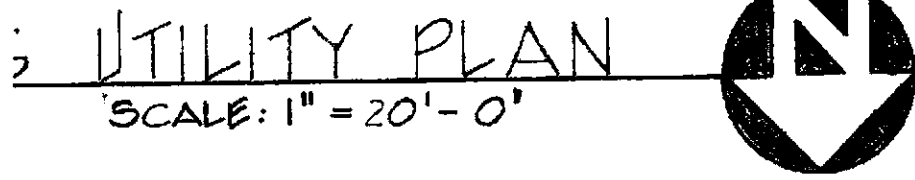


# SIGN DETAILS

PANEL "LC" REPLACE  
25 A. DISCONNECT  
NK225 0A. DISCONNECT



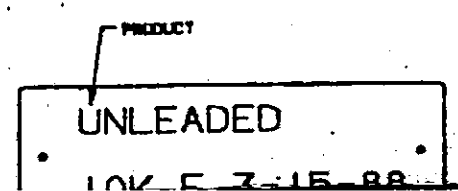
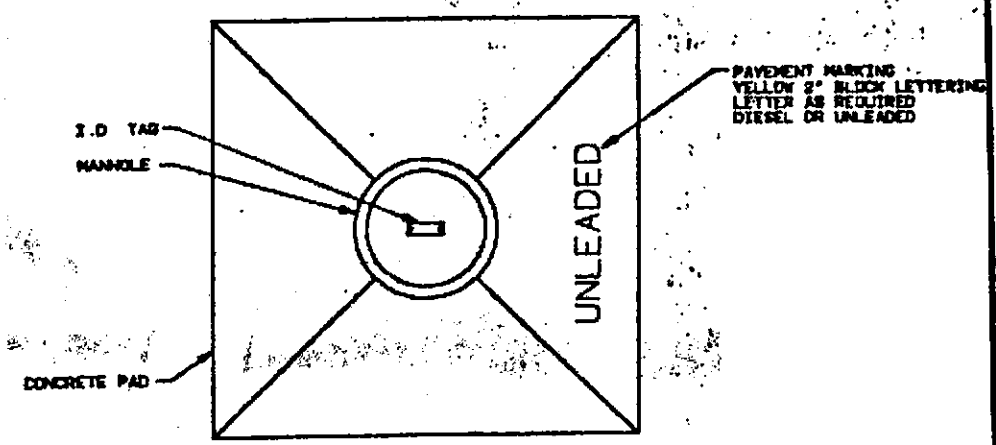
PANEL "HA" REPLACE 125A.  
DISCONNECT W/ 200 A. DISCONNECT  
"PANEL BUSSED FOR 225A."



## PRODUCT IDENTIFICATION

SAMPLE I.D. TAG  
1/4" STAMPED STEEL

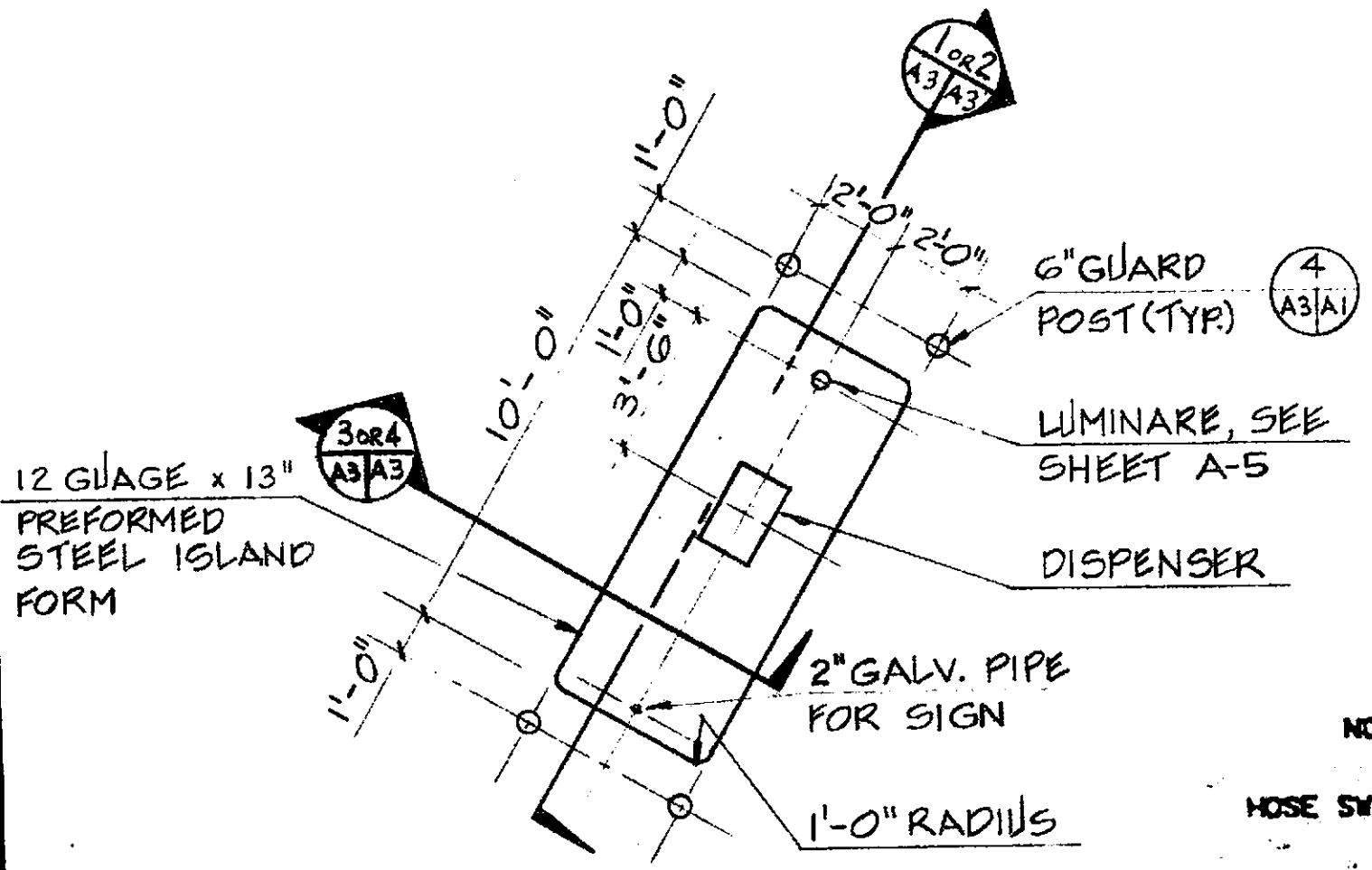
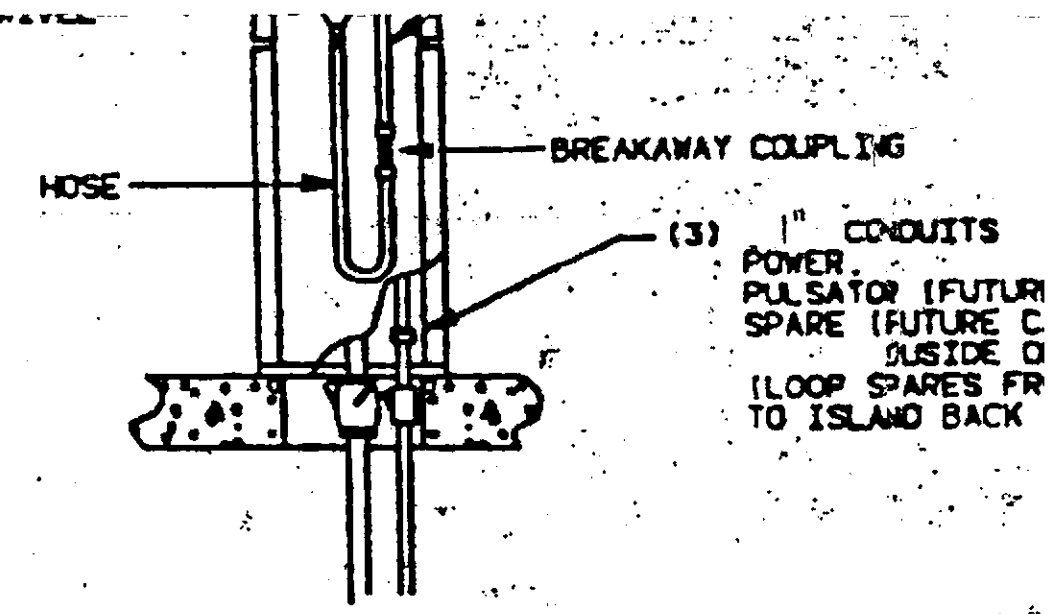
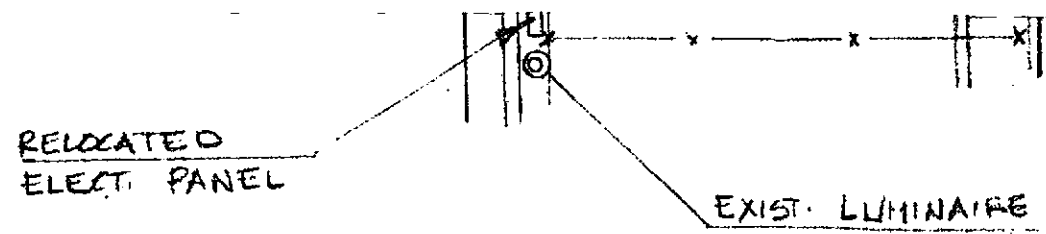
- NOTES:
1. REF. DWGS FUEL-02 & FUEL-03
  2. ATTACH TO CENTER OF MANHOLE COVER AFTER PAINTING WITH TWO #8 SELF THREADING SCREWS
  3. ATTACH TO TUBE WITH .032" SAFETY LOCK WIRE.



W. B. CLAUSEN STRUCTURAL ENGINEER

780 WEST GRAND AVENUE  
OAKLAND, CALIFORNIA 94612  
TELEPHONE (415) 444-4144

DRAWN BY S.W.	CHECKED BY	ENGINEER & NO.
------------------	------------	----------------

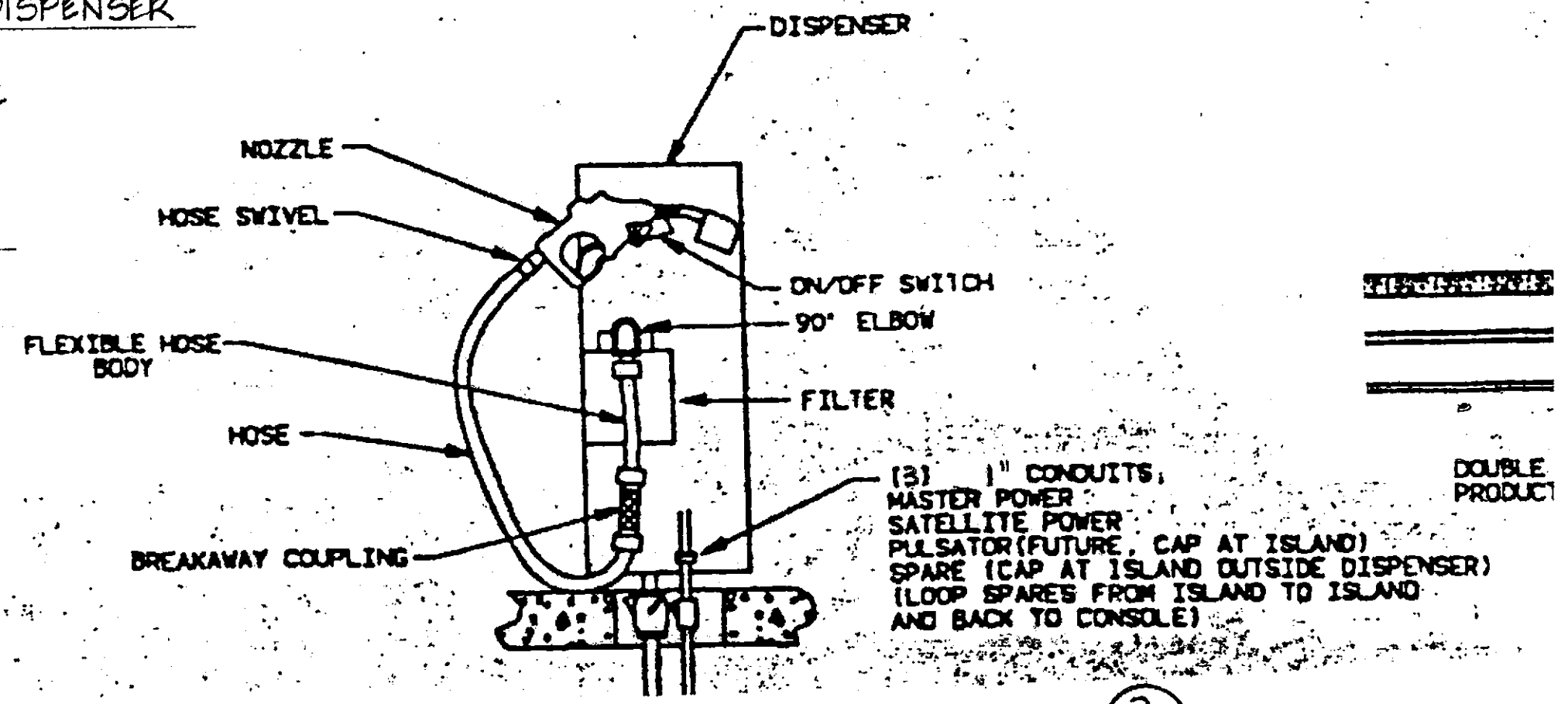


GASOLINE DISPENSER

4 A3/A3

TYPICAL FUEL DISPENSER PLAN

SCALE: 1/4" = 1'-0"



DIESEL DISPENSER

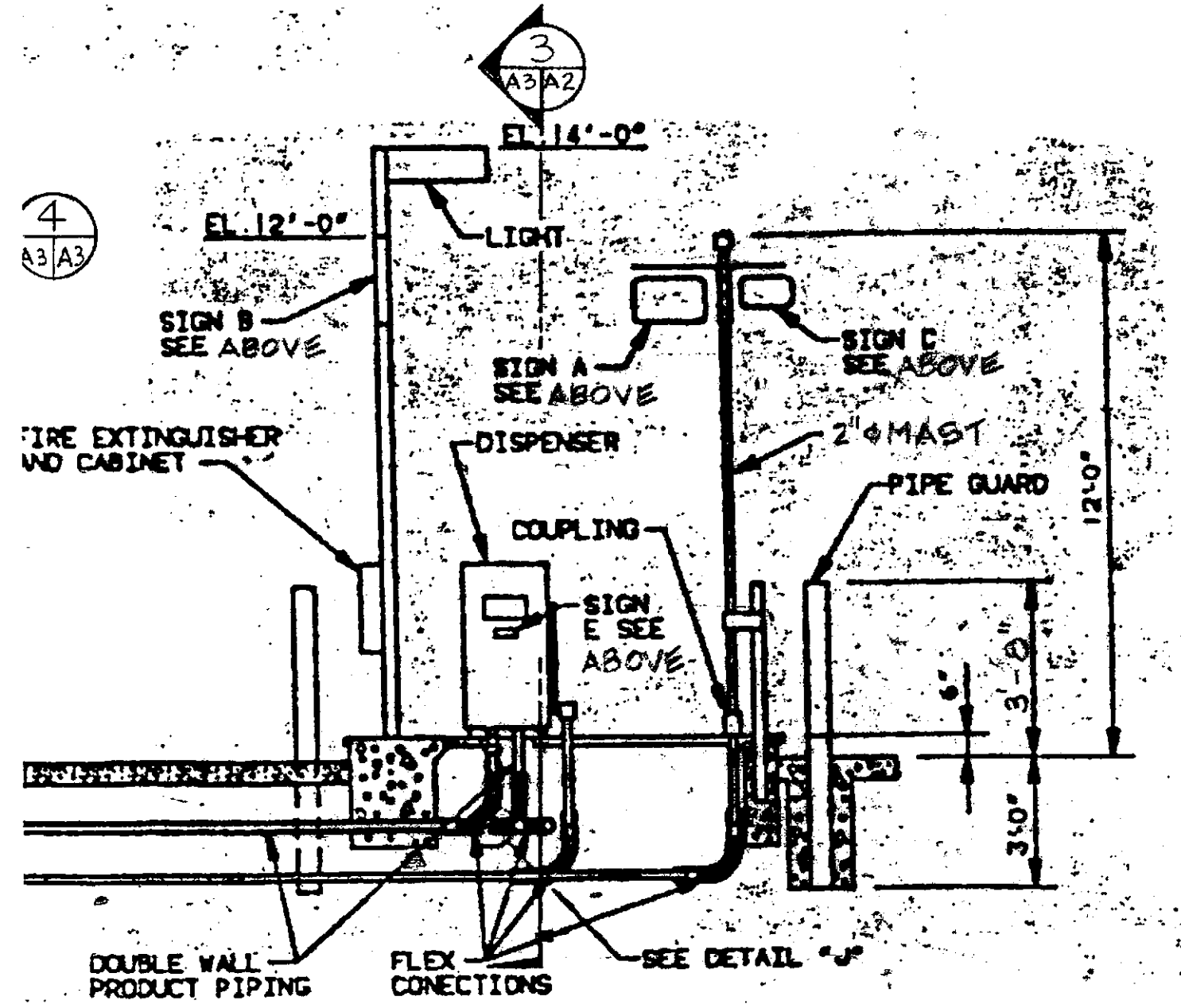
3 A3/A3

UNLEADED  
10K F 3-15-88

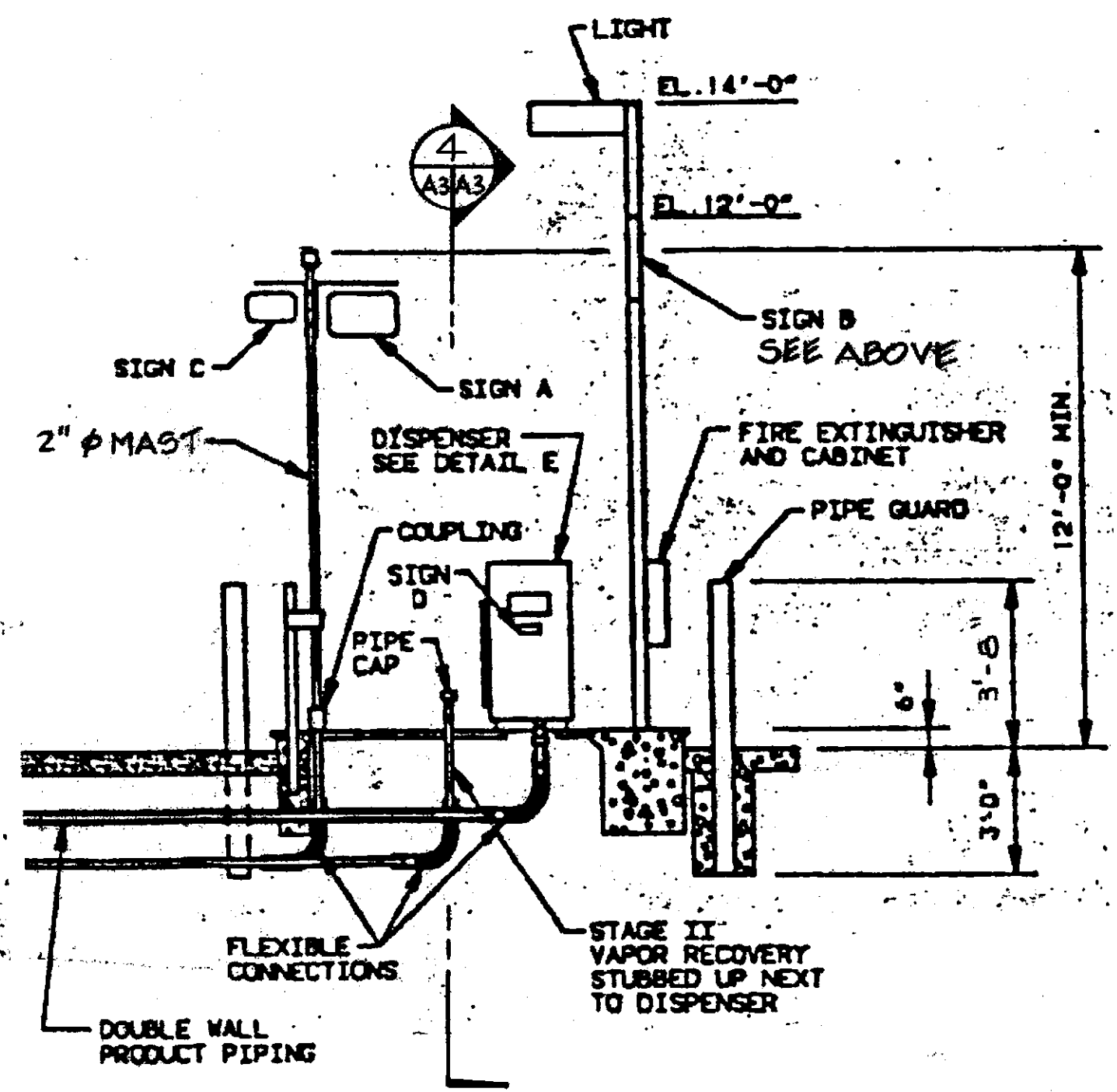
TANK SIZE & TYPE  
F-FIBERGLASS  
S-STEEL  
INSTALLATION DATE

STANDARD DETAILS

PLING  
CONDUITS  
ER  
SATOR (FUTURE, CAP AT ISLAND)  
RE (FUTURE CAP AT ISLAND  
SIDE OF DISPENSER)  
OP SPARES FROM ISLAND  
ISLAND BACK TO CONSOLE)



DIESEL ISLAND ELEVATION 2  
A3/A3



GASOLINE ISLAND ELEVATION 1  
A3/A3

OAKLAND CAR WASH RETROFIT  
UNITED PARCEL SERVICE  
8400 PARDEE STREET  
OAKLAND, CALIFORNIA 94621

NO.	DATE	REVISIONS
1	5/15/89	BIO DOCUMENTS

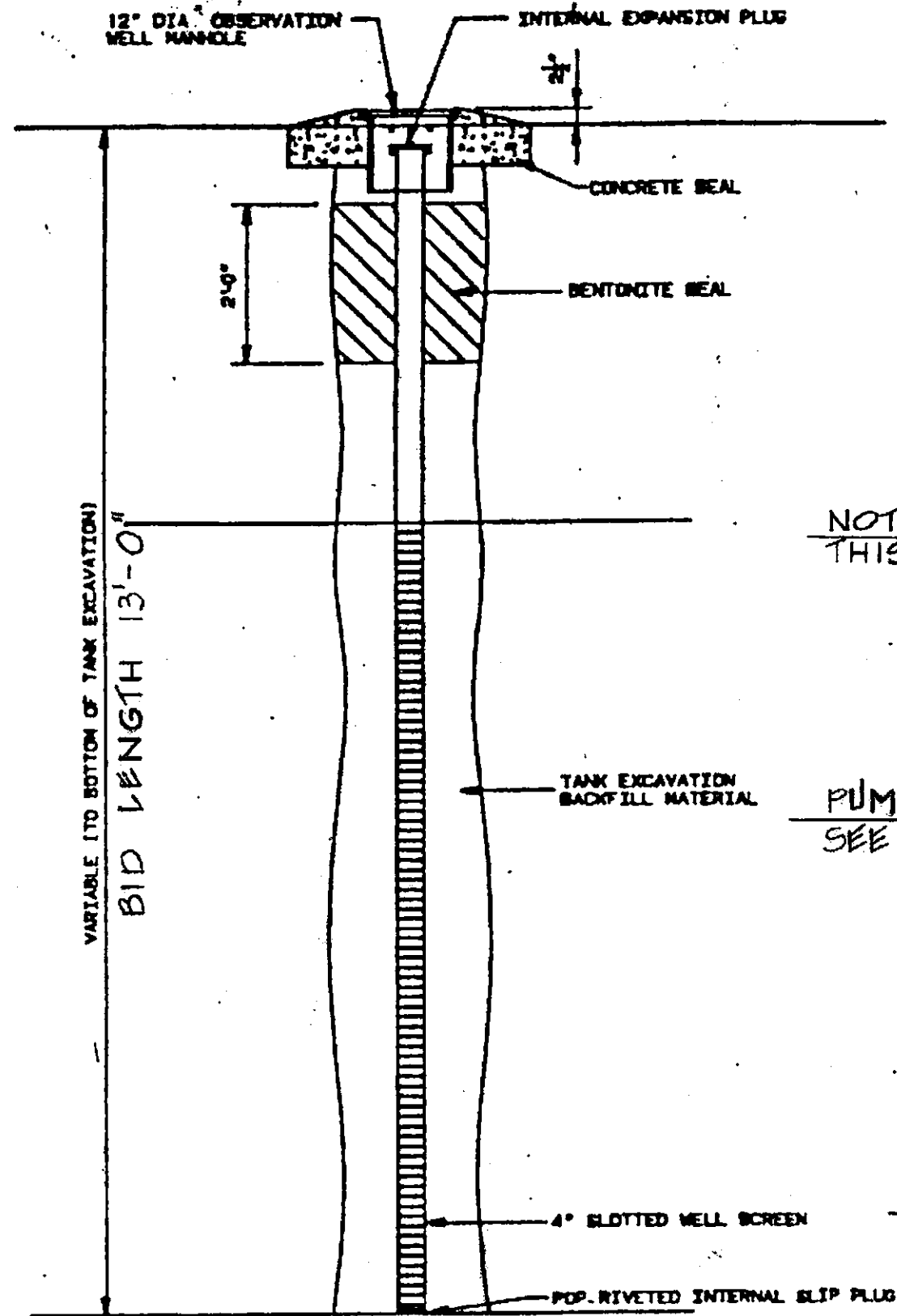
DATE ISSUED  
MAY 5, 1989

**A-3**  
OF SHEETS

JOB NUMBER  
7610

# OBSERVATION WELL DETAIL

GENERAL NOTE: SLOPE ALL



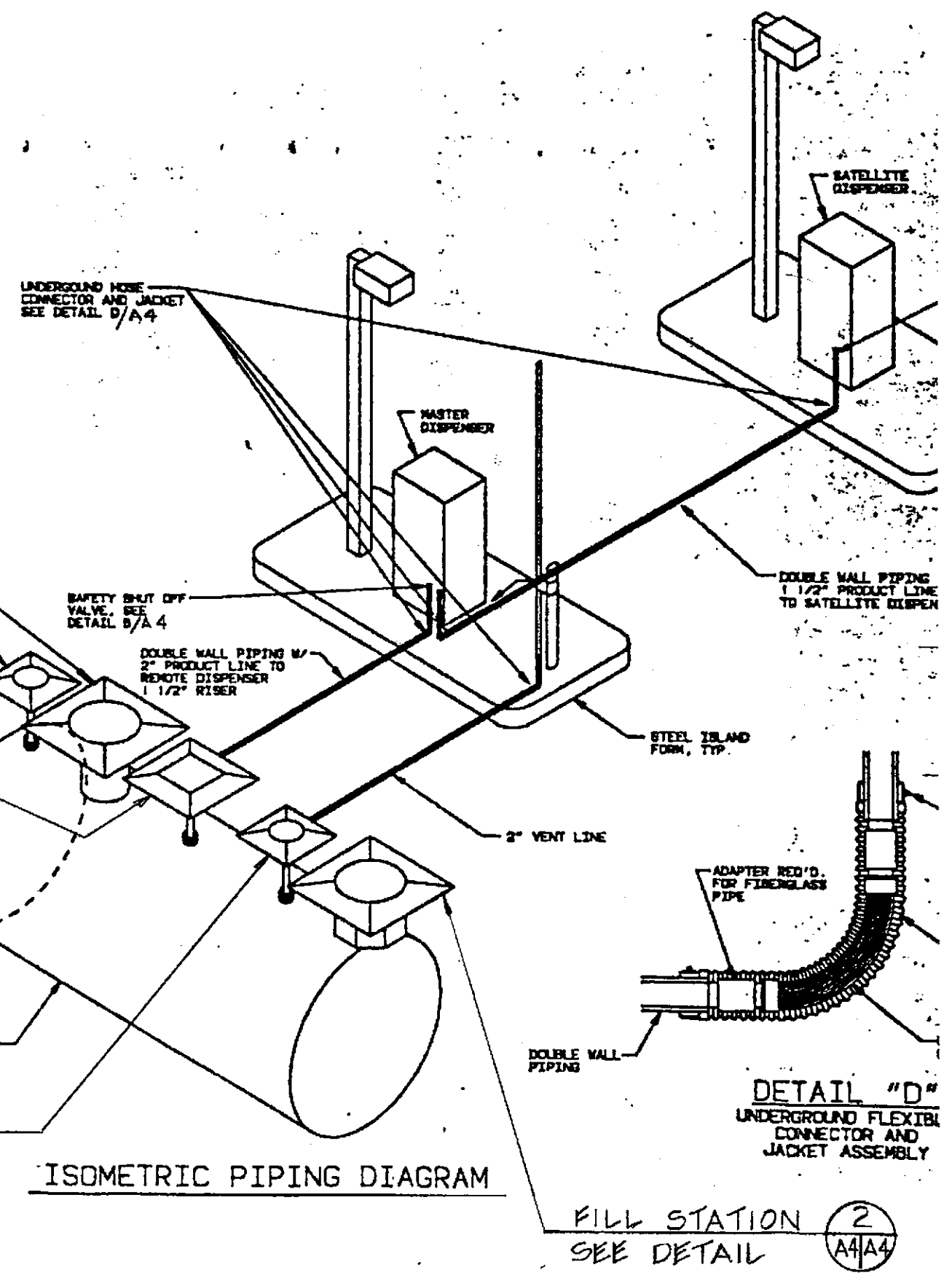
NOT USED ON THIS PROJECT

PUMP STATION  
 SEE DETAIL (3) A4/A4

VENT STATION  
 SEE DETAIL (2) A3/A3

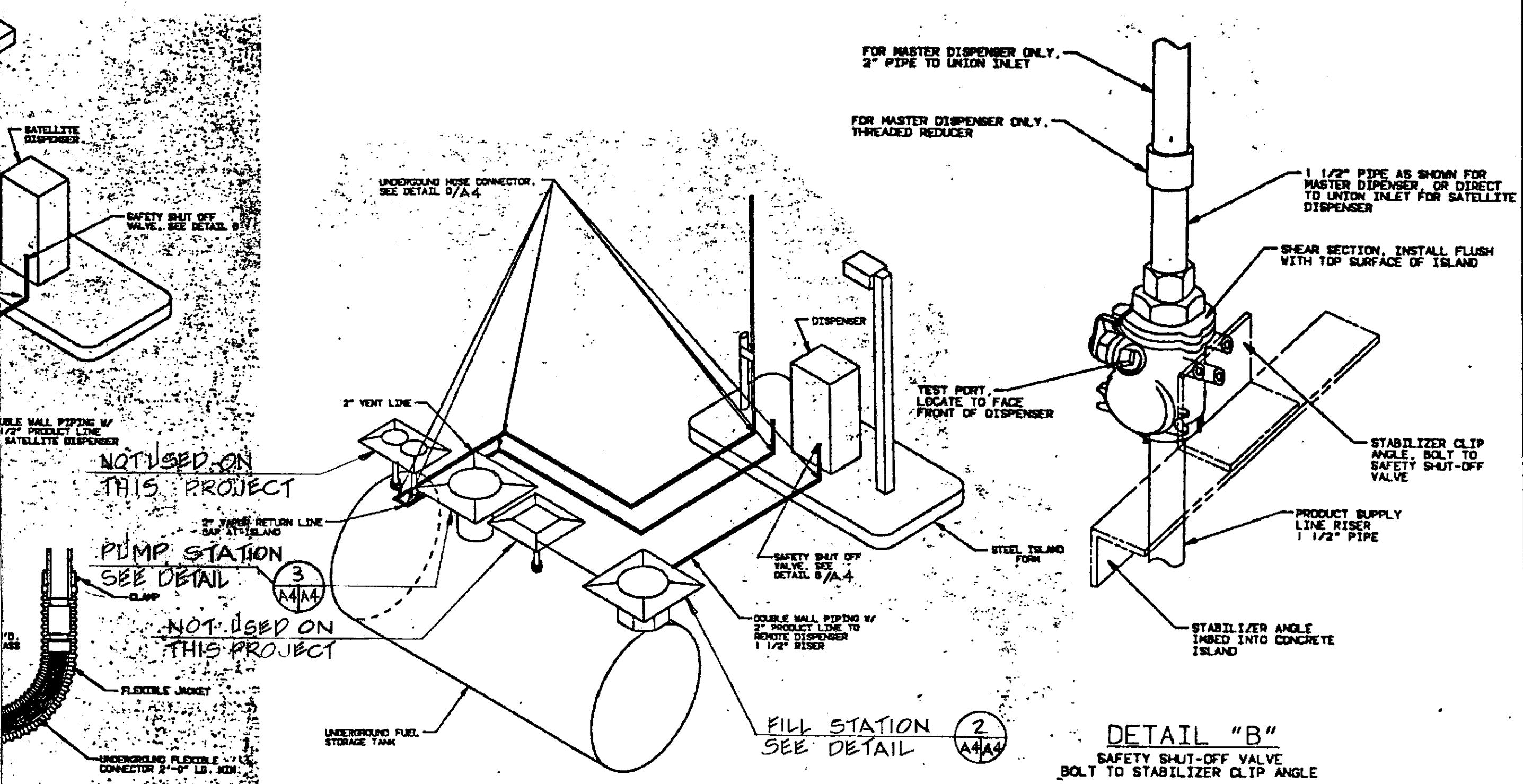
UNDERGROUND FUEL STORAGE TANK

ISOMETRIC PIPING DIAGRAM



NOTE: OBSERVATION WELL LOCATION TO BE WITHIN TANK EXCAVATION

ALL PIPES DOWN TO FUEL TANKS



ISOMETRIC PIPING DIAGRAM



W. B. CLAUSEN STRUCTURAL ENGINEER

780 WEST GRAND AVENUE  
OAKLAND, CALIFORNIA 94612  
TELEPHONE (415) 444-4144

DRAWN BY	CHECKED BY	ENGINEER & NO.

(2) A4/A4

(3) A4/A4

(2) A4/A4

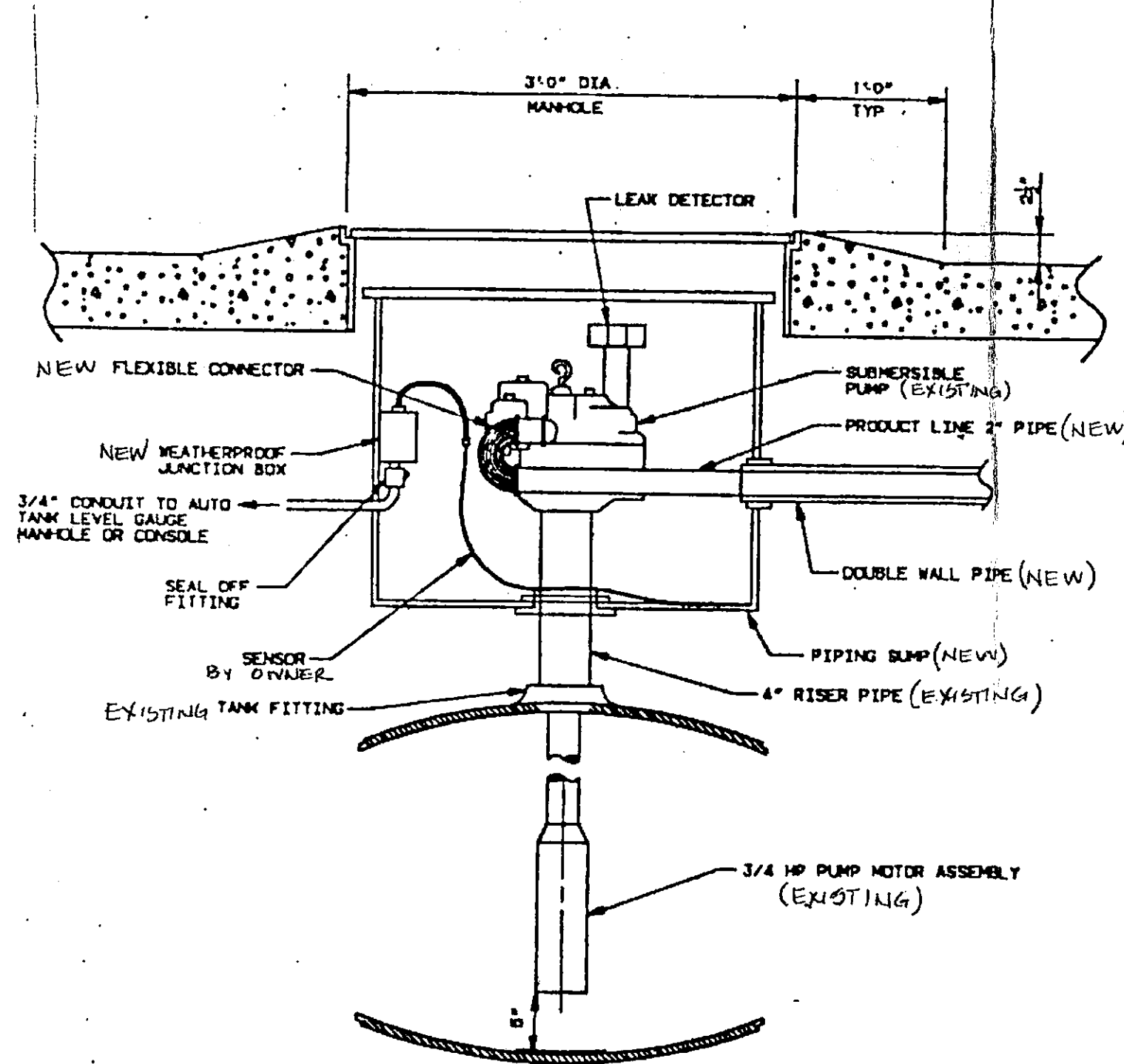
NOTE: OBSERVATION WELL LOCATION TO BE WITHIN TANK EXCAVATION

# OBSERVATION WELLS



FILL STATION (2)  
SEE DETAIL (A4|A4)

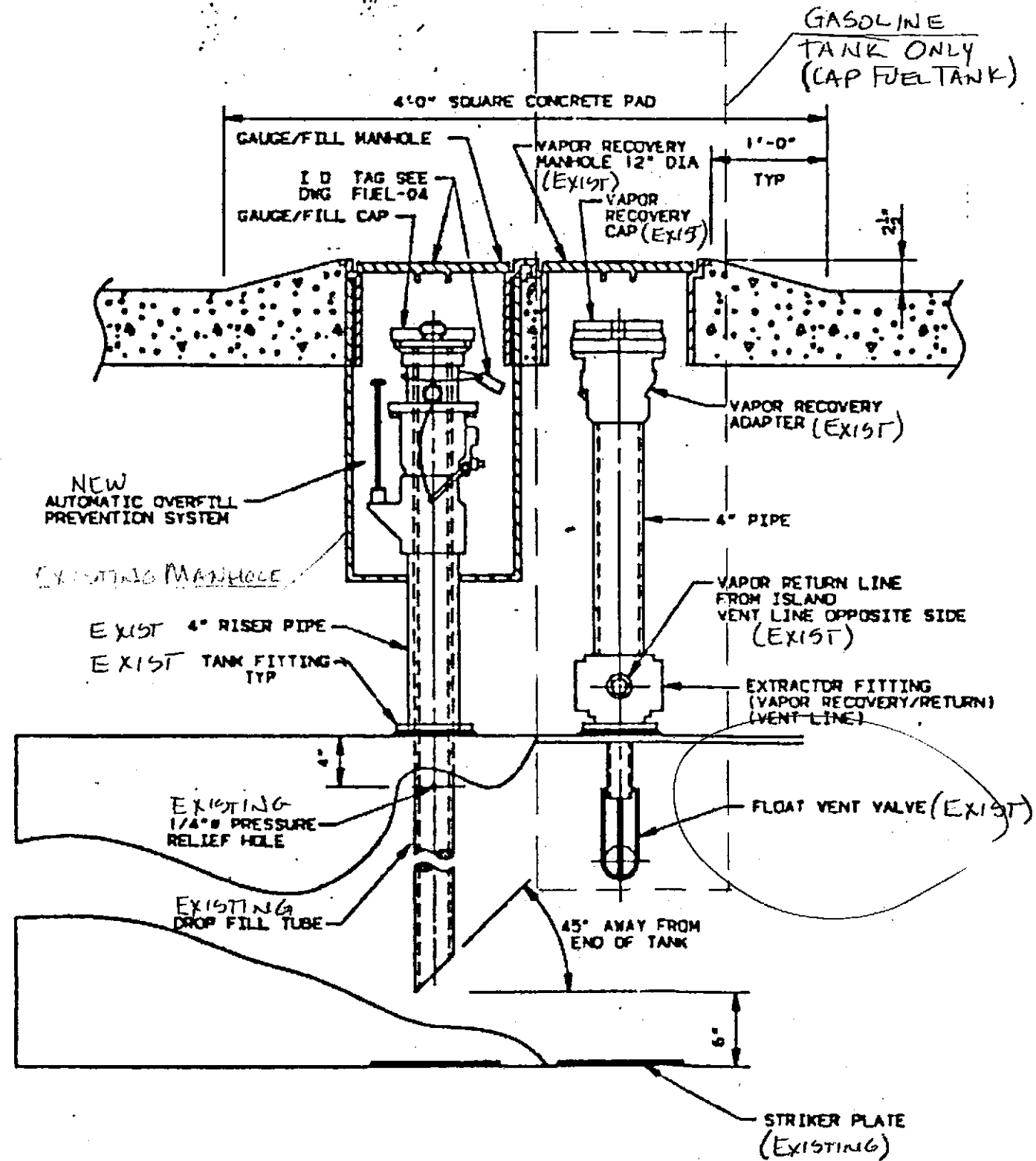
# DIESEL TANK DETAILS



# PUMP STATION



# GASOLINE TANK DETAILS

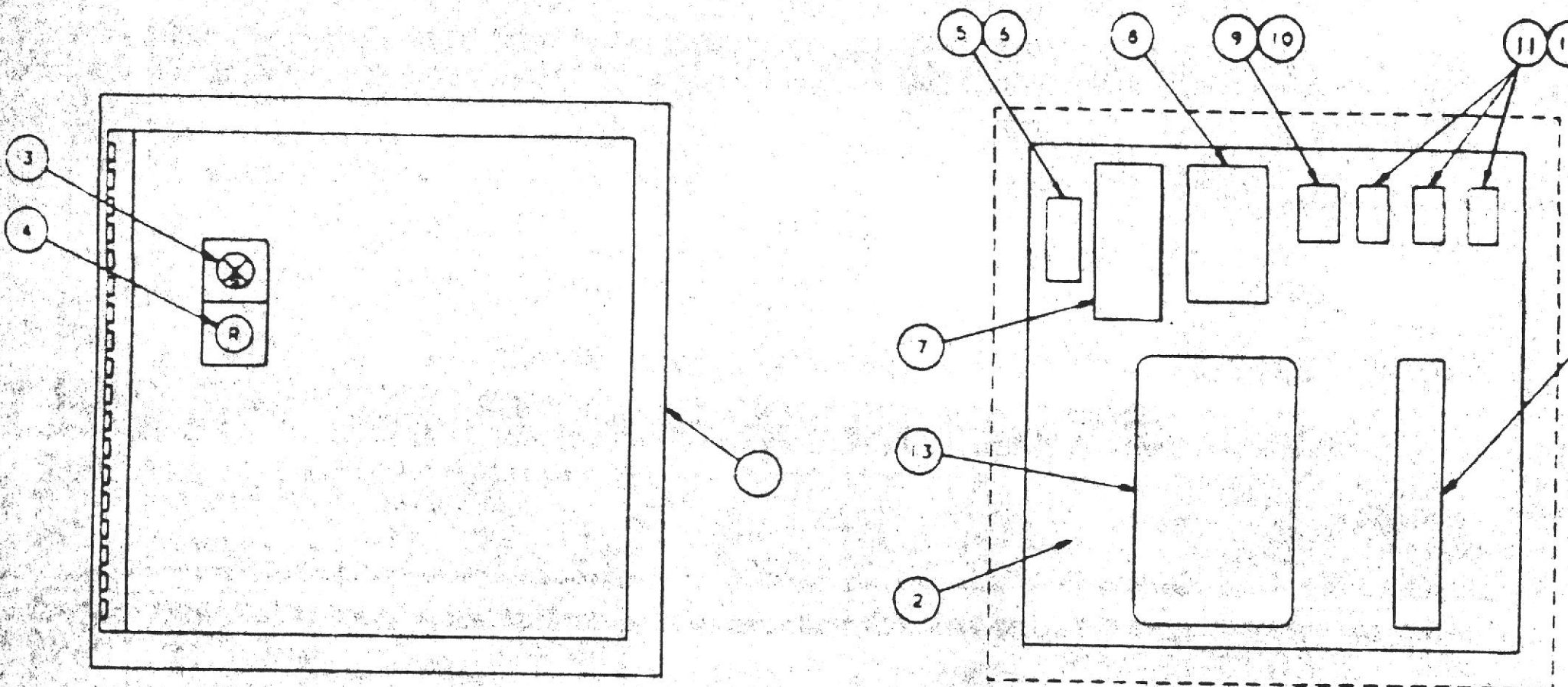
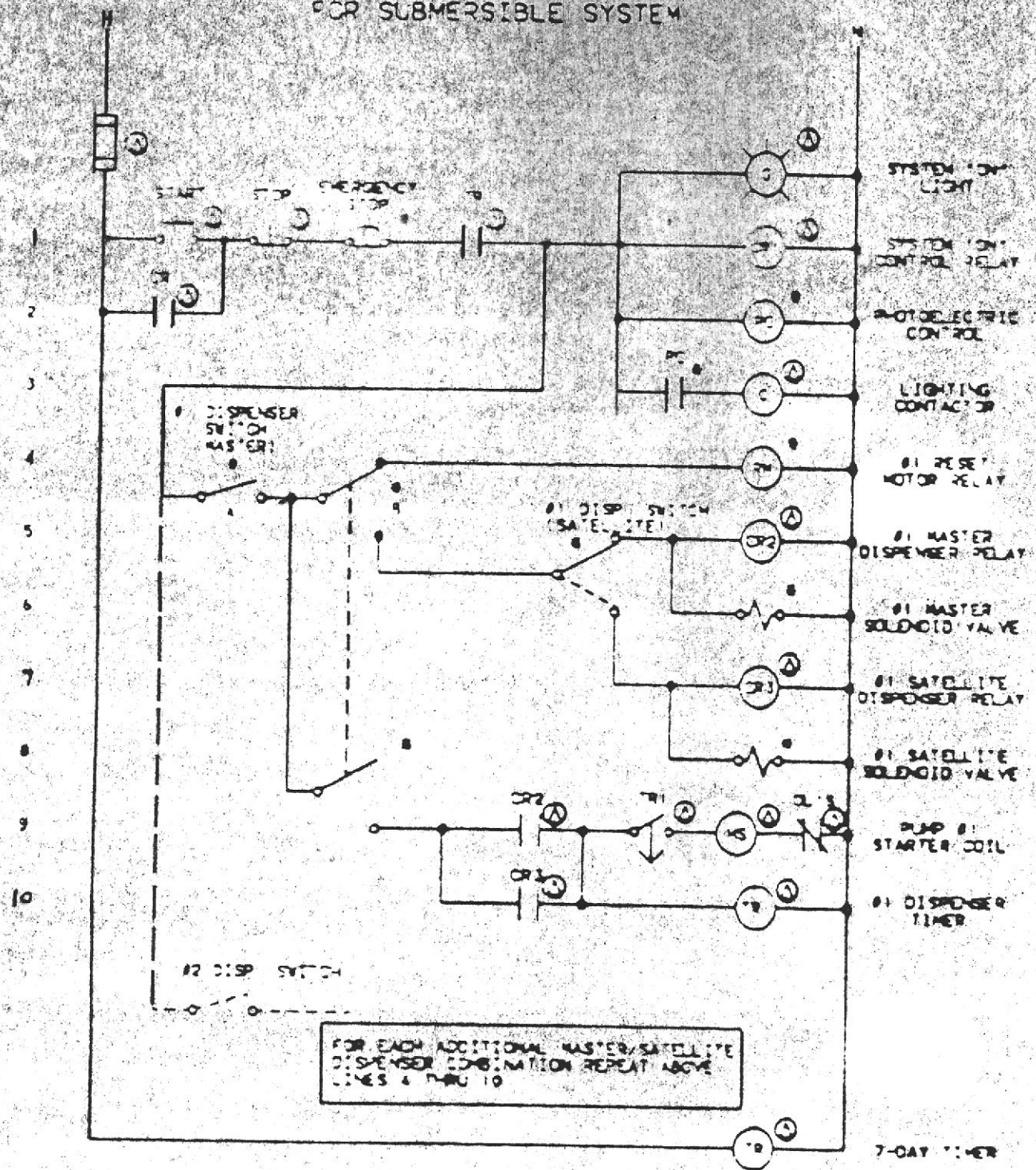


FILL STATION ②

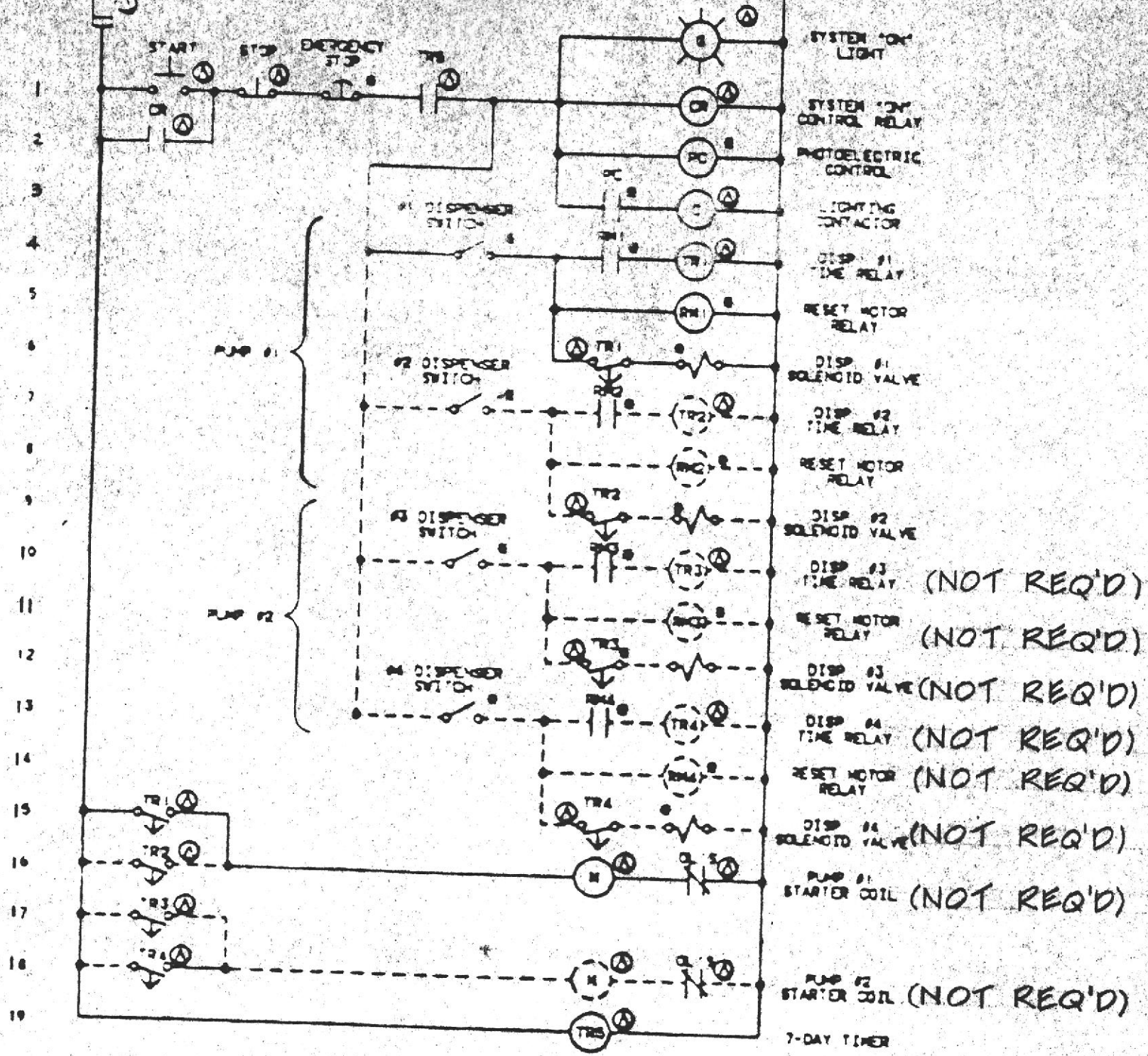
DRAY	CHECK	ENGINEER
OAKLAND CAR WASH RETROFIT UNITED PARCEL SERVICE 8400 PARDEE STREET OAKLAND, CALIFORNIA 94621		
NO.	DATE	REVISIONS
1	5/5/89	BIO DOCUMENTS
DATE ISSUED MAY 5, 1989		
A-4		
OF SHEETS		



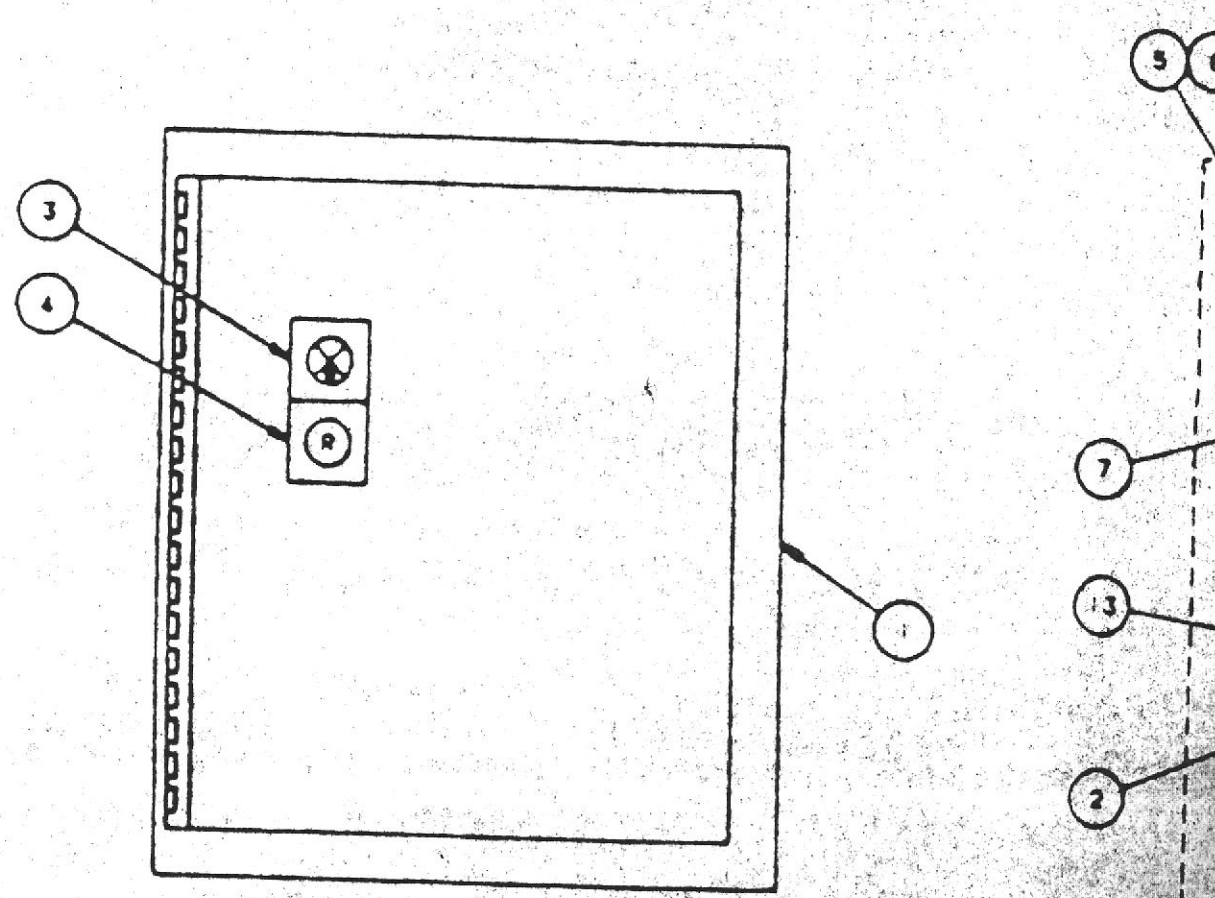
DIESEL ELECTRICAL DIAGRAM  
FOR SUBMERSIBLE SYSTEM

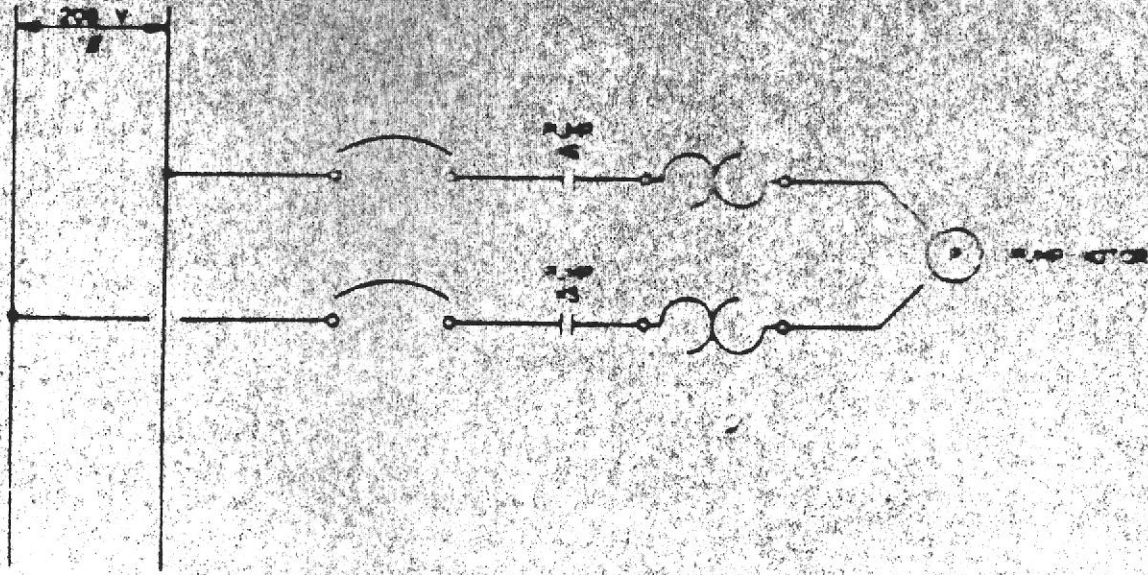
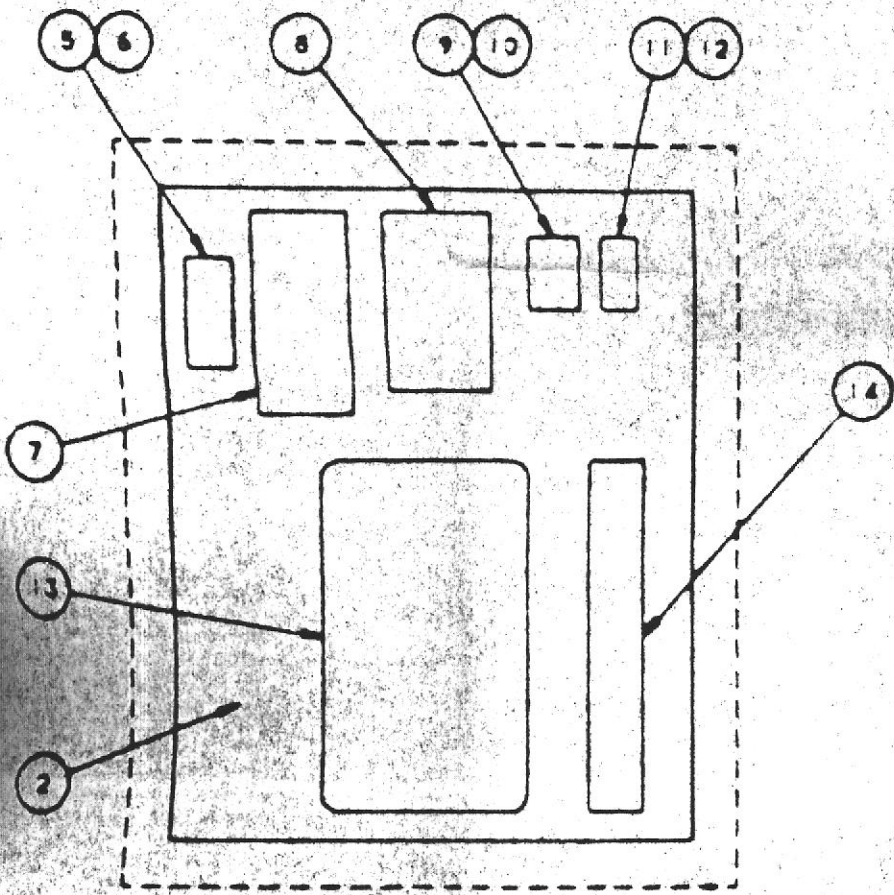


# GAS ELECTRICAL DIAGRAM FOR SUBMERSIBLE SYSTEM



SOLID LINES SHOW SCHEMATIC FOR 1 PUMP 1 DISPENSER  
 DOTTED LINES SHOW AN ADDITIONAL PUMP AND DISPENSERS  
 FOR USE WITH 2 PUMP OPERATION REPEAT ABOVE  
 SCHEMATIC FROM LINE 7 TO LINE 19





**POWER DIAGRAM**  
GASOLINE & DIESEL FUELING FACILITIES



W. B. CLAUSEN STRUCTURAL ENGINEER

780 WEST GRAND AVENUE  
OAKLAND, CALIFORNIA 94612  
TELEPHONE (415) 444-4144

AND CAR WASH RETROFIT  
D PARCEL SERVICE  
PARDEE STREET  
IND., CALIFORNIA 94621  
NG CONSOLES

DRAWN BY  
CHECKED BY  
ENGINEER & NO.

FRONT VIEW

SUB-PANEL LAYOUT

## DIESEL FUELING FACILITY CONSOLE

### LEGEND

- Ⓐ FUEL ISLAND CONTROL PANEL
- FIELD LOCATION

### NOTE:

1. SWITCH "3" IS MECHANICALLY INTERLOCKED WITH SWITCH "A". WHEN THE MASTER SELECTOR SWITCH "A" IS ENERGIZED, SWITCH "B" IS IN THE UPPER POSITION. WHEN THE RESET MOTOR RETURNS THE GALLONS DISPENSED COUNTER TO ZERO, SWITCH "B" DROPS TO THE LOWER POSITION ENERGIZING THE PUMP, TIMER AND SOLENOID VALVE.
2. AFFIX ENGRAVED PLASTIC LAMINATE TAG TO FACE OF CONSOLE MARKED "DIESEL CONSOLE" OR "GASOLINE CONSOLE" AS REQ'D
3. EMERGENCY STOP RESET IS TO BE FIELD LOCATED ON STRUCTURE NEAREST TO BUT NOT ON THE FUEL ISLAND(S) AND IS TO BE CLEARLY VISIBLE FROM FUEL ISLAND(S). EMERGENCY STOP RESET IS TO BE RED EXTENDED MUSH-ROOM HEAD BUTTON WITH 2 1/4" LEGEND PLATE MARKED "PULL TO RESET PUSH TO STOP" (MICROSWITCH)

FRONT VIEW

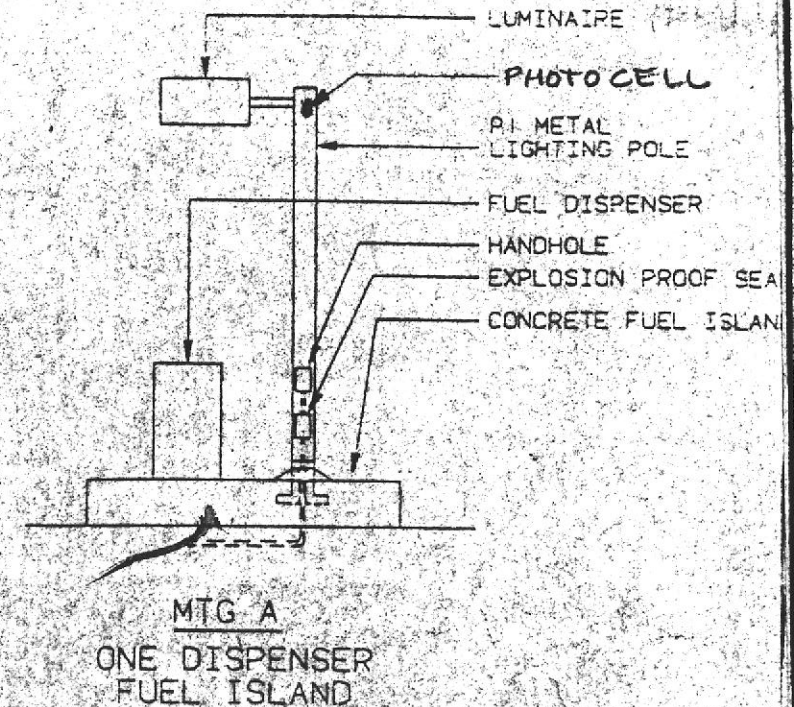
SUB-PANEL LAYOUT

SHOWN FOR 1 PUMP 1 DISPENSER  
MODIFY AS REQUIRED FOR MULTIPLES

GASOLINE FUELING FACILITY CONSOLE

**BILL OF MATERIALS**  
GASOLINE & DIESEL FUELING FACILITY

ITEM	DESCRIPTION	MANUFACTURER
1	NEMA TYPE 12 ENCLOSURE, SIZE AS REQ'D	HOFFMAN
2	SUB PANEL FOR ITEM 1	HOFFMAN
3	START PUSH BUTTON. MOMENTARY HEAVY DUTY OILTIGHT PUSH BUTTON. TO BE LIGHTED GREEN AND HAVE FULL GUARD, TYPE PTH AND 1 PTCB (1 N.O. - 1 N.C.) CONTACTS, WITH ALUMINIUM 2 1/4" LEGEND MARKED "START"	MICRO SWITCH
4	STOP PUSH BUTTON. TO BE SAME AS ITEM 3 EXCEPT WITH EXTENDED. RED. UNLIGHTED BUTTON AND LEGEND PLATE MARKED "STOP"	MICRO SWITCH
5	FUSE 5 AMP 120 VOLT	SHAWMUT
6	FUSE BLOCK, 30 AMP 120 VOLT	SHAWMUT
7	MAGNETIC STARTER. NEMA SIZE 0, OPEN TYPE. 208V. 2 POLE. SINGLE PHASE. 60 HZ. 120V COIL	ALLEN BRADLEY
8	LIGHTING CONTACTOR, OPEN TYPE, 120V COIL, 277V. 2 POLE, SIZE AS REQ'D	ALLEN BRADLEY
9	TIME DELAY RELAY, TIME OPEN, 120V, SOLID STATE, CG SERIES, INTERVAL ON, 8 PIN	POTTER & BRUNFIELD
10	SCREW TERMINAL SOCKET, 6 PIN, DGTAL TYPE	POTTER & BRUNFIELD
11	RELAY, 120 VAC, KH SERIES	POTTER & BRUNFIELD
12	SCREW TERMINAL SOCKET, 10A TYPE	POTTER & BRUNFIELD
13	7 DAY TIMER WITH 3 DAY SKIP AND CARRY OVER, SPOT SWITCH	INTERNATIC
14	TERMINAL STRIP	SQUARE D



OAKI  
UNITE  
8400  
OAKL  
FUELI

REVISIONS	DATE	NO.
1	5/15/89	810
DOCUMENTS		

DATE ISSUED  
**MAY 5, 1989**

**A-5**  
OF SHEETS

JOB NUMBER  
**7610**