



1680 ROGERS AVENUE  
SAN JOSE, CALIFORNIA 95112-1105  
(408) 573-7771 FAX  
(408) 573-0555 PHONE

March 30, 2000

Brett Hunter  
Chevron U.S.A. Products Company  
P.O. Box 6004  
San Ramon, CA 94583-0904

#### 4th Quarter 1999 Monitoring at 9-0121

Fourth Quarter 1999 Groundwater Monitoring at  
Chevron Service Station Number 9-0121  
3026 Lakeshore Avenue  
Oakland, CA

Monitoring Performed on December 20, 1999

---

#### Groundwater Sampling Report 991220-M-2

This report covers the routine monitoring of groundwater wells at this Chevron facility. Blaine Tech Services, Inc.'s work at the site includes inspection, gauging, evacuation, purgewater containment, sample collection and sample handling in accordance with standard procedures that conform to Regional Water Quality Control Board requirements.

Routine field data collection includes depth to water, total well depth, thickness of any separate immiscible layer, water column volume, calculated volume of a three-case volume purge, elapsed evacuation time, total volume of water removed, and standard water parameter instrument readings. Sample material is collected, contained, stored, and transported to the laboratory in conformance with EPA standards. Purgewater is, likewise, collected and transported to McKittrick Waste Treatment Site for disposal.

Basic field information is presented alongside analytical values excerpted from the laboratory report in the cumulative table of **WELL DATA AND ANALYTICAL RESULTS**. The full analytical report for the most recent samples is located in the **Analytical Appendix**. The table also contains new groundwater elevation calculations taken from the computer plotted gradient

At a minimum, Blaine Tech Services, Inc. field personnel are certified upon completion of a forty-hour Hazardous Materials and Emergency Response training course per 29 CFR 1910.120. Field personnel are also enrolled in annual eight hour refresher courses.

Blaine Tech Services, Inc. conducts sampling and documentation assignments of this type as an independent third party. In order to avoid compromising the objectivity necessary for the proper and disinterested performance of this work, Blaine Tech Services, Inc. concentrates on objective data collection and does not participate in the interpretation of analytical results, the definition of geological or hydrological conditions, the formulation of recommendations, or the marketing of remedial systems.

Please call if you have any questions.

Yours truly,



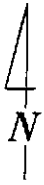
Scott Boor  
Project Coordinator

SDB/jh

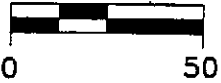
attachments: Professional Engineering Appendix  
Cumulative Table of Well Data and Analytical Results  
Analytical Appendix  
Field Data Sheets

cc: ~~Eva Chu, Alameda County Health Services~~  
Greg Gurss, Gettler-Ryan, Inc.  
Bill Scudder, Chevron (w/o enclosure)

# **Professional Engineering Appendix**

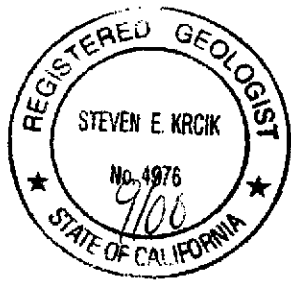
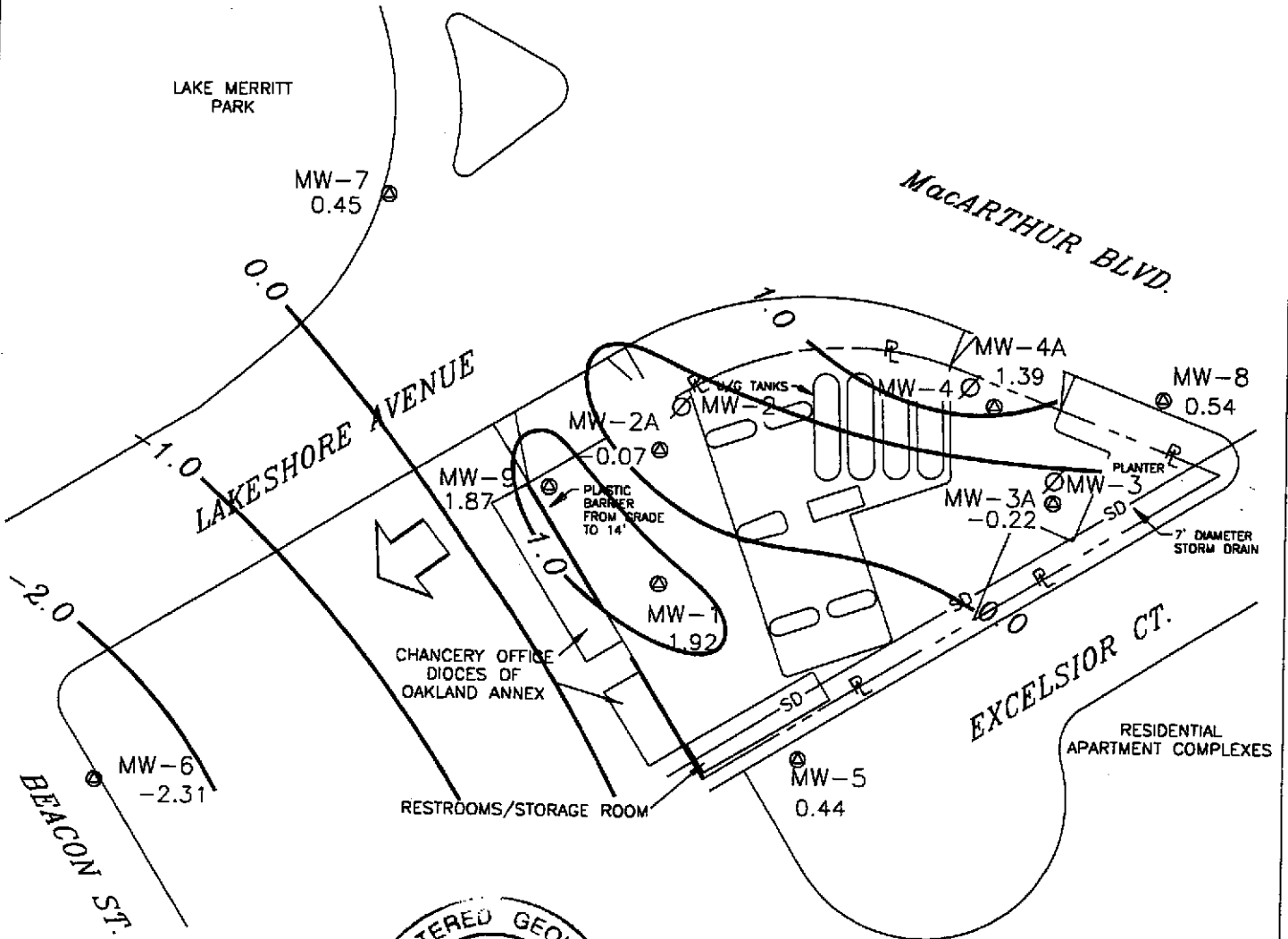


SCALE (ft)



EXPLANATION

- ⊙ MONITORING WELL LOCATION
- ∅ DESTROYED WELL LOCATION
- 1.39 GROUNDWATER ELEVATION (FT. MSL)
- 1.0 — GROUNDWATER ELEVATION CONTOUR (FT. MSL)
- ↙ APPROXIMATE GROUNDWATER FLOW DIRECTION;  
APPROXIMATE GRADIENT = 0.01



Basemap from Geoconsultants, Inc.

PREPARED BY

**RRM**  
engineering contracting firm

Chevron Station 9-0121  
3026 Lakeshore Avenue  
Oakland, California

GROUNDWATER ELEVATION CONTOUR MAP,  
DECEMBER 20, 1999

FIGURE:  
1

PROJECT:  
DAC04

**Table of  
Well Data and  
Analytical Results**

## Cumulative Table of Well Data and Analytical Results

Vertical Measurements are in feet.

Volumetric Measurements are in gallons.

Analytical results are in parts per billion (ppb)

DATE	Well Head Elev.	Ground Water Elev.	Depth To Water	SPH Thickness	SPH Removed	Total SPH Removed	Notes	TPH Gasoline	Benzene	Toluene	Ethyl-Benzene	Xylene	TPH-Diesel	TDS	MTBE
<b>MW-1</b>															
08/20/91	6.82	1.62	5.20	--	--	--	--	5100	1700	21	220	34	260	--	--
09/30/91	6.82	1.15	5.67	Sheen	--	--	--	--	--	--	--	--	--	--	--
10/28/91	6.82	1.50	5.30	0.03	--	--	--	--	--	--	--	--	--	--	--
01/08/92	6.82	1.67	5.15	Sheen	--	--	--	5400	770	13	95	31	4400	--	--
01/13/92	6.82	--	--	--	--	--	--	--	--	--	--	--	--	--	--
06/23/92	6.89	1.48	5.41	--	--	--	--	7700	1500	40	230	100	2000	--	--
08/24/92	6.89	1.12	5.77	--	--	--	--	--	--	--	--	--	--	--	--
09/21/92	6.89	1.00	5.89	--	--	--	--	3500	1700	28	190	78	<50	--	--
10/26/92	6.89	0.95	5.94	--	--	--	--	--	--	--	--	--	--	--	--
12/23/92	6.89	2.18	4.71	--	--	--	--	60,000	7100	240	2000	1300	5500	--	--
01/08/93	6.89	--	--	--	--	--	--	--	--	--	--	--	--	--	--
03/25/93	6.89	2.17	4.72	--	--	--	--	530	1100	41	67	79	<10	--	--
06/11/93	6.89	5.37	5.07	--	--	--	--	7000	1900	33	120	69	--	840	9600
09/29/93	6.89	1.13	5.76	--	--	--	--	6600	1600	28	43	74	<10	--	--
12/20/93	6.89	1.74	5.15	--	--	--	--	6300	1900	36	82	65	<10	--	--
03/07/94	6.89	2.21	4.68	--	--	--	--	7700	1100	55	66	38	<10	--	12,000
06/17/94	6.89	1.83	5.06	--	--	--	--	4300	710	12	90	38	2200	--	--
09/12/94	6.89	1.24	5.65	--	--	--	--	6400	1500	<25	180	<25	2500	--	12,000
11/30/94	6.89	2.32	4.57	--	--	--	--	4900	690	26	97	60	2300*	--	3900
03/24/95	6.89	3.91	2.98	--	--	--	--	1800	160	7.3	11	14	1400**	--	1300
06/27/95	6.89	1.87	5.02	--	--	--	--	4600	1300	11	97	13	2300**	--	5100
09/28/95	6.89	1.59	5.30	--	--	--	--	6600	1500	<20	<20	<20	3900**	--	5800
12/19/95	6.89	2.21	4.68	--	--	--	--	3800	930	<10	100	<10	2600**	--	6300
02/28/96	6.89	3.27	3.62	--	--	--	--	3600	280	<5.0	18	5.5	1800**	--	2200
06/25/96	6.89	1.87	5.02	--	--	--	--	4700	1600	36	150	31	3000	--	3000
12/17/96	6.89	2.23	4.66	--	--	--	--	7800	1000	28	340	63	2700***	--	1200
03/31/97	6.89	2.01	4.88	--	--	--	--	5300	590	55	210	53	2200**	--	950
06/30/97	6.89	1.32	5.57	--	--	--	--	4400	350	<10	<10	11	2200**	--	580
09/12/97	6.89	1.56	5.33	--	--	--	--	3400	220	9.5	15	11	2300**	--	460
12/05/97	6.89	2.44	4.45	--	--	--	--	4700	870	21	120	18	1900**	--	750
02/16/98	6.89	3.52	3.37	--	--	--	--	4400	120	12	11	7.7	1600**	--	270
06/17/98	6.89	2.24	4.65	--	--	--	--	7800	<25	50	34	650	1300**	--	650
08/31/98	6.89	1.70	5.19	--	--	--	--	3700	620	17	120	31	2400**	--	380
12/28/98	6.89	1.94	4.95	--	--	--	+	3800	250	14	28	15	1500**	--	330

CONTINUED ON NEXT PAGE

\* Chromatogram pattern indicates a non-diesel mix.

\*\* Chromatogram pattern indicates an unidentified hydrocarbon.

\*\*\* Chromatogram pattern indicates an unidentified hydrocarbon and weathered diesel.

+ See Table of Additional Analyses.

## Cumulative Table of Well Data and Analytical Results

Vertical Measurements are in feet.			Volumetric Measurements are in gallons.					Analytical results are in parts per billion (ppb)							
DATE	Well Head Elev.	Ground Water Elev.	Depth To Water	SPH Thickness	SPH Removed	Total SPH Removed	Notes	TPH-Gasoline	Benzene	Toluene	Ethyl-Benzene	Xylene	TPH-Diesel	TDS	MTBE
<b>MW-1 (CONT'D)</b>															
03/04/99	6.89	3.24	3.65	--	--	--	--	1560	17.9	<0.5	4.17	1.05	1070**	--	70.4
06/14/99	6.89	1.89	5.00	--	--	--	--	<10,000	820	240	320	640	2500**	--	<500
09/17/99	6.89	0.30	6.59	--	--	--	--	3300	141	12.3	<10	<10	2110**	--	238
12/20/99	6.89	1.92	4.97	--	--	--	--	2990	218	16.3	20	<10	1840**	--	232

\*\* Chromatogram pattern indicates an unidentified hydrocarbon.

### Cumulative Table of Well Data and Analytical Results

Vertical Measurements are in feet.

Volumetric Measurements are in gallons.

Analytical results are in parts per billion (ppb)

DATE	Well Head Elev.	Ground Water Elev.	Depth To Water	SPH Thickness	SPH Removed	Total SPH Removed	Notes	TPH-Gasoline	Benzene	Toluene	Ethyl-Benzene	Xylene	TPH-Diesel	TDS	MTBE
<b>MW-2</b>															
08/20/91	6.27	1.92	4.35	--	--	--	--	9300	3700	55	530	75	600	--	--
09/30/91	6.27	1.28	4.99	--	--	--	--	3500	2600	47	440	68	--	--	--
10/28/91	6.27	1.36	4.91	--	--	--	--	4600	1800	29	290	53	--	--	--
01/08/92	6.27	1.63	4.64	Sheen	--	--	--	14,000	4300	70	<25	130	--	--	--
01/13/92	6.27	--	--	--	--	--	--	--	--	--	--	--	38,000	--	--
06/23/92	6.27	1.63	4.64	0.02	--	--	--	--	--	--	--	--	--	--	--
08/24/92	6.27	1.34	4.94	0.02	--	--	--	--	--	--	--	--	--	--	--
09/21/92	6.27	1.20	5.08	0.01	--	--	--	--	--	--	--	--	--	--	--
10/26/92	6.27	0.34	5.93	--	--	--	--	--	--	--	--	--	--	--	--
12/23/92	6.27	--	--	--	--	--	--	21,000	5400	59	1300	160	160,000	--	--
01/08/93	6.27	2.57	3.70	--	--	--	--	--	--	--	--	--	--	--	--
03/25/93	6.27	2.89	3.38	Sheen	--	--	--	--	--	--	--	--	--	--	--
06/11/93	6.27	2.09	4.18	--	--	--	--	5900	1100	23	240	51	--	2300	--
09/29/93	6.27	0.07	6.20	--	--	--	--	--	--	--	--	--	--	--	--
12/20/93	6.27	1.94	4.35	0.02	--	--	--	--	--	--	--	--	--	--	--
03/07/94	6.27	2.60	3.67	--	--	--	--	26,000	5700	170	1000	150	<10	--	--
06/17/94	6.27	2.25	4.02	Sheen	--	--	--	--	--	--	--	--	--	--	--
09/12/94	6.27	1.45	4.83	0.01	--	--	--	--	--	--	--	--	--	--	--
11/30/94	6.27	2.27	4.00	--	--	--	Inaccessible	--	--	--	--	--	--	--	--
03/24/95	6.27	2.73	4.01	0.59	--	--	--	--	--	--	--	--	--	--	--
06/27/95	6.27	1.71	4.96	0.50	0.013	0.013	--	--	--	--	--	--	--	--	--
09/28/95	6.27	2.62	4.25	0.75	0.013	0.026	--	--	--	--	--	--	--	--	--
12/19/95	6.27	1.99	4.76	0.60	0.010	0.036	--	--	--	--	--	--	--	--	--
02/28/96	6.27	1.99	4.58	0.38	0.008	0.044	--	--	--	--	--	--	--	--	--
06/25/96	6.27	2.36	4.29	0.47	0.030	0.074	--	--	--	--	--	--	--	--	--
12/17/96	6.27	2.22	4.16	0.14	--	0.074	--	--	--	--	--	--	--	--	--
03/31/97	6.27	2.34	4.07	0.18	0.030	0.104	--	--	--	--	--	--	--	--	--
06/30/97	6.27	2.06	4.32	0.14	0.030	0.134	--	--	--	--	--	--	--	--	--
09/12/97	6.27	2.00	4.38	0.14	--	0.134	--	--	--	--	--	--	--	--	--
12/05/97	6.27	2.51	3.78	0.02	--	0.134	--	--	--	--	--	--	--	--	--
02/16/98	6.27	3.08	3.29	0.12	0.007	0.141	--	--	--	--	--	--	--	--	--
06/17/98	6.27	2.35	4.00	0.10	0.010	0.151	--	--	--	--	--	--	--	--	--
08/31/98	6.27	0.65	5.71	0.11	0.008	0.159	--	--	--	--	--	--	--	--	--
12/28/98	6.27	1.75	4.60	0.10	0.005	0.164	--	--	--	--	--	--	--	--	--
03/04/99	6.27	2.58	3.73	0.05	0.200	0.364	--	--	--	--	--	--	--	--	--

NO LONGER MONITORED OR SAMPLED



## Cumulative Table of Well Data and Analytical Results

Vertical Measurements are in feet.

Volumetric Measurements are in gallons.

Analytical results are in parts per billion (ppb)

DATE	Vertical Measurements are in feet.			Volumetric Measurements are in gallons.				Analytical results are in parts per billion (ppb)							
	Well Head Elev.	Ground Water Elev.	Depth To Water	SPH Thickness	SPH Removed	Total SPH Removed	Notes	TPH-Gasoline	Benzene	Toluene	Ethyl-Benzene	Xylene	TPH-Diesel	TDS	MTBE
<b>MW-2A</b>															
04/19/99	6.53	1.67	4.86	--	--	--	--	<2000	<20	<20	<20	<20	820*	--	9200
06/14/99	6.53	1.23	5.30	--	--	--	--	<5000	89	<50	66	<50	2000*	--	10,000
09/17/99	6.53	0.69	5.84	--	--	--	--	903	42	1.63	22.8	7.74	1050*	--	11,400
12/20/99	6.53	-0.07	6.60	--	--	--	--	2280	115	<10	87.2	27.2	2820*	--	14,000

\* Chromatogram pattern indicates an unidentified hydrocarbon.

## Cumulative Table of Well Data and Analytical Results

Vertical Measurements are in feet.			Volumetric Measurements are in gallons.				Analytical results are in parts per billion (ppb)								
DATE	Well Head Elev.	Ground Water Elev.	Depth To Water	SPH Thickness	SPH Removed	Total SPH Removed	Notes	TPH-Gasoline	Benzene	Toluene	Ethyl-Benzene	Xylene	TPH-Diesel	TDS	MTBE
<b>MW-3</b>															
08/20/91	8.71	0.26	8.45	--	--	--	--	3100	200	13	15	12	200	--	--
09/30/91	8.71	-0.03	8.74	--	--	--	--	1000	150	8.3	13	6.7	--	--	--
10/28/91	8.71	-0.05	8.76	--	--	--	--	1200	120	6.7	11	7.5	--	--	--
01/08/92	8.71	-0.06	8.77	--	--	--	--	410	120	0.9	4.1	3.4	--	--	--
01/13/92	8.71	--	--	--	--	--	--	--	--	--	--	--	220	--	--
06/23/92	8.71	0.03	8.68	--	--	--	--	630	43	0.8	8.2	3.4	<50	--	--
08/24/92	8.71	-0.14	8.85	--	--	--	--	--	--	--	--	--	--	--	--
09/21/92	8.71	-0.23	8.94	--	--	--	--	1800	730	1.4	66	39	<50	--	--
10/26/92	8.71	-0.36	9.07	--	--	--	--	--	--	--	--	--	--	--	--
12/23/92	8.71	--	--	--	--	--	--	840	270	3.4	15	4.2	850	--	--
01/08/93	8.71	1.02	7.69	--	--	--	--	--	--	--	--	--	--	--	--
03/25/93	8.71	0.97	7.74	--	--	--	--	760	270	4.0	10	5.0	<10	--	--
06/11/93	8.71	0.19	8.52	--	--	--	--	200	32	1.0	5.0	2.0	--	5600	--
09/29/93	8.71	2.66	6.05	--	--	--	--	9300	2800	60	270	62	--	--	--
12/20/93	8.71	-0.12	8.83	--	--	--	--	460	250	4.0	8.0	4.0	<10	--	--
03/07/94	8.71	0.64	8.07	--	--	--	--	2400	260	13	35	18	<10	--	--
06/17/94	8.71	0.19	8.52	--	--	--	--	1000	200	4.0	6.6	6.7	<50	--	--
09/12/94	8.71	-0.21	8.92	--	--	--	--	360	130	3.4	4.8	3.3	<50	--	130
11/30/94	8.71	0.58	8.13	--	--	--	Inaccessible	--	--	--	--	--	--	--	--
03/24/95	8.71	1.93	6.78	--	--	--	--	4100	920	<10	23	<10	1200*	--	70
06/27/95	8.71	0.49	8.22	--	--	--	--	3100	640	16	31	<10	1000*	--	<50
09/28/95	8.71	-0.14	8.85	--	--	--	--	490	78	3.4	4.4	2.4	460*	--	38
12/19/95	8.71	0.69	8.02	--	--	--	--	2600	580	<10	25	<10	650*	--	<50
02/28/96	8.71	1.16	7.55	--	--	--	--	1500	510	<5.0	9.9	<5.0	780*	--	<25
06/25/96	8.71	0.34	8.37	--	--	--	--	1300	390	7.8	14	6.5	1200*	--	31
12/17/96	8.71	0.41	8.30	--	--	--	--	760	85	<1.2	5.9	5.1	1100*	--	<6.2
03/31/97	8.71	0.52	8.19	--	--	--	--	2000	380	12	24	12	1300*	--	<25
06/30/97	8.71	0.00	8.71	--	--	--	--	1900	340	9.9	23	6.1	620*	--	<25
09/12/97	8.71	1.07	7.64	--	--	--	--	1200	200	4.6	14	4.8	400*	--	3.9
12/05/97	8.71	0.46	8.25	--	--	--	--	460	72	2.7	5.2	1.7	190*	--	<5.0
02/16/98	8.71	1.71	7.00	--	--	--	--	6200	1100	20	34	12	1000*	--	<50
06/17/98	8.71	0.71	8.00	--	--	--	--	3000	350	<10	<10	<10	1100*	--	120
08/31/98	8.71	0.08	8.63	--	--	--	--	430	100	2.6	8.6	6.0	790*	--	<12
12/28/98	8.71	-0.02	8.73	--	--	--	+	1400	220	<10	12	<10	180*	--	<50
03/04/99	8.71	1.06	7.65	--	--	--	--	2880	355	9.15	19	<5.0	763*	--	<20

NO LONGER MONITORED OR SAMPLED

\* Chromatogram pattern indicates an unidentified hydrocarbon.

+ See Additional Analyses.

## Cumulative Table of Well Data and Analytical Results

Vertical Measurements are in feet.

Volumetric Measurements are in gallons.

Analytical results are in parts per billion (ppb)

DATE	Vertical Measurements are in feet.			Volumetric Measurements are in gallons.				Analytical results are in parts per billion (ppb)							
	Well Head Elev.	Ground Water Elev.	Depth To Water	SPH Thickness	SPH Removed	Total SPH Removed	Notes	TPH-Gasoline	Benzene	Toluene	Ethyl-Benzene	Xylene	TPH-Diesel	TDS	MTBE
<b>MW-3A</b>															
04/19/99	8.70	1.00	7.70	--	--	--	--	<50	<0.5	<0.5	<0.5	<0.5	93*	--	3.1
06/14/99	8.70	0.50	8.20	--	--	--	--	148	4.55	0.82	0.53	1.1	160*	--	3.7
09/17/99	8.70	-0.02	8.72	--	--	--	--	169	6.02	0.806	0.515	0.786	101*	--	4.68
12/20/99	8.70	-0.22	8.92	--	--	--	--	<50	1.82	<0.5	<0.5	<0.5	153*	--	11

\* Chromatogram pattern indicates an unidentified hydrocarbon.

## Cumulative Table of Well Data and Analytical Results

Vertical Measurements are in feet.

Volumetric Measurements are in gallons.

Analytical results are in parts per billion (ppb)

DATE	Well Head Elev.	Ground Water Elev.	Depth To Water	SPH Thickness	SPH Removed	Total SPH Removed	Notes	TPH-Gasoline	Benzene	Toluene	Ethyl-Benzene	Xylene	TPH-Diesel	TDS	MTBE
<b>MW-4</b>															
08/20/91	7.37	1.32	5.05	--	--	--	--	1800	870	4.0	3.0	9.0	160	--	--
09/30/91	7.37	1.70	5.67	--	--	--	--	670	830	5.5	2.7	12	--	--	--
10/28/91	7.37	1.56	5.81	--	--	--	--	2800	990	5.8	4.8	19	--	--	--
01/08/92	7.37	2.03	5.34	--	--	--	--	2900	1200	10	7.0	18	--	--	--
01/13/92	7.37	--	--	--	--	--	--	--	--	--	--	--	1000	--	--
06/23/92	7.37	2.00	5.37	--	--	--	--	1600	380	6.5	3.0	12	<50	--	--
08/24/92	7.37	1.62	5.75	--	--	--	--	--	--	--	--	--	--	--	--
09/21/92	7.37	1.42	5.95	--	--	--	--	1200	480	5.6	3.7	11	<50	--	--
10/26/92	7.37	1.41	5.96	--	--	--	--	--	--	--	--	--	--	--	--
12/23/92	7.37	--	--	--	--	--	--	1500	700	3.6	3.2	11	1800	--	--
01/08/93	7.37	2.73	4.64	--	--	--	--	--	--	--	--	--	--	--	--
03/25/93	7.37	2.95	4.42	--	--	--	--	520	160	3.0	1.0	4.0	<10	--	--
06/11/93	7.37	2.25	5.12	--	--	--	--	1200	430	5.0	6.0	11	--	2600	--
09/29/93	7.37	1.57	5.80	--	--	--	--	1300	210	8.0	2.0	14	--	--	--
12/20/93	7.37	2.27	5.10	--	--	--	--	570	230	5.0	4.0	8.0	3900	--	--
03/07/94	7.37	2.36	5.01	--	--	--	--	2200	290	18	2.5	11	2600	--	22,000
06/17/94	7.37	1.55	5.82	--	--	--	--	2100	480	11	4.3	9.5	2800	--	--
09/12/94	7.37	1.73	5.64	--	--	--	--	1700	340	6.1	2.7	9.7	3000	--	63,000
11/30/94	7.37	1.79	5.58	--	--	--	Inaccessible	--	--	--	--	--	--	--	--
03/24/95	7.37	2.42	4.95	--	--	--	--	1500	280	<5.0	<5.0	6.9	3000*	--	12,000
06/27/95	7.37	-1.42	8.79	--	--	--	--	<10,000	310	<100	<100	<100	3100*	--	32,000
09/28/95	7.37	1.52	5.85	--	--	--	--	330	64	1.1	<0.5	<0.5	6300*	--	630
12/19/95	7.37	1.87	5.50	--	--	--	--	3000	520	<25	<25	<25	3400*	--	44,000
02/28/96	7.37	2.27	5.10	--	--	--	--	<10,000	230	<100	<100	<100	4700*	--	32,000
06/25/96	7.37	1.59	5.78	--	--	--	--	<10,000	160	<100	<100	<100	3100	--	31,000
12/17/96	7.37	1.42	5.95	--	--	--	--	<5000	110	<50	<50	<50	3600**	--	22,000
03/31/97	7.37	1.75	5.62	--	--	--	--	<2500	130	<25	<25	<25	2700*	--	16,000
06/30/97	7.37	1.34	6.03	--	--	--	--	<2500	130	<25	<25	<25	2700*	--	14,000
09/12/97	7.37	1.68	5.69	--	--	--	--	<5000	63	<50	<50	<50	2100*	--	15,000
12/05/97	7.37	2.22	5.15	--	--	--	--	1300	120	<5.0	<5.0	8.5	2600*	--	15,000
02/16/98	7.37	1.11	6.26	--	--	--	--	1200	57	4.5	<2.5	7.0	1300*	--	12,000
06/17/98	7.37	2.41	4.96	--	--	--	--	5300	390	290	28	150	530*	--	17,000
08/31/98	7.37	1.46	5.91	--	--	--	--	<50	89	<0.5	<0.5	<0.5	2400*	--	14,000
08/31/98	7.37	1.46	5.91	--	--	--	Confirmation run	--	--	--	--	--	--	--	16,000
12/28/98	7.37	1.96	5.41	--	--	--	+	1000	52	5.6	4.6	9.1	2900*	--	8400
03/04/99	7.37	2.17	5.20	--	--	--	--	<2500	85.5	40.9	<25	<25	4490*	--	11,400

NO LONGER MONITORED OR SAMPLED

\* Chromatogram pattern indicates an unidentified hydrocarbon.

\*\* Chromatogram pattern indicates an unidentified hydrocarbon and weathered diesel.

+ See Additional Analyses.

## Cumulative Table of Well Data and Analytical Results

Vertical Measurements are in feet.

Volumetric Measurements are in gallons.

Analytical results are in parts per billion (ppb)

DATE	Well Head Elev.	Ground Water Elev.	Depth To Water	SPH Thickness	SPH Removed	Total SPH Removed	Notes	TPH-Gasoline	Benzene	Toluene	Ethyl-Benzene	Xylene	TPH-Diesel	TDS	MTBE
<b>MW-4A</b>															
04/19/99	7.69	2.78	4.91	--	--	--	--	<500	<5.0	<5.0	<5.0	<5.0	370*	--	1600
06/14/99	7.69	2.44	5.25	--	--	--	--	5360	312	<20	44	<20	2500*	--	2880
09/17/99	7.69	0.32	7.37	--	--	--	--	1290	38.6	<5.0	7.01	<5.0	1430*	--	1780
12/20/99	7.69	1.39	6.30	--	--	--	--	852	43.5	4.63	9.18	4.36	748*	--	1070

\* Chromatogram pattern indicates an unidentified hydrocarbon.

### Cumulative Table of Well Data and Analytical Results

Vertical Measurements are in feet.			Volumetric Measurements are in gallons.				Analytical results are in parts per billion (ppb)									
DATE	Well Head Elev.	Ground Water Elev.	Depth To Water	SPH Thickness	SPH Removed	Total SPH Removed	Notes	TPH-Gasoline	Benzene	Toluene	Ethyl-Benzene	Xylene	TPH-Diesel	TDS	MTBE	
<b>MW-5</b>																
06/23/92	14.14	1.90	12.24	--	--	--	--	<50	<0.5	<0.5	<0.5	<0.5	<50	--	--	
08/24/92	14.14	1.85	12.29	--	--	--	--	--	--	--	--	--	--	--	--	
09/21/92	14.14	1.68	12.46	--	--	--	--	<50	<0.5	<0.5	<0.5	<0.5	60	--	--	
10/26/92	14.14	1.62	12.52	--	--	--	--	--	--	--	--	--	--	--	--	
12/23/92	14.14	3.02	11.12	--	--	--	--	--	--	--	--	--	--	--	--	
01/08/93	14.14	--	--	--	--	--	--	--	--	--	--	--	--	--	--	
03/25/93	14.14	4.40	9.74	--	--	--	--	<50	<0.5	<0.5	<0.5	0.9	<10	--	--	
06/11/93	14.14	3.70	10.44	--	--	--	--	<50	<0.5	<0.5	<0.5	<0.5	--	770	--	
09/29/93	14.14	2.22	11.92	--	--	--	--	<50	<0.5	0.6	<0.5	0.6	<10	--	--	
12/20/93	14.14	--	--	--	--	--	--	--	--	--	--	--	--	--	--	
03/07/94	14.14	2.80	11.34	--	--	--	--	<50	<0.5	<0.5	<0.5	<0.5	<10	--	--	
06/17/94	14.14	2.87	11.27	--	--	--	--	<50	<0.5	<0.5	<0.5	<0.5	<50	--	--	
09/12/94	14.14	1.28	12.86	--	--	--	--	<50	<0.5	<0.5	<0.5	<0.5	<50	--	--	
11/30/94	14.14	2.23	11.91	--	--	--	--	<50	<0.5	<0.5	<0.5	<0.5	99*	--	<5.0	
03/24/95	14.14	4.38	9.76	--	--	--	--	<50	<0.5	<0.5	<0.5	<0.5	<50	--	--	
06/27/95	14.14	2.74	11.40	--	--	--	--	<50	<0.5	<0.5	<0.5	<0.5	55**	--	--	
09/28/95	14.14	2.24	11.90	--	--	--	--	<50	<0.5	<0.5	<0.5	<0.5	300**	--	--	
12/19/95	14.14	1.56	12.58	--	--	--	--	<50	<0.5	<0.5	<0.5	<0.5	53**	--	3.1	
02/28/96	14.14	2.44	11.70	--	--	--	--	<50	<0.5	<0.5	<0.5	<0.5	<50	--	<2.5	
06/25/96	14.14	2.71	11.43	--	--	--	--	<50	<0.5	<0.5	<0.5	<0.5	120**	--	36	
12/17/96	14.14	2.74	11.40	--	--	--	--	<50	<0.5	<0.5	<0.5	<0.5	89**	--	<2.5	
03/31/97	14.14	2.04	12.10	--	--	--	--	<50	<0.5	<0.5	<0.5	<0.5	150**	--	<2.5	
06/30/97	14.14	1.36	12.78	--	--	--	Sampled biannually	--	--	--	--	--	--	--	--	
09/12/97	14.14	0.46	13.68	--	--	--	--	<50	<0.5	<0.5	<0.5	<0.5	<50	--	<2.5	
12/05/97	14.14	1.11	13.03	--	--	--	--	--	--	--	--	--	--	--	--	
02/16/98	14.14	4.17	9.97	--	--	--	--	<50	<0.5	<0.5	<0.5	<0.5	62**	--	<2.5	
06/17/98	14.14	2.29	11.85	--	--	--	--	--	--	--	--	--	--	--	--	
08/31/98	14.14	1.32	12.82	--	--	--	--	<50	<0.5	<0.5	<0.5	<0.5	<50	--	<2.5	
12/28/98	14.14	0.71	13.43	--	--	--	+	--	--	--	--	--	--	--	--	
03/04/99	14.14	0.39	13.75	--	--	--	--	<50	<0.5	<0.5	<0.5	<0.5	70.5	--	3.34	
06/14/99	14.14	0.04	14.10	--	--	--	--	--	--	--	--	--	--	--	--	
09/17/99	14.14	-0.04	14.18	--	--	--	--	<50	<0.5	<0.5	<0.5	<0.5	<50	--	<2.5	
12/20/99	14.14	0.44	13.70	--	--	--	--	--	--	--	--	--	--	--	--	

\* Chromatogram pattern indicates an unidentified hydrocarbon.

\*\* Chromatogram pattern indicates an unidentified hydrocarbon and weathered diesel.

+ See Additional Analyses.

### Cumulative Table of Well Data and Analytical Results

Vertical Measurements are in feet.			Volumetric Measurements are in gallons.				Analytical results are in parts per billion (ppb)									
DATE	Well Head Elev.	Ground Water Elev.	Depth To Water	SPH Thickness	SPH Removed	Total SPH Removed	Notes	TPH-Gasoline	Benzene	Toluene	Ethyl-Benzene	Xylene	TPH-Diesel	TDS	MTBE	
<b>MW-6</b>																
06/23/92	4.46	-0.68	5.14	--	--	--	--	<50	4.3	<0.5	0.8	0.9	120	--	--	
08/24/92	4.46	-0.49	4.95	--	--	--	--	--	--	--	--	--	--	--	--	
09/21/92	4.46	-0.44	4.90	--	--	--	--	<250	<2.5	<2.5	<2.5	<2.5	<50	--	--	
10/26/92	4.46	-1.06	5.52	--	--	--	--	--	--	--	--	--	--	--	--	
12/23/92	4.46	-0.94	5.40	--	--	--	--	<50	<0.5	<0.5	<0.5	<0.5	81	--	--	
01/08/93	4.46	--	--	--	--	--	--	--	--	--	--	--	--	--	--	
03/25/93	4.46	-1.64	6.10	--	--	--	--	<50	<0.5	<0.5	<0.5	0.7	<10	--	--	
06/11/93	4.46	-2.10	6.56	--	--	--	--	<50	<0.5	<0.5	<0.5	<0.5	<10	15,000	--	
09/29/93	4.46	-0.71	5.17	--	--	--	--	<50	<0.5	<0.5	<0.5	<0.5	<10	--	--	
12/20/93	4.46	-1.47	5.93	--	--	--	--	<50	<0.5	<0.5	<0.5	<0.5	<10	--	--	
03/07/94	4.46	-0.81	5.27	--	--	--	--	54	<0.5	<0.5	<0.5	0.6	<10	--	--	
06/17/94	4.46	--	--	--	--	--	--	--	--	--	--	--	--	--	--	
09/12/94	4.46	-0.64	5.10	--	--	--	--	<50	<0.5	<0.5	<0.5	<0.5	<50	--	<50	
11/30/94	4.46	-1.12	5.58	--	--	--	--	<50	<0.5	<0.5	<0.5	<0.5	800*	--	--	
03/24/95	4.46	-1.87	6.33	--	--	--	--	<50	<0.5	<0.5	<0.5	<0.5	490**	--	--	
06/27/95	4.46	-3.74	8.20	--	--	--	--	<50	<0.5	<0.5	<0.5	<0.5	300**	--	--	
09/28/95	4.46	-0.19	4.65	--	--	--	--	120	1.1	<0.5	<0.5	<0.5	1200**	--	--	
12/19/95	4.46	-1.58	6.04	--	--	--	--	<50	<0.5	<0.5	<0.5	<0.5	820**	--	<2.5	
02/28/96	4.46	-1.54	6.00	--	--	--	--	<50	<0.5	<0.5	<0.5	<0.5	270**	--	<2.5	
06/25/96	4.46	-1.71	6.17	--	--	--	--	97	<0.5	<0.5	<0.5	0.71	750**	--	<2.5	
12/17/96	4.46	-1.67	6.13	--	--	--	--	65	<0.5	<0.5	<0.5	<0.5	540**	--	<2.5	
03/31/97	4.46	-2.23	6.69	--	--	--	--	65	<0.5	<0.5	<0.5	<0.5	780**	--	<2.5	
06/30/97	4.46	-2.62	7.08	--	--	--	Sampled biannually	--	--	--	--	--	--	--	--	
09/12/97	4.46	-0.95	5.41	--	--	--	--	65	<0.5	<0.5	<0.5	<0.5	270**	--	<2.5	
12/05/97	4.46	-1.96	6.42	--	--	--	--	--	--	--	--	--	--	--	--	
02/16/98	4.46	-0.30	4.76	--	--	--	--	140	<0.5	<0.5	<0.5	<0.5	330**	--	<2.5	
06/17/98	4.46	-1.54	6.00	--	--	--	--	--	--	--	--	--	--	--	--	
08/31/98	4.46	-0.64	5.10	--	--	--	--	<50	<0.5	<0.5	<0.5	<0.5	270*	--	<2.5	
12/28/98	4.46	-2.04	6.50	--	--	--	+	--	--	--	--	--	--	--	--	
03/04/99	4.46	-1.35	5.81	--	--	--	--	95.5	<0.5	<0.5	<0.5	<0.5	638*	--	<2.0	
06/14/99	4.46	-0.97	5.43	--	--	--	--	--	--	--	--	--	--	--	--	
09/17/99	4.46	-1.74	6.20	--	--	--	--	<50	<0.5	<0.5	<0.5	<0.5	258*	--	<2.5	
12/20/99	4.46	-2.31	6.77	--	--	--	--	--	--	--	--	--	--	--	--	

\* Chromatogram pattern indicates a non-diesel mix.  
 \*\* Chromatogram pattern indicates an unidentified hydrocarbon.  
 + See Additional Analyses.

### Cumulative Table of Well Data and Analytical Results

Vertical Measurements are in feet.				Volumetric Measurements are in gallons.			Analytical results are in parts per billion (ppb)								
DATE	Well Head Elev.	Ground Water Elev.	Depth To Water	SPH Thickness	SPH Removed	Total SPH Removed	Notes	TPH-Gasoline	Benzene	Toluene	Ethyl-Benzene	Xylene	TPH-Diesel	TDS	MTBE
<b>MW-7</b>															
08/24/92	5.26	-0.29	5.55	--	--	--	--	--	--	--	--	--	--	--	--
09/21/92	5.26	-0.39	5.65	--	--	--	--	<50	<0.5	<0.5	<0.5	<0.5	<50	--	--
10/26/92	5.26	-0.25	5.51	--	--	--	--	--	--	--	--	--	--	--	--
12/23/92	5.26	1.31	3.95	--	--	--	--	<50	2.9	<0.5	<0.5	<0.5	60	--	--
01/08/93	5.26	--	--	--	--	--	--	--	--	--	--	--	--	--	--
03/25/93	5.26	2.76	2.50	--	--	--	--	<50	<0.5	<0.5	<0.5	<0.5	<10	--	--
06/11/93	5.26	1.80	3.46	--	--	--	--	<50	0.6	<0.5	<0.5	<0.5	--	2200	--
09/29/93	5.26	-0.26	5.52	--	--	--	--	<50	2.0	1.0	1.0	7.0	<10	--	--
12/20/93	5.26	0.85	4.41	--	--	--	--	<50	2.0	<0.5	<0.5	<0.5	<10	--	--
03/07/94	5.26	2.64	2.62	--	--	--	--	<50	<0.5	<0.5	<0.5	<0.5	<10	--	--
06/17/94	5.26	1.99	3.27	--	--	--	--	<50	<0.5	<0.5	<0.5	<0.5	<50	--	--
09/12/94	5.26	1.15	4.11	--	--	--	--	<50	<0.5	<0.5	<0.5	<0.5	<50	--	<5.0
11/30/94	5.26	2.50	2.76	--	--	--	--	<50	<0.5	<0.5	<0.5	<0.5	92*	--	--
03/24/95	5.26	3.06	2.20	--	--	--	--	<50	<0.5	<0.5	<0.5	<0.5	<50	--	--
06/27/95	5.26	1.36	3.90	--	--	--	--	<50	<0.5	<0.5	<0.5	<0.5	69**	--	--
09/28/95	5.26	0.41	4.85	--	--	--	--	<50	<0.5	<0.5	<0.5	<0.5	84**	--	--
12/19/95	5.26	2.24	3.02	--	--	--	--	<50	<0.5	<0.5	<0.5	<0.5	84**	--	<2.5
02/28/96	5.26	3.83	1.43	--	--	--	--	<50	<0.5	<0.5	<0.5	<0.5	99**	--	<2.5
06/25/96	5.26	0.97	4.29	--	--	--	--	<50	<0.5	<0.5	<0.5	<0.5	110**	--	<2.5
12/17/96	5.26	3.08	2.18	--	--	--	--	<50	<0.5	<0.5	<0.5	<0.5	54**	--	<2.5
03/31/97	5.26	2.32	2.94	--	--	--	--	<50	<0.5	<0.5	<0.5	<0.5	100**	--	<2.5
06/30/97	5.26	1.68	3.58	--	--	--	Sampled annually	--	--	--	--	--	--	--	--
09/12/97	5.26	1.85	3.41	--	--	--	--	--	--	--	--	--	--	--	--
12/05/97	5.26	3.37	1.89	--	--	--	--	--	--	--	--	--	--	--	--
02/16/98	5.26	3.43	1.83	--	--	--	--	<50	<0.5	<0.5	<0.5	<0.5	77**	--	<2.5
06/17/98	5.26	3.32	1.94	--	--	--	--	--	--	--	--	--	--	--	--
08/31/98	5.26	1.07	4.19	--	--	--	--	--	--	--	--	--	--	--	--
12/28/98	5.26	0.79	4.47	--	--	--	+	--	--	--	--	--	--	--	--
03/04/99	5.26	3.51	1.75	--	--	--	--	<50	<0.5	<0.5	<0.5	<0.5	73.4	--	<2.0
06/14/99	5.26	3.64	1.62	--	--	--	--	--	--	--	--	--	--	--	--
09/17/99	5.26	0.42	4.84	--	--	--	--	--	--	--	--	--	--	--	--
12/20/99	5.26	0.45	4.81	--	--	--	--	--	--	--	--	--	--	--	--

\* Chromatogram pattern indicates a non-diesel mix.  
 \*\* Chromatogram pattern indicates an unidentified hydrocarbon.  
 + See Additional Analyses.



## Cumulative Table of Well Data and Analytical Results

Vertical Measurements are in feet.			Volumetric Measurements are in gallons.				Analytical results are in parts per billion (ppb)									
DATE	Well Head Elev.	Ground Water Elev.	Depth To Water	SPH Thickness	SPH Removed	Total SPH Removed	Notes	TPH-Gasoline	Benzene	Toluene	Ethyl-Benzene	Xylene	TPH-Diesel	TDS	MTBE	
<b>MW-8</b>																
06/23/92	8.94	-15.20	24.14	--	--	--	--	<50	<0.5	<0.5	<0.5	<0.5	<50	--	--	
08/24/92	8.94	0.34	8.60	--	--	--	--	--	--	--	--	--	--	--	--	
09/21/92	8.94	0.55	8.39	--	--	--	--	94	<0.5	<0.5	<0.5	<0.5	<50	--	--	
10/26/92	8.94	-0.18	9.12	--	--	--	--	--	--	--	--	--	--	--	--	
12/23/92	8.94	0.83	8.11	--	--	--	--	<50	0.7	5.0	0.7	2.9	79	--	--	
01/08/93	8.94	--	--	--	--	--	--	--	--	--	--	--	--	--	--	
03/25/93	8.94	--	--	--	--	--	--	--	--	--	--	--	--	--	--	
06/11/93	8.94	0.55	8.39	--	--	--	--	<50	<0.5	<0.5	<0.5	<0.5	--	3500	--	
09/29/93	8.94	0.69	8.25	--	--	--	--	<50	<0.5	<0.5	<0.5	<0.5	<10	--	--	
12/20/93	8.94	0.48	8.46	--	--	--	--	<50	<0.5	0.6	<0.5	1.0	<10	--	--	
03/07/94	8.94	0.28	8.66	--	--	--	--	<50	<0.5	<0.5	<0.5	<0.5	<10	--	--	
06/17/94	8.94	0.12	8.82	--	--	--	--	<50	<0.5	<0.5	<0.5	<0.5	<10	--	--	
09/12/94	8.94	0.11	8.83	--	--	--	--	<50	<0.5	<0.5	<0.5	<0.5	<50	--	--	
11/30/94	8.94	0.31	8.63	--	--	--	--	<50	<0.5	<0.5	<0.5	0.8	<50	--	<5.0	
03/24/95	8.94	0.43	8.51	--	--	--	--	<50	<0.5	<0.5	<0.5	<0.5	120*	--	--	
06/27/95	8.94	-0.03	8.97	--	--	--	--	<50	<0.5	<0.5	<0.5	<0.5	110**	--	--	
09/28/95	8.94	0.04	8.90	--	--	--	--	<50	<0.5	<0.5	<0.5	<0.5	67**	--	--	
12/19/95	8.94	0.54	8.40	--	--	--	--	<50	<0.5	<0.5	<0.5	<0.5	91**	--	--	
02/28/96	8.94	0.50	8.44	--	--	--	--	<50	<0.5	<0.5	<0.5	<0.5	76**	--	<2.5	
06/25/96	8.94	0.05	8.89	--	--	--	--	<50	<0.5	<0.5	<0.5	<0.5	<50	--	<2.5	
12/17/96	8.94	0.49	8.45	--	--	--	--	<50	<0.5	<0.5	<0.5	<0.5	80**	--	<2.5	
03/31/97	8.94	0.18	8.76	--	--	--	--	<50	<0.5	<0.5	<0.5	<0.5	79**	--	<2.5	
06/30/97	8.94	-0.18	9.12	--	--	--	Sampled annually	<50	<0.5	<0.5	<0.5	<0.5	72**	--	3.6	
09/12/97	8.94	0.13	8.81	--	--	--	--	--	--	--	--	--	--	--	--	
12/05/97	8.94	0.59	8.35	--	--	--	--	--	--	--	--	--	--	--	--	
02/16/98	8.94	1.00	7.94	--	--	--	--	<50	<0.5	<0.5	<0.5	<0.5	68**	--	4.3	
06/17/98	8.94	0.51	8.43	--	--	--	--	--	--	--	--	--	--	--	--	
08/31/98	8.94	0.06	8.88	--	--	--	--	--	--	--	--	--	--	--	--	
12/28/98	8.94	0.64	8.30	--	--	--	+	--	--	--	--	--	--	--	--	
03/04/99	8.94	0.29	8.65	--	--	--	--	<50	<0.5	<0.5	<0.5	<0.5	106	--	3.83	
06/14/99	8.94	0.52	8.42	--	--	--	--	--	--	--	--	--	--	--	--	
09/17/99	8.94	-0.93	9.87	--	--	--	--	--	--	--	--	--	--	--	--	
12/20/99	8.94	0.54	8.40	--	--	--	--	--	--	--	--	--	--	--	--	

\* Chromatogram pattern indicates a non-diesel mix.

\*\* Chromatogram pattern indicates an unidentified hydrocarbon.

+ See Additional Analyses.

## Cumulative Table of Well Data and Analytical Results

Vertical Measurements are in feet.

Volumetric Measurements are in gallons.

Analytical results are in parts per billion (ppb)

DATE	Vertical Measurements are in feet.			Volumetric Measurements are in gallons.				Analytical results are in parts per billion (ppb)							
	Well Head Elev.	Ground Water Elev.	Depth To Water	SPH Thickness	SPH Removed	Total SPH Removed	Notes	TPH-Gasoline	Benzene	Toluene	Ethyl-Benzene	Xylene	TPH-Diesel	TDS	MTBE
<b>MW-9</b>															
04/19/99	5.87	2.71	3.16	--	--	--	--	3900**	14	6.9	14	24	2600*	--	140
06/14/99	5.87	1.06	4.81	--	--	--	--	2880	12.6	<10	<10	<10	2800*	--	138
09/17/99	5.87	1.02	4.85	--	--	--	--	3370	33.1	14.4	<5.0	<5.0	1770*	--	202
12/20/99	5.87	1.87	4.00	--	--	--	--	3970	42.2	13.5	<10	<10	996*	--	311

\* Chromatogram pattern indicates an unidentified hydrocarbon.

\*\* Laboratory report indicates gasoline and unidentified hydrocarbons >10.

### Cumulative Table of Well Data and Analytical Results

Vertical Measurements are in feet.

Volumetric Measurements are in gallons.

Analytical results are in parts per billion (ppb)

DATE	Well Head Elev.	Ground Water Elev.	Depth To Water	SPH Thickness	SPH Removed	Total SPH Removed	Notes	TPH-Gasoline	Benzene	Toluene	Ethyl-Benzene	Xylene	TPH-Diesel	TDS	MTBE
<b>TRIP BLANK</b>															
08/24/92	--	--	--	--	--	--	--	--	--	--	--	--	--	--	--
09/21/92	--	--	--	--	--	--	--	<50	<0.5	<0.5	<0.5	<0.5	--	--	--
10/26/92	--	--	--	--	--	--	--	--	--	--	--	--	--	--	--
12/23/92	--	--	--	--	--	--	--	<50	<0.5	<0.5	<0.5	<0.5	--	--	--
01/08/93	--	--	--	--	--	--	--	--	--	--	--	--	--	--	--
03/25/93	--	--	--	--	--	--	--	<50	<0.5	<0.5	<0.5	<0.5	--	--	--
06/11/93	--	--	--	--	--	--	--	<50	<0.5	<0.5	<0.5	<0.5	--	--	--
09/29/93	--	--	--	--	--	--	--	<50	<0.5	<0.5	<0.5	<0.5	--	--	--
12/20/93	--	--	--	--	--	--	--	<50	<0.5	<0.5	<0.5	<0.5	--	--	--
03/07/94	--	--	--	--	--	--	--	<50	<0.5	<0.5	<0.5	<0.5	--	--	--
06/17/94	--	--	--	--	--	--	--	<50	<0.5	<0.5	<0.5	<0.5	--	--	--
09/12/94	--	--	--	--	--	--	--	<50	<0.5	<0.5	<0.5	1.0	--	--	--
11/30/94	--	--	--	--	--	--	--	<50	<0.5	<0.5	<0.5	<0.5	--	--	--
03/24/95	--	--	--	--	--	--	--	<50	<0.5	<0.5	<0.5	<0.5	--	--	--
06/27/95	--	--	--	--	--	--	--	<50	<0.5	<0.5	<0.5	<0.5	--	--	--
09/28/95	--	--	--	--	--	--	--	<50	<0.5	<0.5	<0.5	<0.5	--	--	--
12/19/95	--	--	--	--	--	--	--	<50	<0.5	<0.5	<0.5	<0.5	--	--	--
02/28/96	--	--	--	--	--	--	--	<50	<0.5	<0.5	<0.5	<0.5	--	--	--
06/25/96	--	--	--	--	--	--	--	<50	<0.5	<0.5	<0.5	<0.5	--	--	--
12/17/96	--	--	--	--	--	--	--	<50	<0.5	<0.5	<0.5	<0.5	--	--	<2.5
03/31/97	--	--	--	--	--	--	--	<50	<0.5	<0.5	<0.5	<0.5	--	--	<2.5
06/30/97	--	--	--	--	--	--	--	<50	<0.5	<0.5	<0.5	<0.5	--	--	<2.5
09/12/97	--	--	--	--	--	--	--	<50	<0.5	<0.5	<0.5	<0.5	--	--	<2.5
12/05/97	--	--	--	--	--	--	--	<50	<0.5	<0.5	<0.5	<0.5	--	--	<2.5
02/16/98	--	--	--	--	--	--	--	<50	<0.5	<0.5	<0.5	<0.5	--	--	<2.5
06/17/98	--	--	--	--	--	--	--	<50	<0.5	<0.5	<0.5	<0.5	--	--	<2.5
08/31/98	--	--	--	--	--	--	--	<50	<0.5	<0.5	<0.5	<0.5	--	--	<2.5
12/28/98	--	--	--	--	--	--	--	<50	<0.5	<0.5	<0.5	<0.5	--	--	<2.5
03/04/99	--	--	--	--	--	--	--	<50	<0.5	<0.5	<0.5	<0.5	--	--	<2.0
06/14/99	--	--	--	--	--	--	--	<50	<0.5	<0.5	<0.5	<0.5	--	--	<2.5
09/17/99	--	--	--	--	--	--	--	<50	<0.5	<0.5	<0.5	<0.5	--	--	<2.5
12/20/99	--	--	--	--	--	--	--	<50	<0.5	<0.5	<0.5	<0.5	--	--	<2.5

## Cumulative Table of Well Data and Analytical Results

### ADDITIONAL ANALYSES

Analytical values are in parts per billion (ppb)

DATE	Notes	Total Alkalinity	Ferrous Iron	Sulfate	Nitrate
<b>MW-1</b>					
12/28/98	--	390,000	4900	<1000	<1000
<b>MW-3</b>					
12/28/98	--	980,000	4500	390,000	<1000
<b>MW-4</b>					
12/28/98	--	670,000	3500	6800	<1000
<b>MW-5</b>					
12/28/98	--	480,000	15	51,000	<1000
<b>MW-6</b>					
12/28/98	--	2,400,000	810	110,000	<1000
<b>MW-7</b>					
12/28/98	--	350,000	12,000	79,000	<1000
<b>MW-8</b>					
12/28/98	--	1,100,000	45	87,000	<1000

Note: Blaine Tech Services, Inc. began routine monitoring of the groundwater wells at this site on November 1, 1994.  
 Earlier field data and analytical results are drawn from the September 27, 1994 Groundwater Technology, Inc. report.  
 Wells MW-2A, MW-3A, MW-4A and MW-9 were surveyed on April 12, 1999 by Virgil Chavez of Vallejo, California.

#### ABBREVIATIONS:

TPH = Total Petroleum Hydrocarbons  
 TDS = Total Dissolved Solids  
 MTBE = Methyl-tert-butyl Ether  
 SPH = Separate Phase Hydrocarbons

# **Analytical Appendix**



January 10, 2000

Scott Boor  
Blaine Tech Services (Chev)  
1680 Rogers Avenue  
San Jose, CA 95112

RE: Chevron 9-0121/M912756

Dear Scott Boor

Enclosed are the results of analyses for sample(s) received by the laboratory on December 21, 1999. Chromatograms for unidentified hydrocarbons are included in this report. If you have any questions concerning this report, please feel free to contact me.

Sincerely,

Wendy Bonnes  
Project Manager

CA ELAP Certificate Number 1210





Blaine Tech Services (Chev) 1680 Rogers Avenue San Jose, CA 95112	Project: Chevron 9-0121 (3026 Lakeshore Ave., Oakland) Project Number: 991220 M-2 Project Manager: Scott Boor	Sampled: 12/20/99 Received: 12/21/99 Reported: 1/10/00
---	---	--

**ANALYTICAL REPORT FOR M912756**

Sample Description	Laboratory Sample Number	Sample Matrix	Date Sampled
MW-1	M912756-01	Water	12/20/99
MW-2A	M912756-02	Water	12/20/99
MW-3A	M912756-03	Water	12/20/99
MW-4A	M912756-04	Water	12/20/99
MW-9	M912756-05	Water	12/20/99
TB	M912756-06	Water	12/20/99





Blaine Tech Services (Chev) 1680 Rogers Avenue San Jose, CA 95112	Project: Chevron 9-0121 (3026 Lakeshore Ave., Oakland) Project Number: 991220 M-2 Project Manager: Scott Boor	Sampled: 12/20/99 Received: 12/21/99 Reported: 1/10/00
---	---	--

**Total Purgeable Hydrocarbons (C6-C12), BTEX and MTBE by DHS LUFT  
Sequoia Analytical - Morgan Hill**

Analyte	Batch Number	Date Prepared	Date Analyzed	Surrogate Limits	Reporting Limit	Result	Units	Notes*
<b>MW-1</b>				<b>M912756-01</b>			<b>Water</b>	
Purgeable Hydrocarbons	0010006	1/1/00	1/1/00		1000	2990	ug/l	1,D
Benzene	"	"	"		10.0	218	"	D
Toluene	"	"	"		10.0	16.3	"	D
Ethylbenzene	"	"	"		10.0	20.0	"	D
Xylenes (total)	"	"	"		10.0	ND	"	D
Methyl tert-butyl ether	"	"	"		50.0	232	"	D
Surrogate: a,a,a-Trifluorotoluene	"	"	"	70.0-130		108	%	
<b>MW-2A</b>				<b>M912756-02</b>			<b>Water</b>	
Purgeable Hydrocarbons	0010006	1/1/00	1/1/00		1000	2280	ug/l	1,D
Benzene	"	"	"		10.0	115	"	D
Toluene	"	"	"		10.0	ND	"	D
Ethylbenzene	"	"	"		10.0	87.2	"	D
Xylenes (total)	"	"	"		10.0	27.2	"	D
Methyl tert-butyl ether	"	"	1/3/00		250	14000	"	2,D
Surrogate: a,a,a-Trifluorotoluene	"	"	1/1/00	70.0-130		99.3	%	
<b>MW-3A</b>				<b>M912756-03</b>			<b>Water</b>	
Purgeable Hydrocarbons	0010006	1/1/00	1/1/00		50.0	ND	ug/l	1
Benzene	"	"	"		0.500	1.82	"	
Toluene	"	"	"		0.500	ND	"	
Ethylbenzene	"	"	"		0.500	ND	"	
Xylenes (total)	"	"	"		0.500	ND	"	
Methyl tert-butyl ether	"	"	"		2.50	11.0	"	
Surrogate: a,a,a-Trifluorotoluene	"	"	"	70.0-130		96.4	%	
<b>MW-4A</b>				<b>M912756-04</b>			<b>Water</b>	
Purgeable Hydrocarbons	0010006	1/1/00	1/1/00		250	852	ug/l	1,D
Benzene	"	"	"		2.50	43.5	"	D
Toluene	"	"	"		2.50	4.63	"	D
Ethylbenzene	"	"	"		2.50	9.18	"	D
Xylenes (total)	"	"	"		2.50	4.36	"	D
Methyl tert-butyl ether	"	"	"		12.5	1070	"	D
Surrogate: a,a,a-Trifluorotoluene	"	"	"	70.0-130		104	%	
<b>MW-9</b>				<b>M912756-05</b>			<b>Water</b>	
Purgeable Hydrocarbons	9120920	12/30/99	12/30/99		1000	3970	ug/l	1,D
Benzene	"	"	"		10.0	42.2	"	D
Toluene	"	"	"		10.0	13.5	"	D
Ethylbenzene	"	"	"		10.0	ND	"	D
Xylenes (total)	"	"	"		10.0	ND	"	D







Blaine Tech Services (Chev) 1680 Rogers Avenue San Jose, CA 95112	Project: Chevron 9-0121 (3026 Lakeshore Ave., Oakland) Project Number: 991220 M-2 Project Manager: Scott Boor	Sampled: 12/20/99 Received: 12/21/99 Reported: 1/10/00
---	---	--

**Total Purgeable Hydrocarbons (C6-C12), BTEX and MTBE by DHS LUFT  
Sequoia Analytical - Morgan Hill**

Analyte	Batch Number	Date Prepared	Date Analyzed	Surrogate Limits	Reporting Limit	Result	Units	Notes*
<b>MW-9 (continued)</b>				<b>M912756-05</b>			<b>Water</b>	
Methyl tert-butyl ether	9120920	12/30/99	12/30/99		50.0	311	ug/l	D
Surrogate: a,a,a-Trifluorotoluene	"	"	"	70.0-130		97.6	%	
<b>TB</b>				<b>M912756-06</b>			<b>Water</b>	
Purgeable Hydrocarbons	9120920	12/30/99	12/30/99		50.0	ND	ug/l	
Benzene	"	"	"		0.500	ND	"	
Toluene	"	"	"		0.500	ND	"	
Ethylbenzene	"	"	"		0.500	ND	"	
Xylenes (total)	"	"	"		0.500	ND	"	
Methyl tert-butyl ether	"	"	"		2.50	ND	"	
Surrogate: a,a,a-Trifluorotoluene	"	"	"	70.0-130		91.0	%	





Blaine Tech Services (Chev) 1680 Rogers Avenue San Jose, CA 95112	Project: Chevron 9-0121 (3026 Lakeshore Ave., Oakland) Project Number: 991220 M-2 Project Manager: Scott Boor	Sampled: 12/20/99 Received: 12/21/99 Reported: 1/10/00
---	---	--

**Diesel Hydrocarbons (C9-C24) by DHS LUFT  
Sequoia Analytical - Morgan Hill**

Analyte	Batch Number	Date Prepared	Date Analyzed	Surrogate Limits	Reporting Limit	Result	Units	Notes*
<b>MW-1</b>				<b>M912756-01</b>			<b>Water</b>	
<b>Diesel Range Hydrocarbons</b>	9120915	12/29/99	1/6/00		0.0500	<b>1.84</b>	mg/l	3
<i>Surrogate: n-Pentacosane</i>	"	"	"	50.0-150		127	%	
<b>MW-2A</b>				<b>M912756-02</b>			<b>Water</b>	
<b>Diesel Range Hydrocarbons</b>	9120915	12/29/99	1/6/00		0.0500	<b>2.82</b>	mg/l	3
<i>Surrogate: n-Pentacosane</i>	"	"	"	50.0-150		137	%	
<b>MW-3A</b>				<b>M912756-03</b>			<b>Water</b>	
<b>Diesel Range Hydrocarbons</b>	9120915	12/29/99	1/6/00		0.0500	<b>0.153</b>	mg/l	3
<i>Surrogate: n-Pentacosane</i>	"	"	1/5/00	50.0-150		126	%	
<b>MW-4A</b>				<b>M912756-04</b>			<b>Water</b>	
<b>Diesel Range Hydrocarbons</b>	9120931	12/30/99	1/3/00		0.0500	<b>0.748</b>	mg/l	3
<i>Surrogate: n-Pentacosane</i>	"	"	"	50.0-150		108	%	
<b>MW-9</b>				<b>M912756-05</b>			<b>Water</b>	
<b>Diesel Range Hydrocarbons</b>	9120931	12/30/99	1/3/00		0.0500	<b>0.996</b>	mg/l	3
<i>Surrogate: n-Pentacosane</i>	"	"	"	50.0-150		61.2	%	





Blaine Tech Services (Chev) 1680 Rogers Avenue San Jose, CA 95112	Project: Chevron 9-0121 (3026 Lakeshore Ave., Oakland) Project Number: 991220 M-2 Project Manager: Scott Boor	Sampled: 12/20/99 Received: 12/21/99 Reported: 1/10/00
---	---	--

**Total Purgeable Hydrocarbons (C6-C12), BTEX and MTBE by DHS LUFT/Quality Control  
Sequoia Analytical - Morgan Hill**

Analyte	Date Analyzed	Spike Level	Sample Result	QC Result	Reporting Limit Units	Recov. %	RPD Limit	RPD %	Notes*
<b>Batch: 0010006</b>			<b>Date Prepared: 1/1/00</b>			<b>Extraction Method: EPA 5030B (P/T)</b>			
<b>Blank</b>			<b>0010006-BLK1</b>						
Purgeable Hydrocarbons	1/1/00			ND	ug/l	50.0			
Benzene	"			ND	"	0.500			
Toluene	"			ND	"	0.500			
Ethylbenzene	"			ND	"	0.500			
Xylenes (total)	"			ND	"	0.500			
Methyl tert-butyl ether	"			ND	"	2.50			
Surrogate: a,a,a-Trifluorotoluene	"	10.0		9.92	"	70.0-130	99.2		
<b>LCS</b>			<b>0010006-BS1</b>						
Benzene	1/1/00	10.0		8.62	ug/l	70.0-130	86.2		
Toluene	"	10.0		9.84	"	70.0-130	98.4		
Ethylbenzene	"	10.0		11.4	"	70.0-130	114		
Xylenes (total)	"	30.0		33.5	"	70.0-130	112		
Surrogate: a,a,a-Trifluorotoluene	"	10.0		9.84	"	70.0-130	98.4		
<b>LCS Dup</b>			<b>0010006-BSD1</b>						
Benzene	1/1/00	10.0		8.50	ug/l	70.0-130	85.0	25.0	1.40
Toluene	"	10.0		9.73	"	70.0-130	97.3	25.0	1.12
Ethylbenzene	"	10.0		11.4	"	70.0-130	114	25.0	0
Xylenes (total)	"	30.0		33.3	"	70.0-130	111	25.0	0.897
Surrogate: a,a,a-Trifluorotoluene	"	10.0		9.54	"	70.0-130	95.4		
<b>Batch: 9120920</b>			<b>Date Prepared: 12/30/99</b>			<b>Extraction Method: EPA 5030B (P/T)</b>			
<b>Blank</b>			<b>9120920-BLK1</b>						
Purgeable Hydrocarbons	12/30/99			ND	ug/l	50.0			
Benzene	"			ND	"	0.500			
Toluene	"			ND	"	0.500			
Ethylbenzene	"			ND	"	0.500			
Xylenes (total)	"			ND	"	0.500			
Methyl tert-butyl ether	"			ND	"	2.50			
Surrogate: a,a,a-Trifluorotoluene	"	10.0		8.98	"	70.0-130	89.8		
<b>LCS</b>			<b>9120920-BS1</b>						
Purgeable Hydrocarbons	12/30/99	250		234	ug/l	70.0-130	93.6		
Surrogate: a,a,a-Trifluorotoluene	"	10.0		9.08	"	70.0-130	90.8		
<b>Matrix Spike</b>			<b>9120920-MS1 M912753-04</b>						
Purgeable Hydrocarbons	12/30/99	250	ND	279	ug/l	60.0-140	112		
Surrogate: a,a,a-Trifluorotoluene	"	10.0		9.61	"	70.0-130	96.1		





Blaine Tech Services (Chev) 1680 Rogers Avenue San Jose, CA 95112	Project: Chevron 9-0121 (3026 Lakeshore Ave., Oakland) Project Number: 991220 M-2 Project Manager: Scott Boor	Sampled: 12/20/99 Received: 12/21/99 Reported: 1/10/00
---	---	--

**Total Purgeable Hydrocarbons (C6-C12), BTEX and MTBE by DHS LUFT/Quality Control  
Sequoia Analytical - Morgan Hill**

Analyte	Date Analyzed	Spike Level	Sample Result	QC Result	Units	Reporting Limit Recov. Limits	Recov. %	RPD Limit	RPD %	Notes*
<b>Matrix Spike Dup</b>	<b>9120920-MSD1</b>	<b>M912753-04</b>								
Purgeable Hydrocarbons	12/30/99	250	ND	265	ug/l	60.0-140	106	25.0	5.50	
Surrogate: a,a,a-Trifluorotoluene	"	10.0		9.22	"	70.0-130	92.2			





Blaine Tech Services (Chev) 1680 Rogers Avenue San Jose, CA 95112	Project: Chevron 9-0121 (3026 Lakeshore Ave., Oakland) Project Number: 991220 M-2 Project Manager: Scott Boor	Sampled: 12/20/99 Received: 12/21/99 Reported: 1/10/00
---	---	--

**Diesel Hydrocarbons (C9-C24) by DHS LUFT/Quality Control  
Sequoia Analytical - Morgan Hill**

Analyte	Date Analyzed	Spike Level	Sample Result	QC Result	Units	Reporting Limit Recov. Limits	Recov. %	RPD Limit	RPD %	Notes*
<b>Batch: 9120915</b>			<b>Date Prepared: 12/29/99</b>			<b>Extraction Method: EPA 3510B</b>				
<b>Blank</b>			<b>9120915-BLK1</b>							
Diesel Range Hydrocarbons	1/5/00			ND	mg/l	0.0500				
Surrogate: n-Pentacosane	"	0.100		0.0610	"	50.0-150	61.0			
<b>LCS</b>			<b>9120915-BS1</b>							
Diesel Range Hydrocarbons	1/5/00	1.00		0.900	mg/l	60.0-140	90.0			
Surrogate: n-Pentacosane	"	0.100		0.109	"	50.0-150	109			
<b>LCS Dup</b>			<b>9120915-BSD1</b>							
Diesel Range Hydrocarbons	1/5/00	1.00		0.813	mg/l	60.0-140	81.3	50.0	10.2	
Surrogate: n-Pentacosane	"	0.100		0.108	"	50.0-150	108			
<b>Batch: 9120931</b>			<b>Date Prepared: 12/30/99</b>			<b>Extraction Method: EPA 3510B</b>				
<b>Blank</b>			<b>9120931-BLK1</b>							
Diesel Range Hydrocarbons	1/3/00			ND	mg/l	0.0500				
Surrogate: n-Pentacosane	"	0.100		0.0936	"	50.0-150	93.6			
<b>LCS</b>			<b>9120931-BS1</b>							
Diesel Range Hydrocarbons	1/3/00			0.891	mg/l	60.0-140				
Surrogate: n-Pentacosane	"	0.100		0.0954	"	50.0-150	95.4			
<b>Matrix Spike</b>			<b>9120931-MS1 M912944-05</b>							
Diesel Range Hydrocarbons	1/3/00	1.00	0.0772	0.930	mg/l	50.0-150	85.3			
Surrogate: n-Pentacosane	"	0.100		0.110	"	50.0-150	110			
<b>Matrix Spike Dup</b>			<b>9120931-MSD1 M912944-05</b>							
Diesel Range Hydrocarbons	1/3/00	1.00	0.0772	0.939	mg/l	50.0-150	86.2	50.0	1.05	
Surrogate: n-Pentacosane	"	0.100		0.110	"	50.0-150	110			





Blaine Tech Services (Chev) 1680 Rogers Avenue San Jose, CA 95112	Project: Chevron 9-0121 (3026 Lakeshore Ave., Oakland) Project Number: 991220 M-2 Project Manager: Scott Boor	Sampled: 12/20/99 Received: 12/21/99 Reported: 1/10/00
---	---	--

**Notes and Definitions**

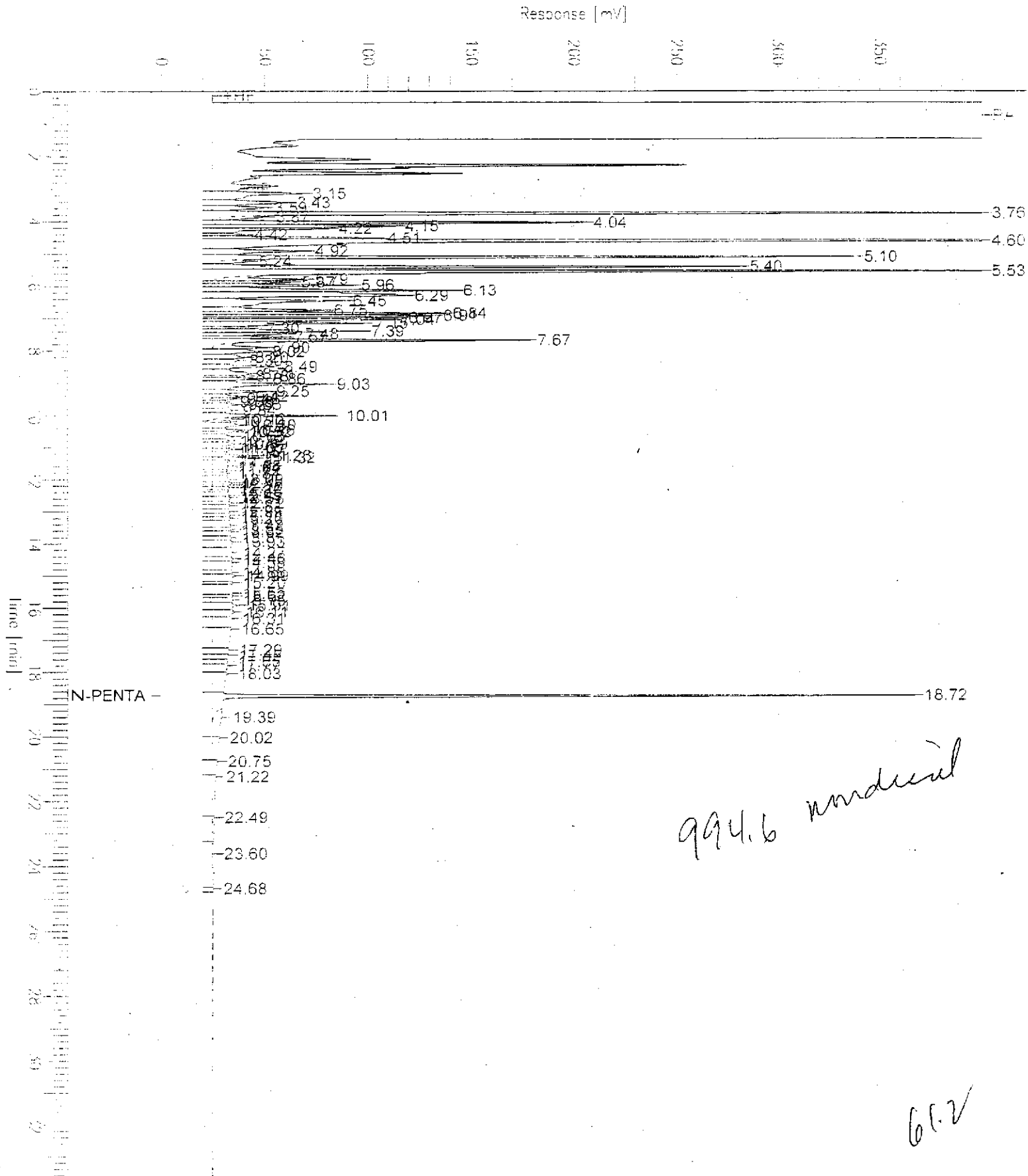
#	Note
D	Data reported from a dilution.
1	Chromatogram Pattern: Gasoline C6-C12
2	Sample was analyzed at a second dilution per clients request.
3	Chromatogram Pattern: Unidentified Hydrocarbons C9-C24
DET	Analyte DETECTED
ND	Analyte NOT DETECTED at or above the reporting limit
NR	Not Reported
dry	Sample results reported on a dry weight basis
Recov.	Recovery
RPD	Relative Percent Difference



# Chromatogram

Sample Name : M912756-05 (500:1)  
FileName : C:\DATA\GHP\_04\0109\103&011.raw  
Method : TPH04A  
Start Time : 0.00 min End Time : 33.65 min  
Scale Factor: 0.0 Plot Offset: 0 mV

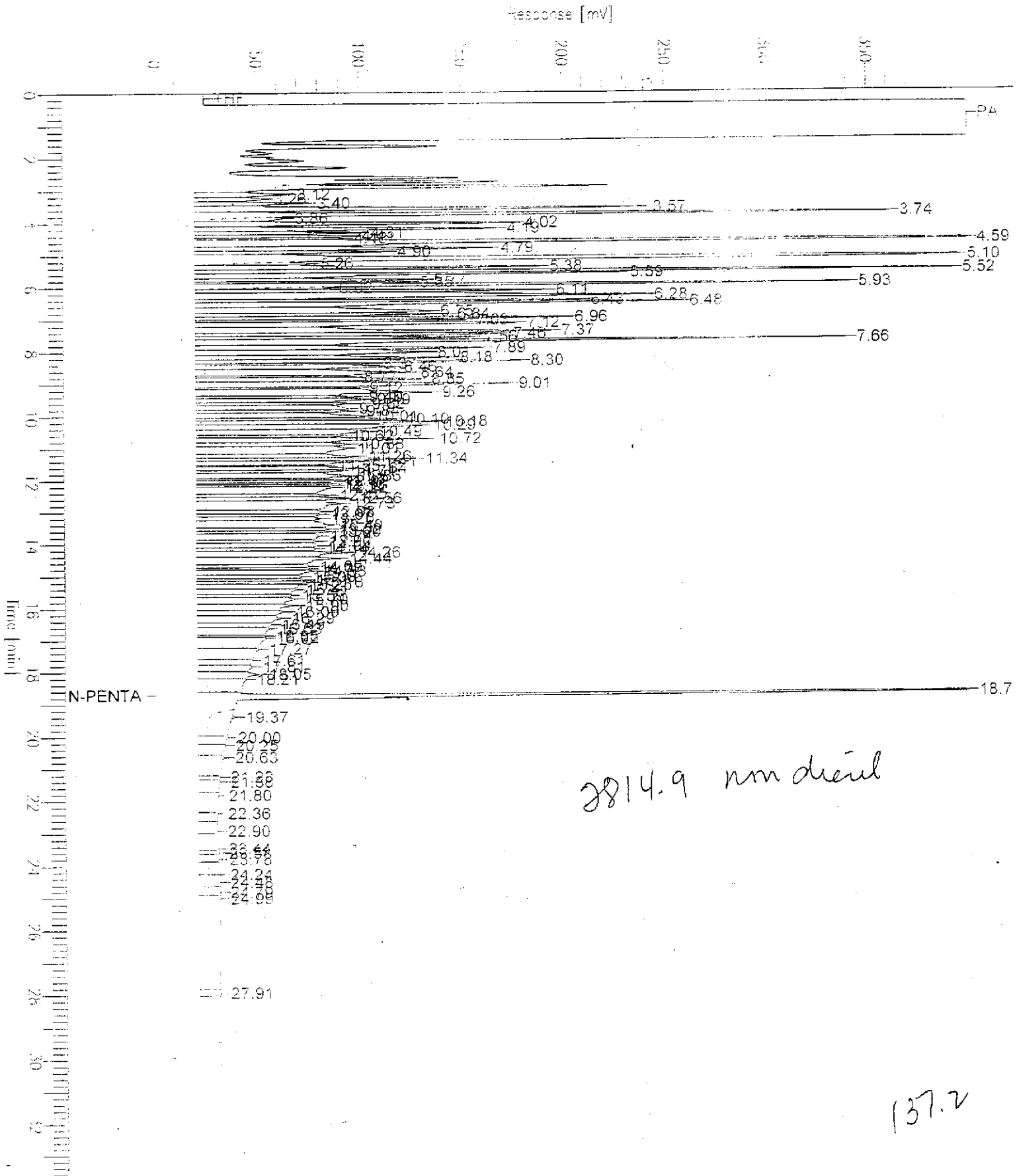
Sample #: MW-9 Page 1 of 1  
Date : 1/3/00 08:19 PM  
Time of Injection: 1/3/00 07:45 PM  
Low Point : 0.00 mV High Point : 400.00 mV  
Plot Scale: 400.0 mV



# Chromatogram

Sample Name : M912756-02 (500:1)  
File Name : C:\DATA\GHP\_04\0109\105A022.raw  
Method : TPH04A  
Start Time : 0.00 min End Time : 33.65 min  
Scale Factor : 0.0 Plot Offset : 0 mV

Sample #: MW-2A Page 1 of 1  
Date : 1/6/00 09:45 AM  
Time of Injection: 1/6/00 02:09 AM  
Low Point : 0.00 mV High Point : 400.00 mV  
Plot Scale: 400.0 mV



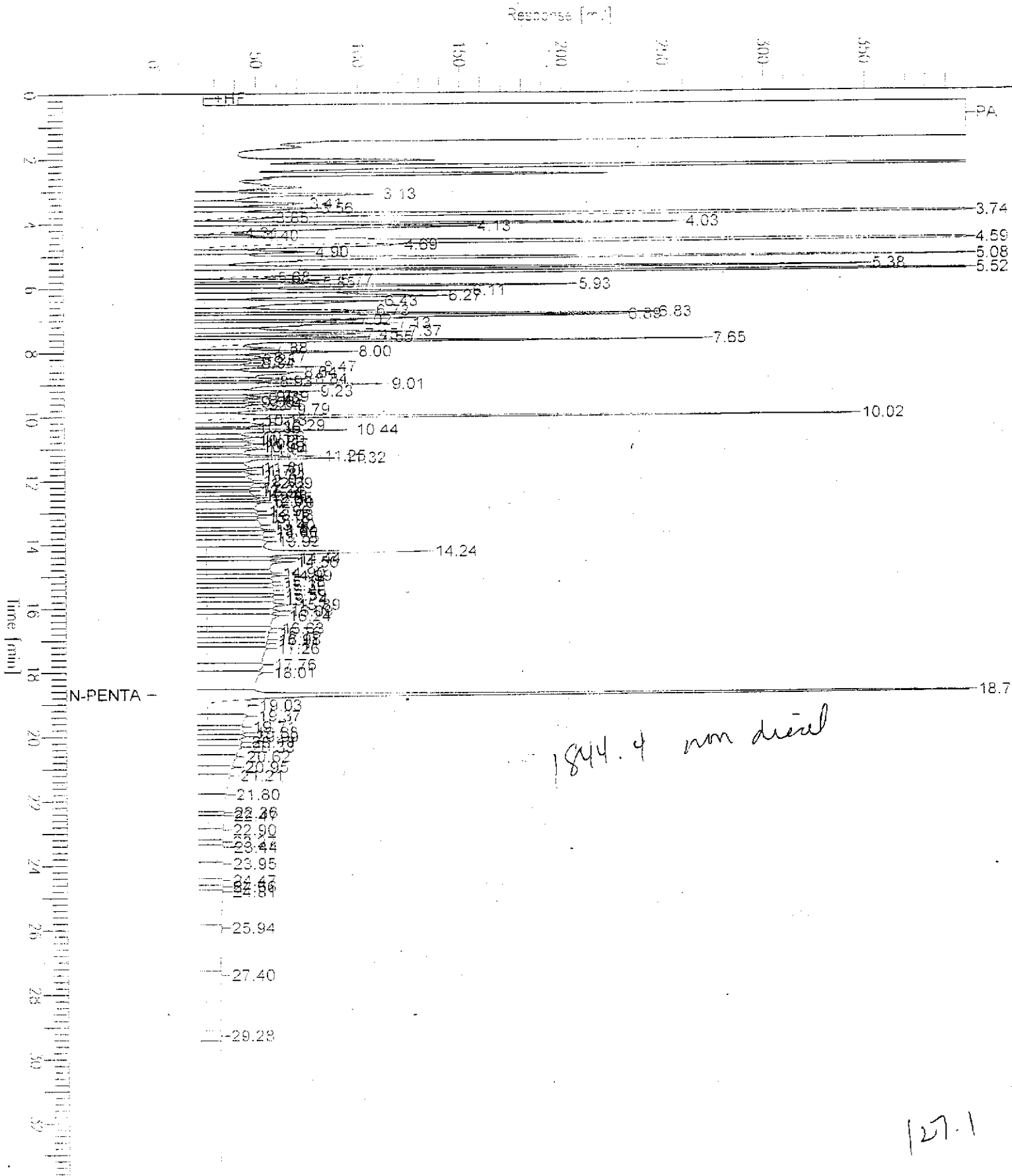
137.2



# Chromatogram

Sample Name : M912756-01 (500:1)  
FileName : C:\DATA\GHP\_04\0109\105A021.raw  
Method : TPH04A  
Start Time : 0.00 min End Time : 33.65 min  
Scale Factor: 0.0 Plot Offset: 0 mV

Sample #: MW-1  
Date : 1/6/00 09:44 AM  
Time of Injection: 1/6/00 02:28 AM  
Low Point : 0.00 mV High Point : 400.00 mV  
Plot Scale: 400.0 mV



# **Field Data Sheets**

Fax copy of Lab Report and COC to Chevron Contact:  Yes  No

**Chain-of-Custody-Record**

Chevron Products Co. P.O. BOX 6004 San Ramon, CA 94583 FAX (925)842-8370	Chevron Facility Number <u>9-0121</u>	Chevron Contact Name) <u>Brett Hunter</u>
	Facility Address <u>3026 Lakeshore Ave., Oakland</u>	(Phone) <u>(925) 842-8695</u>
	Consultant Project Number <u>991220M-2</u>	Laboratory Name <u>Sequoia</u>
	Consultant Name <u>Blaine Tech Services, Inc.</u>	Laboratory Service Order <u>9144488</u>
	Address <u>1680 Rogers Ave., San Jose</u>	Laboratory Service Code <u>ZZ02790</u>
Project Contact (Name) <u>Scott Boor</u>	Samples collected by (Name) <u>Mark N. Sorenson</u>	Signature <u>Mark N. Sorenson</u>
(Phone) <u>408-573-0555</u> (Fax) <u>408-573-7771</u>		

State Method:  CA  OR  WA  NW Series  CO  UT

Sample Number	Number of Containers	Matrix S = Soil W = Water A = Air C = Charcoal	Sample Preservation	Date/Time	State Method: <input type="checkbox"/> CA <input type="checkbox"/> OR <input type="checkbox"/> WA <input type="checkbox"/> NW Series <input type="checkbox"/> CO <input type="checkbox"/> UT															Remarks					
					BTEX/MTBE + TPH GAS (8020 + 8015)	BTEX + TPH GAS (8020 + 8015)	TPH Diesel (8015)	Oxygenates (8260)	Purgeable Halocarbons (8010)	Purgeable Organics (8270)	Extractable Organics (8270)	Oil and Grease (5520)	Metals (ICAP or AA) Cd, Cr, Pb, Zn, Ni	BTEX (8020)	BTEX/MTBE/Naph. (8020)	TPH - HCID	TPH - D Extended								
MW-1	5	W	HCL	12-20-99 1615	X		X																		Lab Sample No 01
MW-2A	5			1500	X		X																		02
MW-3A	5			1430	X		X																		03
MW-4A	5			1525	X		X																		04
MW-9	5			1550	X		X																		05
TA	2	↓	↓		X																				06

Relinquished By (Signature) <u>Scott Boor</u>	Organization <u>BTS</u>	Date/Time <u>12/21 9:36</u>	Received By (Signature) <u>[Signature]</u>	Organization <u>SA</u>	Date/Time <u>12/21 11:51</u>	Iced Y/N	Turn Around Time (Circle One) 24 Hrs. 48 Hrs. 5 Days 10 Days As Contracted
Relinquished By (Signature) <u>[Signature]</u>	Organization	Date/Time	Received By (Signature) <u>[Signature]</u>	Organization	Date/Time <u>12/21</u>	Iced Y/N	
Relinquished By (Signature)	Organization	Date/Time	Received For Laboratory By (Signature)		Date/Time	Iced Y/N	

COC-3 DWG/07-98/HCH



## CHEVRON WELL MONITORING DATA SHEET

Project #: 991220M-2	Station #: 9-0121
Sampler: Mark S.	Date: 12-20-99
Well I.D.: MW-1	Well Diameter: 2 3 <u>4</u> 6 8
Total Well Depth: 19.10	Depth to Water: 4.97
Depth to Free Product:	Thickness of Free Product (feet):
Referenced to: <u>PVC</u> Grade	D.O. Meter (if req'd): 0.76 YSI HACH

Well Diameter	Multiplier	Well Diameter	Multiplier
2"	0.16	5"	1.02
3"	0.37	6"	1.47
4"	0.65	Other	radius <sup>2</sup> * 0.163

Purge Method: Bailer      Sampling Method: Bailer  
                          Disposable Bailer      Disposable Bailer  
                          Middleburg      Extraction Port  
                          Electric Submersible      Other: \_\_\_\_\_  
                          Extraction Pump

Other: \_\_\_\_\_

9.1	x	3	=	27.3	Gals.
1 Case Volume (Gals.)		Specified Volumes		Calculated Volume	

Time	Temp (°F)	pH	Cond.	Gals. Removed	Observations
1600	67.3	7.4	<del>5350</del> 5280	10	
1602	67.2	7.4	5280	20	
1603	67.0	7.3	1350	30	
1604	67.2	7.3	1340	40	

Did well dewater?    Yes    No    Gallons actually evacuated: ~~80~~ 90

Sampling Time: 1615    Sampling Date: 12-20-99

Sample I.D.: MW-1    Laboratory: Sequoia CORE N. Creek Assoc. Labs

Analyzed for: TPH-G BTEX MTBE TPH-D Other: \_\_\_\_\_

Duplicate I.D.:    Analyzed for: TPH-G BTEX MTBE TPH-D Other: \_\_\_\_\_

D.O. (if req'd):	<u>Pre-purge</u> 0.76 mg/L	Post-purge: _____ mg/L
O.R.P. (if req'd):	Pre-purge: _____ mV	Post-purge: _____ mV

## CHEVRON WELL MONITORING DATA SHEET

Project #: <u>991220M-2</u>	Station #: <u>9-0121</u>
Sampler: <u>MARKS.</u>	Date: <u>12-20-99</u>
Well I.D.: <u>MW-2A</u>	Well Diameter: <u>(2)</u> 3 4 6 8
Total Well Depth: <u>17.50</u>	Depth to Water: <u>6.60</u>
Depth to Free Product:	Thickness of Free Product (feet):
Referenced to: <u>PVE</u> Grade	D.O. Meter (if req'd): YSI HACH

Well Diameter	Multiplier	Well Diameter	Multiplier
2"	0.16	5"	1.02
3"	0.37	6"	1.47
4"	0.65	Other	radius <sup>2</sup> * 0.165

Purge Method: <u>Bailer</u> <u>Disposable Bailer</u> Middleburg Electric Submersible Extraction Pump Other: _____	Sampling Method: <u>Bailer</u> <u>Disposable Bailer</u> Extraction Port Other: _____
--	---

<u>1.74</u>	x	<u>3</u>	=	<u>5.2</u>	Gals.
1 Case Volume (Gals.)		Specified Volumes		Calculated Volume	

Time	Temp (°F)	pH	Cond.	Gals. Removed	Observations
1440	68.5	7.4	7400	2	gray color
1445	69.7	7.3	7090	4	slight sulfur
1450	71.6	7.3	7050	6	<del>smell</del> smell

Did well dewater? Yes <input type="radio"/> No <input checked="" type="radio"/>	Gallons actually evacuated: <u>6</u>
Sampling Time: <u>1500</u>	Sampling Date: <u>12-20-99</u>
Sample I.D.: <u>MW-2A</u>	Laboratory: <u>Sequoia</u> CORE N. Creek Assoc. Labs
Analyzed for: <u>TPH-G</u> <u>BTEX</u> <u>MTBE</u> <u>TPH-D</u> Other:	
Duplicate I.D.:	Analyzed for: TPH-G BTEX MTBE TPH-D Other:
D.O. (if req'd):	Pre-purge: <u>mg/L</u> Post-purge: <u>mg/L</u>
O.R.P. (if req'd):	Pre-purge: <u>mV</u> Post-purge: <u>mV</u>

## CHEVRON WELL MONITORING DATA SHEET

Project #: 991228m-2	Station #: 9-0/21
Sampler: Mark S.	Date: 12-20-99
Well I.D.: MW-3A	Well Diameter: (2) 3 4 6 8
Total Well Depth: 18.18	Depth to Water: 8.92
Depth to Free Product:	Thickness of Free Product (feet):
Referenced to: <u>PVC</u> Grade	D.O. Meter (if req'd): YSI HACH

Well Diameter	Multiplier	Well Diameter	Multiplier
2"	0.16	5"	1.02
3"	0.37	6"	1.47
4"	0.65	Other	radius <sup>2</sup> * 0.163

Purge Method: Bailer      Sampling Method: Bailer  
Disposable Bailer      Disposable Bailer  
 Middleburg      Extraction Port  
 Electric Submersible      Other: \_\_\_\_\_  
 Extraction Pump

1.48	x	3	=	4.4	Gals.
1 Case Volume (Gals.)		Specified Volumes		Calculated Volume	

Time	Temp (°F)	pH	Cond.	Gals. Removed	Observations
1415	66.7	7.0	10.35	2	
1418	67.9	7.0	10.20	3	
1424	68.8	7.0	10.11	5	

Did well dewater? Yes  No  Gallons actually evacuated: 5

Sampling Time: 1430      Sampling Date: 12-20-99

Sample I.D.: MW-3A      Laboratory: Sequoia CORE N. Creek Assoc. Labs

Analyzed for: TPH-G BTEX MTBE TPH-D Other: \_\_\_\_\_

Duplicate I.D.:      Analyzed for: TPH-G BTEX MTBE TPH-D Other: \_\_\_\_\_

D.O. (if req'd):	Pre-purge:	mg/L	Post-purge:	mg/L
O.R.P. (if req'd):	Pre-purge:	mV	Post-purge:	mV

## CHEVRON WELL MONITORING DATA SHEET

Project #: 991220m-2	Station #: 9-0121
Sampler: Mark J.	Date: 12-20-99
Well I.D.: MW-4A	Well Diameter: <u>2</u> 3 4 6 8
Total Well Depth: 18.20	Depth to Water: 6.30
Depth to Free Product:	Thickness of Free Product (feet):
Referenced to: <u>PVC</u> Grade	D.O. Meter (if req'd): YSI HACH

Well Diameter	Multiplier	Well Diameter	Multiplier
2"	0.16	5"	1.02
3"	0.37	6"	1.47
4"	0.65	Other	radius <sup>2</sup> * 0.163

Purge Method: Bailer  
Disposable Bailer  
 Middleburg  
 Electric Submersible  
 Extraction Pump  
 Other: \_\_\_\_\_

Sampling Method: Bailer  
Disposable Bailer  
 Extraction Port  
 Other: \_\_\_\_\_

1.98	x	3	=	5.9	Gals.
1 Case Volume (Gals.)		Specified Volumes		Calculated Volume	

Time	Temp (°F)	pH	Cond.	Gals. Removed	Observations
1505	68.8	7.5	6410	2	odor
1510	69.4	7.4	6430	4	yellowish color
1514	70.4	7.4	6340	6	extremely reactive

Did well dewater? Yes  No  Gallons actually evacuated: 6

Sampling Time: 1525 Sampling Date: 12-20-99

Sample I.D.: MW-4A Laboratory: Sequoia CORE N. Creek Assoc. Labs

Analyzed for: TPH-G BTEX MTBE IPH-D Other: \_\_\_\_\_

Duplicate I.D.: Analyzed for: TPH-G BTEX MTBE TPH-D Other: \_\_\_\_\_

D.O. (if req'd):	Pre-purge:	mg/L	Post-purge:	mg/L
O.R.P. (if req'd):	Pre-purge:	mV	Post-purge:	mV



## CHEVRON WELL MONITORING DATA SHEET

Project #: 991220m-2	Station #: 9-0121
Sampler: Mark S.	Date: 12-20-99
Well I.D.: MW-9	Well Diameter: <u>(2)</u> 3 4 6 8
Total Well Depth: 16.66	Depth to Water: 4.00
Depth to Free Product:	Thickness of Free Product (feet):
Referenced to: <u>(PVC)</u> Grade	D.O. Meter (if req'd): YSI HACH

Well Diameter	Multiplier	Well Diameter	Multiplier
2"	0.16	5"	1.02
3"	0.37	6"	1.47
4"	0.65	Other	radius <sup>2</sup> * 0.163

Purge Method: Bailer  
~~Disposable Bailer~~  
 Middleburg  
 Electric Submersible  
 Extraction Pump  
 Other: \_\_\_\_\_

Sampling Method: Bailer  
Disposable Bailer  
 Extraction Port  
 Other: \_\_\_\_\_

2.0	x	3	=	6.0	Gals.
1 Case Volume (Gals.)		Specified Volumes		Calculated Volume	

Time	Temp (°F)	pH	Cond.	Gals. Removed	Observations
1530	63.2	7.4	1500	2	greyish color odor
1535	64.0	7.3	1480	4	
1540	64.5	7.3	1480	6	

Did well dewater? Yes  No  Gallons actually evacuated: 6

Sampling Time: 1550 Sampling Date: 12-20-99

Sample I.D.: MW-9 Laboratory: Sequoia CORE N. Creek Assoc. Labs

Analyzed for: (TPH-G) (BTEX) (MTBE) (TPH-D) Other: \_\_\_\_\_

Duplicate I.D.: Analyzed for: TPH-G BTEX MTBE TPH-D Other: \_\_\_\_\_

D.O. (if req'd):	Pre-purge:	mg/L	Post-purge:	mg/L
O.R.P. (if req'd):	Pre-purge:	mV	Post-purge:	mV