

ENVIRONMENTAL  
PROTECTION



**Chevron**

99 DEC 14 PM 2:12

Chevron U.S.A. Products Company  
6001 Sailing Canyon Rd. Bldg. L  
P. O. Box 6004  
San Ramon, CA 94583-0604

Site Assessment and  
Remediation Group  
Phone (510) 842-8500  
Fax (510) 842-3370

Date: December 2, 1999  
To: Distribution  
Re: Groundwater Monitoring Report, 9-0121

The enclosed groundwater monitoring report has been properly reviewed by a Chevron authorized representative. Agency guidelines have been followed. Blaine Tech Services is authorized to distribute the report directly to interested parties.

If you have any questions, please call me at (510) 842-3695.

Sincerely,

Brett Hunter  
Site Assessment and Remediation  
Project Manager

12/15/99

Well MW-2 has high MTBE. But  
plume looks localized, around tank  
complex.

**BLAINE**  
TECH SERVICES INC.



1680 ROGERS AVENUE  
SAN JOSE, CALIFORNIA 95112-1105  
(408) 573-7771 FAX  
(408) 573-0555 PHONE

December 1, 1999

Brett Hunter  
Chevron U.S.A. Products Company  
P.O. Box 6004  
San Ramon, CA 94583-0904

### 3rd Quarter 1999 Monitoring at 9-0121

Third Quarter 1999 Groundwater Monitoring at  
Chevron Service Station Number 9-0121  
3026 Lakeshore Avenue  
Oakland, CA

Monitoring Performed on September 17, 1999

---

### Groundwater Sampling Report 990917-C-2

This report covers the routine monitoring of groundwater wells at this Chevron facility. Blaine Tech Services, Inc.'s work at the site includes inspection, gauging, evacuation, purgewater containment, sample collection and sample handling in accordance with standard procedures that conform to Regional Water Quality Control Board requirements.

Routine field data collection includes depth to water, total well depth, thickness of any separate immiscible layer, water column volume, calculated volume of a three-case volume purge, elapsed evacuation time, total volume of water removed, and standard water parameter instrument readings. Sample material is collected, contained, stored, and transported to the laboratory in conformance with EPA standards. Purgewater is, likewise, collected and transported to McKittrick Waste Treatment Site for disposal.

Basic field information is presented alongside analytical values excerpted from the laboratory report in the cumulative table of **WELL DATA AND ANALYTICAL RESULTS**. The full analytical report for the most recent samples is located in the **Analytical Appendix**. The table also contains new groundwater elevation calculations taken from the computer plotted gradient

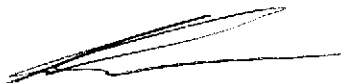
map which is located in the **Professional Engineering Appendix**.

At a minimum, Blaine Tech Services, Inc. field personnel are certified upon completion of a forty-hour Hazardous Materials and Emergency Response training course per 29 CFR 1910.120. Field personnel are also enrolled in annual eight hour refresher courses.

Blaine Tech Services, Inc. conducts sampling and documentation assignments of this type as an independent third party. In order to avoid compromising the objectivity necessary for the proper and disinterested performance of this work, Blaine Tech Services, Inc. concentrates on objective data collection and does not participate in the interpretation of analytical results, the definition of geological or hydrological conditions, the formulation of recommendations, or the marketing of remedial systems.

Please call if you have any questions.

Yours truly,



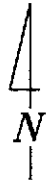
Scott Boor  
Project Coordinator

SDB/jh

attachments: Professional Engineering Appendix  
Cumulative Table of Well Data and Analytical Results  
Analytical Appendix  
Field Data Sheets

cc: **Eva Chu, Alameda County Health Services**  
Greg Gurrss, Gettler-Ryan, Inc.  
Bill Scudder, Chevron (w/o enclosure)

# **Professional Engineering Appendix**



SCALE (ft)



EXPLANATION

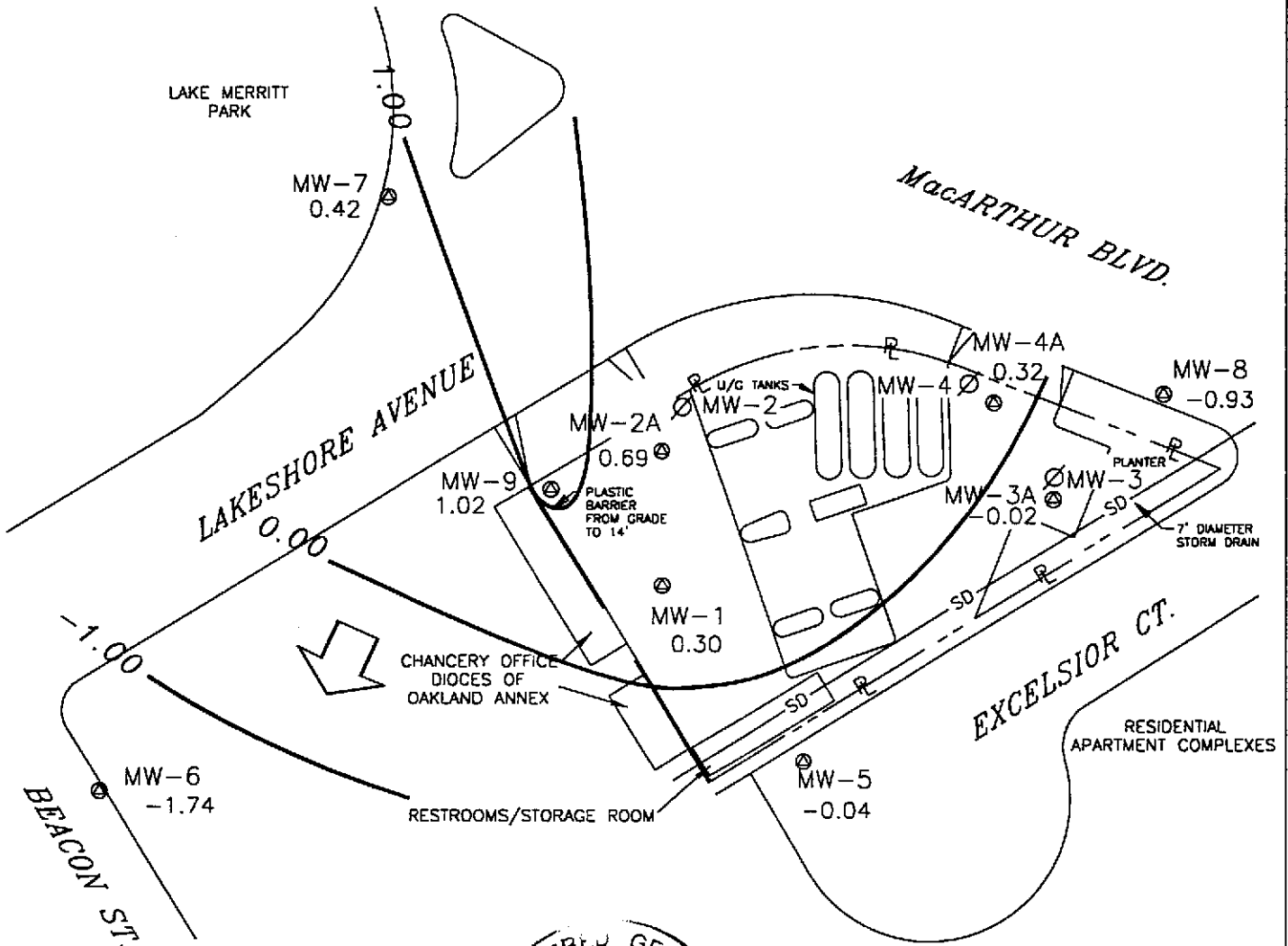
⊙ MONITORING WELL LOCATION

∅ DESTROYED WELL LOCATION

0.42 GROUNDWATER ELEVATION (FT, MSL)

1.00 — GROUNDWATER ELEVATION CONTOUR (FT, MSL)

⇨ APPROXIMATE GROUNDWATER FLOW DIRECTION;  
APPROXIMATE GRADIENT = 0.02



Basemap from Geoconsultants, Inc.

PREPARED BY

**RRM**

engineering contracting firm

**Chevron Station 9-0121**  
3026 Lakeshore Avenue  
Oakland, California

**GROUNDWATER ELEVATION CONTOUR MAP,**  
**SEPTEMBER 17, 1999**

FIGURE:

1

PROJECT:

DAC04

# **Table of Well Data and Analytical Results**

## Cumulative Table of Well Data and Analytical Results

Vertical Measurements are in feet.

Volumetric Measurements are in gallons.

Analytical results are in parts per billion (ppb)

DATE	Well Head Elev.	Ground Water Elev.	Depth To Water	SPH Thickness	SPH Removed	Total SPH Removed	Notes	TPH-Gasoline	Benzene	Toluene	Ethyl-Benzene	Xylene	TPH-Diesel	TDS	MTBE
<b>MW-1</b>															
08/20/91	6.82	1.62	5.20	--	--	--	--	5100	1700	21	220	34	260	--	--
09/30/91	6.82	1.15	5.67	Sheen	--	--	--	--	--	--	--	--	--	--	--
10/28/91	6.82	1.50	5.30	0.03	--	--	--	--	--	--	--	--	--	--	--
01/08/92	6.82	1.67	5.15	Sheen	--	--	--	5400	770	13	95	31	4400	--	--
01/13/92	6.82	--	--	--	--	--	--	--	--	--	--	--	--	--	--
06/23/92	6.89	1.48	5.41	--	--	--	--	7700	1500	40	230	100	2000	--	--
08/24/92	6.89	1.12	5.77	--	--	--	--	--	--	--	--	--	--	--	--
09/21/92	6.89	1.00	5.89	--	--	--	--	3500	1700	28	190	78	<50	--	--
10/26/92	6.89	0.95	5.94	--	--	--	--	--	--	--	--	--	--	--	--
12/23/92	6.89	2.18	4.71	--	--	--	--	60,000	7100	240	2000	1300	5500	--	--
01/08/93	6.89	--	--	--	--	--	--	--	--	--	--	--	--	--	--
03/25/93	6.89	2.17	4.72	--	--	--	--	530	1100	41	67	79	<10	--	--
06/11/93	6.89	5.37	5.07	--	--	--	--	7000	1900	33	120	69	--	840	9600
09/25/93	6.89	1.13	5.76	--	--	--	--	6600	1600	28	43	74	<10	--	--
12/20/93	6.89	1.74	5.15	--	--	--	--	6300	1900	36	82	65	<10	--	--
03/07/94	6.89	2.21	4.68	--	--	--	--	7700	1100	55	66	38	<10	--	12,000
06/17/94	6.89	1.83	5.06	--	--	--	--	4300	710	12	90	38	2200	--	--
09/12/94	6.89	1.24	5.65	--	--	--	--	6400	1500	<25	180	<25	2500	--	12,000
11/30/94	6.89	2.32	4.57	--	--	--	--	4900	690	26	97	60	2300*	--	3900
03/24/95	6.89	3.91	2.98	--	--	--	--	1800	160	7.3	11	14	1400**	--	1300
06/27/95	6.89	1.87	5.02	--	--	--	--	4600	1300	11	97	13	2300**	--	5100
09/28/95	6.89	1.59	5.30	--	--	--	--	6600	1500	<20	<20	<20	3900**	--	5800
12/19/95	6.89	2.21	4.68	--	--	--	--	3800	930	<10	100	<10	2600**	--	6300
02/28/96	6.89	3.27	3.62	--	--	--	--	3600	280	<5.0	18	5.5	1800**	--	2200
06/25/96	6.89	1.87	5.02	--	--	--	--	4700	1600	36	150	31	3000	--	3000
12/17/96	6.89	2.23	4.66	--	--	--	--	7800	1000	28	340	63	2700***	--	1200
03/31/97	6.89	2.01	4.88	--	--	--	--	5300	590	55	210	53	2200**	--	950
06/30/97	6.89	1.32	5.57	--	--	--	--	4400	350	<10	<10	11	2200**	--	580
09/12/97	6.89	1.56	5.33	--	--	--	--	3400	220	9.5	15	11	2300**	--	460
12/05/97	6.89	2.44	4.45	--	--	--	--	4700	870	21	120	18	1900**	--	750
02/16/98	6.89	3.52	3.37	--	--	--	--	4400	120	12	11	7.7	1600**	--	270
06/17/98	6.89	2.24	4.65	--	--	--	--	7800	<25	50	34	650	1300**	--	650
08/31/98	6.89	1.70	5.19	--	--	--	--	3700	620	17	120	31	2400**	--	380
12/28/98	6.89	1.94	4.95	--	--	--	+	3800	250	14	28	15	1500**	--	330

CONTINUED ON NEXT PAGE

\* Chromatogram pattern indicates a non-diesel mix.

\*\* Chromatogram pattern indicates an unidentified hydrocarbon.

\*\*\* Chromatogram pattern indicates an unidentified hydrocarbon and weathered diesel.

† See Table of Additional Analyses.

## Cumulative Table of Well Data and Analytical Results

Vertical Measurements are in feet.			Volumetric Measurements are in gallons.				Analytical results are in parts per billion (ppb)								
DATE	Well Head Elev.	Ground Water Elev.	Depth To Water	SPH Thickness	SPH Removed	Total SPH Removed	Notes	TPH-Gasoline	Benzene	Toluene	Ethyl-Benzene	Xylene	TPH-Diesel	TDS	MTBE
<b>MW-1 (CONT'D)</b>															
03/04/99	6.89	3.24	3.65	--	--	--	--	1560	17.9	<0.5	4.17	1.05	1070**	--	70.4
06/14/99	6.89	1.89	5.00	--	--	--	--	<10,000	820	240	320	640	2500**	--	<500
09/17/99	6.89	0.30	6.59	--	--	--	--	3300	141	12.3	<10	<10	2110**	--	238

\*\* Chromatogram pattern indicates an unidentified hydrocarbon.



## Cumulative Table of Well Data and Analytical Results

Vertical Measurements are in feet.

Volumetric Measurements are in gallons.

Analytical results are in parts per billion (ppb)

DATE	Well Head Elev.	Ground Water Elev.	Depth To Water	SPH Thickness	SPH Removed	Total SPH Removed	Notes	TPH-Gasoline	Benzene	Toluene	Ethyl-Benzene	Xylene	TPH-Diesel	TDS	MTBE
<b>MW-2</b>															
08/20/91	6.27	1.92	4.35	--	--	--	--	9300	3700	55	530	75	600	--	--
09/30/91	6.27	1.28	4.99	--	--	--	--	3500	2600	47	440	68	--	--	--
10/28/91	6.27	1.36	4.91	--	--	--	--	4600	1800	29	290	53	--	--	--
01/08/92	6.27	1.63	4.64	Sheen	--	--	--	14,000	4300	70	<25	130	--	--	--
01/13/92	6.27	--	--	--	--	--	--	--	--	--	--	--	38,000	--	--
06/23/92	6.27	1.63	4.64	0.02	--	--	--	--	--	--	--	--	--	--	--
08/24/92	6.27	1.34	4.94	0.02	--	--	--	--	--	--	--	--	--	--	--
09/21/92	6.27	1.20	5.08	0.01	--	--	--	--	--	--	--	--	--	--	--
10/26/92	6.27	0.34	5.93	--	--	--	--	--	--	--	--	--	--	--	--
12/23/92	6.27	--	--	--	--	--	--	21,000	5400	59	1300	160	160,000	--	--
01/08/93	6.27	2.57	3.70	--	--	--	--	--	--	--	--	--	--	--	--
03/25/93	6.27	2.89	3.38	Sheen	--	--	--	--	--	--	--	--	--	--	--
06/11/93	6.27	2.09	4.18	--	--	--	--	5900	1100	23	240	51	--	2300	--
09/25/93	6.27	0.07	6.20	--	--	--	--	--	--	--	--	--	--	--	--
12/20/93	6.27	1.94	4.35	0.02	--	--	--	--	--	--	--	--	--	--	--
03/07/94	6.27	2.60	3.67	--	--	--	--	26,000	5700	170	1000	150	<10	--	--
06/17/94	6.27	2.25	4.02	Sheen	--	--	--	--	--	--	--	--	--	--	--
09/12/94	6.27	1.45	4.83	0.01	--	--	--	--	--	--	--	--	--	--	--
11/30/94	6.27	2.27	4.00	--	--	--	Inaccessible	--	--	--	--	--	--	--	--
03/24/95	6.27	2.73	4.01	0.59	--	--	--	--	--	--	--	--	--	--	--
05/27/95	6.27	1.71	4.96	0.50	0.013	0.013	--	--	--	--	--	--	--	--	--
09/28/95	6.27	2.62	4.25	0.75	0.013	0.026	--	--	--	--	--	--	--	--	--
12/19/95	6.27	1.99	4.76	0.60	0.010	0.036	--	--	--	--	--	--	--	--	--
03/28/96	6.27	1.99	4.58	0.38	0.008	0.044	--	--	--	--	--	--	--	--	--
06/25/96	6.27	2.36	4.29	0.47	0.030	0.074	--	--	--	--	--	--	--	--	--
12/17/96	6.27	2.22	4.16	0.14	--	0.074	--	--	--	--	--	--	--	--	--
03/31/97	6.27	2.34	4.07	0.18	0.030	0.104	--	--	--	--	--	--	--	--	--
06/30/97	6.27	2.06	4.32	0.14	0.030	0.134	--	--	--	--	--	--	--	--	--
09/12/97	6.27	2.00	4.38	0.14	--	0.134	--	--	--	--	--	--	--	--	--
12/05/97	6.27	2.51	3.78	0.02	--	0.134	--	--	--	--	--	--	--	--	--
02/16/98	6.27	3.08	3.29	0.12	0.007	0.141	--	--	--	--	--	--	--	--	--
06/17/98	6.27	2.35	4.00	0.10	0.010	0.151	--	--	--	--	--	--	--	--	--
08/31/98	6.27	0.65	5.71	0.11	0.008	0.159	--	--	--	--	--	--	--	--	--
12/28/98	6.27	1.75	4.60	0.10	0.005	0.164	--	--	--	--	--	--	--	--	--
03/04/99	6.27	2.58	3.73	0.05	0.200	0.364	--	--	--	--	--	--	--	--	--

NO LONGER MONITORED OR SAMPLED

## Cumulative Table of Well Data and Analytical Results

Vertical Measurements are in feet.

Volumetric Measurements are in gallons.

Analytical results are in parts per billion (ppb)

DATE	Well Head Elev.	Ground Water Elev.	Depth To Water	SPH Thickness	SPH Removed	Total SPH Removed	Notes	TPH- Gasoline	Benzene	Toluene	Ethyl- Benzene	Xylene	TPH- Diesel	TDS	MTBE
<b>MW-2A</b>															
04/19/99	6.53	1.67	4.86	--	--	--	--	<2000	<20	<20	<20	<20	820*	--	9200
06/14/99	6.53	1.23	5.30	--	--	--	--	<5000	89	<50	66	<50	2000*	--	10,000
09/17/99	6.53	0.69	5.84	--	--	--	--	903	42	1.63	22.8	7.74	1050*	--	11,400

\* Chromatogram pattern indicates an unidentified hydrocarbon.

## Cumulative Table of Well Data and Analytical Results

Vertical Measurements are in feet.

Volumetric Measurements are in gallons.

Analytical results are in parts per billion (ppb)

DATE	Well Head Elev.	Ground Water Elev.	Depth To Water	SPH Thickness	SPH Removed	Total SPH Removed	Notes	TPH-Gasoline	Benzene	Toluene	Ethyl-Benzene	Xylene	TPH-Diesel	TDS	MTBE
<b>MW-3</b>															
09/20/91	8.71	0.26	8.45	--	--	--	--	3100	200	13	15	12	200	--	--
09/30/91	8.71	-0.03	8.74	--	--	--	--	1000	150	8.3	13	6.7	--	--	--
10/28/91	8.71	-0.05	8.76	--	--	--	--	1200	120	6.7	11	7.5	--	--	--
01/08/92	8.71	-0.06	8.77	--	--	--	--	410	120	0.9	4.1	3.4	--	--	--
01/13/92	8.71	--	--	--	--	--	--	--	--	--	--	--	220	--	--
05/23/92	8.71	0.03	8.68	--	--	--	--	630	43	0.8	8.2	3.4	<50	--	--
06/24/92	8.71	-0.14	8.85	--	--	--	--	--	--	--	--	--	--	--	--
09/21/92	8.71	-0.23	8.94	--	--	--	--	1800	730	1.4	66	39	<50	--	--
10/26/92	8.71	-0.36	9.07	--	--	--	--	--	--	--	--	--	--	--	--
12/23/92	8.71	--	--	--	--	--	--	840	270	3.4	15	4.2	850	--	--
01/08/93	8.71	1.02	7.69	--	--	--	--	--	--	--	--	--	--	--	--
03/25/93	8.71	0.97	7.74	--	--	--	--	760	270	4.0	10	5.0	<10	--	--
06/11/93	8.71	0.19	8.52	--	--	--	--	200	32	1.0	5.0	2.0	--	5600	--
09/29/93	8.71	2.66	6.05	--	--	--	--	9300	2800	60	270	62	--	--	--
12/20/93	8.71	-0.12	8.83	--	--	--	--	460	250	4.0	8.0	4.0	<10	--	--
03/07/94	8.71	0.64	8.07	--	--	--	--	2400	260	13	35	18	<10	--	--
06/17/94	8.71	0.19	8.52	--	--	--	--	1000	200	4.0	6.6	6.7	<50	--	--
09/12/94	8.71	-0.21	8.92	--	--	--	--	360	130	3.4	4.8	3.3	<50	--	130
11/30/94	8.71	0.58	8.13	--	--	--	Inaccessible	--	--	--	--	--	--	--	--
03/24/95	8.71	1.93	6.78	--	--	--	--	4100	920	<10	23	<10	1200*	--	70
06/27/95	8.71	0.49	8.22	--	--	--	--	3100	640	16	31	<10	1000*	--	<50
09/28/95	8.71	-0.14	8.85	--	--	--	--	490	78	3.4	4.4	2.4	460*	--	38
12/19/95	8.71	0.69	8.02	--	--	--	--	2600	580	<10	25	<10	650*	--	<50
02/28/96	8.71	1.16	7.55	--	--	--	--	1500	510	<5.0	9.9	<5.0	780*	--	<25
06/25/96	8.71	0.34	8.37	--	--	--	--	1300	390	7.8	14	6.5	1200*	--	31
12/17/96	8.71	0.41	8.30	--	--	--	--	760	85	<1.2	5.9	5.1	1100*	--	<6.2
03/31/97	8.71	0.52	8.19	--	--	--	--	2000	380	12	24	12	1300*	--	<25
06/30/97	8.71	0.00	8.71	--	--	--	--	1900	340	9.9	23	6.1	620*	--	<25
09/12/97	8.71	1.07	7.64	--	--	--	--	1200	200	4.6	14	4.8	400*	--	3.9
12/05/97	8.71	0.46	8.25	--	--	--	--	460	72	2.7	5.2	1.7	190*	--	<5.0
02/16/98	8.71	1.71	7.00	--	--	--	--	6200	1100	20	34	12	1000*	--	<50
06/17/98	8.71	0.71	8.00	--	--	--	--	3000	350	<10	<10	<10	1100*	--	120
08/31/98	8.71	0.08	8.63	--	--	--	--	430	100	2.6	8.6	6.0	790*	--	<12
12/28/98	8.71	-0.02	8.73	--	--	--	+	1400	220	<10	12	<10	180*	--	<50
03/04/99	8.71	1.06	7.65	--	--	--	--	2880	355	9.15	19	<5.0	763*	--	<20

NO LONGER MONITORED OR SAMPLED

\* Chromatogram pattern indicates an unidentified hydrocarbon.

+ See Additional Analyses.

### Cumulative Table of Well Data and Analytical Results

Vertical Measurements are in feet.				Volumetric Measurements are in gallons.				Analytical results are in parts per billion (ppb)							
DATE	Well Head Elev.	Ground Water Elev.	Depth To Water	SPH Thickness	SPH Removed	Total SPH Removed	Notes	TPH- Gasoline	Benzene	Toluene	Ethyl- Benzene	Xylene	TPH- Diesel	TDS	MTBE
<b>MW-3A</b>															
01/19/99	8.70	1.00	7.70	--	--	--	--	<50	<0.5	<0.5	<0.5	<0.5	93*	--	3.1
06/14/99	8.70	0.50	8.20	--	--	--	--	148	4.55	0.82	0.53	1.1	160*	--	3.7
09/17/99	8.70	-0.02	8.72	--	--	--	--	169	6.02	0.806	0.515	0.786	101*	--	4.68

\* Chromatogram pattern indicates an unidentified hydrocarbon.

## Cumulative Table of Well Data and Analytical Results

Vertical Measurements are in feet.				Volumetric Measurements are in gallons.				Analytical results are in parts per billion (ppb)							
DATE	Well Head Elev.	Ground Water Elev.	Depth To Water	SPH Thickness	SPH Removed	Total SPH Removed	Notes	TPH Gasoline	Benzene	Toluene	Ethyl-Benzene	Xylene	TPH-Diesel	TDS	MTBE
<b>MW-4</b>															
08/20/91	7.37	1.32	5.05	--	--	--	--	1800	870	4.0	3.0	9.0	160	--	--
09/30/91	7.37	1.70	5.67	--	--	--	--	670	830	5.5	2.7	12	--	--	--
10/28/91	7.37	1.56	5.81	--	--	--	--	2800	990	5.8	4.8	19	--	--	--
01/08/92	7.37	2.03	5.34	--	--	--	--	2900	1200	10	7.0	18	--	--	--
01/13/92	7.37	--	--	--	--	--	--	--	--	--	--	--	1000	--	--
06/23/92	7.37	2.00	5.37	--	--	--	--	1600	380	6.5	3.0	12	<50	--	--
08/24/92	7.37	1.62	5.75	--	--	--	--	--	--	--	--	--	--	--	--
09/21/92	7.37	1.42	5.95	--	--	--	--	1200	480	5.6	3.7	11	<50	--	--
10/26/92	7.37	1.41	5.96	--	--	--	--	--	--	--	--	--	--	--	--
12/23/92	7.37	--	--	--	--	--	--	1500	700	3.6	3.2	11	1800	--	--
01/08/93	7.37	2.73	4.64	--	--	--	--	--	--	--	--	--	--	--	--
03/25/93	7.37	2.95	4.42	--	--	--	--	520	160	3.0	1.0	4.0	<10	--	--
06/11/93	7.37	2.25	5.12	--	--	--	--	1200	430	5.0	6.0	11	--	2600	--
09/29/93	7.37	1.57	5.80	--	--	--	--	1300	210	8.0	2.0	14	--	--	--
12/20/93	7.37	2.27	5.10	--	--	--	--	570	230	5.0	4.0	8.0	3900	--	--
03/07/94	7.37	2.36	5.01	--	--	--	--	2200	290	18	2.5	11	2600	--	22,000
06/17/94	7.37	1.55	5.82	--	--	--	--	2100	480	11	4.3	9.5	2800	--	--
09/12/94	7.37	1.73	5.64	--	--	--	--	1700	340	6.1	2.7	9.7	3000	--	63,000
11/30/94	7.37	1.79	5.58	--	--	--	Inaccessible	--	--	--	--	--	--	--	--
03/24/95	7.37	2.42	4.95	--	--	--	--	1500	280	<5.0	<5.0	6.9	3000*	--	12,000
06/27/95	7.37	-1.42	8.79	--	--	--	--	<10,000	310	<100	<100	<100	3100*	--	32,000
09/28/95	7.37	1.52	5.85	--	--	--	--	330	64	1.1	<0.5	<0.5	6300*	--	630
12/19/95	7.37	1.87	5.50	--	--	--	--	3000	520	<25	<25	<25	3400*	--	44,000
02/28/96	7.37	2.27	5.10	--	--	--	--	<10,000	230	<100	<100	<100	4700*	--	32,000
06/25/96	7.37	1.59	5.78	--	--	--	--	<10,000	160	<100	<100	<100	3100	--	31,000
12/17/96	7.37	1.42	5.95	--	--	--	--	<5000	110	<50	<50	<50	3600**	--	22,000
03/31/97	7.37	1.75	5.62	--	--	--	--	<2500	130	<25	<25	<25	2700*	--	16,000
06/30/97	7.37	1.34	6.03	--	--	--	--	<2500	130	<25	<25	<25	2700*	--	14,000
09/12/97	7.37	1.68	5.69	--	--	--	--	<5000	63	<50	<50	<50	2100*	--	15,000
12/05/97	7.37	2.22	5.15	--	--	--	--	1300	120	<5.0	<5.0	8.5	2600*	--	15,000
02/16/98	7.37	1.11	6.26	--	--	--	--	1200	57	4.5	<2.5	7.0	1300*	--	12,000
06/17/98	7.37	2.41	4.96	--	--	--	--	5300	390	290	28	150	530*	--	17,000
08/31/98	7.37	1.46	5.91	--	--	--	--	<50	89	<0.5	<0.5	<0.5	2400*	--	14,000
08/31/98	7.37	1.46	5.91	--	--	--	Confirmation run	--	--	--	--	--	--	--	16,000
12/28/98	7.37	1.96	5.41	--	--	--	+	1000	52	5.6	4.6	9.1	2900*	--	8400
03/04/99	7.37	2.17	5.20	--	--	--	--	<2500	85.5	40.9	<25	<25	4490*	--	11,400

NO LONGER MONITORED OR SAMPLED

\* Chromatogram pattern indicates an unidentified hydrocarbon.

\*\* Chromatogram pattern indicates an unidentified hydrocarbon and weathered diesel.

† See Additional Analyses.

## Cumulative Table of Well Data and Analytical Results

Vertical Measurements are in feet.				Volumetric Measurements are in gallons.				Analytical results are in parts per billion (ppb)							
DATE	Well Head Elev.	Ground Water Elev.	Depth To Water	SPH Thickness	SPH Removed	Total SPH Removed	Notes	TPH- Gasoline	Benzene	Toluene	Ethyl- Benzene	Xylene	TPH- Diesel	TDS	MTBE
<b>MW-4A</b>															
04/19/99	7.69	2.78	4.91	--	--	--	--	<500	<5.0	<5.0	<5.0	<5.0	370*	--	1600
05/14/99	7.69	2.44	5.25	--	--	--	--	5360	312	<20	44	<20	2500*	--	2880
09/17/99	7.69	0.32	7.37	--	--	--	--	1290	38.6	<5.0	7.01	<5.0	1430*	--	1780

\* Chromatogram pattern indicates an unidentified hydrocarbon.

## Cumulative Table of Well Data and Analytical Results

Vertical Measurements are in feet.				Volumetric Measurements are in gallons.			Analytical results are in parts per billion (ppb)								
DATE	Well Head Elev.	Ground Water Elev.	Depth To Water	SPH Thickness	SPH Removed	Total SPH Removed	Notes	TPH-Gasoline	Benzene	Toluene	Ethyl-Benzene	Xylene	TPH-Diesel	TDS	MTBE
<b>MW-5</b>															
06/23/92	14.14	1.90	12.24	--	--	--	--	<50	<0.5	<0.5	<0.5	<0.5	<50	--	--
08/24/92	14.14	1.85	12.29	--	--	--	--	--	--	--	--	--	--	--	--
09/21/92	14.14	1.68	12.46	--	--	--	--	<50	<0.5	<0.5	<0.5	<0.5	60	--	--
10/26/92	14.14	1.62	12.52	--	--	--	--	--	--	--	--	--	--	--	--
12/23/92	14.14	3.02	11.12	--	--	--	--	--	--	--	--	--	--	--	--
01/08/93	14.14	--	--	--	--	--	--	--	--	--	--	--	--	--	--
03/25/93	14.14	4.40	9.74	--	--	--	--	<50	<0.5	<0.5	<0.5	0.9	<10	--	--
06/11/93	14.14	3.70	10.44	--	--	--	--	<50	<0.5	<0.5	<0.5	<0.5	--	770	--
09/29/93	14.14	2.22	11.92	--	--	--	--	<50	<0.5	0.6	<0.5	0.6	<10	--	--
12/20/93	14.14	--	--	--	--	--	--	--	--	--	--	--	--	--	--
03/07/94	14.14	2.80	11.34	--	--	--	--	<50	<0.5	<0.5	<0.5	<0.5	<10	--	--
06/17/94	14.14	2.87	11.27	--	--	--	--	<50	<0.5	<0.5	<0.5	<0.5	<50	--	--
09/12/94	14.14	1.28	12.86	--	--	--	--	<50	<0.5	<0.5	<0.5	<0.5	<50	--	<5.0
11/30/94	14.14	2.23	11.91	--	--	--	--	<50	<0.5	<0.5	<0.5	<0.5	99*	--	--
03/24/95	14.14	4.38	9.76	--	--	--	--	<50	<0.5	<0.5	<0.5	<0.5	<50	--	--
06/27/95	14.14	2.74	11.40	--	--	--	--	<50	<0.5	<0.5	<0.5	<0.5	55**	--	--
09/28/95	14.14	2.24	11.90	--	--	--	--	<50	<0.5	<0.5	<0.5	<0.5	300**	--	--
12/19/95	14.14	1.56	12.58	--	--	--	--	<50	<0.5	<0.5	<0.5	<0.5	53**	--	3.1
03/28/96	14.14	2.44	11.70	--	--	--	--	<50	<0.5	<0.5	<0.5	<0.5	<50	--	<2.5
06/25/96	14.14	2.71	11.43	--	--	--	--	<50	<0.5	<0.5	<0.5	<0.5	120**	--	36
12/17/96	14.14	2.74	11.40	--	--	--	--	<50	<0.5	<0.5	<0.5	<0.5	89**	--	<2.5
03/31/97	14.14	2.04	12.10	--	--	--	--	<50	<0.5	<0.5	<0.5	<0.5	150**	--	<2.5
06/30/97	14.14	1.36	12.78	--	--	--	Sampled biannually	--	--	--	--	--	--	--	--
09/12/97	14.14	0.46	13.68	--	--	--	--	<50	<0.5	<0.5	<0.5	<0.5	<50	--	<2.5
12/05/97	14.14	1.11	13.03	--	--	--	--	--	--	--	--	--	--	--	--
02/16/98	14.14	4.17	9.97	--	--	--	--	<50	<0.5	<0.5	<0.5	<0.5	62**	--	<2.5
06/17/98	14.14	2.29	11.85	--	--	--	--	--	--	--	--	--	--	--	--
08/31/98	14.14	1.32	12.82	--	--	--	--	<50	<0.5	<0.5	<0.5	<0.5	<50	--	<2.5
12/28/98	14.14	0.71	13.43	--	--	--	+	--	--	--	--	--	--	--	--
03/04/99	14.14	0.39	13.75	--	--	--	--	<50	<0.5	<0.5	<0.5	<0.5	70.5	--	3.34
06/14/99	14.14	0.04	14.10	--	--	--	--	--	--	--	--	--	--	--	--
09/17/99	14.14	-0.04	14.18	--	--	--	--	<50	<0.5	<0.5	<0.5	<0.5	<50	--	<2.5

\* Chromatogram pattern indicates an unidentified hydrocarbon.

\*\* Chromatogram pattern indicates an unidentified hydrocarbon and weathered diesel.

+ See Additional Analyses.

## Cumulative Table of Well Data and Analytical Results

Vertical Measurements are in feet.				Volumetric Measurements are in gallons.				Analytical results are in parts per billion (ppb)							
DATE	Well Head Elev.	Ground Water Elev.	Depth To Water	SPH Thickness	SPH Removed	Total SPH Removed	Notes	TPH-Gasoline	Benzene	Toluene	Ethyl-Benzene	Xylene	TPH-Diesel	TDS	MTBE
<b>MW-6</b>															
06/23/92	4.46	-0.68	5.14	--	--	--	--	<50	4.3	<0.5	0.8	0.9	120	--	--
08/24/92	4.46	-0.49	4.95	--	--	--	--	--	--	--	--	--	--	--	--
09/21/92	4.46	-0.44	4.90	--	--	--	--	<250	<2.5	<2.5	<2.5	<2.5	<50	--	--
10/26/92	4.46	-1.06	5.52	--	--	--	--	--	--	--	--	--	--	--	--
12/23/92	4.46	-0.94	5.40	--	--	--	--	<50	<0.5	<0.5	<0.5	<0.5	81	--	--
01/08/93	4.46	--	--	--	--	--	--	--	--	--	--	--	--	--	--
03/25/93	4.46	-1.64	6.10	--	--	--	--	<50	<0.5	<0.5	<0.5	0.7	<10	--	--
06/11/93	4.46	-2.10	6.56	--	--	--	--	<50	<0.5	<0.5	<0.5	<0.5	--	15,000	--
09/29/93	4.46	-0.71	5.17	--	--	--	--	<50	<0.5	<0.5	<0.5	<0.5	<10	--	--
12/20/93	4.46	-1.47	5.93	--	--	--	--	<50	<0.5	<0.5	<0.5	<0.5	<10	--	--
03/07/94	4.46	-0.81	5.27	--	--	--	--	54	<0.5	<0.5	<0.5	0.6	<10	--	--
06/17/94	4.46	--	--	--	--	--	--	--	--	--	--	--	--	--	--
09/12/94	4.46	-0.64	5.10	--	--	--	--	<50	<0.5	<0.5	<0.5	<0.5	<50	--	<50
11/30/94	4.46	-1.12	5.58	--	--	--	--	<50	<0.5	<0.5	<0.5	<0.5	800*	--	--
03/24/95	4.46	-1.87	6.33	--	--	--	--	<50	<0.5	<0.5	<0.5	<0.5	490**	--	--
06/27/95	4.46	-3.74	8.20	--	--	--	--	<50	<0.5	<0.5	<0.5	<0.5	300**	--	--
09/28/95	4.46	-0.19	4.65	--	--	--	--	120	1.1	<0.5	<0.5	<0.5	1200**	--	--
12/19/95	4.46	-1.58	6.04	--	--	--	--	<50	<0.5	<0.5	<0.5	<0.5	820**	--	<2.5
12/28/95	4.46	-1.54	6.00	--	--	--	--	<50	<0.5	<0.5	<0.5	<0.5	270**	--	<2.5
06/25/96	4.46	-1.71	6.17	--	--	--	--	97	<0.5	<0.5	<0.5	0.71	750**	--	<2.5
12/17/96	4.46	-1.67	6.13	--	--	--	--	65	<0.5	<0.5	<0.5	<0.5	540**	--	<2.5
03/31/97	4.46	-2.23	6.69	--	--	--	--	65	<0.5	<0.5	<0.5	<0.5	780**	--	<2.5
08/30/97	4.46	-2.62	7.08	--	--	--	Sampled biannually	--	--	--	--	--	--	--	--
09/12/97	4.46	-0.95	5.41	--	--	--	--	65	<0.5	<0.5	<0.5	<0.5	270**	--	<2.5
12/05/97	4.46	-1.96	6.42	--	--	--	--	--	--	--	--	--	--	--	--
02/13/98	4.46	-0.30	4.76	--	--	--	--	140	<0.5	<0.5	<0.5	<0.5	330**	--	<2.5
06/17/98	4.46	-1.54	6.00	--	--	--	--	--	--	--	--	--	--	--	--
08/31/98	4.46	-0.64	5.10	--	--	--	--	<50	<0.5	<0.5	<0.5	<0.5	270*	--	<2.5
12/28/98	4.46	-2.04	6.50	--	--	--	+	--	--	--	--	--	--	--	--
03/04/99	4.46	-1.35	5.81	--	--	--	--	95.5	<0.5	<0.5	<0.5	<0.5	638*	--	<2.0
06/14/99	4.46	-0.97	5.43	--	--	--	--	--	--	--	--	--	--	--	--
09/17/99	4.46	-1.74	6.20	--	--	--	--	<50	<0.5	<0.5	<0.5	<0.5	258*	--	<2.5

\* Chromatogram pattern indicates a non-diesel mix.

\*\* Chromatogram pattern indicates an unidentified hydrocarbon.

+ See Additional Analyses.



## Cumulative Table of Well Data and Analytical Results

Vertical Measurements are in feet.				Volumetric Measurements are in gallons.			Analytical results are in parts per billion (ppb)								
DATE	Well Head Elev.	Ground Water Elev.	Depth To Water	SPH Thickness	SPH Removed	Total SPH Removed	Notes	TPH Gasoline	Benzene	Toluene	Ethyl-Benzene	Xylene	TPH-Diesel	TDS	MTBE
<b>MW-7</b>															
08/24/92	5.26	-0.29	5.55	--	--	--	--	--	--	--	--	--	--	--	--
09/21/92	5.26	-0.39	5.65	--	--	--	--	<50	<0.5	<0.5	<0.5	<0.5	<50	--	--
10/26/92	5.26	-0.25	5.51	--	--	--	--	--	--	--	--	--	--	--	--
12/23/92	5.26	1.31	3.95	--	--	--	--	<50	2.9	<0.5	<0.5	<0.5	60	--	--
01/08/93	5.26	--	--	--	--	--	--	--	--	--	--	--	--	--	--
03/25/93	5.26	2.76	2.50	--	--	--	--	<50	<0.5	<0.5	<0.5	<0.5	<10	--	--
06/11/93	5.26	1.80	3.46	--	--	--	--	<50	0.6	<0.5	<0.5	<0.5	--	2200	--
09/29/93	5.26	-0.26	5.52	--	--	--	--	<50	2.0	1.0	1.0	7.0	<10	--	--
12/20/93	5.26	0.85	4.41	--	--	--	--	<50	2.0	<0.5	<0.5	<0.5	<10	--	--
03/07/94	5.26	2.64	2.62	--	--	--	--	<50	<0.5	<0.5	<0.5	<0.5	<10	--	--
05/17/94	5.26	1.93	3.27	--	--	--	--	<50	<0.5	<0.5	<0.5	<0.5	<50	--	--
09/12/94	5.26	1.15	4.11	--	--	--	--	<50	<0.5	<0.5	<0.5	<0.5	<50	--	<5.0
11/30/94	5.26	2.50	2.76	--	--	--	--	<50	<0.5	<0.5	<0.5	<0.5	92*	--	--
03/24/95	5.26	3.06	2.20	--	--	--	--	<50	<0.5	<0.5	<0.5	<0.5	<50	--	--
06/17/95	5.26	1.36	3.90	--	--	--	--	<50	<0.5	<0.5	<0.5	<0.5	69**	--	--
09/28/95	5.26	0.41	4.85	--	--	--	--	<50	<0.5	<0.5	<0.5	<0.5	84**	--	--
11/10/95	5.26	2.24	3.02	--	--	--	--	<50	<0.5	<0.5	<0.5	<0.5	84**	--	<2.5
02/08/96	5.26	3.83	1.43	--	--	--	--	<50	<0.5	<0.5	<0.5	<0.5	99**	--	<2.5
06/25/96	5.26	0.97	4.29	--	--	--	--	<50	<0.5	<0.5	<0.5	<0.5	110**	--	<2.5
12/17/96	5.26	3.08	2.18	--	--	--	--	<50	<0.5	<0.5	<0.5	<0.5	54**	--	<2.5
03/31/97	5.26	2.32	2.94	--	--	--	--	<50	<0.5	<0.5	<0.5	<0.5	100**	--	<2.5
06/30/97	5.26	1.68	3.58	--	--	--	Sampled annually	--	--	--	--	--	--	--	--
09/12/97	5.26	1.85	3.41	--	--	--	--	--	--	--	--	--	--	--	--
12/05/97	5.26	3.37	1.89	--	--	--	--	--	--	--	--	--	--	--	--
02/16/98	5.26	3.43	1.83	--	--	--	--	<50	<0.5	<0.5	<0.5	<0.5	77**	--	<2.5
06/17/98	5.26	3.32	1.94	--	--	--	--	--	--	--	--	--	--	--	--
08/31/98	5.26	1.07	4.19	--	--	--	--	--	--	--	--	--	--	--	--
12/28/98	5.26	0.79	4.47	--	--	--	+	--	--	--	--	--	--	--	--
03/04/99	5.26	3.51	1.75	--	--	--	--	<50	<0.5	<0.5	<0.5	<0.5	73.4	--	<2.0
06/14/99	5.26	3.64	1.62	--	--	--	--	--	--	--	--	--	--	--	--
09/17/99	5.26	0.42	4.84	--	--	--	--	--	--	--	--	--	--	--	--

\* Chromatogram pattern indicates a non-diesel mix.

\*\* Chromatogram pattern indicates an unidentified hydrocarbon.

+ See Additional Analyses.

## Cumulative Table of Well Data and Analytical Results

Vertical Measurements are in feet.

Volumetric Measurements are in gallons.

Analytical results are in parts per billion (ppb)

DATE	Well Head Elev.	Ground Water Elev.	Depth To Water	SPH Thickness	SPH Removed	Total SPH Removed	Notes	TPH-Gasoline	Benzene	Toluene	Ethyl-Benzene	Xylene	TPH-Diesel	TDS	MTBE
<b>MW-8</b>															
06/23/92	8.94	-15.20	24.14	--	--	--	--	<50	<0.5	<0.5	<0.5	<0.5	<50	--	--
08/24/92	8.94	0.34	8.60	--	--	--	--	--	--	--	--	--	--	--	--
09/21/92	8.94	0.55	8.39	--	--	--	--	94	<0.5	<0.5	<0.5	<0.5	<50	--	--
10/26/92	8.94	-0.18	9.12	--	--	--	--	--	--	--	--	--	--	--	--
12/23/92	8.94	0.83	8.11	--	--	--	--	<50	0.7	5.0	0.7	2.9	79	--	--
01/09/93	8.94	--	--	--	--	--	--	--	--	--	--	--	--	--	--
03/25/93	8.94	--	--	--	--	--	--	--	--	--	--	--	--	--	--
05/11/93	8.94	0.55	8.39	--	--	--	--	<50	<0.5	<0.5	<0.5	<0.5	--	3500	--
09/29/93	8.94	0.69	8.25	--	--	--	--	<50	<0.5	<0.5	<0.5	<0.5	<10	--	--
12/26/93	8.94	0.48	8.46	--	--	--	--	<50	<0.5	0.6	<0.5	1.0	<10	--	--
03/07/94	8.94	0.28	8.66	--	--	--	--	<50	<0.5	<0.5	<0.5	<0.5	<10	--	--
06/17/94	8.94	0.12	8.82	--	--	--	--	<50	<0.5	<0.5	<0.5	<0.5	<50	--	--
09/12/94	8.94	0.11	8.83	--	--	--	--	<50	<0.5	<0.5	<0.5	0.8	<50	--	<5.0
11/30/94	8.94	0.31	8.63	--	--	--	--	<50	<0.5	<0.5	<0.5	<0.5	120*	--	--
03/24/95	8.94	0.43	8.51	--	--	--	--	<50	<0.5	<0.5	<0.5	<0.5	110**	--	--
06/27/95	8.94	-0.03	8.97	--	--	--	--	<50	<0.5	<0.5	<0.5	<0.5	67**	--	--
09/28/95	8.94	0.04	8.90	--	--	--	--	<50	<0.5	<0.5	<0.5	<0.5	91**	--	--
12/19/95	8.94	0.54	8.40	--	--	--	--	<50	<0.5	<0.5	<0.5	<0.5	76**	--	<2.5
02/28/96	8.94	0.50	8.44	--	--	--	--	<50	<0.5	<0.5	<0.5	<0.5	<50	--	<2.5
06/25/96	8.94	0.05	8.89	--	--	--	--	<50	<0.5	<0.5	<0.5	<0.5	80**	--	<2.5
12/17/96	8.94	0.49	8.45	--	--	--	--	<50	<0.5	<0.5	<0.5	<0.5	79**	--	<2.5
03/31/97	8.94	0.18	8.76	--	--	--	--	<50	<0.5	<0.5	<0.5	<0.5	72**	--	3.6
06/30/97	8.94	-0.18	9.12	--	--	--	Sampled annually	--	--	--	--	--	--	--	--
09/12/97	8.94	0.13	8.81	--	--	--	--	--	--	--	--	--	--	--	--
12/05/97	8.94	0.59	8.35	--	--	--	--	--	--	--	--	--	--	--	--
02/16/98	8.94	1.00	7.94	--	--	--	--	<50	<0.5	<0.5	<0.5	<0.5	68**	--	4.3
06/17/98	8.94	0.51	8.43	--	--	--	--	--	--	--	--	--	--	--	--
08/31/98	8.94	0.06	8.88	--	--	--	--	--	--	--	--	--	--	--	--
12/28/98	8.94	0.64	8.30	--	--	--	+	--	--	--	--	--	--	--	--
03/04/99	8.94	0.29	8.65	--	--	--	--	<50	<0.5	<0.5	<0.5	<0.5	106	--	3.83
06/14/99	8.94	0.52	8.42	--	--	--	--	--	--	--	--	--	--	--	--
09/17/99	8.94	-0.93	9.87	--	--	--	--	--	--	--	--	--	--	--	--

\* Chromatogram pattern indicates a non-diesel mix.

\*\* Chromatogram pattern indicates an unidentified hydrocarbon.

+ See Additional Analyses.

## Cumulative Table of Well Data and Analytical Results

Vertical Measurements are in feet.

Volumetric Measurements are in gallons.

Analytical results are in parts per billion (ppb)

DATE	Well Head Elev.	Ground Water Elev.	Depth To Water	SPH Thickness	SPH Removed	Total SPH Removed	Notes	TPH-Gasoline	Benzene	Toluene	Ethyl-Benzene	Xylene	TPH-Diesel	TDS	MTBE
<b>MW-9</b>															
04/19/99	5.87	2.71	3.16	--	--	--	--	3900**	14	6.9	14	24	2600*	--	140
05/14/99	5.87	1.06	4.81	--	--	--	--	2880	12.6	<10	<10	<10	2800*	--	138
09/17/99	5.87	1.02	4.85	--	--	--	--	3370	33.1	14.4	<5.0	<5.0	1770*	--	202

\* Chromatogram pattern indicates an unidentified hydrocarbon.

\*\* Laboratory report indicates gasoline and unidentified hydrocarbons >10.

### Cumulative Table of Well Data and Analytical Results

Vertical Measurements are in feet.

Volumetric Measurements are in gallons.

Analytical results are in parts per billion (ppb)

DATE	Well Head Elev.	Ground Water Elev.	Depth To Water	SPH Thickness	SPH Removed	Total SPH Removed	Notes	TPH-Gasoline	Benzene	Toluene	Ethyl-Benzene	Xylene	TPH-Diesel	TDS	MTBE
<b>TRIP BLANK</b>															
08/24/92	--	--	--	--	--	--	--	--	--	--	--	--	--	--	--
08/21/92	--	--	--	--	--	--	--	<50	<0.5	<0.5	<0.5	<0.5	--	--	--
10/26/92	--	--	--	--	--	--	--	--	--	--	--	--	--	--	--
12/23/92	--	--	--	--	--	--	--	<50	<0.5	<0.5	<0.5	<0.5	--	--	--
01/08/93	--	--	--	--	--	--	--	--	--	--	--	--	--	--	--
03/25/93	--	--	--	--	--	--	--	<50	<0.5	<0.5	<0.5	<0.5	--	--	--
06/11/93	--	--	--	--	--	--	--	<50	<0.5	<0.5	<0.5	<0.5	--	--	--
09/29/93	--	--	--	--	--	--	--	<50	<0.5	<0.5	<0.5	<0.5	--	--	--
12/20/93	--	--	--	--	--	--	--	<50	<0.5	<0.5	<0.5	<0.5	--	--	--
03/07/94	--	--	--	--	--	--	--	<50	<0.5	<0.5	<0.5	<0.5	--	--	--
06/17/94	--	--	--	--	--	--	--	<50	<0.5	<0.5	<0.5	<0.5	--	--	--
09/12/94	--	--	--	--	--	--	--	<50	<0.5	<0.5	<0.5	1.0	--	--	--
11/30/94	--	--	--	--	--	--	--	<50	<0.5	<0.5	<0.5	<0.5	--	--	--
03/24/95	--	--	--	--	--	--	--	<50	<0.5	<0.5	<0.5	<0.5	--	--	--
06/27/95	--	--	--	--	--	--	--	<50	<0.5	<0.5	<0.5	<0.5	--	--	--
09/28/95	--	--	--	--	--	--	--	<50	<0.5	<0.5	<0.5	<0.5	--	--	--
12/19/95	--	--	--	--	--	--	--	<50	<0.5	<0.5	<0.5	<0.5	--	--	--
02/28/96	--	--	--	--	--	--	--	<50	<0.5	<0.5	<0.5	<0.5	--	--	--
06/25/96	--	--	--	--	--	--	--	<50	<0.5	<0.5	<0.5	<0.5	--	--	--
12/17/96	--	--	--	--	--	--	--	<50	<0.5	<0.5	<0.5	<0.5	--	--	<2.5
03/31/97	--	--	--	--	--	--	--	<50	<0.5	<0.5	<0.5	<0.5	--	--	<2.5
06/30/97	--	--	--	--	--	--	--	<50	<0.5	<0.5	<0.5	<0.5	--	--	<2.5
09/12/97	--	--	--	--	--	--	--	<50	<0.5	<0.5	<0.5	<0.5	--	--	<2.5
12/05/97	--	--	--	--	--	--	--	<50	<0.5	<0.5	<0.5	<0.5	--	--	<2.5
02/16/98	--	--	--	--	--	--	--	<50	<0.5	<0.5	<0.5	<0.5	--	--	<2.5
06/17/98	--	--	--	--	--	--	--	<50	<0.5	<0.5	<0.5	<0.5	--	--	<2.5
08/31/98	--	--	--	--	--	--	--	<50	<0.5	<0.5	<0.5	<0.5	--	--	<2.5
12/28/98	--	--	--	--	--	--	--	<50	<0.5	<0.5	<0.5	<0.5	--	--	<2.5
03/04/99	--	--	--	--	--	--	--	<50	<0.5	<0.5	<0.5	<0.5	--	--	<2.0
06/14/99	--	--	--	--	--	--	--	<50	<0.5	<0.5	<0.5	<0.5	--	--	<2.5
09/17/99	--	--	--	--	--	--	--	<50	<0.5	<0.5	<0.5	<0.5	--	--	<2.5

## Cumulative Table of Well Data and Analytical Results

### ADDITIONAL ANALYSES

Analytical values are in parts per billion (ppb)

DATE	Notes	Total Alkalinity	Ferrous Iron	Sulfate	Nitrate
<b>MW-1</b>					
12/28/98	--	390,000	4900	<1000	<1000
<b>MW-3</b>					
12/28/98	--	980,000	4500	390,000	<1000
<b>MW-4</b>					
12/28/98	--	670,000	3500	6800	<1000
<b>MW-5</b>					
12/28/98	--	480,000	15	51,000	<1000
<b>MW-6</b>					
12/28/98	--	2,400,000	810	110,000	<1000
<b>MW-7</b>					
12/28/98	--	350,000	12,000	79,000	<1000
<b>MW-8</b>					
12/28/98	--	1,100,000	45	87,000	<1000

Note: Blaine Tech Services, Inc. began routine monitoring of the groundwater wells at this site on November 1, 1994.  
 Earlier field data and analytical results are drawn from the September 27, 1994 Groundwater Technology, Inc. report.  
 Wells MW-2A, MW-3A, MW-4A and MW-9 were surveyed on April 12, 1999 by Virgil Chavez of Vallejo, California.

#### ABBREVIATIONS:

TPH = Total Petroleum Hydrocarbons  
 TDS = Total Dissolved Solids  
 MTBE = Methyl-tert-butyl Ether  
 SPH = Separate Phase Hydrocarbons

# Analytical Appendix



October 18, 1999

Scott Boor  
Blaine Tech Services (Chev)  
1680 Rogers Avenue  
San Jose, CA 95112

RE: Chevron 9-0121/M909683

Dear Scott Boor

Enclosed are the results of analyses for sample(s) received by the laboratory on September 20, 1999. Chromatograms for unidentified hydrocarbons are included in this report. This report was revised and reissued per client request on November 11, 1999. If you have any questions concerning this report, please feel free to contact me.

Sincerely,

Wendy Bonnes  
Project Manager

CA ELAP Certificate Number 1210





Blaine Tech Services (Chev) 1680 Rogers Avenue San Jose, CA 95112	Project: Chevron 9-0121 (3026 Lakeshore Ave., Oakland) Project Number: 990917-C2 Project Manager: Christine Lillie	Sampled: 9/17/99 Received: 9/20/99 Reported: 10/18/99
---	--	---

**ANALYTICAL REPORT FOR M909683**

Sample Description	Laboratory Sample Number	Sample Matrix	Date Sampled
MW-1	M909683-01	Water	9/17/99
MW-2A	M909683-02	Water	9/17/99
MW-3A	M909683-03	Water	9/17/99
MW-4A	M909683-04	Water	9/17/99
MW-5	M909683-05	Water	9/17/99
MW-6	M909683-06	Water	9/17/99
MW-9	M909683-07	Water	9/17/99
TB	M909683-08	Water	9/17/99





Blaine Tech Services (Chev) 1680 Rogers Avenue San Jose, CA 95112	Project: Chevron 9-0121 (3026 Lakeshore Ave., Oakland) Project Number: 990917-C2 Project Manager: Christine Lillie	Sampled: 9/17/99 Received: 9/20/99 Reported: 10/18/99
---	--	---

**Total Purgeable Hydrocarbons (C6-C12), BTEX and MTBE by DHS LUFT  
Sequoia Analytical - Morgan Hill**

Analyte	Batch Number	Date Prepared	Date Analyzed	Surrogate Limits	Reporting Limit	Result	Units	Notes*
<b>MW-1</b>				<b>M909683-01</b>		<b>Water</b>		
Purgeable Hydrocarbons	9090782	9/27/99	9/27/99		1000	3300	ug/l	1,D
Benzene	"	"	"		10.0	141	"	D
Toluene	"	"	"		10.0	12.3	"	D
Ethylbenzene	"	"	"		10.0	ND	"	D
Xylenes (total)	"	"	"		10.0	ND	"	D
Methyl tert-butyl ether	"	"	"		50.0	238	"	D
Surrogate: a,a,a-Trifluorotoluene	"	"	"	70.0-130		89.1	%	
<b>MW-2A</b>				<b>M909683-02</b>		<b>Water</b>		
Purgeable Hydrocarbons	9090782	9/27/99	9/27/99		50.0	903	ug/l	1
Benzene	"	"	"		0.500	42.0	"	
Toluene	"	"	"		0.500	1.63	"	
Ethylbenzene	"	"	"		0.500	22.8	"	
Xylenes (total)	"	"	"		0.500	7.74	"	
Methyl tert-butyl ether	"	"	"		250	11400	"	D
Surrogate: a,a,a-Trifluorotoluene	"	"	"	70.0-130		97.7	%	
<b>MW-3A</b>				<b>M909683-03</b>		<b>Water</b>		
Purgeable Hydrocarbons	9090782	9/27/99	9/27/99		50.0	169	ug/l	1
Benzene	"	"	"		0.500	6.02	"	
Toluene	"	"	"		0.500	0.806	"	
Ethylbenzene	"	"	"		0.500	0.515	"	
Xylenes (total)	"	"	"		0.500	0.786	"	
Methyl tert-butyl ether	"	"	"		2.50	4.68	"	
Surrogate: a,a,a-Trifluorotoluene	"	"	"	70.0-130		107	%	
<b>MW-4A</b>				<b>M909683-04</b>		<b>Water</b>		
Purgeable Hydrocarbons	9090782	9/27/99	9/27/99		500	1290	ug/l	1,D
Benzene	"	"	"		5.00	38.6	"	D
Toluene	"	"	"		5.00	ND	"	D
Ethylbenzene	"	"	"		5.00	7.01	"	D
Xylenes (total)	"	"	"		5.00	ND	"	D
Methyl tert-butyl ether	"	"	"		25.0	1780	"	D
Surrogate: a,a,a-Trifluorotoluene	"	"	"	70.0-130		85.7	%	
<b>MW-5</b>				<b>M909683-05</b>		<b>Water</b>		
Purgeable Hydrocarbons	9090782	9/27/99	9/27/99		50.0	ND	ug/l	
Benzene	"	"	"		0.500	ND	"	
Toluene	"	"	"		0.500	ND	"	
Ethylbenzene	"	"	"		0.500	ND	"	
Xylenes (total)	"	"	"		0.500	ND	"	



Blaine Tech Services (Chev) 1680 Rogers Avenue San Jose, CA 95112	Project: Chevron 9-0121 (3026 Lakeshore Ave., Oakland) Project Number: 990917-C2 Project Manager: Christine Lillie	Sampled: 9/17/99 Received: 9/20/99 Reported: 10/18/99
---	--	---

**Total Purgeable Hydrocarbons (C6-C12), BTEX and MTBE by DHS LUFT  
Sequoia Analytical - Morgan Hill**

Analyte	Batch Number	Date Prepared	Date Analyzed	Surrogate Limits	Reporting Limit	Result	Units	Notes*
<b>MW-5 (continued)</b>				<b>M909683-05</b>			<b>Water</b>	
Methyl tert-butyl ether	9090782	9/27/99	9/27/99		2.50	ND	ug/l	
Surrogate: a,a,a-Trifluorotoluene	"	"	"	70.0-130		104	%	
<b>MW-6</b>				<b>M909683-06</b>			<b>Water</b>	
Purgeable Hydrocarbons	9090782	9/27/99	9/27/99		50.0	ND	ug/l	
Benzene	"	"	"		0.500	ND	"	
Toluene	"	"	"		0.500	ND	"	
Ethylbenzene	"	"	"		0.500	ND	"	
Xylenes (total)	"	"	"		0.500	ND	"	
Methyl tert-butyl ether	"	"	"		2.50	ND	"	
Surrogate: a,a,a-Trifluorotoluene	"	"	"	70.0-130		110	%	
<b>MW-9</b>				<b>M909683-07</b>			<b>Water</b>	
Purgeable Hydrocarbons	9090821	9/28/99	9/29/99		500	3370	ug/l	1,D
Benzene	"	"	"		5.00	33.1	"	D
Toluene	"	"	"		5.00	14.4	"	D
Ethylbenzene	"	"	"		5.00	ND	"	D
Xylenes (total)	"	"	"		5.00	ND	"	D
Methyl tert-butyl ether	"	"	"		25.0	202	"	D
Surrogate: a,a,a-Trifluorotoluene	"	"	"	70.0-130		123	%	
<b>TB</b>				<b>M909683-08</b>			<b>Water</b>	
Purgeable Hydrocarbons	9090782	9/27/99	9/27/99		50.0	ND	ug/l	
Benzene	"	"	"		0.500	ND	"	
Toluene	"	"	"		0.500	ND	"	
Ethylbenzene	"	"	"		0.500	ND	"	
Xylenes (total)	"	"	"		0.500	ND	"	
Methyl tert-butyl ether	"	"	"		2.50	ND	"	
Surrogate: a,a,a-Trifluorotoluene	"	"	"	70.0-130		93.5	%	



Blaine Tech Services (Chev) 1680 Rogers Avenue San Jose, CA 95112	Project: Chevron 9-0121 (3026 Lakeshore Ave., Oakland) Project Number: 990917-C2 Project Manager: Christine Lillie	Sampled: 9/17/99 Received: 9/20/99 Reported: 10/18/99
---	--	---

**Diesel Hydrocarbons (C9-C24) by DHS LUFT  
Sequoia Analytical - Morgan Hill**

Analyte	Batch Number	Date Prepared	Date Analyzed	Surrogate Limits	Reporting Limit	Result	Units	Notes*
<u>MW-1</u> Diesel Range Hydrocarbons	9090761	9/24/99	10/6/99	<u>M909683-01</u>	0.0500	2.11	<u>Water</u> mg/l	2
Surrogate: n-Pentacosane	"	"	"	50.0-150		130	%	
<u>MW-2A</u> Diesel Range Hydrocarbons	9100245	10/8/99	10/12/99	<u>M909683-02</u>	0.0500	1.37	<u>Water</u> mg/l	2,3,5
Surrogate: n-Pentacosane	"	"	"	50.0-150		103	%	
<u>MW-3A</u> Diesel Range Hydrocarbons	9100334	10/11/99	10/14/99	<u>M909683-03</u>	0.0500	0.101	<u>Water</u> mg/l	2,5
Surrogate: n-Pentacosane	"	"	"	50.0-150			%	
<u>MW-4A</u> Diesel Range Hydrocarbons	9090761	9/24/99	9/29/99	<u>M909683-04</u>	0.0500	1.43	<u>Water</u> mg/l	2
Surrogate: n-Pentacosane	"	"	"	50.0-150		89.0	%	
<u>MW-5</u> Diesel Range Hydrocarbons	9090761	9/24/99	9/29/99	<u>M909683-05</u>	0.0500	ND	<u>Water</u> mg/l	
Surrogate: n-Pentacosane	"	"	"	50.0-150		88.0	%	
<u>MW-6</u> Diesel Range Hydrocarbons	9090761	9/24/99	9/29/99	<u>M909683-06</u>	0.0500	0.258	<u>Water</u> mg/l	2
Surrogate: n-Pentacosane	"	"	"	50.0-150		92.0	%	
<u>MW-9</u> Diesel Range Hydrocarbons	9090761	9/24/99	9/29/99	<u>M909683-07</u>	0.0500	1.77	<u>Water</u> mg/l	2
Surrogate: n-Pentacosane	"	"	"	50.0-150		93.0	%	



Blaine Tech Services (Chev) 1680 Rogers Avenue San Jose, CA 95112	Project: Chevron 9-0121 (3026 Lakeshore Ave., Oakland) Project Number: 990917-C2 Project Manager: Christine Lillie	Sampled: 9/17/99 Received: 9/20/99 Reported: 10/18/99
---	--	---

**Total Purgeable Hydrocarbons (C6-C12), BTEX and MTBE by DHS LUFT/Quality Control**  
**Sequoia Analytical - Morgan Hill**

Analyte	Date Analyzed	Spike Level	Sample Result	QC Result	Units	Reporting Limit Recov. Limits	Recov. %	RPD Limit	RPD %	Notes*
<b>Batch: 9090782</b>			<b>Date Prepared: 9/27/99</b>			<b>Extraction Method: EPA 5030B [P/T]</b>				
<b>Blank</b>			<b>9090782-BLK1</b>							
Purgeable Hydrocarbons	9/27/99			ND	ug/l	50.0				
Benzene	"			ND	"	0.500				
Toluene	"			ND	"	0.500				
Ethylbenzene	"			ND	"	0.500				
Xylenes (total)	"			ND	"	0.500				
Methyl tert-butyl ether	"			ND	"	2.50				
Surrogate: a,a,a-Trifluorotoluene	"	10.0		9.54	"	70.0-130	95.4			
<b>LCS</b>			<b>9090782-BS1</b>							
Benzene	9/27/99	10.0		9.57	ug/l	70.0-130	95.7			
Toluene	"	10.0		9.78	"	70.0-130	97.8			
Ethylbenzene	"	10.0		10.1	"	70.0-130	101			
Xylenes (total)	"	30.0		29.5	"	70.0-130	98.3			
Surrogate: a,a,a-Trifluorotoluene	"	10.0		9.42	"	70.0-130	94.2			
<b>Matrix Spike</b>			<b>9090782-MS1</b>		<b>M909683-05</b>					
Benzene	9/27/99	10.0	ND	9.99	ug/l	60.0-140	99.9			
Toluene	"	10.0	ND	10.2	"	60.0-140	102			
Ethylbenzene	"	10.0	ND	10.5	"	60.0-140	105			
Xylenes (total)	"	30.0	ND	30.6	"	60.0-140	102			
Surrogate: a,a,a-Trifluorotoluene	"	10.0		9.92	"	70.0-130	99.2			
<b>Matrix Spike Dup</b>			<b>9090782-MSD1</b>		<b>M909683-05</b>					
Benzene	9/27/99	10.0	ND	10.1	ug/l	60.0-140	101	25.0	1.10	
Toluene	"	10.0	ND	10.3	"	60.0-140	103	25.0	0.976	
Ethylbenzene	"	10.0	ND	10.7	"	60.0-140	107	25.0	1.89	
Xylenes (total)	"	30.0	ND	31.2	"	60.0-140	104	25.0	1.94	
Surrogate: a,a,a-Trifluorotoluene	"	10.0		9.11	"	70.0-130	91.1			
<b>Batch: 9090821</b>			<b>Date Prepared: 9/28/99</b>			<b>Extraction Method: EPA 5030B [P/T]</b>				
<b>Blank</b>			<b>9090821-BLK1</b>							
Purgeable Hydrocarbons	9/29/99			ND	ug/l	50.0				
Benzene	"			ND	"	0.500				
Toluene	"			ND	"	0.500				
Ethylbenzene	"			ND	"	0.500				
Xylenes (total)	"			ND	"	0.500				
Methyl tert-butyl ether	"			ND	"	2.50				
Surrogate: a,a,a-Trifluorotoluene	"	10.0		11.1	"	70.0-130	111			





Blaine Tech Services (Chev) 1680 Rogers Avenue San Jose, CA 95112	Project: Chevron 9-0121 (3026 Lakeshore Ave., Oakland) Project Number: 990917-C2 Project Manager: Christine Lillie	Sampled: 9/17/99 Received: 9/20/99 Reported: 10/18/99
---	--	---

**Total Purgeable Hydrocarbons (C6-C12), BTEX and MTBE by DHS LUFT/Quality Control  
Sequoia Analytical - Morgan Hill**

Analyte	Date Analyzed	Spike Level	Sample Result	QC Result	Units	Reporting Limit Recov. Limits	Recov. %	RPD Limit	RPD %	Notes*
<b>LCS</b>	<b>9090821-BS1</b>									
Purgeable Hydrocarbons	9/29/99	250		249	ug/l	70.0-130	99.6			
Surrogate: <i>a,a,a</i> -Trifluorotoluene	"	10.0		13.8	"	70.0-130	138			3
<b>Matrix Spike</b>	<b>9090821-MS1</b>		<b>M909693-03</b>							
Purgeable Hydrocarbons	9/29/99	250	ND	239	ug/l	60.0-140	95.6			
Surrogate: <i>a,a,a</i> -Trifluorotoluene	"	10.0		12.7	"	70.0-130	127			
<b>Matrix Spike Dup</b>	<b>9090821-MSD1</b>		<b>M909693-03</b>							
Purgeable Hydrocarbons	9/29/99	250	ND	239	ug/l	60.0-140	95.6	25.0	0	
Surrogate: <i>a,a,a</i> -Trifluorotoluene	"	10.0		12.3	"	70.0-130	123			





Blaine Tech Services (Chev) 1680 Rogers Avenue San Jose, CA 95112	Project: Chevron 9-0121 (3026 Lakeshore Ave., Oakland) Project Number: 990917-C2 Project Manager: Christine Lillie	Sampled: 9/17/99 Received: 9/20/99 Reported: 10/18/99
---	--	---

**Diesel Hydrocarbons (C9-C24) by DHS LUFT/Quality Control  
Sequoia Analytical - Morgan Hill**

Analyte	Date Analyzed	Spike Level	Sample Result	QC Result	Units	Reporting Limit Recov. Limits	Recov. %	RPD Limit	RPD %	Notes*
<b>Batch: 9090761</b>			<b>Date Prepared: 9/24/99</b>			<b>Extraction Method: EPA 3520B</b>				
<b>Blank</b>			<b>9090761-BLK1</b>							
Diesel Range Hydrocarbons	9/29/99			ND	mg/l	0.0500				
Surrogate: n-Pentacosane	"	0.100		0.0810	"	50.0-150	81.0			
<b>LCS</b>			<b>9090761-BS1</b>							
Diesel Range Hydrocarbons	9/29/99	1.00		0.700	mg/l	60.0-140	70.0			
Surrogate: n-Pentacosane	"	0.100		0.0800	"	50.0-150	80.0			
<b>Matrix Spike</b>			<b>9090761-MS1</b>							
Diesel Range Hydrocarbons	9/29/99	1.00		1.51	mg/l	50.0-150				
Surrogate: n-Pentacosane	"	0.100		0.0880	"	50.0-150	88.0			
<b>Matrix Spike Dup</b>			<b>9090761-MSD1</b>							
Diesel Range Hydrocarbons	9/29/99	1.00		1.26	mg/l	50.0-150		50.0		
Surrogate: n-Pentacosane	"	0.100		0.0790	"	50.0-150	79.0			
<b>Batch: 9100086</b>			<b>Date Prepared: 10/4/99</b>			<b>Extraction Method: EPA 3520B</b>				
<b>Blank</b>			<b>9100086-BLK1</b>							
Diesel Range Hydrocarbons	10/6/99			0.0570	mg/l	0.0500				4
Surrogate: n-Pentacosane	"	0.100		0.0780	"	50.0-150	78.0			
<b>LCS</b>			<b>9100086-BS1</b>							
Diesel Range Hydrocarbons	10/6/99	1.00		0.714	mg/l	60.0-140	71.4			
Surrogate: n-Pentacosane	"	0.100		0.0770	"	50.0-150	77.0			
<b>LCS Dup</b>			<b>9100086-BSD1</b>							
Diesel Range Hydrocarbons	10/6/99	1.00		0.668	mg/l	60.0-140	66.8	50.0	6.66	
Surrogate: n-Pentacosane	"	0.100		0.0720	"	50.0-150	72.0			
<b>Batch: 9100245</b>			<b>Date Prepared: 10/8/99</b>			<b>Extraction Method: EPA 3520B</b>				
<b>Blank</b>			<b>9100245-BLK1</b>							
Diesel Range Hydrocarbons	10/12/99			ND	mg/l	0.0500				
Surrogate: n-Pentacosane	"	0.100		0.0915	"	50.0-150	91.5			
<b>LCS</b>			<b>9100245-BS1</b>							
Diesel Range Hydrocarbons	10/12/99	1.00		0.739	mg/l	60.0-140	73.9			
Surrogate: n-Pentacosane	"	0.100		0.0853	"	50.0-150	85.3			
<b>LCS Dup</b>			<b>9100245-BSD1</b>							
Diesel Range Hydrocarbons	10/12/99	1.00		0.875	mg/l	60.0-140	87.5	50.0	16.9	
Surrogate: n-Pentacosane	"	0.100		0.0974	"	50.0-150	97.4			





Blaine Tech Services (Chev) 1680 Rogers Avenue San Jose, CA 95112	Project: Chevron 9-0121 (3026 Lakeshore Ave., Oakland) Project Number: 990917-C2 Project Manager: Christine Lillie	Sampled: 9/17/99 Received: 9/20/99 Reported: 10/18/99
---	--	---

**Diesel Hydrocarbons (C9-C24) by DHS LUFT/Quality Control**  
**Sequoia Analytical - Morgan Hill**

Analyte	Date Analyzed	Spike Level	Sample Result	QC Result	Units	Reporting Limit Recov. Limits	Recov. %	RPD Limit	RPD %	Notes*
<b>Batch: 9100334</b>		<b>Date Prepared: 10/11/99</b>			<b>Extraction Method: EPA 3510B</b>					
<b>Blank</b>		<b>9100334-BLK1</b>								
Diesel Range Hydrocarbons	10/13/99			ND	mg/l	0.0500				
Surrogate: n-Pentacosane	"			0.0881	"	50.0-150				
<b>LCS</b>		<b>9100334-BS1</b>								
Diesel Range Hydrocarbons	10/13/99	1.00		0.725	mg/l	60.0-140	72.5			
Surrogate: n-Pentacosane	"			0.0912	"	50.0-150				
<b>LCS Dup</b>		<b>9100334-BSD1</b>								
Diesel Range Hydrocarbons	10/13/99	1.00		0.795	mg/l	60.0-140	79.5	50.0	9.21	
Surrogate: n-Pentacosane	"			0.0901	"	50.0-150				





Blaine Tech Services (Chev) 1680 Rogers Avenue San Jose, CA 95112	Project: Chevron 9-0121 (3026 Lakeshore Ave., Oakland) Project Number: 990917-C2 Project Manager: Christine Lillie	Sampled: 9/17/99 Received: 9/20/99 Reported: 10/18/99
---	--	---

### Notes and Definitions

#	Note
D	Data reported from a dilution.
1	Chromatogram Pattern: Gasoline C6-C12
2	Chromatogram Pattern: Unidentified Hydrocarbons C9-C24
3	The surrogate recovery for this sample is outside of established control limits due to a sample matrix effect.
4	MB was analyzed twice with contamination reported at 60 and 57 ppb. MRL was raised to 100 ppb.
5	This sample was extracted past the EPA recommended holding time.
DET	Analyte DETECTED
ND	Analyte NOT DETECTED at or above the reporting limit
NR	Not Reported
dry	Sample results reported on a dry weight basis
Recov.	Recovery
RPD	Relative Percent Difference



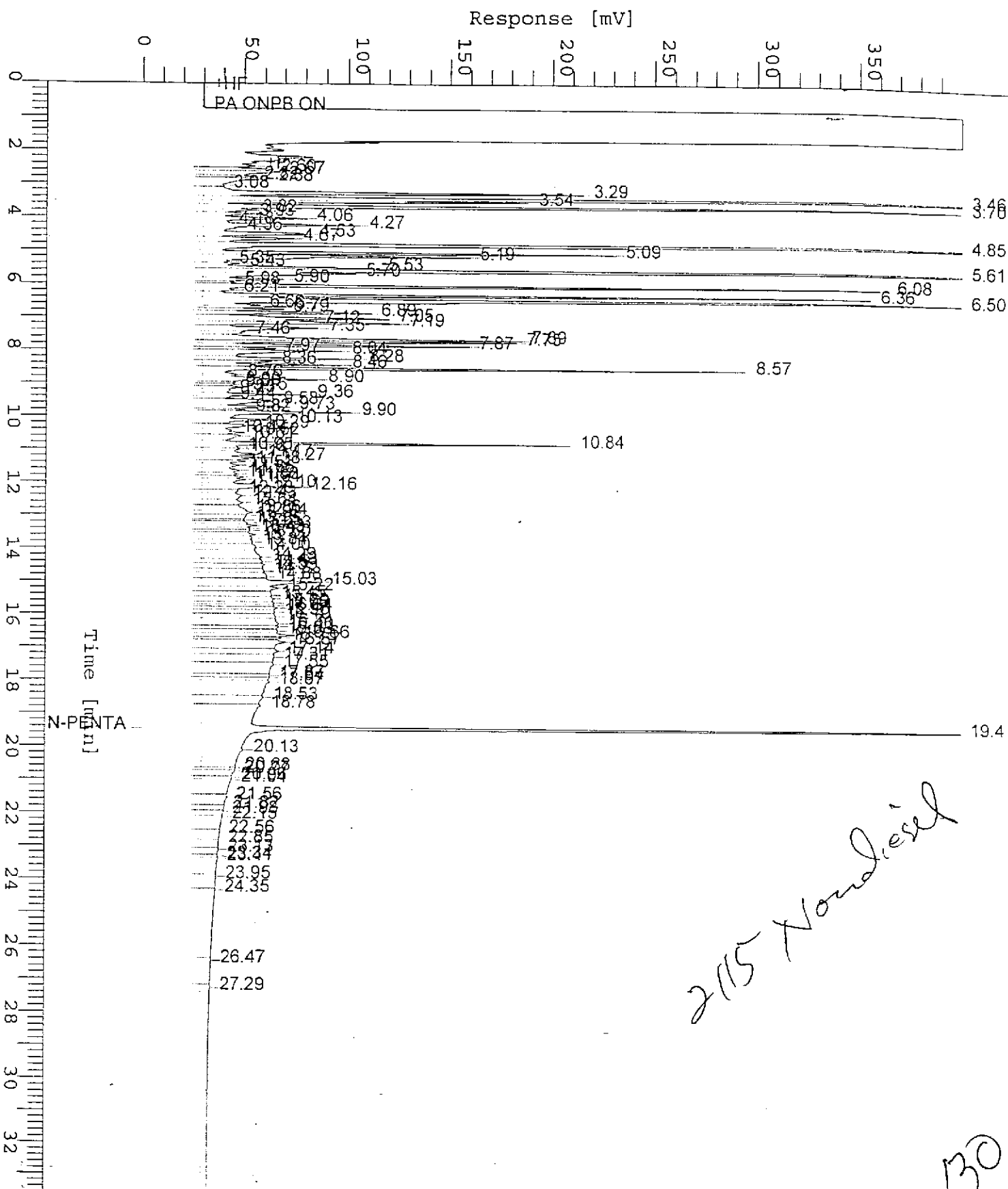
Chromatogram

Sample Name : 909683-01 (500:1)  
FileName : S:\GHP\_04\1003\928B030.raw  
Method : TPH04A  
Start Time : 0.00 min  
Scale Factor: 0.0

End Time : 33.65 min  
Plot Offset: 0 mV

Sample #: MW-1  
Date : 9/29/99 09:20  
Time of Injection: 9/29/99 08:46  
Low Point : 0.00 mV  
Plot Scale: 400.0 mV

Page 1 of 1  
High Point : 400.00 mV



30

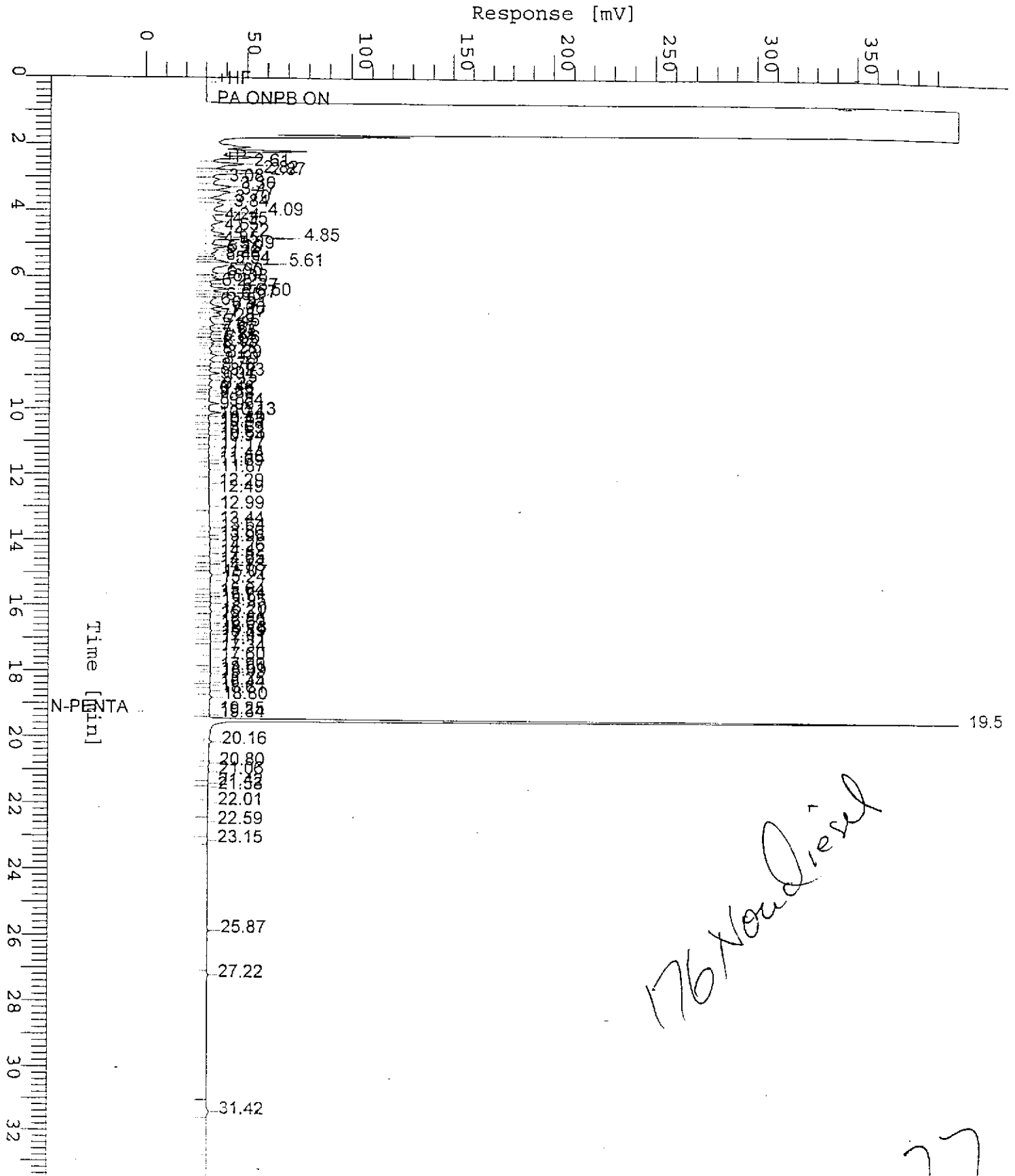
# Chromatogram

Sample Name : 909683-03 (500:1)  
FileName : S:\GHP\_04\1003\928B032.raw  
Method : TPH04A  
Start Time : 0.00 min  
Scale Factor: 0.0

End Time : 33.65 min  
Plot Offset: 0 mV

Sample #: MW-3A  
Date : 9/29/99 10:43  
Time of Injection: 9/29/99 10:09  
Low Point : 0.00 mV  
Plot Scale: 400.0 mV

Page 1 of 1  
High Point : 400.00 mV



*176/No diesel*

*77*

# Chromatogram

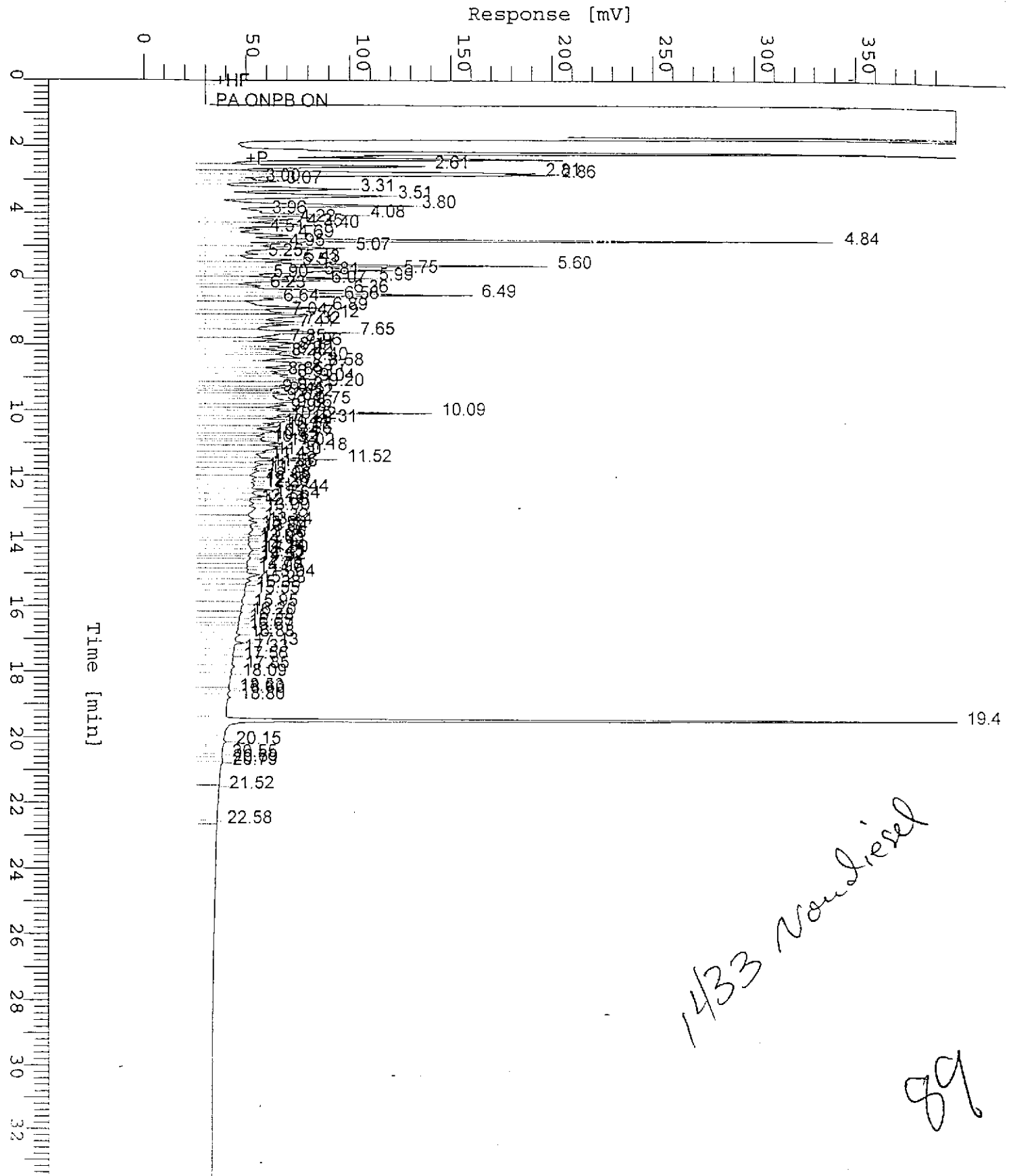
Sample Name : 9090683-04 (500:1)  
FileName : S:\GHP\_04\1003\928B033.raw  
Method : TPH04A  
Start Time : 0.00 min  
Scale Factor: 0.0

End Time : 33.65 min  
Plot Offset: 0 mV

Sample #: MW-4A  
Date : 9/29/99 11:24  
Time of Injection: 9/29/99 10:50  
Low Point : 0.00 mV  
Plot Scale: 400.0 mV

Page 1 of 1

High Point : 400.00 mV



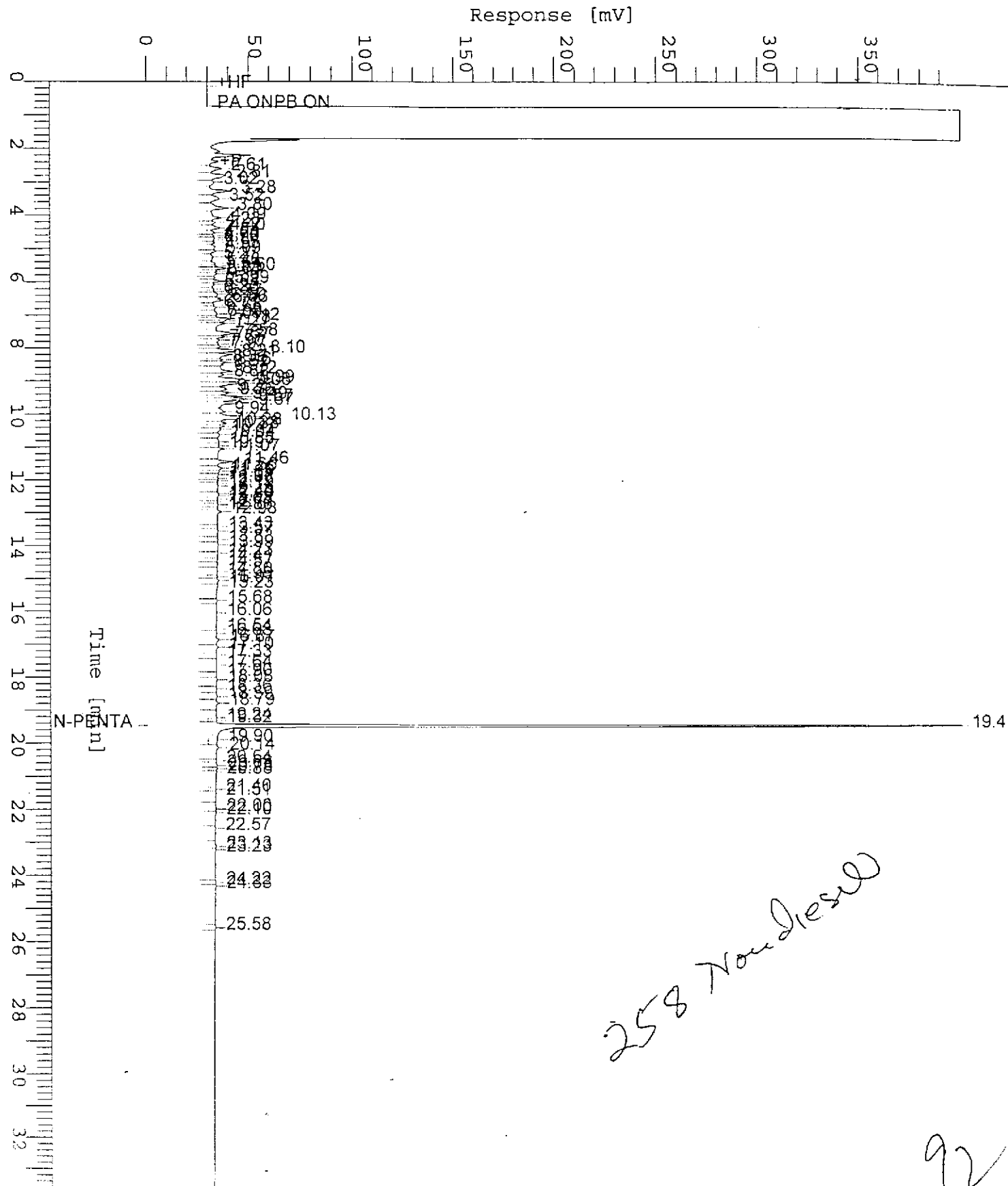
1433 Nonlinear  
89

# Chromatogram

Sample Name : 909683-06 (500:1)  
FileName : S:\GHP\_04\1003\928B038.raw  
Method : TPH04A  
Start Time : 0.00 min  
Scale Factor: 0.0

End Time : 33.65 min  
Plot Offset: 0 mV

Sample #: MW-6  
Date : 9/29/99 14:50  
Time of Injection: 9/29/99 14:16  
Low Point : 0.00 mV  
High Point : 400.00 mV  
Plot Scale: 400.0 mV

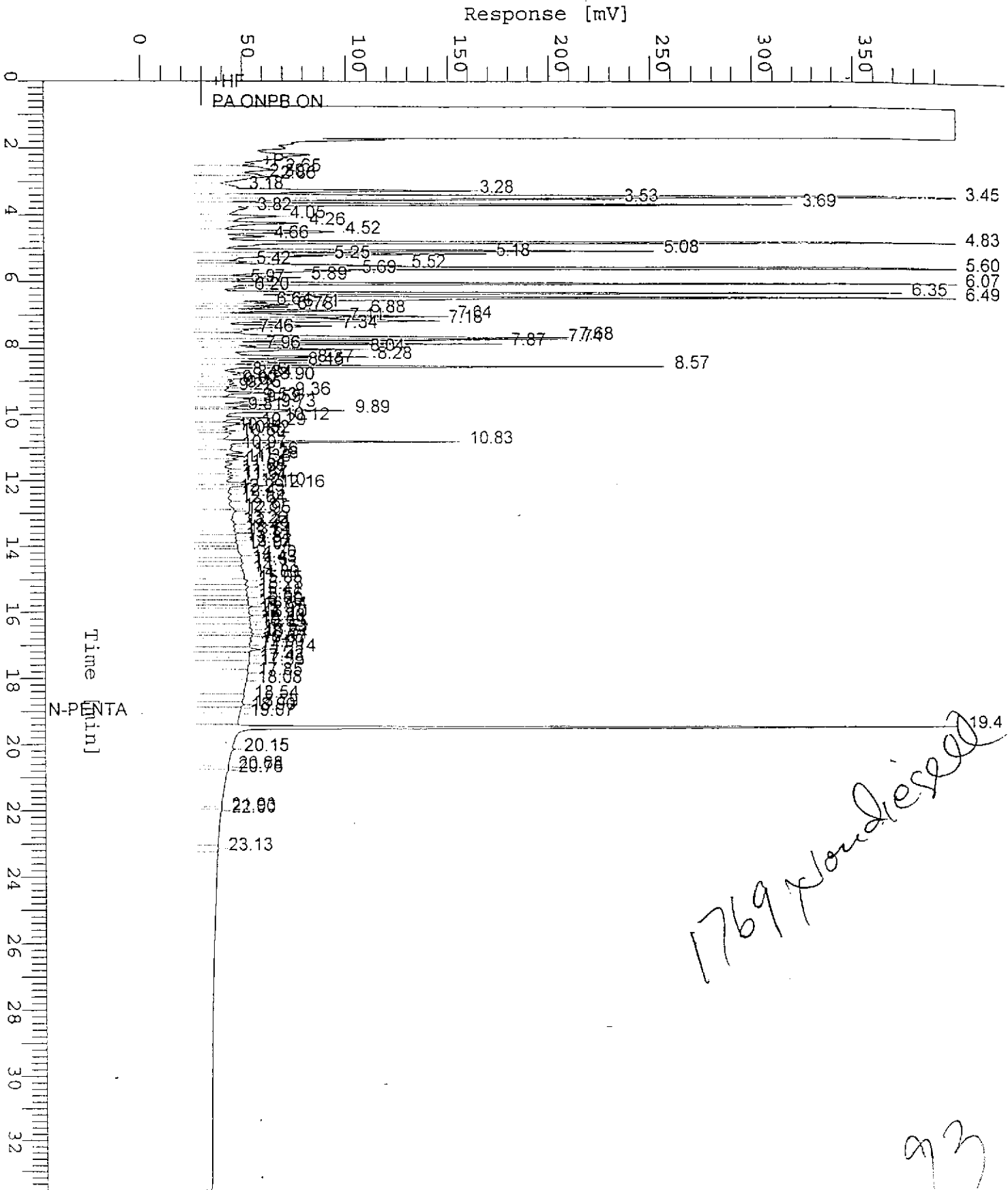


# Chromatogram

Sample Name : 909683-07 (500:1)  
FileName : S:\GHP\_04\1003\928B039.raw  
Method : TPH04A  
Start Time : 0.00 min  
Scale Factor: 0.0

End Time : 33.65 min  
Plot Offset: 0 mV

Sample #: MW-9  
Date : 9/29/99 15:31  
Time of Injection: 9/29/99 14:57  
Low Point : 0.00 mV  
Plot Scale: 400.0 mV  
High Point : 400.00 mV



# Chromatogram

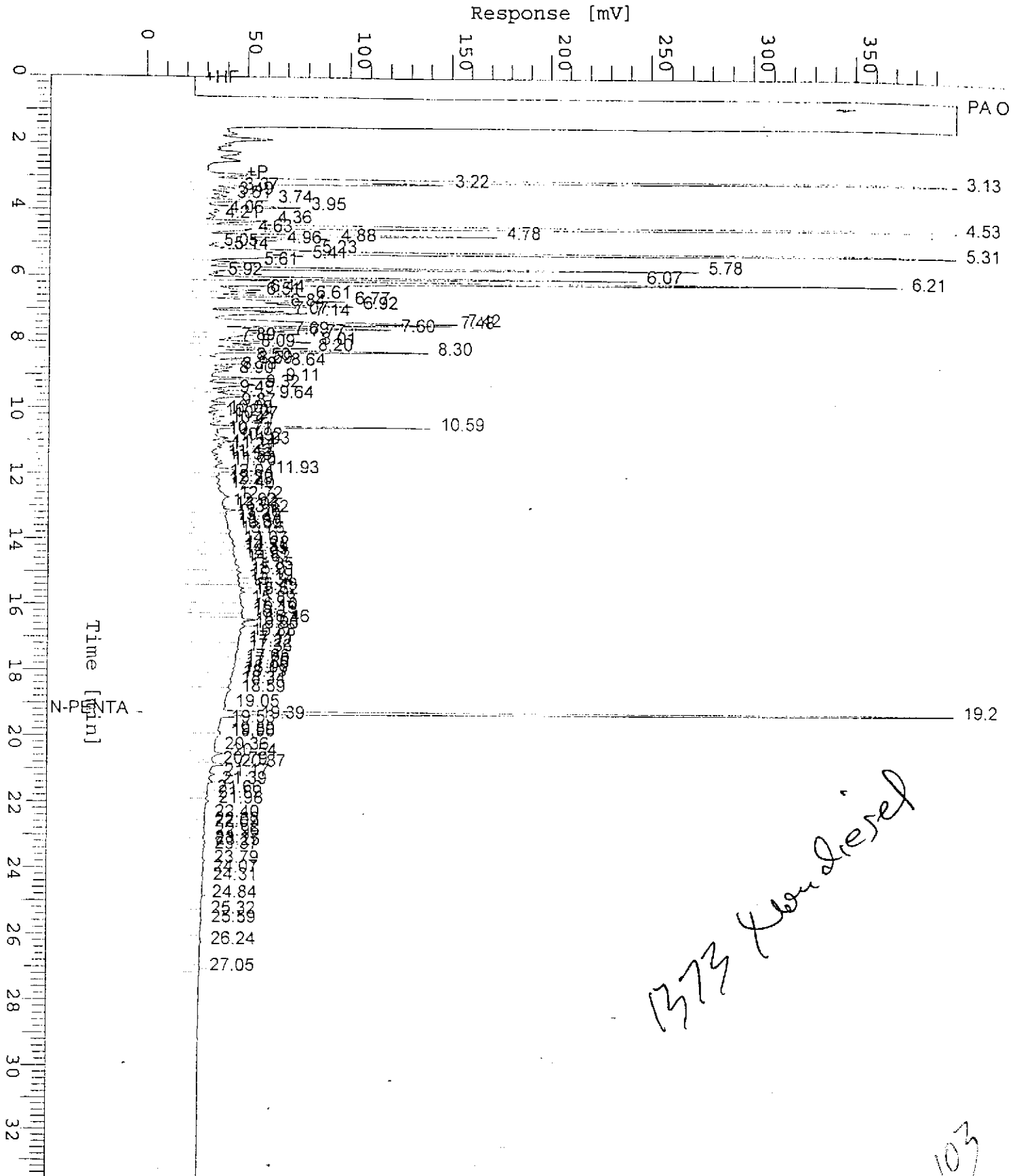
Sample Name : M909683-02 (500:1)  
FileName : S:\GHP\_05\1017\011A031.raw  
Method : TPH05A  
Start Time : 0.00 min  
Scale Factor: 0.0

End Time : 33.65 min  
Plot Offset: 0 mV

Sample #: MW-2A  
Date : 10/12/99 06:42  
Time of Injection: 10/12/99 06:08  
Low Point : 0.00 mV  
Plot Scale: 400.0 mV

Page 1 of 1

High Point : 400.00 mV

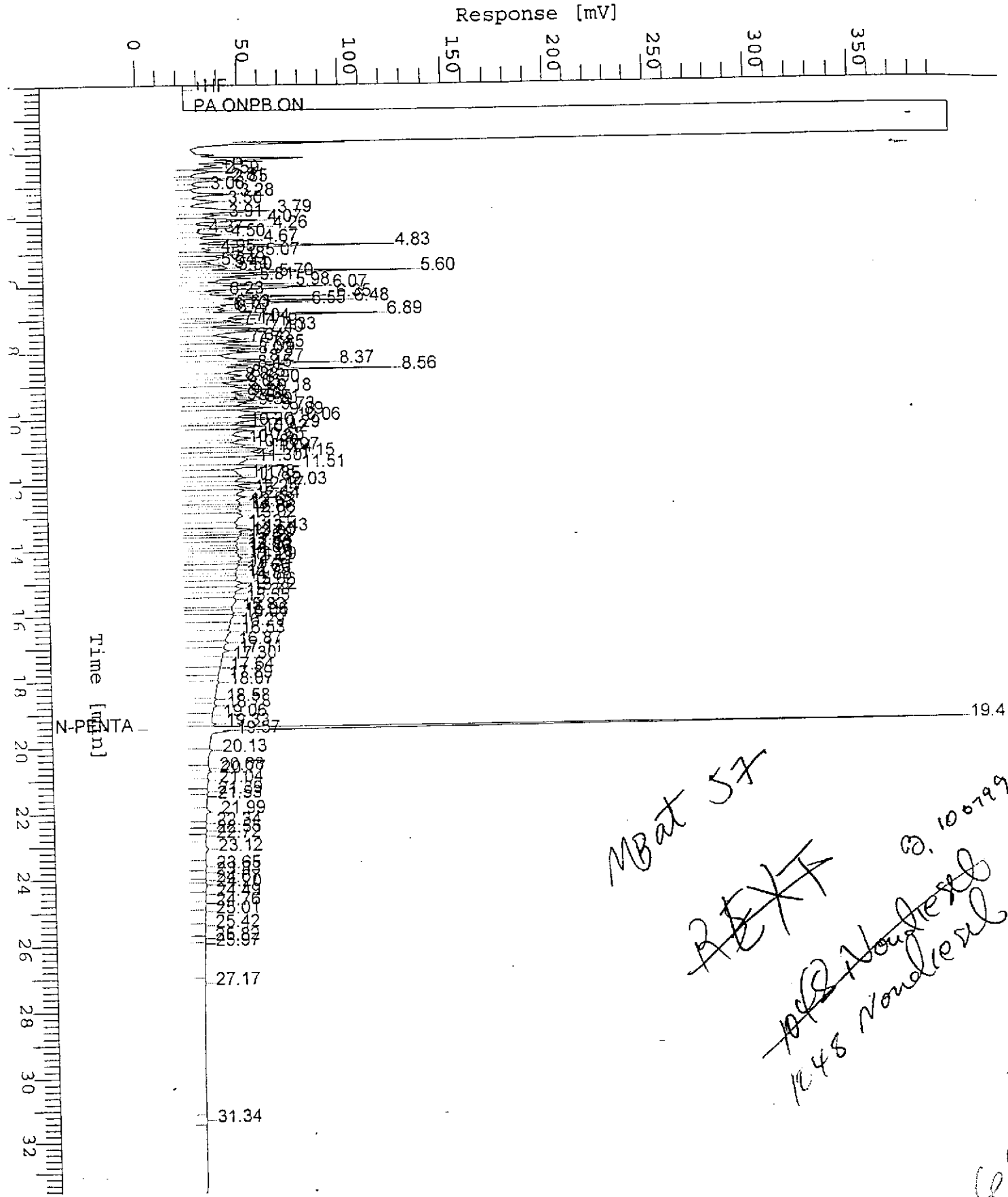


20 10 0799

Name : M909683-02 (500:1)  
me : S:\GHP\_04\1010\106B019.raw  
: TPH04A  
Time : 0.00 min  
Factor: 0.0

End Time : 33.65 min  
Plot Offset: 0 mV

Sample #: MW-3A  
Date : 10/7/99 03:47  
Time of Injection: 10/7/99 03:13  
Low Point : 0.00 mV  
Plot Scale: 400.0 mV  
High Point : 400.00 mV



Mbat 57

~~TEXT~~

10/8/99  
1048 nondescript  
10.10.99

cef





# **Field Data Sheets**



## CHEVRON WELL MONITORING DATA SHEET

Project #: 990917-C2	Station #: 9-0121
Sampler: Malcolm	Date: 9/17/99
Well I.D.: MW-1	Well Diameter: 2 3 <u>4</u> 6 8
Total Well Depth: 19.10	Depth to Water: 6.59
Depth to Free Product:	Thickness of Free Product (feet):
Referenced to: <u>PVC</u> Grade	D.O. Meter (if req'd): YSI <u>HACH</u>

Well Diameter	Multiplier	Well Diameter	Multiplier
2"	0.16	5"	1.02
3"	0.37	6"	1.47
4"	0.65	Other	radius <sup>2</sup> * 0.163

Purge Method: Bailer  
 Disposable Bailer  
 Middleburg  
~~Electric Submersible~~  
 Extraction Pump  
 Other: \_\_\_\_\_

Sampling Method: Bailer  
~~Disposable Bailer~~  
 Extraction Port  
 Other: \_\_\_\_\_

8.1	x	3	=	24.3	Gals.
1 Case Volume (Gals.)		Specified Volumes		Calculated Volume	

Time	Temp (°F)	pH	Cond.	Gals. Removed	Observations
1144	70.3	8.4	8200	8	
1145	71.0	7.5	2595	17	
1147	72.1	6.9	1520	25	

Did well dewater? Yes  No  Gallons actually evacuated: 25

Sampling Time: 1155 Sampling Date: 9/17/99

Sample I.D.: MW-1 Laboratory: Sequoia CORE N. Creek Assoc. Labs

Analyzed for: TPH-G BTEX MTBE TPH-D Other: \_\_\_\_\_

Duplicate I.D.: \_\_\_\_\_ Analyzed for: TPH-G BTEX MTBE TPH-D Other: \_\_\_\_\_

D.O. (if req'd):	Pre-purge: 1.6 <sup>mg/L</sup>	Post-purge: _____
G.R.P. (if req'd):	Pre-purge: _____	Post-purge: _____

## CHEVRON WELL MONITORING DATA SHEET

Project #: <u>990917-C2</u>	Station #: <u>9-0121</u>
Sampler: <u>Malcolm</u>	Date: <u>9/17/99</u>
Well I.D.: <u>MW-2A</u>	Well Diameter: <u>2</u> 3 4 6 8
Total Well Depth: <u>17.50</u>	Depth to Water: <u>5.84</u>
Depth to Free Product:	Thickness of Free Product (feet):
Referenced to: <u>PVC</u> Grade	D.O. Meter (if req'd): YSI HACH

Well Diameter	Multiplier	Well Diameter	Multiplier
2"	0.16	5"	1.02
3"	0.37	6"	1.47
4"	0.65	Other:	radius <sup>2</sup> * 0.163

Purge Method: Bailer      Sampling Method: Bailer  
~~Disposable Bailer~~      ~~Disposable Bailer~~  
Middleburg      Extraction Port  
~~Electric Submersible~~      Other: \_\_\_\_\_  
Extraction Pump

Other: \_\_\_\_\_

<u>1.8</u>	X	<u>3</u>	=	<u>5.4</u>	Gals.
1 Case Volume (Gals.)		Specified Volumes		Calculated Volume	

Time	Temp (°F)	pH	Cond.	Gals. Removed	Observations
<u>1224</u>	<u>72.5</u>	<u>6.7</u>	<u>6130</u>	<u>2</u>	
<u>1228</u>	<u>71.3</u>	<u>6.8</u>	<u>6845</u>	<u>4</u>	
<u>1234</u>	<u>71.0</u>	<u>6.9</u>	<u>7025</u>	<u>6</u>	

Did well dewater?    Yes    No    Gallons actually evacuated: 6

Sampling Time: 1250    Sampling Date: 9/17/99

Sample I.D.: MW-2A    Laboratory: Sequoia CORE N. Creek Assoc. Labs

Analyzed for: TPH-G BTEX MTBE TPH-D Other: \_\_\_\_\_

Duplicate I.D.: \_\_\_\_\_ Analyzed for: TPH-G BTEX MTBE TPH-D Other: \_\_\_\_\_

D.O. (if req'd):	Pre-purge:	mg/L	Post-purge:	mg/L



Chevron ~~TEXACO~~ WELL MONITORING DATA SHEET

Project #: 990917-C2	Texaco ID#: 9-0121
Sampler: Malcolm	Date: 9/17/94
Well I.D.: MW-4A	Well Diameter: ② 3 4 6 8
Total Well Depth: 18.70	Depth to Water: 7.37
Depth to Free Product:	Thickness of Free Product:

All Measurements are referenced to TOC. Meter used is Myron LpDS pH/EC Meter. All temperatures taken in degrees Fahrenheit.

Well Diameter	Multiplier	Well Diameter	Multiplier
2"	0.17	5"	1.02
3"	0.38	6"	1.50
4"	0.66	8"	2.60
4.5"	0.83	Other	radius <sup>2</sup> * 0.164

Purge Method: S.S. Bailer  
 Teflon Bailer  
 Middleburg Disp Bailer  
 Electric Submersible  
 Extraction Pump  
 Other: \_\_\_\_\_

Sampling Method: S.S. Bailer  
 Teflon Bailer  
 Extraction Port  
 Other: Disp Bailer  
 i

<u>1.8</u>	x	<u>3</u>	=	<u>5.4</u>	Gals.
1 Case Volume (Gals.)		Specified Volumes		Calculated Volume	

Time	Temp (°F)	pH	Cond.	Turbidity	Gals. Removed	Color/Odor
1323	73.3	7.7	5230	—	2	
1325	72.4	7.0	5175	—	4	
1327	70.8	7.0	6405	—	6	

Did well dewater? Yes  No

Gallons actually evacuated: 6

Sampling Time: 1340 Sampling Date: 9/17/94

Sample I.D.: MW-4A Laboratory: BC Analytical Sequoia

Analyzed for: Tph-G BTEX <sup>MTBE</sup> Tph-D Other: \_\_\_\_\_

Equipment Blank I.D.: Analyzed for same as primary sample

## CHEVRON WELL MONITORING DATA SHEET

Project #: 990917-02	Station #: 9-0121
Sampler: Malcolm	Date: 9/17/99
Well I.D.: MW-5	Well Diameter: <u>3</u> 3 4 6 8
Total Well Depth: 33.21	Depth to Water: 14.18
Depth to Free Product:	Thickness of Free Product (feet):
Referenced to: <u>(VOC)</u> Grade	D.O. Meter (if req'd): YSI HACH

Well Diameter	Multiplier	Well Diameter	Multiplier
2"	0.16	5"	1.02
3"	0.37	6"	1.47
4"	0.65	Other	radius <sup>2</sup> * 0.163

Purge Method:

Bailer  
~~Disposable Bailer~~  
 Middleburg  
 Electric Submersible  
 Extraction Pump

Sampling Method:

Bailer  
~~Disposable Bailer~~  
 Extraction Port

Other: \_\_\_\_\_

Other: \_\_\_\_\_

<u>3</u>	X	<u>3</u>	=	<u>9</u>	Gals.
1 Case Volume (Gals.)		Specified Volumes		Calculated Volume	

Time	Temp (°F)	pH	Cond.	Gals. Removed	Observations
9:48	65.3	6.7	1305	3	
9:53	65.1	6.8	1257	6	
9:57	64.8	6.9	1260	9	

Did well dewater? Yes  No  Gallons actually evacuated: 9

Sampling Time: 10:00 Sampling Date: 9/17/99

Sample I.D.: MW-5 Laboratory: Sequoia CORE N. Creek Assoc. Labs

Analyzed for: TPH-G BTEX MTBE TPH-D Other: \_\_\_\_\_

Duplicate I.D.: \_\_\_\_\_ Analyzed for: TPH-G BTEX MTBE TPH-D Other: \_\_\_\_\_

D.O. (if req'd):	Pre-purge:	mg/L	Post-purge:	mg/L
------------------	------------	------	-------------	------

O.R.P. (if req'd):	Pre-purge:	mV	Post-purge:	mV
--------------------	------------	----	-------------	----

# Chevron TEXACO WELL MONITORING DATA SHEET

Project #: 990917-C2	Texaco ID#: 9-0121
Sampler: Malcolm	Date: 9/17/99
Well I.D.: MW-9	Well Diameter: ② 3 4 6 8
Total Well Depth: 16.66	Depth to Water: 4.85
Depth to Free Product:	Thickness of Free Product:

All Measurements are referenced to TOC. Meter used is Myron LpDS pH/EC Meter. All temperatures taken in degrees Fahrenheit.

Well Diameter	Multiplier	Well Diameter	Multiplier
2"	0.17	5"	1.02
3"	0.38	6"	1.50
4"	0.66	8"	2.60
4.5"	0.83	Other	radius <sup>2</sup> * 0.164

Purge Method: S.S. Bailer  
 Teflon Bailer  
 Middleburg  
 Electric Submersible  
 Extraction Pump  
 Other: Drip Bailer

Sampling Method: S.S. Bailer  
 Teflon Bailer  
 Extraction Port  
 Other: Drip Bailer

1.9	x	3	=	5.7	Gals.
1 Case Volume (Gals.)		Specified Volumes		Calculated Volume	

Time	Temp (°F)	pH	Cond.	Turbidity	Gals. Removed	Color/Odor
1403	71.3	7.0	1230		2	
1405	71.0	6.8	1210		4	
1408	70.8	6.8	1795		6	

Did well dewater? Yes <input checked="" type="checkbox"/> No	Gallons actually evacuated: 6
Sampling Time: 1415	Sampling Date: 9/17/99
Sample I.D.: MW-9	Laboratory: BC Analytical <u>Sequoia</u>
Analyzed for: <u>Tph-G BTEX Tph-D</u>	Other: <u>MTBE</u>
Equipment Blank I.D.:	analyzed for same as primary sample