

BLAINE
TECH SERVICES INC



1680 ROGERS AVENUE
SAN JOSE, CALIFORNIA 95112
(408) 573-7771 FAX
(408) 573-0555 PHONE

March 31, 1998

Phil Briggs
Chevron U.S.A. Products Company
P.O. Box 6004
San Ramon, CA 94583-0904

1st Quarter 1998 Monitoring at 9-0121

First Quarter 1998 Groundwater Monitoring at
Chevron Service Station Number 9-0121
3026 Lakeshore Avenue
Oakland, CA

Monitoring Performed on February 16, 1998

Groundwater Sampling Report 980216-H-2

This report covers the routine monitoring of groundwater wells at this Chevron facility. Blaine Tech Services, Inc.'s work at the site includes inspection, gauging, evacuation, purgewater containment, sample collection and sample handling in accordance with standard procedures that conform to Regional Water Quality Control Board requirements.

Routine field data collection includes depth to water, total well depth, thickness of any separate immiscible layer, water column volume, calculated volume of a three-case volume purge, elapsed evacuation time, total volume of water removed, and standard water parameter instrument readings. Sample material is collected, contained, stored, and transported to the laboratory in conformance with EPA standards. Purgewater is, likewise, collected and transported to McKittrick Waste Treatment Site for disposal.

Basic field information is presented alongside analytical values excerpted from the laboratory report in the cumulative table of **WELL DATA AND ANALYTICAL RESULTS**. The full analytical report for the most recent samples is located in the **Analytical Appendix**. The table

also contains new groundwater elevation calculations taken from the computer plotted gradient map which is located in the **Professional Engineering Appendix**.

At a minimum, Blaine Tech Services, Inc. field personnel are certified upon completion of a forty-hour Hazardous Materials and Emergency Response training course per 29 CFR 1910.120. Field personnel are also enrolled in annual eight hour refresher courses.

Blaine Tech Services, Inc. conducts sampling and documentation assignments of this type as an independent third party. In order to avoid compromising the objectivity necessary for the proper and disinterested performance of this work, Blaine Tech Services, Inc. concentrates on objective data collection and does not participate in the interpretation of analytical results, the definition of geological or hydrological conditions, the formulation of recommendations, or the marketing of remedial systems.

Please call if you have any questions.

Yours truly,

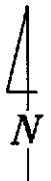
A handwritten signature in black ink, appearing to read "Francis Thie", is written over a light blue horizontal line.

Francis Thie
Vice President

FPT/ck

attachments: Professional Engineering Appendix
Cumulative Table of Well Data and Analytical Results
Analytical Appendix
Field Data Sheets

Professional Engineering Appendix

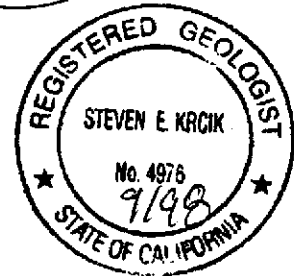
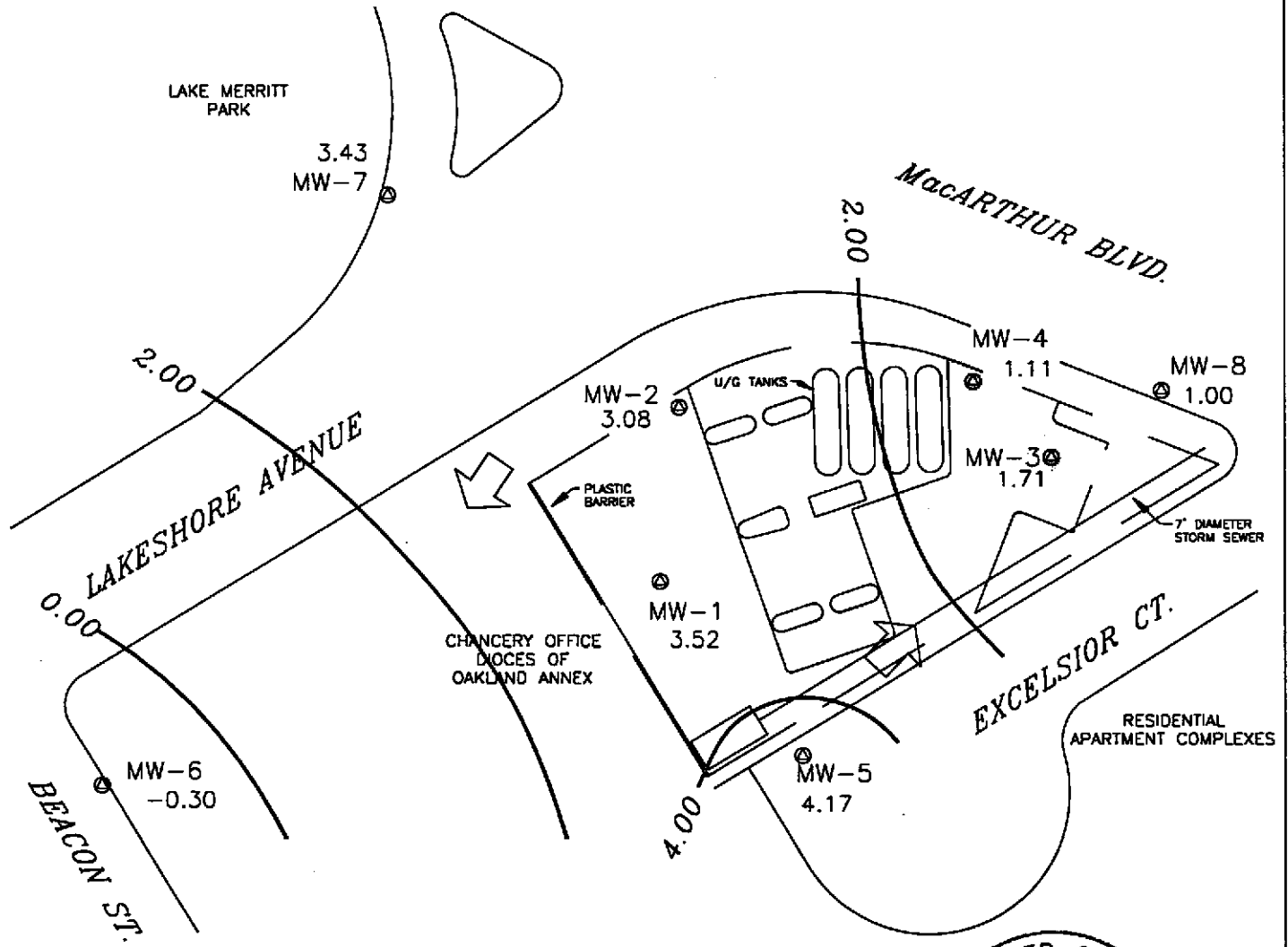


SCALE (ft)



EXPLANATION

- ⊙ MONITORING WELL LOCATION
- 3.08 GROUNDWATER ELEVATION (FT, MSL)
- 0.00 — GROUNDWATER ELEVATION CONTOUR (FT, MSL)
- ⇨ APPROXIMATE GROUNDWATER FLOW DIRECTION;
APPROXIMATE GRADIENT = 0.02



Basemap from Geoconsultants, Inc.

PREPARED BY

RRM
engineering contracting firm

Chevron Station 9-0121
3026 Lakeshore Avenue
Oakland, California

GROUNDWATER ELEVATION CONTOUR MAP,
FEBRUARY 16, 1998

FIGURE:
I

PROJECT:
DAC04

Table of Well Data and Analytical Results

Cumulative Table of Well Data and Analytical Results

Vertical Measurements are in feet.

Volumetric Measurements are in gallons.

Analytical results are in parts per billion (ppb)

DATE	Well Head Elev.	Ground Water Elev.	Depth To Water	SPH Thickness	SPH Removed	Total SPH Removed	Notes	Analytical results are in parts per billion (ppb)							
								TPH-Gasoline	Benzene	Toluene	Ethyl-Benzene	Xylene	TPH-Diesel	TDS	MTBE
MW-1															
08/20/91	6.82	1.62	5.20	--	--	--	--	5100	1700	21	220	34	260	--	--
09/30/91	6.82	1.15	5.67	Sheen	--	--	--	--	--	--	--	--	--	--	--
10/28/91	6.82	1.50	5.30	0.03	--	--	--	--	--	--	--	--	--	--	--
01/08/92	6.82	1.67	5.15	Sheen	--	--	--	5400	770	13	95	31	4400	--	--
01/13/92	6.82	--	--	--	--	--	--	--	--	--	--	--	--	--	--
06/23/92	6.89	1.48	5.41	--	--	--	--	7700	1500	40	230	100	2000	--	--
08/24/92	6.89	1.12	5.77	--	--	--	--	--	--	--	--	--	--	--	--
09/21/92	6.89	1.00	5.89	--	--	--	--	3500	1700	28	190	78	<50	--	--
10/26/92	6.89	0.95	5.94	--	--	--	--	--	--	--	--	--	--	--	--
12/23/92	6.89	2.18	4.71	--	--	--	--	60,000	7100	240	2000	1300	5500	--	--
01/08/93	6.89	--	--	--	--	--	--	--	--	--	--	--	--	--	--
03/25/93	6.89	2.17	4.72	--	--	--	--	530	1100	41	67	79	<10	--	--
06/11/93	6.89	5.37	5.07	--	--	--	--	7000	1900	33	120	69	--	840	9600
09/29/93	6.89	1.13	5.76	--	--	--	--	6600	1600	28	43	74	<10	--	--
12/20/93	6.89	1.74	5.15	--	--	--	--	6300	1900	36	82	65	<10	--	--
03/07/94	6.89	2.21	4.68	--	--	--	--	7700	1100	55	66	38	<10	--	12,000
06/17/94	6.89	1.83	5.06	--	--	--	--	4300	710	12	90	38	2200	--	--
09/12/94	6.89	1.24	5.65	--	--	--	--	6400	1500	<25	180	<25	2500	--	12,000
11/30/94	6.89	2.32	4.57	--	--	--	--	4900	690	26	97	60	2300*	--	3900
03/24/95	6.89	3.91	2.98	--	--	--	--	1800	160	7.3	11	14	1400**	--	1300
06/27/95	6.89	1.87	5.02	--	--	--	--	4600	1300	11	97	13	2300**	--	5100
09/28/95	6.89	1.59	5.30	--	--	--	--	6600	1500	<20	<20	<20	3900**	--	5800
12/19/95	6.89	2.21	4.68	--	--	--	--	3800	930	<10	100	<10	2600**	--	6300
02/28/96	6.89	3.27	3.62	--	--	--	--	3600	280	<5.0	18	5.5	1800**	--	2200
06/25/96	6.89	1.87	5.02	--	--	--	--	4700	1600	36	150	31	3000	--	3000
12/17/96	6.89	2.23	4.66	--	--	--	--	7800	1000	28	340	63	2700***	--	1200
03/31/97	6.89	2.01	4.88	--	--	--	--	5300	590	55	210	53	2200**	--	950
06/30/97	6.89	1.32	5.57	--	--	--	--	4400	350	<10	<10	11	2200**	--	580
09/12/97	6.89	1.56	5.33	--	--	--	--	3400	220	9.5	15	11	2300**	--	460
12/05/97	6.89	2.44	4.45	--	--	--	--	4700	870	21	120	18	1900**	--	750
02/16/98	6.89	3.52	3.37	--	--	--	--	4400	120	12	11	7.7	1600**	--	270

* Chromatogram pattern indicates a non-diesel mix.

** Chromatogram pattern indicates an unidentified hydrocarbon.

*** Chromatogram pattern indicates an unidentified hydrocarbon and weathered diesel.

Cumulative Table of Well Data and Analytical Results

Vertical Measurements are in feet.

Volumetric Measurements are in gallons.

Analytical results are in parts per billion (ppb)

DATE	Well Head Elev.	Ground Water Elev.	Depth To Water	SPH Thickness	SPH Removed	Total SPH Removed	Notes	TPH-Gasoline	Benzene	Toluene	Ethyl-Benzene	Xylene	TPH-Diesel	TDS	MTBE
MW-2															
08/20/91	6.27	1.92	4.35	--	--	--	--	9300	3700	55	530	75	600	--	--
09/30/91	6.27	1.28	4.99	--	--	--	--	3500	2600	47	440	68	--	--	--
10/28/91	6.27	1.36	4.91	--	--	--	--	4600	1800	29	290	53	--	--	--
01/08/92	6.27	1.63	4.64	Sheen	--	--	--	14,000	4300	70	<25	130	--	--	--
01/13/92	6.27	--	--	--	--	--	--	--	--	--	--	--	38,000	--	--
06/23/92	6.27	1.63	4.64	0.02	--	--	--	--	--	--	--	--	--	--	--
08/24/92	6.27	1.34	4.94	0.02	--	--	--	--	--	--	--	--	--	--	--
09/21/92	6.27	1.20	5.08	0.01	--	--	--	--	--	--	--	--	--	--	--
10/26/92	6.27	0.34	5.93	--	--	--	--	--	--	--	--	--	--	--	--
12/23/92	6.27	--	--	--	--	--	--	21,000	5400	59	1300	160	160,000	--	--
01/08/93	6.27	2.57	3.70	--	--	--	--	--	--	--	--	--	--	--	--
03/25/93	6.27	2.89	3.38	Sheen	--	--	--	--	--	--	--	--	--	--	--
06/11/93	6.27	2.09	4.18	--	--	--	--	5900	1100	23	240	51	--	2300	--
09/29/93	6.27	0.07	6.20	--	--	--	--	--	--	--	--	--	--	--	--
12/20/93	6.27	1.94	4.35	0.02	--	--	--	--	--	--	--	--	--	--	--
03/07/94	6.27	2.60	3.67	--	--	--	--	26,000	5700	170	1000	150	<10	--	--
06/17/94	6.27	2.25	4.02	Sheen	--	--	--	--	--	--	--	--	--	--	--
09/12/94	6.27	1.45	4.83	0.01	--	--	--	--	--	--	--	--	--	--	--
11/30/94	6.27	2.27	4.00	--	--	--	Inaccessible	--	--	--	--	--	--	--	--
03/24/95	6.27	2.73	4.01	0.59	--	--	--	--	--	--	--	--	--	--	--
06/27/95	6.27	1.71	4.96	0.50	0.013	0.013	--	--	--	--	--	--	--	--	--
09/28/95	6.27	2.62	4.25	0.75	0.013	0.026	--	--	--	--	--	--	--	--	--
12/19/95	6.27	1.99	4.76	0.60	0.010	0.036	--	--	--	--	--	--	--	--	--
02/28/96	6.27	1.99	4.58	0.38	0.008	0.044	--	--	--	--	--	--	--	--	--
06/25/96	6.27	2.36	4.29	0.47	0.030	0.074	--	--	--	--	--	--	--	--	--
12/17/96	6.27	2.22	4.16	0.14	--	0.074	--	--	--	--	--	--	--	--	--
03/31/97	6.27	2.34	4.07	0.18	0.030	0.104	--	--	--	--	--	--	--	--	--
06/30/97	6.27	2.06	4.32	0.14	0.030	0.134	--	--	--	--	--	--	--	--	--
09/12/97	6.27	2.00	4.38	0.14	--	0.134	--	--	--	--	--	--	--	--	--
12/05/97	6.27	2.51	3.78	0.02	--	0.134	--	--	--	--	--	--	--	--	--
02/16/98	6.27	3.08	3.29	0.12	0.007	0.141	--	--	--	--	--	--	--	--	--

Cumulative Table of Well Data and Analytical Results

Vertical Measurements are in feet.

Volumetric Measurements are in gallons.

Analytical results are in parts per billion (ppb)

DATE	Well Head Elev.	Ground Water Elev.	Depth To Water	SPH Thickness	SPH Removed	Total SPH Removed	Notes	TPH-Gasoline	Benzene	Toluene	Ethyl-Benzene	Xylene	TPH-Diesel	TDS	MTBE
MW-3															
08/20/91	8.71	0.26	8.45	--	--	--	--	3100	200	13	15	12	200	--	--
09/30/91	8.71	-0.03	8.74	--	--	--	--	1000	150	8.3	13	6.7	--	--	--
10/28/91	8.71	-0.05	8.76	--	--	--	--	1200	120	6.7	11	7.5	--	--	--
01/08/92	8.71	-0.06	8.77	--	--	--	--	410	120	0.9	4.1	3.4	--	--	--
01/13/92	8.71	--	--	--	--	--	--	--	--	--	--	--	220	--	--
06/23/92	8.71	0.03	8.68	--	--	--	--	630	43	0.8	8.2	3.4	<50	--	--
08/24/92	8.71	-0.14	8.85	--	--	--	--	--	--	--	--	--	--	--	--
09/21/92	8.71	-0.23	8.94	--	--	--	--	1800	730	1.4	66	39	<50	--	--
10/26/92	8.71	-0.36	9.07	--	--	--	--	--	--	--	--	--	--	--	--
12/23/92	8.71	--	--	--	--	--	--	840	270	3.4	15	4.2	850	--	--
01/08/93	8.71	1.02	7.69	--	--	--	--	--	--	--	--	--	--	--	--
03/25/93	8.71	0.97	7.74	--	--	--	--	760	270	4.0	10	5.0	<10	--	--
06/11/93	8.71	0.19	8.52	--	--	--	--	200	32	1.0	5.0	2.0	--	5600	--
09/29/93	8.71	2.66	6.05	--	--	--	--	9300	2800	60	270	62	--	--	--
12/20/93	8.71	-0.12	8.83	--	--	--	--	460	250	4.0	8.0	4.0	<10	--	--
03/07/94	8.71	0.64	8.07	--	--	--	--	2400	260	13	35	18	<10	--	--
06/17/94	8.71	0.19	8.52	--	--	--	--	1000	200	4.0	6.6	6.7	<50	--	--
09/12/94	8.71	-0.21	8.92	--	--	--	--	360	130	3.4	4.8	3.3	<50	--	130
11/30/94	8.71	0.58	8.13	--	--	--	Inaccessible	--	--	--	--	--	--	--	--
03/24/95	8.71	1.93	6.78	--	--	--	--	4100	920	<10	23	<10	1200*	--	70
06/27/95	8.71	0.49	8.22	--	--	--	--	3100	640	16	31	<10	1000*	--	<50
09/28/95	8.71	-0.14	8.85	--	--	--	--	490	78	3.4	4.4	2.4	460*	--	38
12/19/95	8.71	0.69	8.02	--	--	--	--	2600	580	<10	25	<10	650*	--	<50
02/28/96	8.71	1.16	7.55	--	--	--	--	1500	510	<5.0	9.9	<5.0	780*	--	<25
06/25/96	8.71	0.34	8.37	--	--	--	--	1300	390	7.8	14	6.5	1200*	--	31
12/17/96	8.71	0.41	8.30	--	--	--	--	760	85	<1.2	5.9	5.1	1100*	--	<6.2
03/31/97	8.71	0.52	8.19	--	--	--	--	2000	380	12	24	12	1300*	--	<25
06/30/97	8.71	0.00	8.71	--	--	--	--	1900	340	9.9	23	6.1	620*	--	<25
09/12/97	8.71	1.07	7.64	--	--	--	--	1200	200	4.6	14	4.8	400*	--	3.9
12/05/97	8.71	0.46	8.25	--	--	--	--	460	72	2.7	5.2	1.7	190*	--	<5.0
02/16/98	8.71	1.71	7.00	--	--	--	--	6200	1100	.20	34	12	1000*	--	<50

* Chromatogram pattern indicates an unidentified hydrocarbon.

Cumulative Table of Well Data and Analytical Results

Vertical Measurements are in feet.

Volumetric Measurements are in gallons.

Analytical results are in parts per billion (ppb)

DATE	Well Head Elev.	Ground Water Elev.	Depth To Water	SPH Thickness	SPH Removed	Total SPH Removed	Notes	TPH-Gasoline	Benzene	Toluene	Ethyl-Benzene	Xylene	TPH-Diesel	TDS	MTBE
MW-4															
08/20/91	7.37	1.32	5.05	--	--	--	--	1800	870	4.0	3.0	9.0	160	--	--
09/30/91	7.37	1.70	5.67	--	--	--	--	670	830	5.5	2.7	12	--	--	--
10/28/91	7.37	1.56	5.81	--	--	--	--	2800	990	5.8	4.8	19	--	--	--
01/08/92	7.37	2.03	5.34	--	--	--	--	2900	1200	10	7.0	18	--	--	--
01/13/92	7.37	--	--	--	--	--	--	--	--	--	--	--	1000	--	--
06/23/92	7.37	2.00	5.37	--	--	--	--	1600	380	6.5	3.0	12	<50	--	--
08/24/92	7.37	1.62	5.75	--	--	--	--	--	--	--	--	--	--	--	--
09/21/92	7.37	1.42	5.95	--	--	--	--	1200	480	5.6	3.7	11	<50	--	--
10/26/92	7.37	1.41	5.96	--	--	--	--	--	--	--	--	--	--	--	--
12/23/92	7.37	--	--	--	--	--	--	1500	700	3.6	3.2	11	1800	--	--
01/08/93	7.37	2.73	4.64	--	--	--	--	--	--	--	--	--	--	--	--
03/25/93	7.37	2.95	4.42	--	--	--	--	520	160	3.0	1.0	4.0	<10	--	--
06/11/93	7.37	2.25	5.12	--	--	--	--	1200	430	5.0	6.0	11	--	2600	--
09/29/93	7.37	1.57	5.80	--	--	--	--	1300	210	8.0	2.0	14	--	--	--
12/20/93	7.37	2.27	5.10	--	--	--	--	570	230	5.0	4.0	8.0	3900	--	--
03/07/94	7.37	2.36	5.01	--	--	--	--	2200	290	18	2.5	11	2600	--	22,000
06/17/94	7.37	1.55	5.82	--	--	--	--	2100	480	11	4.3	9.5	2800	--	--
09/12/94	7.37	1.73	5.64	--	--	--	--	1700	340	6.1	2.7	9.7	3000	--	63,000
11/30/94	7.37	1.79	5.58	--	--	--	Inaccessible	--	--	--	--	--	--	--	--
03/24/95	7.37	2.42	4.95	--	--	--	--	1500	280	<5.0	<5.0	6.9	3000*	--	12,000
06/27/95	7.37	-1.42	8.79	--	--	--	--	<10,000	310	<100	<100	<100	3100*	--	32,000
09/28/95	7.37	1.52	5.85	--	--	--	--	330	64	1.1	<0.5	<0.5	6300*	--	630
12/19/95	7.37	1.87	5.50	--	--	--	--	3000	520	<25	<25	<25	3400*	--	44,000
02/28/96	7.37	2.27	5.10	--	--	--	--	<10,000	230	<100	<100	<100	4700*	--	32,000
06/25/96	7.37	1.59	5.78	--	--	--	--	<10000	160	<100	<100	<100	3100	--	31,000
12/17/96	7.37	1.42	5.95	--	--	--	--	<5000	110	<50	<50	<50	3600**	--	22,000
03/31/97	7.37	1.75	5.62	--	--	--	--	<2500	130	<25	<25	<25	2700*	--	16,000
06/30/97	7.37	1.34	6.03	--	--	--	--	<2500	130	<25	<25	<25	2700*	--	14,000
09/12/97	7.37	1.68	5.69	--	--	--	--	<5000	63	<50	<50	<50	2100*	--	15,000
12/05/97	7.37	2.22	5.15	--	--	--	--	1300	120	<5.0	<5.0	8.5	2600*	--	15,000
02/16/98	7.37	1.11	6.26	--	--	--	--	1200	57	4.5	<2.5	7.0	1300*	--	12,000

* Chromatogram pattern indicates an unidentified hydrocarbon.

** Chromatogram pattern indicates an unidentified hydrocarbon and weathered diesel.

Cumulative Table of Well Data and Analytical Results

Vertical Measurements are in feet.

Volumetric Measurements are in gallons.

Analytical results are in parts per billion (ppb)

DATE	Well Head Elev.	Ground Water Elev.	Depth To Water	SPH Thickness	SPH Removed	Total SPH Removed	Notes	TPH-Gasoline	Benzene	Toluene	Ethyl-Benzene	Xylene	TPH-Diesel	TDS	MTBE
MW-5															
06/23/92	14.14	1.90	12.24	--	--	--	--	<50	<0.5	<0.5	<0.5	<0.5	<50	--	--
08/24/92	14.14	1.85	12.29	--	--	--	--	--	--	--	--	--	--	--	--
09/21/92	14.14	1.68	12.46	--	--	--	--	<50	<0.5	<0.5	<0.5	<0.5	60	--	--
10/26/92	14.14	1.62	12.52	--	--	--	--	--	--	--	--	--	--	--	--
12/23/92	14.14	3.02	11.12	--	--	--	--	--	--	--	--	--	--	--	--
01/08/93	14.14	--	--	--	--	--	--	--	--	--	--	--	--	--	--
03/25/93	14.14	4.40	9.74	--	--	--	--	<50	<0.5	<0.5	<0.5	0.9	<10	--	--
06/11/93	14.14	3.70	10.44	--	--	--	--	<50	<0.5	<0.5	<0.5	<0.5	--	770	--
09/29/93	14.14	2.22	11.92	--	--	--	--	<50	<0.5	0.6	<0.5	0.6	<10	--	--
12/20/93	14.14	--	--	--	--	--	--	--	--	--	--	--	--	--	--
03/07/94	14.14	2.80	11.34	--	--	--	--	<50	<0.5	<0.5	<0.5	<0.5	<10	--	--
06/17/94	14.14	2.87	11.27	--	--	--	--	<50	<0.5	<0.5	<0.5	<0.5	<50	--	--
09/12/94	14.14	1.28	12.86	--	--	--	--	<50	<0.5	<0.5	<0.5	<0.5	<50	--	<5.0
11/30/94	14.14	2.23	11.91	--	--	--	--	<50	<0.5	<0.5	<0.5	<0.5	99*	--	--
03/24/95	14.14	4.38	9.76	--	--	--	--	<50	<0.5	<0.5	<0.5	<0.5	<50	--	--
06/27/95	14.14	2.74	11.40	--	--	--	--	<50	<0.5	<0.5	<0.5	<0.5	55**	--	--
09/28/95	14.14	2.24	11.90	--	--	--	--	<50	<0.5	<0.5	<0.5	<0.5	300**	--	--
12/19/95	14.14	1.56	12.58	--	--	--	--	<50	<0.5	<0.5	<0.5	<0.5	53**	--	3.1
02/28/96	14.14	2.44	11.70	--	--	--	--	<50	<0.5	<0.5	<0.5	<0.5	<50	--	<2.5
06/25/96	14.14	2.71	11.43	--	--	--	--	<50	<0.5	<0.5	<0.5	<0.5	120**	--	36
12/17/96	14.14	2.74	11.40	--	--	--	--	<50	<0.5	<0.5	<0.5	<0.5	89**	--	<2.5
03/31/97	14.14	2.04	12.10	--	--	--	--	<50	<0.5	<0.5	<0.5	<0.5	150**	--	<2.5
06/30/97	14.14	1.36	12.78	--	--	--	Sampled blannually	--	--	--	--	--	--	--	--
09/12/97	14.14	0.46	13.68	--	--	--	--	<50	<0.5	<0.5	<0.5	<0.5	<50	--	<2.5
12/05/97	14.14	1.11	13.03	--	--	--	--	--	--	--	--	--	--	--	--
02/16/98	14.14	4.17	9.97	--	--	--	--	<50	<0.5	<0.5	<0.5	<0.5	62**	--	<2.5

* Chromatogram pattern indicates a non-diesel mix.

** Chromatogram pattern indicates an unidentified hydrocarbon.

Cumulative Table of Well Data and Analytical Results

Vertical Measurements are in feet.

Volumetric Measurements are in gallons.

Analytical results are in parts per billion (ppb)

DATE	Well Head Elev.	Ground Water Elev.	Depth To Water	SPH Thickness	SPH Removed	Total SPH Removed	Notes	TPH-Gasoline	Benzene	Toluene	Ethyl-Benzene	Xylene	TPH-Diesel	TDS	MTBE
MW-6															
06/23/92	4.46	-0.68	5.14	--	--	--	--	<50	4.3	<0.5	0.8	0.9	120	--	--
08/24/92	4.46	-0.49	4.95	--	--	--	--	--	--	--	--	--	--	--	--
09/21/92	4.46	-0.44	4.90	--	--	--	--	<250	<2.5	<2.5	<2.5	<2.5	<50	--	--
10/26/92	4.46	-1.06	5.52	--	--	--	--	--	--	--	--	--	--	--	--
12/23/92	4.46	-0.94	5.40	--	--	--	--	<50	<0.5	<0.5	<0.5	<0.5	81	--	--
01/08/93	4.46	--	--	--	--	--	--	--	--	--	--	--	--	--	--
03/25/93	4.46	-1.64	6.10	--	--	--	--	<50	<0.5	<0.5	<0.5	0.7	<10	--	--
06/11/93	4.46	-2.10	6.56	--	--	--	--	<50	<0.5	<0.5	<0.5	<0.5	--	15,000	--
09/29/93	4.46	-0.71	5.17	--	--	--	--	<50	<0.5	<0.5	<0.5	<0.5	<10	--	--
12/20/93	4.46	-1.47	5.93	--	--	--	--	<50	<0.5	<0.5	<0.5	<0.5	<10	--	--
03/07/94	4.46	-0.81	5.27	--	--	--	--	54	<0.5	<0.5	<0.5	0.6	<10	--	--
06/17/94	4.46	--	--	--	--	--	--	--	--	--	--	--	--	--	--
09/12/94	4.46	-0.64	5.10	--	--	--	--	<50	<0.5	<0.5	<0.5	<0.5	<50	--	<50
11/30/94	4.46	-1.12	5.58	--	--	--	--	<50	<0.5	<0.5	<0.5	<0.5	800*	--	--
03/24/95	4.46	-1.87	6.33	--	--	--	--	<50	<0.5	<0.5	<0.5	<0.5	490**	--	--
06/27/95	4.46	-3.74	8.20	--	--	--	--	<50	<0.5	<0.5	<0.5	<0.5	300**	--	--
09/28/95	4.46	-0.19	4.65	--	--	--	--	120	1.1	<0.5	<0.5	<0.5	1200**	--	--
12/19/95	4.46	-1.58	6.04	--	--	--	--	<50	<0.5	<0.5	<0.5	<0.5	820**	--	<2.5
02/28/96	4.46	-1.54	6.00	--	--	--	--	<50	<0.5	<0.5	<0.5	<0.5	270**	--	<2.5
06/25/96	4.46	-1.71	6.17	--	--	--	--	97	<0.5	<0.5	<0.5	0.71	750**	--	<2.5
12/17/96	4.46	-1.67	6.13	--	--	--	--	65	<0.5	<0.5	<0.5	<0.5	540**	--	<2.5
03/31/97	4.46	-2.23	6.69	--	--	--	--	65	<0.5	<0.5	<0.5	<0.5	780**	--	<2.5
06/30/97	4.46	-2.62	7.08	--	--	--	Sampled biannually	--	--	--	--	--	--	--	--
09/12/97	4.46	-0.95	5.41	--	--	--	--	65	<0.5	<0.5	<0.5	<0.5	270**	--	<2.5
12/05/97	4.46	-1.96	6.42	--	--	--	--	--	--	--	--	--	--	--	--
02/16/98	4.46	-0.30	4.76	--	--	--	--	140	<0.5	<0.5	<0.5	<0.5	330**	--	<2.5

* Chromatogram pattern indicates a non-diesel mix.

** Chromatogram pattern indicates an unidentified hydrocarbon.

Cumulative Table of Well Data and Analytical Results

Vertical Measurements are in feet.

Volumetric Measurements are in gallons.

Analytical results are in parts per billion (ppb)

DATE	Well Head Elev.	Ground Water Elev.	Depth To Water	SPH Thickness	SPH Removed	Total SPH Removed	Notes	TPH-Gasoline	Benzene	Toluene	Ethyl-Benzene	Xylene	TPH-Diesel	TDS	MTBE
MW-7															
06/23/92	5.26	0.88	4.38	--	--	--	--	<50	4.7	<0.5	<0.5	<0.5	<50	--	--
08/24/92	5.26	-0.29	5.55	--	--	--	--	--	--	--	--	--	--	--	--
09/21/92	5.26	-0.39	5.65	--	--	--	--	<50	<0.5	<0.5	<0.5	<0.5	<50	--	--
10/26/92	5.26	-0.25	5.51	--	--	--	--	--	--	--	--	--	--	--	--
12/23/92	5.26	1.31	3.95	--	--	--	--	<50	2.9	<0.5	<0.5	<0.5	60	--	--
01/08/93	5.26	--	--	--	--	--	--	--	--	--	--	--	--	--	--
03/25/93	5.26	2.76	2.50	--	--	--	--	<50	<0.5	<0.5	<0.5	<0.5	<10	--	--
06/11/93	5.26	1.80	3.46	--	--	--	--	<50	0.6	<0.5	<0.5	<0.5	--	2200	--
09/29/93	5.26	-0.26	5.52	--	--	--	--	<50	2.0	1.0	1.0	7.0	<10	--	--
12/20/93	5.26	0.85	4.41	--	--	--	--	<50	2.0	<0.5	<0.5	<0.5	<10	--	--
03/07/94	5.26	2.64	2.62	--	--	--	--	<50	<0.5	<0.5	<0.5	<0.5	<10	--	--
06/17/94	5.26	1.99	3.27	--	--	--	--	<50	<0.5	<0.5	<0.5	<0.5	<50	--	--
09/12/94	5.26	1.15	4.11	--	--	--	--	<50	<0.5	<0.5	<0.5	<0.5	<50	--	<5.0
11/30/94	5.26	2.50	2.76	--	--	--	--	<50	<0.5	<0.5	<0.5	<0.5	92*	--	--
03/24/95	5.26	3.06	2.20	--	--	--	--	<50	<0.5	<0.5	<0.5	<0.5	<50	--	--
06/27/95	5.26	1.36	3.90	--	--	--	--	<50	<0.5	<0.5	<0.5	<0.5	69**	--	--
09/28/95	5.26	0.41	4.85	--	--	--	--	<50	<0.5	<0.5	<0.5	<0.5	84**	--	--
12/19/95	5.26	2.24	3.02	--	--	--	--	<50	<0.5	<0.5	<0.5	<0.5	84**	--	<2.5
02/28/96	5.26	3.83	1.43	--	--	--	--	<50	<0.5	<0.5	<0.5	<0.5	99**	--	<2.5
06/25/96	5.26	0.97	4.29	--	--	--	--	<50	<0.5	<0.5	<0.5	<0.5	110**	--	<2.5
12/17/96	5.26	3.08	2.18	--	--	--	--	<50	<0.5	<0.5	<0.5	<0.5	54**	--	<2.5
03/31/97	5.26	2.32	2.94	--	--	--	--	<50	<0.5	<0.5	<0.5	<0.5	100**	--	<2.5
08/30/97	5.26	1.68	3.58	--	--	--	Sampled annually	--	--	--	--	--	--	--	--
09/12/97	5.26	1.85	3.41	--	--	--	--	--	--	--	--	--	--	--	--
12/05/97	5.26	3.37	1.89	--	--	--	--	--	--	--	--	--	--	--	--
02/16/98	5.26	3.43	1.83	--	--	--	--	<50	<0.5	<0.5	<0.5	<0.5	77**	--	<2.5

* Chromatogram pattern indicates a non-diesel mix.
 ** Chromatogram pattern indicates an unidentified hydrocarbon.

Cumulative Table of Well Data and Analytical Results

Vertical Measurements are in feet.

Volumetric Measurements are in gallons.

Analytical results are in parts per billion (ppb)

DATE	Well Head Elev.	Ground Water Elev.	Depth To Water	SPH Thickness	SPH Removed	Total SPH Removed	Notes	TPH-Gasoline	Benzene	Toluene	Ethyl-Benzene	Xylene	TPH-Diesel	TDS	MTBE
MW-8															
06/23/92	8.94	-15.20	24.14	--	--	--	--	<50	<0.5	<0.5	<0.5	<0.5	<50	--	--
08/24/92	8.94	0.34	8.60	--	--	--	--	--	--	--	--	--	--	--	--
09/21/92	8.94	0.55	8.39	--	--	--	--	94	<0.5	<0.5	<0.5	<0.5	<50	--	--
10/26/92	8.94	-0.18	9.12	--	--	--	--	--	--	--	--	--	--	--	--
12/23/92	8.94	0.83	8.11	--	--	--	--	<50	0.7	5.0	0.7	2.9	79	--	--
01/08/93	8.94	--	--	--	--	--	--	--	--	--	--	--	--	--	--
03/25/93	8.94	--	--	--	--	--	--	--	--	--	--	--	--	--	--
06/11/93	8.94	0.55	8.39	--	--	--	--	<50	<0.5	<0.5	<0.5	<0.5	--	3500	--
09/29/93	8.94	0.69	8.25	--	--	--	--	<50	<0.5	<0.5	<0.5	<0.5	<10	--	--
12/20/93	8.94	0.48	8.46	--	--	--	--	<50	<0.5	0.6	<0.5	1.0	<10	--	--
03/07/94	8.94	0.28	8.66	--	--	--	--	<50	<0.5	<0.5	<0.5	<0.5	<10	--	--
06/17/94	8.94	0.12	8.82	--	--	--	--	<50	<0.5	<0.5	<0.5	<0.5	<50	--	--
09/12/94	8.94	0.11	8.83	--	--	--	--	<50	<0.5	<0.5	<0.5	0.8	<50	--	<5.0
11/30/94	8.94	0.31	8.63	--	--	--	--	<50	<0.5	<0.5	<0.5	<0.5	120*	--	--
03/24/95	8.94	0.43	8.51	--	--	--	--	<50	<0.5	<0.5	<0.5	<0.5	110**	--	--
06/27/95	8.94	-0.03	8.97	--	--	--	--	<50	<0.5	<0.5	<0.5	<0.5	67**	--	--
09/28/95	8.94	0.04	8.90	--	--	--	--	<50	<0.5	<0.5	<0.5	<0.5	91**	--	--
12/19/95	8.94	0.54	8.40	--	--	--	--	<50	<0.5	<0.5	<0.5	<0.5	76**	--	<2.5
02/28/96	8.94	0.50	8.44	--	--	--	--	<50	<0.5	<0.5	<0.5	<0.5	<50	--	<2.5
06/25/96	8.94	0.05	8.89	--	--	--	--	<50	<0.5	<0.5	<0.5	<0.5	80**	--	<2.5
12/17/96	8.94	0.49	8.45	--	--	--	--	<50	<0.5	<0.5	<0.5	<0.5	79**	--	<2.5
03/31/97	8.94	0.18	8.76	--	--	--	--	<50	<0.5	<0.5	<0.5	<0.5	72**	--	3.6
06/30/97	8.94	-0.18	9.12	--	--	--	Sampled annually	--	--	--	--	--	--	--	--
09/12/97	8.94	0.13	8.81	--	--	--	--	--	--	--	--	--	--	--	--
12/05/97	8.94	0.59	8.35	--	--	--	--	--	--	--	--	--	--	--	--
02/16/98	8.94	1.00	7.94	--	--	--	--	<50	<0.5	<0.5	<0.5	<0.5	68**	--	4.3

* Chromatogram pattern indicates a non-diesel mix.

** Chromatogram pattern indicates an unidentified hydrocarbon.

Cumulative Table of Well Data and Analytical Results

Vertical Measurements are in feet.

Volumetric Measurements are in gallons.

Analytical results are in parts per billion (ppb)

DATE	Well Head Elev.	Ground Water Elev.	Depth To Water	SPH Thickness	SPH Removed	Total SPH Removed	Notes	TPH-Gasoline	Benzene	Toluene	Ethyl-Benzene	Xylene	TPH-Diesel	TDS	MTBE
TRIP BLANK															
08/24/92	--	--	--	--	--	--	--	--	--	--	--	--	--	--	--
09/21/92	--	--	--	--	--	--	--	<50	<0.5	<0.5	<0.5	<0.5	--	--	--
10/26/92	--	--	--	--	--	--	--	--	--	--	--	--	--	--	--
12/23/92	--	--	--	--	--	--	--	<50	<0.5	<0.5	<0.5	<0.5	--	--	--
01/08/93	--	--	--	--	--	--	--	--	--	--	--	--	--	--	--
03/25/93	--	--	--	--	--	--	--	<50	<0.5	<0.5	<0.5	<0.5	--	--	--
06/11/93	--	--	--	--	--	--	--	<50	<0.5	<0.5	<0.5	<0.5	--	--	--
09/29/93	--	--	--	--	--	--	--	<50	<0.5	<0.5	<0.5	<0.5	--	--	--
12/20/93	--	--	--	--	--	--	--	<50	<0.5	<0.5	<0.5	<0.5	--	--	--
03/07/94	--	--	--	--	--	--	--	<50	<0.5	<0.5	<0.5	<0.5	--	--	--
06/17/94	--	--	--	--	--	--	--	<50	<0.5	<0.5	<0.5	<0.5	--	--	--
09/12/94	--	--	--	--	--	--	--	<50	<0.5	<0.5	<0.5	<0.5	1.0	--	--
11/30/94	--	--	--	--	--	--	--	<50	<0.5	<0.5	<0.5	<0.5	--	--	--
03/24/95	--	--	--	--	--	--	--	<50	<0.5	<0.5	<0.5	<0.5	--	--	--
06/27/95	--	--	--	--	--	--	--	<50	<0.5	<0.5	<0.5	<0.5	--	--	--
09/28/95	--	--	--	--	--	--	--	<50	<0.5	<0.5	<0.5	<0.5	--	--	--
12/19/95	--	--	--	--	--	--	--	<50	<0.5	<0.5	<0.5	<0.5	--	--	--
02/28/96	--	--	--	--	--	--	--	<50	<0.5	<0.5	<0.5	<0.5	--	--	--
06/25/96	--	--	--	--	--	--	--	<50	<0.5	<0.5	<0.5	<0.5	--	--	--
12/17/96	--	--	--	--	--	--	--	<50	<0.5	<0.5	<0.5	<0.5	--	--	<2.5
03/31/97	--	--	--	--	--	--	--	<50	<0.5	<0.5	<0.5	<0.5	--	--	<2.5
06/30/97	--	--	--	--	--	--	--	<50	<0.5	<0.5	<0.5	<0.5	--	--	<2.5
09/12/97	--	--	--	--	--	--	--	<50	<0.5	<0.5	<0.5	<0.5	--	--	<2.5
12/05/97	--	--	--	--	--	--	--	<50	<0.5	<0.5	<0.5	<0.5	--	--	<2.5
02/16/98	--	--	--	--	--	--	--	<50	<0.5	<0.5	<0.5	<0.5	--	--	<2.5

Note: Blaine Tech Services, Inc. began routine monitoring of the groundwater wells at this site on November 1, 1994. Earlier field data and analytical results are drawn from the September 27, 1994 Groundwater Technology, Inc. report.

ABBREVIATIONS:

TPH = Total Petroleum Hydrocarbons
 TDS = Total Dissolved Solids
 MTBE = Methyl-tert-butyl Ether

Analytical Appendix



Blaine Tech Services 1680 Rogers Avenue San Jose, CA 95112	Client Proj. ID: Chevron 9-0121/980216-H2 Sample Descript: MW-1 Matrix: LIQUID Analysis Method: EPA 8015 Mod Lab Number: 9802B38-01	Sampled: 02/16/98 Received: 02/17/98 Extracted: 02/20/98 Analyzed: 02/24/98 Reported: 03/02/98
Attention: Fran Thie		

QC Batch Number: GC0220980HBPEXA
Instrument ID: GCHP4A

Total Extractable Petroleum Hydrocarbons (TEPH)

Analyte	Detection Limit ug/L	Sample Results ug/L
TEPH as Diesel Chromatogram Pattern:	50 C9-C24	1600 Unidentified HC
Surrogates	Control Limits %	% Recovery
n-Pentacosane (C25)	50 150	113

Results quantitated against a diesel standard.
Analytes reported as N.D. were not present above the stated limit of detection.

SEQUOIA ANALYTICAL - ELAP #1210


Peggy Penner
Project Manager





Blaine Tech Services
1680 Rogers Avenue
San Jose, CA 95112

Client Proj. ID: Chevron 9-0121/980216-H2
Sample Descript: MW-1
Matrix: LIQUID
Analysis Method: 8015Mod/8020
Lab Number: 9802B38-01

Sampled: 02/16/98
Received: 02/17/98
Analyzed: 02/24/98
Reported: 03/02/98

Attention: Fran Thie

QC Batch Number: GC022498BTEX17A
Instrument ID: GCHP17

Total Purgeable Petroleum Hydrocarbons (TPPH) with BTEX and MTBE

Analyte	Detection Limit ug/L	Sample Results ug/L
TPPH as Gas	250	4400
Methyl t-Butyl Ether	12	270
Benzene	2.5	120
Toluene	2.5	12
Ethyl Benzene	2.5	11
Xylenes (Total)	2.5	7.7
Chromatogram Pattern:		Gas
Surrogates	Control Limits %	% Recovery
Trifluorotoluene	70 130	311 Q

Analytes reported as N.D. were not present above the stated limit of detection.

SEQUOIA ANALYTICAL - ELAP #1210


Peggy Penner
Project Manager





Blaine Tech Services
1680 Rogers Avenue
San Jose, CA 95112

Client Proj. ID: Chevron 9-0121/980216-H2
Sample Descript: MW-3
Matrix: LIQUID
Analysis Method: EPA 8015 Mod
Lab Number: 9802B38-02

Sampled: 02/16/98
Received: 02/17/98
Extracted: 02/20/98
Analyzed: 02/24/98
Reported: 03/02/98

QC Batch Number: GC0220980HBPEXA
Instrument ID: GCHP4A

Total Extractable Petroleum Hydrocarbons (TEPH)

Analyte	Detection Limit ug/L	Sample Results ug/L
TEPH as Diesel Chromatogram Pattern:	50 C9-C24	1000 Unidentified HC
Surrogates	Control Limits %	% Recovery
n-Pentacosane (C25)	50 150	97

Results quantitated against a diesel standard.
Analytes reported as N.D. were not present above the stated limit of detection.

SEQUOIA ANALYTICAL - ELAP #1210

Peggy Penner
Project Manager





Blaine Tech Services 1680 Rogers Avenue San Jose, CA 95112	Client Proj. ID: Chevron 9-0121/980216-H2 Sample Descript: MW-3 Matrix: LIQUID Analysis Method: 8015Mod/8020 Lab Number: 9802B38-02	Sampled: 02/16/98 Received: 02/17/98 Analyzed: 02/25/98 Reported: 03/02/98
Attention: Fran Thie		

QC Batch Number: GC022598BTEX02A
Instrument ID: GCHP2

Total Purgeable Petroleum Hydrocarbons (TPPH) with BTEX and MTBE

Analyte	Detection Limit ug/L	Sample Results ug/L
TPPH as Gas	1000	6200
Methyl t-Butyl Ether	50	N.D.
Benzene	10	1100
Toluene	10	20
Ethyl Benzene	10	34
Xylenes (Total)	10	12
Chromatogram Pattern:		Gas
Surrogates	Control Limits %	% Recovery
Trifluorotoluene	70 130	103

Analytes reported as N.D. were not present above the stated limit of detection.

SEQUOIA ANALYTICAL - ELAP #1210


Peggy Penner
Project Manager





Blaine Tech Services 1680 Rogers Avenue San Jose, CA 95112	Client Proj. ID: Chevron 9-0121/980216-H2 Sample Descript: MW-4 Matrix: LIQUID Analysis Method: EPA 8015 Mod Lab Number: 9802B38-03	Sampled: 02/16/98 Received: 02/17/98 Extracted: 02/23/98 Analyzed: 02/24/98 Reported: 03/02/98
Attention: Fran Thie		

QC Batch Number: GC0223980HBPEXC
Instrument ID: GCHP19B

Total Extractable Petroleum Hydrocarbons (TEPH)

Analyte	Detection Limit ug/L	Sample Results ug/L
TEPH as Diesel Chromatogram Pattern:	50 C9-C24	1300 Unidentified HC
Surrogates n-Pentacosane (C25)	Control Limits % 50 150	% Recovery 108

Results quantitated against a diesel standard.
Analytes reported as N.D. were not present above the stated limit of detection.

SEQUOIA ANALYTICAL - ELAP #1210

Peggy Penner
Project Manager





Blaine Tech Services
1680 Rogers Avenue
San Jose, CA 95112

Client Proj. ID: Chevron 9-0121/980216-H2
Sample Descript: MW-4
Matrix: LIQUID
Analysis Method: 8015Mod/8020
Lab Number: 9802B38-03

Sampled: 02/16/98
Received: 02/17/98
Analyzed: 02/26/98
Reported: 03/02/98

Attention: Fran Thie

QC Batch Number: GC022698BTEX03A
Instrument ID: GCHP3

Total Purgeable Petroleum Hydrocarbons (TPPH) with BTEX and MTBE

Analyte	Detection Limit ug/L	Sample Results ug/L
TPPH as Gas	250	1200
Methyl t-Butyl Ether	125	12000
Benzene	2.5	57
Toluene	2.5	4.5
Ethyl Benzene	2.5	N.D.
Xylenes (Total)	2.5	7.0
Chromatogram Pattern:		Gas
Surrogates	Control Limits %	% Recovery
Trifluorotoluene	70 130	124

Analytes reported as N.D. were not present above the stated limit of detection.

SEQUOIA ANALYTICAL - ELAP #1210


Peggy Penner
Project Manager





Blaine Tech Services 1680 Rogers Avenue San Jose, CA 95112	Client Proj. ID: Chevron 9-0121/980216-H2 Sample Descript: MW-5 Matrix: LIQUID Analysis Method: EPA 8015 Mod Lab Number: 9802B38-04	Sampled: 02/16/98 Received: 02/17/98 Extracted: 02/23/98 Analyzed: 02/24/98 Reported: 03/02/98
--	---	--

QC Batch Number: GC0223980HBPEXC
Instrument ID: GCHP19B

Total Extractable Petroleum Hydrocarbons (TEPH)

Analyte	Detection Limit ug/L	Sample Results ug/L
TEPH as Diesel Chromatogram Pattern:	50 C9-C24	62 Unidentified HC
Surrogates n-Pentacosane (C25)	Control Limits % 50 150	% Recovery 96

Results quantitated against a diesel standard.
Analytes reported as N.D. were not present above the stated limit of detection.

SEQUOIA ANALYTICAL - ELAP #1210

Peggy Penner
Project Manager





Blaine Tech Services 1680 Rogers Avenue San Jose, CA 95112	Client Proj. ID: Chevron 9-0121/980216-H2 Sample Descript: MW-5 Matrix: LIQUID Analysis Method: 8015Mod/8020 Lab Number: 9802B38-04	Sampled: 02/16/98 Received: 02/17/98 Analyzed: 02/25/98 Reported: 03/02/98
Attention: Fran Thie		

QC Batch Number: GC022598BTEX02A
Instrument ID: GCHP2

Total Purgeable Petroleum Hydrocarbons (TPPH) with BTEX and MTBE

Analyte	Detection Limit ug/L	Sample Results ug/L
TPPH as Gas	50	N.D.
Methyl t-Butyl Ether	2.5	N.D.
Benzene	0.50	N.D.
Toluene	0.50	N.D.
Ethyl Benzene	0.50	N.D.
Xylenes (Total)	0.50	N.D.
Chromatogram Pattern:		
Surrogates	Control Limits %	% Recovery
Trifluorotoluene	70 130	80

Analytes reported as N.D. were not present above the stated limit of detection.

SEQUOIA ANALYTICAL - ELAP #1210


Peggy Pennar
Project Manager





Blaine Tech Services 1680 Rogers Avenue San Jose, CA 95112	Client Proj. ID: Chevron 9-0121/980216-H2 Sample Descript: MW-6 Matrix: LIQUID Analysis Method: EPA 8015 Mod Lab Number: 9802B38-05	Sampled: 02/16/98 Received: 02/17/98 Extracted: 02/23/98 Analyzed: 02/24/98 Reported: 03/02/98
Attention: Fran Thie		

QC Batch Number: GC0223980HBPEXC
Instrument ID: GCHP19B

Total Extractable Petroleum Hydrocarbons (TEPH)

Analyte	Detection Limit ug/L	Sample Results ug/L
TEPH as Diesel Chromatogram Pattern:	50 C9-C24	330 Unidentified HC
Surrogates n-Pentacosane (C25)	Control Limits % 50 150	% Recovery 97

Results quantitated against a diesel standard.
Analytes reported as N.D. were not present above the stated limit of detection.

SEQUOIA ANALYTICAL - ELAP #1210


Peggy Penner
Project Manager





Blaine Tech Services 1680 Rogers Avenue San Jose, CA 95112	Client Proj. ID: Chevron 9-0121/980216-H2 Sample Descript: MW-6 Matrix: LIQUID Analysis Method: 8015Mod/8020 Lab Number: 9802B38-05	Sampled: 02/16/98 Received: 02/17/98 Analyzed: 02/26/98 Reported: 03/02/98
Attention: Fran Thie		

QC Batch Number: GC022698BTEX17A
Instrument ID: GCHP17

Total Purgeable Petroleum Hydrocarbons (TPPH) with BTEX and MTBE

Analyte	Detection Limit ug/L	Sample Results ug/L
TPPH as Gas	50	140
Methyl t-Butyl Ether	2.5	N.D.
Benzene	0.50	N.D.
Toluene	0.50	N.D.
Ethyl Benzene	0.50	N.D.
Xylenes (Total)	0.50	N.D.
Chromatogram Pattern: Unidentified HC		C6-C12
Surrogates	Control Limits %	% Recovery
Trifluorotoluene	70 130	97

Analytes reported as N.D. were not present above the stated limit of detection.

SEQUOIA ANALYTICAL - ELAP #1210

Peggy Penner
Project Manager





Blaine Tech Services 1680 Rogers Avenue San Jose, CA 95112	Client Proj. ID: Chevron 9-0121/980216-H2 Sample Descript: MW-7 Matrix: LIQUID Analysis Method: EPA 8015 Mod Lab Number: 9802B38-06	Sampled: 02/16/98 Received: 02/17/98 Extracted: 02/23/98 Analyzed: 02/24/98 Reported: 03/02/98
Attention: Fran Thie		

QC Batch Number: GC0223980HBPEXC
Instrument ID: GCHP19B

Total Extractable Petroleum Hydrocarbons (TEPH)

Analyte	Detection Limit ug/L	Sample Results ug/L
TEPH as Diesel Chromatogram Pattern:	50 C9-C24	77 Unidentified HC
Surrogates n-Pentacosane (C25)	Control Limits % 50 150	% Recovery 99

Results quantitated against a Diesel standard.
Analytes reported as N.D. were not present above the stated limit of detection.

SEQUOIA ANALYTICAL - ELAP #1210

Peggy Penner
Project Manager





Blaine Tech Services 1680 Rogers Avenue San Jose, CA 95112	Client Proj. ID: Chevron 9-0121/980216-H2 Sample Descript: MW-7 Matrix: LIQUID Analysis Method: 8015Mod/8020 Lab Number: 9802B38-06	Sampled: 02/16/98 Received: 02/17/98 Analyzed: 02/25/98 Reported: 03/02/98
Attention: Fran Thie		

QC Batch Number: GC022598BTEX17A
Instrument ID: GCHP17

Total Purgeable Petroleum Hydrocarbons (TPPH) with BTEX and MTBE

Analyte	Detection Limit ug/L	Sample Results ug/L
TPPH as Gas	50	N.D.
Methyl t-Butyl Ether	2.5	N.D.
Benzene	0.50	N.D.
Toluene	0.50	N.D.
Ethyl Benzene	0.50	N.D.
Xylenes (Total)	0.50	N.D.
Chromatogram Pattern:		
Surrogates	Control Limits %	% Recovery
Trifluorotoluene	70 130	113

Analytes reported as N.D. were not present above the stated limit of detection.

SEQUOIA ANALYTICAL - ELAP #1210

Peggy Penner
Project Manager





Blaine Tech Services 1680 Rogers Avenue San Jose, CA 95112	Client Proj. ID: Chevron 9-0121/980216-H2 Sample Descript: MW-8 Matrix: LIQUID Analysis Method: EPA 8015 Mod Lab Number: 9802B38-07	Sampled: 02/16/98 Received: 02/17/98 Extracted: 02/23/98 Analyzed: 02/24/98 Reported: 03/02/98
Attention: Fran Thie		

QC Batch Number: GC0223980HBPEXC
Instrument ID: GCHP19B

Total Extractable Petroleum Hydrocarbons (TEPH)

Analyte	Detection Limit ug/L	Sample Results ug/L
TEPH as Diesel Chromatogram Pattern:	50 C9-C24	68 Unidentified HC
Surrogates n-Pentacosane (C25)	Control Limits % 50 150	% Recovery 89

Results quantitated against a diesel standard.
Analytes reported as N.D. were not present above the stated limit of detection.

SEQUOIA ANALYTICAL - ELAP #1210

Peggy Penner
Project Manager





Blaine Tech Services 1680 Rogers Avenue San Jose, CA 95112	Client Proj. ID: Chevron 9-0121/980216-H2 Sample Descript: MW-8 Matrix: LIQUID Analysis Method: 8015Mod/8020 Lab Number: 9802B38-07	Sampled: 02/16/98 Received: 02/17/98 Analyzed: 02/25/98 Reported: 03/02/98
Attention: Fran Thie		

QC Batch Number: GC022598BTEX17A
Instrument ID: GCHP17

Total Purgeable Petroleum Hydrocarbons (TPPH) with BTEX and MTBE

Analyte	Detection Limit ug/L	Sample Results ug/L
TPPH as Gas	50	N.D.
Methyl t-Butyl Ether	2.5	4.3
Benzene	0.50	N.D.
Toluene	0.50	N.D.
Ethyl Benzene	0.50	N.D.
Xylenes (Total)	0.50	N.D.
Chromatogram Pattern:		
Surrogates	Control Limits %	% Recovery
Trifluorotoluene	70 130	93

Analytes reported as N.D. were not present above the stated limit of detection.

SEQUOIA ANALYTICAL - ELAP #1210

Peggy Penner
Project Manager





Blaine Tech Services 1680 Rogers Avenue San Jose, CA 95112	Client Proj. ID: Chevron 9-0121/980216-H2 Sample Descript: TB Matrix: LIQUID Analysis Method: 8015Mod/8020 Lab Number: 9802B38-08	Sampled: 02/16/98 Received: 02/17/98 Analyzed: 02/25/98 Reported: 03/02/98
Attention: Fran Thie		

QC Batch Number: GC022598BTEX17A
Instrument ID: GCHP17

Total Purgeable Petroleum Hydrocarbons (TPPH) with BTEX and MTBE

Analyte	Detection Limit ug/L	Sample Results ug/L
TPPH as Gas	50	N.D.
Methyl t-Butyl Ether	2.5	N.D.
Benzene	0.50	N.D.
Toluene	0.50	N.D.
Ethyl Benzene	0.50	N.D.
Xylenes (Total)	0.50	N.D.
Chromatogram Pattern:		
Surrogates	Control Limits %	% Recovery
Trifluorotoluene	70 130	96

Analytes reported as N.D. were not present above the stated limit of detection.

SEQUOIA ANALYTICAL - ELAP #1210

Peggy Penner
Project Manager





Blaine Tech Services, Inc.
1680 Rogers Ave.
San Jose, CA 95112
Attention: Fran Thie

Client Project ID: Chevron 9-0121 / 980216-H2
Matrix: Liquid

Work Order #: 9802B38 -01

Reported: Mar 10, 1998

QUALITY CONTROL DATA REPORT

Analyte:	Benzene	Toluene	Ethyl Benzene	Xylenes	Gas
QC Batch#:	GC022498BTEX17A	GC022498BTEX17A	GC022498BTEX17A	GC022498BTEX17A	GC022498BTEX17A
Analy. Method:	EPA 8020	EPA 8020	EPA 8020	EPA 8020	EPA 8015M
Prep. Method:	EPA 5030	EPA 5030	EPA 5030	EPA 5030	EPA 5030

Analyst:	C. Demartini	C. Demartini	C. Demartini	C. Demartini	C. Demartini
MS/MSD #:	9802A5304	9802A5304	9802A5304	9802A5304	9802A5304
Sample Conc.:	N.D.	N.D.	N.D.	N.D.	N.D.
Prepared Date:	2/24/98	2/24/98	2/24/98	2/24/98	2/24/98
Analyzed Date:	2/24/98	2/24/98	2/24/98	2/24/98	2/24/98
Instrument I.D.#:	GCHP17	GCHP17	GCHP17	GCHP17	GCHP17
Conc. Spiked:	10 µg/L	10 µg/L	10 µg/L	30 µg/L	60 µg/L
Result:	10	9.7	9.6	30	58
MS % Recovery:	100	97	96	100	97
Dup. Result:	9.4	8.7	8.1	27	51
MSD % Recov.:	94	87	81	90	85
RPD:	6.2	11	17	11	13
RPD Limit:	0-25	0-25	0-25	0-25	0-25

LCS #:	BLK022498	BLK022498	BLK022498	BLK022498	BLK022498
Prepared Date:	2/24/98	2/24/98	2/24/98	2/24/98	2/24/98
Analyzed Date:	2/24/98	2/24/98	2/24/98	2/24/98	2/24/98
Instrument I.D.#:	GCHP17	GCHP17	GCHP17	GCHP17	GCHP17
Conc. Spiked:	10 µg/L	10 µg/L	10 µg/L	30 µg/L	60 µg/L
LCS Result:	10	9.6	9.3	29	57
LCS % Recov.:	100	96	93	97	95

MS/MSD	60-140	60-140	60-140	60-140	60-140
LCS	70-130	70-130	70-130	70-130	70-130
Control Limits					

SEQUOIA ANALYTICAL

Peggy Penner
Project Manager

Please Note:

The LCS is a control sample of known, interferent-free matrix that is analyzed using the same reagents, preparation, and analytical methods employed for the samples. The matrix spike is an aliquot of sample fortified with known quantities of specific compounds and subjected to the entire analytical procedure. If the recovery of analytes from the matrix spike does not fall within specified control limits due to matrix interference, the LCS recovery is to be used to validate the batch.

** MS=Matrix Spike, MSD=MS Duplicate, RPD=Relative % Difference

9802B38.BLA <1>





Sequoia Analytical

680 Chesapeake Drive
404 N. Wiget Lane
819 Striker Avenue, Suite 8

Redwood City, CA 94063
Walnut Creek, CA 94598
Sacramento, CA 95834

(650) 364-9600
(510) 988-9600
(916) 921-9600

FAX (650) 364-9233
FAX (510) 988-9673
FAX (916) 921-0100

Blaine Tech Services, Inc.
1680 Rogers Ave.
San Jose, CA 95112
Attention: Fran Thie

Client Project ID: Chevron 9-0121 / 980216-H2
Matrix: Liquid

Work Order #: 9802B38-02, 04

Reported: Mar 10, 1998

QUALITY CONTROL DATA REPORT

Analyte:	Benzene	Toluene	Ethyl Benzene	Xylenes	Gas
QC Batch#:	GC022598BTEX02A	GC022598BTEX02A	GC022598BTEX02A	GC022598BTEX02A	GC022598BTEX02A
Analy. Method:	EPA 8020	EPA 8020	EPA 8020	EPA 8020	EPA 8015M
Prep. Method:	EPA 5030	EPA 5030	EPA 5030	EPA 5030	EPA 5030

Analyst:	C. Demartini	C. Demartini	C. Demartini	C. Demartini	C. Demartini
MS/MSD #:	9802C1904	9802C1904	9802C1904	9802C1904	9802C1904
Sample Conc.:	N.D.	N.D.	N.D.	N.D.	N.D.
Prepared Date:	2/25/98	2/25/98	2/25/98	2/25/98	2/25/98
Analyzed Date:	2/25/98	2/25/98	2/25/98	2/25/98	2/25/98
Instrument I.D.#:	GCHP2	GCHP2	GCHP2	GCHP2	GCHP2
Conc. Spiked:	10 µg/L	10 µg/L	10 µg/L	30 µg/L	60 µg/L
Result:	9.6	9.2	9.3	28	66
MS % Recovery:	96	92	93	93	110
Dup. Result:	9.7	9.3	9.4	28	66
MSD % Recov.:	97	93	94	93	110
RPD:	1.0	1.1	1.1	0.0	0.0
RPD Limit:	0-25	0-25	0-25	0-25	0-25

LCS #:	BLK022598	BLK022598	BLK022598	BLK022598	BLK022598
Prepared Date:	2/25/98	2/25/98	2/25/98	2/25/98	2/25/98
Analyzed Date:	2/25/98	2/25/98	2/25/98	2/25/98	2/25/98
Instrument I.D.#:	GCHP2	GCHP2	GCHP2	GCHP2	GCHP2
Conc. Spiked:	10 µg/L	10 µg/L	10 µg/L	30 µg/L	60 µg/L
LCS Result:	9.9	9.3	9.5	28	69
LCS % Recov.:	99	93	95	93	115

MS/MSD	60-140	60-140	60-140	60-140	60-140
LCS	70-130	70-130	70-130	70-130	70-130
Control Limits					

SEQUOIA ANALYTICAL

Peggy Penner
Project Manager

Please Note:

The LCS is a control sample of known, interferent-free matrix that is analyzed using the same reagents, preparation, and analytical methods employed for the samples. The matrix spike is an aliquot of sample fortified with known quantities of specific compounds and subjected to the entire analytical procedure. If the recovery of analytes from the matrix spike does not fall within specified control limits due to matrix interference, the LCS recovery is to be used to validate the batch.

** MS = Matrix Spike, MSD = MS Duplicate, RPD = Relative % Difference

9802B38.BLA <2>





Sequoia Analytical

680 Chesapeake Drive
404 N. Wiget Lane
819 Striker Avenue, Suite 8

Redwood City, CA 94063
Walnut Creek, CA 94598
Sacramento, CA 95834

(650) 364-9600
(510) 988-9600
(916) 921-9600

FAX (650) 364-9233
FAX (510) 988-9673
FAX (916) 921-0100

Blaine Tech Services, Inc.
1680 Rogers Ave.
San Jose, CA 95112
Attention: Fran Thie

Client Project ID: Chevron 9-0121 / 980216-H2
Matrix: Liquid

Work Order #: 9802B38-03

Reported: Mar 10, 1998

QUALITY CONTROL DATA REPORT

Analyte:	Benzene	Toluene	Ethyl Benzene	Xylenes	Gas
QC Batch#:	GC022698BTEX03A	GC022698BTEX03A	GC022698BTEX03A	GC022698BTEX03A	GC022698BTEX03A
Analy. Method:	EPA 8020	EPA 8020	EPA 8020	EPA 8020	EPA 8015M
Prep. Method:	EPA 5030	EPA 5030	EPA 5030	EPA 5030	EPA 5030

Analyst:	C. Demartini	C. Demartini	C. Demartini	C. Demartini	C. Demartini
MS/MSD #:	9802C3803	9802C3803	9802C3803	9802C3803	9802C3803
Sample Conc.:	N.D.	N.D.	N.D.	N.D.	N.D.
Prepared Date:	2/26/98	2/26/98	2/26/98	2/26/98	2/26/98
Analyzed Date:	2/26/98	2/26/98	2/26/98	2/26/98	2/26/98
Instrument I.D.#:	GCHP3	GCHP3	GCHP3	GCHP3	GCHP3
Conc. Spiked:	10 µg/L	10 µg/L	10 µg/L	30 µg/L	60 µg/L
Result:	9.9	9.7	10	30	65
MS % Recovery:	99	97	100	100	108
Dup. Result:	9.9	9.8	10	30	65
MSD % Recov.:	99	98	100	100	108
RPD:	0.0	1.0	0.0	0.0	0.0
RPD Limit:	0-25	0-25	0-25	0-25	0-25

LCS #:	BLK022698	BLK022698	BLK022698	BLK022698	BLK022698
Prepared Date:	2/26/98	2/26/98	2/26/98	2/26/98	2/26/98
Analyzed Date:	2/26/98	2/26/98	2/26/98	2/26/98	2/26/98
Instrument I.D.#:	GCHP3	GCHP3	GCHP3	GCHP3	GCHP3
Conc. Spiked:	10 µg/L	10 µg/L	10 µg/L	30 µg/L	60 µg/L
LCS Result:	10	10	10	31	67
LCS % Recov.:	100	100	100	103	112

MS/MSD	60-140	60-140	60-140	60-140	60-140
LCS	70-130	70-130	70-130	70-130	70-130
Control Limits					

SEQUOIA ANALYTICAL

Peggy Penner
Project Manager

Please Note:

The LCS is a control sample of known, interferent-free matrix that is analyzed using the same reagents, preparation, and analytical methods employed for the samples. The matrix spike is an aliquot of sample fortified with known quantities of specific compounds and subjected to the entire analytical procedure. If the recovery of analytes from the matrix spike does not fall within specified control limits due to matrix interference, the LCS recovery is to be used to validate the batch.

** MS = Matrix Spike, MSD = MS Duplicate, RPD = Relative % Difference

9802B38.BLA <3>





Blaine Tech Services, Inc.
1680 Rogers Ave.
San Jose, CA 95112
Attention: Fran Thie

Client Project ID: Chevron 9-0121 / 980216-H2
Matrix: Liquid

Work Order #: 9802B38-05

Reported: Mar 10, 1998

QUALITY CONTROL DATA REPORT

Analyte:	Benzene	Toluene	Ethyl Benzene	Xylenes	Gas
QC Batch#:	GC022698BTEX17A	GC022698BTEX17A	GC022698BTEX17A	GC022698BTEX17A	GC022698BTEX17A
Analy. Method:	EPA 8020	EPA 8020	EPA 8020	EPA 8020	EPA 8015M
Prep. Method:	EPA 5030	EPA 5030	EPA 5030	EPA 5030	EPA 5030

Analyst:	C. Demartini	C. Demartini	C. Demartini	C. Demartini	C. Demartini
MS/MSD #:	9802C3804	9802C3804	9802C3804	9802C3804	9802C3804
Sample Conc.:	N.D.	N.D.	N.D.	N.D.	N.D.
Prepared Date:	2/26/98	2/26/98	2/26/98	2/26/98	2/26/98
Analyzed Date:	2/26/98	2/26/98	2/26/98	2/26/98	2/26/98
Instrument I.D.#:	GCHP17	GCHP17	GCHP17	GCHP17	GCHP17
Conc. Spiked:	10 µg/L	10 µg/L	10 µg/L	30 µg/L	60 µg/L
Result:	10	9.8	10	30	58
MS % Recovery:	100	98	100	100	97
Dup. Result:	10	9.3	8.8	28	65
MSD % Recov.:	100	93	88	93	108
RPD:	0.0	5.2	13	6.9	11
RPD Limit:	0-25	0-25	0-25	0-25	0-25

LCS #:	BLK022698	BLK022698	BLK022698	BLK022698	BLK022698
Prepared Date:	2/26/98	2/26/98	2/26/98	2/26/98	2/26/98
Analyzed Date:	2/26/98	2/26/98	2/26/98	2/26/98	2/26/98
Instrument I.D.#:	GCHP17	GCHP17	GCHP17	GCHP17	GCHP17
Conc. Spiked:	10 µg/L	10 µg/L	10 µg/L	30 µg/L	60 µg/L
LCS Result:	9.8	9.3	8.6	28	54
LCS % Recov.:	98	93	86	93	90

MS/MSD	60-140	60-140	60-140	60-140	60-140
LCS	70-130	70-130	70-130	70-130	70-130
Control Limits					

SEQUOIA ANALYTICAL

Peggy Penner
Project Manager

Please Note:

The LCS is a control sample of known, interferent-free matrix that is analyzed using the same reagents, preparation, and analytical methods employed for the samples. The matrix spike is an aliquot of sample fortified with known quantities of specific compounds and subjected to the entire analytical procedure. If the recovery of analytes from the matrix spike does not fall within specified control limits due to matrix interference, the LCS recovery is to be used to validate the batch.

** MS = Matrix Spike, MSD = MS Duplicate, RPD = Relative % Difference

9802B38.BLA <4>





Sequoia Analytical

680 Chesapeake Drive
404 N. Wiget Lane
819 Striker Avenue, Suite 8

Redwood City, CA 94063
Walnut Creek, CA 94598
Sacramento, CA 95834

(650) 364-9600
(510) 988-9600
(916) 921-9600

FAX (650) 364-9233
FAX (510) 988-9673
FAX (916) 921-0100

Blaine Tech Services, Inc.
1680 Rogers Ave.
San Jose, CA 95112
Attention: Fran Thie

Client Project ID: Chevron 9-0121 / 980216-H2
Matrix: Liquid

Work Order #: 9802B38-06-08

Reported: Mar 10, 1998

QUALITY CONTROL DATA REPORT

Analyte:	Benzene	Toluene	Ethyl Benzene	Xylenes	Gas
QC Batch#:	GC022598BTEX17A	GC022598BTEX17A	GC022598BTEX17A	GC022598BTEX17A	GC022598BTEX17A
Analy. Method:	EPA 8020	EPA 8020	EPA 8020	EPA 8020	EPA 8015M
Prep. Method:	EPA 5030	EPA 5030	EPA 5030	EPA 5030	EPA 5030
Analyst:	C. Demartini	C. Demartini	C. Demartini	C. Demartini	C. Demartini
MS/MSD #:	9802C1904	9802C1904	9802C1904	9802C1904	9802C1904
Sample Conc.:	N.D.	N.D.	N.D.	N.D.	N.D.
Prepared Date:	2/25/98	2/25/98	2/25/98	2/25/98	2/25/98
Analyzed Date:	2/25/98	2/25/98	2/25/98	2/25/98	2/25/98
Instrument I.D.#:	GCHP17	GCHP17	GCHP17	GCHP17	GCHP17
Conc. Spiked:	10 µg/L	10 µg/L	10 µg/L	30 µg/L	60 µg/L
Result:	11	10	10	31	59
MS % Recovery:	110	100	100	103	98
Dup. Result:	10	9.5	8.7	29	67
MSD % Recov.:	100	95	87	97	112
RPD:	9.5	5.1	14	6.7	13
RPD Limit:	0-25	0-25	0-25	0-25	0-25

LCS #:	BLK022598	BLK022598	BLK022598	BLK022598	BLK022598
Prepared Date:	2/25/98	2/25/98	2/25/98	2/25/98	2/25/98
Analyzed Date:	2/25/98	2/25/98	2/25/98	2/25/98	2/25/98
Instrument I.D.#:	GCHP17	GCHP17	GCHP17	GCHP17	GCHP17
Conc. Spiked:	10 µg/L	10 µg/L	10 µg/L	30 µg/L	60 µg/L
LCS Result:	11	9.5	9.1	29	55
LCS % Recov.:	110	95	91	97	92

MS/MSD	60-140	60-140	60-140	60-140	60-140
LCS	70-130	70-130	70-130	70-130	70-130
Control Limits					

SEQUOIA ANALYTICAL

Peggy Penner
Project Manager

Please Note:

The LCS is a control sample of known, interferent-free matrix that is analyzed using the same reagents, preparation, and analytical methods employed for the samples. The matrix spike is an aliquot of sample fortified with known quantities of specific compounds and subjected to the entire analytical procedure. If the recovery of analytes from the matrix spike does not fall within specified control limits due to matrix interference, the LCS recovery is to be used to validate the batch.

** MS=Matrix Spike, MSD=MS Duplicate, RPD=Relative % Difference

9802B38.BLA <5>





Blaine Tech Services, Inc.
1680 Rogers Ave.
San Jose, CA 95112
Attention: Fran Thie

Client Project ID: Chevron 9-0121 / 980216-H2
Matrix: Liquid

Work Order #: 9802B38-01-02

Reported: Mar 10, 1998

QUALITY CONTROL DATA REPORT

Analyte:	Diesel
QC Batch#:	GC0220980HBEXA
Analy. Method:	EPA 8015M
Prep. Method:	EPA 3510

Analyst: D. Lockhart
MS/MSD #: 9802B3501
Sample Conc.: N.D.
Prepared Date: 2/20/98
Analyzed Date: 2/23/98
Instrument I.D.#: GCHP4
Conc. Spiked: 1000 µg/L

Result: 910
MS % Recovery: 91

Dup. Result: 950
MSD % Recov.: 95

RPD: 4.3
RPD Limit: 0-50

LCS #: BLK022098
Prepared Date: 2/20/98
Analyzed Date: 2/23/98
Instrument I.D.#: GCHP4
Conc. Spiked: 1000 µg/L

LCS Result: 830
LCS % Recov.: 83

MS/MSD	50-150
LCS	60-140
Control Limits	

SEQUOIA ANALYTICAL

Peggy Penner
Project Manager

Please Note:

The LCS is a control sample of known, interferent-free matrix that is analyzed using the same reagents, preparation, and analytical methods employed for the samples. The matrix spike is an aliquot of sample fortified with known quantities of specific compounds and subjected to the entire analytical procedure. If the recovery of analytes from the matrix spike does not fall within specified control limits due to matrix interference, the LCS recovery is to be used to validate the batch.

** MS=Matrix Spike, MSD=MS Duplicate, RPD=Relative % Difference

9802B38.BLA <6>





Blaine Tech Services, Inc.
1680 Rogers Ave.
San Jose, CA 95112
Attention: Fran Thie

Client Project ID: Chevron 9-0121 / 980216-H2
Matrix: Liquid

Work Order #: 9802B38-03-07

Reported: Mar 10, 1998

QUALITY CONTROL DATA REPORT

Analyte: Diesel

QC Batch#: GC0223980HBEXC
Analy. Method: EPA 8015M
Prep. Method: EPA 3510

Analyst: A. Porter
MS/MSD #: 9802B3807
Sample Conc.: 68
Prepared Date: 2/23/98
Analyzed Date: 2/24/98
Instrument I.D.#: GCHP19
Conc. Spiked: 1000 µg/L

Result: 960
MS % Recovery: 89

Dup. Result: 870
MSD % Recov.: 80

RPD: 9.8
RPD Limit: 0-50

LCS #: BLK022398

Prepared Date: 2/23/98
Analyzed Date: 2/24/98
Instrument I.D.#: GCHP19
Conc. Spiked: 1000 µg/L

LCS Result: 780
LCS % Recov.: 78

MS/MSD 50-150
LCS 60-140
Control Limits

SEQUOIA ANALYTICAL

Peggy Penner
Project Manager

Please Note:

The LCS is a control sample of known, interferent-free matrix that is analyzed using the same reagents, preparation, and analytical methods employed for the samples. The matrix spike is an aliquot of sample fortified with known quantities of specific compounds and subjected to the entire analytical procedure. If the recovery of analytes from the matrix spike does not fall within specified control limits due to matrix interference, the LCS recovery is to be used to validate the batch.

** MS= Matrix Spike, MSD=MS Duplicate, RPD=Relative % Difference

9802B38.BLA <7>





Sequoia
Analytical

680 Chesapeake Drive
404 N. Wiget Lane
819 Striker Avenue, Suite 8

Redwood City, CA 94063
Walnut Creek, CA 94598
Sacramento, CA 95834

(650) 364-9600
(510) 988-9600
(916) 921-9600

FAX (650) 364-9233
FAX (510) 988-9673
FAX (916) 921-0100

Blaine Tech Services
1680 Rogers Avenue
San Jose, CA 95112
Attention: Fran Thie

Client Proj. ID: Chevron 9-0121/980216-H2

Received: 02/17/98

Lab Proj. ID: 9802B38

Reported: 03/02/98

LABORATORY NARRATIVE

In order to properly interpret this report, it must be reproduced in its entirety. This report contains a total of 23 pages including the laboratory narrative, sample results, quality control, and related documents as required (cover page, COC, raw data, etc.).

TPPH Note: Sample 9802B38-01 was diluted 5-fold.
Sample 9802B38-02 was diluted 20-fold.
Sample 9802B38-03 was diluted 5-fold.

SEQUOIA ANALYTICAL


Peggy Penner
Project Manager



Chevron U.S.A. Inc.
P.O. BOX 5004
San Ramon, CA 94583
FAX (415)842-9591

Chevron Facility Number 9-0121
Facility Address 3026 Lakeshore Ave., Oakland, CA
Consultant Project Number 980216-H2
Consultant Name Blaine Tech Services, Inc.
Address 1680 Rogers Ave., San Jose, CA 95112
Project Contact (Name) Fran Thie
(Phone) (408) 573-0555 (Fax Number) (408) 573-7771

Chevron Contact (Name) Phil Briggs
(Phone) (510) 842-9136
Laboratory Name Sequoia
Laboratory Release Number 9029940
Samples Collected by (Name) Morgan H.
Collection Date 2/16/98
Signature [Signature]

Sample Number	Lab Sample Number	Number of Containers	Matrix S = Soil W = Water A = Air C = Charcoal	Type G = Grab C = Composite D = Discrete	Time	Sample Preservation	Iced (Yes or No)	Analytes To Be Performed <u>980 L038</u>										Remarks	
								BTX + TPH CAS/MTBE (8020 + 8015)	TPH Diesel (8015)	Oil and Greases (8520)	Purgeable Halocarbons (8010)	Purgeable Aromatics (8020)	Purgeable Organics (8240)	Extractable Organics (8270)	Metals Cd, Cr, Pb, Zn, Ni (ICAP or AA)				
MW-1 ✓	11	5	W	D	1330		Yes	X	X										
MW-3 ✓	12	4			1250														
MW-4 ✓	13	4			1941														
MW-5 ✓	14	5			1125														
MW-6 ✓	15	1			1315														
MW-7 ✓	16	1			1205														
MW-8 ✓	17	1			1146														
TB ✓	18	2																	

DO NOT BILL FOR TB-LB

17 11 26

41/HCH

Relinquished By (Signature) <u>[Signature]</u>	Organization <u>BTS</u>	Date/Time <u>2/17/98 10:15</u>	Received By (Signature) <u>[Signature]</u>	Organization	Date/Time <u>2/17/98 10:35</u>	Turn Around Time (Circle Choice) 24 Hrs. 48 Hrs. 5 Days 10 Days <u>As Contracted</u>
Relinquished By (Signature) <u>[Signature]</u>	Organization <u>SA</u>	Date/Time <u>2/17/98 11:25</u>	Received By (Signature)	Organization	Date/Time	
Relinquished By (Signature)	Organization	Date/Time	Received For Laboratory By (Signature) <u>[Signature]</u>	Organization	Date/Time <u>2/17/98 11:26</u>	

Field Data Sheets

CHEVRON WELL MONITORING DATA SHEET

Project #: <u>980216-42</u>	Station #: <u>9-0121</u>
Sampler: <u>MH</u>	Date: <u>2/16/98</u>
Well I.D.: <u>MW-1</u>	Well Diameter: 2 3 <u>4</u> 6 8 <u> </u>
Total Well Depth: <u>19.12</u>	Depth to Water: <u>8.37</u>
Depth to Free Product:	Thickness of Free Product (feet):
Referenced to: <u>PVC</u> Grade	D.O. Meter (if req'd): YSI HACH

Well Diameter	Multiplier	Well Diameter	Multiplier
2"	0.16	5"	1.02
3"	0.37	6"	1.47
4"	0.65	Other	radius ² * 0.163

Purge Method:	Sampling Method:
<input type="checkbox"/> Bailer <input type="checkbox"/> Disposable Bailer <input type="checkbox"/> Middleburg <input checked="" type="checkbox"/> Electric Submersible <input type="checkbox"/> Extraction Pump Other: _____	<input type="checkbox"/> Bailer <input checked="" type="checkbox"/> Disposable Bailer <input type="checkbox"/> Extraction Port Other: _____

<u>10.2</u>	x	<u>3</u>	=	<u>30.6</u>	Gals.
1 Case Volume (Gals.)		Specified Volumes		Calculated Volume	

Time	Temp (°F)	pH	Cond.	Gals. Removed	Observations
<u>1323</u>	<u>60.4</u>	<u>7.9</u>	<u>2400</u>	<u>11</u>	
<u>1325</u>	<u>61.8</u>	<u>7.7</u>	<u>1000</u>	<u>22</u>	
<u>1326</u>	<u>62.2</u>	<u>7.6</u>	<u>1000</u>	<u>33</u>	

Did well dewater? Yes <input type="checkbox"/> <u>No</u>	Gallons actually evacuated: <u>33</u>
Sampling Time: <u>1330</u>	Sampling Date: <u>2/16</u>
Sample I.D.: <u>MW-1</u>	Laboratory: <u>Sequoia</u> GTEL N. Creek Assoc. Labs
Analyzed for: <u>TPH-G BTEX MTBE TPH-D</u> Other:	
Duplicate I.D.:	Analyzed for: TPH-G BTEX MTBE TPH-D Other:
D.O. (if req'd):	Pre-purge: <u> </u> mg/L Post-purge: <u> </u> mg/L
O.R.P. (if req'd):	Pre-purge: <u> </u> mV Post-purge: <u> </u> mV

CHEVRON WELL MONITORING DATA SHEET

Project #: 980216-H2	Station #: 9-0121
Sampler: MH	Date: 2/16/98
Well I.D.: MW-5	Well Diameter: (2) 3 4 6 8
Total Well Depth: 32.61	Depth to Water: 9.97
Depth to Free Product:	Thickness of Free Product (feet):
Referenced to: (PVC) Grade	D.O. Meter (if req'd): YSI HACH

Well Diameter	Multiplier	Well Diameter	Multiplier
2"	0.16	5"	1.02
3"	0.37	6"	1.47
4"	0.65	Other	radius ² * 0.163

Purge Method: <input type="checkbox"/> Bailer <input checked="" type="checkbox"/> Disposable Bailer <input type="checkbox"/> Middleburg <input type="checkbox"/> Electric Submersible <input type="checkbox"/> Extraction Pump Other: _____	Sampling Method: <input type="checkbox"/> Bailer <input checked="" type="checkbox"/> Disposable Bailer <input type="checkbox"/> Extraction Port Other: _____
--	---

3.4	x	3	=	10.2	Gals.
1 Case Volume (Gals.)		Specified Volumes		Calculated Volume	

Time	Temp (°F)	pH	Cond.	Gals. Removed	Observations
1111	65.2	7.5	1200	3.5	
1116	65.6	7.5	1200	7.0	
1122	65.8	7.4	1200	9.5	

Did well dewater? Yes <input type="checkbox"/> No <input checked="" type="checkbox"/>	Gallons actually evacuated: 9.5
Sampling Time: 1125	Sampling Date: 2/16
Sample I.D.: MW-5	Laboratory: (Sequoia) GTEL N. Creek Assoc. Labs
Analyzed for: (TPH-G BTEX MTBE TPH-D) Other:	
Duplicate I.D.:	Analyzed for: TPH-G BTEX MTBE TPH-D Other:
D.O. (if req'd):	Pre-purge: mg/L Post-purge: mg/L
O.R.P. (if req'd):	Pre-purge: mV Post-purge: mV

CHEVRON WELL MONITORING DATA SHEET

Project #: <u>980216-142</u>	Station #: <u>9-0121</u>
Sampler: <u>MH</u>	Date: <u>2/16/98</u>
Well I.D.: <u>MW-6</u>	Well Diameter: <u>2</u> 3 4 6 8 _____
Total Well Depth: <u>18.72</u>	Depth to Water: <u>4.76</u>
Depth to Free Product:	Thickness of Free Product (feet):
Referenced to: <u>PVC</u> Grade	D.O. Meter (if req'd): YSI HACH

Well Diameter	Multiplier	Well Diameter	Multiplier
2"	0.16	5"	1.02
3"	0.37	6"	1.47
4"	0.65	Other	radius ² * 0.163

Purge Method: Bailer Sampling Method: Bailer
 Disposable Bailer Disposable Bailer
 Middleburg Extraction Port
 Electric Submersible
 Extraction Pump
 Other: _____

<u>2.0</u>	x	<u>3</u>	=	<u>6.0</u>	Gals.
1 Case Volume (Gals.)		Specified Volumes		Calculated Volume	

Time	Temp (°F)	pH	Cond.	Gals. Removed	Observations
<u>1305</u>	<u>63.2</u>	<u>6.8</u>	<u>710,000</u>	<u>2</u>	<u>Odor</u>
<u>1308</u>	<u>63.6</u>	<u>6.5</u>	<u>710,000</u>	<u>4</u>	<u>"</u>
<u>1311</u>	<u>63.5</u>	<u>6.6</u>	<u>710,000</u>	<u>6</u>	<u>"</u>

Did well dewater? Yes No Gallons actually evacuated: 6

Sampling Time: 1315 Sampling Date: 2/16

Sample I.D.: MW-6 Laboratory: Sequoia GTEL N. Creek Assoc. Labs

Analyzed for: TPH-G BTEX MTBE TPH-D Other: _____

Duplicate I.D.: _____ Analyzed for: TPH-G BTEX MTBE TPH-D Other: _____

D.O. (if req'd):	Pre-purge:	mg/L	Post-purge:	mg/L
O.R.P. (if req'd):	Pre-purge:	mV	Post-purge:	mV

CHEVRON WELL MONITORING DATA SHEET

Project #: <u>980216-42</u>	Station #: <u>9-0121</u>
Sampler: <u>MH</u>	Date: <u>2/16/99</u>
Well I.D.: <u>MW-7</u>	Well Diameter: <u>(2)</u> 3 4 6 8 _____
Total Well Depth: <u>14.82</u>	Depth to Water: <u>1.83</u>
Depth to Free Product:	Thickness of Free Product (feet):
Referenced to: <u>(PVC)</u> Grade	D.O. Meter (if req'd): YSI HACH

Well Diameter	Multiplier	Well Diameter	Multiplier
2"	0.16	5"	1.02
3"	0.37	6"	1.47
4"	0.65	Other	radius ² * 0.163

Purge Method: <input type="checkbox"/> Bailer <input checked="" type="checkbox"/> Disposable Bailer <input type="checkbox"/> Middleburg <input type="checkbox"/> Electric Submersible <input type="checkbox"/> Extraction Pump Other: _____	Sampling Method: <input type="checkbox"/> Bailer <input checked="" type="checkbox"/> Disposable Bailer <input type="checkbox"/> Extraction Port Other: _____
--	---

<u>1.9</u>	x	<u>3</u>	=	<u>5.7</u>	Gals.
1 Case Volume (Gals.)		Specified Volumes		Calculated Volume	

Time	Temp (°F)	pH	Cond.	Gals. Removed	Observations
1156	59.0	7.6	1000	2	
1159	60.2	7.5	1000	4	
1203	60.0	7.4	1000	6	

Did well dewater? Yes <input type="checkbox"/> No <input checked="" type="checkbox"/>	Gallons actually evacuated: <u>6</u>
Sampling Time: <u>1205</u>	Sampling Date: <u>2/16</u>
Sample I.D.: <u>MW-7</u>	Laboratory: <u>(Sequoia)</u> GTEL N. Creek Assoc. Labs
Analyzed for: <u>(TPH-G BTEX MTBE TPH-D)</u> Other:	
Duplicate I.D.:	Analyzed for: TPH-G BTEX MTBE TPH-D Other:
D.O. (if req'd):	Pre-purge: _____ mg/L Post-purge: _____ mg/L
O.R.P. (if req'd):	Pre-purge: _____ mV Post-purge: _____ mV

CHEVRON WELL MONITORING DATA SHEET

Project #: <u>980216-H2</u>	Station #: <u>9-0121</u>
Sampler: <u>MH</u>	Date: <u>2/16/98</u>
Well I.D.: <u>MW-8</u>	Well Diameter: <u>(2)</u> 3 4 6 8 _____
Total Well Depth: <u>25.11</u>	Depth to Water: <u>7.94</u>
Depth to Free Product:	Thickness of Free Product (feet):
Referenced to: <u>(PVC)</u> Grade	D.O. Meter (if req'd): YSI HACH

Well Diameter	Multiplier	Well Diameter	Multiplier
2"	0.16	5"	1.02
3"	0.37	6"	1.47
4"	0.65	Other	radius ² * 0.163

Purge Method: Bailer Sampling Method: Bailer
 Disposable Bailer Disposable Bailer
 Middleburg Extraction Port
 Electric Submersible Other: _____
 Extraction Pump
 Other: _____

<u>2.5</u>	x	<u>3</u>	=	<u>7.5</u>	Gals.
1 Case Volume (Gals.)		Specified Volumes		Calculated Volume	

Time	Temp (°F)	pH	Cond.	Gals. Removed	Observations
1135	61.4	7.6	2100	2.5	
1140	61.8	7.5	2000	5.0	
1144	62.2	7.5	2000	7.5	

Did well dewater? Yes No Gallons actually evacuated: 7.5

Sampling Time: 1146 Sampling Date: 2/16

Sample I.D.: MW-8 Laboratory: (Sequoia) GTEL N. Creek Assoc. Labs

Analyzed for: (TPH-G BTEX MTBE TPH-D) Other: _____

Duplicate I.D.: _____ Analyzed for: TPH-G BTEX MTBE TPH-D Other: _____

D.O. (if req'd):	Pre-purge:	mg/L	Post-purge:	mg/L
O.R.P. (if req'd):	Pre-purge:	mV	Post-purge:	mV