

BLAINE
TECH SERVICES, INC.



1680 ROGERS AVENUE
SAN JOSE, CALIFORNIA 95112
(408) 573-7771 FAX
(408) 573-0555 PHONE

ENVIRONMENTAL
PROTECTION

97 AUG -7 PM 3:59

July 30, 1997

Phil Briggs
Chevron U.S.A. Products Company
P.O. Box 6004
San Ramon, CA 94583-0904

2nd Quarter 1997 Monitoring at 9-0121

Second Quarter 1997 Groundwater Monitoring at
Chevron Service Station Number 9-0121
3026 Lakeshore Avenue
Oakland, CA

Monitoring Performed on June 30, 1997

Groundwater Sampling Report 970630-T-7

This report covers the routine quarterly monitoring of groundwater wells at this Chevron facility. Blaine Tech Services, Inc.'s work at the site includes inspection, gauging, evacuation, purgewater containment, sample collection and sample handling in accordance with standard procedures that conform to Regional Water Quality Control Board requirements.

Routine field data collection includes depth to water, total well depth, thickness of any separate immiscible layer, water column volume, calculated volume of a three-case volume purge, elapsed evacuation time, total volume of water removed, and standard water parameter instrument readings. Sample material is collected, contained, stored, and transported to the laboratory in conformance with EPA standards. Purgewater is, likewise, collected and transported to McKittrick Waste Treatment Site for disposal.

Basic field information is presented alongside analytical values excerpted from the laboratory report in the cumulative table of **WELL DATA AND ANALYTICAL RESULTS**. The full analytical report for the most recent samples is located in the **Analytical Appendix**. The table

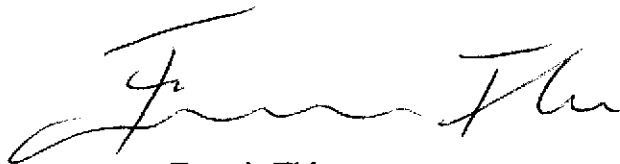
also contains new groundwater elevation calculations taken from the computer plotted gradient map which is located in the **Professional Engineering Appendix**.

At a minimum, Blaine Tech Services, Inc. field personnel are certified upon completion of a forty-hour Hazardous Materials and Emergency Response training course per 29 CFR 1910.120. Field personnel are also enrolled in annual eight hour refresher courses.

Blaine Tech Services, Inc. conducts sampling and documentation assignments of this type as an independent third party. In order to avoid compromising the objectivity necessary for the proper and disinterested performance of this work, Blaine Tech Services, Inc. concentrates on objective data collection and does not participate in the interpretation of analytical results, the definition of geological or hydrological conditions, the formulation of recommendations, or the marketing of remedial systems.

Please call if you have any questions.

Yours truly,

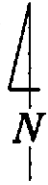
A handwritten signature in black ink, appearing to read 'Francis Thie', written in a cursive style.

Francis Thie
Vice President

FPT/aa

attachments: Professional Engineering Appendix
Cumulative Table of Well Data and Analytical Results
Analytical Appendix
Field Data Sheets

Professional Engineering Appendix

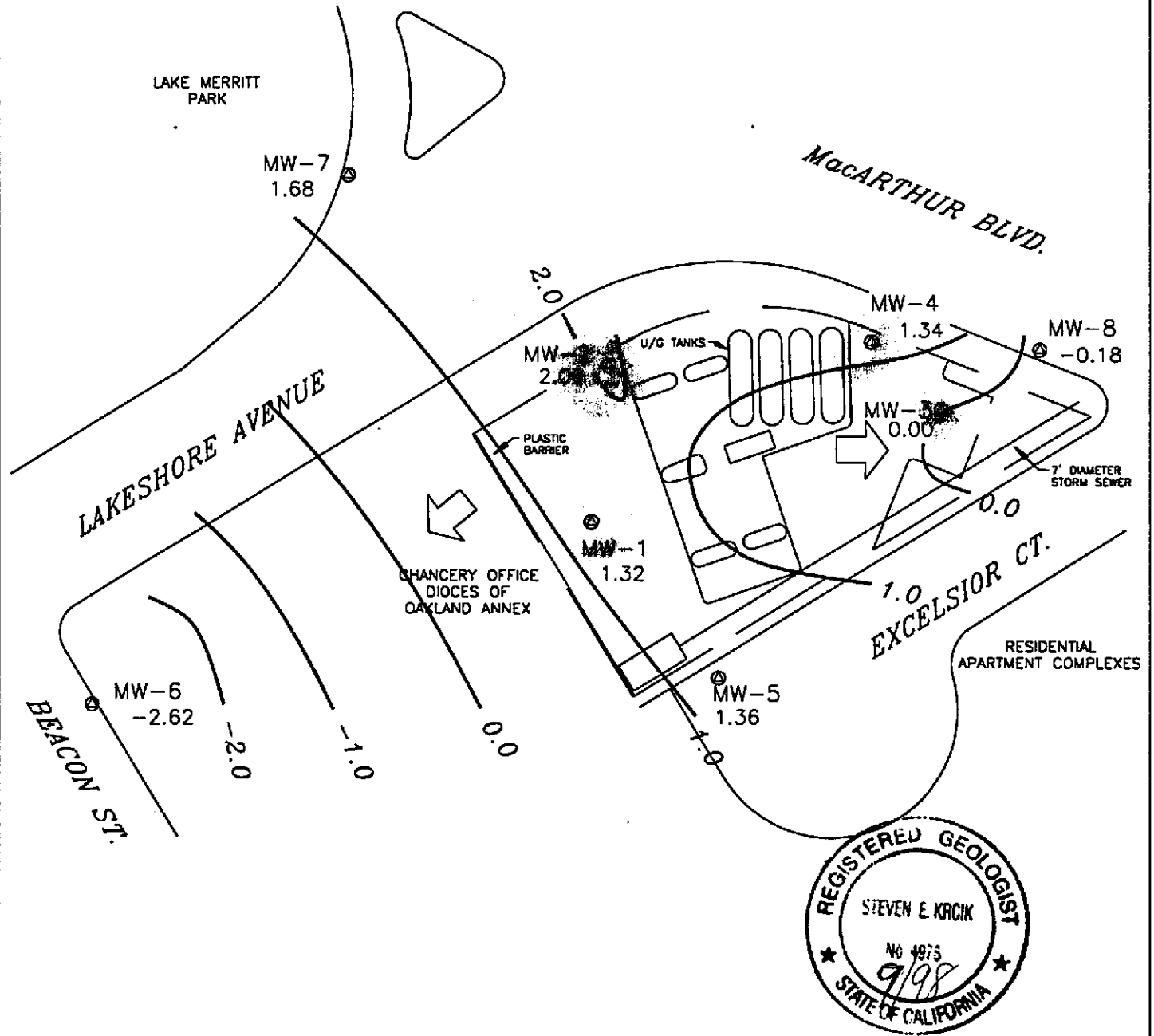


SCALE (ft)



EXPLANATION

- ⊙ MONITORING WELL LOCATION
- 2.06 GROUNDWATER ELEVATION (FT, MSL)
- 2.0 — GROUNDWATER ELEVATION CONTOUR (FT, MSL)
- ⇨ APPROXIMATE GROUNDWATER FLOW DIRECTION;
APPROXIMATE GRADIENT = 0.02



Basemap from Geoconsultants, Inc.

PREPARED BY

RRM
engineering contracting firm

Chevron Station 9-0121
3026 Lakeshore Avenue
Oakland, California

GROUNDWATER ELEVATION CONTOUR MAP,
JUNE 30, 1997

FIGURE:
1
PROJECT:
DAC04

**Table of
Well Data and
Analytical Results**

Cumulative Table of Well Data and Analytical Results

Vertical Measurements are in feet.

Volumetric Measurements are in gallons.

Analytical results are in parts per billion (ppb)

DATE	Well Head Elev.	Ground Water Elev.	Depth To Water	SPH Thickness	SPH Removed	Total SPH Removed	Notes	TPH-Gasoline	Benzene	Toluene	Ethyl-Benzene	Xylene	TPH-Diesel	TDS	MTBE
MW-1															
08/20/91	6.82	1.62	5.20	--	--	--	--	5100	1700	21	220	34	260	--	--
09/30/91	6.82	1.15	5.67	Sheen	--	--	--	--	--	--	--	--	--	--	--
10/28/91	6.82	1.50	5.30	0.03	--	--	--	--	--	--	--	--	--	--	--
01/08/92	6.82	1.67	5.15	Sheen	--	--	--	5400	770	13	95	31	4400	--	--
01/13/92	6.82	--	--	--	--	--	--	--	--	--	--	--	--	--	--
06/23/92	6.89	1.48	5.41	--	--	--	--	7700	1500	40	230	100	2000	--	--
08/24/92	6.89	1.12	5.77	--	--	--	--	--	--	--	--	--	--	--	--
09/21/92	6.89	1.00	5.89	--	--	--	--	3500	1700	28	190	78	<50	--	--
10/26/92	6.89	0.95	5.94	--	--	--	--	--	--	--	--	--	--	--	--
12/23/92	6.89	2.18	4.71	--	--	--	--	60,000	7100	240	2000	1300	5500	--	--
01/08/93	6.89	--	--	--	--	--	--	--	--	--	--	--	--	--	--
03/25/93	6.89	2.17	4.72	--	--	--	--	530	1100	41	67	79	<10	--	--
06/11/93	6.89	5.37	5.07	--	--	--	--	7000	1900	33	120	69	--	840	9600
09/29/93	6.89	1.13	5.76	--	--	--	--	6600	1600	28	43	74	<10	--	--
12/20/93	6.89	1.74	5.15	--	--	--	--	6300	1900	36	82	65	<10	--	--
03/07/94	6.89	2.21	4.68	--	--	--	--	7700	1100	55	66	38	<10	--	12,000
06/17/94	6.89	1.83	5.06	--	--	--	--	4300	710	12	90	38	2200	--	--
09/12/94	6.89	1.24	5.65	--	--	--	--	6400	1500	<25	180	<25	2500	--	12,000
11/30/94	6.89	2.32	4.57	--	--	--	--	4900	690	26	97	60	2300*	--	3900
03/24/95	6.89	3.91	2.98	--	--	--	--	1800	160	7.3	11	14	1400**	--	1300
06/27/95	6.89	1.87	5.02	--	--	--	--	4600	1300	11	97	13	2300**	--	5100
09/28/95	6.89	1.59	5.30	--	--	--	--	6600	1500	<20	<20	<20	3900**	--	5800
12/19/95	6.89	2.21	4.68	--	--	--	--	3800	930	<10	100	<10	2600**	--	6300
02/28/96	6.89	3.27	3.62	--	--	--	--	3600	280	<5.0	18	5.5	1800**	--	2200
06/25/96	6.89	1.87	5.02	--	--	--	--	4700	1600	36	150	31	3000	--	3000
12/17/96	6.89	2.23	4.66	--	--	--	--	7800	1000	28	340	63	2700***	--	1200
03/31/97	6.89	2.01	4.88	--	--	--	--	5300	590	55	210	53	2200**	--	950
06/30/97	6.89	1.32	5.57	--	--	--	--	4400	350	<10	<10	11	2200**	--	580

* Chromatogram pattern indicates a non-diesel mix.

** Chromatogram pattern indicates an unidentified hydrocarbon.

*** Chromatogram pattern indicates an unidentified hydrocarbon and weathered diesel.

Cumulative Table of Well Data and Analytical Results

Vertical Measurements are in feet.

Volumetric Measurements are in gallons.

Analytical results are in parts per billion (ppb)

DATE	Well Head Elev.	Ground Water Elev.	Depth To Water	SPH Thickness	SPH Removed	Total SPH Removed	Notes	TPH-Gasoline	Benzene	Toluene	Ethyl-Benzene	Xylene	TPH-Diesel	TDS	MTBE
MW-2															
08/20/91	6.27	1.92	4.35	--	--	--	--	9300	3700	55	530	75	600	--	--
09/30/91	6.27	1.28	4.99	--	--	--	--	3500	2600	47	440	68	--	--	--
10/28/91	6.27	1.36	4.91	--	--	--	--	4600	1800	29	290	53	--	--	--
01/08/92	6.27	1.63	4.64	Sheen	--	--	--	14,000	4300	70	<25	130	--	--	--
01/13/92	6.27	--	--	--	--	--	--	--	--	--	--	--	38,000	--	--
06/23/92	6.27	1.63	4.64	0.02	--	--	--	--	--	--	--	--	--	--	--
08/24/92	6.27	1.34	4.94	0.02	--	--	--	--	--	--	--	--	--	--	--
09/21/92	6.27	1.20	5.08	0.01	--	--	--	--	--	--	--	--	--	--	--
10/26/92	6.27	0.34	5.93	--	--	--	--	--	--	--	--	--	--	--	--
12/23/92	6.27	--	--	--	--	--	--	21,000	5400	59	1300	160	160,000	--	--
01/08/93	6.27	2.57	3.70	--	--	--	--	--	--	--	--	--	--	--	--
03/25/93	6.27	2.89	3.38	Sheen	--	--	--	--	--	--	--	--	--	--	--
06/11/93	6.27	2.09	4.18	--	--	--	--	5900	1100	23	240	51	--	2300	--
09/29/93	6.27	0.07	6.20	--	--	--	--	--	--	--	--	--	--	--	--
12/20/93	6.27	1.94	4.35	0.02	--	--	--	--	--	--	--	--	--	--	--
03/07/94	6.27	2.60	3.67	--	--	--	--	26,000	5700	170	1000	150	<10	--	--
06/17/94	6.27	2.25	4.02	Sheen	--	--	--	--	--	--	--	--	--	--	--
09/12/94	6.27	1.45	4.83	0.01	--	--	--	--	--	--	--	--	--	--	--
11/30/94	6.27	2.27	4.00	--	--	--	Inaccessible	--	--	--	--	--	--	--	--
03/24/95	6.27	2.73	4.01	0.59	--	--	--	--	--	--	--	--	--	--	--
06/27/95	6.27	1.71	4.96	0.50	0.013	0.013	--	--	--	--	--	--	--	--	--
09/28/95	6.27	2.62	4.25	0.75	0.013	0.026	--	--	--	--	--	--	--	--	--
12/19/95	6.27	1.99	4.76	0.60	0.010	0.036	--	--	--	--	--	--	--	--	--
02/28/96	6.27	1.99	4.58	0.38	0.008	0.044	--	--	--	--	--	--	--	--	--
06/25/96	6.27	2.36	4.29	0.47	0.030	0.074	--	--	--	--	--	--	--	--	--
12/17/96	6.27	2.22	4.16	0.14	--	0.074	--	--	--	--	--	--	--	--	--
03/31/97	6.27	2.34	4.07	0.18	0.030	0.104	--	--	--	--	--	--	--	--	--
06/30/97	6.27	2.06	4.32	0.14	0.030	0.134	--	--	--	--	--	--	--	--	--

Cumulative Table of Well Data and Analytical Results

Vertical Measurements are in feet.

Volumetric Measurements are in gallons.

Analytical results are in parts per billion (ppb)

DATE	Well Head Elev.	Ground Water Elev.	Depth To Water	SPH Thickness	SPH Removed	Total SPH Removed	Notes	TPH-Gasoline	Benzene	Toluene	Ethyl-Benzene	Xylene	TPH-Diesel	TDS	MTBE
MW-3															
08/20/91	8.71	0.26	8.45	--	--	--	--	3100	200	13	15	12	200	--	--
09/30/91	8.71	-0.03	8.74	--	--	--	--	1000	150	8.3	13	6.7	--	--	--
10/28/91	8.71	-0.05	8.76	--	--	--	--	1200	120	6.7	11	7.5	--	--	--
01/08/92	8.71	-0.06	8.77	--	--	--	--	410	120	0.9	4.1	3.4	--	--	--
01/13/92	8.71	--	--	--	--	--	--	--	--	--	--	--	220	--	--
06/23/92	8.71	0.03	8.68	--	--	--	--	630	43	0.8	8.2	3.4	<50	--	--
08/24/92	8.71	-0.14	8.85	--	--	--	--	--	--	--	--	--	--	--	--
09/21/92	8.71	-0.23	8.94	--	--	--	--	1800	730	1.4	66	39	<50	--	--
10/26/92	8.71	-0.36	9.07	--	--	--	--	--	--	--	--	--	--	--	--
12/23/92	8.71	--	--	--	--	--	--	840	270	3.4	15	4.2	850	--	--
01/08/93	8.71	1.02	7.69	--	--	--	--	--	--	--	--	--	--	--	--
03/25/93	8.71	0.97	7.74	--	--	--	--	760	270	4.0	10	5.0	<10	--	--
06/11/93	8.71	0.19	8.52	--	--	--	--	200	32	1.0	5.0	2.0	--	5600	--
09/29/93	8.71	2.66	6.05	--	--	--	--	9300	2800	60	270	62	--	--	--
12/20/93	8.71	-0.12	8.83	--	--	--	--	460	250	4.0	8.0	4.0	<10	--	--
03/07/94	8.71	0.64	8.07	--	--	--	--	2400	260	13	35	18	<10	--	--
06/17/94	8.71	0.19	8.52	--	--	--	--	1000	200	4.0	6.6	6.7	<50	--	--
09/12/94	8.71	-0.21	8.92	--	--	--	--	360	130	3.4	4.8	3.3	<50	--	130
11/30/94	8.71	0.58	8.13	--	--	--	Inaccessible	--	--	--	--	--	--	--	--
03/24/95	8.71	1.93	6.78	--	--	--	--	4100	920	<10	23	<10	1200*	--	70
06/27/95	8.71	0.49	8.22	--	--	--	--	3100	640	16	31	<10	1000*	--	<50
09/28/95	8.71	-0.14	8.85	--	--	--	--	490	78	3.4	4.4	2.4	460*	--	38
12/19/95	8.71	0.69	8.02	--	--	--	--	2600	580	<10	25	<10	650*	--	<50
02/28/96	8.71	1.16	7.55	--	--	--	--	1500	510	<5.0	9.9	<5.0	780**	--	<25
06/25/96	8.71	0.34	8.37	--	--	--	--	1300	390	7.8	14	6.5	1200*	--	31
12/17/96	8.71	0.41	8.30	--	--	--	--	760	85	<1.2	5.9	5.1	1100*	--	<6.2
03/31/97	8.71	0.52	8.19	--	--	--	--	2000	380	12	24	12	1800*	--	<25
06/30/97	8.71	0.00	8.71	--	--	--	--	1900	340	9.9	23	6.1	620*	--	<25

* Chromatogram pattern indicates an unidentified hydrocarbon.

Cumulative Table of Well Data and Analytical Results

Vertical Measurements are in feet.				Volumetric Measurements are in gallons.			Analytical results are in parts per billion (ppb)								
DATE	Well Head Elev.	Ground Water Elev.	Depth To Water	SPH Thickness	SPH Removed	Total SPH Removed	Notes	TPH-Gasoline	Benzene	Toluene	Ethyl-Benzene	Xylene	TPH-Diesel	TDS	MTBE
MW-4															
08/20/91	7.37	1.32	5.05	--	--	--	--	1800	870	4.0	3.0	9.0	160	--	--
09/30/91	7.37	1.70	5.67	--	--	--	--	670	830	5.5	2.7	12	--	--	--
10/28/91	7.37	1.56	5.81	--	--	--	--	2800	990	5.8	4.8	19	--	--	--
01/08/92	7.37	2.03	5.34	--	--	--	--	2900	1200	10	7.0	18	--	--	--
01/13/92	7.37	--	--	--	--	--	--	--	--	--	--	--	1000	--	--
06/23/92	7.37	2.00	5.37	--	--	--	--	1600	380	6.5	3.0	12	<50	--	--
08/24/92	7.37	1.62	5.75	--	--	--	--	--	--	--	--	--	--	--	--
09/21/92	7.37	1.42	5.95	--	--	--	--	1200	480	5.6	3.7	11	<50	--	--
10/26/92	7.37	1.41	5.96	--	--	--	--	--	--	--	--	--	--	--	--
12/23/92	7.37	--	--	--	--	--	--	1500	700	3.6	3.2	11	1800	--	--
01/08/93	7.37	2.73	4.64	--	--	--	--	--	--	--	--	--	--	--	--
03/25/93	7.37	2.95	4.42	--	--	--	--	520	160	3.0	1.0	4.0	<10	--	--
06/11/93	7.37	2.25	5.12	--	--	--	--	1200	430	5.0	6.0	11	--	2600	--
09/29/93	7.37	1.57	5.80	--	--	--	--	1300	210	8.0	2.0	14	--	--	--
12/20/93	7.37	2.27	5.10	--	--	--	--	570	230	5.0	4.0	8.0	3900	--	--
03/07/94	7.37	2.36	5.01	--	--	--	--	2200	290	18	2.5	11	2600	--	22,000
06/17/94	7.37	1.55	5.82	--	--	--	--	2100	480	11	4.3	9.5	2800	--	--
09/12/94	7.37	1.73	5.64	--	--	--	--	1700	340	6.1	2.7	9.7	3000	--	63,000
11/30/94	7.37	1.79	5.58	--	--	--	Inaccessible	--	--	--	--	--	--	--	--
03/24/95	7.37	2.42	4.95	--	--	--	--	1500	280	<5.0	<5.0	6.9	3000*	--	12,000
06/27/95	7.37	-1.42	8.79	--	--	--	--	<10,000	310	<100	<100	<100	3100*	--	32,000
09/28/95	7.37	1.52	5.85	--	--	--	--	330	64	1.1	<0.5	<0.5	6300*	--	630
12/19/95	7.37	1.87	5.50	--	--	--	--	3000	520	<25	<25	<25	3400*	--	44,000
02/28/96	7.37	2.27	5.10	--	--	--	--	<10,000	230	<100	<100	<100	4700*	--	32,000
06/25/96	7.37	1.59	5.78	--	--	--	--	<10000	160	<100	<100	<100	3100	--	31,000
12/17/96	7.37	1.42	5.95	--	--	--	--	<5000	110	<50	<50	<50	3600**	--	22,000
03/31/97	7.37	1.75	5.62	--	--	--	--	<2500	130	<25	<25	<25	2700*	--	16,000
06/30/97	7.37	1.34	6.03	--	--	--	--	<2500	130	<25	<25	<25	2700*	--	14,000

* Chromatogram pattern indicates an unidentified hydrocarbon.

** Chromatogram pattern indicates an unidentified hydrocarbon and weathered diesel.

Cumulative Table of Well Data and Analytical Results

Vertical Measurements are in feet.				Volumetric Measurements are in gallons.			Analytical results are in parts per billion (ppb)									
DATE	Well Head Elev.	Ground Water Elev.	Depth To Water	SPH Thickness	SPH Removed	Total SPH Removed	Notes	TPH-Gasoline	Benzene	Toluene	Ethyl-Benzene	Xylene	TPH-Diesel	TDS	MTBE	
MW-5																
06/23/92	14.14	1.90	12.24	--	--	--	--	<50	<0.5	<0.5	<0.5	<0.5	<50	--	--	
08/24/92	14.14	1.85	12.29	--	--	--	--	--	--	--	--	--	--	--	--	
09/21/92	14.14	1.68	12.46	--	--	--	--	<50	<0.5	<0.5	<0.5	<0.5	60	--	--	
10/26/92	14.14	1.62	12.52	--	--	--	--	--	--	--	--	--	--	--	--	
12/23/92	14.14	3.02	11.12	--	--	--	--	--	--	--	--	--	--	--	--	
01/08/93	14.14	--	--	--	--	--	--	--	--	--	--	--	--	--	--	
03/25/93	14.14	4.40	9.74	--	--	--	--	<50	<0.5	<0.5	<0.5	0.9	<10	--	--	
06/11/93	14.14	3.70	10.44	--	--	--	--	<50	<0.5	<0.5	<0.5	<0.5	--	770	--	
09/29/93	14.14	2.22	11.92	--	--	--	--	<50	<0.5	0.6	<0.5	0.6	<10	--	--	
12/20/93	14.14	--	--	--	--	--	--	--	--	--	--	--	--	--	--	
03/07/94	14.14	2.80	11.34	--	--	--	--	<50	<0.5	<0.5	<0.5	<0.5	<10	--	--	
06/17/94	14.14	2.87	11.27	--	--	--	--	<50	<0.5	<0.5	<0.5	<0.5	<50	--	--	
09/12/94	14.14	1.28	12.86	--	--	--	--	<50	<0.5	<0.5	<0.5	<0.5	<50	--	--	
11/30/94	14.14	2.23	11.91	--	--	--	--	<50	<0.5	<0.5	<0.5	<0.5	<50	--	<5.0	
03/24/95	14.14	4.38	9.76	--	--	--	--	<50	<0.5	<0.5	<0.5	<0.5	99*	--	--	
06/27/95	14.14	2.74	11.40	--	--	--	--	<50	<0.5	<0.5	<0.5	<0.5	<50	--	--	
09/28/95	14.14	2.24	11.90	--	--	--	--	<50	<0.5	<0.5	<0.5	<0.5	55**	--	--	
12/19/95	14.14	1.56	12.58	--	--	--	--	<50	<0.5	<0.5	<0.5	<0.5	300**	--	--	
02/28/96	14.14	2.44	11.70	--	--	--	--	<50	<0.5	<0.5	<0.5	<0.5	53**	--	3.1	
06/25/96	14.14	2.71	11.43	--	--	--	--	<50	<0.5	<0.5	<0.5	<0.5	<50	--	<2.5	
12/17/96	14.14	2.74	11.40	--	--	--	--	<50	<0.5	<0.5	<0.5	<0.5	120**	--	36	
03/31/97	14.14	2.04	12.10	--	--	--	--	<50	<0.5	<0.5	<0.5	<0.5	89**	--	<2.5	
06/30/97	14.14	1.36	12.78	--	--	--	Sampled biannually	<50	<0.5	<0.5	<0.5	<0.5	150**	--	<2.5	
								--	--	--	--	--	--	--	--	

* Chromatogram pattern indicates a non-diesel mix.

** Chromatogram pattern indicates an unidentified hydrocarbon.

Cumulative Table of Well Data and Analytical Results

Vertical Measurements are in feet.

Volumetric Measurements are in gallons.

Analytical results are in parts per billion (ppb)

DATE	Well Head Elev.	Ground Water Elev.	Depth To Water	SPH Thickness	SPH Removed	Total SPH Removed	Notes	TPH-Gasoline	Benzene	Toluene	Ethyl-Benzene	Xylene	TPH-Diesel	TDS	MTBE
MW-6															
06/23/92	4.46	-0.68	5.14	--	--	--	--	<50	4.3	<0.5	0.8	0.9	120	--	--
08/24/92	4.46	-0.49	4.95	--	--	--	--	--	--	--	--	--	--	--	--
09/21/92	4.46	-0.44	4.90	--	--	--	--	<250	<2.5	<2.5	<2.5	<2.5	<50	--	--
10/26/92	4.46	-1.06	5.52	--	--	--	--	--	--	--	--	--	--	--	--
12/23/92	4.46	-0.94	5.40	--	--	--	--	<50	<0.5	<0.5	<0.5	<0.5	81	--	--
01/08/93	4.46	--	--	--	--	--	--	--	--	--	--	--	--	--	--
03/25/93	4.46	-1.64	6.10	--	--	--	--	<50	<0.5	<0.5	<0.5	0.7	<10	--	--
06/11/93	4.46	-2.10	6.56	--	--	--	--	<50	<0.5	<0.5	<0.5	<0.5	--	15,000	--
09/29/93	4.46	-0.71	5.17	--	--	--	--	<50	<0.5	<0.5	<0.5	<0.5	<10	--	--
12/20/93	4.46	-1.47	5.93	--	--	--	--	<50	<0.5	<0.5	<0.5	<0.5	<10	--	--
03/07/94	4.46	-0.81	5.27	--	--	--	--	54	<0.5	<0.5	<0.5	0.6	<10	--	--
06/17/94	4.46	--	--	--	--	--	--	--	--	--	--	--	--	--	--
09/12/94	4.46	-0.64	5.10	--	--	--	--	<50	<0.5	<0.5	<0.5	<0.5	<50	--	<50
11/30/94	4.46	-1.12	5.58	--	--	--	--	<50	<0.5	<0.5	<0.5	<0.5	800*	--	--
03/24/95	4.46	-1.87	6.33	--	--	--	--	<50	<0.5	<0.5	<0.5	<0.5	490**	--	--
06/27/95	4.46	-3.74	8.20	--	--	--	--	<50	<0.5	<0.5	<0.5	<0.5	300**	--	--
09/28/95	4.46	-0.19	4.65	--	--	--	--	120	1.1	<0.5	<0.5	<0.5	1200**	--	--
12/19/95	4.46	-1.58	6.04	--	--	--	--	<50	<0.5	<0.5	<0.5	<0.5	820**	--	<2.5
02/28/96	4.46	-1.54	6.00	--	--	--	--	<50	<0.5	<0.5	<0.5	<0.5	270**	--	<2.5
06/25/96	4.46	-1.71	6.17	--	--	--	--	97	<0.5	<0.5	<0.5	0.71	750**	--	<2.5
12/17/96	4.46	-1.67	6.13	--	--	--	--	65	<0.5	<0.5	<0.5	<0.5	540**	--	<2.5
03/31/97	4.46	-2.23	6.69	--	--	--	--	65	<0.5	<0.5	<0.5	<0.5	780**	--	<2.5
06/30/97	4.46	-2.62	7.08	--	--	--	Sampled biannually	--	--	--	--	--	--	--	--

* Chromatogram pattern indicates a non-diesel mix.

** Chromatogram pattern indicates an unidentified hydrocarbon.

Cumulative Table of Well Data and Analytical Results

Vertical Measurements are in feet.				Volumetric Measurements are in gallons.			Analytical results are in parts per billion (ppb)								
DATE	Well Head Elev.	Ground Water Elev.	Depth To Water	SPH Thickness	SPH Removed	Total SPH Removed	Notes	TPH- Gasoline	Benzene	Toluene	Ethyl- Benzene	Xylene	TPH- Diesel	TDS	MTBE
MW-7															
06/23/92	5.26	0.88	4.38	--	--	--	--	<50	4.7	<0.5	<0.5	<0.5	<50	--	--
08/24/92	5.26	-0.29	5.55	--	--	--	--	--	--	--	--	--	--	--	--
09/21/92	5.26	-0.39	5.65	--	--	--	--	<50	<0.5	<0.5	<0.5	<0.5	<50	--	--
10/26/92	5.26	-0.25	5.51	--	--	--	--	--	--	--	--	--	--	--	--
12/23/92	5.26	1.31	3.95	--	--	--	--	<50	2.9	<0.5	<0.5	<0.5	60	--	--
01/08/93	5.26	--	--	--	--	--	--	--	--	--	--	--	--	--	--
03/25/93	5.26	2.76	2.50	--	--	--	--	<50	<0.5	<0.5	<0.5	<0.5	<10	--	--
06/11/93	5.26	1.80	3.46	--	--	--	--	<50	0.6	<0.5	<0.5	<0.5	--	2200	--
09/29/93	5.26	-0.26	5.52	--	--	--	--	<50	2.0	1.0	1.0	7.0	<10	--	--
12/20/93	5.26	0.85	4.41	--	--	--	--	<50	2.0	<0.5	<0.5	<0.5	<10	--	--
03/07/94	5.26	2.64	2.62	--	--	--	--	<50	<0.5	<0.5	<0.5	<0.5	<10	--	--
06/17/94	5.26	1.99	3.27	--	--	--	--	<50	<0.5	<0.5	<0.5	<0.5	<50	--	--
09/12/94	5.26	1.15	4.11	--	--	--	--	<50	<0.5	<0.5	<0.5	<0.5	<50	--	<5.0
11/30/94	5.26	2.50	2.76	--	--	--	--	<50	<0.5	<0.5	<0.5	<0.5	92*	--	--
03/24/95	5.26	3.06	2.20	--	--	--	--	<50	<0.5	<0.5	<0.5	<0.5	<50	--	--
06/27/95	5.26	1.36	3.90	--	--	--	--	<50	<0.5	<0.5	<0.5	<0.5	69**	--	--
09/28/95	5.26	0.41	4.85	--	--	--	--	<50	<0.5	<0.5	<0.5	<0.5	84**	--	--
12/19/95	5.26	2.24	3.02	--	--	--	--	<50	<0.5	<0.5	<0.5	<0.5	84**	--	<2.5
02/28/96	5.26	3.83	1.43	--	--	--	--	<50	<0.5	<0.5	<0.5	<0.5	99**	--	<2.5
06/25/96	5.26	0.97	4.29	--	--	--	--	<50	<0.5	<0.5	<0.5	<0.5	110**	--	<2.5
12/17/96	5.26	3.08	2.18	--	--	--	--	<50	<0.5	<0.5	<0.5	<0.5	54**	--	<2.5
03/31/97	5.26	2.32	2.94	--	--	--	--	<50	<0.5	<0.5	<0.5	<0.5	100**	--	<2.5
06/30/97	5.26	1.68	3.58	--	--	--	Sampled annually	--	--	--	--	--	--	--	--

* Chromatogram pattern indicates a non-diesel mix.

** Chromatogram pattern indicates an unidentified hydrocarbon.

Cumulative Table of Well Data and Analytical Results

Vertical Measurements are in feet.			Volumetric Measurements are in gallons.				Analytical results are in parts per billion (ppb)									
DATE	Well Head Elev.	Ground Water Elev.	Depth To Water	SPH Thickness	SPH Removed	Total SPH Removed	Notes	TPH-Gasoline	Benzene	Toluene	Ethyl-Benzene	Xylene	TPH-Diesel	TDS	MTBE	
MW-8																
06/23/92	8.94	-15.20	24.14	--	--	--	--	<50	<0.5	<0.5	<0.5	<0.5	<50	--	--	
08/24/92	8.94	0.34	8.60	--	--	--	--	--	--	--	--	--	--	--	--	
09/21/92	8.94	0.55	8.39	--	--	--	--	94	<0.5	<0.5	<0.5	<0.5	<50	--	--	
10/26/92	8.94	-0.18	9.12	--	--	--	--	--	--	--	--	--	--	--	--	
12/23/92	8.94	0.83	8.11	--	--	--	--	<50	0.7	5.0	0.7	2.9	79	--	--	
01/08/93	8.94	--	--	--	--	--	--	--	--	--	--	--	--	--	--	
03/25/93	8.94	--	--	--	--	--	--	--	--	--	--	--	--	--	--	
06/11/93	8.94	0.55	8.39	--	--	--	--	<50	<0.5	<0.5	<0.5	<0.5	--	3500	--	
09/29/93	8.94	0.69	8.25	--	--	--	--	<50	<0.5	<0.5	<0.5	<0.5	<10	--	--	
12/20/93	8.94	0.48	8.46	--	--	--	--	<50	<0.5	0.6	<0.5	1.0	<10	--	--	
03/07/94	8.94	0.28	8.66	--	--	--	--	<50	<0.5	<0.5	<0.5	<0.5	<10	--	--	
06/17/94	8.94	0.12	8.82	--	--	--	--	<50	<0.5	<0.5	<0.5	<0.5	<50	--	--	
09/12/94	8.94	0.11	8.83	--	--	--	--	<50	<0.5	<0.5	<0.5	<0.5	<50	--	--	
11/30/94	8.94	0.31	8.63	--	--	--	--	<50	<0.5	<0.5	<0.5	<0.5	120*	--	<5.0	
03/24/95	8.94	0.43	8.51	--	--	--	--	<50	<0.5	<0.5	<0.5	<0.5	110**	--	--	
06/27/95	8.94	-0.03	8.97	--	--	--	--	<50	<0.5	<0.5	<0.5	<0.5	67**	--	--	
09/28/95	8.94	0.04	8.90	--	--	--	--	<50	<0.5	<0.5	<0.5	<0.5	91**	--	--	
12/19/95	8.94	0.54	8.40	--	--	--	--	<50	<0.5	<0.5	<0.5	<0.5	76**	--	<2.5	
02/28/96	8.94	0.50	8.44	--	--	--	--	<50	<0.5	<0.5	<0.5	<0.5	<50	--	<2.5	
06/25/96	8.94	0.05	8.89	--	--	--	--	<50	<0.5	<0.5	<0.5	<0.5	80**	--	<2.5	
12/17/96	8.94	0.49	8.45	--	--	--	--	<50	<0.5	<0.5	<0.5	<0.5	79**	--	<2.5	
03/31/97	8.94	0.18	8.76	--	--	--	--	<50	<0.5	<0.5	<0.5	<0.5	72**	--	3.6	
06/30/97	8.94	-0.18	9.12	--	--	--	Sampled annually	--	--	--	--	--	--	--	--	

* Chromatogram pattern indicates a non-diesel mix.

** Chromatogram pattern indicates an unidentified hydrocarbon.

Cumulative Table of Well Data and Analytical Results

Vertical Measurements are in feet.

Volumetric Measurements are in gallons.

Analytical results are in parts per billion (ppb)

DATE	Well Head Elev.	Ground Water Elev.	Depth To Water	SPH Thickness	SPH Removed	Total SPH Removed	Notes	TPH-Gasoline	Benzene	Toluene	Ethyl-Benzene	Xylene	TPH-Diesel	TDS	MTBE
TRIP BLANK															
08/24/92	--	--	--	--	--	--	--	--	--	--	--	--	--	--	--
09/21/92	--	--	--	--	--	--	--	--	--	--	--	--	--	--	--
10/26/92	--	--	--	--	--	--	--	<50	<0.5	<0.5	<0.5	<0.5	--	--	--
12/23/92	--	--	--	--	--	--	--	--	--	--	--	--	--	--	--
01/08/93	--	--	--	--	--	--	--	<50	<0.5	<0.5	<0.5	<0.5	--	--	--
03/25/93	--	--	--	--	--	--	--	--	--	--	--	--	--	--	--
06/11/93	--	--	--	--	--	--	--	<50	<0.5	<0.5	<0.5	<0.5	--	--	--
09/29/93	--	--	--	--	--	--	--	<50	<0.5	<0.5	<0.5	<0.5	--	--	--
12/20/93	--	--	--	--	--	--	--	<50	<0.5	<0.5	<0.5	<0.5	--	--	--
03/07/94	--	--	--	--	--	--	--	<50	<0.5	<0.5	<0.5	<0.5	--	--	--
06/17/94	--	--	--	--	--	--	--	<50	<0.5	<0.5	<0.5	<0.5	--	--	--
09/12/94	--	--	--	--	--	--	--	<50	<0.5	<0.5	<0.5	<0.5	--	--	--
11/30/94	--	--	--	--	--	--	--	<50	<0.5	<0.5	<0.5	1.0	--	--	--
03/24/95	--	--	--	--	--	--	--	<50	<0.5	<0.5	<0.5	<0.5	--	--	--
06/27/95	--	--	--	--	--	--	--	<50	<0.5	<0.5	<0.5	<0.5	--	--	--
09/28/95	--	--	--	--	--	--	--	<50	<0.5	<0.5	<0.5	<0.5	--	--	--
12/19/95	--	--	--	--	--	--	--	<50	<0.5	<0.5	<0.5	<0.5	--	--	--
02/28/96	--	--	--	--	--	--	--	<50	<0.5	<0.5	<0.5	<0.5	--	--	--
06/25/96	--	--	--	--	--	--	--	<50	<0.5	<0.5	<0.5	<0.5	--	--	--
12/17/96	--	--	--	--	--	--	--	<50	<0.5	<0.5	<0.5	<0.5	--	--	--
03/31/97	--	--	--	--	--	--	--	<50	<0.5	<0.5	<0.5	<0.5	--	--	<2.5
06/30/97	--	--	--	--	--	--	--	<50	<0.5	<0.5	<0.5	<0.5	--	--	<2.5
								<50	<0.5	<0.5	<0.5	<0.5	--	--	<2.5

Note: Blaine Tech Services, Inc. began routine monitoring of the groundwater wells at this site on November 1, 1994.
 Earlier field data and analytical results are drawn from the September 27, 1994 Groundwater Technology, Inc. report.

ABBREVIATIONS:

TPH = Total Petroleum Hydrocarbons

TDS = Total Dissolved Solids

MTBE = Methyl-tert-butyl ether

Analytical Appendix



Blaine Tech Services 1680 Rogers Avenue San Jose, CA 95112	Client Proj. ID: Chevron 9-0121/970630-T7 Sample Descript: MW1 Matrix: LIQUID Analysis Method: EPA 8015 Mod Lab Number: 9707068-01	Sampled: 06/30/97 Received: 07/01/97 Extracted: 07/08/97 Analyzed: 07/09/97 Reported: 07/14/97
--	--	--

QC Batch Number: GC0707970HBPEXA
Instrument ID: GCHP4A

Total Extractable Petroleum Hydrocarbons (TEPH)

Analyte	Detection Limit ug/L	Sample Results ug/L
TEPH as Diesel Chromatogram Pattern:	50 C9-C24	2200 Unidentified HC
Surrogates n-Pentacosane (C25)	Control Limits % 50 150	% Recovery 98

Results quantitated against a diesel standard.
Analytes reported as N.D. were not present above the stated limit of detection.

SEQUOIA ANALYTICAL - ELAP #1210


Peggy Penner
Project Manager





Blaine Tech Services 1680 Rogers Avenue San Jose, CA 95112	Client Proj. ID: Chevron 9-0121/970630-T7 Sample Descript: MW1 Matrix: LIQUID Analysis Method: 8015Mod/8020 Lab Number: 9707068-01	Sampled: 06/30/97 Received: 07/01/97 Analyzed: 07/08/97 Reported: 07/14/97
--	--	---

QC Batch Number: GC070897BTEX02A
Instrument ID: GCHP02

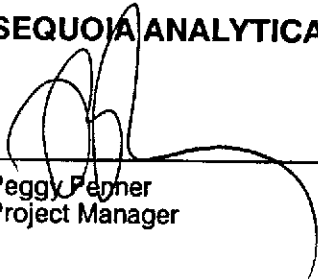
Total Purgeable Petroleum Hydrocarbons (TPPH) with BTEX and MTBE

Analyte	Detection Limit ug/L	Sample Results ug/L
TPPH as Gas	1000	4400
Methyl t-Butyl Ether	50	580
Benzene	10	350
Toluene	10	N.D.
Ethyl Benzene	10	N.D.
Xylenes (Total)	10	11
Chromatogram Pattern:		Gas

Surrogates	Control Limits %	% Recovery
Trifluorotoluene	70 130	89

Analytes reported as N.D. were not present above the stated limit of detection.

SEQUOIA ANALYTICAL - ELAP #1210


Peggy Penner
Project Manager





Blaine Tech Services 1680 Rogers Avenue San Jose, CA 95112	Client Proj. ID: Chevron 9-0121/970630-T7 Sample Descript: MW3 Matrix: LIQUID Analysis Method: EPA 8015 Mod Lab Number: 9707068-02	Sampled: 06/30/97 Received: 07/01/97 Extracted: 07/08/97 Analyzed: 07/09/97 Reported: 07/14/97
--	--	--

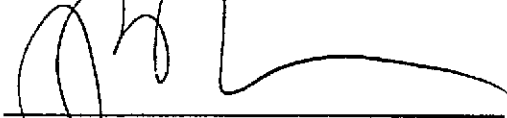
QC Batch Number: GC0707970HBPEXA
Instrument ID: GCHP4A

Total Extractable Petroleum Hydrocarbons (TEPH)

Analyte	Detection Limit ug/L	Sample Results ug/L
TEPH as Diesel Chromatogram Pattern:	50 C9-C24	620 Unidentified HC
Surrogates n-Pentacosane (C25)	Control Limits % 50 150	% Recovery 98

Results quantitated against a diesel standard.
Analytes reported as N.D. were not present above the stated limit of detection.

SEQUOIA ANALYTICAL - ELAP #1210



Peggy Penner
Project Manager





Blaine Tech Services 1680 Rogers Avenue San Jose, CA 95112	Client Proj. ID: Chevron 9-0121/970630-T7 Sample Descript: MW3 Matrix: LIQUID Analysis Method: 8015Mod/8020 Lab Number: 9707068-02	Sampled: 06/30/97 Received: 07/01/97 Analyzed: 07/08/97 Reported: 07/14/97
Attention: Fran Thie		

QC Batch Number: GC070897BTEX02A
Instrument ID: GCHP02

Total Purgeable Petroleum Hydrocarbons (TPPH) with BTEX and MTBE

Analyte	Detection Limit ug/L	Sample Results ug/L
TPPH as Gas	500	1900
Methyl t-Butyl Ether	25	N.D.
Benzene	5.0	340
Toluene	5.0	9.9
Ethyl Benzene	5.0	23
Xylenes (Total)	5.0	6.1
Chromatogram Pattern:		Gas
Surrogates	Control Limits %	% Recovery
Trifluorotoluene	70 130	88

Analytes reported as N.D. were not present above the stated limit of detection.

SEQUOIA ANALYTICAL - ELAP #1210


Peggy Penner
Project Manager





Blaine Tech Services 1680 Rogers Avenue San Jose, CA 95112	Client Proj. ID: Chevron 9-0121/970630-T7 Sample Descript: MW4 Matrix: LIQUID Analysis Method: EPA 8015 Mod Lab Number: 9707068-03	Sampled: 06/30/97 Received: 07/01/97 Extracted: 07/08/97 Analyzed: 07/09/97 Reported: 07/14/97
--	--	--

QC Batch Number: GC0707970HBPEXA
Instrument ID: GCHP4A

Total Extractable Petroleum Hydrocarbons (TEPH)

Analyte	Detection Limit ug/L	Sample Results ug/L
TEPH as Diesel Chromatogram Pattern:	50 C9-C24	2700 Unidentified HC
Surrogates n-Pentacosane (C25)	Control Limits % 50 150	% Recovery 142

Results quantitated against a diesel standard.
Analytes reported as N.D. were not present above the stated limit of detection.

SEQUOIA ANALYTICAL - ELAP #1210


Peggy Penner
Project Manager





Blaine Tech Services 1680 Rogers Avenue San Jose, CA 95112	Client Proj. ID: Chevron 9-0121/970630-T7 Sample Descript: MW4 Matrix: LIQUID Analysis Method: 8015Mod/8020 Lab Number: 9707068-03	Sampled: 06/30/97 Received: 07/01/97 Analyzed: 07/10/97 Reported: 07/14/97
--	--	---

QC Batch Number: GC071097BTEX21A
Instrument ID: GCHP21

Total Purgeable Petroleum Hydrocarbons (TPPH) with BTEX and MTBE

Analyte	Detection Limit ug/L	Sample Results ug/L
TPPH as Gas	2500	N.D.
Methyl t-Butyl Ether	125	14000
Benzene	25	130
Toluene	25	N.D.
Ethyl Benzene	25	N.D.
Xylenes (Total)	25	N.D.
Chromatogram Pattern:		
Surrogates	Control Limits %	% Recovery
Trifluorotoluene	70 130	110

Analytes reported as N.D. were not present above the stated limit of detection.

SEQUOIA ANALYTICAL - ELAP #1210

Peggy Penner
Project Manager





Blaine Tech Services 1680 Rogers Avenue San Jose, CA 95112	Client Proj. ID: Chevron 9-0121/970630-T7 Sample Descript: TB Matrix: LIQUID Analysis Method: 8015Mod/8020 Lab Number: 9707068-04	Sampled: 06/30/97 Received: 07/01/97 Analyzed: 07/08/97 Reported: 07/14/97
--	---	---

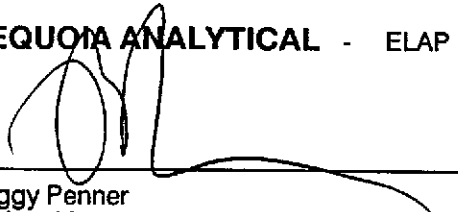
QC Batch Number: GC070897BTEX02A
Instrument ID: GCHP02

Total Purgeable Petroleum Hydrocarbons (TPPH) with BTEX and MTBE

Analyte	Detection Limit ug/L	Sample Results ug/L
TPPH as Gas	50	N.D.
Methyl t-Butyl Ether	2.5	N.D.
Benzene	0.50	N.D.
Toluene	0.50	N.D.
Ethyl Benzene	0.50	N.D.
Xylenes (Total)	0.50	N.D.
Chromatogram Pattern:		
Surrogates	Control Limits %	% Recovery
Trifluorotoluene	70 130	95

Analytes reported as N.D. were not present above the stated limit of detection.

SEQUOIA ANALYTICAL - ELAP #1210



Peggy Penner
Project Manager





Blaine Tech Services, Inc. 1680 Rogers Avenue San Jose, CA 95112 Attention: Fran Thie	Client Project ID: Chevron 9-0121 / 970630-T7 Matrix: Liquid Work Order #: 9707068 -01-02, 04	Reported: Jul 17, 1997
---	--	-------------------------------

QUALITY CONTROL DATA REPORT

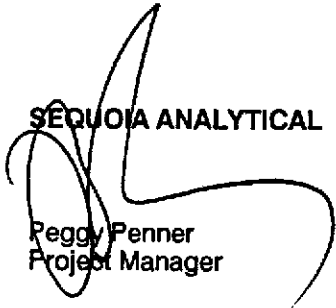
Analyte:	Benzene	Toluene	Ethyl Benzene	Xylenes	Gas
QC Batch#:	GC070897BTEX02A	GC070897BTEX02A	GC070897BTEX02A	GC070897BTEX02A	GC070897BTEX02A
Analy. Method:	EPA 8020	EPA 8020	EPA 8020	EPA 8020	EPA 8015M
Prep. Method:	EPA 5030	EPA 5030	EPA 5030	EPA 5030	EPA 5030

Analyst:	A. Miraftab	A. Miraftab	A. Miraftab	A. Miraftab	A. Miraftab
MS/MSD #:	9706G0101	9706G0101	9706G0101	9706G0101	9706G0101
Sample Conc.:	N.D.	N.D.	N.D.	N.D.	N.D.
Prepared Date:	7/8/97	7/8/97	7/8/97	7/8/97	7/8/97
Analyzed Date:	7/8/97	7/8/97	7/8/97	7/8/97	7/8/97
Instrument I.D.#:	GCHP2	GCHP2	GCHP2	GCHP2	GCHP2
Conc. Spiked:	10 µg/L	10 µg/L	10 µg/L	30 µg/L	60 µg/L
Result:	10	9.6	9.8	29	63
MS % Recovery:	100	96	98	97	105
Dup. Result:	9.7	9.3	9.4	28	65
MSD % Recov.:	97	93	94	93	108
RPD:	3.0	3.2	4.2	3.5	3.1
RPD Limit:	0-25	0-25	0-25	0-25	0-25

LCS #:	BLK070897	BLK070897	BLK070897	BLK070897	BLK070897
Prepared Date:	7/8/97	7/8/97	7/8/97	7/8/97	7/8/97
Analyzed Date:	7/8/97	7/8/97	7/8/97	7/8/97	7/8/97
Instrument I.D.#:	GCHP2	GCHP2	GCHP2	GCHP2	GCHP2
Conc. Spiked:	10 µg/L	10 µg/L	10 µg/L	30 µg/L	60 µg/L
LCS Result:	10	9.9	9.9	30	67
LCS % Recov.:	100	99	99	100	112

MS/MSD	60-140	60-140	60-140	60-140	60-140
LCS	70-130	70-130	70-130	70-130	70-130
Control Limits					

SEQUOIA ANALYTICAL



Peggy Fenner
Project Manager

Please Note:

The LCS is a control sample of known, interferent-free matrix that is analyzed using the same reagents, preparation, and analytical methods employed for the samples. The matrix spike is an aliquot of sample fortified with known quantities of specific compounds and subjected to the entire analytical procedure. If the recovery of analytes from the matrix spike does not fall within specified control limits due to matrix interference, the LCS recovery is to be used to validate the batch.

** MS=Matrix Spike, MSD=MS Duplicate, RPD=Relative % Difference

9707068.BLA <1>





Blaine Tech Services, Inc.
1680 Rogers Avenue
San Jose, CA 95112
Attention: Fran Thie

Client Project ID: Chevron 9-0121 / 970630-T7
Matrix: Liquid

Work Order #: 9707068-03

Reported: Jul 17, 1997

QUALITY CONTROL DATA REPORT

Analyte:	Benzene	Toluene	Ethyl Benzene	Xylenes	Gas
QC Batch#:	GC071097BTEX21A	GC071097BTEX21A	GC071097BTEX21A	GC071097BTEX21A	GC071097BTEX21A
Analy. Method:	EPA 8020	EPA 8020	EPA 8020	EPA 8020	EPA 8015M
Prep. Method:	EPA 5030	EPA 5030	EPA 5030	EPA 5030	EPA 5030

Analyst:	D. Jirsa	D. Jirsa	D. Jirsa	D. Jirsa	D. Jirsa
MS/MSD #:	9706G5501	9706G5501	9706G5501	9706G5501	9706G5501
Sample Conc.:	N.D.	N.D.	N.D.	N.D.	N.D.
Prepared Date:	7/10/97	7/10/97	7/10/97	7/10/97	7/10/97
Analyzed Date:	7/10/97	7/10/97	7/10/97	7/10/97	7/10/97
Instrument I.D.#:	GCHP21	GCHP21	GCHP21	GCHP21	GCHP21
Conc. Spiked:	10 µg/L	10 µg/L	10 µg/L	30 µg/L	60 µg/L
Result:	9.2	9.1	9.1	27	65
MS % Recovery:	92	91	91	90	108
Dup. Result:	9.5	9.3	9.4	28	67
MSD % Recov.:	95	93	94	93	112
RPD:	3.2	2.2	3.2	3.6	3.0
RPD Limit:	0-25	0-25	0-25	0-25	0-25

LCS #:	BLK071097	BLK071097	BLK071097	BLK071097	BLK071097
Prepared Date:	7/10/97	7/10/97	7/10/97	7/10/97	7/10/97
Analyzed Date:	7/10/97	7/10/97	7/10/97	7/10/97	7/10/97
Instrument I.D.#:	GCHP21	GCHP21	GCHP21	GCHP21	GCHP21
Conc. Spiked:	10 µg/L	10 µg/L	10 µg/L	30 µg/L	60 µg/L
LCS Result:	8.9	8.9	8.9	27	59
LCS % Recov.:	89	89	89	90	98

MS/MSD	60-140	60-140	60-140	60-140	60-140
LCS	70-130	70-130	70-130	70-130	70-130
Control Limits					

SEQUOIA ANALYTICAL

Peggy Penner
Project Manager

Please Note:

The LCS is a control sample of known, interferent-free matrix that is analyzed using the same reagents, preparation, and analytical methods employed for the samples. The matrix spike is an aliquot of sample fortified with known quantities of specific compounds and subjected to the entire analytical procedure. If the recovery of analytes from the matrix spike does not fall within specified control limits due to matrix interference, the LCS recovery is to be used to validate the batch.

** MS= Matrix Spike, MSD=MS Duplicate, RPD=Relative % Difference

9707068.BLA <2>





Blaine Tech Services, Inc.
1680 Rogers Avenue
San Jose, CA 95112
Attention: Fran Thie

Client Project ID: Chevron 9-0121 / 970630-T7
Matrix: Liquid

Work Order #: 9707068-01-03

Reported: Jul 17, 1997

QUALITY CONTROL DATA REPORT

Analyte: Diesel
QC Batch#: GC0707970HBPEXA
Analy. Method: EPA 8015M
Prep. Method: EPA 3510

Analyst: B. Sullivan
MS/MSD #: 970700905
Sample Conc.: 700
Prepared Date: 7/7/97
Analyzed Date: 7/8/97
Instrument I.D.#: GCHP4
Conc. Spiked: 1000 µg/L

Result: 1700
MS % Recovery: 100

Dup. Result: 1600
MSD % Recov.: 90

RPD: 6.1
RPD Limit: 0-50

LCS #: BLK070897
Prepared Date: 7/8/97
Analyzed Date: 7/9/97
Instrument I.D.#: GCHP4
Conc. Spiked: 1000 µg/L

LCS Result: 870
LCS % Recov.: 87

MS/MSD 50-150
LCS 60-140
Control Limits

Please Note:
The LCS is a control sample of known, interferent-free matrix that is analyzed using the same reagents, preparation, and analytical methods employed for the samples. The matrix spike is an aliquot of sample fortified with known quantities of specific compounds and subjected to the entire analytical procedure. If the recovery of analytes from the matrix spike does not fall within specified control limits due to matrix interference, the LCS recovery is to be used to validate the batch.

** MS=Matrix Spike, MSD=MS Duplicate, RPD=Relative % Difference

9707068.BLA <3>

SEQUOIA ANALYTICAL

Peggy Penner
Project Manager





Blaine Tech Services 1680 Rogers Avenue San Jose, CA 95112 Attention: Fran Thie	Client Proj. ID: Chevron 9-0121/970630-T7 Lab Proj. ID: 9707068	Received: 07/01/97 Reported: 07/14/97
--	--	--

LABORATORY NARRATIVE

In order to properly interpret this report, it must be reproduced in its entirety. This report contains a total of 11 pages including the laboratory narrative, sample results, quality control, and related documents as required (cover page, COC, raw data, etc.).

TPPH Note: Sample 9707068-01 was diluted 20-fold.
Sample 9707068-02 was diluted 10-fold.
Sample 9707068-03 was diluted 50-fold.

SEQUOIA ANALYTICAL

Peggy Renner
Project Manager



Field Data Sheets

CHEVRON WELL MONITORING DATA SHEET

Project #: 470030-T2 970630-T7	Station #: 9-0121
Sampler: MT	Date: 6/30
Well I.D.: MW1	Well Diameter: 2 3 ④ 6 8 * ____
Total Well Depth: 19.10	Depth to Water: 5.57
Depth to Free Product:	Thickness of Free Product (feet):
Referenced to: <u>PVC</u> Grade	D.O. Meter (if req'd): YSI HACH

Well Diameter	Multiplier	Well Diameter	Multiplier
2"	0.16	5"	1.02
3"	0.37	6"	1.47
4"	0.65	Other	radius ² * 0.163

Purge Method:	Sampling Method:
Bailer	Bailer
Disposable Bailer	Disposable Bailer*
Middleburg	Extraction Port
Electric Submersible*	Other: _____
Extraction Pump	
Other: _____	

<u>8.8</u>	x	<u>3</u>	=	<u>26.4</u>	Gals.
1 Case Volume (Gals.)		Specified Volumes		Calculated Volume	

Time	Temp (°F)	pH	Cond.	Gals. Removed	Observations
1901	70.1	7.4	1000	9	Odor
1903	71.0	7.2	1000	18	Odor
1905	70.8	7.1	1000	27	Odor

Did well dewater? Yes No Gallons actually evacuated: 27

Sampling Time: 1910 Sampling Date: 6/30

Sample I.D.: MW1 Laboratory: Sequoia GTEL N. Creek Assoc. Labs

Analyzed for: TPH-G BTEX MTBE TPH-D Other:

Duplicate I.D.: Analyzed for: TPH-G BTEX MTBE TPH-D Other:

D.O. (if req'd):	Pre-purge:	mg/L	Post-purge:	mg/L
------------------	------------	------	-------------	------

O.R.P. (if req'd):	Pre-purge:	mV	Post-purge:	mV
--------------------	------------	----	-------------	----

CHEVRON WELL MONITORING DATA SHEET

Project #: <u>970630-T-7</u>	Station #: <u>9.0121</u>
Sampler: <u>MT</u>	Date: <u>6/30</u>
Well I.D.: <u>MW2</u>	Well Diameter: 2 3 4 6 8 <u>3/4</u>
Total Well Depth:	Depth to Water: <u>4.32</u>
Depth to Free Product: <u>4.18</u>	Thickness of Free Product (feet): <u>.14</u>
Referenced to: <u>PVC</u> Grade	D.O. Meter (if req'd): YSI HACH

Well Diameter	Multiplier	Well Diameter	Multiplier
2"	0.16	5"	1.02
3"	0.37	6"	1.47
4"	0.65	Other	radius ² * 0.163

Purge Method:	Sampling Method:
Bailer	Bailer
Disposable Bailer	Disposable Bailer
Middleburg	Extraction Port
Electric Submersible	Other: <u>Pin Bailer</u>
Extraction Pump	
Other: <u>Pin Bailer</u>	

_____	X	_____	=	_____ Gals.
1 Case Volume (Gals.)		Specified Volumes		Calculated Volume

Time	Temp (°F)	pH	Cond.	Gals. Removed	Observations
					<u>Removed F.P. w/ Pin Bailer</u>
					<u>Removed 100 ml</u>

Did well dewater? Yes No Gallons actually evacuated:

Sampling Time: Sampling Date: 6/30

Sample I.D.: MW2 Laboratory: Sequoia GTEL N. Creek Assoc. Labs

Analyzed for: TPH-G BTEX MTBE TPH-D Other:

Duplicate I.D.: Analyzed for: TPH-G BTEX MTBE TPH-D Other:

D.O. (if req'd):	Pre-purge:	mg/L	Post-purge:	mg/L
------------------	------------	------	-------------	------

O.R.P. (if req'd):	Pre-purge:	mV	Post-purge:	mV
--------------------	------------	----	-------------	----

CHEVRON WELL MONITORING DATA SHEET

Project #: <u>970030-T7</u>	Station #: <u>9-0121</u>
Sampler: <u>MT</u>	Date: <u>6/30</u>
Well I.D.: <u>MW3</u>	Well Diameter: 2 3 4 6 8 <u>3/4</u>
Total Well Depth: <u>17.22</u>	Depth to Water: <u>8.71</u>
Depth to Free Product:	Thickness of Free Product (feet):
Referenced to: <u>PVC</u> Grade	D.O. Meter (if req'd): YSI HACH

Well Diameter	Multiplier	Well Diameter	Multiplier
2"	0.16	5"	1.02
3"	0.37	6"	1.47
4"	0.65	Other	radius ² * 0.163

.02

Purge Method: Bailer	Sampling Method: Bailer
Disposable Bailer	Disposable Bailer
Middleburg	Extraction Port
Electric Submersible	Other: <u>Pin Bailer</u>
Extraction Pump	
Other: <u>Pin Bailer</u>	

<u>.2</u>	x	_____	=	<u>.4</u>	Gals.
1 Case Volume (Gals.)		Specified Volumes		Calculated Volume	

Time	Temp (°F)	pH	Cond.	Gals. Removed	Observations
<u>18:22</u>	<u>69.6</u>	<u>7.3</u>	<u>1400</u>	<u>.2</u>	<u>odor</u>
<u>18:29</u>	<u>71.3</u>	<u>7.3</u>	<u>1300</u>	<u>.4</u>	<u>odor</u>
<u>18:36</u>	<u>70.6</u>	<u>7.2</u>	<u>1200</u>	<u>.6</u>	<u>odor</u>

Did well dewater? Yes Gallons actually evacuated: 1.6

Sampling Time: 18:49 Sampling Date: 6/30

Sample I.D.: MW3 Laboratory: Sequoia GTEL N. Creek Assoc. Labs

Analyzed for: TPH-G BTEX MTBE TPH-D Other:

Duplicate I.D.: Analyzed for: TPH-G BTEX MTBE TPH-D Other:

D.O. (if req'd):	Pre-purge:	mg/L	Post-purge:	mg/L
O.R.P. (if req'd):	Pre-purge:	mV	Post-purge:	mV

CHEVRON WELL MONITORING DATA SHEET

Project #: <u>970030-T1</u>	Station #: <u>9-0121</u>
Sampler: <u>NT</u>	Date: <u>6/30</u>
Well I.D.: <u>MWA</u>	Well Diameter: 2 3 4 6 8 <u>3/4</u>
Total Well Depth: <u>15.20</u>	Depth to Water: <u>6.03</u>
Depth to Free Product:	Thickness of Free Product (feet):
Referenced to: <u>PVC</u> Grade	D.O. Meter (if req'd): YSI HACH

Well Diameter	Multiplier	Well Diameter	Multiplier
2"	0.16	5"	1.02
3"	0.37	6"	1.47
4"	0.65	Other	radius ² * 0.163

Purge Method: Bailer Disposable Bailer Middleburg Electric Submersible Extraction Pump Other: <u>Pin Bailer</u>	Sampling Method: Bailer Disposable Bailer Extraction Port Other: <u>Pin Bailer</u>
--	---

<u>12</u>	\times	<u>3</u>	$=$	<u>.6</u>	Gals.
1 Case Volume (Gals.)		Specified Volumes		Calculated Volume	

Time	Temp (°F)	pH	Cond.	Gals. Removed	Observations
<u>19:10</u>	<u>70.1</u>	<u>7.9</u>	<u>1100</u>	<u>.2</u>	<u>Odor</u>
<u>19:22</u>	<u>71.0</u>	<u>7.8</u>	<u>1200</u>	<u>.4</u>	<u>Odor</u>
<u>19:28</u>	<u>70.9</u>	<u>7.6</u>	<u>1200</u>	<u>.6</u>	<u>Odor</u>

Did well dewater? Yes <u>No</u>	Gallons actually evacuated: <u>.6</u>
Sampling Time: <u>1930</u>	Sampling Date: <u>6/30</u>
Sample I.D.: <u>MWA</u>	Laboratory: <u>Sequoia</u> GTEL N. Creek Assoc. Labs
Analyzed for: <u>TPH-G BTEX MTBE TPH-D</u> Other:	
Duplicate I.D.:	Analyzed for: TPH-G BTEX MTBE TPH-D Other:
D.O. (if req'd):	Pre-purge: <u>mg/L</u> Post-purge: <u>mg/L</u>
O.R.P. (if req'd):	Pre-purge: <u>mV</u> Post-purge: <u>mV</u>