

**WESTERN  
GEO-ENGINEERS**

**CALIF CONTRACTOR # 513857 A CORPORATION  
REGISTERED GEOLOGISTS**

**1386 EAST BEAVER STREET  
WOODLAND, CA 95776-0003  
FAX (916) 662-0273  
(916) 668-5300**

From: George Converse

Date: April 15, 1994

To: Eva Chee

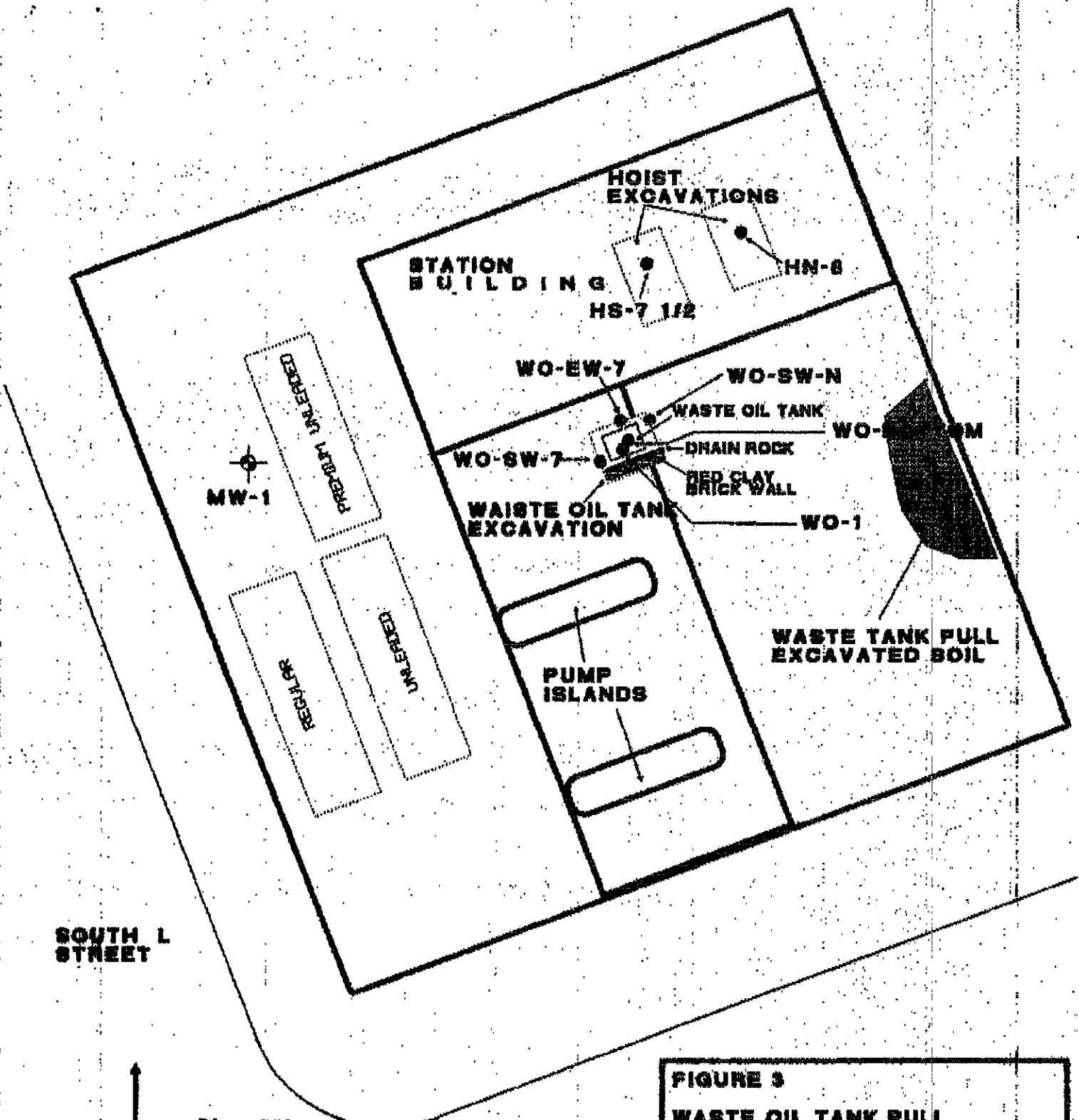
FAX#: (510) 569-4757

Alameda Co Health  
(510) 271-4530  
\_\_\_\_\_  
\_\_\_\_\_  
\_\_\_\_\_

Total Pages  
Including This Page

5

Lab Results w/ Sample Location  
Figures for Desert Petroleum # 795  
2008 First Street  
Livermore, CA 94550

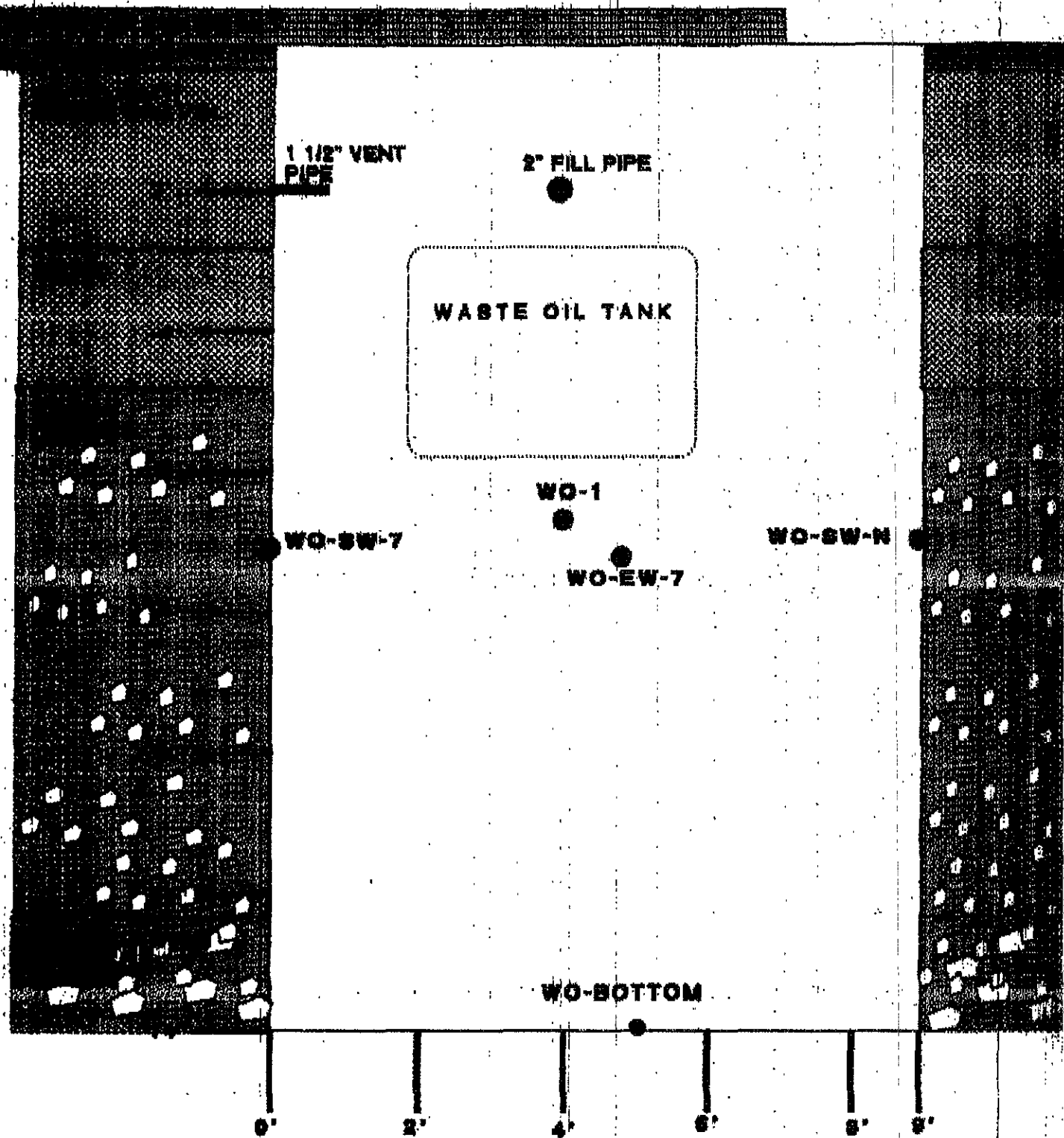


**SOUTH L STREET**

**FIRST STREET**



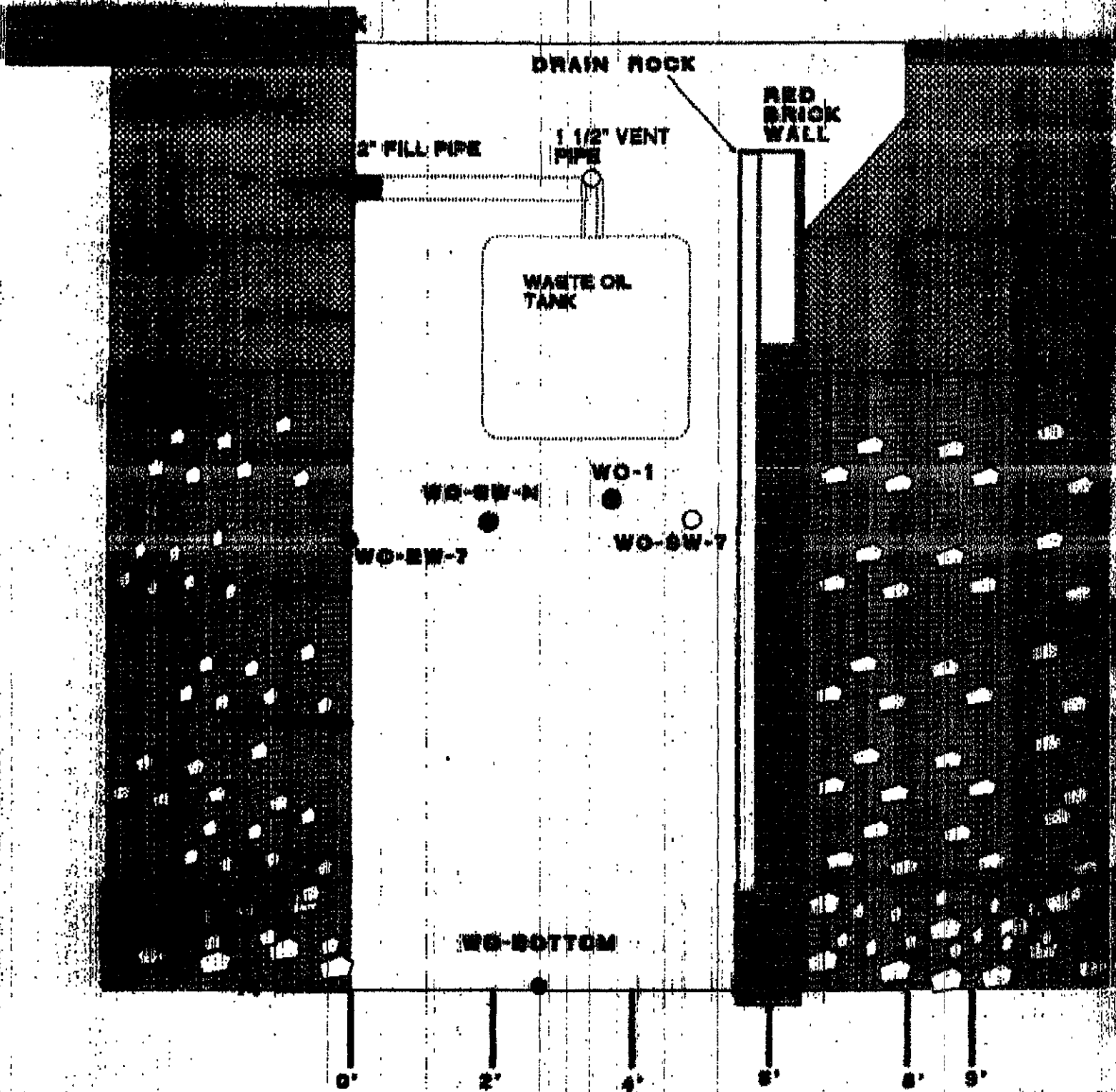
**FIGURE 3**  
**WASTE OIL TANK PULL SAMPLING, MARCH 19, 1994.**  
**DESERT PETROLEUM #796**  
**2008 FIRST STREET,**  
**LIVERMORE, CA 94560**  
**WESTERN GEO-ENGINEERS**



**FIGURE 4**  
**CROSS SECTION OF WASTE OIL**  
**EXCAVATION LOOKING**  
**NORTHWEST, WITH SAMPLE**  
**LOCATIONS AND LITHOLOGY,**  
**MARCH 16, 1994.**

**DESERT PETROLEUM #796**  
**LIVERMORE, CA.**

**WESTERN GEO-ENGINEERS**



**FIGURE 6**  
**CROSS SECTION OF WASTE OIL**  
**EXCAVATION LOOKING**  
**NORTHEAST, WITH SAMPLE**  
**LOCATIONS AND LITHOLOGY,**  
**MARCH 18, 1984.**

**DESERT PETROLEUM #785**  
**LIVERMORE, CA.**

**WESTERN GEO-ENGINEERS**