



ENVIRONMENTAL HEALTH SERVICES  
ENVIRONMENTAL PROTECTION  
1131 Harbor Bay Parkway, Suite 250  
Alameda, CA 94502-6577  
(510) 567-6700  
FAX (510) 337-9335

**May 22, 2013**

**NOTIFICATION OF POTENTIAL CASE  
CLOSURE  
Chevron # 9-2960**

**Site Location: 2416 Grove Way, Castro  
Valley, CA 94546  
Fuel Leak Case RO0000275  
and GeoTracker Global ID T0600100318**

**Summary** – This fact sheet has been prepared to inform community members and other interested parties of potential case closure for a fuel leak case located at 2416 Grove Way in Castro Valley, CA. The property is currently occupied by the paved parking lot of a grocery store and a portion of northbound Redwood Road and westbound Grove Way. Based on data and reports submitted by the property owner it does not appear that the petroleum release presents a risk to human health or the environment.

**Background** – Known use of the site dates back to at least 1965, when the property was occupied by a Chevron fuel service station. The former Chevron station is reported to have been demolished in 1986 along with all associated aboveground and underground structures, including four underground storage tanks (USTs) and two dispenser islands.

Contamination from the USTs at the site was first indicated by soil samples collected upon removal of the USTs, and in groundwater monitoring wells installed at the site with detections of Total Petroleum Hydrocarbons as gasoline, benzene, and ethylbenzene. Cleanup of soil and groundwater contamination has included product bailing,

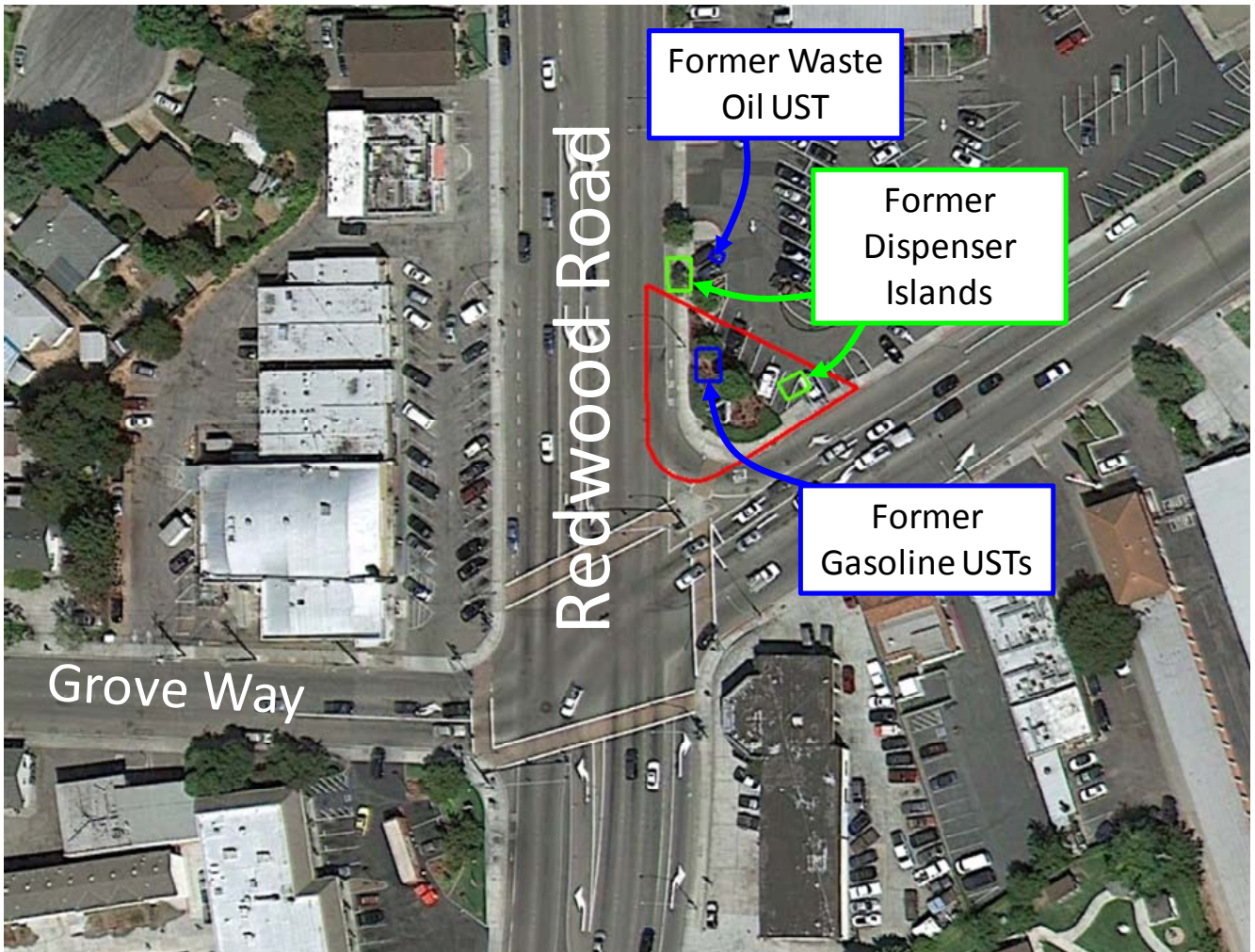
skimming, groundwater extraction, and Soil Vapor Extraction. Approximately 1,200,000 gallons of groundwater was extracted from the site, treated, and disposed of, and remediation removed an estimated 9,000 pounds of hydrocarbons from groundwater at the site.

Recent groundwater data indicate that the plume containing dissolved petroleum hydrocarbons appears to be stable and delineated. The plume and residual petroleum hydrocarbons in soil are expected to biodegrade over time.

This fuel leak case has been evaluated for closure consistent with the criteria in the State Water Resource Control Board's Low Threat Closure Policy (LTCP). Sites that meet the general and media-specific criteria in the LTCP are considered to not pose a threat to human health, safety, or the environment and are appropriate for closure pursuant to Health and Safety Code section 25296.10. Residual petroleum hydrocarbons that are present in soil or groundwater are expected to biodegrade over time.

**Next Step** – The public is invited to review and comment on the potential closure of the fuel leak case. The entire case file can be viewed over the Internet on the ACEH website (<http://www.acgov.org/aceh/lop/ust.htm>) or the State of California Water Resources Control Board GeoTracker website (<http://geotracker.swrcb.ca.gov>). Please send written comments to Mark Detterman at the address below; all comments will be forwarded to the responsible parties. **Comments received by July 22, 2013** will be considered and responded to prior to a final determination on the proposed case closure.

Additional information: Contact Mark Detterman of the Alameda County Department of Environmental Health, 1131 Harbor Bay Parkway, Alameda, CA 94502 at 510-567-6876 or by email at [mark.detterman@acgov.org](mailto:mark.detterman@acgov.org)



Aerial View of Property (Google Earth, 2013)