



Chevron U.S.A. Inc.

2410 Camino Ramon, San Ramon, California • Phone (415) 842-9500
Mail Address: P.O. Box 5004, San Ramon, CA 94583-0804

Marketing Operations

April 18, 1990

D. Moller
Manager, Operations
S. L. Patterson
Area Manager, Operations
C. G. Trimbach
Manager, Engineering

Mr. Rafat Shahid
Alameda County
Environmental Health
80 Swan Way, Room 200
Oakland, California 94621

Re: Chevron Service Station #9-0329
340 Highland Avenue
Piedmont, CA

Dear Mr. Shahid:

Enclosed we are forwarding a Work Plan prepared by our consultant GeoStrategies, Inc., which describes additional work steps we propose to take at the above referenced site. We would appreciate your review and concurrence. Chevron will proceed under self direction unless otherwise informed by your office.

I declare under penalty of perjury that the information contained in the attached report is true and correct, and that any recommended actions are appropriate under the circumstances, to the best of my knowledge.

If you have any questions or comments please do not hesitate to call me at (415) 842 - 9625.

Very truly yours,

C. G. Trimbach

JMR/jmr
Enclosure

By 
John Randall

cc: Mr. Lester Feldman
RWQCB-Bay Area
1800 Harrison Street
Suite # 700
Oakland, CA 94612

Jerry Mitchell
GeoStrategies

w/o enclosure

91 APR 20 PM 4:08



GeoStrategies Inc.

WORK PLAN

Chevron Service Station #0329
340 Highland Avenue
Piedmont, California

Report No. 7261-1

April 17, 1990



GeoStrategies Inc.
2140 WEST WINTON AVENUE
HAYWARD, CALIFORNIA 94545

RECEIVED

APR 17 1990

(415) 352-4800

GETTLER-RYAN INC.
GENERAL CONTRACTORS

April 17, 1990

Gettler-Ryan Inc.
2150 West Winton Avenue
Hayward, California 94545

Attn: Mr. Jerry Mitchell

Re: WORK PLAN
Chevron Service Station #0329
340 Highland Avenue
Piedmont, California

Gentlemen:

This work plan has been prepared to further evaluate the extent of petroleum hydrocarbons in the soil and groundwater at the above referenced location (Plate 1).

SITE BACKGROUND

In January 1983, Gettler-Ryan Inc. (G-R) installed four ground-water monitoring wells at the site designated C-1 through C-4 (Plate 2). Separate-phase hydrocarbons were observed in monitoring well C-2. In addition to the four monitoring wells, two tank backfill monitoring wells exist at the site.

In August 1989, G-R conducted ground-water sampling at the site. Monitoring wells C-1 and C-4 were reported dry and a [redacted] was observed on Wells [redacted]. Results were presented in a G-R ground-water sampling report dated [redacted] 1989.

In November 1989, G-R collected ground-water samples at the site. Chemical analyses detected [redacted] hydrocarbons in ground-water monitoring wells C-1 and C-2. Tank backfill monitoring well A-1 Monitoring well C-3 was reported as near detected for Total Petroleum Hydrocarbons calculated as Gasoline (TPH-Gasoline). Monitoring well [redacted] was reported dry at 1.5 feet below the ground surface. A summary of the chemical analytical data is presented on Table 1.

GeoStrategies Inc.

Gettler-Ryan Inc.
April 17, 1990
Page 2

TECHNICAL APPROACH

The project site is located in the east bay highlands which are bordered by the Berkeley Hills toward the east and the San Francisco Bay toward the west. The site is underlain by the Franciscan Formation which locally consists of fine to coarse grain sand which grades into weathered sandstone and sandstone. Groundwater occurs within the upper sand unit approximately 2 to 5 feet below grade. Potentiometric data collected prior to ground-water sampling on November 15, 1989, indicate an approximate hydraulic gradient of 0.05 which flows toward the west southwest beneath the site (Plate 3). A summary of the potentiometric data is presented on Table 1.

GeoStrategies Inc. (GSI) has reviewed the available ground-water data and boring logs for the site. Based on this review, we recommend that 3 additional ground-water monitoring wells be installed at the locations shown on Plate 2. If field observations confirm a contaminant presence at the location proposed southwest of Well C-2, then a fourth well will be installed adjacent to the park at the south side of Highland Avenue. These wells will be used to further delineate the extent of the dissolved hydrocarbon plume.

Scope of Work

The following scope of work will be performed according to the GSI Field Methods and Procedures presented in Appendix A. These procedures are in accordance with the current State of California Department of Water Resources regulations for conducting environmental investigations related to leaking underground storage tanks.

TASK 1. The proposed monitoring wells will be installed using a truck mounted hollow-stem auger drilling rig. The wells will be constructed using 2-inch diameter Schedule 40 PVC well casing and factory slotted well screen. The well screens will extend above the equilibrated water level to account for potential diurnal and seasonal fluctuations in water levels and separate-phase hydrocarbons, if present. The annular sandpack will extend a minimum of 2 feet above the top of the screen and a minimum 1 foot bentonite seal will be placed on top of the sandpack followed by a cement grout.

GeoStrategies Inc.

Gettler-Ryan Inc.

April 17, 1990

Page 3

Soil samples will be collected at five-foot intervals as a minimum for lithologic description, field screening for the presence of organic vapor, and chemical analysis. Selected soil samples will be analyzed for ~~Polynuclear Aromatic Hydrocarbons, Benzene, Toluene, Ethylbenzene and Xylenes~~ (BTEX). Selection of samples for chemical analysis will be based on visual observation of contaminants, presence of organic vapor from field screening, and lithology.

TASK 2. All newly installed wells will be properly developed and ground-water samples will be collected and analyzed from all wells for TPH-Gasoline and BTEX according to the G-R ground-water sampling protocol presented in Appendix A. In addition, monitoring well C-1 will be cleaned out and redeveloped.

TASK 3. A report documenting the results of this investigation will be prepared. This report will include a potentiometric map, chemical isoconcentration maps, and a summary of the available ground-water analytical data.

Based on the results of this investigation, an evaluation of the applicability of ground-water remediation will be made. Information provided to GSI by Chevron indicate station demolition tentatively scheduled for the fall of 1990. During tank removal, the extent of contaminated soil (if present) will be evaluated.

GeoStrategies Inc.

Gettler-Ryan Inc.
April 17, 1990
Page 4

If you have any questions, please call.

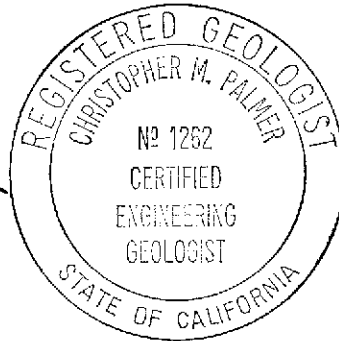
GeoStrategies Inc. by,

Randall Young

Randall S. Young
Geologist

Christopher M. Palmer

Christopher M. Palmer
Senior Geologist
C.E.G. 1262, R.E.A. 285



RSY/CMP/kjj

- | | |
|----------|---------------------------------|
| Plate 1. | Vicinity Map |
| Plate 2. | Site Plan |
| Plate 3. | Potentiometric and Chemical Map |

Appendix A: GSI Field Methods and Procedures

TABLE 1

GROUND-WATER ANALYSES DATA

WELL NO	SAMPLE DATE	ANALYZED DATE	TPH-G (PPB)	BENZENE (PPB)	TOLUENE (PPB)	ETHYLBENZENE (PPB)	XYLENES (PPB)	TOG (PPB)	WELL ELEV (FT)	STATIC WATER ELEV (FT)	PRODUCT THICKNESS (FT)	DEPTH TO WATER (FT)
	15-Nov-89	22-Nov-89	5100	500	36	420	180	<5000	94.19	91.39	----	
C-3	15-Nov-89	22-Nov-89	<500	<0.5	2.8	<0.5	1.1	<5000	97.65	92.48	----	2.17
C-4	15-Nov-89	22-Nov-89	1300	2.9	310	0.5	2.9	<5000	95.60	90.65	----	4.95
A	15-Nov-89	22-Nov-89		98	2.1	4.3	55	<5000	----	----	----	2.04
TB	15-Nov-89	22-Nov-89	<500	<0.5	<0.5	<0.5	<0.5	<0.5	----	----	----	----

CURRENT REGIONAL WATER QUALITY CONTROL BOARD MAXIMUM CONTAMINANT LEVELS

Benzene 1.0 ppb Xylenes 1,750 ppb Ethylbenzene 680 ppb

CURRENT DHS ACTION LEVELS

Toluene 100 ppb

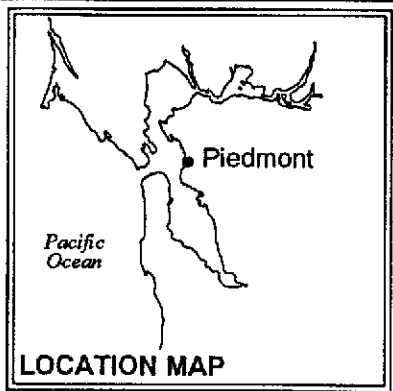
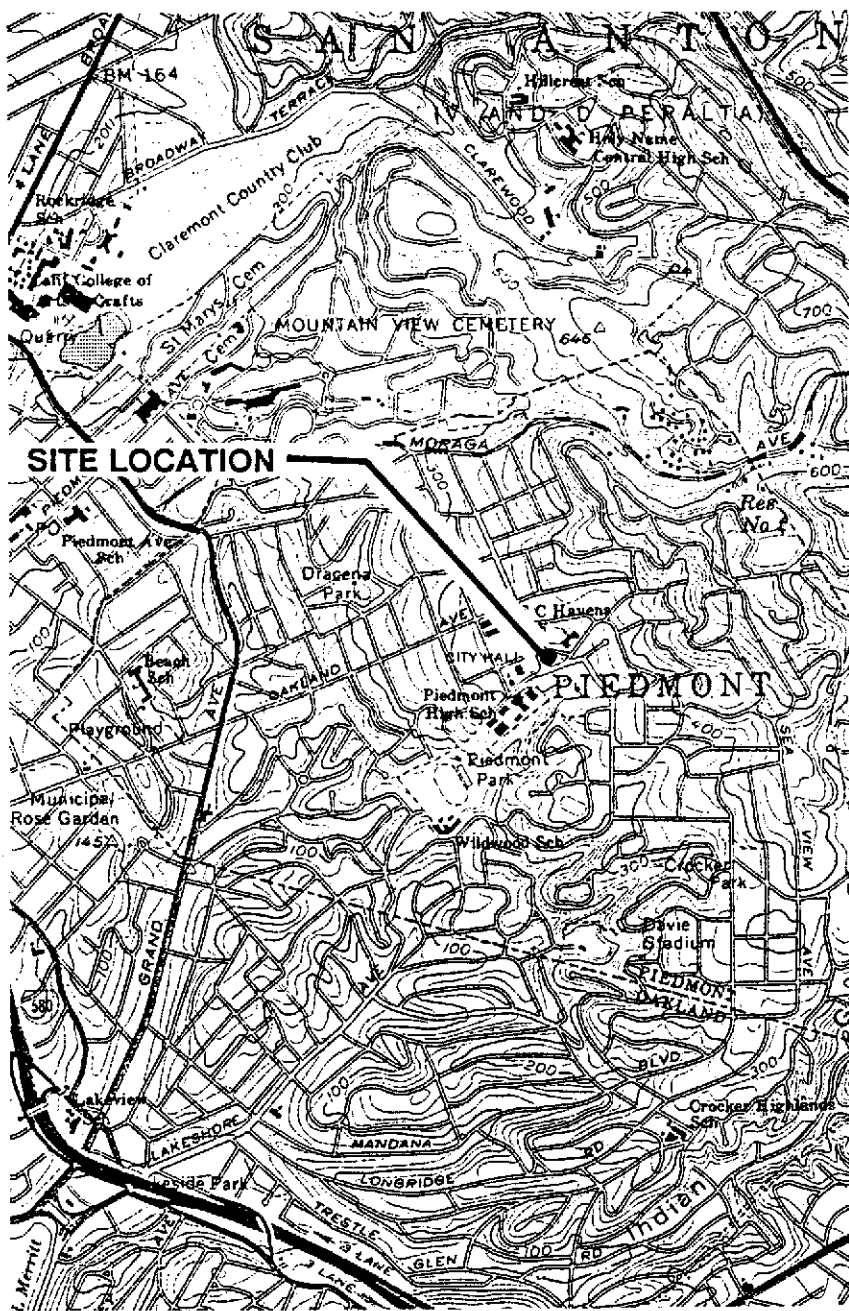
TPH = Total Petroleum Hydrocarbons as Gasoline

TOG = Total Oil & Grease

PPB = Parts Per Billion

TB = Trip Blank

- Note: 1. All data shown as <x are reported as ND (none detected)
 2. Static Water elevations referenced to project datum
 3. DHS Action Levels and MCLs are subject to change pending State review



SITE LOCATION

PIEDMONT



Base Map: USGS Topographic Map

Approximate Scale : 1" = 2000'



GeoStrategies Inc.

Vicinity Map
Chevron Service Station #0329
340 Highland Avenue
Piedmont, California

PLATE

1

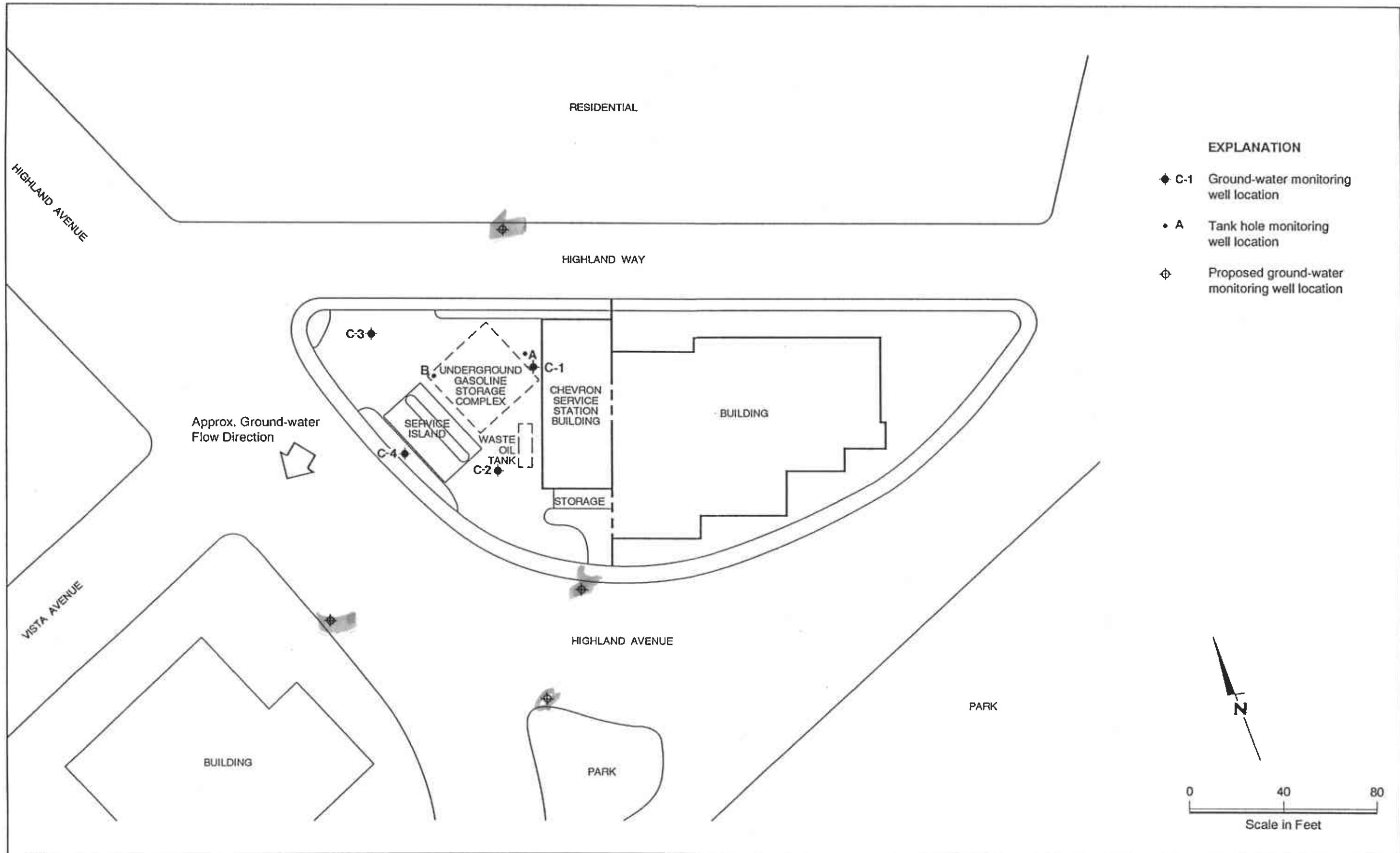
JOB NUMBER
7261

REVIEWED BY RG/CEG

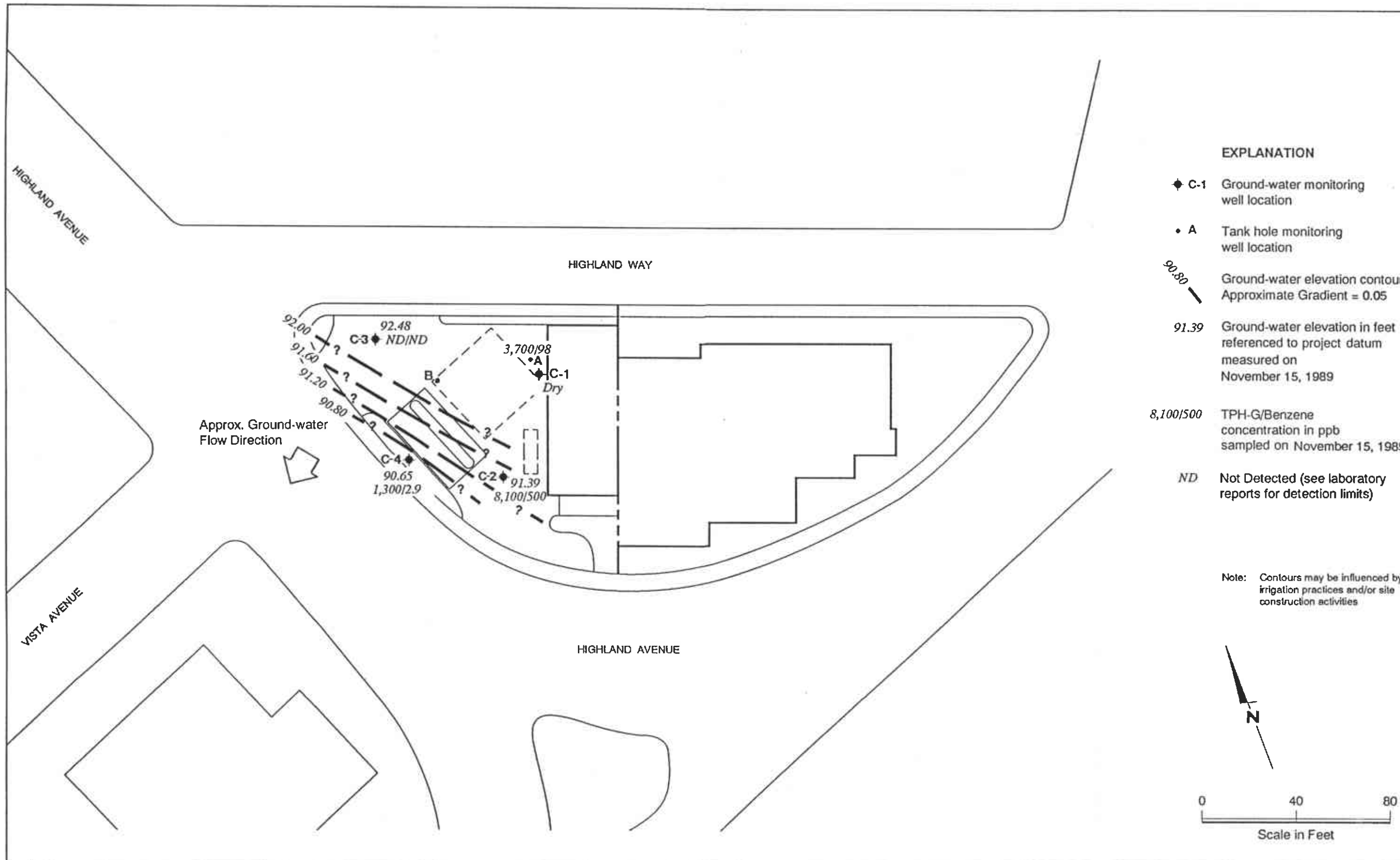
DATE
2/90

REVISED DATE

REVISED DATE

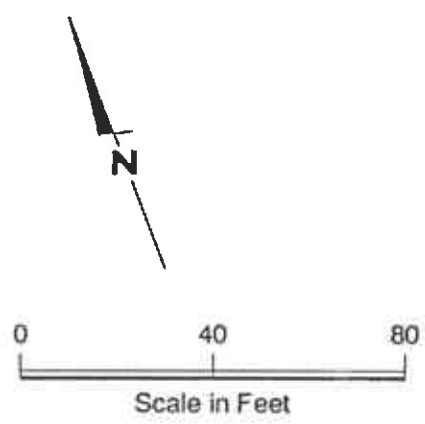


- EXPLANATION**
- ◆ C-1 Ground-water monitoring well location
 - A Tank hole monitoring well location
 - ⊕ Proposed ground-water monitoring well location



- EXPLANATION**
- ◆ C-1 Ground-water monitoring well location
 - A Tank hole monitoring well location
 - 90.80 Ground-water elevation contour
Approximate Gradient = 0.05
 - 91.39 Ground-water elevation in feet
referenced to project datum
measured on
November 15, 1989
 - 8,100/500 TPH-G/Benzene
concentration in ppb
sampled on November 15, 1989
 - ND Not Detected (see laboratory
reports for detection limits)

Note: Contours may be influenced by irrigation practices and/or site construction activities



GeoStrategies Inc.

**APPENDIX A
GSI FIELD METHODS AND PROCEDURES**

FIELD METHODS AND PROCEDURES

EXPLORATION DRILLING

Mobilization

Prior to any drilling activities, GSI will verify that necessary drilling permits have been secured.

Utility locations will be located and drilling will be conducted so as not to disrupt activities at a project site. GSI will obtain and review available public data on subsurface geology and if warranted, the location of wells within a half-mile of the project site will be identified. Drillers will be notified in advance so that drilling equipment can be inspected prior to performing work.

Drilling

The subsurface investigations are typically performed to assess the lateral and vertical extent of petroleum hydrocarbons present in soils and ground water. Drilling methods will be selected to optimize field data requirements as well as be compatible with known or suspected subsurface geologic conditions.

Monitoring wells are installed using a truck-mounted hollow-stem auger drill rig or mud-rotary drill rig. Typically, the hollow-stem rig is used for wells up to 100 feet, if subsurface conditions are favorable. Wells greater than 100-feet deep are typically drilled using mud-rotary techniques. When mud rotary drilling is used, an electric log will be performed for additional lithological information. Also during mud rotary drilling, precautions will be taken to prevent mud from circulating contaminants by using a conductor casing to seal off contaminated zones. Samples will be collected for lithologic logging by continuous chip, and where needed by drive sample or core as specified by the supervising geologist.

Soil Sampling

Shallow soil borings will be drilled using a truck-mounted hollow-stem auger drilling rig, unless site conditions favor a different drilling method. Drilling and sampling methods will be consistent with ASTM Method D-1452-80. The auger size will be a minimum 6-inch nominal outside-diameter (O.D). No drilling fluids will be used during this drilling method. The augers and other tools used in the bore hole will be steam cleaned before use and between borings to minimize the possibilities of cross-contamination between borings.

Soil samples are typically collected at 5-foot intervals as a minimum from ground surface to total depth of boring. Additional soil samples will be collected based on significant lithologic changes and/or potential chemical content. Soil samples from each sampling interval will be lithologically described by a GSI geologist (Figure 1). Soil colors will be described using the Munsell Color Chart. Rock units will be logged using appropriate lithologic terms, and colors described by the G.S.A. Rock Color Chart.

Head-space analyses will be performed to check for the evidence of volatile organic compounds. Head-space analyses will be performed using an organic vapor analyzer; either an OVA, HNU, or OVM. Organic vapor concentrations will be recorded on the GSI field log of boring (Figure 1). The selection of soil samples for chemical analysis are typically based on the following criteria:

- 1) Soil discoloration
- 2) Soil odors
- 3) Visual confirmation of chemical in soil
- 4) Depth with respect to underground tanks (or existing grade)
- 5) Depth with respect to ground water
- 6) OVA reading

Soil samples (full brass liners) selected for chemical analysis are immediately covered with aluminum foil and the liner ends are capped to prevent volatilization. The samples are labeled and entered onto a Chain-of-Custody form, and placed in a cooler on blue ice for transport to a State-certified analytical laboratory.

Soil cuttings are stockpiled on-site. Soils are sampled and analyzed for site-specific chemical parameters. Disposition of soils is dependent of chemical analytical results of the samples.

Soil Sampling - cont.

Soil borings not converted to monitoring wells will be backfilled (sealed) to ground surface using either a neat cement or cement-bentonite grout mixture. Backfilling will be tremied by continuously pumping grout from the bottom to the top of the boring where depth exceeds 20' or as required by local permit requirements.

All field and office work, including exploratory boring logs, are prepared under the direction of a registered geologist.

Monitoring Well Installation

Monitoring well casing and screen will be constructed of Schedule 40, flush-joint threaded polyvinylchloride (PVC). The well screen will be factory mill-slotted unless additional open area is required (eg. conversion to an extraction well in a low-yield aquifer). The screen length will be placed adjacent to the aquifer material to a minimum of 2-feet above encountered water. No screen shall be placed in a borehole that potentially creates hydraulic interconnection of two or more aquifer units. Screen slot size and well sand pack will be compatible with encountered aquifer materials, as confirmed by sieve analysis.

Monitoring wells will be completed below grade (Figure 2) unless special conditions exist that require above-grade completion design. In the event a monitoring well is required in an aquifer unit beneath an existing aquifer, the upper aquifer will be sealed off by installing a steel conductor casing with an annular neat cement or cement-bentonite grout seal. This seal will be continuously tremied pumped from the bottom of the annulus to ground surface.

The monitoring well sand pack will be placed adjacent to the entire screened interval and will extend a recommended minimum distance of 2-feet above the top of the screen. No sand pack will be placed that interconnects two or more aquifer units. A minimum 2-foot bentonite pellet or bentonite slurry seal will be placed above the sand pack. Sand pack, bentonite, and cement seal levels will be confirmed by sounding the annulus with a calibrated weighted tape. The remaining annular space above the bentonite seal will be grouted with a bentonite-cement mixture and will be tremie-pumped from the bottom of the annular space to the ground surface. The bentonite content of the grout will not exceed 5 percent by weight. A field log of boring and a field well completion form will be prepared by GSI for each well installed.

Decontamination of drilling equipment before drilling and between wells will consist of steam cleaning, and/or Alconox wash.

Well Development

Monitoring wells will be developed using a submersible pump, bladder pump or bailer. All well developing equipment will be decontaminated prior to development using a steam cleaner and/or Alconox detergent wash. Wells will be developed until discharge water is visibly clear and free of sediment. The adequacy of well development will be assessed by the GSI geologist. Indicator parameters (pH, specific conductance, and temperature) will be monitored and recorded during well development. Field instrument calibrations will be performed according to manufacturer's specifications.

Well Surveying

Monitoring wells will be surveyed to obtain top of box elevations to the nearest ± 0.01 foot. Water level measurements will be recorded to the nearest ± 0.01 foot and referenced to mean sea level (MSL). If additional wells are required, then existing and newly installed wells are surveyed relative to MSL.

GROUND-WATER SAMPLING AND ANALYSISQuality Assurance/Quality Control Objectives

The sampling and analysis procedures employed by Gettler-Ryan Inc. (G-R) for ground-water sampling and monitoring follow specific Quality Assurance/Quality Control (QA/QC) guidelines. Quality Assurance objectives have been established by G-R to develop and implement procedures for obtaining and evaluating water quality and field data in an accurate, precise, and complete manner so that sampling procedures and field measurements provide information that is comparable and representative of actual field conditions. Quality Control (QC) is maintained by G-R by using specific field protocols and requiring the analytical laboratory to perform internal and external QC checks. It is the goal of G-R to provide data that are accurate, precise, complete, comparable, and representative. The definitions for accuracy, precision, completeness, comparability, and representativeness are as follows:

- Accuracy - the degree of agreement of a measurement with an accepted referenced or true value.
- Precision - a measure of agreement among individual measurements under similar conditions. Usually expressed in terms of the standard deviation.
- Completeness - the amount of valid data obtained from a measurement system compared to the amount that was expected to meet the project data goals.
- Comparability - expresses the confidence with which one data set can be compared to another.
- Representativeness - a sample or group of samples that reflects the characteristics of the media at the sampling point. It also includes how well the sampling point represents the actual parameter variations which are under study.

As part of the G-R QA/QC program, applicable federal, state, and local reference guidance documents are followed. The procedures outlined in these regulations, manuals, handbooks, guidance documents, and journals are incorporated into the G-R sampling procedures to assure that; (1) ground-water samples are properly collected, (2) ground-water samples are identified, preserved, and transported in a manner such that they are representative of field conditions, and (3) chemical analysis of samples are accurate and reproducible.

Guidance and Reference Documents Used to Collect Groundwater Samples

These documents are used to verify Gettler-Ryan Inc. sampling procedures and consistent with current regulatory guidance. If site specific work and sampling plans are required, those plans will be developed from these documents.

U.S.E.P.A. - 330/9-51-002	NEIC Manual for Groundwater/Subsurface Investigation at Hazardous Waste Sites
U.S.E.P.A. - 530/SW611	Procedures Manual for Groundwater Monitoring at Solid Waste Disposal Facilities (August, 1977)
U.S.E.P.A. - 600/4-79-020	Methods for Chemical Analysis of Water and Wastes (1983)
U.S.E.P.A. - 600/4-82-029	Handbook for Sampling and Sample Preservation of Water and Wastewater (1982)
U.S.E.P.A. - 600/4-82-057	Test Methods for Organic Chemical Analysis of Municipal and Industrial Wastewater (July, 1982)
U.S.E.P.A. - SW-846#, 3rd Edition	Test Methods for Evaluating Solid Waste - Physical/Chemical Methods (November, 1986)
40 CFR 136.3e, Table II (Code of Federal Regulations)	Required Containers, Preservation Techniques, and Holding Times
Resources Conservation and Recover Act (OSWER 9950.1)	Groundwater Monitoring Technical Enforcement Guidance Document (September, 1986)
California Regional Water Quality Control Board (Central Valley Region)	A Compilation of Water Quality Goals (September, 1988); Updates (October, 1988)
California Regional Water Quality Control Board (North Coast, San Francisco Bay, and Central Valley)	Regional Board Staff Recommendations for Initial Evaluations and Investigation of Underground Tanks: Tri-Regional Recommendations (June, 1988)

Guidance and Reference Documents Used to Collect Groundwater Samples (cont.)

Regional Water Quality Control Board (Central Valley Region)	Memorandum: Disposal, Treatment, and Refuse of Soils Contaminated with Petroleum Fractions (August, 1986)
State of California Department of Health Services	Hazardous Waste Testing Laboratory Certification List (March, 1987)
State of California Water Resources Control Board	Leaking Underground Fuel Tank (LUFT) Field Manual (May, 1988), and LUFT Field Manual Revision (April, 1989)
State of California Water Resources Control Board	Title 23, (Register #85.#33-8-17-85), Subchapter 16: Underground Tank Regulations; Article 3, Sections 2632 and 2634; Article 4, Section 2647 (October, 1986)
Alameda County Water District	Groundwater Protection Program: Guidelines for Groundwater and Soil Investigations at Leaking Underground Fuel Tank Sites (November, 1988)
American Public Health Association	Standard Methods for the Examination of Water and Wastewaters, 16th Edition
Analytical Chemistry (journal)	Principles of Environmental Analysis, Volume 55, Pages 2212-2218 (December, 1983)
Santa Clara Valley Water District	Guidelines for Preparing or Reviewing Sampling Plans for Soil and Groundwater Investigation of Fuel Contamination Sites (January, 1989)
Santa Clara Valley Water District	Investigation and Remediation at Fuel Leak sites: Guidelines for Investigation and Technical Report Preparation (March 1989)
American Petroleum Institute	Groundwater Monitoring & Sample Bias; API Publication 4367, Environmental Affairs Department, June 1983
Site Specific (as needed)	General and specific regulatory documents as required.

Because ground-water samples collected by G-R are analyzed to the parts per billion (ppb) range for many compounds, extreme care is exercised to prevent contamination of samples. When volatile or semi-volatile organic compounds are included for analysis, G-R sampling crew members will adhere to the following precautions in the field:

1. A clean pair of new, disposable gloves are worn for each well being sampled.
2. When possible, samples are collected from known or suspected wells that are least contaminated (i.e. background) followed by wells in increasing order of contamination.

When known or potential organic compounds are being sampled for, the following additional precautions are taken:

1. All sample bottles and equipment are kept away from fuels and solvents. When possible, gasoline (used in generators) is stored away from bailers, sample bottles, purging pumps, etc.
2. Bailers are made of Teflon or Stainless Steel. Other materials such as plastic may contaminate samples with phthalate esters which interfere with many Gas Chromatography (GC) analyses.
3. Volatile organic ground-water samples are collected so that air passage through the sample does not occur or is minimal (to prevent volatiles from being stripped from the samples): sample bottles are filled by slowly running the sample down the side of the bottle until there is a positive convex meniscus over the neck of the bottle; the Teflon side of the septum (in cap) is positioned against the meniscus, and the cap screwed on tightly; the sample is inverted and the bottle lightly tapped. The absence of an air bubble indicates a successful seal; if a bubble is evident, the cap is removed, more sample is added, and the bottle is resealed.
4. Extra Teflon seals are brought into the field in case seals are difficult to handle and/or are dropped. Dropped seals are considered contaminated and are not used. When replacing seals or if seals become flipped, care is taken to assure that the Teflon seal faces down.

Sample analysis methods, containers, preservatives and holding times are shown on Table 1.

Laboratory and field handling procedures of samples are monitored by including QC samples for analysis with every submitted sample lot from a project site. QC samples may include any combination of the following:

- A. Trip Blank: Used for purgeable organic compounds only; QC samples are collected in 40 milliliter (ml) samples vials filled in the analytical laboratory with organic-free water. Trip blanks are sent to the project site, and travel with project site samples. Trip blanks are not opened, and are returned from a project site with the project site samples for analysis.
- B. Field Blank: Prepared in the field using organic-free water. These QC samples accompany project site samples to the laboratory and are analyzed for specific chemical parameters unique to the project site where they were prepared.
- C. Duplicates: Duplicated samples are collected "second samples" from a selected well and project site. They are collected as either split samples or second-run samples collected from the same well.
- D. Equipment Blank: Periodic QC sample collected from field equipment rinsate to verify decontamination procedures.

The number and types of QC samples are determined as follows:

- A. Up to 2 wells - Trip Blank Only
- B. 2 to 5 Wells - 1 Field Blank and 1 Trip Blank
- C. 5 to 10 Wells - 1 Field blank, 1 Trip Blank, and 1 Duplicate
- D. More than 10 Wells - 1 Field Blank, 1 Trip Blank, and 1 Duplicate per each 12 wells
- E. If sampling extends beyond one day, quality control samples will be collected for each day.

SAMPLE COLLECTION

This section describes the routine procedures followed by G-R while collecting ground-water samples for chemical analysis. These procedures include decontamination, water-level measurements, well purging, physical parameter measurements, sample collection, sample preservation, sample handling, and sample documentation. Critical sampling objectives for G-R are to:

1. Collect ground-water samples that are representative of the sampled matrix and,
2. Maintain sample integrity from the time of sample collection to receipt by the analytical laboratory.

Sample analyses methods, containers, preservation, and holding times are presented in Table 1.

Decontamination Procedures

All physical parameter measuring and sampling equipment are decontaminated prior to sample collection using Alconox or equivalent detergent followed by steam cleaning with deionized water. Any sampling equipment surfaces or parts that might absorb specific contaminants, such as plastic pump valves, impellers, etc., are cleaned in the same manner.

Sample bottles, bottle caps, and septa used for sampling volatile organics are thoroughly cleaned and prepared in the laboratory. Sample bottles, bottle caps, and septa are protected from all potential chemical contact before actual usage at a sample location.

During field sampling, equipment placed in a well are decontaminated before purging or sampling the next well. The equipment are decontaminated by cleaning with Alconox or equivalent detergent followed by steam cleaning with deionized water.

Water-Level Measurements

Prior to purging and sampling a well, the static-water levels are measured in all wells at a project site using an electric sounder and/or calibrated portable oil-water interface probe (Figure 3). Both static water-level and separate-phase product thickness are measured to the nearest ± 0.01 foot. The presence of separate-phase product is confirmed using a clean, acrylic or polyvinylchloride (PVC) bailer, measured to the nearest ± 0.01 foot with a decimal scale tape.

Water-Level Measurements (continued)

The monofilament line used to lower the bailer is replaced between wells with new line to preclude the possibility of cross-contamination. Field observations (e.g. well integrity, product color, turbidity, water color, odors, etc.) are noted on the G-R Well Sampling Field Data Sheet shown in Figure 3. Before and after each use, the electric sounder, interface probe and bailer are decontaminated by washing with Alconox or equivalent detergent followed by rinsing with deionized water to prevent cross-contamination.

As mentioned previously, water-levels are measured in wells with known or suspected lowest dissolved chemical concentrations to the highest dissolved concentrations.

Well Purging

Before sampling occurs, well casing storage water and interstitial water in the artificial sand pack will be purged using (1) a positive displacement bladder pump constructed of inert, non-wetting, Teflon and stainless steel, (2) a pneumatic-airlift pumping system, (3) a centrifugal pumping system, or (4) a Teflon or Stainless steel bailer (Figure 4). Methods of purging will be assessed based on well size, location, accessibility, and known chemical conditions. Individual well purge volumes are calculated from borehole volumes which take into account the sand packed interval in the well annular space. As a general rule, a minimum of 3 and a maximum of 10 borehole volumes will be purged. Wells which dewater or demonstrate slow recharge periods (i.e. low-yield wells) during purging activities may be sampled after fewer purging cycles. If a low-yield (low recovery) well is to be sampled, sampling will not take place until at least 80 percent of the previously measured water column has been replaced by recharge, or as per local requirements. Physical parameter measurements (temperature, pH, and specific conductance) are closely monitored throughout the well purging process and are used by the G-R sampling crew as indicators for assessing sufficient purging. Purging is continued until all three physical parameters have stabilized. Specific conductance (conductivity) meters are read to the nearest ± 10 umhos/cm, and are calibrated daily. pH meters are read to the nearest ± 0.1 pH units and are calibrated daily. Temperature is read to the nearest 0.1 degree F. Calibration of physical parameter meters will follow manufacturers specifications. Monitoring wells will be purged according to the protocol presented in Figure 4. Collected field data during purging activities will be entered on the G-R Well Sampling Field Data Sheet shown in Figure 3. Copies of the G-R Field Data Sheets will be reviewed by the G-R Sampling Manager for accuracy and completeness.

DOCUMENTATION

Sample Container Labels

Each sample container will be labeled by an adhesive label, noted in permanent ink immediately after the sample is collected. Label information will include:

- Sample point designation (i.e. well number or code)
- Sampler's identification
- Project number
- Date and time of collection
- Type of preservation used

Well Sampling Data Forms

In the field, the G-R sampling crew will record the following information on the Well Sampling Data Sheet for each sample collected:

- Project number
- Client
- Location
- Source (i.e. well number)
- Time and date
- Well accessibility and integrity
- Pertinent well data (e.g. depth, product thickness, static water-level, pH, specific conductance, temperature)
- Calculated and actual purge volumes

Chain-of-Custody

A Chain-of-Custody record (Figure 5) shall be completed and accompany every sample and every shipment of samples to the analytical laboratory in order to establish the documentation necessary to trace sample possession from time of collections. The record will contain the following information:

- Sample or station number or sample identification (ID)
- Signature of collector, sampler, or recorder
- Date and time of collection
- Place of collection
- Sample type
- Signatures of persons involved in chain of possession
- Inclusive dates of possession

Samples shall always be accompanied by a Chain-of-Custody record. When transferring the samples, the individual relinquishing and receiving the samples will sign, date, and note the time on the Chain-of-Custody record. G-R will be responsible for notifying the laboratory coordinator when and how many samples will be sent to the laboratory for analysis, and what types of analyses shall be performed.

TABLE 1

SAMPLE ANALYSIS METHODS, CONTAINERS, PRESERVATIONS, AND HOLDING TIMES

<u>Parameter</u>	<u>Analytical Method</u>	<u>Reporting Units</u>	<u>Container</u>	<u>Preservation</u>	<u>Maximum Holding Time</u>
Total Petroleum Hydrocarbons (gasoline)	EPA 8015 (modified)	mg/l ug/l	40 ml. vial glass, Teflon	cool, 4 C HCl to pH<2	14 days (maximum)
Benzene	EPA 8020	mg/l	50 ml. vial	cool, 4 C	7 days (w/o preservative)
Toluene		ug/l	glass, Teflon lined septum	HCl to pH<2	14 days (w preservative)
Ethylbenzene					
Xylenes (BTEX)		mg/l	1 l glass, Teflon		
Oil & Grease	SM 503E	ug/l	lined septum	H2SO4 to pH<2	28 days (maximum)
Total Petroleum Hydrocarbons (Diesel)	EPA 8015 (modified)	mg/l ug/l	40 ml. vial glass, Teflon lined septum	cool, 4 C	14 days (maximum)
Halogenated Volatile Organics (chlorinated solvents)	8010	mg/l ug/l	40 ml. vial glass, Teflon lined septum	cool, 4 C	14 days (maximum)
Non chlorinated solvents	8020	mg/l ug/l	40 ml. vial glass, Teflon lined septum	cool, 4 C HCl to pH<2	14 days (maximum)
Volatile Organics	8240	mg/l ug/l	40 ml. vial glass, Teflon lined septum	cool, 4 C	14 days (maximum)
Semi-Volatile Organics	8270	mg/l ug/l	40 ml. vial glass, Teflon lined septum	cool, 4 C	14 days (maximum)
Specific Conductance (Field test)		umhos/cm			
pH (Field test)		pH units			
Temperature (Field test)		Deg F			

Field location of boring:	Project No.:	Date:	Boring No.:
	Client:		
	Location:		
	City:		Sheet of
	Logged by:	Driller:	

Drilling method: _____

Hole diameter: _____	Top of Box Elevation: _____	Datum: _____
----------------------	-----------------------------	--------------

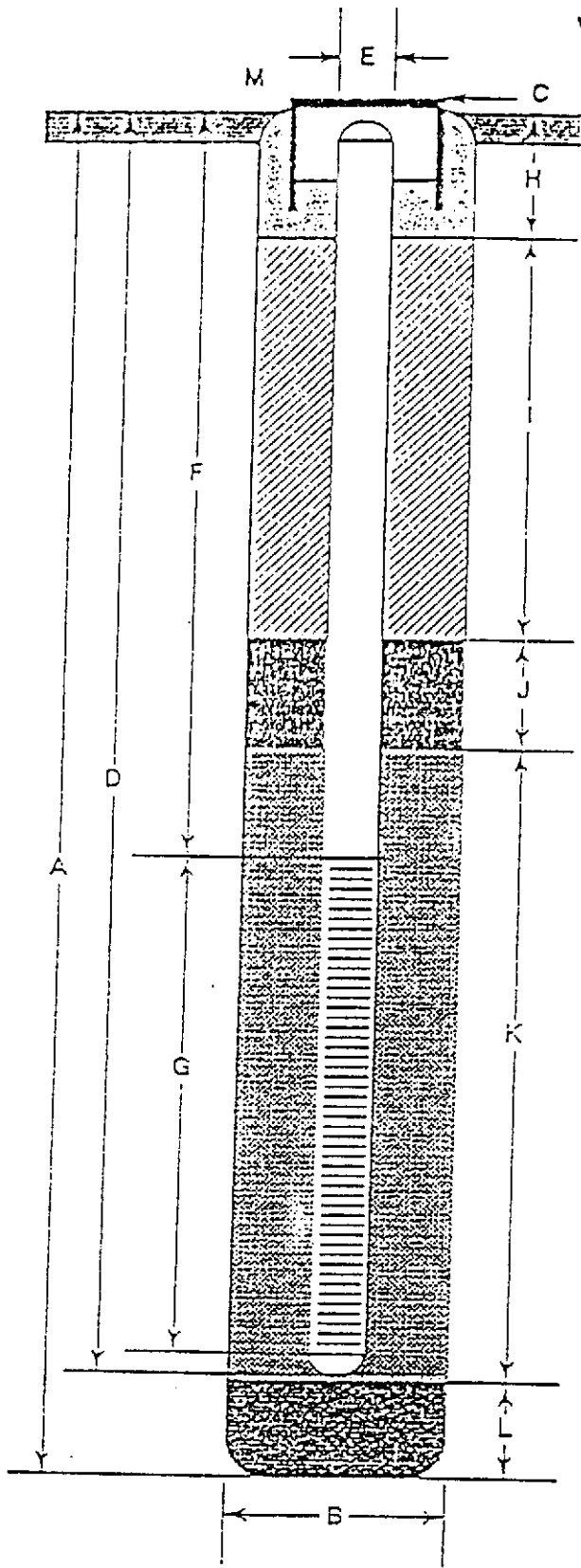
PID (ppm)	Bivalent or Pressure (psi)	Type of Sample	Sample Number	Depth (ft.)	Sample	Well Depth	Soil Group Symbol (USCS)	Water Level	
								Time	Date

								Description	

Remarks:

FIGURE 1

WELL CONSTRUCTION DETAIL



- A Total Depth of Boring _____ ft.
- B Diameter of Boring _____ in.
Drilling Method _____
- C Top of Box Elevation _____ ft.
 Referenced to Mean Sea Level
 Referenced to Project Datum
- D Casing Length _____ ft.
Material _____
- E Casing Diameter _____ in.
- F Depth to Top Perforations _____ ft.
- G Perforated Length _____ ft.
Perforated Interval from _____ to _____ ft.
Perforation Type _____
Perforation Size _____ in.
- H Surface Seal from _____ to _____ ft.
Seal Material _____
- I Backfill from _____ to _____ ft.
Backfill Material _____
- J Seal from _____ to _____ ft.
Seal Material _____
- K Gravel Pack from _____ to _____ ft.
Pack Material _____
- L Bottom Seal _____ ft.
Seal Material _____
- M _____



GeoStrategies Inc.

Well Construction Detail

WELL NO. _____

JOB NUMBER _____

REVIEWED BY RG/CSG

DATE _____

REVISED DATE _____

REVISED DATE _____

FIGURE 2

COMPANY _____ JOB # _____
 LOCATION _____ DATE _____
 CITY _____ TIME _____

Well ID. _____ Well Condition _____

Well Diameter _____ in. Hydrocarbon Thickness _____ ft.

Total Depth _____ ft.

Depth to Liquid- _____ ft.

Volume Factor (VF)	2" = 0.17	6" = 1.50	12" = 5.00
	3" = 0.30	8" = 2.00	
	4" = 0.66	10" = 4.10	

(# of casing volumes) _____ x _____ x(VF) _____ = (Estimated Purge Volume) _____ gal.

Purging Equipment _____

Sampling Equipment _____

Starting Time _____ Purging Flow Rate _____ gpm.

(Estimated Purge Volume) _____ gal. / (Purging Flow Rate) _____ gpm. = (Anticipated Purging Time) _____ min.

Time	pH	Conductivity	Temperature	Volume
_____	_____	_____	_____	_____
_____	_____	_____	_____	_____
_____	_____	_____	_____	_____
_____	_____	_____	_____	_____
_____	_____	_____	_____	_____
_____	_____	_____	_____	_____

Did well dewater? _____ If yes, time _____ Volume _____

Sampling Time _____ Weather Conditions _____

Analysis _____ Bottles Used _____

Chain of Custody Number _____

COMMENTS _____

FOREMAN _____

ASSISTANT _____

Monitoring Well Sampling Protocol Schematic

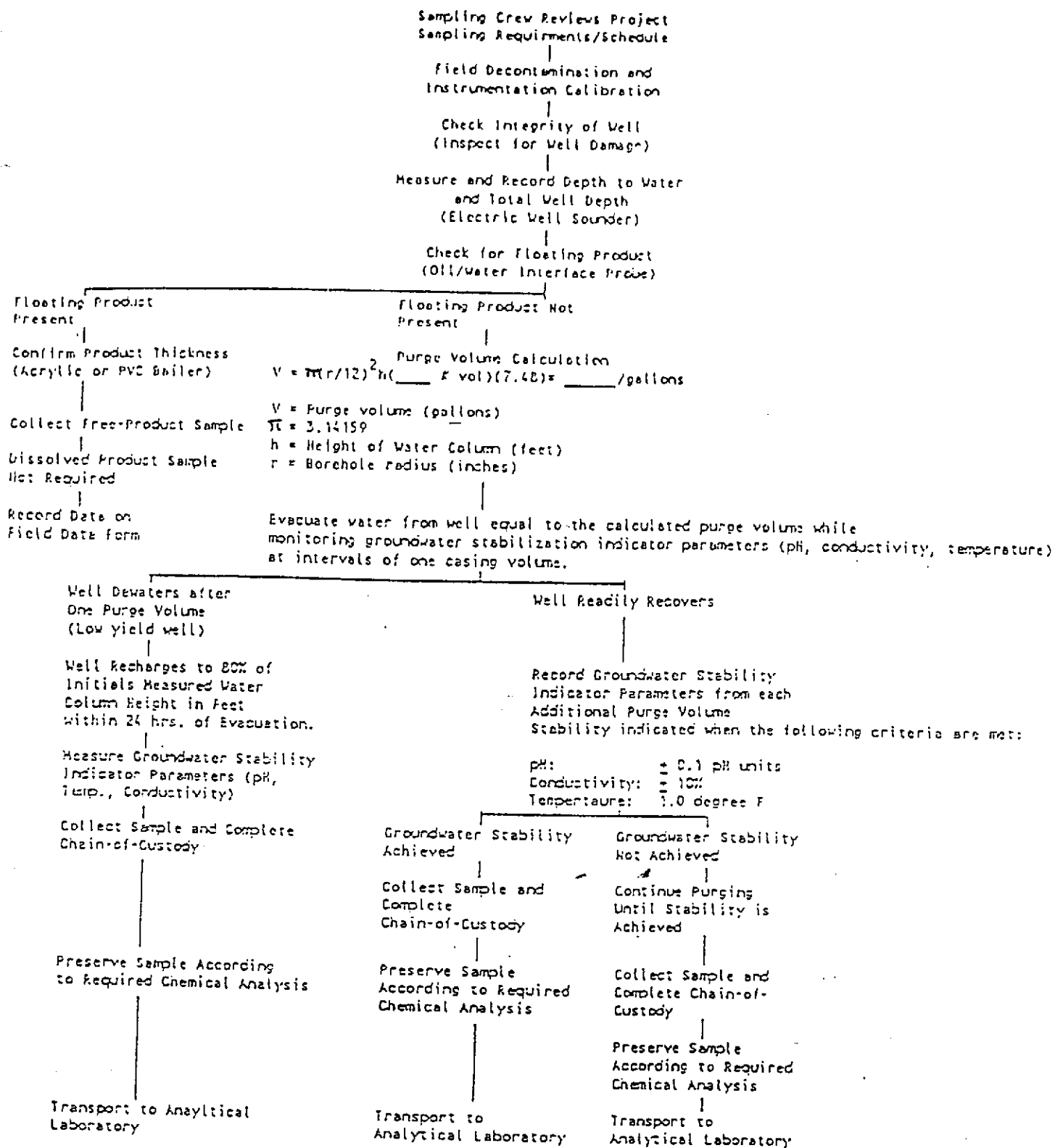


FIGURE 4

COMPANY _____ JOB NO. _____

JOB LOCATION _____

CITY _____ PHONE NO. _____

AUTHORIZED _____ DATE _____ P.O. NO. _____

SAMPLE ID	NO. OF CONTAINERS	SAMPLE MATRIX	DATE/TIME SAMPLED	ANALYSIS REQUIRED	SAMPLE CONDITION LAB ID

RELINQUISHED BY: _____

RECEIVED BY: _____

RELINQUISHED BY: _____

RECEIVED BY: _____

RELINQUISHED BY: _____

RECEIVED BY LAB: _____

DESIGNATED LABORATORY: _____ DHS #: _____

REMARKS: _____

DATE COMPLETED _____ FOREMAN _____