



**CONESTOGA-ROVERS
& ASSOCIATES**

To: Mr. Jerry Wickham
Company: Alameda County Environmental Health
Address: 1131 Harbor Bay Parkway, 2nd Floor
Alameda, CA 94502
Phone: (510) 567-6700
From: Mark Jonas
Phone: (510) 420-3307
Date: June 11, 2008
Re: 1432 Harrison Street, Oakland - Reports
FLC # RO0000266

RECEIVED

10:28 am, Jun 23, 2008

Alameda County
Environmental Health

Transmittal

Dear Mr. Wickham,

Per your request, we are forwarding you copies of the following reports for your review and file for the above-referenced site:

1. RGA Environmental Inc. *Preliminary Site Assessment Report* dated April, 2, 1992.
2. Environmental Data Resources Inc. *Aerial Photo Package*, request date September 13, 2007.
3. Environmental Data Resources Inc. *Certified Sanborn Map Report*, request date September 13, 2007.

Please feel free to call me at (510) 420-3307 with any questions.

Sincerely,

Mark Jonas, P.G.
Conestoga-Rovers & Associates

cc: Mark Borsuk

Conestoga-Rovers & Associates, 5900 Hollis Street Suite A Emeryville CA 94608
Tel (510) 420-0700 Fax (510) 420-9170

Environmental Data Resources
September 13, 2007
Aerial Photo Package



EDR® Environmental
Data Resources Inc

The EDR Aerial Photo Decade Package

**540188-85 - Oakland, CA
1432 Harrison St.
Oakland, CA 94612**

Inquiry Number: 2027578.5

September 13, 2007

The Standard in Environmental Risk Information

**440 Wheelers Farms Road
Milford, Connecticut 06461**

Nationwide Customer Service

Telephone: 1-800-352-0050
Fax: 1-800-231-6802
Internet: www.edrnet.com

EDR Aerial Photo Decade Package

Environmental Data Resources, Inc. (EDR) Aerial Photo Decade Package is a screening tool designed to assist environmental professionals in evaluating potential liability on a target property resulting from past activities. EDRs professional researchers provide digitally reproduced historical aerial photographs, and when available, provide one photo per decade.

When delivered electronically by EDR, the aerial photo images included with this report are for ONE TIME USE ONLY. Further reproduction of these aerial photo images is prohibited without permission from EDR. For more information contact your EDR Account Executive.

Thank you for your business.
Please contact EDR at 1-800-352-0050
with any questions or comments.

Disclaimer - Copyright and Trademark Notice

This Report contains certain information obtained from a variety of public and other sources reasonably available to Environmental Data Resources, Inc. It cannot be concluded from this Report that coverage information for the target and surrounding properties does not exist from other sources. **NO WARRANTY EXPRESSED OR IMPLIED, IS MADE WHATSOEVER IN CONNECTION WITH THIS REPORT. ENVIRONMENTAL DATA RESOURCES, INC. SPECIFICALLY DISCLAIMS THE MAKING OF ANY SUCH WARRANTIES, INCLUDING WITHOUT LIMITATION, MERCHANTABILITY OR FITNESS FOR A PARTICULAR USE OR PURPOSE. ALL RISK IS ASSUMED BY THE USER. IN NO EVENT SHALL ENVIRONMENTAL DATA RESOURCES, INC. BE LIABLE TO ANYONE, WHETHER ARISING OUT OF ERRORS OR OMISSIONS, NEGLIGENCE, ACCIDENT OR ANY OTHER CAUSE, FOR ANY LOSS OF DAMAGE, INCLUDING, WITHOUT LIMITATION, SPECIAL, INCIDENTAL, CONSEQUENTIAL, OR EXEMPLARY DAMAGES. ANY LIABILITY ON THE PART OF ENVIRONMENTAL DATA RESOURCES, INC. IS STRICTLY LIMITED TO A REFUND OF THE AMOUNT PAID FOR THIS REPORT.** Purchaser accepts this Report AS IS. Any analyses, estimates, ratings, environmental risk levels or risk codes provided in this Report are provided for illustrative purposes only, and are not intended to provide, nor should they be interpreted as providing any facts regarding, or prediction or forecast of, any environmental risk for any property. Only a Phase I Environmental Site Assessment performed by an environmental professional can provide information regarding the environmental risk for any property. Additionally, the information provided in this Report is not to be construed as legal advice.

Copyright 2007 by Environmental Data Resources, Inc. All rights reserved. Reproduction in any media or format, in whole or in part, of any report or map of Environmental Data Resources, Inc., or its affiliates, is prohibited without prior written permission.

EDR and its logos (including Sanborn and Sanborn Map) are trademarks of Environmental Data Resources, Inc. or its affiliates. All other trademarks used herein are the property of their respective owners.

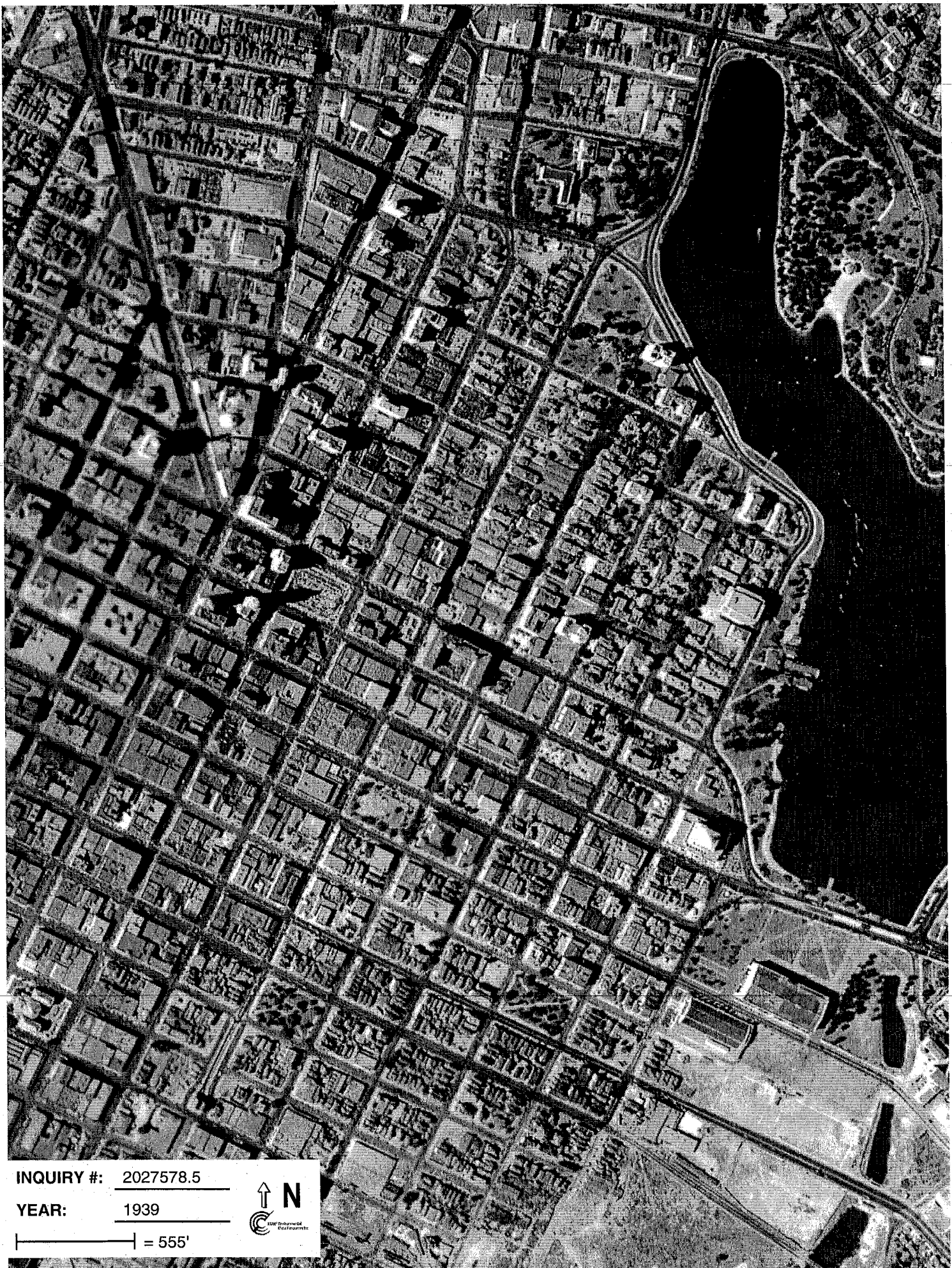
Date EDR Searched Historical Sources:

Aerial Photography September 13, 2007

Target Property:

1432 Harrison St.
Oakland, CA 94612

<u>Year</u>	<u>Scale</u>	<u>Details</u>	<u>Source</u>
1939	Aerial Photograph. Scale: 1"=555'	Flight Year: 1939	Fairchild
1946	Aerial Photograph. Scale: 1"=655'	Flight Year: 1946	Jack Ammann
1958	Aerial Photograph. Scale: 1"=555'	Flight Year: 1958	Cartwright
1965	Aerial Photograph. Scale: 1"=333'	Flight Year: 1965	Cartwright
1982	Aerial Photograph. Scale: 1"=690'	Flight Year: 1982	WSA
1993	Aerial Photograph. Scale: 1"=666'	Flight Year: 1993	USGS
1998	Aerial Photograph. Scale: 1"=666'	Flight Year: 1998	USGS



INQUIRY #: 2027578.5

YEAR: 1939

— = 555'





INQUIRY #: 2027578.5

YEAR: 1946

— = 655'





INQUIRY #: 2027578.5

YEAR: 1958

— = 555'





INQUIRY #: 2027578.5

YEAR: 1965

| = 333'





INQUIRY #: 2027578.5

YEAR: 1982

— | = 690'





INQUIRY #: 2027578.5

YEAR: 1993

— = 666'





INQUIRY #: 2027578.5

YEAR: 1998

— = 666'



PGA Environmental
April 2, 1992
Preliminary Site Assessment Report



Preliminary Site Assessment Report
Harrison Garage
1432 - 1434 Harrison Street
Oakland, California
April 2, 1992

ENVIRONMENTAL
CONSULTANTS
GEOLOGISTS
ENGINEERS
INDUSTRIAL
HYGIENISTS

1260 45TH STREET
EMERYVILLE, CA
94608-2907
510.547.7771
FAX 510.547.1983

LOS ANGELES
213.930.1197

**HARRISON STREET PROJECT
TABLE OF CONTENTS**

1. INTRODUCTION	1
2. SITE BACKGROUND	1
3. FIELD INVESTIGATIONS	1
4. SOIL INVESTIGATIONS	2
A. Waste Oil Tank And Piping Area (BASEMENT)	2
B. Hydraulic Lift and Sump Areas (GROUND FLOOR)	2
C. Gasoline Tank Area (HARRISON STREET SIDEWALK)	3
D. Pump Island And Piping Areas (GROUND FLOOR)	3
5. SITE GEOLOGY	3
6. LABORATORY ANALYSES AND RESULTS	4
A. Soils	4
B. Waste Oil Tank and Piping Area (BASEMENT)	4
C. Hydraulic Lift and Sump Areas (GROUND FLOOR)	5
D. Gasoline Tank Area (HARRISON STREET SIDEWALK)	5
E. Water Samples Results	6
7. CONCLUSION	7
8. LIST OF FIGURES	
A. Figure 1. Site Location Map	
B. Figure 2. Boring Locations Basement	
C. Figure 3. Boring Locations Lift and Sump Areas	
D. Figure 4. Boring Locations Gasoline Tank Area	
E. Figure 5. Boring Location Pump Island	
9. LIST OF APPENDICES	
A. Appendix A. Lithologic Logs	
B. Appendix B. Laboratory Results Soil Samples	
C. Appendix C. Laboratory Results Ground Water Samples	
10. LIST OF TABLES	
A. Table 1. Summary of Lab Results Tanks and Piping in Basement	
B. Table 2. Summary of Lab Results Hydraulic and Sump Areas	
C. Table 3. Summary of Lab Results Tank Area Harrison St.	
D. Table 4. Summary of Lab Results Groundwater Samples	

AHBI 100801

Written By:

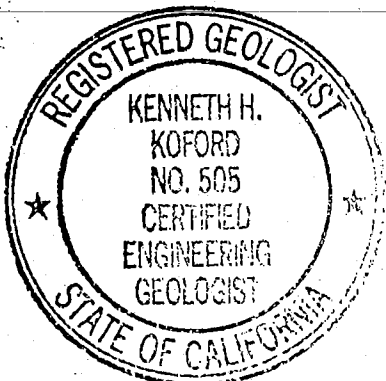
Chris Wabuzoh
Project Geologist
REA #02842

Reviewed By:

Robert E. Gils
CIH #1151

Kenneth H. Koford

Ken Koford
Certified Engineering Geologist
#505





**HARRISON STREET PROJECT
OAKLAND, CA
March 26, 1992**

1. INTRODUCTION

Alvin H. Bacharach, Inc. contracted RGA, Inc. to perform a site assessment at Harrison Street Garage, located at 1432-1434 Harrison Street, Oakland, California. The scope of the assessment was to drill soil borings and collect samples as follows: 1. Around the waste oil tank and associated pipings in the basement. 2. Around the gasoline tanks on the Harrison Street sidewalk. 3. Around the hydraulic lift and sump areas on the floor level. 4. Around the gasoline pump island and associated pipings on the floor level. 5. Wherever possible collect groundwater samples to be used in determining groundwater quality. The collected samples were analyzed to determine the presence or absence of total petroleum hydrocarbons as gasoline (TPH-G), and as diesel (TPH-D), volatile aromatic hydrocarbons (BTEX), polychlorinated biphenyls (PCBs), priority metals (CAM-17), and chlorinated and halogenated volatile organics. The findings from this assessment are part of the basis for developing a site safety plan for the removal of the underground storage tanks and the associated piping.

2. SITE BACKGROUND

Harrison Street Garage is situated within the business district of Oakland. It is located at the corner of Harrison Street and 15th street, (see Figure 1). The Harrison Street side of the garage is a one story building, and the Alice Street side of the garage is a three story building. The garage is used commercially for the parking of automobiles and light trucks. In the past the site was a Chevron Service Station, with underground storage tanks, dispensers and associated piping.

Previous work performed at the site include a Phase I and a Phase II Site Assessments by SCS Engineers, and Subsurface Consultants, Inc. respectively. Preliminary work suggested the potential for possible soil contamination by hydrocarbon compounds. SCS investigation showed the presence of petroleum hydrocarbons in the soil.

3. FIELD INVESTIGATIONS

On January 16, 21, 22, 30, February 3, 4, and 5, 1992, RGA personnel drilled 23 soil borings, using a low access rig. Borings B-1 thru B-12 were located around the waste oil tanks and associated pipings (see Figure 2). Borings B-13, B-14, and B-15 were located at the hydraulic lift area and B-16 was located at the sump area (see

ENVIRONMENTAL
CONSULTANTS
GEOLOGISTS
ENGINEERS
INDUSTRIAL
HYGIENISTS

1260 45TH STREET
EMERYVILLE, CA
94608-2907
510.547.7771
FAX 510.547.1983

LOS ANGELES
213.930.1197

Figure 3). Borings B-17, B-18, B-19, and B-20 were located at the gasoline tank area (see Figure 4). Borings B-21, B-22, and B-23 were located at the pump island and the associated piping areas (see Figure 5). Details of soil borings and lithologic logs are contained in Appendix A.

Soil samples were collected using a downhole closed spoon sampler or zero contamination sampler containing a sampling sleeve. The samples were collected at 5-foot intervals. The sleeve was sealed with aluminum foil, Teflon caps and duct tape, and placed on ice, pending laboratory analyses. A cut-out sleeve was put in a zip-loc bag and the head space was monitored using an organic vapor analyzer (OVA), and later examined for lithologic description using the unified soil classification system (USCS). Before each sampling run the sampler and sleeve were cleansed with trisodium phosphate solution and double rinsed in water and distilled water. Selected samples were recorded on a chain-of-custody and sent to state-certified Carter Analytical Laboratories, Inc. in Campbell, California.

4. SOIL INVESTIGATIONS

A. Waste Oil Tank And Piping Area (BASEMENT)

Soil borings B-1 thru B-8 were located along the piping at 20-foot intervals. This interval coincided with the pipe joints which were already exposed. The piping was laid 1 1/2 feet below the basement floor. Soil samples were collected from 2 to 3 feet below the piping. Borings B-9 thru B-12 were located around the two waste oil tanks. Due to a possible concrete vault or building foundation, auger refusal was experienced at 5 feet in B-9, 8 feet in B-10, and about 3 to 4 feet in B-11 and B-12. Soil samples were only collected from B-9, and B-10 (see Figure 2 for detailed boring locations). Selected samples from this area were analyzed for benzene, toluene, ethyl benzene, and xylene (BTEX), total petroleum hydrocarbons as gasoline (TPH-G) and as diesel (TPH-D), priority pollutant metals (CAM 17), chlorinated hydrocarbons, oil and grease, and polychlorinated biphenyls (PCBs). The samples were analyzed using appropriate EPA methods.

B. Hydraulic Lift and Sump Areas (GROUND FLOOR)

Soil borings B-13, B-14, and B-15 were located adjacent to the two hydraulic lifts. Boring B-16 was located adjacent to the sump. All borings were drilled to 25 feet below ground surface (see Figure 3 for detailed boring locations). Soil samples were collected at 5, 10, and 15-foot intervals. The soil-water interface was at 15 feet below ground surface. Based on field screening, two samples per boring were sent for laboratory analyses. Samples from B-13 had hydrocarbon odor and suggested the presence of petroleum hydrocarbons. Groundwater was encountered in all the

borings. Water yield in the borings was low to intermittent due to the tight clay soil. Only boring B-13 yielded sufficient water for laboratory analyses.

C. Gasoline Tank Area (HARRISON STREET SIDEWALK)

Two underground storage tanks are installed at about 5 feet below the sidewalk on Harrison Street. Soil borings B-17, B-18, B-19, and B-20 were located around the fill ends and pump ends of the tanks (see Figure 4 for detailed boring locations). Boring B-17, and B-19 were drilled to 5 feet below grade where groundwater was reached. Soil samples were collected at this depth. No samples were collected from B-18 because of auger refusal at about 3 to 4 feet below grade. Boring B-20 was drilled to 15 feet below grade. This was designed to characterize the subsurface following the sudden contact with groundwater. Groundwater samples and one soil sample were collected from B-17 and B-20. One soil sample was collected from B-19. All samples were sent to the laboratory for chemical analyses.

D. Pump Island And Piping Areas (GROUND FLOOR)

Soil boring B-21 was located along the piping which is between the tanks and dispensers and measures less than 20 linear feet. Borings B-22 and B-23 were located at the dispensers (see Figure 5 for detailed boring locations). Boring B-21 was drilled to 15 feet below grade because of past repairs performed along the piping. Borings B-22 and B-23 were drilled to 10 feet below grade. Dispenser pipings are usually 2 to 3 feet below ground surface. Based on field screening, two soil and groundwater samples were collected from B-21, B-22, and B-23, and sent to the laboratory for chemical analyses.

5. SITE GEOLOGY

During drilling in the basement the lithology encountered was mostly silty sand from surface to 8 feet below the basement floor. Groundwater was not encountered during drilling. Borings drilled in the ground floor (lift and sump areas), were mostly silty sand from grade to about 10 feet below grade. From here to 15 feet below grade it changed to clayey sand with low plasticity. At about 15 feet below grade the soil-water interface was reached. At the soil-water interface the soil type was mostly sandy clay. From here to 25 feet below grade the lithology gradually changed to clayey sand. Groundwater yield in the soil borings were intermittent to low.

During drilling at the gasoline tank area on Harrison Street sidewalk, and at the pump island area on the ground floor, the lithology encountered was mostly clayey sand from the ground surface to 5 feet below ground surface. The clayey sand was saturated, and had low plasticity. Groundwater was encountered at about 3 to 5 feet below ground surface. Soil borings B-17, B-18, and B-19, were stopped at 5 feet

below ground surface. In Borings B-20, B-21, B-22, and B-23, the clayey sand continued to 10 feet below ground surface. Borings B-22, and B-23 were stopped at 10 feet below ground surface. Borings B-20, and B-21 were drilled to 15 feet below ground surface. The lithology from 10 feet to 15 feet below ground surface gradually changed from clayey sand to silty sand.

6. LABORATORY ANALYSES AND RESULTS

A. Soils

Based on field screening, selected samples were sent to Carter Analytical Laboratories for chemical analyses. Detailed laboratory results are contained in Appendix B.

B. Waste Oil Tank and Piping Area (BASEMENT)

Soil samples collected from this area were analyzed for TPH-G, TPH-D, BTEX, priority metals, PCBs, and oil and grease. Oil and grease results for borings B-9 and B-10 were lost by Carter Laboratories. Laboratory results showed the following:

1. Levels of TPH-G: 27.3 ppm in B1-2', 1.6 ppm in B3-2', 1.9 ppm in B4-2', 2.6 ppm in B7-2', and 2.44 ppm in B9-5'.
2. Levels of TPH-D: 55.7 ppm in B1-2', 1.5 ppm in B2-2', 1.6 ppm in B3-2', 24 ppm in B4-2', 2.5 ppm in B5-2', 24.3 ppm in B6-2', 6.3 ppm in B7-2', 2.9 ppm in B8-2', 11.1 ppm in B9-5', and 109 ppm in B10-8'.
3. Levels of BTEX: with exception of toluene all the parameters of BTEX were non-detectable or below the detection limits in samples B1-2' thru B8-2'. Toluene was non-detectable in B9-5' and B10-8'.
4. Levels of Oil and Grease: 54.2 ppm in B1-2', 54.8 ppm in B4-2', 50.9 ppm in B5-2', 221 ppm in B7-2', 55.1 ppm in B8-2'.
5. Levels of halogenated volatile organics: This compound was non-detectable or below detection limits in all the samples (B-1 thru B-10).
6. Levels of PCBs: This compound was non-detectable or below detection limits in all the samples (B-1 thru B-10).
7. Levels of priority pollutant metals: Mercury was above ten times the STLC Regulatory Level in the samples from borings B-1 through B-10. Selenium

was above ten times the STLC Regulatory Level in samples from borings B5-2 through B-9.

Detailed laboratory results for this area are contained in Appendix B, and summary of the results are in Table 1.

C. Hydraulic Lift and Sump Areas (GROUND FLOOR)

Soil samples collected from borings B-13, B-14, B-15, and B-16 were analyzed for TPH-G, TPH-D, BTEX, PCBs, priority metals, and oil and grease. Laboratory results of TPH-D, TPH-G, BTEX, oil and grease for borings B-15 and B-16, and oil and grease analyses for B-13 and B-14, were misplaced by Carter Laboratory. ←
Laboratory results showed the following:

1. Levels of TPH-G: There were 83.2 ppm in B13-5', 135.0 ppm in B13-15', less than detection limit in B14-5', and 2.5 ppm in B14-15'.
2. Levels of TPH-D: There were 1.63 ppm in B13-5', less than detection limits in B13-15', and B14-5', and 17.3 in B14-15'.
3. Levels of BTEX: Toluene was detected in B13-5' and B13-15', at .068 ppm and .71 ppm respectively. Ethyl Benzene was detected only in B13-5' and Xylene was detected in B13-15'. In other samples the parameters of BTEX were not tested or were less than detection limits.
4. Levels of Priority Metals: Mercury was above ten times the STLC Regulatory Level in samples from borings B13-5', B13-15', B14-5', B14-15', B9-5' and B10-8'. Selenium was above ten times the STLC Regulatory Level in samples from borings B13-5', B13-15' and B14-15'.
5. Levels of PCBs: This compound was less than detection limit in all the samples, except in B13-5', which had 245 ppm.
6. Levels of Chlorinated volatile organics: This compound was less than detection limit in all the samples.

Detailed laboratory results for this area are contained in Appendix B, and summary of the results are in Table 2.

D. Gasoline Tank Area (HARRISON STREET SIDEWALK)

Selected soil samples collected from borings B-19 and B-20 were analyzed for TPH-G, TPH-D, and BTEX. Samples from B-17 were analyzed for priority metals, oil and grease, PCBs, and chlorinated hydrocarbons. Laboratory analyses showed the following:

1. Levels of TPH-G: With the exception of samples from boring B-22, all the soil samples from this area were below County action levels of 10 ppm. Samples B22-5' and B22-10' had 42.3 ppm and 1540 ppm, respectively, of TPH-G.
2. Levels of TPH-D: There were 26.0 ppm in B23-5', 670.0 ppm in B22-5', 175.0 ppm in B22-10', 15.7 ppm in B21-10', 16.7 ppm in B21-5', 22.7 ppm in B21-15', 24.0 ppm in B20-5', and 28.0 ppm in B19-5'. Samples B23-10' and B20-15' had no detectable levels of TPH-D.
3. Levels of BTEX: Benzene was detected in sample B22-10 at a level of .987 ppm, and was less than detection limit in the rest of the samples. Toluene was detected in all the samples and the levels were above the detection limit of .005 ppm. Ethyl Benzene was only detected in B22-10' at 1.67 ppm, and it was less than detection limit of .005 ppm in the rest of the samples. Xylene was detected above detection limit of .005 ppm in B22-5', B22-10', B21-10', B21-5', B20-5', and B19-5', and it was below detection limits in the rest of the samples.
4. Levels of Total Oil and Grease: Soil samples B20-15' and B17-5' were analyzed. The levels were 35.2 ppm and 39.1 ppm for B20-15' and B17-15', respectively.
5. Levels of Chlorinated Hydrocarbons: Only sample B17-5' was analyzed. All the parameters analyzed were less than detection limits in the sample.
6. Levels of PCBs: Samples B20-15', and B15-5' were analyzed. All the parameters were below detection limits in both samples.
7. Levels of Priority Metals: With the exception of Beryllium, Cadmium, Chromium, Cobalt, Molybdenum, Selenium, Silver, and Zinc, the rest of the 17 metals have more than ten times the STLC Regulatory levels.

Detailed laboratory results for this area are contained in Appendix B, and summary of the results are in Table 3.

E. Water Samples Results

Groundwater samples were collected from borings B-13, B-17, B-20, B-21, B-22, and B-23. Detailed laboratory results are contained in Appendix C, and summary of the results in Table 4. Laboratory results showed the following:

1. Levels of TPH-G: Water samples from four borings were analyzed. The levels were 60200.0 ppb in B-13, 96.0 ppb in B-17, 72.0 ppb in B-22, and 1020.0 ppb in B-23.
2. Levels of TPH-D: Water samples from borings B-13, B--17, B-22, and B-23 were analyzed. Results indicated that they were all less than detection limits.
3. Levels of BTEX: Water samples from borings B-13, B-17, B-22, and B-23, were analyzed. With the exception of B-21, Benzene was detected in all the samples, and levels ranged from 4.0 ppb to 55.0 ppb. Toluene was detected in B-13, B-17, B-22, and B-23, and the levels ranged from .7 ppb to 45.0 ppb. It was not detected in B-21. Ethyl Benzene was detected in B-13, and B-23, and the levels were 26.5 ppb and 2.0 ppb, respectively. The rest of the samples were less than detection limits. Xylene was detected in B-13, B-17, B-22, and B-23, and the values ranged from 3.0 ppb to 242.0 ppb. It was less than detection limits in the rest of the samples.
4. Levels Of Oil And Grease: Water sample from B-13 was analyzed for oil and grease, and it had 9721 ppb.

Levels Of Chlorinated Hydrocarbons: Water sample from B-17 was analyzed for chlorinated hydrocarbons, and it had 30 ppb of Chloroform, and 2.4 of Bromodichloromethane. The rest of the parameters were less than detection limits.

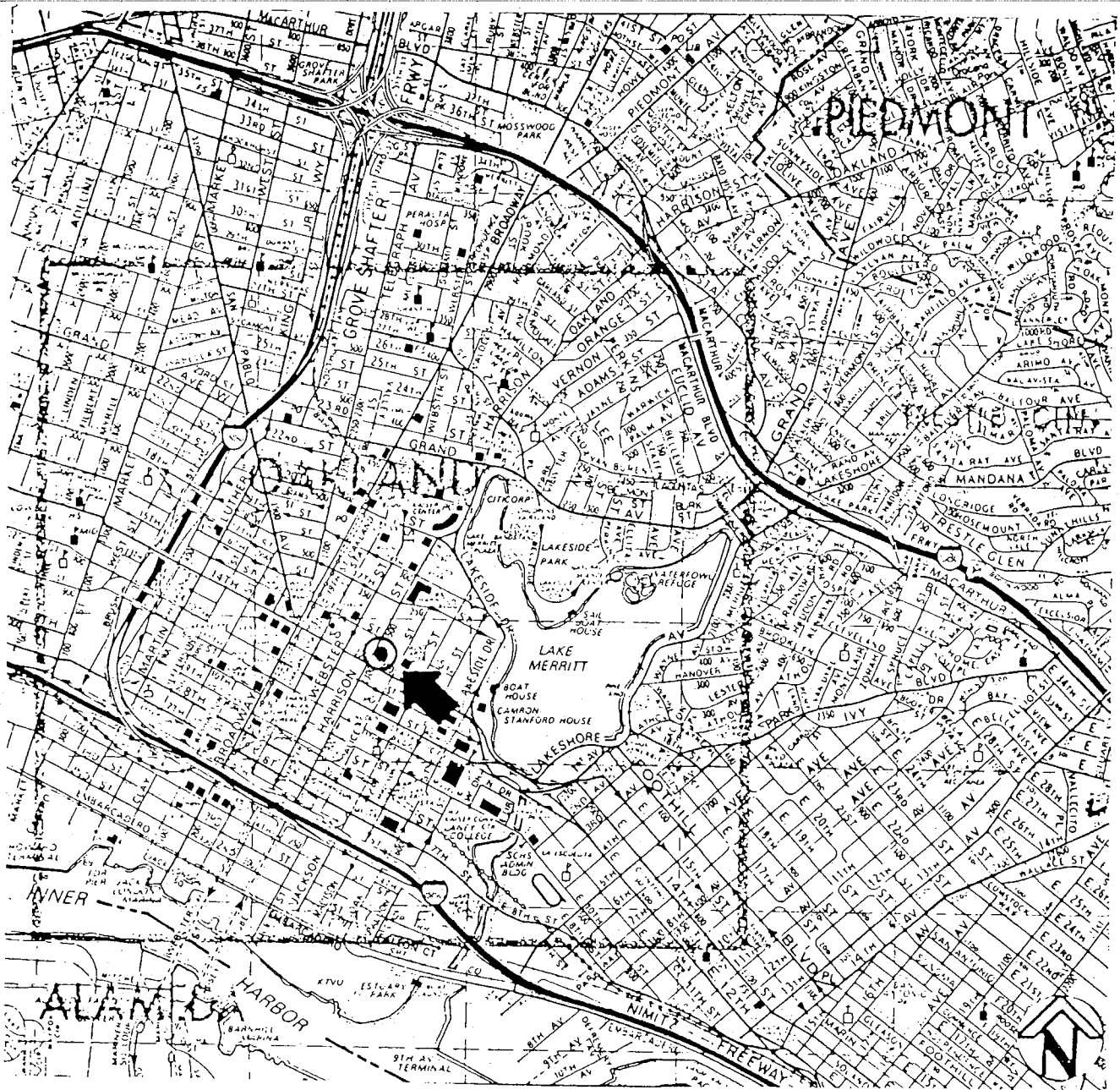
5. Levels of Total Lead: Water samples from B-20, B-21, B-22, and B-23 were analyzed for total lead, and the levels were 0.81 ppb, less than detection limit, 1.38 ppb, and 8.29 ppb, respectively.
6. Levels of Priority Pollutant Metals: Water sample from boring B-17 was analyzed for metals, and the results indicated that all the parameter were less than detection limits.

7. CONCLUSION

Based on the field observations, laboratory analyses and results of oil, and water samples from the subject site, the waste oil underground storage tanks in the basement appeared to be covered by a concrete vault. There are traces of hydrocarbon compounds around the tank and along the piping in the

basement. There are presence of hydrocarbon compounds and (PCBs) in the hydraulic lift area. Traces of free product were observed during subsurface investigations in boring B-13. There are low levels of petroleum hydrocarbons around the gasoline underground storage tanks area, and high levels of petroleum hydrocarbons around the dispensers.

Due to the tight clay and high retention of liquid by clay, it appears that lateral migration of contaminants in the unsaturated zone may be fairly limited.

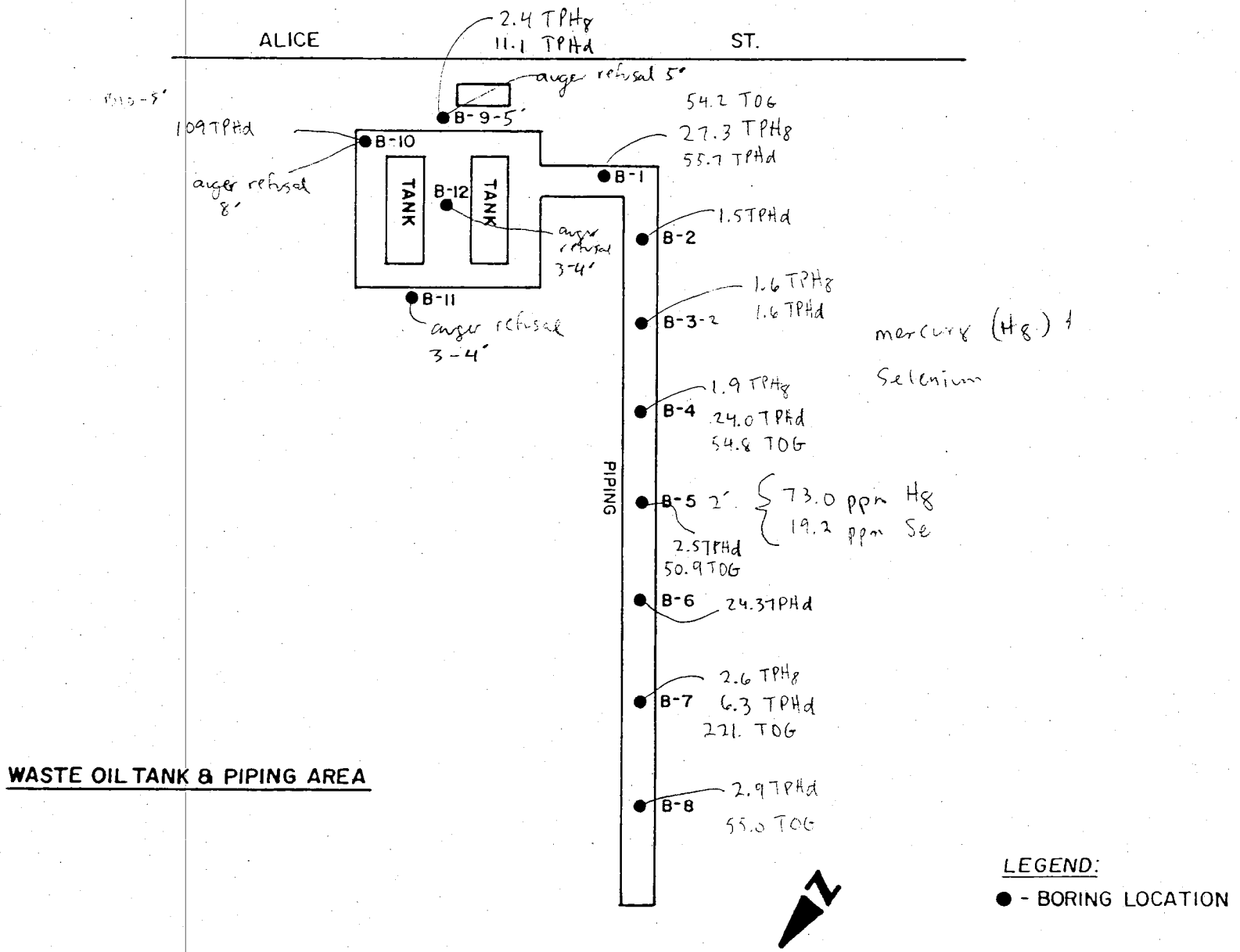


1432-1434 HARRISON STREET

LOCAL AREA SITE LOCATION MAP

⊙ - SITE LOCATION
FIGURE - 1

all values in ppm



RGA ENVIRONMENTAL INC.

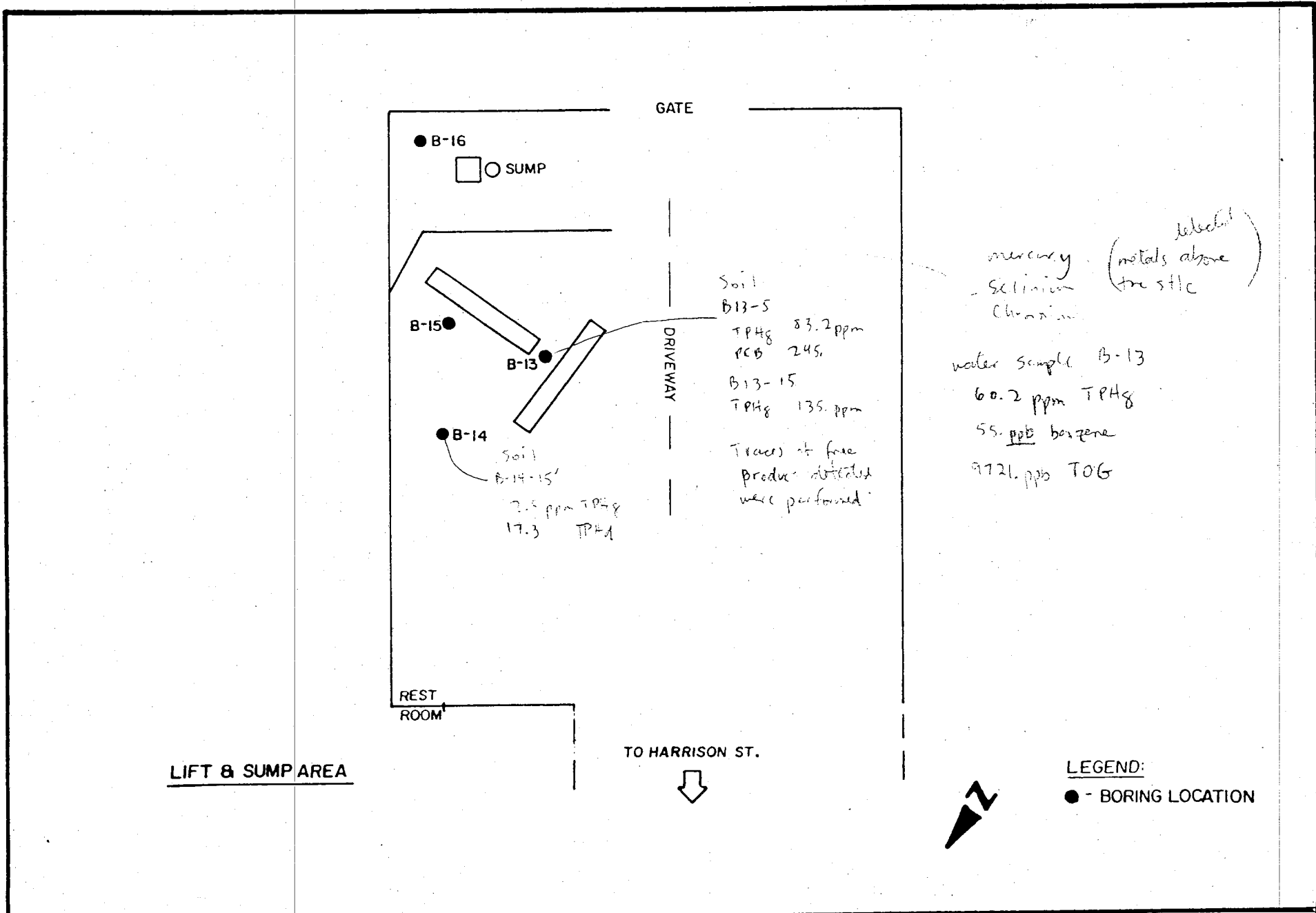
JOB CODE: 100801

SITE LOCATION: 1432-1434 HARRISON ST. OAKLAND

EMERYVILLE, CA

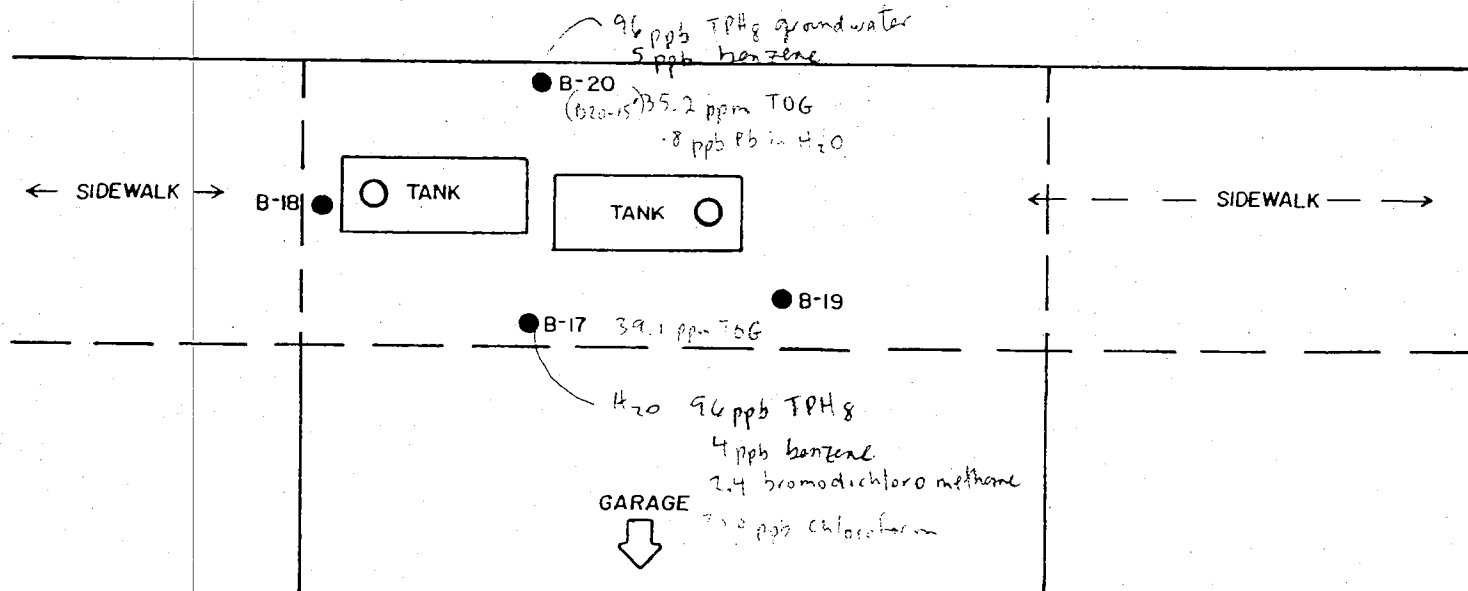
SCALE: 1" = 30' APPROX. FIGURE 2

BORING LOCATIONS - BASEMENT



RGA ENVIRONMENTAL INC.	JOB CODE: 100601	SITE LOCATION: 1432-1434 HARRISON ST. OAKLAND
EMERYVILLE, CA	SCALE: 1" = 15' APPROX. FIGURE 3	BORING LOCATIONS - LIFT & SUMP AREA

HARRISON ST.



GASOLINE TANK AREA (SIDEWALK)



LEGEND:

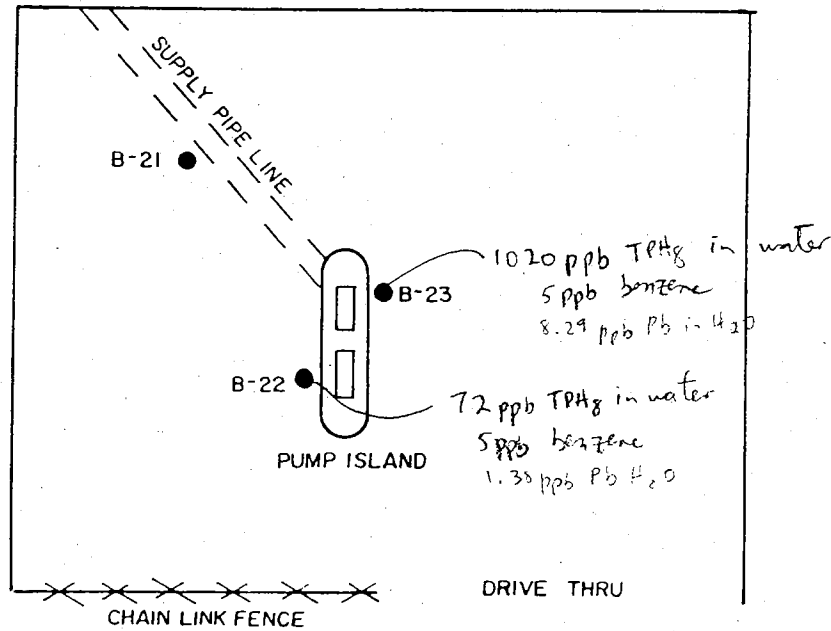
● - BORING LOCATION

RGA ENVIRONMENTAL INC.	JOB CODE 100801	SITE LOCATION: 1432 - 1434 HARRISON ST. OAKLAND
EMERYVILLE, CA	SCALE: 1" = 10' APPROX. FIGURE 4	BORING LOCATIONS - GASOLINE TANK AREA

HARRISON ST.

(TANKS AREA)

← SIDEWALK →



PUMP ISLAND AREA



LEGEND:

● - BORING LOCATION

RG ENVIRONMENTAL INC.

JOB CODE: 100801

SITE LOCATION: 1432-1434 HARRISON ST. OAKLAND

EMERYVILLE, CA

SCALE: 1" = 10' APPROX., FIGURE 5

BORING LOCATIONS - PUMP ISLAND AREA

TABLE 1E

Waste Metals - CAM - 17 (mg/Kg)

Metals	SLC	TTLG	B1-2'	B2-2'	B3-2'	B4-2'	B5-2'	B6-2'	B7-2'	B8-2'
Antimony	15	500	20.1	18.9	18.7	23.8	22.8	20.5	22.3	19.7
Arsenic	5	500	35.3	39.5	40.2	42.9	47.3	42.2	45.3	39.2
Barium	100	1000	80.5	LDL	32.6	39.2	45.5	47.5	42.3	29.9
Beryllium	.75	.75	LDL	LDL	LDL	LDL	LDL	LDL	LDL	LDL
Cadmium	1	100	LDL	LDL	LDL	LDL	LDL	LDL	LDL	LDL
Chromium	5	500	40.8	25.3	43.6	49.2	50.9	46.6	48.3	38.9
Cobalt	80	8000	6.91	2.0	7.54	8.28	9.34	8.34	9.22	6.74
Copper	25	2500	6.20	LDL	4.87	5.35	5.32	4.87	6.20	4.34
Lead	5	1000	LDL	LDL	LDL	LDL	LDL	LDL	LDL	LDL
Mercury	0.2	20	50.7	49.7	54.2	66.5	73.0	66.7	74.2	52.9
Molybdenum	350	3500	33.6	9.81	34.8	39.4	43.1	40.3	49.5	34.7
Nickel	20	2000	21.9	16.9	33.6	45.6	47.2	41.4	36.3	30.8
Selenium	1.0	100	15.3	LDL	17.0	19.2	19.2	16.9	18.9	15.3
Silver	5	500	LDL	LDL	LDL	LDL	LDL	LDL	LDL	LDL
Thallium	7	700	10.4	12.8	12.1	16.2	20.9	15.6	15.9	17.0
Vanadium	24	2400	27.6	11.0	29.5	31.0	32.1	27.2	27.9	24.4
Zinc	250	500	385.2	21.2	19.9	23.2	21.4	20.1	90.9	17.5

TABLE 1F

Chlorinated Hydrocarbons (mg/Kg)

Compounds	B9-5'	B10-8'	Compounds	B9-5'	B10-8'
Chloroethane	LDL	LDL	Chlorobenzene	LDL	LDL
Bromomethane	LDL	LDL	Ethylbenzene	LDL	LDL
Vinylchloride	LDL	LDL	1,3-Dichlorobenzene	LDL	LDL
Chloromethane	LDL	LDL	1,2-Dichlorobenzene	LDL	LDL
Methylene chloride	LDL	LDL	1,4-Dichlorobenzene	LDL	LDL
Trichlorofluoromethane	LDL	LDL			
1,1-Dichloroethene	LDL	LDL			
1,1-Dichloroethane	LDL	LDL			
trans-1,2-Dichloroethene	LDL	LDL			
Chloroform	LDL	LDL			
1,2-Dichloroethane	LDL	LDL			
1,1,1-Trichloroethane	LDL	LDL			
Carbon tetrachloride	LDL	LDL			
Bromodichloromethane	LDL	LDL			
1,2-Dichloropropane	LDL	LDL			
trans-1,3-Dichloropropene	LDL	LDL			
1,1,2-Trichloroethane	LDL	LDL			
Trichloroethene	LDL	LDL			
Benzene	LDL	LDL			
2-Chloroethylvinylether	LDL	LDL			
Dibromochloromethane	LDL	LDL			
cis-1,3-Dichloropropene	LDL	LDL			
Bromoform	LDL	LDL			
1,1,2,2-Tetrachloroethane	LDL	LDL			
Tetrachloroethene	LDL	LDL			
Toluene	LDL	LDL			

TABLE 2A

**Harrison Street Garage - Hydraulic Lift and Sump Areas
Summary of Laboratory Results of Soil samples**

TPH/BTEX (mg/Kg)

Sample I.D	TPH - G	TPH - D	Benzene	Toluene	Ethyl Benzene	Xylenes
B13-5'	8.32	1.63	LDL	.068	1.23	LDL
B13-15'	135.0	LDL	NT	.71	NT	8.85
B14-5'	LDL	LDL	LDL	NT	NT	NT
B14-15'	2.5	17.3	NT	NT	LDL	NT

TABLE 2B

Waste Metals - CAM - 17 (mg/Kg)

Metals	B13-5'	B13-15'	B14-5'	B14-15'	B15-5'	B15-15'	B16-5	B16-15'
Antimony	15.5	11.1	12.3	14.1	12.7	17.1	17.5	14.4
Arsenic	47.3	27.4	27.5	32.7	25.4	36.0	41.8	26.0
Barium	67.4	59.1	52.9	68.5	69.4	59.5	72.6	40.1
Beryllium	LDL	LDL	LDL	LDL	0.21	0.19	0.27	0.21
Cadmium	LDL	1.1	LDL	0.95	1.03	0.93	1.11	0.83
Chromium	56.7	54.0	33.9	48.8	37.6	45.6	51.0	59.1
Cobalt	9.34	8.69	6.32	6.86	6.72	6.76	11.1	8.59
Copper	LDL	10.3	LDL	8.53	8.25	8.87	9.29	7.31
Lead	17.4	13.8	11.2	13.2	26.6	16.7	14.3	10.2
Mercury	45.4	35.5	28.1	32.8	29.4	33.2	44.9	34.7
Molybdenum	19.4	18.7	15.7	18.0	18.9	30.0	34.7	24.9
Nickel	46.1	128.4	39.4	367.2	56.6	72.3	60.3	48.4
Selenium	21.9	15.5	12.3	15.3	9.02	15.5	15.2	8.81
Silver	LDL	LDL	LDL	LDL	4.97	4.51	4.51	4.92
Thallium	17.5	19.9	12.8	11.8	8.46	12.3	17.4	14.8
Vanadium	34.8	41.9	28.9	29.7	33.0	30.9	41.8	38.2
Zinc	24.8	24.4	18.7	26.28.7	23.5	25.3	27.1	18.8

TABLE 2C

Polychlorinated Biphenyls (PCB's) (mg/Kg)

Compound	B13-5'	B13-15'	B14-5'	B14-15'
Arochlor 1242 (PCB)	LDL	LDL	LDL	LDL
Arochlor 1254 (PCB)	LDL	LDL	LDL	LDL
Arochlor 1221 (PCB)	LDL	LDL	LDL	LDL
Arochlor 1232 (PCB)	LDL	LDL	LDL	LDL
Arochlor 1248 (PCB)	LDL	LDL	LDL	LDL
Arochlor 1260 (PCB)	245.	LDL	LDL	LDL
Arochlor 1016 (PCB)	LDL	LDL	LDL	LDL

TABLE 3A

**Harrison Street Garage - Tank Area on Harrison Street Sidewalk
Summary of Laboratory Results of Soil Samples**

TPH/BTEX (mg/Kg)

Sample I.D	TPH-G	TPH-D	Benzene	Toluene	Ethyl Benzene	Xylene
B23-5'	2.5	26.0	LDL	.027	LDL	LDL
B23-10'	3.3	LDL	LDL	.034	LDL	LDL
B20-15'	2.5	LDL	LDL	.034	LDL	LDL
B22-5'	42.3	670.0	LDL	.113	LDL	2.13
B22-10'	1540.0	175.0	.987	11.7	1.67	2.88
B21-5'	1.9	15.7	LDL	.021	LDL	.026
B21-15'	2.1	16.7	LDL	.02	LDL	.01
B20-5'	2.0	22.7	LDL	.03	LDL	LDL
B19-5'	2.1	24.0	LDL	.03	LDL	0.01
B17-5'	2.5	28.0	LDL	LDL	LDL	.01

TABLE 3B

Waste Metals (CAM 17) (mg/Kg)

Compound	B20-15'	B17-5'	Compound	B20-15'	B17-5'
Arsenic	13.9	19.8	Mercury	2.48	3.56
Barium	32.5	39.9	Molybdenum	LDL	LDL
Beryllium	LDL	LDL	Nickel	224.8	LDL
Cadmium	LDL	LDL	Selenium	LDL	6.24
Chromium	23.2	30.1	Silver	0.57	0.92
Cobalt	3.59	5.73	Thallium	5.33	9.96
Copper	5.33	5.10	Vanadium	19.3	25.5
Lead	10.4	10.4	Zinc	18.1	17.7

TABLE 3C

Oil and Grease (mg/Kg)

Sample I.D	Concentration
B20-15'	35.2
B17-5'	39.1

TABLE 3D

**Harrison Street Garage - Tank and Dispenser Areas
Summary of Laboratory Results and Soil Samples**

Polychlorinated Biphenyls (PCB's) (mg/Kg)

Compound	B20-15'	B17-5'
Arochlor 1242 (PCB)	LDL	LDL
Arochlor 1254 (PCB)	LDL	LDL
Arochlor 1212 (PCB)	LDL	LDL
Arochlor 1232 (PCB)	LDL	LDL
Arochlor 1248 (PCB)	LDL	LDL
Arochlor 1260 (PCB)	LDL	LDL
Arochlor 1016 (PCB)	LDL	LDL

TABLE 3E

Chlorinated hydrocarbons (mg/Kg)

Compounds	B17-5'
Chloroethane	LDL
Bromomethane	LDL
Vinylchloride	LDL
Chloromethane	LDL
Methylene chloride	LDL
Trichlorofluoromethane	LDL
1,1-Dichloroethene	LDL
1,1-Dichloroethane	LDL
trans-1,2-Dichloroethene	LDL
Chloroform	LDL
1,2-Dichloroethane	LDL
1,1,1-Trichloroethane	LDL
Carbon tetrachloride	LDL
Bromodichloromethane	LDL
1,2-Dichloropropane	LDL
trans-1,3-Dichloropropene	LDL
1,1,2-Trichloroethane	LDL
Trichloroethene	LDL
Benzene	LDL
2-Chloroethylvinyl ether	LDL
Dibromochloromethane	LDL
cis-1,3-Dichloropropene	LDL
Bromoform	LDL
1,1,2,2-Tetrachloroethane	LDL
Tetrachloroethene	LDL
Toluene	LDL
Chlorobenzene	LDL
Ethylbenzene	LDL
1,3-Dichlorobenzene	LDL
1,2-Dichlorobenzene	LDL
1,4-Dichlorobenzene	LDL

TABLE 4A

Harrison Street Garage, 1432 - 1434 Harrison Street, Oakland, CA

Summary of Laboratory Results - Groundwater Samples
TPH/BTEX (ug/L)

Sample I.D	TPH-G	TPH-D	Benzene	Toluene	Ethyl Benzene	Xylene
B-13	60200	LDL	55.0	45.0	26.5	242
B-17	LDL	LDL	4.0	LDL	LDL	LDL
B-20	96	LDL	5.0	6.0	LDL	LDL
B-21	LDL	LDL	LDL	LDL	LDL	LDL
B-22	72.0	LDL	5.0	0.7	LDL	3.0
B-23	1020	LDL	5.0	3.0	2.0	7.9

TABLE 4B

Oil and Grease (ug/L)

Sample I.D	Concentration
B-13	9721

TABLE 4C

Total Lead (ug/L)

Sample I.D	Concentration (mg/L)
B-20	0.81
B-21	LDL
B-22	1.38
B-23	8.29

TABLE 4D

Waste Metals (CAM 17) (ug/L)

Compounds	B-17	Compounds	B-17
Antimony	LDL	Mercury	LDL
Arsenic	LDL	Molybdenum	LDL
Barium	LDL	Nickel	LDL
Beryllium	LDL	Selenium	LDL
Cadmium	LDL	Silver	LDL
Chromium	LDL	Thallium	LDL
Cobalt	LDL	Vanadium	LDL
Copper	LDL	Zinc	LDL
Lead	LDL		

TABLE 4E

Harrison Street Garage, Groundwater Samples Summary of Laboratory Results

Chlorinated Hydrocarbons (ug/L)

Compounds	B-17
Chloroethane	LDL
Bromoethane	LDL
Vinyl chloride	LDL
Chloromethane	LDL
Methylene chloride	LDL
Trichlorofluoromethane	LDL
1,1-Dichloroethene	LDL
1,1-Dichloroethane	LDL
trans-1,2-Dichloroethene	LDL
Chloroform	LDL
1,2-Dichloroethane	LDL
1,1,1-Trichloroethane	LDL
Carbon tetrachloride	LDL
Bromodichloromethane	24
1,2-Dichloropropane	LDL
trans-1,3-Dichloropropene	LDL
1,1,2-Trichloroethane	LDL
Trichloroethene	LDL
Benzene	LDL
2-Chloroethyl vinyl ether	LDL
Dibromochloromethane	LDL
cis-1,3-Dichloropropene	LDL
Bromoform	LDL
1,1,2,2-Tetrachloroethane	LDL
Tetrachloroethene	LDL
Toluene	LDL
Chlorobenzene	LDL
Ethylbenzene	LDL
1,3-Dichlorobenzene	LDL
1,2-Dichlorobenzene	LDL
1,4-Dichlorobenzene	LDL

DRILLING AND LITHOLOGIC LOG

BORING #1-8

PROJECT: Harrison Garage Oakland CLIENT: Alvin H. Bacharach, Inc.
 PROJECT #: AHBI-100801 TOTAL DEPTH OF HOLE: 2 Feet DIAM.: 1 1/2 Inches
 LOCATION: 1432 Harrison Street, Oakland, California INITIAL DEPTH - TO GRNDWATR: N/A
 DATE DRILLED: January 16, 1992 STATIC WATER LEVEL: _____
 SCREEN DIAMETER: N/A LENGTH: _____ SLOT SIZE: _____
 CASING DIAMETER: N/A LENGTH: _____ SAMPLERTYPE: Zero Contamination Sampler
 DRILLING CO. RGA, INC. DRILLING METHOD: Hollow Stem Auger
 LOGGED BY: Chris Wabuzoh REVIEWED BY: Ken Korford, CEG #505

CORE SAMPLE CONDITION LEGEND: UNDISTURBED DISTURBED NO RECOVERY

DESCRIPTION	DEPTH	USCS SYMBOL	SAMPLES			WELL CONSTR.	
			NUMBER	CONDITION	BLOWS	PIPE	FILL
SILTY SAND: Brown, about 40% silt; about 60% very fine to fine, hard, rounded to subrounded sand; none to low dry strength; none to low plasticity; moist; no odor; no reaction with HCL; OVA .2 ppm.	0	SM					
	5						
	10						
	15						
	20						
	25						

RG A, INC.

1260 45th STREET, EMERYVILLE, CALIFORNIA 94608-1028

415/547-7771

DRILLING AND LITHOLOGIC LOG

BORING #9

PROJECT: Harrison Garage Oakland CLIENT: Alvin H. Bacharach, Inc
 PROJECT #: AHBI - 100801 TOTAL DEPTH OF HOLE: 5 Feet DIAM.: 1 1/2 Inches
 LOCATION: 1432 Harrison Street, Oakland, California INITIAL DEPTH - TO GRNDWATR: N/A
 DATE DRILLED: January 22, 1992 STATIC WATER LEVEL: _____
 SCREEN DIAMETER: N/A LENGTH: _____ SLOT SIZE: _____
 CASING DIAMETER: N/A LENGTH: _____ SAMPLERTYPE: Zero Contamination Sampler
 DRILLING CO. RGA, INC DRILLING METHOD: Hollow Stem Auger
 LOGGED BY: Chris Wabuzoh REVIEWED BY: Ken Korford, CEG #505

CORE SAMPLE CONDITION LEGEND: UNDISTURBED DISTURBED NO RECOVERY

DESCRIPTION	DEPTH	USCS SYMBOL	SAMPLES			WELL CONSTR.	
			NUMBER	CONDI-TION	BLOWS	PIPE	FILL
SILTY SAND: Brown; about 60% very fine to fine, hard, subrounded to rounded sand; about 40% silt; none to low dry strength; no plasticity; no odor; moist; no reaction with HCL; OVA 0 ppm.	0						
	5	SM	B9-5'	<input checked="" type="checkbox"/>			
	10						
	15						
	20						
	25						

RG A, INC.

1260 45th STREET, EMERYVILLE, CALIFORNIA 94608-1028

415/547-7771

DRILLING AND LITHOLOGIC LOG

BORING #10

PROJECT: Harrison Garage Oakland CLIENT: Alvin H. Bacharach, Inc.
 PROJECT #: AHBI-100801 TOTAL DEPTH OF HOLE: 8 Feet DIAM.: 1 1/2 Inches
 LOCATION: 1432 Harrison Street, Oakland, California INITIAL DEPTH-TO GRNDWATR: N/A
 DATE DRILLED: January 22, 1992 STATIC WATER LEVEL: _____
 SCREEN DIAMETER: N/A LENGTH: _____ SLOT SIZE: _____
 CASING DIAMETER: N/A LENGTH: _____ SAMPLERTYPE: Zero Contamination Sampler
 DRILLING CO. RGA, INC. DRILLING METHOD: Hollow Stem Auger
 LOGGED BY: Chris Wabuzoh stem a REVIEWED BY: Ken Korford, CEG #505

CORE SAMPLE CONDITION LEGEND : UNDISTURBED DISTURBED NO RECOVERY

DESCRIPTION	DEPTH	USCS SYMBOL	SAMPLES			WELL CONSTR.	
			NUMBER	CONDITION	BLOWS	PIPE	FILL
SILTY SAND: Brown; about 60% very fine to fine, hard, subrounded to rounded sand; about 40% silt; none to low dry strength; no plasticity; no odor; moist; no reaction with HCL; OVA 0 ppm.	0	SM	B10-8'	<input checked="" type="checkbox"/>			
	1						
	2						
	3						
	4						
	5						
	6						
	7						
8							
9							
10							
11							
12							
13							
14							
15							
16							
17							
18							
19							
20							
21							
22							
23							
24							
25							

RG A, INC.

1260 45th STREET, EMERYVILLE, CALIFORNIA 94608-1028

415/547-7771

DRILLING AND LITHOLOGIC LOG

BORING #13

PROJECT: Harrison Garage Oakland CLIENT: Alvin H. Bacharach, Inc
 PROJECT #: AHBI-100801 TOTAL DEPTH OF HOLE: 25 Feet DIAM.: 1 1/2 Inches
 LOCATION: 1432 Harrison Street, Oakland, California INITIAL DEPTH - TO GRNDWATR: 15 Feet
 DATE DRILLED: January 21, 1992 STATIC WATER LEVEL: N/A
 SCREEN DIAMETER: N/A LENGTH: _____ SLOT SIZE: _____
 CASING DIAMETER: N/A LENGTH: _____ SAMPLERTYPE: Zero Contamination Sampler
 DRILLING CO. RGa, INC. DRILLING METHOD: Hollow Stem Auger
 LOGGED BY: Chris Wabuzoh REVIEWED BY: Ken Korford, CEG #505

CORE SAMPLE CONDITION LEGEND : UNDISTURBED DISTURBED NO RECOVERY

DESCRIPTION	DEPTH	USCS SYMBOL	SAMPLES			WELL CONSTR.	
			NUMBER	CONDI-TION	BLOWS	PIPE	FILL
SILTY SAND: Brown; about 60% very fine to fine, hard, subrounded to rounded sand; about 40% silt; low dry strength; none to low plasticity; moist; odor; no reaction with HCL; OVA 50 ppm.	0						
	5	SM	B13-5'				
CLAYEY SAND: Brown; about 60% very fine to fine, hard, subrounded to rounded sand; about 40% clay; low dry strength; low plasticity; moist; odor; no reaction with HCL; OVA 60 ppm.	10	SC	B13-10				
SANDY CLAY: Brown; about 40% very fine to fine, hard, rounded sand; about 60% clay; low to medium dry strength; low plasticity; wet; odor; no reaction with HCL; OVA 30 ppm.	15	CL	B13-15				
CLAYEY SAND: Brown; about 60% very fine to fine, hard, rounded sand; about 40% clay; low to medium dry strength; low plasticity; saturated; odor; no reaction with HCL; OVA 30 ppm.	20	SC	B13-20				
CLAYEY SAND: Same As Above. OVA 20 ppm.	25						

RGa, INC.

1260 45th STREET, EMERYVILLE, CALIFORNIA 94608-1028

415/547-7771

DRILLING AND LITHOLOGIC LOG

BORING #14

PROJECT: Harrison Garage Oakland CLIENT: Alvin H. Bacharach, Inc.
 PROJECT #: AHBI-100801 TOTAL DEPTH OF HOLE: 25 Feet DIAM.: 1 1/2 Inches
 LOCATION: 1432 Harrison Street, Oakland, California INITIAL DEPTH - TO GRNDWATR: 15 Feet
 DATE DRILLED: January 21, 1992 STATIC WATER LEVEL: N/A
 SCREEN DIAMETER: N/A LENGTH: _____ SLOT SIZE: _____
 CASING DIAMETER: N/A LENGTH: _____ SAMPLER TYPE: Zero Contamination Sampler
 DRILLING CO. RGA, INC. DRILLING METHOD: Hollow Stem Auger
 LOGGED BY: Chris Wabuzoh REVIEWED BY: Ken Korford, CEG #505

CORE SAMPLE CONDITION LEGEND : UNDISTURBED DISTURBED NO RECOVERY

DESCRIPTION	DEPTH	USCS SYMBOL	SAMPLES			WELL CONSTR.	
			NUMBER	CONDI-TION	BLOWS	PIPE	FILL
SILTY SAND: Brown; about 60% very fine to fine, hard, subrounded to rounded sand; about 40% silt; low dry strength; none to low plasticity; moist no odor; no reaction with HCL; OVA .4 ppm.	0						
	5	SM	B14-5'				
CLAYEY SAND: Brown; about 60% very fine to fine hard, subrounded to rounded sand; about 40% clay; low dry strength; low plasticity; moist; no odor; no reaction with HCL; OVA .3 ppm.	10	SC	B14-10				
SANDY CLAY: Brown; about 40% very fine to fine, hard, rounded sand; about 60% clay; low to medium dry strength; low plasticity; wet; no odor; no reaction with HCL; OVA .2 ppm.	15	CL	B14-15				
CLAYEY SAND: Brown; about 60% very fine to fine, hard, rounded sand; about 40% clay; low to medium dry strength; low to medium plasticity; saturated; no odor; no reaction with HCL; OVA .1 ppm.	20	SC					
CLAYE SAND: Same As Above	25	SC					

RG A, I N C.

1260 45th STREET, EMERYVILLE, CALIFORNIA 94608-1028 415/547-7771

DRILLING AND LITHOLOGIC LOG

BORING #15

PROJECT : Harrison Garage Oakland CLIENT: Alvin H. Bacharach, Inc.
 PROJECT #: AHBI - 100801 TOTAL DEPTH OF HOLE: 25 Feet DIAM.: 1 1/2 Inches
 LOCATION: 1432 Harrison Street, Oakland, California INITIAL DEPTH - TO GRNDWATR: 15 Feet
 DATE DRILLED: January 27, 1992 STATIC WATER LEVEL: N/A
 SCREEN DIAMETER: N/A LENGTH: _____ SLOT SIZE: _____
 CASING DIAMETER: N/A LENGTH: _____ SAMPLER TYPE: Zero Contamination Sampler
 DRILLING CO. RGA, INC DRILLING METHOD: Hollow Stem Auger
 LOGGED BY: Chris Wabuzoh REVIEWED BY: Ken Korford, CEG #505

CORE SAMPLE CONDITION LEGEND : UNDISTURBED DISTURBED NO RECOVERY

DESCRIPTION	DEPTH	USCS SYMBOL	SAMPLES			WELL CONSTR.	
			NUMBER	CONDI-TION	BLOWS	PIPE	FILL
SILTY SAND: Brown; about 60% very fine to fine, hard, subrounded to rounded; about 40% silt; low to medium dry strength; low plasticity; moist; no odor; no reaction with HCL; OVA .3 ppm.	0						
	5	SM	B15-5'	<input checked="" type="checkbox"/>			
CLAYEY SAND: Brown; about 60% very fine to fine, hard, subrounded to rounded; about 40% clay; low to medium dry strength; low plasticity; moist; no odor; no reaction with HCL; OVA .3 ppm.	10	SC	B15-10	<input checked="" type="checkbox"/>			
SANDY CLAY: Brown; about 40% very fine to fine, hard, rounded sand; about 60% clay; low to medium dry strength; low to medium plasticity; wet; no odor; no reaction with HCL; OVA .1 ppm.	15	CL	B15-15	<input checked="" type="checkbox"/>			
CLAYEY SAND: Brown; about 60% very fine, hard, rounded sand; about 40% clay; low to medium dry strength; low to medium plasticity; saturated; no odor; no reaction with HCL; OVA .1 ppm.	20	SC	B15-20	<input checked="" type="checkbox"/>			
CLAYEY SAND: Same As Above.	25	SC	B15-25				

RG A, INC.

1260 45th STREET, EMERYVILLE, CALIFORNIA 94608-1028

415/547-7771

DRILLING AND LITHOLOGIC LOG

BORING #16

PROJECT: Harrison Garage Oakland CLIENT: Alvin H. Bacharach, Inc.
 PROJECT #: AHBI - 100801 TOTAL DEPTH OF HOLE: 25 Feet DIAM. 1 1/2 Inches
 LOCATION: 1432 Harrison Street, Oakland, California INITIAL DEPTH - TO GRNDWATR: 15 Feet
 DATE DRILLED: January 30, 1992 STATIC WATER LEVEL: N/A
 SCREEN DIAMETER: N/A LENGTH: _____ SLOT SIZE: _____
 CASING DIAMETER: N/A LENGTH: _____ SAMPLERTYPE: Zero Contamination Sampler
 DRILLING CO. BGA, INC DRILLING METHOD: Hollow Stem Auger
 LOGGED BY: Chris Wabuzoh REVIEWED BY: Ken Korford

CORE SAMPLE CONDITION LEGEND : UNDISTURBED DISTURBED NO RECOVERY

DESCRIPTION	DEPTH	USCS SYMBOL	SAMPLES			WELL CONSTR.	
			NUMBER	CONDITION	BLOWS	PIPE	FILL
SILTY SAND: Brown; about 60% very fine to fine, hard, subrounded to rounded sand; about 40% clay; low to medium dry strength; low plasticity; moist; no odor; no reaction with HCL; OVA .3 ppm	0						
	5	SM	B16-5'	<input checked="" type="checkbox"/>			
CLAYEY SAND: Brown; about 60% very fine to fine, hard, subrounded to rounded sand; about 40% clay; low to medium dry strength; low plasticity, moist; no odor; no reaction with HCL; OVA .2 ppm.	10	SC	B16-10	<input checked="" type="checkbox"/>			
SANDY CLAY: Brown; about 40% very fine to fine, hard, rounded sand; about 60% clay; low to medium dry strength; low to medium plasticity; wet; no odor; no reaction with HCL; OVA .1 ppm.	15	CL	B16-15	<input checked="" type="checkbox"/>			
CLAYEY SAND: Brown; about 60% very fine, hard, rounded sand; about 40% clay; low to medium dry strength; low to medium plasticity; saturated; no odor; no reaction with HCL; OVA 0 ppm.	20	SC	B16-20	<input checked="" type="checkbox"/>			
CLAYEY SAND: Same As Above	25	SC	B16-25				

RG A, INC.

1260 45th STREET, EMERYVILLE, CALIFORNIA 94608-1028

415/547-7771

DRILLING AND LITHOLOGIC LOG

BORING #17

PROJECT : Harrison Garage Oakland CLIENT: Alvin H. Bacharach, Inc.
 PROJECT #: AHBI - 100801 TOTAL DEPTH OF HOLE: 5 Feet DIAM.: 1 1/2 Inches
 LOCATION: 1432 Harrison Street, Oakland, California INITIAL DEPTH - TO GRNDWATR: 4 Feet
 DATE DRILLED: January 30, 1992 STATIC WATER LEVEL: N/A
 SCREEN DIAMETER: N/A LENGTH: _____ SLOT SIZE: _____
 CASING DIAMETER: N/A LENGTH: _____ SAMPLERTYPE: Closed Spoon Sampler
 DRILLING CO. RGA, INC. DRILLING METHOD: Hollow Stem Auger
 LOGGED BY: Chris Wabuzoh REVIEWED BY: Ken Koford, CEG #505

CORE SAMPLE CONDITION LEGEND : UNDISTURBED DISTURBED NO RECOVERY

DESCRIPTION	DEPTH	USCS SYMBOL	SAMPLES			WELL CONSTR.	
			NUMBER	CONDI-TION	BLOWS	PIPE	FILL
CLAYEY SAND: Brown; about 60% very fine to fine, hard, rounded to subrounded sand; about 40% clay; low to medium dry strength; low plasticity; wet; no odor; no reaction with HCL; OVA 1 ppm. ▼	0						
	5	SC	B17-5	<input checked="" type="checkbox"/>			
	10						
	15						
	20						
	25						

RGA, INC.

1260 45th STREET, EMERYVILLE, CALIFORNIA 94608-1028

415/547-7771

DRILLING AND LITHOLOGIC LOG

BORING #19

PROJECT: Harrison Garage, Oakland CLIENT: Alvin H. Bacharach, Inc.
 PROJECT #: AHBI - 100801 TOTAL DEPTH OF HOLE: 5 Feet DIAM.: 1 1/2 Inches
 LOCATION: 1432 Harrison Street, Oakland, California INITIAL DEPTH - TO GRNDWATR: 5 Feet
 DATE DRILLED: February 3, 1992 STATIC WATER LEVEL: N/A
 SCREEN DIAMETER: N/A LENGTH: _____ SLOT SIZE: _____
 CASING DIAMETER: N/A LENGTH: _____ SAMPLERTYPE: Closed Spoon Sampler
 DRILLING CO. BGA INC. DRILLING METHOD: Hollow Stem Auger
 LOGGED BY: Chris Nwabuzoh REVIEWED BY: Ken Korford, CEG #505

CORE SAMPLE CONDITION LEGEND : UNDISTURBED DISTURBED NO RECOVERY

DESCRIPTION	DEPTH	USCS SYMBOL	SAMPLES			WELL CONSTR.	
			NUMBER	CONDI-TION	BLOWS	PIPE	FILL
CLAYEY SAND: Brown; about 60% very fine to fine, hard, subrounded to rounded sand; about 40% clay; low to medium dry strength; low plasticity; wet; no odor; no reaction with HCL; OVA .3 ppm.	0	SC	B19-5	<input checked="" type="checkbox"/>			
	5						
	10						
	15						
	20						
	25						

RG, INC.

1260 45th STREET, EMERYVILLE, CALIFORNIA 94608-1028

415/547-7771

DRILLING AND LITHOLOGIC LOG

BORING # 20

PROJECT: Harrison Garage, Oakland CLIENT: Alvin H. Bacharach, Inc
 PROJECT #: AHBI-100801 TOTAL DEPTH OF HOLE: 5 Feet DIAM.: 1 1/2 Inhes
 LOCATION: 1432 Harrison Street, Oakland, California INITIAL DEPTH - TO GRNDWATR: 5 Feet
 DATE DRILLED: February 3, 1992 STATIC WATER LEVEL: _____
 SCREEN DIAMETER: N/A LENGTH: _____ SLOT SIZE: _____
 CASING DIAMETER: N/A LENGTH: _____ SAMPLERTYPE: Closed Spoom Sampler
 DRILLING CO. RGA, INC DRILLING METHOD: Hollow Stem Auger
 LOGGED BY: Chris Nwabuzoh REVIEWED BY: Ken Korford, CEG #505

CORE SAMPLE CONDITION LEGEND : UNDISTURBED DISTURBED NORECOVERY

DESCRIPTION	DEPTH	USCS SYMBOL	SAMPLES			WELL CONSTR.	
			NUMBER	CONDI-TION	BLOWS	PIPE	FILL
CLAYEY SAND: Brown; about 60% of fine, hard, subrounded to rounded sand; about 40% clay; low to medium dry strength; low plasticity, wet, no odor; no reaction with HCL; OVA .5 ppm.	0	SC	B20-5				
	5						
	10						
	15						
	20						
	25						

RG A, INC.

1260 45th STREET, EMERYVILLE, CALIFORNIA 94608-1028

415/547-7771

DRILLING AND LITHOLOGIC LOG

BORING #21

PROJECT: Harrison Garage Oakland CLIENT: Alvin H. Bacharach, Inc.
 PROJECT #: AHBI-100801 TOTAL DEPTH OF HOLE: 15 Feet DIAM.: 1 1/2 Inches
 LOCATION: 1432 Harrison Street, Oakland, California INITIAL DEPTH - TO GRNDWATR: 5 Feet
 DATE DRILLED: February 5, 1992 STATIC WATER LEVEL: N/A
 SCREEN DIAMETER: N/A LENGTH: _____ SLOT SIZE: _____
 CASING DIAMETER: N/A LENGTH: _____ SAMPLER TYPE: Zero Contamination Sampler
 DRILLING CO. RGA, INC. DRILLING METHOD: Hollow Stem Auger
 LOGGED BY: Chris Wabuzoh REVIEWED BY: Ken Korford, CEG #505

CORE SAMPLE CONDITION LEGEND : UNDISTURBED DISTURBED NO RECOVERY

DESCRIPTION	DEPTH	USCS SYMBOL	SAMPLES			WELL CONSTR.	
			NUMBER	CONDI-TION	BLOWS	PIPE	FILL
CLAYEY SAND: Brown; about 70% fine to coarse, hard, subrounded to rounded sand; about 30% clay; low dry strength; none to low plasticity; saturated; no odor; no reaction with HCL; OVA 0 ppm.	0						
	5	SC	B21-5'	<input checked="" type="checkbox"/>			
CLAYEY SAND: Same As Above.	10	SC	B21-10	<input checked="" type="checkbox"/>			
SILTY SAND: Brown; about 60% very fine to fine, hard subrounded to rounded sand; about 40% silt; low dry strength; none to low plasticity; saturated; no odor; no reaction with HCL; OVA 0 ppm.	15	SM	B21-15	<input checked="" type="checkbox"/>			
	20						
	25						

RG A, INC.

1260 45th STREET, EMERYVILLE, CALIFORNIA 94608-1028

415/547-7771

DRILLING AND LITHOLOGIC LOG

BORING #22

PROJECT: Harrison Garage Oakland CLIENT: Alvin H. Bacharach, Inc.
 PROJECT #: AHBI - 100801 TOTAL DEPTH OF HOLE: 10 Feet DIAM.: 1 1/2 Inches
 LOCATION: 1432 Harrison Street, Oakland, California INITIAL DEPTH - TO GRNDWATR: 5 Feet
 DATE DRILLED: February 5, 1992 STATIC WATER LEVEL: N/A
 SCREEN DIAMETER: N/A LENGTH: _____ SLOT SIZE: _____
 CASING DIAMETER: N/A LENGTH: _____ SAMPLERTYPE: Zero Contamination Samplerr
 DRILLING CO. RGA, INC. DRILLING METHOD: Hollow Stem Auger
 LOGGED BY: Chris Wabuzoh REVIEWED BY: Ken Korford, CEG #505

CORE SAMPLE CONDITION LEGEND : UNDISTURBED DISTURBED NO RECOVERY

DESCRIPTION	DEPTH	USCS SYMBOL	SAMPLES			WELL CONSTR.	
			NUMBER	CONDI-TION	BLOWS	PIPE	FILL
CLAYEY SAND: Brown; about 70% very fine to fine, hard, subrounded to rounded sand; about 30% clay; low dry strength; none to low plasticity; saturated; no odor; no reaction with HCL; OVA 5 ppm.	0						
	5	SC	B22-5'	<input checked="" type="checkbox"/>			
CLAYEY SAND: Same As Above. OVA 2 ppm.	10	SC	B22-10'	<input checked="" type="checkbox"/>			
	15						
	20						
	25						

RG A, INC.

1260 45th STREET, EMERYVILLE, CALIFORNIA 94608-1028

415/547-7771

DRILLING AND LITHOLOGIC LOG

BORING #23

PROJECT: Harrison Garage Oakland CLIENT: Alvin H. Bacharach, Inc.
 PROJECT #: AHBI - 100801 TOTAL DEPTH OF HOLE: 10 Feet DIAM.: 1 1/2 Inches
 LOCATION: 1432 Harrison Street, Oakland, California INITIAL DEPTH - TO GRNDWATR: 5 Feet
 DATE DRILLED: February 5, 1992 STATIC WATER LEVEL: N/A
 SCREEN DIAMETER: N/A LENGTH: _____ SLOT SIZE: _____
 CASING DIAMETER: N/A LENGTH: _____ SAMPLERTYPE: Zero Contamination Sampler
 DRILLING CO. RGA, INC DRILLING METHOD: Hollow Stem Auger
 LOGGED BY: Chris Wabuzoh REVIEWED BY: Ken Korford, CEG #505

CORE SAMPLE CONDITION LEGEND : UNDISTURBED DISTURBED NORECOVERY

DESCRIPTION	DEPTH	USCS SYMBOL	SAMPLES			WELL CONSTR.	
			NUMBER	CONDI-TION	BLOWS	PIPE	FILL
CLAYEY SAND: Brown; about 70% very fine to fine, hard, subrounded to rounded sand; about 30% clay; low dry strength; none to low plasticity; saturated; slight odor; no reaction with HCL; OVA 20 ppm. CLAYEY SAND: Same As Above. OVA 10 ppm.	0						
	5	SC	B23-5	<input checked="" type="checkbox"/>			
	10	SC	B23-10	<input checked="" type="checkbox"/>			
	15						
	20						
	25						

RG A, INC.

1260 45th STREET, EMERYVILLE, CALIFORNIA 94608-1028

415/547-7771

Environmental Data Resources
September 13, 2007
Certified Sanborn Map Report

APPENDIX F
EDR Neighboring Sites



EDR® Environmental
Data Resources Inc

The EDR Radius Map with GeoCheck®

**540188-85 - Oakland, CA
1432 Harrison St.
Oakland, CA 94612**

Inquiry Number: 2027578.2s

September 12, 2007

The Standard in Environmental Risk Information

**440 Wheelers Farms Road
Milford, Connecticut 06461**

Nationwide Customer Service

**Telephone: 1-800-352-0050
Fax: 1-800-231-6802
Internet: www.edrnet.com**

TABLE OF CONTENTS

<u>SECTION</u>	<u>PAGE</u>
Executive Summary.....	ES1
Overview Map.....	2
Detail Map.....	3
Map Findings Summary.....	4
Map Findings.....	6
Orphan Summary.....	302
EPA Waste Codes.....	EPA-1
Government Records Searched/Data Currency Tracking.....	GR-1
 <u>GEOCHECK ADDENDUM</u>	
Physical Setting Source Addendum.....	A-1
Physical Setting Source Summary.....	A-2
Physical Setting SSURGO Soil Map.....	A-7
Physical Setting Source Map.....	A-10
Physical Setting Source Map Findings.....	A-11
Physical Setting Source Records Searched.....	A-23

Thank you for your business.
Please contact EDR at 1-800-352-0050
with any questions or comments.

Disclaimer - Copyright and Trademark Notice

This Report contains certain information obtained from a variety of public and other sources reasonably available to Environmental Data Resources, Inc. It cannot be concluded from this Report that coverage information for the target and surrounding properties does not exist from other sources. **NO WARRANTY EXPRESSED OR IMPLIED, IS MADE WHATSOEVER IN CONNECTION WITH THIS REPORT. ENVIRONMENTAL DATA RESOURCES, INC. SPECIFICALLY DISCLAIMS THE MAKING OF ANY SUCH WARRANTIES, INCLUDING WITHOUT LIMITATION, MERCHANTABILITY OR FITNESS FOR A PARTICULAR USE OR PURPOSE. ALL RISK IS ASSUMED BY THE USER. IN NO EVENT SHALL ENVIRONMENTAL DATA RESOURCES, INC. BE LIABLE TO ANYONE, WHETHER ARISING OUT OF ERRORS OR OMISSIONS, NEGLIGENCE, ACCIDENT OR ANY OTHER CAUSE, FOR ANY LOSS OF DAMAGE, INCLUDING, WITHOUT LIMITATION, SPECIAL, INCIDENTAL, CONSEQUENTIAL, OR EXEMPLARY DAMAGES. ANY LIABILITY ON THE PART OF ENVIRONMENTAL DATA RESOURCES, INC. IS STRICTLY LIMITED TO A REFUND OF THE AMOUNT PAID FOR THIS REPORT.** Purchaser accepts this Report "AS IS". Any analyses, estimates, ratings, environmental risk levels or risk codes provided in this Report are provided for illustrative purposes only, and are not intended to provide, nor should they be interpreted as providing any facts regarding, or prediction or forecast of, any environmental risk for any property. Only a Phase I Environmental Site Assessment performed by an environmental professional can provide information regarding the environmental risk for any property. Additionally, the information provided in this Report is not to be construed as legal advice.

Copyright 2007 by Environmental Data Resources, Inc. All rights reserved. Reproduction in any media or format, in whole or in part, of any report or map of Environmental Data Resources, Inc., or its affiliates, is prohibited without prior written permission.

EDR and its logos (including Sanborn and Sanborn Map) are trademarks of Environmental Data Resources, Inc. or its affiliates. All other trademarks used herein are the property of their respective owners.

EXECUTIVE SUMMARY

A search of available environmental records was conducted by Environmental Data Resources, Inc (EDR). The report was designed to assist parties seeking to meet the search requirements of EPA's Standards and Practices for All Appropriate Inquiries (40 CFR Part 312), the ASTM Standard Practice for Environmental Site Assessments (E 1527-05) or custom requirements developed for the evaluation of environmental risk associated with a parcel of real estate.

TARGET PROPERTY INFORMATION

ADDRESS

1432 HARRISON ST.
OAKLAND, CA 94612

COORDINATES

Latitude (North): 37.803200 - 37° 48' 11.5"
Longitude (West): 122.267100 - 122° 16' 1.6"
Universal Transverse Mercator: Zone 10
UTM X (Meters): 564520.3
UTM Y (Meters): 4184027.8
Elevation: 38 ft. above sea level

USGS TOPOGRAPHIC MAP ASSOCIATED WITH TARGET PROPERTY

Target Property Map: 37122-G3 OAKLAND WEST, CA
Most Recent Revision: 1980

East Map: 37122-G2 OAKLAND EAST, CA
Most Recent Revision: 1980

TARGET PROPERTY SEARCH RESULTS

The target property was identified in the following records. For more information on this property see page 6 of the attached EDR Radius Map report:

<u>Site</u>	<u>Database(s)</u>	<u>EPA ID</u>
HARRISON ST. GARAGE 1432 HARRISON ST OAKLAND, CA 94612	HIST UST	N/A
ALVIN BACHARACH 1428-1434 HARRISON STREET OAKLAND, CA 94612	HAZNET	N/A
DAVES SERVICE GARAGE 1432 HARRISON ST OAKLAND, CA	EDR Historical Auto Stations	N/A
1X BORSUK, BARBARA 1432 HARRISON STREET OAKLAND, CA 92101	HAZNET EMI	N/A
MARK BORSUK ESQ 1432 HARRISON STREET OAKLAND, CA 94612	FINDS	110021102698

EXECUTIVE SUMMARY

ROYS AUTO BODY
1432 HARRISON ST
OAKLAND, CA 94612

RCRA-SQG
FINDS
HAZNET

CAD982039125

HARRISON STREET GARAGE
1432 HARRISON ST
OAKLAND, CA 94612

HIST UST

N/A

A BACHARACH TR & B BORSUK
1432 HARRISON ST
OAKLAND, CA 94612

LUST
Facility Status: Preliminary site assessment underway

N/A

Cortese
CA FID UST
CS
SWEEPS UST

DATABASES WITH NO MAPPED SITES

No mapped sites were found in EDR's search of available ("reasonably ascertainable ") government records either on the target property or within the search radius around the target property for the following databases:

FEDERAL RECORDS

NPL	National Priority List
Proposed NPL	Proposed National Priority List Sites
Delisted NPL	National Priority List Deletions
NPL LIENS	Federal Superfund Liens
CERCLIS	Comprehensive Environmental Response, Compensation, and Liability Information System
RCRA-TSDF	Resource Conservation and Recovery Act Information
ERNS	Emergency Response Notification System
HMIRS	Hazardous Materials Information Reporting System
US ENG CONTROLS	Engineering Controls Sites List
US INST CONTROL	Sites with Institutional Controls
DOD	Department of Defense Sites
CONSENT	Superfund (CERCLA) Consent Decrees
ROD	Records Of Decision
UMTRA	Uranium Mill Tailings Sites
ODI	Open Dump Inventory
TRIS	Toxic Chemical Release Inventory System
TSCA	Toxic Substances Control Act
FTTS	FIFRA/ TSCA Tracking System - FIFRA (Federal Insecticide, Fungicide, & Rodenticide Act)/TSCA (Toxic Substances Control Act)
SSTS	Section 7 Tracking Systems
HIST FTTS	FIFRA/TSCA Tracking System Administrative Case Listing
ICIS	Integrated Compliance Information System
LUCIS	Land Use Control Information System
RADINFO	Radiation Information Database
LIENS 2	CERCLA Lien Information

EXECUTIVE SUMMARY

DOT OPS.....	Incident and Accident Data
US CDL.....	Clandestine Drug Labs
PADS.....	PCB Activity Database System
MLTS.....	Material Licensing Tracking System
MINES.....	Mines Master Index File
RAATS.....	RCRA Administrative Action Tracking System

STATE AND LOCAL RECORDS

HIST Cal-Sites.....	Historical Calsites Database
CA BOND EXP. PLAN.....	Bond Expenditure Plan
SCH.....	School Property Evaluation Program
Toxic Pits.....	Toxic Pits Cleanup Act Sites
CA WDS.....	Waste Discharge System
WMUDS/SWAT.....	Waste Management Unit Database
SWRCY.....	Recycler Database
LIENS.....	Environmental Liens Listing
CHMIRS.....	California Hazardous Material Incident Report System
DEED.....	Deed Restriction Listing
VCP.....	Voluntary Cleanup Program Properties
WIP.....	Well Investigation Program Case List
CDL.....	Clandestine Drug Labs
RESPONSE.....	State Response Sites
HAULERS.....	Registered Waste Tire Haulers Listing

TRIBAL RECORDS

INDIAN RESERV.....	Indian Reservations
INDIAN LUST.....	Leaking Underground Storage Tanks on Indian Land
INDIAN UST.....	Underground Storage Tanks on Indian Land

SURROUNDING SITES: SEARCH RESULTS

Surrounding sites were identified in the following databases.

Elevations have been determined from the USGS Digital Elevation Model and should be evaluated on a relative (not an absolute) basis. Relative elevation information between sites of close proximity should be field verified. Sites with an elevation equal to or higher than the target property have been differentiated below from sites with an elevation lower than the target property. Page numbers and map identification numbers refer to the EDR Radius Map report where detailed data on individual sites can be reviewed.

Sites listed in ***bold italics*** are in multiple databases.

Unmappable (orphan) sites are not considered in the foregoing analysis.

FEDERAL RECORDS

CERCLIS-NFRAP: Archived sites are sites that have been removed and archived from the inventory of CERCLIS sites. Archived status indicates that, to the best of EPA's knowledge, assessment at a site has been completed and that EPA has determined no further steps will be taken to list this site on the National Priorities List (NPL), unless information indicates this decision was not appropriate or other considerations require a recommendation for listing at a later time. This decision does not necessarily mean that there is no hazard

EXECUTIVE SUMMARY

associated with a given site; it only means that, based upon available information, the location is not judged to be a potential NPL site.

A review of the CERC-NFRAP list, as provided by EDR, and dated 06/21/2007 has revealed that there is 1 CERC-NFRAP site within approximately 0.5 miles of the target property.

<u>Lower Elevation</u>	<u>Address</u>	<u>Dist / Dir</u>	<u>Map ID</u>	<u>Page</u>
ALAMEDA, CITY OF BUR ELECTRICT	2004 WEBSTER ST	1/4 - 1/2N	191	180

CORRACTS: CORRACTS is a list of handlers with RCRA Corrective Action Activity. This report shows which nationally-defined corrective action core events have occurred for every handler that has had corrective action activity.

A review of the CORRACTS list, as provided by EDR, and dated 06/26/2007 has revealed that there are 2 CORRACTS sites within approximately 1 mile of the target property.

<u>Lower Elevation</u>	<u>Address</u>	<u>Dist / Dir</u>	<u>Map ID</u>	<u>Page</u>
FRANCIS PLATING OF OAKLAND INC	785 7TH ST	1/2 - 1 WSW	BM268	258
SAFETY KLEEN CORP 7 178 01	404 MARKET ST	1/2 - 1 W	280	275

RCRAInfo: RCRAInfo is EPA's comprehensive information system, providing access to data supporting the Resource Conservation and Recovery Act (RCRA) of 1976 and the Hazardous and Solid Waste Amendments (HSWA) of 1984. RCRAInfo replaces the data recording and reporting abilities of the Resource Conservation and Recovery Information System(RCRIS). The database includes selective information on sites which generate, transport, store, treat and/or dispose of hazardous waste as defined by the Resource Conservation and Recovery Act (RCRA). Conditionally exempt small quantity generators (CESQGs) generate less than 100 kg of hazardous waste, or less than 1 kg of acutely hazardous waste per month. Small quantity generators (SQGs) generate between 100 kg and 1,000 kg of hazardous waste per month Large quantity generators generate over 1,000 kilograms (kg) of hazardous waste, or over 1 kg of acutely hazardous waste per month. Transporters are individuals or entities that move hazardous waste from the generator offsite to a facility that can recycle, treat, store, or dispose of the waste. TSDFs treat, store, or dispose of the waste.

A review of the RCRA-LQG list, as provided by EDR, and dated 06/13/2006 has revealed that there are 2 RCRA-LQG sites within approximately 0.25 miles of the target property.

<u>Equal/Higher Elevation</u>	<u>Address</u>	<u>Dist / Dir</u>	<u>Map ID</u>	<u>Page</u>
OAKLAND NATIONAL ENGRAVING CO	307 10TH ST	1/8 - 1/4SSW	157	138

<u>Lower Elevation</u>	<u>Address</u>	<u>Dist / Dir</u>	<u>Map ID</u>	<u>Page</u>
PACIFIC BELL	1587 FRANKLIN STREET	1/8 - 1/4NNW	AH113	100

RCRAInfo: RCRAInfo is EPA's comprehensive information system, providing access to data supporting the Resource Conservation and Recovery Act (RCRA) of 1976 and the Hazardous and Solid Waste Amendments (HSWA) of 1984. RCRAInfo replaces the data recording and reporting abilities of the Resource Conservation and Recovery Information System(RCRIS). The database includes selective information on sites which generate, transport, store, treat and/or dispose of hazardous waste as defined by the Resource Conservation and Recovery Act (RCRA). Conditionally exempt small quantity generators (CESQGs) generate less than 100 kg of hazardous waste, or less than 1 kg of acutely hazardous waste per month. Small quantity generators (SQGs) generate between 100 kg and 1,000 kg of hazardous waste per month Large quantity generators generate over

EXECUTIVE SUMMARY

1,000 kilograms (kg) of hazardous waste, or over 1 kg of acutely hazardous waste per month. Transporters are individuals or entities that move hazardous waste from the generator offsite to a facility that can recycle, treat, store, or dispose of the waste. TSDFs treat, store, or dispose of the waste.

A review of the RCRA-SQG list, as provided by EDR, and dated 06/13/2006 has revealed that there are 10 RCRA-SQG sites within approximately 0.25 miles of the target property.

<u>Equal/Higher Elevation</u>	<u>Address</u>	<u>Dist / Dir</u>	<u>Map ID</u>	<u>Page</u>
COCHRAN & CELLI	301 12TH ST	0 - 1/8 SSW	O53	41
PACIFIC BELL	1519 FRANKLIN STREET	1/8 - 1/4NW	U72	53
OAKLAND STATE BUILDING 601	1111 JACKSON STREET	1/8 - 1/4S	Y86	73
TRIBUNE TOWER COMPLEX	409 13TH ST	1/8 - 1/4 W	AA91	79
WALGREENS 2393	1330 BROADWAY	1/8 - 1/4 WNW	AN145	126
CLOROX CO	1221 BROADWAY	1/8 - 1/4 W	165	140
<u>Lower Elevation</u>	<u>Address</u>	<u>Dist / Dir</u>	<u>Map ID</u>	<u>Page</u>
AT&T OAKLAND MAIN	1587/1601 FRANKLIN ST	1/8 - 1/4NNW	AH114	108
PACIFIC BELL	125 TWELVE ST	1/8 - 1/4SSE	AJ128	116
WORLD SAVINGS CTR	1901 HARRISON ST	1/8 - 1/4NNE	AL136	121
I D G ARCHITECTS	1730 FRANKLIN ST RM 300	1/8 - 1/4NNW	169	142

FUDS: The Listing includes locations of Formerly Used Defense Sites Properties where the US Army Corps Of Engineers is actively working or will take necessary cleanup actions.

A review of the FUDS list, as provided by EDR, and dated 12/31/2005 has revealed that there are 2 FUDS sites within approximately 1 mile of the target property.

<u>Equal/Higher Elevation</u>	<u>Address</u>	<u>Dist / Dir</u>	<u>Map ID</u>	<u>Page</u>
OAKLAND AREA HOSPITAL SITE		0 - 1/8 SSE	I36	26
<u>Lower Elevation</u>	<u>Address</u>	<u>Dist / Dir</u>	<u>Map ID</u>	<u>Page</u>
NAVAL INDUSTRIAL REPAIR FACILI		1/2 - 1 S	285	296

US BROWNFIELDS: The EPA's listing of Brownfields properties addressed by Cooperative Agreement Recipients and Brownfields properties addressed by Targeted Brownfields Assessments

A review of the US BROWNFIELDS list, as provided by EDR, and dated 06/20/2007 has revealed that there are 41 US BROWNFIELDS sites within approximately 0.5 miles of the target property.

<u>Lower Elevation</u>	<u>Address</u>	<u>Dist / Dir</u>	<u>Map ID</u>	<u>Page</u>
540 18TH STREET	540 18TH STREET	1/4 - 1/2NW	AW196	191
521 19TH STREET	521 19TH STREET	1/4 - 1/2NNW	198	194
550 18TH STREET	550 18TH STREET	1/4 - 1/2NW	AW204	202
1901 TELEGRAPH AVENUE	1901 TELEGRAPH AVENUE	1/4 - 1/2NNW	BA207	203
1911 TELEGRAPH AVENUE	1911 TELEGRAPH AVENUE	1/4 - 1/2NNW	BA209	206
568 18TH STREET	568 18TH STREET	1/4 - 1/2NW	BC212	207
1800 SAN PABLO AVENUE	1800 SAN PABLO AVENUE	1/4 - 1/2NW	BC213	208
1810 SAN PABLO AVENUE	1810 SAN PABLO AVENUE	1/4 - 1/2NW	BC216	211
538 WILLIAM STREET PARCEL 4	538 WILLIAM STREET	1/4 - 1/2NNW	BD217	212
538 WILLIAM STREET PARCEL 006	538 WILLIAM STREET	1/4 - 1/2NNW	BD218	212
538 WILLIAM STREET PARCEL 005	538 WILLIAM STREET	1/4 - 1/2NNW	BD219	213
538 WILLIAM STREET PARCEL 003	538 WILLIAM STREET	1/4 - 1/2NNW	BD220	214

EXECUTIVE SUMMARY

<u>Lower Elevation</u>	<u>Address</u>	<u>Dist / Dir</u>	<u>Map ID</u>	<u>Page</u>
544 WILLIAM STREET	544 WILLIAM STREET	1/4 - 1/2 NNW	BD221	215
1818 SAN PABLO AVENUE	1818 SAN PABLO AVENUE	1/4 - 1/2 NW	BC222	215
563 19TH STREET	563 19TH STREET	1/4 - 1/2 NW	BE223	216
550 WILLIAM STREET	550 WILLIAM STREET	1/4 - 1/2 NNW	BD224	217
1975 TELEGRAPH AVENUE	1975 TELEGRAPH AVENUE	1/4 - 1/2 NNW	BF227	219
1830 SAN PABLO AVENUE	1830 SAN PABLO AVENUE	1/4 - 1/2 NW	BC229	223
562 WILLIAM STREET PARCEL 009	562 WILLIAM STREET	1/4 - 1/2 NNW	BD230	224
562 WILLIAM STREET PARCEL 010	562 WILLIAM STREET	1/4 - 1/2 NNW	BD231	225
566 WILLIAM STREET	566 WILLIAM STREET	1/4 - 1/2 NNW	BD232	226
571 19TH STREET	571 19TH STREET	1/4 - 1/2 NW	BE233	226
1840 SAN PABLO AVENUE	1840 SAN PABLO AVENUE	1/4 - 1/2 NW	BG234	227
570 WILLIAM STREET	570 WILLIAM STREET	1/4 - 1/2 NNW	BH235	228
574 WILLIAM STREET	574 WILLIAM STREET	1/4 - 1/2 NNW	BH236	228
584 WILLIAM STREET	584 WILLIAM STREET	1/4 - 1/2 NNW	BH240	233
588 WILLIAM STREET	588 WILLIAM STREET	1/4 - 1/2 NNW	BH242	235
592 WILLIAM STREET	592 WILLIAM STREET	1/4 - 1/2 NNW	BH245	241
596 WILLIAM STREET	596 WILLIAM STREET	1/4 - 1/2 NNW	BH246	242
602 WILLIAM STREET	602 WILLIAM STREET	1/4 - 1/2 NNW	BJ248	243
529 20TH STREET PARCEL 039	529 20TH STREET	1/4 - 1/2 NNW	BK249	244
529 20TH STREET PARCEL 044	529 20TH STREET	1/4 - 1/2 NNW	BK250	245
529 20TH STREET PARCEL 043	529 20TH STREET	1/4 - 1/2 NNW	BK251	245
529 20TH STREET PARCEL 042	529 20TH STREET	1/4 - 1/2 NNW	BK252	246
529 20TH STREET PARCEL 040	529 20TH STREET	1/4 - 1/2 NNW	BK253	247
529 20TH STREET PARCEL 041	529 20TH STREET	1/4 - 1/2 NNW	BK254	248
608 WILLIAM STREET	608 WILLIAM STREET	1/4 - 1/2 NNW	BJ255	248
610 WILLIAM STREET	610 WILLIAM STREET	1/4 - 1/2 NNW	BJ256	249
565 20TH STREET	565 20TH STREET	1/4 - 1/2 NNW	BL259	252
1920 SAN PABLO AVENUE	1920 SAN PABLO AVENUE	1/4 - 1/2 NW	260	253
571 20TH STREET	571 20TH STREET	1/4 - 1/2 NNW	BL261	254

STATE AND LOCAL RECORDS

SWF/LF: The Solid Waste Facilities/Landfill Sites records typically contain an inventory of solid waste disposal facilities or landfills in a particular state. The data come from the Integrated Waste Management Board's Solid Waste Information System (SWIS) database.

A review of the SWF/LF list, as provided by EDR, and dated 06/11/2007 has revealed that there is 1 SWF/LF site within approximately 0.5 miles of the target property.

<u>Equal/Higher Elevation</u>	<u>Address</u>	<u>Dist / Dir</u>	<u>Map ID</u>	<u>Page</u>
NORTH PORT OF OAKLAND REFUSE D	SE CORNER DOOLITTLE RD	1/8 - 1/4 S	127	115

CORTESE: This database identifies public drinking water wells with detectable levels of contamination, hazardous substance sites selected for remedial action, sites with known toxic material identified through the abandoned site assessment program, sites with USTs having a reportable release and all solid waste disposal facilities from which there is known migration. The source is the California Environmental Protection Agency/Office of Emergency Information.

A review of the Cortese list, as provided by EDR, and dated 04/01/2001 has revealed that there are 53

EXECUTIVE SUMMARY

Cortese sites within approximately 0.5 miles of the target property.

<u>Equal/Higher Elevation</u>	<u>Address</u>	<u>Dist / Dir</u>	<u>Map ID</u>	<u>Page</u>
GERMAN AUTOCRAFT	301 14TH	0 - 1/8 SW	B12	15
CHEVRON	301 14TH ST E	0 - 1/8 SW	B13	16
TIME OIL COMPANY	255 14TH	0 - 1/8 SSE	C21	21
QUALITY TUNE UP	246 14TH ST	0 - 1/8 SE	E22	22
YWCA OF OAKLAND	1515 WEBSTER ST	0 - 1/8 NW	37	27
ALLRIGHT PARKING LOT	1225 WEBSTER ST	1/8 - 1/4 WSW	S64	50
PACIFIC BELL	1519 FRANKLIN STREET	1/8 - 1/4 NW	U72	53
FINANCIAL CENTER BUILDING	405 14TH ST	1/8 - 1/4 WNW	T77	62
ZIMMERMAN INVESTMENTS	420 13TH ST	1/8 - 1/4 W	AA102	84
LEE FAMILY ASSOCIATES	387 12TH ST E	1/8 - 1/4 WSW	Z104	88
TUNE UP MASTERS #325	450 14TH ST E	1/8 - 1/4 WNW	142	124
ZIMMERMAN INVESTMENTS	1330 BROADWAY	1/8 - 1/4 WNW	AN146	128
OFFICE OF THE PRESIDENT U	1111 FRANKLIN	1/8 - 1/4 WSW	AK149	134
PACIFIC RENAISSANCE PLAZA	1000 FRANKLIN ST	1/4 - 1/2 WSW	173	148
BRAMALEA PACIFIC	1111 BROADWAY	1/4 - 1/2 W	174	150
OAKLAND CITY HALL	#1 CITY HALL PLAZA	1/4 - 1/2 WNW	181	162
OAKLAND CITY HALL WEST	1417 CLAY ST	1/4 - 1/2 WNW	194	186
OAKLAND FEDERAL BUILDING	1305 CLAY ST	1/4 - 1/2 WNW	AX197	192
FIVE CITY CENTER	1300 CLAY ST	1/4 - 1/2 WNW	AX199	195
BRAMALEA PACIFIC	UNKNOWN 12TH / CLAY	1/4 - 1/2 WNW	214	209
<u>Lower Elevation</u>	<u>Address</u>	<u>Dist / Dir</u>	<u>Map ID</u>	<u>Page</u>
CHEVRON	1633 HARRISON ST	0 - 1/8 NNE	L45	30
KRISTICH MONTEREY PIPE CO	190 14TH	0 - 1/8 SE	N48	38
LAKEHURST HOTEL	1569 JACKSON ST	1/8 - 1/4 E	R62	46
MOBIL	160 14TH ST	1/8 - 1/4 ESE	V81	66
DOUGLAS PARKING COMPANY	1721 WEBSTER ST	1/8 - 1/4 N	X82	66
ALCOPARK GARAGE	165 13TH ST	1/8 - 1/4 SE	AF110	91
PACIFIC BELL	1587 FRANKLIN ST	1/8 - 1/4 NNW	AH112	97
TOOTHMAN DEVELOPMENT	1736 FRANKLIN ST	1/8 - 1/4 NNW	130	117
WESTERN UNION	125 12TH ST	1/4 - 1/2 SSE	170	142
PG&E REGIONAL HEADQUARTERS	1919 WEBSTER ST	1/4 - 1/2 N	171	146
FIRE ALARM STATION	1310 OAK ST	1/4 - 1/2 SE	172	146
REGILLUS CONDOMINIUMS	200 LAKESIDE DR	1/4 - 1/2 NE	175	152
KAISER CENTER	300 LAKESIDE DR	1/4 - 1/2 NE	176	152
KAISER REGIONAL PARKING	1901 FRANKLIN ST	1/4 - 1/2 N	177	157
MOBIL	1975 WEBSTER ST	1/4 - 1/2 NNE	178	157
LAKE POINT TOWERS LIMITED	101 LAKESIDE DR	1/4 - 1/2 ENE	179	159
OAKLAND FIRE STATION #12	822 ALICE ST	1/4 - 1/2 SSW	AR180	161
UNOCAL	800 HARRISON ST	1/4 - 1/2 SSW	AS182	165
BUILDING H 209	271 8TH ST	1/4 - 1/2 SSW	184	170
EXXON	250 8TH ST	1/4 - 1/2 SSW	AR185	171
VIC'S AUTOMOTIVE SERVICE	245 8TH AVE	1/4 - 1/2 SSW	AR186	176
BILL LOUIE'S AUTO SERVICE	800 FRANKLIN ST	1/4 - 1/2 SW	193	182
SHELL	726 HARRISON ST	1/4 - 1/2 SSW	AV195	187
OAKLAND AUTO PARTS	706 HARRISON ST	1/4 - 1/2 SSW	AV202	197
CHEVRON	1911 TELEGRAPH AVE	1/4 - 1/2 NNW	BA208	204
SHELL	461 8TH ST	1/4 - 1/2 WSW	215	209
EMPORIUM CAPWELL	20TH / BROADWAY	1/4 - 1/2 N	225	218
CARD LOCK FORMER BUILDING H 20	79 8TH AVE	1/4 - 1/2 SSE	226	218
LANEY JUNIOR COLLEGE	900 FALLON ST	1/4 - 1/2 SSE	228	220
ORDWAY THE	ONE KAISER PLAZA	1/4 - 1/2 NNE	237	229
CITY BLUE PRINT	1700 JEFFERSON ST	1/4 - 1/2 NW	243	236
GOODYEAR SERVICE STATION	2025 TELEGRAPH AVE	1/4 - 1/2 NNW	BF244	239

EXECUTIVE SUMMARY

<u>Lower Elevation</u>	<u>Address</u>	<u>Dist / Dir</u>	<u>Map ID</u>	<u>Page</u>
SALVATION ARMY	810 CLAY ST	1/4 - 1/2 WSW 262		254

LUST: The Leaking Underground Storage Tank Incident Reports contain an inventory of reported leaking underground storage tank incidents. The data come from the State Water Resources Control Board Leaking Underground Storage Tank Information System.

A review of the LUST list, as provided by EDR, and dated 07/10/2007 has revealed that there are 48 LUST sites within approximately 0.5 miles of the target property.

<u>Equal/Higher Elevation</u>	<u>Address</u>	<u>Dist / Dir</u>	<u>Map ID</u>	<u>Page</u>
CHEVRON Facility Status: Case Closed	301 14TH ST	0 - 1/8 SW	B10	14
QUALITY TUNE UP Facility Status: Case Closed	246 14TH ST	0 - 1/8 SE	E22	22
YWCA OF OAKLAND Facility Status: Case Closed	1515 WEBSTER ST	0 - 1/8 NW	37	27
ALLRIGHT PARKING LOT Facility Status: Case Closed	1225 WEBSTER ST	1/8 - 1/4 WSW	S64	50
PACIFIC BELL Facility Status: Case Closed	1519 FRANKLIN STREET	1/8 - 1/4 NW	U72	53
FINANCIAL CENTER BUILDING Facility Status: Case Closed	405 14TH ST	1/8 - 1/4 WNW	T77	62
ZIMMERMAN INVESTMENTS Facility Status: Case Closed	420 13TH ST	1/8 - 1/4 W	AA102	84
LEE FAMILY ASSOCIATES Facility Status: Case Closed	387 12TH ST E	1/8 - 1/4 WSW	Z104	88
SHORE ACRES GAS Facility Status: Leak being confirmed	403 12TH	1/8 - 1/4 WSW	AD125	113
TUNE UP MASTERS #325 Facility Status: Case Closed	450 14TH ST E	1/8 - 1/4 WNW	142	124
ZIMMERMAN INVESTMENTS OFFICE OF THE PRESIDENT UC Facility Status: Case Closed	1330 BROADWAY 1111 FRANKLIN ST	1/8 - 1/4 WNW 1/8 - 1/4 WSW	AN146 AK148	128 132
WILLIE D HARPER BUILDING Facility Status: Leak being confirmed	314 10TH	1/8 - 1/4 SSW	152	135
PACIFIC RENAISSANCE PLAZA Facility Status: Post remedial action monitoring	1000 FRANKLIN ST	1/4 - 1/2 WSW	173	148
BRAMALEA PACIFIC Facility Status: Case Closed	1111 BROADWAY	1/4 - 1/2 W	174	150
OAKLAND CITY HALL Facility Status: Case Closed	#1 CITY HALL PLAZA	1/4 - 1/2 WNW	181	162
OAKLAND CITY HALL WEST Facility Status: Case Closed	1417 CLAY ST	1/4 - 1/2 WNW	194	186
OAKLAND FEDERAL BUILDING Facility Status: Case Closed	1305 CLAY ST	1/4 - 1/2 WNW	AX197	192
FIVE CITY CENTER Facility Status: Case Closed	1300 CLAY ST	1/4 - 1/2 WNW	AX199	195

EXECUTIVE SUMMARY

<u>Lower Elevation</u>	<u>Address</u>	<u>Dist / Dir</u>	<u>Map ID</u>	<u>Page</u>
CHEVRON Facility Status: Leak being confirmed	1633 HARRISON ST	0 - 1/8 NNE	L45	30
LAKEHURST HOTEL Facility Status: Case Closed	1569 JACKSON ST	1/8 - 1/4E	R62	46
MOBIL #10-MHG Facility Status: Pollution Characterization	160 14TH	1/8 - 1/4ESE	V80	65
DOUGLAS PARKING COMPANY Facility Status: Pollution Characterization	1721 WEBSTER ST	1/8 - 1/4N	X82	66
ALCOPARK GARAGE Facility Status: Pollution Characterization	165 13TH ST	1/8 - 1/4SE	AF110	91
PACIFIC BELL Facility Status: Case Closed	1587 FRANKLIN ST	1/8 - 1/4NNW	AH112	97
TOOTHMAN DEVELOPMENT Facility Status: Case Closed	1736 FRANKLIN ST	1/8 - 1/4NNW	130	117
WESTERN UNION Facility Status: Case Closed	125 12TH ST	1/4 - 1/2SSE	170	142
FIRE ALARM STATION Facility Status: Case Closed	1310 OAK ST	1/4 - 1/2SE	172	146
KAISER CENTER Facility Status: Case Closed	300 LAKESIDE DR	1/4 - 1/2NE	176	152
MOBIL Facility Status: Case Closed	1975 WEBSTER ST	1/4 - 1/2NNE	178	157
LAKE POINT TOWERS LIMITED Facility Status: Case Closed	101 LAKESIDE DR	1/4 - 1/2ENE	179	159
OAKLAND FIRE STATION #12 Facility Status: Case Closed	822 ALICE ST	1/4 - 1/2SSW	AR180	161
UNOCAL Facility Status: Pollution Characterization	800 HARRISON ST	1/4 - 1/2SSW	AS182	165
BUILDING H 209 Facility Status: No Action	271 8TH ST	1/4 - 1/2SSW	184	170
EXXON Facility Status: Pollution Characterization	250 8TH ST	1/4 - 1/2SSW	AR185	171
VIC'S AUTOMOTIVE SERVICE Facility Status: Pollution Characterization	245 8TH AVE	1/4 - 1/2SSW	AR186	176
BILL LOUIE'S AUTO SERVICE Facility Status: Pollution Characterization	800 FRANKLIN ST	1/4 - 1/2SW	193	182
SHELL Facility Status: Remediation Plan	726 HARRISON ST	1/4 - 1/2SSW	AV195	187
OAKLAND AUTO PARTS Facility Status: Remediation Plan	706 HARRISON ST	1/4 - 1/2SSW	AV202	197
CHEVRON Facility Status: Post remedial action monitoring	1911 TELEGRAPH AVE	1/4 - 1/2NNW	BA208	204
SHELL Facility Status: Pollution Characterization	461 8TH ST	1/4 - 1/2WSW	215	209
CARD LOCK FORMER BUILDING H 20 Facility Status: No Action	79 8TH AVE	1/4 - 1/2SSE	226	218

EXECUTIVE SUMMARY

<u>Lower Elevation</u>	<u>Address</u>	<u>Dist / Dir</u>	<u>Map ID</u>	<u>Page</u>
LANEY JUNIOR COLLEGE Facility Status: Case Closed	900 FALLON ST	1/4 - 1/2SSE	228	220
ORDWAY THE Facility Status: Case Closed	ONE KAISER PLAZA	1/4 - 1/2NNE	237	229
CITY BLUE PRINT Facility Status: Pollution Characterization	1700 JEFFERSON ST	1/4 - 1/2NW	243	236
GOODYEAR SERVICE STATION Facility Status: Case Closed	2025 TELEGRAPH AVE	1/4 - 1/2NNW	BF244	239
T & T AUTO Facility Status: Case Closed	610 OAK ST	1/4 - 1/2S	258	250
SALVATION ARMY Facility Status: Case Closed	810 CLAY ST	1/4 - 1/2WSW	262	254

CA FID: The Facility Inventory Database contains active and inactive underground storage tank locations. The source is the State Water Resource Control Board.

A review of the CA FID UST list, as provided by EDR, and dated 10/31/1994 has revealed that there are 13 CA FID UST sites within approximately 0.25 miles of the target property.

<u>Equal/Higher Elevation</u>	<u>Address</u>	<u>Dist / Dir</u>	<u>Map ID</u>	<u>Page</u>
QUALITY TUN UP	246 014TH ST	0 - 1/8 WSW	B17	18
COCHRAN & CELLI	301 12TH ST	0 - 1/8 SSW	O53	41
HARRISON CAR WASH	301 014TH ST	1/8 - 1/4W	63	48
PACIFIC BELL	1519 FRANKLIN STREET	1/8 - 1/4NW	U72	53
OFFICE OF FLEET ADMINISTRATION	1111 JACKSON ST	1/8 - 1/4S	Y87	75
ZIMMERMAN INVESTMENTS	420 13TH ST	1/8 - 1/4W	AA102	84

<u>Lower Elevation</u>	<u>Address</u>	<u>Dist / Dir</u>	<u>Map ID</u>	<u>Page</u>
CIVIC CENTER ANNEX	201 13TH ST	0 - 1/8 SSE	Q56	44
MOBIL SERVICE STATION	160 014TH ST	1/8 - 1/4ESE	V74	58
DOUGLAS PARKING COMPANY	1721 WEBSTER ST	1/8 - 1/4N	X82	66
ALCOPARK GARAGE	165 13TH ST	1/8 - 1/4SE	AF109	91
PACIFIC BELL	1587 FRANKLIN STREET	1/8 - 1/4NNW	AH113	100
19TH & HARRISON ST.	1833 HARRISON ST	1/8 - 1/4NNE	AI120	111
VACANT LOT	1881 HARRISON	1/8 - 1/4NNE	AI132	119

CA SLIC: SLIC Region comes from the California Regional Water Quality Control Board.

A review of the SLIC list, as provided by EDR, and dated 08/03/2007 has revealed that there are 13 SLIC sites within approximately 0.5 miles of the target property.

<u>Equal/Higher Elevation</u>	<u>Address</u>	<u>Dist / Dir</u>	<u>Map ID</u>	<u>Page</u>
FRANK G MAR COMMUNITY HOUSING Facility Status: Case Open	283 13TH	0 - 1/8 SSW	H35	26
FRANK MAR COMMUNITY HOUSING PR	383 13TH ST	1/8 - 1/4W	65	51
TRIBUNE TOWER COMPLEX	409 13TH ST	1/8 - 1/4W	AA91	79
CITY OF OAKLAND PARKING LOT Facility Status: Case Open	910 BROADWAY	1/4 - 1/2WSW	AU189	179

EXECUTIVE SUMMARY

<u>Equal/Higher Elevation</u>	<u>Address</u>	<u>Dist / Dir</u>	<u>Map ID</u>	<u>Page</u>
PARKING LOT Facility Status: Case Closed	0 9TH ST / BROADWAY	1/4 - 1/2 WSW	AU192	181
CITY CENTER PROJECT PARCEL 9 Facility Status: Case Closed	1155 CLAY	1/4 - 1/2 W	AZ205	202
REDEVELOPMENT OF OAKLAND Facility Status: Case Closed	901 WASHINGTON	1/4 - 1/2 WSW	BB211	207
CITY CENTER GARAGE WEST SITE	UNKNOWN 12TH ST / JEF	1/4 - 1/2 W	257	250
<u>Lower Elevation</u>	<u>Address</u>	<u>Dist / Dir</u>	<u>Map ID</u>	<u>Page</u>
PARKING LOT Facility Status: Case Closed	1750 WEBSTER	1/8 - 1/4 N	X94	82
ICE VENTURES PROJECT Facility Status: Case Closed	540 17TH	1/4 - 1/2 NW	AT188	179
OAKLAND GALLERIA PROJECT CITY	UNKNOWN 19TH / BROADW	1/4 - 1/2 NNW	190	179
OAKLAND AUTOMATIC SALES Facility Status: Case Closed	719 ALICE	1/4 - 1/2 SSW	AY201	197
HOWARD JOHNSON EXPRESS INN Facility Status: Case Closed Facility Status: Case Closed	423 7TH	1/4 - 1/2 SW	BI239	233

Alameda CS: A listing of contaminated sites overseen by the Toxic Release Program (oil and groundwater contamination from chemical releases and spills) and the Leaking Underground Storage Tank Program (soil and ground water contamination from leaking petroleum USTs).

A review of the CS list, as provided by EDR, and dated 04/24/2007 has revealed that there are 52 CS sites within approximately 0.5 miles of the target property.

<u>Equal/Higher Elevation</u>	<u>Address</u>	<u>Dist / Dir</u>	<u>Map ID</u>	<u>Page</u>
HARRISON CAR WASH	301 14TH ST	0 - 1/8 SW	B14	16
QUALITY TUNE UP	246 14TH ST	0 - 1/8 SE	E22	22
FRANK G MAR COMMUNITY HOUSING	283 13TH ST	0 - 1/8 SSW	H34	26
YWCA OF OAKLAND	1515 WEBSTER ST	0 - 1/8 NW	37	27
ALLRIGHT PARKING LOT	1225 WEBSTER ST	1/8 - 1/4 WSW	S64	50
PACIFIC BELL	1519 FRANKLIN STREET	1/8 - 1/4 NW	U72	53
FINANCIAL CENTER BUILDING	405 14TH ST	1/8 - 1/4 WNW	T77	62
ZIMMERMAN INVESTMENTS	420 13TH ST	1/8 - 1/4 W	AA102	84
LEE ASSOC.	387 12TH ST	1/8 - 1/4 WSW	Z103	88
OFFICE OF THE PRESIDENT UC	1111 FRANKLIN ST	1/8 - 1/4 WSW	AK148	132
PACIFIC RENAISSANCE PLAZA	1000 FRANKLIN ST	1/4 - 1/2 WSW	173	148
BRAMALEA PACIFIC	1111 BROADWAY	1/4 - 1/2 W	174	150
CITY OF OAKLAND PARKING LOT	910 BROADWAY	1/4 - 1/2 WSW	AU189	179
PARKING LOT	0 9TH ST / BROADWAY	1/4 - 1/2 WSW	AU192	181
OAKLAND CITY HALL WEST	1417 CLAY ST	1/4 - 1/2 WNW	194	186
OAKLAND FEDERAL BUILDING	1305 CLAY ST	1/4 - 1/2 WNW	AX197	192
CITY CENTER PROJECT PARCEL 9	1155 CLAY ST	1/4 - 1/2 W	AZ206	203
EAST BAY ASIAN LOCAL DEVELOPME	901 WASHINGTON ST	1/4 - 1/2 WSW	BB210	206
<u>Lower Elevation</u>	<u>Address</u>	<u>Dist / Dir</u>	<u>Map ID</u>	<u>Page</u>
CHEVRON	1633 HARRISON ST	0 - 1/8 NNE	L45	30

EXECUTIVE SUMMARY

<u>Lower Elevation</u>	<u>Address</u>	<u>Dist / Dir</u>	<u>Map ID</u>	<u>Page</u>
LAKEHURST HOTEL	1569 JACKSON ST	1/8 - 1/4 E	R62	46
MOBIL	160 14TH ST	1/8 - 1/4 ESE	V81	66
DOUGLAS PARKING COMPANY	1721 WEBSTER ST	1/8 - 1/4 N	X82	66
PARKING LOT	1750 WEBSTER ST	1/8 - 1/4 N	X95	83
ALCO PARK GARAGE	165 13TH ST	1/8 - 1/4 SE	AF108	91
PACIFIC BELL	1587 FRANKLIN ST	1/8 - 1/4 NNW	AH112	97
TOOTHMAN DEVELOPMENT	1736 FRANKLIN ST	1/8 - 1/4 NNW	130	117
WESTERN UNION	125 12TH ST	1/4 - 1/2 SSE	170	142
FIRE ALARM STATION	1310 OAK ST	1/4 - 1/2 SE	172	146
KAISER CENTER	300 LAKESIDE DR	1/4 - 1/2 NE	176	152
MOBIL	1975 WEBSTER ST	1/4 - 1/2 NNE	178	157
OAKLAND FIRE STATION #12	822 ALICE ST	1/4 - 1/2 SSW	AR180	161
UNOCAL	800 HARRISON ST	1/4 - 1/2 SSW	AS182	165
BAYPORTE VILLAGE (ACORN II APA)	310 8TH ST	1/4 - 1/2 SSW	AS183	170
EXXON	250 8TH ST	1/4 - 1/2 SSW	AR185	171
VIC'S AUTOMOTIVE SERVICE	245 8TH AVE	1/4 - 1/2 SSW	AR186	176
ICE VENTURES PROJECT	540 17TH ST	1/4 - 1/2 NW	AT187	178
BILL LOUIE'S AUTO SERVICE	800 FRANKLIN ST	1/4 - 1/2 SW	193	182
SHELL	726 HARRISON ST	1/4 - 1/2 SSW	AV195	187
OAKLAND AUTOMATIC SALES	719 ALICE ST	1/4 - 1/2 SSW	AY200	197
OAKLAND AUTO PARTS	706 HARRISON ST	1/4 - 1/2 SSW	AV202	197
EMPORIUM CAPWELL	0 20TH ST / BROADWAY	1/4 - 1/2 N	203	201
CHEVRON	1911 TELEGRAPH AVE	1/4 - 1/2 NNW	BA208	204
SHELL	461 8TH ST	1/4 - 1/2 WSW	215	209
CARD LOCK FORMER BUILDING H 20	79 8TH AVE	1/4 - 1/2 SSE	226	218
LANEY JUNIOR COLLEGE	900 FALLON ST	1/4 - 1/2 SSE	228	220
HOWARD JOHNSON EXPRESS INN	423 7TH ST	1/4 - 1/2 SW	BI238	233
ORDWAY BUILDING	1 KAISER PLZ	1/4 - 1/2 NNE	241	234
CITY BLUE PRINT	1700 JEFFERSON ST	1/4 - 1/2 NW	243	236
GOODYEAR SERVICE STATION	2025 TELEGRAPH AVE	1/4 - 1/2 NNW	BF244	239
SINCLAIR PAINT SITE	2040 SAN PABLO AVE	1/4 - 1/2 NW	BG247	243
T & T AUTO	610 OAK ST	1/4 - 1/2 S	258	250
SALVATION ARMY	810 CLAY ST	1/4 - 1/2 WSW	262	254

UST: The Underground Storage Tank database contains registered USTs. USTs are regulated under Subtitle I of the Resource Conservation and Recovery Act (RCRA). The data come from the State Water Resources Control Board's Hazardous Substance Storage Container Database.

A review of the UST list, as provided by EDR, and dated 07/10/2007 has revealed that there are 4 UST sites within approximately 0.25 miles of the target property.

<u>Equal/Higher Elevation</u>	<u>Address</u>	<u>Dist / Dir</u>	<u>Map ID</u>	<u>Page</u>
EBMUD ADMINISTRATION CENTER	375 11TH ST	1/8 - 1/4 WSW	129	117

<u>Lower Elevation</u>	<u>Address</u>	<u>Dist / Dir</u>	<u>Map ID</u>	<u>Page</u>
AC TRANSIT	1600 FRANKLIN ST	1/8 - 1/4 NW	85	71
ALCOPARK GARAGE	165 13TH ST	1/8 - 1/4 SE	AF110	91
PACIFIC BELL	1587 FRANKLIN STREET	1/8 - 1/4 NNW	AH113	100

EXECUTIVE SUMMARY

HIST UST: Historical UST Registered Database.

A review of the HIST UST list, as provided by EDR, and dated 10/15/1990 has revealed that there are 13 HIST UST sites within approximately 0.25 miles of the target property.

<u>Equal/Higher Elevation</u>	<u>Address</u>	<u>Dist / Dir</u>	<u>Map ID</u>	<u>Page</u>
HARRISON CAR WASH	301 14TH ST	0 - 1/8 SW	B14	16
QUALITY TUN UP	246-14TH ST.	0 - 1/8 WSW	B18	19
COCHRAN & CELLI	301 12TH ST	0 - 1/8 SSW	O53	41
PACIFIC BELL	1519 FRANKLIN STREET	1/8 - 1/4NW	U72	53
OFFICE OF FLEET ADMINISTRATION	1111 JACKSON ST	1/8 - 1/4S	Y88	77
STATE OFFICE BUILDING	1111 JACKSON ST	1/8 - 1/4S	Y89	78
<u>Lower Elevation</u>	<u>Address</u>	<u>Dist / Dir</u>	<u>Map ID</u>	<u>Page</u>
CIVIC CENTER ANNEX	201 - 13TH STREET	0 - 1/8 SSE	Q57	45
MOBIL SERVICE STATION	160-14TH ST.	1/8 - 1/4ESE	V75	60
DOUGLAS MOTOR SERVICE	1721 WEBSTER ST	1/8 - 1/4N	X83	69
ALCOPARK GARAGE	165 13TH ST	1/8 - 1/4SE	AF110	91
PACIFIC BELL	1587 FRANKLIN STREET	1/8 - 1/4NNW	AH113	100
19TH & HARRISON ST.	1833 HARRISON ST	1/8 - 1/4NNE	AI121	112
VACANT LOT	1881 HARRISON ST	1/8 - 1/4NNE	AI131	119

AST: The Aboveground Storage Tank database contains registered ASTs. The data come from the State Water Resources Control Board's Hazardous Substance Storage Container Database.

A review of the AST list, as provided by EDR, and dated 05/01/2007 has revealed that there are 3 AST sites within approximately 0.25 miles of the target property.

<u>Equal/Higher Elevation</u>	<u>Address</u>	<u>Dist / Dir</u>	<u>Map ID</u>	<u>Page</u>
OAKLAND POINT OF PRESENCE	1330 BROADWAY	1/8 - 1/4WNW	AN144	126
MCI WORLDCOM	1330 BROADWAY	1/8 - 1/4WNW	AN147	132
<u>Lower Elevation</u>	<u>Address</u>	<u>Dist / Dir</u>	<u>Map ID</u>	<u>Page</u>
PACIFIC BELL	1587 FRANKLIN STREET	1/8 - 1/4NNW	AH113	100

SWEEPS: Statewide Environmental Evaluation and Planning System. This underground storage tank listing was updated and maintained by a company contacted by the SWRCB in the early 1980's. The listing is no longer updated or maintained. The local agency is the contact for more information on a site on the SWEEPS list.

A review of the SWEEPS UST list, as provided by EDR, and dated 06/01/1994 has revealed that there are 14 SWEEPS UST sites within approximately 0.25 miles of the target property.

<u>Equal/Higher Elevation</u>	<u>Address</u>	<u>Dist / Dir</u>	<u>Map ID</u>	<u>Page</u>
QUALITY TUN UP	246 014TH ST	0 - 1/8 WSW	B17	18
COCHRAN & CELLI	301 12TH ST	0 - 1/8 SSW	O53	41
HARRISON CAR WASH	301 014TH ST	1/8 - 1/4W	63	48
PACIFIC BELL	1519 FRANKLIN STREET	1/8 - 1/4NW	U72	53
OFFICE OF FLEET ADMINISTRATION	1111 JACKSON ST	1/8 - 1/4S	Y87	75
ZIMMERMAN INVESTMENTS	420 13TH ST	1/8 - 1/4W	AA102	84
LEE ASSOC.	387 12TH ST	1/8 - 1/4WSW	Z103	88
<u>Lower Elevation</u>	<u>Address</u>	<u>Dist / Dir</u>	<u>Map ID</u>	<u>Page</u>
CIVIC CENTER ANNEX	201 13TH ST	0 - 1/8 SSE	Q56	44

EXECUTIVE SUMMARY

<u>Lower Elevation</u>	<u>Address</u>	<u>Dist / Dir</u>	<u>Map ID</u>	<u>Page</u>
MOBIL SERVICE STATION	160 014TH ST	1/8 - 1/4 ESE	V74	58
DOUGLAS PARKING COMPANY	1721 WEBSTER ST	1/8 - 1/4 N	X82	66
ALCOPARK GARAGE	165 13TH ST	1/8 - 1/4 SE	AF110	91
PACIFIC BELL	1587 FRANKLIN STREET	1/8 - 1/4 NNW	AH113	100
19TH & HARRISON ST.	1833 HARRISON ST	1/8 - 1/4 NNE	A1120	111
VACANT LOT	1881 HARRISON	1/8 - 1/4 NNE	A1132	119

NOTIFY 65: Notify 65 records contain facility notifications about any release that could impact drinking water and thereby expose the public to a potential health risk. The data come from the State Water Resources Control Board's Proposition 65 database.

A review of the Notify 65 list, as provided by EDR, and dated 10/21/1993 has revealed that there are 13 Notify 65 sites within approximately 1 mile of the target property.

<u>Equal/Higher Elevation</u>	<u>Address</u>	<u>Dist / Dir</u>	<u>Map ID</u>	<u>Page</u>
F.G. MAR COMMUNITY HOUSING PRJ	HARRISON / 13TH STREE	0 - 1/8 WSW	K51	40
OAKLAND CITY HALL	#1 CITY HALL PLAZA	1/4 - 1/2 WNW	181	162
LAWLER APARTMENTS	431 LEE STREET	1/2 - 1 NE	272	270
BROADWAY VOLKSWAGON	2749 BROADWAY	1/2 - 1 N	281	291

<u>Lower Elevation</u>	<u>Address</u>	<u>Dist / Dir</u>	<u>Map ID</u>	<u>Page</u>
LANEY COLLEGE	600 FALLON STREET	1/2 - 1 S	263	256
P. E. O'HAIR & CO.	309 FOURTH STREET	1/2 - 1 SW	264	256
CROWLEY MARITIME CORP.	PAC. DRY DOCK YARDS 1 /	1/2 - 1 NNE	266	258
SERVICE STATION	2225 TELEGRAPH AVENUE	1/2 - 1 NNW	267	258
VUKASIN/SOUTHERN PACIFIC TRANS	54 EMBARCADERO AT FALLO	1/2 - 1 S	BN275	273
AMERICAN INK PRODUCTS	630 EAST 10TH STREET	1/2 - 1 SE	277	274
YUEN'S EXXON SERVICE	1901 PARK BOULEVARD	1/2 - 1 ESE	278	274
SERVICE STATION	500 GRAND AVENUE	1/2 - 1 ENE	282	292
MOSTLY MUSTANGS	2576 MARTIN LUTHER KING	1/2 - 1 NNW	284	294

DRYCLEANERS: A list of drycleaner related facilities that have EPA ID numbers. These are facilities with certain SIC codes: power laundries, family and commercial; garment pressing and cleaners' agents; linen supply; coin-operated laundries and cleaning; drycleaning plants except rugs; carpet and upholster cleaning; industrial launderers; laundry and garment services.

A review of the CLEANERS list, as provided by EDR, and dated 07/31/2007 has revealed that there are 2 CLEANERS sites within approximately 0.25 miles of the target property.

<u>Lower Elevation</u>	<u>Address</u>	<u>Dist / Dir</u>	<u>Map ID</u>	<u>Page</u>
B & T ONE HOUR CLEANERS	190 14TH STREET	0 - 1/8 SE	N47	32
KRISTICH MONTEREY PIPE CO	190 14TH	0 - 1/8 SE	N48	38

EXECUTIVE SUMMARY

ENVIROSTOR: The Department of Toxic Substances Control's (DTSC's) Site Mitigation and Brownfields Reuse Program's (SMBRP's) EnviroStor database identifies sites that have known contamination or sites for which there may be reasons to investigate further. The database includes the following site types: Federal Superfund sites (National Priorities List (NPL)); State Response, including Military Facilities and State Superfund; Voluntary Cleanup; and School sites. EnviroStor provides similar information to the information that was available in CalSites, and provides additional site information, including, but not limited to, identification of formerly-contaminated properties that have been released for reuse, properties where environmental deed restrictions have been recorded to prevent inappropriate land uses, and risk characterization information that is used to assess potential impacts to public health and the environment at contaminated sites.

A review of the ENVIROSTOR list, as provided by EDR, and dated 05/29/2007 has revealed that there are 10 ENVIROSTOR sites within approximately 1 mile of the target property.

<u>Lower Elevation</u>	<u>Address</u>	<u>Dist / Dir</u>	<u>Map ID</u>	<u>Page</u>
LAKESIDE NON-FERROUS METALS CO Facility Status: Inactive - Needs Evaluation	412 MADISON STREET	1/2 - 1 S	265	257
FRANCIS PLATING OF OAKLAND, IN Facility Status: No Further Action	785 7TH STREET	1/2 - 1	WSW BM269	263
A. BERCOVICH 2ND STREET Facility Status: Active	127 2ND STREET	1/2 - 1 S	270	265
PG&E - OAKLAND Facility Status: Active	50 MARKET BETWEEN FIRST	1/2 - 1	WSW 271	268
PORT OF OAKLAND/CINEMA PR Facility Status: Certified / Operation & Maintenance	CLAY / EMBARCADERO	1/2 - 1	WSW 274	270
BEDFORD PROPERTY SITE Facility Status: Refer: RWQCB	54 EMBARCADERO STREET	1/2 - 1 S	BN276	273
CAPITOL SUPPLY COMPANY Facility Status: Refer: RCRA	351 EMBARCADERO	1/2 - 1 SSE	279	274
OAKLAND POWER PLANT Facility Status: Active	50 MARTIN LUTHER KING J	1/2 - 1	WSW 283	292
CHRIS AND GEORGE'S AUTO REPAIR Facility Status: Refer: Local Agency	2520 WEST STREET	1/2 - 1 NNW	286	297
CHANG'S AUTOMOTIVE Facility Status: Certified	1009 7TH ST	1/2 - 1 W	287	298

EDR PROPRIETARY RECORDS

EDR Manufactured Gas Plants: The EDR Proprietary Manufactured Gas Plant Database includes records of coal gas plants (manufactured gas plants) compiled by EDR's researchers. Manufactured gas sites were used in the United States from the 1800's to 1950's to produce a gas that could be distributed and used as fuel. These plants used whale oil, rosin, coal, or a mixture of coal, oil, and water that also produced a significant amount of waste. Many of the byproducts of the gas production, such as coal tar (oily waste containing volatile and non-volatile chemicals), sludges, oils and other compounds are potentially hazardous to human health and the environment. The byproduct from this process was frequently disposed of directly at the plant site and can remain or spread slowly, serving as a continuous source of soil and groundwater contamination.

A review of the Manufactured Gas Plants list, as provided by EDR, has revealed that there are 2 Manufactured Gas Plants sites within approximately 1 mile of the target property.

EXECUTIVE SUMMARY

<u>Lower Elevation</u>	<u>Address</u>	<u>Dist / Dir</u>	<u>Map ID</u>	<u>Page</u>
PG AND E GAS PLANT OAKLAND	FIRST AND WASHINGTON	1/2 - 1 SW	273	270
PGANDE OAKLAND	50 MARKET ST BTWN 1ST A	1/2 - 1 WSW	288	300

EDR Historical Auto Stations: EDR has searched selected national collections of business directories and has collected listings of potential gas station/filling station/service station sites that were available to EDR researchers. EDR's review was limited to those categories of sources that might, in EDR's opinion, include gas station/filling station/service station establishments. The categories reviewed included, but were not limited to gas, gas station, gasoline station, filling station, auto, automobile repair, auto service station, service station, etc.

A review of the EDR Historical Auto Stations list, as provided by EDR, has revealed that there are 42 EDR Historical Auto Stations sites within approximately 0.25 miles of the target property.

<u>Equal/Higher Elevation</u>	<u>Address</u>	<u>Dist / Dir</u>	<u>Map ID</u>	<u>Page</u>
CRABTREE M A	1400 HARRISON ST	0 - 1/8 SW	B11	15
MARKOVITS D A	301 14TH ST	0 - 1/8 SW	B15	17
MARKOVITS DAVID	1331 HARRISON ST	0 - 1/8 SSW	31	25
MURPHY P F	230 13TH ST	0 - 1/8 S	I39	29
WOOTEN L E	351 13TH ST	0 - 1/8 WSW	K41	29
JOHNSON REYNOLD C CO	301 12TH ST	0 - 1/8 SSW	O52	41
ZOLOT DAVID	250 12TH ST	0 - 1/8 SSW	P59	46
STANDARD STATIONS INC OFFICE	405 14TH ST	1/8 - 1/4WNW	T71	53
PACIFIC PARKING & SERV STATION	1544 FRANKLIN ST	1/8 - 1/4NW	U73	58
STANDARD STATIONS INC OFFICE	405 14TH TEL GLENCOUR	1/8 - 1/4WNW	T78	64
R	415 14TH ST	1/8 - 1/4WNW	T84	71
CARR S BRAKE SERVICE	290 11TH ST	1/8 - 1/4SSW	AB97	83
HALL & MASON	301 11TH ST	1/8 - 1/4SSW	AB98	83
CLOVER LEAF AUTO BODY & FENDER	288 11TH PHONE LAKESI	1/8 - 1/4SSW	AB99	84
GETZ F J	307 11TH ST	1/8 - 1/4SSW	AB101	84
FOUR WHEEL BRAKE SERVICE	345 11TH ST	1/8 - 1/4SW	AE107	90
ASSOCIATED OIL CO	1100 WEBSTER ST	1/8 - 1/4SW	AE115	110
FREDOTOVICH JOHN	1020 WEBSTER ST	1/8 - 1/4SW	AO154	137
ATHENS JAS	1014 WEBSTER ST	1/8 - 1/4SW	AO156	137

<u>Lower Elevation</u>	<u>Address</u>	<u>Dist / Dir</u>	<u>Map ID</u>	<u>Page</u>
RAYMOND GARAGE	1500 HARRISON ST	0 - 1/8 NNE	D19	21
SCHAUER KARL	1520 HARRISON ST	0 - 1/8 NNE	D24	24
AUTHORIZED BUICK SERVICE STATI	1535 HARRISON AVE	0 - 1/8 NNE	D27	24
ALEXANDER W C	1535 HARRISON ST	0 - 1/8 NNE	D28	24
RODGERS E C	1539 HARRISON ST	0 - 1/8 NNE	D29	25
MURPHY P F MOTOR SERVICE	230 14TH ST	0 - 1/8 SE	G32	25
MEYER A C	201 14TH ST	0 - 1/8 SE	J42	30
BIG THREE AUTO SERVICE	1501 JACKSON ST	0 - 1/8 ESE	43	30
COLLIER A F	1633 HARRISON ST	0 - 1/8 NNE	L44	30
THOMAS J H	201 13TH ST	0 - 1/8 SSE	Q58	46
GROWNEY WM	197 13TH ST	1/8 - 1/4SSE	Q60	46
GARLAND W S	1212 JACKSON ST	1/8 - 1/4SSE	W76	61
CLOVER LEAF AUTO BODY & FENDER	191 12TH ST	1/8 - 1/4SSE	W92	82
SAUNDERS P J	176 12TH ST	1/8 - 1/4SSE	AC105	90
SIGNAL OIL CO	139 14TH ST	1/8 - 1/4ESE	AG122	113
BLISS M S	1839 HARRISON ST	1/8 - 1/4NNE	AI124	113
BUTLER H R	180 11TH ST	1/8 - 1/4S	135	121
BEAK W J	293 19TH ST	1/8 - 1/4NNE	AL138	123

EXECUTIVE SUMMARY

<u>Lower Elevation</u>	<u>Address</u>	<u>Dist / Dir</u>	<u>Map ID</u>	<u>Page</u>
HAMILTON & NUNES	140 12TH ST	1/8 - 1/4SSE	AJ143	125
FROST PERCY	136 12TH ST	1/8 - 1/4SSE	AJ153	136
DONALDSON A J	446 17TH ST	1/8 - 1/4NNW	164	140
GODDARD SERVICE STATION	101 14TH ST	1/8 - 1/4ESE	AQ167	141
NICHOLS M D	100 14TH ST	1/8 - 1/4ESE	AQ168	141

EDR Historical Cleaners: EDR has searched selected national collections of business directories and has collected listings of potential dry cleaner sites that were available to EDR researchers. EDR's review was limited to those categories of sources that might, in EDR's opinion, include dry cleaning establishments. The categories reviewed included, but were not limited to dry cleaners, cleaners, laundry, laundromat, cleaning/laundry, wash & dry etc.

A review of the EDR Historical Cleaners list, as provided by EDR, has revealed that there are 50 EDR Historical Cleaners sites within approximately 0.25 miles of the target property.

<u>Equal/Higher Elevation</u>	<u>Address</u>	<u>Dist / Dir</u>	<u>Map ID</u>	<u>Page</u>
EDWARDS H V	1437 HARRISON ST	0 - 1/8 WNW	A9	13
VANITY CLEANERS	268 14TH ST	0 - 1/8 SSW	C16	18
DILLIO MICHL	1420 ALICE ST	0 - 1/8 SE	E20	21
MANN LOUIS	246 14TH ST	0 - 1/8 SE	E23	23
IDEAL CLEANERS	322 14TH ST	0 - 1/8 W	F25	24
COHN GUS & SON	327 14TH ST	0 - 1/8 W	F26	24
KEE LIM	235 14TH ST	0 - 1/8 SE	E30	25
BETZNER J E	352 14TH ST	0 - 1/8 WNW	38	29
WENTWORTH R E	376 15TH ST	0 - 1/8 NW	M46	32
COHN GUS	378 15TH ST	0 - 1/8 NW	M50	40
JUNG BEN	273 12TH ST	0 - 1/8 SSW	P54	44
BALLARD JAS	382 15TH ST	0 - 1/8 NW	M55	44
GARCIA C B	1429 FRANKLIN ST	1/8 - 1/4WNW	T67	52
LIBERTY CLEANING & DYEING WORK	1422 FRANKLIN CT	1/8 - 1/4WNW	T68	52
PILLING JANE MRS	1409 FRANKLIN ST	1/8 - 1/4WNW	T69	53
UNIQUE PRESSING PARLORS	1509 FRANKLIN ST	1/8 - 1/4NW	U70	53
LIM KEE LAUNDRY	365 12TH ST	1/8 - 1/4WSW	S79	64
NAVY TAILORS	377 12TH ST	1/8 - 1/4WSW	Z90	79
EIGHTEEN MINUTE WASH	381 12TH ST	1/8 - 1/4WSW	Z93	82
SUKK JOS	383 12TH ST	1/8 - 1/4WSW	Z96	83
BON AMI CLEANERS & DYERS	305 11TH ST	1/8 - 1/4SSW	AB100	84
DANBURY HAT WORKS	1214 FRANKLIN ST	1/8 - 1/4WSW	AD106	90
EDWARDS LAURA	467 15TH ST	1/8 - 1/4NW	116	110
SCHWARTZ JOS	1204 FRANKLIN ST	1/8 - 1/4WSW	AD118	110
DOMESTIC LAUNDRY CO	1202 FRANKLIN ST	1/8 - 1/4WSW	AD119	111
WILLIAMS F C	404 12TH ST	1/8 - 1/4WSW	AD123	113
VALET SERVICE	407 12TH ST	1/8 - 1/4WSW	AD126	115
LEE CHARLIE	1129 FRANKLIN ST	1/8 - 1/4WSW	AK133	120
LEM CHARLIE	1125 FRANKLIN ST	1/8 - 1/4WSW	AK134	120
ALLEC J	454 12TH ST	1/8 - 1/4W	AM139	123
COHN ISRAEL	1117 FRANKLIN ST	1/8 - 1/4WSW	AK140	123
STANDARD LAUNDRY	1104 FRANKLIN ST	1/8 - 1/4WSW	AK151	135
QUON THOS	382 10TH ST	1/8 - 1/4SW	155	137
FONG GEO	408 10TH ST	1/8 - 1/4SW	AO158	138
QUI JOS	410 10TH ST	1/8 - 1/4SW	AO159	138
EXCELSIOR LAUNDRY CO	437 12TH ST	1/8 - 1/4W	AM160	139
SEE YEE	387 10TH ST	1/8 - 1/4SW	AO162	139

<u>Lower Elevation</u>	<u>Address</u>	<u>Dist / Dir</u>	<u>Map ID</u>	<u>Page</u>
RENTON IDA M MRS	229 14TH ST	0 - 1/8 SE	G33	26

EXECUTIVE SUMMARY

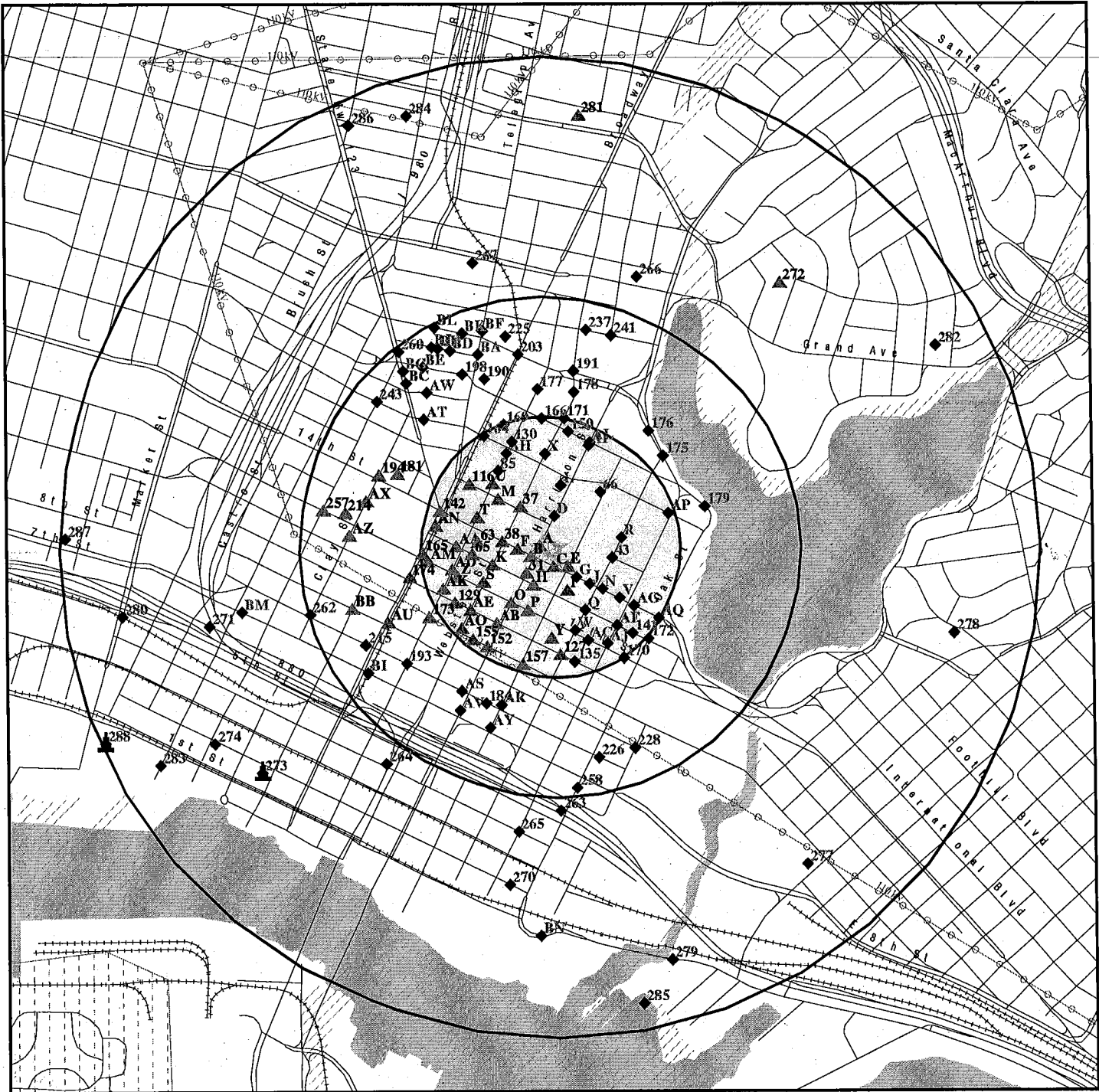
<u>Lower Elevation</u>	<u>Address</u>	<u>Dist / Dir</u>	<u>Map ID</u>	<u>Page</u>
VISHNEK MORRIS	211 14TH ST	0 - 1/8 SE	J40	29
ONE HOUR MARTINIZANG	190 14TH ST	0 - 1/8 SE	N49	40
GOLDEN WEST CLEANERS	1565 JACKSON ST	1/8 - 1/4 E	R61	46
CAMPBELL R E	1553 ALICE ST	1/8 - 1/4 NE	66	52
THRIFTY COIN LAUNDRY	140 14TH ST	1/8 - 1/4 ESE	AG111	97
BON AMI CLEANERS	170 12TH ST	1/8 - 1/4 SSE	AC117	110
BUDGET CLEANERS	295 19TH ST	1/8 - 1/4 NNE	AL137	123
NIGHTINGALE WM	153 13TH ST	1/8 - 1/4 SE	141	124
KLINE HARRY	335 19TH ST	1/8 - 1/4 NNE	150	135
LAKE QUALITY CLEANERS	155 17TH ST	1/8 - 1/4 ENE	AP161	139
SNAPPY LAUNDRY	153 17TH ST	1/8 - 1/4 ENE	AP163	139
PERL BENJ	377 19TH ST	1/8 - 1/4 N	166	141

EXECUTIVE SUMMARY

Due to poor or inadequate address information, the following sites were not mapped:

<u>Site Name</u>	<u>Database(s)</u>
11TH AND CLAY ST PARCEL T5/T6	CS
SOUTHERN PACIFIC TRANSPORT COMPANY	LUST, CS
COMM AIR	LUST, Cortese, CS, SWEEPS UST
ARCO FAC# 2185	HAZNET, CA FID UST, SWEEPS UST
CITY OF OAKLAND #2 ENGINE FIRE	CA FID UST, SWEEPS UST
CARNATION DAIRIES	RESPONSE, ENVIROSTOR
HALL S CLEANERS	CLEANERS
IDEAL CLEANERS	CLEANERS
UNION PACIFIC	LUST, CHMIRS
OAKLAND CITY OF REDEV GAL	Cortese
OAKLAND POLICE STATION	LUST, Cortese
LLOYD WISE NISSAN	LUST, Cortese
BATAVIA PROPERTY	CERC-NFRAP
OAKLAND ARMY BASE - TANK 652	LUST
OAKLAND ARMY BASE - TANK 684	LUST
OAKLAND ARMY BASE - TANK 651	LUST
OAKLAND ARMY BASE - TANK 686	LUST
OAKLAND ARMY BASE - TANK 681	LUST
OAKLAND ARMY BASE - TANK 682	LUST
OAKLAND ARMY BASE - TANK 679	LUST
OAKLAND ARMY BASE - TANK 678	LUST
OAKLAND ARMY BASE - TANK 743	LUST
OAKLAND ARMY BASE - TANK 742	LUST
OAKLAND ARMY BASE TANKS 4&5	LUST
OAKLAND ARMY BASE -11A/12A/13A	LUST
OAKLAND REDEVELOPMENT AGENCY	LUST, SLIC
OAKLAND OEDE CITY OF	LUST, SLIC
EMPORIUM CAPWELL	LUST
GERMAN AUTOCRAFT	LUST
CITY OF OAKLAND #2 ENGINE FIRE	HIST UST
OAKLAND	AST
COMMAIR OAKLAND	RCRA-SQG, HAZNET
OAKLAND TERMINAL RAILWAY PROPERTY	SLIC
UPTOWN THEATER DISTRICT	SLIC
SITE B PROPERTIES	SLIC
EAST BASIN MARINA	SLIC
CATHEDRAL OF CHRIST THE LIGHT	SLIC
OAKLAND CITY OF	SLIC
KAISER HOSPITAL	SLIC
URBAN PROMISE ACADEMY SITE	SCH, ENVIROSTOR
PORT OF OAKLAND - FORMER OAKLAND A	ENVIROSTOR
NABISCO	ENVIROSTOR

OVERVIEW MAP - 2027578.2s



Target Property

Sites at elevations higher than or equal to the target property

Sites at elevations lower than the target property

Manufactured Gas Plants

National Priority List Sites

Dept. Defense Sites

Indian Reservations BIA

Power transmission lines

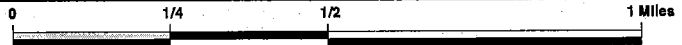
Oil & Gas pipelines

100-year flood zone

500-year flood zone

National Wetland Inventory

Areas of Concern

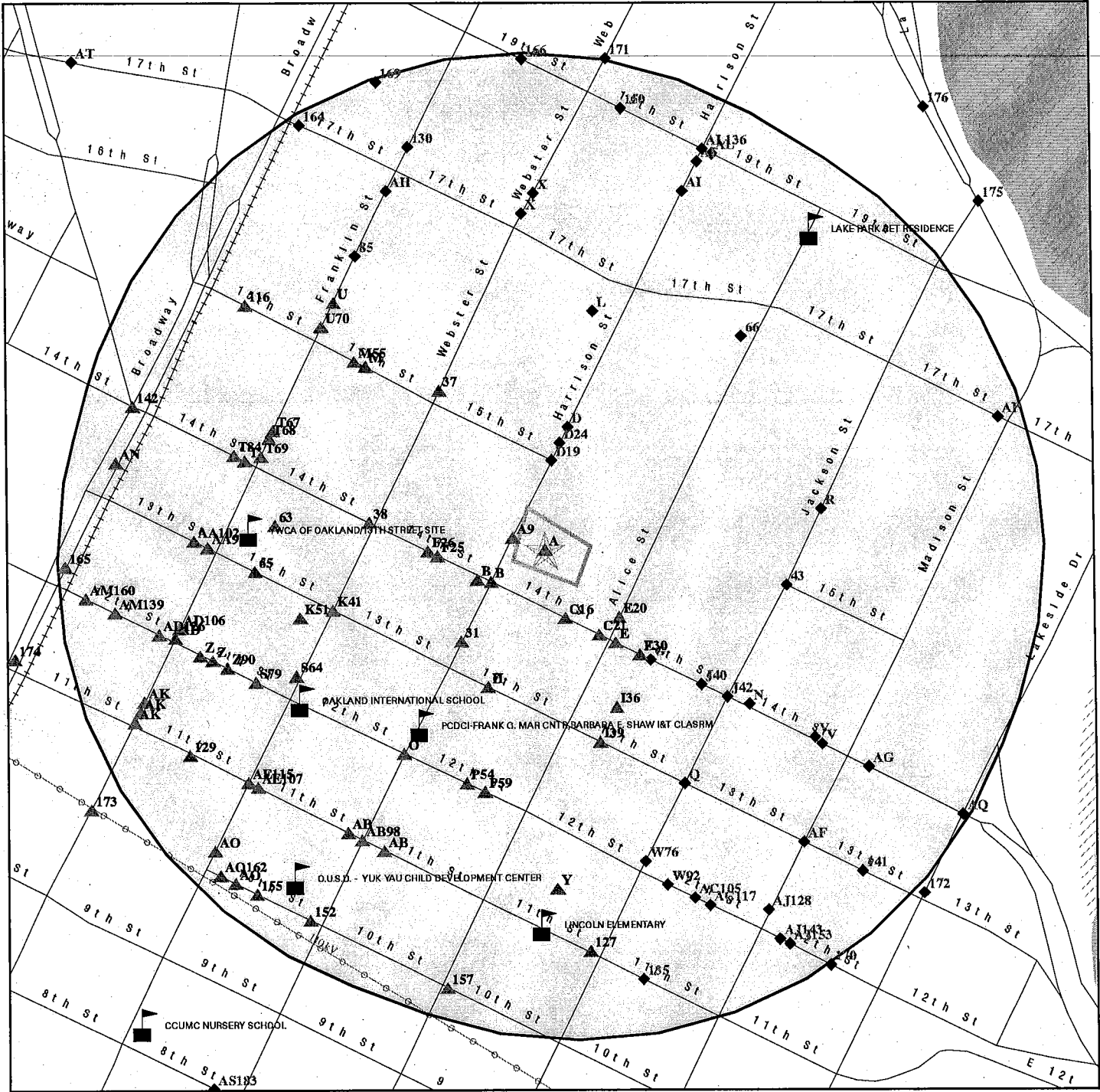


This report includes Interactive Map Layers to display and/or hide map information. The legend includes only those icons for the default map view.

SITE NAME: 540188-85 - Oakland, CA
 ADDRESS: 1432 Harrison St.
 Oakland CA 94612
 LAT/LONG: 37.8032 / 122.2671

CLIENT: Conestoga-Rovers & Associates
 CONTACT: Kelly Connolly
 INQUIRY #: 2027578.2s
 DATE: September 12, 2007 6:45 pm

DETAIL MAP - 2027578.2s



Target Property

Sites at elevations higher than or equal to the target property

Sites at elevations lower than the target property

Manufactured Gas Plants

Sensitive Receptors

National Priority List Sites

Dept. Defense Sites

Indian Reservations BIA

Power transmission lines

Oil & Gas pipelines

100-year flood zone

500-year flood zone

National Wetland Inventory

Areas of Concern



This report includes Interactive Map Layers to display and/or hide map information. The legend includes only those icons for the default map view.

SITE NAME: 540188-85 - Oakland, CA
 ADDRESS: 1432 Harrison St.
 Oakland CA 94612
 LAT/LONG: 37.8032 / 122.2671

CLIENT: Conestoga-Rovers & Associates
 CONTACT: Kelly Connolly
 INQUIRY #: 2027578.2s
 DATE: September 12, 2007 6:45 pm

MAP FINDINGS SUMMARY

Database	Target Property	Search Distance (Miles)	< 1/8	1/8 - 1/4	1/4 - 1/2	1/2 - 1	> 1	Total Plotted
<u>FEDERAL RECORDS</u>								
NPL		1.000	0	0	0	0	NR	0
Proposed NPL		1.000	0	0	0	0	NR	0
Delisted NPL		1.000	0	0	0	0	NR	0
NPL LIENS		TP	NR	NR	NR	NR	NR	0
CERCLIS		0.500	0	0	0	NR	NR	0
CERC-NFRAP		0.500	0	0	1	NR	NR	1
CORRACTS		1.000	0	0	0	2	NR	2
RCRA TSD		0.500	0	0	0	NR	NR	0
RCRA Lg. Quan. Gen.		0.250	0	2	NR	NR	NR	2
RCRA Sm. Quan. Gen.	X	0.250	1	9	NR	NR	NR	10
ERNS		TP	NR	NR	NR	NR	NR	0
HMIRS		TP	NR	NR	NR	NR	NR	0
US ENG CONTROLS		0.500	0	0	0	NR	NR	0
US INST CONTROL		0.500	0	0	0	NR	NR	0
DOD		1.000	0	0	0	0	NR	0
FUDS		1.000	1	0	0	1	NR	2
US BROWNFIELDS		0.500	0	0	41	NR	NR	41
CONSENT		1.000	0	0	0	0	NR	0
ROD		1.000	0	0	0	0	NR	0
UMTRA		0.500	0	0	0	NR	NR	0
ODI		0.500	0	0	0	NR	NR	0
TRIS		TP	NR	NR	NR	NR	NR	0
TSCA		TP	NR	NR	NR	NR	NR	0
FTTS		TP	NR	NR	NR	NR	NR	0
SSTS		TP	NR	NR	NR	NR	NR	0
HIST FTTS		TP	NR	NR	NR	NR	NR	0
ICIS		TP	NR	NR	NR	NR	NR	0
LUCIS		0.500	0	0	0	NR	NR	0
RADINFO		TP	NR	NR	NR	NR	NR	0
LIENS 2		TP	NR	NR	NR	NR	NR	0
DOT OPS		TP	NR	NR	NR	NR	NR	0
CDL		TP	NR	NR	NR	NR	NR	0
PADS		TP	NR	NR	NR	NR	NR	0
MLTS		TP	NR	NR	NR	NR	NR	0
MINES		0.250	0	0	NR	NR	NR	0
FINDS	X	TP	NR	NR	NR	NR	NR	0
RAATS		TP	NR	NR	NR	NR	NR	0
<u>STATE AND LOCAL RECORDS</u>								
Hist Cal-Sites		1.000	0	0	0	0	NR	0
CA Bond Exp. Plan		1.000	0	0	0	0	NR	0
SCH		0.250	0	0	NR	NR	NR	0
Toxic Pits		1.000	0	0	0	0	NR	0
State Landfill		0.500	0	1	0	NR	NR	1
CA WDS		TP	NR	NR	NR	NR	NR	0
WMUDS/SWAT		0.500	0	0	0	NR	NR	0
Cortese	X	0.500	7	14	32	NR	NR	53

MAP FINDINGS SUMMARY

Database	Target Property	Search Distance (Miles)	< 1/8	1/8 - 1/4	1/4 - 1/2	1/2 - 1	> 1	Total Plotted
SWRCY		0.500	0	0	0	NR	NR	0
LUST	X	0.500	4	16	28	NR	NR	48
CA FID UST	X	0.250	3	10	NR	NR	NR	13
SLIC		0.500	1	3	9	NR	NR	13
CS	X	0.500	5	13	34	NR	NR	52
UST		0.250	0	4	NR	NR	NR	4
HIST UST	X	0.250	4	9	NR	NR	NR	13
LIENS		TP	NR	NR	NR	NR	NR	0
AST		0.250	0	3	NR	NR	NR	3
SWEEPS UST	X	0.250	3	11	NR	NR	NR	14
CHMIRS		TP	NR	NR	NR	NR	NR	0
Notify 65		1.000	1	0	1	11	NR	13
DEED		0.500	0	0	0	NR	NR	0
VCP		0.500	0	0	0	NR	NR	0
DRYCLEANERS		0.250	2	0	NR	NR	NR	2
WIP		0.250	0	0	NR	NR	NR	0
CDL		TP	NR	NR	NR	NR	NR	0
RESPONSE		1.000	0	0	0	0	NR	0
HAZNET	X	TP	NR	NR	NR	NR	NR	0
EMI	X	TP	NR	NR	NR	NR	NR	0
HAULERS		TP	NR	NR	NR	NR	NR	0
ENVIROSTOR		1.000	0	0	0	10	NR	10
<u>TRIBAL RECORDS</u>								
INDIAN RESERV		1.000	0	0	0	0	NR	0
INDIAN LUST		0.500	0	0	0	NR	NR	0
INDIAN UST		0.250	0	0	NR	NR	NR	0
<u>EDR PROPRIETARY RECORDS</u>								
Manufactured Gas Plants		1.000	0	0	0	2	NR	2
EDR Historical Auto Stations	X	0.250	17	25	NR	NR	NR	42
EDR Historical Cleaners		0.250	15	35	NR	NR	NR	50

NOTES:

TP = Target Property

NR = Not Requested at this Search Distance

Sites may be listed in more than one database

MAP FINDINGS

Map ID
 Direction
 Distance
 Distance (ft.)
 Elevation

Site

Database(s) EDR ID Number
 EPA ID Number

A1 **HARRISON ST. GARAGE**
Target **1432 HARRISON ST**
Property **OAKLAND, CA 94612**

HIST UST **U001599407**
 N/A

Site 1 of 9 in cluster A

Actual:
38 ft.

HIST UST:
 Region: STATE
 Facility ID: 00000012212
 Tank Num: 001
 Container Num: 005
 Year Installed: 1981
 Tank Capacity: 00001000
 Facility Type: Gas Station
 Other Type: Not reported
 Total Tanks: 0002
 Tank Used for: PRODUCT
 Type of Fuel: UNLEADED
 Tank Construction: Not reported
 Leak Detection: Stock Inventor
 Contact Name: MAXIMO VASQUEZ
 Telephone: 4154522440
 Owner Name: DOUGLAS PARKING CO.
 Owner Address: 1721 WEBSTER ST.
 Owner City,St,Zip: OAKLAND, CA 94612

Region: STATE
 Facility ID: 00000012212
 Tank Num: 002
 Container Num: 006
 Year Installed: Not reported
 Tank Capacity: 00001000
 Facility Type: Gas Station
 Other Type: Not reported
 Total Tanks: 0002
 Tank Used for: PRODUCT
 Type of Fuel: PREMIUM
 Tank Construction: Not reported
 Leak Detection: Stock Inventor
 Contact Name: MAXIMO VASQUEZ
 Telephone: 4154522440
 Owner Name: DOUGLAS PARKING CO.
 Owner Address: 1721 WEBSTER ST.
 Owner City,St,Zip: OAKLAND, CA 94612

A2 **ALVIN BACHARACH**
Target **1428-1434 HARRISON STREET**
Property **OAKLAND, CA 94612**

HAZNET **S103949697**
 N/A

Site 2 of 9 in cluster A

Actual:
38 ft.

HAZNET:
 Gepaid: CAC000728440
 Contact: ALVIN BACHARACH
 Telephone: 0000000000
 Facility Addr2: Not reported
 Mailing Name: Not reported
 Mailing Address: C/O MARK BORSUK/ATTORNEY
 Mailing City,St,Zip: SAN FRANCISCO, CA 941230000
 Gen County: 1

Map ID
Direction
Distance
Distance (ft.)
Elevation Site

MAP FINDINGS

Database(s) EDR ID Number
EPA ID Number

ALVIN BACHARACH (Continued)

S103949697

TSD EPA ID: CAD982042475
TSD County: Solano
Waste Category: Asbestos-containing waste
Disposal Method: Disposal, Land Fill
Tons: 1.6856
Facility County: 1

A3
Target
Property

DAVES SERVICE GARAGE
1432 HARRISON ST
OAKLAND, CA

EDR Historical Auto Stations 1009013045
N/A

Site 3 of 9 in cluster A

Actual:
38 ft.

EDR Historical Auto Stations:

Name: DAVES SERVICE GARAGE
Year: 1967
Type: AUTOMOBILE REPAIRING

A4
Target
Property

1X BORSUK, BARBARA
1432 HARRISON STREET
OAKLAND, CA 92101

HAZNET S100925742
EMI N/A

Site 4 of 9 in cluster A

Actual:
38 ft.

HAZNET:

Gepaid: CAC000598840
Contact: BORSUK, BARBARA
Telephone: 0000000000
Facility Addr2: Not reported
Mailing Name: Not reported
Mailing Address: 383 DEABLO ROAD
Mailing City,St,Zip: DANVILLE, CA 945260000
Gen County: 1
TSD EPA ID: CAD043260702
TSD County: San Mateo
Waste Category: Unspecified oil-containing waste
Disposal Method: Recycler
Tons: 1.4595
Facility County: 1

EMI:

Year: 2002
Carbon Monoxide Emissions Tons/Yr: 1
Air Basin: SF
Facility ID: 13071
Air District Name: BA
SIC Code: 8732
Air District Name: BAY AREA AQMD
Community Health Air Pollution Info System: Not reported
Consolidated Emission Reporting Rule: Not reported
Total Organic Hydrocarbon Gases Tons/Yr: 0
Reactive Organic Gases Tons/Yr: 0
Carbon Monoxide Emissions Tons/Yr: 0
NOX - Oxides of Nitrogen Tons/Yr: 0
SOX - Oxides of Sulphur Tons/Yr: 0
Particulate Matter Tons/Yr: 0

Map ID
Direction
Distance
Distance (ft.)
Elevation Site

MAP FINDINGS

Database(s) EDR ID Number
EPA ID Number

1X BORSUK, BARBARA (Continued)

S100925742

Part. Matter 10 Micrometers & Smllr Tons/Yr: 0

Year: 2003
Carbon Monoxide Emissions Tons/Yr: 1
Air Basin: SF
Facility ID: 13071
Air District Name: BA
SIC Code: 8732
Air District Name: BAY AREA AQMD
Community Health Air Pollution Info System: Not reported
Consolidated Emission Reporting Rule: Not reported
Total Organic Hydrocarbon Gases Tons/Yr: 0
Reactive Organic Gases Tons/Yr: 0
Carbon Monoxide Emissions Tons/Yr: 0
NOX - Oxides of Nitrogen Tons/Yr: 0
SOX - Oxides of Sulphur Tons/Yr: 0
Particulate Matter Tons/Yr: 0
Part. Matter 10 Micrometers & Smllr Tons/Yr: 0

Year: 2004
Carbon Monoxide Emissions Tons/Yr: 1
Air Basin: SF
Facility ID: 13071
Air District Name: BA
SIC Code: 8732
Air District Name: BAY AREA AQMD
Community Health Air Pollution Info System: Not reported
Consolidated Emission Reporting Rule: Not reported
Total Organic Hydrocarbon Gases Tons/Yr: 0.022
Reactive Organic Gases Tons/Yr: 0.0153692
Carbon Monoxide Emissions Tons/Yr: 0
NOX - Oxides of Nitrogen Tons/Yr: 0
SOX - Oxides of Sulphur Tons/Yr: 0
Particulate Matter Tons/Yr: 0
Part. Matter 10 Micrometers & Smllr Tons/Yr: 0

Year: 2005
Carbon Monoxide Emissions Tons/Yr: 1
Air Basin: SF
Facility ID: 13071
Air District Name: BA
SIC Code: 8732
Air District Name: BAY AREA AQMD
Community Health Air Pollution Info System: Not reported
Consolidated Emission Reporting Rule: Not reported
Total Organic Hydrocarbon Gases Tons/Yr: .012
Reactive Organic Gases Tons/Yr: .0083832
Carbon Monoxide Emissions Tons/Yr: 0
NOX - Oxides of Nitrogen Tons/Yr: 0
SOX - Oxides of Sulphur Tons/Yr: 0
Particulate Matter Tons/Yr: 0
Part. Matter 10 Micrometers & Smllr Tons/Yr: 0

MAP FINDINGS

Map ID
Direction
Distance
Distance (ft.)
Elevation

Site

Database(s)

EDR ID Number
EPA ID Number

A5
Target
Property

MARK BORSUK ESQ
1432 HARRISON STREET
OAKLAND, CA 94612

FINDS **1008201952**
110021102698

Actual:
38 ft.

Site 5 of 9 in cluster A

FINDS:
Other Pertinent Environmental Activity Identified at Site

The NEI (National Emissions Inventory) database contains information on stationary and mobile sources that emit criteria air pollutants and their precursors, as well as hazardous air pollutants (HAPs).

A6
Target
Property

ROYS AUTO BODY
1432 HARRISON ST
OAKLAND, CA 94612

RCRA-SQG **1000373867**
FINDS **CAD982039125**
HAZNET

Actual:
38 ft.

Site 6 of 9 in cluster A

RCRAInfo:
Owner: **ROY FEGARD**
 (415) 555-1212
EPA ID: **CAD982039125**
Contact: **Not reported**
Classification: **Small Quantity Generator**
TSDF Activities: **Not reported**
Violation Status: **No violations found**

FINDS:
Other Pertinent Environmental Activity Identified at Site

RCRAInfo is a national information system that supports the Resource Conservation and Recovery Act (RCRA) program through the tracking of events and activities related to facilities that generate, transport, and treat, store, or dispose of hazardous waste. RCRAInfo allows RCRA program staff to track the notification, permit, compliance, and corrective action activities required under RCRA.

HAZNET:
Gepaid: **CAD982039125**
Contact: **Not reported**
Telephone: **0000000000**
Facility Addr2: **Not reported**
Mailing Name: **Not reported**
Mailing Address: **1432 HARRISON ST**
Mailing City,St,Zip: **OAKLAND, CA 946120000**
Gen County: **1**
TSD EPA ID: **CAT000613893**
TSD County: **Los Angeles**
Waste Category: **Oxygenated solvents (acetone, butanol, ethyl acetate, etc.)**
Disposal Method: **Not reported**
Tons: **.0135**
Facility County: **1**

MAP FINDINGS

Map ID
 Direction
 Distance
 Distance (ft.)
 Elevation Site

Database(s)
 EDR ID Number
 EPA ID Number

A7 **HARRISON STREET GARAGE**
Target **1432 HARRISON ST**
Property **OAKLAND, CA 94612**

HIST UST **U001599408**
 N/A

Site 7 of 9 in cluster A

Actual:
38 ft.

HIST UST:
 Region: STATE
 Facility ID: 00000067715
 Tank Num: 001
 Container Num: 1
 Year Installed: 1981
 Tank Capacity: 00001000
 Facility Type: Gas Station
 Other Type: PARKING
 Total Tanks: 0001
 Tank Used for: WASTE
 Type of Fuel: 1
 Tank Construction: Unkown centimeters
 Leak Detection: Stock Inventor
 Contact Name: RONALD S. DOUGLAS
 Telephone: 4154447412
 Owner Name: DOUGLAS MOTOR SERVICE (A PARTN
 Owner Address: 1721 WEBSTER ST.
 Owner City,St,Zip: OAKLAND, CA 94612

A8 **A BACHARACH TR & B BORSUK**
Target **1432 HARRISON ST**
Property **OAKLAND, CA 94612**

LUST **S101624491**
Cortese **N/A**
CA FID UST
 CS
SWEEPS UST

Site 8 of 9 in cluster A

Actual:
38 ft.

LUST:
 Region: STATE
 Case Type: Other ground water affected
 Cross Street: Not reported
 Enf Type: Not reported
 Funding: Not reported
 How Discovered: OM
 How Stopped: Other Means
 Leak Cause: Unknown
 Leak Source: Unknown
 Global Id: T0600100682
 Stop Date: 9999-09-09 00:00:00
 Confirm Leak: 1994-02-22 00:00:00
 Workplan: 1994-04-08 00:00:00
 Prelim Assess: 1995-02-10 00:00:00
 Pollution Char: 1994-09-01 00:00:00
 Remed Plan: Not reported
 Remed Action: Not reported
 Monitoring: Not reported
 Close Date: Not reported
 Discover Date: 1990-08-18 00:00:00
 Enforcement Dt: Not reported
 Release Date: 1990-08-21 00:00:00
 Review Date: Not reported
 Enter Date: Not reported
 MTBE Date: Not reported
 GW Qualifier: Not reported
 Soil Qualifier: Not reported

Map ID
Direction
Distance
Distance (ft.)
Elevation Site

MAP FINDINGS

Database(s) EDR ID Number
EPA ID Number

A BACHARACH TR & B BORSUK (Continued)

S101624491

Max MTBE GW ppb: Not reported
Max MTBE Soil ppb: Not reported
County: 1
Org Name: Not reported
Reg Board: San Francisco Bay Region
Status: Preliminary site assessment underway
Chemical: Gasoline
Contact Person: Not reported
Responsible Party: MARK BORSUK
RP Address: 1626 VALLEJO ST
Interim: Not reported
Oversight Prgm: LUST
MTBE Class: *
MTBE Conc: 0
MTBE Fuel: 1
MTBE Tested: MTBE Detected. Site tested for MTBE and MTBE detected
Staff: Not reported
Staff Initials: DH
Lead Agency: Local Agency
Local Agency: 01000L
Hydr Basin #: Not reported
Beneficial: MUN
Priority: 4
Cleanup Fund Id: Not reported
Work Suspended: Not reported
Local Case #: RO0000266
Case Number: 01-0739
Qty Leaked: 0
Abate Method: Not reported
Operator: Not reported
Water System Name: Not reported
Well Name: Not reported
Distance To Lust: 0
Waste Discharge Global ID: Not reported
Waste Disch Assigned Name: Not reported
Summary: LUFT Con. LC 3HSCAW

LUST:

Region: 2
Facility Status: Pollution Characterization
Facility Id: 01-0739
Case Number: 498
How Discovered: Tank Closure
Leak Cause: Structure Failure
Leak Source: Tank
Date Leak Confirmed: Not reported
Oversight Program: LUST
Prelim. Site Assesment Wokplan Submitted: 2/15/1991
Preliminary Site Assesment Began: Not reported
Pollution Characterization Began: 6/16/1998
Pollution Remediation Plan Submitted: Not reported
Date Remediation Action Underway: Not reported
Date Post Remedial Action Monitoring Began: Not reported

Cortese:
Region: CORTESE

Map ID
Direction
Distance
Distance (ft.)
Elevation Site

MAP FINDINGS

Database(s) EDR ID Number
EPA ID Number

A BACHARACH TR & B BORSUK (Continued)

S101624491

Facility Addr2: 1432 HARRISON ST

CA FID UST:

Facility ID: 01000866
Regulated By: UTNKA
Regulated ID: 00067715
Cortese Code: Not reported
SIC Code: Not reported
Facility Phone: 4154447412
Mail To: Not reported
Mailing Address: 1721 WEBSTER ST
Mailing Address 2: Not reported
Mailing City,St,Zip: OAKLAND 94612
Contact: Not reported
Contact Phone: Not reported
DUNs Number: Not reported
NPDES Number: Not reported
EPA ID: Not reported
Comments: Not reported
Status: Active

CS:

Record Id: RO0000266
PE: 5602
Status: Leak being confirmed

Record Id: RO0000266
PE: 5602
Status: Preliminary site assessment workplan submitted

Record Id: RO0000266
PE: 5602
Status: Preliminary site assessment underway

Record Id: RO0000266
PE: 5602
Status: Pollution Characterization

SWEEPS UST:

Status: A
Comp Number: 67715
Number: 9
Board Of Equalization: 44-000755
Ref Date: 07-01-85
Act Date: Not reported
Created Date: 02-29-88
Tank Status: A
Owner Tank Id: 1
Swrcb Tank Id: 01-000-067715-000001
Actv Date: 07-01-85
Capacity: 1000
Tank Use: M.V. FUEL
Stg: P
Content: REG UNLEADED
Number Of Tanks: 3

Map ID
Direction
Distance
Distance (ft.)
Elevation Site

MAP FINDINGS

Database(s) EDR ID Number
EPA ID Number

A BACHARACH TR & B BORSUK (Continued)

S101624491

Status: A
Comp Number: 67715
Number: 9
Board Of Equalization: 44-000755
Ref Date: 07-01-85
Act Date: Not reported
Created Date: 02-29-88
Tank Status: A
Owner Tank Id: 5
Swrcb Tank Id: 01-000-067715-000002
Actv Date: 07-01-85
Capacity: 1000
Tank Use: M.V. FUEL
Stg: P
Content: REG UNLEADED
Number Of Tanks: Not reported

Status: A
Comp Number: 67715
Number: 9
Board Of Equalization: 44-000755
Ref Date: 07-01-85
Act Date: Not reported
Created Date: 02-29-88
Tank Status: A
Owner Tank Id: 6
Swrcb Tank Id: 01-000-067715-000003
Actv Date: 07-01-85
Capacity: 1000
Tank Use: M.V. FUEL
Stg: P
Content: REG UNLEADED
Number Of Tanks: Not reported

A9
WNW
< 1/8
18 ft.

**EDWARDS H V
1437 HARRISON ST
OAKLAND, CA**

**EDR Historical Cleaners 1009142649
N/A**

Site 9 of 9 in cluster A

**Relative:
Higher**

**Actual:
38 ft.**

EDR Historical Cleaners:
Name: EDWARDS H V
Year: 1925
Type: CLEANERS DYERS AND PRESSERS

Name: EDWARDS H V
Year: 1933
Type: CLOTHES PRESSERS AND CLEANERS