

SOIL TECH ENGINEERING

Environmental and Geological Engineers

1761 JUNCTION AVENUE, SAN JOSE, CA 95112

(408) 441-1881

DATE: 8/21/96 TIME: 9²⁰

TO: Alameda County

ATTN: Mr. Barney M. Chan

RE: 3609 E. 14th. st. Oakland

FAX #: (510) 337-9335 PAGE: 3 (COVER PAGE INCLUDE)

FROM: Noori Ameli

OUR FAX #: (408) 441-0705

NOTE: _____

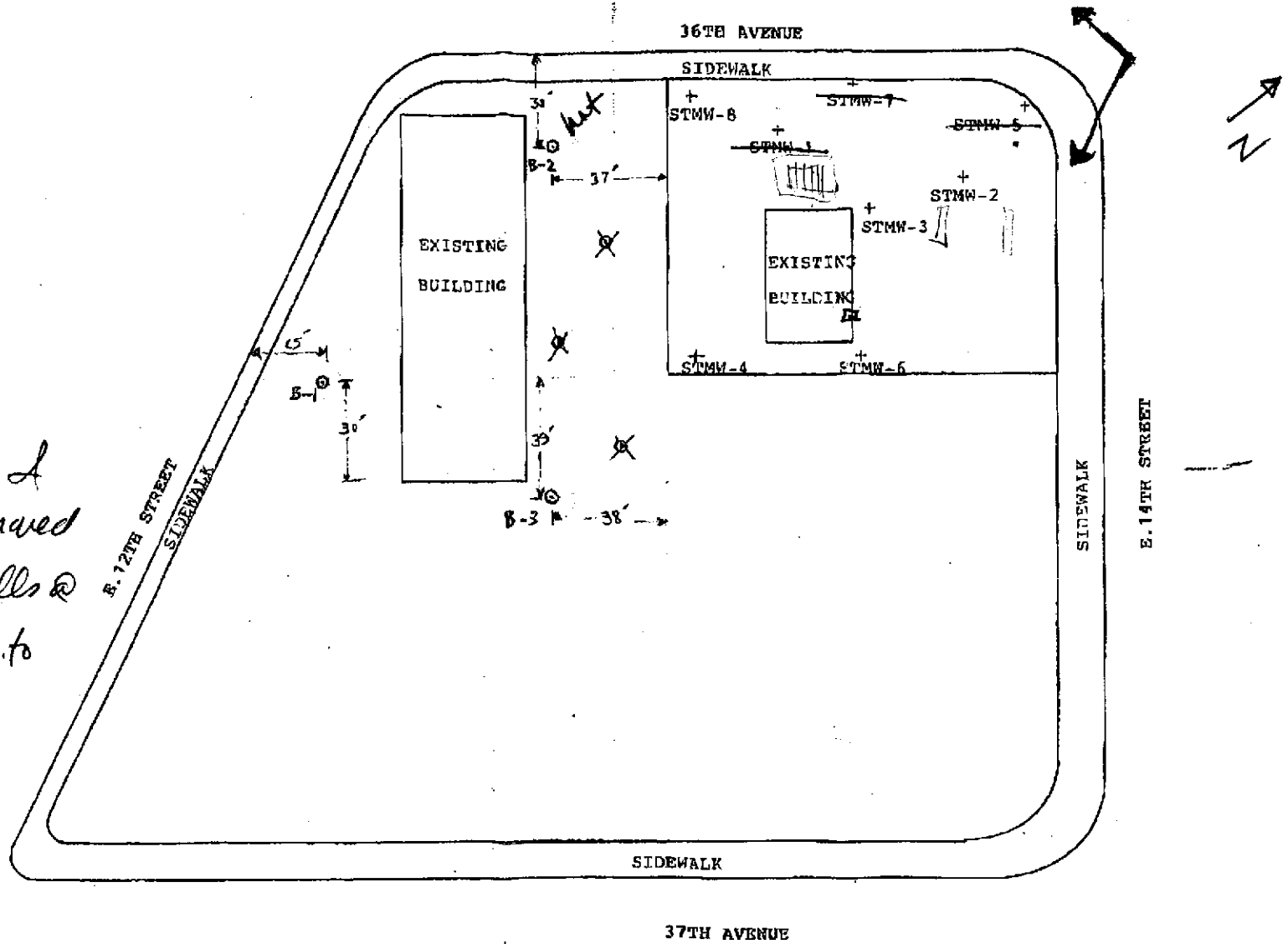
PLEASE CALL (408) 441-1881 IF YOU DO NOT RECEIVE ALL THE PAGES.

Barney M. Chau

(510) 567-6765

(510) 837-9335

Re -
on 8/22/96 I
verbally approved
installing wells @
B-1 + B-3 to
Soil Tech Support staff.



LEGEND

- ⊙ PROPOSED EXPLORATORY BORING/MONITORING WELL
- + EXISTING MONITORING WELL

TONY'S EXPRESS AUTO	
SCALE: 1"=40'	7-92-51
DATE: 7/1/96	
3609 E. 14TH STREET	
SOIL TECH ENGINEERING INC	

15103379335 P.02 TO FROM 08-21-1996 09:14AM



PRIORITY ENVIRONMENTAL LABS

Precision Environmental Analytical Laboratory

August 16, 1996

PEL # 9608027

SOIL TECH ENGINEERING

Attn: Noori Ameli

Re: Three water and three soil samples for Gasoline/BTEX analysis.

Project name: 3609 E. 14th St., - Oakland

Project number: 7-92-514-SA

Date sampled: Aug 13, 1996

Date submitted: Aug 14, 1996

Date extracted: Aug 14-15, 1996

Date analyzed: Aug 14-15, 1996

RESULTS:

SAMPLE I.D.	Gasoline (ug/L)	Benzene (ug/L)	Toluene (ug/L)	Ethyl Benzene (ug/L)	Total Xylene (ug/L)
WB-1	16000	55	2.3	43	43
WB-2	340000	2700	1900	2700	5900
WB-3	3000	15	3.3	14	14
Detection Limit	50	0.5	0.5	0.5	0.5
Method of Analysis	5030 / 8015	602	602	602	602
SAMPLE I.D.	Gasoline (ug/Kg)	Benzene (ug/Kg)	Toluene (ug/Kg)	Ethyl Benzene (ug/Kg)	Total Xylene (ug/Kg)
B-1-10	N.D.	N.D.	N.D.	N.D.	N.D.
B-2-10	240	390	210	430	940
B-3-10	N.D.	N.D.	N.D.	N.D.	N.D.
Blank Spiked	N.D.	N.D.	N.D.	N.D.	N.D.
Recovery	86.9%	82.0%	94.0%	106.8%	112.4%
Detection limit	1.0	5.0	5.0	5.0	5.0
Method of Analysis	5030 / 8015	8020	8020	8020	8020


David Duong
Laboratory Director

1764 Houret Court Milpitas, CA. 95035

Tel: 408-946-9636

Fax: 408-946-9663