

AMADOR VALLEY BLVD.

VALLEY PARKWAY

1ST LIFT

2ND LIFT

3RD LIFT

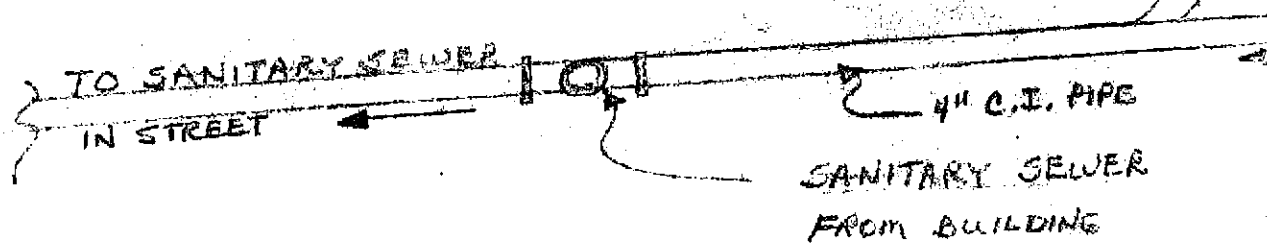
4TH LIFT

5TH LIFT

5 SECTIONS EXCAVATED TO PEA GRAVEL AND COMPACTED BACK IN ONE FOOT LIFTS. EACH SECTION WAS EXCAVATED & REPLACED & COMPACTED SEPERATELY.

SHELL SERVICE STATION
7194 AMADOR VALLEY BLVD.
DUBLIN, CALIFORNIA

CLEANOUT



EXCAVATION FOR BASEMENT

$82' \times 24' \times 7' = 502 \text{ CU. YDS.}$

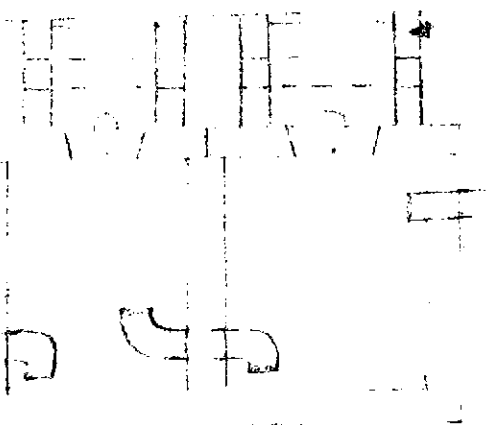
$200' \times 3' \times 15' = 20 \text{ CU. YDS (FTG.)}$

TOTAL = 522 CU. YDS.

A RESPIRATOR & NECESSARY SUPPLIES & EQUIPMENT WILL BE ON SITE UNTIL EXCAVATION HAS BEEN COMPLETED.

John Read / J.M.C. Const.
4/21/88

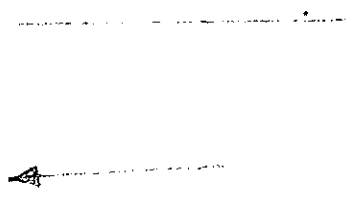
BOX



2-COMPARTMENT SEDIMENT
CLARIFIER
(600 GALL.)

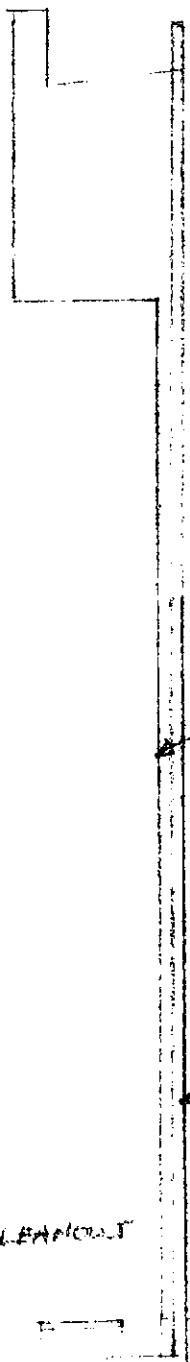
SEE ADDITIONAL CUT SHEET
WITH DIMENSIONS

36" CONCRETE RING



3" C.I. PIPE FROM LINE MAIN
TO THE CLARIFIER

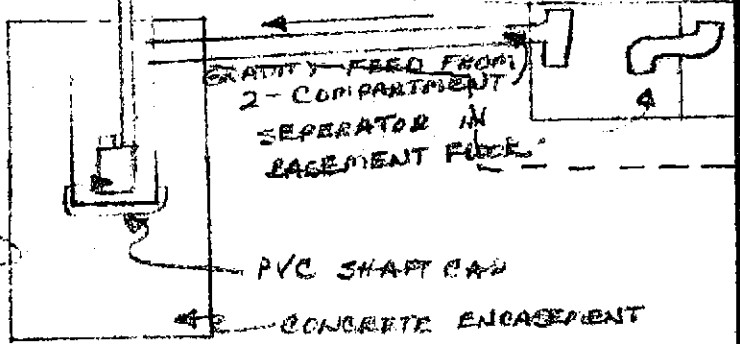
CLEANOUT



BUILDING EXTERIOR

VENT
FOR SUMP
PUMP EXHAUST

15' PVC
SHAFT



SUMP PUMP

PVC SHAFT AND

CONCRETE ENCASMENT

CLARIFIER & SANITARY CONNECTION		
SCALE:	APPROVED BY:	DRAWN BY JVR
DATE: 4/11/86		REVISED
OIL CHANGERS' FACILITY		
3858 RAILROAD AVE. PITTSBURGH		DRAWING NUMBER

55 MH
INV = 121.3
RIM = 336.53

336.48

336.72

A.C. Pavement

336.72 336.86 336.87 336.80

N40° 27' 19" W

WM. STN.

TRASH

339.2

Summ
C.O.
con. pod
10'x9'

338.98
Conc

336.35

88.19 (88.30)

337.06

338.52

One Story
Gas Station Bldg
FF = 338.8

A.C. Pavement

Planter

PLANTING

Rim
C.B.
337.6

336.79

337.40

57'00W

336.5

337.03

FFI. 338.5

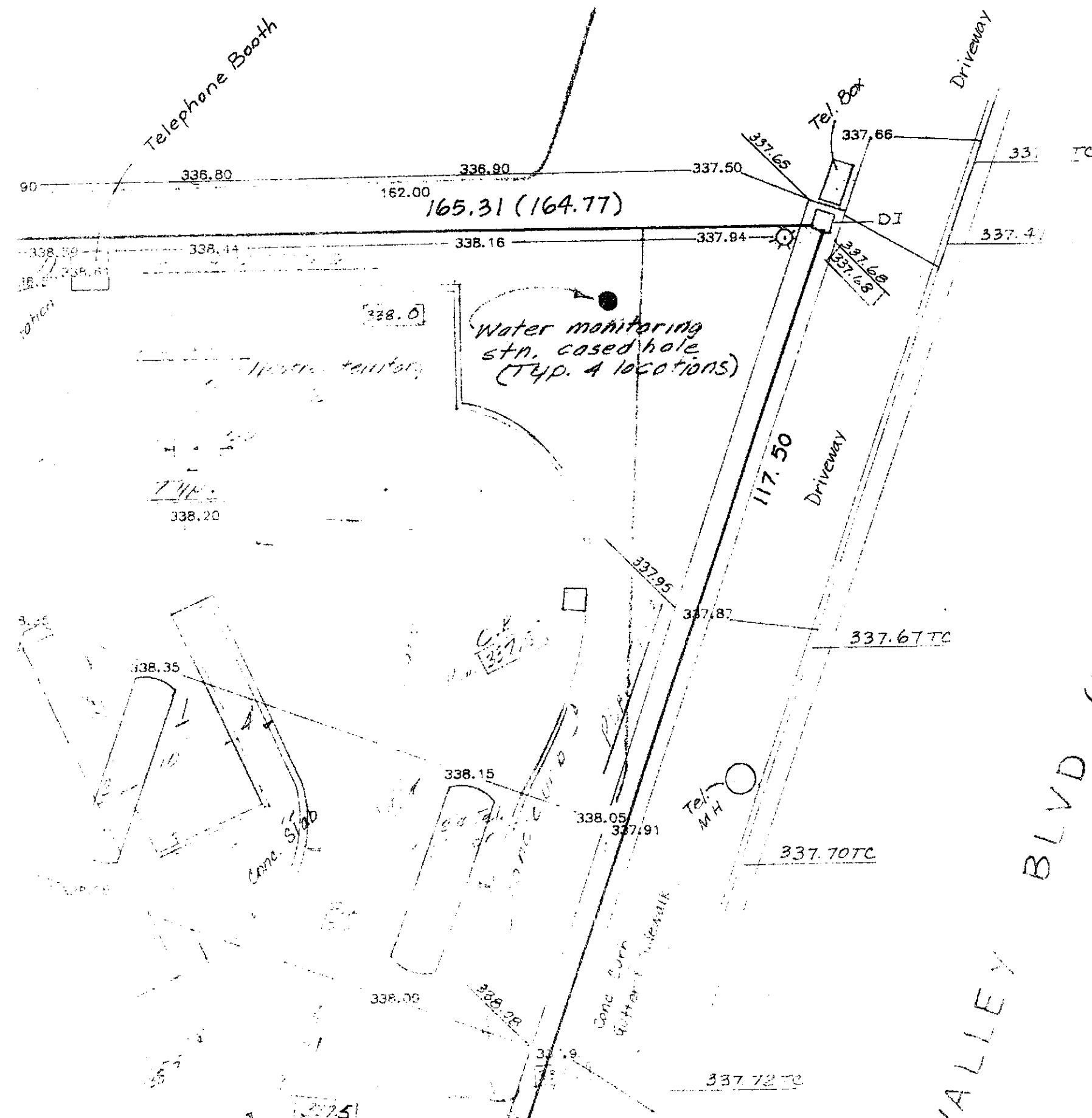
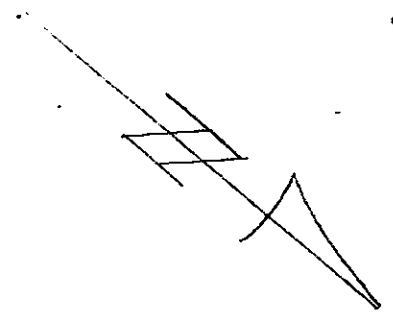
338

A.C. Pavement

338.2

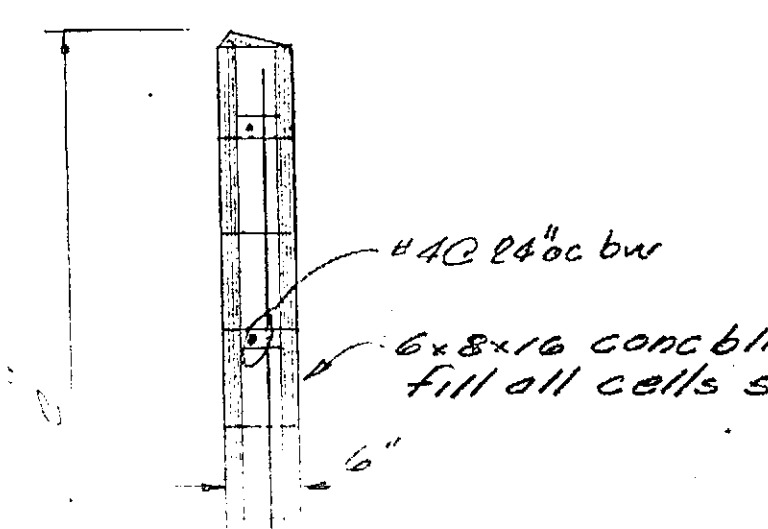
ENTR

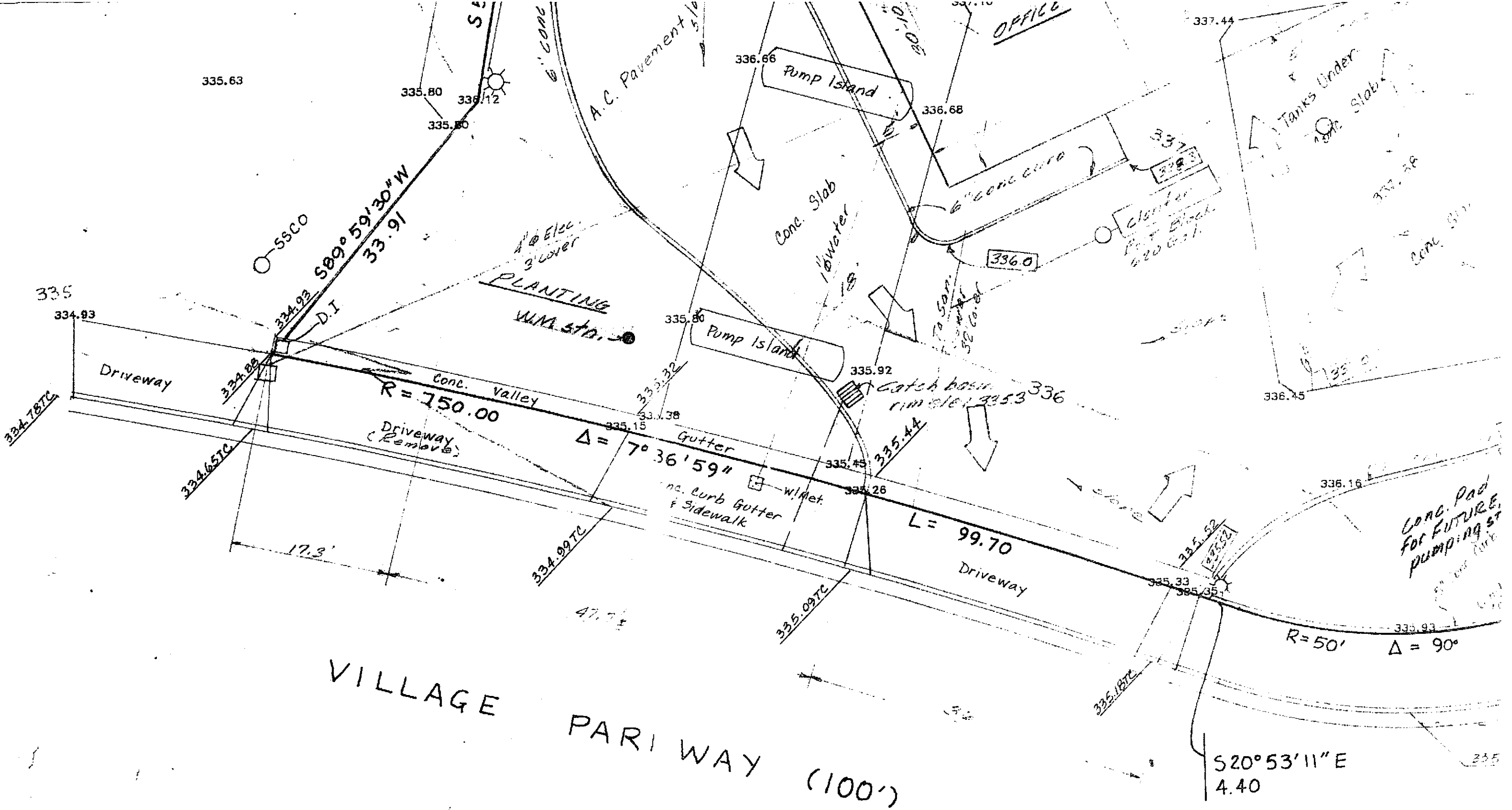
Scale: 1" = 10'

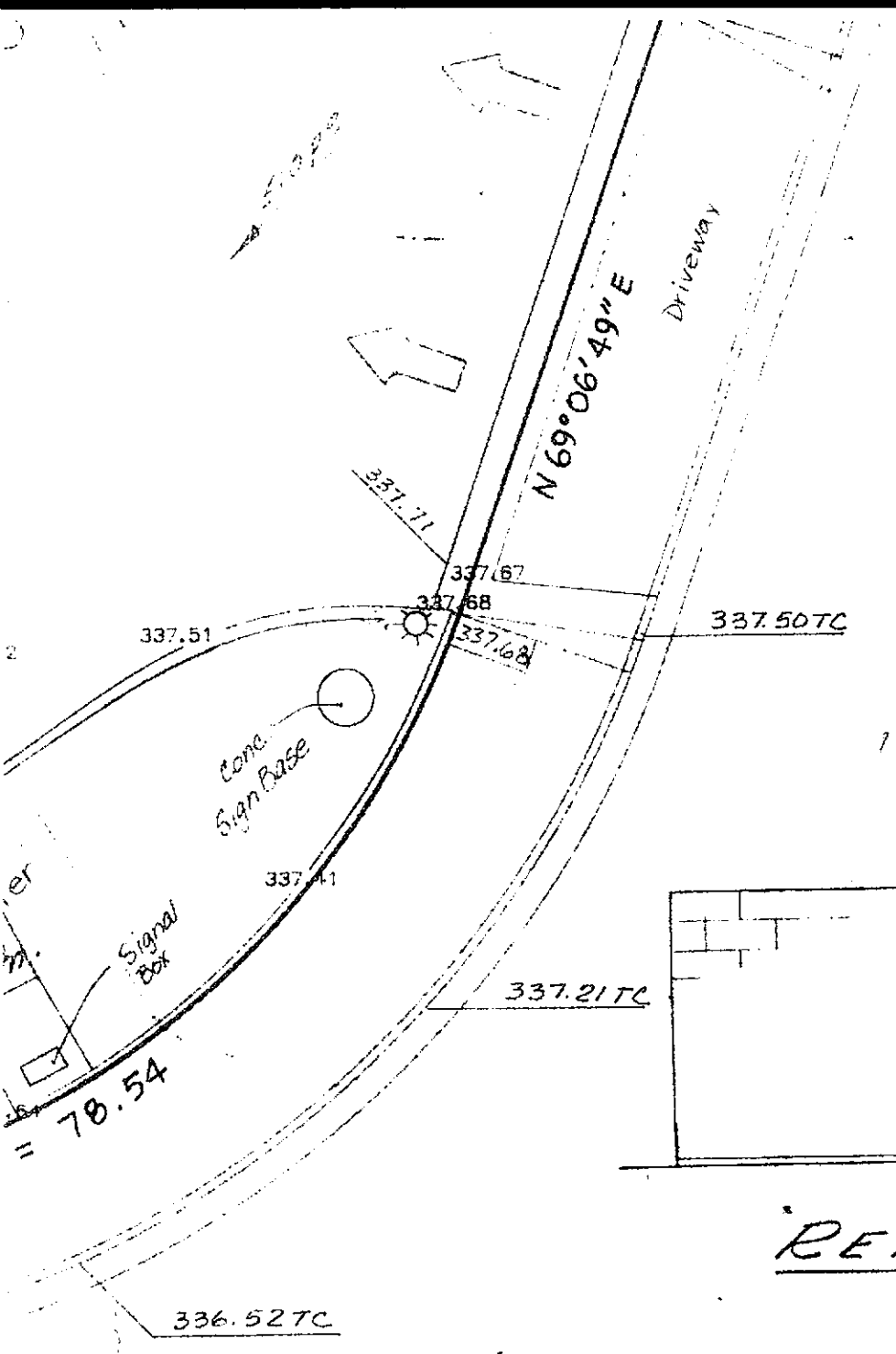


C/B AC Pav

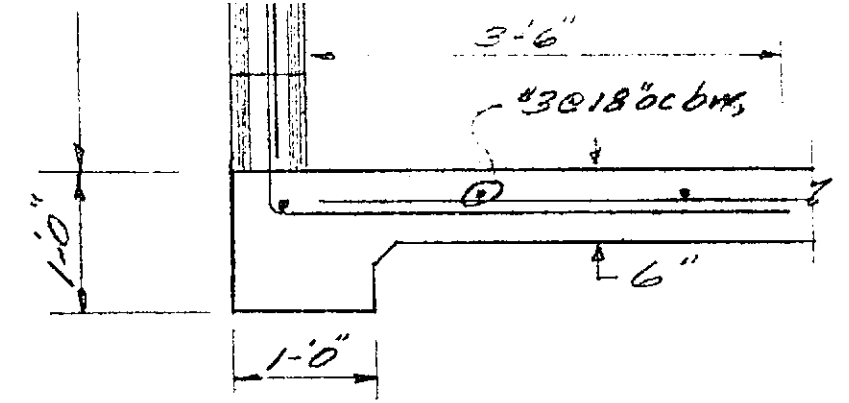
TYP. PAV. 52



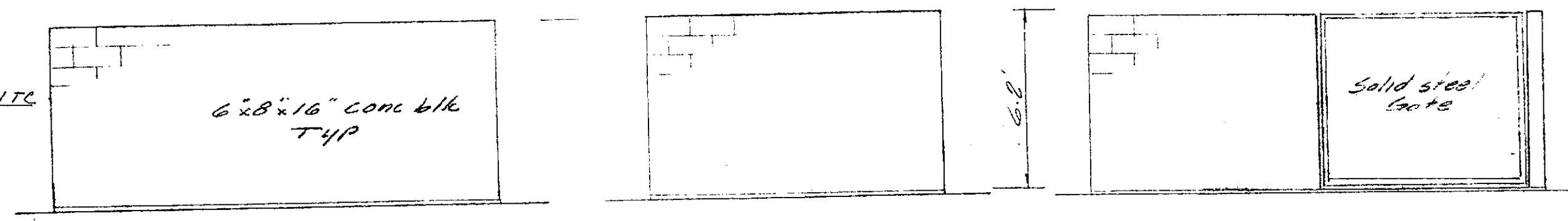




AMADOR



TYP. SECT.
Scale 3/4" = 1'-0"



REAR ELEV.

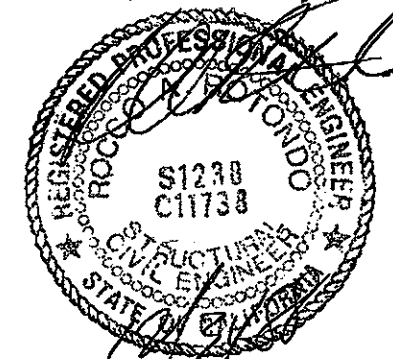
END ELEV.

FRONT ELEV.

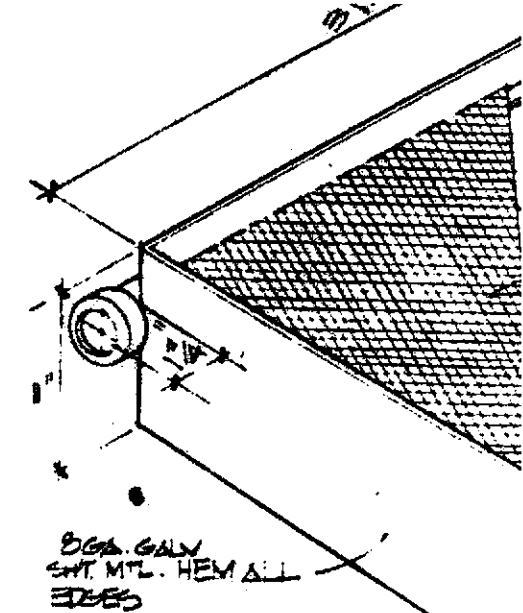
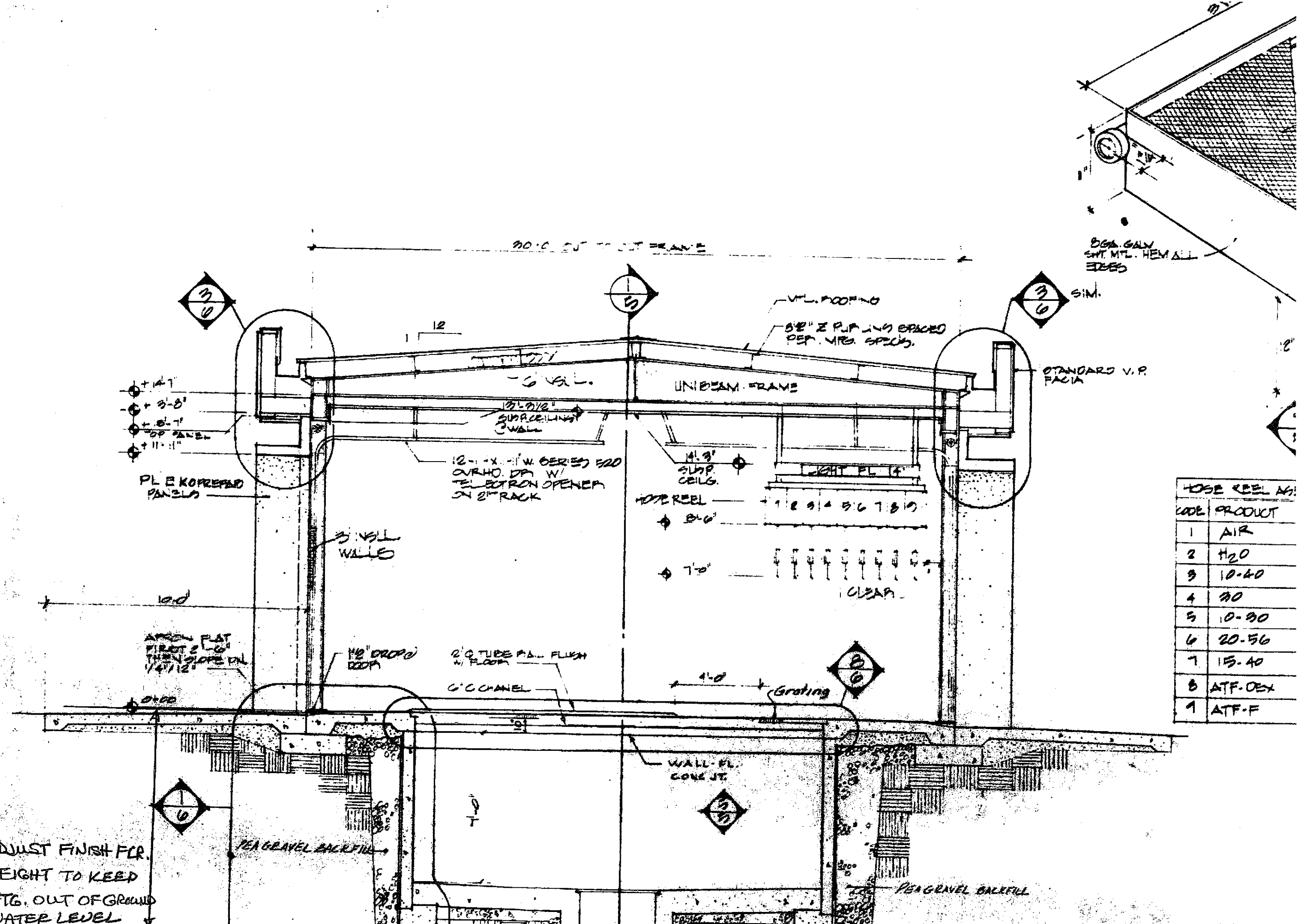
TRASH ENCLOSURE
Scale 1/4" = 1'-0"

SITE SURVEY
LANDS of LMC

AMADOR VALLEY BLVD. at VILLAGE PARKWAY
(A.P. No. 941-210-1-7)
DUBLIN, ALAMEDA COUNTY, CALIFORNIA



SAMUEL KUSHNER
LAND SURVEYOR
21 Diaz Place
Oakland, CA 94612
415-339-1728
March, 1987



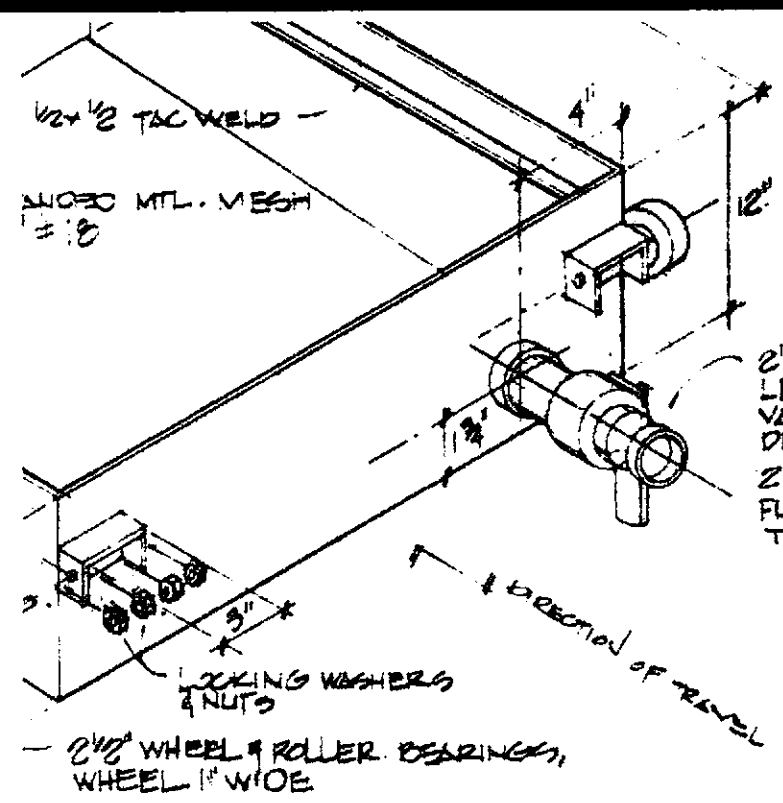
- +14'
- +9'-8"
- +8'-7"
- +6'-7"
- +11'-11"

PL E KOREX PD PANELS

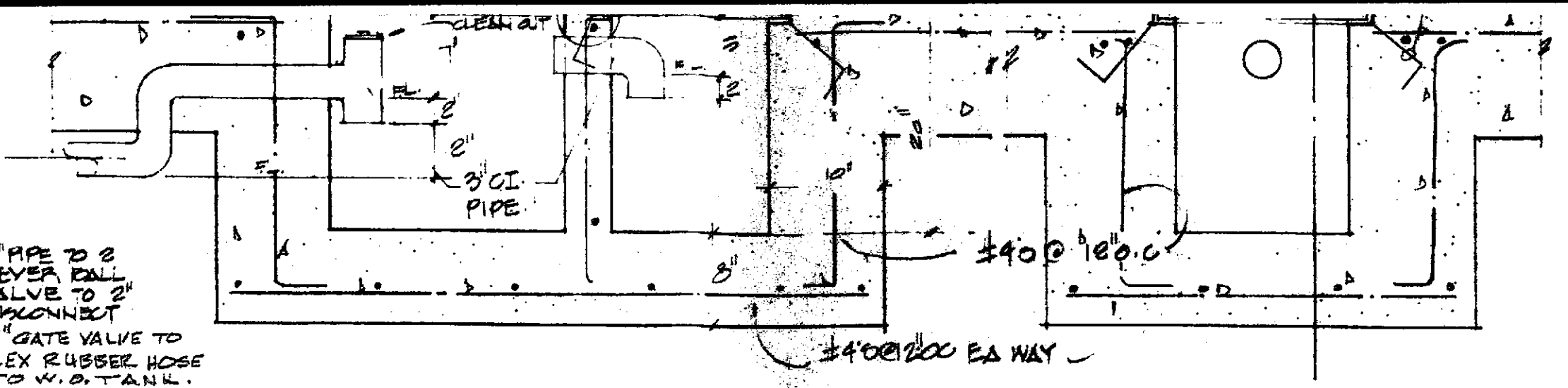
APRON FLAT FIRST 2' LG THEN SLOPE DN 1/4" / 12"

ADJUST FINISH FLR. HEIGHT TO KEEP FTG. OUT OF GROUND WATER LEVEL

HOSE REEL AG.	
CODE	PRODUCT
1	AIR
2	H ₂ O
3	10-40
4	30
5	10-30
6	20-56
7	15-40
8	ATF-OEX
9	ATF-F



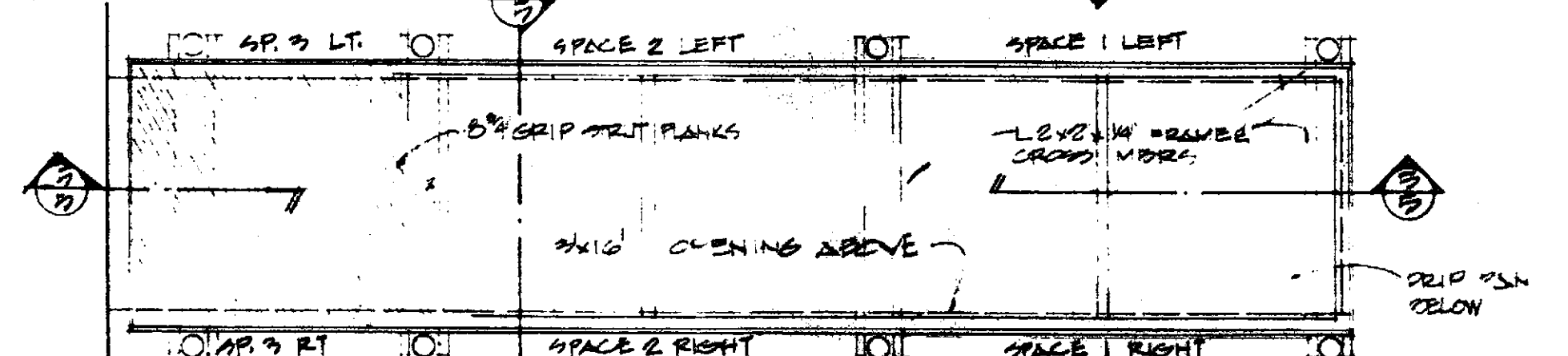
2" PIPE TO 2 LEVER BALL VALVE TO 2" DISCONNECT 2" GATE VALVE TO FLEX RUBBER HOSE TO W.O. TANK.



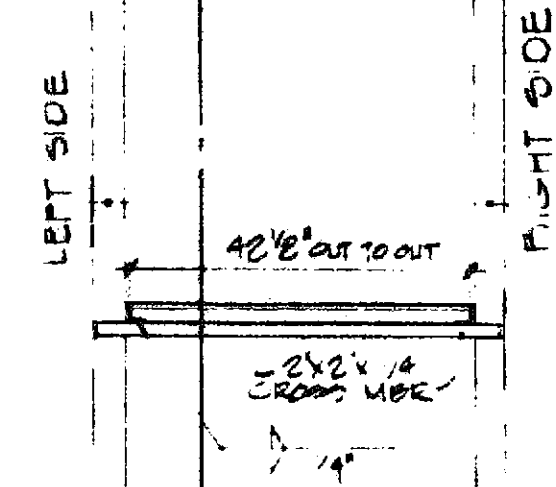
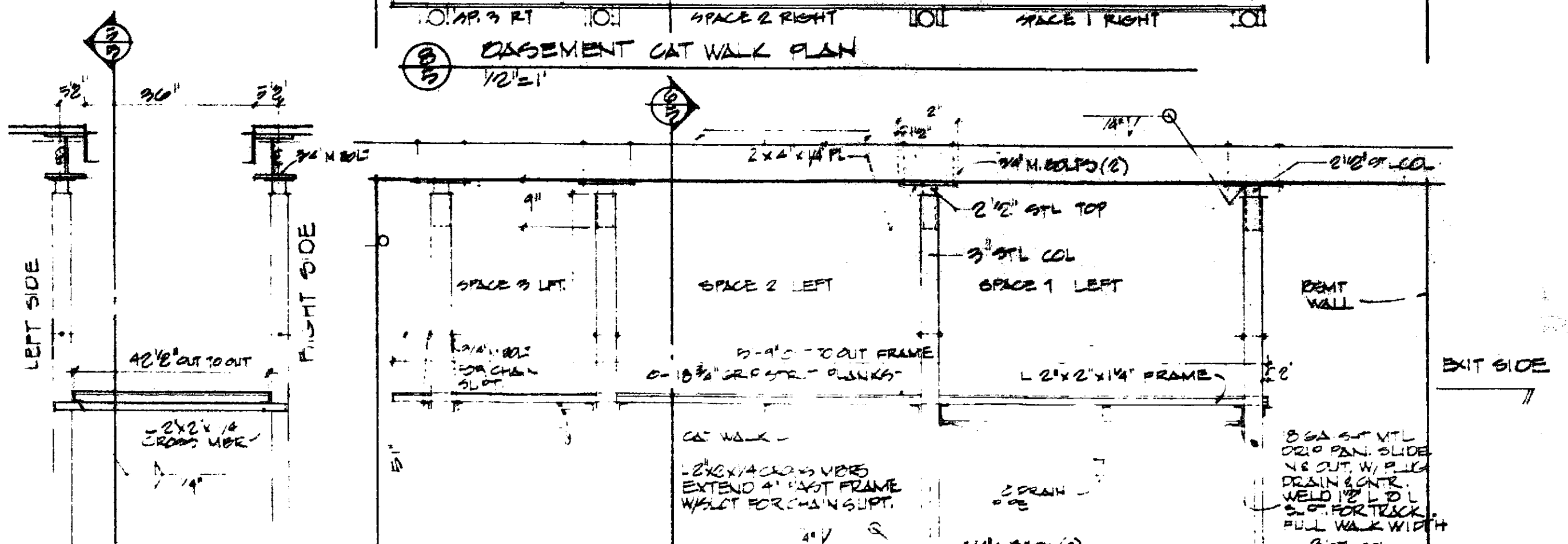
CLING OIL PAN
0 RUBLE

SCHEDULE
NOZZLE

10/5 CLING OIL PAN SECTION 1"=1' 11/5 CATCH BASIN SECTION 1"=1'



8/5 BASEMENT CAT WALK PLAN 1/2\"/>

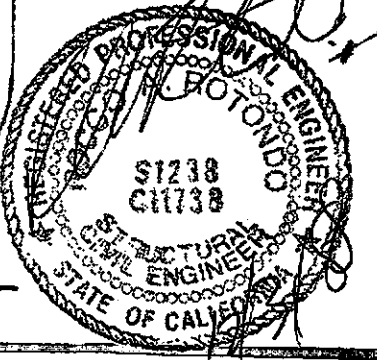
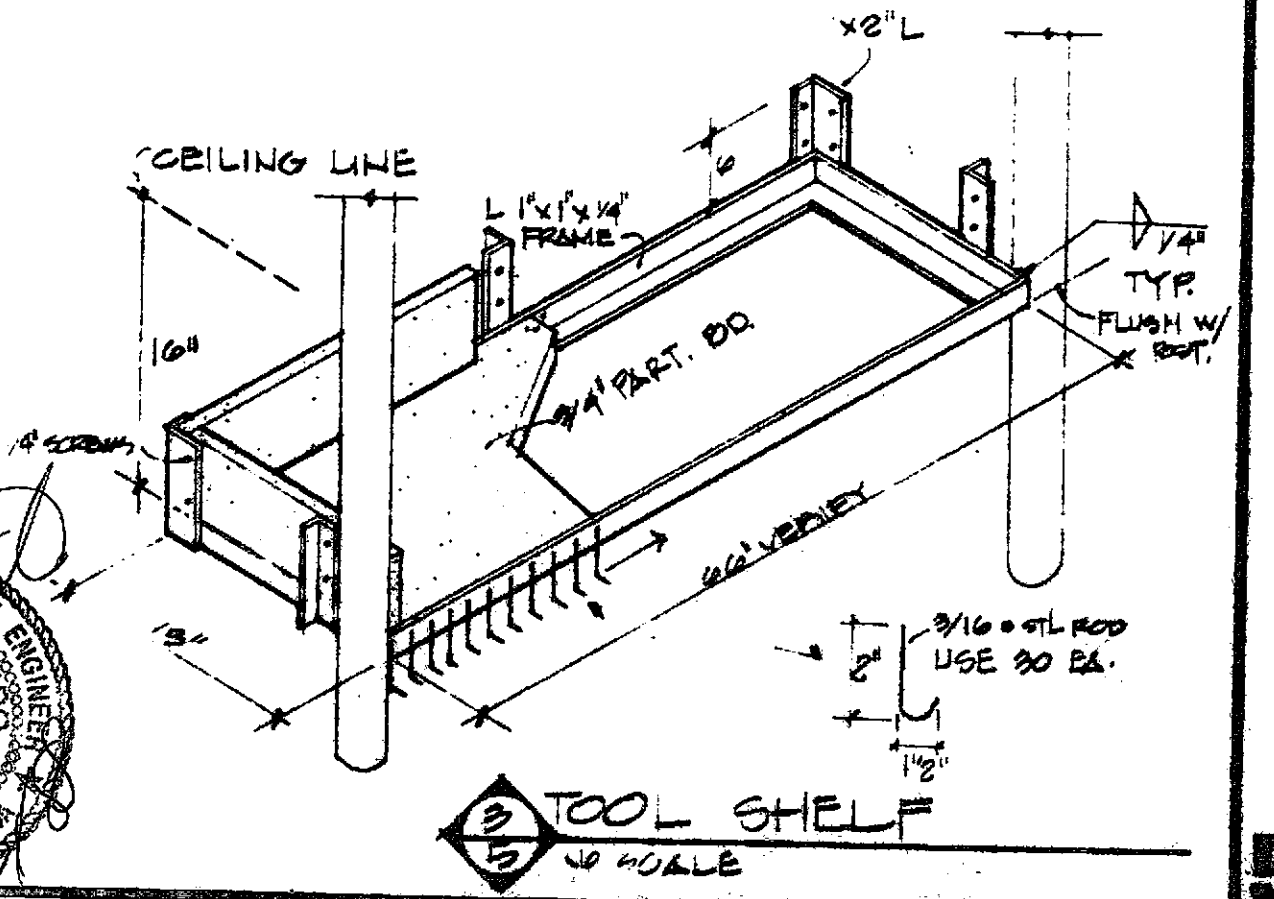
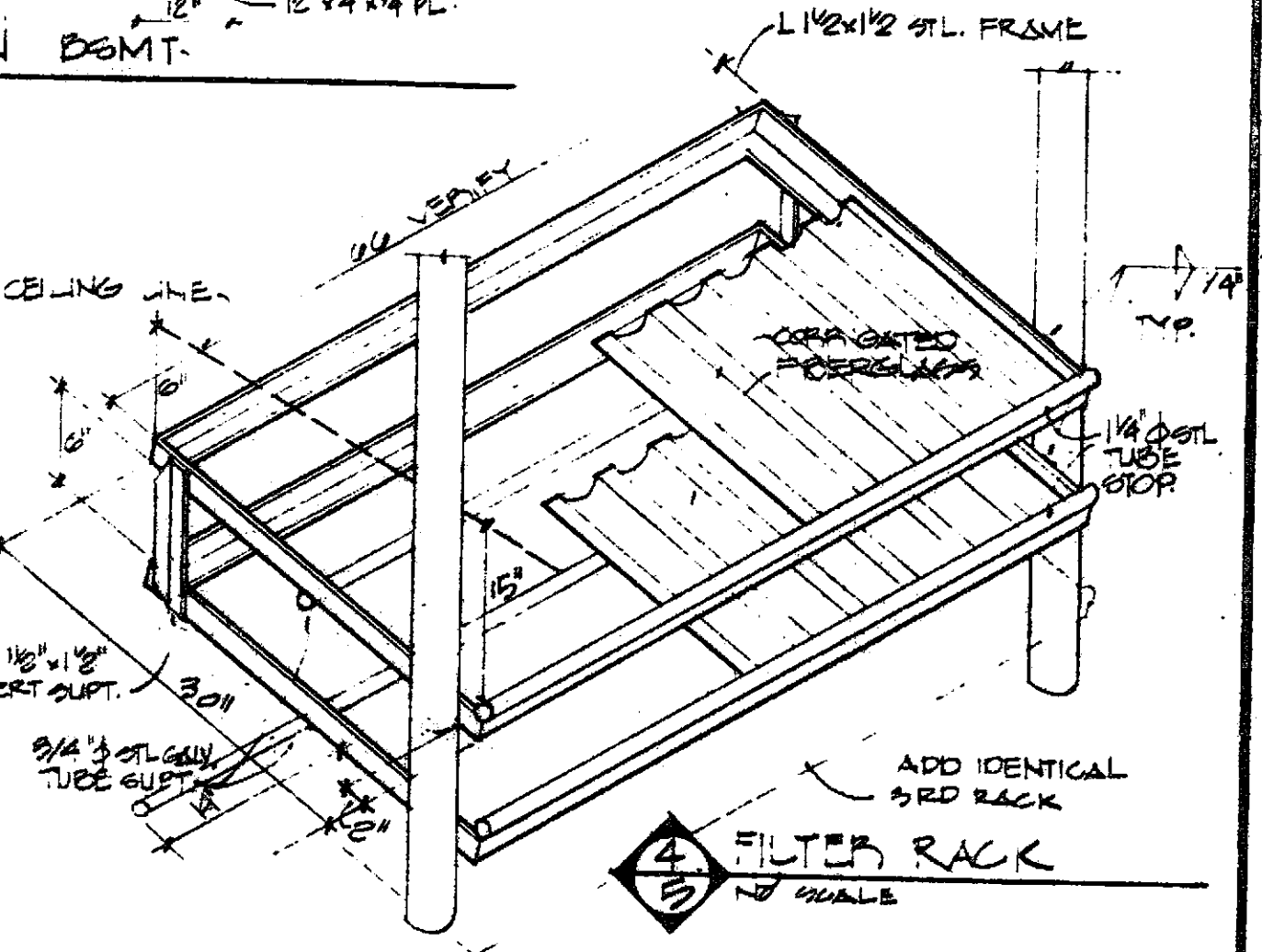
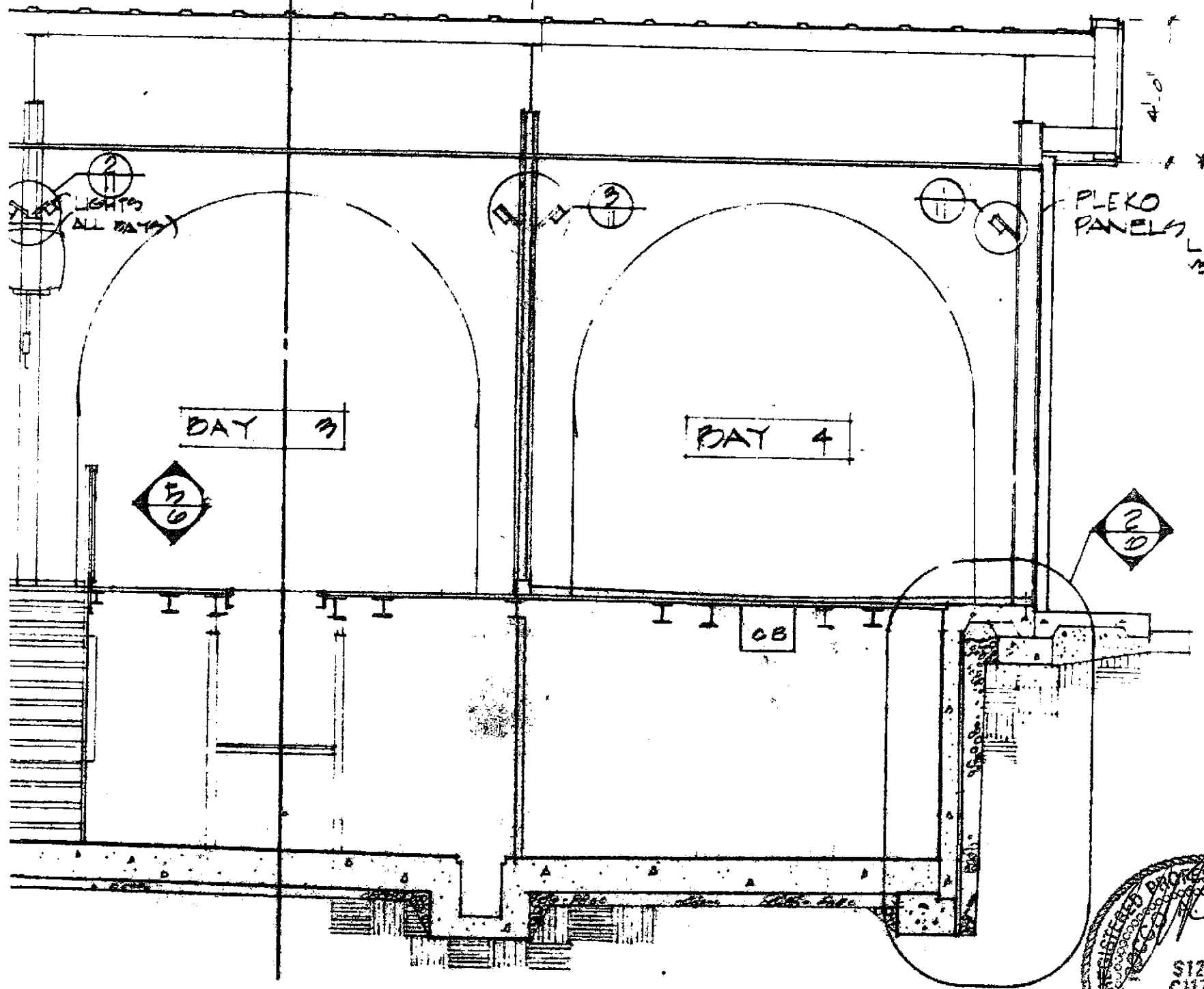


8 GA SUP VTL DRIP PAN. SLIDE 1/8\"/>

WALK SUP. SECTION
1/2" = 1'

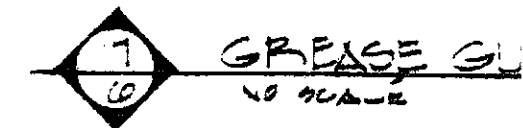
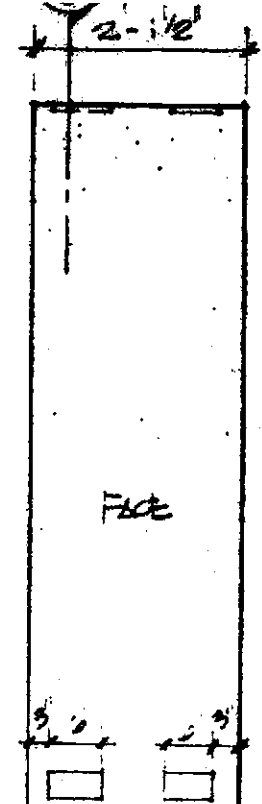
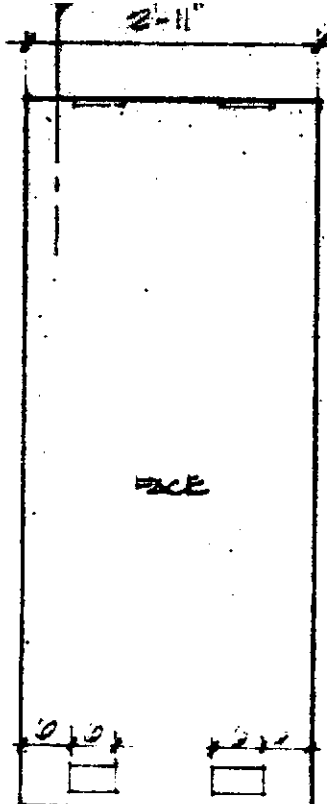
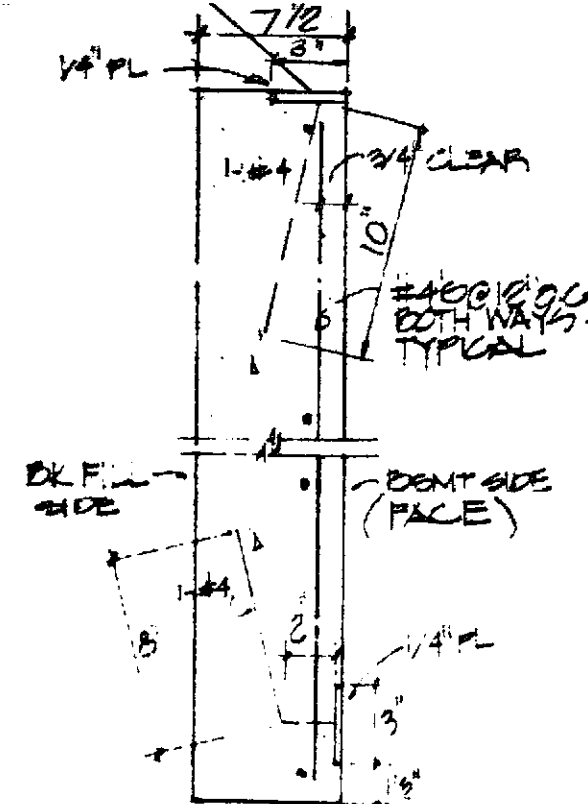
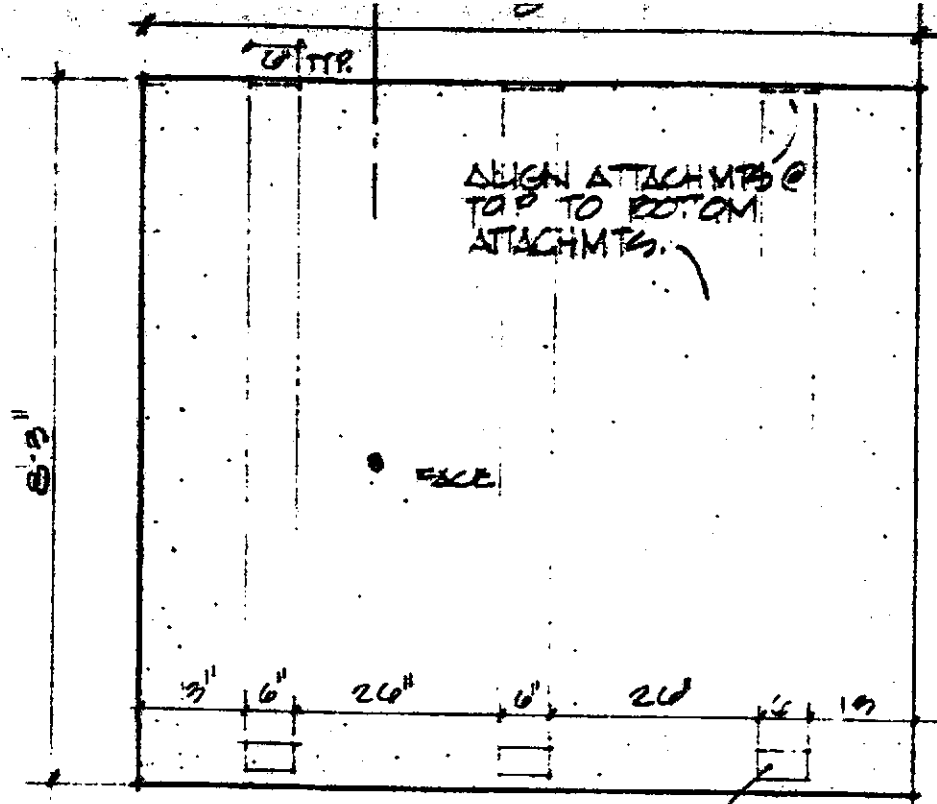
WALK SUPPORT SECTION BSMT.
1/2" = 1'

ALIGN A1 ON A FOR 2 BAY SECTION
1/4 STAIRS BETWEEN



SHT 4 IS FOR 2 BAY FACILITY

5 LUBE MANAGEMENT



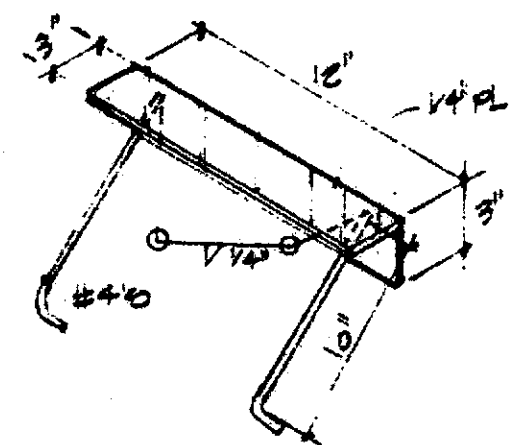
17/6 PANEL 1
1/2" = 1'

14/6 SECTION
1/2" = 1'

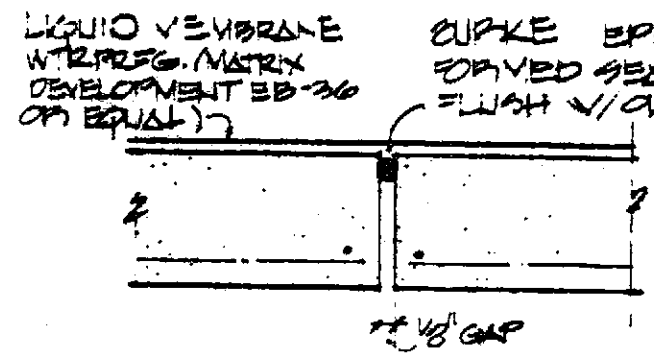
19/6 PANEL 2
1/2" = 1'

16/6 PANEL 3
1/2" = 1'

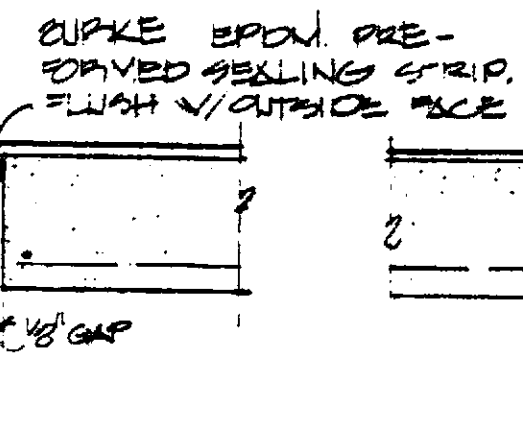
13/6



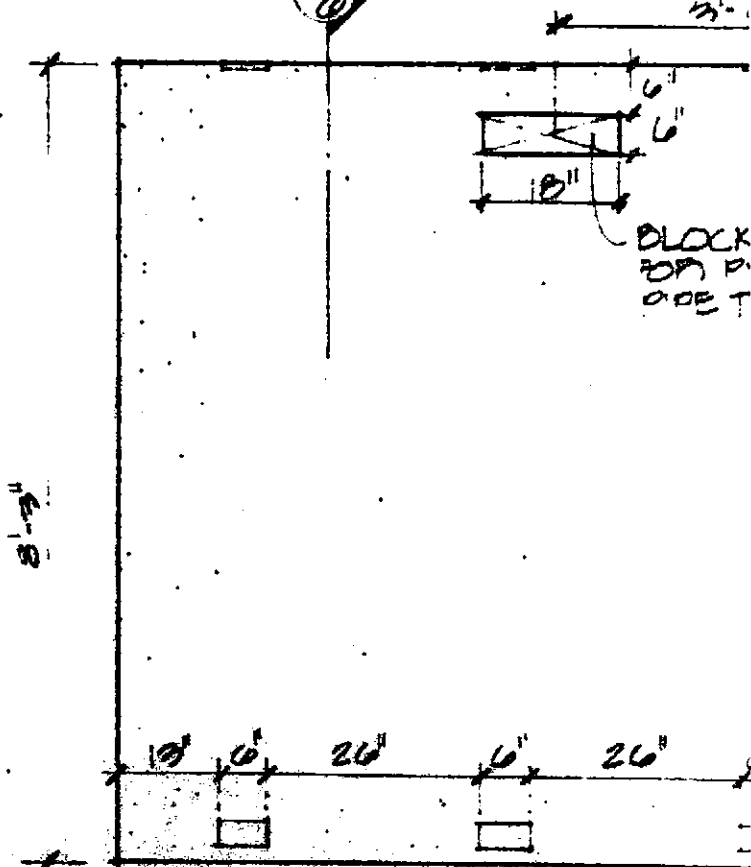
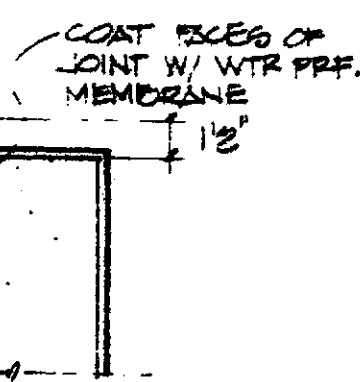
10/6 WELD PLATE IN FLOOR



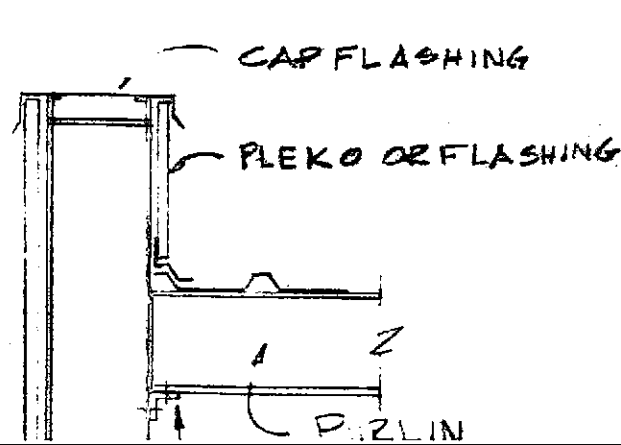
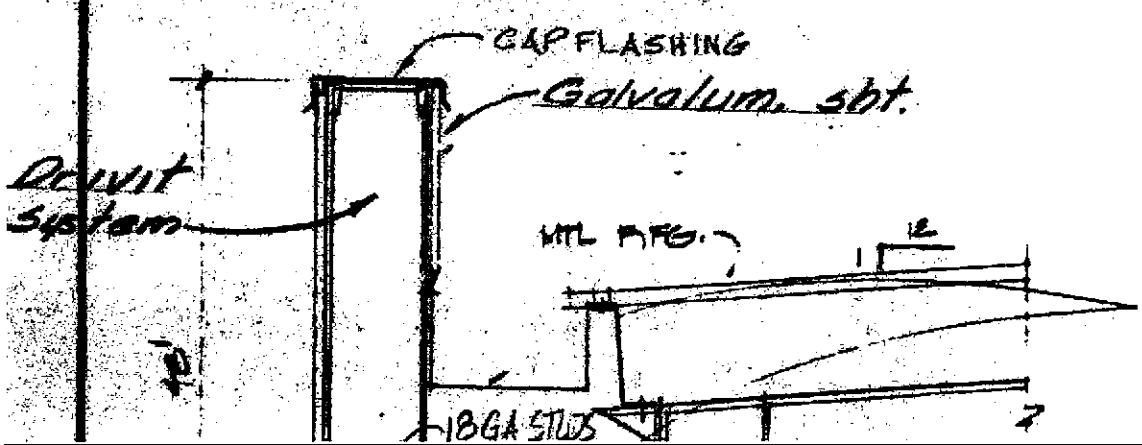
11/6 CONC. ON JOINT
1/2" = 1'



12/6 CORNER DET.
1/2" = 1'

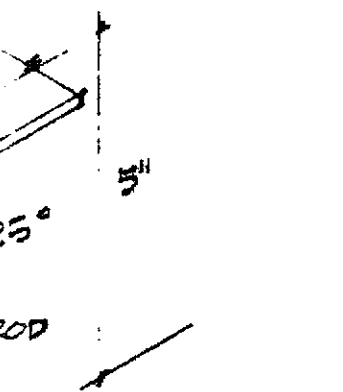


22/6 PANEL 4
1/2" = 1'-0"



ST. COPPER MATERIAL GUTTER BY V.P.

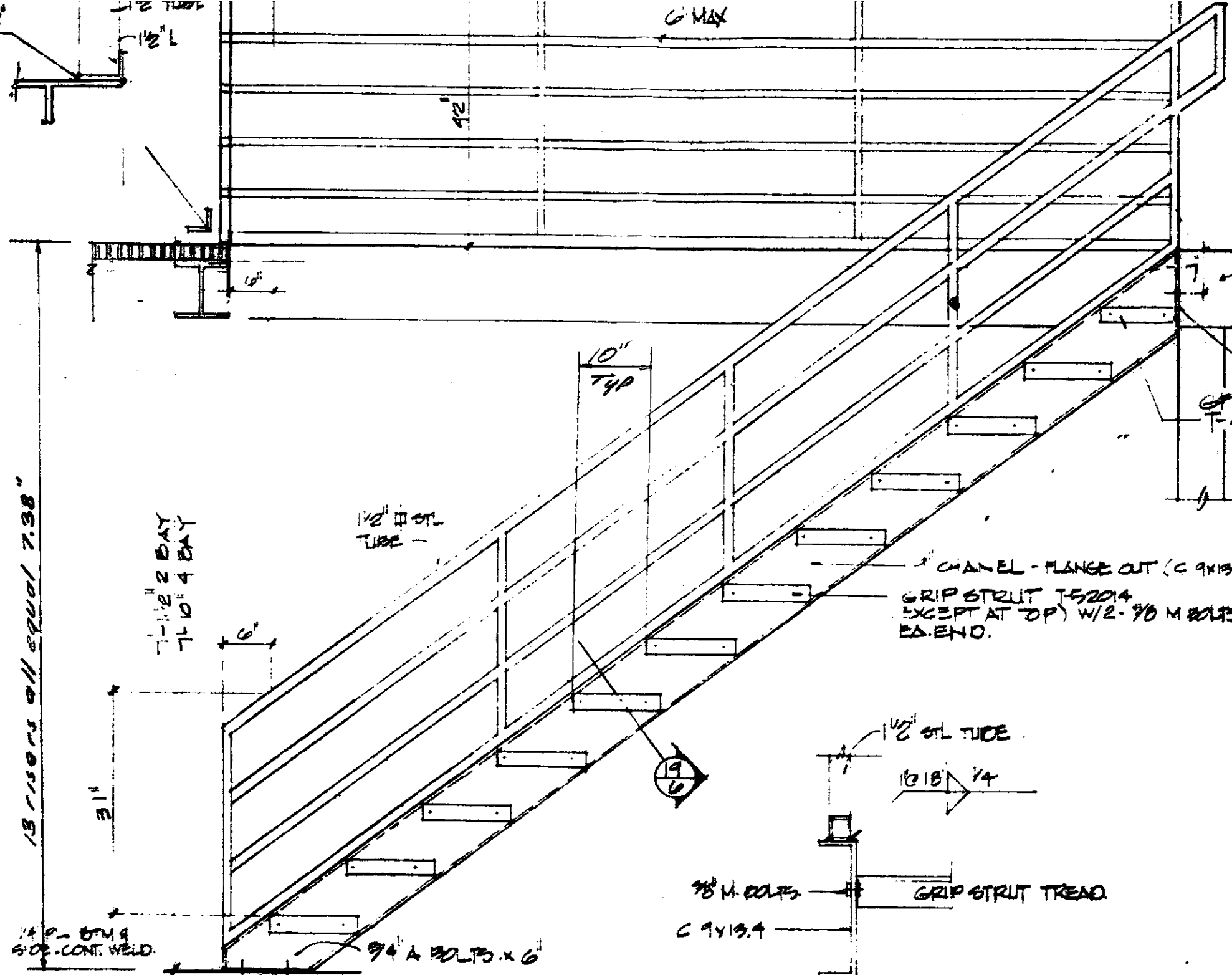
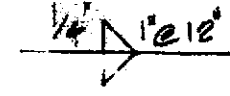
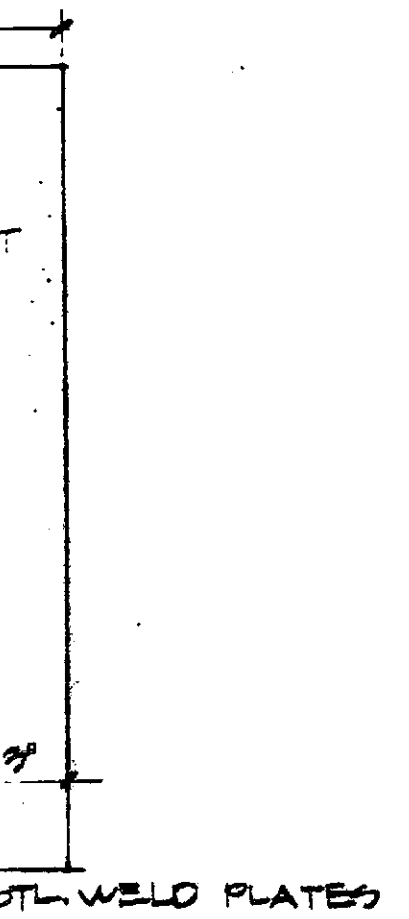
WHEN REQD
WELD 1/4" SURF.



USE 20 1/2 O.D.
TOTAL 3 REQ'D.

END

COOKS



RISERS ALL EQUAL 7.98"

1/2" 2 DAY
7/10" 4 DAY

1/2" STL
TUBE

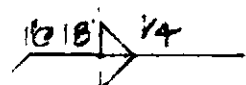
10"
TYP

3/4" A BOLTS x 6"

1/4" PL END CAP
(CONTINUOUS STAIN
SUPP.)
GRIP STRUT
T-42014

CHANNEL - FLANGE OUT (C 9x13.4)
GRIP STRUT T-52014
EXCEPT AT TOP W/ 2- 7/8" M BOLTS
EA. END.

1/2" STL TUBE



7/8" M BOLTS

GRIP STRUT TREAD

C 9x13.4

1/4" PL END CAP
SIDE - CONT. WELD

3/4" A BOLTS x 6"



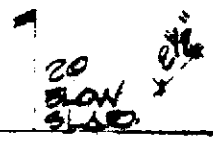
STAIR SECTION (2 DAY)

3/4" = 1'-0"

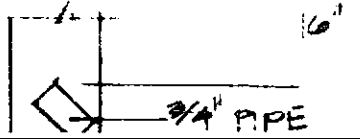


DETAIL

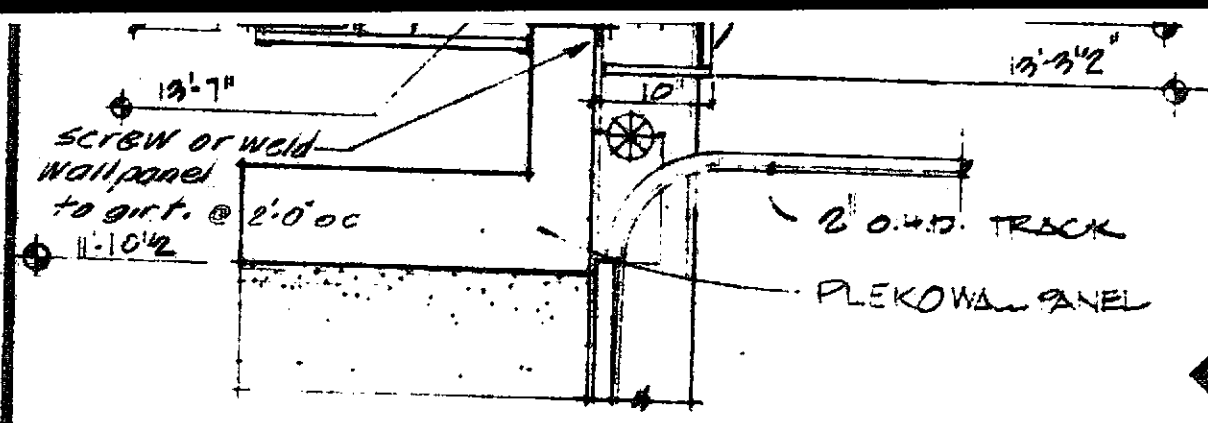
1/2" = 1'



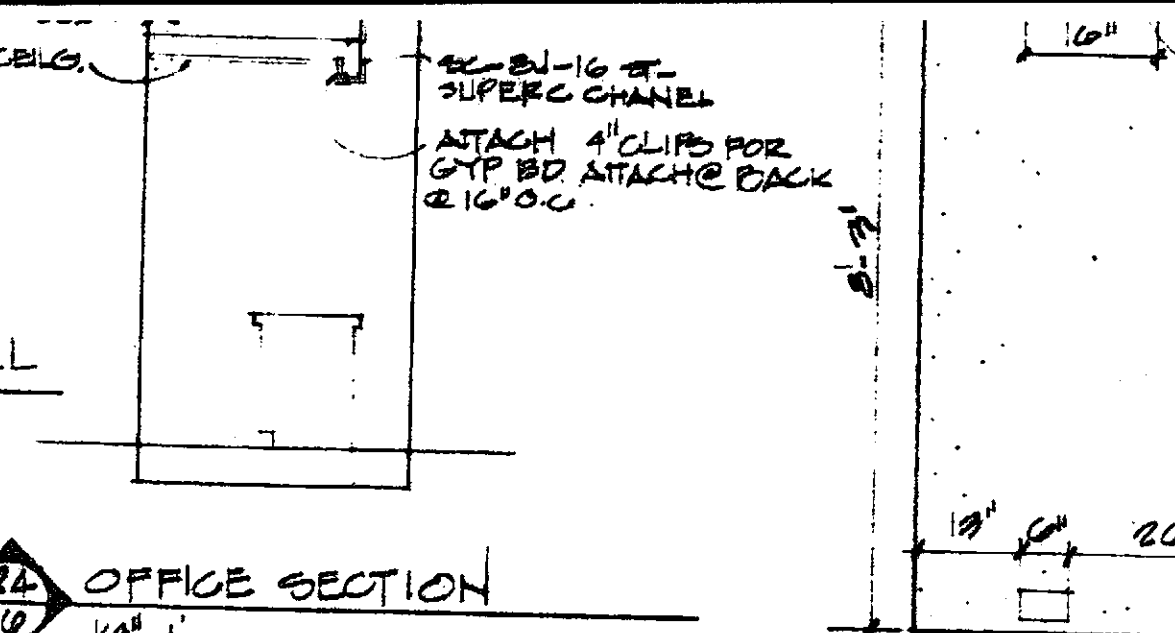
PIPE
20 5



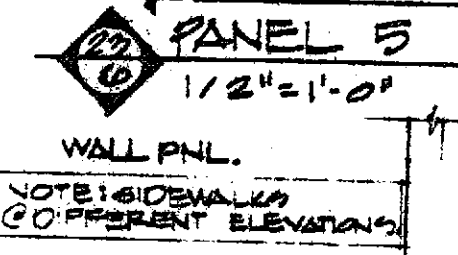
3/4" PIPE



25
0
FACIA DTL. @ ENDWALL
1/4"=1'

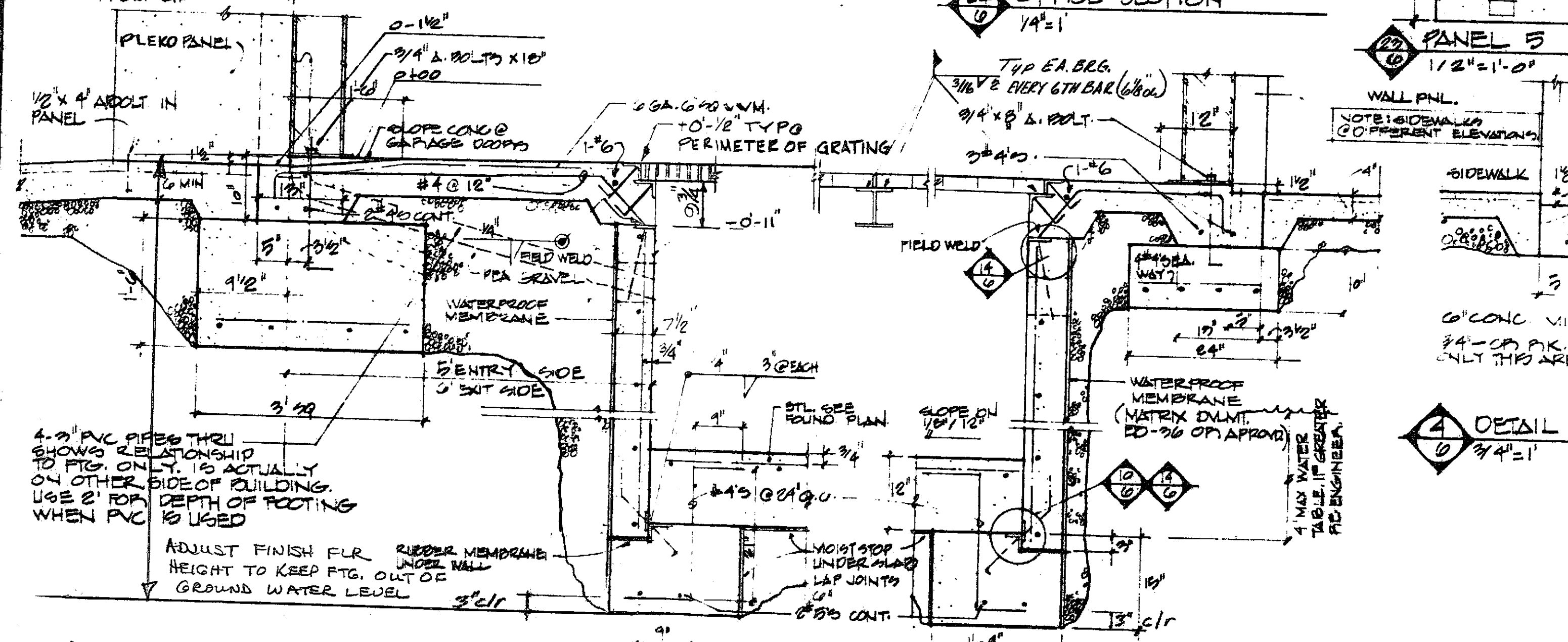


24
0
OFFICE SECTION
1/4"=1'



23
0
PANEL 5
1/2"=1'-0"

3
0
FACIA DTL. @ DOOR 3/4"=1'
10' CONC. APPROX FROM LIP



4-3\"/>

ADJUST FINISH FLR RIBBER MEMBRANE UNDER WALL HEIGHT TO KEEP FTG. OUT OF GROUND WATER LEVEL

4' MAX WATER TABLE, IF GREATER, SEE ENGINEER.

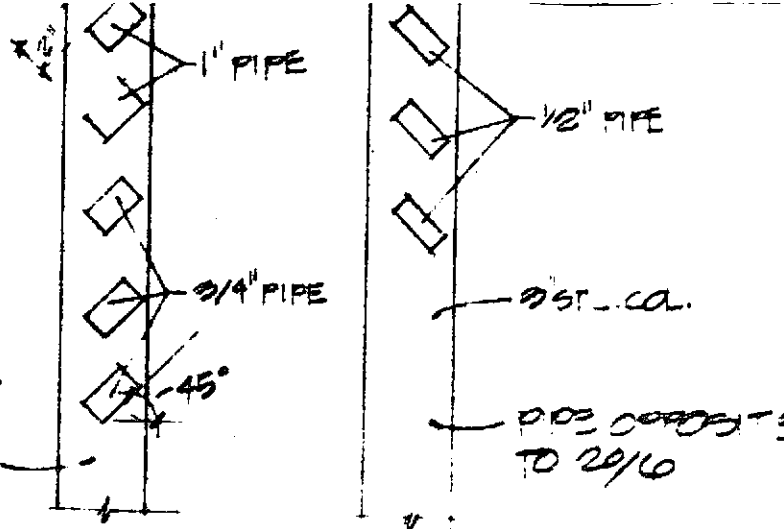
1
0
SECTION DETAIL @ ENTRANCE SIDE
3/4"=1'

2
0
SECTION DTL RIGHT SIDE
3/4"=1'

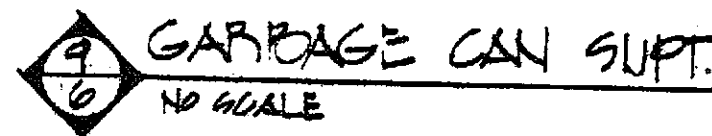
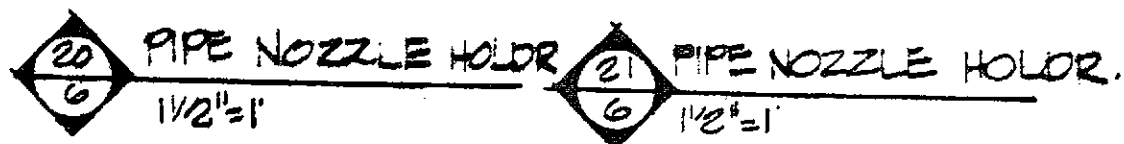
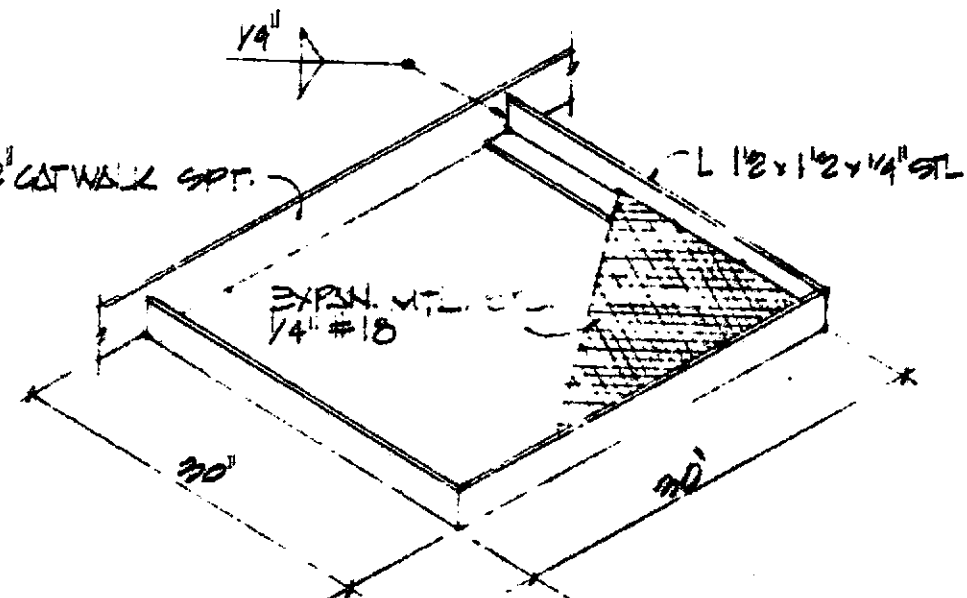
2 OUT
TUB PLUMBING

WELD PIPE
TO POST

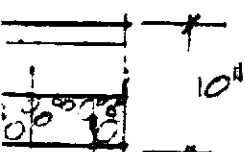
POST DOWN.
TOL & FILTER RACK
ON TOOL RK. SIDE



L 2x2 CATWALK SPT.



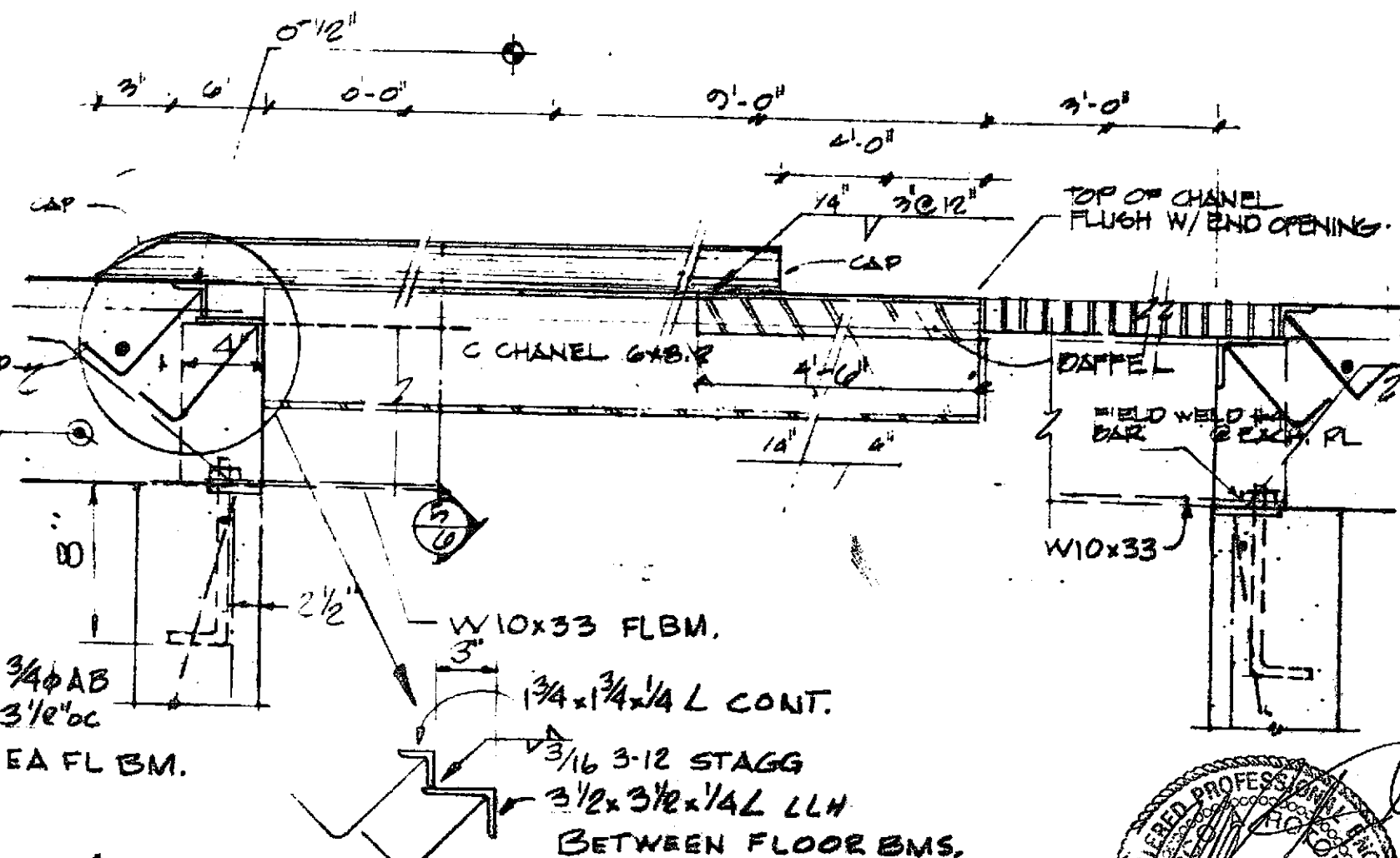
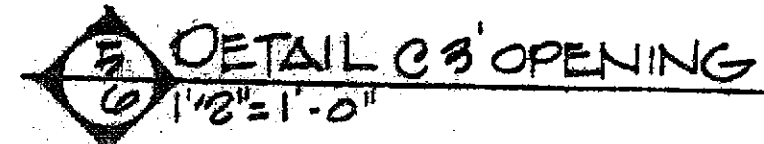
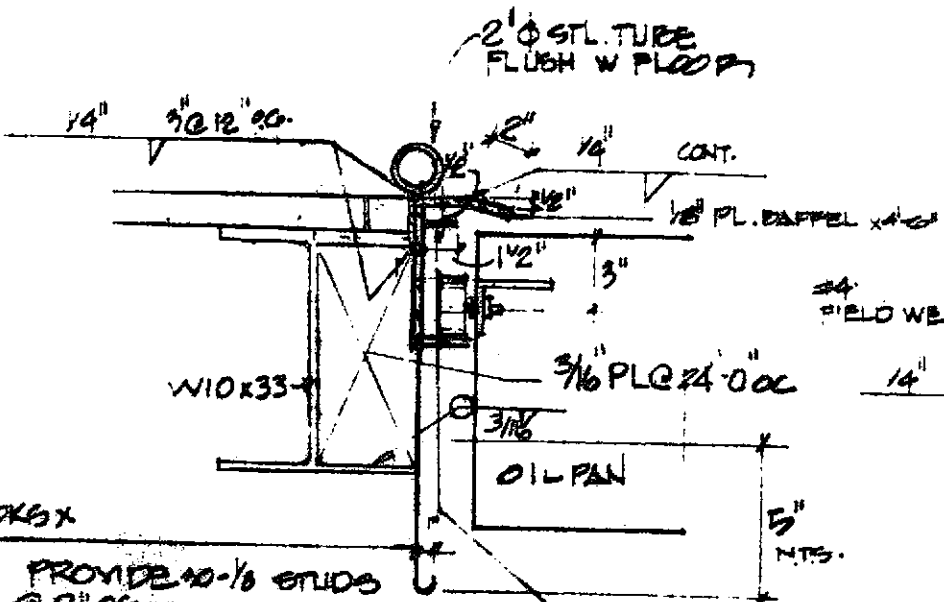
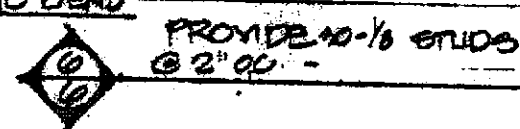
WALL
L W/ 177 #
P ACTUATED
ENER @ 24\"/>



PLAN)

SIDE

PROVIDE 3x 3/16 HOOKS x
9\"/>



LUBE MANAGEMENT

AMADOR VALLEY BLVD

VILLAGE PARKWAY

B-4

B-5

MW-6

MW-1

MW-5

CONCRETE APPROACH

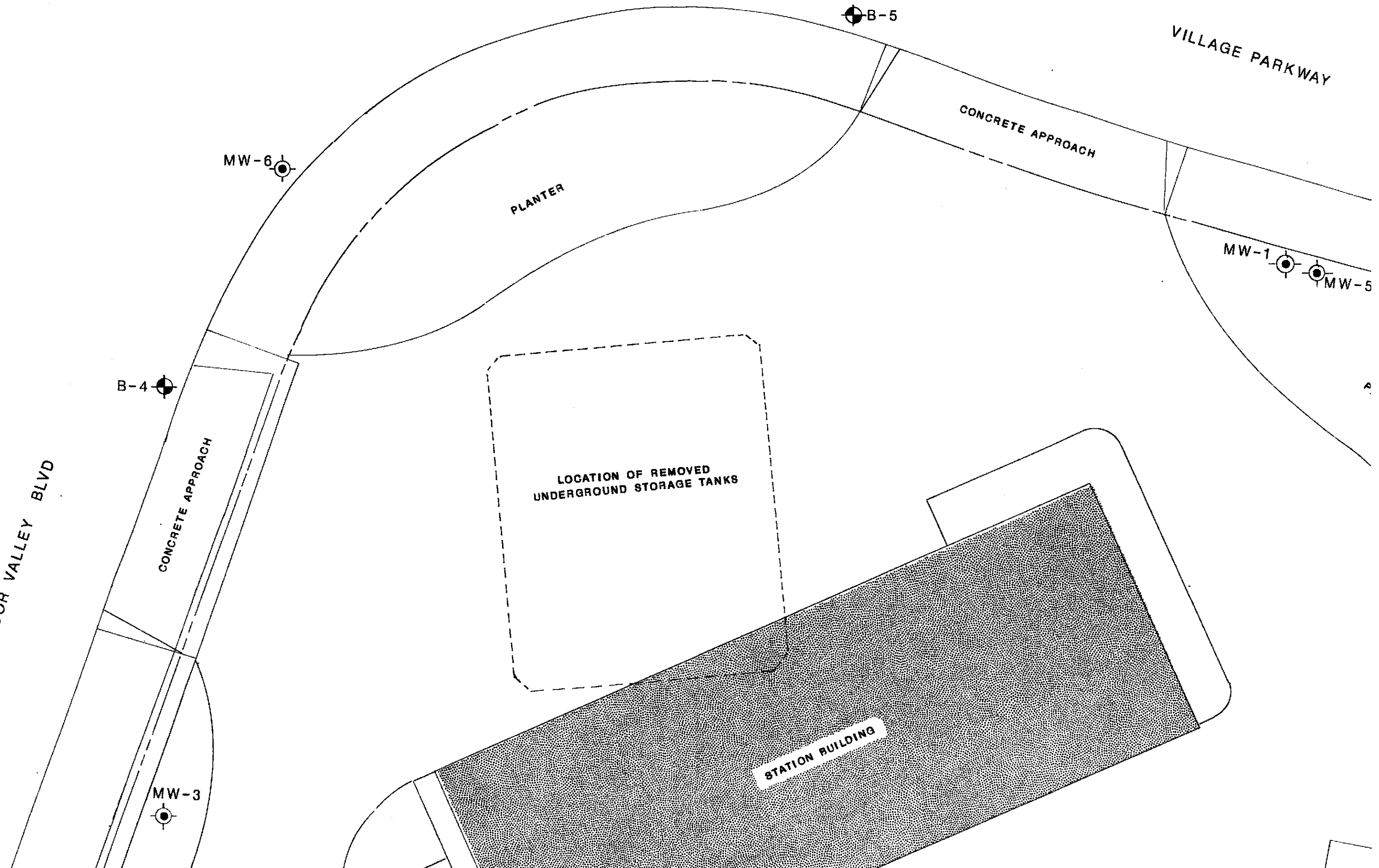
CONCRETE APPROACH

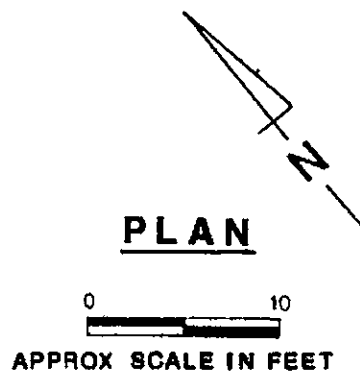
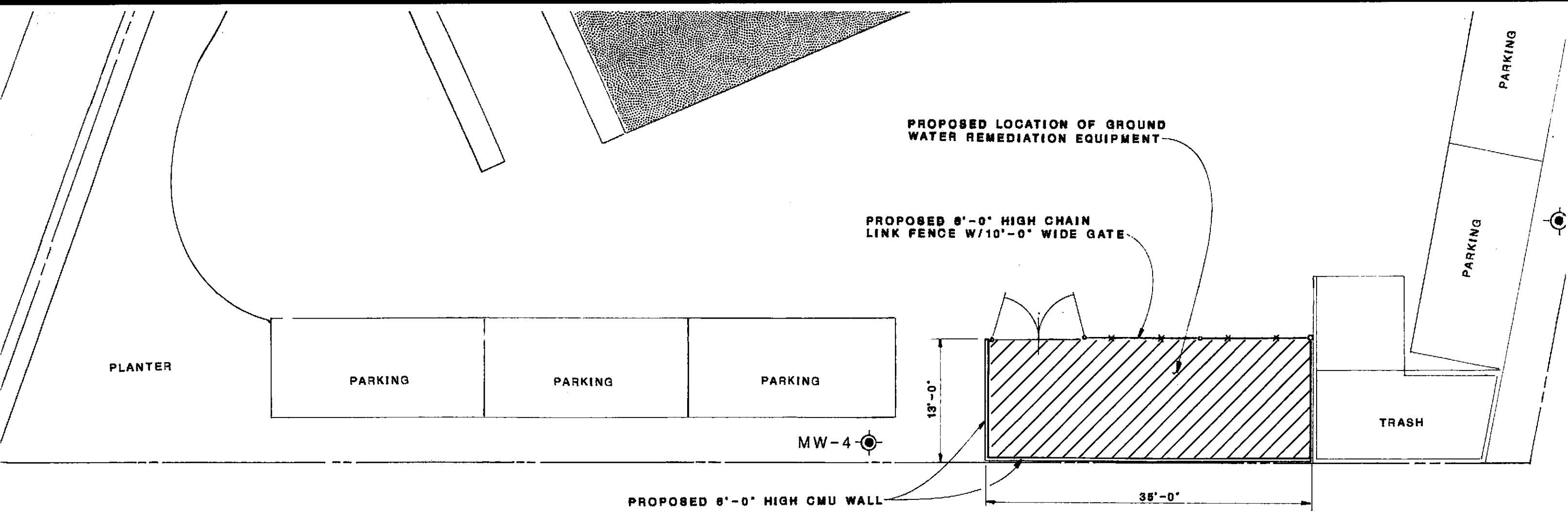
PLANTER

LOCATION OF REMOVED
UNDERGROUND STORAGE TANKS

MW-3

STATION BUILDING









SURVEY DRAWING BY SAMUEL KUSHNER, LAND SURVEYOR OF AMADOR COUNTY
 LOCATED AT VILLAGE PARKWAY IN DUBLIN (A.P. No. 841-210-1-7)
 PREPARED FOR LUBE MANAGEMENT CORPORATION OF MILPITAS.

NOTE:

1. RW-1 is existing as shown. Additional ground water recovery wells may be necessary to capture contamination plume. The location and quantity of such wells is to be determined later.

LEGEND:

- MW-1  GROUND WATER MONITORING WELL
- RW-1  GROUND WATER RECOVERY WELL
- B-1  SOIL BORING
- PROPERTY BOUNDARY

REV	DESCRIPTION	DATE	BY	APPD	 <p>ensco environmental services, Inc.</p>	<p>SITE PLAN</p> <p>FORMER SHELL STATION</p> <p>7194 VILLAGE PARKWAY</p> <p>DUBLIN, CALIFORNIA</p>		REVIEWED BY:	APPROVED BY:	
									<i>R. A. Tator</i>	<i>R. A. Tator P.E.</i>
									DESIGNED BY:	DATE:
									<i>R. A. Tator P.E.</i>	21 Nov 88
									JOB #:	DRAWN BY:
									3427E	<i>J.L.S.</i>
								DATE:	DRAWING #:	
								11/30/88	D-3427E-7	