

ALAMEDA COUNTY DEPARTMENT ENVIRONMENTAL HEALTH

Certified Unified Program Agency (CUPA)
1131 Harbor Bay Parkway, Alameda, CA 94502-6577
Phone (510) 567-6700; Fax (510) 337-9335

INSPECTION NOTES

POWELL SHELL
1800 POWELL STREET
EMERYVILLE, CA 94608

SR0023741

DIESEL PIPING RELEASE OCCURRING ON 10-1-2013

ON OCTOBER 1, 2013 ACDEH WAS NOTIFIED BY AU ENERGY, MR. JOHN ELLIS, REGARDING A RELEASE OF APPROXIMATELY 5 GALLONS OF DIESEL FUEL. ACCORDING TO THE EMAIL, SERVICE STATION SYSTEMS (FACILITY CONTRACTOR) WAS ONSITE TO INVESTIGATE A DIESEL DISPENSING PROBLEM THAT OCCURRED ON 9-30-2013. CONTRACTOR DETERMINED THAT THE DIESEL LINE HAD BEEN DAMAGED CAUSING A RELEASE OF DIESEL FUEL.

ON OCTOBER 2, 2013 ACDEH WAS NOTIFIED BY CALIFORNIA OFFICE OF EMERGENCY SERVICES (CAL OES) AND AU ENERGY REGARDING A RELEASE OF APPROXIMATELY 500 GALLONS OF DIESEL FUEL. ACCORDING TO THE NOTIFICATION THE RELEASE WAS CAUSED BY DRILLING ACTIVITIES THAT DAMAGED THE PRESSURIZED DIESEL PRODUCT LINE AT THE FACILITY.

ON OCTOBER 3, 2013 PHONE CALLS AND SUBSEQUENT EMAILS TO/FROM MR. ELLIS AND WALTON ENGINEERING, VERONICA FREITAS (PIPING REPAIR CONTRACTOR) CONFIRMING: RELEASE QUANTITIES OF APPROXIMATELY 540 GALLONS, REPAIR ACTIVITIES THAT INVOLVED EXCAVATION AND PRODUCT PIPING REPLACEMENT, ACDEH PERMITTING, REGULATORY REQUIREMENTS TO PROPERLY TEST PIPING PRIOR TO DISPENSING FUEL, AND SOIL CONFIRMATION SAMPLING.

ONSITE OCTOBER 4, 2013 TO CONFIRM PIPING REPAIRS, SOIL SAMPLING, AND WITNESS REQUIRED TESTING TO PLACE DIESEL SYSTEM BACK INTO SERVICE. WHILE ONSITE ADVISED MR. ELLIS TO PREPARE AND SUBMIT RELEASE REPORTING DOCUMENTS TO ACDEH. MR. ELLIS STATED THAT AU ENERGY CONTRACTED WITH BUREAU VERITAS TO PERFORM SOIL BORINGS FOR SITE CHARACTERIZATION PRIOR TO A FACILITY RAZE AND REBUILD. 4 SOIL BORINGS WERE CONDUCTED BY BUREAU VERITAS ON 9-30-2013 FROM APPROXIMATELY 8AM TO 12PM. AT APPROXIMATELY 12:15 PM ON 9-30-2013 A FACILITY CUSTOMER ATTEMPTED TO PUMP DIESEL FUEL. ABOUT THE SAME TIME THE VEEDER-ROOT MONITORING SYSTEM ELECTRONIC LINE LEAK DETECTOR ACTIVATED A "Q3" ALARM NOTIFYING THE FACILITY. FACILITY CONTACTED SERVICE STATION SYSTEMS (SSS) TO INVESTIGATE THE "Q3" ALARM. BETWEEN 9-30-2013 AND 10-1-2013 SSS INVESTIGATED THE ALARM. ON 10-1-2013 AT APPROXIMATELY 2:30 PM SSS NOTIFIED MR. ELLIS THAT THE DIESEL PIPING IS FAILING TO HOLD PRESSURE AND THERE MAY BE DAMAGE TO THE DIESEL PRODUCT PIPING INDICATING A POTENTIAL RELEASE. AT THIS POINT DIESEL LINE IS SHUTDOWN PREVENTING ADDITIONAL ATTEMPTS TO PUMP. MR. ELLIS CONTACTED WALTON ENGINEERING TO INVESTIGATE THE POSSIBLE DIESEL PIPING FAILURE. WALTON ENGINEERING BEGAN EXCAVATING NEAR THE SOIL BORINGS CONDUCTED PREVIOUSLY BY BUREAU VERITAS. AT THE SECOND EXCAVATION NEAR DISPENSER 7 WALTON ENGINEERING DISCOVERED DAMAGE TO THE DIESEL PRODUCT PIPING AND A STRONG DIESEL SMELL. THE DAMAGED PORTION OF THE DIESEL PIPING WAS REMOVED AND REPLACED WITH "LIKE FOR LIKE" AMERON FRP PIPING. SOIL SAMPLES WERE TAKEN AT 2 LOCATIONS FOR ANALYSIS. ONE SAMPLE WAS TAKEN NEAR THE DAMAGED AREA OF PIPING AND THE SECOND WAS TAKEN APPROXIMATELY A FEW FEET AWAY ON THE SIDE WALL OF THE EXCAVATION. A STRONG DIESEL SMELL WAS PRESENT BEFORE, DURING, AND AFTER SAMPLING ACTIVITIES. A PRESSURE TEST AT 50 PSI WAS PERFORMED POST REPAIR. AFTER BACK FILL WAS PUT IN PLACE A LINE TEST WAS PERFORMED TO CONFIRM LINE TIGHTNESS. AS A SIDE NOTE IT APPEARED THAT THE FACILITY'S WATER LINE WAS IN CLOSE PROXIMITY TO THE DIESEL PRODUCT LINE AND IT MAY HAVE BEEN DAMAGED AT THE SAME TIME. THE FACILITY DECIDED TO REPAIR/REPLACE THE WATER LINE PRIOR TO BACKFILLING.

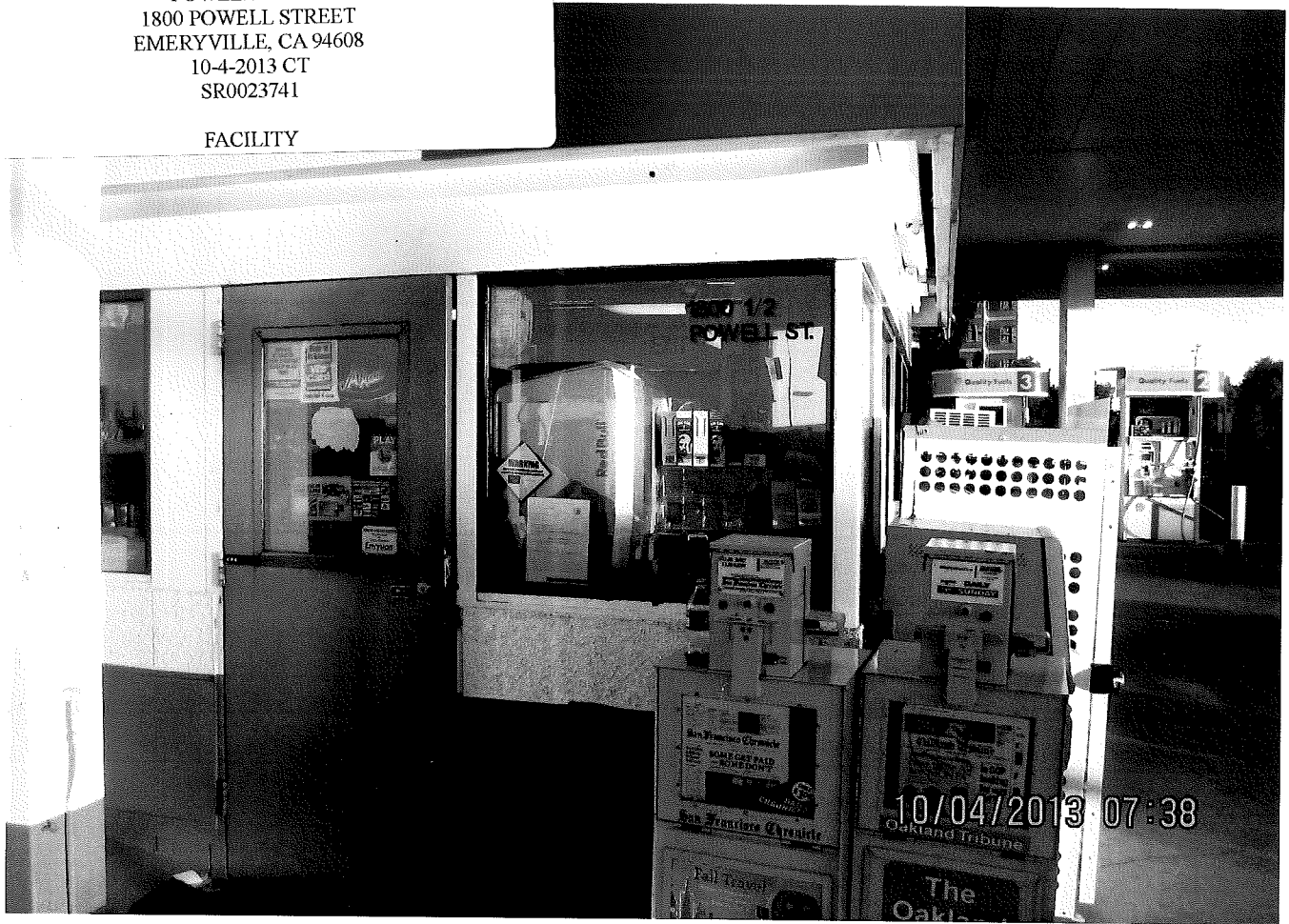
10-9-2013 AU ENERGY SUBMITTED REQUIRED RELEASE REPORTING DOCUMENTATION TO ACDEH



CHRIS TOUGERON
SR. HAZARDOUS MATERIALS SPECIALIST
ACDEH 10-9-2013

POWELL SHELL
1800 POWELL STREET
EMERYVILLE, CA 94608
10-4-2013 CT
SR0023741

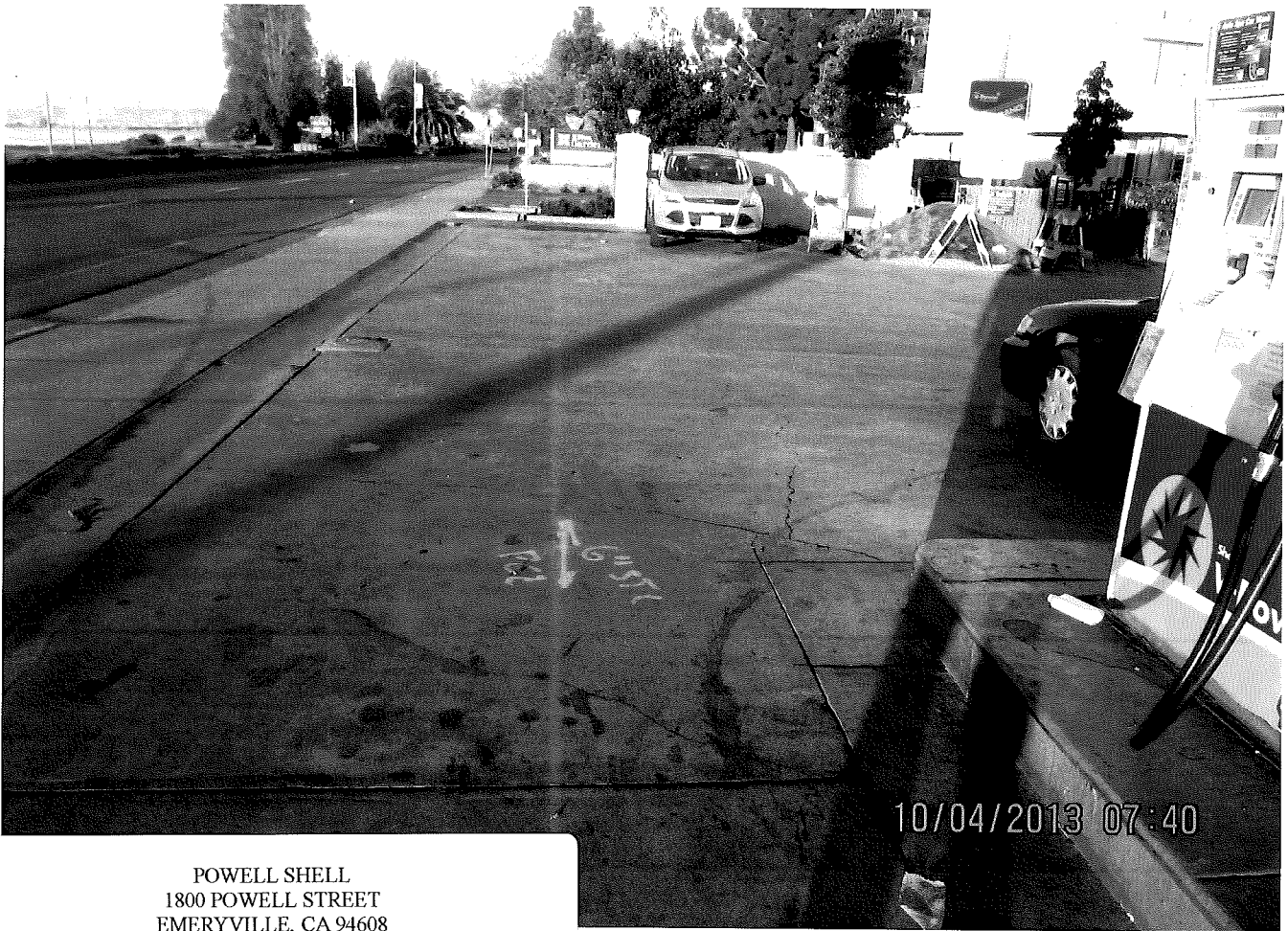
FACILITY



POWELL SHELL
1800 POWELL STREET
EMERYVILLE, CA 94608
10-4-2013 CT
SR0023741

STOCK PILE OF EXCAVATED BACKFILL





POWELL SHELL
1800 POWELL STREET
EMERYVILLE, CA 94608
10-4-2013 CT
SR0023741

USA MARKINGS FOR PG&E GAS LINE

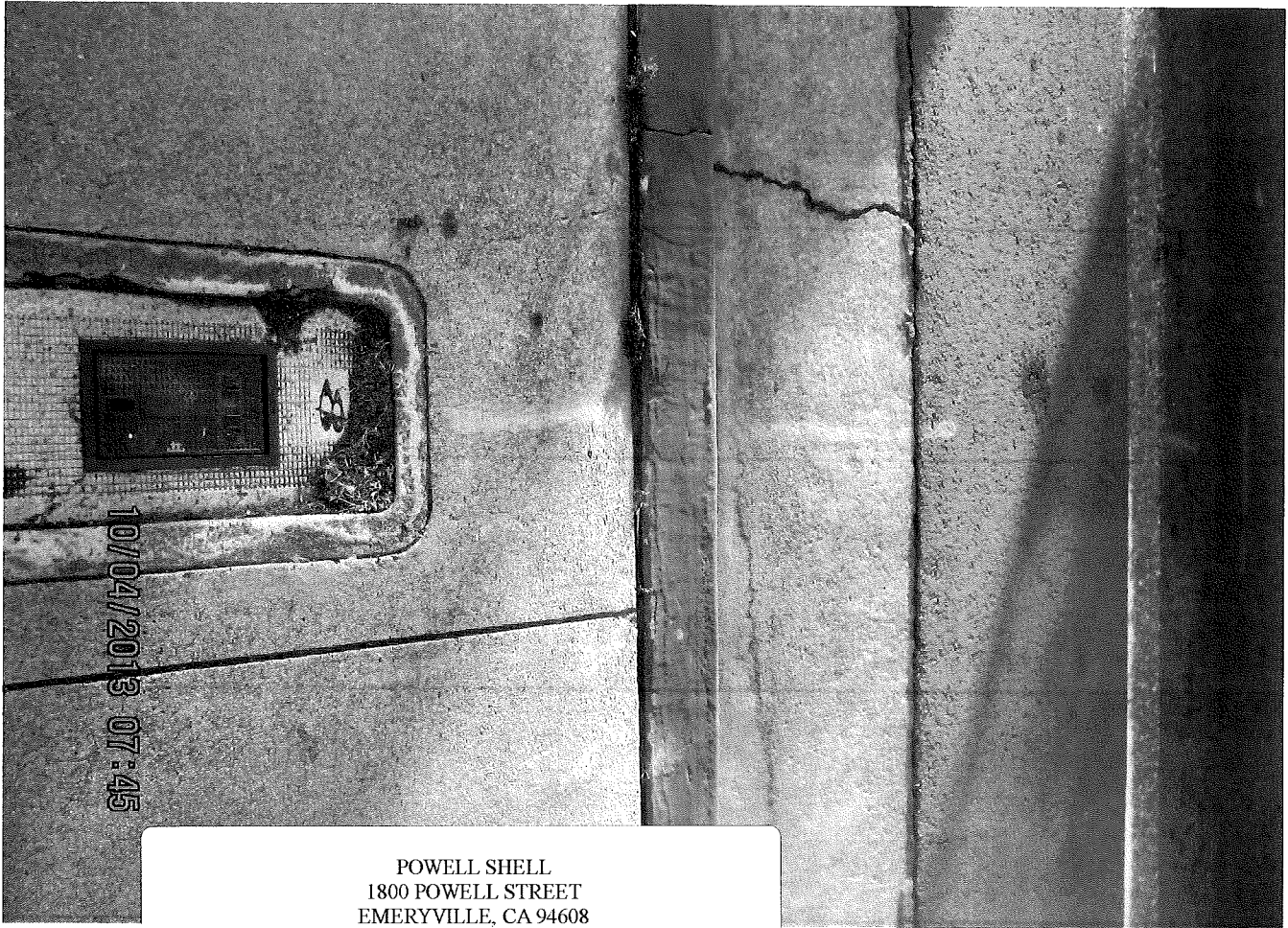




POWELL SHELL
1800 POWELL STREET
EMERYVILLE, CA 94608
10-4-2013 CT
SR0023741

USA MARKINGS FOR PG&E GAS LINE





POWELL SHELL
1800 POWELL STREET
EMERYVILLE, CA 94608
10-4-2013 CT
SR0023741

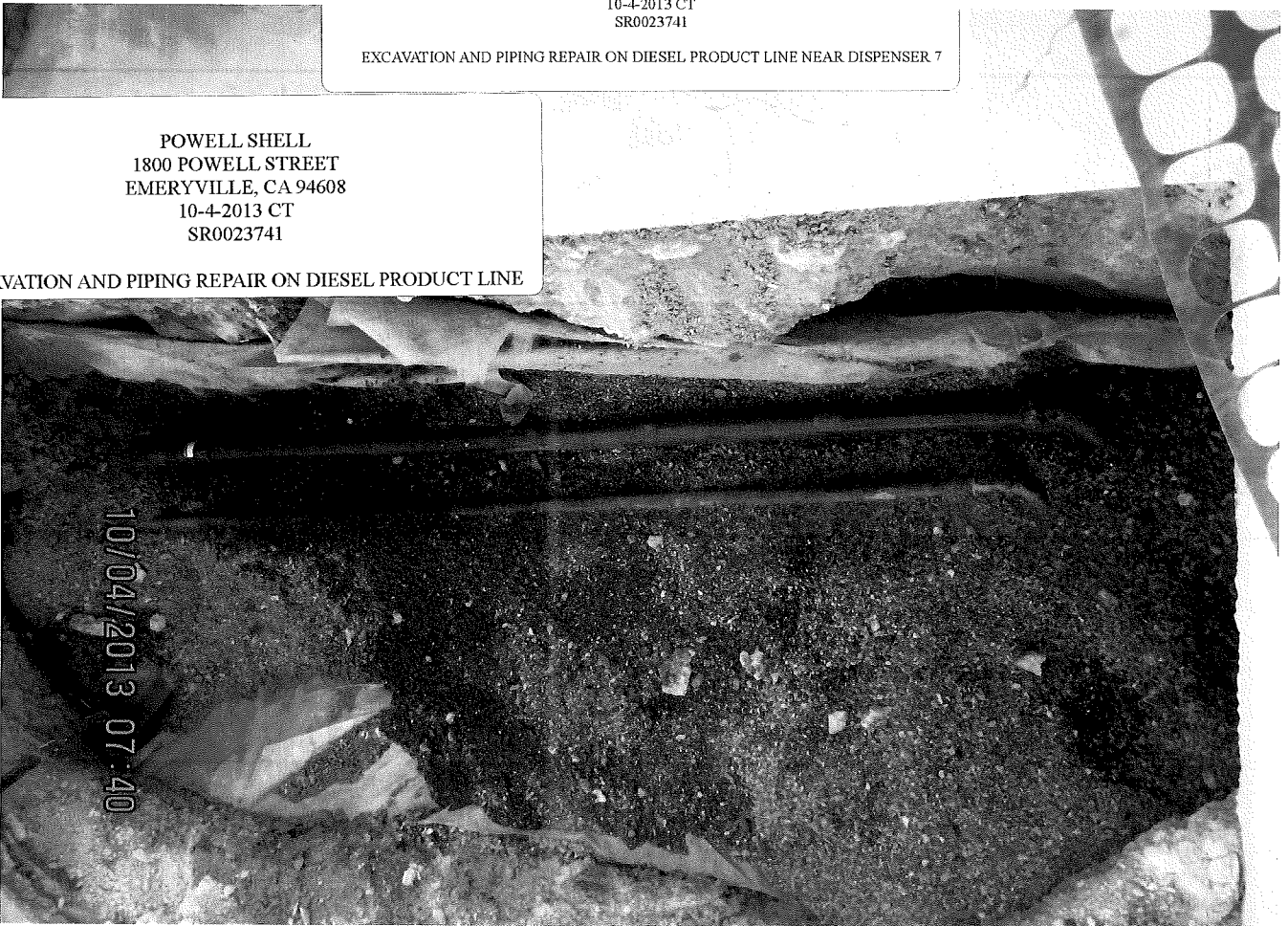


USA MARKINGS FOR EBMUD WATER LINE

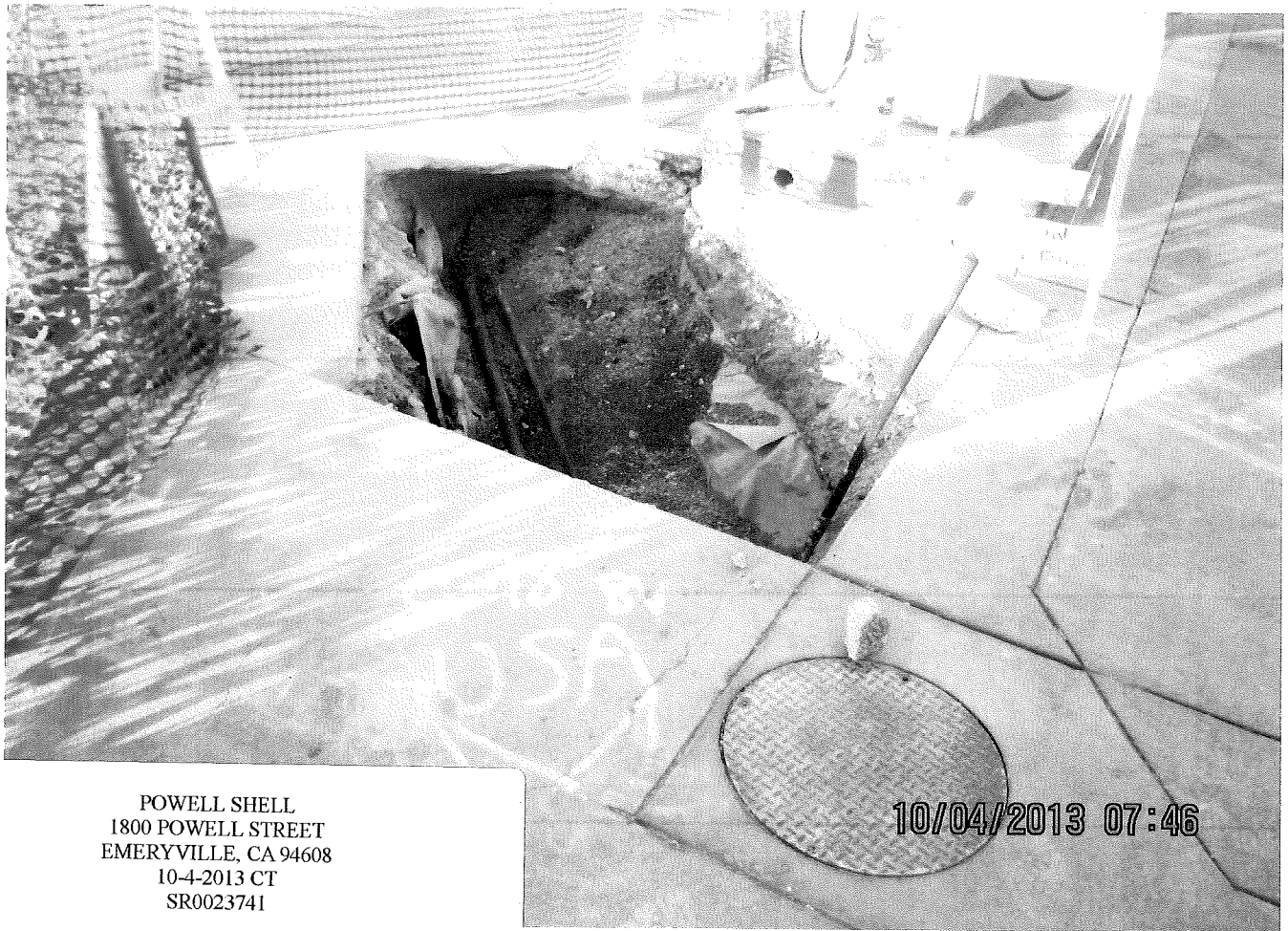
10/04/2013 07:46



POWELL SHELL
1800 POWELL STREET
EMERYVILLE, CA 94608
10-4-2013 CT
SR0023741
EXCAVATION AND PIPING REPAIR ON DIESEL PRODUCT LINE NEAR DISPENSER 7



POWELL SHELL
1800 POWELL STREET
EMERYVILLE, CA 94608
10-4-2013 CT
SR0023741
EXCAVATION AND PIPING REPAIR ON DIESEL PRODUCT LINE



POWELL SHELL
1800 POWELL STREET
EMERYVILLE, CA 94608
10-4-2013 CT
SR0023741

USA MARKINGS NEAR EXCAVATION



POWELL SHELL
1800 POWELL STREET
EMERYVILLE, CA 94608
10-4-2013 CT
SR0023741

EXCAVATION AND PIPING REPAIR ON DIESEL PRODUCT LINE

POWELL SHELL
1800 POWELL STREET
EMERYVILLE, CA 94608
10-4-2013 CT
SR0023741

EXCAVATION AND PIPING REPAIR ON DIESEL PRODUCT LINE



POWELL SHELL
1800 POWELL STREET
EMERYVILLE, CA 94608
10-4-2013 CT
SR0023741

EXCAVATION AND PIPING REPAIR ON DIESEL PRODUCT LINE
WATER PIPING POTENTIALLY DAMAGED BY DRILLING ACTIVITIES



POWELL SHELL
1800 POWELL STREET
EMERYVILLE, CA 94608
10-4-2013 CT
SR0023741

CONTRACTOR REPAIRING PIPING

WALTON
ENGINEERING, INC.

LIC # 617238

W. SACRAMENTO, CA

(916) 372-1888

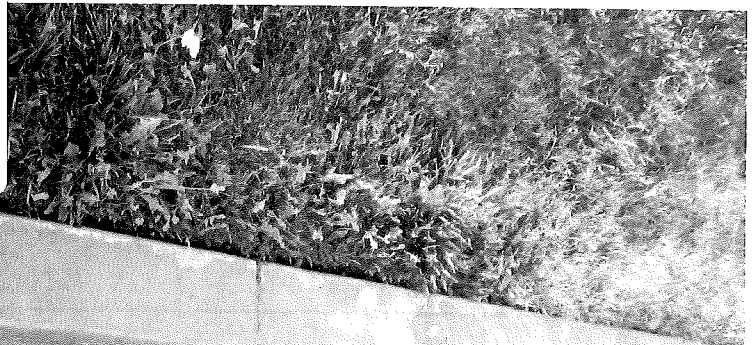


CA 105032

10/04/2013 07:48

POWELL SHELL
1800 POWELL STREET
EMERYVILLE, CA 94608
10-4-2013 CT
SR0023741

DAMAGED DIESEL PRODUCT PIPING REMOVED FROM EXCAVATION



10/04/2013 07:49

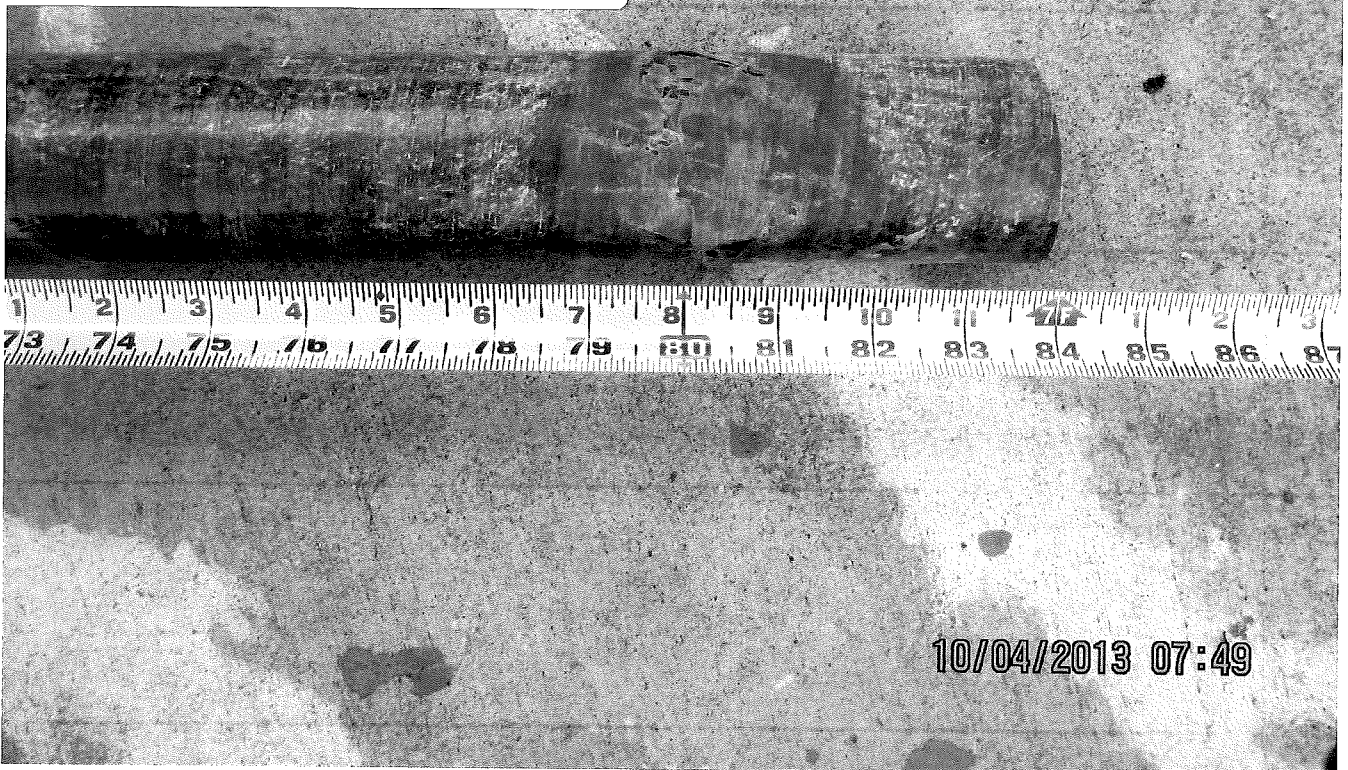
POWELL SHELL
1800 POWELL STREET
EMERYVILLE, CA 94608
10-4-2013 CT
SR0023741

DAMAGED DIESEL PRODUCT PIPING REMOVED FROM EXCAVATION



POWELL SHELL
1800 POWELL STREET
EMERYVILLE, CA 94608
10-4-2013 CT
SR0023741

DAMAGED DIESEL PRODUCT PIPING REMOVED FROM EXCAVATION





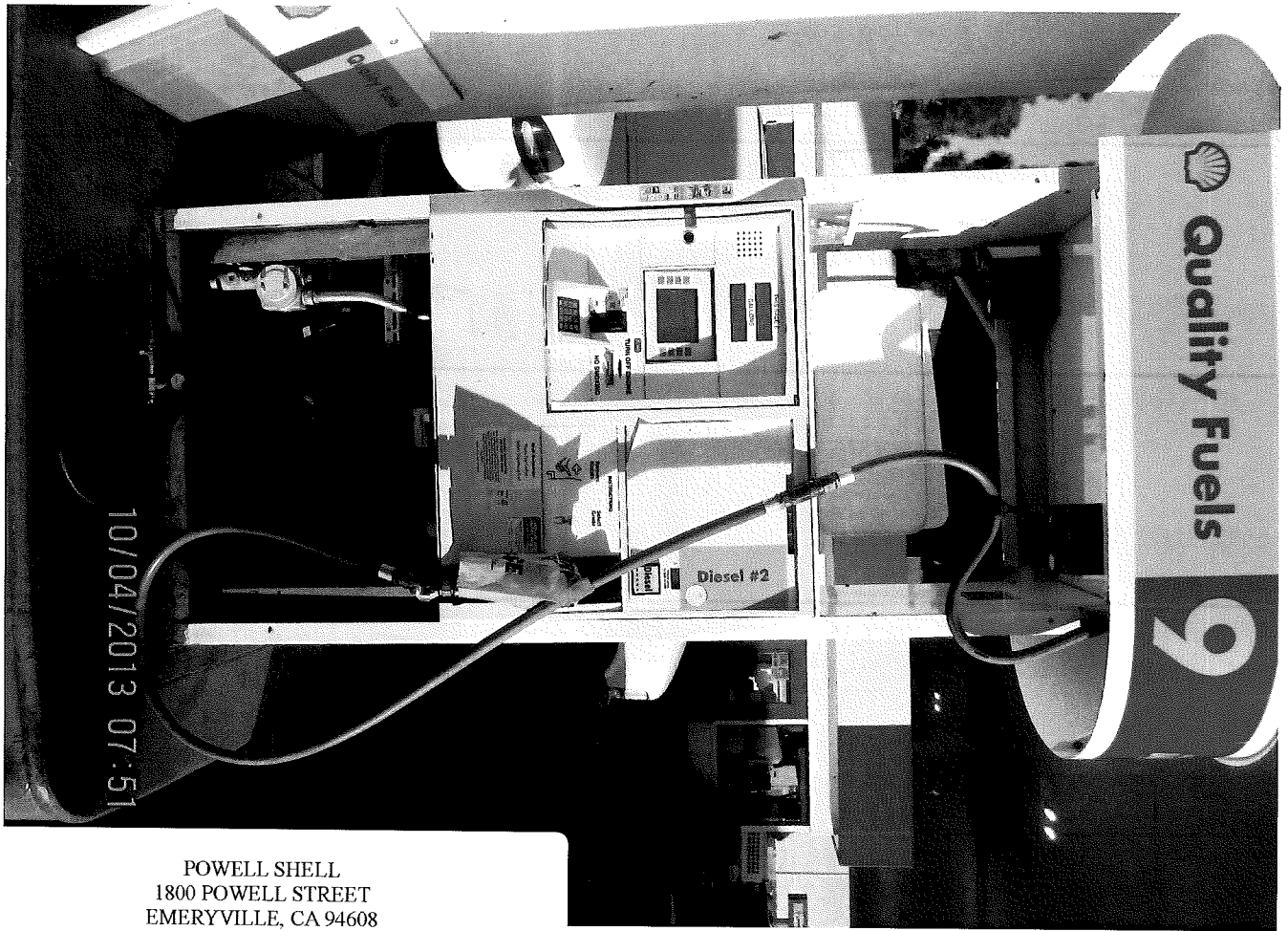
10/04/2013 07:49

POWELL SHELL
1800 POWELL STREET
EMERYVILLE, CA 94608
10-4-2013 CT
SR0023741

DAMAGED DIESEL PRODUCT PIPING REMOVED FROM EXCAVATION

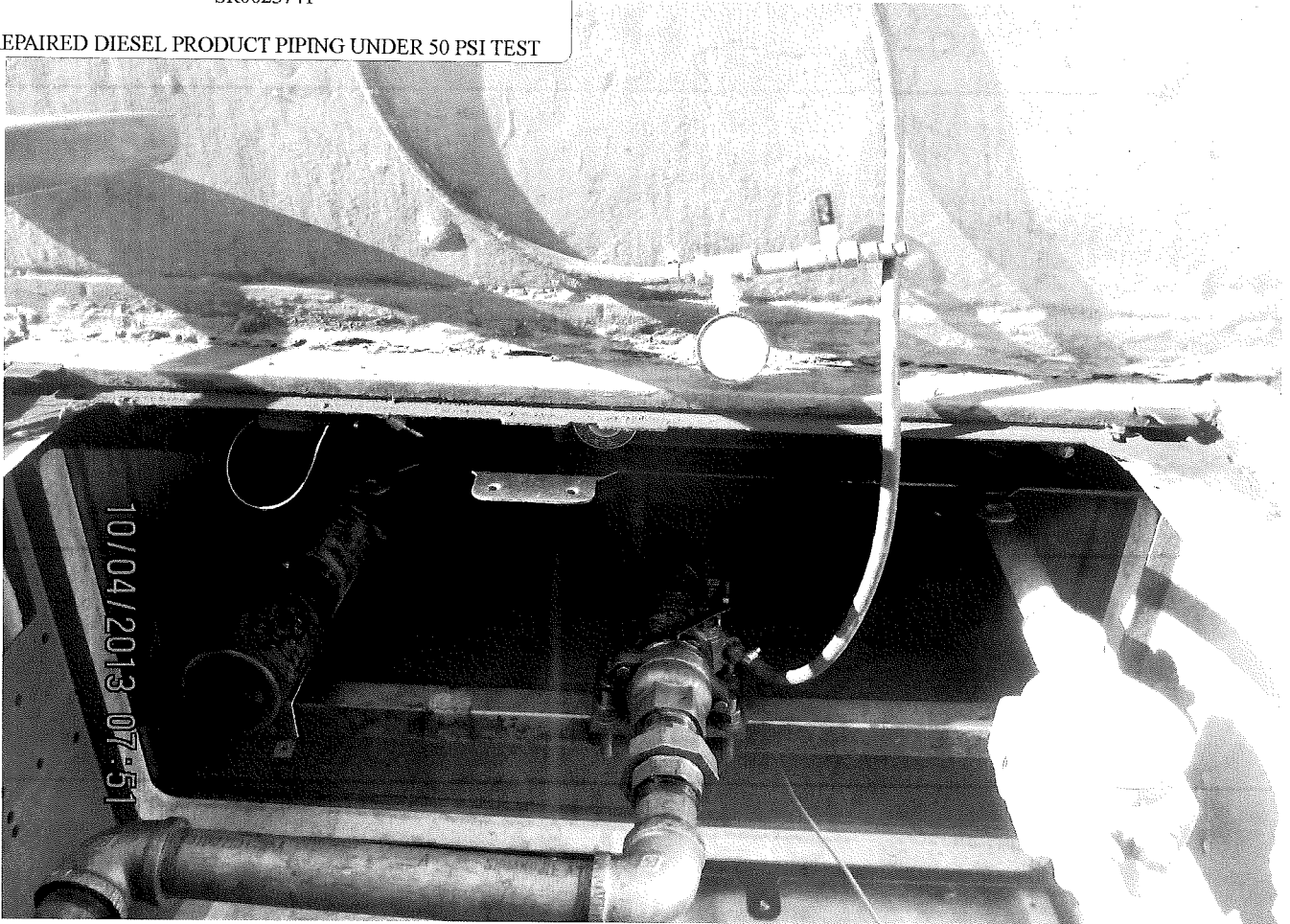


10/04/2013 07:50



POWELL SHELL
1800 POWELL STREET
EMERYVILLE, CA 94608
10-4-2013 CT
SR0023741

REPAIRED DIESEL PRODUCT PIPING UNDER 50 PSI TEST



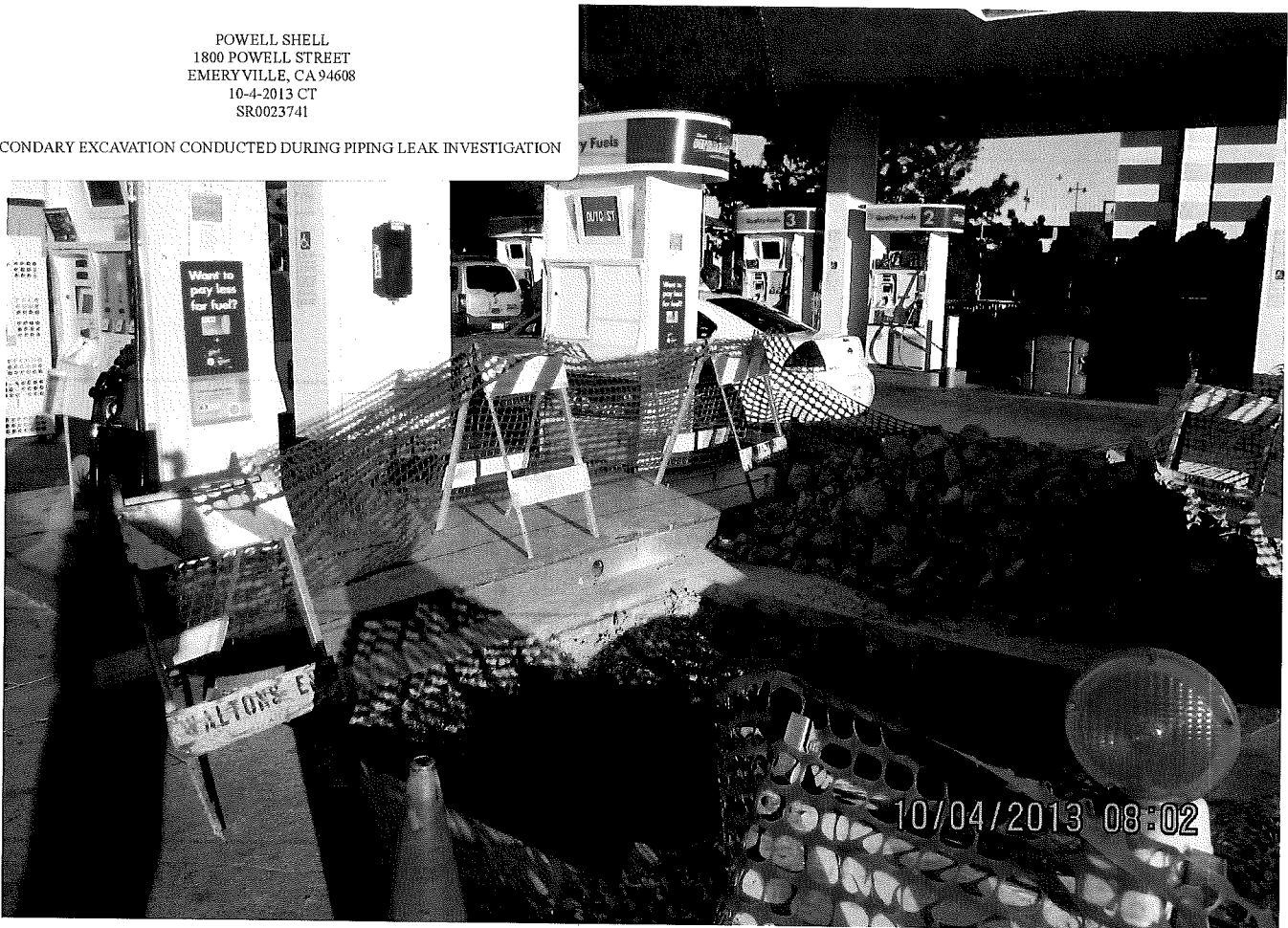
POWELL SHELL
1800 POWELL STREET
EMERYVILLE, CA 94608
10-4-2013 CT
SR0023741

REPAIRED DIESEL PRODUCT PIPING UNDER 50 PSI TEST



POWELL SHELL
1800 POWELL STREET
EMERYVILLE, CA 94608
10-4-2013 CT
SR0023741

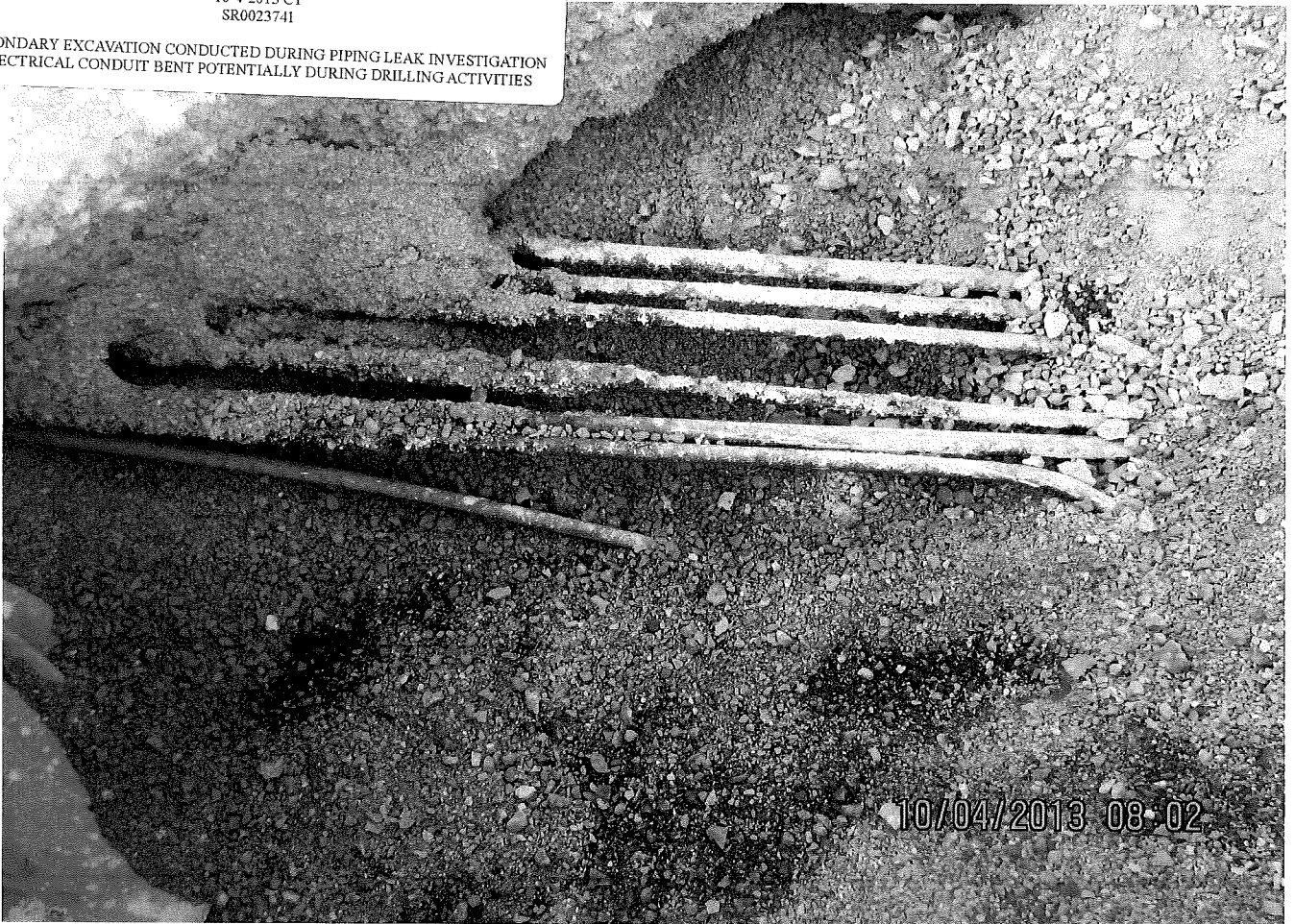
SECONDARY EXCAVATION CONDUCTED DURING PIPING LEAK INVESTIGATION





POWELL SHELL
1800 POWELL STREET
EMERYVILLE, CA 94608
10-4-2013 CT
SR0023741

SECONDARY EXCAVATION CONDUCTED DURING PIPING LEAK INVESTIGATION
ELECTRICAL CONDUIT BENT POTENTIALLY DURING DRILLING ACTIVITIES





POWELL SHELL
1800 POWELL STREET
EMERYVILLE, CA 94608
10-4-2013 CT
SR0023741

10/04/2013 08:04

TANK TOP / TANK PIT WITH 4 MONITORING WELLS USED TO PUMP OUT DIESEL/WATER MIX



POWELL SHELL
1800 POWELL STREET
EMERYVILLE, CA 94608
10-4-2013 CT
SR0023741

10/04/2013 08:04

TANK TOP MONITORING WELL USED TO PUMP OUT DIESEL/WATER MIX