

RECEIVED

1:48 pm, Jul 16, 2007

Alameda County
Environmental Health

SECOND QUARTER 2007 SITE MONITORING REPORT

**REDWOOD REGIONAL PARK
SERVICE YARD
OAKLAND, CALIFORNIA**

Prepared for:

**EAST BAY REGIONAL PARK DISTRICT
OAKLAND, CALIFORNIA**

June 2007

**SECOND QUARTER 2007
SITE MONITORING REPORT**

**REDWOOD REGIONAL PARK
SERVICE YARD
OAKLAND, CALIFORNIA**

Prepared for:

**EAST BAY REGIONAL PARK DISTRICT
P.O. BOX 5381
OAKLAND, CALIFORNIA 94605**

Prepared by:

**STELLAR ENVIRONMENTAL SOLUTIONS, INC.
2198 SIXTH STREET
BERKELEY, CALIFORNIA 94710**

July 9, 2007

Project No. 2007-17

July 9, 2007

Mr. Jerry Wickham, P.G.
Hazardous Materials Specialist
Local Oversight Program
Alameda County Department of Environmental Health
1131 Harbor Bay Parkway, Suite 250
Alameda, California 94502

Subject: Second Quarter 2007 Site Monitoring Report
Redwood Regional Park Service Yard Site – Oakland, California
Alameda County Environmental Health Fuel Leak Case No. RO0000246

Dear Mr. Wickham:

Attached is the referenced Stellar Environmental Solutions, Inc. report for the underground fuel storage tank (UFST) site at the Redwood Regional Park Service Yard, located at 7867 Redwood Road, Oakland, California. This project is being conducted for the East Bay Regional Park District (EBRPD), and follows previous site investigation and remediation activities (conducted since 1993) associated with former leaking UFSTs. The key regulatory agencies for this investigation are the Alameda County Environmental Health Care Services Agency, Department of Environmental Health; the Regional Water Quality Control Board; and the California Department of Fish and Game.

This report summarizes groundwater and surface monitoring and sampling activities conducted between April 1 and June 30, 2007 (Second Quarter 2007). Ongoing bioventing activities are reported in technical submittals separate from the ongoing groundwater and surface water monitoring quarterly reports; salient summary discussions will be included in the quarterly groundwater monitoring reports.

I declare, under penalty of perjury, that the information and/or recommendations contained in the attached document or report is true and correct to the best of my knowledge. If you have any questions regarding this report, please contact Mr. Neal Fujita of the EBRPD, or contact me directly at (510) 644-3123.

Sincerely,



Richard S. Makdisi, R.G., R.E.A.
Principal and Project Manager



cc: Carl Wilcox, California Department of Fish and Game
Neal Fujita, East Bay Regional Park District
State of California "GeoTracker" and Alameda County Environmental Health "ftp" systems

TABLE OF CONTENTS

Section	Page
1.0 INTRODUCTION.....	1
Project Background.....	1
Objectives and Scope of Work.....	1
Historical Corrective Actions and Investigations	1
Site Description.....	2
Regulatory Oversight	2
2.0 PHYSICAL SETTING.....	6
Site Lithology.....	6
Hydrogeology.....	10
3.0 Q2-2007 ACTIVITIES.....	13
Groundwater and Surface Water Monitoring Activities	13
Bioventing-Related Activities.....	15
4.0 REGULATORY CONSIDERATIONS	16
Groundwater Contamination.....	16
Surface Water Contamination	16
5.0 MONITORING EVENT ANALYTICAL RESULTS.....	18
Current Event Groundwater and Surface Water Results	18
Quality Control Sample Analytical Results	19
6.0 SUMMARY, CONCLUSIONS AND PROPOSED ACTIONS.....	22
Summary and Conclusions.....	22
Proposed Actions	24
7.0 REFERENCES AND BIBLIOGRAPHY	25
8.0 LIMITATIONS	29

Appendices

Appendix A	Historical Groundwater Monitoring Well Water Level Data
Appendix B	Groundwater Monitoring Field Documentation
Appendix C	Analytical Laboratory Report and Chain-of-Custody Record
Appendix D	Historical Groundwater and Surface Water Analytical Results

TABLES AND FIGURES

Tables	Page
Table 1 Groundwater Monitoring Well Construction and Groundwater Elevation Data – June 20, 2007 Monitoring Event Redwood Regional Park Corporation Yard, Oakland, California	14
Table 2 Groundwater and Surface Water Sample Analytical Results – June 20, 2007 Redwood Regional Park Corporation Yard, Oakland, California	20

Figures	Page
Figure 1 Site Location Map	3
Figure 2 Site Plan and Historical Sampling Locations	4
Figure 3 Geologic Cross-Section Locations	7
Figure 4 Geologic Cross-Sections A-A' through C-C'	8
Figure 5 Geologic Cross-Sections D-D' through F-F'	9
Figure 6 Groundwater Elevation Map – June 20, 2007	12
Figure 7 Groundwater Analytical Results and Gasoline Plume – June 2007	21

1.0 INTRODUCTION

PROJECT BACKGROUND

The subject property is the East Bay Regional Park District (EBRPD) Redwood Regional Park Service Yard located at 7867 Redwood Road in Oakland, Alameda County, California. The site has undergone site investigations and remediation since 1993 to address subsurface contamination caused by leakage from one or both of two former underground fuel storage tanks (UFSTs) that contained gasoline and diesel fuel. The Alameda County Health Care Services Agency, Department of Environmental Health (Alameda County Environmental Health) has provided regulatory oversight of the investigation since its inception (Alameda County Environmental Health Fuel Leak Case No. RO0000246). Other regulatory agencies with historical involvement in site review include the Regional Water Quality Control Board (Water Board) and the California Department of Fish and Game (CDFG).

OBJECTIVES AND SCOPE OF WORK

This report discusses the following activities conducted/coordinated by Stellar Environmental Solutions, Inc. (SES) between April 1 and June 30, 2007 (Second Quarter 2007):

- Collecting water levels in site wells to determine shallow groundwater flow direction;
- Sampling site wells for contaminant analysis and natural attenuation indicators; and
- Collecting surface water samples for contaminant analysis.

HISTORICAL CORRECTIVE ACTIONS AND INVESTIGATIONS

Previous SES reports have provided a full discussion of previous site remediation and investigations; site geology and hydrogeology; residual site contamination; conceptual model for contaminant fate and transport; and evaluation of hydrochemical trends and plume stability. Section 7.0 (References and Bibliography) of this report provides a listing of all technical reports for the site. The following is a summary of the general phases of site work:

- In 2000, a Feasibility Study report for the site was submitted to Alameda County Environmental Health. The study provided detailed analyses of the regulatory implications of site contamination and an assessment of viable corrective actions (SES, 2000d).

- Two instream bioassessment events were conducted in April 1999 and January 2000 to evaluate potential impacts to stream biota associated with the site contamination (no impacts were documented).
- Additional monitoring well installations and corrective action by ORC™ injection proposed by SES were approved by Alameda County Environmental Health in its January 8, 2001 letter to the EBRPD. Two phases of ORC™ injection were conducted—in September 2001 and July 2002.
- A total of 42 groundwater monitoring events have been conducted on a quarterly basis since project inception (November 1994), and a total of 11 groundwater monitoring wells are currently available for monitoring.
- A bioventing pilot test was conducted in September and October 2004 to evaluate the feasibility of this corrective action strategy, and the full-scale bioventing system was installed in November and December 2005. Bioventing activities conducted to date have been, and will continue to be, discussed in bioventing-specific technical reports, and updates will be provided in groundwater monitoring progress reports as they relate to this ongoing program.

SITE DESCRIPTION

Figure 1 shows the location of the project site. The site slopes to the west, from an elevation of approximately 564 feet above mean sea level (amsl) at the eastern edge of the service yard to approximately 530 feet amsl at Redwood Creek, which defines the approximate western edge of the project site with regard to this investigation. Figure 2 shows the site plan.

REGULATORY OVERSIGHT

The lead regulatory agency for the site investigation and remediation is Alameda County Environmental Health (case No. RO0000246), with oversight provided by the Water Board (State of California GeoTracker Global ID T0600100489). The CDFG is also involved with regard to water quality impacts to Redwood Creek. All workplans and reports have been submitted to these agencies. Historical Alameda County Environmental Health-approved revisions to the groundwater sampling program have included:

- Discontinuing hydrochemical sampling and analysis in wells MW-1, MW-3, MW-5, and MW-6;
- Discontinuing creek surface water sampling at upstream location SW-1;



3-D TopoQuads Copyright © 1999 DeLorme Yarmouth, ME 04096 Source Data: USGS 750 ft Scale: 1 : 25,000 Detail: 13-0 Datum: WGS84



SITE LOCATION ON U.S.G.S. TOPOGRAPHIC MAP

Redwood Reg. Park Service Yard
Oakland, CA

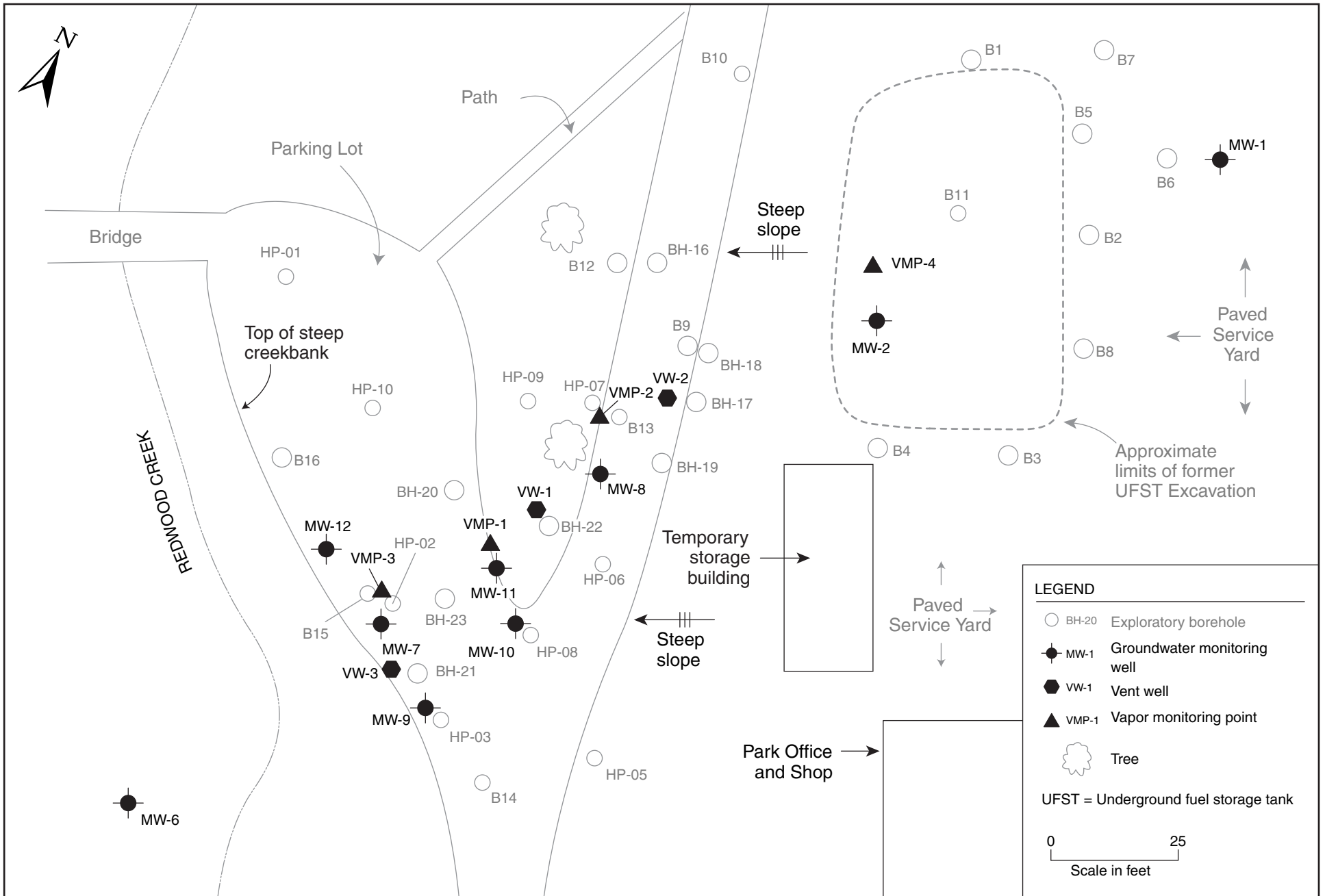
By: MJC

MARCH 2006

Figure 1



2006-17-01



LEGEND

- BH-20 Exploratory borehole
- MW-1 Groundwater monitoring well
- VW-1 Vent well
- ▲ VMP-1 Vapor monitoring point
- 🌳 Tree

UFST = Underground fuel storage tank

0 25
Scale in feet

- Discontinuing field measurement and laboratory analyses for natural attenuation indicators, to be re-implemented following the bioventing corrective action; and
- Reducing the frequency of creek surface water sampling from quarterly to semi-annually. The latter recommendation has not yet been implemented due to the EBRPD's continued concern over potential impacts to Redwood Creek.

The site is in compliance with the State Water Resources Control Board's GeoTracker requirements for uploading electronic data and reports. In addition, electronic copies of technical documentation reports published since Q2 2005 have been uploaded to Alameda County Environmental Health's file transfer protocol (ftp) system. Per Alameda County Environmental Health's October 31, 2005 directive entitled "Miscellaneous Administrative Topics and Procedures," effective January 31, 2006, paper copies of reports will no longer be provided to Alameda County Environmental Health.

2.0 PHYSICAL SETTING

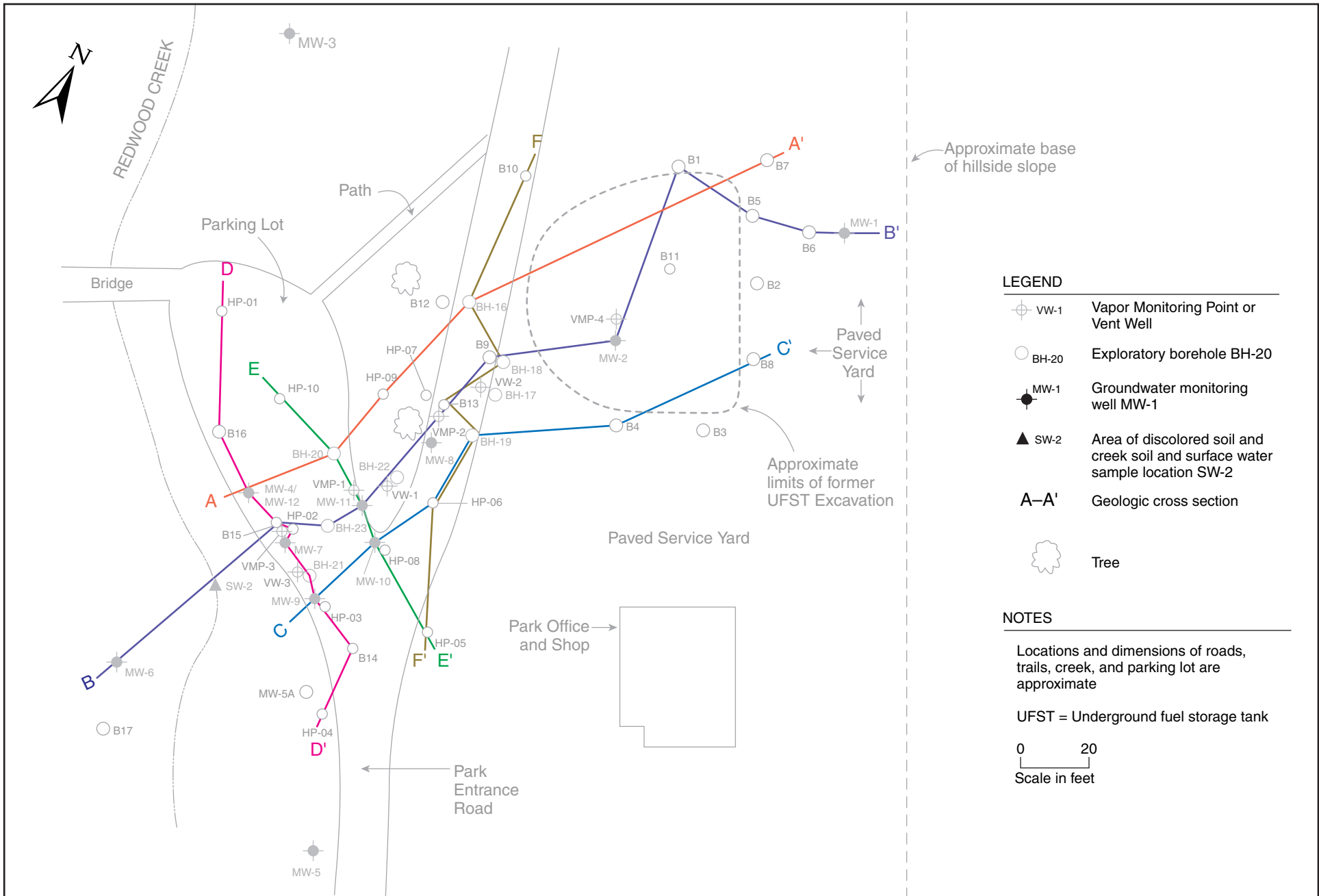
This section discusses the site hydrogeologic conditions based on geologic logging and water level measurements collected at the site since September 1993. Previous SES reports have included detailed discussions of site lithologic and hydrogeologic conditions. In May 2004, Alameda County Environmental Health requested, via email, additional evaluation of site lithology—specifically, the preparation of multiple geologic cross-sections parallel to and perpendicular to the contaminant plume's long axis.

SITE LITHOLOGY

Figure 3 shows the location of geologic cross-sections. Figure 4 shows three sub-parallel geologic cross-sections (A-A' through C-C') along the long axis of the groundwater contaminant plume (i.e., along local groundwater flow direction). Figure 5 shows three sub-parallel geologic cross-sections (D-D' through F-F') roughly perpendicular to groundwater direction. In each figure, the three sub-parallel sections are presented together for ease of comparison. Due to the small scale, these sections show only lithologic conditions (i.e., soil type and bedrock depth). Additional information on water level depths, historical range of water levels, and inferred thickness of soil contamination were presented in a previous report (SES, 2004c) for cross-section B-B'.

Shallow soil stratigraphy consists of a surficial 3- to 10-foot-thick clayey silt unit underlain by a 5- to 15-foot-thick silty clay unit. In the majority of boreholes, a 5- to 10-foot-thick clayey coarse-grained sand and clayey gravel unit that laterally grades to a clay or silty clay was encountered. This unit overlies a weathered siltstone at the base of the observed soil profile. Soils in the vicinity of MW-1 are inferred to be landslide debris.

A previous SES report (SES, 2004c) presented a bedrock surface isopleth map (elevation contours for the top of the bedrock surface) in the contaminant plume area. That isopleth map and Figures 4 and 5 indicate the following: The bedrock surface slopes steeply, approximately 0.3 feet/foot from east to west (toward Redwood Creek) in the upgradient portion of the site (from the service yard to under the entrance road), then shows a gentle east-to-west slope in the downgradient portion of the site (under the gravel parking area) toward Redwood Creek. This general gradient corresponds to the



LEGEND

	Vw-1 Vapor Monitoring Point or Vent Well
	BH-20 Exploratory borehole BH-20
	MW-1 Groundwater monitoring well MW-1
	SW-2 Area of discolored soil and creek soil and surface water sample location SW-2
A-A'	Geologic cross section
	Tree

NOTES

Locations and dimensions of roads, trails, creek, and parking lot are approximate

UFST = Underground fuel storage tank

0 20
Scale in feet

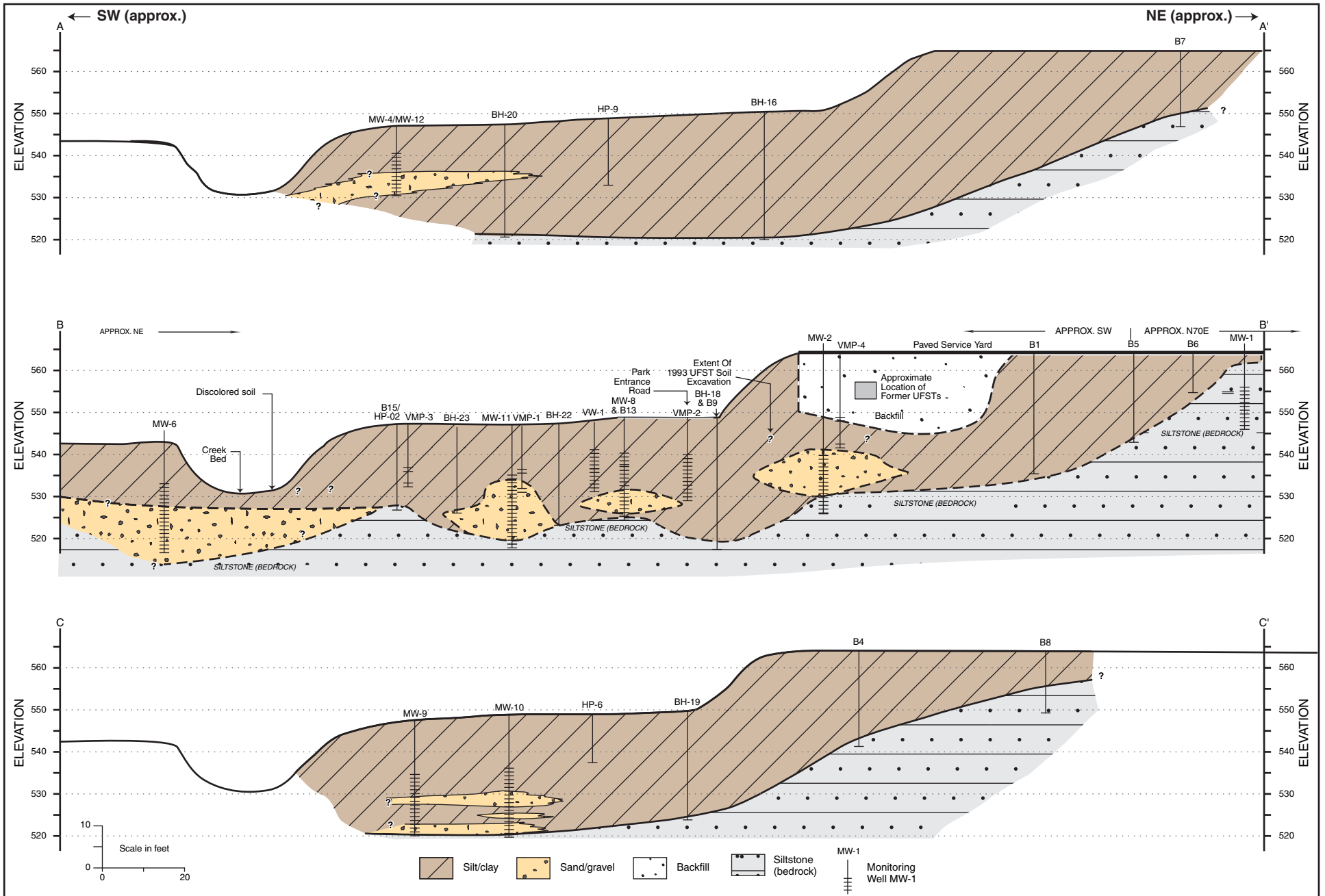
2005-66-11



**GEOLOGIC CROSS-SECTION LOCATIONS
Redwood Regional Park Service Yard, Oakland, CA**

Figure 3

by: MJC	DECEMBER 2005
---------	---------------

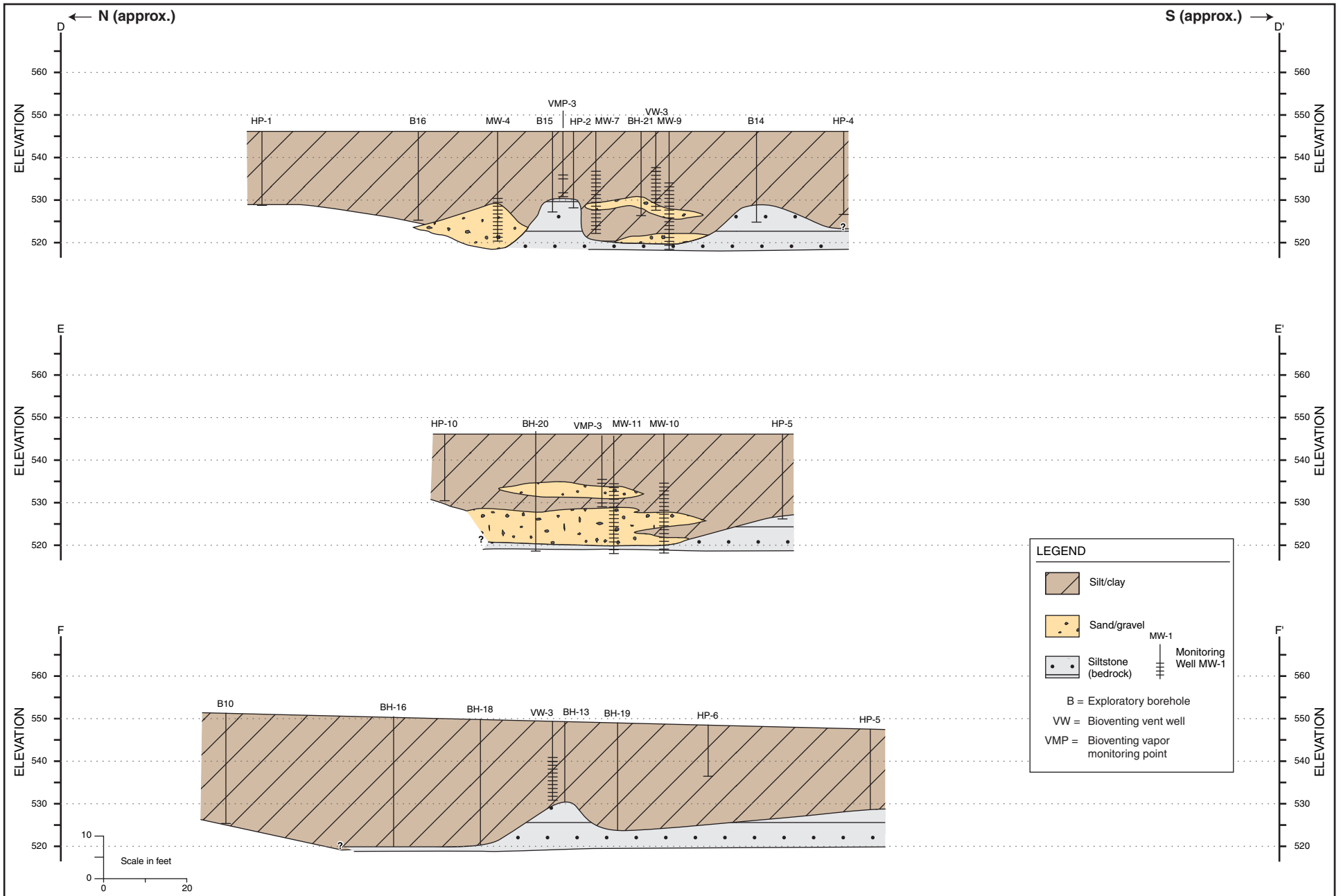


GEOLOGIC CROSS SECTIONS — A-A' through C-C'
Redwood Regional Park Service Yard, Oakland, CA

Figure 4

by: MJC

DECEMBER 2005



GEOLOGIC CROSS SECTIONS — D-D' through F-F'
Redwood Regional Park Service Yard, Oakland, CA

Figure 5

by: MJC

DECEMBER 2005

local groundwater flow direction. On the southern side of the plume area, bedrock slopes gently from south to north (the opposite of the general topographic gradient). Bedrock topography on the northern side of the plume cannot be determined from the available data.

In the central and downgradient portions of the groundwater contaminant plume (under the entrance road and the parking area), the bedrock surface has local, fairly steep elevation highs and lows, expressing a hummocky surface. Bedrock elevations vary by up to 10 feet over distances of less than 20 feet in this area. Local bedrock elevation highs are observed at upgradient location BH-13 (see cross-section F-F') and at downgradient location B15/HP-02 (see cross-section B-B'). Intervening elevation lows create troughs that trend north-south in the central portion of the plume and east-west in the downgradient portion of the plume.

The bedrock surface (and overlying unconsolidated sediment lithology) suggests that they may have at one time undergone channel erosion from a paleostream(s) flowing sub-parallel to present-day Redwood Creek. Because groundwater flows in the unconsolidated sediments that directly overlie the bedrock surface, it is likely that the hummocky bedrock surface affects local groundwater depth and flow direction. This is an important hydrogeologic control that should be considered if groundwater-specific corrective action is contemplated.

HYDROGEOLOGY

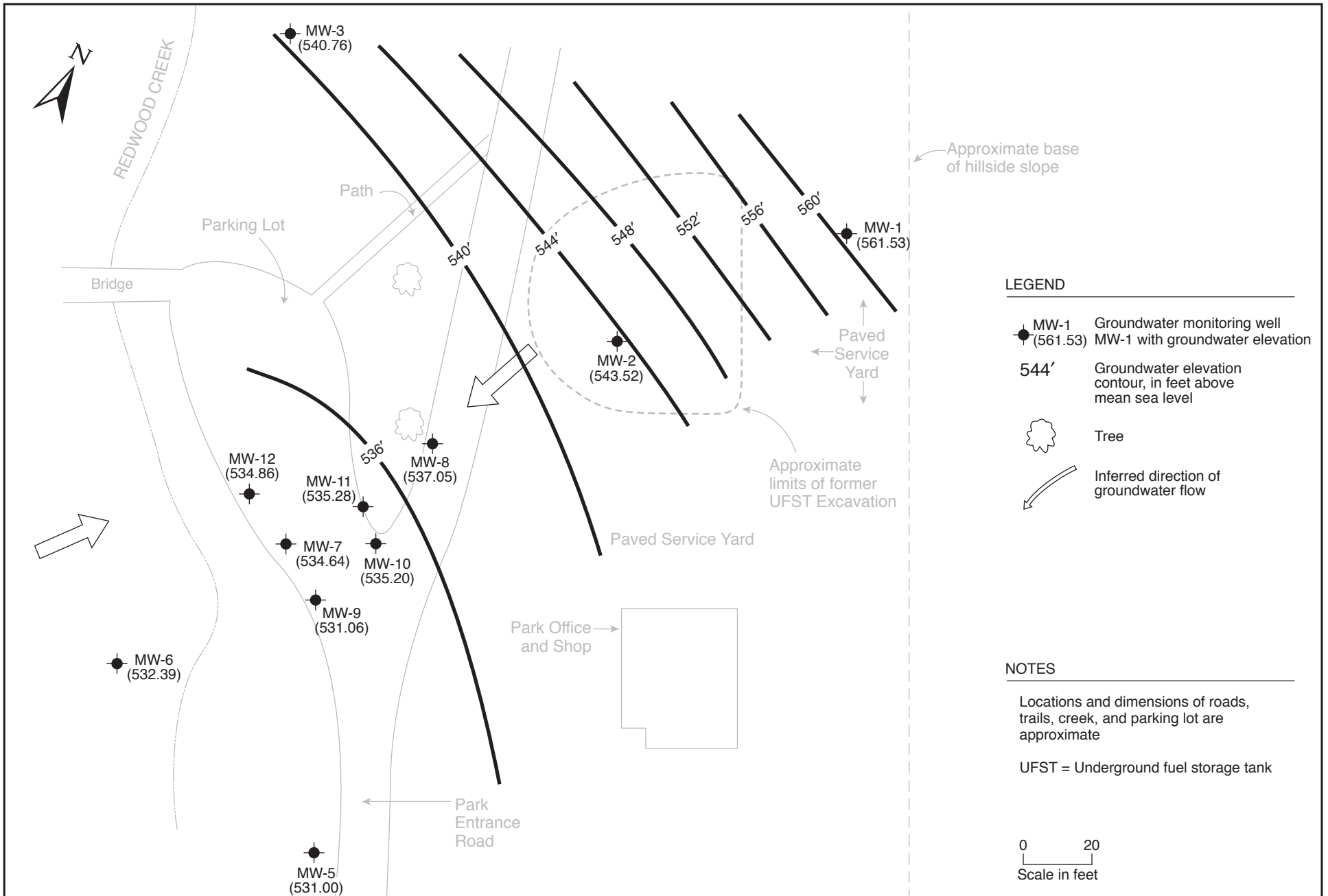
Groundwater at the site occurs under unconfined and semi-confined conditions, generally within the clayey, silty, sand-gravel zone. The top of this zone varies between approximately 12 and 19 feet below ground surface (bgs), and the bottom of the water-bearing zone (approximately 25 to 28 feet bgs) corresponds to the top of the siltstone bedrock unit. Seasonal fluctuations in groundwater depth create a capillary fringe of several feet that is saturated in the rainy period (late fall through early spring) and unsaturated during the remainder of the year. The thickness of the saturated zone plus the capillary fringe varies between approximately 10 and 15 feet in the area of contamination. Local perched water zones have been observed well above the top of the capillary fringe. Consistent with the bedrock isopleth map showing an elevation depression in the vicinity of MW-11, historical groundwater elevations in MW-11 are sporadically lower than in the surrounding area. As discussed in the previous sub-section, local groundwater flow direction likely is more variable than expressed by groundwater monitoring well data, due to local variations in bedrock surface topography.

Figure 6 is a groundwater elevation map constructed from the current event monitoring well equilibrated water levels. Table 1 (in Section 3.0) summarizes current event groundwater elevation data. Appendix A contains historical groundwater elevation data.

In the upgradient portion of the site (between well MW-1 and MW-2, in landslide debris and the former UFST excavation backfill), the groundwater gradient is approximately 0.2 feet per foot. Downgradient from (west of) the UFST source area (between MW-2 and Redwood Creek), the groundwater gradient is approximately 0.1 feet per foot. Groundwater elevations are approximately 1 to 4 feet lower than the previous (March 2007) event, and are at elevations typical for this site at this time of year. The direction of shallow groundwater flow during the current event was to the west-southwest (toward Redwood Creek), which is consistent with historical site groundwater flow direction.

We assume a site groundwater velocity of 7 to 10 feet per year using general look-up tables for permeability characteristics for the site-specific lithologic data obtained from site investigations. This velocity estimate is conservatively low, but does meet minimum-distance-traveled criteria from the date when contamination was first observed in Redwood Creek (1993) relative to the time of the UST installations (late 1970s). Locally, however, the groundwater velocity could vary significantly. Calculating the specific hydraulic conductivity critical to accurately estimating site-specific groundwater velocity would require direct testing of the water-bearing zone through a slug or pumping test.

Redwood Creek, which borders the site to the west, is a seasonal creek known for the occurrence of rainbow trout. Creek flow in the vicinity of the site shows significant seasonal variation, with little to no flow during the summer and fall dry season, and vigorous flow with depths exceeding 1 foot during the winter and spring wet season. The creek is a gaining stream (i.e., it is recharged by groundwater seeps and springs) in the vicinity of the site, and discharges into Upper San Leandro Reservoir located approximately 1 mile southeast of the site. During low-flow conditions, the groundwater table is below the creek bed in most locations (including the area of historical contaminated groundwater discharge); consequently, there is little to no observable creek flow at these times.



2007-17-03

3.0 Q2-2007 ACTIVITIES

This section presents the creek surface water and groundwater sampling and analytical methods for the most recent groundwater monitoring event (Q2-2007), conducted in June 2007. A summary of bioventing-related activities is also provided.

GROUNDWATER AND SURFACE WATER MONITORING ACTIVITIES

Groundwater and surface water analytical results are summarized in Section 5.0. Monitoring and sampling protocols were in accordance with the Alameda County Environmental Health-approved SES technical workplan (SES, 1998a). Current event activities included:

- Measuring static water levels and field analyzing pre-purge groundwater samples for indicators of natural attenuation (dissolved oxygen [DO], ferrous iron, and oxidation-reduction potential [ORP]) in all 11 site wells.
- Collecting post-purge groundwater samples for laboratory analysis of site contaminants from wells located within (or potentially within) the groundwater plume (MW-2, MW-7, MW-8, MW-9, MW-10, MW-11, and MW-12).
- Collecting Redwood Creek surface water samples for laboratory analysis from locations SW-2 and SW-3.

Creek sampling and groundwater monitoring/sampling was conducted on June 20, 2007. Creek sampling was conducted by the SES project manager. The locations of all site monitoring wells and creek water sampling locations are shown on Figure 2 (in Section 1.0). Well construction information and water level data are summarized in Table 1. Appendix B contains the groundwater monitoring field records for the current event.

Because it appears that the previously-injected ORC™ has been depleted, continued monitoring of the natural attenuation parameters—DO, ORP, nitrate, ferrous iron, and sulfate—is of marginal value until such time as additional corrective actions that would increase oxygen concentrations (e.g., bioventing) are implemented. Therefore, monitoring for natural attenuation parameters was discontinued following the Q3-2004 event.

Table 1
Groundwater Monitoring Well Construction and Groundwater Elevation Data –
June 20, 2007 Monitoring Event
Redwood Regional Park Corporation Yard, Oakland, California

Well	Well Depth	Screened Interval	TOC Elevation	Groundwater Elevation (6/20/06)
MW-1	18	7 to 17	565.83	562.51
MW-2	36	20 to 35	566.42	545.22
MW-3	42	7 to 41	560.81	541.71
MW-5	26	10 to 25	547.41	531.39
MW-6	26	10 to 25	545.43	532.42
MW-7	24	9 to 24	547.56	534.93
MW-8	23	8 to 23	549.13	539.30
MW-9	26	11 to 26	549.28	534.64
MW-10	26	11 to 26	547.22	535.60
MW-11	26	11 to 26	547.75	535.65
MW-12	25	10 to 25	544.67	535.12

Notes:

TOC = Top of casing.

Wells MW-1 through MW-6 are 4-inch diameter; all other wells are 2-inch diameter.

All elevations are feet above U.S. Geological Survey mean sea level.

Groundwater Level Monitoring and Sampling

Groundwater monitoring well water level measurements, purging, sampling, and field analyses were conducted by Blaine Tech Services under the supervision of SES personnel. Groundwater sampling was conducted in accordance with State of California guidelines for sampling dissolved analytes in groundwater associated with leaking UFSTs (State Water Resources Control Board, 1989), and followed the methods and protocols approved by Alameda County Environmental Health in the SES 1998 workplan (SES, 1998a).

As the first task of the monitoring event, static water levels were measured using an electric water level indicator. Pre-purge groundwater samples were then collected for field and laboratory analysis of natural attenuation indicators. The wells to be sampled for contaminant analyses were then purged (by bailing and/or pumping) of three wetted casing volumes. Aquifer stability parameters (temperature, pH, and electrical conductivity) were measured after each purged casing volume to ensure that representative formation water would be sampled. To minimize the

potential for cross-contamination, wells were purged and sampled in order of increasing contamination (based on the analytical results of the previous quarter).

The sampling-derived purge water and decontamination rinseate (approximately 80 gallons) from the current event was containerized in the onsite plastic tank. Purge water from future events will continue to be accumulated in the onsite tank until it is full, at which time the water will be transported offsite for proper disposal.

Creek Surface Water Sampling

Surface water sampling was conducted by SES on June 20, 2007. Surface water samples were collected from Redwood Creek location SW-2 (immediately downgradient of the former UFST source area and within the area of documented creek bank soil contamination), and SW-3 (approximately 500 feet downstream of the SW-2 location). In accordance with a previous SES recommendation approved by the Alameda County Environmental Health, upstream sample location SW-1 is no longer part of the surface water sampling program.

At the time of sampling, the creek was at a moderate stage, water depths at approximately 0.5 to 1 foot with a slow flow. At the SW-2 location, where contaminated groundwater discharge to the creek historically has been observed, an orange algae was observed growing on the saturated portion of the creek bank. This algae likely is utilizing the petroleum as a carbon source, and therefore is a good indicator of the presence of petroleum contamination. However, neither petroleum sheen nor odor were evident on/at the water surface.

BIOVENTING-RELATED ACTIVITIES

The bioventing system was installed and started up in December 2005/January 2006. One month of weekly system monitoring and air flow optimization events were conducted in January and February 2006. Monthly bioventing system operations and maintenance (O&M) events have been conducted since February 2006. Bioventing activities are discussed in detail in separate technical documents.

4.0 REGULATORY CONSIDERATIONS

The following is a summary of regulatory considerations regarding surface water and groundwater contamination. There are no Alameda County Environmental Health or Water Board cleanup orders for the site, although all site work has been conducted under oversight of these agencies.

GROUNDWATER CONTAMINATION

As specified in the Water Board's San Francisco Bay Region Water Quality Control Plan (Regional Water Quality Control Board, 1986), all groundwater are considered potential sources of drinking water unless otherwise approved by the Water Board, and are also assumed to ultimately discharge to a surface water body and potentially impact aquatic organisms. While it is likely that site groundwater would satisfy geology-related criteria for exclusion as a drinking water source (excessive total dissolved solids and/or insufficient sustained yield), Water Board approval for this exclusion has not been obtained for the site. As summarized in Table 2 (in Section 5.0), site groundwater contaminant levels are compared to two sets of criteria: 1) Water Board Tier 1 Environmental Screening Levels (ESLs) for sites where groundwater is a current or potential drinking water source; and 2) ESLs for sites where groundwater is not a current or potential drinking water source.

As stipulated in the ESL document (Water Board, 2004), the ESLs are not cleanup criteria; rather, they are conservative screening-level criteria designed to be protective of both drinking water resources and aquatic environments in general. The groundwater ESLs are composed of multiple components, including ceiling value, human toxicity, indoor air impacts, and aquatic life protection. Exceedance of ESLs suggests that additional investigation and/or remediation is warranted. While drinking water standards [e.g., Maximum Contaminant Levels (MCLs)] are published for the site contaminants of concern, Alameda County Environmental Health has indicated that impacts to nearby Redwood Creek are of primary importance, and that site target cleanup standards should be evaluated primarily in the context of surface water quality criteria.

SURFACE WATER CONTAMINATION

As summarized in Table 2 (in Section 5.0), site surface water contaminant levels are compared to the most stringent screening level criteria published by the State of California, U.S. Environmental Protection Agency, and U.S. Department of Energy. These screening criteria address chronic and

acute exposures to aquatic life. As discussed in the ESL document (Water Board, 2005), benthic communities at the groundwater/surface water interface (e.g., at site groundwater discharge location SW-2) are assumed to be exposed to the full concentration of groundwater contamination prior to dilution/mixing with the surface water). This was also a fundamental assumption in the instream benthic macroinvertebrate bioassessment events, which documented no measurable impacts.

Historical surface water sampling in the immediate vicinity of contaminated groundwater discharge (SW-2) has sporadically documented petroleum contamination, usually in periods of low stream flow, and generally at concentrations several orders of magnitude less than adjacent (within 20 feet) groundwater monitoring well concentrations. It is likely that mixing/dilution between groundwater and surface water precludes obtaining an “instantaneous discharge” surface water sample that is wholly representative of groundwater contamination at the discharge location. Therefore, the most conservative assumption is that surface water contamination at the groundwater/surface water interface is equivalent to the upgradient groundwater contamination (e.g., site downgradient wells MW-7, MW-9, and MW-12).

While site target cleanup standards for groundwater have not been determined, it is likely that no further action will be required by regulatory agencies when groundwater (and surface water) contaminant concentrations are all below their respective screening level criteria. Residual contaminant concentrations in excess of screening level criteria might be acceptable to regulatory agencies if a more detailed risk assessment (e.g., Tier 2 and/or Tier 3) demonstrates that no significant impacts are likely.

5.0 MONITORING EVENT ANALYTICAL RESULTS

This section presents the field and laboratory analytical results of the most recent monitoring event. Table 2 summarizes the contaminant analytical results of the current monitoring event. Figure 7 shows the current event contaminant analytical results and the inferred limits of the gasoline groundwater plume. Appendix C contains the certified analytical laboratory report and chain-of-custody record for the current event. Appendix D contains a summary of historical groundwater and surface analytical results.

CURRENT EVENT GROUNDWATER AND SURFACE WATER RESULTS

Current quarter site groundwater contaminant concentrations in monitoring wells MW-8 (located approximately half the distance between the former source area and the creek) and MW-9 exceeded their respective groundwater ESLs for all analytes except toluene and MTBE for both the *drinking water resource is threatened* and *is not threatened* criteria. Both ESL criteria were exceeded for all analytes except toluene, ethylbenzene, xylenes and MTBE in monitoring well MW-11 and for TEHd and TVHg in MW-7. The ESLs were exceeded under the *drinking water resource is threatened* criterion for benzene and MTBE in MW-2, benzene, ethylbenzene and total xylenes in MW-7 and benzene in MW-10.

The northern edge of the plume in the downgradient area of the plume is defined by well MW-12. Groundwater contaminant concentrations exceeded their respective ESLs for gasoline and diesel in this well. The southern edge of the plume in the downgradient area is not strictly defined; however, based on historical groundwater data, it appears to be located between well MW-9 and well MW-5. The current event contaminant plume geometry is consistent with recent historical contaminant distribution, showing the center of contaminant mass in groundwater located downgradient of the former source area.

There were no analytes detected in the two surface water samples.

QUALITY CONTROL SAMPLE ANALYTICAL RESULTS

Laboratory QC samples (e.g., method blanks, matrix spikes, surrogate spikes) were analyzed by the laboratory in accordance with requirements of each analytical method. All laboratory QC sample

results and sample holding times were within the acceptance limits of the methods (see Appendix C).

Table 2
Groundwater and Surface Water Sample
Analytical Results – June 20, 2007
Redwood Regional Park Corporation Yard, Oakland, California

Location	Contaminant						
	TVHg	TEHd	Benzene	Toluene	Ethyl-benzene	Total Xylenes	MTBE
GROUNDWATER SAMPLES							
MW-2	<50	<50	3.5	<0.5	<0.5	< 0.5	8.0
MW-7	6,800	3,000	30	<1.0	160	27.4	<4.0
MW-8	10,000	3,500	220	11.0	670	675	<4.0
MW-9	7,100	2,200	75	5.2	480	298.1	<4.0
MW-10	60	65	2.4	<0.5	1.6	<0.5	4.0
MW-11	4,300	2,200	120	<0.5	140	6.6	<4.0
MW-12	590	280	<0.5	<0.5	4.5	0.93	<2.0
Groundwater ESLs ^(a)	100 / 500	100 / 640	1.0 / 46	40 / 130	30 / 290	20 / 100	5.0 / 1,800
REDWOOD CREEK SURFACE WATER SAMPLES							
SW-2	<50	<50	<0.5	<0.5	<0.5	<0.5	<2.0
SW-3	<50	<50	<0.5	<0.5	<0.5	<0.5	<2.0
Surface Water Screening Levels ^(a)	100/ 5,000	100/ 2,500	170/ 2,000	40/ 40	30/ 30	20/ 530	5.0/ 180

Notes:

^(a) Water Board Environmental Screening Levels (drinking water resource threatened/not threatened) (Water Board, 2006).

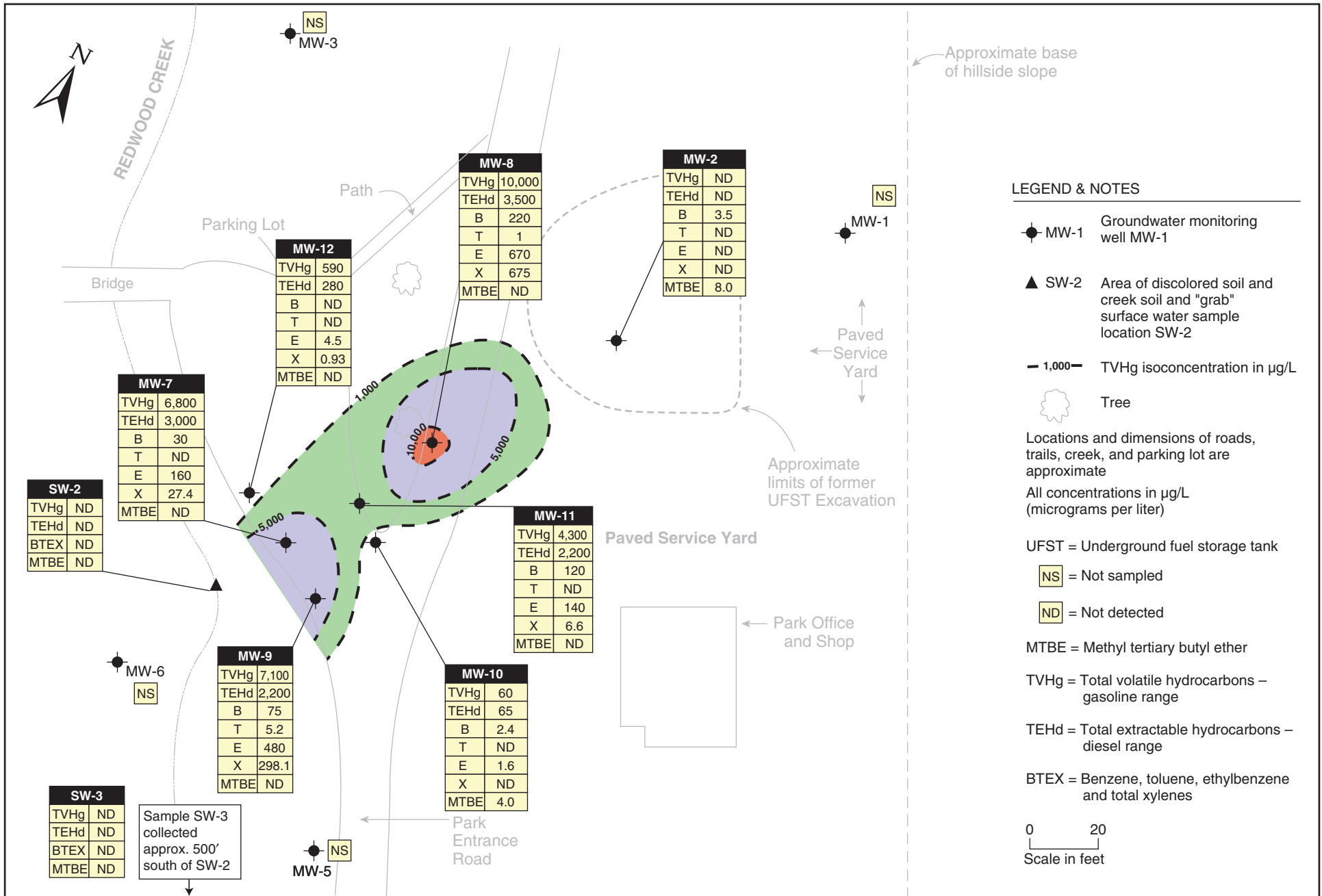
MTBE = methyl *tertiary*-butyl ether

TVHg = total volatile hydrocarbons - gasoline range

TEHd = total extractable hydrocarbons - diesel range

All concentrations expressed in µg/L (equivalent to parts per billion).

Samples in **bold-face type** exceed the ESL for threatened drinking water.



6.0 SUMMARY, CONCLUSIONS AND PROPOSED ACTIONS

The following conclusions and proposed actions are based on the findings of the current event activities, as well as on salient historical data.

SUMMARY AND CONCLUSIONS

- Groundwater sampling has been conducted on an approximately quarterly basis since November 1994 (42 events in the initial site wells). A total of 11 site wells are available for monitoring; 7 of the available wells are currently monitored for contamination.
- Site contaminants of concern include gasoline, diesel, BTEX, and MTBE. Current contaminant concentrations in groundwater exceed regulatory screening levels for diesel and gasoline, benzene, ethyl-benzene, total xylenes, and MTBE. There were no contaminants detected in the two surface water samples.
- The primary environmental risk is discharge of contaminated groundwater to the adjacent Redwood Creek. A stream bioassessment concluded that there were no direct impacts to the surface water benthic community; however, groundwater contamination is sporadically detected in surface water samples, and there is historical visual evidence of plume discharge at the creek/groundwater interface. Surface water samples have sporadically exceeded surface water ESL criteria for gasoline, diesel, and benzene, and generally only under low creek flow conditions. An in-stream bioassessment evaluation in 1999-2000 determined no impacts to the benthic macroinvertebrate community.
- The existing well layout adequately constrains the lateral extent of groundwater contamination, and the vertical limit is very likely the top of the near-surface (25 to 28 feet) siltstone bedrock. The saturated interval extends approximately 12 to 15 feet from top of bedrock through the capillary fringe. Groundwater elevations fluctuate seasonally, creating a capillary fringe that varies seasonally in thickness.
- The groundwater contaminant plume has become disconnected from its original source, but continues to be fed from the residual hydrocarbon concentrations in the soil. The groundwater plume has migrated well beyond the former source area (represented by well MW-2) toward Redwood Creek. The plume of groundwater contamination above screening levels appears to be approximately 120 feet long and approximately 50 feet wide. The zone of greatest contamination (greater than 1,000 µg/L TPH) is currently an approximately 20- to

30-foot-wide by 50-foot-long area extending from mid-plume well MW-8 to the most downgradient well MW-7.

- The contaminant plume is neither stable nor reducing, as groundwater contaminant concentrations fluctuate seasonally, and the center of mass of the contaminant plume (represented by maximum concentrations) has alternated between mid-plume and downgradient wells in recent history. Recent groundwater contaminant concentrations are below sitewide historical maxima, and there is no indication that maximum site groundwater concentrations are increasing, which suggests that “worst case” contaminant concentrations may have been reached.
- A two-phase ORC™ injection corrective action program was implemented at the site. In September 2001, approximately 3,000 pounds of ORC™ was injected into 44 boreholes over a 4,400-square foot area of the maximum groundwater contamination. In June 2002, approximately 1,000 pounds of ORC™ was injected in 30 boreholes over a smaller area that showed residual high contaminant concentrations following the initial injection phase. The ORC™ was injected over the full saturated interval (including the capillary fringe). The findings indicate that the corrective action was partially effective in reducing the lateral extent of the groundwater contaminant plume; however, initial contaminant reductions were followed by rebounding to pre-injection concentrations. The data suggest that site conditions support aerobic biodegradation when not limited by oxygen concentrations, notably on the plume margins and upgradient former source area, but not along the centerline of the contaminant plume.
- A September 2003 exploratory borehole program confirmed that sorbed-phase contamination in the seasonally-unsaturated zone is a primary source of long-term contaminant contribution to the groundwater plume. Reduction/removal of this contamination will be necessary to eliminate continued discharge of contaminated groundwater to Redwood Creek and ultimately obtain site closure.
- Soil bioventing is a proven technology for contaminant mass removal in the unsaturated zone, under conditions similar to the site, and appears to be the most appropriate corrective action strategy giving consideration to technical, cost, safety, and aesthetic issues. A 2- to 3-year program of bioventing will likely reduce unsaturated zone contamination such that it will no longer be a long-term source of contamination to groundwater. A full-scale bioventing system was installed in November/December 2005, and began operating in December 2005.

PROPOSED ACTIONS

The EBRPD proposes to implement the following actions to address regulatory concerns:

- Continue the quarterly program of creek and groundwater sampling and reporting.
- Continue to inform regulators of site progress and seek their concurrence with proposed actions.
- Operate the bioventing system as a corrective action to move the site toward closure, and report those results in bioventing-specific technical reports.
- Continue to evaluate analytical results (and bioventing contaminant removal data) in the context of hydrochemical trends, impacts of groundwater contamination on Redwood Creek, and effectiveness of the corrective action.
- Continue to make required Electronic Data Format uploads to the State of California GeoTracker database, and upload an electronic copy of technical reports to Alameda County Environmental Health's ftp system.

7.0 REFERENCES AND BIBLIOGRAPHY

- Parsons Engineering Science (Parsons), 1998. Quarterly Progress Report 11, Redwood Regional Park Service Yard, Oakland, California. January 28.
- Parsons Engineering Science (Parsons), 1997a. Quarterly Progress Report 7, Redwood Regional Park Service Yard, Oakland, California. January 31.
- Parsons Engineering Science (Parsons), 1997b. Quarterly Progress Report 8 and Annual Summary Assessment, Redwood Regional Park Service Yard, Oakland, California. April 4.
- Parsons Engineering Science (Parsons), 1997c. Quarterly Progress Report 9, Redwood Regional Park Service Yard, Oakland, California. June 30.
- Parsons Engineering Science (Parsons), 1997d. Quarterly Progress Report 10, Redwood Regional Park Service Yard, Oakland, California. September 22.
- Parsons Engineering Science (Parsons), 1996a. Quarterly Progress Report 5, Redwood Regional Park Service Yard, Oakland, California. June 6.
- Parsons Engineering Science (Parsons), 1996b. Quarterly Progress Report 6, Redwood Regional Park Service Yard, Oakland, California. September 24.
- Parsons Engineering Science (Parsons), 1995a. Quarterly Progress Report 2, Redwood Regional Park Service Yard, Oakland, California. March 8.
- Parsons Engineering Science (Parsons), 1995b. Quarterly Progress Report 3, Redwood Regional Park Service Yard, Oakland, California. June 23.
- Parsons Engineering Science (Parsons), 1995c. Quarterly Progress Report 4 and Annual Summary Assessment (November 1994 - August 1995), Redwood Regional Park Service Yard, Oakland, California. November 13.
- Parsons Engineering Science (Parsons), 1994a. Creek and Soil Sampling at Redwood Regional Park, Oakland, California. March 2.

- Parsons Engineering Science (Parsons), 1994b. Creek Surface Water at Redwood Regional Park, Oakland, California. May 13.
- Parsons Engineering Science (Parsons), 1994c. Workplan for Groundwater Characterization Program at East Bay Regional Park Service Yard, Oakland, California. August 17.
- Parsons Engineering Science (Parsons), 1994d. Quarterly Progress Report 1, Redwood Regional Park Service Yard, Oakland, California. December 28.
- Parsons Engineering Science (Parsons), 1993a. Closure of Underground Fuel Storage Tanks and Initial Site Characterization at Redwood Regional Park Service Yard, Oakland, California. December 16.
- Parsons Engineering Science (Parsons), 1993b. Workplan for Site Characterization at East Bay Regional Park District, Redwood Regional Park Corporation Yard, Oakland, Alameda County, California. September 3.
- Regional Water Quality Control Board, San Francisco Bay Region (Water Board), 2005. Screening for Environmental Concerns at Sites with Contaminated Soil and Groundwater. February (revised November 2006).
- Regional Water Quality Control Board, San Francisco Bay Region (Water Board), 1995. *San Francisco Bay Region Water Quality Control Plan*.
- State Water Resources Control Board, 1989. Leaking Underground Fuel Tank Field Manual: Guidelines for Site Assessment, Cleanup, and Underground Storage Tank Closure. State of California Leaking Underground Fuel Tank Task Force. October.
- Stellar Environmental Solutions, Inc. (SES), 2006a. Fourth Quarter 2005 Groundwater Monitoring and Annual Summary Report, Redwood Regional Park Service Yard, Oakland, California. January 20.
- Stellar Environmental Solutions, Inc. (SES), 2006b. First Quarter 2006 Site Monitoring Report, Redwood Regional Park Service Yard, Oakland, California. April 21.
- Stellar Environmental Solutions, Inc. (SES), 2005a. Fourth Quarter 2004 Groundwater Monitoring and Annual Summary Report, Redwood Regional Park Service Yard, Oakland, California. January 24.
- Stellar Environmental Solutions, Inc. (SES), 2005b. First Quarter 2005 Site Monitoring Report, Redwood Regional Park Service Yard, Oakland, California. March 31.

Stellar Environmental Solutions, Inc. (SES), 2005C. Second Quarter 2005 Site Monitoring Report, Redwood Regional Park Service Yard, Oakland, California. July 12.

Stellar Environmental Solutions, Inc. (SES), 2005d. Third Quarter 2005 Site Monitoring Report, Redwood Regional Park Service Yard, Oakland, California. October 13.

Stellar Environmental Solutions, Inc. (SES), 2004a. Year 2003 Annual Summary Report, Redwood Regional Park Service Yard, Oakland, California. January 15.

Stellar Environmental Solutions, Inc. (SES), 2004b. First Quarter 2004 Site Monitoring Report, Redwood Regional Park Service Yard, Oakland, California. April 14.

Stellar Environmental Solutions, Inc. (SES), 2004c. Second Quarter 2004 Site Monitoring Report, Redwood Regional Park Service Yard, Oakland, California. July 16.

Stellar Environmental Solutions, Inc. (SES), 2004d. Third Quarter 2004 Site Monitoring Report, Redwood Regional Park Service Yard, Oakland, California. October 12.

Stellar Environmental Solutions, Inc. (SES), 2003a. Year 2002 Annual Summary Report, Redwood Regional Park Service Yard, Oakland, California. January 27.

Stellar Environmental Solutions, Inc. (SES), 2003b. First Quarter 2003 Site Monitoring Report, Redwood Regional Park Service Yard, Oakland, California. May 5.

Stellar Environmental Solutions, Inc. (SES), 2003c. Second Quarter 2003 Site Monitoring Report, Redwood Regional Park Service Yard, Oakland, California. July 29.

Stellar Environmental Solutions, Inc. (SES), 2003d. Third Quarter 2003 Site Monitoring Report, Redwood Regional Park Service Yard, Oakland, California. October 3.

Stellar Environmental Solutions, Inc. (SES), 2002a. First Quarter 2002 Site Monitoring Report, Redwood Regional Park Service Yard, Oakland, California. April 16.

Stellar Environmental Solutions, Inc. (SES), 2002b. Second Quarter 2002 Site Monitoring Report, Redwood Regional Park Service Yard, Oakland, California. July 23.

Stellar Environmental Solutions, Inc. (SES), 2002c. Third Quarter 2002 Site Monitoring Report, Redwood Regional Park Service Yard, Oakland, California. October 14.

Stellar Environmental Solutions, Inc. (SES), 2001a. Monitoring Well Installation and Site Monitoring Report, Redwood Regional Park Service Yard, Oakland, California. February 8.

- Stellar Environmental Solutions, Inc. (SES), 2001b. Site Monitoring Report, Redwood Regional Park Service Yard, Oakland, California. May 4.
- Stellar Environmental Solutions, Inc. (SES), 2001c. Well Installation, Site Monitoring, and Corrective Action Report, Redwood Regional Park Service Yard, Oakland, California. October 26.
- Stellar Environmental Solutions, Inc. (SES), 2000a. Site Monitoring Report, Redwood Regional Park Service Yard, Oakland, California. April 21.
- Stellar Environmental Solutions, Inc. (SES), 2000b. Workplan for Groundwater Monitoring Well Installations, Redwood Regional Park Service Yard, Oakland, California. October 19.
- Stellar Environmental Solutions, Inc. (SES), 2000c. Site Monitoring Report, Redwood Regional Park Service Yard, Oakland, California. October 19.
- Stellar Environmental Solutions, Inc. (SES), 2000d. Site Feasibility Study Report, Redwood Regional Park Service Yard, Oakland, California. October 20.
- Stellar Environmental Solutions, Inc. (SES), 1999a. Workplan for Subsurface Investigation, Redwood Regional Park Service Yard, Oakland, California. April 8.
- Stellar Environmental Solutions, Inc. (SES), 1999b. Residual Contamination Investigation and Remedial Action Assessment Report, Redwood Regional Park Service Yard, Oakland, California. June 9.
- Stellar Environmental Solutions, Inc. (SES), 1998a. Workplan for Continued Site Investigation and Closure Assessment, Redwood Regional Park Service Yard, Oakland, California. October 9.
- Stellar Environmental Solutions, Inc. (SES), 1998b. Site Investigation and Closure Assessment Report, Redwood Regional Park Service Yard, Oakland, California. December 4.

8.0 LIMITATIONS

This report has been prepared for the exclusive use of the East Bay Regional Park District, its authorized representatives, and the regulatory agencies. No reliance on this report shall be made by anyone other than those for whom it was prepared.

The findings and conclusions presented in this report are based on the review of previous investigators' findings at the site, as well as onsite activities conducted by SES since September 1998. This report has been prepared in accordance with generally accepted methodologies and standards of practice. The SES personnel who performed this work are qualified to perform such investigations and have accurately reported the information available, but cannot attest to the validity of that information. No warranty, expressed or implied, is made as to the findings, conclusions, and recommendations included in the report.

The findings of this report are valid as of the present. Site conditions may change with the passage of time, natural processes, or human intervention, which can invalidate the findings and conclusions presented in this report. As such, this report should be considered a reflection of the current site conditions as based on site characterization and corrective actions completed.

APPENDIX A

Historical Groundwater Monitoring Well Water Level Data

**HISTORICAL GROUNDWATER ELEVATIONS IN MONITORING WELLS
REDWOOD REGIONAL PARK SERVICE YARD
7867 REDWOOD ROAD, OAKLAND, CALIFORNIA**

Well I.D.	MW-1	MW-2	MW-3	MW-4	MW-5	MW-6	MW-7	MW-8	MW-9	MW-10	MW-11	MW-12
TOC Elevation (a)	565.83	566.42	560.81	548.10	547.41	545.43	547.56	549.13	549.28	547.22	547.75	544.67
Date Monitored	Groundwater Elevations (feet above mean sea level)											
09/18/98	563.7	544.2	540.8	534.5	531.1	545.6						
04/06/99	565.2	546.9	542.3	535.6	532.3	532.9						
12/20/99	562.9	544.7	541.5	534.9	531.2	532.2						
09/28/00	562.8	542.7	538.3	532.2	530.9	532.0						
01/11/01	562.9	545.1	541.7	535.0	531.2	532.3	534.9	538.1				
04/13/01	562.1	545.7	541.7	535.1	531.5	532.4	535.3	539.8				
09/01/01	560.9	542.0	537.7	533.9	530.7	531.8	534.0	535.6				
12/17/01	562.2	545.2	542.2	534.8	531.4	532.4	534.8	538.4	534.6	535.7	535.2	
03/14/02	563.0	547.1	542.2	535.5	532.4	533.3	535.7	541.8	535.0	537.6	536.6	
06/18/02	562.1	544.7	541.1	534.6	531.2	532.2	534.8	537.9	534.7	535.6	535.3	
09/24/02	561.4	542.2	537.3	533.5	530.6	531.8	533.5	535.5	535.3	533.8	531.7	
12/18/02	562.4	545.0	542.0	534.8	531.5	532.5	534.6	537.1	536.5	535.2	532.8	
03/27/03	562.6	545.7	541.7	534.8	531.6	532.4	535.1	539.9	537.2	536.2	533.6	
06/19/03	562.3	544.9	541.5	534.8	531.3	532.3	534.9	538.2	536.9	535.7	533.2	
09/10/03	561.6	542.1	537.9	533.8	530.8	531.9	533.7	535.6	535.6	534.1	531.9	
12/10/03	562.4	542.7	537.6	533.7	530.9	531.9	533.7	535.2	535.5	533.8	531.7	
03/18/04	563.1	546.6	541.9	535.0	531.7	532.4	535.2	540.9	537.4	536.6	533.8	
06/17/04	562.1	544.3	540.7	534.3	531.0	532.1	534.6	537.4	536.5	535.1	532.7	
09/21/04	561.5	541.1	536.5	533.1	530.5	531.6	533.1	534.7	532.7	533.2	533.2	
12/14/04	562.2	545.3	541.7	534.7	531.4	532.2	534.6	540.4	536.7	535.5	532.9	
03/16/05	563.8	547.3	541.7	535.3	532.4	532.8	535.6	541.8	538.0	537.1	534.2	
06/15/05	562.9	545.9	541.6	535.0	531.7	532.5	535.0	540.0	535.0	536.1	535.6	
09/13/05	562.3	543.5	539.7	534.4	530.9	532.2	534.3	536.7	536.1	534.7	532.4	
12/15/05	562.2	544.3	541.4	(b)	531.0	532.2	534.5	537.3	534.1	534.7	534.9	535.1
03/30/06	565.8	548.6	542.7	(b)	533.9	534.4	536.2	542.3	536.4	537.3	537.6	535.7
06/20/06	563.6	545.4	541.6	(b)	531.5	532.5	534.9	538.6	534.6	536.2	535.5	535.0
09/29/06	561.9	542.8	539.0	(b)	530.7	532.1	535.1	536.1	533.7	534.6	534.7	534.7
12/14/06	562.9	544.2	541.5	(b)	531.1	532.3	534.7	536.7	534.0	534.8	535.2	535.0
03/21/07	562.5	545.2	541.7	(b)	531.4	532.4	534.9	539.3	534.6	535.6	535.6	535.1
06/20/07	561.5	543.5	540.8	(b)	531.0	532.4	534.6	537.1	531.1	535.2	535.3	534.9

TOC = Top of well Casing
(a) TOC Elevations resurveyed on December 15, 2005 in accordance GeoTracker requirements.
(b) Well decommissioned and replaced by MW-12 in December 2005.

APPENDIX B

Groundwater Monitoring Field Documentation

WELLHEAD INSPECTION CHECKLIST

Date 06-20-07 Client Stellar Env.

Site Address Redwood Regional Park Service Yard, Oakland, CA

Job Number 070620-DR 1 Technician DR; WW, KF

Well ID	Well Inspected - No Corrective Action Required	Water Bailed From Wellbox	Wellbox Components Cleaned	Cap Replaced	Debris Removed From Wellbox	Lock Replaced	Other Action Taken (explain below)	Well Not Inspected (explain below)
MW-1	X							
MW-2	X							
MW-3	X							
MW-5	X							
MW-6	X							
MW-7	X							
MW-8	X	X					X	
MW-9	X							
MW-10	X ww						X	
MW-11	X							
MW-12	X							

NOTES: MW-10: Annular seal dropped
MW-8: tab stripped: 3/2

WELL GAUGING DATA

Project # 070620-DR1 Date 06-20-07 Client Stellar Env.

Site Redwood Regional Park Service Yard, Oakland, CA

Well ID	Time	Well Size (in.)	Sheen / Odor	Depth to Immiscible Liquid (ft.)	Thickness of Immiscible Liquid (ft.)	Volume of Immiscibles Removed (ml)	Depth to water (ft.)	Depth to well bottom (ft.)	Survey Point: TOB or TOC	Notes
MW-1	0948	4	⊗ No	57	11 in	well	4.30	19.29		
MW-2	0939	4					22.90	38.91		
MW-3	0859	4					20.05	45.05		
MW-5	0927	4					16.41	27.06		
MW-6	0931	4					13.04	27.80		
MW-7	0920	2					12.92	25.44		
MW-8	0958	2					12.08	22.21		
MW-9	0924	2					18.22	30.31		
MW-10	0915	2					12.02	28.36		
MW-11	0911	2					12.47	28.86		
MW-12	0908	2					9.81	23.81	↓	

WELL MONITORING DATA SHEET

Project #: <u>670620-DR1</u>		Client: <u>Skiliv Env.</u>	
Sampler: <u>DR</u>		Date: <u>6/20/07</u>	
Well I.D.: <u>MW-2</u>		Well Diameter: 2 3 <u>(4)</u> 6 8	
Total Well Depth (TD): <u>38.91</u>		Depth to Water (DTW): <u>22.90</u>	
Depth to Free Product:		Thickness of Free Product (feet):	
Referenced to: <u>(PVD)</u> Grade		D.O. Meter (if req'd): YSI HACH	
DTW with 80% Recharge [(Height of Water Column x 0.20) + DTW]: <u>26.10</u>			

Purge Method: Bailer	Waterra	Sampling Method: Bailer
Disposable Bailer	Peristaltic	<input checked="" type="checkbox"/> Disposable Bailer
Positive Air Displacement	Extraction Pump	Extraction Port
<input checked="" type="checkbox"/> Electric Submersible	Other _____	Dedicated Tubing
Other: _____		

10.4 (Gals.) X 3 = 31.2 Gals.
 1 Case Volume Specified Volumes Calculated Volume

Well Diameter	Multiplier	Well Diameter	Multiplier
1"	0.04	4"	0.65
2"	0.16	6"	1.47
3"	0.37	Other	radius ² * 0.163

Time	Temp (°F or °C)	pH	Cond (mS or µS)	Turbidity (NTUs)	Gals. Removed	Observations
10:18	15.9	7.3	816	39	10.4	clear
10:20	15.5	7.2	832	107	20.8	" "
10:22	15.7	7.3	824	201	31.2	" "
						DTW = 35.04

Did well dewater? Yes No Gallons actually evacuated: 31.2

Sampling Date: 6/20/07 Sampling Time: 1135 Depth to Water: 25.91

Sample I.D.: MW-2 Laboratory: Kiff CalScience Other (CIT)

Analyzed for: TPH-G BTEX MTBE TPH-D Oxygenates (5) Other: Sec 60C

EB I.D. (if applicable): @ _____ Time Duplicate I.D. (if applicable):

Analyzed for: TPH-G BTEX MTBE TPH-D Oxygenates (5) Other:

D.O. (if req'd): Pre-purge:	mg/L	Post-purge:	mg/L
O.R.P. (if req'd): Pre-purge:	mV	Post-purge:	mV

WELL MONITORING DATA SHEET

Project #: <u>070620-DR1</u>	Client: <u>Skellar Env.</u>
Sampler: <u>DR</u>	Date: <u>6/20/07</u>
Well I.D.: <u>MW-7</u>	Well Diameter: <u>2</u> 3 4 6 8
Total Well Depth (TD): <u>25.44</u>	Depth to Water (DTW): <u>12.92</u>
Depth to Free Product:	Thickness of Free Product (feet):
Referenced to: <u>PVD</u> Grade	D.O. Meter (if req'd): YSI HACH
DTW with 80% Recharge [(Height of Water Column x 0.20) + DTW]: <u>15.42</u>	

Purge Method: Bailer Water Sampling Method: Bailer
 Disposable Bailer Peristaltic Disposable Bailer
 Positive Air Displacement Extraction Pump Extraction Port
 Electric Submersible Other _____ Dedicated Tubing
 Other: _____

2.0 (Gals.) X 3 = 6.0 Gals.
 Case Volume Specified Volumes Calculated Volume

Well Diameter	Multiplier	Well Diameter	Multiplier
1"	0.04	4"	0.65
2" -	0.16	6"	1.47
3"	0.37	Other	radius ² * 0.163

Time	Temp (°F or °C)	pH	Cond. (mS or µS)	Turbidity (NTUs)	Gals. Removed	Observations
1059	13.3	6.8	822	896	2.0	odor, cloudy
1101	13.2	7.0	817	>1000	4.0	cloudy, gray
1103	13.2	7.1	797	>1000	6.0	cloudy, gray

Did well dewater? Yes No Gallons actually evacuated: 6

Sampling Date: 6/20/07 Sampling Time: 1108 Depth to Water: 13.12

Sample I.D.: MW-7 Laboratory: Kiff CalScience Other (CIT)

Analyzed for: TPH-G BTEX MTBE TPH-D Oxygenates (5) Other: Sec 6c

EB I.D. (if applicable): _____ @ _____ Time Duplicate I.D. (if applicable): _____

Analyzed for: TPH-G BTEX MTBE TPH-D Oxygenates (5) Other: _____

D.O. (if req'd):	Pre-purge:	mg/L	Post-purge:	mg/L
O.R.P. (if req'd):	Pre-purge:	mV	Post-purge:	mV

WELL MONITORING DATA SHEET

Project #: 670620-DR1	Client: Sklar Env.
Sampler: DR	Date: 6/20/07
Well I.D.: MW-8	Well Diameter: <u>2</u> 3 4 6 8
Total Well Depth (TD): 22.21	Depth to Water (DTW): 12.08
Depth to Free Product:	Thickness of Free Product (feet):
Referenced to: <u>PVD</u> Grade	D.O. Meter (if req'd): YSI HACH
DTW with 80% Recharge [(Height of Water Column x 0.20) + DTW]: 14.11	

Purge Method: Bailer <input checked="" type="checkbox"/> Disposable Bailer Positive Air Displacement Electric Submersible	Waterra Peristaltic Extraction Pump Other _____	Sampling Method: Bailer <input checked="" type="checkbox"/> Disposable Bailer Extraction Port Dedicated Tubing Other: _____
--	--	---

$1.6 \text{ (Gals.)} \times 3 = 4.8 \text{ Gals.}$ 1 Case Volume Specified Volumes Calculated Volume	<table style="width: 100%; border-collapse: collapse;"> <thead> <tr> <th style="text-align: left;">Well Diameter</th> <th style="text-align: left;">Multiplier</th> <th style="text-align: left;">Well Diameter</th> <th style="text-align: left;">Multiplier</th> </tr> </thead> <tbody> <tr> <td>1"</td> <td>0.04</td> <td>4"</td> <td>0.65</td> </tr> <tr> <td>2"</td> <td>0.16</td> <td>6"</td> <td>1.47</td> </tr> <tr> <td>3"</td> <td>0.37</td> <td>Other</td> <td>radius² * 0.163</td> </tr> </tbody> </table>	Well Diameter	Multiplier	Well Diameter	Multiplier	1"	0.04	4"	0.65	2"	0.16	6"	1.47	3"	0.37	Other	radius ² * 0.163
Well Diameter	Multiplier	Well Diameter	Multiplier														
1"	0.04	4"	0.65														
2"	0.16	6"	1.47														
3"	0.37	Other	radius ² * 0.163														

Time	Temp (°F or °C)	pH	Cond. (mS or μ S)	Turbidity (NTUs)	Gals. Removed	Observations
1225	16.5	7.3	86828	>1000	1.6	odor, cloudy, gray
1227	15.4	7.0	883	>1000	3.2	dark gray, odor, cloudy
1230	15.1	7.0	888	>1000	4.8	cc 4

Did well dewater? Yes <input type="checkbox"/> No <input checked="" type="checkbox"/>	Gallons actually evacuated: 4.8	
Sampling Date: 6/20/07	Sampling Time: 12:35	Depth to Water: 13.46
Sample I.D.: MW-8	Laboratory: Kiff CalScience	Other: <u>CIT</u>
Analyzed for: TPH-G BTEX MTBE TPH-D Oxygenates (5)	Other: See GC	
EB I.D. (if applicable): @ Time	Duplicate I.D. (if applicable):	
Analyzed for: TPH-G BTEX MTBE TPH-D Oxygenates (5)	Other:	
D.O. (if req'd): Pre-purge:	mg/L	Post-purge: mg/L
O.R.P. (if req'd): Pre-purge:	mV	Post-purge: mV

WELL MONITORING DATA SHEET

Project #: <u>070620-DRI</u>	Client: <u>Skinner Env.</u>
Sampler: <u>DR</u>	Date: <u>6/20/07</u>
Well I.D.: <u>MW-9</u>	Well Diameter: <u>2</u> 3 4 6 8 _____
Total Well Depth (TD): <u>30.31</u>	Depth to Water (DTW): <u>18.22</u>
Depth to Free Product:	Thickness of Free Product (feet):
Referenced to: <u>PVD</u> Grade	D.O. Meter (if req'd): YSI HACH
DTW with 80% Recharge [(Height of Water Column x 0.20) + DTW]: <u>20.64</u>	

Purge Method: Bailer <input checked="" type="checkbox"/> Disposable Bailer Positive Air Displacement Electric Submersible	Waterra Peristaltic Extraction Pump Other _____	Sampling Method: Bailer <input checked="" type="checkbox"/> Disposable Bailer Extraction Port Dedicated Tubing Other: _____
--	--	---

$\underline{1.9} \text{ (Gals.)} \times \underline{3} = \underline{5.7} \text{ Gals.}$ I Case Volume Specified Volumes Calculated Volume	<table border="1" style="width: 100%; border-collapse: collapse;"> <thead> <tr> <th>Well Diameter</th> <th>Multiplier</th> <th>Well Diameter</th> <th>Multiplier</th> </tr> </thead> <tbody> <tr> <td>1"</td> <td>0.04</td> <td>4"</td> <td>0.65</td> </tr> <tr> <td>2"</td> <td>0.16</td> <td>6"</td> <td>1.47</td> </tr> <tr> <td>3"</td> <td>0.37</td> <td>Other</td> <td>radius² * 0.163</td> </tr> </tbody> </table>	Well Diameter	Multiplier	Well Diameter	Multiplier	1"	0.04	4"	0.65	2"	0.16	6"	1.47	3"	0.37	Other	radius ² * 0.163
Well Diameter	Multiplier	Well Diameter	Multiplier														
1"	0.04	4"	0.65														
2"	0.16	6"	1.47														
3"	0.37	Other	radius ² * 0.163														

Time	Temp (°F or °C)	pH	Cond. (mS or µS)	Turbidity (NTUs)	Gals. Removed	Observations
<u>1201</u>	<u>16.1</u>	<u>6.9</u>	<u>888</u>	<u>559</u>	<u>1.9</u>	<u>gray, cloudy</u>
<u>1205</u>	<u>14.9</u>	<u>7.1</u>	<u>859</u>	<u>>1000</u>	<u>3.8</u>	<u>" "</u>
<u>1210</u>	<u>15.8</u>	<u>7.2</u>	<u>834</u>	<u>>1000</u>	<u>5.7</u>	<u>" "</u>

Did well dewater? Yes <input type="checkbox"/> No <input checked="" type="checkbox"/>	Gallons actually evacuated: <u>5.7</u>	
Sampling Date: <u>6/20/07</u>	Sampling Time: <u>12:15</u>	Depth to Water: <u>19.19</u>
Sample I.D.: <u>MW-9</u>	Laboratory: Kiff CalScience Other <u>(CIT)</u>	
Analyzed for: TPH-G BTEX MTBE TPH-D Oxygenates (5) Other: <u>See GC</u>		
EB I.D. (if applicable): @ _____ Time	Duplicate I.D. (if applicable):	
Analyzed for: TPH-G BTEX MTBE TPH-D Oxygenates (5) Other:		
D.O. (if req'd): Pre-purge: _____ mg/L	Post-purge: _____ mg/L	
O.R.P. (if req'd): Pre-purge: _____ mV	Post-purge: _____ mV	

WELL MONITORING DATA SHEET

Project #: <u>670620-DRI</u>	Client: <u>Skeller Env.</u>
Sampler: <u>DR</u>	Date: <u>6/20/07</u>
Well I.D.: <u>MW-10</u>	Well Diameter: <u>3</u> 3 4 6 8 _____
Total Well Depth (TD): <u>28.36</u>	Depth to Water (DTW): <u>12.02</u>
Depth to Free Product:	Thickness of Free Product (feet):
Referenced to: <u>PVD</u> Grade	D.O. Meter (if req'd): YSI HACH
DTW with 80% Recharge [(Height of Water Column x 0.20) + DTW]: <u>15.29</u>	

Purge Method: Bailer <input checked="" type="checkbox"/> Disposable Bailer Positive Air Displacement Electric Submersible	Waterra Peristaltic Extraction Pump Other _____	Sampling Method: Bailer <input checked="" type="checkbox"/> Disposable Bailer Extraction Port Dedicated Tubing Other: _____
--	--	---

<u>2.6</u> (Gals.) X	<u>3</u>	= <u>7.8</u> Gals.
I Case Volume	Specified Volumes	Calculated Volume

Well Diameter	Multiplier	Well Diameter	Multiplier
1"	0.04	4"	0.65
2"	0.16	6"	1.47
3"	0.37	Other	radius ² * 0.163

Time	Temp (°F or °C)	pH	Cond. (mS or µS)	Turbidity (NTUs)	Gals. Removed	Observations
1043	14.4	7.7	771	155	2.6	odor, clear
1047	14.0	7.6	815	248	5.2	odor, clear
1051	14.1	7.6	740	292	7.8	"
						DTW = 20.65

Did well dewater? Yes No Gallons actually evacuated: 7.8

Sampling Date: 6/20/07 Sampling Time: 10:55^{MW} Depth to Water: 15.25

Sample I.D.: MW-10 Laboratory: 1120 Kiff CalScience Other (CPI)

Analyzed for: TPH-G BTEX MTBE TPH-D Oxygenates (5) Other: See GC

EB I.D. (if applicable): @ Time Duplicate I.D. (if applicable):

Analyzed for: TPH-G BTEX MTBE TPH-D Oxygenates (5) Other:

D.O. (if req'd):	Pre-purge:	mg/L	Post-purge:	mg/L
------------------	------------	------	-------------	------

O.R.P. (if req'd):	Pre-purge:	mV	Post-purge:	mV
--------------------	------------	----	-------------	----

WELL MONITORING DATA SHEET

Project #: 070620-DR1	Client: Sklar Env.
Sampler: DR	Date: 6/20/07
Well I.D.: MW-11	Well Diameter: <u>2</u> 3 4 6 8
Total Well Depth (TD): 28.86	Depth to Water (DTW): 12.47
Depth to Free Product:	Thickness of Free Product (feet):
Referenced to: <u>PTD</u> Grade	D.O. Meter (if req'd): YSI HACH
DTW with 80% Recharge [(Height of Water Column x 0.20) + DTW]: 15.75	

Purge Method: Bailer <input checked="" type="checkbox"/> Disposable Bailer Positive Air Displacement Electric Submersible	Waterra Peristaltic Extraction Pump Other _____	Sampling Method: Bailer <input checked="" type="checkbox"/> Disposable Bailer Extraction Port Dedicated Tubing Other: _____
--	--	---

$2.6 \text{ (Gals.)} \times 3 = 7.8 \text{ Gals.}$ I Case Volume Specified Volumes Calculated Volume	<table border="1" style="width: 100%; border-collapse: collapse; font-size: small;"> <thead> <tr> <th>Well Diameter</th> <th>Multiplier</th> <th>Well Diameter</th> <th>Multiplier</th> </tr> </thead> <tbody> <tr> <td>1"</td> <td>0.04</td> <td>4"</td> <td>0.65</td> </tr> <tr> <td>2"</td> <td>0.16</td> <td>6"</td> <td>1.47</td> </tr> <tr> <td>3"</td> <td>0.37</td> <td>Other</td> <td>radius² + 0.163</td> </tr> </tbody> </table>	Well Diameter	Multiplier	Well Diameter	Multiplier	1"	0.04	4"	0.65	2"	0.16	6"	1.47	3"	0.37	Other	radius ² + 0.163
Well Diameter	Multiplier	Well Diameter	Multiplier														
1"	0.04	4"	0.65														
2"	0.16	6"	1.47														
3"	0.37	Other	radius ² + 0.163														

Time	Temp (°F or °C)	pH	Cond. (mS or µS)	Turbidity (NTUs)	Gals. Removed	Observations
12:46	15.5	7.2	759	>1000	2.6	cloudy, gray
12:48	14.7	7.1	764	>1000	5.2	" "
12:51	14.8	7.0	770	>1000	7.8	" "

Did well dewater? Yes No Gallons actually evacuated: 7.8

Sampling Date: 6/20/07 Sampling Time: 12:58 Depth to Water: 13.33

Sample I.D.: MW-11 Laboratory: Kiff CalScience Other: CAF

Analyzed for: TPH-G BTEX MTBE TPH-D Oxygenates (5) Other: Sec 60

EB I.D. (if applicable): @ Time Duplicate I.D. (if applicable):

Analyzed for: TPH-G BTEX MTBE TPH-D Oxygenates (5) Other:

D.O. (if req'd):	Pre-purge:	mg/L	Post-purge:	mg/L
------------------	------------	------	-------------	------

O.R.P. (if req'd):	Pre-purge:	mV	Post-purge:	mV
--------------------	------------	----	-------------	----

WELL MONITORING DATA SHEET

Project #: <u>070620-DR1</u>	Client: <u>Skler Env.</u>
Sampler: <u>DR</u>	Date: <u>6/20/07</u>
Well I.D.: <u>MW-12</u>	Well Diameter: <u>2.2</u> 3 4 6 8 _____
Total Well Depth (TD): <u>23.81</u>	Depth to Water (DTW): <u>9.81</u>
Depth to Free Product:	Thickness of Free Product (feet):
Referenced to: <u>PVD</u> Grade	D.O. Meter (if req'd): YSI HACH
DTW with 80% Recharge [(Height of Water Column x 0.20) + DTW]: <u>12.61</u>	

Purge Method: Bailer <input checked="" type="checkbox"/> Disposable Bailer Positive Air Displacement Electric Submersible	Waterra Peristaltic Extraction Pump Other _____	Sampling Method: Bailer <input checked="" type="checkbox"/> Disposable Bailer Extraction Port Dedicated Tubing Other: _____
--	--	---

$2.2 \text{ (Gals.)} \times 3 = 6.6 \text{ Gals.}$ I Case Volume Specified Volumes Calculated Volume	<table border="1" style="width: 100%; border-collapse: collapse; font-size: small;"> <thead> <tr> <th>Well Diameter</th> <th>Multiplier</th> <th>Well Diameter</th> <th>Multiplier</th> </tr> </thead> <tbody> <tr> <td>1"</td> <td>0.04</td> <td>4"</td> <td>0.65</td> </tr> <tr> <td>2"</td> <td>0.16</td> <td>6"</td> <td>1.47</td> </tr> <tr> <td>3"</td> <td>0.37</td> <td>Other</td> <td>radius² * 0.163</td> </tr> </tbody> </table>	Well Diameter	Multiplier	Well Diameter	Multiplier	1"	0.04	4"	0.65	2"	0.16	6"	1.47	3"	0.37	Other	radius ² * 0.163
Well Diameter	Multiplier	Well Diameter	Multiplier														
1"	0.04	4"	0.65														
2"	0.16	6"	1.47														
3"	0.37	Other	radius ² * 0.163														

Time	Temp (°F or °C)	pH	Cond. (mS or µS)	Turbidity (NTUs)	Gals. Removed	Observations
11:30	15.0	6.9	711	>1000	2.2	Green
11:35	15.7	7.1	696	>1000	4.4	" "
11:40	15.8	6.9	684	>1000	6.6	" "
					DTW 14.16	

Did well dewater? Yes No Gallons actually evacuated: 6.6

Sampling Date: 6/20/07 Sampling Time: 12:00 Depth to Water: 12.53

Sample I.D.: MW-12 Laboratory: Kiff CalScience Other: (CIT)

Analyzed for: TPH-G BTEX MTBE TPH-D Oxygenates (5) Other: See GC

EB I.D. (if applicable): @ _____ Time Duplicate I.D. (if applicable):

Analyzed for: TPH-G BTEX MTBE TPH-D Oxygenates (5) Other:

D.O. (if req'd):	Pre-purge:	mg/L	Post-purge:	mg/L
O.R.P. (if req'd):	Pre-purge:	mV	Post-purge:	mV

APPENDIX C

Analytical Laboratory Report and Chain-of-Custody Record

Chain of Custody Record

195515

Lab job no. _____
 Date 6/20/07
 Page 1 of 1

Laboratory Curtis and Tompkins, Ltd. Method of Shipment Hand Delivery
 Address 2323 Fifth Street Shipment No. _____
Berkeley, California 94710 Airbill No. _____
510-486-0900 Cooler No. _____
 Project Owner East Bay Regional Park District Project Manager ~~Bruce Tucker~~ R. MARDISI
 Site Address 7867 Redwood Road Telephone No. (510) 644-3123
Oakland, California Fax No. (510) 644-3859
 Project Name Redwood Regional Park Samplers: (Signature) _____
 Project Number 2006-16

Field Sample Number	Location/Depth	Date	Time	Sample Type	Type/Size of Container	Preservation		Filtered	No. of Containers	Analysis Required					Remarks
						Cooler	Chemical								
SW-2	Creek	6/20/07	0930	W	1L + 3 vials	Y	HCL in vials	N	4	X	X	X			
SW-3	↓		0945	W		Y		N	4	X	X	X			
MW-2	Pitrock Area		1135	W		Y		N	4	X	X	X			
MW-7			1108	W		Y		N	4	X	X	X			
MW-10			1120	W		Y		N	4	X	X	X			
MW-12			1200	W		Y		N	4	X	X	X			
MW-9			1215	W		Y		N	4	X	X	X			
MW-8			1235	W		Y		N	4	X	X	X			
MW-11			1258	W		Y		N	4	X	X	X			

-1
 -2
 -3
 -4
 -5
 -6
 -7
 -8
 -9
 -10

IVH-6
 BTCC MTR E (B015)
 TEH-D (B021)

Relinquished by: Signature: <u>[Signature]</u> Printed: <u>Devin Rogers</u> Company: <u>Blaine Tech Services</u>	Date: <u>6/20/07</u> Time: _____	Received by: Signature: <u>[Signature]</u> Printed: <u>Lisa Brooker</u> Company: <u>Curtis + Tompkins</u>	Date: <u>6/20/07</u> Time: <u>1350</u>	Relinquished by: Signature: _____ Printed: _____ Company: _____	Date: _____ Time: _____	Received by: Signature: _____ Printed: _____ Company: _____	Date: _____ Time: _____				
Turnaround Time: <u>5 Day TAT</u>				Relinquished by: Signature: _____ Printed: _____ Company: _____				Date: _____ Time: _____			
Comments: <u>Please provide a GeoTracker EDD as well as hard copy of report.</u> <u>Surface water samples collected by Stellar Environmental Solutions.</u> <u>Groundwater samples collected by Blaine Tech Services.</u>								Relinquished by: Signature: _____ Printed: _____ Company: _____		Date: _____ Time: _____	

2000-00-01

Samples on ice/intact.

Curtis & Tompkins Laboratories Analytical Report

Lab #: 195515	Location: Redwood Regional Park
Client: Stellar Environmental Solutions	Prep: EPA 5030B
Project#: 2006-16	
Matrix: Water	Sampled: 06/20/07
Units: ug/L	Received: 06/20/07
Batch#: 126534	

Field ID: SW-2 Diln Fac: 1.000
 Type: SAMPLE Analyzed: 06/21/07
 Lab ID: 195515-001

Analyte	Result	RL	Analysis
Gasoline C7-C12	ND	50	EPA 8015B
MTBE	ND	2.0	EPA 8021B
Benzene	ND	0.50	EPA 8021B
Toluene	ND	0.50	EPA 8021B
Ethylbenzene	ND	0.50	EPA 8021B
m,p-Xylenes	ND	0.50	EPA 8021B
o-Xylene	ND	0.50	EPA 8021B

Surrogate	%REC	Limits	Analysis
Trifluorotoluene (FID)	99	72-136	EPA 8015B
Bromofluorobenzene (FID)	99	78-131	EPA 8015B
Trifluorotoluene (PID)	95	63-140	EPA 8021B
Bromofluorobenzene (PID)	98	78-121	EPA 8021B

Field ID: SW-3 Diln Fac: 1.000
 Type: SAMPLE Analyzed: 06/21/07
 Lab ID: 195515-002

Analyte	Result	RL	Analysis
Gasoline C7-C12	ND	50	EPA 8015B
MTBE	ND	2.0	EPA 8021B
Benzene	ND	0.50	EPA 8021B
Toluene	ND	0.50	EPA 8021B
Ethylbenzene	ND	0.50	EPA 8021B
m,p-Xylenes	ND	0.50	EPA 8021B
o-Xylene	ND	0.50	EPA 8021B

Surrogate	%REC	Limits	Analysis
Trifluorotoluene (FID)	111	72-136	EPA 8015B
Bromofluorobenzene (FID)	119	78-131	EPA 8015B
Trifluorotoluene (PID)	104	63-140	EPA 8021B
Bromofluorobenzene (PID)	112	78-121	EPA 8021B

C= Presence confirmed, but RPD between columns exceeds 40%
 H= Heavier hydrocarbons contributed to the quantitation
 L= Lighter hydrocarbons contributed to the quantitation
 ND= Not Detected
 RL= Reporting Limit

Curtis & Tompkins Laboratories Analytical Report

Lab #: 195515	Location: Redwood Regional Park
Client: Stellar Environmental Solutions	Prep: EPA 5030B
Project#: 2006-16	
Matrix: Water	Sampled: 06/20/07
Units: ug/L	Received: 06/20/07
Batch#: 126534	

Field ID: MW-2 Diln Fac: 1.000
 Type: SAMPLE Analyzed: 06/22/07
 Lab ID: 195515-003

Analyte	Result	RL	Analysis
Gasoline C7-C12	ND	50	EPA 8015B
MTBE	8.0	2.0	EPA 8021B
Benzene	3.5	0.50	EPA 8021B
Toluene	ND	0.50	EPA 8021B
Ethylbenzene	ND	0.50	EPA 8021B
m,p-Xylenes	ND	0.50	EPA 8021B
o-Xylene	ND	0.50	EPA 8021B

Surrogate	%REC	Limits	Analysis
Trifluorotoluene (FID)	110	72-136	EPA 8015B
Bromofluorobenzene (FID)	115	78-131	EPA 8015B
Trifluorotoluene (PID)	103	63-140	EPA 8021B
Bromofluorobenzene (PID)	110	78-121	EPA 8021B

Field ID: MW-7 Diln Fac: 2.000
 Type: SAMPLE Analyzed: 06/21/07
 Lab ID: 195515-004

Analyte	Result	RL	Analysis
Gasoline C7-C12	6,800 H	100	EPA 8015B
MTBE	ND	4.0	EPA 8021B
Benzene	30	1.0	EPA 8021B
Toluene	ND	1.0	EPA 8021B
Ethylbenzene	160	1.0	EPA 8021B
m,p-Xylenes	26	1.0	EPA 8021B
o-Xylene	1.4 C	1.0	EPA 8021B

Surrogate	%REC	Limits	Analysis
Trifluorotoluene (FID)	130	72-136	EPA 8015B
Bromofluorobenzene (FID)	108	78-131	EPA 8015B
Trifluorotoluene (PID)	105	63-140	EPA 8021B
Bromofluorobenzene (PID)	106	78-121	EPA 8021B

C= Presence confirmed, but RPD between columns exceeds 40%
 H= Heavier hydrocarbons contributed to the quantitation
 L= Lighter hydrocarbons contributed to the quantitation
 ND= Not Detected
 RL= Reporting Limit

Curtis & Tompkins Laboratories Analytical Report

Lab #: 195515	Location: Redwood Regional Park
Client: Stellar Environmental Solutions	Prep: EPA 5030B
Project#: 2006-16	
Matrix: Water	Sampled: 06/20/07
Units: ug/L	Received: 06/20/07
Batch#: 126534	

Field ID: MW-10 Diln Fac: 1.000
 Type: SAMPLE Analyzed: 06/22/07
 Lab ID: 195515-005

Analyte	Result	RL	Analysis
Gasoline C7-C12	60	50	EPA 8015B
MTBE	4.0	2.0	EPA 8021B
Benzene	2.4	0.50	EPA 8021B
Toluene	ND	0.50	EPA 8021B
Ethylbenzene	1.6	0.50	EPA 8021B
m,p-Xylenes	ND	0.50	EPA 8021B
o-Xylene	ND	0.50	EPA 8021B

Surrogate	%REC	Limits	Analysis
Trifluorotoluene (FID)	119	72-136	EPA 8015B
Bromofluorobenzene (FID)	123	78-131	EPA 8015B
Trifluorotoluene (PID)	108	63-140	EPA 8021B
Bromofluorobenzene (PID)	117	78-121	EPA 8021B

Field ID: MW-12 Diln Fac: 1.000
 Type: SAMPLE Analyzed: 06/22/07
 Lab ID: 195515-006

Analyte	Result	RL	Analysis
Gasoline C7-C12	590 H	50	EPA 8015B
MTBE	ND	2.0	EPA 8021B
Benzene	ND	0.50	EPA 8021B
Toluene	ND	0.50	EPA 8021B
Ethylbenzene	4.5	0.50	EPA 8021B
m,p-Xylenes	0.93	0.50	EPA 8021B
o-Xylene	ND	0.50	EPA 8021B

Surrogate	%REC	Limits	Analysis
Trifluorotoluene (FID)	133	72-136	EPA 8015B
Bromofluorobenzene (FID)	119	78-131	EPA 8015B
Trifluorotoluene (PID)	124	63-140	EPA 8021B
Bromofluorobenzene (PID)	110	78-121	EPA 8021B

C= Presence confirmed, but RPD between columns exceeds 40%
 H= Heavier hydrocarbons contributed to the quantitation
 L= Lighter hydrocarbons contributed to the quantitation
 ND= Not Detected
 RL= Reporting Limit

Curtis & Tompkins Laboratories Analytical Report

Lab #: 195515	Location: Redwood Regional Park
Client: Stellar Environmental Solutions	Prep: EPA 5030B
Project#: 2006-16	
Matrix: Water	Sampled: 06/20/07
Units: ug/L	Received: 06/20/07
Batch#: 126534	

Field ID: MW-9 Diln Fac: 2.000
 Type: SAMPLE Analyzed: 06/21/07
 Lab ID: 195515-007

Analyte	Result	RL	Analysis
Gasoline C7-C12	7,100 H	100	EPA 8015B
MTBE	ND	4.0	EPA 8021B
Benzene	75	1.0	EPA 8021B
Toluene	5.2	1.0	EPA 8021B
Ethylbenzene	480	1.0	EPA 8021B
m,p-Xylenes	290	1.0	EPA 8021B
o-Xylene	8.1	1.0	EPA 8021B

Surrogate	%REC	Limits	Analysis
Trifluorotoluene (FID)	108	72-136	EPA 8015B
Bromofluorobenzene (FID)	99	78-131	EPA 8015B
Trifluorotoluene (PID)	123	63-140	EPA 8021B
Bromofluorobenzene (PID)	102	78-121	EPA 8021B

Field ID: MW-8 Diln Fac: 2.000
 Type: SAMPLE Analyzed: 06/21/07
 Lab ID: 195515-008

Analyte	Result	RL	Analysis
Gasoline C7-C12	10,000 H	100	EPA 8015B
MTBE	ND	4.0	EPA 8021B
Benzene	220	1.0	EPA 8021B
Toluene	11	1.0	EPA 8021B
Ethylbenzene	670	1.0	EPA 8021B
m,p-Xylenes	640	1.0	EPA 8021B
o-Xylene	35	1.0	EPA 8021B

Surrogate	%REC	Limits	Analysis
Trifluorotoluene (FID)	134	72-136	EPA 8015B
Bromofluorobenzene (FID)	114	78-131	EPA 8015B
Trifluorotoluene (PID)	132	63-140	EPA 8021B
Bromofluorobenzene (PID)	115	78-121	EPA 8021B

C= Presence confirmed, but RPD between columns exceeds 40%
 H= Heavier hydrocarbons contributed to the quantitation
 L= Lighter hydrocarbons contributed to the quantitation
 ND= Not Detected
 RL= Reporting Limit

Curtis & Tompkins Laboratories Analytical Report

Lab #: 195515	Location: Redwood Regional Park
Client: Stellar Environmental Solutions	Prep: EPA 5030B
Project#: 2006-16	
Matrix: Water	Sampled: 06/20/07
Units: ug/L	Received: 06/20/07
Batch#: 126534	

Field ID: MW-11 Diln Fac: 1.000
 Type: SAMPLE Analyzed: 06/22/07
 Lab ID: 195515-009

Analyte	Result	RL	Analysis
Gasoline C7-C12	4,300 H L	50	EPA 8015B
MTBE	ND	2.0	EPA 8021B
Benzene	120	0.50	EPA 8021B
Toluene	ND	0.50	EPA 8021B
Ethylbenzene	140	0.50	EPA 8021B
m,p-Xylenes	6.6 C	0.50	EPA 8021B
o-Xylene	ND	0.50	EPA 8021B

Surrogate	%REC	Limits	Analysis
Trifluorotoluene (FID)	133	72-136	EPA 8015B
Bromofluorobenzene (FID)	130	78-131	EPA 8015B
Trifluorotoluene (PID)	137	63-140	EPA 8021B
Bromofluorobenzene (PID)	117	78-121	EPA 8021B

Type: BLANK Diln Fac: 1.000
 Lab ID: QC393245 Analyzed: 06/21/07

Analyte	Result	RL	Analysis
Gasoline C7-C12	ND	50	EPA 8015B
MTBE	ND	2.0	EPA 8021B
Benzene	ND	0.50	EPA 8021B
Toluene	ND	0.50	EPA 8021B
Ethylbenzene	ND	0.50	EPA 8021B
m,p-Xylenes	ND	0.50	EPA 8021B
o-Xylene	ND	0.50	EPA 8021B

Surrogate	%REC	Limits	Analysis
Trifluorotoluene (FID)	98	72-136	EPA 8015B
Bromofluorobenzene (FID)	100	78-131	EPA 8015B
Trifluorotoluene (PID)	98	63-140	EPA 8021B
Bromofluorobenzene (PID)	101	78-121	EPA 8021B

C= Presence confirmed, but RPD between columns exceeds 40%
 H= Heavier hydrocarbons contributed to the quantitation
 L= Lighter hydrocarbons contributed to the quantitation
 ND= Not Detected
 RL= Reporting Limit

Batch QC Report

Curtis & Tompkins Laboratories Analytical Report

Lab #:	195515	Location:	Redwood Regional Park
Client:	Stellar Environmental Solutions	Prep:	EPA 5030B
Project#:	2006-16	Analysis:	EPA 8021B
Type:	LCS	Diln Fac:	1.000
Lab ID:	QC393246	Batch#:	126534
Matrix:	Water	Analyzed:	06/21/07
Units:	ug/L		

Analyte	Spiked	Result	%REC	Limits
MTBE	20.00	18.49	92	73-125
Benzene	20.00	17.41	87	79-120
Toluene	20.00	17.26	86	80-120
Ethylbenzene	20.00	17.38	87	80-120
m,p-Xylenes	20.00	17.56	88	80-120
o-Xylene	20.00	17.37	87	80-120

Surrogate	%REC	Limits
Trifluorotoluene (PID)	97	63-140
Bromofluorobenzene (PID)	94	78-121

Batch QC Report

Curtis & Tompkins Laboratories Analytical Report

Lab #:	195515	Location:	Redwood Regional Park
Client:	Stellar Environmental Solutions	Prep:	EPA 5030B
Project#:	2006-16	Analysis:	EPA 8015B
Type:	LCS	Diln Fac:	1.000
Lab ID:	QC393247	Batch#:	126534
Matrix:	Water	Analyzed:	06/21/07
Units:	ug/L		

Analyte	Spiked	Result	%REC	Limits
Gasoline C7-C12	2,000	1,739	87	80-120

Surrogate	%REC	Limits
Trifluorotoluene (FID)	106	72-136
Bromofluorobenzene (FID)	101	78-131

Batch QC Report

Curtis & Tompkins Laboratories Analytical Report

Lab #:	195515	Location:	Redwood Regional Park
Client:	Stellar Environmental Solutions	Prep:	EPA 5030B
Project#:	2006-16	Analysis:	EPA 8015B
Field ID:	SW-2	Batch#:	126534
MSS Lab ID:	195515-001	Sampled:	06/20/07
Matrix:	Water	Received:	06/20/07
Units:	ug/L	Analyzed:	06/21/07
Diln Fac:	1.000		

Type: MS Lab ID: QC393248

Analyte	MSS Result	Spiked	Result	%REC	Limits
Gasoline C7-C12	16.38	2,000	1,895	94	79-120

Surrogate	%REC	Limits
Trifluorotoluene (FID)	112	72-136
Bromofluorobenzene (FID)	102	78-131

Type: MSD Lab ID: QC393249

Analyte	Spiked	Result	%REC	Limits	RPD	Lim
Gasoline C7-C12	2,000	1,893	94	79-120	0	20

Surrogate	%REC	Limits
Trifluorotoluene (FID)	112	72-136
Bromofluorobenzene (FID)	101	78-131

RPD= Relative Percent Difference

Sequence File: \\Lims\gdrive\ezchrom\Projects\GC04\Sequence\172.seq
Sample Name: 195515-004,126534,2x,tvh+mbtxe
Data File: \\Lims\gdrive\ezchrom\Projects\GC04\Data\172_006
Instrument: GC04 (Offline) Vial: N/A Operator: Tvh 2, Analyst (lims2k3\tvh2)
Method Name: \\Lims\gdrive\ezchrom\Projects\GC04\Method\vhbtxe166.met

Software Version 3.1.7
Run Date: 6/21/2007 3:56:52 PM
Analysis Date: 6/22/2007 9:57:10 AM
Sample Amount: 5 Multiplier: 5
Vial & pH or Core ID: A1.3

-----< General Method Parameters >-----

No items selected for this section

-----< A >-----

No items selected for this section

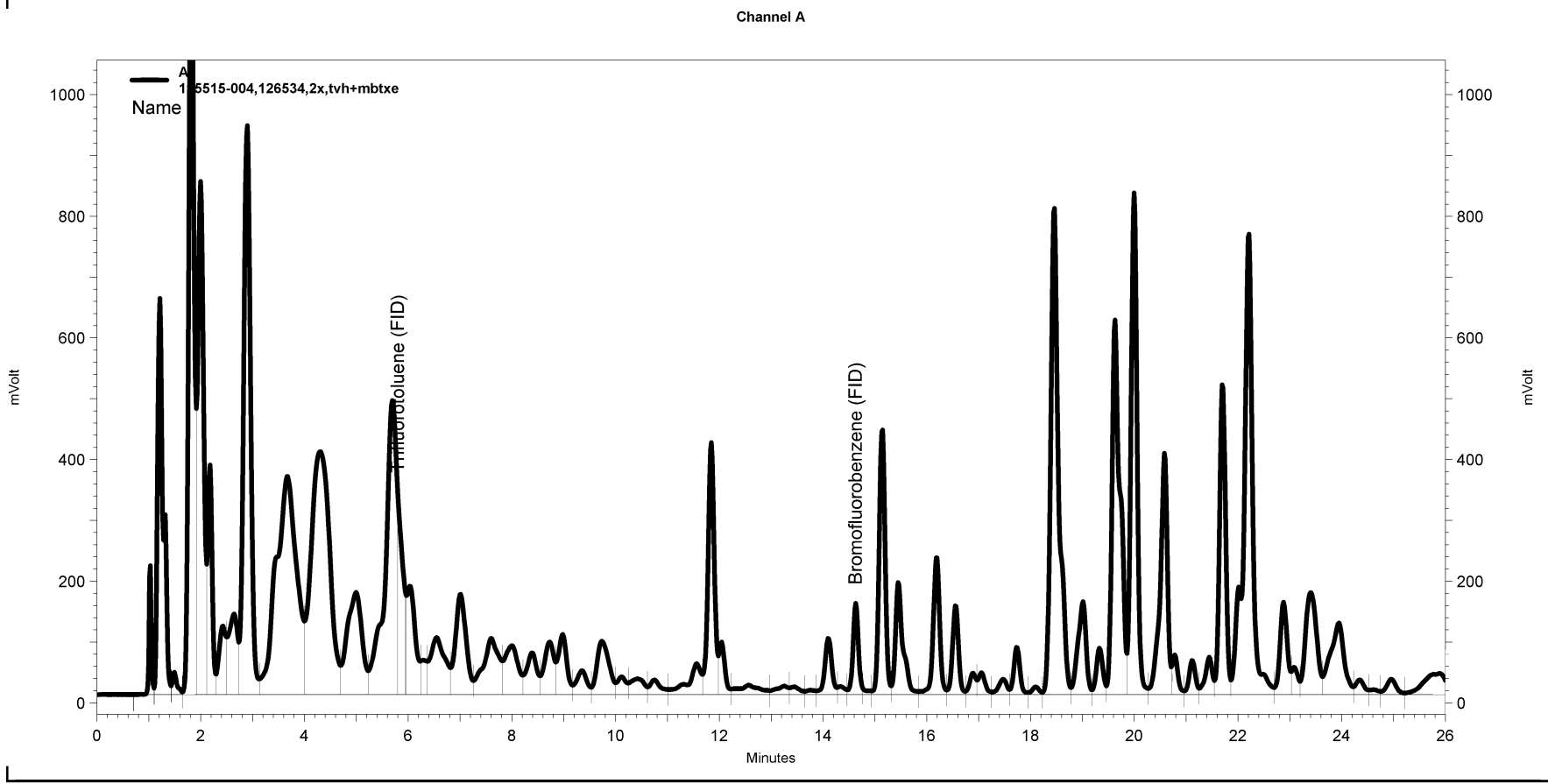
=====
Integration Events
=====

Enabled	Event Type	Start (Minutes)	Stop (Minutes)	Value
Yes	Width	0	0	0.2
Yes	Threshold	0	0	50

=====
Manual Integration Fixes
=====

Data File: \\Lims\gdrive\ezchrom\Projects\GC04\Data\172_006

Enabled	Event Type	Start (Minutes)	Stop (Minutes)	Value
Yes	Lowest Point Horizontal Baseline	0	26.017	0
Yes	Split Peak	5.797	0	0
Yes	Split Peak	5.951	0	0
Yes	Split Peak	14.771	0	0



Sequence File: \\Lims\gdrive\ezchrom\Projects\GC04\Sequence\172.seq
Sample Name: 195515-005,126534,tvh+mbtxe
Data File: \\Lims\gdrive\ezchrom\Projects\GC04\Data\172_020
Instrument: GC04 (Offline) Vial: N/A Operator: TVh 2, Analyst (lims2k3\tvh2)
Method Name: \\Lims\gdrive\ezchrom\Projects\GC04\Method\vhbtxe166.met

Software Version 3.1.7
Run Date: 6/22/2007 1:06:43 AM
Analysis Date: 6/22/2007 10:44:28 AM
Sample Amount: 5 Multiplier: 5
Vial & pH or Core ID: A1.3

-----< General Method Parameters >-----

No items selected for this section

-----< A >-----

No items selected for this section

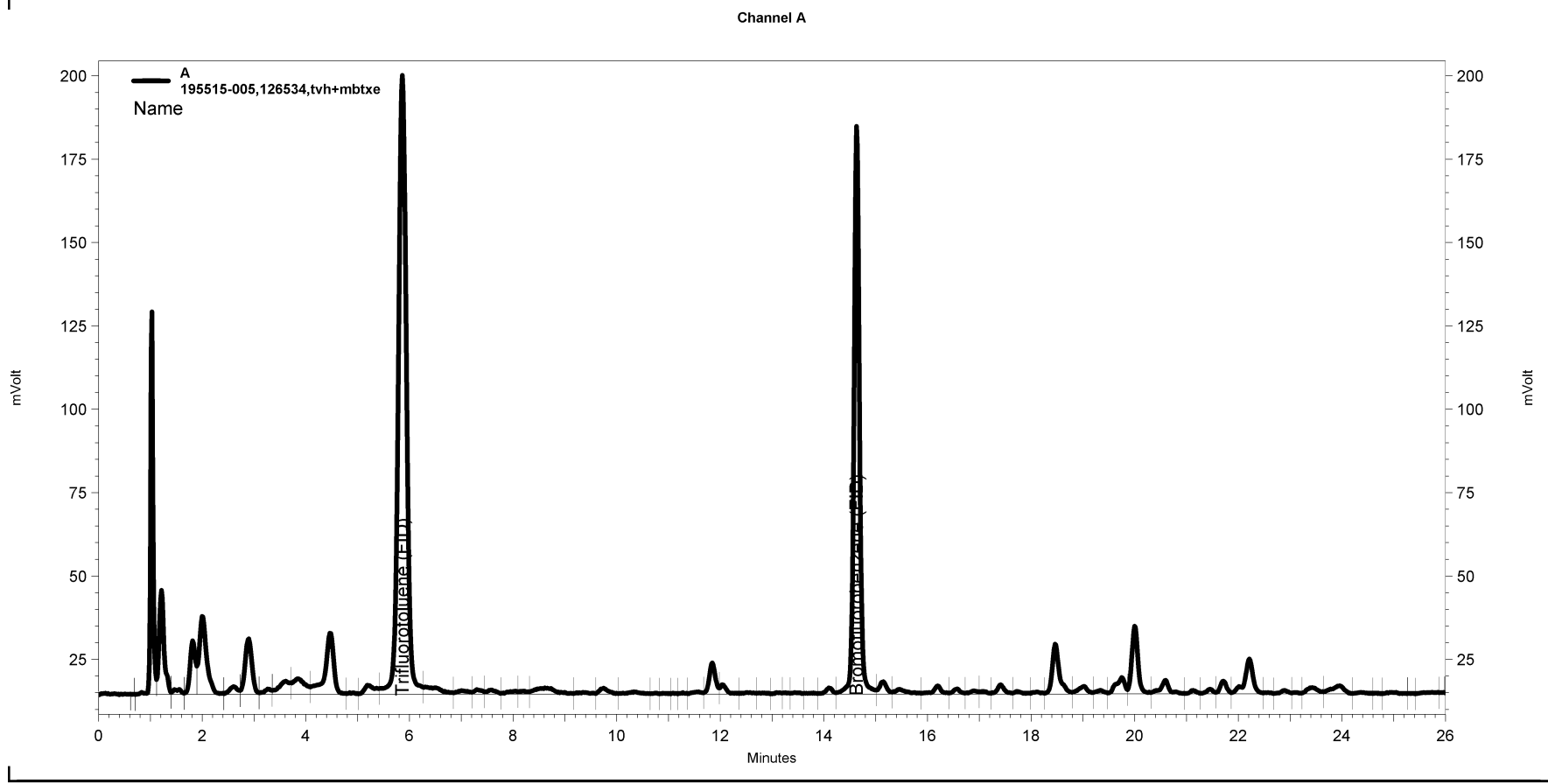
=====
Integration Events
=====

Enabled	Event Type	Start (Minutes)	Stop (Minutes)	Value
Yes	Width	0	0	0.2
Yes	Threshold	0	0	50

=====
Manual Integration Fixes
=====

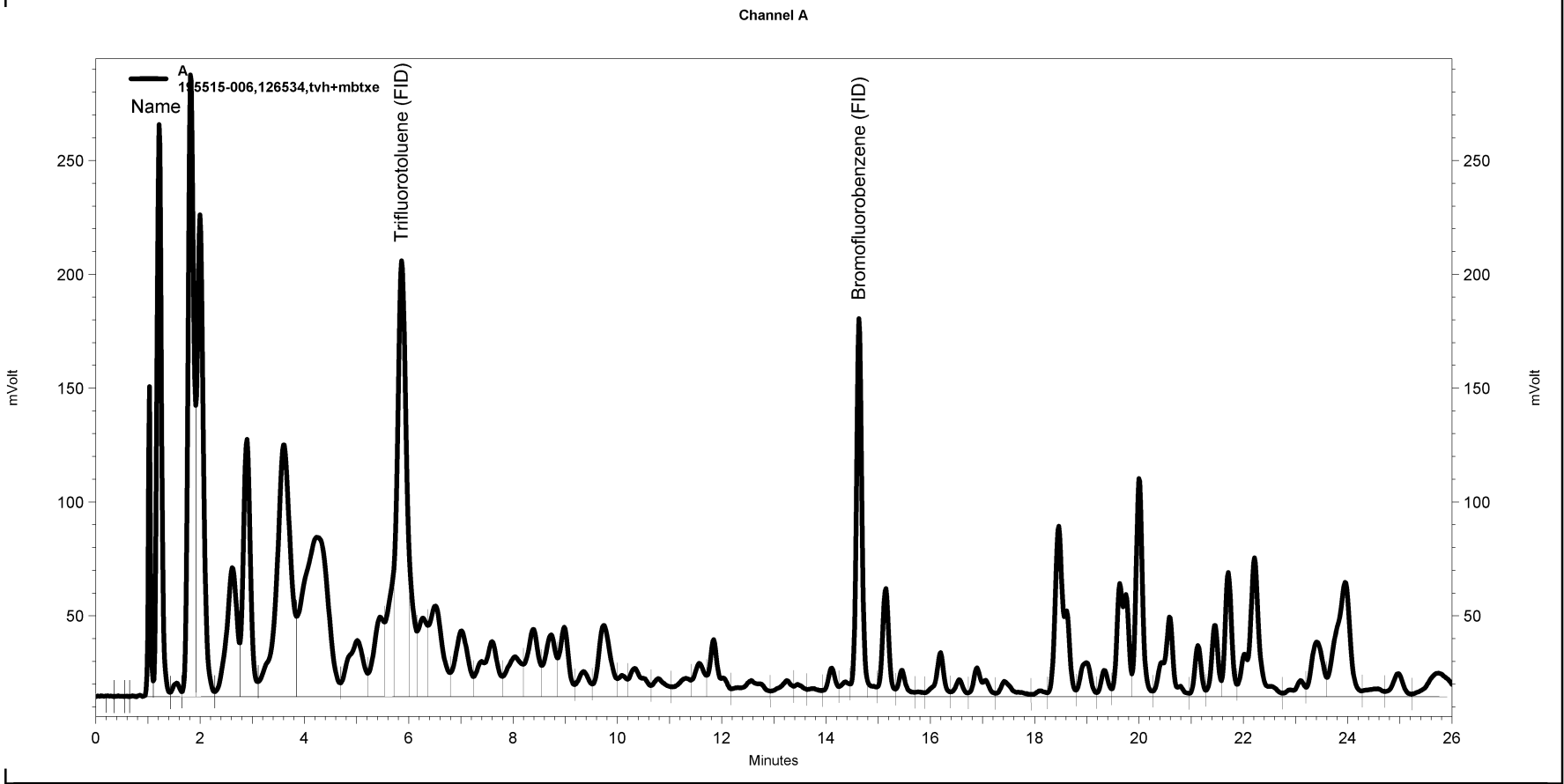
Data File: \\Lims\gdrive\ezchrom\Projects\GC04\Data\172_020

Enabled	Event Type	Start (Minutes)	Stop (Minutes)	Value
Yes	Split Peak	6.261	0	0



Sequence File: \\Lims\gdrive\ezchrom\Projects\GC04\Sequence\172.seq
Sample Name: 195515-006,126534,tvh+mbtxe
Data File: \\Lims\gdrive\ezchrom\Projects\GC04\Data\172_021
Instrument: GC04 (Offline) Vial: N/A Operator: TvH 2, Analyst (lims2k3\tvh2)
Method Name: \\Lims\gdrive\ezchrom\Projects\GC04\Method\vhbtxe166.met

Software Version 3.1.7
Run Date: 6/22/2007 1:44:39 AM
Analysis Date: 6/22/2007 10:44:32 AM
Sample Amount: 5 Multiplier: 5
Vial & pH or Core ID: A1.3



-----< General Method Parameters >-----

No items selected for this section

-----< A >-----

No items selected for this section

=====
Integration Events
=====

Enabled	Event Type	Start (Minutes)	Stop (Minutes)	Value
Yes	Width	0	0	0.2
Yes	Threshold	0	0	50

=====
Manual Integration Fixes
=====

Data File: \\Lims\gdrive\ezchrom\Projects\GC04\Data\172_021

Enabled	Event Type	Start (Minutes)	Stop (Minutes)	Value
Yes	Lowest Point Horizontal Baseline	0.135	25.914	0
Yes	Split Peak	5.712	0	0
Yes	Split Peak	6.013	0	0
Yes	Split Peak	14.802	0	0

Sequence File: \\Lims\gdrive\ezchrom\Projects\GC04\Sequence\172.seq
Sample Name: 195515-007,126534,2x,tvh+mbtxe
Data File: \\Lims\gdrive\ezchrom\Projects\GC04\Data\172_007
Instrument: GC04 (Offline) Vial: N/A Operator: Tvh 2, Analyst (lims2k3\tvh2)
Method Name: \\Lims\gdrive\ezchrom\Projects\GC04\Method\vhbtxe166.met

Software Version 3.1.7

Run Date: 6/21/2007 4:34:49 PM
Analysis Date: 6/22/2007 9:57:14 AM
Sample Amount: 5 Multiplier: 5
Vial & pH or Core ID: A1.3

-----< General Method Parameters >-----

No items selected for this section

-----< A >-----

No items selected for this section

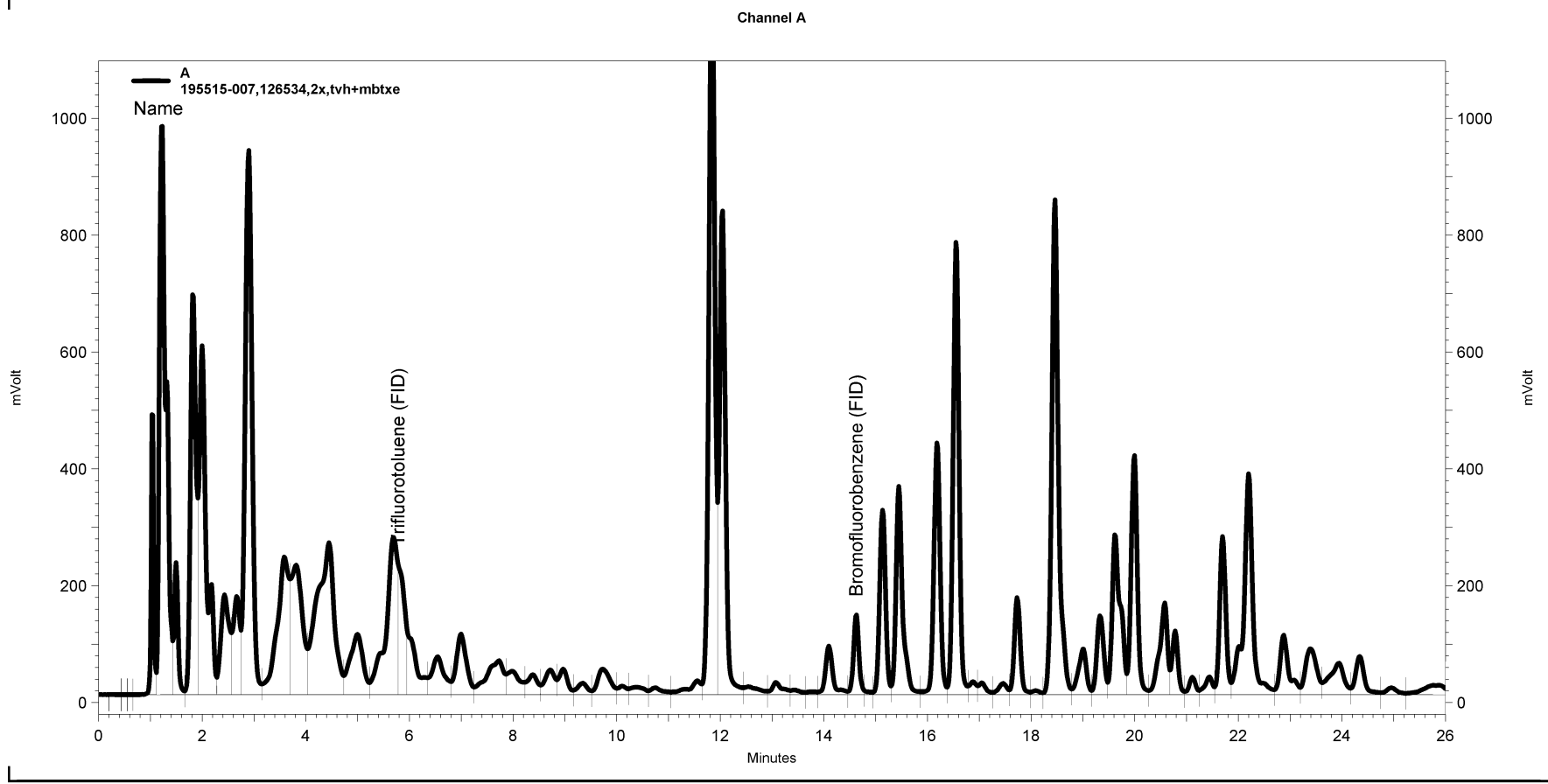
=====
Integration Events
=====

Enabled	Event Type	Start (Minutes)	Stop (Minutes)	Value
Yes	Width	0	0	0.2
Yes	Threshold	0	0	50

=====
Manual Integration Fixes
=====

Data File: \\Lims\gdrive\ezchrom\Projects\GC04\Data\172_007

Enabled	Event Type	Start (Minutes)	Stop (Minutes)	Value
Yes	Lowest Point Horizontal Baseline	0	26.017	0
Yes	Split Peak	5.788	0	0
Yes	Split Peak	5.956	0	0
Yes	Split Peak	14.789	0	0



Sequence File: \\Lims\gdrive\ezchrom\Projects\GC04\Sequence\172.seq
Sample Name: 195515-008,126534,2x,tvh+mbtxe
Data File: \\Lims\gdrive\ezchrom\Projects\GC04\Data\172_008
Instrument: GC04 (Offline) Vial: N/A Operator: Tvh 2, Analyst (lims2k3\tvh2)
Method Name: \\Lims\gdrive\ezchrom\Projects\GC04\Method\vhbtxe166.met

Software Version 3.1.7
Run Date: 6/21/2007 5:12:44 PM
Analysis Date: 6/22/2007 9:57:18 AM
Sample Amount: 5 Multiplier: 5
Vial & pH or Core ID: A1.3

-----< General Method Parameters >-----
-----< A >-----

No items selected for this section

No items selected for this section

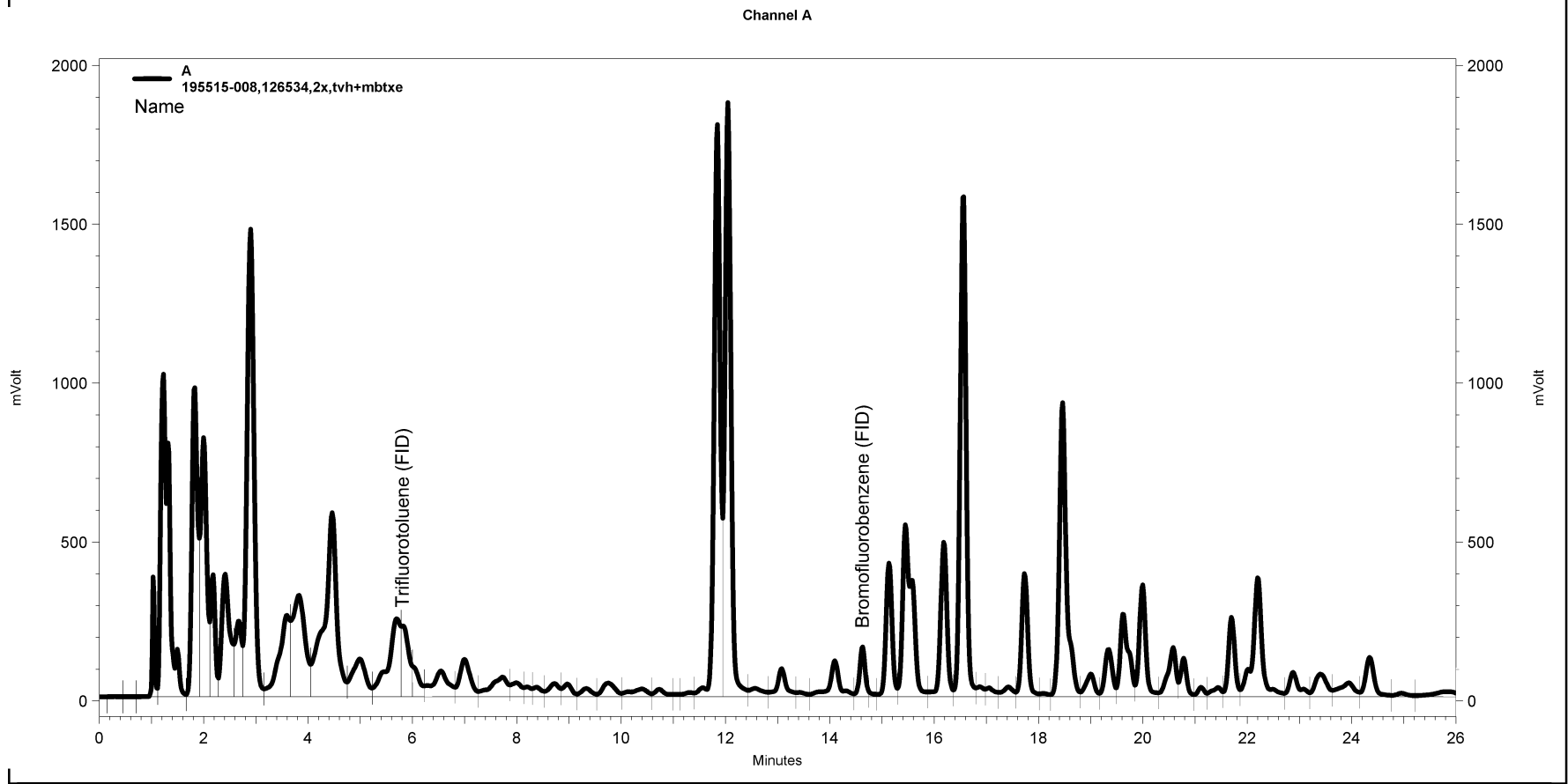
=====
Integration Events
=====

Enabled	Event Type	Start (Minutes)	Stop (Minutes)	Value
Yes	Width	0	0	0.2
Yes	Threshold	0	0	50

=====
Manual Integration Fixes
=====

Data File: \\Lims\gdrive\ezchrom\Projects\GC04\Data\172_008

Enabled	Event Type	Start (Minutes)	Stop (Minutes)	Value
Yes	Lowest Point Horizontal Baseline	0.034	26.017	0
Yes	Split Peak	5.788	0	0
Yes	Split Peak	5.998	0	0
Yes	Split Peak	14.755	0	0



Sequence File: \\Lims\gdrive\ezchrom\Projects\GC04\Sequence\172.seq
Sample Name: 195515-009,126534,tvh+mbtxe
Data File: \\Lims\gdrive\ezchrom\Projects\GC04\Data\172_022
Instrument: GC04 (Offline) Vial: N/A Operator: TvH 2, Analyst (lims2k3\tvh2)
Method Name: \\Lims\gdrive\ezchrom\Projects\GC04\Method\vhbtxe166.met

Software Version 3.1.7

Run Date: 6/22/2007 2:22:35 AM
Analysis Date: 6/22/2007 10:44:35 AM
Sample Amount: 5 Multiplier: 5
Vial & pH or Core ID: A1.3

-----< General Method Parameters ----->-----

No items selected for this section

-----< A ----->-----

No items selected for this section

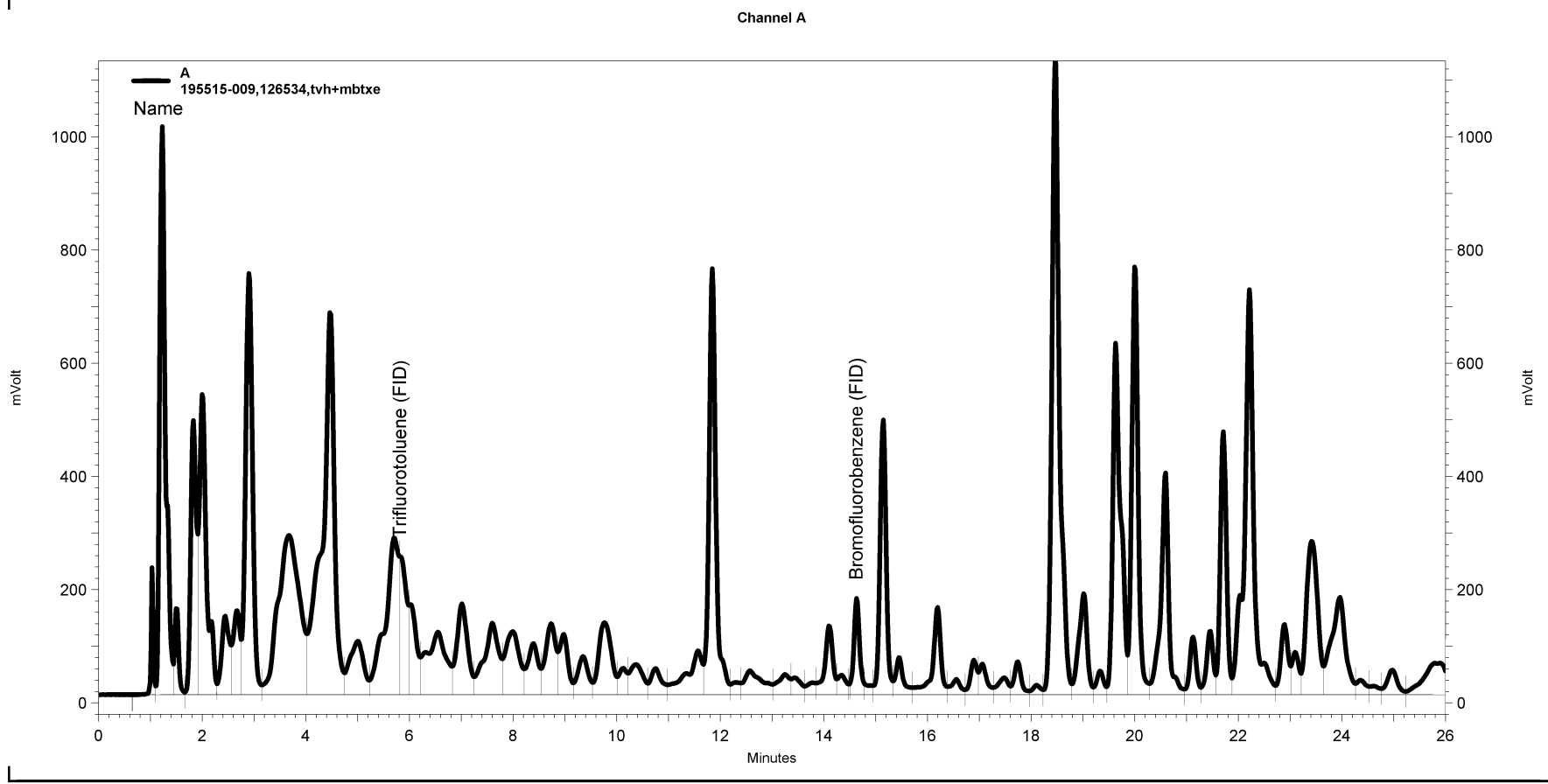
=====
Integration Events
=====

Enabled	Event Type	Start (Minutes)	Stop (Minutes)	Value
Yes	Width	0	0	0.2
Yes	Threshold	0	0	50

=====
Manual Integration Fixes
=====

Data File: \\Lims\gdrive\ezchrom\Projects\GC04\Data\172_022

Enabled	Event Type	Start (Minutes)	Stop (Minutes)	Value
Yes	Lowest Point Horizontal Baseline	0	26.017	0
Yes	Split Peak	5.81	0	0
Yes	Split Peak	5.992	0	0
Yes	Split Peak	14.512	0	0
Yes	Split Peak	14.782	0	0



Sequence File: \\Lims\gdrive\ezchrom\Projects\GC04\Sequence172.seq
Sample Name: ccv/lcs,qc393247,126534,s6393,5/5000
Data File: \\Lims\gdrive\ezchrom\Projects\GC04\Data\172_002
Instrument: GC04 (Offline) Vial: N/A Operator: Tvh 2, Analyst (lms2k3\lvh2)
Method Name: \\Lims\gdrive\ezchrom\Projects\GC04\Method\vhbtxe166.met

Software Version 3.1.7
Run Date: 6/21/2007 12:07:50 PM
Analysis Date: 6/22/2007 9:56:54 AM
Sample Amount: 5 Multiplier: 5
Vial & pH or Core ID: {Data Description}

-----< General Method Parameters >-----
-----< A >-----

No items selected for this section

No items selected for this section

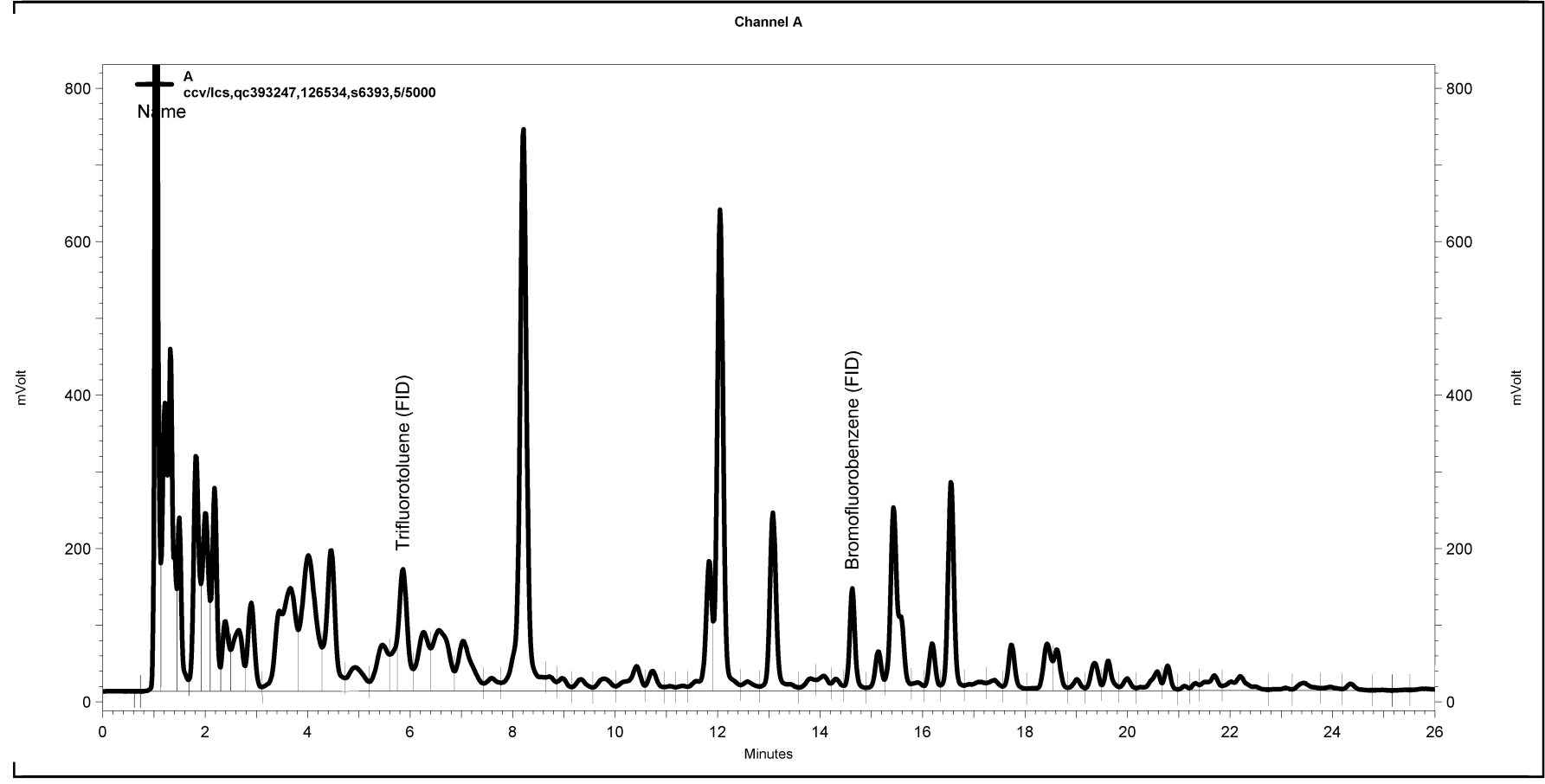
=====
Integration Events
=====

Enabled	Event Type	Start (Minutes)	Stop (Minutes)	Value
Yes	Width	0	0	0.2
Yes	Threshold	0	0	50

=====
Manual Integration Fixes
=====

Data File: \\Lims\gdrive\ezchrom\Projects\GC04\Data\172_002

Enabled	Event Type	Start (Minutes)	Stop (Minutes)	Value
Yes	Split Peak	5.748	0	0



Total Extractable Hydrocarbons

Lab #: 195515	Location: Redwood Regional Park
Client: Stellar Environmental Solutions	Prep: EPA 3520C
Project#: 2006-16	Analysis: EPA 8015B
Matrix: Water	Sampled: 06/20/07
Units: ug/L	Received: 06/20/07
Diln Fac: 1.000	Prepared: 06/22/07
Batch#: 126571	

Field ID: MW-12	Lab ID: 195515-006
Type: SAMPLE	Analyzed: 06/25/07

Analyte	Result	RL
Diesel C10-C24	280 L Y	50

Surrogate	%REC	Limits
Hexacosane	106	61-134

Field ID: MW-9	Lab ID: 195515-007
Type: SAMPLE	Analyzed: 06/25/07

Analyte	Result	RL
Diesel C10-C24	2,200 L Y	50

Surrogate	%REC	Limits
Hexacosane	103	61-134

Field ID: MW-8	Lab ID: 195515-008
Type: SAMPLE	Analyzed: 06/25/07

Analyte	Result	RL
Diesel C10-C24	3,500 L Y	50

Surrogate	%REC	Limits
Hexacosane	104	61-134

Field ID: MW-11	Lab ID: 195515-009
Type: SAMPLE	Analyzed: 06/25/07

Analyte	Result	RL
Diesel C10-C24	2,200 L Y	50

Surrogate	%REC	Limits
Hexacosane	101	61-134

Type: BLANK	Analyzed: 06/24/07
Lab ID: QC393406	

Analyte	Result	RL
Diesel C10-C24	ND	50

Surrogate	%REC	Limits
Hexacosane	83	61-134

L= Lighter hydrocarbons contributed to the quantitation
 Y= Sample exhibits chromatographic pattern which does not resemble standard
 ND= Not Detected
 RL= Reporting Limit

Batch QC Report

Total Extractable Hydrocarbons			
Lab #:	195515	Location:	Redwood Regional Park
Client:	Stellar Environmental Solutions	Prep:	EPA 3520C
Project#:	2006-16	Analysis:	EPA 8015B
Type:	LCS	Diln Fac:	1.000
Lab ID:	QC393407	Batch#:	126571
Matrix:	Water	Prepared:	06/22/07
Units:	ug/L	Analyzed:	06/24/07

Cleanup Method: EPA 3630C

Analyte	Spiked	Result	%REC	Limits
Diesel C10-C24	2,500	2,314	93	58-130

Surrogate	%REC	Limits
Hexacosane	82	61-134

Batch QC Report

Total Extractable Hydrocarbons			
Lab #:	195515	Location:	Redwood Regional Park
Client:	Stellar Environmental Solutions	Prep:	EPA 3520C
Project#:	2006-16	Analysis:	EPA 8015B
Field ID:	ZZZZZZZZZZ	Batch#:	126571
MSS Lab ID:	195476-001	Sampled:	06/18/07
Matrix:	Water	Received:	06/18/07
Units:	ug/L	Prepared:	06/22/07
Diln Fac:	1.000	Analyzed:	06/25/07

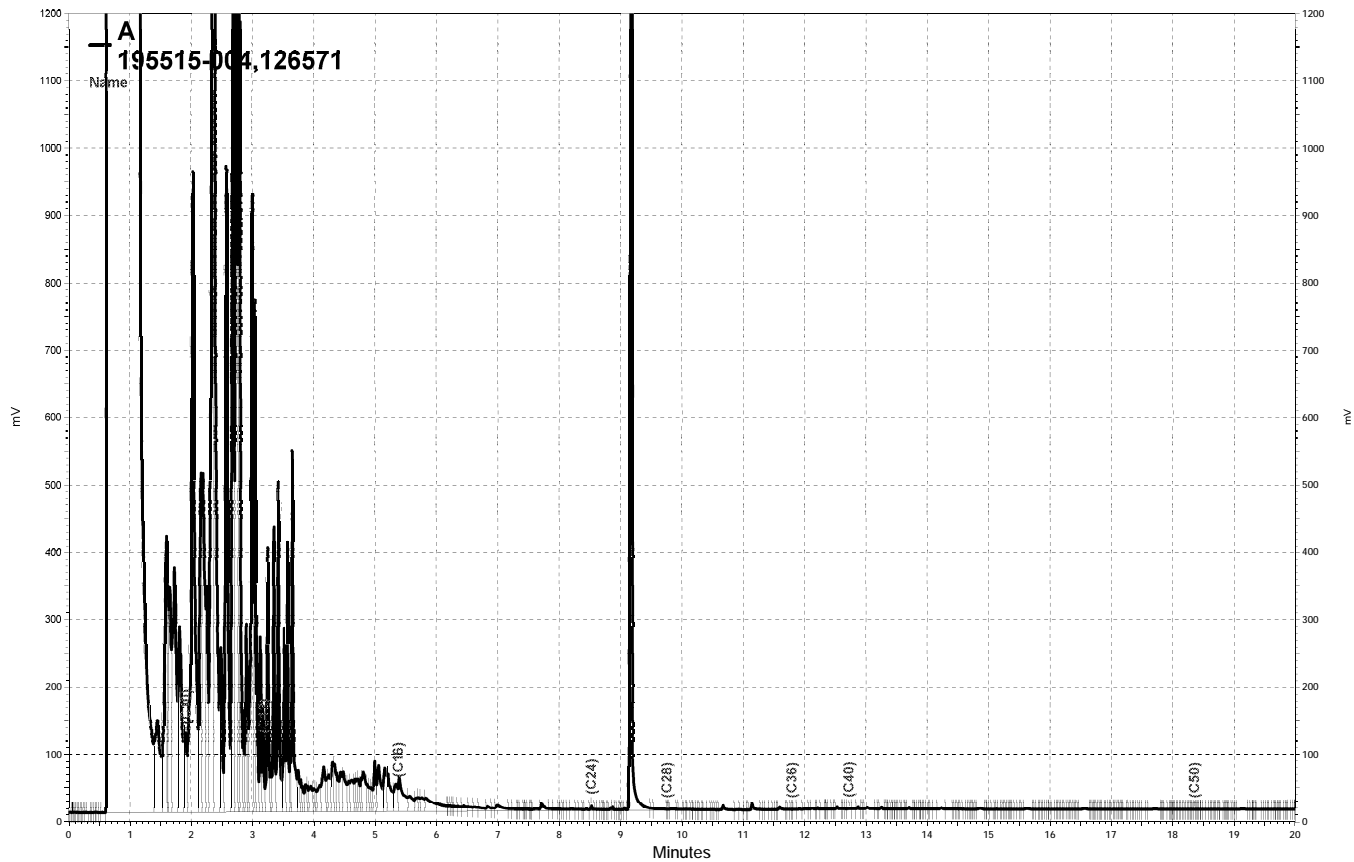
Type: MS Lab ID: QC393408

Analyte	MSS Result	Spiked	Result	%REC	Limits
Diesel C10-C24	75.75	2,500	2,695	105	57-134
Surrogate	%REC	Limits			
Hexacosane	107	61-134			

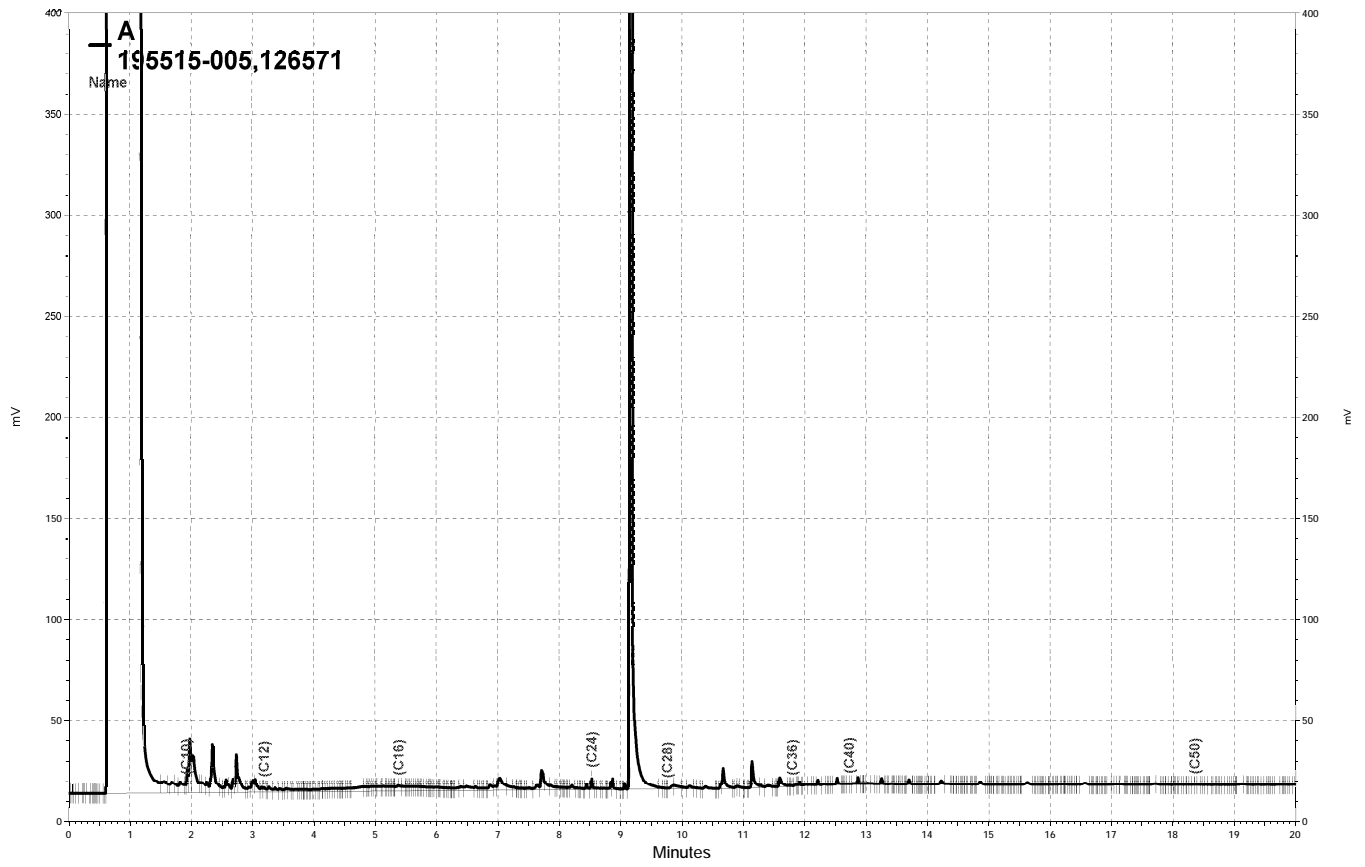
Type: MSD Lab ID: QC393409

Analyte	Spiked	Result	%REC	Limits	RPD	Lim
Diesel C10-C24	2,500	2,581	100	57-134	4	32
Surrogate	%REC	Limits				
Hexacosane	101	61-134				

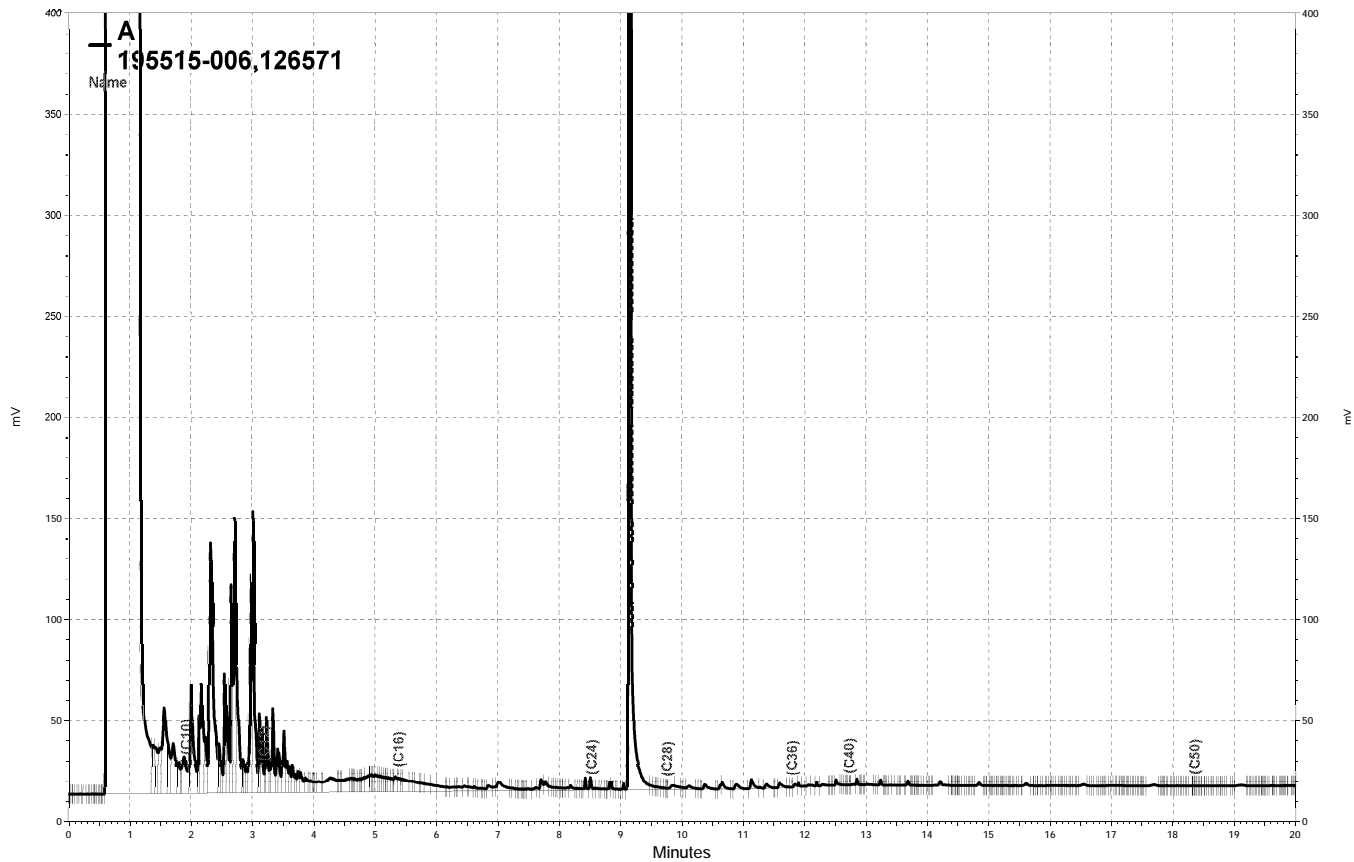
RPD= Relative Percent Difference



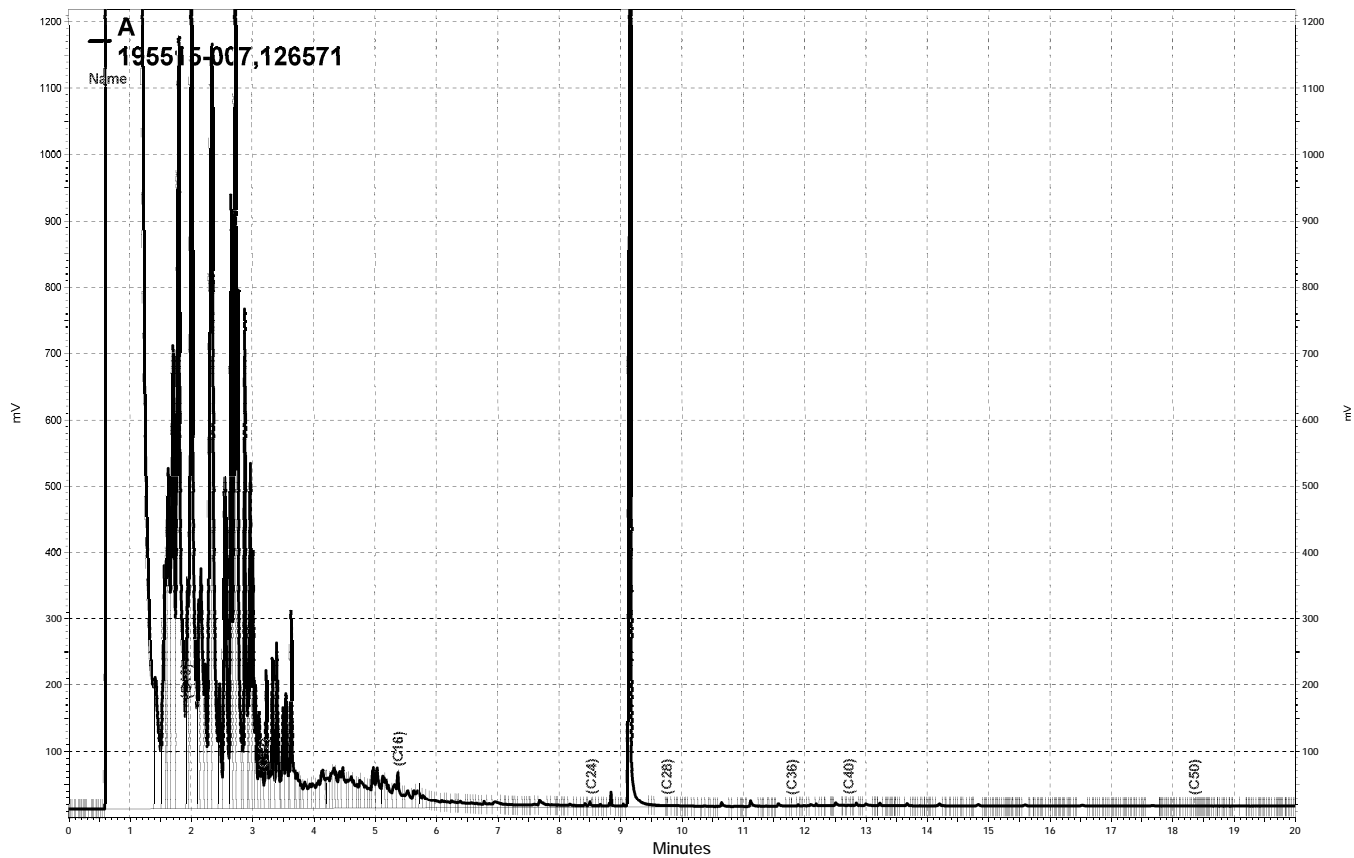
— \\Lims\gdrive\ezchrom\Projects\GC17A\Data\175a025, A



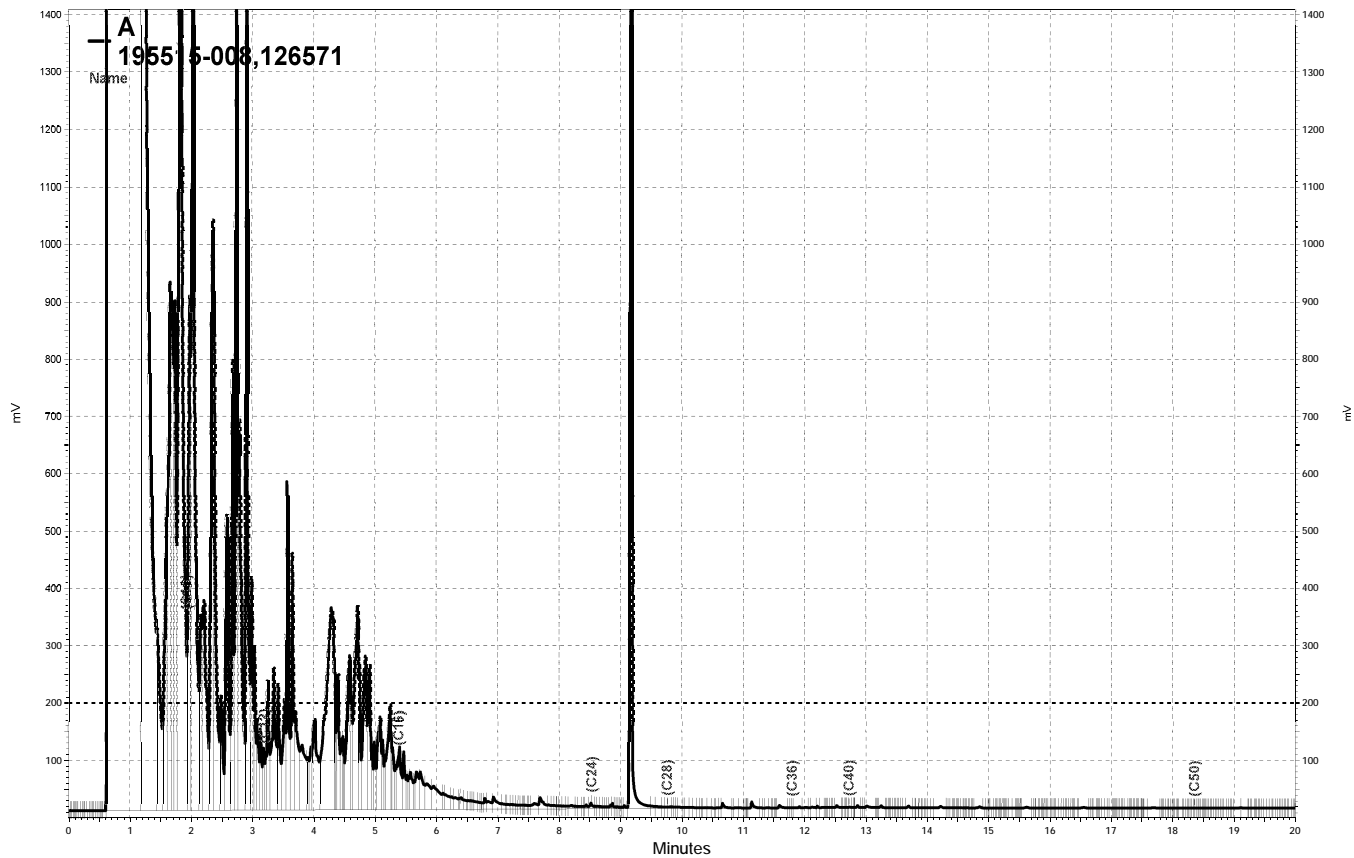
\\Lims\gdrive\ezchrom\Projects\GC17A\Data\175a026, A



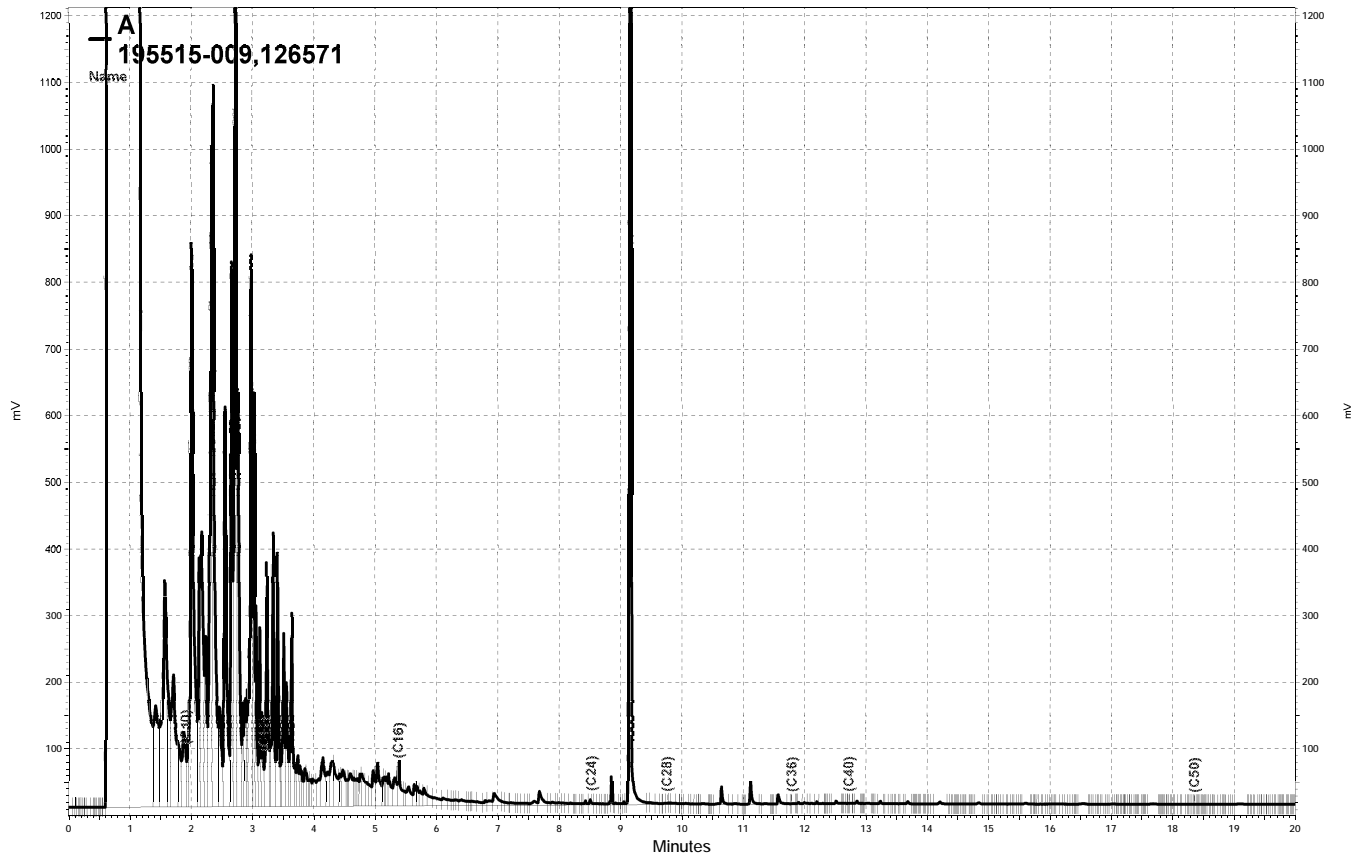
\\Lims\drive\ezchrom\Projects\GC17A\Data\175a028, A



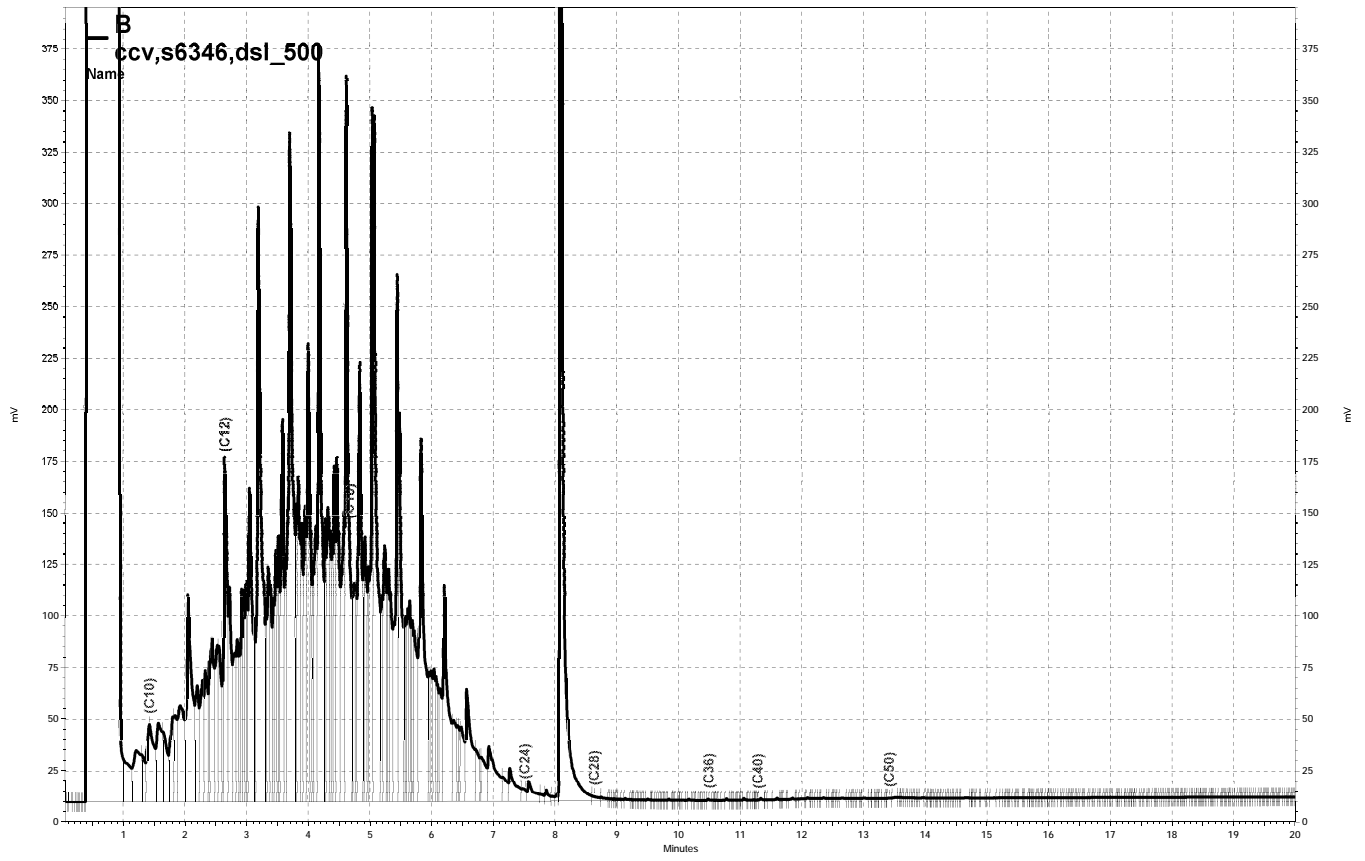
— \\Lims\gdrive\ezchrom\Projects\GC17A\Data\175a029, A



— \\Lims\gdrive\ezchrom\Projects\GC17A\Data\175a030, A



\\Lims\gdrive\ezchrom\Projects\GC17A\Data\175a031, A



— \\Lims\gdrive\ezchrom\Projects\GC15B\Data\175b004, B

APPENDIX D

Historical Groundwater and Surface Water Analytical Results

HISTORICAL GROUNDWATER MONITORING WELLS ANALYTICAL RESULTS
REDWOOD REGIONAL PARK SERVICE YARD, OAKLAND, CALIFORNIA
(all concentrations in ug/L, equivalent to parts per billion [ppb])

Well MW-2									
Event	Date	TVHg	TEHd	Benzene	Toluene	Ethylbenzene	Total Xylenes	Total BTEX	MTBE
1	Nov-94	66	< 50	3.4	< 0.5	< 0.5	0.9	4.3	NA
2	Feb-95	89	< 50	18	2.4	1.7	7.5	30	NA
3	May-95	< 50	< 50	3.9	< 0.5	1.6	2.5	8.0	NA
4	Aug-95	< 50	< 50	5.7	< 0.5	< 0.5	< 0.5	5.7	NA
5	May-96	< 50	< 50	< 0.5	< 0.5	< 0.5	< 0.5	—	NA
6	Aug-96	< 50	< 50	< 0.5	< 0.5	< 0.5	< 0.5	—	NA
7	Dec-96	< 50	< 50	6.3	< 0.5	1.6	< 0.5	7.9	NA
8	Feb-97	< 50	< 50	0.69	< 0.5	0.55	< 0.5	1.2	NA
9	May-97	67	< 50	8.9	< 0.5	5.1	< 1.0	14	NA
10	Aug-97	< 50	< 50	4.5	< 0.5	1.1	< 0.5	5.6	NA
11	Dec-97	61	< 50	21	< 0.5	6.5	3.9	31	NA
12	Feb-98	2,000	200	270	92	150	600	1,112	NA
13	Sep-98	< 50	< 50	< 0.5	< 0.5	< 0.5	< 0.5	—	7.0
14	Apr-99	82	710	4.2	< 0.5	3.4	4.0	12	7.5
15	Dec-99	57	< 50	20	0.6	5.9	< 0.5	27	4.5
16	Sep-00	< 50	< 50	0.72	< 0.5	< 0.5	< 0.5	0.7	7.9
17	Jan-01	51	< 50	8.3	< 0.5	1.5	< 0.5	9.8	8.0
18	Apr-01	110	< 50	10	< 0.5	11	6.4	27	10
19	Aug-01	260	120	30	6.7	1.6	6.4	45	27
20	Dec-01	74	69	14	0.8	3.7	3.5	22	6.6

Well MW-2 (continued)									
Event	Date	TVHg	TEHd	Benzene	Toluene	Ethylbenzene	Total Xylenes	Total BTEX	MTBE
21	Mar-02	< 50	< 50	2.3	0.51	1.9	1.3	8.3	8.2
22	Jun-02	< 50	< 50	< 0.5	< 0.5	< 0.5	< 0.5	—	7.7
23	Sep-02	98	< 50	5.0	< 0.5	< 0.5	< 0.5	—	13
24	Dec-02	< 50	< 50	4.3	< 0.5	< 0.5	< 0.5	—	< 2.0
25	Mar-03	130	82	39	< 0.5	20	4.1	63	16
26	Jun-03	< 50	< 50	1.9	< 0.5	< 0.5	< 0.5	1.9	8.7
27	Sep-03	120	< 50	8.6	0.51	0.53	< 0.5	9.6	23
28	Dec-03	282	<100	4.3	1.6	1.3	1.2	8.4	9.4
29	Mar-04	374	<100	81	1.2	36	7.3	126	18
30	Jun-04	< 50	< 50	0.75	< 0.5	< 0.5	< 0.5	< 0.5	15
31	Sep-04	200	< 50	23	< 0.5	< 0.5	0.70	24	16
32	Dec-04	80	< 50	14	< 0.5	2.9	0.72	18	20
33	Mar-05	190	68	27	<0.5	14	11	52	26
34	Jun-05	68	< 50	7.1	< 0.5	6.9	1.8	16	24
35	Sep-05	< 50	< 50	2.5	< 0.5	< 0.5	< 1.0	2.5	23
36	Dec-05	< 50	< 50	3.9	< 0.5	< 0.5	< 1.0	3.9	23
37	Mar-06	1300	300	77	4.4	91	250	422	18
38	Jun-06	< 50	60	< 0.5	< 0.5	< 0.5	< 1.0	—	17
39	Sep-06	270	52	31	< 0.5	15	6.69	53	17
40	Dec-06	< 50	< 50	2.1	< 0.5	< 0.5	< 0.5	2	16
41	Mar-07	59	< 50	4	< 0.5	< 0.5	< 0.5	< 0.5	14
42	Jun-07	<50	<50	3.5	<0.5	<0.5	<0.5	3.5	8

Well MW-4									
Event	Date	TVHg	TEHd	Benzene	Toluene	Ethylbenzene	Total Xylenes	Total BTEX	MTBE
1	Nov-94	2,600	230	120	4.8	150	88	363	NA
2	Feb-95	11,000	330	420	17	440	460	1,337	NA
3	May-95	7,200	440	300	13	390	330	1,033	NA
4	Aug-95	1,800	240	65	6.8	89	67	227	NA
5	May-96	1,100	140	51	< 0.5	< 0.5	47	98	NA
6	Aug-96	3,700	120	63	2.0	200	144	409	NA
7	Dec-96	2,700	240	19	< 0.5	130	93	242	NA
8	Feb-97	3,300	< 50	120	1.0	150	103	374	NA
9	May-97	490	< 50	2.6	6.7	6.4	6.7	22	NA
10	Aug-97	1,900	150	8.6	3.5	78	53	143	NA
11	Dec-97	1,000	84	4.6	2.7	61	54	123	NA
12	Feb-98	5,300	340	110	24	320	402	856	NA
13	Sep-98	1,800	< 50	8.9	< 0.5	68	27	104	23
14	Apr-99	2,900	710	61	1.2	120	80	263	32
15	Dec-99	1,000	430	4.0	2.0	26	14	46	< 2.0
16	Sep-00	570	380	< 0.5	< 0.5	16	4.1	20	2.4
17	Jan-01	1,600	650	4.2	0.89	46	13.8	65	8.4
18	Apr-01	1,700	1,100	4.5	2.8	48	10.7	66	5.0
19	Aug-01	1,300	810	3.2	4.0	29	9.7	46	< 2.0
20	Dec-01	< 50	110	< 0.5	< 0.5	< 0.5	1.2	1.2	< 2.0
21	Mar-02	< 50	< 50	< 0.5	< 0.5	< 0.5	< 0.5	—	< 2.0
22	Jun-02	< 50	< 50	< 0.5	< 0.5	< 0.5	< 0.5	—	< 2.0
23	Sep-02	< 50	< 50	< 0.5	< 0.5	< 0.5	< 0.5	—	< 2.0
24	Dec-02	< 50	< 50	< 0.5	< 0.5	< 0.5	< 0.5	—	< 2.0
25	Mar-03	< 50	< 50	< 0.5	< 0.5	< 0.5	< 0.5	—	< 2.0
26	Jun-03	< 50	< 50	< 0.5	< 0.5	< 0.5	< 0.5	—	< 2.0
27	Sep-03	< 50	< 50	< 0.5	< 0.5	< 0.5	< 0.5	—	< 2.0
28	Dec-03	< 50	< 100	< 0.3	< 0.3	< 0.3	< 0.6	—	< 5.0
29	Mar-04	< 50	< 100	< 0.3	< 0.3	< 0.3	< 0.6	—	< 5.0
30	Jun-04	< 50	2,500	< 0.3	< 0.3	< 0.3	< 0.6	—	< 5.0
31	Sep-04	< 50	< 50	< 0.5	< 0.5	< 0.5	< 1.0	—	< 2.0
32	Dec-04	< 50	< 50	< 0.5	< 0.5	< 0.5	< 1.0	—	< 2.0
33	Mar-05	< 50	< 50	< 0.5	< 0.5	< 0.5	< 1.0	—	< 2.0
34	Jun-05	< 50	< 50	< 0.5	< 0.5	< 0.5	< 1.0	—	< 2.0
35	Sep-05	< 50	< 50	< 0.5	< 0.5	< 0.5	< 1.0	—	< 2.0

Groundwater monitoring in this well discontinued with Alameda County Health Care Services Agency approval.

Well MW-5									
Event	Date	TVHg	TEHd	Benzene	Toluene	Ethylbenzene	Total Xylenes	Total BTEX	MTBE
1	Nov-94	50	< 50	< 0.5	< 0.5	< 0.5	< 0.5	—	NA
2	Feb-95	70	< 50	0.6	< 0.5	< 0.5	< 0.5	0.6	NA
3	May-95	< 50	< 50	< 0.5	< 0.5	< 0.5	< 0.5	—	NA
4	Aug-95	< 50	< 50	< 0.5	< 0.5	< 0.5	< 0.5	—	NA
5	May-96	< 50	< 50	< 0.5	< 0.5	< 0.5	< 0.5	—	NA
6	Aug-96	80	< 50	< 0.5	< 0.5	< 0.5	< 0.5	—	NA
7	Dec-96	< 50	< 50	< 0.5	< 0.5	< 0.5	< 0.5	—	NA
8	Feb-97	< 50	< 50	< 0.5	< 0.5	< 0.5	< 0.5	—	NA
9	May-97	< 50	< 50	< 0.5	< 0.5	< 0.5	< 0.5	—	NA
10	Aug-97	< 50	< 50	< 0.5	< 0.5	< 0.5	< 0.5	—	NA
11	Dec-97	< 50	< 50	< 0.5	< 0.5	< 0.5	< 0.5	—	NA
12	Feb-98	< 50	< 50	< 0.5	< 0.5	< 0.5	< 0.5	—	NA
13	Sep-98	< 50	< 50	< 0.5	< 0.5	< 0.5	< 0.5	—	< 2
Groundwater monitoring in this well discontinued in 1998 with Alameda County Health Care Services Agency approval.									
Subsequent groundwater monitoring conducted to confirm plume's southern limit									
14	Jun-04	< 50	< 50	< 0.5	< 0.5	< 0.5	< 0.5	—	5.9
15	Sep-04	< 50	< 50	< 0.5	< 0.5	< 0.5	< 1.0	—	< 2.0

Well MW-7									
Event	Date	TVHg	TEHd	Benzene	Toluene	Ethylbenzene	Total Xylenes	Total BTEX	MTBE
1	Jan-01	13,000	3,100	95	4	500	289	888	95
2	Apr-01	13,000	3,900	140	< 0.5	530	278	948	52
3	Aug-01	12,000	5,000	55	25	440	198	718	19
4	Dec-01	9,100	4,600	89	< 2.5	460	228	777	< 10
5	Mar-02	8,700	3,900	220	6.2	450	191	867	200
6	Jun-02	9,300	3,500	210	6.3	380	155	751	18
7	Sep-02	9,600	3,900	180	< 0.5	380	160	720	< 2.0
8	Dec-02	9,600	3,700	110	< 0.5	400	189	699	< 2.0
9	Mar-03	10,000	3,600	210	12	360	143	725	45
10	Jun-03	9,300	4,200	190	< 10	250	130	570	200
11	Sep-03	10,000	3,300	150	11	300	136	597	< 2.0
12	Dec-03	9,140	1,100	62	45	295	184	586	89
13	Mar-04	8,170	600	104	41	306	129	580	84
14	Jun-04	9,200	2,700	150	< 0.5	290	91	531	< 2.0
15	Sep-04	9,700	3,400	98	< 0.5	300	125	523	< 2.0
16	Dec-04	8200	4,000	95	< 0.5	290	124	509	< 2.0
17	Mar-05	10,000	4,300	150	<0.5	370	71	591	<2.0
18	Jun-05	10,000	3,300	210	<1.0	410	56	676	<4.0
19	Sep-05	7,600	2,700	110	<1.0	310	54	474	<4.0
20	Dec-05	2,900	3,300	31	<1.0	140	41	212	<4.0
21	Mar-06	6,800	3,000	110	< 1.0	280	42	432	110
22	Jun-06	6,900	3,600	63	< 2.5	290	43	396	< 10
23	Sep-06	7,900	3,600	64	< 0.5	260	58	382	49
24	Dec-06	7,300	2,400	50	< 0.5	220	42	312	< 2.0
25	Mar-07	6,200	2,900	34	< 0.5	190	15	239	< 2.0
26	Jun-07	6,800	3,000	30	<1.0	160	27	217	<4.0

Well MW-8									
Event	Date	TVHg	TEHd	Benzene	Toluene	Ethylbenzene	Total Xylenes	Total BTEX	MTBE
1	Jan-01	14,000	1,800	430	17	360	1230	2,037	96
2	Apr-01	11,000	3,200	320	13	560	1,163	2,056	42
3	Aug-01	9,600	3,200	130	14	470	463	1,077	14
4	Dec-01	3,500	950	69	2.4	310	431	812	< 4.0
5	Mar-02	14,000	3,800	650	17	1,200	1,510	3,377	240
6	Jun-02	2,900	1,100	70	2.0	170	148	390	19
7	Sep-02	1,000	420	22	< 0.5	64	50	136	< 2.0
8	Dec-02	3,300	290	67	< 0.5	190	203	460	< 2.0
9	Mar-03	13,000	3,500	610	12	1,100	958	2,680	< 10
10	Jun-03	7,900	2,200	370	7.4	620	562	1,559	< 4.0
11	Sep-03	3,600	400	120	3.3	300	221	644	< 2.0
12	Dec-03	485	100	19	1.5	26	36	83	< 5.0
13	Mar-04	16,000	900	592	24	1,060	1,870	3,546	90
14	Jun-04	5,900	990	260	9.9	460	390	1,120	< 10
15	Sep-04	2,000	360	100	< 2.5	180	102	382	< 10
16	Dec-04	15,000	4,000	840	21	1,200	1,520	3,581	< 10
17	Mar-05	24,000	7,100	840	51	1,800	2,410	5,101	< 10
18	Jun-05	33,000	5,700	930	39	2,500	3,860	7,329	< 20
19	Sep-05	5,600	1,200	270	6.6	400	390	1,067	< 20
20	Dec-05	3,700	1,300	110	< 5.0	320	356	786	< 20
21	Mar-06	22,000	4,300	550	30	1,800	2,380	4,760	< 20
22	Jun-06	19,000	5,000	500	28	1,800	1,897	4,225	< 20
23	Sep-06	9,000	820	170	7.7	730	539	1,447	< 10
24	Dec-06	4,400	800	75	4.2	320	246	645	< 2.0
25	Mar-07	15,000	4,500	340	19	1,300	1,275	2,934	< 20
26	Jun-07	10,000	3,500	220	11	670	675	1,576	< 4.0

Well MW-9									
Event	Date	TVHg	TEHd	Benzene	Toluene	Ethylbenzene	Total Xylenes	Total BTEX	MTBE
1	Aug-01	11,000	170	340	13	720	616	1,689	48
2	Dec-01	9,400	2,700	250	5.1	520	317	1,092	< 10
3	Mar-02	1,700	300	53	4.2	120	67	244	20
4	Jun-02	11,000	2,500	200	16	600	509	1,325	85
5	Sep-02	3,600	2,800	440	11	260	39	750	< 4.0
6	Dec-02	7,000	3,500	380	9.5	730	147	1,266	< 10
7	Mar-03	4,400	1,400	320	6.9	400	93	820	< 2.0
8	Jun-03	7,600	1,600	490	10	620	167	1,287	< 4.0
9	Sep-03	8,300	2,900	420	14	870	200	1,504	< 10
10	Dec-03	7,080	700	287	31	901	255	1,474	< 10
11	Mar-04	3,550	600	122	15	313	84	534	35
12	Jun-04	6,800	1,700	350	< 2.5	620	99	1,069	< 10
13	Sep-04	7,100	1,900	160	8.1	600	406	1,174	< 10
14	Dec-04	4,700	2,800	160	< 2.5	470	< 0.5	630	< 10
15	Mar-05	4,200	1,600	97	< 2.5	310	42	449	< 10
16	Jun-05	9,900	2,000	170	< 2.5	590	359	1,119	< 10
17	Sep-05	3,600	1,200	250	< 0.5	330	36	616	< 2.0
18	Dec-05	8,700	1,500	150	4	650	551	1,355	< 4.0
19	Mar-06	3,600	880	37	< 1.0	210	165	412	< 4.0
20	Jun-06	3,200	1,300	39	< 1.0	220	144	403	4.2
21	Sep-06	12,000	3,300	130	8	850	604	1,592	< 1.0
22	Dec-06	12,000	2,800	140	9.4	880	634	1,663	< 10
23	Mar-07	9,600	2,900	120	8.7	780	453	1,362	< 10
24	Jun-07	7,100	2,200	75	5.2	480	298	858	< 4.0

Well MW-10									
Event	Date	TVHg	TEHd	Benzene	Toluene	Ethylbenzene	Total Xylenes	Total BTEX	MTBE
1	Aug-01	550	2,100	17	< 0.5	31	44	92	40
2	Dec-01	< 50	81	< 0.5	< 0.5	< 0.5	< 0.5	—	25
3	Mar-02	< 50	< 50	0.61	< 0.5	< 0.5	< 0.5	0.61	6.0
4	Jun-02	< 50	< 50	0.59	< 0.5	0.58	< 0.5	1.2	9.0
5	Sep-02	160	120	10	< 0.5	6.7	3.6	20	26
6	Dec-02	< 50	< 50	< 0.5	< 0.5	< 0.5	< 0.5	—	16
7	Mar-03	110	< 50	11	< 0.5	12	1.3	24	15
8	Jun-03	110	< 50	9.6	< 0.5	6.8	< 0.5	16	9.0
9	Sep-03	< 50	< 50	1.1	< 0.5	1.5	< 0.5	2.6	7.0
10	Dec-03	162	<100	6.9	<0.3	8.0	<0.6	15	9.9
11	Mar-04	94	<100	2.8	<0.3	5.7	7.0	16	<5.0
12	Jun-04	150	56	11	< 0.5	12	< 0.5	23	15
13	Sep-04	< 50	< 50	1.6	< 0.5	1.9	< 1.0	3.5	5.8
14	Dec-04	64	< 50	3.7	< 0.5	3.7	0.7	8.1	10
15	Mar-05	95	98	8.3	<0.5	7.7	0.77	17	13
16	Jun-05	150	57	14	<0.5	10	1.0	25	<2.0
17	Sep-05	87	< 50	5.0	<0.5	3.6	<1.0	8.6	<2.0
18	Dec-05	< 50	< 50	1.2	<0.5	<0.5	<1.0	1.2	7.8
19	Mar-06	58	71	3.2	<0.5	2.2	<1.0	5.4	8.8
20	Jun-06	73	140	4.9	<0.5	2.5	<1.0	7.4	5.3
21	Sep-06	88	51	<0.5	<0.5	<0.5	<0.5	<0.5	9.6
22	Dec-06	<50	<50	0.61	<0.5	0.55	<0.5	1.2	3.7
23	Mar-07	57	<50	3.6	<0.5	2.2	<0.5	5.8	3.1
24	Jun-07	60	65	2.4	<0.5	1.6	<0.5	4.0	4.0

Well MW-11									
Event	Date	TVHg	TEHd	Benzene	Toluene	Ethylbenzene	Total Xylenes	Total BTEX	MTBE
1	Aug-01	17,000	7,800	390	17	820	344	1,571	< 10
2	Dec-01	5,800	2,800	280	7.8	500	213	1,001	< 10
3	Mar-02	100	94	< 0.5	< 0.5	0.64	< 0.5	0.64	2.4
4	Jun-02	8,200	2,600	570	13	560	170	1,313	< 4
5	Sep-02	12,000	4,400	330	13	880	654	1,877	< 10
6	Dec-02	18,000	4,500	420	< 2.5	1,100	912	2,432	< 10
7	Mar-03	7,800	2,600	170	4.7	530	337	1,042	53
8	Jun-03	14,000	3,800	250	< 2.5	870	693	1,813	< 10
9	Sep-03	10,000	3,000	250	9.9	700	527	1,487	< 4
10	Dec-03	15,000	1,100	314	60	1,070	802	2,246	173
11	Mar-04	4,900	400	72	17	342	233	664	61
12	Jun-04	10,000	2,300	210	2.8	690	514	1,417	< 10
13	Sep-04	7,200	2,300	340	< 2.5	840	75	1,255	< 10
14	Dec-04	11,000	3,900	180	5.1	780	695	1,660	< 10
15	Mar-05	4,600	1,900	69	< 2.5	300	206	575	< 10
16	Jun-05	1,400	590	85	< 0.5	110	8.2	203	< 2.0
17	Sep-05	12,000	3,100	220	< 1.0	840	762	1,822	< 4.0
18	Dec-05	2,500	2,100	120	< 2.5	260	16	396	< 10
19	Mar-06	2,200	1,300	27	< 2.5	130	5.2	162	< 10
20	Jun-06	3,700	1,900	170	< 1.0	230	14	414	< 4.0
21	Sep-06	3,600	2,100	80	< 0.5	230	8.8	319	< 2.0
22	Dec-06	6,000	3,500	83	< 1.0	260	16.4	359	< 4.0
23	Mar-07	4,500	1,900	110	< 0.5	170	7.9	288	< 2.0
24	Jun-07	4	2,200	120	< 0.5	140	6.6	267	< 4.0

Well MW-12									
Event	Date	TVHg	TEHd	Benzene	Toluene	Ethylbenzene	Total Xylenes	Total BTEX	MTBE
1	Dec-05	1,300	700	< 0.5	< 0.5	33	5.6	39	< 2.0
2	Mar-06	1,100	540	< 0.5	< 0.5	8.5	1.5	10	49
3	Jun-06	680	400	< 0.5	< 0.5	5.8	1.4	7.2	< 2.0
4	Sep-06	910	480	< 0.5	< 0.5	9.9	1.5	11.4	21
5	Dec-06	770	230	< 0.5	< 0.5	7.4	2.0	9.4	< 2.0
6	Mar-07	390	110	< 0.5	< 0.5	1.7	1.7	3.4	< 2.0
7	Jun-07	590	280	< 0.5	< 0.5	4.5	0.9	5.4	< 2.0

**HISTORICAL SURFACE WATER ANALYTICAL RESULTS
REDWOOD REGIONAL PARK SERVICE YARD, OAKLAND, CALIFORNIA**

(all concentrations in ug/L, equivalent to parts per billion [ppb])

Sampling Location SW-1 (Upstream of Contaminated Groundwater Discharge Location SW-2)									
Event	Date	TVHg	TEHd	Benzene	Toluene	Ethylbenzene	Total Xylenes	Total BTEX	MTBE
1	Feb-94	50	< 50	< 0.5	< 0.5	< 0.5	< 0.5	—	NA
2	May-95	< 50	< 50	< 0.5	< 0.5	< 0.5	< 0.5	—	NA
3	May-96	< 50	< 50	< 0.5	< 0.5	< 0.5	< 0.5	—	NA
4	Aug-96	< 50	< 50	< 0.5	< 0.5	< 0.5	< 0.5	—	NA
5	Dec-96	< 50	< 50	< 0.5	< 0.5	< 0.5	< 0.5	—	NA
6	Feb-97	< 50	< 50	< 0.5	< 0.5	< 0.5	< 0.5	—	NA
7	Aug-97	< 50	< 50	< 0.5	< 0.5	< 0.5	< 0.5	—	NA
8	Dec-97	< 50	< 50	< 0.5	< 0.5	< 0.5	< 0.5	—	NA
9	Feb-98	< 50	< 50	< 0.5	< 0.5	< 0.5	< 0.5	—	NA
10	Sep-98	< 50	< 50	< 0.5	< 0.5	< 0.5	< 0.5	—	< 2.0
11	Apr-99	< 50	< 50	< 0.5	< 0.5	< 0.5	< 0.5	—	< 2.0
Sampling at this location discontinued after April 1999 with Alameda County Health Services Agency approval.									

Sampling Location SW-2 (Area of Historical Contaminated Groundwater Discharge)									
Event	Date	TVHg	TEHd	Benzene	Toluene	Ethylbenzene	Total Xylenes	Total BTEX	MTBE
1	Feb-94	130	< 50	1.9	< 0.5	4.4	3.2	9.5	NA
2	May-95	< 50	< 50	< 0.5	< 0.5	< 0.5	< 0.5	—	NA
3	Aug-95	< 50	< 50	< 0.5	< 0.5	< 0.5	< 0.5	—	NA
4	May-96	< 50	< 50	< 0.5	< 0.5	< 0.5	< 0.5	—	NA
5	Aug-96	200	< 50	7.5	< 0.5	5.4	< 0.5	13	NA
6	Dec-96	< 50	< 50	< 0.5	< 0.5	< 0.5	< 0.5	—	NA
7	Feb-97	< 50	< 50	< 0.5	< 0.5	< 0.5	< 0.5	—	NA
8	Aug-97	350	130	13	0.89	19	11	44	NA
9	Dec-97	< 50	< 50	< 0.5	< 0.5	< 0.5	< 0.5	—	NA
10	Feb-98	< 50	< 50	< 0.5	< 0.5	< 0.5	< 0.5	—	NA
11	Sep-98	< 50	<50	< 0.5	< 0.5	< 0.5	< 0.5	—	< 2.0
12	Apr-99	81	<50	2.0	< 0.5	2.5	1.3	5.8	2.3
13	Dec-99	1,300	250	10	1.0	47	27	85	2.2
14	Sep-00	160	100	2.1	< 0.5	5.2	1.9	9.2	3.4
15	Jan-01	< 50	< 50	< 0.5	< 0.5	0.53	< 0.5	0.5	< 2.0
16	Apr-01	< 50	< 50	< 0.5	< 0.5	< 0.5	< 0.5	—	< 2.0
17	Sep-01	440	200	2.1	< 0.5	17	1.3	20	10
18	Dec-01	< 50	< 50	< 0.5	< 0.5	< 0.5	< 0.5	—	< 2.0
19	Mar-02	< 50	< 50	< 0.5	< 0.5	< 0.5	< 0.5	—	< 2.0
20	Jun-02	< 50	< 50	< 0.5	< 0.5	< 0.5	< 0.5	—	< 2.0
21	Sep-02	220	590	10	< 0.5	13	< 0.5	23	< 2.0
22	Dec-02	< 50	< 50	< 0.5	< 0.5	< 0.5	< 0.5	—	< 2.0
23	Mar-03	< 50	< 50	< 0.5	< 0.5	0.56	< 0.5	0.56	2.8
24	Jun-03	< 50	< 50	< 0.5	< 0.5	< 0.5	< 0.5	—	< 2.0
25	Sep-03	190	92	2.1	< 0.5	4.2	< 0.5	6.3	< 2.0
26	Dec-03	86	< 100	< 0.3	< 0.3	< 0.3	< 0.6	—	< 5.0
27	Mar-04	<50	<100	<0.3	<0.3	1.1	<0.6	1.1	< 5.0
28	Jun-04	<50	<50	<0.5	<0.5	0.83	<0.5	0.83	< 2.0
29	Sep-04	260	370	4.4	<0.5	6.3	< 1.0	11	< 2.0
30	Dec-04	<50	<50	<0.5	<0.5	<0.5	< 1.0	—	< 2.0
31	Mar-05	<50	<50	<0.5	<0.5	<0.5	< 1.0	—	< 2.0
32	Jun-05	<50	<50	<0.5	<0.5	<0.5	< 1.0	—	< 2.0
33	Sep-05	<50	<50	<0.5	<0.5	<0.5	< 1.0	—	< 2.0
34	Dec-05	<50	<50	<0.5	<0.5	<0.5	< 1.0	—	< 2.0
35	Mar-06	<50	62	<0.5	<0.5	<0.5	< 1.0	—	< 2.0
36	Jun-06	<50	110	<0.5	<0.5	<0.5	< 1.0	—	< 2.0
37	Sep-06	62	94	<0.5	<0.5	0.81	<0.5	0.8	< 2.0
38	Dec-06	<50	<50	<0.5	<0.5	<0.5	< 1.0	—	< 2.0
39	Mar-07	<50	<50	<0.5	<0.5	<0.5	< 1.0	—	< 2.0
40	Jun-07	<50	<50	<0.5	<0.5	<0.5	<0.5	—	<2.0

Sampling Location SW-3 (Downstream of Contaminated Groundwater Discharge Location SW-2)									
Event	Date	TVHg	TEHd	Benzene	Toluene	Ethylbenzene	Total Xylenes	Total BTEX	MTBE
1	May-95	< 50	< 50	< 0.5	< 0.5	< 0.5	< 0.5	—	NA
2	Aug-95	< 50	< 50	< 0.5	< 0.5	< 0.5	< 0.5	—	NA
3	May-96	< 50	74	< 0.5	< 0.5	< 0.5	< 0.5	—	NA
4	Aug-96	69	< 50	< 0.5	< 0.5	< 0.5	< 0.5	—	NA
5	Dec-96	< 50	< 50	< 0.5	< 0.5	< 0.5	< 0.5	—	NA
6	Feb-97	< 50	< 50	< 0.5	< 0.5	< 0.5	< 0.5	—	NA
7	Aug-97	< 50	< 50	< 0.5	< 0.5	< 0.5	< 0.5	—	NA
8	Dec-97	< 50	< 50	< 0.5	< 0.5	< 0.5	< 0.5	—	NA
9	Feb-98	< 50	< 50	< 0.5	< 0.5	< 0.5	< 0.5	—	NA
10	Sep-98	< 50	<50	< 0.5	< 0.5	< 0.5	< 0.5	—	< 2.0
11	Apr-99	< 50	<50	< 0.5	< 0.5	< 0.5	< 0.5	—	< 2.0
12	Dec-99	< 50	<50	< 0.5	< 0.5	< 0.5	< 0.5	—	< 2.0
13	Sep-00	NS	NS	NS	NS	NS	NS	—	NS
14	Jan-01	< 50	<50	< 0.5	< 0.5	< 0.5	< 0.5	—	< 2.0
15	Apr-01	< 50	<50	< 0.5	< 0.5	< 0.5	< 0.5	—	< 2.0
16	Sep-01	NS	NS	NS	NS	NS	NS	—	NS
17	Dec-01	< 50	< 50	< 0.5	< 0.5	< 0.5	< 0.5	—	< 2.0
18	Mar-02	< 50	< 50	< 0.5	< 0.5	< 0.5	< 0.5	—	< 2.0
19	Jun-02	< 50	< 50	< 0.5	< 0.5	< 0.5	< 0.5	—	2.4
20	Sep-02	NS	NS	NS	NS	NS	NS	—	NS
21	Dec-02	< 50	< 50	< 0.5	< 0.5	< 0.5	< 0.5	—	< 2.0
22	Mar-03	< 50	< 50	< 0.5	< 0.5	< 0.5	< 0.5	—	< 2.0
23	Jun-03	< 50	< 50	< 0.5	< 0.5	< 0.5	< 0.5	—	< 2.0
24	Sep-03	NS	NS	NS	NS	NS	NS	—	NS
25	Dec-03	60	< 100	< 0.3	< 0.3	< 0.3	< 0.6	—	< 5.0
26	Mar-04	<50	<100	<0.3	<0.3	<0.6	<0.6	—	< 5.0
27	Jun-04	NS	NS	NS	NS	NS	NS	—	NS
28	Sep-04	NS	NS	NS	NS	NS	NS	—	NS
29	Dec-04	<50	<50	<0.5	<0.5	<0.5	< 1.0	—	< 2.0
30	Mar-05	<50	<50	<0.5	<0.5	<0.5	< 1.0	—	< 2.0
31	Jun-05	<50	<50	<0.5	<0.5	<0.5	< 1.0	—	< 2.0
32	Sep-05	<50	<50	<0.5	<0.5	<0.5	< 1.0	—	< 2.0
33	Dec-05	<50	<50	<0.5	<0.5	<0.5	< 1.0	—	< 2.0
34	Mar-06	<50	<50	<0.5	<0.5	<0.5	< 1.0	—	< 2.0
35	Jun-06	<50	120	<0.5	<0.5	<0.5	< 1.0	—	< 2.0
36	Sep-06	<50	120	<0.5	<0.5	<0.5	<0.5	—	7.8
37	Dec-06	<50	<50	<0.5	<0.5	<0.5	< 1.0	—	< 2.0
38	Mar-07	<50	<50	<0.5	<0.5	<0.5	< 1.0	—	3.3
39	Jun-07	<50	<50	<0.5	<0.5	<0.5	<0.5	—	<2.0

NS = Not Sampled (no surface water present during sampling event)