

5/27/98

To: Susan Hugo 510 3379335
From: Joel Greger - Geo-Logic

Re: Over excavation - Berkeley Farms Truck Yard
4575 San Pablo, Emeryville

Former service station (South end of site
at 45th St)

Attached are results of sidewall soil
samples, Kentucky Fried Chicken
is planning to build as soon as
we backfill. Backfilling is planned to
start Thursday 5/28/98

5/27/98

Draft

Site: Former Berkeley Farms
Truck Yard / Former
Phillips 66 Station
4575 San Pablo
Emeryville

GEO-LOGIC
~~February 10, 1998~~
May 26, 1998

TABLE 1

SUMMARY OF LABORATORY ANALYSES
SOIL - Over excavation of former fuel tank
pit at Southern end of Berkeley Farms Site near 45th St.
Former Phillips 66 Service Station

Sample/depth	TPH as Diesel	TPH as Gasoline	Benzene	Toluene	Ethylbenzene	Xylenes
--------------	---------------	-----------------	---------	---------	--------------	---------

(Collected on April 30, 1998)

South wall KS (8.5')	NA	<0.1	5.0	4.1	5.8	90
----------------------	----	------	-----	-----	-----	----

(Collected on May 8, 1998)

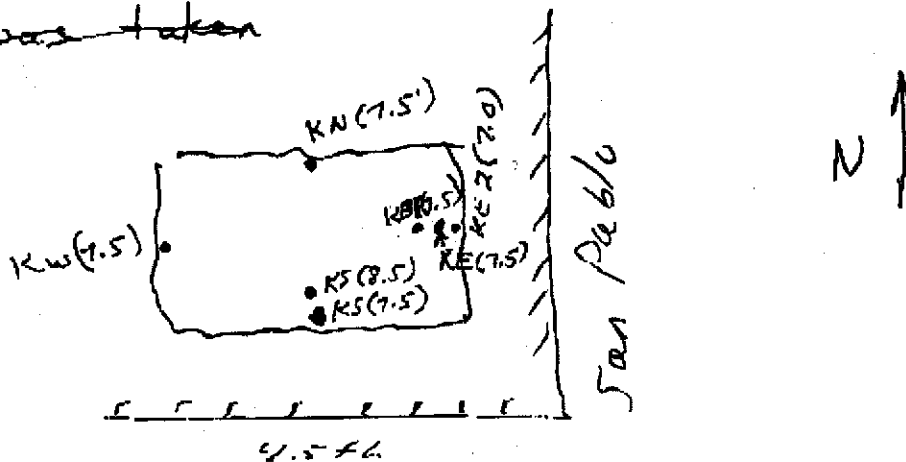
North wall KN (7.5')	<0.1	<0.1	<0.005	<0.005	<0.005	<0.005
South wall after additional excavation KS (7.5')	<0.1	<0.1	<0.005	<0.005	<0.005	<0.005
E. wall KE (7.5')	<0.1	<0.1	<0.005	<0.005	<0.005	<0.005
W. wall KW (7.5')	<0.1	<0.1	<0.005	<0.005	<0.005	<0.005
E side bottom KB1 (7.5')	3,900	<0.1	<0.005	30	<0.005	<0.005

(Collected on May 15, 1998)

after additional excavation - vicinity of KB1 KE2 (7.0')	60	<0.1	<0.005	<0.005	<0.005	<0.005
Detection Limit	0.1	0.1	0.005	0.005	0.005	0.005

Results are in milligrams per kilogram (mg/kg).

KE2 was taken



Confirmation samples

TABLE 2

SUMMARY OF LABORATORY ANALYSES
SOIL

(Collected on January 11, 1998)

<u>Sample/depth</u>	<u>TPH as Diesel</u>	<u>TPH as Gasoline</u>	<u>Benzene</u>	<u>Toluene</u>	<u>Ethyl-benzene</u>	<u>Xylenes</u>
WO-N side (11.0')	<0.05	<0.05	<0.005	<0.005	<0.005	<0.005
WO-S side (11.0')	<0.05	<0.05	<0.005	<0.005	<0.005	<0.005
WO-E side (10.5')	<0.05	<0.05	<0.005	<0.005	<0.005	<0.005
WO-W side (10.5')	<0.05	<0.05	<0.005	<0.005	<0.005	<0.005
WO-Bottom (13.5')	<0.05	<0.05	<0.005	<0.005	<0.005	<0.005
Detection Limit	0.05 ✓	0.05 ✓	0.005 ✓	0.005 ✓	0.005 ✓	0.005 ✓

<u>Sample/depth</u>	<u>TRPH</u>	<u>Cadmium</u>	<u>Chromium</u>	<u>Lead</u>	<u>Nickel</u>	<u>Zinc</u>
WO-N side (11.0')	16	0.73	22	9.7	44	43
WO-S side (11.0')	22	0.38	26	9.2	39	32
WO-E side (10.5')	20	0.49	29	9.7	34	37
WO-W side (10.5')	31	0.33	24	9.1	27	35
WO-Bottom (13.5')	17	0.74	24	9.4	35	38
Detection Limit	5.0	0.50	2.0	2.0	0.50	0.25

All other volatile organic compounds were nondetectable.

Results are in milligrams per kilogram (mg/kg).

TABLE 3

SUMMARY OF LABORATORY ANALYSES
WATER

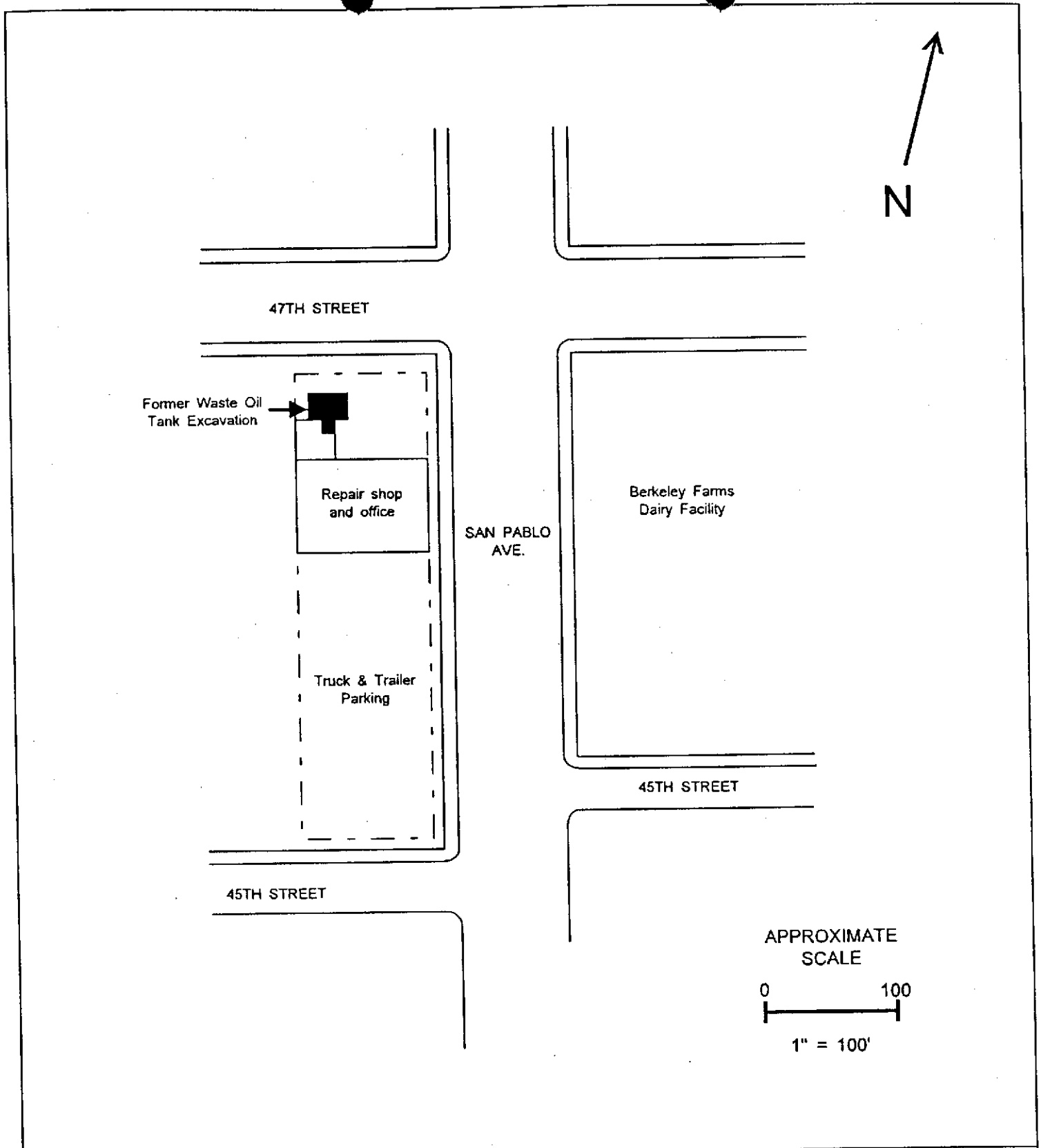
(Collected on January 15, 1998)

<u>Sample #</u>	<u>TPH as Diesel</u>	<u>TPH as Gasoline</u>	<u>Benzene</u>	<u>Toluene</u>	<u>Ethyl benzene</u>	<u>Xylenes</u>
WO-Water 1	27,000 ✓	<50 ✓	37	12	56	110
Detection Limit	50	50	5.0	5.0	5.0	5.0

<u>Sample #</u>	<u>TRPH</u>	<u>Cadmium</u>	<u>Chromium</u>	<u>Lead</u>	<u>Nickel</u>	<u>Zinc</u>
WO-Water 1 ^{7/10}	40,000	26 ✓	0.38 380	1,200	1.7 1,700 ppm	3.4 ³⁴⁰⁰
Detection Limit	5.0	0.50	2.0	2.0	0.50	0.25

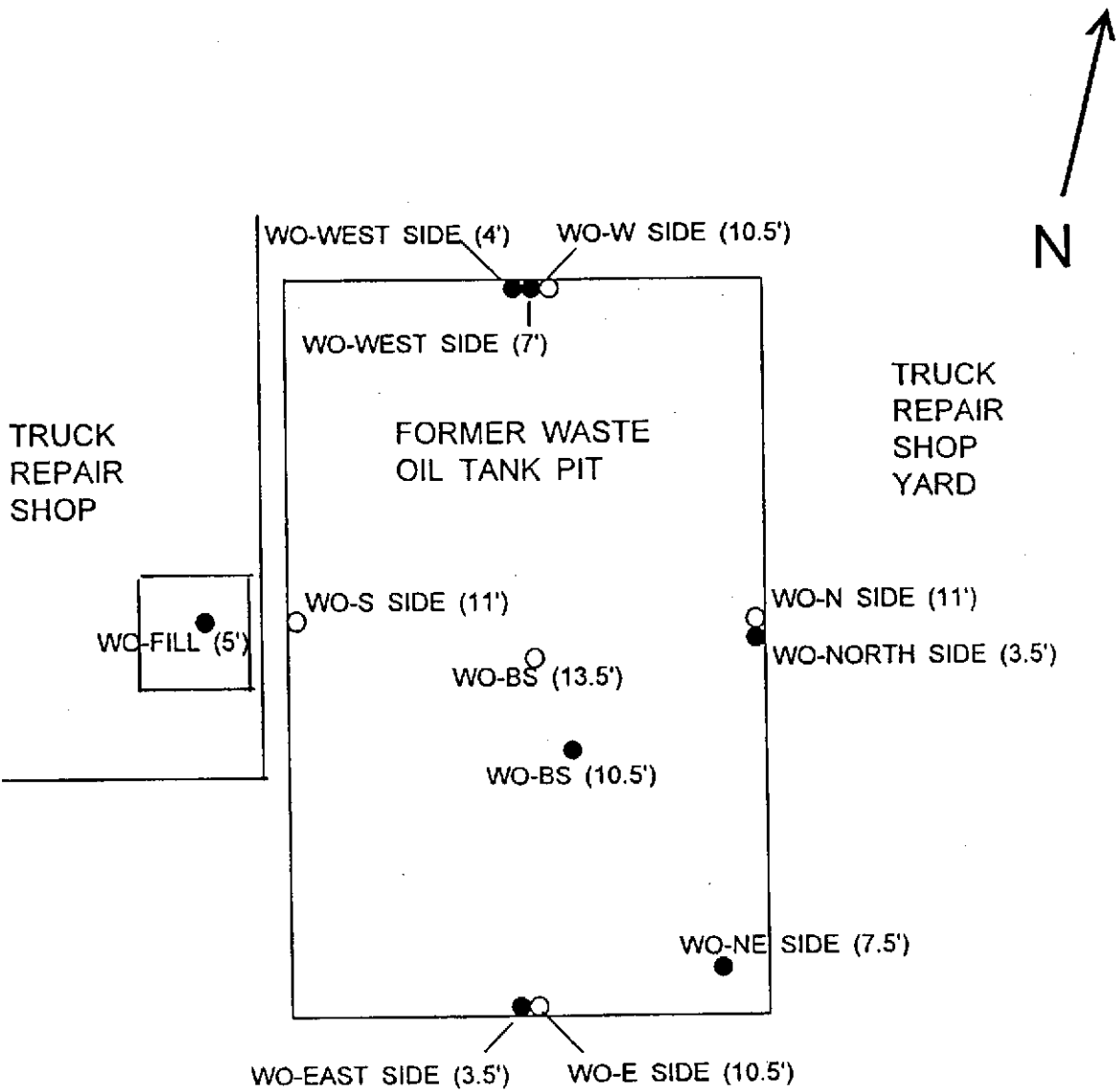
All other volatile organic compounds were nondetectable.

Results are in micrograms per liter ($\mu\text{g/L}$), except for the metals cadmium, chromium, lead, nickel, and zinc, which are in milligrams per kilogram (mg/kg). The metals analyses was performed on the solids portion of the water sample.



Berkeley Farms Truck Repair Shop & Yard 4575 San Pablo Avenue Emeryville, California	Figure No: 1	Date: January 23, 1998
		Drawn By: JG/Geo-Logic

SITE PLAN



LEGEND

- Soil samples collected on November 22, 1997
- Soil samples collected on January 10, 1998

APPROXIMATE
SCALE:
0 5
|-----|
1" = 5'

Berkeley Farms Truck Repair Shop & Yard 4575 San Pablo Avenue Emeryville, California	Figure No: 2	Date: January 23, 1998
		Drawn By: JG/GEO-LOGIC

Former Waste Oil Tank Excavation