



R0228G

Denis L. Brown

October 3, 2005

Jerry Wickham
Alameda County Health Care Services Agency
1131 Harbor Bay Parkway, Suite 250
Alameda, CA 94502-6577

Shell Oil Products US
HSE – Environmental Services
20945 S. Wilmington Ave.
Carson, CA 90810-1039
Tel (707) 865 0251
Fax (707) 865 2542
Email denis.l.brown@shell.com

Re: Groundwater Monitoring Report –Third Quarter 2005
Shell-branded Service Station
630 High Street
Oakland, California
SAP Code: 135693
Incident No. 98995751

Alameda County
OCT 05 2005
Environmental Health

Dear Mr. Wickham:

Attached for your review and comment is a copy of the *Groundwater Monitoring Report – Third Quarter 2005* for the above referenced site. Upon information and belief, I declare, under penalty of perjury, that the information contained in the attached document is true and correct.

If you have any questions or concerns, please call me at (707) 865-0251.

Sincerely,

Denis L. Brown
Sr. Environmental Engineer

October 3, 2005

Jerry Wickham
Alameda County Health Care Services Agency
1131 Harbor Bay Parkway, Suite 250
Alameda, California 94502-6577

Re: **Groundwater Monitoring Report - Third Quarter 2005**
Shell-branded Service Station
630 High Street
Oakland, California
SAP Code 135693
Incident No. 98995751

Alameda County
OCT 05 2005
Environmental Health



Dear Mr. Wickham:

Cambria Environmental Technology, Inc. (Cambria) prepared this report on behalf of Equilon Enterprises LLC dba Shell Oil Products US (Shell) in accordance with the quarterly reporting requirements of 23 CCR 2652d.

THIRD QUARTER 2005 ACTIVITIES

Groundwater Monitoring Activities: Blaine Tech Services, Inc. (Blaine) of San Jose, California gauged all site wells, sampled selected wells, and prepared a summary table of field gauging and laboratory analytical data. Cambria prepared a vicinity/area well survey map (Figure 1) and a groundwater contour/chemical concentration map (Figure 2). Blaine's report, presenting the laboratory report and supporting field documents, is included as Appendix A.

Other Site Activities: In correspondence dated August 1, 2005, the Alameda County Environmental Health (ACEH) concurred with Shell's request to destroy wells MW-2, MW-8, MW-9, and MW-10, requested additional chemical analyses during monitoring events, and requested a work plan or response related to further investigation of preferential pathways. Cambria requested the additional chemical analyses for the third quarter monitoring event, and submitted a *Plume Delineation Work Plan* dated September 13, 2005. Because the third quarter event occurred on August 4, 2005, only tert butyl alcohol was successfully added to the analytical suite. Analysis for total petroleum hydrocarbons as diesel was not performed during third quarter.

Cambria
Environmental
Technology, Inc.

270 Perkins Street
Sonoma, CA 95476
Tel (707) 935-4850
Fax (707) 935-6649

ANTICIPATED FOURTH QUARTER 2005 ACTIVITIES

Groundwater Monitoring Activities: Blaine will gauge all site wells, sample selected wells, and tabulate the data. Cambria will prepare a groundwater monitoring report. Due to the fact that samples for diesel analysis were not collected during the third quarter, they will be collected and reported for fourth quarter.

Other Site Activities: The destruction of the four monitoring wells is scheduled to occur on October 6, 2005. ACEH will be notified 72-hours prior to the field event, and the report of well destructions will be submitted within 45-days following the destruction activities. Upon receipt of written approval of the *Plume Delineation Work Plan*, permitting and scheduling of those activities will occur.



CLOSING

If you have any questions or comments regarding this submittal, please call Ana Friel at (707) 268-3812.

Sincerely,
Cambria Environmental Technology, Inc

Martha Murphy
for Lisa Summers
Staff Scientist

Ana Friel
Ana Friel
Senior Project Geologist
PG 6452

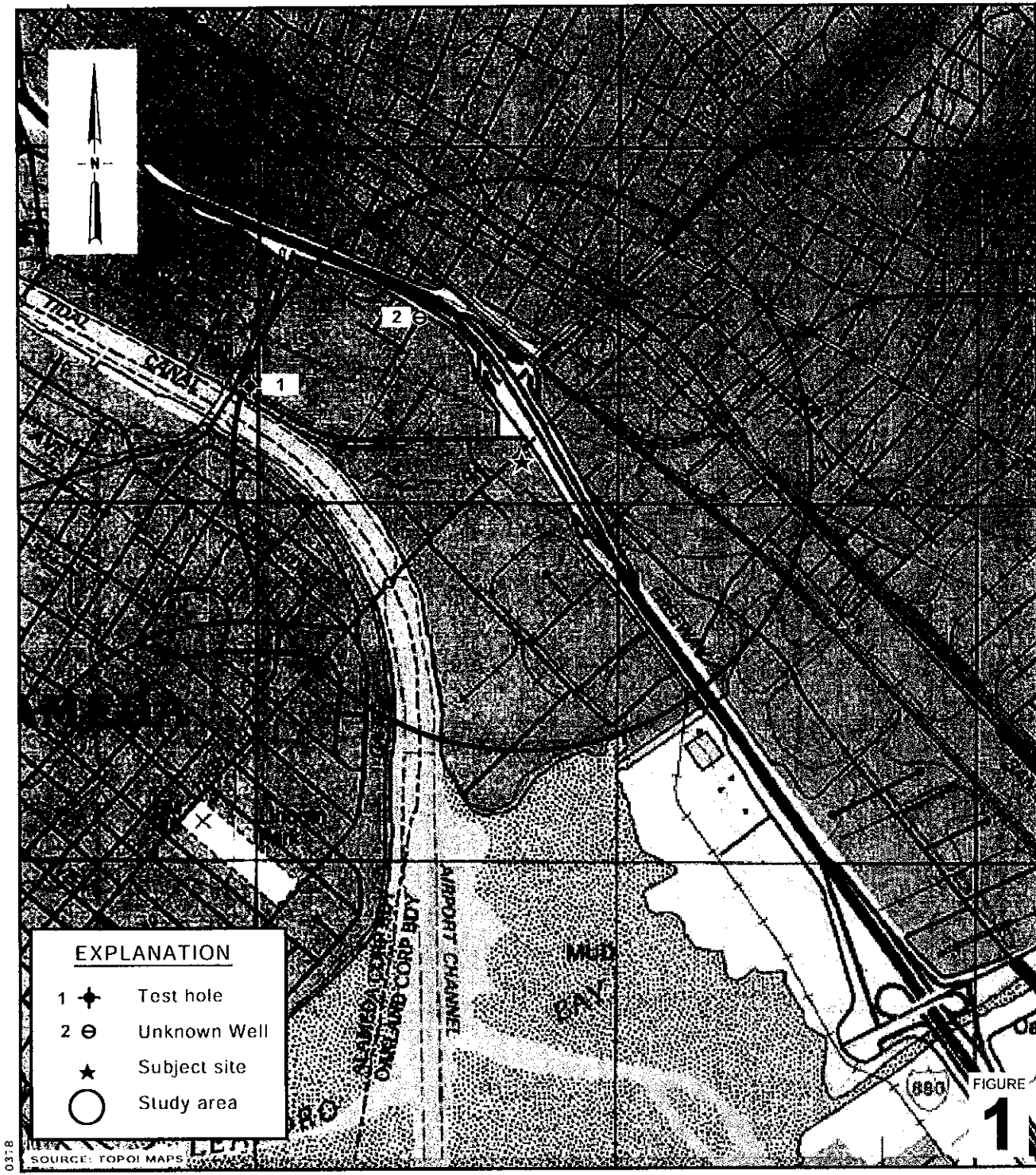


Attachments:

- Figure 1. Vicinity/Area Well Survey Map
- Figure 2. Groundwater Contour/Chemical Concentration Map

- Appendix A. Blaine Tech Services – Groundwater Monitoring Report

cc: Denis Brown, Shell Oil Products US



Shell-branded Service Station
 630 High Street
 Oakland, California



**Vicinity/Area Well
 Survey Map**
 (1/2-Mile Radius)

Appendix A
Blaine Tech Services
Groundwater Monitoring Report

BLAINE
TECH SERVICES INC.

GROUNDWATER SAMPLING SPECIALISTS
SINCE 1985

August 30, 2005

Denis Brown
Shell Oil Products US
20945 South Wilmington Avenue
Carson, CA 90810

Third Quarter 2005 Groundwater Monitoring at
Shell-branded Service Station
630 High Street
Oakland, CA

Monitoring performed on August 4, 2005

Groundwater Monitoring Report 050804-PC-2

This report covers the routine monitoring of groundwater wells at this Shell-branded facility. In accordance with standard procedures that conform to Regional Water Quality Control Board requirements, routine field data collection includes depth to water, total well depth, thickness of any separate immiscible layer, water column volume, calculated purge volume (if applicable), elapsed evacuation time (if applicable), total volume of water removed (if applicable), and standard water parameter instrument readings. Sample material is collected, contained, stored, and transported to the laboratory in conformance with EPA standards. Purgewater (if applicable) is, likewise, collected and transported to the Martinez Refining Company.

Basic field information is presented alongside analytical values excerpted from the laboratory report in the cumulative table of **WELL CONCENTRATIONS**. The full analytical report for the most recent samples and the field data sheets are attached to this report.

At a minimum, Blaine Tech Services, Inc. field personnel are certified on completion of a forty-hour Hazardous Materials and Emergency Response training course per 29 CFR 1910.120. Field personnel are also enrolled in annual eight-hour refresher courses.

Blaine Tech Services, Inc. conducts sampling and documentation assignments of this type as an independent third party. Our activities at this site consisted of objective data and sample collection only. No interpretation of analytical results, defining of hydrological conditions or formulation of recommendations was performed.

Please call if you have any questions.

Yours truly,

Leon Gearhart
Project Coordinator

LG/ks

attachments: Cumulative Table of WELL CONCENTRATIONS
Certified Analytical Report
Field Data Sheets

cc: Ana Friel
Cambria Environmental Technology, Inc.
P.O. Box 259
Sonoma, CA 95476-0259

WELL CONCENTRATIONS
Shell-Branded Service Station
630 High Street
Oakland, CA

Well ID	Date	TPPH (ug/L)	TEPH (ug/L)	B (ug/L)	T (ug/L)	E (ug/L)	X (ug/L)	MTBE 8020 (ug/L)	MTBE 8260 (ug/L)	DIPE (ug/L)	ETBE (ug/L)	TAME (ug/L)	TBA (ug/L)	TOC (MSL)	Depth to Water (ft.)	GW Elevation (MSL)	DO Reading (ppm)
MW-1	01/29/1991	11,000	21,000 a	310	41	500	400	NA	NA	NA	NA	NA	NA	99.35	10.79	88.56	NA
MW-1	04/30/1991	8,300	2,100	250	32	310	300	NA	NA	NA	NA	NA	NA	99.35	9.48	89.87	NA
MW-1	07/22/1991	11,000	3,800	310	36	290	280	NA	NA	NA	NA	NA	NA	99.35	10.53	88.82	NA
MW-1	02/21/1992	7,300	8,900 b	200	36	340	270	NA	NA	NA	NA	NA	NA	99.35	8.31	91.04	NA
MW-1	05/22/1992	7,600	18,000 b,c	140	<50	300	140	NA	NA	NA	NA	NA	NA	99.35	10.02	89.33	NA
MW-1	07/07/1992	NA	NA	NA	NA	NA	NA	NA	NA	NA	NA	NA	NA	99.35	10.06	89.29	NA
MW-1	08/20/1992	9,100	5,200 b	530	340	860	540	NA	NA	NA	NA	NA	NA	99.35	10.32	89.03	NA
MW-1	11/18/1992	15,000	4,100 b	220	50	790	340	NA	NA	NA	NA	NA	NA	99.35	10.64	88.71	NA
MW-1	02/09/1993	7,000	1,200	130	23	220	160	NA	NA	NA	NA	NA	NA	99.35	8.71	90.64	NA
MW-1	06/16/1993	4,800	NA	150	31	320	130	NA	NA	NA	NA	NA	NA	99.35	9.71	89.64	1.73/1.58 k
MW-1	08/24/1993	10,000	NA	170	27	610	170	NA	NA	NA	NA	NA	NA	99.35	10.23	89.12	1.49/1.70 k
MW-1	11/23/1993	7,600	NA	190	<12	430	140	NA	NA	NA	NA	NA	NA	99.35	10.48	88.87	1.77/2.80 k
MW-1	02/14/1994	8,000	NA	150	47	210	68	NA	NA	NA	NA	NA	NA	99.35	9.17	90.18	6.2/2.5 k
MW-1	05/25/1994	8,800	NA	95	<10	210	63	NA	NA	NA	NA	NA	NA	99.35	9.52	89.83	NA
MW-1	08/04/1994	6,200	NA	150	14	350	180	NA	NA	NA	NA	NA	NA	99.35	10.51	88.84	NA
MW-1	11/08/1994	7,600	NA	190	<10	480	200	NA	NA	NA	NA	NA	NA	99.35	10.20	89.15	NA
MW-1	02/01/1995	8,200	NA	130	21	170	130	NA	NA	NA	NA	NA	NA	99.35	6.94	92.41	NA
MW-1	05/04/1995	7,000	NA	130	47	190	180	NA	NA	NA	NA	NA	NA	99.35	8.40	90.95	NA
MW-1	05/16/1997	5,600	NA	57	<10	26	29	84	NA	NA	NA	NA	NA	99.35	9.93	89.42	1.5
MW-1	11/03/1997	6,900	NA	81	<10	32	30	170	NA	NA	NA	NA	NA	99.35	10.27	89.08	0.8/0.6 k
MW-1	06/05/1998	4,200	NA	68	7.6	39	69	84	NA	NA	NA	NA	NA	99.35	8.95	90.40	1.0/0.5 k
MW-1	11/06/1998	6,200	NA	87	<2.5	48	55	200	NA	NA	NA	NA	NA	99.35	10.69	88.66	1.2/1.8
MW-1	06/07/1999	5,210	NA	33.6	21.9	7.42	<5.00	153	205	NA	NA	NA	NA	99.35	9.81	89.54	NA
MW-1	06/22/1999	NA	NA	NA	NA	NA	NA	NA	NA	NA	NA	NA	NA	99.35	9.55	89.80	0.8
MW-1	08/27/1999	6,080	NA	46.0	<20.0	<20.0	26.1	303	429	NA	NA	NA	NA	99.35	10.00	89.35	0.7/1.5
MW-1	11/11/1999	7,660	NA	92.0	20.4	28.2	46.1	520	542	NA	NA	NA	NA	99.35	10.27	89.08	1.3/1.8
MW-1	04/26/2000	3,730	NA	69.4	<5.00	9.42	28.6	206	NA	NA	NA	NA	NA	99.35	9.54	89.81	2.30/2.71
MW-1	11/02/2000	4,930	NA	81.3	5.32	18.3	29.8	440	NA	NA	NA	NA	NA	99.35	8.90	90.45	3.0/3.2

WELL CONCENTRATIONS
Shell-Branded Service Station
630 High Street
Oakland, CA

Well ID	Date	TPPH (ug/L)	TEPH (ug/L)	B (ug/L)	T (ug/L)	E (ug/L)	X (ug/L)	MTBE 8020 (ug/L)	MTBE 8260 (ug/L)	DIPE (ug/L)	ETBE (ug/L)	TAME (ug/L)	TBA (ug/L)	TOC (MSL)	Depth to Water (ft.)	GW Elevation (MSL)	DO Reading (ppm)
MW-1	05/31/2001	6,800	NA	64	7.1	7.2	28	NA	790	NA	NA	NA	NA	99.35	9.25	90.10	2.3/2.6
MW-1	11/19/2001	6,100	NA	41	4.9	10	25	NA	710	NA	NA	NA	NA	99.35	10.09	89.26	1.2/0.8
MW-1	01/29/2002	7,100	NA	67	5.6	7.3	22	NA	510	NA	NA	NA	NA	99.35	9.13	90.22	4.3/6.0
MW-1	06/05/2002	4,500	NA	47	4.9	8.9	22	NA	880	NA	NA	NA	NA	99.35	9.95	89.40	NA
MW-1	07/31/2002	8,600	NA	41	6.0	17	23	NA	920	NA	NA	NA	NA	12.02	10.34	1.68	NA
MW-1	12/26/2002	6,900	NA	16	2.8	5.2	16	NA	540	NA	NA	NA	NA	12.02	7.56	4.46	NA
MW-1	01/30/2003	7,500	NA	20	3.5	4.9	15	NA	500	NA	NA	NA	NA	12.02	8.49	3.53	NA
MW-1	05/13/2003	7,200	6,300 d	32	<25	<25	<50	NA	650	NA	NA	NA	NA	12.02	8.99	3.03	NA
MW-1	07/29/2003	8,800	NA	50	7.3	16	26	NA	740	NA	NA	NA	NA	12.02	9.98	2.04	NA
MW-1	11/25/2003	8,400	NA	44	7.8	9.7	24	NA	870	NA	NA	NA	NA	12.02	9.92	2.10	NA
MW-1	02/12/2004	5,700	NA	28	5.4	9.1	20	NA	620	NA	NA	NA	NA	12.02	9.04	2.98	NA
MW-1	04/30/2004	8,200	NA	43	6.3	26	24	NA	810	NA	NA	NA	NA	12.02	9.65	2.37	NA
MW-1	08/23/2004	6,300	NA	34	<5.0	21	22	NA	510	<20	<20	<20	630	12.02	10.15	1.87	NA
MW-1	11/08/2004	7,200	NA	19	<5.0	15	19	NA	280	NA	NA	NA	NA	12.02	9.42	2.60	NA
MW-1	02/02/2005	6,800	NA	15	5.0	16	14	NA	130	NA	NA	NA	NA	12.02	8.75	3.27	NA
MW-1	05/09/2005	4,100	NA	<10	<10	21	<20	NA	69	NA	NA	NA	NA	12.02	8.30	3.72	NA
MW-1	08/04/2005	5,500	NA	24	12	13	30	NA	220	<40	<40	<40	230	12.02	9.70	2.32	NA
MW-2	01/29/1991	<50	<50	<0.5	<0.5	<0.5	<0.5	NA	NA	NA	NA	NA	NA	101.15	13.25	87.90	NA
MW-2	04/30/1991	<50	<50	<0.5	<0.5	<0.5	<0.5	NA	NA	NA	NA	NA	NA	101.15	10.94	90.21	NA
MW-2	07/22/1991	<50	<50	<0.5	<0.5	<0.5	<0.5	NA	NA	NA	NA	NA	NA	101.15	12.14	89.01	NA
MW-2	02/21/1992	<50	NA	<0.5	<0.5	<0.5	<0.5	NA	NA	NA	NA	NA	NA	101.15	10.08	91.07	NA
MW-2	05/22/1992	<50	NA	<0.5	<0.5	<0.5	<0.5	NA	NA	NA	NA	NA	NA	101.15	11.52	89.63	NA
MW-2	07/07/1992	NA	NA	NA	NA	NA	NA	NA	NA	NA	NA	NA	NA	101.15	11.50	89.65	NA
MW-2	08/20/1992	<50	NA	<0.5	<0.5	<0.5	<0.5	NA	NA	NA	NA	NA	NA	101.15	11.72	89.43	NA
MW-2	11/18/1992	<50	NA	<0.5	<0.5	<0.5	<0.5	NA	NA	NA	NA	NA	NA	101.15	13.06	88.09	NA
MW-2	02/09/1993	95	NA	<0.5	<0.5	<0.5	<0.5	NA	NA	NA	NA	NA	NA	101.15	10.06	91.09	NA
MW-2	06/16/1993	<50	NA	<0.5	<0.5	<0.5	<0.5	NA	NA	NA	NA	NA	NA	101.15	11.60	89.55	NA

WELL CONCENTRATIONS
Shell-Branded Service Station
630 High Street
Oakland, CA

Well ID	Date	TPPH (ug/L)	TEPH (ug/L)	B (ug/L)	T (ug/L)	E (ug/L)	X (ug/L)	MTBE 8020 (ug/L)	MTBE 8260 (ug/L)	DIPE (ug/L)	ETBE (ug/L)	TAME (ug/L)	TBA (ug/L)	TOC (MSL)	Depth to Water (ft.)	GW Elevation (MSL)	DO Reading (ppm)
MW-2	08/24/1993	<50	NA	<0.5	<0.5	<0.5	<0.5	NA	NA	NA	NA	NA	NA	101.15	12.16	88.99	NA
MW-2	11/23/1993	<50	NA	<0.5	<0.5	<0.5	<0.5	NA	NA	NA	NA	NA	NA	101.15	12.74	88.41	NA
MW-2	02/14/1994	<50	NA	<0.5	<0.5	<0.5	<0.5	NA	NA	NA	NA	NA	NA	101.15	10.91	90.24	NA
MW-2	05/25/1994	100	NA	1.2	4.9	2.3	13	NA	NA	NA	NA	NA	NA	101.15	11.06	90.09	NA
MW-2	08/04/1994	NA	NA	NA	NA	NA	NA	NA	NA	NA	NA	NA	NA	101.15	12.04	89.11	NA
MW-2	11/08/1994	<50	NA	<0.5	<0.5	<0.5	<0.5	NA	NA	NA	NA	NA	NA	101.15	12.38	88.77	NA
MW-2	02/01/1995	NA	NA	NA	NA	NA	NA	NA	NA	NA	NA	NA	NA	101.15	8.76	92.39	NA
MW-2	05/04/1995	<50	NA	<0.5	<0.5	<0.5	<0.5	NA	NA	NA	NA	NA	NA	101.15	10.20	90.95	NA
MW-2	05/16/1997	NA	NA	NA	NA	NA	NA	NA	NA	NA	NA	NA	NA	101.15	11.28	89.87	NA
MW-2	11/03/1997	NA	NA	NA	NA	NA	NA	NA	NA	NA	NA	NA	NA	101.15	11.71	89.44	NA
MW-2	06/05/1998	NA	NA	NA	NA	NA	NA	NA	NA	NA	NA	NA	NA	101.15	9.85	91.30	NA
MW-2	11/06/1998	NA	NA	NA	NA	NA	NA	NA	NA	NA	NA	NA	NA	101.15	12.60	88.55	NA
MW-2	06/07/1999	NA	NA	NA	NA	NA	NA	NA	NA	NA	NA	NA	NA	101.15	11.03	90.12	NA
MW-2	08/27/1999	<50.0	NA	<0.500	<0.500	<0.500	<0.500	19.2	34.5	NA	NA	NA	NA	101.15	10.98	90.17	0.71/4.0
MW-2	11/11/1999	NA	NA	NA	NA	NA	NA	NA	NA	NA	NA	NA	NA	101.15	10.33	90.82	NA
MW-2	04/26/2000	NA	NA	NA	NA	NA	NA	NA	NA	NA	NA	NA	NA	101.15	9.58	91.57	NA
MW-2	11/02/2000	NA	NA	NA	NA	NA	NA	NA	NA	NA	NA	NA	NA	101.15	10.03	91.12	NA
MW-2	05/31/2001	NA	NA	NA	NA	NA	NA	NA	NA	NA	NA	NA	NA	101.15	10.01	91.14	NA
MW-2	11/19/2001	NA	NA	NA	NA	NA	NA	NA	NA	NA	NA	NA	NA	101.15	11.63	89.52	NA
MW-2	01/29/2002	NA	NA	NA	NA	NA	NA	NA	NA	NA	NA	NA	NA	101.15	10.12	91.03	NA
MW-2	06/05/2002	NA	NA	NA	NA	NA	NA	NA	NA	NA	NA	NA	NA	101.15	11.03	90.12	NA
MW-2	07/31/2002	NA	NA	NA	NA	NA	NA	NA	NA	NA	NA	NA	NA	13.80	11.43	2.37	NA
MW-2	12/26/2002	NA	NA	NA	NA	NA	NA	NA	NA	NA	NA	NA	NA	13.80	9.94	3.86	NA
MW-2	01/30/2003	NA	NA	NA	NA	NA	NA	NA	NA	NA	NA	NA	NA	13.80	10.06	3.74	NA
MW-2	05/13/2003	NA	NA	NA	NA	NA	NA	NA	NA	NA	NA	NA	NA	13.80	10.22	3.58	NA
MW-2	07/29/2003	NA	NA	NA	NA	NA	NA	NA	NA	NA	NA	NA	NA	13.80	11.30	2.50	NA
MW-2	11/25/2003	NA	NA	NA	NA	NA	NA	NA	NA	NA	NA	NA	NA	13.80	11.73	2.07	NA
MW-2	02/12/2004	NA	NA	NA	NA	NA	NA	NA	NA	NA	NA	NA	NA	13.80	10.32	3.48	NA

WELL CONCENTRATIONS
Shell-Branded Service Station
630 High Street
Oakland, CA

Well ID	Date	TPPH (ug/L)	TEPH (ug/L)	B (ug/L)	T (ug/L)	E (ug/L)	X (ug/L)	MTBE 8020 (ug/L)	MTBE 8260 (ug/L)	DIPE (ug/L)	ETBE (ug/L)	TAME (ug/L)	TBA (ug/L)	TOC (MSL)	Depth to Water (ft.)	GW Elevation (MSL)	DO Reading (ppm)
MW-2	04/30/2004	NA	NA	NA	NA	NA	NA	NA	NA	NA	NA	NA	NA	13.80	10.78	3.02	NA
MW-2	08/23/2004	NA	NA	NA	NA	NA	NA	NA	NA	NA	NA	NA	NA	13.80	11.48	2.32	NA
MW-2	11/08/2004	NA	NA	NA	NA	NA	NA	NA	NA	NA	NA	NA	NA	13.80	11.17	2.63	NA
MW-2	02/02/2005	NA	NA	NA	NA	NA	NA	NA	NA	NA	NA	NA	NA	13.80	9.85	3.95	NA
MW-2	05/09/2005	NA	NA	NA	NA	NA	NA	NA	NA	NA	NA	NA	NA	13.80	9.40	4.40	NA
MW-2	08/04/2005	NA	NA	NA	NA	NA	NA	NA	NA	NA	NA	NA	NA	13.80	10.96	2.84	NA
MW-3	01/29/1991	2,300	410 a	17	14.1	10	230	NA	NA	NA	NA	NA	NA	99.49	11.09	88.40	NA
MW-3	04/30/1991	<50	260	22	4	7	17	NA	NA	NA	NA	NA	NA	99.49	9.57	89.92	NA
MW-3	07/22/1991	2,000	310	51	<0.5	<0.5	<0.5	NA	NA	NA	NA	NA	NA	99.49	10.66	88.83	NA
MW-3	02/21/1992	2,800	640 d	15	2.8	<2.5	12	NA	NA	NA	NA	NA	NA	99.49	8.97	90.52	NA
MW-3	05/22/1992	3,700	220 b,c	27	11	20	110	NA	NA	NA	NA	NA	NA	99.49	9.32	90.17	NA
MW-3	07/07/1992	NA	NA	NA	NA	NA	NA	NA	NA	NA	NA	NA	NA	99.49	10.22	89.27	NA
MW-3	08/20/1992	13,000	340 b	72	85	71	140	NA	NA	NA	NA	NA	NA	99.49	10.44	89.05	NA
MW-3	11/18/1992	2,100	430 b	21	3.6	11	13	NA	NA	NA	NA	NA	NA	99.49	10.79	88.70	NA
MW-3	02/09/1993	3,300	83	21	5.6	6.1	<0.5	NA	NA	NA	NA	NA	NA	99.49	9.35	90.14	NA
MW-3	06/16/1993	3,500 e	NA	66	6	<0.5	<0.5	NA	NA	NA	NA	NA	NA	99.49	9.56	89.93	NA
MW-3	08/24/1993	3,400 e	NA	110	<5	<5	<5	NA	NA	NA	NA	NA	NA	99.49	10.51	88.98	NA
MW-3	11/23/1993	3,000	NA	36	44	6.9	23	NA	NA	NA	NA	NA	NA	99.49	10.77	88.72	NA
MW-3	02/14/1994	4,700 g	NA	9.9	5.2	8.8	<5.0	NA	NA	NA	NA	NA	NA	99.49	9.61	89.88	NA
MW-3	05/25/1994	1,200	NA	<10	<10	<10	<10	NA	NA	NA	NA	NA	NA	99.49	10.00	89.49	NA
MW-3	08/04/1994	2,600	NA	29	<5	14	11	NA	NA	NA	NA	NA	NA	99.49	10.63	88.86	NA
MW-3	11/08/1994	2,600	NA	5.5	1.5	1.9	0.9	NA	NA	NA	NA	NA	NA	99.49	11.02	88.47	NA
MW-3	02/01/1995	4,600	NA	27	1.2	3.2	2.5	NA	NA	NA	NA	NA	NA	99.49	8.31	91.18	NA
MW-3	05/04/1995	1,800	NA	140	11	11	16	NA	NA	NA	NA	NA	NA	99.49	8.70	90.79	NA
MW-3	05/16/1997	NA	NA	NA	NA	NA	NA	NA	NA	NA	NA	NA	NA	99.49	10.30	89.19	NA
MW-3	11/03/1997	NA	NA	NA	NA	NA	NA	NA	NA	NA	NA	NA	NA	99.49	10.52	88.97	NA
MW-3	06/05/1998	NA	NA	NA	NA	NA	NA	NA	NA	NA	NA	NA	NA	99.49	9.18	90.31	NA

WELL CONCENTRATIONS
Shell-Branded Service Station
630 High Street
Oakland, CA

Well ID	Date	TPPH (ug/L)	TEPH (ug/L)	B (ug/L)	T (ug/L)	E (ug/L)	X (ug/L)	MTBE 8020 (ug/L)	MTBE 8260 (ug/L)	DIPE (ug/L)	ETBE (ug/L)	TAME (ug/L)	TBA (ug/L)	TOC (MSL)	Depth to Water (ft.)	GW Elevation (MSL)	DO Reading (ppm)
MW-3	11/06/1998	NA	NA	NA	NA	NA	NA	NA	NA	NA	NA	NA	NA	99.49	11.00	88.49	NA
MW-3	06/07/1999	NA	NA	NA	NA	NA	NA	NA	NA	NA	NA	NA	NA	99.49	10.93	88.56	NA
MW-3	08/27/1999	8,600	NA	2,410	135	279	1,390	26,400	29,500	NA	NA	NA	NA	99.49	10.23	89.26	0.8/0.7
MW-3	11/11/1999	NA	NA	NA	NA	NA	NA	NA	NA	NA	NA	NA	NA	99.49	10.46	89.03	NA
MW-3	04/26/2000	7,100	NA	1,310	573	89.2	376	35,000	38,000	NA	NA	NA	NA	99.49	9.45	90.04	2.42/2.63
MW-3	11/02/2000	4,750	NA	1,210	29.3	50.5	125	8,750	8,960	NA	NA	NA	NA	99.49	10.05	89.44	2.0/2.5
MW-3	05/31/2001	5,400	NA	860	<20	29	<20	NA	10,000	NA	NA	NA	NA	99.49	10.38	89.11	1.8/2.0
MW-3	11/19/2001	3,200	NA	440	7.8	8.6	23	NA	3,400	NA	NA	NA	NA	99.49	10.29	89.20	3.1/1.5
MW-3	01/29/2002	2,900	NA	370	<20	<20	57	NA	5,400	NA	NA	NA	NA	99.49	9.07	90.42	5.2/3.8
MW-3	06/05/2002	3,500	NA	370	<10	<10	<10	NA	4,700	NA	NA	NA	NA	99.49	10.03	89.46	NA
MW-3	07/31/2002	4,100	NA	290	<5.0	<5.0	<5.0	NA	2,100	NA	NA	NA	NA	12.12	10.32	1.80	NA
MW-3	12/26/2002	1,500	NA	130	<2.5	<2.5	<2.5	NA	1,300	NA	NA	NA	NA	12.12	8.24	3.88	NA
MW-3	01/30/2003	2,300	NA	220	8.0	<5.0	<5.0	NA	1,800	NA	NA	NA	NA	12.12	9.94	2.18	NA
MW-3	05/13/2003	3,800	1,000 d	230	<10	<10	<20	NA	2,000	NA	NA	NA	NA	12.12	9.53	2.59	NA
MW-3	07/29/2003	5,000	NA	200	<10	<10	<20	NA	1,300	NA	NA	NA	NA	12.12	10.04	2.08	NA
MW-3	11/25/2003	3,100	NA	18	<5.0	7.2	<10	NA	690	NA	NA	NA	NA	12.12	10.34	1.78	NA
MW-3	02/12/2004	2,400	NA	20	<5.0	<5.0	<10	NA	780	NA	NA	NA	NA	12.12	9.75	2.37	NA
MW-3	04/30/2004	2,500	NA	29	<5.0	<5.0	<10	NA	800	NA	NA	NA	NA	12.12	9.78	2.34	NA
MW-3	08/23/2004	4,300	NA	7.5	<5.0	<5.0	<10	NA	530	<20	<20	<20	1,000	12.12	10.30	1.82	NA
MW-3	11/08/2004	4,200	NA	8.9	<5.0	5.7	<10	NA	390	NA	NA	NA	NA	12.12	9.82	2.30	NA
MW-3	02/02/2005	4,400	NA	14	<2.5	<2.5	8.2	NA	320	NA	NA	NA	NA	12.12	9.35	2.77	NA
MW-3	05/09/2005	2,800	NA	19	<5.0	<5.0	<10	NA	320	NA	NA	NA	NA	12.12	8.97	3.15	NA
MW-3	08/04/2005	1,900 n	NA	<5.0	<5.0	<5.0	<10	NA	190	<20	<20	<20	1,900	12.12	9.91	2.21	NA
MW-4	01/29/1991	2,600	1,300	83	<0.5	<0.5	110	NA	NA	NA	NA	NA	NA	99.24	10.76	88.48	NA
MW-4	04/30/1991	2,600	750	22	4	7	17	NA	NA	NA	NA	NA	NA	99.24	9.45	89.79	NA
MW-4	07/22/1991	4,300	1,200	120	<0.5	<0.5	10	NA	NA	NA	NA	NA	NA	99.24	10.34	88.90	NA
MW-4	02/21/1992	2,000	8,300 b	31	6.3	3.5	6.6	NA	NA	NA	NA	NA	NA	99.24	7.60	91.64	NA

WELL CONCENTRATIONS
Shell-Branded Service Station
630 High Street
Oakland, CA

Well ID	Date	TPPH (ug/L)	TEPH (ug/L)	B (ug/L)	T (ug/L)	E (ug/L)	X (ug/L)	MTBE 8020 (ug/L)	MTBE 8260 (ug/L)	DIPE (ug/L)	ETBE (ug/L)	TAME (ug/L)	TBA (ug/L)	TOC (MSL)	Depth to Water (ft.)	GW Elevation (MSL)	DO Reading (ppm)
MW-4	05/22/1992	3,600	3,400 b,c	55	5	3	10	NA	NA	NA	NA	NA	NA	99.24	9.90	89.34	NA
MW-4	07/07/1992	NA	NA	NA	NA	NA	NA	NA	NA	NA	NA	NA	NA	99.24	10.02	89.22	NA
MW-4	08/20/1992	3,100	3,400	100	45	14	45	NA	NA	NA	NA	NA	NA	99.24	10.32	88.92	NA
MW-4	11/18/1992	2,200	1,400	32	12	4.2	24	NA	NA	NA	NA	NA	NA	99.24	10.51	88.73	NA
MW-4	02/09/1993	1,500	180	1.1	<0.5	<0.5	<0.5	NA	NA	NA	NA	NA	NA	99.24	8.13	91.11	NA
MW-4	06/16/1993	1,100	NA	120	47	5.1	19	NA	NA	NA	NA	NA	NA	99.24	9.60	89.64	1.86/4.82 k
MW-4	08/24/1993	2,700	NA	46	11	25	0.97	NA	NA	NA	NA	NA	NA	99.24	10.05	89.19	1.46/1.27 k
MW-4	11/23/1993	2,500	NA	23	5.7	3.7	16	NA	NA	NA	NA	NA	NA	99.24	10.25	89.99	5.29/6.59 k
MW-4	02/14/1994	1,500	NA	12	7.8	<2.5	<2.5	NA	NA	NA	NA	NA	NA	99.24	8.83	90.41	2.1/1.9 k
MW-4	05/25/1994	810	NA	20	<2	<2	4	NA	NA	NA	NA	NA	NA	99.24	9.64	89.60	NA
MW-4	08/04/1994	2,300	NA	99	15	6.3	24	NA	NA	NA	NA	NA	NA	99.24	10.62	88.62	NA
MW-4	11/08/1994	<50	NA	<0.5	<0.5	<0.5	<0.5	NA	NA	NA	NA	NA	NA	99.24	9.28	89.96	NA
MW-4	02/01/1995	960	NA	5.6	2.2	2.6	2.8	NA	NA	NA	NA	NA	NA	99.24	6.52	92.72	NA
MW-4	05/04/1995	960	NA	20	4.7	3.7	5.6	NA	NA	NA	NA	NA	NA	99.24	8.40	90.84	NA
MW-4	05/16/1997	NA	NA	NA	NA	NA	NA	NA	NA	NA	NA	NA	NA	99.24	9.35	89.89	NA
MW-4	11/03/1997	NA	NA	NA	NA	NA	NA	NA	NA	NA	NA	NA	NA	99.24	10.17	89.07	NA
MW-4	06/05/1998	NA	NA	NA	NA	NA	NA	NA	NA	NA	NA	NA	NA	99.24	8.85	90.39	NA
MW-4	11/06/1998	NA	NA	NA	NA	NA	NA	NA	NA	NA	NA	NA	NA	99.24	10.17	89.07	NA
MW-4	06/07/1999	NA	NA	NA	NA	NA	NA	NA	NA	NA	NA	NA	NA	99.24	11.06	88.18	NA
MW-4	08/27/1999	1,520	NA	32.8	6.25	<2.50	5.65	61.5	<2.00	NA	NA	NA	NA	99.24	10.25	88.99	1.0/1.4
MW-4	11/11/1999	NA	NA	NA	NA	NA	NA	NA	NA	NA	NA	NA	NA	99.24	10.11	89.13	NA
MW-4	04/26/2000	NA	NA	NA	NA	NA	NA	NA	NA	NA	NA	NA	NA	99.24	9.18	90.06	NA
MW-4	11/02/2000	NA	NA	NA	NA	NA	NA	NA	NA	NA	NA	NA	NA	99.24	9.72	89.52	NA
MW-4	05/31/2001	NA	NA	NA	NA	NA	NA	NA	NA	NA	NA	NA	NA	99.24	9.29	89.95	NA
MW-4	11/19/2001	NA	NA	NA	NA	NA	NA	NA	NA	NA	NA	NA	NA	99.24	9.98	89.26	NA
MW-4	01/29/2002	NA	NA	NA	NA	NA	NA	NA	NA	NA	NA	NA	NA	99.24	9.12	90.12	NA
MW-4	06/05/2002	NA	NA	NA	NA	NA	NA	NA	NA	NA	NA	NA	NA	99.24	10.09	89.15	NA
MW-4	07/31/2002	NA	NA	NA	NA	NA	NA	NA	NA	NA	NA	NA	NA	11.90	10.30	1.60	NA

WELL CONCENTRATIONS
Shell-Branded Service Station
630 High Street
Oakland, CA

Well ID	Date	TPPH (ug/L)	TEPH (ug/L)	B (ug/L)	T (ug/L)	E (ug/L)	X (ug/L)	MTBE 8020 (ug/L)	MTBE 8260 (ug/L)	DIPE (ug/L)	ETBE (ug/L)	TAME (ug/L)	TBA (ug/L)	TOC (MSL)	Depth to Water (ft.)	GW Elevation (MSL)	DO Reading (ppm)
---------	------	----------------	----------------	-------------	-------------	-------------	-------------	------------------------	------------------------	----------------	----------------	----------------	---------------	--------------	----------------------------	--------------------------	------------------------

MW-4	12/26/2002	NA	NA	NA	NA	NA	NA	NA	NA	NA	NA	NA	NA	11.90	7.22	4.68	NA
MW-4	01/30/2003	NA	NA	NA	NA	NA	NA	NA	NA	NA	NA	NA	NA	11.90	9.02	2.88	NA
MW-4	05/13/2003	NA	NA	NA	NA	NA	NA	NA	NA	NA	NA	NA	NA	11.90	8.82	3.08	NA
MW-4	07/29/2003	NA	NA	NA	NA	NA	NA	NA	NA	NA	NA	NA	NA	11.90	9.88	2.02	NA
MW-4	11/25/2003	NA	NA	NA	NA	NA	NA	NA	NA	NA	NA	NA	NA	11.90	9.84	2.06	NA
MW-4	02/12/2004	NA	NA	NA	NA	NA	NA	NA	NA	NA	NA	NA	NA	11.90	9.08	2.82	NA
MW-4	04/30/2004	NA	NA	NA	NA	NA	NA	NA	NA	NA	NA	NA	NA	11.90	9.62	2.28	NA
MW-4	08/23/2004	NA	NA	NA	NA	NA	NA	NA	NA	NA	NA	NA	NA	11.90	9.90	2.00	NA
MW-4	11/08/2004	NA	NA	NA	NA	NA	NA	NA	NA	NA	NA	NA	NA	11.90	9.54	2.36	NA
MW-4	02/02/2005	NA	NA	NA	NA	NA	NA	NA	NA	NA	NA	NA	NA	11.90	8.68	3.22	NA
MW-4	05/09/2005	NA	NA	NA	NA	NA	NA	NA	NA	NA	NA	NA	NA	11.90	8.23	3.67	NA
MW-4	08/04/2005	NA	NA	NA	NA	NA	NA	NA	NA	NA	NA	NA	NA	11.90	9.31	2.59	NA

MW-5	01/29/1991	3,100	720	86	<0.5	24	28	NA	NA	NA	NA	NA	NA	100.08	11.72	88.36	NA
MW-5	04/30/1991	<50	90	46	<0.5	9	9	NA	NA	NA	NA	NA	NA	100.08	10.45	89.63	NA
MW-5	07/22/1991	1,700	300	23	<0.5	6,700	10,000	NA	NA	NA	NA	NA	NA	100.08	11.43	88.65	NA
MW-5	02/21/1992	240	180 h	1	<0.5	<0.5	1	NA	NA	NA	NA	NA	NA	100.08	9.24	90.84	NA
MW-5	05/22/1992	6,200	7,100 b,c	6	95	56	99	NA	NA	NA	NA	NA	NA	100.08	10.97	89.11	NA
MW-5	07/07/1992	NA	NA	NA	NA	NA	NA	NA	NA	NA	NA	NA	NA	100.08	10.98	89.10	NA
MW-5	08/20/1992	7,400	120 b	56	95	91	150	NA	NA	NA	NA	NA	NA	100.08	11.14	88.94	NA
MW-5	11/18/1992	3,300	320 b	27	<12.5	20	470	NA	NA	NA	NA	NA	NA	100.08	11.21	88.87	NA
MW-5	02/09/1993	160	<50	<0.5	<0.5	<0.5	<0.5	NA	NA	NA	NA	NA	NA	100.08	10.01	90.07	NA
MW-5	06/16/1993	140	NA	0.8	<0.5	<0.5	<0.5	NA	NA	NA	NA	NA	NA	100.08	11.05	89.03	1.53/2.72 k
MW-5	08/24/1993	1,000	NA	7.9	<1	2.2	<1.5	NA	NA	NA	NA	NA	NA	100.08	11.32	88.76	2.69/1.41 k
MW-5	11/23/1993	2,000	NA	67	15	11	33	NA	NA	NA	NA	NA	NA	100.08	11.35	88.73	8.20/3.09 k
MW-5	02/14/1994	660	NA	1.3	<0.5	0.5	0.7	NA	NA	NA	NA	NA	NA	100.08	10.34	89.74	2.0/1.9 k
MW-5	05/25/1994	670	NA	0.65	<0.5	2.6	<0.5	NA	NA	NA	NA	NA	NA	100.08	10.54	89.54	NA
MW-5	08/04/1994	700	NA	5	<0.5	1.2	<0.5	NA	NA	NA	NA	NA	NA	100.08	11.50	88.58	NA

WELL CONCENTRATIONS
Shell-Branded Service Station
630 High Street
Oakland, CA

Well ID	Date	TPPH (ug/L)	TEPH (ug/L)	B (ug/L)	T (ug/L)	E (ug/L)	X (ug/L)	MTBE 8020 (ug/L)	MTBE 8260 (ug/L)	DIPE (ug/L)	ETBE (ug/L)	TAME (ug/L)	TBA (ug/L)	TOC (MSL)	Depth to Water (ft.)	GW Elevation (MSL)	DO Reading (ppm)
MW-5	11/08/1994	810	NA	4.2	<0.5	1.5	0.8	NA	NA	NA	NA	NA	NA	100.08	11.24	88.84	NA
MW-5	02/01/1995	110	NA	7	<0.5	<0.5	<0.5	NA	NA	NA	NA	NA	NA	100.08	9.05	91.03	NA
MW-5	05/04/1995	260	NA	3.1	1.3	2	1.5	NA	NA	NA	NA	NA	NA	100.08	10.35	89.73	NA
MW-5	05/16/1997	440	NA	2.4	3.1	1.6	3.3	7.1	NA	NA	NA	NA	NA	100.08	11.21	88.87	2.9
MW-5	11/03/1997	1,400	NA	34	<2.5	2.8	4.4	33	NA	NA	NA	NA	NA	100.08	11.43	88.65	3.0/1.2 k
MW-5	06/05/1998	230	NA	3.6	0.5	<0.50	1.3	34	NA	NA	NA	NA	NA	100.08	10.35	89.73	3.2/1.4 k
MW-5	11/06/1998	1,800	NA	29	<0.50	3.8	7.1	26	NA	NA	NA	NA	NA	100.08	11.89	88.19	2.6/3.0
MW-5	06/07/1999	<50.0	NA	<0.500	<0.500	<0.500	<0.500	19.5	NA	NA	NA	NA	NA	100.08	10.28	89.80	NA
MW-5	06/22/1999	NA	NA	NA	NA	NA	NA	NA	NA	NA	NA	NA	NA	100.08	10.74	89.34	0.6
MW-5	08/27/1999	254	NA	5.09	1.08	<0.500	<0.500	9.97	12.0	NA	NA	NA	NA	100.08	11.01	89.07	NA
MW-5	11/11/1999	549	NA	16.4	3.29	2.18	3.16	18.2	NA	NA	NA	NA	NA	100.08	11.33	88.75	2.3/2.7
MW-5	04/26/2000	338	NA	0.787	2.30	<0.500	3.01	21.7	NA	NA	NA	NA	NA	100.08	10.32	89.76	1.99/3.01
MW-5	11/02/2000	507	NA	0.659	2.39	2.70	3.88	20.0	NA	NA	NA	NA	NA	100.08	10.75	89.33	4.0/2.0
MW-5	05/31/2001	67	NA	<0.50	<0.50	<0.50	<0.50	NA	87	NA	NA	NA	NA	100.08	10.53	89.55	3.8/2.1
MW-5	11/19/2001	850	NA	2.8	1.4	2.3	8.5	NA	57	NA	NA	NA	NA	100.08	10.88	89.20	2.6/1.9
MW-5	01/29/2002	<50	NA	<0.50	<0.50	<0.50	<0.50	NA	95	NA	NA	NA	NA	100.08	9.95	90.13	5.5/3.6
MW-5	06/05/2002	140	NA	<0.50	<0.50	<0.50	<0.50	NA	36	NA	NA	NA	NA	100.08	10.73	89.35	NA
MW-5	07/31/2002	520	NA	1.1	2.0	<0.50	<0.50	NA	45	NA	NA	NA	NA	12.72	11.00	1.72	NA
MW-5	12/26/2002	1,300	NA	75	3.7	<2.0	310	NA	600	NA	NA	NA	NA	12.72	9.24	3.48	NA
MW-5	01/30/2003	<50	NA	0.73	<0.50	1.4	<0.50	NA	120	NA	NA	NA	NA	12.72	10.05	2.67	NA
MW-5	05/13/2003	210	100 d	<0.50	<0.50	<0.50	<1.0	NA	39	NA	NA	NA	NA	12.72	9.99	2.73	NA
MW-5	07/29/2003	490	NA	<0.50	<0.50	<0.50	<1.0	NA	45	NA	NA	NA	NA	12.72	10.82	1.90	NA
MW-5	11/25/2003	280 m	NA	<0.50	<0.50	<0.50	<1.0	NA	35	NA	NA	NA	NA	12.72	11.01	1.71	NA
MW-5	02/12/2004	710 m	NA	<0.50	<0.50	<0.50	<1.0	NA	49	NA	NA	NA	NA	12.72	10.13	2.59	NA
MW-5	04/30/2004	130 m	NA	<0.50	<0.50	<0.50	<1.0	NA	41	NA	NA	NA	NA	12.72	10.62	2.10	NA
MW-5	08/23/2004	610	NA	<0.50	<0.50	<0.50	<1.0	NA	43	NA	NA	NA	NA	12.72	10.42	2.30	NA
MW-5	11/08/2004	420	NA	<0.50	<0.50	<0.50	<1.0	NA	35	NA	NA	NA	NA	12.72	10.60	2.12	NA
MW-5	02/02/2005	510	NA	<0.50	<0.50	<0.50	<1.0	NA	20	NA	NA	NA	NA	12.72	9.80	2.92	NA

WELL CONCENTRATIONS
Shell-Branded Service Station
630 High Street
Oakland, CA

Well ID	Date	TPPH (ug/L)	TEPH (ug/L)	B (ug/L)	T (ug/L)	E (ug/L)	X (ug/L)	MTBE 8020 (ug/L)	MTBE 8260 (ug/L)	DIPE (ug/L)	ETBE (ug/L)	TAME (ug/L)	TBA (ug/L)	TOC (MSL)	Depth to Water (ft.)	GW Elevation (MSL)	DO Reading (ppm)
MW-5	05/09/2005	170	NA	<0.50	<0.50	<0.50	<1.0	NA	12	NA	NA	NA	NA	12.72	9.38	3.34	NA
MW-5	08/04/2005	290	NA	<0.50	<0.50	<0.50	<2.0	NA	19	NA	NA	NA	<60	12.72	10.72	2.00	NA
MW-6	01/29/1991	<50	860	<0.5	<0.5	<0.5	<0.5	NA	NA	NA	NA	NA	NA	98.56	10.23	88.33	NA
MW-6	04/30/1991	<50	1,100	<0.5	<0.5	<0.5	<0.5	NA	NA	NA	NA	NA	NA	98.56	9.15	89.41	NA
MW-6	07/22/1991	<50	1,200	<0.5	<0.5	<0.5	<0.5	NA	NA	NA	NA	NA	NA	98.56	10.10	88.46	NA
MW-6	02/21/1992	<50	60 d	<0.5	<0.5	<0.5	<0.5	NA	NA	NA	NA	NA	NA	98.56	7.15	91.41	NA
MW-6	05/22/1992	<50	650 c	<0.5	<0.5	<0.5	<0.5	NA	NA	NA	NA	NA	NA	98.56	9.55	89.01	NA
MW-6	07/07/1992	NA	NA	NA	NA	NA	NA	NA	NA	NA	NA	NA	NA	98.56	9.53	89.03	NA
MW-6	08/20/1992	140 e	510 c	<0.5	<0.5	<0.5	<0.5	NA	NA	NA	NA	NA	NA	98.56	9.84	88.72	NA
MW-6	11/18/1992	200 e	350	<0.5	<0.5	<0.5	<0.5	NA	NA	NA	NA	NA	NA	98.56	10.03	88.53	NA
MW-6	02/09/1993	14,000 e	NA	<0.5	<0.5	<0.5	<0.5	NA	NA	NA	NA	NA	NA	98.56	7.91	90.65	NA
MW-6	06/16/1993	5,700 e	NA	<0.5	22	<0.5	34	NA	NA	NA	NA	NA	NA	98.56	8.74	89.82	8.46/9.73 k
MW-6	08/24/1993	4,300 e	NA	<12.5	<12.5	<12.5	<12.5	NA	NA	NA	NA	NA	NA	98.56	9.66	88.90	2.15/1.52 k
MW-6	11/23/1993	3,300 e	NA	<12	<12	<12	<12	NA	NA	NA	NA	NA	NA	98.56	9.86	88.70	3.86/6.75 k
MW-6	02/14/1994	14,000 e	NA	<12.5	<12.5	<12.5	<12.5	NA	NA	NA	NA	NA	NA	98.56	8.27	90.29	2.3/5.2 k
MW-6	05/25/1994	<1,000 i	NA	<10	<10	<10	<10	NA	NA	NA	NA	NA	NA	98.56	8.89	89.67	NA
MW-6	08/04/1994	250 j	NA	<0.5	<0.5	<0.5	<0.5	NA	NA	NA	NA	NA	NA	98.56	10.10	88.46	NA
MW-6	11/08/1994	4,600 e	NA	<0.5	<0.5	<0.5	<0.5	NA	NA	NA	NA	NA	NA	98.56	8.98	89.58	NA
MW-6	02/01/1995	710	NA	<0.5	<0.5	<0.5	<0.5	NA	NA	NA	NA	NA	NA	98.56	7.07	91.49	NA
MW-6	05/04/1995	<50	NA	<0.5	<0.5	<0.5	<0.5	NA	NA	NA	NA	NA	NA	98.56	8.56	90.00	NA
MW-6	05/16/1997	<500	NA	<5.0	<5.0	<5.0	<5.0	1,700	NA	NA	NA	NA	NA	98.56	9.57	88.99	6.2
MW-6	11/03/1997	<500	NA	<5.0	<5.0	<5.0	<5.0	990	NA	NA	NA	NA	NA	98.56	9.76	88.80	1.4/1.0 k
MW-6	06/05/1998	<50	NA	<0.50	<0.50	<0.50	<0.50	590	NA	NA	NA	NA	NA	98.56	8.50	90.06	1.5/1.1 k
MW-6	11/06/1998	<250	NA	<2.5	<2.5	<2.5	<2.5	810	NA	NA	NA	NA	NA	98.56	10.00	88.56	2.0/1.4
MW-6	06/07/1999	<50.0	NA	<0.500	<0.500	<0.500	<0.500	71.5	NA	NA	NA	NA	NA	98.56	9.35	89.21	NA
MW-6	06/22/1999	NA	NA	NA	NA	NA	NA	NA	NA	NA	NA	NA	NA	98.56	9.20	89.36	1.9
MW-6	08/27/1999	<50.0	NA	<0.500	<0.500	<0.500	<0.500	197	276	NA	NA	NA	NA	98.56	9.52	89.04	1.5/7.8

WELL CONCENTRATIONS
Shell-Branded Service Station
630 High Street
Oakland, CA

Well ID	Date	TPPH (ug/L)	TEPH (ug/L)	B (ug/L)	T (ug/L)	E (ug/L)	X (ug/L)	MTBE 8020 (ug/L)	MTBE 8260 (ug/L)	DIPE (ug/L)	ETBE (ug/L)	TAME (ug/L)	TBA (ug/L)	TOC (MSL)	Depth to Water (ft.)	GW Elevation (MSL)	DO Reading (ppm)
---------	------	----------------	----------------	-------------	-------------	-------------	-------------	------------------------	------------------------	----------------	----------------	----------------	---------------	--------------	----------------------------	--------------------------	------------------------

MW-6	11/11/1999	<50.0	NA	<0.500	<0.500	<0.500	<0.500	212	NA	NA	NA	NA	NA	98.56	9.87	88.69	1.4/1.7
MW-6	04/26/2000	<50.0	NA	<0.500	<0.500	<0.500	<0.500	236	NA	NA	NA	NA	NA	98.56	9.13	89.43	1.93/2.90
MW-6	11/02/2000	<50.0	NA	<0.500	<0.500	<0.500	<0.500	497	NA	NA	NA	NA	NA	98.56	9.13	89.43	2.5/3.5
MW-6	05/31/2001	<2,000	NA	<20	<20	<20	<20	NA	5,400	NA	NA	NA	NA	98.56	9.22	89.34	1.8/2.1
MW-6	11/19/2001	<500	NA	5.0	<5.0	<5.0	18	NA	2,600	NA	NA	NA	NA	98.56	9.48	89.08	2.5/1.9
MW-6	01/29/2002	<200	NA	<2.0	<2.0	<2.0	<2.0	NA	1,000	NA	NA	NA	NA	98.56	8.12	90.44	5.6/4.3
MW-6	06/05/2002	<100	NA	<1.0	<1.0	<1.0	<1.0	NA	650	NA	NA	NA	NA	98.56	9.58	88.98	NA
MW-6	07/31/2002	<200	NA	<2.0	<2.0	<2.0	<2.0	NA	860	NA	NA	NA	NA	11.21	9.90	1.31	NA
MW-6	12/26/2002	<50	NA	<0.50	<0.50	<0.50	<0.50	NA	200	NA	NA	NA	NA	11.21	7.13	4.08	NA
MW-6	01/30/2003	<50	NA	<0.50	<0.50	<0.50	<0.50	NA	57	NA	NA	NA	NA	11.21	8.11	3.10	NA
MW-6	05/13/2003	<50	180 d	<0.50	<0.50	<0.50	<1.0	NA	40	NA	NA	NA	NA	11.21	8.69	2.52	NA
MW-6	07/29/2003	<50	NA	<0.50	<0.50	<0.50	<1.0	NA	39	NA	NA	NA	NA	11.21	9.52	1.69	NA
MW-6	11/25/2003	<50	NA	<0.50	<0.50	<0.50	<1.0	NA	44	NA	NA	NA	NA	11.21	9.42	1.79	NA
MW-6	02/12/2004	<50	NA	<0.50	<0.50	<0.50	<1.0	NA	40	NA	NA	NA	NA	11.21	8.86	2.35	NA
MW-6	04/30/2004	<50	NA	<0.50	<0.50	<0.50	<1.0	NA	41	NA	NA	NA	NA	11.21	9.41	1.80	NA
MW-6	08/23/2004	<50	NA	<0.50	<0.50	<0.50	<1.0	NA	43	<2.0	<2.0	<2.0	<5.0	11.21	9.67	1.54	NA
MW-6	11/08/2004	<50	NA	<0.50	<0.50	<0.50	<1.0	NA	34	NA	NA	NA	NA	11.21	8.91	2.30	NA
MW-6	02/02/2005	<50	NA	<0.50	<0.50	<0.50	<1.0	NA	25	NA	NA	NA	NA	11.21	8.50	2.71	NA
MW-6	05/09/2005	<50	NA	<0.50	<0.50	<0.50	<1.0	NA	18	NA	NA	NA	NA	11.21	8.10	3.11	NA
MW-6	08/04/2005	<50	NA	<0.50	<0.50	<0.50	<1.0	NA	23	<2.0	<2.0	<2.0	<5.0	11.21	8.92	2.29	NA

MW-7	01/29/1991	<50	<50	<0.5	<0.5	<0.5	<0.5	NA	NA	NA	NA	NA	NA	97.53	8.91	88.62	NA
MW-7	04/30/1991	<50	<50	<0.5	<0.5	<0.5	<0.5	NA	NA	NA	NA	NA	NA	97.53	8.38	89.15	NA
MW-7	07/22/1991	<50	<50	<0.5	<0.5	<0.5	<0.5	NA	NA	NA	NA	NA	NA	97.53	9.13	88.40	NA
MW-7	02/21/1992	<50	NA	<0.5	<0.5	<0.5	<0.5	NA	NA	NA	NA	NA	NA	97.53	6.87	90.66	NA
MW-7	05/22/1992	<50	NA	<0.5	<0.5	<0.5	<0.5	NA	NA	NA	NA	NA	NA	97.53	8.08	89.45	NA
MW-7	07/07/1992	NA	NA	NA	NA	NA	NA	NA	NA	NA	NA	NA	NA	97.53	8.82	88.71	NA
MW-7	08/20/1992	<50	NA	<0.5	<0.5	<0.5	<0.5	NA	NA	NA	NA	NA	NA	97.53	8.89	88.64	NA

WELL CONCENTRATIONS
Shell-Branded Service Station
630 High Street
Oakland, CA

Well ID	Date	TPPH (ug/L)	TEPH (ug/L)	B (ug/L)	T (ug/L)	E (ug/L)	X (ug/L)	MTBE 8020 (ug/L)	MTBE 8260 (ug/L)	DIPE (ug/L)	ETBE (ug/L)	TAME (ug/L)	TBA (ug/L)	TOC (MSL)	Depth to Water (ft.)	GW Elevation (MSL)	DO Reading (ppm)
MW-7	11/18/1992	<50	NA	<0.5	<0.5	<0.5	<0.5	NA	NA	NA	NA	NA	NA	97.53	9.54	87.99	NA
MW-7	02/09/1993	72	NA	<0.5	<0.5	<0.5	<0.5	NA	NA	NA	NA	NA	NA	97.53	7.84	89.69	NA
MW-7	06/16/1993	<50	NA	<0.5	<0.5	<0.5	<0.5	NA	NA	NA	NA	NA	NA	97.53	7.80	89.73	NA
MW-7	08/24/1993	<50	NA	<0.5	<0.5	<0.5	<0.5	NA	NA	NA	NA	NA	NA	97.53	8.51	89.02	NA
MW-7	11/23/1993	<50	NA	<0.5	<0.5	<0.5	<0.5	NA	NA	NA	NA	NA	NA	97.53	8.70	88.83	NA
MW-7	02/14/1994	<50	NA	<0.5	<0.5	<0.5	<0.5	NA	NA	NA	NA	NA	NA	97.53	7.52	90.01	NA
MW-7	05/25/1994	<50	NA	<0.5	0.63	<0.5	0.93	NA	NA	NA	NA	NA	NA	97.53	9.04	88.49	NA
MW-7	08/04/1994	NA	NA	NA	NA	NA	NA	NA	NA	NA	NA	NA	NA	97.53	9.80	87.83	NA
MW-7	11/08/1994	<50	NA	<0.5	<0.5	<0.5	<0.5	NA	NA	NA	NA	NA	NA	97.53	8.45	89.08	NA
MW-7	02/01/1995	NA	NA	NA	NA	NA	NA	NA	NA	NA	NA	NA	NA	97.53	5.51	92.02	NA
MW-7	05/04/1995	<50	NA	<0.5	<0.5	<0.5	<0.5	NA	NA	NA	NA	NA	NA	97.53	8.34	89.19	NA
MW-7	05/16/1997	<50	NA	<0.50	<0.50	<0.50	<0.50	2.7	NA	NA	NA	NA	NA	97.53	8.80	88.73	2.8
MW-7	11/03/1997	<50	NA	<0.50	<0.50	<0.50	<0.50	<2.5	NA	NA	NA	NA	NA	97.53	8.95	88.58	1.6/1.2 k
MW-7	06/05/1998	<50	NA	<0.50	<0.50	<0.50	<0.50	4.3	NA	NA	NA	NA	NA	97.53	7.75	89.78	1.5/1.1 k
MW-7	11/06/1998	<50	NA	<0.50	<0.50	<0.50	<0.50	4.5	NA	NA	NA	NA	NA	97.53	9.20	88.33	4.1/2.2
MW-7	06/07/1999	<50.0	NA	<0.500	<0.500	<0.500	<0.500	<2.50	NA	NA	NA	NA	NA	97.53	8.39	89.14	NA
MW-7	06/22/1999	NA	NA	NA	NA	NA	NA	NA	NA	NA	NA	NA	NA	97.53	8.43	89.10	0.4
MW-7	06/22/1999	NA	NA	NA	NA	NA	NA	NA	NA	NA	NA	NA	NA	97.53	8.43	89.10	0.4
MW-7	08/27/1999	<50.0	NA	<0.500	<0.500	<0.500	<0.500	<5.00	4.33	NA	NA	NA	NA	97.53	8.82	88.71	1.3/1.9
MW-7	11/11/1999	<50.0	NA	<0.500	<0.500	<0.500	<0.500	4.30	NA	NA	NA	NA	NA	97.53	8.64	88.89	1.1/1.0
MW-7	04/26/2000	<50.0	NA	<0.500	<0.500	<0.500	<0.500	6.59	NA	NA	NA	NA	NA	97.53	8.31	89.22	1.09/2.41
MW-7	11/02/2000	<50.0	NA	<0.500	<0.500	<0.500	<0.500	7.38	NA	NA	NA	NA	NA	97.53	7.80	89.73	4.0/4.0
MW-7	05/31/2001	<50	NA	<0.50	1.4	<0.50	4.6	NA	5.3	NA	NA	NA	NA	97.53	7.61	89.92	3.2/3.3
MW-7	11/19/2001	<50	NA	0.64	0.86	1.6	6.1	NA	7.3	NA	NA	NA	NA	97.53	9.11	88.42	2.6/2.1
MW-7	01/29/2002	<50	NA	0.70	<0.50	<0.50	<0.50	NA	<5.0	NA	NA	NA	NA	97.53	7.85	89.68	2.1/2.3
MW-7	06/05/2002	<50	NA	<0.50	<0.50	<0.50	<0.50	NA	<5.0	NA	NA	NA	NA	97.53	8.68	88.85	NA
MW-7	07/31/2002	<50	NA	<0.50	<0.50	<0.50	<0.50	NA	<5.0	NA	NA	NA	NA	10.17	8.94	1.23	NA
MW-7	12/26/2002	<50	NA	<0.50	<0.50	<0.50	<0.50	NA	<5.0	NA	NA	NA	NA	10.17	6.05	4.12	NA

WELL CONCENTRATIONS
Shell-Branded Service Station
630 High Street
Oakland, CA

Well ID	Date	TPPH (ug/L)	TEPH (ug/L)	B (ug/L)	T (ug/L)	E (ug/L)	X (ug/L)	MTBE 8020 (ug/L)	MTBE 8260 (ug/L)	DIPE (ug/L)	ETBE (ug/L)	TAME (ug/L)	TBA (ug/L)	TOC (MSL)	Depth to Water (ft.)	GW Elevation (MSL)	DO Reading (ppm)
MW-7	01/30/2003	<50	NA	<0.50	<0.50	<0.50	<0.50	NA	<5.0	NA	NA	NA	NA	10.17	7.38	2.79	NA
MW-7	05/13/2003	<50	85 d	<0.50	<0.50	<0.50	<1.0	NA	<5.0	NA	NA	NA	NA	10.17	7.74	2.43	NA
MW-7	07/29/2003	<50	NA	<0.50	<0.50	<0.50	<1.0	NA	2.3	NA	NA	NA	NA	10.17	8.45	1.72	NA
MW-7	11/25/2003	140	NA	<0.50	8.7	2.0	10	NA	2.0	NA	NA	NA	NA	10.17	8.47	1.70	NA
MW-7	02/12/2004	<50	NA	<0.50	<0.50	<0.50	<1.0	NA	2.8	NA	NA	NA	NA	10.17	7.63	2.54	NA
MW-7	04/30/2004	<50	NA	<0.50	<0.50	<0.50	<1.0	NA	2.2	NA	NA	NA	NA	10.17	9.29	0.88	NA
MW-7	08/23/2004	<50	NA	<0.50	<0.50	<0.50	<1.0	NA	1.9	<2.0	<2.0	<2.0	<5.0	10.17	8.68	1.49	NA
MW-7	11/08/2004	<50	NA	<0.50	<0.50	<0.50	<1.0	NA	1.7	NA	NA	NA	NA	10.17	8.19	1.98	NA
MW-7	02/02/2005	<50	NA	<0.50	<0.50	<0.50	<1.0	NA	1.9	NA	NA	NA	NA	10.17	7.65	2.52	NA
MW-7	05/09/2005	<50	NA	<0.50	<0.50	<0.50	<1.0	NA	1.0	NA	NA	NA	NA	10.17	7.20	2.97	NA
MW-7	08/04/2005	<50	NA	<0.50	<0.50	<0.50	<1.0	NA	1.0	<2.0	<2.0	<2.0	<5.0	10.17	7.95	2.22	NA
MW-8	01/29/1991	<50	<50	<0.5	<0.5	<0.5	<0.5	NA	NA	NA	NA	NA	NA	97.13	8.47	88.66	NA
MW-8	04/30/1991	<50	<50	<0.5	<0.5	<0.5	<0.5	NA	NA	NA	NA	NA	NA	97.13	7.64	89.49	NA
MW-8	07/22/1991	<50	<50	<0.5	<0.5	<0.5	<0.5	NA	NA	NA	NA	NA	NA	97.13	8.36	88.77	NA
MW-8	02/21/1992	<50	NA	<0.5	<0.5	<0.5	<0.5	NA	NA	NA	NA	NA	NA	97.13	6.54	90.59	NA
MW-8	05/22/1992	<50	NA	<0.5	<0.5	<0.5	<0.5	NA	NA	NA	NA	NA	NA	97.13	7.68	89.45	NA
MW-8	07/07/1992	NA	NA	NA	NA	NA	NA	NA	NA	NA	NA	NA	NA	97.13	8.16	88.97	NA
MW-8	08/20/1992	<50	NA	<0.5	<0.5	<0.5	<0.5	NA	NA	NA	NA	NA	NA	97.13	8.25	88.88	NA
MW-8	11/18/1992	<50	NA	<0.5	<0.5	<0.5	<0.5	NA	NA	NA	NA	NA	NA	97.13	8.32	88.81	NA
MW-8	02/09/1993	63	NA	<0.5	<0.5	<0.5	<0.5	NA	NA	NA	NA	NA	NA	97.13	5.58	91.55	NA
MW-8	06/16/1993	<50	NA	<0.5	<0.5	<0.5	<0.5	NA	NA	NA	NA	NA	NA	97.13	7.19	89.94	NA
MW-8	08/24/1993	<50	NA	<0.5	<0.5	<0.5	<0.5	NA	NA	NA	NA	NA	NA	97.13	7.98	89.15	NA
MW-8	11/23/1993	<50	NA	<0.5	<0.5	<0.5	<0.5	NA	NA	NA	NA	NA	NA	97.13	8.09	89.04	NA
MW-8	02/14/1994	<50	NA	<0.5	<0.5	<0.5	<0.5	NA	NA	NA	NA	NA	NA	97.13	9.42	87.71	NA
MW-8	05/25/1994	<50	NA	<0.5	1.1	<0.5	2.5	NA	NA	NA	NA	NA	NA	97.13	7.18	89.95	NA
MW-8	08/04/1994	NA	NA	NA	NA	NA	NA	NA	NA	NA	NA	NA	NA	97.13	8.51	88.62	NA
MW-8	11/08/1994	<50	NA	<0.5	<0.5	<0.5	<0.5	NA	NA	NA	NA	NA	NA	97.13	6.24	90.89	NA

WELL CONCENTRATIONS
Shell-Branded Service Station
630 High Street
Oakland, CA

Well ID	Date	TPPH (ug/L)	TEPH (ug/L)	B (ug/L)	T (ug/L)	E (ug/L)	X (ug/L)	MTBE 8020 (ug/L)	MTBE 8260 (ug/L)	DIPE (ug/L)	ETBE (ug/L)	TAME (ug/L)	TBA (ug/L)	TOC (MSL)	Depth to Water (ft.)	GW Elevation (MSL)	DO Reading (ppm)
MW-8	02/01/1995	NA	NA	NA	NA	NA	NA	NA	NA	NA	NA	NA	NA	97.13	3.94	93.19	NA
MW-8	05/04/1995	<50	NA	<0.5	<0.5	<0.5	<0.5	NA	NA	NA	NA	NA	NA	97.13	5.04	92.09	NA
MW-8	05/16/1997	NA	NA	NA	NA	NA	NA	NA	NA	NA	NA	NA	NA	97.13	7.65	89.48	NA
MW-8	11/03/1997	NA	NA	NA	NA	NA	NA	NA	NA	NA	NA	NA	NA	97.13	7.03	90.10	NA
MW-8	06/05/1998	NA	NA	NA	NA	NA	NA	NA	NA	NA	NA	NA	NA	97.13	6.47	90.66	NA
MW-8	11/06/1998	NA	NA	NA	NA	NA	NA	NA	NA	NA	NA	NA	NA	97.13	8.27	88.86	NA
MW-8	06/07/1999	NA	NA	NA	NA	NA	NA	NA	NA	NA	NA	NA	NA	97.13	8.69	88.44	NA
MW-8	08/27/1999	<50.0	NA	<0.500	<0.500	<0.500	<0.500	<5.00	<2.00	NA	NA	NA	NA	97.13	7.82	89.31	1.5/2.0
MW-8	11/11/1999	NA	NA	NA	NA	NA	NA	NA	NA	NA	NA	NA	NA	97.13	7.91	89.22	NA
MW-8	04/26/2000	NA	NA	NA	NA	NA	NA	NA	NA	NA	NA	NA	NA	97.13	7.10	90.03	NA
MW-8	11/02/2000	NA	NA	NA	NA	NA	NA	NA	NA	NA	NA	NA	NA	97.13	7.95	89.18	NA
MW-8	05/31/2001	NA	NA	NA	NA	NA	NA	NA	NA	NA	NA	NA	NA	97.13	7.22	89.91	NA
MW-8	11/19/2001	NA	NA	NA	NA	NA	NA	NA	NA	NA	NA	NA	NA	97.13	7.70	89.43	NA
MW-8	01/29/2002	NA	NA	NA	NA	NA	NA	NA	NA	NA	NA	NA	NA	97.13	6.64	90.49	NA
MW-8	06/05/2002	NA	NA	NA	NA	NA	NA	NA	NA	NA	NA	NA	NA	97.13	7.78	89.35	NA
MW-8	07/31/2002	NA	NA	NA	NA	NA	NA	NA	NA	NA	NA	NA	NA	9.75	8.24	1.51	NA
MW-8	12/26/2002	NA	NA	NA	NA	NA	NA	NA	NA	NA	NA	NA	NA	9.75	6.13	3.62	NA
MW-8	01/30/2003	NA	NA	NA	NA	NA	NA	NA	NA	NA	NA	NA	NA	9.75	6.48	3.27	NA
MW-8	05/13/2003	NA	NA	NA	NA	NA	NA	NA	NA	NA	NA	NA	NA	9.75	6.80	2.95	NA
MW-8	07/29/2003	NA	NA	NA	NA	NA	NA	NA	NA	NA	NA	NA	NA	9.75	7.75	2.00	NA
MW-8	11/25/2003	NA	NA	NA	NA	NA	NA	NA	NA	NA	NA	NA	NA	9.75	7.53	2.22	NA
MW-8	02/12/2004	NA	NA	NA	NA	NA	NA	NA	NA	NA	NA	NA	NA	9.75	6.65	3.10	NA
MW-8	04/30/2004	NA	NA	NA	NA	NA	NA	NA	NA	NA	NA	NA	NA	9.75	7.33	2.42	NA
MW-8	08/23/2004	NA	NA	NA	NA	NA	NA	NA	NA	NA	NA	NA	NA	9.75	7.95	1.80	NA
MW-8	11/08/2004	NA	NA	NA	NA	NA	NA	NA	NA	NA	NA	NA	NA	9.75	7.07	2.68	NA
MW-8	02/02/2005	NA	NA	NA	NA	NA	NA	NA	NA	NA	NA	NA	NA	9.75	6.50	3.25	NA
MW-8	05/09/2005	NA	NA	NA	NA	NA	NA	NA	NA	NA	NA	NA	NA	9.75	6.00	3.75	NA
MW-8	08/04/2005	NA	NA	NA	NA	NA	NA	NA	NA	NA	NA	NA	NA	9.75	6.52	3.23	NA

WELL CONCENTRATIONS
Shell-Branded Service Station
630 High Street
Oakland, CA

Well ID	Date	TPPH (ug/L)	TEPH (ug/L)	B (ug/L)	T (ug/L)	E (ug/L)	X (ug/L)	MTBE 8020 (ug/L)	MTBE 8260 (ug/L)	DIPE (ug/L)	ETBE (ug/L)	TAME (ug/L)	TBA (ug/L)	TOC (MSL)	Depth to Water (ft.)	GW Elevation (MSL)	DO Reading (ppm)
MW-9	01/29/1991	<50	<50	<0.5	<0.5	<0.5	<0.5	NA	NA	NA	NA	NA	NA	99.72	8.27	91.45	NA
MW-9	04/30/1991	<50	<50	0.6	<0.5	<0.5	1.1	NA	NA	NA	NA	NA	NA	99.72	7.62	92.10	NA
MW-9	07/22/1991	<50	<50	<0.5	<0.5	<0.5	<0.5	NA	NA	NA	NA	NA	NA	99.72	8.48	91.24	NA
MW-9	02/21/1992	<50	NA	<0.5	<0.5	<0.5	<0.5	NA	NA	NA	NA	NA	NA	99.72	6.91	92.81	NA
MW-9	05/22/1992	<50	NA	<0.5	<0.5	<0.5	<0.5	NA	NA	NA	NA	NA	NA	99.72	8.64	91.08	NA
MW-9	07/07/1992	NA	NA	NA	NA	NA	NA	NA	NA	NA	NA	NA	NA	99.72	7.55	92.17	NA
MW-9	08/20/1992	<50	NA	<0.5	<0.5	<0.5	<0.5	NA	NA	NA	NA	NA	NA	99.72	7.38	92.34	NA
MW-9	11/18/1992	<50	NA	<0.5	<0.5	<0.5	<0.5	NA	NA	NA	NA	NA	NA	99.72	10.17	89.55	NA
MW-9	02/09/1993	290	110	6	<0.5	<0.5	<0.5	NA	NA	NA	NA	NA	NA	99.72	6.89	92.83	NA
MW-9	06/16/1993	90 e	NA	<0.5	<0.5	<0.5	<0.5	NA	NA	NA	NA	NA	NA	99.72	8.74	90.98	1.51/2.17 k
MW-9	08/24/1993	50 e	NA	<0.5	<0.5	<0.5	<0.5	NA	NA	NA	NA	NA	NA	99.72	8.32	91.40	2.86/2.74 k
MW-9	11/23/1993	<50	NA	<0.5	<0.5	<0.5	<0.5	NA	NA	NA	NA	NA	NA	99.72	8.17	91.55	3.41/3.78 k
MW-9	02/14/1994	<50	NA	<0.5	<0.5	<0.5	<0.5	NA	NA	NA	NA	NA	NA	99.72	7.67	92.05	4.6/5.2 k
MW-9	05/25/1994	56	NA	1.3	4	1.4	8.3	NA	NA	NA	NA	NA	NA	99.72	7.89	91.83	NA
MW-9	08/04/1994	NA	NA	NA	NA	NA	NA	NA	NA	NA	NA	NA	NA	99.72	9.76	89.96	NA
MW-9	11/08/1994	<50	NA	<0.5	<0.5	<0.5	<0.5	NA	NA	NA	NA	NA	NA	99.72	7.75	91.97	NA
MW-9	02/01/1995	NA	NA	NA	NA	NA	NA	NA	NA	NA	NA	NA	NA	99.72	5.66	94.06	NA
MW-9	05/04/1995	<50	NA	<0.5	<0.5	<0.5	<0.5	NA	NA	NA	NA	NA	NA	99.72	7.40	92.32	NA
MW-9	05/16/1997	NA	NA	NA	NA	NA	NA	NA	NA	NA	NA	NA	NA	99.72	7.72	92.00	NA
MW-9	11/03/1997	NA	NA	NA	NA	NA	NA	NA	NA	NA	NA	NA	NA	99.72	6.93	92.79	NA
MW-9	06/05/1998	NA	NA	NA	NA	NA	NA	NA	NA	NA	NA	NA	NA	99.72	7.23	92.49	NA
MW-9	11/06/1998	NA	NA	NA	NA	NA	NA	NA	NA	NA	NA	NA	NA	99.72	9.91	89.81	NA
MW-9	06/07/1999	NA	NA	NA	NA	NA	NA	NA	NA	NA	NA	NA	NA	99.72	9.03	90.69	NA
MW-9	08/27/1999	<50.0	NA	<0.500	<0.500	<0.500	<0.500	<5.00	<2.00	NA	NA	NA	NA	99.72	7.45	92.27	3.5/4.3
MW-9	11/11/1999	NA	NA	NA	NA	NA	NA	NA	NA	NA	NA	NA	NA	99.72	7.40	92.32	NA
MW-9	04/26/2000	NA	NA	NA	NA	NA	NA	NA	NA	NA	NA	NA	NA	99.72	7.66	92.06	NA
MW-9	11/02/2000	NA	NA	NA	NA	NA	NA	NA	NA	NA	NA	NA	NA	99.72	8.41	91.31	NA

WELL CONCENTRATIONS
Shell-Branded Service Station
630 High Street
Oakland, CA

Well ID	Date	TPPH (ug/L)	TEPH (ug/L)	B (ug/L)	T (ug/L)	E (ug/L)	X (ug/L)	MTBE 8020 (ug/L)	MTBE 8260 (ug/L)	DIPE (ug/L)	ETBE (ug/L)	TAME (ug/L)	TBA (ug/L)	TOC (MSL)	Depth to Water (ft.)	GW Elevation (MSL)	DO Reading (ppm)
---------	------	----------------	----------------	-------------	-------------	-------------	-------------	------------------------	------------------------	----------------	----------------	----------------	---------------	--------------	----------------------------	--------------------------	------------------------

MW-9	05/31/2001	NA	NA	NA	NA	NA	NA	NA	NA	NA	NA	NA	NA	99.72	8.02	91.70	NA
MW-9	11/19/2001	NA	NA	NA	NA	NA	NA	NA	NA	NA	NA	NA	NA	99.72	8.40	91.32	NA
MW-9	01/29/2002	NA	NA	NA	NA	NA	NA	NA	NA	NA	NA	NA	NA	99.72	7.83	91.89	NA
MW-9	06/05/2002	NA	NA	NA	NA	NA	NA	NA	NA	NA	NA	NA	NA	99.72	8.34	91.38	NA
MW-9	07/31/2002	NA	NA	NA	NA	NA	NA	NA	NA	NA	NA	NA	NA	12.34	8.54	3.80	NA
MW-9	12/26/2002	NA	NA	NA	NA	NA	NA	NA	NA	NA	NA	NA	NA	12.34	7.12	5.22	NA
MW-9	01/30/2003	NA	NA	NA	NA	NA	NA	NA	NA	NA	NA	NA	NA	12.34	7.95	4.39	NA
MW-9	05/13/2003	NA	NA	NA	NA	NA	NA	NA	NA	NA	NA	NA	NA	12.34	7.58	4.76	NA
MW-9	07/29/2003	NA	NA	NA	NA	NA	NA	NA	NA	NA	NA	NA	NA	12.34	8.53	3.81	NA
MW-9	11/25/2003	NA	NA	NA	NA	NA	NA	NA	NA	NA	NA	NA	NA	12.34	8.67	3.67	NA
MW-9	02/12/2004	NA	NA	NA	NA	NA	NA	NA	NA	NA	NA	NA	NA	12.34	8.22	4.12	NA
MW-9	04/30/2004	NA	NA	NA	NA	NA	NA	NA	NA	NA	NA	NA	NA	12.34	8.35	3.99	NA
MW-9	08/23/2004	NA	NA	NA	NA	NA	NA	NA	NA	NA	NA	NA	NA	12.34	9.31	3.03	NA
MW-9	11/08/2004	NA	NA	NA	NA	NA	NA	NA	NA	NA	NA	NA	NA	12.34	8.60	3.74	NA
MW-9	02/02/2005	NA	NA	NA	NA	NA	NA	NA	NA	NA	NA	NA	NA	12.34	7.05	5.29	NA
MW-9	05/09/2005	NA	NA	NA	NA	NA	NA	NA	NA	NA	NA	NA	NA	12.34	6.62	5.72	NA
MW-9	08/04/2005	NA	NA	NA	NA	NA	NA	NA	NA	NA	NA	NA	NA	12.34	8.32	4.02	NA

MW-10	01/29/1991	<50	NA	<0.5	<0.5	<0.5	<0.5	NA	NA	NA	NA	NA	NA	98.99	10.81	88.18	NA
MW-10	04/30/1991	<50	460	<0.5	<0.5	<0.5	<0.5	NA	NA	NA	NA	NA	NA	98.99	8.79	90.20	NA
MW-10	07/22/1991	<50	<50	<0.5	<0.5	<0.5	<0.5	NA	NA	NA	NA	NA	NA	98.99	9.94	89.05	NA
MW-10	02/21/1992	<50	120	<0.5	<0.5	<0.5	<0.5	NA	NA	NA	NA	NA	NA	98.99	9.11	89.88	NA
MW-10	05/22/1992	<50	310	<0.5	<0.5	<0.5	<0.5	NA	NA	NA	NA	NA	NA	98.99	9.14	89.85	NA
MW-10	07/07/1992	NA	NA	NA	NA	NA	NA	NA	NA	NA	NA	NA	NA	98.99	9.87	89.12	NA
MW-10	08/20/1992	<50	460	<0.5	<0.5	<0.5	<0.5	NA	NA	NA	NA	NA	NA	98.99	9.30	89.69	NA
MW-10	11/18/1992	<50	470	<0.5	<0.5	<0.5	<0.5	NA	NA	NA	NA	NA	NA	98.99	10.21	88.78	NA
MW-10	02/09/1993	<50	NA	<0.5	<0.5	<0.5	<0.5	NA	NA	NA	NA	NA	NA	98.99	7.63	91.36	NA
MW-10	06/16/1993	<50	NA	<0.5	<0.5	<0.5	<0.5	NA	NA	NA	NA	NA	NA	98.99	8.57	90.42	NA

WELL CONCENTRATIONS
Shell-Branded Service Station
630 High Street
Oakland, CA

Well ID	Date	TPPH (ug/L)	TEPH (ug/L)	B (ug/L)	T (ug/L)	E (ug/L)	X (ug/L)	MTBE 8020 (ug/L)	MTBE 8260 (ug/L)	DIPE (ug/L)	ETBE (ug/L)	TAME (ug/L)	TBA (ug/L)	TOC (MSL)	Depth to Water (ft.)	GW Elevation (MSL)	DO Reading (ppm)
MW-10	08/24/1993	<50	NA	<0.5	<0.5	<0.5	<0.5	NA	NA	NA	NA	NA	NA	98.99	9.61	89.38	NA
MW-10	11/23/1993	<50	NA	<0.5	<0.5	<0.5	<0.5	NA	NA	NA	NA	NA	NA	98.99	10.10	88.89	NA
MW-10	02/14/1994	<50	NA	<0.5	<0.5	<0.5	<0.5	NA	NA	NA	NA	NA	NA	98.99	9.01	89.98	NA
MW-10	05/25/1994	<50	NA	<0.5	1.1	<0.5	1.4	NA	NA	NA	NA	NA	NA	98.99	8.84	90.15	NA
MW-10	08/04/1994	NA	NA	NA	NA	NA	NA	NA	NA	NA	NA	NA	NA	98.99	9.82	89.17	NA
MW-10	11/08/1994	<50	NA	<0.5	<0.5	<0.5	<0.5	NA	NA	NA	NA	NA	NA	98.99	9.40	89.59	NA
MW-10	02/01/1995	NA	NA	NA	NA	NA	NA	NA	NA	NA	NA	NA	NA	98.99	6.78	92.21	NA
MW-10	05/04/1995	NA	NA	NA	NA	NA	NA	NA	NA	NA	NA	NA	NA	98.99	7.00	91.99	NA
MW-10	05/16/1997	<50	NA	<0.5	<0.5	<0.5	<0.5	NA	NA	NA	NA	NA	NA	98.99	8.66	90.33	NA
MW-10	11/03/1997	NA	NA	NA	NA	NA	NA	NA	NA	NA	NA	NA	NA	98.99	9.37	89.62	NA
MW-10	06/05/1998	NA	NA	NA	NA	NA	NA	NA	NA	NA	NA	NA	NA	98.99	7.27	91.72	NA
MW-10	11/06/1998	NA	NA	NA	NA	NA	NA	NA	NA	NA	NA	NA	NA	98.99	9.48	89.51	NA
MW-10	06/07/1999	NA	NA	NA	NA	NA	NA	NA	NA	NA	NA	NA	NA	98.99	8.72	90.27	NA
MW-10	08/27/1999	<50.0	NA	<0.500	<0.500	<0.500	<0.500	<5.00	<2.00	NA	NA	NA	NA	98.99	8.62	90.37	1.6/1.6
MW-10	11/11/1999	NA	NA	NA	NA	NA	NA	NA	NA	NA	NA	NA	NA	98.99	8.55	90.44	NA
MW-10	04/26/2000	NA	NA	NA	NA	NA	NA	NA	NA	NA	NA	NA	NA	98.99	7.39	91.60	NA
MW-10	11/02/2000	NA	NA	NA	NA	NA	NA	NA	NA	NA	NA	NA	NA	98.99	8.26	90.73	NA
MW-10	05/31/2001	NA	NA	NA	NA	NA	NA	NA	NA	NA	NA	NA	NA	98.99	7.98	91.01	NA
MW-10	11/19/2001	NA	NA	NA	NA	NA	NA	NA	NA	NA	NA	NA	NA	98.99	9.34	89.65	NA
MW-10	01/29/2002	NA	NA	NA	NA	NA	NA	NA	NA	NA	NA	NA	NA	98.99	7.34	91.65	NA
MW-10	06/05/2002	NA	NA	NA	NA	NA	NA	NA	NA	NA	NA	NA	NA	98.99	8.11	90.88	NA
MW-10	07/31/2002	NA	NA	NA	NA	NA	NA	NA	NA	NA	NA	NA	NA	11.60	8.63	2.97	NA
MW-10	12/26/2002	NA	NA	NA	NA	NA	NA	NA	NA	NA	NA	NA	NA	11.60	8.50	3.10	NA
MW-10	01/30/2003	NA	NA	NA	NA	NA	NA	NA	NA	NA	NA	NA	NA	11.60	8.30	3.30	NA
MW-10	05/13/2003	NA	NA	NA	NA	NA	NA	NA	NA	NA	NA	NA	NA	11.60	8.17	3.43	NA
MW-10	07/29/2003	NA	NA	NA	NA	NA	NA	NA	NA	NA	NA	NA	NA	11.60	8.62	2.98	NA
MW-10	11/25/2003	NA	NA	NA	NA	NA	NA	NA	NA	NA	NA	NA	NA	11.60	9.24	2.36	NA
MW-10	02/12/2004	NA	NA	NA	NA	NA	NA	NA	NA	NA	NA	NA	NA	11.60	8.14	3.46	NA

WELL CONCENTRATIONS
Shell-Branded Service Station
630 High Street
Oakland, CA

Well ID	Date	TPPH (ug/L)	TEPH (ug/L)	B (ug/L)	T (ug/L)	E (ug/L)	X (ug/L)	MTBE 8020 (ug/L)	MTBE 8260 (ug/L)	DIPE (ug/L)	ETBE (ug/L)	TAME (ug/L)	TBA (ug/L)	TOC (MSL)	Depth to Water (ft.)	GW Elevation (MSL)	DO Reading (ppm)
MW-10	04/30/2004	NA	NA	NA	NA	NA	NA	NA	NA	NA	NA	NA	NA	11.60	8.31	3.29	NA
MW-10	08/23/2004	NA	NA	NA	NA	NA	NA	NA	NA	NA	NA	NA	NA	11.60	8.85	2.75	NA
MW-10	11/08/2004	NA	NA	NA	NA	NA	NA	NA	NA	NA	NA	NA	NA	11.60	8.91	2.69	NA
MW-10	02/02/2005	NA	NA	NA	NA	NA	NA	NA	NA	NA	NA	NA	NA	11.60	7.55	4.05	NA
MW-10	05/09/2005	NA	NA	NA	NA	NA	NA	NA	NA	NA	NA	NA	NA	11.60	6.99	4.61	NA
MW-10	08/04/2005	NA	NA	NA	NA	NA	NA	NA	NA	NA	NA	NA	NA	11.60	7.38	4.22	NA

Abbreviations:

TPPH = Total petroleum hydrocarbons as gasoline by EPA Method 8260B; prior to May 31, 2001, analyzed by EPA Method 8015.

TEPH = Total petroleum hydrocarbons as diesel by modified EPA Method 8015.

BTEX = Benzene, toluene, ethylbenzene, xylenes by EPA Method 8260B; prior to May 31, 2001, analyzed by EPA Method 8020.

MTBE = Methyl tertiary butyl ether

DIPE = Di-isopropyl ether, analyzed by EPA Method 8260B

ETBE = Ethyl tertiary butyl ether, analyzed by EPA Method 8260B

TAME = Tertiary amyl methyl ether, analyzed by EPA Method 8260B

TBA = Tertiary butyl alcohol, analyzed by EPA Method 8260B

TOC = Top of Casing Elevation

GW = Groundwater

DO = Dissolved Oxygen

ug/L = Parts per billion

MSL = Mean sea level

ft. = Feet

<n = Below detection limit

(D) = Duplicate sample

NA = Not Applicable

n/n = 1st case volume/3rd case volume DO's

ppm = parts per million

WELL CONCENTRATIONS
Shell-Branded Service Station
630 High Street
Oakland, CA

Well ID	Date	TPPH (ug/L)	TEPH (ug/L)	B (ug/L)	T (ug/L)	E (ug/L)	X (ug/L)	MTBE 8020 (ug/L)	MTBE 8260 (ug/L)	DIPE (ug/L)	ETBE (ug/L)	TAME (ug/L)	TBA (ug/L)	TOC (MSL)	Depth to Water (ft.)	GW Elevation (MSL)	DO Reading (ppm)
---------	------	----------------	----------------	-------------	-------------	-------------	-------------	------------------------	------------------------	----------------	----------------	----------------	---------------	--------------	----------------------------	--------------------------	------------------------

Notes:

- a = Compounds detected and calculated as TEPH do not match the diesel standard; pattern is characteristic of weathered diesel.
 - b = Concentration reported as TEPH is primarily due to the presence of a lighter petroleum product, possibly gasoline or kerosene.
 - c = Concentration reported as TEPH is primarily due to a heavier petroleum product, possibly motor oil or aged diesel fuel.
 - d = Compounds detected within the TEPH range are not characteristic of the standard diesel chromatographic pattern.
 - e = Concentration reported as TPPH is primarily due to the presence of a discrete hydrocarbon peak not indicative of gasoline.
 - f = 26 ug/L benzene detected using EPA Method 8240.
 - g = The concentration reported as TPPH is due to the presence of a combination of gasoline and a discrete peak not indicative of gasoline.
 - h = Compounds detected and calculated as TPPH appear to be the less volatile constituents of gasoline.
 - i = Sample diluted due to high non-hydrocarbon peak.
 - j = The positive result has an atypical pattern for gasoline analysis.
 - k = Field measurement of DO concentrations before and after well purging.
 - l = This sample was analyzed outside of EPA recommended holding time.
 - m = Hydrocarbon does not match pattern of laboratory's standard.
 - n = Quantity of unknown hydrocarbon(s) in sample based on gasoline.
- Survey information provided by Cambria Environmental Technology in October, 2002.

Blaine Tech Services, Inc.

August 26, 2005

1680 Rogers Avenue
San Jose, CA 95112-1105

Attn.: Leon Gearhart

Project#: BTS#050804-PC2

Project: 98995751

Site: 630 High Street, Oakland

Dear Mr. Gearhart,

Attached is our report for your samples received on 08/05/2005 14:20

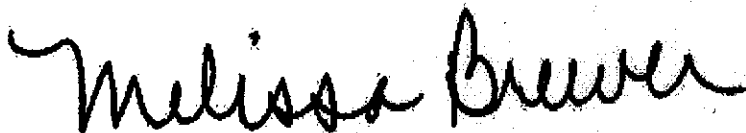
This report has been reviewed and approved for release. Reproduction of this report is permitted only in its entirety.

Please note that any unused portion of the samples will be discarded after 09/19/2005 unless you have requested otherwise.

We appreciate the opportunity to be of service to you. If you have any questions,

You can also contact me via email. My email address is: mbrewer@stl-inc.com

Sincerely,



Melissa Brewer
Project Manager

Severn Trent Laboratories, Inc.

STL San Francisco * 1220 Quarry Lane, Pleasanton, CA 94566

Tel 925 484 1919 Fax 925 484 1096 * www.stl-inc.com * CA DHS ELAP# 2496

Gas/BTEX Fuel Oxygenates by 8260B (C6-C12)

Blaine Tech Services, Inc.

Attn.: Leon Gearhart

1680 Rogers Avenue
San Jose, CA 95112-1105
Phone: (408) 573-0555 Fax: (408) 573-7771Project: BTS#050804-PC2
98995751

Received: 08/05/2005 14:20

Site: 630 High Street, Oakland

Samples Reported

Sample Name	Date Sampled	Matrix	Lab #
MW-1	08/04/2005 14:30	Water	1
MW-3	08/04/2005 15:02	Water	2
MW-5	08/04/2005 15:18	Water	3
MW-6	08/04/2005 14:50	Water	4
MW-7	08/04/2005 13:44	Water	5

Severn Trent Laboratories, Inc.

STL San Francisco * 1220 Quarry Lane, Pleasanton, CA 94566

Tel 925 484 1919 Fax 925 484 1096 * www.stl-inc.com * CA DHS ELAP# 2496

08/26/2005 16:23

Page 1 of 13

Gas/BTEX Fuel Oxygenates by 8260B (C6-C12)

Blaine Tech Services, Inc.

Attn.: Leon Gearhart

1680 Rogers Avenue
San Jose, CA 95112-1105
Phone: (408) 573-0555 Fax: (408) 573-7771

Project: BTS#050804-PC2
98995751

Received: 08/05/2005 14:20

Site: 630 High Street, Oakland

Prep(s): 5030B	Test(s): 8260B
Sample ID: MW 1	Lab ID: 2005-08-0224-1
Sampled: 08/04/2005 14:30	Extracted: 8/18/2005 13:46
Matrix: Water	QC Batch#: 2005/08/18-0166
Analysis Flag: L2: pH <2 (See Legend and Note Section)	

Compound	Conc.	RL	Unit	Dilution	Analyzed	Flag
Gasoline [Shell]	5500	1000	ug/L	20.00	08/18/2005 13:46	
Benzene	24	10	ug/L	20.00	08/18/2005 13:46	
Toluene	12	10	ug/L	20.00	08/18/2005 13:46	
Ethylbenzene	13	10	ug/L	20.00	08/18/2005 13:46	
Total xylenes	30	20	ug/L	20.00	08/18/2005 13:46	
tert-Butyl alcohol (TBA)	230	100	ug/L	20.00	08/18/2005 13:46	
Methyl tert-butyl ether (MTBE)	220	10	ug/L	20.00	08/18/2005 13:46	
Di-isopropyl Ether (DIPE)	ND	40	ug/L	20.00	08/18/2005 13:46	
Ethyl tert-butyl ether (ETBE)	ND	40	ug/L	20.00	08/18/2005 13:46	
tert-Amyl methyl ether (TAME)	ND	40	ug/L	20.00	08/18/2005 13:46	
Surrogate(s)						
1,2-Dichloroethane-d4	98.1	73-130	%	20.00	08/18/2005 13:46	
Toluene-d8	95.3	81-114	%	20.00	08/18/2005 13:46	

Severn Trent Laboratories, Inc.

STL San Francisco * 1220 Quarry Lane, Pleasanton, CA 94566

Tel 925 484 1919 Fax 925 484 1096 * www.stl-inc.com * CA DHS ELAP# 2496

08/26/2005 16:23

Gas/BTEX Fuel Oxygenates by 8260B (C6-C12)

Blaine Tech Services, Inc.
Attn.: Leon Gearhart

1680 Rogers Avenue
San Jose, CA 95112-1105
Phone: (408) 573-0555 Fax: (408) 573-7771

Project: BTS#050804-PC2
98995751

Received: 08/05/2005 14:20

Site: 630 High Street, Oakland

Prep(s):	50303	Test(s):	8260B
Sample ID:	MW/3	Lab ID:	2005/08/0224
Sampled:	08/04/2005 1602	Extracted:	8/18/2005 23:30
Matrix:	Water	QC Batch#:	2005/08/180266
Analysis Flag: L2, pH1 < 2 (See Legend and Note Section)			

Compound	Conc.	RL	Unit	Dilution	Analyzed	Flag
Gasoline [Shell]	1900	500	ug/L	10.00	08/18/2005 23:30	Q1
Benzene	ND	5.0	ug/L	10.00	08/18/2005 23:30	
Toluene	ND	5.0	ug/L	10.00	08/18/2005 23:30	
Ethylbenzene	ND	5.0	ug/L	10.00	08/18/2005 23:30	
Total xylenes	ND	10	ug/L	10.00	08/18/2005 23:30	
tert-Butyl alcohol (TBA)	1900	50	ug/L	10.00	08/18/2005 23:30	
Methyl tert-butyl ether (MTBE)	190	5.0	ug/L	10.00	08/18/2005 23:30	
Di-isopropyl Ether (DIPE)	ND	20	ug/L	10.00	08/18/2005 23:30	
Ethyl tert-butyl ether (ETBE)	ND	20	ug/L	10.00	08/18/2005 23:30	
tert-Amyl methyl ether (TAME)	ND	20	ug/L	10.00	08/18/2005 23:30	
Surrogate(s)						
1,2-Dichloroethane-d4	105.7	73-130	%	10.00	08/18/2005 23:30	
Toluene-d8	97.7	81-114	%	10.00	08/18/2005 23:30	

Severn Trent Laboratories, Inc.

STL San Francisco * 1220 Quarry Lane, Pleasanton, CA 94566

Tel 925 484 1919 Fax 925 484 1096 * www.stl-inc.com * CA DHS ELAP# 2496

08/26/2005 16:23

Gas/BTEX Fuel Oxygenates by 8260B (C6-C12)

Blaine Tech Services, Inc.
Attn.: Leon Gearhart

1680 Rogers Avenue
San Jose, CA 95112-1105
Phone: (408) 573-0555 Fax: (408) 573-7771

Project: BTS#050804-PC2
98995751

Received: 08/05/2005 14:20

Site: 630 High Street, Oakland

Prob(s):	5030B	Test(s):	8260B
Sample ID: MW/5		Lab ID:	2005-08-0224-3
Sampled:	08/04/2005 15:18	Extracted:	8/18/2005 15:10
Matrix:	Water	QC Batch#:	2005/08/18-01.66
Analysis Flag: pH: <2 (See Legend and Note Section)			

Compound	Conc.	RL	Unit	Dilution	Analyzed	Flag
Gasoline [Shell]	290	50	ug/L	1.00	08/18/2005 15:10	
Benzene	ND	0.50	ug/L	1.00	08/18/2005 15:10	
Toluene	ND	0.50	ug/L	1.00	08/18/2005 15:10	
Ethylbenzene	ND	0.50	ug/L	1.00	08/18/2005 15:10	
Total xylenes	ND	2.0	ug/L	1.00	08/18/2005 15:10	
tert-Butyl alcohol (TBA)	ND	60	ug/L	1.00	08/18/2005 15:10	
Methyl tert-butyl ether (MTBE)	19	0.50	ug/L	1.00	08/18/2005 15:10	
Surrogate(s)						
1,2-Dichloroethane-d4	106.0	73-130	%	1.00	08/18/2005 15:10	
Toluene-d8	91.1	81-114	%	1.00	08/18/2005 15:10	

Severn Trent Laboratories, Inc.

STL San Francisco * 1220 Quarry Lane, Pleasanton, CA 94566

Tel 925 484 1919 Fax 925 484 1096 * www.stl-inc.com * CA DHS ELAP# 2496

08/26/2005 16:23

Gas/BTEX Fuel Oxygenates by 8260B (C6-C12)

Blaine Tech Services, Inc.

Attn.: Leon Gearhart

1680 Rogers Avenue
San Jose, CA 95112-1105
Phone: (408) 573-0555 Fax: (408) 573-7771

Project: BTS#050804-PC2
98995751

Received: 08/05/2005 14:20

Site: 630 High Street, Oakland

Prep(s)	8260B	Test(s)	8260E
Sample ID	MW16	Lab ID	2005-08-0224-4
Sampled	08/04/2005 14:50	Extracted	8/18/2005 15:37
Matrix	Water	GC Batch#	2005/08/18/0166
pH	~2		

Compound	Conc.	RL	Unit	Dilution	Analyzed	Flag
Gasoline [Shell]	ND	50	ug/L	1.00	08/18/2005 15:37	
Benzene	ND	0.50	ug/L	1.00	08/18/2005 15:37	
Toluene	ND	0.50	ug/L	1.00	08/18/2005 15:37	
Ethylbenzene	ND	0.50	ug/L	1.00	08/18/2005 15:37	
Total xylenes	ND	1.0	ug/L	1.00	08/18/2005 15:37	
tert-Butyl alcohol (TBA)	ND	5.0	ug/L	1.00	08/18/2005 15:37	
Methyl tert-butyl ether (MTBE)	23	0.50	ug/L	1.00	08/18/2005 15:37	
Di-isopropyl Ether (DIPE)	ND	2.0	ug/L	1.00	08/18/2005 15:37	
Ethyl tert-butyl ether (ETBE)	ND	2.0	ug/L	1.00	08/18/2005 15:37	
tert-Amyl methyl ether (TAME)	ND	2.0	ug/L	1.00	08/18/2005 15:37	
Surrogate(s)						
1,2-Dichloroethane-d4	101.4	73-130	%	1.00	08/18/2005 15:37	
Toluene-d8	93.3	81-114	%	1.00	08/18/2005 15:37	

Gas/BTEX Fuel Oxygenates by 8260B (C6-C12)

Blaine Tech Services, Inc.

Attn.: Leon Gearhart

1680 Rogers Avenue

San Jose, CA 95112-1105

Phone: (408) 573-0555 Fax: (408) 573-7771

Project: BTS#050804-PC2

98995751

Received: 08/05/2005 14:20

Site: 630 High Street, Oakland

Prep(s): 5030B	Test(s): 8260B
Sample ID: MW7	Lab ID: 2005-08-0224-6
Sampled: 08/04/2005 13:44	Extracted: 08/18/2005 16:05
Matrix: Water	QC Batch#: 2005/08/18-0166
Analysis Flag: H1, pH: 5.2 (See Legend and Note Section)	

Compound	Conc.	RL	Unit	Dilution	Analyzed	Flag
Gasoline [Shell]	ND	50	ug/L	1.00	08/18/2005 16:05	
Benzene	ND	0.50	ug/L	1.00	08/18/2005 16:05	
Toluene	ND	0.50	ug/L	1.00	08/18/2005 16:05	
Ethylbenzene	ND	0.50	ug/L	1.00	08/18/2005 16:05	
Total xylenes	ND	1.0	ug/L	1.00	08/18/2005 16:05	
tert-Butyl alcohol (TBA)	ND	5.0	ug/L	1.00	08/18/2005 16:05	
Methyl tert-butyl ether (MTBE)	1.0	0.50	ug/L	1.00	08/18/2005 16:05	
Di-isopropyl Ether (DIPE)	ND	2.0	ug/L	1.00	08/18/2005 16:05	
Ethyl tert-butyl ether (ETBE)	ND	2.0	ug/L	1.00	08/18/2005 16:05	
tert-Amyl methyl ether (TAME)	ND	2.0	ug/L	1.00	08/18/2005 16:05	
Surrogate(s)						
1,2-Dichloroethane-d4	95.0	73-130	%	1.00	08/18/2005 16:05	
Toluene-d8	95.0	81-114	%	1.00	08/18/2005 16:05	

Severn Trent Laboratories, Inc.

STL San Francisco * 1220 Quarry Lane, Pleasanton, CA 94566

Tel 925 484 1919 Fax 925 484 1096 * www.stl-inc.com * CA DHS ELAP# 2496

08/26/2005 16:23

Gas/BTEX Fuel Oxygenates by 8260B (C6-C12)

Blaine Tech Services, Inc.
Attn.: Leon Gearhart

1680 Rogers Avenue
San Jose, CA 95112-1105
Phone: (408) 573-0555 Fax: (408) 573-7771

Project: BTS#050804-PC2
98995751

Received: 08/05/2005 14:20

Site: 630 High Street, Oakland

Batch QC Report			
Prep(s): 6030B			Test(s): 8260B
Method: Blank		Water	QC Batch # 2005/08/18-0166
MB: 2005/08/18-0166-059			Date Extracted: 08/18/2005 12:59

Compound	Conc.	RL	Unit	Analyzed	Flag
Gasoline [Shell]	ND	50	ug/L	08/18/2005 12:59	
Benzene	ND	0.5	ug/L	08/18/2005 12:59	
Toluene	ND	0.5	ug/L	08/18/2005 12:59	
Ethylbenzene	ND	0.5	ug/L	08/18/2005 12:59	
Total xylenes	ND	1.0	ug/L	08/18/2005 12:59	
tert-Butyl alcohol (TBA)	ND	5.0	ug/L	08/18/2005 12:59	
Methyl tert-butyl ether (MTBE)	ND	0.5	ug/L	08/18/2005 12:59	
Di-isopropyl Ether (DIPE)	ND	2.0	ug/L	08/18/2005 12:59	
Ethyl tert-butyl ether (ETBE)	ND	2.0	ug/L	08/18/2005 12:59	
tert-Amyl methyl ether (TAME)	ND	2.0	ug/L	08/18/2005 12:59	
Surrogates(s)					
1,2-Dichloroethane-d4	101.8	73-130	%	08/18/2005 12:59	
Toluene-d8	91.8	81-114	%	08/18/2005 12:59	

Gas/BTEX Fuel Oxygenates by 8260B (C6-C12)

Blaine Tech Services, Inc.

Attn.: Leon Gearhart

1680 Rogers Avenue
San Jose, CA 95112-1105
Phone: (408) 573-0555 Fax: (408) 573-7771

Project: BTS#050804-PC2
98995751

Received: 08/05/2005 14:20

Site: 630 High Street, Oakland

Batch QC Report					
Prep(s): 6030B				Test(s): 8260B	
Method: Blank		Water		QC Batch # 2005/08/18-02-66	
MB: 2005/08/18-02-66-046				Date Extracted: 08/18/2005 19:46	

Compound	Conc.	RL	Unit	Analyzed	Flag
Gasoline [Shell]	ND	50	ug/L	08/18/2005 19:46	
tert-Butyl alcohol (TBA)	ND	5.0	ug/L	08/18/2005 19:46	
Methyl tert-butyl ether (MTBE)	ND	0.5	ug/L	08/18/2005 19:46	
Di-isopropyl Ether (DIPE)	ND	1.0	ug/L	08/18/2005 19:46	
Ethyl tert-butyl ether (ETBE)	ND	0.5	ug/L	08/18/2005 19:46	
tert-Amyl methyl ether (TAME)	ND	0.5	ug/L	08/18/2005 19:46	
Benzene	ND	0.5	ug/L	08/18/2005 19:46	
Toluene	ND	0.5	ug/L	08/18/2005 19:46	
Ethylbenzene	ND	0.5	ug/L	08/18/2005 19:46	
Total xylenes	ND	1.0	ug/L	08/18/2005 19:46	
Surrogates(s)					
1,2-Dichloroethane-d4	107.0	73-130	%	08/18/2005 19:46	
Toluene-d8	97.2	81-114	%	08/18/2005 19:46	

Gas/BTEX Fuel Oxygenates by 8260B (C6-C12)

Blaine Tech Services, Inc.
Attn.: Leon Gearhart

1680 Rogers Avenue
San Jose, CA 95112-1105
Phone: (408) 573-0555 Fax: (408) 573-7771

Project: BTS#050804-PC2
98995751

Received: 08/05/2005 14:20

Site: 630 High Street, Oakland

Batch QC Report			
Prep(s): 5030B			Test(s): 8260B
Laboratory Control Spike		Water	QC Batch # 2005/08/18-01.66
LCS: 2005/08/18-01.66-023		Extracted: 08/18/2005	Analyzed: 08/18/2005 11:23
LCSD:			

Compound	Conc. ug/L		Exp. Conc.	Recovery %		RPD	Ctrf. Limits %		Flags	
	LCS	LCSD		LCS	LCSD		%	Rec.	RPD	LCS
Benzene	23.8		25.0	95.2			69-129	20		
Toluene	30.3		25.0	121.2			70-130	20		
Methyl tert-butyl ether (MTBE)	20.8		25.0	83.2			65-165	20		
Surrogates(s)										
1,2-Dichloroethane-d4	420		500	84.0			73-130			
Toluene-d8	473		500	94.6			81-114			

Gas/BTEX Fuel Oxygenates by 8260B (C6-C12)

Blaine Tech Services, Inc.
Attn.: Leon Gearhart

1680 Rogers Avenue
San Jose, CA 95112-1105
Phone: (408) 573-0555 Fax: (408) 573-7771

Project: BTS#050804-PC2
98995751

Received: 08/05/2005 14:20

Site: 630 High Street, Oakland

Batch QC Report									
Prep(s): 5030B					Test(s): 8260B				
Laboratory Control Spike			Water			QC Batch # 2005/08/18-02.66			
LCS 2005/08/18-02.66-050			Extracted: 08/18/2005			Analyzed: 08/18/2005 18:50			
LCSD									

Compound	Conc. ug/L		Exp. Conc.	Recovery %		RPD	Ctrl. Limits %		Flags	
	LCS	LCSD		LCS	LCSD		%	Rec.	RPD	LCS
Benzene	25.2		25.0	100.8			69-129	20		
Toluene	28.9		25.0	115.6			70-130	20		
Methyl tert-butyl ether (MTBE)	27.8		25.0	111.2			65-165	20		
Surrogates(s)										
1,2-Dichloroethane-d4	470		500	94.0			73-130			
Toluene-d8	476		500	95.2			81-114			

Severn Trent Laboratories, Inc.

08/26/2005 16:23

STL San Francisco * 1220 Quarry Lane, Pleasanton, CA 94566

Tel 925 484 1919 Fax 925 484 1096 * www.stl-inc.com * CA DHS ELAP# 2496

Gas/BTEX Fuel Oxygenates by 8260B (C6-C12)

Blaine Tech Services, Inc.

Attn.: Leon Gearhart

1680 Rogers Avenue
San Jose, CA 95112-1105
Phone: (408) 573-0555 Fax: (408) 573-7771

Project: BTS#050804-PC2
98995751

Received: 08/05/2005 14:20

Site: 630 High Street, Oakland

Batch QC Report			
Prep(s): 8260B			Test(s): 8260B
Matrix Spike (MS / MSD)		Water	QC Batch # 2005/08/18-01.66
MW-1 -> MS			Lab ID: 2005-08-0224-001
MS: 2005/08/18-01.66-018	5	Extracted: 08/18/2005	Analyzed: 08/18/2005 14:13
			Dilution: 20.00
MSD: 2005/08/18-01.66-042	5	Extracted: 08/18/2005	Analyzed: 08/18/2005 14:42
			Dilution: 20.00

Compound	Conc. ug/L			Spk.Level ug/L	Recovery %			Limits %		Flags	
	MS	MSD	Sample		MS	MSD	RPD	Rec.	RPD	MS	MSD
Benzene	466	513	23.9	500	88.4	97.8	10.1	69-129	20		
Toluene	568	587	11.8	500	111.2	115.0	3.4	70-130	20		
Methyl tert-butyl ether	643	745	222	500	84.2	104.6	21.6	65-165	20		R1
Surrogate(s)											
1,2-Dichloroethane-d4	446	468		500	89.2	93.6		73-130			
Toluene-d8	487	489		500	97.4	97.8		81-114			

Gas/BTEX Fuel Oxygenates by 8260B (C6-C12)

Blaine Tech Services, Inc.
Attn.: Leon Gearhart

1680 Rogers Avenue
San Jose, CA 95112-1105
Phone: (408) 573-0555 Fax: (408) 573-7771

Project: BTS#050804-PC2
98995751

Received: 08/05/2005 14:20

Site: 630 High Street, Oakland

Batch QC Report			
Prep(s): 8260B			Test(s): 8260B
Matrix Spike (MS/MSD)	Water		QC Batch # 2005/08/18-02:66
MS/MSD			Lab ID: 2005-08-0225 - 009
MS: 2005/08/18-02:66-026	Extracted: 08/19/2005	Analyzed: 08/19/2005 00:26	Dilution: 25.00
MSD: 2005/08/18-02:66-054	Extracted: 08/19/2005	Analyzed: 08/19/2005 00:54	Dilution: 25.00

Compound	Conc. ug/L			Spk.Level ug/L	Recovery %			Limits %		Flags	
	MS	MSD	Sample		MS	MSD	RPD	Rec.	RPD	MS	MSD
Benzene	2490	2540	1880	625	97.6	105.6	7.9	69-129	20		
Toluene	890	942	219	625	107.4	115.7	7.4	70-130	20		
Methyl tert-butyl ether	3530	3370	2680	625	136.0	110.4	20.8	65-165	20		R1
Surrogate(s)											
1,2-Dichloroethane-d4	468	474		500	93.6	94.8		73-130			
Toluene-d8	486	500		500	97.2	100.0		81-114			

Severn Trent Laboratories, Inc.

STL San Francisco * 1220 Quarry Lane, Pleasanton, CA 94566

Tel 925 484 1919 Fax 925 484 1096 * www.stl-inc.com * CA DHS ELAP# 2496

08/26/2005 16:23

Gas/BTEX Fuel Oxygenates by 8260B (C6-C12)

Blaine Tech Services, Inc.

Attn.: Leon Gearhart

1680 Rogers Avenue

San Jose, CA 95112-1105

Phone: (408) 573-0555 Fax: (408) 573-7771

Project: BTS#050804-PC2
98995751

Received: 08/05/2005 14:20

Site: 630 High Street, Oakland

Legend and Notes

Sample Comment

Lab ID: 2005-08-0224 -3

The Reporting limit was raised for TBA and Total Xylenes due to possible carryover from the previous sample

Analysis Flag

H1

Extracted out of holding time.

L2

Reporting limits were raised due to high level of analyte present in the sample.

Result Flag

Q1

Quantit. of unknown hydrocarbon(s) in sample based on gasoline.

R1

Analyte RPD was out of QC limits.

Severn Trent Laboratories, Inc.

STL San Francisco * 1220 Quarry Lane, Pleasanton, CA 94566

Tel 925 484 1919 Fax 925 484 1096 * www.stl-inc.com * CA DHS ELAP# 2496

08/26/2005 16:23

Page 13 of 13

Brewer, Melissa

From: Leon Gearhart [lgearhart@blainetech.com]
Sent: Thursday, August 11, 2005 8:58 AM
To: Brewer, Melissa
Cc: Ana Friel (Ana Friel)
Subject: RE: Verification 630 High Street, Oakland: 2005-08-0224

Melissa,

Thanks for adding TBA. Don't worry about trying to get TPH-D.

Leon Gearhart
Operations Manager
Blaine Tech Services
(408) 573-0555 ext. 206

-----Original Message-----

From: Brewer, Melissa [mailto:MBrewer@stl-inc.com]
Sent: Wednesday, August 10, 2005 6:02 PM
To: Leon Gearhart
Subject: RE: Verification 630 High Street, Oakland: 2005-08-0224

I added TBA to MW-5. It's dangerous adding Diesel analysis because volatiles has been using all 3 VOAs frequently since they started running the screening instrument. In fact the Diesel extractionists are often re-extracting all 3 of their VOAs too. We can try to get one Diesel extraction (and hopefully it will work) and allow the Volatiles Dept. only 2 VOAs to work with. The problem is that you might end-up with estimated volatiles and diesel data.

Melissa Brewer
STL - San Francisco
1220 Quarry Lane
Pleasanton, CA 94566

(925) 484-1919

-----Original Message-----

From: Leon Gearhart [mailto:lgearhart@blainetech.com]
Sent: Wednesday, August 10, 2005 2:21 PM
To: Brewer, Melissa
Cc: 'Friel, Ana'
Subject: RE: Verification 630 High Street, Oakland: 2005-08-0224

Melissa,

Can you check to see if we can get TBA for MW-5. Also we were wondering if it is possible to get TPH-D from the current bottle set?
Thanks

Leon Gearhart
Operations Manager
Blaine Tech Services
(408) 573-0555 ext. 206

-----Original Message-----

