

August 6, 1992

Lisa Chen
Alameda County Dept. Health
80 Swan Way, Room 200
Oakland, CA. 94621

Dear Ms. Chen;

Re: 344 105th Ave., Oakland, CA.

The enclosed map shows locations where samples were taken before excavating property to remove contaminates.

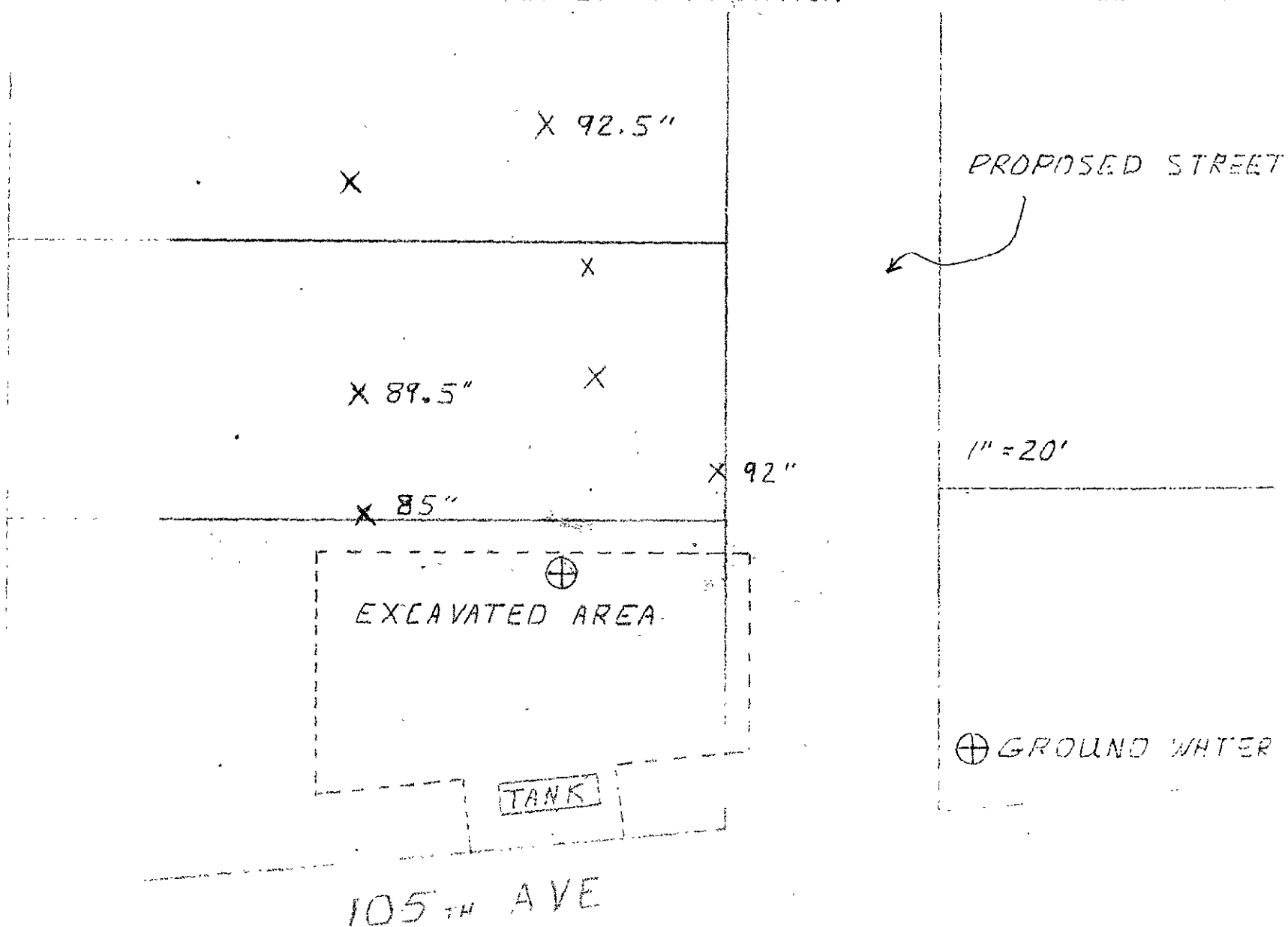
All samples were N/D.

Sincerely Yours,



Verl K. Rothlisberger

THESE ARE PROVEN LIMITS OF CONTAMINATION



Vert sent -

12, 1992



SOIL SAMPLES

*

*

*

*

*

*

*

*

*

*

*

*

*

PROPOSED STREET

*

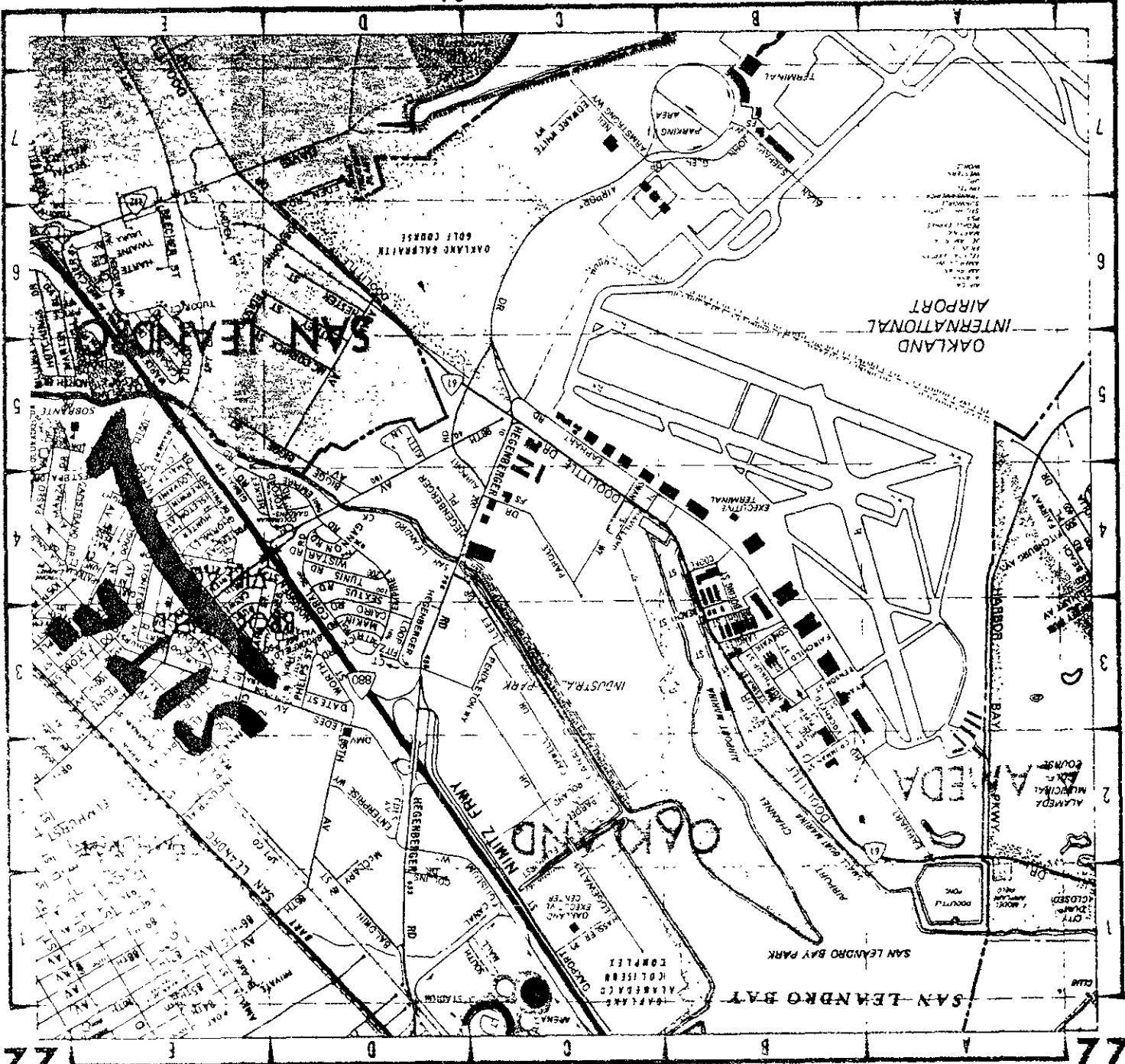
*

BACKFILL MATERIAL

SOIL SAMPLES - *

*

105 TH AVE OAKLAND



FOR CONTINUATION SEE MAP 12

22

460

FOR CONTINUATION SEE MAP 21

447

448

449

450

451

452

453

454

455

456

457

458

459

1:500

1:512

24

FOR CONTINUATION SEE MAP

503

1:500

COPYRIGHT © 1988 BY Technical Data Maps

25

22