

TABLE 4

Analytical Results for Soil Samples
Douglass Property

Concentration, milligrams per kilogram (mg/kg)

<u>Boring #</u>	<u>Sample Depth, ft.</u>	<u>Date Sampled</u>	<u>TPHg(1)</u>	<u>Benzene</u>	<u>Ethyl-benzene</u>	<u>Toluene</u>	<u>Total xylenes</u>	<u>Lead</u>
B1	25	3/5/93	<1.0(2)	<0.005	<0.005	<0.005	<0.015	8.1
B1	4	3/5/93	<1.0	<0.005	<0.005	<0.005	<0.015	200
B1	75	3/5/93	<1.0	<0.005	<0.005	<0.005	<0.015	9.8
B2	25	3/5/93	<1.0	<0.005	<0.005	<0.005	<0.015	5.3
B2	75	3/5/93	260	<0.005	<0.005	0.81	31	5.5
B2	9	3/5/93	570	<0.005	18	32	110	6.7
B3	25	3/5/93	<1.0	<0.005	<0.005	<0.005	<0.015	120
B3	75	3/5/93	<1.0	<0.005	<0.005	<0.005	<0.015	8.5
MW1	25	3/9/93	<1.0	<0.005	<0.005	<0.005	0.23	7.3
MW1	75	3/9/93	<1.0	<0.005	<0.005	<0.005	<0.015	13
MW2	25	3/5/93	<1.0	<0.005	<0.005	<0.005	<0.015	12
MW2	75	3/5/93	<1.0	<0.005	<0.005	<0.005	<0.015	6.5
MW2	9	3/5/93	<1.0	<0.005	<0.005	<0.005	<0.015	5.5
MW3	25	3/5/93	<1.0	<0.005	<0.005	<0.005	<0.015	6.6
MW3	75	3/5/93	530	<0.005	14	15	94	5.9

Note:

(1) TPHg = total petroleum hydrocarbons as gasoline

(2) "<" indicates that the constituent was not identified at the detection limit given

TABLE 5

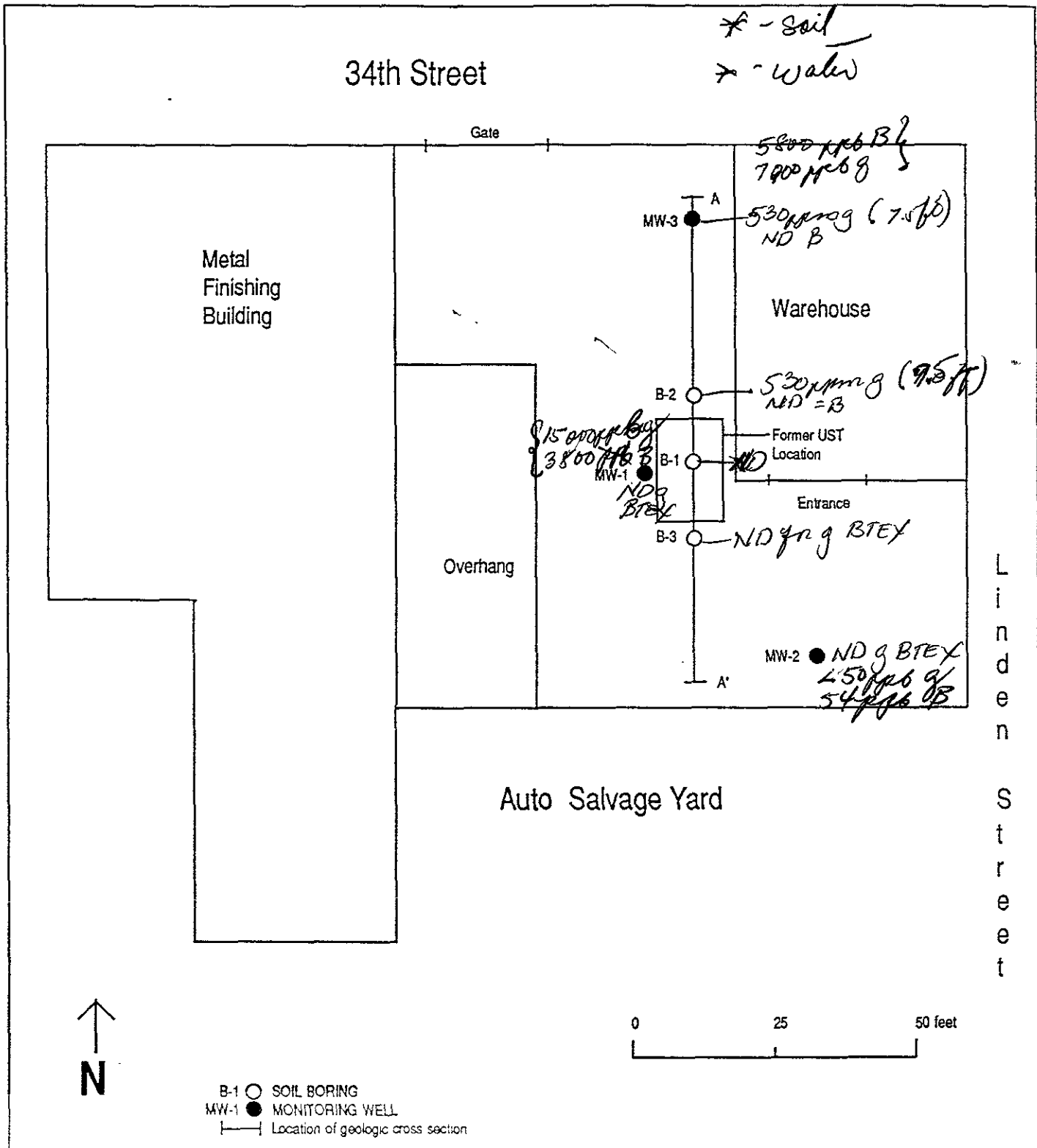
Analytical Results for Groundwater Samples
Douglass Property

Concentration, milligrams per liter (mg/l)

Monitoring Well #	Date	TPHg (1)	Benzene	Ethyl-benzene	Toluene	Total xylenes	Lead
MW1	3/11/93	15	3.8	0.56	12	13	<0.05 (2)
MW2	3/11/93	<0.05	0.054	<0.0003	<0.0003	0.027	<0.05
MW3	3/11/93	7	5.8	18	2.4	18	<0.05
<hr/>							
Primary MCL (3)		-	0.001	0.68	1	1.75	15
Secondary MCL (4)		-	-	0.03	0.04	0.02	-
Ambient Water Quality Criteria, Human Health (5)		-	0.00066	-	-	-	-
Saltwater Aquatic Life Protection , acute		-	5.1	0.43	6.3	-	-
Saltwater Aquatic Life Protection , chronic		-	-	-	5	-	-

Notes:

- (1) TPHg = total petroleum hydrocarbons as gasoline
- (2) "<" indicates that the constituent was not identified at the detection limit given
- (3) State or Federal Primary Maximum Contaminant Level
- (4) State or Federal Secondary Maximum Contaminant Level
- (5) One-in-a-million Incremental Cancer Risk Estimate, USEPA National Ambient Water Quality Criteria



Northwest Envirocon
Environmental Consulting

Borings & Well Locations
1051 & 1073 34th Street
Oakland, California

Plate

2

JOB NUMBER
6409

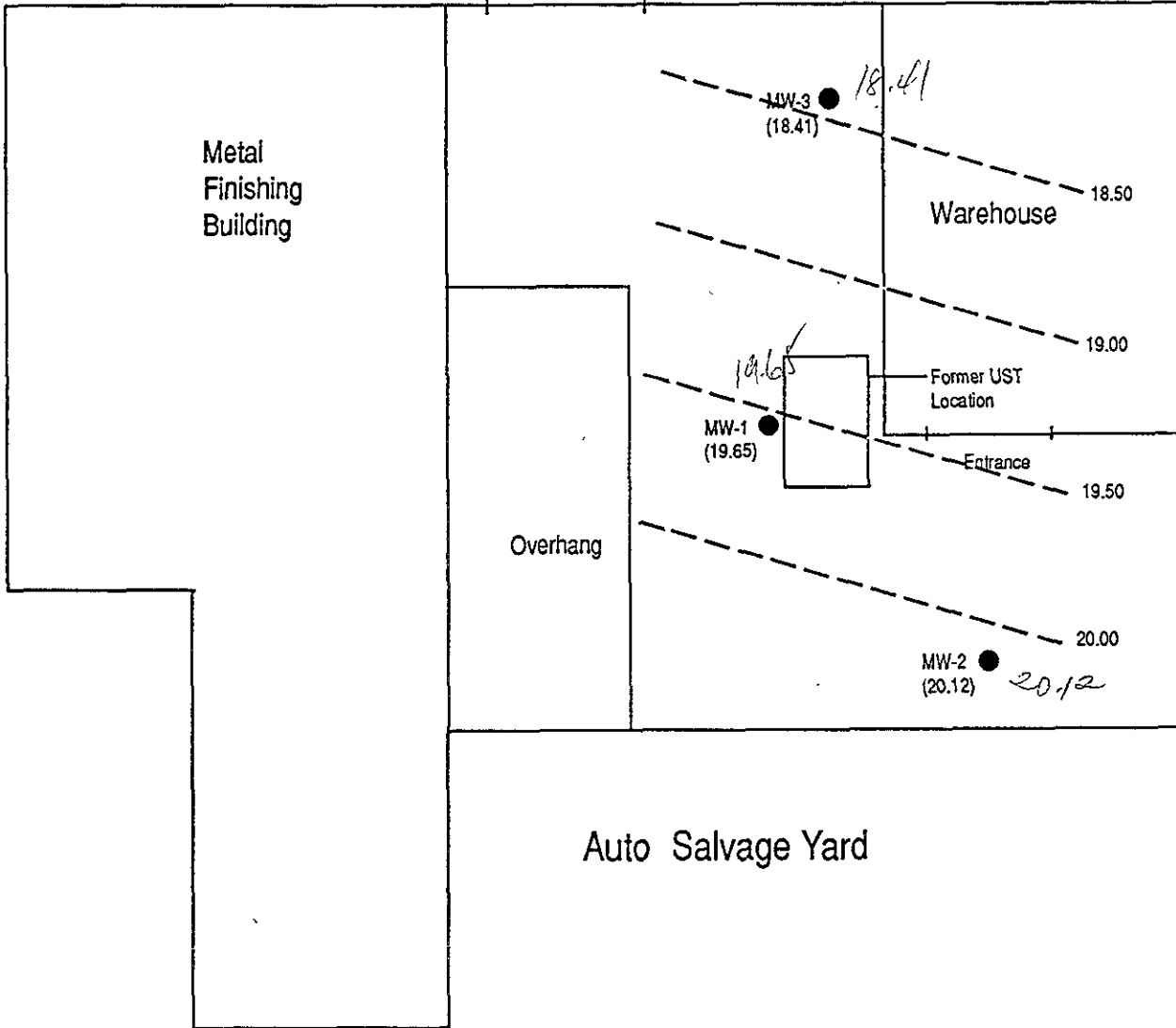
DATE
April 2, 1993

REVISED DATE



34th Street

Gate



L
i
n
d
e
n

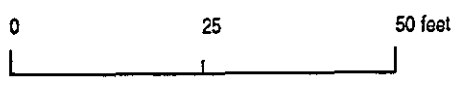
S
t
r
e
e
t



19.50 WATER TABLE CONTOUR
FEET ABOVE MEAN SEA LEVEL

(19.65) WATER TABLE ELEVATION
FEET ABOVE MEAN SEA LEVEL
MARCH 29, 1993

MW-1 ● MONITORING WELL



Northwest Envirocon
Environmental Consulting

Water Table Contour Map
1051 & 1073 34th Street
Oakland, California

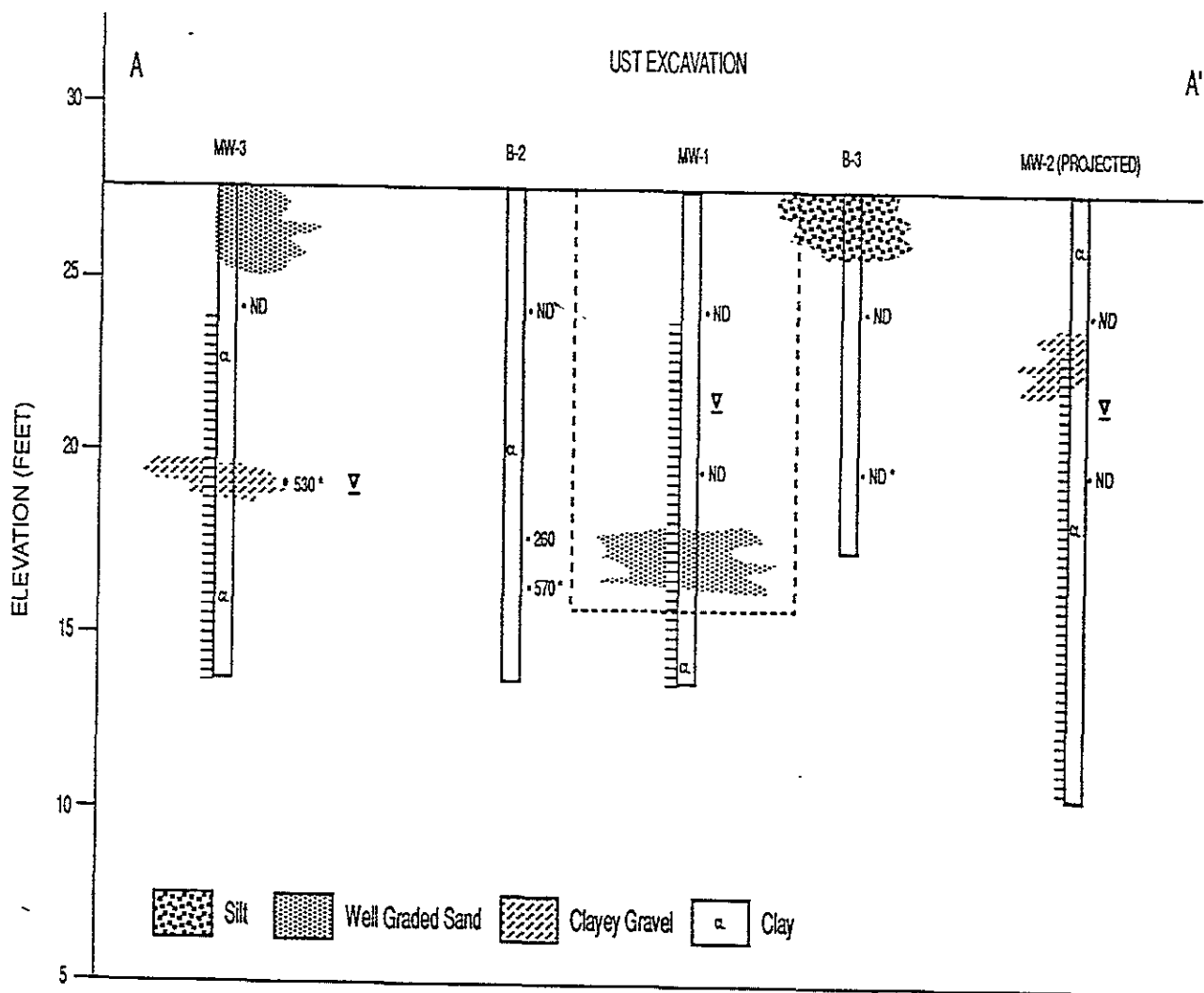
Plate

4

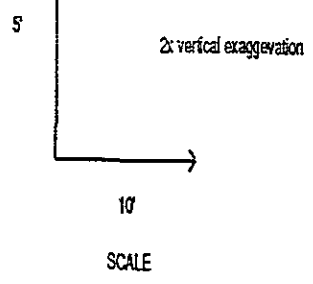
JOB NUMBER
6409

DATE
April 2, 1993

REVISED DATE



* Water level encountered during drilling
 ▽ Static water level measured - 03/29/93
 • Interval sampled for laboratory analysis
 530 concentration of TPHg identified in a sample, milligrams per kilogram, ND indicated not detected in sample
 ≡ screened interval of monitoring well



Northwest Envirocon
 Environmental Consulting

Geologic Cross Section
 1051 & 1073 34th Street
 Oakland, California

Plate

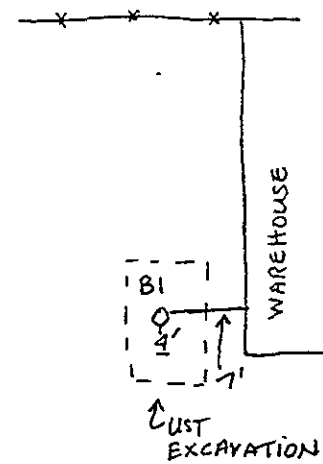
3

JOB NUMBER
 6409

DATE
 April 2, 1993

REVISED DATE

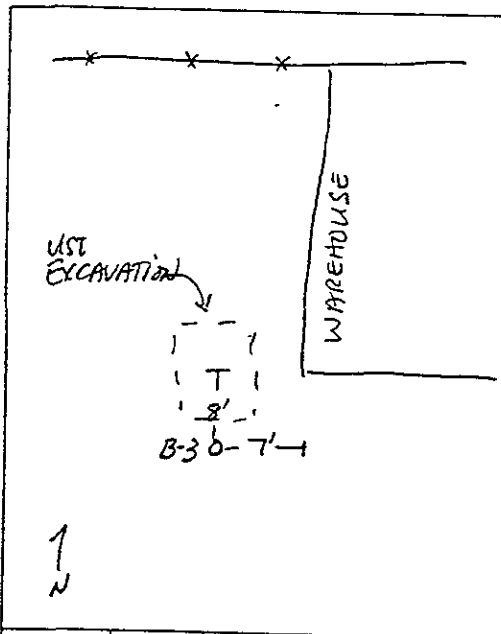
NORTHWEST ENVIROCON INC.
Field Log of Test Pit or Auger Hole



Site Location <i>Douglas Metal Finishing</i>		Boring # <i>B-1</i>
Project # <i>6409</i>	Date <i>3/5/93</i>	Sheet <i>1</i> of <i>2</i>
Drilling Contractor <i>Bayland</i>		
Driller <i>Roger Strong</i>		Logger <i>Mary McDonald</i>
Start <i>10:15 am</i>	Finish <i>11:00 am</i>	Boring Diameter <i>6"</i>
Drilling Method <i>Hollow Stem Auger</i>		
Sampling Method <i>Modified California / Brass or Stainless Steel Sleeves</i>		
n/s		est. water depth
		elev

Depth	Cas.	Annu.	Well Legend	Screening Results (ppm)	Sample #	# Rec.	Blow Ct.	USCS	Description of Material	
1			<i>Backfilled with a cement/bentonite mixture</i>							
2										
3					<i>0</i>	<i>2.5</i>		<i>7</i>	<i>SW</i>	<i>olive gray sand with gravel</i>
4							<i>9</i>	<i>9</i>		<i>(SW) - 5 Y 4/1 medium dense, dry, gravel is angular,</i>
5					<i>0</i>	<i>4.0</i>		<i>6</i>	<i>CL</i>	<i>rust staining</i>
6							<i>6</i>	<i>6</i>		<i>yellowish brown clay with fine sand and gravel (CL)</i>
7									<i>GW</i>	<i>- 10 YR 4/2 stiff, gravel is angular, brick inclusion</i>
8					<i>10</i>	<i>7.5</i>		<i>3</i>		<i>Water at 5 feet</i>
9								<i>3</i>		<i>dark yellowish brown gravel with sand and some fines (GW) - 10 YR 4/2</i>
10					<i>18</i>	<i>9.0</i>		<i>1</i>	<i>SC</i>	<i>loose, angular</i>
11								<i>2</i>		<i>as above</i>
12								<i>3</i>		<i>Brownish black clayey sand with minor fine gravel (SC) 5 YR 2/1 loose fine grained</i>

NORTHWEST ENVIROCON INC.
Field Log of Test Pit or Auger Hole



Site Location <i>Douglas Metal Finishing</i>		Boring # <i>B-3</i>
Project # <i>6409</i>	Date <i>3/5/93</i>	Sheet <i>1</i> of <i>1</i>
Drilling Contractor <i>Bayland</i>		
Driller <i>Roger Strong</i>		Logger <i>Mary McDonald</i>
Start <i>9:15 am</i>	Finish <i>10:00 am</i>	Boring Diameter <i>6"</i>
Drilling Method <i>Hollow Stem Auger</i>		
Sampling Method <i>Modified California / brass or stainless steel sleeves</i>		
n/s		est. water depth
		elev

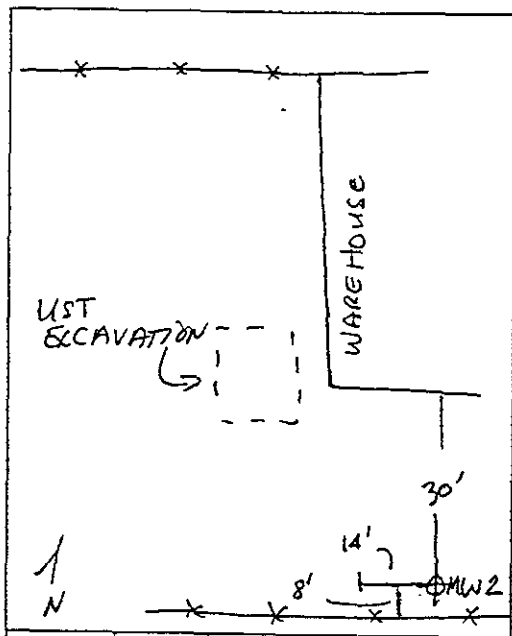
Depth	Cas.	Annu.	Well Legend	Screening Results (ppm)	Sample #	# Rec.	Blow Ct.	USCS	Description of Material
1			<i>backfilled with cement/bentonite mixture</i>					<i>ML</i>	
2									
3				<i>1</i>	<i>2.5</i>				<i>light olive silt with and gravel (ML)</i>
4				<i>0</i>	<i>4.0</i>			<i>CL</i>	<i>5Y 5/2, soft, fine sand, medium gravel, rust staining</i>
5									<i>brownish black clay with sand (CL) 5YR 2/1</i>
6									<i>minor fine angular gravel slight odor, pieces of glass</i>
7									<i>dusky brown clay with sand and gravel (CL) 5YR 7/2</i>
8				<i>0</i>	<i>7.5</i>		<i>3</i>		<i>dry (wet where it breaks)</i>
9							<i>8</i>	<i>fine sand, angular gravel, rust staining</i>	
10					<i>1</i>	<i>9.0</i>		<i>3</i>	<i>more gravel at 8 ft. more clay at 8.5 ft.</i>
11							<i>8</i>	<i>water at 9 ft</i>	
12							<i>10</i>	<i>more gravel at 9 ft</i>	
									<i>Total Depth = 10.5 ft</i>

NORTHWEST ENVIROCON INC.
Field Log of Test Pit or Auger Hole

<p style="font-size: small;">A site diagram showing a rectangular 'WAREHOUSE' on the right. To its left is a dashed rectangle representing a 'UST EXCAVATION' with dimensions 15' by 2'. A point 'MW-1' is marked within the excavation. A north arrow 'N' is located to the left of the diagram.</p>	Site Location <i>Douglas Metal Finishing</i>	Boring # <i>MW-1</i>	
	Project # <i>6409</i>	Date <i>3/9/93</i>	Sheet <i>1 of 2</i>
	Drilling Contractor <i>Bayland</i>		
	Driller <i>Roger Strong</i>		Logger <i>Mary McDonald</i>
	Start <i>8:35am</i>	Finish <i>11:50 am</i>	Boring Diameter <i>12"</i>
	Drilling Method <i>Hollow Stem Auger</i>		
Sampling Method <i>Modified California / Brass or stainless steel sleeves</i>			
n/s est. water depth elev			

Depth	Cas.	Annu.	Well Legend	Screening Results (ppm)	Sample #	# Rec.	Blow Ct.	USCS	Description of Material		
1			Casing: 4" sch 40 PVC 0-4'2"					CL			
2											
3				0	2.5		3		CL	brownish black silty clay (CL) 5YR2/1, stiff, trace fine sand and angular gravel, mottled with dark brown, contains piece of brick and clay pipe	
4						4	6				
5			Screen 4" sch 40 PVC 4'2"- 12'2"	0	4.0		2				11
6			0.020" slots				14				14
7											
8				0	7.5		3				6
9							7		7		
10				36	9.0		11		11	SC	moderate brown sandy clay (CL) 5YR 3/4 stiff, stringers of brown clay, mottled with olive rust staining
11				226			22		22		
12				590			24		24		
									CL	at 9.5 feet clayey sand with gravel, medium dense	

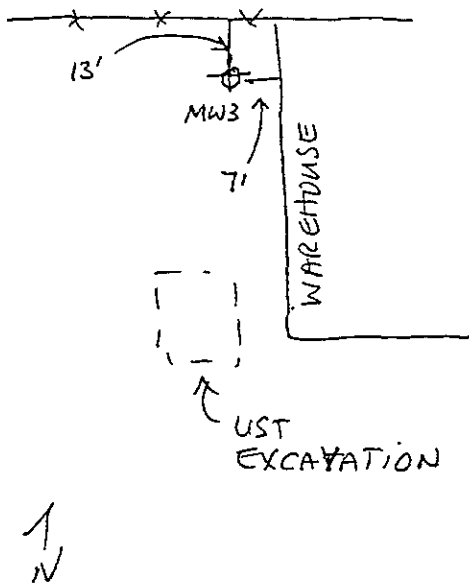
NORTHWEST ENVIROCON INC.
Field Log of Test Pit or Auger Hole



Site Location <i>Douco Metal Finishing</i>		Boring # <i>MW-2</i>
Project # <i>6409</i>	Date <i>3/5/93</i>	Sheet <i>1 of 2</i>
Drilling Contractor <i>Bayland</i>		
Driller <i>Roger Strong</i>		Logger <i>Mary McDonald</i>
Start <i>11:45 am</i>	Finish <i>2:15 pm</i>	Boring Diameter <i>12"</i>
Drilling Method <i>Hollow Stem Auger</i>		
Sampling Method <i>Modified California / brass or stainless steel sleeves</i>		
n/s		est. water depth
		elev

Depth	Cas.	Annu.	Well Legend	Screening Results (ppm)	Sample #	# Rec.	Blow Ct.	USCS	Description of Material
1			Casing: 4" sch 40 PVC 0-5'						
2									
3					2.5		3	CL	Brownish black clay with sand (CL) 5YR 2/1
4			Screen				7		stiff, fine sand, small brick inclusion
5			4" sch 40 PVC 5-15'		4.0		5	GC	dark yellowish brown clayey gravel (GC)
6			0.020" slots				10		10YR 4/2, medium dense, rust staining
7							10		
8					7.5		5	CL	dark yellowish brown silty clay with sand and gravel (CL) 10YR 4/2
9							12		very stiff, fine sand, angular gravel
10					9.0		2		more sand, no gravel at 8.5 ft
11							7		less sand, rust staining at 9.0 ft
12							7		light olive gray at 10 ft

NORTHWEST ENVIROCON INC.
Field Log of Test Pit or Auger Hole



Site Location	Douglas Metal Finishing	Boring #	MW-3
Project #	6409	Date	3/5/93
Drilling Contractor		Bayland	
Driller	Roger Strong	Logger	Mary McDonald
Start	2:30 pm	Finish	4:15 pm
Boring Diameter		12"	
Drilling Method			
Hollow Stem Auger			
Sampling Method			
Modified California / brass or stainless steel sleeves			
n/s		est. water depth	elev

Depth	Cas.	Annu.	Well Legend	Screening Results (ppm)	Sample #	# Rec.	Blow Ct.	USCS	Description of Material			
1			Casing 4" sch 40 PVC 0-4'					SW	light olive gray sand with gravel (SW), fine gravel, piece of glass			
2												
3					0	2.5	2					
4			Screen: 4'-14' 4" sch 40 PVC 0.020" slots				4	CL	grayish brown sandy clay with gravel (CL) 5YR3/2 stiff fine angular gravel more gravel, color change to brownish gray 5YR4/1 at 3.3 ft. grayish brown 5YR3/2 with rust staining at 4 ft.			
5					0	4.0	5			7		
6										7		
7										9		
8					44	7.5	3			8		
9										8	GC	brown 5YR3/4 brick inclusion at 7.8ft
10					18	9.0	3			8		
11										7	CL	grayish brown clayey gravel (GC) 5YR3/2 loose, wet, angular moderate brown sandy clay with gravel (CL) 10YR5/4 stiff fine gravel
12												

cement
 bentonite
 # 2/14 Sand

