



Chevron U.S.A. Inc.

2410 Camino Ramon, San Ramon, California • Phone (415) 842-9500

Mail Address: P.O. Box 5004, San Ramon, CA 94583-0804

901

33

Marketing Operations

February 27, 1990

D. Moller
Manager, Operations
S. L. Patterson
Area Manager, Operations
C. G. Trimbach
Manager, Engineering

Mr. Gil Wistar
Alameda County
Environmental Health
80 Swan Way, Suite 200
Oakland, California 94621

Re: Chevron SS#9-5542
7007 San Ramon Valley Blvd.
Dublin, CA

Dear Mr. Wistar:

Enclosed we are forwarding informal sampling results for the tank removal and tank pit over excavation at the above referenced site. A formal report prepared by Blaine Tech will be generated and forwarded at a later date.

As indicated in the sampling results, levels of gasoline contaminated soils below the former tank location have been encountered. As we agreed to in our February 14, 1990 telephone conversation, the tank pit was over excavated to a depth of twenty two feet in an attempt to remove identified "hot" spots. Contingent upon completing this agreed to over excavation, you approved backfilling of the excavation which was completed February 16, 1990.

Chevron concurs with the need to perform a follow-up soil and groundwater assessment. We have retained CHEMPRO Inc., a geotechnical consultant, to perform this work. Allowing sufficient time for CHEMPRO to review sampling and site background data, prepare and submit a workplan for your approval, obtain all necessary permits, and perform work, we have placed a May 1, 1990 due date for completion of this work and submittal of a report of findings.

Upon completing full definition of the extent of contamination, CHEMPRO will provide recommendations for appropriate remedial actions.

One final comment, we strongly urge you to reconsidered the requirement you placed on us to over excavate the tank pit to the depths that were requested. Costs for excavation, hauling, and disposal of soils from this site will exceed \$150,000. In some

cases we do agree that over excavation is an efficient approach however, based on the depth to groundwater and the levels of contamination that we were encountering at this site, it was our opinion that insitu treatment was more appropriate. It did not appear that excavation would solve the problem and the incremental accomplishment did not justify the unreasonable expenditure.

We are not arguing against the need to take remedial actions at gasoline contaminated sites. We are only requesting that you allow responsible parties to apply the best technical approach from an overall environmental protection, safety, and cost efficient standpoint. Both responsible parties and regulators should take into consideration factors such as public exposure, safety, and whether treatment instead of disposal is in the publics as well as the environments best interest.

Prior to our next planned tank removal we would like to present a decision criteria plan which will lay out specific actions that will be taken for various conditions encountered during the excavation process. We would greatly appreciate your consideration of this approach.

If you have any questions or comments please do not hesitate to call John Randall at (415) 842 - 9625.

Very Truly Yours,

C. G. Trimbach

JMR/jmr
Enclosure

By


John Randall

SSH 5342 RCIP

#1

Soil Sample results :

Top layer of the tank
hole & lines & waste oil
tank hole (TPH & BTEX only)

*

Note:

All contaminated soil was hauled to Forward Lanfill
for disposal.



February 9, 1990
Sample Log 1313

Table 1: 'BTEX' Results for 7 Soil Sample(s) Identified as
Chevron Facility at 7007 San Ramon Rd, Dublin
Received February 8, 1990

--all concentrations are units of mg/kg--

Sample	0.1 Benz.	10 Tol.	68 Eth. Benz.	175 Xyl.
PL1	.85	.017	.20	1.2
PL2	<.005	<.005	<.005	.012
PL3	.0095	.011	.16	.15
PL4	<.005	<.005	.16	.072
Composite 1	.36	1.7	1.1	8.7
1A				
1B				
1C				
1D				
Composite 2	.22	.58	.75	5.7
2A				
2B				
Composite 3	2.1	4.7	1.6	8.0
3A				
3B				
(Reporting Limit	.005	.005	.005	.005)



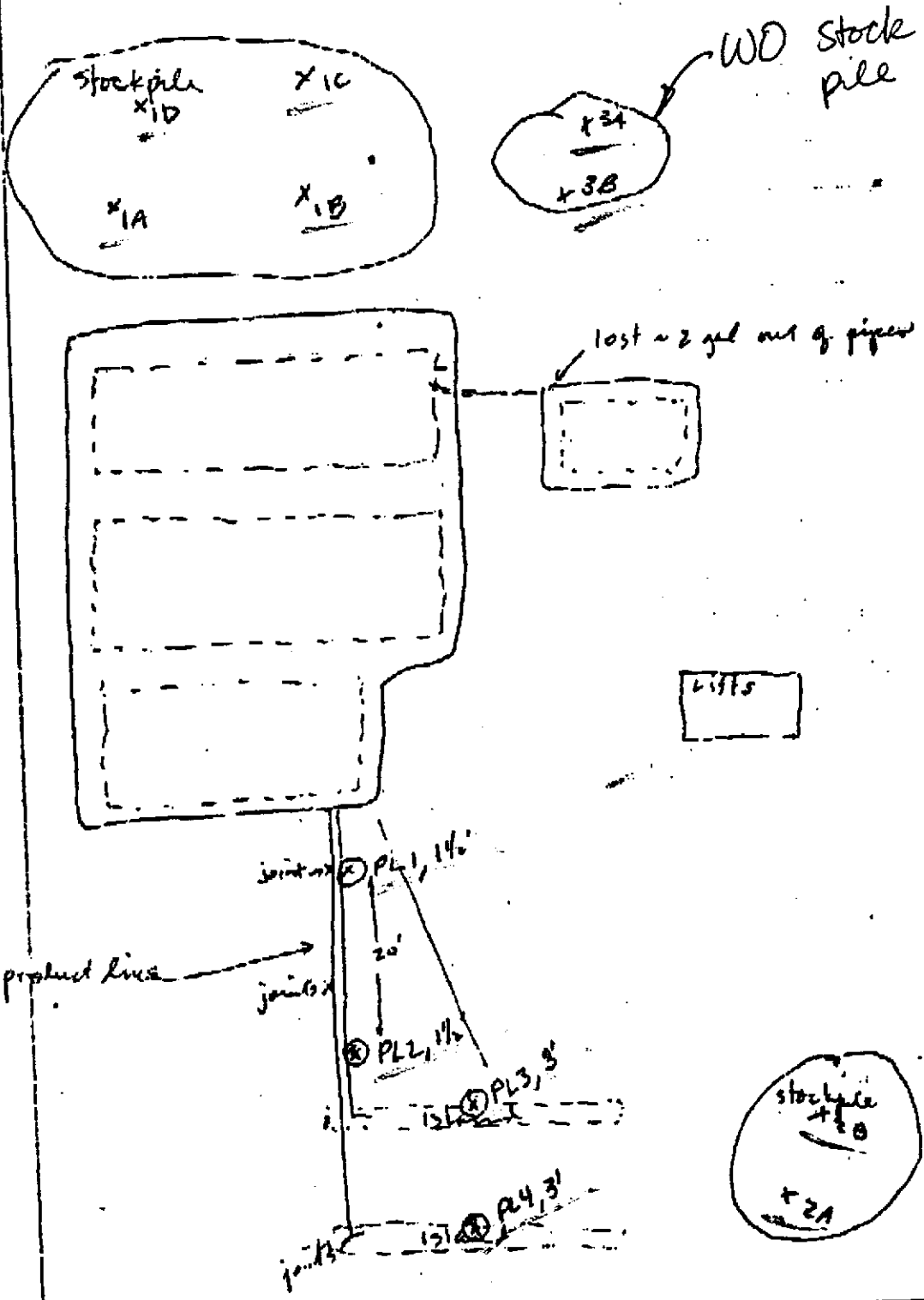
February 9, 1990
Sample Log 1313

Table 2: Gasoline Results for 7 Soil Sample(s) Identified as
Chevron Facility at 7007 San Ramon Rd, Dublin
Received February 8, 1990

--all concentrations are units of mg/kg--

Sample	TPH as Gasoline	100 ppm
PL1	9.0	
PL2	<.5	
PL3	3.9	
PL4	2.8	
Composite 1	200	
1A		
1B		
1C		
1D		
Composite 2	58	
2A		
2B		
Composite 3	61	
3A		
3B		
(Reporting Limit	.5)	

Tank Closure at 7007 San Ramon Rd (Chevron Sta)
Sampling & map by Joel Kiff - W.E.S.T.



San Ramon Rd

SS# 5542 RCIP

#2

Soil sample results:

after tank pull

*TwI
Butter Willow*



February 14, 1990
Sample Log 1322

Lucia Chou
Chevron U.S.A.
2410 Camino Ramon
San Ramon, CA 94583-0804

Subject: Analytical Results for 24 Soil Sample(s)
Identified as: Chevron Facility at 7007 San Ramon Rd, Dublin
Received: February 13, 1990

Dear Ms. Chou:

Analysis of the sample(s) referenced above has been completed. This report is written to confirm results communicated on February 14, 1990 and describes procedures used to analyze the samples.

Samples were received in brass sleeves that were sealed with aluminum foil and plastic endcaps. Each sample was transported and received under documented chain of custody and stored at 4 degrees C until analysis was performed.

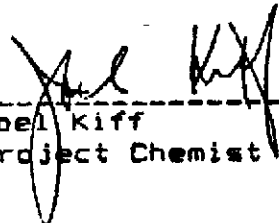
Sample(s) were analyzed for the following:

- "BTEX" (EPA Method 8020/Purge-and-Trap)
- "TPH as Gasoline" (Modified EPA Method 8015/Purge-and-Trap)

Please refer to the following table(s) for summarized analytical results and contact us if you have questions regarding procedures or results. The chain-of-custody document is enclosed.

Submitted by:

Approved by:



Joel Kiff
Project Chemist

Robert G. Smith, Ph.D.
Laboratory Director



February 14, 1990
 Sample Log 1322

Table 1: 'BTEX' Results for 17 Soil Sample(s) Identified as
 Chevron Facility at 7007 San Ramon Rd, Dublin
 Received February 13, 1990

--all concentrations are units of mg/kg--

Sample	Benz.	Tol.	Eth. Benz.	Xyl.
#1	1.8	50	51	360
#2	2.0	210	120	780
#3	.19	.060	.15	.34
#4	8.8	430	130	690
#5	.017	.068	.045	.12
#6	2.2	120	51	300
#7	.0046	.019	<.005	.044
#10	.12	.40	.11	1.1
#11	.046	.40	.13	1.2
#12	.26	2.5	2.5	15
#13	30	360	110	680
#14	29	150	45	240
Composite 1	4.2	82	33	200
Stock 1				
Stock 2				
Stock 3				
Stock 4				
Composite 2	3.0	68	24	160
Stock 5				
Stock 6				
Stock 7				
Stock 8				
(Reporting Limit	.005	.005	.005	.005)



February 14, 1990
Sample Log 1322

B T E X Continued

--all concentrations are units of mg/kg--

Sample	Benz.	Tol.	Eth.Benz.	Xyl.
Composite 3	.39	6.3	8.0	58
Stock 9				
Stock 10				
Stock 11				
Stock 12				
Composite 4	1.1	26	20	150
Stock 13				
Stock 14				
Stock 15				
Stock 16				
Composite 5	.38	1.1	3.6	29
#17				
#18				
#19				
#20				
(Reporting Limit	.005	.005	.005	.005)



February 14, 1990
Sample Log 1322

Table 2: Gasoline Results for 17 Soil Sample(s) Identified as
Chevron Facility at 7007 San Ramon Rd, Dublin
Received February 13, 1990

--all concentrations are units of mg/kg--

Sample	TPH as Gasoline
#1	3100
#2	5000 x
#3	5.9
#4	4800 °
#5	2.4
#6	2900
#7	.55
#10	12
#11	8.6
#12	190
#13	5100 x
#14	2900 °
Composite 1	1400
Stock 1	
Stock 2	
Stock 3	
Stock 4	
Composite 2	1100
Stock 5	
Stock 6	
Stock 7	
Stock 8	

(Reporting Limit .5)

page 4

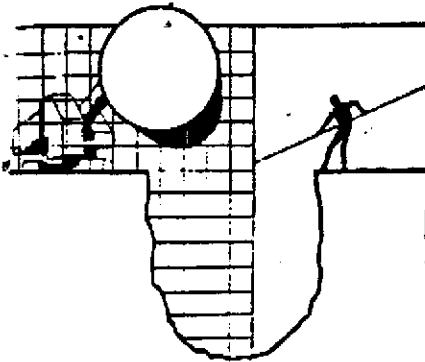


February 14, 1990
Sample Log 1322

TPH as Gasoline Continued

--all concentrations are units of mg/kg--

Sample	TPH as Gasoline
Composite 3	500
Stock 9	
Stock 10	
Stock 11	
Stock 12	
Composite 4	1100
Stock 13	
Stock 14	
Stock 15	
Stock 16	
Composite 5	420
#17	
#18	
#19	
#20	
(Reporting Limit	.5)



BLAINE TECH SERVICES INC.

1370 TULLY RD., SUITE 505
SAN JOSE, CA 95122
(408) 995-5535

FAX TRANSMITTAL
FROM (408) 293-8773

Date 02.14.90
Project CHEONG ST. # 5542

To Lucia Chan

842-9655

Total pages including this
cover sheet: 2

From JOHN KIMAN

For Your USE
 APPROVAL
 INFORMATION

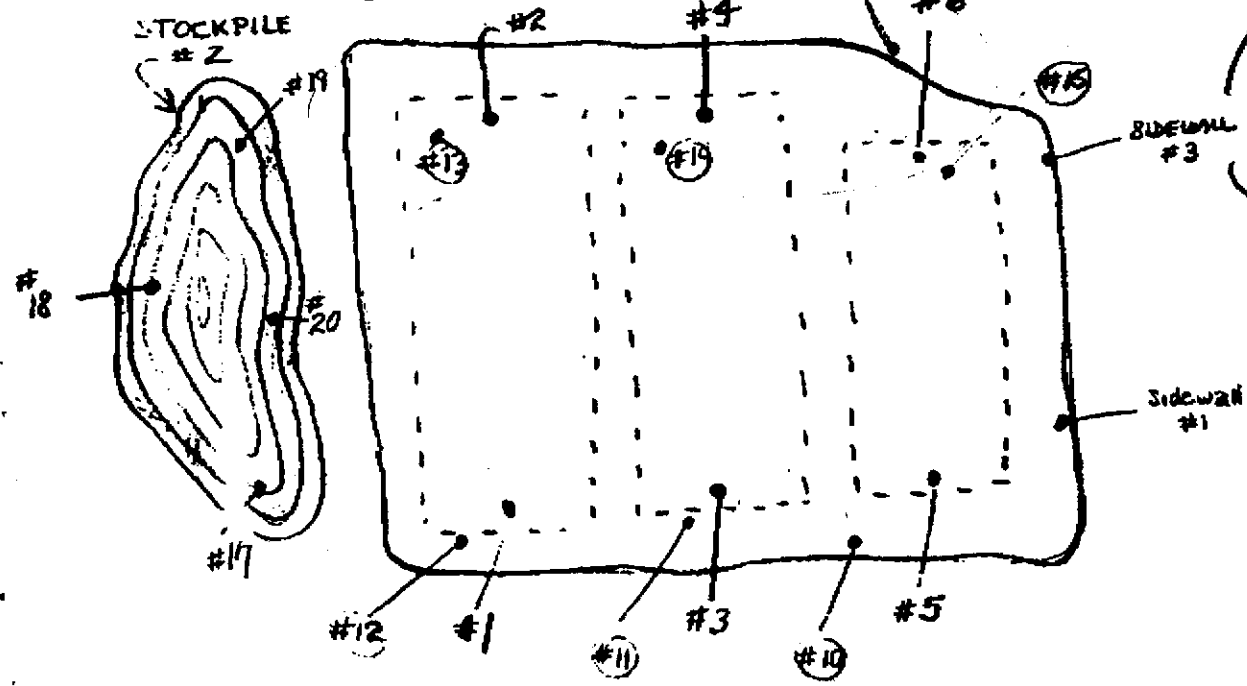
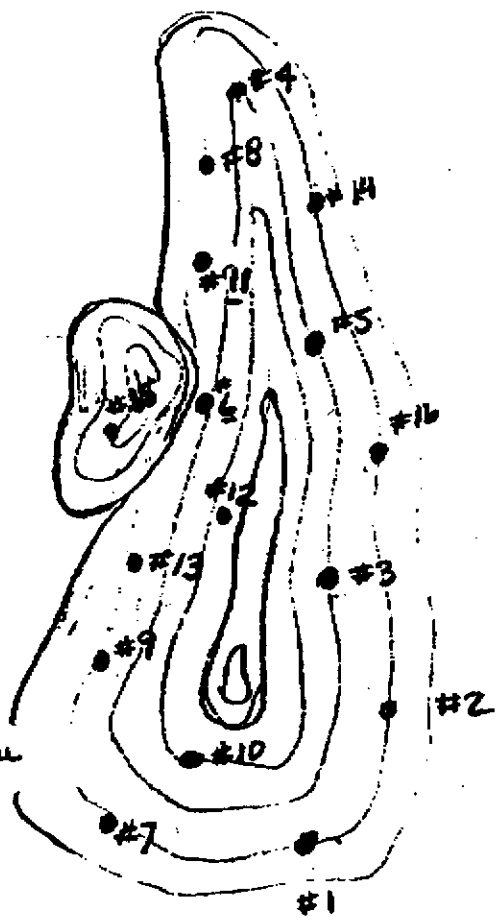
Description of what is being sent:

MAP VIEW OF SAMPLE
LOCATIONS

Comments:

SAMPLE	DEPTH (FT)	SAMPLE	DEPTH
1	11.5	SIDEWALL 1	13.5
2	11.0	SIDEWALL 2	8.3
3	11.0	SIDEWALL 3	7.5
4	11.5		
5	11.0		
6	12.0	STOCK PILE 5	
7	8.0	STOCKPILE #2	
8	10.5	17-20	
9	STOCKPILE		
10	15	STOCKPILE #1	
11	16.0	1-16	
12	16.0		
13	15.5		
14	16.0		
15	16.0		

STOCKPILE #1



CHEVRON
SAN RAMON + DUBLIN

SS#5542 RCIP

#3

Soil sample results:

tank hole : additional 5'

5542 RCIP

#4

Soil sample results:

WO tank hole #7#8

See Blaine Tech sketch

Previous page & Stock

file #3 to come
(also known
as #9)

TPH see results #1

8240

8270

Metals

Total oil + Grease

} to come