



Atlantic Richfield Company
(a BP affiliated company)

P.O. Box 1257
San Ramon, CA 94583
Phone: (925) 275-3801
Fax: (925) 275-3815

April 27, 2009

Re: First Quarter, 2009 Semi-Annual Ground-Water Monitoring Report
Atlantic Richfield Company Station #771
899 Rincon Avenue
Livermore, California
ACEH Case RO0000200

RECEIVED

11:02 am, May 01, 2009

Alameda County
Environmental Health



“I declare, that to the best of my knowledge at the present time, that the information and/or recommendations contained in the attached document are true and correct.”

Submitted by:

Paul Supple
Environmental Business Manager

**First Quarter, 2009 Semi-Annual
Ground-Water Monitoring Report**
Atlantic Richfield Company Station #771
899 Rincon Avenue
Livermore, California

Prepared for

Mr. Paul Supple
Environmental Business Manager
Atlantic Richfield Company
P.O. Box 1257
San Ramon, California 94583

Prepared by



1324 Mangrove Avenue, Suite 212
Chico, California 95926
(530) 566-1400
www.broadbentinc.com

April 2009

Project No. 06-82-608

April 27, 2009

Project No. 06-82-608

Atlantic Richfield Company
P.O. Box 1257
San Ramon, CA 94583
Submitted via ENFOS

Attn.: Mr. Paul Supple

Re: First Quarter, 2009 Semi-Annual Ground-Water Monitoring Report, Atlantic Richfield Company Station #771, 899 Rincon Avenue, Livermore, California. ACEH Case RO0000200.

Dear Mr. Supple:

Attached is the *First Quarter, 2009 Semi-Annual Ground-Water Monitoring Report* for Atlantic Richfield Company Station #771 (herein referred to as Station #771) located at 899 Rincon Avenue, Livermore, California (Property). This report presents a summary of First Quarter, 2008 ground-water monitoring results.


Should you have questions regarding the work performed or results obtained, please do not hesitate to contact us at (530) 566-1400.

Sincerely,

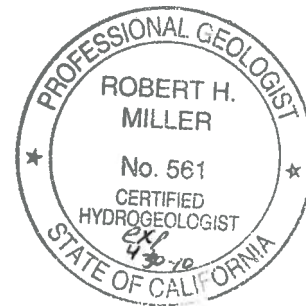
BROADBENT & ASSOCIATES, INC.



Matthew G. Herrick, P.G., C.HG.
Senior Hydrogeologist



Robert H. Miller, P.G., C.HG.
Principal Hydrogeologist



Enclosures

cc: Mr. Paresh Khatri, Alameda County Environmental Health, 1131 Harbor Bay Parkway, Suite 250, Alameda, CA, 94502 (Submitted via ACEH ftp Site)
Mr. Paul M. Smith, Livermore-Pleasanton Fire Department, 3560 Nevada St., Pleasanton, CA 94566
Mr. Chuck Headlee, RWQCB, 1515 Clay St. Suite 1400, Oakland, CA 94612 (Submitted via GeoTracker)
GeoTracker

STATION #771 SEMI-ANNUAL GROUND-WATER MONITORING REPORT

Facility: #771	Address: 899 Rincon Avenue, Livermore, CA
Station #771 Environmental Business Manager:	Mr. Paul Supple
Consulting Co./Contact Persons:	Broadbent & Associates, Inc. (BAI) / Rob Miller & Matt Herrick
Primary Agency/Regulatory ID No.:	Alameda County Environmental Health (ACEH)/ ACEH Case RO0000200
Consultant Project No.:	06-82-608
Facility Permits/Permitting Agency.:	NA

WORK PERFORMED THIS QUARTER (First Quarter, 2009):

1. Submitted Fourth Quarter, 2008 Status Report. Work performed by BAI.
2. Conducted ground-water monitoring/sampling for First Quarter, 2009. Work performed by Stratus Environmental, Inc. (Stratus).
3. Submitted the February 10, 2009 Initial Site Conceptual Model and Soil and Ground-Water Investigation Work Plan.

WORK PROPOSED FOR NEXT QUARTER (Second Quarter, 2009):

1. Submit First Quarter, 2009 Semi-Annual Ground-Water Monitoring Report (contained herein).
2. No environmental work activities are scheduled to be completed on the Property during the Second Quarter, 2009.
3. In accordance with the ACEH March 16, 2009 letter, complete an addendum Soil and Ground-Water Investigation Work Plan. Addendum Work Plan to be submitted by April 30, 2009.

QUARTERLY RESULTS SUMMARY:

Current phase of project:	Monitoring
Frequency of ground-water sampling:	MW-4, MW-7, RW-1 = Semi-Annual (1Q and 3Q) MW-2, MW-5, MW-6, MW-11, VW-1, = Annual (3Q)
Frequency of ground-water monitoring:	Semi-annual (1Q and 3Q)
Is free product (FP) present on-site:	No
FP recovered this quarter:	NA (FP last recovered in 1992)
Cumulative FP recovered:	3.06 gallons, Wells MW-1, MW-2, and MW-5
Current remediation techniques:	Air Diffusion
Depth to ground water (below TOC):	22.00 (VW-1) to 40.52 (MW-8)
General ground-water flow direction:	North
Approximate hydraulic gradient:	0.06 feet per foot

DISCUSSION:

During First Quarter, 2009 gasoline range organics (GRO) were detected in wells MW-4 and RW-1 at concentrations of 110 micrograms per liter ($\mu\text{g/L}$) and 120 $\mu\text{g/L}$, respectively. Benzene was detected in wells MW-4, MW-7, and RW-1 at concentrations ranging from 0.96 $\mu\text{g/L}$ (RW-1) to 1.5 $\mu\text{g/L}$ (MW-7). Methyl tert-butyl ether (MTBE) was detected in wells MW-4 and RW-1 at concentrations of 37

µg/L and 1.6 µg/L, respectively. Tert-butyl alcohol (TBA) was detected in MW-4 at a concentration of 74 µg/L. No other analytes were detected in samples collected during First Quarter, 2009.

Stratus reported that a car was parked over well MW-10 and therefore the well was not gauged for depth to water during First Quarter, 2009.

Analytes detected during First Quarter, 2009 were all within the historic minimum and maximum concentration ranges recorded for each well. Ground-water elevations measured during First Quarter, 2009 were within historic minimum and maximum ranges for each well, with the following exception: ground-water elevation in MW-8 is the lowest level historically measured in the well.

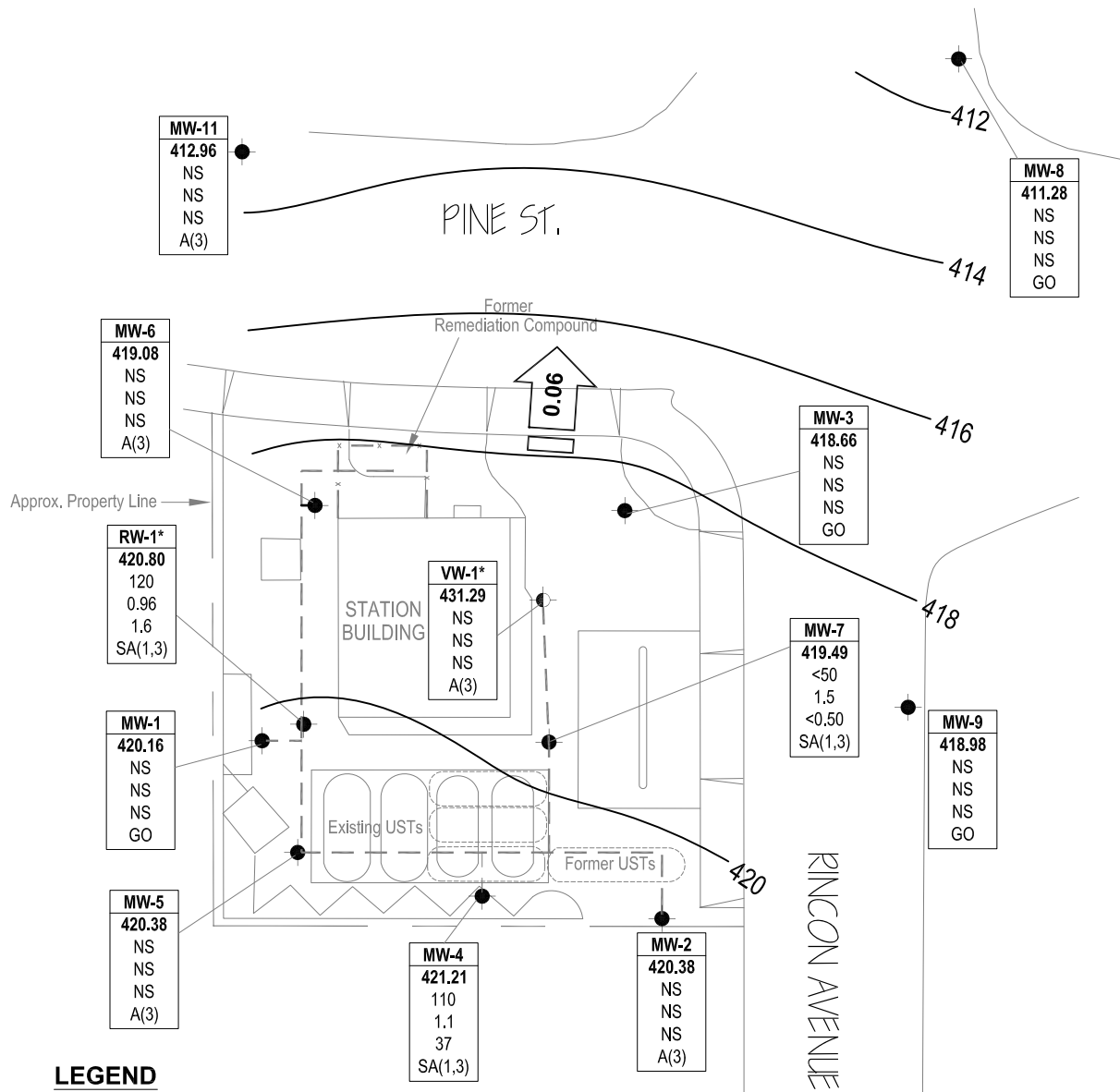
Drawing 1 depicts the ground-water elevation contour and an analytical summary map for the First Quarter, 2009. Table 1 includes a summary of ground-water monitoring data including relative water elevations and laboratory analyses. Table 2 provides a summary of fuel additives analytical data. Table 3 lists historical ground-water flow direction and gradient data.

CLOSURE:

The findings presented in this report are based upon: observations of Stratus field personnel (see Appendix A), the points investigated, and results of laboratory tests performed by Calscience Environmental Laboratories, Inc. (Garden Grove, CA). Our services were performed in accordance with the generally accepted standard of practice at the time this report was written. No other warranty, expressed or implied was made. This report has been prepared for the exclusive use of Atlantic Richfield Company. It is possible that variations in soil or ground-water conditions could exist beyond points explored in this investigation. Also, changes in site conditions could occur in the future due to variations in rainfall, temperature, regional water usage, or other factors.

ATTACHMENTS:

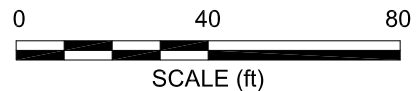
- Drawing 1. Ground-Water Elevation Contour and Analytical Summary Map, Station #771, Livermore, CA
- Table 1. Summary of Ground-Water Monitoring Data: Relative Water Elevations and Laboratory Analyses, Station #771, Livermore, CA
- Table 2. Summary of Fuel Additives Analytical Data, Station #771, Livermore, CA
- Table 3. Historical Ground-Water Flow Direction and Gradient, Station #771, Livermore, CA
- Appendix A. Stratus Environmental, Inc. Ground-Water Sampling Data Package (Includes Field Data Sheets, Non-Hazardous Waste Data Form, Certified Laboratory Analytical Results, Chain of Custody Documentation, and Field Procedures for Groundwater Sampling)
- Appendix B. GeoTracker Upload Confirmation



LEGEND

- Monitoring well location
- ◐ Vapor extraction well location
- Well ID** — Well designation
- ELEV** — Ground-water elevation (ft above MSL)
- GRO** — GRO, Benzene & MTBE concentrations (µg/L)
- Benzene**
- MTBE** — Sampling frequency
- SA or A**
- < — Not detected at or above laboratory reporting limits
- * — Not used in contouring
- NG — Not gauged
- NS — Not sampled
- A(3) — Sampled annually during 3rd quarter
- GO — Not sampled, gauged only
- SA(1,3) — Sampled semi-annually, 1st & 3rd quarters
- 420 — Ground-water elevation contour (ft above MSL)
- ← 0.06 — Approximate ground-water flow direction and gradient (ft/ft)
- Remediation piping

MW-10*
NG
NS
NS
NS
GO



NOTE: SITE MAP ADAPTED FROM URS FIGURES. SITE DIMENSIONS AND FACILITY LOCATIONS NOT VERIFIED.

**Table 1. Summary of Ground-Water Monitoring Data: Relative Water Elevations and Laboratory Analyses
Station #771, 899 Rincon Ave., Livermore, CA**

Well and Sample Date	P/NP	Comments	TOC (feet msl)	Top of Screen (ft bgs)	Bottom of Screen (ft bgs)	DTW (feet bgs)	Water Level Elevation (feet msl)	Concentrations in (µg/L)						DO (mg/L)	pH
								GRO/TPHg	Benzene	Toluene	Ethyl-Benzene	Total Xylenes	MTBE		
MW-1															
3/20/1995	--		451.73	32.00	41.00	24.50	427.23	90,000	1,800	1,100	1,000	5,600	--	--	--
6/2/1995	--		451.73	32.00	41.00	25.60	426.13	81,000	2,000	1,400	990	4,600	--	--	--
8/23/1995	--		451.73	32.00	41.00	29.04	422.69	44,000	2,400	1,900	670	3,800	<300	--	--
12/4/1995	--		451.73	32.00	41.00	31.31	420.42	22,000	870	660	390	2,200	--	--	--
2/20/1996	--		451.73	32.00	41.00	22.26	429.47	21,000	1,500	1,200	650	3,500	<300	--	--
5/15/1996	--		451.73	32.00	41.00	23.42	428.31	36,000	3,000	2,500	960	5,700	<250	--	--
8/13/1996	--		451.73	32.00	41.00	26.83	424.90	19,000	730	580	450	2,500	<200	--	--
11/13/1996	--		451.73	32.00	41.00	31.05	420.68	6,600	47	16	74	160	<30	--	--
3/26/1997	--		451.73	32.00	41.00	26.29	425.44	1,900	100	55	37	200	<30	--	--
5/15/1997	--		451.73	32.00	41.00	28.65	423.08	16,000	490	250	250	1,100	<120	--	--
8/26/1997	--		451.73	32.00	41.00	31.53	420.20	190	6.7	3	6.3	25	<3	--	--
11/5/1997	--		451.73	32.00	41.00	33.93	417.80	63	0.5	<0.5	0.8	2.4	29	--	--
2/18/1998	--		451.73	32.00	41.00	20.46	431.27	23,000	1,500	610	550	3,000	<120	--	--
5/20/1998	--		451.73	32.00	41.00	23.84	427.89	50,000	4,400	1,900	1,400	80,000	<300	--	--
7/30/1998	P		451.73	32.00	41.00	26.94	424.79	150	<0.5	<0.5	<0.5	1.6	<3	8.74	--
10/29/1998	NP		451.73	32.00	41.00	32.58	419.15	<50	<0.5	<0.5	<0.5	1.8	<3	2.0	--
3/16/1999	P		451.73	32.00	41.00	26.20	425.53	3,200	160	32	89	390	270	2.0	--
5/5/1999	P		451.73	32.00	41.00	27.57	424.16	3,600	140	46	76	290	170	11.65	--
8/26/1999	P		451.73	32.00	41.00	30.25	421.48	3,200	210	29	100	220	120	1.43	--
12/3/1999	NP		451.73	32.00	41.00	32.70	419.03	53	<0.5	<0.5	<0.5	1	<3	2.12	--
3/13/2000	P		451.73	32.00	41.00	24.45	427.28	<50	<0.5	<0.5	<0.5	<1	<3	5.81	--
6/20/2000	--	b	451.73	32.00	41.00	--	--	67.4	3.88	<0.500	1.78	1.48	<2.50	--	--
6/20/2000	P		451.73	32.00	41.00	27.79	423.94	356	40.1	7.17	11.9	22.7	<2.50	5.1	--
8/31/2000	--		451.73	32.00	41.00	30.35	421.38	--	--	--	--	--	--	--	--
2/9/2001	--		451.73	32.00	41.00	30.95	420.78	--	--	--	--	--	--	--	--
9/17/2001	--		451.73	32.00	41.00	30.85	420.88	--	--	--	--	--	--	--	--
1/21/2002	--		451.73	32.00	41.00	30.61	421.12	--	--	--	--	--	--	--	--
7/19/2002	--		451.73	32.00	41.00	31.55	420.18	--	--	--	--	--	--	--	--
1/15/2003	--		451.73	32.00	41.00	22.99	428.74	--	--	--	--	--	--	--	--
7/9/2003	--		451.73	32.00	41.00	30.35	421.38	--	--	--	--	--	--	--	--
02/19/2004	--		451.73	32.00	41.00	26.24	425.49	--	--	--	--	--	--	--	--

Table 1. Summary of Ground-Water Monitoring Data: Relative Water Elevations and Laboratory Analyses

Station #771, 899 Rincon Ave., Livermore, CA

Well and Sample Date	P/NP	Comments	TOC (feet msl)	Top of Screen (ft bgs)	Bottom of Screen (ft bgs)	DTW (feet bgs)	Water Level Elevation (feet msl)	Concentrations in (µg/L)						DO (mg/L)	pH
								GRO/TPHg	Benzene	Toluene	Ethyl-Benzene	Total Xylenes	MTBE		
MW-1 Cont.															
08/04/2004	--		454.23	32.00	41.00	26.36	427.87	--	--	--	--	--	--	--	--
01/18/2005	--		454.23	32.00	41.00	24.47	429.76	--	--	--	--	--	--	--	--
07/15/2005	--		454.23	32.00	41.00	29.44	424.79	--	--	--	--	--	--	--	--
01/10/2006	--		454.23	32.00	41.00	22.58	431.65	--	--	--	--	--	--	--	--
7/21/2006	--		454.23	32.00	41.00	20.73	433.50	--	--	--	--	--	--	--	--
1/17/2007	--		454.23	32.00	41.00	31.88	422.35	--	--	--	--	--	--	--	--
7/18/2007	--		454.23	32.00	41.00	32.85	421.38	--	--	--	--	--	--	--	--
1/15/2008	--		454.23	32.00	41.00	28.76	425.47	--	--	--	--	--	--	--	--
7/7/2008	--		454.23	32.00	41.00	35.56	418.67	--	--	--	--	--	--	--	--
1/7/2009	--		454.23	32.00	41.00	34.07	420.16	--	--	--	--	--	--	--	--
MW-2															
3/20/1995	--		449.49	30.00	38.00	20.27	429.22	54,000	2,600	1,600	1,200	7,600	--	--	--
6/2/1995	--		449.49	30.00	38.00	22.32	427.17	37,000	2,200	800	980	4,800	--	--	--
8/23/1995	--		449.49	30.00	38.00	25.69	423.80	65,000	1,100	310	840	3,000	<500	--	--
12/4/1995	--		449.49	30.00	38.00	28.52	420.97	19,000	680	150	410	1,600	--	--	--
2/20/1996	--		449.49	30.00	38.00	19.00	430.49	22,000	1,200	240	590	2,200	<300	--	--
5/15/1996	--		449.49	30.00	38.00	20.03	429.46	25,000	1,200	240	610	2,100	<300	--	--
8/13/1996	--		449.49	30.00	38.00	24.44	425.05	19,000	640	110	420	1,200	<300	--	--
11/13/1996	--		449.49	30.00	38.00	28.42	421.07	15,000	260	52	220	640	<200	--	--
3/26/1997	--		449.49	30.00	38.00	22.98	426.51	17,000	580	120	360	980	<120	--	--
5/15/1997	--		449.49	30.00	38.00	25.40	424.09	18,000	420	63	340	730	<120	--	--
8/26/1997	--		449.49	30.00	38.00	28.38	421.11	5,300	210	26	140	270	<120	--	--
11/5/1997	--		449.49	30.00	38.00	31.93	417.56	560	42	2.6	7	9	<40	--	--
2/18/1998	--		449.49	30.00	38.00	16.87	432.62	18,000	710	120	480	1,100	130	--	--
5/20/1998	--		449.49	30.00	38.00	20.29	429.20	16,000	480	72	440	1,100	<120	--	--
7/30/1998	P		449.49	30.00	38.00	23.51	425.98	9,700	240	33	210	490	<120	9.21	--
10/29/1998	NP		449.49	30.00	38.00	30.08	419.41	58	<0.5	<0.5	<0.5	1.2	<3	1.0	--
3/16/1999	P		449.49	30.00	38.00	23.22	426.27	4,700	120	13	90	220	60	2.0	--
5/5/1999	P		449.49	30.00	38.00	24.05	425.44	5,500	58	7.1	58	98	17	9.09	--
8/26/1999	P		449.49	30.00	38.00	26.44	423.05	3,700	55	11	60	64	26	1.9	--

Table 1. Summary of Ground-Water Monitoring Data: Relative Water Elevations and Laboratory Analyses
Station #771, 899 Rincon Ave., Livermore, CA

Well and Sample Date	P/NP	Comments	TOC (feet msl)	Top of Screen (ft bgs)	Bottom of Screen (ft bgs)	DTW (feet bgs)	Water Level Elevation (feet msl)	Concentrations in (µg/L)						DO (mg/L)	pH
								GRO/TPHg	Benzene	Toluene	Ethyl-Benzene	Total Xylenes	MTBE		
MW-2 Cont.															
12/3/1999	NP		449.49	30.00	38.00	30.15	419.34	130	<0.5	<0.5	0.7	1.8	<3	1.96	--
3/13/2000	P		449.49	30.00	38.00	20.68	428.81	<50	<0.5	<0.5	<0.5	<1	<3	--	--
6/20/2000	P		449.49	30.00	38.00	23.08	426.41	226	2.2	<0.500	4.83	7.88	<2.50	4.9	--
8/31/2000	P		449.49	30.00	38.00	26.71	422.78	87.1	1.78	<0.500	1.33	1.15	<2.50	1.59	--
2/9/2001	--		449.49	30.00	38.00	29.65	419.84	--	--	--	--	--	--	--	--
9/17/2001	P		449.49	30.00	38.00	27.62	421.87	3,100	300	12	8.8	18	120	1.7	--
1/21/2002	--		449.49	30.00	38.00	27.09	422.40	--	--	--	--	--	--	--	--
7/19/2002	P	a	449.49	30.00	38.00	27.82	421.67	4,700	280	13	120	19	16	0.8	7.4
1/15/2003	--		449.49	30.00	38.00	22.18	427.31	--	--	--	--	--	--	--	--
7/9/2003	--		449.49	30.00	38.00	26.40	423.09	3,900	170	<5.0	100	19	39	2.5	7.0
02/19/2004	--		449.49	30.00	38.00	23.85	425.64	--	--	--	--	--	--	--	--
08/04/2004	P		452.05	30.00	38.00	24.71	427.34	5,400	650	21	160	56	78	0.8	7.2
01/18/2005	--		452.05	30.00	38.00	20.86	431.19	--	--	--	--	--	--	--	--
07/15/2005	P		452.05	30.00	38.00	25.92	426.13	5,200	160	5.3	56	10	46	3.1	6.9
01/10/2006	--		452.05	30.00	38.00	19.25	432.80	--	--	--	--	--	--	--	--
7/21/2006	P		452.05	30.00	38.00	25.73	426.32	120	0.90	<0.50	<0.50	<0.50	<0.50	6.08	8.3
1/17/2007	--		452.05	30.00	38.00	28.70	423.35	--	--	--	--	--	--	--	--
7/18/2007	P		452.05	30.00	38.00	29.07	422.98	2,300	58	2.4	9.5	3.5	45	1.19	7.51
1/15/2008	--		452.05	30.00	38.00	24.65	427.40	--	--	--	--	--	--	--	--
7/7/2008	NP		452.05	30.00	38.00	32.41	419.64	3,600	28	<5.0	<5.0	<5.0	19	2.81	7.24
1/7/2009	--		452.05	30.00	38.00	31.67	420.38	--	--	--	--	--	--	--	--
MW-3															
3/20/1995	--		450.28	32.00	40.00	22.19	428.09	94	<0.5	<0.5	<0.5	<0.5	--	--	--
6/2/1995	--		450.28	32.00	40.00	23.28	427.00	72	<0.5	<0.5	<0.5	<0.5	--	--	--
8/23/1995	--		450.28	32.00	40.00	26.55	423.73	98	<0.5	<0.5	<0.6	0.5	<3	--	--
12/4/1995	--		450.28	32.00	40.00	29.52	420.76	<50	<0.5	<0.5	<0.5	<0.5	--	--	--
2/20/1996	--		450.28	32.00	40.00	19.83	430.45	130	<0.5	<0.5	<0.5	<0.5	<3	--	--
5/15/1996	--		450.28	32.00	40.00	21.03	429.25	120	<0.5	<0.5	<0.5	<0.5	<0.5	--	--
8/13/1996	--		450.28	32.00	40.00	25.67	424.61	<50	<0.5	<0.5	<0.5	<0.5	<3	--	--
11/13/1996	--		450.28	32.00	40.00	21.57	428.71	<50	<0.5	<0.5	<0.5	<0.5	<3	--	--

Table 1. Summary of Ground-Water Monitoring Data: Relative Water Elevations and Laboratory Analyses
Station #771, 899 Rincon Ave., Livermore, CA

Well and Sample Date	P/NP	Comments	TOC (feet msl)	Top of Screen (ft bgs)	Bottom of Screen (ft bgs)	DTW (feet bgs)	Water Level Elevation (feet msl)	Concentrations in (µg/L)						DO (mg/L)	pH
								GRO/TPHg	Benzene	Toluene	Ethyl-Benzene	Total Xylenes	MTBE		
MW-3 Cont.															
3/26/1997	--		450.28	32.00	40.00	24.15	426.13	<50	1.1	<0.5	<0.5	<0.5	<3	--	--
5/15/1997	--		450.28	32.00	40.00	26.85	423.43	<50	<0.5	<0.5	<0.5	<0.5	<3	--	--
8/26/1997	--		450.28	32.00	40.00	30.07	420.21	<50	<0.5	<0.5	<0.5	<0.5	<3	--	--
11/5/1997	--		450.28	32.00	40.00	32.46	417.82	<50	<0.5	0.7	<0.5	<0.5	<3	--	--
2/18/1998	--		450.28	32.00	40.00	17.82	432.46	<50	<0.5	<0.5	<0.5	<0.5	<3	--	--
5/20/1998	--		450.28	32.00	40.00	21.41	428.87	<50	<0.5	<0.5	<0.5	<0.5	<3	--	--
7/30/1998	P		450.28	32.00	40.00	26.41	423.87	<50	<0.5	<0.5	<0.5	<0.5	<3	9.56	--
10/29/1998	P		450.28	32.00	40.00	31.33	418.95	<50	<0.5	<0.5	<0.5	<0.5	<3	1.0	--
3/16/1999	P		450.28	32.00	40.00	24.61	425.67	<50	<0.5	<0.5	<0.5	<0.5	<3	1.0	--
5/5/1999	P		450.28	32.00	40.00	25.75	424.53	140	<0.5	<0.5	0.6	<0.5	<3	4.43	--
8/26/1999	P		450.28	32.00	40.00	28.49	421.79	80	0.6	0.6	0.6	1	<3	1.69	--
12/3/1999	P		450.28	32.00	40.00	31.45	418.83	<50	<0.5	<0.5	<0.5	<1	<3	2.26	--
3/13/2000	P		450.28	32.00	40.00	22.18	428.10	<50	<0.5	<0.5	<0.5	<1	<3	4.41	--
6/20/2000	P		450.28	32.00	40.00	26.03	424.25	<50.0	<0.500	<0.500	<0.500	<0.500	<2.50	2.3	--
8/31/2000	--		450.28	32.00	40.00	28.75	421.53	--	--	--	--	--	--	--	--
2/9/2001	--		450.28	32.00	40.00	31.04	419.24	--	--	--	--	--	--	--	--
9/17/2001	--		450.28	32.00	40.00	29.04	421.24	--	--	--	--	--	--	--	--
1/21/2002	--		450.28	32.00	40.00	28.81	421.47	--	--	--	--	--	--	--	--
7/19/2002	--		450.28	32.00	40.00	28.92	421.36	--	--	--	--	--	--	--	--
1/15/2003	--		450.28	32.00	40.00	22.88	427.40	--	--	--	--	--	--	--	--
7/9/2003	--		450.28	32.00	40.00	28.00	422.28	--	--	--	--	--	--	--	--
02/19/2004	--		450.28	32.00	40.00	25.29	424.99	--	--	--	--	--	--	--	--
08/04/2004	--		452.75	32.00	40.00	27.40	425.35	--	--	--	--	--	--	--	--
01/18/2005	--		452.75	32.00	40.00	22.76	429.99	--	--	--	--	--	--	--	--
07/15/2005	--		452.75	32.00	40.00	25.95	426.80	--	--	--	--	--	--	--	--
01/10/2006	--		452.75	32.00	40.00	21.18	431.57	--	--	--	--	--	--	--	--
7/21/2006	--		452.75	32.00	40.00	25.73	427.02	--	--	--	--	--	--	--	--
1/17/2007	--		452.75	32.00	40.00	30.51	422.24	--	--	--	--	--	--	--	--
7/18/2007	--		452.75	32.00	40.00	29.53	423.22	--	--	--	--	--	--	--	--
1/15/2008	--		452.75	32.00	40.00	27.65	425.10	--	--	--	--	--	--	--	--
7/7/2008	--		452.75	32.00	40.00	33.38	419.37	--	--	--	--	--	--	--	--

Table 1. Summary of Ground-Water Monitoring Data: Relative Water Elevations and Laboratory Analyses

Station #771, 899 Rincon Ave., Livermore, CA

Well and Sample Date	P/NP	Comments	TOC (feet msl)	Top of Screen (ft bgs)	Bottom of Screen (ft bgs)	DTW (feet bgs)	Water Level Elevation (feet msl)	Concentrations in (µg/L)						DO (mg/L)	pH
								GRO/TPHg	Benzene	Toluene	Ethyl-Benzene	Total Xylenes	MTBE		
MW-3 Cont.															
1/7/2009	--		452.75	32.00	40.00	34.09	418.66	--	--	--	--	--	--	--	--
MW-4															
3/20/1995	--		451.09	26.00	42.00	22.68	428.41	12,000	1,000	100	450	700	--	--	--
6/2/1995	--		451.09	26.00	42.00	24.41	426.68	9,000	850	56	380	430	--	--	--
8/23/1995	--		451.09	26.00	42.00	27.72	423.37	5,300	400	25	240	170	<100	--	--
12/4/1995	--		451.09	26.00	42.00	29.85	421.24	6,700	100	<10	90	38	--	--	--
2/20/1996	--		451.09	26.00	42.00	21.16	429.93	7,000	360	22	180	160	<70	--	--
5/15/1996	--		451.09	26.00	42.00	22.18	428.91	--	--	--	--	--	--	--	--
8/13/1996	--		451.09	26.00	42.00	26.20	424.89	--	--	--	--	--	--	--	--
11/13/1996	--		451.09	26.00	42.00	29.72	421.37	--	--	--	--	--	--	--	--
3/26/1997	--		451.09	26.00	42.00	21.86	429.23	8,900	390	33	200	250	<70	--	--
5/15/1997	--		451.09	26.00	42.00	26.92	424.17	--	--	--	--	--	--	--	--
8/26/1997	--		451.09	26.00	42.00	29.30	421.79	--	--	--	--	--	--	--	--
11/5/1997	--		451.09	26.00	42.00	32.14	418.95	--	--	--	--	--	--	--	--
2/18/1998	--		451.09	26.00	42.00	19.30	431.79	5,300	220	19	160	130	120	--	--
5/20/1998	--		451.09	26.00	42.00	22.40	428.69	--	--	--	--	--	--	--	--
7/30/1998	--		451.09	26.00	42.00	25.74	425.35	--	--	--	--	--	--	--	--
10/29/1998	--		451.09	26.00	42.00	31.26	419.83	--	--	--	--	--	--	--	--
3/16/1999	P		451.09	26.00	42.00	25.05	426.04	1,900	49	<5	43	<5	82	1.5	--
5/5/1999	--		451.09	26.00	42.00	26.15	424.94	--	--	--	--	--	--	--	--
8/26/1999	--		451.09	26.00	42.00	28.60	422.49	--	--	--	--	--	--	1.43	--
12/3/1999	--		451.09	26.00	42.00	31.53	419.56	--	--	--	--	--	--	--	--
3/13/2000	P		451.09	26.00	42.00	23.61	427.48	<50	<0.5	<0.5	<0.5	<1	<3	3.82	--
6/20/2000	--		451.09	26.00	42.00	26.38	424.71	--	--	--	--	--	--	0.4	--
8/31/2000	NP		451.09	26.00	42.00	29.55	421.54	<50.0	<0.500	<0.500	<0.500	<0.500	<2.50	1.04	--
2/9/2001	NP		451.09	26.00	42.00	30.30	420.79	<50.0	<0.500	<0.500	<0.500	<0.500	<2.50	1.39	--
9/17/2001	NP		451.09	26.00	42.00	29.90	421.19	3,400	51	<5.0	16	23	360	0.92	--
1/21/2002	NP		451.09	26.00	42.00	29.51	421.58	1,900	140	12	27	48	300	1.03	--
7/19/2002	NP	a	451.09	26.00	42.00	30.77	420.32	2,700	150	9.9	<5.0	<5.0	130	1.0	7.3
1/15/2003	--	a	451.09	26.00	42.00	23.56	427.53	4,800	150	5.3	28	46	150	1.3	7.0

Table 1. Summary of Ground-Water Monitoring Data: Relative Water Elevations and Laboratory Analyses

Station #771, 899 Rincon Ave., Livermore, CA

Well and Sample Date	P/NP	Comments	TOC (feet msl)	Top of Screen (ft bgs)	Bottom of Screen (ft bgs)	DTW (feet bgs)	Water Level Elevation (feet msl)	Concentrations in (µg/L)						DO (mg/L)	pH
								GRO/TPHg	Benzene	Toluene	Ethyl-Benzene	Total Xylenes	MTBE		
MW-4 Cont.															
7/9/2003	--		451.09	26.00	42.00	29.50	421.59	3,000	210	9.4	6	20	150	2.0	6.9
02/19/2004	P	c	451.09	26.00	42.00	26.35	424.74	4,800	270	11	25	19	180	1.8	6.2
08/04/2004	NP		453.80	26.00	42.00	26.48	427.32	4,200	410	13	49	59	300	0.7	6.7
01/18/2005	P		453.80	26.00	42.00	23.15	430.65	4,500	250	9.5	62	22	160	1.2	6.9
07/15/2005	NP		453.80	26.00	42.00	28.13	425.67	3,500	230	6.1	19	15	230	0.5	7.0
01/10/2006	P		453.80	26.00	42.00	21.49	432.31	5,500	250	7.6	37	25	190	1.3	7.1
7/21/2006	NP		453.80	26.00	42.00	28.88	424.92	66	0.60	<0.50	0.52	0.82	3.1	4.75	8.3
1/17/2007	NP		453.80	26.00	42.00	30.80	423.00	<50	<0.50	<0.50	<0.50	<0.50	11	6.19	8.03
7/18/2007	NP		453.80	26.00	42.00	32.00	421.80	2,400	140	6.8	1.3	4.1	74	5.03	7.12
1/15/2008	NP	f (MTBE)	453.80	26.00	42.00	27.30	426.50	220	1.2	<0.50	<0.50	0.50	61	3.29	6.94
7/7/2008	NP		453.80	26.00	42.00	34.78	419.02	<50	3.1	<0.50	<0.50	0.66	17	4.03	7.26
1/7/2009	NP		453.80	26.00	42.00	32.59	421.21	110	1.1	<0.50	<0.50	<0.50	37	2.79	7.26
MW-5															
3/20/1995	--		451.40	31.50	41.00	23.20	428.20	26,000	1,300	180	890	2,900	--	--	--
6/2/1995	--		451.40	31.50	41.00	24.80	426.60	39,000	940	160	740	1,900	--	--	--
8/23/1995	--		451.40	31.50	41.00	28.10	423.30	14,000	490	74	250	890	<300	--	--
12/4/1995	--		451.40	31.50	41.00	29.83	421.57	7,600	230	13	61	80	--	--	--
2/20/1996	--		451.40	31.50	41.00	21.63	429.77	4,300	220	12	45	130	<50	--	--
5/15/1996	--		451.40	31.50	41.00	22.87	428.53	2,200	380	17	58	84	<40	--	--
8/13/1996	--		451.40	31.50	41.00	26.48	424.92	1,700	150	16	24	35	47	--	--
11/13/1996	--		451.40	31.50	41.00	29.68	421.72	850	150	11	19	37	66	--	--
3/26/1997	--		451.40	31.50	41.00	25.14	426.26	2,400	440	21	79	210	68	--	--
5/15/1997	--		451.40	31.50	41.00	27.38	424.02	3,900	510	19	140	240	48	--	--
8/26/1997	--		451.40	31.50	41.00	29.89	421.51	76	4.9	<0.5	1.5	2	9	--	--
11/5/1997	--		451.40	31.50	41.00	32.57	418.83	63	0.8	<0.5	<0.5	1.2	34	--	--
2/18/1998	--		451.40	31.50	41.00	19.99	431.41	6,200	630	70	320	640	320	--	--
5/20/1998	--		451.40	31.50	41.00	23.21	428.19	2,300	340	21	110	140	62	--	--
7/30/1998	P		451.40	31.50	41.00	26.19	425.21	<50	0.8	<0.5	0.6	0.9	<3	8.83	--
10/29/1998	NP		451.40	31.50	41.00	31.92	419.48	<50	<0.5	<0.5	<0.5	<0.5	<3	2.0	--
3/16/1999	P		451.40	31.50	41.00	25.80	425.60	1,300	170	8	59	65	120	2.0	--

Table 1. Summary of Ground-Water Monitoring Data: Relative Water Elevations and Laboratory Analyses

Station #771, 899 Rincon Ave., Livermore, CA

Well and Sample Date	P/NP	Comments	TOC (feet msl)	Top of Screen (ft bgs)	Bottom of Screen (ft bgs)	DTW (feet bgs)	Water Level Elevation (feet msl)	Concentrations in (µg/L)						DO (mg/L)	pH
								GRO/TPHg	Benzene	Toluene	Ethyl-Benzene	Total Xylenes	MTBE		
MW-5 Cont.															
5/5/1999	P		451.40	31.50	41.00	27.09	424.31	320	31	1.1	13	13	19	12.09	--
8/26/1999	P		451.40	31.50	41.00	29.67	421.73	260	13	1.7	4.2	6.3	150	1.31	--
12/3/1999	--	d	451.40	31.50	41.00	--	--	--	--	--	--	--	--	--	--
3/13/2000	P		451.40	31.50	41.00	24.51	426.89	<50	<0.5	<0.5	<0.5	<1	<3	4.41	--
6/20/2000	P		451.40	31.50	41.00	27.37	424.03	60.8	4.84	<0.500	1.9	1.59	<2.50	5.3	--
8/31/2000	P		451.40	31.50	41.00	30.21	421.19	<50.0	1.18	<0.500	<0.500	<0.500	3.83	0.97	--
2/9/2001	--		451.40	31.50	41.00	30.19	421.21	--	--	--	--	--	--	--	--
9/17/2001	P		451.40	31.50	41.00	30.71	420.69	2,700	120	10	90	77	330	0.81	--
1/21/2002	--		451.40	31.50	41.00	30.40	421.00	--	--	--	--	--	--	--	--
7/19/2002	P	a	451.40	31.50	41.00	31.93	419.47	1,600	170	7	120	<5.0	180	1.7	7.2
1/15/2003	--		451.40	31.50	41.00	23.12	428.28	--	--	--	--	--	--	--	--
7/9/2003	--		451.40	31.50	41.00	30.95	420.45	2,000	160	5.7	67	27	260	1.5	6.9
02/19/2004	--		451.40	31.50	41.00	26.73	424.67	--	--	--	--	--	--	--	--
08/04/2004	P		453.52	31.50	41.00	26.61	426.91	2,100	250	5.3	73	22	250	2.7	7.0
01/18/2005	--		453.52	31.50	41.00	24.10	429.42	--	--	--	--	--	--	--	--
07/15/2005	P		453.52	31.50	41.00	29.27	424.25	1,600	61	<5.0	8.7	<5.0	270	2.1	6.9
01/10/2006	--		453.52	31.50	41.00	22.19	431.33	--	--	--	--	--	--	--	--
7/21/2006	P		453.52	31.50	41.00	30.36	423.16	2,100	29	<5.0	7.5	11	14	2.98	7.1
1/17/2007	--		453.52	31.50	41.00	31.77	421.75	--	--	--	--	--	--	--	--
7/18/2007	NP		453.52	31.50	41.00	33.42	420.10	470	36	0.84	0.97	2.2	110	1.73	7.50
1/15/2008	--		453.52	31.50	41.00	28.60	424.92	--	--	--	--	--	--	--	--
7/7/2008	NP		453.52	31.50	41.00	35.80	417.72	<50	<0.50	<0.50	<0.50	<0.50	<0.50	7.55	7.79
1/7/2009	--		453.52	31.50	41.00	33.14	420.38	--	--	--	--	--	--	--	--
MW-6															
3/20/1995	--		451.37	32.00	42.00	25.19	426.18	2,600	210	87	82	140	--	--	--
6/2/1995	--		451.37	32.00	42.00	25.75	425.62	1,600	55	7.9	40	26	--	--	--
8/23/1995	--		451.37	32.00	42.00	29.53	421.84	1,400	42	2.5	36	13	<20	--	--
12/4/1995	--		451.37	32.00	42.00	32.28	419.09	2,500	52	5.8	59	13	--	--	--
2/20/1996	--		451.37	32.00	42.00	22.27	429.10	2,500	120	16	73	12	<30	--	--
5/15/1996	--		451.37	32.00	42.00	23.86	427.51	2,000	71	6.4	47	25	<15	--	--

Table 1. Summary of Ground-Water Monitoring Data: Relative Water Elevations and Laboratory Analyses

Station #771, 899 Rincon Ave., Livermore, CA

Well and Sample Date	P/NP	Comments	TOC (feet msl)	Top of Screen (ft bgs)	Bottom of Screen (ft bgs)	DTW (feet bgs)	Water Level Elevation (feet msl)	Concentrations in (µg/L)						DO (mg/L)	pH
								GRO/TPHg	Benzene	Toluene	Ethyl-Benzene	Total Xylenes	MTBE		
MW-6 Cont.															
8/13/1996	--		451.37	32.00	42.00	28.55	422.82	3,800	91	8.2	69	25	<20	--	--
11/13/1996	--		451.37	32.00	42.00	32.04	419.33	1,900	55	3.3	55	8.5	16	--	--
3/26/1997	--		451.37	32.00	42.00	26.84	424.53	1,800	51	5	32	15	<30	--	--
5/15/1997	--		451.37	32.00	42.00	29.58	421.79	2,400	46	3	29	9	<12	--	--
8/26/1997	--		451.37	32.00	42.00	32.67	418.70	1,400	61	6	33	10	<12	--	--
11/5/1997	--		451.37	32.00	42.00	34.62	416.75	690	29	2.7	18	3.4	9	--	--
2/18/1998	--		451.37	32.00	42.00	20.09	431.28	1,800	74	5	24	12	19	--	--
5/20/1998	--		451.37	32.00	42.00	24.05	427.32	1,900	280	4	31	16	9	--	--
7/30/1998	P		451.37	32.00	42.00	28.72	422.65	2,300	110	7	36	20	<15	--	--
10/29/1998	P		451.37	32.00	42.00	32.77	418.60	2,500	14	13	17	12	<12	1.0	--
3/16/1999	P		451.37	32.00	42.00	26.45	424.92	1,200	65	4	27	13	18	0.5	--
5/5/1999	P		451.37	32.00	42.00	27.86	423.51	2,200	53	4	26	6	25	5.59	--
8/26/1999	P		451.37	32.00	42.00	30.49	420.88	1,100	11	6	10	4	13	2.35	--
12/3/1999	P		451.37	32.00	42.00	32.35	419.02	370	<0.5	<0.5	0.8	<1	4	2.36	--
3/13/2000	P		451.37	32.00	42.00	28.36	423.01	54	2.1	0.5	0.9	1.4	<3	4.22	--
6/20/2000	P		451.37	32.00	42.00	28.35	423.02	195	1.83	<0.500	0.528	<0.500	<2.50	3.5	--
8/31/2000	P		451.37	32.00	42.00	30.20	421.17	276	3.52	0.788	1.15	0.621	8.73	7.0	--
2/9/2001	--	b	451.37	32.00	42.00	--	--	222	4.49	2.73	0.579	0.523	57.1	--	--
2/9/2001	P		451.37	32.00	42.00	30.70	420.67	253	5.44	2.93	0.924	0.977	48.9	0.59	--
9/17/2001	--	b	451.37	32.00	42.00	--	--	<50	<0.50	<0.50	<0.50	<0.50	<2.5	--	--
9/17/2001	P		451.37	32.00	42.00	30.94	420.43	<50	<0.50	<0.50	<0.50	<0.50	<2.5	2.79	--
1/21/2002	P		451.37	32.00	42.00	30.55	420.82	<50	<0.50	<0.50	<0.50	<0.50	<5.0	1.9	--
7/19/2002	P	a	451.37	32.00	42.00	30.27	421.10	60	2	<0.50	<0.50	<0.50	<0.50	3.5	7.9
1/15/2003	--	a	451.37	32.00	42.00	22.86	428.51	83	9.1	<0.50	3.4	4.6	1	2.5	7.2
7/9/2003	P		451.37	32.00	42.00	29.41	421.96	110	<0.50	<0.50	<0.50	<0.50	0.98	2.6	7.1
02/19/2004	--		451.37	32.00	42.00	43.25	408.12	--	--	--	--	--	--	--	--
08/04/2004	P		453.83	32.00	42.00	27.71	426.12	540	36	3.8	17	24	5.2	3.5	7.1
01/18/2005	--		453.83	32.00	42.00	24.56	429.27	--	--	--	--	--	--	--	--
07/15/2005	P		453.83	32.00	42.00	27.61	426.22	4,600	210	44	150	670	32	3.5	7.1
01/10/2006	--		453.83	32.00	42.00	23.75	430.08	--	--	--	--	--	--	--	--
7/21/2006	P		453.83	32.00	42.00	27.96	425.87	260	<0.50	<0.50	<0.50	0.86	5.1	2.60	7.2

Table 1. Summary of Ground-Water Monitoring Data: Relative Water Elevations and Laboratory Analyses
Station #771, 899 Rincon Ave., Livermore, CA

Well and Sample Date	P/NP	Comments	TOC (feet msl)	Top of Screen (ft bgs)	Bottom of Screen (ft bgs)	DTW (feet bgs)	Water Level Elevation (feet msl)	Concentrations in (µg/L)						DO (mg/L)	pH
								GRO/TPHg	Benzene	Toluene	Ethyl-Benzene	Total Xylenes	MTBE		
MW-6 Cont.															
1/17/2007	--		453.83	32.00	42.00	30.57	423.26	--	--	--	--	--	--	--	--
7/18/2007	P		453.83	32.00	42.00	30.96	422.87	<50	<0.50	<0.50	<0.50	<0.50	<0.50	4.95	7.57
1/15/2008	--		453.83	32.00	42.00	28.89	424.94	--	--	--	--	--	--	--	--
7/7/2008	NP		453.83	32.00	42.00	34.57	419.26	<50	<0.50	<0.50	<0.50	<0.50	<0.50	6.00	7.19
1/7/2009	--		453.83	32.00	42.00	34.75	419.08	--	--	--	--	--	--	--	--
MW-7															
3/20/1995	--		450.33	30.00	40.00	22.07	428.26	31,000	2,300	400	620	2,900	--	--	--
6/2/1995	--		450.33	30.00	40.00	23.42	426.91	40,000	1,400	280	610	2,400	--	--	--
8/23/1995	--		450.33	30.00	40.00	27.13	423.20	25,000	1,400	200	600	1,600	350	--	--
12/4/1995	--		450.33	30.00	40.00	29.45	420.88	23,000	1,100	74	490	720	--	--	--
2/20/1996	--		450.33	30.00	40.00	20.25	430.08	39,000	1,200	140	640	1,800	<400	--	--
5/15/1996	--		450.33	30.00	40.00	21.38	428.95	--	--	--	--	--	--	--	--
8/13/1996	--		450.33	30.00	40.00	25.52	424.81	--	--	--	--	--	--	--	--
11/13/1996	--		450.33	30.00	40.00	29.38	420.95	--	--	--	--	--	--	--	--
3/26/1997	--		450.33	30.00	40.00	24.36	425.97	35,000	1,100	180	460	1,700	<300	--	--
5/15/1997	--		450.33	30.00	40.00	26.90	423.43	--	--	--	--	--	--	--	--
8/26/1997	--		450.33	30.00	40.00	30.21	420.12	--	--	--	--	--	--	--	--
11/5/1997	--		450.33	30.00	40.00	32.49	417.84	--	--	--	--	--	--	--	--
2/18/1998	--		450.33	30.00	40.00	18.10	432.23	19,000	1,100	120	460	1,700	240	--	--
5/20/1998	--		450.33	30.00	40.00	21.68	428.65	--	--	--	--	--	--	--	--
7/30/1998	--		450.33	30.00	40.00	26.07	424.26	--	--	--	--	--	--	--	--
10/29/1998	--		450.33	30.00	40.00	31.13	419.20	--	--	--	--	--	--	--	--
3/16/1999	P		450.33	30.00	40.00	24.45	425.88	8,600	430	51	200	680	<120	1.5	--
5/5/1999	--		450.33	30.00	40.00	25.84	424.49	--	--	--	--	--	--	--	--
8/26/1999	--		450.33	30.00	40.00	28.28	422.05	--	--	--	--	--	--	1.51	--
12/3/1999	--		450.33	30.00	40.00	31.57	418.76	--	--	--	--	--	--	--	--
3/13/2000	--	d	450.33	30.00	40.00	--	--	--	--	--	--	--	--	--	--
6/20/2000	--		450.33	30.00	40.00	25.91	424.42	--	--	--	--	--	--	5.4	--
8/31/2000	--		450.33	30.00	40.00	28.40	421.93	8,410	344	58.9	276	581	202	0.09	--
2/9/2001	--		450.33	30.00	40.00	30.04	420.29	2,030	203	12	17.9	49.4	128	1.55	--

Table 1. Summary of Ground-Water Monitoring Data: Relative Water Elevations and Laboratory Analyses

Station #771, 899 Rincon Ave., Livermore, CA

Well and Sample Date	P/NP	Comments	TOC (feet msl)	Top of Screen (ft bgs)	Bottom of Screen (ft bgs)	DTW (feet bgs)	Water Level Elevation (feet msl)	Concentrations in (µg/L)					DO (mg/L)	pH	
								GRO/TPHg	Benzene	Toluene	Ethyl-Benzene	Total Xylenes			MTBE
MW-7 Cont.															
9/17/2001	P		450.33	30.00	40.00	29.03	421.30	4,800	200	14	9.9	27	160	0.29	--
1/21/2002	--	b	450.33	30.00	40.00	--	--	2,600	280	17	41	50	97	--	--
1/21/2002	P		450.33	30.00	40.00	28.98	421.35	4,200	350	20	52	63	99	0.81	--
7/19/2002	P	a	450.33	30.00	40.00	28.70	421.63	5,700	630	31	330	160	64	0.7	7.3
1/15/2003	--	a	450.33	30.00	40.00	21.91	428.42	12,000	470	19	340	310	91	1.5	7.0
7/9/2003	P		450.33	30.00	40.00	27.88	422.45	6,700	590	23	280	92	110	1.0	6.9
02/19/2004	P	c	450.33	30.00	40.00	25.12	425.21	8,900	670	24	470	120	100	0.8	6.6
08/04/2004	P		452.70	30.00	40.00	25.92	426.78	9,100	930	29	460	130	140	0.6	7.2
01/18/2005	P		452.70	30.00	40.00	22.31	430.39	16,000	770	33	590	220	87	1.0	6.9
07/15/2005	P		452.70	30.00	40.00	27.20	425.50	12,000	1,000	38	490	220	150	1.5	6.9
01/10/2006	P		452.70	30.00	40.00	20.61	432.09	13,000	1,200	50	760	330	120	0.8	7.1
7/21/2006	P		452.70	30.00	40.00	28.10	424.60	8,000	110	<50	380	180	54	3.20	7.8
1/17/2007	P		452.70	30.00	40.00	29.70	423.00	5,600	16	<2.5	26	12	3.1	1.08	7.83
7/18/2007	P		452.70	30.00	40.00	29.73	422.97	2,400	140	2.8	9.1	7.3	67	4.86	7.67
1/15/2008	P		452.70	30.00	40.00	26.18	426.52	3,500	120	3.6	9.0	29	26	3.16	7.07
7/7/2008	NP		452.70	30.00	40.00	33.10	419.60	70	0.76	<0.50	<0.50	<0.50	0.69	7.81	8.24
1/7/2009	NP		452.70	30.00	40.00	33.21	419.49	<50	1.5	<0.50	<0.50	<0.50	<0.50	3.00	7.73
MW-8															
3/20/1995	--		449.43	27.50	42.50	24.75	424.68	<50	<0.5	<0.5	<0.5	<0.5	--	--	--
6/2/1995	--		449.43	27.50	42.50	24.95	424.48	--	--	--	--	--	--	--	--
8/23/1995	--		449.43	27.50	42.50	30.94	418.49	<50	<0.5	<0.5	<0.5	<0.5	<3	--	--
12/4/1995	--		449.43	27.50	42.50	31.99	417.44	--	--	--	--	--	--	--	--
2/20/1996	--		449.43	27.50	42.50	21.13	428.30	<50	<0.5	<0.5	<0.5	<0.5	<3	--	--
5/15/1996	--		449.43	27.50	42.50	21.96	427.47	--	--	--	--	--	--	--	--
8/13/1996	--		449.43	27.50	42.50	30.20	419.23	<50	<0.5	<0.5	<0.5	<0.5	<3	--	--
11/13/1996	--		449.43	27.50	42.50	33.24	416.19	--	--	--	--	--	--	--	--
3/26/1997	--		449.43	27.50	42.50	26.85	422.58	<50	<0.5	<0.5	<0.5	<0.5	<3	--	--
5/15/1997	--		449.43	27.50	42.50	29.69	419.74	--	--	--	--	--	--	--	--
8/26/1997	--		449.43	27.50	42.50	34.00	415.43	<50	<0.5	<0.5	<0.5	<0.5	<3	--	--
11/5/1997	--		449.43	27.50	42.50	35.94	413.49	--	--	--	--	--	--	--	--

Table 1. Summary of Ground-Water Monitoring Data: Relative Water Elevations and Laboratory Analyses
Station #771, 899 Rincon Ave., Livermore, CA

Well and Sample Date	P/NP	Comments	TOC (feet msl)	Top of Screen (ft bgs)	Bottom of Screen (ft bgs)	DTW (feet bgs)	Water Level Elevation (feet msl)	Concentrations in (µg/L)						DO (mg/L)	pH
								GRO/TPHg	Benzene	Toluene	Ethyl-Benzene	Total Xylenes	MTBE		
MW-8 Cont.															
2/18/1998	--		449.43	27.50	42.50	18.18	431.25	<50	0.6	0.6	<0.5	1.1	<3	--	--
5/20/1998	--		449.43	27.50	42.50	22.85	426.58	--	--	--	--	--	--	--	--
7/30/1998	NP		449.43	27.50	42.50	30.31	419.12	<50	<0.5	<0.5	<0.5	<0.5	<3	8.21	--
10/29/1998	--		449.43	27.50	42.50	35.88	413.55	--	--	--	--	--	--	--	--
3/16/1999	NP		449.43	27.50	42.50	28.50	420.93	<50	<0.5	<0.5	<0.5	<0.5	<3	1.0	--
5/5/1999	--		449.43	27.50	42.50	29.76	419.67	--	--	--	--	--	--	--	--
8/26/1999	P		449.43	27.50	42.50	33.51	415.92	<50	<0.5	<0.5	<0.5	<0.5	<3	4.93	--
12/3/1999	--		449.43	27.50	42.50	35.83	413.60	--	--	--	--	--	--	--	--
3/13/2000	P		449.43	27.50	42.50	26.12	423.31	<50	<0.5	<0.5	<0.5	<1	<3	2.81	--
6/20/2000	--		449.43	27.50	42.50	30.91	418.52	--	--	--	--	--	--	5.8	--
8/31/2000	--		449.43	27.50	42.50	33.70	415.73	--	--	--	--	--	--	--	--
2/9/2001	--		449.43	27.50	42.50	30.90	418.53	--	--	--	--	--	--	--	--
9/17/2001	--		449.43	27.50	42.50	33.95	415.48	--	--	--	--	--	--	--	--
1/21/2002	--		449.43	27.50	42.50	33.71	415.72	--	--	--	--	--	--	--	--
7/19/2002	--		449.43	27.50	42.50	35.30	414.13	--	--	--	--	--	--	--	--
1/15/2003	--		449.43	27.50	42.50	27.10	422.33	--	--	--	--	--	--	--	--
7/9/2003	--		449.43	27.50	42.50	33.10	416.33	--	--	--	--	--	--	--	--
02/19/2004	--		449.43	27.50	42.50	28.92	420.51	--	--	--	--	--	--	--	--
08/04/2004	--		451.80	27.50	42.50	34.28	417.52	--	--	--	--	--	--	--	--
01/18/2005	--		451.80	27.50	42.50	26.76	425.04	--	--	--	--	--	--	--	--
07/15/2005	--		451.80	27.50	42.50	31.14	420.66	--	--	--	--	--	--	--	--
01/10/2006	--		451.80	27.50	42.50	22.88	428.92	--	--	--	--	--	--	--	--
7/21/2006	--		451.80	27.50	42.50	30.84	420.96	--	--	--	--	--	--	--	--
1/17/2007	--		451.80	27.50	42.50	33.20	418.60	--	--	--	--	--	--	--	--
7/18/2007	--		451.80	27.50	42.50	31.92	419.88	--	--	--	--	--	--	--	--
1/15/2008	--		451.80	27.50	42.50	31.52	420.28	--	--	--	--	--	--	--	--
7/7/2008	--		451.80	27.50	42.50	36.32	415.48	--	--	--	--	--	--	--	--
1/7/2009	--		451.80	27.50	42.50	40.52	411.28	--	--	--	--	--	--	--	--
MW-9															
3/20/1995	--		449.21	29.50	39.50	19.11	430.10	<50	<0.5	<0.5	<0.5	<0.5	--	--	--

Table 1. Summary of Ground-Water Monitoring Data: Relative Water Elevations and Laboratory Analyses

Station #771, 899 Rincon Ave., Livermore, CA

Well and Sample Date	P/NP	Comments	TOC (feet msl)	Top of Screen (ft bgs)	Bottom of Screen (ft bgs)	DTW (feet bgs)	Water Level Elevation (feet msl)	Concentrations in (µg/L)						DO (mg/L)	pH
								GRO/TPHg	Benzene	Toluene	Ethyl-Benzene	Total Xylenes	MTBE		
MW-9 Cont.															
6/2/1995	--		449.21	29.50	39.50	21.23	427.98	--	--	--	--	--	--	--	--
8/23/1995	--		449.21	29.50	39.50	24.33	424.88	<50	<0.5	<0.5	<0.5	<0.5	<3	--	--
12/4/1995	--		449.21	29.50	39.50	27.90	421.31	--	--	--	--	--	--	--	--
2/20/1996	--		449.21	29.50	39.50	17.86	431.35	<50	<0.5	<0.5	<0.5	<0.5	<3	--	--
5/15/1996	--		449.21	29.50	39.50	18.69	430.52	--	--	--	--	--	--	--	--
8/13/1996	--		449.21	29.50	39.50	24.17	425.04	--	--	--	--	--	--	--	--
11/13/1996	--		449.21	29.50	39.50	28.01	421.20	--	--	--	--	--	--	--	--
3/26/1997	--		449.21	29.50	39.50	22.58	426.63	<50	<0.5	<0.5	<0.5	<0.5	<3	--	--
5/15/1997	--		449.21	29.50	39.50	25.12	424.09	--	--	--	--	--	--	--	--
8/26/1997	--		449.21	29.50	39.50	28.28	420.93	--	--	--	--	--	--	--	--
11/5/1997	--		449.21	29.50	39.50	31.18	418.03	--	--	--	--	--	--	--	--
2/18/1998	--		449.21	29.50	39.50	16.03	433.18	<50	0.6	0.5	<0.5	1	<3	--	--
5/20/1998	--		449.21	29.50	39.50	19.31	429.90	--	--	--	--	--	--	--	--
7/30/1998	--		449.21	29.50	39.50	24.90	424.31	--	--	--	--	--	--	--	--
10/29/1998	--		449.21	29.50	39.50	30.08	419.13	--	--	--	--	--	--	--	--
3/16/1999	P		449.21	29.50	39.50	22.68	426.53	<50	<0.5	<0.5	<0.5	<0.5	<3	1.0	--
5/5/1999	--		449.21	29.50	39.50	23.82	425.39	--	--	--	--	--	--	--	--
8/26/1999	--		449.21	29.50	39.50	26.57	422.64	--	--	--	--	--	--	5.08	--
12/3/1999	--	d	449.21	29.50	39.50	--	--	--	--	--	--	--	--	--	--
3/13/2000	P		449.21	29.50	39.50	25.62	423.59	<50	<0.5	<0.5	<0.5	<1	<3	5.43	--
6/20/2000	--		449.21	29.50	39.50	23.55	425.66	--	--	--	--	--	--	6.2	--
8/31/2000	--		449.21	29.50	39.50	27.39	421.82	--	--	--	--	--	--	--	--
2/9/2001	--		449.21	29.50	39.50	28.65	420.56	--	--	--	--	--	--	--	--
9/17/2001	--		449.21	29.50	39.50	27.51	421.70	--	--	--	--	--	--	--	--
1/21/2002	--		449.21	29.50	39.50	27.09	422.12	--	--	--	--	--	--	--	--
7/19/2002	--		449.21	29.50	39.50	27.06	422.15	--	--	--	--	--	--	--	--
1/15/2003	--		449.21	29.50	39.50	21.78	427.43	--	--	--	--	--	--	--	--
7/9/2003	--		449.21	29.50	39.50	26.18	423.03	--	--	--	--	--	--	--	--
02/19/2004	--		449.21	29.50	39.50	23.45	425.76	--	--	--	--	--	--	--	--
08/04/2004	--		451.63	29.50	39.50	29.24	422.39	--	--	--	--	--	--	--	--
01/18/2005	--		451.63	29.50	39.50	20.64	430.99	--	--	--	--	--	--	--	--

Table 1. Summary of Ground-Water Monitoring Data: Relative Water Elevations and Laboratory Analyses
Station #771, 899 Rincon Ave., Livermore, CA

Well and Sample Date	P/NP	Comments	TOC (feet msl)	Top of Screen (ft bgs)	Bottom of Screen (ft bgs)	DTW (feet bgs)	Water Level Elevation (feet msl)	Concentrations in (µg/L)						DO (mg/L)	pH
								GRO/TPHg	Benzene	Toluene	Ethyl-Benzene	Total Xylenes	MTBE		
MW-9 Cont.															
07/15/2005	--		451.63	29.50	39.50	25.72	425.91	--	--	--	--	--	--	--	--
01/10/2006	--		451.63	29.50	39.50	18.86	432.77	--	--	--	--	--	--	--	--
7/21/2006	--		451.63	29.50	39.50	25.58	426.05	--	--	--	--	--	--	--	--
1/17/2007	--		451.63	29.50	39.50	29.11	422.52	--	--	--	--	--	--	--	--
7/18/2007	--	d	451.63	29.50	39.50	--	--	--	--	--	--	--	--	--	--
1/15/2008	--		451.63	29.50	39.50	24.89	426.74	--	--	--	--	--	--	--	--
7/7/2008	--		451.63	29.50	39.50	32.06	419.57	--	--	--	--	--	--	--	--
1/7/2009	--		451.63	29.50	39.50	32.65	418.98	--	--	--	--	--	--	--	--
MW-10															
3/20/1995	--		449.22	29.00	37.00	20.96	428.26	--	--	--	--	--	--	--	--
6/2/1995	--		449.22	29.00	37.00	22.15	427.07	--	--	--	--	--	--	--	--
8/23/1995	--		449.22	29.00	37.00	24.47	424.75	<50	<0.5	<0.5	<0.5	<0.5	<3	--	--
12/4/1995	--		449.22	29.00	37.00	26.97	422.25	--	--	--	--	--	--	--	--
2/20/1996	--		449.22	29.00	37.00	18.40	430.82	<50	<0.5	<0.5	<0.5	<0.5	<3	--	--
5/15/1996	--	d	449.22	29.00	37.00	--	--	--	--	--	--	--	--	--	--
8/13/1996	--		449.22	29.00	37.00	23.70	425.52	--	--	--	--	--	--	--	--
11/13/1996	--		449.22	29.00	37.00	27.15	422.07	--	--	--	--	--	--	--	--
3/26/1997	--		449.22	29.00	37.00	22.23	426.99	<50	<0.5	<0.5	<0.5	<0.5	<3	--	--
5/15/1997	--		449.22	29.00	37.00	24.57	424.65	--	--	--	--	--	--	--	--
8/26/1997	--		449.22	29.00	37.00	27.62	421.60	--	--	--	--	--	--	--	--
11/5/1997	--		449.22	29.00	37.00	30.79	418.43	--	--	--	--	--	--	--	--
2/18/1998	--	d	449.22	29.00	37.00	--	--	--	--	--	--	--	--	--	--
5/20/1998	--		449.22	29.00	37.00	--	--	--	--	--	--	--	--	--	--
7/30/1998	--		449.22	29.00	37.00	23.90	425.32	--	--	--	--	--	--	--	--
10/29/1998	--		449.22	29.00	37.00	30.55	418.67	--	--	--	--	--	--	--	--
3/16/1999	P		449.22	29.00	37.00	23.05	426.17	<50	<0.5	<0.5	<0.5	<0.5	<3	1.0	--
5/5/1999	--		449.22	29.00	37.00	24.00	425.22	--	--	--	--	--	--	--	--
8/26/1999	--		449.22	29.00	37.00	26.50	422.72	--	--	--	--	--	--	5.15	--
12/3/1999	--		449.22	29.00	37.00	30.80	418.42	--	--	--	--	--	--	--	--
3/13/2000	--	d	449.22	29.00	37.00	26.21	423.01	--	--	--	--	--	--	--	--

Table 1. Summary of Ground-Water Monitoring Data: Relative Water Elevations and Laboratory Analyses
Station #771, 899 Rincon Ave., Livermore, CA

Well and Sample Date	P/NP	Comments	TOC (feet msl)	Top of Screen (ft bgs)	Bottom of Screen (ft bgs)	DTW (feet bgs)	Water Level Elevation (feet msl)	Concentrations in (µg/L)						DO (mg/L)	pH
								GRO/TPHg	Benzene	Toluene	Ethyl-Benzene	Total Xylenes	MTBE		
MW-10 Cont.															
6/20/2000	--		449.22	29.00	37.00	23.52	425.70	--	--	--	--	--	--	5.5	--
8/31/2000	--		449.22	29.00	37.00	27.52	421.70	--	--	--	--	--	--	--	--
2/9/2001	--		449.22	29.00	37.00	28.71	420.51	--	--	--	--	--	--	--	--
9/17/2001	--		449.22	29.00	37.00	27.94	421.28	--	--	--	--	--	--	--	--
1/21/2002	--		449.22	29.00	37.00	27.44	421.78	--	--	--	--	--	--	--	--
7/19/2002	--		449.22	29.00	37.00	27.80	421.42	--	--	--	--	--	--	--	--
1/15/2003	--		449.22	29.00	37.00	23.09	426.13	--	--	--	--	--	--	--	--
7/9/2003	--		449.22	29.00	37.00	26.87	422.35	--	--	--	--	--	--	--	--
02/19/2004	--		449.22	29.00	37.00	23.39	425.83	--	--	--	--	--	--	--	--
01/18/2005	--		451.65	29.00	37.00	21.40	430.25	--	--	--	--	--	--	--	--
07/15/2005	--		451.65	29.00	37.00	25.37	426.28	--	--	--	--	--	--	--	--
01/10/2006	--		451.65	29.00	37.00	19.81	431.84	--	--	--	--	--	--	--	--
7/21/2006	--		451.65	29.00	37.00	25.16	426.49	--	--	--	--	--	--	--	--
1/17/2007	--		451.65	29.00	37.00	28.95	422.70	--	--	--	--	--	--	--	--
7/18/2007	--	d	451.65	29.00	37.00	--	--	--	--	--	--	--	--	--	--
1/15/2008	--		451.65	29.00	37.00	24.62	427.03	--	--	--	--	--	--	--	--
7/7/2008	--	d	451.65	29.00	37.00	--	--	--	--	--	--	--	--	--	--
1/7/2009	--	d	451.63	29.00	37.00	--	--	--	--	--	--	--	--	--	--
MW-11															
3/20/1995	--		448.02	29.00	39.00	25.02	423.00	<50	<0.5	<0.5	<0.5	<0.5	--	--	--
6/2/1995	--		448.02	29.00	39.00	23.82	424.20	--	--	--	--	--	--	--	--
8/23/1995	--		448.02	29.00	39.00	30.15	417.87	<50	<0.5	<0.5	<0.5	<0.5	<3	--	--
12/4/1995	--		448.02	29.00	39.00	31.63	416.39	--	--	--	--	--	--	--	--
2/20/1996	--		448.02	29.00	39.00	20.94	427.08	<50	<0.5	<0.5	<0.5	<0.5	<3	--	--
5/15/1996	--		448.02	29.00	39.00	23.03	424.99	--	--	--	--	--	--	--	--
8/13/1996	--		448.02	29.00	39.00	29.19	418.83	<50	<0.5	<0.5	<0.5	<0.5	<3	--	--
11/13/1996	--		448.02	29.00	39.00	31.96	416.06	--	--	--	--	--	--	--	--
3/26/1997	--		448.02	29.00	39.00	26.61	421.41	<50	<0.5	<0.5	<0.5	<0.5	<3	--	--
5/15/1997	--		448.02	29.00	39.00	29.39	418.63	--	--	--	--	--	--	--	--
8/26/1997	--		448.02	29.00	39.00	33.47	414.55	<50	<0.5	<0.5	<0.5	<0.5	<3	--	--

**Table 1. Summary of Ground-Water Monitoring Data: Relative Water Elevations and Laboratory Analyses
Station #771, 899 Rincon Ave., Livermore, CA**

Well and Sample Date	P/NP	Comments	TOC (feet msl)	Top of Screen (ft bgs)	Bottom of Screen (ft bgs)	DTW (feet bgs)	Water Level Elevation (feet msl)	Concentrations in (µg/L)						DO (mg/L)	pH
								GRO/TPHg	Benzene	Toluene	Ethyl-Benzene	Total Xylenes	MTBE		
MW-11 Cont.															
11/5/1997	--		448.02	29.00	39.00	35.12	412.90	--	--	--	--	--	--	--	--
2/18/1998	--		448.02	29.00	39.00	18.03	429.99	<50	<0.5	<0.5	<0.5	1	<3	--	--
5/20/1998	--		448.02	29.00	39.00	23.00	425.02	--	--	--	--	--	--	--	--
7/30/1998	P		448.02	29.00	39.00	29.30	418.72	<50	<0.5	<0.5	<0.5	<0.5	<3	5.59	--
10/29/1998	--		448.02	29.00	39.00	34.47	413.55	--	--	--	--	--	--	--	--
3/16/1999	P		448.02	29.00	39.00	27.88	420.14	<50	<0.5	<0.5	<0.5	<0.5	<3	1.0	--
5/5/1999	--		448.02	29.00	39.00	26.85	421.17	--	--	--	--	--	--	--	--
8/26/1999	P		448.02	29.00	39.00	32.74	415.28	<50	<0.5	<0.5	<0.5	<0.5	<3	4.59	--
12/3/1999	--		448.02	29.00	39.00	34.70	413.32	--	--	--	--	--	--	--	--
3/13/2000	P		448.02	29.00	39.00	25.94	422.08	<50	<0.5	<0.5	<0.5	<1	<3	3.21	--
6/20/2000	--		448.02	29.00	39.00	30.40	417.62	--	--	--	--	--	--	3.3	--
8/31/2000	NP		448.02	29.00	39.00	32.68	415.34	<50.0	<0.500	<0.500	<0.500	<0.500	<2.50	0.4	--
8/31/2000	--	b	448.02	29.00	39.00	--	--	<50.0	<0.500	<0.500	<0.500	<0.500	<2.50	--	--
2/9/2001	--		448.02	29.00	39.00	31.17	416.85	--	--	--	--	--	--	--	--
9/17/2001	NP		448.02	29.00	39.00	32.98	415.04	<50	<0.50	<0.50	<0.50	<0.50	<2.5	0.62	--
1/21/2002	--		448.02	29.00	39.00	31.05	416.97	--	--	--	--	--	--	--	--
7/19/2002	P		448.02	29.00	39.00	31.67	416.35	<50	<0.50	<0.50	<0.50	<0.50	<0.50	3.7	7.7
1/15/2003	--		448.02	29.00	39.00	23.75	424.27	--	--	--	--	--	--	--	--
7/9/2003	P		448.02	29.00	39.00	31.06	416.96	<50	<0.50	<0.50	<0.50	<0.50	<0.50	2.4	6.6
02/19/2004	--		448.02	29.00	39.00	27.21	420.81	--	--	--	--	--	--	--	--
08/04/2004	P		450.41	29.00	39.00	31.71	418.70	<50	<0.50	<0.50	<0.50	<0.50	<0.50	3.3	7.1
01/18/2005	--		450.41	29.00	39.00	24.80	425.61	--	--	--	--	--	--	--	--
07/15/2005	P		450.41	29.00	39.00	29.15	421.26	<50	<0.50	<0.50	<0.50	<0.50	<0.50	2.7	7.1
01/10/2006	--		450.41	29.00	39.00	20.87	429.54	--	--	--	--	--	--	--	--
7/21/2006	P		450.41	29.00	39.00	29.30	421.11	<50	<0.50	<0.50	<0.50	<0.50	<0.50	2.7	7.2
1/17/2007	--		450.41	29.00	39.00	31.59	418.82	--	--	--	--	--	--	--	--
7/18/2007	NP		450.41	29.00	39.00	29.22	421.19	<50	<0.50	<0.50	<0.50	<0.50	<0.50	5.35	7.12
1/15/2008	--		450.41	29.00	39.00	29.12	421.29	--	--	--	--	--	--	--	--
7/7/2008	NP		450.41	29.00	39.00	34.21	416.20	<50	<0.50	<0.50	<0.50	<0.50	<0.50	4.08	7.94
1/7/2009	--		450.41	29.00	39.00	37.45	412.96	--	--	--	--	--	--	--	--

Table 1. Summary of Ground-Water Monitoring Data: Relative Water Elevations and Laboratory Analyses

Station #771, 899 Rincon Ave., Livermore, CA

Well and Sample Date	P/NP	Comments	TOC (feet msl)	Top of Screen (ft bgs)	Bottom of Screen (ft bgs)	DTW (feet bgs)	Water Level Elevation (feet msl)	Concentrations in (µg/L)						DO (mg/L)	pH
								GRO/TPHg	Benzene	Toluene	Ethyl-Benzene	Total Xylenes	MTBE		
RW-1															
3/20/1995	--		451.67	25.50	40.50	23.76	427.91	15,000	1,000	140	310	950	--	--	--
6/2/1995	--		451.67	25.50	40.50	25.12	426.55	12,000	1,300	280	420	1,100	--	--	--
8/23/1995	--		451.67	25.50	40.50	28.80	422.87	8,200	520	190	240	610	<50	--	--
12/4/1995	--		451.67	25.50	40.50	31.15	420.52	2,600	140	59	83	210	--	--	--
2/20/1996	--		451.67	25.50	40.50	21.45	430.22	6,300	410	160	180	650	<40	--	--
5/15/1996	--		451.67	25.50	40.50	22.97	428.70	--	--	--	--	--	--	--	--
8/13/1996	--		451.67	25.50	40.50	24.74	426.93	--	--	--	--	--	--	--	--
11/13/1996	--		451.67	25.50	40.50	30.69	420.98	--	--	--	--	--	--	--	--
3/26/1997	--		451.67	25.50	40.50	25.69	425.98	500	57	3	6.4	18	54	--	--
5/15/1997	--		451.67	25.50	40.50	28.19	423.48	--	--	--	--	--	--	--	--
8/26/1997	--		451.67	25.50	40.50	31.21	420.46	--	--	--	--	--	--	--	--
11/5/1997	--		451.67	25.50	40.50	33.67	418.00	--	--	--	--	--	--	--	--
2/18/1998	--		451.67	25.50	40.50	20.14	431.53	9,400	200	70	190	710	<60	--	--
5/20/1998	--		451.67	25.50	40.50	23.43	428.24	--	--	--	--	--	--	--	--
7/30/1998	--		451.67	25.50	40.50	27.42	424.25	--	--	--	--	--	--	--	--
10/29/1998	--		451.67	25.50	40.50	32.47	419.20	--	--	--	--	--	--	--	--
3/16/1999	NP		451.67	25.50	40.50	25.45	426.22	1,100	140	19	45	83	530	1.0	--
5/5/1999	--		451.67	25.50	40.50	27.23	424.44	--	--	--	--	--	--	--	--
8/26/1999	--		451.67	25.50	40.50	29.98	421.69	--	--	--	--	--	--	1.39	--
12/3/1999	--		451.67	25.50	40.50	32.38	419.29	--	--	--	--	--	--	--	--
3/13/2000	NP		451.67	25.50	40.50	25.53	426.14	1,100	130	3.5	0.7	95	230	4.43	--
6/20/2000	--		451.67	25.50	40.50	28.31	423.36	--	--	--	--	--	--	1.9	--
8/31/2000	NP		451.67	25.50	40.50	30.61	421.06	<50.0	<0.500	<0.500	<0.500	<0.500	82.5	3.21	--
2/9/2001	NP		451.67	25.50	40.50	31.14	420.53	<50.0	<0.500	<0.500	<0.500	<0.500	<2.50	0.84	--
9/17/2001	NP		451.67	25.50	40.50	31.70	419.97	<50	<0.50	<0.50	<0.50	<0.50	<2.5	1.51	--
1/21/2002	NP		451.67	25.50	40.50	30.15	421.52	<50	7.7	<0.50	<0.50	1.5	18	0.63	--
7/19/2002	NP		451.67	25.50	40.50	31.15	420.52	<50	<0.50	<0.50	<0.50	<0.50	13	1.4	6.6
1/15/2003	--	a	451.67	25.50	40.50	22.20	429.47	860	9	1.6	17	42	1.5	2.8	7.2
7/9/2003	--		451.67	25.50	40.50	29.56	422.11	<50	<0.50	<0.50	<0.50	<0.50	<0.50	1.8	7.1
02/19/2004	NP	c	451.67	25.50	40.50	23.53	428.14	<50	<0.50	<0.50	<0.50	<0.50	<0.50	2.4	6.7
08/04/2004	P		454.11	25.50	40.50	22.45	431.66	600	<0.50	<0.50	3.3	3.4	<0.50	4.4	7.2

Table 1. Summary of Ground-Water Monitoring Data: Relative Water Elevations and Laboratory Analyses
Station #771, 899 Rincon Ave., Livermore, CA

Well and Sample Date	P/NP	Comments	TOC (feet msl)	Top of Screen (ft bgs)	Bottom of Screen (ft bgs)	DTW (feet bgs)	Water Level Elevation (feet msl)	Concentrations in (µg/L)						DO (mg/L)	pH
								GRO/TPHg	Benzene	Toluene	Ethyl-Benzene	Total Xylenes	MTBE		
RW-1 Cont.															
01/18/2005	P		454.11	25.50	40.50	23.57	430.54	1,400	8.0	1.9	22	68	<0.50	3.6	6.9
07/15/2005	NP		454.11	25.50	40.50	29.02	425.09	<50	<0.50	<0.50	<0.50	<0.50	2.0	1.1	7.8
01/10/2006	P		454.11	25.50	40.50	21.88	432.23	480	4.3	0.67	8.3	18	0.54	4.4	7.1
7/21/2006	--	d	454.11	25.50	40.50	--	--	--	--	--	--	--	--	--	--
1/17/2007	P		454.11	25.50	40.50	31.48	422.63	6,900	17	2.8	22	31	2.6	4.08	7.74
7/18/2007	NP		454.11	25.50	40.50	32.45	421.66	<50	<0.50	<0.50	<0.50	<0.50	<0.50	1.33	7.48
1/15/2008	NP		454.11	25.50	40.50	28.39	425.72	<50	<0.50	<0.50	<0.50	<0.50	8.3	2.73	6.87
7/7/2008	NP		454.11	25.50	40.50	35.19	418.92	<50	<0.50	<0.50	<0.50	<0.50	0.53	2.51	7.05
1/7/2009	NP		454.11	25.50	40.50	33.31	420.80	120	0.96	<0.50	<0.50	<0.50	1.6	2.13	6.84
VW-1															
8/31/2000	P		--	18.50	28.50	20.61	--	<50.0	<0.500	<0.500	<0.500	<0.500	<2.50	10.08	--
2/9/2001	P		--	18.50	28.50	22.10	--	<50.0	<0.500	<0.500	<0.500	<0.500	<2.50	0.53	--
9/17/2001	P		--	18.50	28.50	21.99	--	<50	<0.50	<0.50	<0.50	<0.50	<2.5	6.59	--
1/21/2002	P		--	18.50	28.50	21.50	--	<50	<0.50	<0.50	<0.50	<0.50	<5.0	0.7	--
7/19/2002	P		--	18.50	28.50	22.42	--	<50	<0.50	<0.50	<0.50	<0.50	<0.50	4.9	7.1
1/15/2003	--		--	18.50	28.50	22.59	--	<50	<0.50	<0.50	0.63	1.7	<0.50	5.4	7.2
7/9/2003	--		--	18.50	28.50	22.50	--	<50	<0.50	<0.50	<0.50	0.61	<0.50	2.0	7.0
02/19/2004	--		--	18.50	28.50	21.04	--	--	--	--	--	--	--	--	--
08/04/2004	P		453.29	18.50	28.50	20.48	432.81	<50	<0.50	<0.50	<0.50	<0.50	<0.50	5.7	7.0
01/18/2005	--		453.29	18.50	28.50	21.72	431.57	--	--	--	--	--	--	--	--
07/15/2005	P		453.29	18.50	28.50	22.50	430.79	<50	<0.50	<0.50	<0.50	<0.50	<0.50	5.1	7.4
01/10/2006	--		453.29	18.50	28.50	20.17	433.12	--	--	--	--	--	--	--	--
7/21/2006	P	e	453.29	18.50	28.50	22.50	430.79	220	<0.50	<0.50	<0.50	<0.50	<0.50	5.91	7.3
1/17/2007	--		453.29	18.50	28.50	21.67	431.62	--	--	--	--	--	--	--	--
7/18/2007	NP		453.29	18.50	28.50	23.58	429.71	<50	<0.50	<0.50	<0.50	<0.50	<0.50	6.45	8.52
1/15/2008	--		453.29	18.50	28.50	21.87	431.42	--	--	--	--	--	--	--	--
7/7/2008	NP		453.29	18.50	28.50	23.70	429.59	<50	<0.50	<0.50	<0.50	<0.50	<0.50	7.54	8.46
1/7/2009	--		453.29	18.50	28.50	22.00	431.29	--	--	--	--	--	--	--	--

SYMBOLS AND ABBREVIATIONS:

--/- - = Not analyzed/applicable/sampled/measured
< = Not detected at or above specified laboratory reporting limit
DO = Dissolved oxygen
DTW = Depth to water in ft bgs
ft bgs = Feet below ground surface
ft MSL = Feet above mean sea level
GRO = Gasoline range organics, range C4-C12
GWE = Groundwater elevation in ft MSL
g/L = Micrograms per liter
mg/L = Milligrams per liter
MTBE = Methyl tert-butyl ether
NP = Not purged before sampling
P = Purged before sampling
TPH-g = Total petroleum hydrocarbons as gasoline
TOC = Top of casing elevation in ft MSL

FOOTNOTES:

a = Chromatogram Pattern: Gasoline C6-C10
b = Duplicate sample
c = GRO analyzed by EPA Method 8015B modified
d = Well inaccessible
e = Hydrocarbon result partly due to individ. peak(s) in quant. range.
f = Sample > 4x spike concentration.

NOTES:

For previous historical GWE and analytical data please refer to Fourth Quarter 1995 Groundwater Monitoring Program Results and Remediation System Performance Evaluation Report, ARCO Service Station 771, Livermore, California, (EMCON, March 1, 1996).

Please note that beginning in the fourth quarter 2003, the laboratory modified the reported analyte list. TPH-g was changed to GRO. The resulting data may be impacted by the potential inclusion of non-TPH-g analytes within the requested fuel range resulting in a higher concentration being reported.

All analytes unless otherwise notes utilized EPA Method 8260B, EPA method 8015B modified prior to 1/15/03, and EPA method 8020 prior to 12/03/99.

Site wells were resurveyed to NAVD '88 datum on March 8, 2004.

Top of screen and bottom of screen depths for MW-3 and MW-6 are estimated from cross-sections.

GRO analysis was completed by EPA method 8260B (C4-C12) for samples collected from the time period April 2006 through February 4, 2008. The analysis for GRO was changed to EPA method 8015B (C6-C12) for samples collected from the time period February 5, 2008 through the present.

Note: The data within this table collected prior to April 2006 was provided to Broadbent & Associates, Inc. by Atlantic Richfield Company and their previous consultants. Broadbent & Associates, Inc. has not verified the accuracy of this information.

**Table 2. Summary of Fuel Additives Analytical Data
Station #771, 899 Rincon Ave., Livermore, CA**

Well and Sample Date	Concentrations in (µg/L)								Comments
	Ethanol	TBA	MTBE	DIPE	ETBE	TAME	1,2-DCA	EDB	
MW-1									
MW-2									
7/9/2003	<1,000	<200	39	<5.0	<5.0	<5.0	<5.0	<5.0	
08/04/2004	<2,000	<400	78	<10	<10	<10	<10	<10	
07/15/2005	<500	120	46	<2.5	<2.5	<2.5	<2.5	<2.5	
7/21/2006	<300	<20	<0.50	<0.50	<0.50	<0.50	<0.50	<0.50	
7/18/2007	<600	89	45	<1.0	<1.0	<1.0	<1.0	<1.0	
7/7/2008	--	<100	19	<5.0	<5.0	<5.0	<5.0	--	
MW-3									
MW-4									
7/9/2003	<1,000	750	150	<5.0	<5.0	<5.0	<5.0	<5.0	
02/19/2004	<1,000	630	180	<10	<10	<10	<5.0	<5.0	
08/04/2004	<2,000	1,300	300	<10	<10	<10	<10	<10	
01/18/2005	<1,000	630	160	<5.0	<5.0	<5.0	<5.0	<5.0	a
07/15/2005	<1,000	850	230	<5.0	<5.0	<5.0	<5.0	<5.0	
01/10/2006	<1,500	810	190	<2.5	<2.5	<2.5	<2.5	<2.5	
7/21/2006	<300	35	3.1	<0.50	<0.50	<0.50	<0.50	<0.50	
1/17/2007	<300	<20	11	<0.50	<0.50	<0.50	<0.50	<0.50	
7/18/2007	<300	830	74	<0.50	<0.50	<0.50	0.76	<0.50	
1/15/2008	<300	280	61	<0.50	<0.50	<0.50	<0.50	<0.50	b (MTBE)
7/7/2008	--	19	17	<0.50	<0.50	<0.50	<0.50	--	
1/7/2009	--	74	37	<0.50	<0.50	<0.50	<0.50	<0.50	
MW-5									
7/9/2003	<1,000	1,100	260	<5.0	<5.0	<5.0	<5.0	<5.0	
08/04/2004	<1,000	850	250	<5.0	<5.0	<5.0	<5.0	<5.0	
07/15/2005	<1,000	720	270	<5.0	<5.0	<5.0	<5.0	<5.0	
7/21/2006	<3,000	<200	14	<5.0	<5.0	<5.0	<5.0	<5.0	
7/18/2007	<300	260	110	<0.50	<0.50	<0.50	<0.50	<0.50	
7/7/2008	--	<10	<0.50	<0.50	<0.50	<0.50	<0.50	--	
MW-6									

**Table 2. Summary of Fuel Additives Analytical Data
Station #771, 899 Rincon Ave., Livermore, CA**

Well and Sample Date	Concentrations in (µg/L)								Comments
	Ethanol	TBA	MTBE	DIPE	ETBE	TAME	1,2-DCA	EDB	
MW-6 Cont.									
7/9/2003	<100	<20	0.98	<0.50	<0.50	<0.50	<0.50	<0.50	
08/04/2004	<100	<20	5.2	<0.50	<0.50	<0.50	<0.50	<0.50	
07/15/2005	<500	110	32	<2.5	<2.5	<2.5	<2.5	<2.5	
7/21/2006	<300	<20	5.1	<0.50	<0.50	<0.50	<0.50	<0.50	
7/18/2007	<300	<20	<0.50	<0.50	<0.50	<0.50	<0.50	<0.50	
7/7/2008	--	<10	<0.50	<0.50	<0.50	<0.50	<0.50	--	
MW-7									
7/9/2003	<1,000	350	110	<5.0	<5.0	<5.0	<5.0	<5.0	
02/19/2004	<1,000	420	100	<10	<10	<10	<5.0	<5.0	
08/04/2004	<5,000	<1,000	140	<25	<25	<25	<25	<25	
01/18/2005	<1,000	260	87	<5.0	<5.0	<5.0	<5.0	<5.0	a
07/15/2005	<5,000	<1,000	150	<25	<25	<25	<25	<25	
01/10/2006	<30,000	<2,000	120	<50	<50	<50	<50	<50	
7/21/2006	<30,000	<2,000	54	<50	<50	<50	<50	<50	
1/17/2007	<1,500	<100	3.1	<2.5	<2.5	<2.5	<2.5	<2.5	
7/18/2007	<600	220	67	<1.0	<1.0	<1.0	<1.0	<1.0	
1/15/2008	<1,500	<100	26	<2.5	<2.5	<2.5	<2.5	<2.5	
7/7/2008	--	<10	0.69	<0.50	<0.50	<0.50	<0.50	--	
1/7/2009	--	<10	<0.50	<0.50	<0.50	<0.50	<0.50	<0.50	
MW-8									
MW-9									
MW-10									
MW-11									
7/9/2003	<100	<20	<0.50	<0.50	<0.50	<0.50	<0.50	<0.50	
08/04/2004	<100	<20	<0.50	<0.50	<0.50	<0.50	<0.50	<0.50	
07/15/2005	<100	<20	<0.50	<0.50	<0.50	<0.50	<0.50	<0.50	
7/21/2006	<300	<20	<0.50	<0.50	<0.50	<0.50	<0.50	<0.50	
7/18/2007	<300	<20	<0.50	<0.50	<0.50	<0.50	<0.50	<0.50	
7/7/2008	--	<10	<0.50	<0.50	<0.50	<0.50	<0.50	--	

**Table 2. Summary of Fuel Additives Analytical Data
Station #771, 899 Rincon Ave., Livermore, CA**

Well and Sample Date	Concentrations in (µg/L)								Comments
	Ethanol	TBA	MTBE	DIPE	ETBE	TAME	1,2-DCA	EDB	
RW-1									
7/9/2003	<100	<20	<0.50	<0.50	<0.50	<0.50	<0.50	<0.50	
02/19/2004	<100	<20	<0.50	<1.0	<1.0	<1.0	<0.50	<0.50	
08/04/2004	<100	<20	<0.50	<0.50	<0.50	<0.50	<0.50	<0.50	
01/18/2005	<100	<20	<0.50	<0.50	<0.50	<0.50	<0.50	<0.50	a
07/15/2005	<100	<20	2.0	<0.50	<0.50	<0.50	<0.50	<0.50	
01/10/2006	<300	<20	0.54	<0.50	<0.50	<0.50	<0.50	<0.50	
1/17/2007	<1,500	<100	2.6	<2.5	<2.5	<2.5	<2.5	<2.5	
7/18/2007	<300	<20	<0.50	<0.50	<0.50	<0.50	<0.50	<0.50	
1/15/2008	<300	<20	8.3	<0.50	<0.50	<0.50	<0.50	<0.50	
7/7/2008	--	<10	0.53	<0.50	<0.50	<0.50	<0.50	--	
1/7/2009	--	<10	1.6	<0.50	<0.50	<0.50	<0.50	<0.50	
VW-1									
7/9/2003	<100	<20	<0.50	<0.50	<0.50	<0.50	<0.50	<0.50	
08/04/2004	<100	<20	<0.50	<0.50	<0.50	<0.50	<0.50	<0.50	
07/15/2005	<100	<20	<0.50	<0.50	<0.50	<0.50	<0.50	<0.50	
7/21/2006	<300	<20	<0.50	<0.50	<0.50	<0.50	<0.50	<0.50	
7/18/2007	<300	<20	<0.50	<0.50	<0.50	<0.50	<0.50	<0.50	
7/7/2008	--	<10	<0.50	<0.50	<0.50	<0.50	<0.50	--	

SYMBOLS AND ABBREVIATIONS:

-- = Not analyzed/sampled

< = Not detected at or above specified laboratory reporting limit

1,2-DCA = 1,2-Dichloroethane

DIPE = Di-isopropyl ether

EDB = 1,2-Dibromoethane

ETBE = Ethyl tert-butyl ether

MTBE = Methyl tert-butyl ether

µg/L = Micrograms per liter

TAME = tert-Amyl methyl ether

TBA = tert-Butyl alcohol

FOOTNOTES:

a = Calibration verification was within the method limits but outside the contract limits for ethanol.

b = Sample >4x spike concentration.

Note: The data within this table collected prior to April 2006 was provided to Broadbent & Associates, Inc. by Atlantic Richfield Company and their previous consultants. Broadbent & Associates, Inc. has not verified the accuracy of this information.

**Table 3. Historical Ground-Water Flow Direction and Gradient
Station #771, 899 Rincon Ave., Livermore, CA**

Date Sampled	Approximate Flow Direction	Approximate Hydraulic Gradient
3/20/1995	Northwest	0.030
6/2/1995	North-Northwest	0.014
8/23/1995	North-Northwest	0.030
12/4/1995	North-Northwest	0.030
2/20/1996	Northwest	0.016
5/15/1996	Northwest	0.024
8/13/1996	North-Northwest	0.030
11/13/1996	North-Northwest	0.031
3/26/1997	North-Northwest	0.044
5/15/1997	North-Northwest	0.031
8/26/1997	North-Northwest	0.042
11/5/1997	North-Northwest	0.030
2/18/1998	Northwest	0.010
5/20/1998	Northwest	0.030
7/30/1998	North	0.040
10/29/1998	North	0.005
3/16/1999	North-Northwest	0.030
5/5/1999	North	0.040
8/26/1999	North-Northwest	0.050
12/3/1999	North-Northeast	0.060
3/13/2000	North-Northwest	0.066
6/20/2000	North-Northwest	0.050
8/31/2000	North-Northwest	0.062
2/9/2001	North-Northeast	0.014
9/17/2001	North-Northwest	0.061
1/21/2002	North-Northwest	0.050
7/19/2002	North-Northwest	0.044
1/15/2003	Northeast to Southeast	0.038 - 0.016
7/9/2003	Northwest to North-Northwest	0.009 - 0.063
2/19/2004	North	0.044
8/4/2004	Northeast	0.071
1/18/2005	North-Northeast	0.04
7/15/2005	Northeast and Southwest	0.05 and 0.02
1/10/2006	North	0.02
7/21/2006	North and Southwest	0.05 and 0.02
1/17/2007	North-Northeast and Southwest	0.03 and 0.02
7/18/2007	North-Northeast to Southwest	0.03 and 0.04
1/15/2008	North	0.04
7/7/2008	North	0.03
1/7/2009	North	0.06

Note: The data within this table collected prior to April 2006 was provided to Broadbent & Associates, Inc. by Atlantic Richfield Company and their previous consultants. Broadbent & Associates, Inc. has not verified the accuracy of this information.

APPENDIX A

STRATUS ENVIRONMENTAL, INC. GROUND-WATER SAMPLING DATA PACKAGE
(INCLUDES, FIELD DATA SHEETS, NON-HAZARDOUS WASTE DATA FORM,
CERTIFIED LABORATORY ANALYTICAL RESULTS AND CHAIN OF CUSTODY
DOCUMENTATION, AND FIELD PROCEDURES FOR GROUNDWATER SAMPLING)



3330 Cameron Park Drive, Ste 550
Cameron Park, California 95682
(530) 676-6004 ~ Fax: (530) 676-6005

January 12, 2009

Mr. Rob Miller
Broadbent & Associates
2000 Kirman Ave.
Reno, NV 89502

Re: Groundwater Sampling Data Package, BP Service Station No. 771, located at
899 Rincon Avenue, Livermore, California

General Information

Data Submittal Prepared / Reviewed by: Carol Huff / Jay Johnson

Phone Number: (530) 676-6000

On-Site Supplier Representatives: Chris Grant

Sampling Date: January 7, 2009

Arrival: 15:30 *Departure:* 17:30

Weather Conditions: Clear

Unusual Field Conditions: None

Scope of Work Performed: Quarterly monitoring and sampling.

Variations from Work Scope: A car was parked over Well MW-10 and therefore could not be gauged during this event.

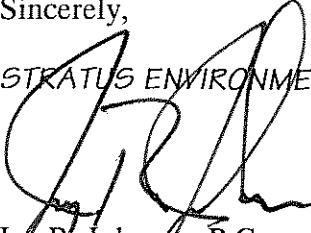
This submittal presents the data collected in association with routine groundwater monitoring. The attachments include field data sheets, chain of custody documentation, certified analytical results, and field procedures for groundwater sampling documentation. The information is being provided to BP-ARCO's Scoping Supplier for use in preparing a report for regulatory submittal. This submittal is limited to presentation of collected data and does not include data interpretation or conclusions or recommendations.

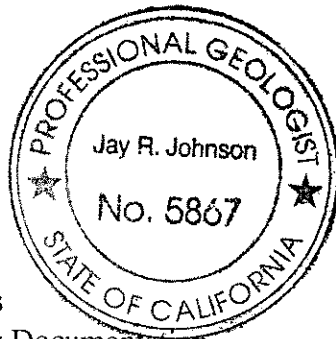
January 28, 2009

Any questions concerning this submittal should be addressed to the Preparer/Reviewer identified above.

Sincerely,

STRATUS ENVIRONMENTAL, INC.


Jay R. Johnson, P.G.
Project Manager



Attachments:

- Field Data Sheets
- Chain of Custody Documentation
- Certified Analytical Results
- Field Procedures for Groundwater Sampling

cc: Mr. Paul Supple, BP/ARCO



Site Address 899 Rincon Ave.
 City Livermore, Ca
 Sampled by: C. Grant
 Signature [Signature]

Site Number Arco 771
 Project Number E-771
 Project PM Jay Johnson
 DATE 01/07/09

Water Level Data					Purge Volume Calculations					Purge Method				Sample Record			Field Data
Well ID	Time	Depth to Product (feet)	Depth to Water (feet)	Total Depth (feet)	Water column (feet)	Diameter (inches)	Multiplier	3 casing volumes (gallons)	Actual water purged (gallons)	No Purge	Bailer	Pump	other	DTW at sample time (feet)	Sample I.D	Sample Time	DO (mg/L)
Mw-1	1557		34.07	36.81	—	4	2	—	—	X				—	—	—	—
Mw-2	1714		31.67	34.25	—	4	2	—	—	X				—	—	—	—
Mw-3	1624		34.09	39.70	—	4	2	—	—	X				—	—	—	—
Mw-4	1658		32.59	41.30	—	4	2	—	—	X				—	—	—	—
Mw-5	1714		33.14	40.25	—	4	2	—	—	X	X			32.59	Mw-4	1705	2.79
Mw-6	1546		34.75	43.30	—	4	2	—	—	X				—	—	—	—
Mw-7	1637		33.21	39.75	—	4	2	—	—	X				—	—	—	—
Mw-8	1620		40.52	41.60	—	2	.5	—	—	X	X			33.21	Mw-7	1648	3.00
Mw-9	1726		32.65	39.14	—	2	.5	—	—	X				—	—	—	—
Mw-10	- covered by vehicle -				—	2	.5	—	—	X				—	—	—	—
Mw-11	1615		37.45	38.71	—	2	.5	—	—	X				—	—	—	—
Rw-1	1554		33.31	39.78	—	6	4.4	—	—	X				—	—	—	—
VW-1	1630		22.00	28.25	—	4	2	—	—	X	X			33.31	Rw-1	1607	2.13

Multiplier
 2" = 0.5 3" = 1.0 4" = 2.0 6" = 4.4

Please refer to groundwater sampling field procedures
 pH/Conductivity/temperature Meter - Oakton Model PC-10
 DO Meter - Oakton 300 Series (DO is always measured before purge)

CALIBRATION DATE
 pH 01/02/09
 Conductivity
 DO



Site Address 899 Pincon Ave.
 City Livermore, Ca
 Site Sampled by CG

Site Number Arco 771
 Project No. E-771
 Project PM Jay Johnson
 Date Sampled 01/07/09

ORIGINAL

Well ID <u>Mw-4</u> <u>1705</u>					Well ID <u>Mw-7</u> <u>1648</u>				
purge start time <u>Bailer (np)</u> <u>no odor</u>					purge start time <u>Bailer (np)</u> <u>no odor</u>				
	Temp C	pH	cond	gallons		Temp C	pH	cond	gallons
time	<u>17.5</u>	<u>7.26</u>	<u>1208</u>	<u>15</u>	time	<u>16.5</u>	<u>7.73</u>	<u>786</u>	<u>15</u>
time					time				
time					time				
time					time				
purge stop time <u>sample only</u>					purge stop time <u>sample only</u>				
Well ID <u>Rw-1</u> <u>1607</u>					Well ID				
purge start time <u>Bailer (np)</u> <u>no odor</u>					purge start time				
	Temp C	pH	cond	gallons		Temp C	pH	cond	gallons
time	<u>18.2</u>	<u>6.84</u>	<u>865</u>	<u>15</u>	time				
time					time				
time					time				
time					time				
purge stop time <u>sample only</u>					purge stop time				
Well ID					Well ID				
purge start time					purge start time				
	Temp C	pH	cond	gallons		Temp C	pH	cond	gallons
time					time				
time					time				
time					time				
time					time				
purge stop time					purge stop time				
Well ID					Well ID				
purge start time					purge start time				
	Temp C	pH	cond	gallons		Temp C	pH	cond	gallons
time					time				
time					time				
time					time				
time					time				
purge stop time					purge stop time				

WELLHEAD OBSERVATION FORM



Site Name/Number: ARCO 771

Date: 01/07/09 Technician: C. Grant

Well I.D.	Box in Good Condition? <small>X = Yes Blank = No</small>	Lock Missing? <small>X = Yes (replaced) Blank = No</small>	Water in Wellbox? <small>X = Yes Blank = No</small>	Water Level Relative to Cap? <small>A = Above cap B = Below cap L = Level w/cap</small>	Well Cap? <small>I = Intact M = Missing or Compromised (replaced)</small>	Bolts Missing? <small>X = Yes Blank = No</small>	Bolts Stripped? <small>X = Yes Blank = No</small>	Bolt Holes Stripped? <small>X = Yes Blank = No</small>	Cracked or Broken Lid? <small>X = Yes Blank = No</small>	Cracked or Broken Box? <small>X = Yes Blank = No</small>	Grout Level more than 1ft below TOC? <small>X = Yes Blank = No</small>	Additional Comments <small>(such as missing lid, concrete needs replacement, or other - explain)</small>
Mw-1	X											
Mw-2	X											
Mw-3								X - (2)				
Mw-4	X											
Mw-5	X											
Mw-6	X											
Mw-7	X											
Mw-8	X											
Mw-9	X											
Mw-10	- covered by vehicle -											
Mw-11								X - (2)	X			
Rw-1	X											
Vw-1	X											

DRUM INVENTORY

Drums on site? Yes No (circle)
 Type and # Steel: _____ Plastic: _____

Note whether drums are full or empty, solids or liquids:

Drum label info (description, date, contact info):

(updated 3-28-08, SS)

GENERAL SITE CONDITIONS

Make notes on housekeeping conditions (such as trash around remediation system enclosure/compound, bent or missing bollards, signs missing from compound fences, graffiti on compound, etc.)



A BP affiliated company

Chain of Custody Record

Project Name: ARCO 771
 BP BU/AR Region/Enfos Segment: BP > Americas > West > Retail > Alameda > 771
 State or Lead Regulatory Agency: _____
 Requested Due Date (mm/dd/yy): STD/TAT

On-site Time: <u>1530</u>	Temp: <u>60°</u>
Off-site Time: <u>1730</u>	Temp: <u>56°</u>
Sky Conditions: <u>Clear</u>	
Meteorological Events: _____	
Wind Speed: _____	Direction: _____

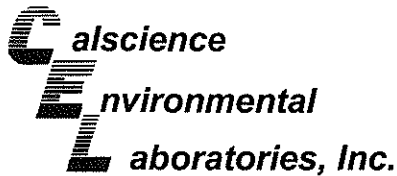
Lab Name: Cal Science	BP/AR Facility No.: 771	Consultant/Contractor: Stratus Environmental, Inc.
Address: 7440 Lincoln Way	BP/AR Facility Address: 899 Rincon Ave., Livermore	Address: 3330 Cameron Park Drive, Suite 550
Garden Grove Ca. 92841-1427	Site Lat/Long:	Cameron Park, CA 95682
Lab PM: Linda Sharpberg	California Global ID No.: T0600100113	Consultant/Contractor Project No.:
Tele/Fax: 408-782-8156 408-782-6308 (fax)	Enfos Project No.: <u>LAB to CALL or email</u>	Consultant/Contractor PM: Jay Johnson
BP/AR PM Contact: Paul Supple	Provision or OOG (circle one) Provision	Tele/Fax: (530) 676-6000 / (530) 676-6005
Address: 2010 Crow Canyon Place, Suite 150	Phase/WBS: 04-Monitoring	Report Type & QC Level: Level 1 with EDF
San Ramon, CA	Sub Phase/Task: 03-Analytical	E-mail EDD To: <u>bcarroll@stratusinc.net</u>
Tele/Fax: 925-275-3506	Cost Element: 01-Contractor labor	Invoice to: Atlantic Richfield Co.

Item No.	Sample Description	Time	Date 2009 2007	Matrix			Laboratory No.	No. of Containers	Preservative					Requested Analysis					Sample Point Lat/Long and Comments *Oxy = MTBE, TAME, ETBE, DIPE, TBA			
				Soil/Solid	Water/Liquid	Air			Unpreserved	H ₂ SO ₄	HNO ₃	HCl	Methanol	GR0 by 8015M	BTEX	Soxy's	EDB	1,2 DCA		Ethanol		
1	MW-4	1705	01/07	X				6			X				X	X	X	X	X	X		* by B260 B
2	MW-7	1648	01/07	X				6			X				X	X	X	X	X	X		
3	EW-1	1607	01/07	X				6			X				X	X	X	X	X	X		
4																						
5	TR-0771-01070009	1530	01/07	X				2														"on hold"
6																						
7																						
8																						
9																						
10																						HOLD - u

Sampler's Name: <u>C. Grant</u>	Relinquished By / Affiliation: <u>[Signature] / Stratus</u>	Date: <u>01/09</u>	Time: _____	Accepted By / Affiliation: _____	Date: _____	Time: _____
Sampler's Company: <u>Stratus Environmental Inc.</u>						
Shipment Date: <u>01/09/09</u>						
Shipment Method: <u>GSD</u>						
Shipment Tracking No: _____						

Special Instructions: Please cc results to rmiller@broadbentinc.com

Custody Seals In Place: Yes / No | Temp Blank: Yes / No | Cooler Temp on Receipt: _____ °F/C | Trip Blank: Yes / No | MS/MSD Sample Submitted: Yes / No



Stratus Environmental, Inc.
3330 Cameron Park Drive, Suite 550
Cameron Park, CA 95682-8861

January 22, 2009

Jay Johnson
Stratus Environmental, inc.
3330 Cameron Park Drive, Suite 550
Cameron Park, CA 95682-8861

Subject: **Calscience Work Order No.:** 09-01-0884
Client Reference: Arco 771

Dear Client:

Enclosed is an analytical report for the above-referenced project. The samples included in this report were received 1/13/2009 and analyzed in accordance with the attached chain-of-custody.

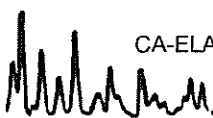
Unless otherwise noted, all analytical testing was accomplished in accordance with the guidelines established in our Quality Systems Manual, applicable standard operating procedures, and other related documentation. The original report of subcontracted analysis, if any, is provided herein, and follows the standard Calscience data package. The results in this analytical report are limited to the samples tested and any reproduction thereof must be made in its entirety.

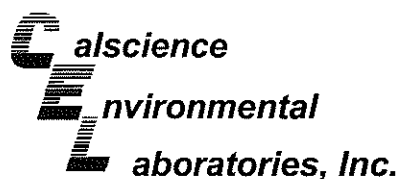
If you have any questions regarding this report, please do not hesitate to contact the undersigned.

Sincerely,

A handwritten signature in black ink, appearing to read "Richard Villafania".

Calscience Environmental
Laboratories, Inc.
Richard Villafania
Project Manager





Analytical Report



Stratus Environmental, inc.
3330 Cameron Park Drive, Suite 550
Cameron Park, CA 95682-8861

Date Received: 01/13/09
Work Order No: 09-01-0884
Preparation: EPA 5030B
Method: EPA 8015B (M)

Project: Arco 771

Page 1 of 1

Client Sample Number	Lab Sample Number	Date/Time Collected	Matrix	Instrument	Date Prepared	Date/Time Analyzed	QC Batch ID
MW-4	09-01-0884-1-D	01/07/09 17:05	Aqueous	GC 30	01/16/09	01/17/09 05:57	090116B01

Parameter	Result	RL	DF	Qual	Units
Gasoline Range Organics (C6-C12)	110	50	1		ug/L
<u>Surrogates:</u>	<u>REC (%)</u>	<u>Control Limits</u>		<u>Qual</u>	
1,4-Bromofluorobenzene	97	38-134			

MW-7	09-01-0884-2-D	01/07/09 16:48	Aqueous	GC 30	01/16/09	01/17/09 06:30	090116B01
------	----------------	-------------------	---------	-------	----------	-------------------	-----------

Parameter	Result	RL	DF	Qual	Units
Gasoline Range Organics (C6-C12)	ND	50	1		ug/L
<u>Surrogates:</u>	<u>REC (%)</u>	<u>Control Limits</u>		<u>Qual</u>	
1,4-Bromofluorobenzene	94	38-134			

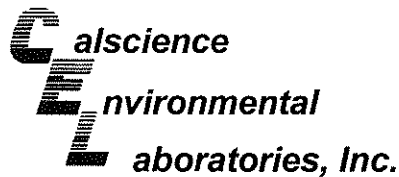
RW-1	09-01-0884-3-D	01/07/09 16:07	Aqueous	GC 30	01/16/09	01/17/09 07:04	090116B01
------	----------------	-------------------	---------	-------	----------	-------------------	-----------

Parameter	Result	RL	DF	Qual	Units
Gasoline Range Organics (C6-C12)	120	50	1		ug/L
<u>Surrogates:</u>	<u>REC (%)</u>	<u>Control Limits</u>		<u>Qual</u>	
1,4-Bromofluorobenzene	98	38-134			

Method Blank	099-12-695-398	N/A	Aqueous	GC 30	01/16/09	01/16/09 18:48	090116B01
--------------	----------------	-----	---------	-------	----------	-------------------	-----------

Parameter	Result	RL	DF	Qual	Units
Gasoline Range Organics (C6-C12)	ND	50	1		ug/L
<u>Surrogates:</u>	<u>REC (%)</u>	<u>Control Limits</u>		<u>Qual</u>	
1,4-Bromofluorobenzene	96	38-134			

RL - Reporting Limit , DF - Dilution Factor , Qual - Qualifiers



Analytical Report

Stratus Environmental, inc.
3330 Cameron Park Drive, Suite 550
Cameron Park, CA 95682-8861

Date Received: 01/13/09
Work Order No: 09-01-0884
Preparation: EPA 5030B
Method: EPA 8260B
Units: ug/L

Project: Arco 771

Page 1 of 2

Client Sample Number	Lab Sample Number	Date/Time Collected	Matrix	Instrument	Date Prepared	Date/Time Analyzed	QC Batch ID
MW-4	09-01-0884-1-A	01/07/09 17:05	Aqueous	GC/MS BB	01/15/09	01/15/09 22:35	090115L01

Parameter	Result	RL	DF	Qual	Parameter	Result	RL	DF	Qual
Benzene	1.1	0.50	1		Methyl-t-Butyl Ether (MTBE)	37	0.50	1	
1,2-Dibromoethane	ND	0.50	1		Tert-Butyl Alcohol (TBA)	74	10	1	
1,2-Dichloroethane	ND	0.50	1		Diisopropyl Ether (DIPE)	ND	0.50	1	
Ethylbenzene	ND	0.50	1		Ethyl-t-Butyl Ether (ETBE)	ND	0.50	1	
Toluene	ND	0.50	1		Tert-Amyl-Methyl Ether (TAME)	ND	0.50	1	
Xylenes (total)	ND	0.50	1						
<u>Surrogates:</u>	<u>REC (%)</u>	<u>Control Limits</u>		<u>Qual</u>	<u>Surrogates:</u>	<u>REC (%)</u>	<u>Control Limits</u>		<u>Qual</u>
1,2-Dichloroethane-d4	101	73-157			Dibromofluoromethane	107	82-142		
Toluene-d8	93	82-112			1,4-Bromofluorobenzene	98	75-105		

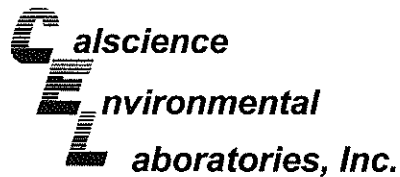
Client Sample Number	Lab Sample Number	Date/Time Collected	Matrix	Instrument	Date Prepared	Date/Time Analyzed	QC Batch ID
MW-7	09-01-0884-2-A	01/07/09 16:48	Aqueous	GC/MS BB	01/15/09	01/15/09 23:05	090115L01

Parameter	Result	RL	DF	Qual	Parameter	Result	RL	DF	Qual
Benzene	1.5	0.50	1		Methyl-t-Butyl Ether (MTBE)	ND	0.50	1	
1,2-Dibromoethane	ND	0.50	1		Tert-Butyl Alcohol (TBA)	ND	10	1	
1,2-Dichloroethane	ND	0.50	1		Diisopropyl Ether (DIPE)	ND	0.50	1	
Ethylbenzene	ND	0.50	1		Ethyl-t-Butyl Ether (ETBE)	ND	0.50	1	
Toluene	ND	0.50	1		Tert-Amyl-Methyl Ether (TAME)	ND	0.50	1	
Xylenes (total)	ND	0.50	1						
<u>Surrogates:</u>	<u>REC (%)</u>	<u>Control Limits</u>		<u>Qual</u>	<u>Surrogates:</u>	<u>REC (%)</u>	<u>Control Limits</u>		<u>Qual</u>
1,2-Dichloroethane-d4	102	73-157			Dibromofluoromethane	105	82-142		
Toluene-d8	96	82-112			1,4-Bromofluorobenzene	96	75-105		

Client Sample Number	Lab Sample Number	Date/Time Collected	Matrix	Instrument	Date Prepared	Date/Time Analyzed	QC Batch ID
RW-1	09-01-0884-3-A	01/07/09 16:07	Aqueous	GC/MS BB	01/15/09	01/15/09 23:35	090115L01

Parameter	Result	RL	DF	Qual	Parameter	Result	RL	DF	Qual
Benzene	0.96	0.50	1		Methyl-t-Butyl Ether (MTBE)	1.6	0.50	1	
1,2-Dibromoethane	ND	0.50	1		Tert-Butyl Alcohol (TBA)	ND	10	1	
1,2-Dichloroethane	ND	0.50	1		Diisopropyl Ether (DIPE)	ND	0.50	1	
Ethylbenzene	ND	0.50	1		Ethyl-t-Butyl Ether (ETBE)	ND	0.50	1	
Toluene	ND	0.50	1		Tert-Amyl-Methyl Ether (TAME)	ND	0.50	1	
Xylenes (total)	ND	0.50	1						
<u>Surrogates:</u>	<u>REC (%)</u>	<u>Control Limits</u>		<u>Qual</u>	<u>Surrogates:</u>	<u>REC (%)</u>	<u>Control Limits</u>		<u>Qual</u>
1,2-Dichloroethane-d4	99	73-157			Dibromofluoromethane	105	82-142		
Toluene-d8	94	82-112			1,4-Bromofluorobenzene	93	75-105		

RL - Reporting Limit , DF - Dilution Factor , Qual - Qualifiers



Analytical Report



Stratus Environmental, inc.
3330 Cameron Park Drive, Suite 550
Cameron Park, CA 95682-8861

Date Received: 01/13/09
Work Order No: 09-01-0884
Preparation: EPA 5030B
Method: EPA 8260B
Units: ug/L

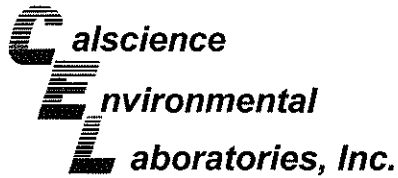
Project: Arco 771

Page 2 of 2

Client Sample Number	Lab Sample Number	Date/Time Collected	Matrix	Instrument	Date Prepared	Date/Time Analyzed	QC Batch ID
Method Blank	099-12-703-653	N/A	Aqueous	GC/MS BB	01/15/09	01/15/09 15:34	090115L01

Parameter	Result	RL	DF	Qual	Parameter	Result	RL	DF	Qual
Benzene	ND	0.50	1		Methyl-t-Butyl Ether (MTBE)	ND	0.50	1	
1,2-Dibromoethane	ND	0.50	1		Tert-Butyl Alcohol (TBA)	ND	10	1	
1,2-Dichloroethane	ND	0.50	1		Diisopropyl Ether (DIPE)	ND	0.50	1	
Ethylbenzene	ND	0.50	1		Ethyl-t-Butyl Ether (ETBE)	ND	0.50	1	
Toluene	ND	0.50	1		Tert-Amyl-Methyl Ether (TAME)	ND	0.50	1	
Xylenes (total)	ND	0.50	1						
<u>Surrogates:</u>	<u>REC (%)</u>	<u>Control Limits</u>		<u>Qual</u>	<u>Surrogates:</u>	<u>REC (%)</u>	<u>Control Limits</u>		<u>Qual</u>
1,2-Dichloroethane-d4	106	73-157			Dibromofluoromethane	107	82-142		
Toluene-d8	97	82-112			1,4-Bromofluorobenzene	94	75-105		

RL - Reporting Limit , DF - Dilution Factor , Qual - Qualifiers



Quality Control - Spike/Spike Duplicate

09-01-0884
01/16/09
090116S01

Stratus Environmental, inc.
3330 Cameron Park Drive, Suite 550
Cameron Park, CA 95682-8861

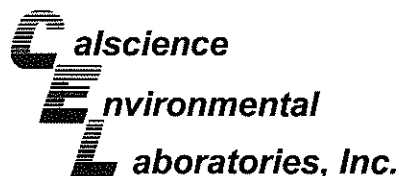
Date Received: 01/13/09
Work Order No: 09-01-0884
Preparation: EPA 5030B
Method: EPA 8015B (M)

Project Arco 771

Quality Control Sample ID	Matrix	Instrument	Date Prepared	Date Analyzed	MS/MSD Batch Number
09-01-0883-8	Aqueous	GC 30	01/16/09	01/16/09	090116S01

Parameter	MS %REC	MSD %REC	%REC CL	RPD	RPD CL	Qualifiers
Gasoline Range Organics (C6-C12)	92	95	38-134	4	0-25	

RPD - Relative Percent Difference . CL - Control Limit



Quality Control - Spike/Spike Duplicate

09-01-0619-1
 01/15/09
 090115S01

Stratus Environmental, inc.
 3330 Cameron Park Drive, Suite 550
 Cameron Park, CA 95682-8861

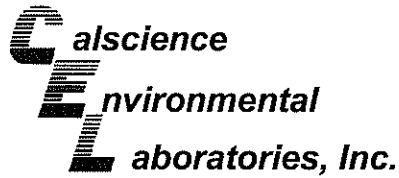
Date Received: 01/13/09
 Work Order No: 09-01-0884
 Preparation: EPA 5030B
 Method: EPA 8260B

Project Arco 771

Quality Control Sample ID	Matrix	Instrument	Date Prepared	Date Analyzed	MS/MSD Batch Number
09-01-0619-1	Aqueous	GC/MS BB	01/15/09	01/15/09	090115S01

Parameter	MS %REC	MSD %REC	%REC CL	RPD	RPD CL	Qualifiers
Benzene	108	106	86-122	2	0-8	
Carbon Tetrachloride	100	98	78-138	2	0-9	
Chlorobenzene	111	109	90-120	2	0-9	
1,2-Dibromoethane	95	88	70-130	7	0-30	
1,2-Dichlorobenzene	102	104	89-119	2	0-10	
1,1-Dichloroethene	117	117	52-142	0	0-23	
Ethylbenzene	83	89	70-130	7	0-30	
Toluene	106	100	85-127	6	0-12	
Trichloroethene	104	100	78-126	4	0-10	
Vinyl Chloride	88	86	56-140	2	0-21	
Methyl-t-Butyl Ether (MTBE)	96	94	64-136	2	0-28	
Tert-Butyl Alcohol (TBA)	120	120	27-183	0	0-60	
Diisopropyl Ether (DIPE)	96	97	78-126	1	0-16	
Ethyl-t-Butyl Ether (ETBE)	87	87	67-133	0	0-21	
Tert-Amyl-Methyl Ether (TAME)	81	82	63-141	0	0-21	
Ethanol	115	120	11-167	4	0-64	

RPD - Relative Percent Difference, CL - Control Limit



Quality Control - LCS/LCS Duplicate



Stratus Environmental, inc.
 3330 Cameron Park Drive, Suite 550
 Cameron Park, CA 95682-8861

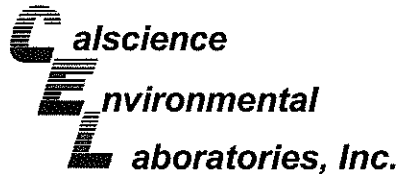
Date Received: N/A
 Work Order No: 09-01-0884
 Preparation: EPA 5030B
 Method: EPA 8015B (M)

Project: Arco 771

Quality Control Sample ID	Matrix	Instrument	Date Prepared	Date Analyzed	LCS/LCSD Batch Number
099-12-695-398	Aqueous	GC 30	01/16/09	01/16/09	090116B01

Parameter	LCS %REC	LCSD %REC	%REC CL	RPD	RPD CL	Qualifiers
Gasoline Range Organics (C6-C12)	99	89	78-120	11	0-20	

RPD - Relative Percent Difference , CL - Control Limit



Quality Control - LCS/LCS Duplicate



Stratus Environmental, inc.
3330 Cameron Park Drive, Suite 550
Cameron Park, CA 95682-8861

Date Received: N/A
Work Order No: 09-01-0884
Preparation: EPA 5030B
Method: EPA 8260B

Project: Arco 771

Quality Control Sample ID	Matrix	Instrument	Date Prepared	Date Analyzed	LCS/LCSD Batch Number		
099-12-703-653	Aqueous	GC/MS BB	01/15/09	01/15/09	090115L01		
Parameter	LCS %REC	LCSD %REC	%REC CL	ME CL	RPD	RPD CL	Qualifiers
Benzene	107	105	87-117	82-122	1	0-7	
Carbon Tetrachloride	102	101	78-132	69-141	1	0-8	
Chlorobenzene	111	109	88-118	83-123	2	0-8	
1,2-Dibromoethane	82	90	80-120	73-127	9	0-20	
1,2-Dichlorobenzene	103	103	88-118	83-123	1	0-8	
1,1-Dichloroethene	120	122	71-131	61-141	2	0-14	
Ethylbenzene	89	86	80-120	73-127	3	0-20	
Toluene	101	99	85-127	78-134	2	0-7	
Trichloroethene	103	102	85-121	79-127	1	0-11	
Vinyl Chloride	95	91	64-136	52-148	4	0-10	
Methyl-t-Butyl Ether (MTBE)	92	97	67-133	56-144	4	0-16	
Tert-Butyl Alcohol (TBA)	113	116	34-154	14-174	3	0-19	
Diisopropyl Ether (DIPE)	99	98	80-122	73-129	2	0-8	
Ethyl-t-Butyl Ether (ETBE)	88	88	73-127	64-136	0	0-11	
Tert-Amyl-Methyl Ether (TAME)	78	80	69-135	58-146	2	0-12	
Ethanol	119	124	34-124	19-139	4	0-44	

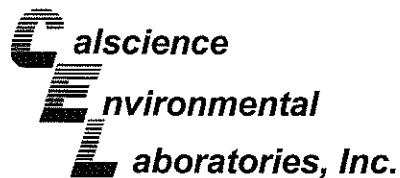
Total number of LCS compounds : 16

Total number of ME compounds : 0

Total number of ME compounds allowed : 1

LCS ME CL validation result : Pass

RPD - Relative Percent Difference, CL - Control Limit



Glossary of Terms and Qualifiers



Work Order Number: 09-01-0884

<u>Qualifier</u>	<u>Definition</u>
AX	Sample too dilute to quantify surrogate.
BA	There was no MS/MSD analyzed with this batch due to insufficient sample volume (NR = not reported). See Blank Spike/Blank Spike Duplicate.
BA,AY	Relative percent difference out of control, matrix interference suspected.
BB	Sample > 4x spike concentration.
BF	Reporting limits raised due to high hydrocarbon background.
BH	Reporting limits raised due to high level of non-target analytes.
BU	Sample analyzed after holding time expired.
BV	Sample received after holding time expired.
BY	Sample received at improper temperature.
CL	Initial analysis within holding time but required dilution.
CQ	Analyte concentration greater than 10 times the blank concentration.
CU	Surrogate concentration diluted to not detectable during analysis.
DF	Reporting limits elevated due to matrix interferences.
ET	Sample was extracted past end of recommended max. holding time.
EY	Result exceeds normal dynamic range; reported as a min est.
GS	Internal standard recovery is outside method recovery limit.
IB	CCV recovery above limit; analyte not detected.
IH	Calibrtn. verif. recov. below method CL for this analyte.
IJ	Calibrtn. verif. recov. above method CL for this analyte.
J,DX	J=EPA Flag -Estimated value; DX= Value < lowest standard (MQL), but > than MDL.
LA	Confirmatory analysis was past holding time.
LG	Surrogate recovery below the acceptance limit.
LH	Surrogate recovery above the acceptance limit.
LM,AY	MS and/or MSD above acceptance limits. See Blank Spike (LCS). Matrix interference suspected.
LN,AY	MS and/or MSD below acceptance limits. See Blank Spike (LCS). Matrix interference suspected.
LQ	LCS recovery above method control limits.
LR	LCS recovery below method control limits.

Work Order Number: 09-01-0884

<u>Qualifier</u>	<u>Definition</u>
MB	Analyte present in the method blank.
MG	Analyte is a suspected lab contaminate.
PC	Sample taken from VOA vial with air bubble > 6mm diameter.
PI	Primary and confirm results varied by > than 40% RPD.
RB	RPD exceeded method control limit; % recoveries within limits.





A BP affiliated company

Chain of Custody Record

Project Name: ARCO 771
 BP BU/AR Region/Enfos Segment: BP > Americas > West > Retail > Alameda > 771
 State or Lead Regulatory Agency: _____
 Requested Due Date (mm/dd/yy): STD/TAT

0884

On-site Time: <u>1520</u>	Temp: <u>60°</u>
Off-site Time: <u>1738</u>	Temp: <u>56°</u>
Sky Conditions: <u>Clear</u>	
Meteorological Events: _____	
Wind Speed: _____	Direction: _____

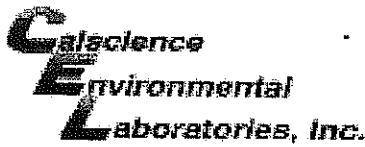
Lab Name: <u>Cal Science</u>	BP/AR Facility No.: <u>771</u>	Consultant/Contractor: <u>Stratus Environmental, Inc.</u>
Address: <u>7440 Lincoln Way</u>	BP/AR Facility Address: <u>899 Rincon Ave., Livermore</u>	Address: <u>3330 Cameron Park Drive, Suite 550</u>
<u>Garden Grove Ca. 92841-1427</u>	Site Lat/Long: _____	<u>Cameron Park, CA 95682</u>
Lab PM: <u>Linda Sharpenberg</u>	California Global ID No.: <u>T0600100113</u>	Consultant/Contractor Project No.: _____
Tele/Fax: <u>408-782-8156 408-782-6308 (fax)</u>	Enfos Project No.: <u>LAB to CALL or email</u>	Consultant/Contractor PM: <u>Jay Johnson</u>
BP/AR PM Contact: <u>Paul Supple</u>	Provision or OOC (circle one) <u>Provision</u>	Tele/Fax: <u>(530) 676-6000 / (530) 676-6005</u>
Address: <u>2010 Crow Canyon Place, Suite 150</u>	Phase/WBS: <u>04-Monitoring</u>	Report Type & QC Level: <u>Level I with EDF</u>
<u>San Ramon, CA</u>	Sub Phase/Task: <u>03-Analytical</u>	E-mail EDD To: <u>bcarroll@stratusinc.net</u>
Tele/Fax: <u>925-275-3506</u>	Cost Element: <u>01-Contractor labor</u>	Invoice to: <u>Atlantic Richfield Co.</u>

Item No.	Sample Description	Time	Date 2009 2008	Matrix			Laboratory No.	No. of Containers	Preservative					Requested Analysis					Sample Point Lat/Long and Comments *Oxy = MTBE, TAME, ETBE, DIPE, TBA	
				Soil/Solid	Water/Liquid	Air			Unpreserved	H ₂ SO ₄	HNO ₃	HCl	Methanol	GR by BDIEM	PTX	Sulph	EDS	12PCA		Ethanol
1	MW-4	1705	01/07	X			6			X				X	X	X	X	X	X	* by B260 B
2	MW-7	1648	01/07	X			4			X				X	X	X	X	X	X	
3	RW-1	1607	01/07	X			6			X				X	X	X	X	X	X	
4																				
8	TS-0771-01070609	1530	01/07	X			2													"on hold"
6																				
7																				
8																				
9																				
10																				HOLD u

Sampler's Name: <u>C. Grant</u>	Relinquished By / Affiliation: <u>[Signature] / Stratus</u>	Date: <u>01/09</u>	Time: <u>1300</u>	Accepted By / Affiliation: _____	Date: _____	Time: _____
Sampler's Company: <u>Stratus Environmental Inc.</u>						
Shipment Date: <u>01/09/09</u>						
Shipment Method: <u>G50</u>						
Shipment Tracking No: <u>106192921</u>				<u>[Signature]</u>	<u>01/30/09</u>	<u>0930</u>

Special Instructions: Please cc results to rmiller@broadbentinc.com

Custody Seals In Place: <u>(Yes)</u> No	Temp Blank: <u>(Yes)</u> No	Cooler Temp on Receipt: _____ °F/C	Trip Blank: <u>(Yes)</u> No	MS/MSD Sample Submitted: Yes / No
-----------------------------------------	-----------------------------	------------------------------------	-----------------------------	-----------------------------------



WORK ORDER #: 09-01-0884

SAMPLE RECEIPT FORM

Cooler 1 of 1

CLIENT: Stratus

DATE: 01/13/09

TEMPERATURE: (Criteria: 0.0°C – 6.0°C, not frozen)

Temperature 2.1 °C - 0.2°C (CF) = 1.9 °C Blank Sample

Sample(s) outside temperature criteria (PM/APM contacted by: _____).

Sample(s) outside temperature criteria but received on ice/chilled on same day of sampling.

Received at ambient temperature, placed on ice for transport by Courier.

Ambient Temperature: Air Filter Metals Only PCBs Only Initial: NE

CUSTODY SEALS INTACT:

Cooler _____ No (Not Intact) Not Present N/A Initial: NE

Sample _____ No (Not Intact) Not Present Initial: PS

SAMPLE CONDITION:

	Yes	No	N/A
Chain-Of-Custody (COC) document(s) received with samples.....	<input checked="" type="checkbox"/>	<input type="checkbox"/>	<input type="checkbox"/>
COC document(s) received complete.....	<input checked="" type="checkbox"/>	<input type="checkbox"/>	<input type="checkbox"/>
Sampler's name indicated on COC.....	<input checked="" type="checkbox"/>	<input type="checkbox"/>	<input type="checkbox"/>
Sample container label(s) consistent with COC.....	<input checked="" type="checkbox"/>	<input type="checkbox"/>	<input type="checkbox"/>
Sample container(s) intact and good condition.....	<input checked="" type="checkbox"/>	<input type="checkbox"/>	<input type="checkbox"/>
Correct containers and volume for analyses requested.....	<input checked="" type="checkbox"/>	<input type="checkbox"/>	<input type="checkbox"/>
Analyses received within holding time.....	<input checked="" type="checkbox"/>	<input type="checkbox"/>	<input type="checkbox"/>
Proper preservation noted on COC or sample container.....	<input checked="" type="checkbox"/>	<input type="checkbox"/>	<input type="checkbox"/>
Volatile analysis container(s) free of headspace.....	<input checked="" type="checkbox"/>	<input type="checkbox"/>	<input type="checkbox"/>
Tedlar bag(s) free of condensation.....	<input type="checkbox"/>	<input type="checkbox"/>	<input checked="" type="checkbox"/>

CONTAINER TYPE:

Solid: 4ozCGJ 8ozCGJ 16ozCGJ Sleeve EnCores® TerraCores® _____

Water: VOA VOA⁽³⁾h VOAna₂ 125AGB 125AGBh 125AGBpo₄ 1AGB 1AGBna₂

1AGBs 500AGB 500AGBs 250CGB 250CGBs 1PB 500PB 500PBna 250PB

250PBn 125PB 125PBznnna 100PBsterile 100PBna₂ _____ _____ _____

Air: Tedlar® Summa® _____

Checked/Labeled by: PS

Container: C:Clear A:Amber P:Poly/Plastic G:Glass J:Jar B: Bottle Reviewed by: POP

Preservative: h:HCL n:HNO₃ na₂:Na₂S₂O₃ na:NaOH po₄:H₃PO₄ s:H₂SO₄ znnna:ZnAc₂+NaOH Scanned by: PS

ATTACHMENT

FIELD PROCEDURES FOR GROUNDWATER SAMPLING

The sampling procedures for groundwater monitoring events are contained in this appendix.

Equipment Calibration

Standard groundwater sampling equipment – pH/Conductivity/Temperature meter, and dissolved oxygen (DO) meters are calibrated prior to all field work. All calibration is conducted in accordance with equipment manufacturer's recommended procedure and buffer solutions. MSDS for all buffer solutions are maintained in Stratus vehicles. Calibration is completed everyday prior to field work and also once a week. The pH probe is calibrated for a pH of 7.0 daily and for 4.0, 7.0 and 10.0 weekly. The conductivity probe is calibrated for 1413 μs daily and 1413 μs and 447 μs weekly. The temperature probe is calibrated weekly with a NIST-traceable thermometer. The DO probe is calibrated for 100% oxygen daily and 0% and 100% oxygen weekly. All calibration logs are maintained in the Stratus office.

Groundwater and Liquid-Phase Petroleum Hydrocarbon Depth Assessment

Prior to measuring the depth to liquid in the well, the well caps are removed and the liquid level allowed to stabilize. A water/hydrocarbon interface probe is used to assess the liquid-phase petroleum hydrocarbon (LPH) thickness, if present, and a water level indicator is used to measure the groundwater depth in monitoring wells that do not contain LPH. Depth to groundwater or LPH is measured from a datum point at the top of each monitoring well casing. The datum point is typically a notch cut in the north side of the casing edge. If a water level indicator is used, the tip is subjectively analyzed for hydrocarbon sheen.

Subjective Analysis of Groundwater

Prior to purging, a water sample is collected from the monitoring well for subjective assessment. The sample is retrieved by gently lowering a clean, disposable bailer to approximately one-half the bailer length past the air/liquid interface. The bailer is then retrieved, and the sample contained within the bailer is examined for floating LPH and the appearance of a LPH sheen.

Monitoring Well Sampling

In many cases, determining whether to purge or not to purge wells prior to sample collection is made in the field and is often based on depth to water relative to the screen interval of the well. Site-specific field data sheets present details associated with the purge method and equipment used.

Monitoring wells, when purged, use a pump or bailer until pH, temperature, and conductivity of the purge water has stabilized and a minimum of three well volumes of water has been removed. Field measuring equipment is calibrated and maintained according to the manufacturer's instructions. If three well volumes cannot be removed in one half hour's time the well is allowed to recharge to 80% of original level. After recharging, a groundwater sample is then collected from each of the wells using disposable bailers.

A Teflon bailer, electric submersible or bladder pump will be the only equipment used for well sampling. When samples for volatile organic analysis are being collected, the pump flow will be regulated at approximately 100 milliliters per minute to minimize pump effluent turbulence and aeration. Glass bottles of at least 40-milliliters volume and fitted with Teflon-lined septa will be used in sampling for volatile organics. These bottles will be filled completely to prevent air accumulation in the bottle. A positive meniscus forms when the bottle is completely full. A convex Teflon septum will be placed over the positive meniscus to eliminate air. After the bottle is capped, it is inverted and tapped to verify that it contains no air bubbles. The sample containers for other parameters will be filled, filtered as required, and capped. Glass and plastic bottles used by Stratus to collect groundwater samples are supplied by the laboratory.

Groundwater Sample Labeling and Preservation

Samples are collected in appropriate containers supplied by the laboratory. All required chemical preservation is added to the bottles prior to delivery to Stratus. Sample label information includes a unique sample identification number, job identification number, date, and time. After labeling, all groundwater samples are placed in a Ziploc[®] type bag and placed in an ice chest cooled to approximately 4° Celsius. Upon arriving at Stratus' office the samples are transferred to a locked refrigerator cooled to approximately 4° Celsius. Chemical preservation is controlled by the required analysis and is noted on the chain-of-custody form. Trip and temperature blanks supplied by the laboratory accompany the groundwater sample containers and groundwater samples.

Sample Identification and Chain-of-Custody Procedures

Sample identification and chain-of-custody procedures document sample possession from the time of collection to ultimate disposal. Each sample container submitted for analysis has a label affixed to identify the job number, sampler, date and time of sample collection, and a sample number unique to that sample. This information, in addition to a description of the sample, field measurements made, sampling methodology, names of on-site personnel, and any other pertinent field observations, is recorded in the field records. The samples are analyzed by a California-certified laboratory.

A chain-of-custody form is used to record possession of the sample from time of collection to its arrival at the laboratory. When the samples are shipped, the person in custody of them relinquishes the samples by signing the chain-of-custody form and noting the time. The sample-control officer at the laboratory verifies sample integrity and confirms that the samples are collected in the proper containers, preserved correctly, and

contain adequate volumes for analysis. These conditions are noted on a Laboratory Sample Receipt Checklist that becomes part of the laboratory report upon request.

If these conditions are met, each sample is assigned a unique log number for identification throughout analysis and reporting. The log number is recorded on the chain-of-custody form and in the legally-required log book maintained by the laboratory. The sample description, date received, client's name, and other relevant information is also recorded.

Equipment Cleaning

All reusable sampling equipments are cleaned using phosphate-free detergents and rinsed with de-ionized water.

APPENDIX B

GEOTRACKER UPLOAD CONFIRMATION

STATE WATER RESOURCES CONTROL BOARD
GEOTRACKER ESI

UPLOADING A GEO_WELL FILE

SUCCESS

Processing is complete. No errors were found!
Your file has been successfully submitted!

<u>Submittal Type:</u>	GEO_WELL
<u>Submittal Title:</u>	1Q09 GEO_WELL 771
<u>Facility Global ID:</u>	T0600100113
<u>Facility Name:</u>	ARCO #00771
<u>File Name:</u>	GEO_WELL.zip
<u>Organization Name:</u>	Broadbent & Associates, Inc.
<u>Username:</u>	BROADBENT-C
<u>IP Address:</u>	67.118.40.90
<u>Submittal Date/Time:</u>	3/20/2009 12:38:05 PM
<u>Confirmation Number:</u>	5165661036

STATE WATER RESOURCES CONTROL BOARD
GEOTRACKER ESI

UPLOADING A EDF FILE

SUCCESS

Processing is complete. No errors were found!
Your file has been successfully submitted!

<u>Submittal Type:</u>	EDF - Monitoring Report - Quarterly
<u>Submittal Title:</u>	1Q09 GW Monitoring
<u>Facility Global ID:</u>	T0600100113
<u>Facility Name:</u>	ARCO #00771
<u>File Name:</u>	09010884.zip
<u>Organization Name:</u>	Broadbent & Associates, Inc.
<u>Username:</u>	BROADBENT-C
<u>IP Address:</u>	67.118.40.90
<u>Submittal Date/Time:</u>	3/20/2009 12:39:30 PM
<u>Confirmation Number:</u>	4393846809

[VIEW QC REPORT](#)

[VIEW DETECTIONS REPORT](#)