



Atlantic Richfield Company  
(a BP affiliated company)

P.O. Box 1257  
San Ramon, CA 94583  
Phone: (925) 275-3801  
Fax: (925) 275-3815

**RECEIVED**

9:43 am, May 02, 2008

Alameda County  
Environmental Health



April 30, 2008

Re: First Quarter, 2008 Semi-Annual Ground-Water Monitoring Report  
Atlantic Richfield Company Station #771  
899 Rincon Avenue  
Livermore, California  
ACEH Case RO0000200

"I declare, that to the best of my knowledge at the present time, that the information and/or recommendations contained in the attached document are true and correct."

Submitted by:

Paul Supple  
Environmental Business Manager

April 30, 2008

Project No. 06-02-608

Atlantic Richfield Company  
P.O. Box 1257  
San Ramon, CA 94583  
Submitted via ENFOS

Attn.: Mr. Paul Supple

Re: First Quarter, 2008 Semi-Annual Ground-Water Monitoring Report, Atlantic Richfield Company Station #771, 899 Rincon Avenue, Livermore California. ACEH Case RO0000200.

Dear Mr. Supple:

Attached is the *First Quarter, 2008 Semi-Annual Ground-Water Monitoring Report* for Atlantic Richfield Company Station #771 (herein referred to as Station #771) located at 899 Rincon Avenue, Livermore, California (Property). This report presents a summary of First Quarter, 2008 ground-water monitoring results.

Should you have questions regarding the work performed or results obtained, please do not hesitate to contact us at (530) 566-1400.

Sincerely,

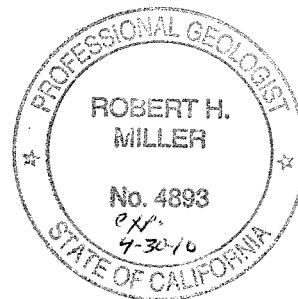
BROADBENT & ASSOCIATES, INC.



Matthew G. Herrick, P.G.  
Senior Hydrogeologist



Robert H. Miller, P.G., C.H.G.  
Principal Hydrogeologist



Enclosures

cc: Mr. Paresh Khatri, Alameda County Environmental Health, 1131 Harbor Bay Parkway, Suite 250, Alameda, CA, 94502 (Submitted via ACEH ftp Site)  
Mr. Paul M. Smith, Livermore-Pleasanton Fire Department, 3560 Nevada St., Pleasanton, CA 94566  
Mr. Chuck Headlee, RWQCB, 1515 Clay St. Suite 1400, Oakland, CA 94612 (Submitted via GeoTracker)  
GeoTracker

## STATION #771 SEMI-ANNUAL GROUND-WATER MONITORING REPORT

Facility: #771	Address:	899 Rincon Avenue, Livermore, CA
Station #771 Environmental Business Manager:		Mr. Paul Supple
Consulting Co./Contact Persons:		Broadbent & Associates, Inc. (BAI) / Rob Miller & Matt Herrick
Primary Agency/Regulatory ID No.:		Alameda County Environmental Health (ACEH)/ ACEH Case RO0000200
Consultant Project No.:		06-02-608
Facility Permits/Permitting Agency.:		NA

### WORK PERFORMED THIS QUARTER (First Quarter, 2008):

1. Submitted Fourth Quarter, 2008 Status Report. Work performed by BAI.
2. Conducted ground-water monitoring/sampling for First Quarter, 2008. Work performed by Stratus Environmental, Inc.

### WORK PROPOSED FOR NEXT QUARTER (Second Quarter, 2008):

1. Submit First Quarter, 2008 Semi-Annual Ground-Water Monitoring Report (contained herein).
2. No environmental work activities are scheduled to be completed on the Property during the Second Quarter, 2008.

### QUARTERLY RESULTS SUMMARY:

Current phase of project:	<b>Monitoring</b>
Frequency of ground-water sampling:	<b>MW-4, MW-7, RW-1 = Semi-Annual (1Q and 3Q) MW-2, MW-5, MW-6, MW-11, VW-1, = Annual (3Q)</b>
Frequency of ground-water monitoring:	<b>Semi-annual (1Q and 3Q)</b>
Is free product (FP) present on-site:	<b>No</b>
FP recovered this quarter:	<b>NA (FP last recovered in 1992)</b>
Cumulative FP recovered:	<b>3.06 gallons, Wells MW-1, MW-2, and MW-5</b>
Current remediation techniques:	<b>Air Diffusion</b>
Depth to ground water (below TOC):	<b>21.87 (VW-1) to 31.52 (MW-8)</b>
General ground-water flow direction:	<b>North</b>
Approximate hydraulic gradient:	<b>0.04 feet per foot</b>

### DISCUSSION:

During First Quarter, 2008 gasoline range organics (GRO) were detected in wells MW-4 and MW-7 at concentrations of 220 µg/L and 3,500 µg/L, respectively. Benzene was detected in wells MW-4 and MW-7 at concentrations of 1.2 µg/L and 120 µg/L, respectively. Toluene was detected in MW-7 with a concentration of 3.6 µg/L. Ethylbenzene was detected in MW-7 with a concentration of 9.0 µg/L. Xylenes (total) were detected in MW-4 and MW-7 at concentrations of 0.50 µg/L and 29 µg/L, respectively. Methyl tert-butyl ether (MTBE) was detected in wells MW-4, MW-7, and RW-1 with concentrations ranging from 8.3 µg/L to 61 µg/L in wells RW-1 and MW-4, respectively. Tert-Butyl alcohol (TBA) was detected in MW-4 with a concentration of 280 µg/L. No other analytes were detected in samples collected during First Quarter, 2008.

Analytes detected during First Quarter, 2008 were all within the historic minimum and maximum concentration ranges recorded for each well, with the following exception: ethylbenzene in MW-7 is the lowest concentrations historically detected in the well. Ground-water elevations measured during First Quarter, 2008 were within historic minimum and maximum ranges for each well.

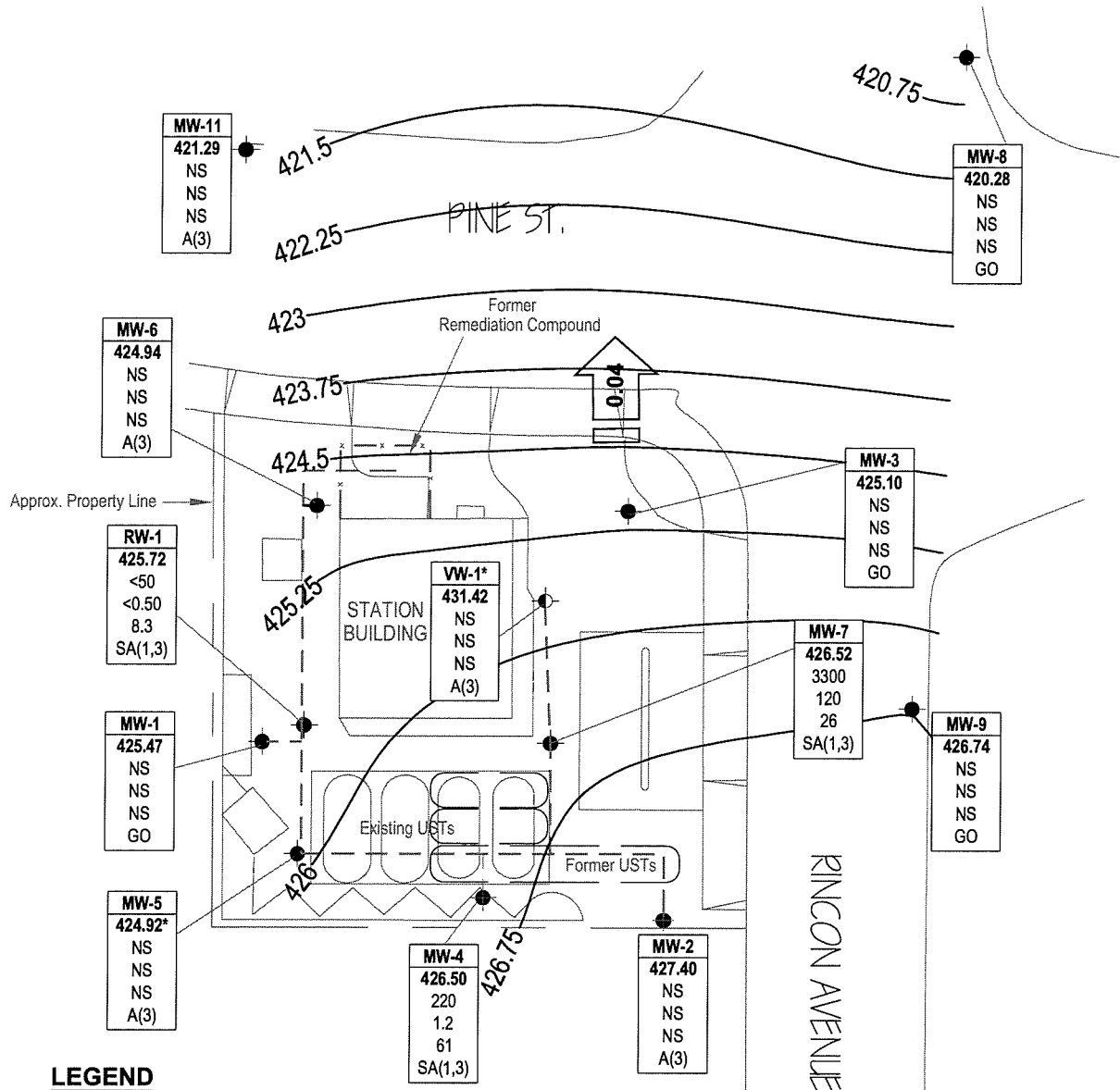
Drawing 1 depicts the ground-water elevation contour and an analytical summary map for the First Quarter, 2008. Table 1 includes a summary of ground-water monitoring data including relative water elevations and laboratory analyses. Table 2 provides a summary of fuel additives analytical data. Table 3 lists historical ground-water flow direction and gradient data.

## **CLOSURE:**

The findings presented in this report are based upon: observations of Stratus field personnel (see Appendix A), the points investigated, and results of laboratory tests performed by TestAmerica (Morgan Hill, CA). Our services were performed in accordance with the generally accepted standard of practice at the time this report was written. No other warranty, expressed or implied was made. This report has been prepared for the exclusive use of Atlantic Richfield Company. It is possible that variations in soil or ground-water conditions could exist beyond points explored in this investigation. Also, changes in site conditions could occur in the future due to variations in rainfall, temperature, regional water usage, or other factors.

## **ATTACHMENTS:**

- Drawing 1. Ground-Water Elevation Contour and Analytical Summary Map, Station #771, Livermore, CA
- Table 1. Summary of Ground-Water Monitoring Data: Relative Water Elevations and Laboratory Analyses, Station #771, Livermore, CA
- Table 2. Summary of Fuel Additives Analytical Data, Station #771, Livermore, CA
- Table 3. Historical Ground-Water Flow Direction and Gradient, Station #771, Livermore, CA
- Appendix A. Stratus Environmental, Inc. Ground-Water Sampling Data Package (Includes Field Data Sheets, Non-Hazardous Waste Data Form, and Certified Laboratory Analytical Results and Chain of Custody Documentation)
- Appendix B. GeoTracker Upload Confirmation



**LEGEND**

- Monitoring well location
- Vapor extraction well location

<b>Well ID</b>	Well designation
<b>ELEV</b>	Ground-water elevation (ft above MSL)
<b>GRO</b>	GRO, Benzene & MTBE concentrations (µg/L)
<b>MTBE</b>	Sampling frequency
<b>SA or A</b>	

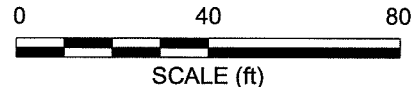
- < Not detected at or above laboratory reporting limits
- \* Not used in contouring
- NS Not sampled
- A(3) Sampled annually during 3rd quarter
- GO Not sampled, gauged only
- SA(1,3) Sampled semi-annually, 1st & 3rd quarters

— 423.75 Ground-water elevation contour (ft above MSL)

← 0.04 Approximate ground-water flow direction and gradient (ft/ft)

- - - Remediation piping

<b>MW-10</b>
427.03
NS
NS
NS
GO



NOTE: SITE MAP ADAPTED FROM URS FIGURES. SITE DIMENSIONS AND FACILITY LOCATIONS NOT VERIFIED.

**Table 1. Summary of Ground-Water Monitoring Data: Relative Water Elevations and Laboratory Analyses**  
**Station #771, 899 Rincon Ave., Livermore, CA**

Well and Sample Date	P/NP	Comments	TOC (feet msl)	Top of Screen (ft bgs)	Bottom of Screen (ft bgs)	DTW (feet bgs)	Water Level Elevation (feet msl)	Concentrations in (µg/L)						DO (mg/L)	pH
								GRO/TPHg	Benzene	Toluene	Ethyl-Benzene	Total Xylenes	MTBE		
MW-1															
3/20/1995	--		451.73	32.00	41.00	24.50	427.23	90,000	1,800	1,100	1,000	5,600	--	--	--
6/2/1995	--		451.73	32.00	41.00	25.60	426.13	81,000	2,000	1,400	990	4,600	--	--	--
8/23/1995	--		451.73	32.00	41.00	29.04	422.69	44,000	2,400	1,900	670	3,800	<300	--	--
12/4/1995	--		451.73	32.00	41.00	31.31	420.42	22,000	870	660	390	2,200	--	--	--
2/20/1996	--		451.73	32.00	41.00	22.26	429.47	21,000	1,500	1,200	650	3,500	<300	--	--
5/15/1996	--		451.73	32.00	41.00	23.42	428.31	36,000	3,000	2,500	960	5,700	<250	--	--
8/13/1996	--		451.73	32.00	41.00	26.83	424.90	19,000	730	580	450	2,500	<200	--	--
11/13/1996	--		451.73	32.00	41.00	31.05	420.68	6,600	47	16	74	160	<30	--	--
3/26/1997	--		451.73	32.00	41.00	26.29	425.44	1,900	100	55	37	200	<30	--	--
5/15/1997	--		451.73	32.00	41.00	28.65	423.08	16,000	490	250	250	1,100	<120	--	--
8/26/1997	--		451.73	32.00	41.00	31.53	420.20	190	6.7	3	6.3	25	<3	--	--
11/5/1997	--		451.73	32.00	41.00	33.93	417.80	63	0.5	<0.5	0.8	2.4	29	--	--
2/18/1998	--		451.73	32.00	41.00	20.46	431.27	23,000	1,500	610	550	3,000	<120	--	--
5/20/1998	--		451.73	32.00	41.00	23.84	427.89	50,000	4,400	1,900	1,400	80,000	<300	--	--
7/30/1998	P		451.73	32.00	41.00	26.94	424.79	150	<0.5	<0.5	<0.5	1.6	<3	8.74	--
10/29/1998	NP		451.73	32.00	41.00	32.58	419.15	<50	<0.5	<0.5	<0.5	1.8	<3	2.0	--
3/16/1999	P		451.73	32.00	41.00	26.20	425.53	3,200	160	32	89	390	270	2.0	--
5/5/1999	P		451.73	32.00	41.00	27.57	424.16	3,600	140	46	76	290	170	11.65	--
8/26/1999	P		451.73	32.00	41.00	30.25	421.48	3,200	210	29	100	220	120	1.43	--
12/3/1999	NP		451.73	32.00	41.00	32.70	419.03	53	<0.5	<0.5	<0.5	1	<3	2.12	--
3/13/2000	P		451.73	32.00	41.00	24.45	427.28	<50	<0.5	<0.5	<0.5	<1	<3	5.81	--
6/20/2000	--	b	451.73	32.00	41.00	--	--	67.4	3.88	<0.500	1.78	1.48	<2.50	--	--
6/20/2000	P		451.73	32.00	41.00	27.79	423.94	356	40.1	7.17	11.9	22.7	<2.50	5.1	--
8/31/2000	--		451.73	32.00	41.00	30.35	421.38	--	--	--	--	--	--	--	--
2/9/2001	--		451.73	32.00	41.00	30.95	420.78	--	--	--	--	--	--	--	--
9/17/2001	--		451.73	32.00	41.00	30.85	420.88	--	--	--	--	--	--	--	--
1/21/2002	--		451.73	32.00	41.00	30.61	421.12	--	--	--	--	--	--	--	--
7/19/2002	--		451.73	32.00	41.00	31.55	420.18	--	--	--	--	--	--	--	--
1/15/2003	--		451.73	32.00	41.00	22.99	428.74	--	--	--	--	--	--	--	--
7/9/2003	--		451.73	32.00	41.00	30.35	421.38	--	--	--	--	--	--	--	--
02/19/2004	--		451.73	32.00	41.00	26.24	425.49	--	--	--	--	--	--	--	--

Table 1. Summary of Ground-Water Monitoring Data: Relative Water Elevations and Laboratory Analyses

Station #771, 899 Rincon Ave., Livermore, CA

Well and Sample Date	P/NP	Comments	TOC (feet msl)	Top of Screen (ft bgs)	Bottom of Screen (ft bgs)	DTW (feet bgs)	Water Level Elevation (feet msl)	Concentrations in (µg/L)						DO (mg/L)	pH
								GRO/TPHg	Benzene	Toluene	Ethyl-Benzene	Total Xylenes	MTBE		
<b>MW-1 Cont.</b>															
08/04/2004	--		454.23	32.00	41.00	26.36	427.87	--	--	--	--	--	--	--	--
01/18/2005	--		454.23	32.00	41.00	24.47	429.76	--	--	--	--	--	--	--	--
07/15/2005	--		454.23	32.00	41.00	29.44	424.79	--	--	--	--	--	--	--	--
01/10/2006	--		454.23	32.00	41.00	22.58	431.65	--	--	--	--	--	--	--	--
7/21/2006	--		454.23	32.00	41.00	20.73	433.50	--	--	--	--	--	--	--	--
1/17/2007	--		454.23	32.00	41.00	31.88	422.35	--	--	--	--	--	--	--	--
7/18/2007	--		454.23	32.00	41.00	32.85	421.38	--	--	--	--	--	--	--	--
1/15/2008	--		<b>454.23</b>	<b>32.00</b>	<b>41.00</b>	<b>28.76</b>	<b>425.47</b>	--	--	--	--	--	--	--	--
<b>MW-2</b>															
3/20/1995	--		449.49	30.00	38.00	20.27	429.22	54,000	2,600	1,600	1,200	7,600	--	--	--
6/2/1995	--		449.49	30.00	38.00	22.32	427.17	37,000	2,200	800	980	4,800	--	--	--
8/23/1995	--		449.49	30.00	38.00	25.69	423.80	65,000	1,100	310	840	3,000	<500	--	--
12/4/1995	--		449.49	30.00	38.00	28.52	420.97	19,000	680	150	410	1,600	--	--	--
2/20/1996	--		449.49	30.00	38.00	19.00	430.49	22,000	1,200	240	590	2,200	<300	--	--
5/15/1996	--		449.49	30.00	38.00	20.03	429.46	25,000	1,200	240	610	2,100	<300	--	--
8/13/1996	--		449.49	30.00	38.00	24.44	425.05	19,000	640	110	420	1,200	<300	--	--
11/13/1996	--		449.49	30.00	38.00	28.42	421.07	15,000	260	52	220	640	<200	--	--
3/26/1997	--		449.49	30.00	38.00	22.98	426.51	17,000	580	120	360	980	<120	--	--
5/15/1997	--		449.49	30.00	38.00	25.40	424.09	18,000	420	63	340	730	<120	--	--
8/26/1997	--		449.49	30.00	38.00	28.38	421.11	5,300	210	26	140	270	<120	--	--
11/5/1997	--		449.49	30.00	38.00	31.93	417.56	560	42	2.6	7	9	<40	--	--
2/18/1998	--		449.49	30.00	38.00	16.87	432.62	18,000	710	120	480	1,100	130	--	--
5/20/1998	--		449.49	30.00	38.00	20.29	429.20	16,000	480	72	440	1,100	<120	--	--
7/30/1998	P		449.49	30.00	38.00	23.51	425.98	9,700	240	33	210	490	<120	9.21	--
10/29/1998	NP		449.49	30.00	38.00	30.08	419.41	58	<0.5	<0.5	<0.5	1.2	<3	1.0	--
3/16/1999	P		449.49	30.00	38.00	23.22	426.27	4,700	120	13	90	220	60	2.0	--
5/5/1999	P		449.49	30.00	38.00	24.05	425.44	5,500	58	7.1	58	98	17	9.09	--
8/26/1999	P		449.49	30.00	38.00	26.44	423.05	3,700	55	11	60	64	26	1.9	--
12/3/1999	NP		449.49	30.00	38.00	30.15	419.34	130	<0.5	<0.5	0.7	1.8	<3	1.96	--
3/13/2000	P		449.49	30.00	38.00	20.68	428.81	<50	<0.5	<0.5	<0.5	<1	<3	--	--

Table 1. Summary of Ground-Water Monitoring Data: Relative Water Elevations and Laboratory Analyses

Station #771, 899 Rincon Ave., Livermore, CA

Well and Sample Date	P/NP	Comments	TOC (feet msl)	Top of Screen (ft bgs)	Bottom of Screen (ft bgs)	DTW (feet bgs)	Water Level Elevation (feet msl)	Concentrations in (µg/L)						DO (mg/L)	pH
								GRO/TPHg	Benzene	Toluene	Ethyl-Benzene	Total Xylenes	MTBE		
<b>MW-2 Cont.</b>															
6/20/2000	P		449.49	30.00	38.00	23.08	426.41	226	2.2	<0.500	4.83	7.88	<2.50	4.9	--
8/31/2000	P		449.49	30.00	38.00	26.71	422.78	87.1	1.78	<0.500	1.33	1.15	<2.50	1.59	--
2/9/2001	--		449.49	30.00	38.00	29.65	419.84	--	--	--	--	--	--	--	--
9/17/2001	P		449.49	30.00	38.00	27.62	421.87	3,100	300	12	8.8	18	120	1.7	--
1/21/2002	--		449.49	30.00	38.00	27.09	422.40	--	--	--	--	--	--	--	--
7/19/2002	P	a	449.49	30.00	38.00	27.82	421.67	4,700	280	13	120	19	16	0.8	7.4
1/15/2003	--		449.49	30.00	38.00	22.18	427.31	--	--	--	--	--	--	--	--
7/9/2003	--		449.49	30.00	38.00	26.40	423.09	3,900	170	<5.0	100	19	39	2.5	7.0
02/19/2004	--		449.49	30.00	38.00	23.85	425.64	--	--	--	--	--	--	--	--
08/04/2004	P		452.05	30.00	38.00	24.71	427.34	5,400	650	21	160	56	78	0.8	7.2
01/18/2005	--		452.05	30.00	38.00	20.86	431.19	--	--	--	--	--	--	--	--
07/15/2005	P		452.05	30.00	38.00	25.92	426.13	5,200	160	5.3	56	10	46	3.1	6.9
01/10/2006	--		452.05	30.00	38.00	19.25	432.80	--	--	--	--	--	--	--	--
7/21/2006	P		452.05	30.00	38.00	25.73	426.32	120	0.90	<0.50	<0.50	<0.50	<0.50	6.08	8.3
1/17/2007	--		452.05	30.00	38.00	28.70	423.35	--	--	--	--	--	--	--	--
7/18/2007	P		452.05	30.00	38.00	29.07	422.98	2,300	58	2.4	9.5	3.5	45	1.19	7.51
<b>1/15/2008</b>	<b>--</b>		<b>452.05</b>	<b>30.00</b>	<b>38.00</b>	<b>24.65</b>	<b>427.40</b>	<b>--</b>	<b>--</b>	<b>--</b>	<b>--</b>	<b>--</b>	<b>--</b>	<b>--</b>	<b>--</b>
<b>MW-3</b>															
3/20/1995	--		450.28	32.00	40.00	22.19	428.09	94	<0.5	<0.5	<0.5	<0.5	--	--	--
6/2/1995	--		450.28	32.00	40.00	23.28	427.00	72	<0.5	<0.5	<0.5	<0.5	--	--	--
8/23/1995	--		450.28	32.00	40.00	26.55	423.73	98	<0.5	<0.5	<0.6	0.5	<3	--	--
12/4/1995	--		450.28	32.00	40.00	29.52	420.76	<50	<0.5	<0.5	<0.5	<0.5	--	--	--
2/20/1996	--		450.28	32.00	40.00	19.83	430.45	130	<0.5	<0.5	<0.5	<0.5	<3	--	--
5/15/1996	--		450.28	32.00	40.00	21.03	429.25	120	<0.5	<0.5	<0.5	<0.5	<0.5	--	--
8/13/1996	--		450.28	32.00	40.00	25.67	424.61	<50	<0.5	<0.5	<0.5	<0.5	<3	--	--
11/13/1996	--		450.28	32.00	40.00	21.57	428.71	<50	<0.5	<0.5	<0.5	<0.5	<3	--	--
3/26/1997	--		450.28	32.00	40.00	24.15	426.13	<50	1.1	<0.5	<0.5	<0.5	<3	--	--
5/15/1997	--		450.28	32.00	40.00	26.85	423.43	<50	<0.5	<0.5	<0.5	<0.5	<3	--	--
8/26/1997	--		450.28	32.00	40.00	30.07	420.21	<50	<0.5	<0.5	<0.5	<0.5	<3	--	--
11/5/1997	--		450.28	32.00	40.00	32.46	417.82	<50	<0.5	0.7	<0.5	<0.5	<3	--	--



Table 1. Summary of Ground-Water Monitoring Data: Relative Water Elevations and Laboratory Analyses

Station #771, 899 Rincon Ave., Livermore, CA

Well and Sample Date	P/NP	Comments	TOC (feet msl)	Top of Screen (ft bgs)	Bottom of Screen (ft bgs)	DTW (feet bgs)	Water Level Elevation (feet msl)	Concentrations in (µg/L)						DO (mg/L)	pH
								GRO/TPHg	Benzene	Toluene	Ethyl-Benzene	Total Xylenes	MTBE		
<b>MW-3 Cont.</b>															
2/18/1998	--		450.28	32.00	40.00	17.82	432.46	<50	<0.5	<0.5	<0.5	<0.5	<3	--	--
5/20/1998	--		450.28	32.00	40.00	21.41	428.87	<50	<0.5	<0.5	<0.5	<0.5	<3	--	--
7/30/1998	P		450.28	32.00	40.00	26.41	423.87	<50	<0.5	<0.5	<0.5	<0.5	<3	9.56	--
10/29/1998	P		450.28	32.00	40.00	31.33	418.95	<50	<0.5	<0.5	<0.5	<0.5	<3	1.0	--
3/16/1999	P		450.28	32.00	40.00	24.61	425.67	<50	<0.5	<0.5	<0.5	<0.5	<3	1.0	--
5/5/1999	P		450.28	32.00	40.00	25.75	424.53	140	<0.5	<0.5	0.6	<0.5	<3	4.43	--
8/26/1999	P		450.28	32.00	40.00	28.49	421.79	80	0.6	0.6	0.6	1	<3	1.69	--
12/3/1999	P		450.28	32.00	40.00	31.45	418.83	<50	<0.5	<0.5	<0.5	<1	<3	2.26	--
3/13/2000	P		450.28	32.00	40.00	22.18	428.10	<50	<0.5	<0.5	<0.5	<1	<3	4.41	--
6/20/2000	P		450.28	32.00	40.00	26.03	424.25	<50.0	<0.500	<0.500	<0.500	<0.500	<2.50	2.3	--
8/31/2000	--		450.28	32.00	40.00	28.75	421.53	--	--	--	--	--	--	--	--
2/9/2001	--		450.28	32.00	40.00	31.04	419.24	--	--	--	--	--	--	--	--
9/17/2001	--		450.28	32.00	40.00	29.04	421.24	--	--	--	--	--	--	--	--
1/21/2002	--		450.28	32.00	40.00	28.81	421.47	--	--	--	--	--	--	--	--
7/19/2002	--		450.28	32.00	40.00	28.92	421.36	--	--	--	--	--	--	--	--
1/15/2003	--		450.28	32.00	40.00	22.88	427.40	--	--	--	--	--	--	--	--
7/9/2003	--		450.28	32.00	40.00	28.00	422.28	--	--	--	--	--	--	--	--
02/19/2004	--		450.28	32.00	40.00	25.29	424.99	--	--	--	--	--	--	--	--
08/04/2004	--		452.75	32.00	40.00	27.40	425.35	--	--	--	--	--	--	--	--
01/18/2005	--		452.75	32.00	40.00	22.76	429.99	--	--	--	--	--	--	--	--
07/15/2005	--		452.75	32.00	40.00	25.95	426.80	--	--	--	--	--	--	--	--
01/10/2006	--		452.75	32.00	40.00	21.18	431.57	--	--	--	--	--	--	--	--
7/21/2006	--		452.75	32.00	40.00	25.73	427.02	--	--	--	--	--	--	--	--
1/17/2007	--		452.75	32.00	40.00	30.51	422.24	--	--	--	--	--	--	--	--
7/18/2007	--		452.75	32.00	40.00	29.53	423.22	--	--	--	--	--	--	--	--
<b>1/15/2008</b>	<b>--</b>		<b>452.75</b>	<b>32.00</b>	<b>40.00</b>	<b>27.65</b>	<b>425.10</b>	<b>--</b>	<b>--</b>	<b>--</b>	<b>--</b>	<b>--</b>	<b>--</b>	<b>--</b>	<b>--</b>
<b>MW-4</b>															
3/20/1995	--		451.09	26.00	42.00	22.68	428.41	12,000	1,000	100	450	700	--	--	--
6/2/1995	--		451.09	26.00	42.00	24.41	426.68	9,000	850	56	380	430	--	--	--
8/23/1995	--		451.09	26.00	42.00	27.72	423.37	5,300	400	25	240	170	<100	--	--

**Table 1. Summary of Ground-Water Monitoring Data: Relative Water Elevations and Laboratory Analyses**  
**Station #771, 899 Rincon Ave., Livermore, CA**

Well and Sample Date	P/NP	Comments	TOC (feet msl)	Top of Screen (ft bgs)	Bottom of Screen (ft bgs)	DTW (feet bgs)	Water Level Elevation (feet msl)	Concentrations in (µg/L)						DO (mg/L)	pH
								GRO/TPHg	Benzene	Toluene	Ethyl-Benzene	Total Xylenes	MTBE		
MW-4 Cont.															
12/4/1995	--		451.09	26.00	42.00	29.85	421.24	6,700	100	<10	90	38	--	--	--
2/20/1996	--		451.09	26.00	42.00	21.16	429.93	7,000	360	22	180	160	<70	--	--
5/15/1996	--		451.09	26.00	42.00	22.18	428.91	--	--	--	--	--	--	--	--
8/13/1996	--		451.09	26.00	42.00	26.20	424.89	--	--	--	--	--	--	--	--
11/13/1996	--		451.09	26.00	42.00	29.72	421.37	--	--	--	--	--	--	--	--
3/26/1997	--		451.09	26.00	42.00	21.86	429.23	8,900	390	33	200	250	<70	--	--
5/15/1997	--		451.09	26.00	42.00	26.92	424.17	--	--	--	--	--	--	--	--
8/26/1997	--		451.09	26.00	42.00	29.30	421.79	--	--	--	--	--	--	--	--
11/5/1997	--		451.09	26.00	42.00	32.14	418.95	--	--	--	--	--	--	--	--
2/18/1998	--		451.09	26.00	42.00	19.30	431.79	5,300	220	19	160	130	120	--	--
5/20/1998	--		451.09	26.00	42.00	22.40	428.69	--	--	--	--	--	--	--	--
7/30/1998	--		451.09	26.00	42.00	25.74	425.35	--	--	--	--	--	--	--	--
10/29/1998	--		451.09	26.00	42.00	31.26	419.83	--	--	--	--	--	--	--	--
3/16/1999	P		451.09	26.00	42.00	25.05	426.04	1,900	49	<5	43	<5	82	1.5	--
5/5/1999	--		451.09	26.00	42.00	26.15	424.94	--	--	--	--	--	--	--	--
8/26/1999	--		451.09	26.00	42.00	28.60	422.49	--	--	--	--	--	--	1.43	--
12/3/1999	--		451.09	26.00	42.00	31.53	419.56	--	--	--	--	--	--	--	--
3/13/2000	P		451.09	26.00	42.00	23.61	427.48	<50	<0.5	<0.5	<0.5	<1	<3	3.82	--
6/20/2000	--		451.09	26.00	42.00	26.38	424.71	--	--	--	--	--	--	0.4	--
8/31/2000	NP		451.09	26.00	42.00	29.55	421.54	<50.0	<0.500	<0.500	<0.500	<0.500	<2.50	1.04	--
2/9/2001	NP		451.09	26.00	42.00	30.30	420.79	<50.0	<0.500	<0.500	<0.500	<0.500	<2.50	1.39	--
9/17/2001	NP		451.09	26.00	42.00	29.90	421.19	3,400	51	<5.0	16	23	360	0.92	--
1/21/2002	NP		451.09	26.00	42.00	29.51	421.58	1,900	140	12	27	48	300	1.03	--
7/19/2002	NP	a	451.09	26.00	42.00	30.77	420.32	2,700	150	9.9	<5.0	<5.0	130	1.0	7.3
1/15/2003	--	a	451.09	26.00	42.00	23.56	427.53	4,800	150	5.3	28	46	150	1.3	7.0
7/9/2003	--		451.09	26.00	42.00	29.50	421.59	3,000	210	9.4	6	20	150	2.0	6.9
02/19/2004	P	c	451.09	26.00	42.00	26.35	424.74	4,800	270	11	25	19	180	1.8	6.2
08/04/2004	NP		453.80	26.00	42.00	26.48	427.32	4,200	410	13	49	59	300	0.7	6.7
01/18/2005	P		453.80	26.00	42.00	23.15	430.65	4,500	250	9.5	62	22	160	1.2	6.9
07/15/2005	NP		453.80	26.00	42.00	28.13	425.67	3,500	230	6.1	19	15	230	0.5	7.0
01/10/2006	P		453.80	26.00	42.00	21.49	432.31	5,500	250	7.6	37	25	190	1.3	7.1

Table 1. Summary of Ground-Water Monitoring Data: Relative Water Elevations and Laboratory Analyses

Station #771, 899 Rincon Ave., Livermore, CA

Well and Sample Date	P/NP	Comments	TOC (feet msl)	Top of Screen (ft bgs)	Bottom of Screen (ft bgs)	DTW (feet bgs)	Water Level Elevation (feet msl)	Concentrations in (µg/L)						DO (mg/L)	pH
								GRO/TPHg	Benzene	Toluene	Ethyl-Benzene	Total Xylenes	MTBE		
<b>MW-4 Cont.</b>															
7/21/2006	NP		453.80	26.00	42.00	28.88	424.92	66	0.60	<0.50	0.52	0.82	3.1	4.75	8.3
1/17/2007	NP		453.80	26.00	42.00	30.80	423.00	<50	<0.50	<0.50	<0.50	<0.50	11	6.19	8.03
7/18/2007	NP		453.80	26.00	42.00	32.00	421.80	2,400	140	6.8	1.3	4.1	74	5.03	7.12
<b>1/15/2008</b>	<b>NP</b>	<b>f (MTBE)</b>	<b>453.80</b>	<b>26.00</b>	<b>42.00</b>	<b>27.30</b>	<b>426.50</b>	<b>220</b>	<b>1.2</b>	<b>&lt;0.50</b>	<b>&lt;0.50</b>	<b>0.50</b>	<b>61</b>	<b>3.29</b>	<b>6.94</b>
<b>MW-5</b>															
3/20/1995	--		451.40	31.50	41.00	23.20	428.20	26,000	1,300	180	890	2,900	--	--	--
6/2/1995	--		451.40	31.50	41.00	24.80	426.60	39,000	940	160	740	1,900	--	--	--
8/23/1995	--		451.40	31.50	41.00	28.10	423.30	14,000	490	74	250	890	<300	--	--
12/4/1995	--		451.40	31.50	41.00	29.83	421.57	7,600	230	13	61	80	--	--	--
2/20/1996	--		451.40	31.50	41.00	21.63	429.77	4,300	220	12	45	130	<50	--	--
5/15/1996	--		451.40	31.50	41.00	22.87	428.53	2,200	380	17	58	84	<40	--	--
8/13/1996	--		451.40	31.50	41.00	26.48	424.92	1,700	150	16	24	35	47	--	--
11/13/1996	--		451.40	31.50	41.00	29.68	421.72	850	150	11	19	37	66	--	--
3/26/1997	--		451.40	31.50	41.00	25.14	426.26	2,400	440	21	79	210	68	--	--
5/15/1997	--		451.40	31.50	41.00	27.38	424.02	3,900	510	19	140	240	48	--	--
8/26/1997	--		451.40	31.50	41.00	29.89	421.51	76	4.9	<0.5	1.5	2	9	--	--
11/5/1997	--		451.40	31.50	41.00	32.57	418.83	63	0.8	<0.5	<0.5	1.2	34	--	--
2/18/1998	--		451.40	31.50	41.00	19.99	431.41	6,200	630	70	320	640	320	--	--
5/20/1998	--		451.40	31.50	41.00	23.21	428.19	2,300	340	21	110	140	62	--	--
7/30/1998	P		451.40	31.50	41.00	26.19	425.21	<50	0.8	<0.5	0.6	0.9	<3	8.83	--
10/29/1998	NP		451.40	31.50	41.00	31.92	419.48	<50	<0.5	<0.5	<0.5	<0.5	<3	2.0	--
3/16/1999	P		451.40	31.50	41.00	25.80	425.60	1,300	170	8	59	65	120	2.0	--
5/5/1999	P		451.40	31.50	41.00	27.09	424.31	320	31	1.1	13	13	19	12.09	--
8/26/1999	P		451.40	31.50	41.00	29.67	421.73	260	13	1.7	4.2	6.3	150	1.31	--
12/3/1999	--	d	451.40	31.50	41.00	--	--	--	--	--	--	--	--	--	--
3/13/2000	P		451.40	31.50	41.00	24.51	426.89	<50	<0.5	<0.5	<0.5	<1	<3	4.41	--
6/20/2000	P		451.40	31.50	41.00	27.37	424.03	60.8	4.84	<0.500	1.9	1.59	<2.50	5.3	--
8/31/2000	P		451.40	31.50	41.00	30.21	421.19	<50.0	1.18	<0.500	<0.500	<0.500	3.83	0.97	--
2/9/2001	--		451.40	31.50	41.00	30.19	421.21	--	--	--	--	--	--	--	--
9/17/2001	P		451.40	31.50	41.00	30.71	420.69	2,700	120	10	90	77	330	0.81	--

Table 1. Summary of Ground-Water Monitoring Data: Relative Water Elevations and Laboratory Analyses

Station #771, 899 Rincon Ave., Livermore, CA

Well and Sample Date	P/NP	Comments	TOC (feet msl)	Top of Screen (ft bgs)	Bottom of Screen (ft bgs)	DTW (feet bgs)	Water Level Elevation (feet msl)	Concentrations in (µg/L)						DO (mg/L)	pH
								GRO/TPHg	Benzene	Toluene	Ethyl-Benzene	Total Xylenes	MTBE		
<b>MW-5 Cont.</b>															
1/21/2002	--		451.40	31.50	41.00	30.40	421.00	--	--	--	--	--	--	--	--
7/19/2002	P	a	451.40	31.50	41.00	31.93	419.47	1,600	170	7	120	<5.0	180	1.7	7.2
1/15/2003	--		451.40	31.50	41.00	23.12	428.28	--	--	--	--	--	--	--	--
7/9/2003	--		451.40	31.50	41.00	30.95	420.45	2,000	160	5.7	67	27	260	1.5	6.9
02/19/2004	--		451.40	31.50	41.00	26.73	424.67	--	--	--	--	--	--	--	--
08/04/2004	P		453.52	31.50	41.00	26.61	426.91	2,100	250	5.3	73	22	250	2.7	7.0
01/18/2005	--		453.52	31.50	41.00	24.10	429.42	--	--	--	--	--	--	--	--
07/15/2005	P		453.52	31.50	41.00	29.27	424.25	1,600	61	<5.0	8.7	<5.0	270	2.1	6.9
01/10/2006	--		453.52	31.50	41.00	22.19	431.33	--	--	--	--	--	--	--	--
7/21/2006	P		453.52	31.50	41.00	30.36	423.16	2,100	29	<5.0	7.5	11	14	2.98	7.1
1/17/2007	--		453.52	31.50	41.00	31.77	421.75	--	--	--	--	--	--	--	--
7/18/2007	NP		453.52	31.50	41.00	33.42	420.10	470	36	0.84	0.97	2.2	110	1.73	7.50
<b>1/15/2008</b>	<b>--</b>		<b>453.52</b>	<b>31.50</b>	<b>41.00</b>	<b>28.60</b>	<b>424.92</b>	<b>--</b>	<b>--</b>	<b>--</b>	<b>--</b>	<b>--</b>	<b>--</b>	<b>--</b>	<b>--</b>
<b>MW-6</b>															
3/20/1995	--		451.37	32.00	42.00	25.19	426.18	2,600	210	87	82	140	--	--	--
6/2/1995	--		451.37	32.00	42.00	25.75	425.62	1,600	55	7.9	40	26	--	--	--
8/23/1995	--		451.37	32.00	42.00	29.53	421.84	1,400	42	2.5	36	13	<20	--	--
12/4/1995	--		451.37	32.00	42.00	32.28	419.09	2,500	52	5.8	59	13	--	--	--
2/20/1996	--		451.37	32.00	42.00	22.27	429.10	2,500	120	16	73	12	<30	--	--
5/15/1996	--		451.37	32.00	42.00	23.86	427.51	2,000	71	6.4	47	25	<15	--	--
8/13/1996	--		451.37	32.00	42.00	28.55	422.82	3,800	91	8.2	69	25	<20	--	--
11/13/1996	--		451.37	32.00	42.00	32.04	419.33	1,900	55	3.3	55	8.5	16	--	--
3/26/1997	--		451.37	32.00	42.00	26.84	424.53	1,800	51	5	32	15	<30	--	--
5/15/1997	--		451.37	32.00	42.00	29.58	421.79	2,400	46	3	29	9	<12	--	--
8/26/1997	--		451.37	32.00	42.00	32.67	418.70	1,400	61	6	33	10	<12	--	--
11/5/1997	--		451.37	32.00	42.00	34.62	416.75	690	29	2.7	18	3.4	9	--	--
2/18/1998	--		451.37	32.00	42.00	20.09	431.28	1,800	74	5	24	12	19	--	--
5/20/1998	--		451.37	32.00	42.00	24.05	427.32	1,900	280	4	31	16	9	--	--
7/30/1998	P		451.37	32.00	42.00	28.72	422.65	2,300	110	7	36	20	<15	--	--
10/29/1998	P		451.37	32.00	42.00	32.77	418.60	2,500	14	13	17	12	<12	1.0	--

Table 1. Summary of Ground-Water Monitoring Data: Relative Water Elevations and Laboratory Analyses

Station #771, 899 Rincon Ave., Livermore, CA

Well and Sample Date	P/NP	Comments	TOC (feet msl)	Top of Screen (ft bgs)	Bottom of Screen (ft bgs)	DTW (feet bgs)	Water Level Elevation (feet msl)	Concentrations in (µg/L)						DO (mg/L)	pH
								GRO/TPHg	Benzene	Toluene	Ethyl-Benzene	Total Xylenes	MTBE		
<b>MW-6 Cont.</b>															
3/16/1999	P		451.37	32.00	42.00	26.45	424.92	1,200	65	4	27	13	18	0.5	--
5/5/1999	P		451.37	32.00	42.00	27.86	423.51	2,200	53	4	26	6	25	5.59	--
8/26/1999	P		451.37	32.00	42.00	30.49	420.88	1,100	11	6	10	4	13	2.35	--
12/3/1999	P		451.37	32.00	42.00	32.35	419.02	370	<0.5	<0.5	0.8	<1	4	2.36	--
3/13/2000	P		451.37	32.00	42.00	28.36	423.01	54	2.1	0.5	0.9	1.4	<3	4.22	--
6/20/2000	P		451.37	32.00	42.00	28.35	423.02	195	1.83	<0.500	0.528	<0.500	<2.50	3.5	--
8/31/2000	P		451.37	32.00	42.00	30.20	421.17	276	3.52	0.788	1.15	0.621	8.73	7.0	--
2/9/2001	--	b	451.37	32.00	42.00	--	--	222	4.49	2.73	0.579	0.523	57.1	--	--
2/9/2001	P		451.37	32.00	42.00	30.70	420.67	253	5.44	2.93	0.924	0.977	48.9	0.59	--
9/17/2001	--	b	451.37	32.00	42.00	--	--	<50	<0.50	<0.50	<0.50	<0.50	<2.5	--	--
9/17/2001	P		451.37	32.00	42.00	30.94	420.43	<50	<0.50	<0.50	<0.50	<0.50	<2.5	2.79	--
1/21/2002	P		451.37	32.00	42.00	30.55	420.82	<50	<0.50	<0.50	<0.50	<0.50	<5.0	1.9	--
7/19/2002	P	a	451.37	32.00	42.00	30.27	421.10	60	2	<0.50	<0.50	<0.50	<0.50	3.5	7.9
1/15/2003	--	a	451.37	32.00	42.00	22.86	428.51	83	9.1	<0.50	3.4	4.6	1	2.5	7.2
7/9/2003	P		451.37	32.00	42.00	29.41	421.96	110	<0.50	<0.50	<0.50	<0.50	0.98	2.6	7.1
02/19/2004	--		451.37	32.00	42.00	43.25	408.12	--	--	--	--	--	--	--	--
08/04/2004	P		453.83	32.00	42.00	27.71	426.12	540	36	3.8	17	24	5.2	3.5	7.1
01/18/2005	--		453.83	32.00	42.00	24.56	429.27	--	--	--	--	--	--	--	--
07/15/2005	P		453.83	32.00	42.00	27.61	426.22	4,600	210	44	150	670	32	3.5	7.1
01/10/2006	--		453.83	32.00	42.00	23.75	430.08	--	--	--	--	--	--	--	--
7/21/2006	P		453.83	32.00	42.00	27.96	425.87	260	<0.50	<0.50	<0.50	0.86	5.1	2.60	7.2
1/17/2007	--		453.83	32.00	42.00	30.57	423.26	--	--	--	--	--	--	--	--
7/18/2007	P		453.83	32.00	42.00	30.96	422.87	<50	<0.50	<0.50	<0.50	<0.50	<0.50	4.95	7.57
<b>1/15/2008</b>	<b>--</b>		<b>453.83</b>	<b>32.00</b>	<b>42.00</b>	<b>28.89</b>	<b>424.94</b>	<b>--</b>	<b>--</b>	<b>--</b>	<b>--</b>	<b>--</b>	<b>--</b>	<b>--</b>	<b>--</b>
<b>MW-7</b>															
3/20/1995	--		450.33	30.00	40.00	22.07	428.26	31,000	2,300	400	620	2,900	--	--	--
6/2/1995	--		450.33	30.00	40.00	23.42	426.91	40,000	1,400	280	610	2,400	--	--	--
8/23/1995	--		450.33	30.00	40.00	27.13	423.20	25,000	1,400	200	600	1,600	350	--	--
12/4/1995	--		450.33	30.00	40.00	29.45	420.88	23,000	1,100	74	490	720	--	--	--
2/20/1996	--		450.33	30.00	40.00	20.25	430.08	39,000	1,200	140	640	1,800	<400	--	--

**Table 1. Summary of Ground-Water Monitoring Data: Relative Water Elevations and Laboratory Analyses**  
**Station #771, 899 Rincon Ave., Livermore, CA**

Well and Sample Date	P/NP	Comments	TOC (feet msl)	Top of Screen (ft bgs)	Bottom of Screen (ft bgs)	DTW (feet bgs)	Water Level Elevation (feet msl)	Concentrations in (µg/L)						DO (mg/L)	pH
								GRO/TPHg	Benzene	Toluene	Ethyl-Benzene	Total Xylenes	MTBE		
MW-7 Cont.															
5/15/1996	--		450.33	30.00	40.00	21.38	428.95	--	--	--	--	--	--	--	--
8/13/1996	--		450.33	30.00	40.00	25.52	424.81	--	--	--	--	--	--	--	--
11/13/1996	--		450.33	30.00	40.00	29.38	420.95	--	--	--	--	--	--	--	--
3/26/1997	--		450.33	30.00	40.00	24.36	425.97	35,000	1,100	180	460	1,700	<300	--	--
5/15/1997	--		450.33	30.00	40.00	26.90	423.43	--	--	--	--	--	--	--	--
8/26/1997	--		450.33	30.00	40.00	30.21	420.12	--	--	--	--	--	--	--	--
11/5/1997	--		450.33	30.00	40.00	32.49	417.84	--	--	--	--	--	--	--	--
2/18/1998	--		450.33	30.00	40.00	18.10	432.23	19,000	1,100	120	460	1,700	240	--	--
5/20/1998	--		450.33	30.00	40.00	21.68	428.65	--	--	--	--	--	--	--	--
7/30/1998	--		450.33	30.00	40.00	26.07	424.26	--	--	--	--	--	--	--	--
10/29/1998	--		450.33	30.00	40.00	31.13	419.20	--	--	--	--	--	--	--	--
3/16/1999	P		450.33	30.00	40.00	24.45	425.88	8,600	430	51	200	680	<120	1.5	--
5/5/1999	--		450.33	30.00	40.00	25.84	424.49	--	--	--	--	--	--	--	--
8/26/1999	--		450.33	30.00	40.00	28.28	422.05	--	--	--	--	--	--	1.51	--
12/3/1999	--		450.33	30.00	40.00	31.57	418.76	--	--	--	--	--	--	--	--
3/13/2000	--	d	450.33	30.00	40.00	--	--	--	--	--	--	--	--	--	--
6/20/2000	--		450.33	30.00	40.00	25.91	424.42	--	--	--	--	--	--	5.4	--
8/31/2000	--		450.33	30.00	40.00	28.40	421.93	8,410	344	58.9	276	581	202	0.09	--
2/9/2001	--		450.33	30.00	40.00	30.04	420.29	2,030	203	12	17.9	49.4	128	1.55	--
9/17/2001	P		450.33	30.00	40.00	29.03	421.30	4,800	200	14	9.9	27	160	0.29	--
1/21/2002	--	b	450.33	30.00	40.00	--	--	2,600	280	17	41	50	97	--	--
1/21/2002	P		450.33	30.00	40.00	28.98	421.35	4,200	350	20	52	63	99	0.81	--
7/19/2002	P	a	450.33	30.00	40.00	28.70	421.63	5,700	630	31	330	160	64	0.7	7.3
1/15/2003	--	a	450.33	30.00	40.00	21.91	428.42	12,000	470	19	340	310	91	1.5	7.0
7/9/2003	P		450.33	30.00	40.00	27.88	422.45	6,700	590	23	280	92	110	1.0	6.9
02/19/2004	P	c	450.33	30.00	40.00	25.12	425.21	8,900	670	24	470	120	100	0.8	6.6
08/04/2004	P		452.70	30.00	40.00	25.92	426.78	9,100	930	29	460	130	140	0.6	7.2
01/18/2005	P		452.70	30.00	40.00	22.31	430.39	16,000	770	33	590	220	87	1.0	6.9
07/15/2005	P		452.70	30.00	40.00	27.20	425.50	12,000	1,000	38	490	220	150	1.5	6.9
01/10/2006	P		452.70	30.00	40.00	20.61	432.09	13,000	1,200	50	760	330	120	0.8	7.1
7/21/2006	P		452.70	30.00	40.00	28.10	424.60	8,000	110	<50	380	180	54	3.20	7.8

Table 1. Summary of Ground-Water Monitoring Data: Relative Water Elevations and Laboratory Analyses

Station #771, 899 Rincon Ave., Livermore, CA

Well and Sample Date	P/NP	Comments	TOC (feet msl)	Top of Screen (ft bgs)	Bottom of Screen (ft bgs)	DTW (feet bgs)	Water Level Elevation (feet msl)	Concentrations in (µg/L)						DO (mg/L)	pH
								GRO/TPHg	Benzene	Toluene	Ethyl-Benzene	Total Xylenes	MTBE		
<b>MW-7 Cont.</b>															
1/17/2007	P		452.70	30.00	40.00	29.70	423.00	5,600	16	<2.5	26	12	3.1	1.08	7.83
7/18/2007	P		452.70	30.00	40.00	29.73	422.97	2,400	140	2.8	9.1	7.3	67	4.86	7.67
1/15/2008	P		<b>452.70</b>	<b>30.00</b>	<b>40.00</b>	<b>26.18</b>	<b>426.52</b>	<b>3,500</b>	<b>120</b>	<b>3.6</b>	<b>9.0</b>	<b>29</b>	<b>26</b>	<b>3.16</b>	<b>7.07</b>
<b>MW-8</b>															
3/20/1995	--		449.43	27.50	42.50	24.75	424.68	<50	<0.5	<0.5	<0.5	<0.5	--	--	--
6/2/1995	--		449.43	27.50	42.50	24.95	424.48	--	--	--	--	--	--	--	--
8/23/1995	--		449.43	27.50	42.50	30.94	418.49	<50	<0.5	<0.5	<0.5	<0.5	<3	--	--
12/4/1995	--		449.43	27.50	42.50	31.99	417.44	--	--	--	--	--	--	--	--
2/20/1996	--		449.43	27.50	42.50	21.13	428.30	<50	<0.5	<0.5	<0.5	<0.5	<3	--	--
5/15/1996	--		449.43	27.50	42.50	21.96	427.47	--	--	--	--	--	--	--	--
8/13/1996	--		449.43	27.50	42.50	30.20	419.23	<50	<0.5	<0.5	<0.5	<0.5	<3	--	--
11/13/1996	--		449.43	27.50	42.50	33.24	416.19	--	--	--	--	--	--	--	--
3/26/1997	--		449.43	27.50	42.50	26.85	422.58	<50	<0.5	<0.5	<0.5	<0.5	<3	--	--
5/15/1997	--		449.43	27.50	42.50	29.69	419.74	--	--	--	--	--	--	--	--
8/26/1997	--		449.43	27.50	42.50	34.00	415.43	<50	<0.5	<0.5	<0.5	<0.5	<3	--	--
11/5/1997	--		449.43	27.50	42.50	35.94	413.49	--	--	--	--	--	--	--	--
2/18/1998	--		449.43	27.50	42.50	18.18	431.25	<50	0.6	0.6	<0.5	1.1	<3	--	--
5/20/1998	--		449.43	27.50	42.50	22.85	426.58	--	--	--	--	--	--	--	--
7/30/1998	NP		449.43	27.50	42.50	30.31	419.12	<50	<0.5	<0.5	<0.5	<0.5	<3	8.21	--
10/29/1998	--		449.43	27.50	42.50	35.88	413.55	--	--	--	--	--	--	--	--
3/16/1999	NP		449.43	27.50	42.50	28.50	420.93	<50	<0.5	<0.5	<0.5	<0.5	<3	1.0	--
5/5/1999	--		449.43	27.50	42.50	29.76	419.67	--	--	--	--	--	--	--	--
8/26/1999	P		449.43	27.50	42.50	33.51	415.92	<50	<0.5	<0.5	<0.5	<0.5	<3	4.93	--
12/3/1999	--		449.43	27.50	42.50	35.83	413.60	--	--	--	--	--	--	--	--
3/13/2000	P		449.43	27.50	42.50	26.12	423.31	<50	<0.5	<0.5	<0.5	<1	<3	2.81	--
6/20/2000	--		449.43	27.50	42.50	30.91	418.52	--	--	--	--	--	--	5.8	--
8/31/2000	--		449.43	27.50	42.50	33.70	415.73	--	--	--	--	--	--	--	--
2/9/2001	--		449.43	27.50	42.50	30.90	418.53	--	--	--	--	--	--	--	--
9/17/2001	--		449.43	27.50	42.50	33.95	415.48	--	--	--	--	--	--	--	--
1/21/2002	--		449.43	27.50	42.50	33.71	415.72	--	--	--	--	--	--	--	--

Table 1. Summary of Ground-Water Monitoring Data: Relative Water Elevations and Laboratory Analyses

Station #771, 899 Rincon Ave., Livermore, CA

Well and Sample Date	P/NP	Comments	TOC (feet msl)	Top of Screen (ft bgs)	Bottom of Screen (ft bgs)	DTW (feet bgs)	Water Level Elevation (feet msl)	Concentrations in (µg/L)						DO (mg/L)	pH
								GRO/TPHg	Benzene	Toluene	Ethyl-Benzene	Total Xylenes	MTBE		
<b>MW-8 Cont.</b>															
7/19/2002	--		449.43	27.50	42.50	35.30	414.13	--	--	--	--	--	--	--	--
1/15/2003	--		449.43	27.50	42.50	27.10	422.33	--	--	--	--	--	--	--	--
7/9/2003	--		449.43	27.50	42.50	33.10	416.33	--	--	--	--	--	--	--	--
02/19/2004	--		449.43	27.50	42.50	28.92	420.51	--	--	--	--	--	--	--	--
08/04/2004	--		451.80	27.50	42.50	34.28	417.52	--	--	--	--	--	--	--	--
01/18/2005	--		451.80	27.50	42.50	26.76	425.04	--	--	--	--	--	--	--	--
07/15/2005	--		451.80	27.50	42.50	31.14	420.66	--	--	--	--	--	--	--	--
01/10/2006	--		451.80	27.50	42.50	22.88	428.92	--	--	--	--	--	--	--	--
7/21/2006	--		451.80	27.50	42.50	30.84	420.96	--	--	--	--	--	--	--	--
1/17/2007	--		451.80	27.50	42.50	33.20	418.60	--	--	--	--	--	--	--	--
7/18/2007	--		451.80	27.50	42.50	31.92	419.88	--	--	--	--	--	--	--	--
<b>1/15/2008</b>	<b>--</b>		<b>451.80</b>	<b>27.50</b>	<b>42.50</b>	<b>31.52</b>	<b>420.28</b>	<b>--</b>	<b>--</b>	<b>--</b>	<b>--</b>	<b>--</b>	<b>--</b>	<b>--</b>	<b>--</b>
<b>MW-9</b>															
3/20/1995	--		449.21	29.50	39.50	19.11	430.10	<50	<0.5	<0.5	<0.5	<0.5	--	--	--
6/2/1995	--		449.21	29.50	39.50	21.23	427.98	--	--	--	--	--	--	--	--
8/23/1995	--		449.21	29.50	39.50	24.33	424.88	<50	<0.5	<0.5	<0.5	<0.5	<3	--	--
12/4/1995	--		449.21	29.50	39.50	27.90	421.31	--	--	--	--	--	--	--	--
2/20/1996	--		449.21	29.50	39.50	17.86	431.35	<50	<0.5	<0.5	<0.5	<0.5	<3	--	--
5/15/1996	--		449.21	29.50	39.50	18.69	430.52	--	--	--	--	--	--	--	--
8/13/1996	--		449.21	29.50	39.50	24.17	425.04	--	--	--	--	--	--	--	--
11/13/1996	--		449.21	29.50	39.50	28.01	421.20	--	--	--	--	--	--	--	--
3/26/1997	--		449.21	29.50	39.50	22.58	426.63	<50	<0.5	<0.5	<0.5	<0.5	<3	--	--
5/15/1997	--		449.21	29.50	39.50	25.12	424.09	--	--	--	--	--	--	--	--
8/26/1997	--		449.21	29.50	39.50	28.28	420.93	--	--	--	--	--	--	--	--
11/5/1997	--		449.21	29.50	39.50	31.18	418.03	--	--	--	--	--	--	--	--
2/18/1998	--		449.21	29.50	39.50	16.03	433.18	<50	0.6	0.5	<0.5	1	<3	--	--
5/20/1998	--		449.21	29.50	39.50	19.31	429.90	--	--	--	--	--	--	--	--
7/30/1998	--		449.21	29.50	39.50	24.90	424.31	--	--	--	--	--	--	--	--
10/29/1998	--		449.21	29.50	39.50	30.08	419.13	--	--	--	--	--	--	--	--
3/16/1999	P		449.21	29.50	39.50	22.68	426.53	<50	<0.5	<0.5	<0.5	<0.5	<3	1.0	--



Table 1. Summary of Ground-Water Monitoring Data: Relative Water Elevations and Laboratory Analyses

Station #771, 899 Rincon Ave., Livermore, CA

Well and Sample Date	P/NP	Comments	TOC (feet msl)	Top of Screen (ft bgs)	Bottom of Screen (ft bgs)	DTW (feet bgs)	Water Level Elevation (feet msl)	Concentrations in (µg/L)						DO (mg/L)	pH
								GRO/TPHg	Benzene	Toluene	Ethyl-Benzene	Total Xylenes	MTBE		
<b>MW-9 Cont.</b>															
5/5/1999	--		449.21	29.50	39.50	23.82	425.39	--	--	--	--	--	--	--	--
8/26/1999	--		449.21	29.50	39.50	26.57	422.64	--	--	--	--	--	--	5.08	--
12/3/1999	--	d	449.21	29.50	39.50	--	--	--	--	--	--	--	--	--	--
3/13/2000	P		449.21	29.50	39.50	25.62	423.59	<50	<0.5	<0.5	<0.5	<1	<3	5.43	--
6/20/2000	--		449.21	29.50	39.50	23.55	425.66	--	--	--	--	--	--	6.2	--
8/31/2000	--		449.21	29.50	39.50	27.39	421.82	--	--	--	--	--	--	--	--
2/9/2001	--		449.21	29.50	39.50	28.65	420.56	--	--	--	--	--	--	--	--
9/17/2001	--		449.21	29.50	39.50	27.51	421.70	--	--	--	--	--	--	--	--
1/21/2002	--		449.21	29.50	39.50	27.09	422.12	--	--	--	--	--	--	--	--
7/19/2002	--		449.21	29.50	39.50	27.06	422.15	--	--	--	--	--	--	--	--
1/15/2003	--		449.21	29.50	39.50	21.78	427.43	--	--	--	--	--	--	--	--
7/9/2003	--		449.21	29.50	39.50	26.18	423.03	--	--	--	--	--	--	--	--
02/19/2004	--		449.21	29.50	39.50	23.45	425.76	--	--	--	--	--	--	--	--
08/04/2004	--		451.63	29.50	39.50	29.24	422.39	--	--	--	--	--	--	--	--
01/18/2005	--		451.63	29.50	39.50	20.64	430.99	--	--	--	--	--	--	--	--
07/15/2005	--		451.63	29.50	39.50	25.72	425.91	--	--	--	--	--	--	--	--
01/10/2006	--		451.63	29.50	39.50	18.86	432.77	--	--	--	--	--	--	--	--
7/21/2006	--		451.63	29.50	39.50	25.58	426.05	--	--	--	--	--	--	--	--
1/17/2007	--		451.63	29.50	39.50	29.11	422.52	--	--	--	--	--	--	--	--
7/18/2007	--	d	451.63	29.50	39.50	--	--	--	--	--	--	--	--	--	--
<b>1/15/2008</b>	<b>--</b>		<b>451.63</b>	<b>29.50</b>	<b>39.50</b>	<b>24.89</b>	<b>426.74</b>	<b>--</b>	<b>--</b>	<b>--</b>	<b>--</b>	<b>--</b>	<b>--</b>	<b>--</b>	<b>--</b>
<b>MW-10</b>															
3/20/1995	--		449.22	29.00	37.00	20.96	428.26	--	--	--	--	--	--	--	--
6/2/1995	--		449.22	29.00	37.00	22.15	427.07	--	--	--	--	--	--	--	--
8/23/1995	--		449.22	29.00	37.00	24.47	424.75	<50	<0.5	<0.5	<0.5	<0.5	<3	--	--
12/4/1995	--		449.22	29.00	37.00	26.97	422.25	--	--	--	--	--	--	--	--
2/20/1996	--		449.22	29.00	37.00	18.40	430.82	<50	<0.5	<0.5	<0.5	<0.5	<3	--	--
5/15/1996	--	d	449.22	29.00	37.00	--	--	--	--	--	--	--	--	--	--
8/13/1996	--		449.22	29.00	37.00	23.70	425.52	--	--	--	--	--	--	--	--
11/13/1996	--		449.22	29.00	37.00	27.15	422.07	--	--	--	--	--	--	--	--

**Table 1. Summary of Ground-Water Monitoring Data: Relative Water Elevations and Laboratory Analyses**  
**Station #771, 899 Rincon Ave., Livermore, CA**

Well and Sample Date	P/NP	Comments	TOC (feet msl)	Top of Screen (ft bgs)	Bottom of Screen (ft bgs)	DTW (feet bgs)	Water Level Elevation (feet msl)	Concentrations in (µg/L)						DO (mg/L)	pH
								GRO/TPHg	Benzene	Toluene	Ethyl-Benzene	Total Xylenes	MTBE		
<b>MW-10 Cont.</b>															
3/26/1997	--		449.22	29.00	37.00	22.23	426.99	<50	<0.5	<0.5	<0.5	<0.5	<3	--	--
5/15/1997	--		449.22	29.00	37.00	24.57	424.65	--	--	--	--	--	--	--	--
8/26/1997	--		449.22	29.00	37.00	27.62	421.60	--	--	--	--	--	--	--	--
11/5/1997	--		449.22	29.00	37.00	30.79	418.43	--	--	--	--	--	--	--	--
2/18/1998	--	d	449.22	29.00	37.00	--	--	--	--	--	--	--	--	--	--
5/20/1998	--		449.22	29.00	37.00	--	--	--	--	--	--	--	--	--	--
7/30/1998	--		449.22	29.00	37.00	23.90	425.32	--	--	--	--	--	--	--	--
10/29/1998	--		449.22	29.00	37.00	30.55	418.67	--	--	--	--	--	--	--	--
3/16/1999	P		449.22	29.00	37.00	23.05	426.17	<50	<0.5	<0.5	<0.5	<0.5	<3	1.0	--
5/5/1999	--		449.22	29.00	37.00	24.00	425.22	--	--	--	--	--	--	--	--
8/26/1999	--		449.22	29.00	37.00	26.50	422.72	--	--	--	--	--	--	5.15	--
12/3/1999	--		449.22	29.00	37.00	30.80	418.42	--	--	--	--	--	--	--	--
3/13/2000	--	d	449.22	29.00	37.00	26.21	423.01	--	--	--	--	--	--	--	--
6/20/2000	--		449.22	29.00	37.00	23.52	425.70	--	--	--	--	--	--	5.5	--
8/31/2000	--		449.22	29.00	37.00	27.52	421.70	--	--	--	--	--	--	--	--
2/9/2001	--		449.22	29.00	37.00	28.71	420.51	--	--	--	--	--	--	--	--
9/17/2001	--		449.22	29.00	37.00	27.94	421.28	--	--	--	--	--	--	--	--
1/21/2002	--		449.22	29.00	37.00	27.44	421.78	--	--	--	--	--	--	--	--
7/19/2002	--		449.22	29.00	37.00	27.80	421.42	--	--	--	--	--	--	--	--
1/15/2003	--		449.22	29.00	37.00	23.09	426.13	--	--	--	--	--	--	--	--
7/9/2003	--		449.22	29.00	37.00	26.87	422.35	--	--	--	--	--	--	--	--
02/19/2004	--		449.22	29.00	37.00	23.39	425.83	--	--	--	--	--	--	--	--
01/18/2005	--		451.65	29.00	37.00	21.40	430.25	--	--	--	--	--	--	--	--
07/15/2005	--		451.65	29.00	37.00	25.37	426.28	--	--	--	--	--	--	--	--
01/10/2006	--		451.65	29.00	37.00	19.81	431.84	--	--	--	--	--	--	--	--
7/21/2006	--		451.65	29.00	37.00	25.16	426.49	--	--	--	--	--	--	--	--
1/17/2007	--		451.65	29.00	37.00	28.95	422.70	--	--	--	--	--	--	--	--
7/18/2007	--	d	451.65	29.00	37.00	--	--	--	--	--	--	--	--	--	--
<b>1/15/2008</b>	<b>--</b>		<b>451.65</b>	<b>29.00</b>	<b>37.00</b>	<b>24.62</b>	<b>427.03</b>	<b>--</b>	<b>--</b>	<b>--</b>	<b>--</b>	<b>--</b>	<b>--</b>	<b>--</b>	<b>--</b>
<b>MW-11</b>															

Table 1. Summary of Ground-Water Monitoring Data: Relative Water Elevations and Laboratory Analyses

Station #771, 899 Rincon Ave., Livermore, CA

Well and Sample Date	P/NP	Comments	TOC (feet msl)	Top of Screen (ft bgs)	Bottom of Screen (ft bgs)	DTW (feet bgs)	Water Level Elevation (feet msl)	Concentrations in (µg/L)						DO (mg/L)	pH
								GRO/TPHg	Benzene	Toluene	Ethyl-Benzene	Total Xylenes	MTBE		
MW-11 Cont.															
3/20/1995	--		448.02	29.00	39.00	25.02	423.00	<50	<0.5	<0.5	<0.5	<0.5	--	--	--
6/2/1995	--		448.02	29.00	39.00	23.82	424.20	--	--	--	--	--	--	--	--
8/23/1995	--		448.02	29.00	39.00	30.15	417.87	<50	<0.5	<0.5	<0.5	<0.5	<3	--	--
12/4/1995	--		448.02	29.00	39.00	31.63	416.39	--	--	--	--	--	--	--	--
2/20/1996	--		448.02	29.00	39.00	20.94	427.08	<50	<0.5	<0.5	<0.5	<0.5	<3	--	--
5/15/1996	--		448.02	29.00	39.00	23.03	424.99	--	--	--	--	--	--	--	--
8/13/1996	--		448.02	29.00	39.00	29.19	418.83	<50	<0.5	<0.5	<0.5	<0.5	<3	--	--
11/13/1996	--		448.02	29.00	39.00	31.96	416.06	--	--	--	--	--	--	--	--
3/26/1997	--		448.02	29.00	39.00	26.61	421.41	<50	<0.5	<0.5	<0.5	<0.5	<3	--	--
5/15/1997	--		448.02	29.00	39.00	29.39	418.63	--	--	--	--	--	--	--	--
8/26/1997	--		448.02	29.00	39.00	33.47	414.55	<50	<0.5	<0.5	<0.5	<0.5	<3	--	--
11/5/1997	--		448.02	29.00	39.00	35.12	412.90	--	--	--	--	--	--	--	--
2/18/1998	--		448.02	29.00	39.00	18.03	429.99	<50	<0.5	<0.5	<0.5	1	<3	--	--
5/20/1998	--		448.02	29.00	39.00	23.00	425.02	--	--	--	--	--	--	--	--
7/30/1998	P		448.02	29.00	39.00	29.30	418.72	<50	<0.5	<0.5	<0.5	<0.5	<3	5.59	--
10/29/1998	--		448.02	29.00	39.00	34.47	413.55	--	--	--	--	--	--	--	--
3/16/1999	P		448.02	29.00	39.00	27.88	420.14	<50	<0.5	<0.5	<0.5	<0.5	<3	1.0	--
5/5/1999	--		448.02	29.00	39.00	26.85	421.17	--	--	--	--	--	--	--	--
8/26/1999	P		448.02	29.00	39.00	32.74	415.28	<50	<0.5	<0.5	<0.5	<0.5	<3	4.59	--
12/3/1999	--		448.02	29.00	39.00	34.70	413.32	--	--	--	--	--	--	--	--
3/13/2000	P		448.02	29.00	39.00	25.94	422.08	<50	<0.5	<0.5	<0.5	<1	<3	3.21	--
6/20/2000	--		448.02	29.00	39.00	30.40	417.62	--	--	--	--	--	--	3.3	--
8/31/2000	NP		448.02	29.00	39.00	32.68	415.34	<50.0	<0.500	<0.500	<0.500	<0.500	<2.50	0.4	--
8/31/2000	--	b	448.02	29.00	39.00	--	--	<50.0	<0.500	<0.500	<0.500	<0.500	<2.50	--	--
2/9/2001	--		448.02	29.00	39.00	31.17	416.85	--	--	--	--	--	--	--	--
9/17/2001	NP		448.02	29.00	39.00	32.98	415.04	<50	<0.50	<0.50	<0.50	<0.50	<2.5	0.62	--
1/21/2002	--		448.02	29.00	39.00	31.05	416.97	--	--	--	--	--	--	--	--
7/19/2002	P		448.02	29.00	39.00	31.67	416.35	<50	<0.50	<0.50	<0.50	<0.50	<0.50	3.7	7.7
1/15/2003	--		448.02	29.00	39.00	23.75	424.27	--	--	--	--	--	--	--	--
7/9/2003	P		448.02	29.00	39.00	31.06	416.96	<50	<0.50	<0.50	<0.50	<0.50	<0.50	2.4	6.6
02/19/2004	--		448.02	29.00	39.00	27.21	420.81	--	--	--	--	--	--	--	--

**Table 1. Summary of Ground-Water Monitoring Data: Relative Water Elevations and Laboratory Analyses**  
**Station #771, 899 Rincon Ave., Livermore, CA**

Well and Sample Date	P/NP	Comments	TOC (feet msl)	Top of Screen (ft bgs)	Bottom of Screen (ft bgs)	DTW (feet bgs)	Water Level Elevation (feet msl)	Concentrations in (µg/L)						DO (mg/L)	pH
								GRO/TPHg	Benzene	Toluene	Ethyl-Benzene	Total Xylenes	MTBE		
<b>MW-11 Cont.</b>															
08/04/2004	P		450.41	29.00	39.00	31.71	418.70	<50	<0.50	<0.50	<0.50	<0.50	<0.50	3.3	7.1
01/18/2005	--		450.41	29.00	39.00	24.80	425.61	--	--	--	--	--	--	--	--
07/15/2005	P		450.41	29.00	39.00	29.15	421.26	<50	<0.50	<0.50	<0.50	<0.50	<0.50	2.7	7.1
01/10/2006	--		450.41	29.00	39.00	20.87	429.54	--	--	--	--	--	--	--	--
7/21/2006	P		450.41	29.00	39.00	29.30	421.11	<50	<0.50	<0.50	<0.50	<0.50	<0.50	2.7	7.2
1/17/2007	--		450.41	29.00	39.00	31.59	418.82	--	--	--	--	--	--	--	--
7/18/2007	NP		450.41	29.00	39.00	29.22	421.19	<50	<0.50	<0.50	<0.50	<0.50	<0.50	5.35	7.12
1/15/2008	--		<b>450.41</b>	<b>29.00</b>	<b>39.00</b>	<b>29.12</b>	<b>421.29</b>	--	--	--	--	--	--	--	--
<b>RW-1</b>															
3/20/1995	--		451.67	25.50	40.50	23.76	427.91	15,000	1,000	140	310	950	--	--	--
6/2/1995	--		451.67	25.50	40.50	25.12	426.55	12,000	1,300	280	420	1,100	--	--	--
8/23/1995	--		451.67	25.50	40.50	28.80	422.87	8,200	520	190	240	610	<50	--	--
12/4/1995	--		451.67	25.50	40.50	31.15	420.52	2,600	140	59	83	210	--	--	--
2/20/1996	--		451.67	25.50	40.50	21.45	430.22	6,300	410	160	180	650	<40	--	--
5/15/1996	--		451.67	25.50	40.50	22.97	428.70	--	--	--	--	--	--	--	--
8/13/1996	--		451.67	25.50	40.50	24.74	426.93	--	--	--	--	--	--	--	--
11/13/1996	--		451.67	25.50	40.50	30.69	420.98	--	--	--	--	--	--	--	--
3/26/1997	--		451.67	25.50	40.50	25.69	425.98	500	57	3	6.4	18	54	--	--
5/15/1997	--		451.67	25.50	40.50	28.19	423.48	--	--	--	--	--	--	--	--
8/26/1997	--		451.67	25.50	40.50	31.21	420.46	--	--	--	--	--	--	--	--
11/5/1997	--		451.67	25.50	40.50	33.67	418.00	--	--	--	--	--	--	--	--
2/18/1998	--		451.67	25.50	40.50	20.14	431.53	9,400	200	70	190	710	<60	--	--
5/20/1998	--		451.67	25.50	40.50	23.43	428.24	--	--	--	--	--	--	--	--
7/30/1998	--		451.67	25.50	40.50	27.42	424.25	--	--	--	--	--	--	--	--
10/29/1998	--		451.67	25.50	40.50	32.47	419.20	--	--	--	--	--	--	--	--
3/16/1999	NP		451.67	25.50	40.50	25.45	426.22	1,100	140	19	45	83	530	1.0	--
5/5/1999	--		451.67	25.50	40.50	27.23	424.44	--	--	--	--	--	--	--	--
8/26/1999	--		451.67	25.50	40.50	29.98	421.69	--	--	--	--	--	--	1.39	--
12/3/1999	--		451.67	25.50	40.50	32.38	419.29	--	--	--	--	--	--	--	--
3/13/2000	NP		451.67	25.50	40.50	25.53	426.14	1,100	130	3.5	0.7	95	230	4.43	--

Table 1. Summary of Ground-Water Monitoring Data: Relative Water Elevations and Laboratory Analyses

Station #771, 899 Rincon Ave., Livermore, CA

Well and Sample Date	P/NP	Comments	TOC (feet msl)	Top of Screen (ft bgs)	Bottom of Screen (ft bgs)	DTW (feet bgs)	Water Level Elevation (feet msl)	Concentrations in (µg/L)						DO (mg/L)	pH
								GRO/TPHg	Benzene	Toluene	Ethyl-Benzene	Total Xylenes	MTBE		
<b>RW-1 Cont.</b>															
6/20/2000	--		451.67	25.50	40.50	28.31	423.36	--	--	--	--	--	--	1.9	--
8/31/2000	NP		451.67	25.50	40.50	30.61	421.06	<50.0	<0.500	<0.500	<0.500	<0.500	82.5	3.21	--
2/9/2001	NP		451.67	25.50	40.50	31.14	420.53	<50.0	<0.500	<0.500	<0.500	<0.500	<2.50	0.84	--
9/17/2001	NP		451.67	25.50	40.50	31.70	419.97	<50	<0.50	<0.50	<0.50	<0.50	<2.5	1.51	--
1/21/2002	NP		451.67	25.50	40.50	30.15	421.52	<50	7.7	<0.50	<0.50	1.5	18	0.63	--
7/19/2002	NP		451.67	25.50	40.50	31.15	420.52	<50	<0.50	<0.50	<0.50	<0.50	13	1.4	6.6
1/15/2003	--	a	451.67	25.50	40.50	22.20	429.47	860	9	1.6	17	42	1.5	2.8	7.2
7/9/2003	--		451.67	25.50	40.50	29.56	422.11	<50	<0.50	<0.50	<0.50	<0.50	<0.50	1.8	7.1
02/19/2004	NP	c	451.67	25.50	40.50	23.53	428.14	<50	<0.50	<0.50	<0.50	<0.50	<0.50	2.4	6.7
08/04/2004	P		454.11	25.50	40.50	22.45	431.66	600	<0.50	<0.50	3.3	3.4	<0.50	4.4	7.2
01/18/2005	P		454.11	25.50	40.50	23.57	430.54	1,400	8.0	1.9	22	68	<0.50	3.6	6.9
07/15/2005	NP		454.11	25.50	40.50	29.02	425.09	<50	<0.50	<0.50	<0.50	<0.50	2.0	1.1	7.8
01/10/2006	P		454.11	25.50	40.50	21.88	432.23	480	4.3	0.67	8.3	18	0.54	4.4	7.1
7/21/2006	--	d	454.11	25.50	40.50	--	--	--	--	--	--	--	--	--	--
1/17/2007	P		454.11	25.50	40.50	31.48	422.63	6,900	17	2.8	22	31	2.6	4.08	7.74
7/18/2007	NP		454.11	25.50	40.50	32.45	421.66	<50	<0.50	<0.50	<0.50	<0.50	<0.50	1.33	7.48
<b>1/15/2008</b>	<b>NP</b>		<b>454.11</b>	<b>25.50</b>	<b>40.50</b>	<b>28.39</b>	<b>425.72</b>	<b>&lt;50</b>	<b>&lt;0.50</b>	<b>&lt;0.50</b>	<b>&lt;0.50</b>	<b>&lt;0.50</b>	<b>8.3</b>	<b>2.73</b>	<b>6.87</b>
<b>VW-1</b>															
8/31/2000	P		--	18.50	28.50	20.61	--	<50.0	<0.500	<0.500	<0.500	<0.500	<2.50	10.08	--
2/9/2001	P		--	18.50	28.50	22.10	--	<50.0	<0.500	<0.500	<0.500	<0.500	<2.50	0.53	--
9/17/2001	P		--	18.50	28.50	21.99	--	<50	<0.50	<0.50	<0.50	<0.50	<2.5	6.59	--
1/21/2002	P		--	18.50	28.50	21.50	--	<50	<0.50	<0.50	<0.50	<0.50	<5.0	0.7	--
7/19/2002	P		--	18.50	28.50	22.42	--	<50	<0.50	<0.50	<0.50	<0.50	<0.50	4.9	7.1
1/15/2003	--		--	18.50	28.50	22.59	--	<50	<0.50	<0.50	0.63	1.7	<0.50	5.4	7.2
7/9/2003	--		--	18.50	28.50	22.50	--	<50	<0.50	<0.50	<0.50	0.61	<0.50	2.0	7.0
02/19/2004	--		--	18.50	28.50	21.04	--	--	--	--	--	--	--	--	--
08/04/2004	P		453.29	18.50	28.50	20.48	432.81	<50	<0.50	<0.50	<0.50	<0.50	<0.50	5.7	7.0
01/18/2005	--		453.29	18.50	28.50	21.72	431.57	--	--	--	--	--	--	--	--
07/15/2005	P		453.29	18.50	28.50	22.50	430.79	<50	<0.50	<0.50	<0.50	<0.50	<0.50	5.1	7.4
01/10/2006	--		453.29	18.50	28.50	20.17	433.12	--	--	--	--	--	--	--	--

**Table 1. Summary of Ground-Water Monitoring Data: Relative Water Elevations and Laboratory Analyses  
Station #771, 899 Rincon Ave., Livermore, CA**

Well and Sample Date	P/NP	Comments	TOC (feet msl)	Top of Screen (ft bgs)	Bottom of Screen (ft bgs)	DTW (feet bgs)	Water Level Elevation (feet msl)	Concentrations in (µg/L)						DO (mg/L)	pH
								GRO/ TPHg	Benzene	Toluene	Ethyl- Benzene	Total Xylenes	MTBE		
VW-1 Cont.															
7/21/2006	P	e	453.29	18.50	28.50	22.50	430.79	220	<0.50	<0.50	<0.50	<0.50	<0.50	5.91	7.3
1/17/2007	--		453.29	18.50	28.50	21.67	431.62	--	--	--	--	--	--	--	--
7/18/2007	NP		453.29	18.50	28.50	23.58	429.71	<50	<0.50	<0.50	<0.50	<0.50	<0.50	6.45	8.52
1/15/2008	--		453.29	18.50	28.50	21.87	431.42	--	--	--	--	--	--	--	--

**SYMBOLS AND ABBREVIATIONS:**

--/- - = Not analyzed/applicable/sampled/measured  
< = Not detected at or above specified laboratory reporting limit  
DO = Dissolved oxygen  
DTW = Depth to water in ft bgs  
ft bgs = Feet below ground surface  
ft MSL = Feet above mean sea level  
GRO = Gasoline range organics, range C4-C12  
GWE = Groundwater elevation in ft MSL  
g/L = Micrograms per liter  
mg/L = Milligrams per liter  
MTBE = Methyl tert-butyl ether  
NP = Not purged before sampling  
P = Purged before sampling  
TPH-g = Total petroleum hydrocarbons as gasoline  
TOC = Top of casing elevation in ft MSL

**FOOTNOTES:**

a = Chromatogram Pattern: Gasoline C6-C10  
b = Duplicate sample  
c = GRO analyzed by EPA Method 8015B modified  
d = Well inaccessible  
e = Hydrocarbon result partly due to individ. peak(s) in quant. range.  
f = Sample > 4x spike concentration.

**NOTES:**

For previous historical GWE and analytical data please refer to Fourth Quarter 1995 Groundwater Monitoring Program Results and Remediation System Performance Evaluation Report, ARCO Service Station 771, Livermore, California, (EMCON, March 1, 1996).

Please note that beginning in the fourth quarter 2003, the laboratory modified the reported analyte list. TPH-g was changed to GRO. The resulting data may be impacted by the potential inclusion of non-TPH-g analytes within the requested fuel range resulting in a higher concentration being reported.

All analytes unless otherwise notes utilized EPA Method 8260B, EPA method 8015B modified prior to 1/15/03, and EPA method 8020 prior to 12/03/99.

Site wells were resurveyed to NAVD '88 datum on March 8, 2004.

Top of screen and bottom of screen depths for MW-3 and MW-6 are estimated from cross-sections.

Note: The data within this table collected prior to April 2006 was provided to Broadbent & Associates, Inc. by Atlantic Richfield Company and their previous consultants. Broadbent & Associates, Inc. has not verified the accuracy of this information.

**Table 2. Summary of Fuel Additives Analytical Data**  
**Station #771, 899 Rincon Ave., Livermore, CA**

Well and Sample Date	Concentrations in (µg/L)								Comments
	Ethanol	TBA	MTBE	DIPE	ETBE	TAME	1,2-DCA	EDB	
<b>MW-1</b>									
02/19/2004	--	--	--	--	--	--	--	--	
08/04/2004	--	--	--	--	--	--	--	--	
01/18/2005	--	--	--	--	--	--	--	--	
07/15/2005	--	--	--	--	--	--	--	--	
01/10/2006	--	--	--	--	--	--	--	--	
<b>MW-2</b>									
7/9/2003	<1,000	<200	39	<5.0	<5.0	<5.0	<5.0	<5.0	
02/19/2004	--	--	--	--	--	--	--	--	
08/04/2004	<2,000	<400	78	<10	<10	<10	<10	<10	
01/18/2005	--	--	--	--	--	--	--	--	
07/15/2005	<500	120	46	<2.5	<2.5	<2.5	<2.5	<2.5	
01/10/2006	--	--	--	--	--	--	--	--	
7/21/2006	<300	<20	<0.50	<0.50	<0.50	<0.50	<0.50	<0.50	
7/18/2007	<600	89	45	<1.0	<1.0	<1.0	<1.0	<1.0	
<b>MW-3</b>									
02/19/2004	--	--	--	--	--	--	--	--	
08/04/2004	--	--	--	--	--	--	--	--	
01/18/2005	--	--	--	--	--	--	--	--	
07/15/2005	--	--	--	--	--	--	--	--	
01/10/2006	--	--	--	--	--	--	--	--	
<b>MW-4</b>									
7/9/2003	<1,000	750	150	<5.0	<5.0	<5.0	<5.0	<5.0	
02/19/2004	<1,000	630	180	<10	<10	<10	<5.0	<5.0	
08/04/2004	<2,000	1,300	300	<10	<10	<10	<10	<10	
01/18/2005	<1,000	630	160	<5.0	<5.0	<5.0	<5.0	<5.0	a
07/15/2005	<1,000	850	230	<5.0	<5.0	<5.0	<5.0	<5.0	
01/10/2006	<1,500	810	190	<2.5	<2.5	<2.5	<2.5	<2.5	
7/21/2006	<300	35	3.1	<0.50	<0.50	<0.50	<0.50	<0.50	
1/17/2007	<300	<20	11	<0.50	<0.50	<0.50	<0.50	<0.50	
7/18/2007	<300	830	74	<0.50	<0.50	<0.50	0.76	<0.50	



Table 2. Summary of Fuel Additives Analytical Data  
Station #771, 899 Rincon Ave., Livermore, CA

Well and Sample Date	Concentrations in (µg/L)										Comments	
	Ethanol	TBA	MTBE	DIPE	ETBE	TAME	1,2-DCA	EDB				
<b>MW-4 Cont.</b>												
1/15/2008	<300	280	61	<0.50	<0.50	<0.50	<0.50	<0.50	<0.50	<0.50	<0.50	b (MTBE)
<b>MW-5</b>												
7/9/2003	<1,000	1,100	260	<5.0	<5.0	<5.0	<5.0	<5.0	<5.0	<5.0	<5.0	
02/19/2004	--	--	--	--	--	--	--	--	--	--	--	
08/04/2004	<1,000	850	250	<5.0	<5.0	<5.0	<5.0	<5.0	<5.0	<5.0	<5.0	
01/18/2005	--	--	--	--	--	--	--	--	--	--	--	
07/15/2005	<1,000	720	270	<5.0	<5.0	<5.0	<5.0	<5.0	<5.0	<5.0	<5.0	
01/10/2006	--	--	--	--	--	--	--	--	--	--	--	
7/21/2006	<3,000	<200	14	<5.0	<5.0	<5.0	<5.0	<5.0	<5.0	<5.0	<5.0	
7/18/2007	<300	260	110	<0.50	<0.50	<0.50	<0.50	<0.50	<0.50	<0.50	<0.50	
<b>MW-6</b>												
7/9/2003	<100	<20	0.98	<0.50	<0.50	<0.50	<0.50	<0.50	<0.50	<0.50	<0.50	
02/19/2004	--	--	--	--	--	--	--	--	--	--	--	
08/04/2004	<100	<20	5.2	<0.50	<0.50	<0.50	<0.50	<0.50	<0.50	<0.50	<0.50	
01/18/2005	--	--	--	--	--	--	--	--	--	--	--	
07/15/2005	<500	110	32	<2.5	<2.5	<2.5	<2.5	<2.5	<2.5	<2.5	<2.5	
01/10/2006	--	--	--	--	--	--	--	--	--	--	--	
7/21/2006	<300	<20	5.1	<0.50	<0.50	<0.50	<0.50	<0.50	<0.50	<0.50	<0.50	
7/18/2007	<300	<20	<0.50	<0.50	<0.50	<0.50	<0.50	<0.50	<0.50	<0.50	<0.50	
<b>MW-7</b>												
7/9/2003	<1,000	350	110	<5.0	<5.0	<5.0	<5.0	<5.0	<5.0	<5.0	<5.0	
02/19/2004	<1,000	420	100	<10	<10	<10	<10	<10	<10	<10	<10	
08/04/2004	<5,000	<1,000	140	<2.5	<2.5	<2.5	<2.5	<2.5	<2.5	<2.5	<2.5	
01/18/2005	<1,000	260	87	<5.0	<5.0	<5.0	<5.0	<5.0	<5.0	<5.0	<5.0	a
07/15/2005	<5,000	<1,000	150	<2.5	<2.5	<2.5	<2.5	<2.5	<2.5	<2.5	<2.5	
01/10/2006	<30,000	<2,000	120	<5.0	<5.0	<5.0	<5.0	<5.0	<5.0	<5.0	<5.0	
7/21/2006	<30,000	<2,000	54	<5.0	<5.0	<5.0	<5.0	<5.0	<5.0	<5.0	<5.0	
1/17/2007	<1,500	<100	3.1	<2.5	<2.5	<2.5	<2.5	<2.5	<2.5	<2.5	<2.5	
7/18/2007	<600	220	67	<1.0	<1.0	<1.0	<1.0	<1.0	<1.0	<1.0	<1.0	
1/15/2008	<1,500	<100	26	<2.5	<2.5	<2.5	<2.5	<2.5	<2.5	<2.5	<2.5	

**Table 2. Summary of Fuel Additives Analytical Data**  
**Station #771, 899 Rincon Ave., Livermore, CA**

Well and Sample Date	Concentrations in (µg/L)								Comments
	Ethanol	TBA	MTBE	DIPE	ETBE	TAME	1,2-DCA	EDB	
<b>MW-8</b>									
02/19/2004	--	--	--	--	--	--	--	--	
08/04/2004	--	--	--	--	--	--	--	--	
01/18/2005	--	--	--	--	--	--	--	--	
07/15/2005	--	--	--	--	--	--	--	--	
01/10/2006	--	--	--	--	--	--	--	--	
<b>MW-9</b>									
02/19/2004	--	--	--	--	--	--	--	--	
08/04/2004	--	--	--	--	--	--	--	--	
01/18/2005	--	--	--	--	--	--	--	--	
07/15/2005	--	--	--	--	--	--	--	--	
01/10/2006	--	--	--	--	--	--	--	--	
<b>MW-10</b>									
02/19/2004	--	--	--	--	--	--	--	--	
01/18/2005	--	--	--	--	--	--	--	--	
07/15/2005	--	--	--	--	--	--	--	--	
01/10/2006	--	--	--	--	--	--	--	--	
<b>MW-11</b>									
7/9/2003	<100	<20	<0.50	<0.50	<0.50	<0.50	<0.50	<0.50	
02/19/2004	--	--	--	--	--	--	--	--	
08/04/2004	<100	<20	<0.50	<0.50	<0.50	<0.50	<0.50	<0.50	
01/18/2005	--	--	--	--	--	--	--	--	
07/15/2005	<100	<20	<0.50	<0.50	<0.50	<0.50	<0.50	<0.50	
01/10/2006	--	--	--	--	--	--	--	--	
7/21/2006	<300	<20	<0.50	<0.50	<0.50	<0.50	<0.50	<0.50	
7/18/2007	<300	<20	<0.50	<0.50	<0.50	<0.50	<0.50	<0.50	
<b>RW-1</b>									
7/9/2003	<100	<20	<0.50	<0.50	<0.50	<0.50	<0.50	<0.50	
02/19/2004	<100	<20	<0.50	<1.0	<1.0	<1.0	<0.50	<0.50	
08/04/2004	<100	<20	<0.50	<0.50	<0.50	<0.50	<0.50	<0.50	

**Table 2. Summary of Fuel Additives Analytical Data  
Station #771, 899 Rincon Ave., Livermore, CA**

Well and Sample Date	Concentrations in (µg/L)								Comments
	Ethanol	TBA	MTBE	DIPE	ETBE	TAME	1,2-DCA	EDB	
<b>RW-1 Cont.</b>									
01/18/2005	<100	<20	<0.50	<0.50	<0.50	<0.50	<0.50	<0.50	a
07/15/2005	<100	<20	2.0	<0.50	<0.50	<0.50	<0.50	<0.50	
01/10/2006	<300	<20	0.54	<0.50	<0.50	<0.50	<0.50	<0.50	
1/17/2007	<1,500	<100	2.6	<2.5	<2.5	<2.5	<2.5	<2.5	
7/18/2007	<300	<20	<0.50	<0.50	<0.50	<0.50	<0.50	<0.50	
<b>1/15/2008</b>	<b>&lt;300</b>	<b>&lt;20</b>	<b>8.3</b>	<b>&lt;0.50</b>	<b>&lt;0.50</b>	<b>&lt;0.50</b>	<b>&lt;0.50</b>	<b>&lt;0.50</b>	
<b>VW-1</b>									
7/9/2003	<100	<20	<0.50	<0.50	<0.50	<0.50	<0.50	<0.50	
02/19/2004	--	--	--	--	--	--	--	--	
08/04/2004	<100	<20	<0.50	<0.50	<0.50	<0.50	<0.50	<0.50	
01/18/2005	--	--	--	--	--	--	--	--	
07/15/2005	<100	<20	<0.50	<0.50	<0.50	<0.50	<0.50	<0.50	
01/10/2006	--	--	--	--	--	--	--	--	
7/21/2006	<300	<20	<0.50	<0.50	<0.50	<0.50	<0.50	<0.50	
7/18/2007	<300	<20	<0.50	<0.50	<0.50	<0.50	<0.50	<0.50	

SYMBOLS AND ABBREVIATIONS:

< = Not detected at or above specified laboratory reporting limit

1,2-DCA = 1,2-Dichloroethane

DIPE = Di-isopropyl ether

EDB = 1,2-Dibromoethane

ETBE = Ethyl tert-butyl ether

MTBE = Methyl tert-butyl ether

µg/L = Micrograms per liter

TAME = tert-Amyl methyl ether

TBA = tert-Butyl alcohol

FOOTNOTES:

a = Calibration verification was within the method limits but outside the contract limits for ethanol.

b = Sample >4x spike concentration.

Note: The data within this table collected prior to April 2006 was provided to Broadbent & Associates, Inc. by Atlantic Richfield Company and their previous consultants. Broadbent & Associates, Inc. has not verified the accuracy of this information.

**Table 3. Historical Ground-Water Flow Direction and Gradient**  
**Station #771, 899 Rincon Ave., Livermore, CA**

<b>Date Sampled</b>	<b>Approximate Flow Direction</b>	<b>Approximate Hydraulic Gradient</b>
3/20/1995	Northwest	0.030
6/2/1995	North-Northwest	0.014
8/23/1995	North-Northwest	0.030
12/4/1995	North-Northwest	0.030
2/20/1996	Northwest	0.016
5/15/1996	Northwest	0.024
8/13/1996	North-Northwest	0.030
11/13/1996	North-Northwest	0.031
3/26/1997	North-Northwest	0.044
5/15/1997	North-Northwest	0.031
8/26/1997	North-Northwest	0.042
11/5/1997	North-Northwest	0.030
2/18/1998	Northwest	0.010
5/20/1998	Northwest	0.030
7/30/1998	North	0.040
10/29/1998	North	0.005
3/16/1999	North-Northwest	0.030
5/5/1999	North	0.040
8/26/1999	North-Northwest	0.050
12/3/1999	North-Northeast	0.060
3/13/2000	North-Northwest	0.066
6/20/2000	North-Northwest	0.050
8/31/2000	North-Northwest	0.062
2/9/2001	North-Northeast	0.014
9/17/2001	North-Northwest	0.061
1/21/2002	North-Northwest	0.050
7/19/2002	North-Northwest	0.044
1/15/2003	Northeast to Southeast	0.038 - 0.016
7/9/2003	Northwest to North-Northwest	0.009 - 0.063
2/19/2004	North	0.044
8/4/2004	Northeast	0.071
1/18/2005	North-Northeast	0.04
7/15/2005	Northeast and Southwest	0.05 and 0.02
1/10/2006	North	0.02
7/21/2006	North and Southwest	0.05 and 0.02
1/17/2007	North-Northeast and Southwest	0.03 and 0.02
7/18/2007	North-Northeast to Southwest	0.03 and 0.04
1/15/2008	North	0.04

Note: The data within this table collected prior to April 2006 was provided to Broadbent & Associates, Inc. by Atlantic Richfield Company and their previous consultants. Broadbent & Associates, Inc. has not verified the accuracy of this information.

**APPENDIX A**

STRATUS ENVIRONMENTAL, INC. GROUND-WATER SAMPLING DATA PACKAGE  
(INCLUDES, FIELD DATA SHEETS, NON-HAZARDOUS WASTE DATA  
FORM, AND CERTIFIED LABORATORY ANALYTICAL RESULTS AND  
CHAIN OF CUSTODY DOCUMENTATION)



3330 Cameron Park Drive, Ste 550  
Cameron Park, California 95682  
(530) 676-6004 ~ Fax: (530) 676-6005

January 31, 2008

Mr. Rob Miller  
Broadbent & Associates  
2000 Kirman Ave.  
Reno, NV 89502

Re: Groundwater Sampling Data Package, BP Service Station No. 771, located at 899 Rincon Avenue, Livermore, California

### **General Information**

*Data Submittal Prepared / Reviewed by:* Sandy Hayes / Jay Johnson

*Phone Number:* (530) 676-6000

*On-Site Supplier Representatives:* Greg Wilkins

*Sampling Date:* January 15, 2008

*Arrival:* 04:45                      *Departure:* 07:50

*Weather Conditions:* Not noted.

*Unusual Field Conditions:* Clear

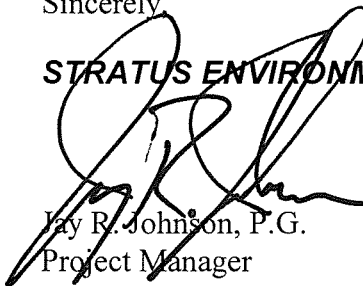
*Scope of Work Performed:* Quarterly monitoring and sampling

*Variations from Work Scope:* None.

This submittal presents the tabulation of data collected in association with routine groundwater monitoring. The attachments include field data sheets, non-hazardous waste data form, chain of custody documentation and certified analytical results. The information is being provided to BP-ARCO's Scoping Supplier for use in preparing a report for regulatory submittal. This submittal is limited to presentation of collected data and does not include data interpretation or conclusions or recommendations. Any questions concerning this submittal should be addressed to the Preparer/Reviewer identified above.

Sincerely,

**STRATUS ENVIRONMENTAL, INC.**



Jay R. Johnson, P.G.  
Project Manager

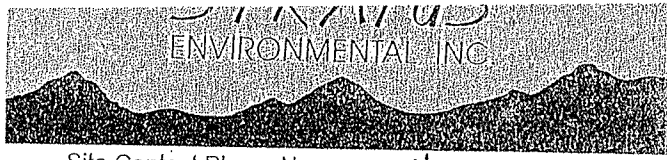


**Attachments:**

- Field Data Sheets
- Non-Hazardous Waste Data Form
- Chain of Custody Documentation
- Certified Analytical Results

cc: Mr. Paul Supple, BP/ARCO





Site Address: 899 Riven Ave  
 City Livermore CA  
 Sampled By G. Wilkins

ORIGINAL

Site Number: ARCO 771  
 Project No. E771-09  
 Project PM Jay Johnson  
 Date Sampled 01-15-08

Site Contact Phone No. on site 0445 off 0750

Water Level Data					Purge Volume Calculations					Well Purge Method				Sample Record			Field Data
Well ID	Time	Depth to water feet	Top of Screen feet	Total Depth of Well feet	Casing Water Column (A)	Well Diameter (inches)	Multiplier Value (B)	Three Casing Volumes (gallons)	Actual Water Purged (gallons)	No Purge	Bailer	Pump	Other	DTW At Sample Time	Sample I.D.	Sample Time	Dissolved Oxygen (mg/L)
MW-1	0603	28.76		36.54						X							
MW-2	0523	24.65		34.04						X							
MW-3	0528	27.65		39.49						X							
MW-4	0554	27.30	26.00	41.12	Below Screen	4	2	N/A	N/A	X				27.30	MW-4	0735	3.29
MW-5	0559	28.60		40.06						X							
MW-6	0500	28.89		43.06						X							
MW-7	0542	26.18	30.00	39.50	13.32	4	2	26.62	27		X			34.39	MW-7	0715	3.16
MW-8	0547	31.52		41.32						X							
MW-9	0517	24.89		38.87						X							
MW-10	0512	24.62		33.96						X							
MW-11	0506	29.12		38.43						X							
RW-1	0611	28.39	25.50	39.48	Below screen	6	4.4	N/A	N/A	X				28.39	RW-1	0633	2.73
VW-1	0532	21.87		28.03						X							
TB27101152008																0625	

\*60045

(A) Casing water Column  
 Depth wrt. Depth to Bottom

Multiplier Values  
 2"=0.5 4"=2.0 6"=4.4



ORIGINAL

Well ID <u>MW-4</u> <u>0735</u>					Well ID <u>MW-7</u> <u>0715</u>				
purge start time <u>Bailor</u> <u>Odor</u>					purge start time <u>Bailor</u> <u><del>Odor</del></u>				
	Temp C	pH	cond	gallons		Temp C	pH	cond	gallons
time	<u>19.7</u>	<u>6.94</u>	<u>665</u>	<u>0</u>	time	<u>19.1</u>	<u>7.48</u>	<u>704</u>	<u>0</u>
time					time	<u>20.0</u>	<u>7.01</u>	<u>722</u>	<u>14</u>
time					time	<u>19.0</u>	<u>7.07</u>	<u>668</u>	<u>27</u>
time	<u>No Purge</u>				time				
purge stop time <u>Below Screen</u>					purge stop time				
Well ID <u>RW-1</u> <u>0633</u>					Well ID				
purge start time <u>Bailor</u> <u>No Odor</u>					purge start time				
	Temp C	pH	cond	gallons		Temp C	pH	cond	gallons
time	<u>18.8</u>	<u>6.87</u>	<u>683</u>	<u>0</u>	time				
time					time				
time					time				
time	<u>No Purge</u>				time				
purge stop time <u>Below Screen</u>					purge stop time				
Well ID					Well ID				
purge start time					purge start time				
	Temp C	pH	cond	gallons		Temp C	pH	cond	gallons
time					time				
time					time				
time					time				
time					time				
purge stop time					purge stop time				
Well ID					Well ID				
purge start time					purge start time				
	Temp C	pH	cond	gallons		Temp C	pH	cond	gallons
time					time				
time					time				
time					time				
time					time				
purge stop time					purge stop time				

NO. 668603

# NON-HAZARDOUS WASTE DATA FORM

SITE:

EPA I.D. NO.

NOT REQUIRED

NAME BP WEST COAST PRODUCTS LLC ARCO # 771

ADDRESS P.O. BOX 80249 899 Rincon Ave  
RANCHO SANTA MARGARITA Livermore CA

PROFILE NO.

CITY, STATE, ZIP CA 92589

PHONE NO. ( )

CONTAINERS: No. \_\_\_\_\_ VOLUME 28 gal WEIGHT \_\_\_\_\_

TYPE:  TANK TRUCK  DUMP TRUCK  DRUMS  CARTONS  OTHER \_\_\_\_\_

WASTE DESCRIPTION NON-HAZARDOUS WATER GENERATING PROCESS WELL PURGING/DECON WATER  
COMPONENTS OF WASTE PPM % COMPONENTS OF WASTE PPM %

1. WATER 99-100% 5. \_\_\_\_\_

2. TDS <1% 6. \_\_\_\_\_

3. \_\_\_\_\_ 7. BEST#

4. \_\_\_\_\_ 8. \_\_\_\_\_

PROPERTIES: 7-10 pH  SOLID  LIQUID  SLUDGE  SLURRY  OTHER \_\_\_\_\_

HANDLING INSTRUCTIONS: WEAR ALL APPROPRIATE PROTECTIVE CLOTHING

THE GENERATOR CERTIFIES THAT THE WASTE AS DESCRIBED IS 100% NON-HAZARDOUS.

Larry Moothart BEST for BP  
TYPED OR PRINTED FULL NAME & SIGNATURE

01-15-08  
DATE

TO BE COMPLETED BY GENERATOR

TRANSPORTER

NAME Transporter #1 STRATUS ENVIRONMENTAL Transporter #2

EPA I.D. NO.

ADDRESS 3330 CAMERON PARK DR

SERVICE ORDER NO. \_\_\_\_\_

CITY, STATE, ZIP CAMERON PARK, CA 93582

PICK UP DATE \_\_\_\_\_

PHONE NO. 330-676-2031

G. Williams  
TYPED OR PRINTED FULL NAME & SIGNATURE

01-15-08  
DATE

TRUCK, UNIT, I.D. NO. \_\_\_\_\_

TSD FACILITY

NAME INSTRAT, INC

EPA I.D. NO.

DISPOSAL METHOD

ADDRESS 1105 AIRPORT RD #C

LANDFILL  OTHER \_\_\_\_\_

CITY, STATE, ZIP RIO VISTA, CA 94571

PHONE NO. 530-753-1629

TYPED OR PRINTED FULL NAME & SIGNATURE

DATE

GEN	OLD/NEW	L	A	TONS
TRANS		S	B	
C/Q		RT/CD	HWDF	NONE

DISCREPANCY





bp  
A BP affiliated company

ORIGINAL

Chain of Custody Record

Project Name: ARCO 771  
 BP BU/AR Region/Enfos Segment: BP > Americas > West > Retail > Alameda > 771  
 State or Lead Regulatory Agency: \_\_\_\_\_  
 Requested Due Date (mm/dd/yy): Std TAT

On-site Time: <u>0445</u>	Temp: <u>20's</u>
Off-site Time: <u>0750</u>	Temp: <u>30's</u>
Sky Conditions: <u>unknown</u>	
Meteorological Events: <u>Fog</u>	
Wind Speed: <u>---</u>	Direction: <u>---</u>

Lab Name: <u>TestAmerica</u>	BP/AR Facility No.: <u>771</u>	Consultant/Contractor: <u>Stratus Environmental, Inc.</u>
Address: <u>885 Jarvis Drive</u>	BP/AR Facility Address: <u>899 Rincon Ave., Livermore</u>	Address: <u>3330 Cameron Park Drive, Suite 550</u>
<u>Morgan Hill, CA 95937</u>	Site Lat/Long: _____	<u>Cameron Park, CA 95682</u>
Lab PM: <u>Lisa Race</u>	California Global ID No.: <u>T0600100113</u>	Consultant/Contractor Project No.: _____
Tele/Fax: <u>408-782-8156 408-782-6308 (fax)</u>	Enfos Project No.: _____	Consultant/Contractor PM: <u>Jay Johnson</u>
BP/AR PM Contact: <u>Paul Supple</u>	Provision or OOC (circle one) <u>Provision</u>	Tele/Fax: <u>(530) 676-6000 / (530) 676-6005</u>
Address: <u>2010 Crow Canyon Place, Suite 150</u>	Phase/WBS: <u>04-Monitoring</u>	Report Type & QC Level: <u>Level 1 with EDF</u>
<u>San Ramon, CA</u>	Sub Phase/Task: <u>03-Analytical</u>	E-mail EDD To: <u>cjewitt@stratusinc.net</u>
Tele/Fax: <u>925-275-3506</u>	Cost Element: <u>01-Contractor labor</u>	Invoice to: <u>Atlantic Richfield Co.</u>

Lab Bottle Order No:				Matrix			Laboratory No.	No. of Containers	Preservative					Requested Analysis					Sample Point Lat/Long and Comments *Oxy = MTBE, TAME, ETBE, DIPE, TBA
Item No.	Sample Description	Time	Date	Soil/Solid	Water/Liquid	Air			Unpreserved	H <sub>2</sub> SO <sub>4</sub>	HNO <sub>3</sub>	HCl	Methanol	GRO/BTEX/Oxy*	1,2-DCA	Ethanol	EDB	PHO	
1	<del>MW-2</del> <u>Not Sampled</u>		<u>2008</u>															<u>All by 8260</u>	
2	<u>MW-4</u>	<u>0735</u>	<u>01/15</u>		X		<u>3</u>			X		X	X	X	X				
3	<del>MW-5</del> <u>Not Sampled</u>																		
4	<del>MW-6</del> <u>Not Sampled</u>	<u>0715</u>																	
5	<u>MW-7</u>	<u>0715</u>			X		<u>3</u>			X		X	X	X	X				
6	<del>MW-11</del> <u>Not Sampled</u>																		
7	<u>RW-1</u>	<u>0633</u>			X		<u>6</u>			X		X	X	X	X				
8	<del>VW-1</del> <u>Not Sampled</u>																		
9																			
10	<u>TB-771 01152008</u>	<u>0625</u>	X	X			<u>2</u>												<u>HOLD</u>

Sampler's Name: <u>Co. Wilkins</u>	Relinquished By / Affiliation: <u>[Signature]</u>	Date: <u>01-15-08</u>	Time: <u>0950</u>	Accepted By / Affiliation: <u>[Signature] JAL W.Sac.</u>	Date: <u>1/15/08</u>	Time: <u>950</u>
Sampler's Company: <u>Stratus</u>						
Shipment Date: <u>01-15-08</u>						
Shipment Method: <u>Stratus</u>						
Shipment Tracking No: _____						

Special Instructions: Please cc results to rmiller@broadbentinc.com

Custody Seals In Place: Yes / No    Temp Blank: Yes / No    Cooler Temp on Receipt: °F/C    Trip Blank: Yes / No    MS/MSD Sample Submitted: Yes / No

30 January, 2008

Jay Johnson  
Stratus Environmental Inc. [Arco]  
3330 Cameron Park Dr., Suite 550  
Cameron Park, CA 95682

RE: ARCO #0771, Livermore, CA  
Work Order: MRA0686

Enclosed are the results of analyses for samples received by the laboratory on 01/15/08 19:45. If you have any questions concerning this report, please feel free to contact me.

Sincerely,



Lisa Race  
Senior Project Manager

CA ELAP Certificate # 2682

The results in this laboratory report pertain only to the samples tested in the laboratory. The analyses contained in this report were performed in accordance with the BPGCLN Technical Specifications, applicable Federal, State, local regulations and certification requirements as well as the methodologies as described in laboratory SOPs reviewed by the BPGCLN. This entire report was reviewed and approved for release.

Stratus Environmental Inc. [Arco]  
3330 Cameron Park Dr., Suite 550  
Cameron Park CA, 95682

Project: ARCO #0771, Livermore, CA  
Project Number: N/P  
Project Manager: Jay Johnson

MRA0686  
Reported:  
01/30/08 15:34

ANALYTICAL REPORT FOR SAMPLES

Sample ID	Laboratory ID	Matrix	Date Sampled	Date Received
MW-4	MRA0686-01	Water	01/15/08 07:35	01/15/08 19:45
MW-7	MRA0686-02	Water	01/15/08 07:15	01/15/08 19:45
RW-1	MRA0686-03	Water	01/15/08 06:33	01/15/08 19:45
TB-77101152008	MRA0686-04	Water	01/15/08 06:25	01/15/08 19:45

The carbon range for the TPH-GRO has been changed from C6-C10 to C4-C12. The carbon range for TPH-DRO has been changed from C10-C28 to C10-C36. EPA 8015B has been modified to better meet the requirements of California regulatory agencies.

These samples were received with no custody seals.

Stratus Environmental Inc. [Arco]  
3330 Cameron Park Dr., Suite 550  
Cameron Park CA, 95682

Project: ARCO #0771, Livermore, CA  
Project Number: N/P  
Project Manager: Jay Johnson

MRA0686  
Reported:  
01/30/08 15:34

**Volatiles Organic Compounds by 8260B/LUFT GC/MS**  
**TestAmerica Morgan Hill**

Analyte	Result	Reporting Limit	Units	Dilution	Batch	Prepared	Analyzed	Method	Notes
---------	--------	-----------------	-------	----------	-------	----------	----------	--------	-------

**MW-4 (MRA0686-01) Water** Sampled: 01/15/08 07:35 Received: 01/15/08 19:45

Analyte	Result	Reporting Limit	Units	Dilution	Batch	Prepared	Analyzed	Method	Notes
<b>Gasoline Range Organics (C4-C12)</b>	<b>220</b>	50	ug/l	1	8A21014	01/21/08	01/21/08	EPA 8260B/LUFT GC/MS	
tert-Amyl methyl ether	ND	0.50	"	"	"	"	"	"	
<b>Benzene</b>	<b>1.2</b>	0.50	"	"	"	"	"	"	
<b>tert-Butyl alcohol</b>	<b>280</b>	20	"	"	"	"	"	"	
Di-isopropyl ether	ND	0.50	"	"	"	"	"	"	
1,2-Dibromoethane (EDB)	ND	0.50	"	"	"	"	"	"	
1,2-Dichloroethane	ND	0.50	"	"	"	"	"	"	
Ethanol	ND	300	"	"	"	"	"	"	
Ethyl tert-butyl ether	ND	0.50	"	"	"	"	"	"	
Ethylbenzene	ND	0.50	"	"	"	"	"	"	
<b>Methyl tert-butyl ether</b>	<b>61</b>	0.50	"	"	"	"	"	"	BB
Toluene	ND	0.50	"	"	"	"	"	"	
<b>Xylenes (total)</b>	<b>0.50</b>	0.50	"	"	"	"	"	"	
<i>Surrogate: Dibromofluoromethane</i>		108 %	75-130	"	"	"	"	"	
<i>Surrogate: 1,2-Dichloroethane-d4</i>		111 %	60-150	"	"	"	"	"	
<i>Surrogate: Toluene-d8</i>		111 %	75-120	"	"	"	"	"	
<i>Surrogate: 4-Bromofluorobenzene</i>		104 %	55-130	"	"	"	"	"	

**MW-7 (MRA0686-02) Water** Sampled: 01/15/08 07:15 Received: 01/15/08 19:45

Analyte	Result	Reporting Limit	Units	Dilution	Batch	Prepared	Analyzed	Method	Notes
<b>Gasoline Range Organics (C4-C12)</b>	<b>3500</b>	250	ug/l	5	8A21014	01/21/08	01/21/08	EPA 8260B/LUFT GC/MS	
tert-Amyl methyl ether	ND	2.5	"	"	"	"	"	"	
<b>Benzene</b>	<b>120</b>	2.5	"	"	"	"	"	"	
tert-Butyl alcohol	ND	100	"	"	"	"	"	"	
Di-isopropyl ether	ND	2.5	"	"	"	"	"	"	
1,2-Dibromoethane (EDB)	ND	2.5	"	"	"	"	"	"	
1,2-Dichloroethane	ND	2.5	"	"	"	"	"	"	
Ethanol	ND	1500	"	"	"	"	"	"	
Ethyl tert-butyl ether	ND	2.5	"	"	"	"	"	"	
<b>Ethylbenzene</b>	<b>9.0</b>	2.5	"	"	"	"	"	"	
<b>Methyl tert-butyl ether</b>	<b>26</b>	2.5	"	"	"	"	"	"	
<b>Toluene</b>	<b>3.6</b>	2.5	"	"	"	"	"	"	
<b>Xylenes (total)</b>	<b>29</b>	2.5	"	"	"	"	"	"	
<i>Surrogate: Dibromofluoromethane</i>		105 %	75-130	"	"	"	"	"	
<i>Surrogate: 1,2-Dichloroethane-d4</i>		106 %	60-150	"	"	"	"	"	
<i>Surrogate: Toluene-d8</i>		109 %	75-120	"	"	"	"	"	
<i>Surrogate: 4-Bromofluorobenzene</i>		108 %	55-130	"	"	"	"	"	

TestAmerica Morgan Hill

The results in this report apply to the samples analyzed in accordance with the chain of custody document. Unless otherwise stated, results are reported on a wet weight basis. This analytical report must be reproduced in its entirety.



Stratus Environmental Inc. [Arco]  
3330 Cameron Park Dr., Suite 550  
Cameron Park CA, 95682

Project: ARCO #0771, Livermore, CA  
Project Number: N/P  
Project Manager: Jay Johnson

MRA0686  
Reported:  
01/30/08 15:34

**Volatiles Organic Compounds by 8260B/LUFT GC/MS**  
**TestAmerica Morgan Hill**

Analyte	Result	Reporting Limit	Units	Dilution	Batch	Prepared	Analyzed	Method	Notes
<b>RW-1 (MRA0686-03) Water Sampled: 01/15/08 06:33 Received: 01/15/08 19:45</b>									
Gasoline Range Organics (C4-C12)	ND	50	ug/l	1	8A21014	01/21/08	01/21/08	EPA 8260B/LUFT GC/MS	
tert-Amyl methyl ether	ND	0.50	"	"	"	"	"	"	
Benzene	ND	0.50	"	"	"	"	"	"	
tert-Butyl alcohol	ND	20	"	"	"	"	"	"	
Di-isopropyl ether	ND	0.50	"	"	"	"	"	"	
1,2-Dibromoethane (EDB)	ND	0.50	"	"	"	"	"	"	
1,2-Dichloroethane	ND	0.50	"	"	"	"	"	"	
Ethanol	ND	300	"	"	"	"	"	"	
Ethyl tert-butyl ether	ND	0.50	"	"	"	"	"	"	
Ethylbenzene	ND	0.50	"	"	"	"	"	"	
<b>Methyl tert-butyl ether</b>	<b>8.3</b>	0.50	"	"	"	"	"	"	
Toluene	ND	0.50	"	"	"	"	"	"	
Xylenes (total)	ND	0.50	"	"	"	"	"	"	
<i>Surrogate: Dibromofluoromethane</i>		101 %		75-130	"	"	"	"	
<i>Surrogate: 1,2-Dichloroethane-d4</i>		106 %		60-150	"	"	"	"	
<i>Surrogate: Toluene-d8</i>		103 %		75-120	"	"	"	"	
<i>Surrogate: 4-Bromofluorobenzene</i>		98 %		55-130	"	"	"	"	

Stratus Environmental Inc. [Arco]  
3330 Cameron Park Dr., Suite 550  
Cameron Park CA, 95682

Project: ARCO #0771, Livermore, CA  
Project Number: N/P  
Project Manager: Jay Johnson

MRA0686  
Reported:  
01/30/08 15:34

**Volatiles Organic Compounds by 8260B/LUFT GC/MS - Quality Control**  
**TestAmerica Morgan Hill**

Analyte	Result	Reporting Limit	Units	Spike Level	Source Result	%REC	%REC Limits	RPD	RPD Limit	Notes
---------	--------	-----------------	-------	-------------	---------------	------	-------------	-----	-----------	-------

**Batch 8A21014 - EPA 5030B P/T / EPA 8260B/LUFT GC/MS**

**Blank (8A21014-BLK1)**

Prepared & Analyzed: 01/21/08

Gasoline Range Organics (C4-C12)	ND	50	ug/l							
tert-Amyl methyl ether	ND	0.50	"							
Benzene	ND	0.50	"							
tert-Butyl alcohol	ND	20	"							
Di-isopropyl ether	ND	0.50	"							
1,2-Dibromoethane (EDB)	ND	0.50	"							
1,2-Dichloroethane	ND	0.50	"							
Ethanol	ND	300	"							
Ethyl tert-butyl ether	ND	0.50	"							
Ethylbenzene	ND	0.50	"							
Methyl tert-butyl ether	ND	0.50	"							
Toluene	ND	0.50	"							
Xylenes (total)	ND	0.50	"							
<i>Surrogate: Dibromofluoromethane</i>	2.54		"	2.50		102	75-130			
<i>Surrogate: 1,2-Dichloroethane-d4</i>	2.62		"	2.50		105	60-150			
<i>Surrogate: Toluene-d8</i>	2.66		"	2.50		106	75-120			
<i>Surrogate: 4-Bromofluorobenzene</i>	2.47		"	2.50		99	55-130			

**Laboratory Control Sample (8A21014-BS1)**

Prepared & Analyzed: 01/21/08

tert-Amyl methyl ether	9.56	0.50	ug/l	10.0		96	75-125			
Benzene	9.67	0.50	"	10.0		97	75-120			
tert-Butyl alcohol	188	20	"	200		94	80-120			
Di-isopropyl ether	8.88	0.50	"	10.0		89	70-130			
1,2-Dibromoethane (EDB)	9.46	0.50	"	10.0		95	75-130			
1,2-Dichloroethane	9.17	0.50	"	10.0		92	65-130			
Ethanol	175	300	"	200		88	50-150			
Ethyl tert-butyl ether	9.45	0.50	"	10.0		94	75-130			
Ethylbenzene	10.4	0.50	"	10.0		104	80-125			
Methyl tert-butyl ether	9.46	0.50	"	10.0		95	80-130			
Toluene	10.4	0.50	"	10.0		104	80-120			
Xylenes (total)	31.4	0.50	"	30.0		105	80-125			
<i>Surrogate: Dibromofluoromethane</i>	2.48		"	2.50		99	75-130			
<i>Surrogate: 1,2-Dichloroethane-d4</i>	2.29		"	2.50		92	60-150			
<i>Surrogate: Toluene-d8</i>	2.72		"	2.50		109	75-120			
<i>Surrogate: 4-Bromofluorobenzene</i>	2.49		"	2.50		100	55-130			

TestAmerica Morgan Hill

*The results in this report apply to the samples analyzed in accordance with the chain of custody document. Unless otherwise stated, results are reported on a wet weight basis. This analytical report must be reproduced in its entirety.*

Stratus Environmental Inc. [Arco]  
3330 Cameron Park Dr., Suite 550  
Cameron Park CA, 95682

Project: ARCO #0771, Livermore, CA  
Project Number: N/P  
Project Manager: Jay Johnson

MRA0686  
Reported:  
01/30/08 15:34

**Volatiles Organic Compounds by 8260B/LUFT GC/MS - Quality Control**  
**TestAmerica Morgan Hill**

Analyte	Result	Reporting Limit	Units	Spike Level	Source Result	%REC	%REC Limits	RPD	RPD Limit	Notes
---------	--------	-----------------	-------	-------------	---------------	------	-------------	-----	-----------	-------

**Batch 8A21014 - EPA 5030B P/T / EPA 8260B/LUFT GC/MS**

<b>Laboratory Control Sample (8A21014-BS2)</b>				Prepared & Analyzed: 01/21/08						
Gasoline Range Organics (C4-C12)	439	50	ug/l	500		88	55-130			
Surrogate: Dibromofluoromethane	2.55		"	2.50		102	75-130			
Surrogate: 1,2-Dichloroethane-d4	2.40		"	2.50		96	60-150			
Surrogate: Toluene-d8	2.74		"	2.50		110	75-120			
Surrogate: 4-Bromofluorobenzene	2.68		"	2.50		107	55-130			

<b>Laboratory Control Sample Dup (8A21014-BSD2)</b>				Prepared & Analyzed: 01/21/08						
Gasoline Range Organics (C4-C12)	435	50	ug/l	500		87	55-130	0.9	20	
Surrogate: Dibromofluoromethane	2.42		"	2.50		97	75-130			
Surrogate: 1,2-Dichloroethane-d4	2.29		"	2.50		92	60-150			
Surrogate: Toluene-d8	2.65		"	2.50		106	75-120			
Surrogate: 4-Bromofluorobenzene	2.60		"	2.50		104	55-130			

<b>Matrix Spike (8A21014-MS1)</b>				Source: MRA0686-01		Prepared & Analyzed: 01/21/08				
Gasoline Range Organics (C4-C12)	814	50	ug/l	550	219	108	25-150			
tert-Amyl methyl ether	9.86	0.50	"	10.0	ND	99	75-140			
Benzene	10.8	0.50	"	10.0	1.18	96	80-120			
tert-Butyl alcohol	471	20	"	200	278	97	80-125			
Di-isopropyl ether	9.25	0.50	"	10.0	0.210	90	75-135			
1,2-Dibromoethane (EDB)	10.0	0.50	"	10.0	ND	100	80-135			
1,2-Dichloroethane	9.44	0.50	"	10.0	ND	94	65-145			
Ethanol	184	300	"	200	ND	92	50-150			
Ethyl tert-butyl ether	9.64	0.50	"	10.0	ND	96	80-135			
Ethylbenzene	10.1	0.50	"	10.0	ND	101	75-130			
Methyl tert-butyl ether	60.5	0.50	"	10.0	61.1	0	75-145			BB
Toluene	10.2	0.50	"	10.0	ND	102	80-125			
Xylenes (total)	30.9	0.50	"	30.0	0.500	101	75-125			
Surrogate: Dibromofluoromethane	2.48		"	2.50		99	75-130			
Surrogate: 1,2-Dichloroethane-d4	2.48		"	2.50		99	60-150			
Surrogate: Toluene-d8	2.79		"	2.50		112	75-120			
Surrogate: 4-Bromofluorobenzene	2.51		"	2.50		100	55-130			

Stratus Environmental Inc. [Arco]  
3330 Cameron Park Dr., Suite 550  
Cameron Park CA, 95682

Project: ARCO #0771, Livermore, CA  
Project Number: N/P  
Project Manager: Jay Johnson

MRA0686  
Reported:  
01/30/08 15:34

**Volatiles Organic Compounds by 8260B/LUFT GC/MS - Quality Control**  
**TestAmerica Morgan Hill**

Analyte	Result	Reporting Limit	Units	Spike Level	Source Result	%REC	%REC Limits	RPD	RPD Limit	Notes
---------	--------	-----------------	-------	-------------	---------------	------	-------------	-----	-----------	-------

**Batch 8A21014 - EPA 5030B P/T / EPA 8260B/LUFT GC/MS**

Matrix Spike Dup (8A21014-MSD1)	Source: MRA0686-01			Prepared & Analyzed: 01/21/08						
Gasoline Range Organics (C4-C12)	770	50	ug/l	550	219	100	25-150	5	20	
tert-Amyl methyl ether	11.4	0.50	"	10.0	ND	114	75-140	14	25	
Benzene	11.1	0.50	"	10.0	1.18	100	80-120	3	20	
tert-Butyl alcohol	468	20	"	200	278	95	80-125	0.7	25	
Di-isopropyl ether	9.92	0.50	"	10.0	0.210	97	75-135	7	25	
1,2-Dibromoethane (EDB)	11.8	0.50	"	10.0	ND	118	80-135	16	30	
1,2-Dichloroethane	10.5	0.50	"	10.0	ND	105	65-145	11	25	
Ethanol	169	300	"	200	ND	84	50-150	9	25	
Ethyl tert-butyl ether	11.0	0.50	"	10.0	ND	110	80-135	13	25	
Ethylbenzene	10.1	0.50	"	10.0	ND	101	75-130	0.2	20	
Methyl tert-butyl ether	66.2	0.50	"	10.0	61.1	52	75-145	9	25	BB
Toluene	10.8	0.50	"	10.0	ND	108	80-125	5	25	
Xylenes (total)	30.4	0.50	"	30.0	0.500	100	75-125	2	20	
Surrogate: Dibromofluoromethane	2.56		"	2.50		102	75-130			
Surrogate: 1,2-Dichloroethane-d4	2.74		"	2.50		110	60-150			
Surrogate: Toluene-d8	2.71		"	2.50		108	75-120			
Surrogate: 4-Bromofluorobenzene	2.55		"	2.50		102	55-130			

Stratus Environmental Inc. [Arco]  
3330 Cameron Park Dr., Suite 550  
Cameron Park CA, 95682

Project: ARCO #0771, Livermore, CA  
Project Number: N/P  
Project Manager: Jay Johnson

MRA0686  
Reported:  
01/30/08 15:34

**Notes and Definitions**

BB Sample > 4x spike concentration  
DET Analyte DETECTED  
ND Analyte NOT DETECTED at or above the reporting limit or MDL, if MDL is specified  
NR Not Reported  
dry Sample results reported on a dry weight basis  
RPD Relative Percent Difference



bp  
A BP affiliated company

### Chain of Custody Record

Project Name: ARCO 771  
 BP BU/AR Region/Enfos Segment: BP > Americas > West > Retail > Alameda > 771  
 State or Lead Regulatory Agency: \_\_\_\_\_  
 Requested Due Date (mm/dd/yy): 5/14/08

On-site Time: <u>0745</u>	Temp: <u>20's</u>
Off-site Time: <u>0750</u>	Temp: <u>30's</u>
Sky Conditions: <u>VA, KNOWN</u>	
Meteorological Events: <u>Fog</u>	
Wind Speed: <u>—</u>	Direction: <u>—</u>

Lab Name: <u>TestAmerica</u>	BP/AR Facility No.: <u>771</u>	Consultant/Contractor: <u>Stratus Environmental, Inc.</u>
Address: <u>885 Jarvis Drive</u>	BP/AR Facility Address: <u>899 Rincon Ave., Livermore</u>	Address: <u>3330 Cameron Park Drive, Suite 550</u>
<u>Morgan Hill, CA 95937</u>	Site Lat/Long: _____	<u>Cameron Park, CA 95682</u>
Lab PM: <u>Lisa Race</u>	California Global ID No.: <u>T0600100113</u>	Consultant/Contractor Project No.: _____
Tele/Fax: <u>408-782-8156 408-782-6308 (fax)</u>	Enfos Project No.: _____	Consultant/Contractor PM: <u>Jay Johnson</u>
BP/AR PM Contact: <u>Paul Supple</u>	Provision or OOC (circle one) <u>Provision</u>	Tele/Fax: <u>(530) 676-6000 / (530) 676-6005</u>
Address: <u>2010 Crow Canyon Place, Suite 150</u>	Phase/WBS: <u>04-Monitoring</u>	Report Type & QC Level: <u>Level 1 with EDF</u>
<u>San Ramon, CA</u>	Sub Phase/Task: <u>03-Analytical</u>	E-mail EDD To: <u>gjewitt@stratusinc.net</u>
Tele/Fax: <u>925-275-3506</u>	Cost Element: <u>01-Contractor labor</u>	Invoice to: <u>Atlantic Richfield Co.</u>

Item No.	Sample Description	Time	Date	Matrix			Laboratory No.	No. of Containers	Preservative					Requested Analysis					Sample Point Lat/Long and Comments *Oxy = MTBE, TAME, ETBE, DIPE, TBA							
				Soil/Solid	Water/Liquid	Air			Unpreserved	H <sub>2</sub> SO <sub>4</sub>	HNO <sub>3</sub>	HCl	Methanol	GR0/BTEX/Oxy*	1,2-DCA	Ethanol	EDB	PER								
1	<del>MW-2 Not Sampled</del>						<u>MRA0064</u>																			
2	<u>MW-4</u>	<u>0735</u>	<u>01/15</u>		X		<u>-01</u>	<u>3</u>								X	X	X	X							
3	<del>MW-5 Not Sampled</del>																									
4	<del>MW-6 Not Sampled</del>	<u>0745</u>																								
5	<u>MW-7</u>	<u>0745</u>			X		<u>-02</u>	<u>3</u>							X	X	X	X								
6	<del>MW-11 Not Sampled</del>																									
7	<u>RW-1</u>	<u>0633</u>			X		<u>-03</u>	<u>6</u>							X	X	X	X								
8	<del>MW-1 Not Sampled</del>																									
9																										
10	<u>TB-771 01152008</u>	<u>0625</u>	X	X			<u>-04</u>	<u>2</u>																		<u>HOLD</u>

Sampler's Name: <u>Co. Williams</u>	Relinquished By / Affiliation: <u>[Signature]</u>	Date: <u>01-15-08</u>	Time: <u>0950</u>	Accepted By / Affiliation: <u>[Signature]</u>	Date: <u>7/15/08</u>	Time: <u>0950</u>
Sampler's Company: <u>Stratus</u>						
Shipment Date: <u>01-15-08</u>						
Shipment Method: <u>Stratus</u>						
Shipment Tracking No: _____						

Special Instructions: Please cc results to rmler@broadbentline.com

Custody Seals In Place: Yes /  No | Temp Blank: Yes /  No | Cooler Temp on Receipt: 3 °F/C | Trip Blank: Yes /  No | MS/MSD Sample Submitted: Yes /  No

## TEST AMERICA SAMPLE RECEIPT LOG

CLIENT NAME: <u>ADW 771</u>	DATE REC'D AT LAB: <u>11/5/08</u>	For Regulatory Purposes? <input type="checkbox"/> DRINKING WATER <input type="checkbox"/> WASTE WATER <input checked="" type="checkbox"/> OTHER
REC. BY (PRINT): <u>D.V.</u>	TIME REC'D AT LAB: <u>1945</u>	
WORKORDER: <u>MRA0686</u>	DATE LOGGED IN: <u>1/18/09</u>	

CIRCLE THE APPROPRIATE RESPONSE	LAB SAMPLE #	CLIENT ID	CONTAINER DESCRIPTION	PRESERVATIVE	pH	SAMPLE MATRIX	DATE SAMPLED	REMARKS: CONDITION (ETC.)
1. Custody Seal(s) Present / <u>Absent</u> Intact / Broken*								/
2. Chain-of-Custody Present / <u>Absent</u> *								
3. Traffic Reports or Packing List: Present / <u>Absent</u>								
4. Airbill: Airbill / Sticker Present / <u>Absent</u>								
5. Airbill #:								
6. Sample Labels: <u>Present</u> / Absent								
7. Sample IDs: Listed / Not Listed on Chain-of-Custody								
8. Sample Condition: <u>Intact</u> / Broken* / Leaking*								
9. Does information on chain-of-custody, traffic reports and sample labels agree? <u>Yes</u> / No*								
10. Sample received within hold time? <u>Yes</u> / No*								
11. Adequate sample volume received? <u>Yes</u> / No*								
12. Proper preservatives used? <u>Yes</u> / No*								
13. Trip Blank / Temp Blank Received? (circle which, if yes) <u>Yes</u> / No*								
14. Read Temp: <u>4.3</u> Correction Factor: <u>-1.0</u> Corrected Temp: <u>3.3</u> Is corrected temp. 0-6°C? <u>Yes</u> / No**								

\*\*Exception (if any): Metals / Perchlorate  
DFF on Ice or Problem COC

\*IF CIRCLED, CONTACT PROJECT MANAGER AND ATTACH RECORD OF RESOLUTION.

**APPENDIX B**

**GEOTRACKER UPLOAD CONFIRMATION**



# Electronic Submittal Information

[Main Menu](#) | [View/Add Facilities](#) | [Upload EDD](#) | [Check EDD](#)

## UPLOADING A GEO\_WELL FILE

Processing is complete. No errors were found!  
Your file has been successfully submitted!

<b><u>Submittal Title:</u></b>	1Q08 GEO_WELL 771
<b><u>Facility Global ID:</u></b>	T0600100113
<b><u>Facility Name:</u></b>	ARCO #00771
<b><u>Submittal Date/Time:</u></b>	4/17/2008 11:56:49 AM
<b><u>Confirmation Number:</u></b>	5182009637

[Back to Main Menu](#)

Logged in as BROADBENT-C  
(CONTRACTOR)

CONTACT SITE [ADMINISTRATOR](#).

# Electronic Submittal Information

[Main Menu](#) | [View/Add Facilities](#) | [Upload EDD](#) | [Check EDD](#)

Your EDF file has been successfully uploaded!

**Confirmation Number:** 8252311229

**Date/Time of Submittal:** 4/17/2008 11:58:54 AM

**Facility Global ID:** T0600100113

**Facility Name:** ARCO #00771

**Submittal Title:** 1Q08 GW Monitoring

**Submittal Type:** GW Monitoring Report

[Click here](#) to view the detections report for this upload.

**ARCO #00771**  
899 RINCON  
LIVERMORE, CA 94550

**Regional Board - Case #: 01-0121**  
SAN FRANCISCO BAY RWQCB (REGION 2)  
**Local Agency (lead agency) - Case #: RO0000200**  
ALAMEDA COUNTY LOP - (SP)

<u>CONF #</u>	<u>TITLE</u>	<u>QUARTER</u>
8252311229	1Q08 GW Monitoring	Q1 2008
<u>SUBMITTED BY</u>	<u>SUBMIT DATE</u>	<u>STATUS</u>
Broadbent & Associates, Inc.	4/17/2008	PENDING REVIEW

## SAMPLE DETECTIONS REPORT

# FIELD POINTS SAMPLED	3
# FIELD POINTS WITH DETECTIONS	3
# FIELD POINTS WITH WATER SAMPLE DETECTIONS ABOVE MCL	2
SAMPLE MATRIX TYPES	WATER

## METHOD QA/QC REPORT

METHODS USED	8260FAB
TESTED FOR REQUIRED ANALYTES?	Y
LAB NOTE DATA QUALIFIERS	Y

## QA/QC FOR 8021/8260 SERIES SAMPLES

TECHNICAL HOLDING TIME VIOLATIONS	0
METHOD HOLDING TIME VIOLATIONS	0
LAB BLANK DETECTIONS ABOVE REPORTING DETECTION LIMIT	0
LAB BLANK DETECTIONS	0
DO ALL BATCHES WITH THE 8021/8260 SERIES INCLUDE THE FOLLOWING?	
- LAB METHOD BLANK	Y
- MATRIX SPIKE	Y
- MATRIX SPIKE DUPLICATE	Y
- BLANK SPIKE	Y
- SURROGATE SPIKE	Y

## WATER SAMPLES FOR 8021/8260 SERIES

MATRIX SPIKE / MATRIX SPIKE DUPLICATE(S) % RECOVERY BETWEEN 65-135%	Y
MATRIX SPIKE / MATRIX SPIKE DUPLICATE(S) RPD LESS THAN 30%	Y
SURROGATE SPIKES % RECOVERY BETWEEN 85-115%	Y
BLANK SPIKE / BLANK SPIKE DUPLICATES % RECOVERY BETWEEN 70-130%	Y

**SOIL SAMPLES FOR 8021/8260 SERIES**

MATRIX SPIKE / MATRIX SPIKE DUPLICATE(S) % RECOVERY BETWEEN 65-135% n/a  
MATRIX SPIKE / MATRIX SPIKE DUPLICATE(S) RPD LESS THAN 30% n/a  
SURROGATE SPIKES % RECOVERY BETWEEN 70-125% n/a  
BLANK SPIKE / BLANK SPIKE DUPLICATES % RECOVERY BETWEEN 70-130% n/a

---

**FIELD QC SAMPLES**

<u>SAMPLE</u>	<u>COLLECTED</u>	<u>DETECTIONS &gt; REPD</u>
QCTB SAMPLES	N	0
QCEB SAMPLES	N	0
QCAB SAMPLES	N	0