



Atlantic Richfield Company
(a BP affiliated company)

P.O. Box 1257
San Ramon, CA 94583
Phone: (925) 275-3801
Fax: (925) 275-3815

October 30, 2007

Re: Third Quarter, 2007 Semi-Annual Ground-Water Monitoring Report
Atlantic Richfield Company Station #771
899 Rincon Avenue
Livermore, California
ACEH Case RO0000200

RECEIVED

11:44 am, Nov 02, 2007

Alameda County
Environmental Health



"I declare, that to the best of my knowledge at the present time, that the information and/or recommendations contained in the attached document are true and correct."

Submitted by:

Paul Supple
Environmental Business Manager

**Third Quarter, 2007 Semi-Annual
Ground-Water Monitoring Report**
Atlantic Richfield Company Station #771
899 Rincon Avenue
Livermore, California

Prepared for

Mr. Paul Supple
Environmental Business Manager
Atlantic Richfield Company
P.O. Box 1257
San Ramon, California 94583

Prepared by



1324 Mangrove Avenue, Suite 212
Chico, California 95926
(530) 566-1400
www.broadbentinc.com

October 2007

Project No. 06-02-608

Broadbent & Associates, Inc.
1324 Mangrove Ave., Suite 212
Chico, CA 95926
Voice (530) 566-1400
Fax (530) 566-1401



October 30, 2007

Project No. 06-02-608

Atlantic Richfield Company
P.O. Box 1257
San Ramon, CA 94583
Submitted via ENFOS

Attn.: Mr. Paul Supple

Re: Third Quarter, 2007 Semi-Annual Ground-Water Monitoring Report, Atlantic Richfield Company Station #771, 899 Rincon Avenue, Livermore California. ACEH Case RO0000200.

Dear Mr. Supple:

Attached is the *Third Quarter, 2007 Semi-Annual Ground-Water Monitoring Report* for Atlantic Richfield Company Station #771 (herein referred to as Station #771) located at 899 Rincon Avenue, Livermore, California (Property). This report presents a summary of Third Quarter, 2007 ground-water monitoring results.

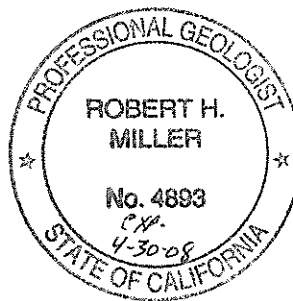
Should you have questions regarding the work performed or results obtained, please do not hesitate to contact us at (530) 566-1400.

Sincerely,

BROADBENT & ASSOCIATES, INC.

Matthew G. Herrick, P.G.
Project Hydrogeologist

Robert H. Miller, P.G., C.H.G.
Principal Hydrogeologist



Enclosures

cc: Mr. Steven Plunkett, Alameda County Environmental Health, 1131 Harbor Bay Parkway, Suite 250, Alameda, CA, 94502 (Submitted via ACEH ftp Site)
Mr. Paul M. Smith, Livermore-Pleasanton Fire Department, 3560 Nevada St., Pleasanton, CA 94566
Mr. Chuck Headlee, RWQCB, 1515 Clay St. Suite 1400, Oakland, CA 94612

STATION #771 SEMI-ANNUAL GROUND-WATER MONITORING REPORT

Facility: #771	Address:	899 Rincon Avenue, Livermore, CA
Station #771 Environmental Business Manager:		Mr. Paul Supple
Consulting Co./Contact Persons:		Broadbent & Associates, Inc. (BAI) / Rob Miller & Matt Herrick
Primary Agency/Regulatory ID No.:		Alameda County Environmental Health (ACEH)/ ACEH Case RO0000200
Consultant Project No.:		06-02-608
Facility Permits/Permitting Agency.:		NA

WORK PERFORMED THIS QUARTER (Third Quarter, 2007):

1. Submitted Second Quarter, 2007 Status Report. Work performed by BAI.
2. Conducted ground-water monitoring/sampling for Third Quarter, 2007. Work performed by Stratus Environmental, Inc.

WORK PROPOSED FOR NEXT QUARTER (Fourth Quarter, 2007):

1. Submit Third Quarter, 2007 Semi-Annual Ground-Water Monitoring Report (contained herein).
2. No environmental work activities are scheduled to be completed on the Property during the Fourth Quarter, 2007.

QUARTERLY RESULTS SUMMARY:

Current phase of project:	Monitoring
Frequency of ground-water sampling:	MW-4, MW-7, RW-1 = Semi-Annual (1Q and 3Q) MW-2, MW-5, MW-6, MW-11, VW-1, = Annual (3Q)
Frequency of ground-water monitoring:	Semi-annual (1Q and 3Q)
Is free product (FP) present on-site:	No
FP recovered this quarter:	NA (FP last recovered in 1992)
Cumulative FP recovered:	3.06 gallons, Wells MW-1, MW-2, and MW-5
Current remediation techniques:	Air Diffusion
Depth to ground water (below TOC):	23.58 (VW-1) to 33.42 (MW-5)
General ground-water flow direction:	North-Northeast to Southwest
Approximate hydraulic gradient:	0.03 to 0.04 feet per foot

DISCUSSION:

During Third Quarter, 2007 gasoline range organics (GRO) were detected in wells MW-2, MW-4, MW-5, and MW-7 with concentrations ranging from 470 µg/L (MW-5) to 2,400 µg/L (MW-4 and MW-7). Benzene, toluene, ethylbenzene, and xylenes were detected in wells MW-2, MW-4, MW-5, and MW-7. Benzene concentrations ranged from 36 µg/L in MW-5 to 140 µg/L in MW-4 and MW-7. Toluene concentrations ranged from 0.84 µg/L in MW-5 to 6.8 µg/L in MW-4. Ethylbenzene concentrations ranged from 0.97 µg/L in MW-5 to 9.5 µg/L in MW-2. Xylene concentrations ranged from 2.2 µg/L in MW-5 to 7.3 µg/L in MW-7. Methyl tert-butyl ether (MTBE) was detected in wells MW-2, MW-4, MW-5, and MW-7 with concentrations ranging from 45 µg/L to 110 µg/L in wells MW-2 and MW-5, respectively. Tert-Butyl alcohol (TBA) was detected in wells MW-2, MW-4, MW-5, and MW-7 with concentrations ranging from 89 µg/L in MW-2 to 830 µg/L in MW-4. 1,2-Dichloroethane

(1,2-DCA) was detected in well MW-4 at 0.76 µg/L. No other analytes were detected during Third Quarter, 2007.

Wells MW-9 and MW-10 were not gauged for depth to water during Third Quarter, 2007 because they were covered by parked cars and not accessible.

Analytes detected during Third Quarter, 2007 were all within the historic minimum and maximum concentration ranges recorded for each well, with the following exception: ethylbenzene and xylenes in MW-7 are the lowest concentrations historically detected in the well. Ground-water elevations measured during Third Quarter, 2007 were within historic minimum and maximum ranges for each well.

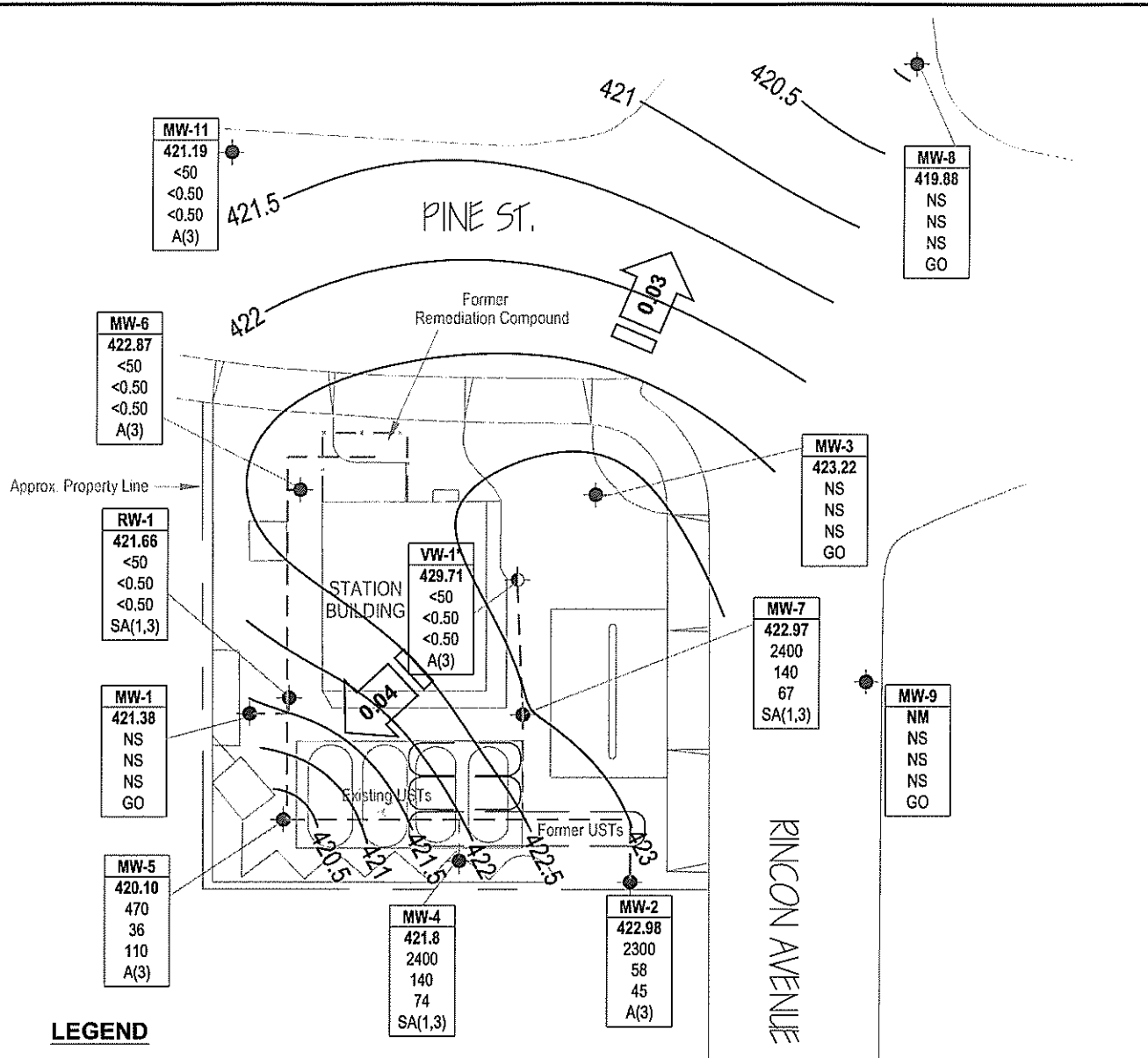
Drawing 1 depicts the ground-water elevation contour and an analytical summary map for the Third Quarter, 2007. Table 1 includes a summary of ground-water monitoring data including relative water elevations and laboratory analyses. Table 2 provides a summary of fuel additives analytical data. Table 3 lists historical ground-water flow direction and gradient data.

CLOSURE:

The findings presented in this report are based upon: observations of Stratus field personnel (see Appendix A), the points investigated, and results of laboratory tests performed by TestAmerica (Morgan Hill, CA). Our services were performed in accordance with the generally accepted standard of practice at the time this report was written. No other warranty, expressed or implied was made. This report has been prepared for the exclusive use of Atlantic Richfield Company. It is possible that variations in soil or ground-water conditions could exist beyond points explored in this investigation. Also, changes in site conditions could occur in the future due to variations in rainfall, temperature, regional water usage, or other factors.

ATTACHMENTS:

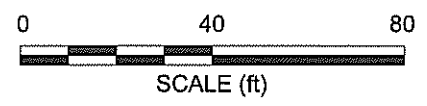
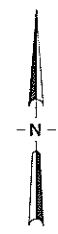
- Drawing 1. Ground-Water Elevation Contour and Analytical Summary Map, Station #771, Livermore, CA
- Table 1. Summary of Ground-Water Monitoring Data: Relative Water Elevations and Laboratory Analyses, Station #771, Livermore, CA
- Table 2. Summary of Fuel Additives Analytical Data, Station #771, Livermore, CA
- Table 3. Historical Ground-Water Flow Direction and Gradient, Station #771, Livermore, CA
- Appendix A. Stratus Environmental, Inc. Ground-Water Sampling Data Package (Includes Field Data Sheets, Non-Hazardous Waste Data Form, and Certified Laboratory Analytical Results and Chain of Custody Documentation)
- Appendix B. GeoTracker Upload Confirmation



LEGEND

- Monitoring well location
- Vapor extraction well location
- Well ID** - Well designation
- ELEV** - Ground-water elevation (ft above MSL)
- GRO** - GRO, Benzene & MTBE concentrations (µg/L)
- Benzene**
- MTBE**
- SA or A** - Sampling frequency
- < - Not detected at or above laboratory reporting limits
- * - Not used in contouring
- NM - Not monitored
- NS - Not sampled
- A(3) - Sampled annually during 3rd quarter
- GO - Not sampled, gauged only
- SA(1,3) - Sampled semi-annually, 1st & 3rd quarters
- 421 - Ground-water elevation contour (ft above MSL)
- Approximate ground-water flow direction and gradient (ft/ft)
- --- Remediation piping

MW-10
NM
NS
NS
NS
GO



NOTE: SITE MAP ADAPTED FROM URS FIGURES. SITE DIMENSIONS AND FACILITY LOCATIONS NOT VERIFIED.

Table 1. Summary of Ground-Water Monitoring Data: Relative Water Elevations and Laboratory Analyses

Station #771, 899 Rincon Ave., Livermore, CA

Well and Sample Date	P/NP	Comments	TOC (feet msl)	Top of Screen (ft bgs)	Bottom of Screen (ft bgs)	DTW (feet bgs)	Water Level Elevation (feet msl)	Concentrations in (µg/L)						DO (mg/L)	pH
								GRO/TPHg	Benzene	Toluene	Ethyl-Benzene	Total Xylenes	MTBE		
MW-1															
3/20/1995	--		451.73	32.00	41.00	24.50	427.23	90,000	1,800	1,100	1,000	5,600	--	--	--
6/2/1995	--		451.73	32.00	41.00	25.60	426.13	81,000	2,000	1,400	990	4,600	--	--	--
8/23/1995	--		451.73	32.00	41.00	29.04	422.69	44,000	2,400	1,900	670	3,800	<300	--	--
12/4/1995	--		451.73	32.00	41.00	31.31	420.42	22,000	870	660	390	2,200	--	--	--
2/20/1996	--		451.73	32.00	41.00	22.26	429.47	21,000	1,500	1,200	650	3,500	<300	--	--
5/15/1996	--		451.73	32.00	41.00	23.42	428.31	36,000	3,000	2,500	960	5,700	<250	--	--
8/13/1996	--		451.73	32.00	41.00	26.83	424.90	19,000	730	580	450	2,500	<200	--	--
11/13/1996	--		451.73	32.00	41.00	31.05	420.68	6,600	47	16	74	160	<30	--	--
3/26/1997	--		451.73	32.00	41.00	26.29	425.44	1,900	100	55	37	200	<30	--	--
5/15/1997	--		451.73	32.00	41.00	28.65	423.08	16,000	490	250	250	1,100	<120	--	--
8/26/1997	--		451.73	32.00	41.00	31.53	420.20	190	6.7	3	6.3	25	<3	--	--
11/5/1997	--		451.73	32.00	41.00	33.93	417.80	63	0.5	<0.5	0.8	2.4	29	--	--
2/18/1998	--		451.73	32.00	41.00	20.46	431.27	23,000	1,500	610	550	3,000	<120	--	--
5/20/1998	--		451.73	32.00	41.00	23.84	427.89	50,000	4,400	1,900	1,400	80,000	<300	--	--
7/30/1998	P		451.73	32.00	41.00	26.94	424.79	150	<0.5	<0.5	<0.5	1.6	<3	8.74	--
10/29/1998	NP		451.73	32.00	41.00	32.58	419.15	<50	<0.5	<0.5	<0.5	1.8	<3	2.0	--
3/16/1999	P		451.73	32.00	41.00	26.20	425.53	3,200	160	32	89	390	270	2.0	--
5/5/1999	P		451.73	32.00	41.00	27.57	424.16	3,600	140	46	76	290	170	11.65	--
8/26/1999	P		451.73	32.00	41.00	30.25	421.48	3,200	210	29	100	220	120	1.43	--
12/3/1999	NP		451.73	32.00	41.00	32.70	419.03	53	<0.5	<0.5	<0.5	1	<3	2.12	--
3/13/2000	P		451.73	32.00	41.00	24.45	427.28	<50	<0.5	<0.5	<0.5	<1	<3	5.81	--
6/20/2000	--	b	451.73	32.00	41.00	--	--	67.4	3.88	<0.500	1.78	1.48	<2.50	--	--
6/20/2000	P		451.73	32.00	41.00	27.79	423.94	356	40.1	7.17	11.9	22.7	<2.50	5.1	--
8/31/2000	--		451.73	32.00	41.00	30.35	421.38	--	--	--	--	--	--	--	--
2/9/2001	--		451.73	32.00	41.00	30.95	420.78	--	--	--	--	--	--	--	--
9/17/2001	--		451.73	32.00	41.00	30.85	420.88	--	--	--	--	--	--	--	--
1/21/2002	--		451.73	32.00	41.00	30.61	421.12	--	--	--	--	--	--	--	--
7/19/2002	--		451.73	32.00	41.00	31.55	420.18	--	--	--	--	--	--	--	--
1/15/2003	--		451.73	32.00	41.00	22.99	428.74	--	--	--	--	--	--	--	--
7/9/2003	--		451.73	32.00	41.00	30.35	421.38	--	--	--	--	--	--	--	--

Table 1. Summary of Ground-Water Monitoring Data: Relative Water Elevations and Laboratory Analyses

Station #771, 899 Rincon Ave., Livermore, CA

Well and Sample Date	P/NP	Comments	TOC (feet msl)	Top of Screen (ft bgs)	Bottom of Screen (ft bgs)	DTW (feet bgs)	Water Level Elevation (feet msl)	Concentrations in (µg/L)						DO (mg/L)	pH
								GRO/TPHg	Benzene	Toluene	Ethyl-Benzene	Total Xylenes	MTBE		
MW-1 Cont.															
02/19/2004	--		451.73	32.00	41.00	26.24	425.49	--	--	--	--	--	--	--	--
08/04/2004	--		454.23	32.00	41.00	26.36	427.87	--	--	--	--	--	--	--	--
01/18/2005	--		454.23	32.00	41.00	24.47	429.76	--	--	--	--	--	--	--	--
07/15/2005	--		454.23	32.00	41.00	29.44	424.79	--	--	--	--	--	--	--	--
01/10/2006	--		454.23	32.00	41.00	22.58	431.65	--	--	--	--	--	--	--	--
7/21/2006	--		454.23	32.00	41.00	20.73	433.50	--	--	--	--	--	--	--	--
1/17/2007	--		454.23	32.00	41.00	31.88	422.35	--	--	--	--	--	--	--	--
7/18/2007	--		454.23	32.00	41.00	32.85	421.38	--	--	--	--	--	--	--	--
MW-2															
3/20/1995	--		449.49	30.00	38.00	20.27	429.22	54,000	2,600	1,600	1,200	7,600	--	--	--
6/2/1995	--		449.49	30.00	38.00	22.32	427.17	37,000	2,200	800	980	4,800	--	--	--
8/23/1995	--		449.49	30.00	38.00	25.69	423.80	65,000	1,100	310	840	3,000	<500	--	--
12/4/1995	--		449.49	30.00	38.00	28.52	420.97	19,000	680	150	410	1,600	--	--	--
2/20/1996	--		449.49	30.00	38.00	19.00	430.49	22,000	1,200	240	590	2,200	<300	--	--
5/15/1996	--		449.49	30.00	38.00	20.03	429.46	25,000	1,200	240	610	2,100	<300	--	--
8/13/1996	--		449.49	30.00	38.00	24.44	425.05	19,000	640	110	420	1,200	<300	--	--
11/13/1996	--		449.49	30.00	38.00	28.42	421.07	15,000	260	52	220	640	<200	--	--
3/26/1997	--		449.49	30.00	38.00	22.98	426.51	17,000	580	120	360	980	<120	--	--
5/15/1997	--		449.49	30.00	38.00	25.40	424.09	18,000	420	63	340	730	<120	--	--
8/26/1997	--		449.49	30.00	38.00	28.38	421.11	5,300	210	26	140	270	<120	--	--
11/5/1997	--		449.49	30.00	38.00	31.93	417.56	560	42	2.6	7	9	<40	--	--
2/18/1998	--		449.49	30.00	38.00	16.87	432.62	18,000	710	120	480	1,100	130	--	--
5/20/1998	--		449.49	30.00	38.00	20.29	429.20	16,000	480	72	440	1,100	<120	--	--
7/30/1998	P		449.49	30.00	38.00	23.51	425.98	9,700	240	33	210	490	<120	9.21	--
10/29/1998	NP		449.49	30.00	38.00	30.08	419.41	58	<0.5	<0.5	<0.5	1.2	<3	1.0	--
3/16/1999	P		449.49	30.00	38.00	23.22	426.27	4,700	120	13	90	220	60	2.0	--
5/5/1999	P		449.49	30.00	38.00	24.05	425.44	5,500	58	7.1	58	98	17	9.09	--
8/26/1999	P		449.49	30.00	38.00	26.44	423.05	3,700	55	11	60	64	26	1.9	--
12/3/1999	NP		449.49	30.00	38.00	30.15	419.34	130	<0.5	<0.5	0.7	1.8	<3	1.96	--
3/13/2000	P		449.49	30.00	38.00	20.68	428.81	<50	<0.5	<0.5	<0.5	<1	<3	--	--

Table 1. Summary of Ground-Water Monitoring Data: Relative Water Elevations and Laboratory Analyses

Station #771, 899 Rincon Ave., Livermore, CA

Well and Sample Date	P/NP	Comments	TOC (feet msf)	Top of Screen (ft bgs)	Bottom of Screen (ft bgs)	DTW (feet bgs)	Water Level Elevation (feet msf)	Concentrations in (µg/L)						DO (mg/L)	pH
								GRO/TPHg	Benzene	Toluene	Ethyl-Benzene	Total Xylenes	MTBE		
MW-2 Cont.															
6/20/2000	P		449.49	30.00	38.00	23.08	426.41	226	2.2	<0.500	4.83	7.88	<2.50	4.9	--
8/31/2000	P		449.49	30.00	38.00	26.71	422.78	87.1	1.78	<0.500	1.33	1.15	<2.50	1.59	--
2/9/2001	--		449.49	30.00	38.00	29.65	419.84	--	--	--	--	--	--	--	--
9/17/2001	P		449.49	30.00	38.00	27.62	421.87	3,100	300	12	8.8	18	120	1.7	--
1/21/2002	--		449.49	30.00	38.00	27.09	422.40	--	--	--	--	--	--	--	--
7/19/2002	P	a	449.49	30.00	38.00	27.82	421.67	4,700	280	13	120	19	16	0.8	7.4
1/15/2003	--		449.49	30.00	38.00	22.18	427.31	--	--	--	--	--	--	--	--
7/9/2003	--		449.49	30.00	38.00	26.40	423.09	3,900	170	<5.0	100	19	39	2.5	7.0
02/19/2004	--		449.49	30.00	38.00	23.85	425.64	--	--	--	--	--	--	--	--
08/04/2004	P		452.05	30.00	38.00	24.71	427.34	5,400	650	21	160	56	78	0.8	7.2
01/18/2005	--		452.05	30.00	38.00	20.86	431.19	--	--	--	--	--	--	--	--
07/15/2005	P		452.05	30.00	38.00	25.92	426.13	5,200	160	5.3	56	10	46	3.1	6.9
01/10/2006	--		452.05	30.00	38.00	19.25	432.80	--	--	--	--	--	--	--	--
7/21/2006	P		452.05	30.00	38.00	25.73	426.32	120	0.90	<0.50	<0.50	<0.50	<0.50	6.08	8.3
1/17/2007	--		452.05	30.00	38.00	28.70	423.35	--	--	--	--	--	--	--	--
7/18/2007	P		452.05	30.00	38.00	29.07	422.98	2,300	58	2.4	9.5	3.5	45	1.19	7.51
MW-3															
3/20/1995	--		450.28	32.00	40.00	22.19	428.09	94	<0.5	<0.5	<0.5	<0.5	--	--	--
6/2/1995	--		450.28	32.00	40.00	23.28	427.00	72	<0.5	<0.5	<0.5	<0.5	--	--	--
8/23/1995	--		450.28	32.00	40.00	26.55	423.73	98	<0.5	<0.5	<0.6	0.5	<3	--	--
12/4/1995	--		450.28	32.00	40.00	29.52	420.76	<50	<0.5	<0.5	<0.5	<0.5	--	--	--
2/20/1996	--		450.28	32.00	40.00	19.83	430.45	130	<0.5	<0.5	<0.5	<0.5	<3	--	--
5/15/1996	--		450.28	32.00	40.00	21.03	429.25	120	<0.5	<0.5	<0.5	<0.5	<0.5	--	--
8/13/1996	--		450.28	32.00	40.00	25.67	424.61	<50	<0.5	<0.5	<0.5	<0.5	<3	--	--
11/13/1996	--		450.28	32.00	40.00	21.57	428.71	<50	<0.5	<0.5	<0.5	<0.5	<3	--	--
3/26/1997	--		450.28	32.00	40.00	24.15	426.13	<50	1.1	<0.5	<0.5	<0.5	<3	--	--
5/15/1997	--		450.28	32.00	40.00	26.85	423.43	<50	<0.5	<0.5	<0.5	<0.5	<3	--	--
8/26/1997	--		450.28	32.00	40.00	30.07	420.21	<50	<0.5	<0.5	<0.5	<0.5	<3	--	--
11/5/1997	--		450.28	32.00	40.00	32.46	417.82	<50	<0.5	0.7	<0.5	<0.5	<3	--	--
2/18/1998	--		450.28	32.00	40.00	17.82	432.46	<50	<0.5	<0.5	<0.5	<0.5	<3	--	--

Table 1. Summary of Ground-Water Monitoring Data: Relative Water Elevations and Laboratory Analyses

Station #771, 899 Rincon Ave., Livermore, CA

Well and Sample Date	P/NP	Comments	TOC (feet msl)	Top of Screen (ft bgs)	Bottom of Screen (ft bgs)	DTW (feet bgs)	Water Level Elevation (feet msl)	Concentrations in (µg/L)						DO (mg/L)	pH
								GRO/TPHg	Benzene	Toluene	Ethyl-Benzene	Total Xylenes	MTBE		
MW-3 Cont.															
5/20/1998	--		450.28	32.00	40.00	21.41	428.87	<50	<0.5	<0.5	<0.5	<0.5	<3	--	--
7/30/1998	P		450.28	32.00	40.00	26.41	423.87	<50	<0.5	<0.5	<0.5	<0.5	<3	9.56	--
10/29/1998	P		450.28	32.00	40.00	31.33	418.95	<50	<0.5	<0.5	<0.5	<0.5	<3	1.0	--
3/16/1999	P		450.28	32.00	40.00	24.61	425.67	<50	<0.5	<0.5	<0.5	<0.5	<3	1.0	--
5/5/1999	P		450.28	32.00	40.00	25.75	424.53	140	<0.5	<0.5	0.6	<0.5	<3	4.43	--
8/26/1999	P		450.28	32.00	40.00	28.49	421.79	80	0.6	0.6	0.6	1	<3	1.69	--
12/3/1999	P		450.28	32.00	40.00	31.45	418.83	<50	<0.5	<0.5	<0.5	<1	<3	2.26	--
3/13/2000	P		450.28	32.00	40.00	22.18	428.10	<50	<0.5	<0.5	<0.5	<1	<3	4.41	--
6/20/2000	P		450.28	32.00	40.00	26.03	424.25	<50.0	<0.500	<0.500	<0.500	<0.500	<2.50	2.3	--
8/31/2000	--		450.28	32.00	40.00	28.75	421.53	--	--	--	--	--	--	--	--
2/9/2001	--		450.28	32.00	40.00	31.04	419.24	--	--	--	--	--	--	--	--
9/17/2001	--		450.28	32.00	40.00	29.04	421.24	--	--	--	--	--	--	--	--
1/21/2002	--		450.28	32.00	40.00	28.81	421.47	--	--	--	--	--	--	--	--
7/19/2002	--		450.28	32.00	40.00	28.92	421.36	--	--	--	--	--	--	--	--
1/15/2003	--		450.28	32.00	40.00	22.88	427.40	--	--	--	--	--	--	--	--
7/9/2003	--		450.28	32.00	40.00	28.00	422.28	--	--	--	--	--	--	--	--
02/19/2004	--		450.28	32.00	40.00	25.29	424.99	--	--	--	--	--	--	--	--
08/04/2004	--		452.75	32.00	40.00	27.40	425.35	--	--	--	--	--	--	--	--
01/18/2005	--		452.75	32.00	40.00	22.76	429.99	--	--	--	--	--	--	--	--
07/15/2005	--		452.75	32.00	40.00	25.95	426.80	--	--	--	--	--	--	--	--
01/10/2006	--		452.75	32.00	40.00	21.18	431.57	--	--	--	--	--	--	--	--
7/21/2006	--		452.75	32.00	40.00	25.73	427.02	--	--	--	--	--	--	--	--
1/17/2007	--		452.75	32.00	40.00	30.51	422.24	--	--	--	--	--	--	--	--
7/18/2007	--		452.75	32.00	40.00	29.53	423.22	--	--	--	--	--	--	--	--
MW-4															
3/20/1995	--		451.09	26.00	42.00	22.68	428.41	12,000	1,000	100	450	700	--	--	--
6/2/1995	--		451.09	26.00	42.00	24.41	426.68	9,000	850	56	380	430	--	--	--
8/23/1995	--		451.09	26.00	42.00	27.72	423.37	5,300	400	25	240	170	<100	--	--
12/4/1995	--		451.09	26.00	42.00	29.85	421.24	6,700	100	<10	90	38	--	--	--
2/20/1996	--		451.09	26.00	42.00	21.16	429.93	7,000	360	22	180	160	<70	--	--

Table 1. Summary of Ground-Water Monitoring Data: Relative Water Elevations and Laboratory Analyses

Station #771, 899 Rincon Ave., Livermore, CA

Well and Sample Date	P/NP	Comments	TOC (feet msl)	Top of Screen (ft bgs)	Bottom of Screen (ft bgs)	DTW (feet bgs)	Water Level Elevation (feet msl)	Concentrations in (µg/L)						DO (mg/L)	pH
								GRO/TPHg	Benzene	Toluene	Ethyl-Benzene	Total Xylenes	MTBE		
MW-4 Cont.															
5/15/1996	--		451.09	26.00	42.00	22.18	428.91	--	--	--	--	--	--	--	--
8/13/1996	--		451.09	26.00	42.00	26.20	424.89	--	--	--	--	--	--	--	--
11/13/1996	--		451.09	26.00	42.00	29.72	421.37	--	--	--	--	--	--	--	--
3/26/1997	--		451.09	26.00	42.00	21.86	429.23	8,900	390	33	200	250	<70	--	--
5/15/1997	--		451.09	26.00	42.00	26.92	424.17	--	--	--	--	--	--	--	--
8/26/1997	--		451.09	26.00	42.00	29.30	421.79	--	--	--	--	--	--	--	--
11/5/1997	--		451.09	26.00	42.00	32.14	418.95	--	--	--	--	--	--	--	--
2/18/1998	--		451.09	26.00	42.00	19.30	431.79	5,300	220	19	160	130	120	--	--
5/20/1998	--		451.09	26.00	42.00	22.40	428.69	--	--	--	--	--	--	--	--
7/30/1998	--		451.09	26.00	42.00	25.74	425.35	--	--	--	--	--	--	--	--
10/29/1998	--		451.09	26.00	42.00	31.26	419.83	--	--	--	--	--	--	--	--
3/16/1999	P		451.09	26.00	42.00	25.05	426.04	1,900	49	<5	43	<5	82	1.5	--
5/5/1999	--		451.09	26.00	42.00	26.15	424.94	--	--	--	--	--	--	--	--
8/26/1999	--		451.09	26.00	42.00	28.60	422.49	--	--	--	--	--	--	1.43	--
12/3/1999	--		451.09	26.00	42.00	31.53	419.56	--	--	--	--	--	--	--	--
3/13/2000	P		451.09	26.00	42.00	23.61	427.48	<50	<0.5	<0.5	<0.5	<1	<3	3.82	--
6/20/2000	--		451.09	26.00	42.00	26.38	424.71	--	--	--	--	--	--	0.4	--
8/31/2000	NP		451.09	26.00	42.00	29.55	421.54	<50.0	<0.500	<0.500	<0.500	<0.500	<2.50	1.04	--
2/9/2001	NP		451.09	26.00	42.00	30.30	420.79	<50.0	<0.500	<0.500	<0.500	<0.500	<2.50	1.39	--
9/17/2001	NP		451.09	26.00	42.00	29.90	421.19	3,400	51	<5.0	16	23	360	0.92	--
1/21/2002	NP		451.09	26.00	42.00	29.51	421.58	1,900	140	12	27	48	300	1.03	--
7/19/2002	NP	a	451.09	26.00	42.00	30.77	420.32	2,700	150	9.9	<5.0	<5.0	130	1.0	7.3
1/15/2003	--	a	451.09	26.00	42.00	23.56	427.53	4,800	150	5.3	28	46	150	1.3	7.0
7/9/2003	--		451.09	26.00	42.00	29.50	421.59	3,000	210	9.4	6	20	150	2.0	6.9
02/19/2004	P	c	451.09	26.00	42.00	26.35	424.74	4,800	270	11	25	19	180	1.8	6.2
08/04/2004	NP		453.80	26.00	42.00	26.48	427.32	4,200	410	13	49	59	300	0.7	6.7
01/18/2005	P		453.80	26.00	42.00	23.15	430.65	4,500	250	9.5	62	22	160	1.2	6.9
07/15/2005	NP		453.80	26.00	42.00	28.13	425.67	3,500	230	6.1	19	15	230	0.5	7.0
01/10/2006	P		453.80	26.00	42.00	21.49	432.31	5,500	250	7.6	37	25	190	1.3	7.1
7/21/2006	NP		453.80	26.00	42.00	28.88	424.92	66	0.60	<0.50	0.52	0.82	3.1	4.75	8.3

Table 1. Summary of Ground-Water Monitoring Data: Relative Water Elevations and Laboratory Analyses

Station #771, 899 Rincon Ave., Livermore, CA

Well and Sample Date	P/NP	Comments	TOC (feet msl)	Top of Screen (ft bgs)	Bottom of Screen (ft bgs)	DTW (feet bgs)	Water Level Elevation (feet msl)	Concentrations in (µg/L)						DO (mg/L)	pH
								GRO/TPHg	Benzene	Toluene	Ethyl-Benzene	Total Xylenes	MTBE		
MW-4 Cont.															
1/17/2007	NP		453.80	26.00	42.00	30.80	423.00	<50	<0.50	<0.50	<0.50	<0.50	11	6.19	8.03
7/18/2007	NP		453.80	26.00	42.00	32.00	421.80	2,400	140	6.8	1.3	4.1	74	5.03	7.12
MW-5															
3/20/1995	--		451.40	31.50	41.00	23.20	428.20	26,000	1,300	180	890	2,900	--	--	--
6/2/1995	--		451.40	31.50	41.00	24.80	426.60	39,000	940	160	740	1,900	--	--	--
8/23/1995	--		451.40	31.50	41.00	28.10	423.30	14,000	490	74	250	890	<300	--	--
12/4/1995	--		451.40	31.50	41.00	29.83	421.57	7,600	230	13	61	80	--	--	--
2/20/1996	--		451.40	31.50	41.00	21.63	429.77	4,300	220	12	45	130	<50	--	--
5/15/1996	--		451.40	31.50	41.00	22.87	428.53	2,200	380	17	58	84	<40	--	--
8/13/1996	--		451.40	31.50	41.00	26.48	424.92	1,700	150	16	24	35	47	--	--
11/13/1996	--		451.40	31.50	41.00	29.68	421.72	850	150	11	19	37	66	--	--
3/26/1997	--		451.40	31.50	41.00	25.14	426.26	2,400	440	21	79	210	68	--	--
5/15/1997	--		451.40	31.50	41.00	27.38	424.02	3,900	510	19	140	240	48	--	--
8/26/1997	--		451.40	31.50	41.00	29.89	421.51	76	4.9	<0.5	1.5	2	9	--	--
11/5/1997	--		451.40	31.50	41.00	32.57	418.83	63	0.8	<0.5	<0.5	1.2	34	--	--
2/18/1998	--		451.40	31.50	41.00	19.99	431.41	6,200	630	70	320	640	320	--	--
5/20/1998	--		451.40	31.50	41.00	23.21	428.19	2,300	340	21	110	140	62	--	--
7/30/1998	P		451.40	31.50	41.00	26.19	425.21	<50	0.8	<0.5	0.6	0.9	<3	8.83	--
10/29/1998	NP		451.40	31.50	41.00	31.92	419.48	<50	<0.5	<0.5	<0.5	<0.5	<3	2.0	--
3/16/1999	P		451.40	31.50	41.00	25.80	425.60	1,300	170	8	59	65	120	2.0	--
5/5/1999	P		451.40	31.50	41.00	27.09	424.31	320	31	1.1	13	13	19	12.09	--
8/26/1999	P		451.40	31.50	41.00	29.67	421.73	260	13	1.7	4.2	6.3	150	1.31	--
12/3/1999	--	d	451.40	31.50	41.00	--	--	--	--	--	--	--	--	--	--
3/13/2000	P		451.40	31.50	41.00	24.51	426.89	<50	<0.5	<0.5	<0.5	<1	<3	4.41	--
6/20/2000	P		451.40	31.50	41.00	27.37	424.03	60.8	4.84	<0.500	1.9	1.59	<2.50	5.3	--
8/31/2000	P		451.40	31.50	41.00	30.21	421.19	<50.0	1.18	<0.500	<0.500	<0.500	3.83	0.97	--
2/9/2001	--		451.40	31.50	41.00	30.19	421.21	--	--	--	--	--	--	--	--
9/17/2001	P		451.40	31.50	41.00	30.71	420.69	2,700	120	10	90	77	330	0.81	--
1/21/2002	--		451.40	31.50	41.00	30.40	421.00	--	--	--	--	--	--	--	--
7/19/2002	P	a	451.40	31.50	41.00	31.93	419.47	1,600	170	7	120	<5.0	180	1.7	7.2

Table 1. Summary of Ground-Water Monitoring Data: Relative Water Elevations and Laboratory Analyses

Station #771, 899 Rincon Ave., Livermore, CA

Well and Sample Date	P/NP	Comments	TOC (feet msl)	Top of Screen (ft bgs)	Bottom of Screen (ft bgs)	DTW (feet bgs)	Water Level Elevation (feet msl)	Concentrations in (µg/L)						DO (mg/L)	pH
								GRO/TPHg	Benzene	Toluene	Ethyl-Benzene	Total Xylenes	MTBE		
MW-5 Cont.															
1/15/2003	--		451.40	31.50	41.00	23.12	428.28	--	--	--	--	--	--	--	--
7/9/2003	--		451.40	31.50	41.00	30.95	420.45	2,000	160	5.7	67	27	260	1.5	6.9
02/19/2004	--		451.40	31.50	41.00	26.73	424.67	--	--	--	--	--	--	--	--
08/04/2004	P		453.52	31.50	41.00	26.61	426.91	2,100	250	5.3	73	22	250	2.7	7.0
01/18/2005	--		453.52	31.50	41.00	24.10	429.42	--	--	--	--	--	--	--	--
07/15/2005	P		453.52	31.50	41.00	29.27	424.25	1,600	61	<5.0	8.7	<5.0	270	2.1	6.9
01/10/2006	--		453.52	31.50	41.00	22.19	431.33	--	--	--	--	--	--	--	--
7/21/2006	P		453.52	31.50	41.00	30.36	423.16	2,100	29	<5.0	7.5	11	14	2.98	7.1
1/17/2007	--		453.52	31.50	41.00	31.77	421.75	--	--	--	--	--	--	--	--
7/18/2007	NP		453.52	31.50	41.00	33.42	420.10	470	36	0.84	0.97	2.2	110	1.73	7.50
MW-6															
3/20/1995	--		451.37	32.00	42.00	25.19	426.18	2,600	210	87	82	140	--	--	--
6/2/1995	--		451.37	32.00	42.00	25.75	425.62	1,600	55	7.9	40	26	--	--	--
8/23/1995	--		451.37	32.00	42.00	29.53	421.84	1,400	42	2.5	36	13	<20	--	--
12/4/1995	--		451.37	32.00	42.00	32.28	419.09	2,500	52	5.8	59	13	--	--	--
2/20/1996	--		451.37	32.00	42.00	22.27	429.10	2,500	120	16	73	12	<30	--	--
5/15/1996	--		451.37	32.00	42.00	23.86	427.51	2,000	71	6.4	47	25	<15	--	--
8/13/1996	--		451.37	32.00	42.00	28.55	422.82	3,800	91	8.2	69	25	<20	--	--
11/13/1996	--		451.37	32.00	42.00	32.04	419.33	1,900	55	3.3	55	8.5	16	--	--
3/26/1997	--		451.37	32.00	42.00	26.84	424.53	1,800	51	5	32	15	<30	--	--
5/15/1997	--		451.37	32.00	42.00	29.58	421.79	2,400	46	3	29	9	<12	--	--
8/26/1997	--		451.37	32.00	42.00	32.67	418.70	1,400	61	6	33	10	<12	--	--
11/5/1997	--		451.37	32.00	42.00	34.62	416.75	690	29	2.7	18	3.4	9	--	--
2/18/1998	--		451.37	32.00	42.00	20.09	431.28	1,800	74	5	24	12	19	--	--
5/20/1998	--		451.37	32.00	42.00	24.05	427.32	1,900	280	4	31	16	9	--	--
7/30/1998	P		451.37	32.00	42.00	28.72	422.65	2,300	110	7	36	20	<15	--	--
10/29/1998	P		451.37	32.00	42.00	32.77	418.60	2,500	14	13	17	12	<12	1.0	--
3/16/1999	P		451.37	32.00	42.00	26.45	424.92	1,200	65	4	27	13	18	0.5	--
5/5/1999	P		451.37	32.00	42.00	27.86	423.51	2,200	53	4	26	6	25	5.59	--
8/26/1999	P		451.37	32.00	42.00	30.49	420.88	1,100	11	6	10	4	13	2.35	--

Table 1. Summary of Ground-Water Monitoring Data: Relative Water Elevations and Laboratory Analyses

Station #771, 899 Rincon Ave., Livermore, CA

Well and Sample Date	P/NP	Comments	TOC (feet msl)	Top of Screen (ft bgs)	Bottom of Screen (ft bgs)	DTW (feet bgs)	Water Level Elevation (feet msl)	Concentrations in (µg/L)						DO (mg/L)	pH
								GRO/TPHg	Benzene	Toluene	Ethyl-Benzene	Total Xylenes	MTBE		
MW-6 Cont.															
12/3/1999	P		451.37	32.00	42.00	32.35	419.02	370	<0.5	<0.5	0.8	<1	4	2.36	--
3/13/2000	P		451.37	32.00	42.00	28.36	423.01	54	2.1	0.5	0.9	1.4	<3	4.22	--
6/20/2000	P		451.37	32.00	42.00	28.35	423.02	195	1.83	<0.500	0.528	<0.500	<2.50	3.5	--
8/31/2000	P		451.37	32.00	42.00	30.20	421.17	276	3.52	0.788	1.15	0.621	8.73	7.0	--
2/9/2001	--	b	451.37	32.00	42.00	--	--	222	4.49	2.73	0.579	0.523	57.1	--	--
2/9/2001	P		451.37	32.00	42.00	30.70	420.67	253	5.44	2.93	0.924	0.977	48.9	0.59	--
9/17/2001	P		451.37	32.00	42.00	30.94	420.43	<50	<0.50	<0.50	<0.50	<0.50	<2.5	2.79	--
9/17/2001	--	b	451.37	32.00	42.00	--	--	<50	<0.50	<0.50	<0.50	<0.50	<2.5	--	--
1/21/2002	P		451.37	32.00	42.00	30.55	420.82	<50	<0.50	<0.50	<0.50	<0.50	<5.0	1.9	--
7/19/2002	P	a	451.37	32.00	42.00	30.27	421.10	60	2	<0.50	<0.50	<0.50	<0.50	3.5	7.9
1/15/2003	--	a	451.37	32.00	42.00	22.86	428.51	83	9.1	<0.50	3.4	4.6	1	2.5	7.2
7/9/2003	P		451.37	32.00	42.00	29.41	421.96	110	<0.50	<0.50	<0.50	<0.50	0.98	2.6	7.1
02/19/2004	--		451.37	32.00	42.00	43.25	408.12	--	--	--	--	--	--	--	--
08/04/2004	P		453.83	32.00	42.00	27.71	426.12	540	36	3.8	17	24	5.2	3.5	7.1
01/18/2005	--		453.83	32.00	42.00	24.56	429.27	--	--	--	--	--	--	--	--
07/15/2005	P		453.83	32.00	42.00	27.61	426.22	4,600	210	44	150	670	32	3.5	7.1
01/10/2006	--		453.83	32.00	42.00	23.75	430.08	--	--	--	--	--	--	--	--
7/21/2006	P		453.83	32.00	42.00	27.96	425.87	260	<0.50	<0.50	<0.50	0.86	5.1	2.60	7.2
1/17/2007	--		453.83	32.00	42.00	30.57	423.26	--	--	--	--	--	--	--	--
7/18/2007	P		453.83	32.00	42.00	30.96	422.87	<50	<0.50	<0.50	<0.50	<0.50	<0.50	4.95	7.57
MW-7															
3/20/1995	--		450.33	30.00	40.00	22.07	428.26	31,000	2,300	400	620	2,900	--	--	--
6/2/1995	--		450.33	30.00	40.00	23.42	426.91	40,000	1,400	280	610	2,400	--	--	--
8/23/1995	--		450.33	30.00	40.00	27.13	423.20	25,000	1,400	200	600	1,600	350	--	--
12/4/1995	--		450.33	30.00	40.00	29.45	420.88	23,000	1,100	74	490	720	--	--	--
2/20/1996	--		450.33	30.00	40.00	20.25	430.08	39,000	1,200	140	640	1,800	<400	--	--
5/15/1996	--		450.33	30.00	40.00	21.38	428.95	--	--	--	--	--	--	--	--
8/13/1996	--		450.33	30.00	40.00	25.52	424.81	--	--	--	--	--	--	--	--
11/13/1996	--		450.33	30.00	40.00	29.38	420.95	--	--	--	--	--	--	--	--
3/26/1997	--		450.33	30.00	40.00	24.36	425.97	35,000	1,100	180	460	1,700	<300	--	--

Table 1. Summary of Ground-Water Monitoring Data: Relative Water Elevations and Laboratory Analyses

Station #771, 899 Rincon Ave., Livermore, CA

Well and Sample Date	P/NP	Comments	TOC (feet msl)	Top of Screen (ft bgs)	Bottom of Screen (ft bgs)	DTW (feet bgs)	Water Level Elevation (feet msl)	Concentrations in (µg/L)						DO (mg/L)	pH
								GRO/TPHg	Benzene	Toluene	Ethyl-Benzene	Total Xylenes	MTBE		
MW-7 Cont.															
5/15/1997	--		450.33	30.00	40.00	26.90	423.43	--	--	--	--	--	--	--	--
8/26/1997	--		450.33	30.00	40.00	30.21	420.12	--	--	--	--	--	--	--	--
11/5/1997	--		450.33	30.00	40.00	32.49	417.84	--	--	--	--	--	--	--	--
2/18/1998	--		450.33	30.00	40.00	18.10	432.23	19,000	1,100	120	460	1,700	240	--	--
5/20/1998	--		450.33	30.00	40.00	21.68	428.65	--	--	--	--	--	--	--	--
7/30/1998	--		450.33	30.00	40.00	26.07	424.26	--	--	--	--	--	--	--	--
10/29/1998	--		450.33	30.00	40.00	31.13	419.20	--	--	--	--	--	--	--	--
3/16/1999	P		450.33	30.00	40.00	24.45	425.88	8,600	430	51	200	680	<120	1.5	--
5/5/1999	--		450.33	30.00	40.00	25.84	424.49	--	--	--	--	--	--	--	--
8/26/1999	--		450.33	30.00	40.00	28.28	422.05	--	--	--	--	--	--	1.51	--
12/3/1999	--		450.33	30.00	40.00	31.57	418.76	--	--	--	--	--	--	--	--
3/13/2000	--	d	450.33	30.00	40.00	--	--	--	--	--	--	--	--	--	--
6/20/2000	--		450.33	30.00	40.00	25.91	424.42	--	--	--	--	--	--	5.4	--
8/31/2000	--		450.33	30.00	40.00	28.40	421.93	8,410	344	58.9	276	581	202	0.09	--
2/9/2001	--		450.33	30.00	40.00	30.04	420.29	2,030	203	12	17.9	49.4	128	1.55	--
9/17/2001	P		450.33	30.00	40.00	29.03	421.30	4,800	200	14	9.9	27	160	0.29	--
1/21/2002	--	b	450.33	30.00	40.00	--	--	2,600	280	17	41	50	97	--	--
1/21/2002	P		450.33	30.00	40.00	28.98	421.35	4,200	350	20	52	63	99	0.81	--
7/19/2002	P	a	450.33	30.00	40.00	28.70	421.63	5,700	630	31	330	160	64	0.7	7.3
1/15/2003	--	a	450.33	30.00	40.00	21.91	428.42	12,000	470	19	340	310	91	1.5	7.0
7/9/2003	P		450.33	30.00	40.00	27.88	422.45	6,700	590	23	280	92	110	1.0	6.9
02/19/2004	P	c	450.33	30.00	40.00	25.12	425.21	8,900	670	24	470	120	100	0.8	6.6
08/04/2004	P		452.70	30.00	40.00	25.92	426.78	9,100	930	29	460	130	140	0.6	7.2
01/18/2005	P		452.70	30.00	40.00	22.31	430.39	16,000	770	33	590	220	87	1.0	6.9
07/15/2005	P		452.70	30.00	40.00	27.20	425.50	12,000	1,000	38	490	220	150	1.5	6.9
01/10/2006	P		452.70	30.00	40.00	20.61	432.09	13,000	1,200	50	760	330	120	0.8	7.1
7/21/2006	P		452.70	30.00	40.00	28.10	424.60	8,000	110	<50	380	180	54	3.20	7.8
1/17/2007	P		452.70	30.00	40.00	29.70	423.00	5,600	16	<2.5	26	12	3.1	1.08	7.83
7/18/2007	P		452.70	30.00	40.00	29.73	422.97	2,400	140	2.8	9.1	7.3	67	4.86	7.67
MW-8															

Table 1. Summary of Ground-Water Monitoring Data: Relative Water Elevations and Laboratory Analyses

Station #771, 899 Rincon Ave., Livermore, CA

Well and Sample Date	P/NP	Comments	TOC (feet msl)	Top of Screen (ft bgs)	Bottom of Screen (ft bgs)	DTW (feet bgs)	Water Level Elevation (feet msl)	Concentrations in (µg/L)						DO (mg/L)	pH
								GRO/TPHg	Benzene	Toluene	Ethyl-Benzene	Total Xylenes	MTBE		
MW-8 Cont.															
3/20/1995	--		449.43	27.50	42.50	24.75	424.68	<50	<0.5	<0.5	<0.5	<0.5	<3	--	--
6/2/1995	--		449.43	27.50	42.50	24.95	424.48	--	--	--	--	--	<3	--	--
8/23/1995	--		449.43	27.50	42.50	30.94	418.49	<50	<0.5	<0.5	<0.5	<0.5	<3	--	--
12/4/1995	--		449.43	27.50	42.50	31.99	417.44	--	--	--	--	--	<3	--	--
2/20/1996	--		449.43	27.50	42.50	21.13	428.30	<50	<0.5	<0.5	<0.5	<0.5	<3	--	--
5/15/1996	--		449.43	27.50	42.50	21.96	427.47	--	--	--	--	--	<3	--	--
8/13/1996	--		449.43	27.50	42.50	30.20	419.23	<50	<0.5	<0.5	<0.5	<0.5	<3	--	--
11/13/1996	--		449.43	27.50	42.50	33.24	416.19	--	--	--	--	--	<3	--	--
3/26/1997	--		449.43	27.50	42.50	26.85	422.58	<50	<0.5	<0.5	<0.5	<0.5	<3	--	--
5/15/1997	--		449.43	27.50	42.50	29.69	419.74	--	--	--	--	--	<3	--	--
8/26/1997	--		449.43	27.50	42.50	34.00	415.43	<50	<0.5	<0.5	<0.5	<0.5	<3	--	--
11/5/1997	--		449.43	27.50	42.50	35.94	413.49	--	--	--	--	--	<3	--	--
2/18/1998	--		449.43	27.50	42.50	18.18	431.25	<50	0.6	0.6	<0.5	1.1	<3	--	--
5/20/1998	--		449.43	27.50	42.50	22.85	426.58	--	--	--	--	--	<3	--	--
7/30/1998	NP		449.43	27.50	42.50	30.31	419.12	<50	<0.5	<0.5	<0.5	<0.5	<3	8.21	--
10/29/1998	--		449.43	27.50	42.50	35.88	413.55	--	--	--	--	--	<3	--	--
3/16/1999	NP		449.43	27.50	42.50	28.50	420.93	<50	<0.5	<0.5	<0.5	<0.5	<3	1.0	--
5/5/1999	--		449.43	27.50	42.50	29.76	419.67	--	--	--	--	--	<3	--	--
8/26/1999	P		449.43	27.50	42.50	33.51	415.92	<50	<0.5	<0.5	<0.5	<0.5	<3	4.93	--
12/3/1999	--		449.43	27.50	42.50	35.83	413.60	--	--	--	--	--	<3	--	--
3/13/2000	P		449.43	27.50	42.50	26.12	423.31	<50	<0.5	<0.5	<0.5	<1	<3	2.81	--
6/20/2000	--		449.43	27.50	42.50	30.91	418.52	--	--	--	--	--	<3	5.8	--
8/31/2000	--		449.43	27.50	42.50	33.70	415.73	--	--	--	--	--	<3	--	--
2/9/2001	--		449.43	27.50	42.50	30.90	418.53	--	--	--	--	--	<3	--	--
9/17/2001	--		449.43	27.50	42.50	33.95	415.48	--	--	--	--	--	<3	--	--
1/21/2002	--		449.43	27.50	42.50	33.71	415.72	--	--	--	--	--	<3	--	--
7/19/2002	--		449.43	27.50	42.50	35.30	414.13	--	--	--	--	--	<3	--	--
1/15/2003	--		449.43	27.50	42.50	27.10	422.33	--	--	--	--	--	<3	--	--
7/9/2003	--		449.43	27.50	42.50	33.10	416.33	--	--	--	--	--	<3	--	--
02/19/2004	--		449.43	27.50	42.50	28.92	420.51	--	--	--	--	--	<3	--	--

Table 1. Summary of Ground-Water Monitoring Data: Relative Water Elevations and Laboratory Analyses

Station #771, 899 Rincon Ave., Livermore, CA

Well and Sample Date	P/NP	Comments	TOC (feet msl)	Top of Screen (ft bgs)	Bottom of Screen (ft bgs)	DTW (feet bgs)	Water Level Elevation (feet msl)	Concentrations in (µg/L)						DO (mg/L)	pH
								GRO/TPHg	Benzene	Toluene	Ethyl-Benzene	Total Xylenes	MTBE		
MW-8 Cont.															
08/04/2004	--		451.80	27.50	42.50	34.28	417.52	--	--	--	--	--	--	--	--
01/18/2005	--		451.80	27.50	42.50	26.76	425.04	--	--	--	--	--	--	--	--
07/15/2005	--		451.80	27.50	42.50	31.14	420.66	--	--	--	--	--	--	--	--
01/10/2006	--		451.80	27.50	42.50	22.88	428.92	--	--	--	--	--	--	--	--
7/21/2006	--		451.80	27.50	42.50	30.84	420.96	--	--	--	--	--	--	--	--
1/17/2007	--		451.80	27.50	42.50	33.20	418.60	--	--	--	--	--	--	--	--
7/18/2007	--		451.80	27.50	42.50	31.92	419.88	--	--	--	--	--	--	--	--
MW-9															
3/20/1995	--		449.21	29.50	39.50	19.11	430.10	<50	<0.5	<0.5	<0.5	<0.5	--	--	--
6/2/1995	--		449.21	29.50	39.50	21.23	427.98	--	--	--	--	--	--	--	--
8/23/1995	--		449.21	29.50	39.50	24.33	424.88	<50	<0.5	<0.5	<0.5	<0.5	<3	--	--
12/4/1995	--		449.21	29.50	39.50	27.90	421.31	--	--	--	--	--	--	--	--
2/20/1996	--		449.21	29.50	39.50	17.86	431.35	<50	<0.5	<0.5	<0.5	<0.5	<3	--	--
5/15/1996	--		449.21	29.50	39.50	18.69	430.52	--	--	--	--	--	--	--	--
8/13/1996	--		449.21	29.50	39.50	24.17	425.04	--	--	--	--	--	--	--	--
11/13/1996	--		449.21	29.50	39.50	28.01	421.20	--	--	--	--	--	--	--	--
3/26/1997	--		449.21	29.50	39.50	22.58	426.63	<50	<0.5	<0.5	<0.5	<0.5	<3	--	--
5/15/1997	--		449.21	29.50	39.50	25.12	424.09	--	--	--	--	--	--	--	--
8/26/1997	--		449.21	29.50	39.50	28.28	420.93	--	--	--	--	--	--	--	--
11/5/1997	--		449.21	29.50	39.50	31.18	418.03	--	--	--	--	--	--	--	--
2/18/1998	--		449.21	29.50	39.50	16.03	433.18	<50	0.6	0.5	<0.5	1	<3	--	--
5/20/1998	--		449.21	29.50	39.50	19.31	429.90	--	--	--	--	--	--	--	--
7/30/1998	--		449.21	29.50	39.50	24.90	424.31	--	--	--	--	--	--	--	--
10/29/1998	--		449.21	29.50	39.50	30.08	419.13	--	--	--	--	--	--	--	--
3/16/1999	P		449.21	29.50	39.50	22.68	426.53	<50	<0.5	<0.5	<0.5	<0.5	<3	1.0	--
5/5/1999	--		449.21	29.50	39.50	23.82	425.39	--	--	--	--	--	--	--	--
8/26/1999	--		449.21	29.50	39.50	26.57	422.64	--	--	--	--	--	--	5.08	--
12/3/1999	--	d	449.21	29.50	39.50	--	--	--	--	--	--	--	--	--	--
3/13/2000	P		449.21	29.50	39.50	25.62	423.59	<50	<0.5	<0.5	<0.5	<1	<3	5.43	--
6/20/2000	--		449.21	29.50	39.50	23.55	425.66	--	--	--	--	--	--	6.2	--

Table 1. Summary of Ground-Water Monitoring Data: Relative Water Elevations and Laboratory Analyses

Station #771, 899 Rincon Ave., Livermore, CA

Well and Sample Date	P/NP	Comments	TOC (feet msl)	Top of Screen (ft bgs)	Bottom of Screen (ft bgs)	DTW (feet bgs)	Water Level Elevation (feet msl)	Concentrations in (µg/L)						DO (mg/L)	pH
								GRO/TPHg	Benzene	Toluene	Ethyl-Benzene	Total Xylenes	MTBE		
MW-9 Cont.															
8/31/2000	--		449.21	29.50	39.50	27.39	421.82	--	--	--	--	--	--	--	--
2/9/2001	--		449.21	29.50	39.50	28.65	420.56	--	--	--	--	--	--	--	--
9/17/2001	--		449.21	29.50	39.50	27.51	421.70	--	--	--	--	--	--	--	--
1/21/2002	--		449.21	29.50	39.50	27.09	422.12	--	--	--	--	--	--	--	--
7/19/2002	--		449.21	29.50	39.50	27.06	422.15	--	--	--	--	--	--	--	--
1/15/2003	--		449.21	29.50	39.50	21.78	427.43	--	--	--	--	--	--	--	--
7/9/2003	--		449.21	29.50	39.50	26.18	423.03	--	--	--	--	--	--	--	--
02/19/2004	--		449.21	29.50	39.50	23.45	425.76	--	--	--	--	--	--	--	--
08/04/2004	--		451.63	29.50	39.50	29.24	422.39	--	--	--	--	--	--	--	--
01/18/2005	--		451.63	29.50	39.50	20.64	430.99	--	--	--	--	--	--	--	--
07/15/2005	--		451.63	29.50	39.50	25.72	425.91	--	--	--	--	--	--	--	--
01/10/2006	--		451.63	29.50	39.50	18.86	432.77	--	--	--	--	--	--	--	--
7/21/2006	--		451.63	29.50	39.50	25.58	426.05	--	--	--	--	--	--	--	--
1/17/2007	--		451.63	29.50	39.50	29.11	422.52	--	--	--	--	--	--	--	--
7/18/2007	--	d	451.63	29.50	39.50	--	--	--	--	--	--	--	--	--	--
MW-10															
3/20/1995	--		449.22	29.00	37.00	20.96	428.26	--	--	--	--	--	--	--	--
6/2/1995	--		449.22	29.00	37.00	22.15	427.07	--	--	--	--	--	--	--	--
8/23/1995	--		449.22	29.00	37.00	24.47	424.75	<50	<0.5	<0.5	<0.5	<0.5	<3	--	--
12/4/1995	--		449.22	29.00	37.00	26.97	422.25	--	--	--	--	--	--	--	--
2/20/1996	--		449.22	29.00	37.00	18.40	430.82	<50	<0.5	<0.5	<0.5	<0.5	<3	--	--
5/15/1996	--	d	449.22	29.00	37.00	--	--	--	--	--	--	--	--	--	--
8/13/1996	--		449.22	29.00	37.00	23.70	425.52	--	--	--	--	--	--	--	--
11/13/1996	--		449.22	29.00	37.00	27.15	422.07	--	--	--	--	--	--	--	--
3/26/1997	--		449.22	29.00	37.00	22.23	426.99	<50	<0.5	<0.5	<0.5	<0.5	<3	--	--
5/15/1997	--		449.22	29.00	37.00	24.57	424.65	--	--	--	--	--	--	--	--
8/26/1997	--		449.22	29.00	37.00	27.62	421.60	--	--	--	--	--	--	--	--
11/5/1997	--		449.22	29.00	37.00	30.79	418.43	--	--	--	--	--	--	--	--
2/18/1998	--	d	449.22	29.00	37.00	--	--	--	--	--	--	--	--	--	--
5/20/1998	--		449.22	29.00	37.00	--	--	--	--	--	--	--	--	--	--

Table 1. Summary of Ground-Water Monitoring Data: Relative Water Elevations and Laboratory Analyses

Station #771, 899 Rincon Ave., Livermore, CA

Well and Sample Date	P/NP	Comments	TOC (feet msl)	Top of Screen (ft bgs)	Bottom of Screen (ft bgs)	DTW (feet bgs)	Water Level Elevation (feet msl)	Concentrations in (µg/L)						DO (mg/L)	pH
								GRO/TPHg	Benzene	Toluene	Ethyl-Benzene	Total Xylenes	MTBE		
MW-10 Cont.															
7/30/1998	--		449.22	29.00	37.00	23.90	425.32	--	--	--	--	--	--	--	--
10/29/1998	--		449.22	29.00	37.00	30.55	418.67	--	--	--	--	--	--	--	--
3/16/1999	P		449.22	29.00	37.00	23.05	426.17	<50	<0.5	<0.5	<0.5	<0.5	<3	1.0	--
5/5/1999	--		449.22	29.00	37.00	24.00	425.22	--	--	--	--	--	--	--	--
8/26/1999	--		449.22	29.00	37.00	26.50	422.72	--	--	--	--	--	--	5.15	--
12/3/1999	--		449.22	29.00	37.00	30.80	418.42	--	--	--	--	--	--	--	--
3/13/2000	--	d	449.22	29.00	37.00	26.21	423.01	--	--	--	--	--	--	--	--
6/20/2000	--		449.22	29.00	37.00	23.52	425.70	--	--	--	--	--	--	5.5	--
8/31/2000	--		449.22	29.00	37.00	27.52	421.70	--	--	--	--	--	--	--	--
2/9/2001	--		449.22	29.00	37.00	28.71	420.51	--	--	--	--	--	--	--	--
9/17/2001	--		449.22	29.00	37.00	27.94	421.28	--	--	--	--	--	--	--	--
1/21/2002	--		449.22	29.00	37.00	27.44	421.78	--	--	--	--	--	--	--	--
7/19/2002	--		449.22	29.00	37.00	27.80	421.42	--	--	--	--	--	--	--	--
1/15/2003	--		449.22	29.00	37.00	23.09	426.13	--	--	--	--	--	--	--	--
7/9/2003	--		449.22	29.00	37.00	26.87	422.35	--	--	--	--	--	--	--	--
02/19/2004	--		449.22	29.00	37.00	23.39	425.83	--	--	--	--	--	--	--	--
01/18/2005	--		451.65	29.00	37.00	21.40	430.25	--	--	--	--	--	--	--	--
07/15/2005	--		451.65	29.00	37.00	25.37	426.28	--	--	--	--	--	--	--	--
01/10/2006	--		451.65	29.00	37.00	19.81	431.84	--	--	--	--	--	--	--	--
7/21/2006	--		451.65	29.00	37.00	25.16	426.49	--	--	--	--	--	--	--	--
1/17/2007	--		451.65	29.00	37.00	28.95	422.70	--	--	--	--	--	--	--	--
7/18/2007	--	d	451.65	29.00	37.00	--	--	--	--	--	--	--	--	--	--
MW-11															
3/20/1995	--		448.02	29.00	39.00	25.02	423.00	<50	<0.5	<0.5	<0.5	<0.5	--	--	--
6/2/1995	--		448.02	29.00	39.00	23.82	424.20	--	--	--	--	--	--	--	--
8/23/1995	--		448.02	29.00	39.00	30.15	417.87	<50	<0.5	<0.5	<0.5	<0.5	<3	--	--
12/4/1995	--		448.02	29.00	39.00	31.63	416.39	--	--	--	--	--	--	--	--
2/20/1996	--		448.02	29.00	39.00	20.94	427.08	<50	<0.5	<0.5	<0.5	<0.5	<3	--	--
5/15/1996	--		448.02	29.00	39.00	23.03	424.99	--	--	--	--	--	--	--	--
8/13/1996	--		448.02	29.00	39.00	29.19	418.83	<50	<0.5	<0.5	<0.5	<0.5	<3	--	--

Table 1. Summary of Ground-Water Monitoring Data: Relative Water Elevations and Laboratory Analyses

Station #771, 899 Rincon Ave., Livermore, CA

Well and Sample Date	P/NP	Comments	TOC (feet msl)	Top of Screen (ft bgs)	Bottom of Screen (ft bgs)	DTW (feet bgs)	Water Level Elevation (feet msl)	Concentrations in (µg/L)						DO (mg/L)	pH
								GRO/TPHg	Benzene	Toluene	Ethyl-Benzene	Total Xylenes	MTBE		
MW-11 Cont.															
11/13/1996	--		448.02	29.00	39.00	31.96	416.06	--	--	--	--	--	--	--	--
3/26/1997	--		448.02	29.00	39.00	26.61	421.41	<50	<0.5	<0.5	<0.5	<0.5	<3	--	--
5/15/1997	--		448.02	29.00	39.00	29.39	418.63	--	--	--	--	--	--	--	--
8/26/1997	--		448.02	29.00	39.00	33.47	414.55	<50	<0.5	<0.5	<0.5	<0.5	<3	--	--
11/5/1997	--		448.02	29.00	39.00	35.12	412.90	--	--	--	--	--	--	--	--
2/18/1998	--		448.02	29.00	39.00	18.03	429.99	<50	<0.5	<0.5	<0.5	1	<3	--	--
5/20/1998	--		448.02	29.00	39.00	23.00	425.02	--	--	--	--	--	--	--	--
7/30/1998	P		448.02	29.00	39.00	29.30	418.72	<50	<0.5	<0.5	<0.5	<0.5	<3	5.59	--
10/29/1998	--		448.02	29.00	39.00	34.47	413.55	--	--	--	--	--	--	--	--
3/16/1999	P		448.02	29.00	39.00	27.88	420.14	<50	<0.5	<0.5	<0.5	<0.5	<3	1.0	--
5/5/1999	--		448.02	29.00	39.00	26.85	421.17	--	--	--	--	--	--	--	--
8/26/1999	P		448.02	29.00	39.00	32.74	415.28	<50	<0.5	<0.5	<0.5	<0.5	<3	4.59	--
12/3/1999	--		448.02	29.00	39.00	34.70	413.32	--	--	--	--	--	--	--	--
3/13/2000	P		448.02	29.00	39.00	25.94	422.08	<50	<0.5	<0.5	<0.5	<1	<3	3.21	--
6/20/2000	--		448.02	29.00	39.00	30.40	417.62	--	--	--	--	--	--	3.3	--
8/31/2000	--	b	448.02	29.00	39.00	--	--	<50.0	<0.500	<0.500	<0.500	<0.500	<2.50	--	--
8/31/2000	NP		448.02	29.00	39.00	32.68	415.34	<50.0	<0.500	<0.500	<0.500	<0.500	<2.50	0.4	--
2/9/2001	--		448.02	29.00	39.00	31.17	416.85	--	--	--	--	--	--	--	--
9/17/2001	NP		448.02	29.00	39.00	32.98	415.04	<50	<0.50	<0.50	<0.50	<0.50	<2.5	0.62	--
1/21/2002	--		448.02	29.00	39.00	31.05	416.97	--	--	--	--	--	--	--	--
7/19/2002	P		448.02	29.00	39.00	31.67	416.35	<50	<0.50	<0.50	<0.50	<0.50	<0.50	3.7	7.7
1/15/2003	--		448.02	29.00	39.00	23.75	424.27	--	--	--	--	--	--	--	--
7/9/2003	P		448.02	29.00	39.00	31.06	416.96	<50	<0.50	<0.50	<0.50	<0.50	<0.50	2.4	6.6
02/19/2004	--		448.02	29.00	39.00	27.21	420.81	--	--	--	--	--	--	--	--
08/04/2004	P		450.41	29.00	39.00	31.71	418.70	<50	<0.50	<0.50	<0.50	<0.50	<0.50	3.3	7.1
01/18/2005	--		450.41	29.00	39.00	24.80	425.61	--	--	--	--	--	--	--	--
07/15/2005	P		450.41	29.00	39.00	29.15	421.26	<50	<0.50	<0.50	<0.50	<0.50	<0.50	2.7	7.1
01/10/2006	--		450.41	29.00	39.00	20.87	429.54	--	--	--	--	--	--	--	--
7/21/2006	P		450.41	29.00	39.00	29.30	421.11	<50	<0.50	<0.50	<0.50	<0.50	<0.50	2.7	7.2
1/17/2007	--		450.41	29.00	39.00	31.59	418.82	--	--	--	--	--	--	--	--

Table 1. Summary of Ground-Water Monitoring Data: Relative Water Elevations and Laboratory Analyses

Station #771, 899 Rincon Ave., Livermore, CA

Well and Sample Date	P/NP	Comments	TOC (feet msl)	Top of Screen (ft bgs)	Bottom of Screen (ft bgs)	DTW (feet bgs)	Water Level Elevation (feet msl)	Concentrations in (µg/L)						DO (mg/L)	pH
								GRO/TPHg	Benzene	Toluene	Ethyl-Benzene	Total Xylenes	MTBE		
MW-11 Cont.															
7/18/2007	NP		450.41	29.00	39.00	29.22	421.19	<50	<0.50	<0.50	<0.50	<0.50	<0.50	5.35	7.12
RW-1															
3/20/1995	--		451.67	25.50	40.50	23.76	427.91	15,000	1,000	140	310	950	--	--	--
6/2/1995	--		451.67	25.50	40.50	25.12	426.55	12,000	1,300	280	420	1,100	--	--	--
8/23/1995	--		451.67	25.50	40.50	28.80	422.87	8,200	520	190	240	610	<50	--	--
12/4/1995	--		451.67	25.50	40.50	31.15	420.52	2,600	140	59	83	210	--	--	--
2/20/1996	--		451.67	25.50	40.50	21.45	430.22	6,300	410	160	180	650	<40	--	--
5/15/1996	--		451.67	25.50	40.50	22.97	428.70	--	--	--	--	--	--	--	--
8/13/1996	--		451.67	25.50	40.50	24.74	426.93	--	--	--	--	--	--	--	--
11/13/1996	--		451.67	25.50	40.50	30.69	420.98	--	--	--	--	--	--	--	--
3/26/1997	--		451.67	25.50	40.50	25.69	425.98	500	57	3	6.4	18	54	--	--
5/15/1997	--		451.67	25.50	40.50	28.19	423.48	--	--	--	--	--	--	--	--
8/26/1997	--		451.67	25.50	40.50	31.21	420.46	--	--	--	--	--	--	--	--
11/5/1997	--		451.67	25.50	40.50	33.67	418.00	--	--	--	--	--	--	--	--
2/18/1998	--		451.67	25.50	40.50	20.14	431.53	9,400	200	70	190	710	<60	--	--
5/20/1998	--		451.67	25.50	40.50	23.43	428.24	--	--	--	--	--	--	--	--
7/30/1998	--		451.67	25.50	40.50	27.42	424.25	--	--	--	--	--	--	--	--
10/29/1998	--		451.67	25.50	40.50	32.47	419.20	--	--	--	--	--	--	--	--
3/16/1999	NP		451.67	25.50	40.50	25.45	426.22	1,100	140	19	45	83	530	1.0	--
5/5/1999	--		451.67	25.50	40.50	27.23	424.44	--	--	--	--	--	--	--	--
8/26/1999	--		451.67	25.50	40.50	29.98	421.69	--	--	--	--	--	--	1.39	--
12/3/1999	--		451.67	25.50	40.50	32.38	419.29	--	--	--	--	--	--	--	--
3/13/2000	NP		451.67	25.50	40.50	25.53	426.14	1,100	130	3.5	0.7	95	230	4.43	--
6/20/2000	--		451.67	25.50	40.50	28.31	423.36	--	--	--	--	--	--	1.9	--
8/31/2000	NP		451.67	25.50	40.50	30.61	421.06	<50.0	<0.500	<0.500	<0.500	<0.500	82.5	3.21	--
2/9/2001	NP		451.67	25.50	40.50	31.14	420.53	<50.0	<0.500	<0.500	<0.500	<0.500	<2.50	0.84	--
9/17/2001	NP		451.67	25.50	40.50	31.70	419.97	<50	<0.50	<0.50	<0.50	<0.50	<2.5	1.51	--
1/21/2002	NP		451.67	25.50	40.50	30.15	421.52	<50	7.7	<0.50	<0.50	1.5	18	0.63	--
7/19/2002	NP		451.67	25.50	40.50	31.15	420.52	<50	<0.50	<0.50	<0.50	<0.50	13	1.4	6.6
1/15/2003	--	a	451.67	25.50	40.50	22.20	429.47	860	9	1.6	17	42	1.5	2.8	7.2

Table I. Summary of Ground-Water Monitoring Data: Relative Water Elevations and Laboratory Analyses

Station #771, 899 Rincon Ave., Livermore, CA

Well and Sample Date	P/NP	Comments	TOC (feet msl)	Top of Screen (ft bgs)	Bottom of Screen (ft bgs)	DTW (feet bgs)	Water Level Elevation (feet msl)	Concentrations in (µg/L)						DO (mg/L)	pH
								GRO/TPHg	Benzene	Toluene	Ethyl-Benzene	Total Xylenes	MTBE		
RW-1 Cont.															
7/9/2003	--		451.67	25.50	40.50	29.56	422.11	<50	<0.50	<0.50	<0.50	<0.50	<0.50	1.8	7.1
02/19/2004	NP	c	451.67	25.50	40.50	23.53	428.14	<50	<0.50	<0.50	<0.50	<0.50	<0.50	2.4	6.7
08/04/2004	P		454.11	25.50	40.50	22.45	431.66	600	<0.50	<0.50	3.3	3.4	<0.50	4.4	7.2
01/18/2005	P		454.11	25.50	40.50	23.57	430.54	1,400	8.0	1.9	22	68	<0.50	3.6	6.9
07/15/2005	NP		454.11	25.50	40.50	29.02	425.09	<50	<0.50	<0.50	<0.50	<0.50	2.0	1.1	7.8
01/10/2006	P		454.11	25.50	40.50	21.88	432.23	480	4.3	0.67	8.3	18	0.54	4.4	7.1
7/21/2006	--	d	454.11	25.50	40.50	--	--	--	--	--	--	--	--	--	--
1/17/2007	P		454.11	25.50	40.50	31.48	422.63	6,900	17	2.8	22	31	2.6	4.08	7.74
7/18/2007	NP		454.11	25.50	40.50	32.45	421.66	<50	<0.50	<0.50	<0.50	<0.50	<0.50	1.33	7.48
VW-1															
8/31/2000	P		--	18.50	28.50	20.61	--	<50.0	<0.500	<0.500	<0.500	<0.500	<2.50	10.08	--
2/9/2001	P		--	18.50	28.50	22.10	--	<50.0	<0.500	<0.500	<0.500	<0.500	<2.50	0.53	--
9/17/2001	P		--	18.50	28.50	21.99	--	<50	<0.50	<0.50	<0.50	<0.50	<2.5	6.59	--
1/21/2002	P		--	18.50	28.50	21.50	--	<50	<0.50	<0.50	<0.50	<0.50	<5.0	0.7	--
7/19/2002	P		--	18.50	28.50	22.42	--	<50	<0.50	<0.50	<0.50	<0.50	<0.50	4.9	7.1
1/15/2003	--		--	18.50	28.50	22.59	--	<50	<0.50	<0.50	0.63	1.7	<0.50	5.4	7.2
7/9/2003	--		--	18.50	28.50	22.50	--	<50	<0.50	<0.50	<0.50	0.61	<0.50	2.0	7.0
02/19/2004	--		--	18.50	28.50	21.04	--	--	--	--	--	--	--	--	--
08/04/2004	P		453.29	18.50	28.50	20.48	432.81	<50	<0.50	<0.50	<0.50	<0.50	<0.50	5.7	7.0
01/18/2005	--		453.29	18.50	28.50	21.72	431.57	--	--	--	--	--	--	--	--
07/15/2005	P		453.29	18.50	28.50	22.50	430.79	<50	<0.50	<0.50	<0.50	<0.50	<0.50	5.1	7.4
01/10/2006	--		453.29	18.50	28.50	20.17	433.12	--	--	--	--	--	--	--	--
7/21/2006	P	e	453.29	18.50	28.50	22.50	430.79	220	<0.50	<0.50	<0.50	<0.50	<0.50	5.91	7.3
1/17/2007	--		453.29	18.50	28.50	21.67	431.62	--	--	--	--	--	--	--	--
7/18/2007	NP		453.29	18.50	28.50	23.58	429.71	<50	<0.50	<0.50	<0.50	<0.50	<0.50	6.45	8.52

SYMBOLS AND ABBREVIATIONS:

--/- = Not analyzed/applicable/sampled/measured
< = Not detected at or above specified laboratory reporting limit
DO = Dissolved oxygen
DTW = Depth to water in ft bgs
ft bgs = Feet below ground surface
ft MSL = Feet above mean sea level
GRO = Gasoline range organics, range C4-C12
GWE = Groundwater elevation in ft MSL
g/L = Micrograms per liter
mg/L = Milligrams per liter
MTBE = Methyl tert-butyl ether
NP = Not purged before sampling
P = Purged before sampling
TPH-g = Total petroleum hydrocarbons as gasoline
TOC = Top of casing elevation in ft MSL

FOOTNOTES:

a = Chromatogram Pattern: Gasoline C6-C10
b = Duplicate sample
c = GRO analyzed by EPA Method 8015B modified
d = Well inaccessible
e = Hydrocarbon result partly due to individ. peak(s) in quant. range.

NOTES:

For previous historical GWE and analytical data please refer to Fourth Quarter 1995 Groundwater Monitoring Program Results and Remediation System Performance Evaluation Report, ARCO Service Station 771, Livermore, California, (EMCON, March 1, 1996).

Please note that beginning in the fourth quarter 2003, the laboratory modified the reported analyte list. TPH-g was changed to GRO. The resulting data may be impacted by the potential inclusion of non-TPH-g analytes within the requested fuel range resulting in a higher concentration being reported.

All analytes unless otherwise notes utilized EPA Method 8260B, EPA method 8015B modified prior to 1/15/03, and EPA method 8020 prior to 12/03/99.

Site wells were resurveyed to NAVD '88 datum on March 8, 2004.

Top of screen and bottom of screen depths for MW-3 and MW-6 are estimated from cross-sections.

Note: The data within this table collected prior to April 2006 was provided to Broadbent & Associates, Inc. by Atlantic Richfield Company and their previous consultants. Broadbent & Associates, Inc. has not verified the accuracy of this information.

Table 2. Summary of Fuel Additives Analytical Data
Station #771, 899 Rincon Ave., Livermore, CA

Well and Sample Date	Concentrations in (µg/L)								Comments	
	Ethanol	TBA	MTBE	DIPE	ETBE	TAME	1,2-DCA	EDB		
MW-1										
02/19/2004	--	--	--	--	--	--	--	--	--	
08/04/2004	--	--	--	--	--	--	--	--	--	
01/18/2005	--	--	--	--	--	--	--	--	--	
07/15/2005	--	--	--	--	--	--	--	--	--	
01/10/2006	--	--	--	--	--	--	--	--	--	
MW-2										
7/9/2003	<1,000	<200	39	<5.0	<5.0	<5.0	<5.0	<5.0	<5.0	
02/19/2004	--	--	--	--	--	--	--	--	--	
08/04/2004	<2,000	<400	78	<10	<10	<10	<10	<10	<10	
01/18/2005	--	--	--	--	--	--	--	--	--	
07/15/2005	<500	120	46	<2.5	<2.5	<2.5	<2.5	<2.5	<2.5	
01/10/2006	--	--	--	--	--	--	--	--	--	
7/21/2006	<300	<20	<0.50	<0.50	<0.50	<0.50	<0.50	<0.50	<0.50	
7/18/2007	<600	89	45	<1.0	<1.0	<1.0	<1.0	<1.0	<1.0	
MW-3										
02/19/2004	--	--	--	--	--	--	--	--	--	
08/04/2004	--	--	--	--	--	--	--	--	--	
01/18/2005	--	--	--	--	--	--	--	--	--	
07/15/2005	--	--	--	--	--	--	--	--	--	
01/10/2006	--	--	--	--	--	--	--	--	--	
MW-4										
7/9/2003	<1,000	750	150	<5.0	<5.0	<5.0	<5.0	<5.0	<5.0	
02/19/2004	<1,000	630	180	<10	<10	<10	<5.0	<5.0	<5.0	
08/04/2004	<2,000	1,300	300	<10	<10	<10	<10	<10	<10	
01/18/2005	<1,000	630	160	<5.0	<5.0	<5.0	<5.0	<5.0	<5.0	
07/15/2005	<1,000	850	230	<5.0	<5.0	<5.0	<5.0	<5.0	<5.0	
01/10/2006	<1,500	810	190	<2.5	<2.5	<2.5	<2.5	<2.5	<2.5	
7/21/2006	<300	35	3.1	<0.50	<0.50	<0.50	<0.50	<0.50	<0.50	
1/17/2007	<300	<20	11	<0.50	<0.50	<0.50	<0.50	<0.50	<0.50	
7/18/2007	<300	830	74	<0.50	<0.50	<0.50	0.76	<0.50	<0.50	

Table 2. Summary of Fuel Additives Analytical Data
Station #771, 899 Rincon Ave., Livermore, CA

Well and Sample Date	Concentrations in (µg/L)								Comments
	Ethanol	TBA	MTBE	DIPE	ETBE	TAME	1,2-DCA	EDB	
MW-5									
7/9/2003	<1,000	1,100	260	<5.0	<5.0	<5.0	<5.0	<5.0	
02/19/2004	--	--	--	--	--	--	--	--	
08/04/2004	<1,000	850	250	<5.0	<5.0	<5.0	<5.0	<5.0	
01/18/2005	--	--	--	--	--	--	--	--	
07/15/2005	<1,000	720	270	<5.0	<5.0	<5.0	<5.0	<5.0	
01/10/2006	--	--	--	--	--	--	--	--	
7/21/2006	<3,000	<200	14	<5.0	<5.0	<5.0	<5.0	<5.0	
7/18/2007	<300	260	110	<0.50	<0.50	<0.50	<0.50	<0.50	
MW-6									
7/9/2003	<100	<20	0.98	<0.50	<0.50	<0.50	<0.50	<0.50	
02/19/2004	--	--	--	--	--	--	--	--	
08/04/2004	<100	<20	5.2	<0.50	<0.50	<0.50	<0.50	<0.50	
01/18/2005	--	--	--	--	--	--	--	--	
07/15/2005	<500	110	32	<2.5	<2.5	<2.5	<2.5	<2.5	
01/10/2006	--	--	--	--	--	--	--	--	
7/21/2006	<300	<20	5.1	<0.50	<0.50	<0.50	<0.50	<0.50	
7/18/2007	<300	<20	<0.50	<0.50	<0.50	<0.50	<0.50	<0.50	
MW-7									
7/9/2003	<1,000	350	110	<5.0	<5.0	<5.0	<5.0	<5.0	
02/19/2004	<1,000	420	100	<10	<10	<10	<5.0	<5.0	
08/04/2004	<5,000	<1,000	140	<25	<25	<25	<25	<25	
01/18/2005	<1,000	260	87	<5.0	<5.0	<5.0	<5.0	<5.0	a
07/15/2005	<5,000	<1,000	150	<25	<25	<25	<25	<25	
01/10/2006	<30,000	<2,000	120	<50	<50	<50	<50	<50	
7/21/2006	<30,000	<2,000	54	<50	<50	<50	<50	<50	
1/17/2007	<1,500	<100	3.1	<2.5	<2.5	<2.5	<2.5	<2.5	
7/18/2007	<600	220	67	<1.0	<1.0	<1.0	<1.0	<1.0	
MW-8									
02/19/2004	--	--	--	--	--	--	--	--	
08/04/2004	--	--	--	--	--	--	--	--	

Table 2. Summary of Fuel Additives Analytical Data
Station #771, 899 Rincon Ave., Livermore, CA

Well and Sample Date	Concentrations in (µg/L)								Comments
	Ethanol	TBA	MTBE	DIPE	ETBE	TAME	1,2-DCA	EDB	
MW-8 Cont.									
01/18/2005	--	--	--	--	--	--	--	--	
07/15/2005	--	--	--	--	--	--	--	--	
01/10/2006	--	--	--	--	--	--	--	--	
MW-9									
02/19/2004	--	--	--	--	--	--	--	--	
08/04/2004	--	--	--	--	--	--	--	--	
01/18/2005	--	--	--	--	--	--	--	--	
07/15/2005	--	--	--	--	--	--	--	--	
01/10/2006	--	--	--	--	--	--	--	--	
MW-10									
02/19/2004	--	--	--	--	--	--	--	--	
01/18/2005	--	--	--	--	--	--	--	--	
07/15/2005	--	--	--	--	--	--	--	--	
01/10/2006	--	--	--	--	--	--	--	--	
MW-11									
7/9/2003	<100	<20	<0.50	<0.50	<0.50	<0.50	<0.50	<0.50	
02/19/2004	--	--	--	--	--	--	--	--	
08/04/2004	<100	<20	<0.50	<0.50	<0.50	<0.50	<0.50	<0.50	
01/18/2005	--	--	--	--	--	--	--	--	
07/15/2005	<100	<20	<0.50	<0.50	<0.50	<0.50	<0.50	<0.50	
01/10/2006	--	--	--	--	--	--	--	--	
7/21/2006	<300	<20	<0.50	<0.50	<0.50	<0.50	<0.50	<0.50	
7/18/2007	<300	<20	<0.50	<0.50	<0.50	<0.50	<0.50	<0.50	
RW-1									
7/9/2003	<100	<20	<0.50	<0.50	<0.50	<0.50	<0.50	<0.50	
02/19/2004	<100	<20	<0.50	<1.0	<1.0	<1.0	<0.50	<0.50	
08/04/2004	<100	<20	<0.50	<0.50	<0.50	<0.50	<0.50	<0.50	
01/18/2005	<100	<20	<0.50	<0.50	<0.50	<0.50	<0.50	<0.50	
07/15/2005	<100	<20	2.0	<0.50	<0.50	<0.50	<0.50	<0.50	a

Table 2. Summary of Fuel Additives Analytical Data
Station #771, 899 Rincon Ave., Livermore, CA

Well and Sample Date	Concentrations in (µg/L)								Comments
	Ethanol	TBA	MTBE	DIPE	ETBE	TAME	1,2-DCA	EDB	
RW-1 Cont.									
01/10/2006	<300	<20	0.54	<0.50	<0.50	<0.50	<0.50	<0.50	
1/17/2007	<1,500	<100	2.6	<2.5	<2.5	<2.5	<2.5	<2.5	
7/18/2007	<300	<20	<0.50	<0.50	<0.50	<0.50	<0.50	<0.50	
VW-1									
7/9/2003	<100	<20	<0.50	<0.50	<0.50	<0.50	<0.50	<0.50	
02/19/2004	--	--	--	--	--	--	--	--	
08/04/2004	<100	<20	<0.50	<0.50	<0.50	<0.50	<0.50	<0.50	
01/18/2005	--	--	--	--	--	--	--	--	
07/15/2005	<100	<20	<0.50	<0.50	<0.50	<0.50	<0.50	<0.50	
01/10/2006	--	--	--	--	--	--	--	--	
7/21/2006	<300	<20	<0.50	<0.50	<0.50	<0.50	<0.50	<0.50	
7/18/2007	<300	<20	<0.50	<0.50	<0.50	<0.50	<0.50	<0.50	

SYMBOLS AND ABBREVIATIONS:

< = Not detected at or above specified laboratory reporting limit

1,2-DCA = 1,2-Dichloroethane

DIPE = Di-isopropyl ether

EDB = 1,2-Dibromoethane

ETBE = Ethyl tert-butyl ether

MTBE = Methyl tert-butyl ether

µg/L = Micrograms per liter

TAME = tert-Amyl methyl ether

TBA = tert-Butyl alcohol

FOOTNOTES:

a = Calibration verification was within the method limits but outside the contract limits for ethanol.

Note: The data within this table collected prior to April 2006 was provided to Broadbent & Associates, Inc. by Atlantic Richfield Company and their previous consultants. Broadbent & Associates, Inc. has not verified the accuracy of this information.

Table 3. Historical Ground-Water Flow Direction and Gradient
Station #771, 899 Rincon Ave., Livermore, CA

Date Sampled	Approximate Flow Direction	Approximate Hydraulic Gradient
3/20/1995	Northwest	0.030
6/2/1995	North-Northwest	0.014
8/23/1995	North-Northwest	0.030
12/4/1995	North-Northwest	0.030
2/20/1996	Northwest	0.016
5/15/1996	Northwest	0.024
8/13/1996	North-Northwest	0.030
11/13/1996	North-Northwest	0.031
3/26/1997	North-Northwest	0.044
5/15/1997	North-Northwest	0.031
8/26/1997	North-Northwest	0.042
11/5/1997	North-Northwest	0.030
2/18/1998	Northwest	0.010
5/20/1998	Northwest	0.030
7/30/1998	North	0.040
10/29/1998	North	0.005
3/16/1999	North-Northwest	0.030
5/5/1999	North	0.040
8/26/1999	North-Northwest	0.050
12/3/1999	North-Northeast	0.060
3/13/2000	North-Northwest	0.066
6/20/2000	North-Northwest	0.050
8/31/2000	North-Northwest	0.062
2/9/2001	North-Northeast	0.014
9/17/2001	North-Northwest	0.061
1/21/2002	North-Northwest	0.050
7/19/2002	North-Northwest	0.044
1/15/2003	Northeast to Southeast	0.038 - 0.016
7/9/2003	Northwest to North-Northwest	0.009 - 0.063
2/19/2004	North	0.044
8/4/2004	Northeast	0.071
1/18/2005	North-Northeast	0.04
7/15/2005	Northeast and Southwest	0.05 and 0.02
1/10/2006	North	0.02
7/21/2006	North and Southwest	0.05 and 0.02
1/17/2007	North-Northeast and Southwest	0.03 and 0.02
7/18/2007	North-Northeast to Southwest	0.03 and 0.04

Note: The data within this table collected prior to April 2006 was provided to Broadbent & Associates, Inc. by Atlantic Richfield Company and their previous consultants. Broadbent & Associates, Inc. has not verified the accuracy of this information.

APPENDIX A

**STRATUS ENVIRONMENTAL, INC. GROUND-WATER SAMPLING DATA PACKAGE
(INCLUDES, FIELD DATA SHEETS, NON-HAZARDOUS WASTE DATA
FORM, AND CERTIFIED LABORATORY ANALYTICAL RESULTS AND
CHAIN OF CUSTODY DOCUMENTATION)**



3330 Cameron Park Drive, Ste 550
Cameron Park, California 95682
(530) 676-6004 ~ Fax: (530) 676-6005

August 9, 2007

Mr. Rob Miller
Broadbent & Associates
2000 Kirman Ave.
Reno, NV 89502

Re: Groundwater Sampling Data Package, BP Service Station No. 771, located at 899 Rincon Avenue, Livermore, California

General Information

Data Submittal Prepared / Reviewed by: Sandy Hayes / Jay Johnson

Phone Number: (530) 676-6000

On-Site Supplier Representatives: Vince Zalutka and David DeMello

Date: July 18, 2007

Arrival: 04:50

Departure: 09:00

Weather Conditions: Clear

Unusual Field Conditions: Clear

Scope of Work Performed: Quarterly monitoring and sampling

Variations from Work Scope: Wells MW-2, MW-6 and MW-7 purged dry before three casing volumes could be removed.

This submittal presents the tabulation of data collected in association with routine groundwater monitoring. The attachments include field data sheets, non-hazardous waste data form, chain of custody documentation, and certified analytical results. The information is being provided to BP-ARCO's Scoping Supplier for use in preparing a report for regulatory submittal. This submittal is limited to presentation of collected data and does not include data interpretation or conclusions or recommendations. Any questions concerning this submittal should be addressed to the Preparer/Reviewer identified above.

Sincerely,

STRATUS ENVIRONMENTAL, INC.


Jay R. Johnson, P.G.
Project Manager



Attachments:

- Field Data Sheets
- Non-Hazardous Waste Data Form
- Chain of Custody Documentation
- Certified Analytical Results

cc: Mr. Paul Supple, BP/ARCO



Site Address 899 Rincon Ave
 City Livermore, CA
 Sampled By: David D & VinceZ

Site Number Arco 771
 Project No E771
 Project PM Jay Johnson
 Date 7/18/07

ORIGINAL

Well ID MW-9					Well ID MW-10				
purge start time					purge start time				
	Temp C	pH	cond	gallons		Temp C	pH	cond	gallons
time					time				
time					time				
time					time				
time					time				
purge stop time					purge stop time				
Well ID MW-11 0551					Well ID RW-1 0645				
purge start time <i>Boiler No Odor</i>					purge start time <i>No Purge No Odor</i>				
	Temp C	pH	cond	gallons		Temp C	pH	cond	gallons
time	19.5	7.12	1049	∅	time	21.1	7.48	694	∅
time					time				
time					time				
time					time				
purge stop time					purge stop time <i>DRP (100)</i>				
Well ID VW-1 0717					Well ID 0				
Purge start time <i>No Purge No Odor</i>					Purge start time				
	Temp C	pH	cond	gallons		Temp C	pH	cond	gallons
time	21.3	8.52	689	∅	time				
time					time				
time					time				
time					time				
purge stop time <i>DRP (100)</i>					purge stop time				
Well ID 0					Well ID 0				
purge start time					purge start time				
	Temp C	pH	cond	gallons		Temp C	pH	cond	gallons
time					time				
time					time				
time					time				
time					time				
purge stop time					purge stop time				

NO. 862219

NON-HAZARDOUS WASTE DATA FORM

TO BE COMPLETED BY GENERATOR

NAME BP WEST COAST PRODUCTS LLC EPA I.D. NO. NOT REQUIRED

ADDRESS P.O. BOX 80249 PROFILE NO.
RANCHO SANTA MARGARITA

CITY, STATE, ZIP CA 92688 PHONE NO. () () ()

CONTAINERS: No. VOLUME 24 WEIGHT

TYPE: TANK TRUCK DUMP TRUCK DRUMS CARTONS OTHER

WASTE DESCRIPTION			GENERATING PROCESS		
COMPONENTS OF WASTE	PPM	%	COMPONENTS OF WASTE	PPM	%
1. <u>WATER</u>	<u>99-100%</u>	<u> </u>	5. <u> </u>	<u> </u>	<u> </u>
2. <u>TPH</u>	<u><1%</u>	<u> </u>	6. <u> </u>	<u> </u>	<u> </u>
3. <u> </u>	<u> </u>	<u> </u>	7. <u>BEST#</u>	<u> </u>	<u> </u>
4. <u> </u>	<u> </u>	<u> </u>	8. <u> </u>	<u> </u>	<u> </u>

PROPERTIES: 7-10 pH SOLID LIQUID SLUDGE SLURRY OTHER

HANDLING INSTRUCTIONS: WEAR ALL APPROPRIATE PROTECTIVE CLOTHING

THE GENERATOR CERTIFIES THAT THE WASTE AS DESCRIBED IS 100% NON-HAZARDOUS.

Larry Moothart
 TYPED OR PRINTED FULL NAME & SIGNATURE Larry Moothart BEST for BP DATE 7/18/07

TRANSPORTER

NAME STRATUS ENVIRONMENTAL EPA I.D. NO.

ADDRESS 3330 CAMERON PARK DRIVE STE 350 SERVICE ORDER NO.

CITY, STATE, ZIP CAMERON PARK CA 95682 PICK UP DATE

PHONE NO. 530-676-6004

TRUCK, UNIT, I.D. NO. TYPED OR PRINTED FULL NAME & SIGNATURE DATE

TSD FACILITY

NAME SEAPORT REFINING & ENVIRONMENTAL, LLC EPA I.D. NO.

ADDRESS 700 SEAPORT BLVD. DISPOSAL METHOD LANDFILL OTHER

CITY, STATE, ZIP REDWOOD CITY, CA 94063

PHONE NO. 650-354-1024

TYPED OR PRINTED FULL NAME & SIGNATURE DATE

GEN	OLD/NEW	L	A	TONS
TRANS		S	B	
C/O		RT/CD	HWDF	NONE

DISCREPANCY


3 August, 2007

Jay Johnson
Stratus Environmental Inc. [Arco]
3330 Cameron Park Dr., Suite 550
Cameron Park, CA 95682

RE: ARCO #0771, Livermore, CA
Work Order: MQG0684

Enclosed are the results of analyses for samples received by the laboratory on 07/18/07 19:30. If you have any questions concerning this report, please feel free to contact me.

Sincerely,



Lisa Race
Senior Project Manager

CA ELAP Certificate # 1210

The results in this laboratory report pertain only to the samples tested in the laboratory. The analyses contained in this report were performed in accordance with the BPGCLN Technical Specifications, applicable Federal, State, local regulations and certification requirements as well as the methodologies as described in laboratory SOPs reviewed by the BPGCLN. This entire report was reviewed and approved for release.

Stratus Environmental Inc. [Arco]
3330 Cameron Park Dr., Suite 550
Cameron Park CA, 95682

Project: ARCO #0771, Livermore, CA
Project Number: G0C1M-0020
Project Manager: Jay Johnson

MQG0684
Reported:
08/03/07 13:55

ANALYTICAL REPORT FOR SAMPLES

Sample ID	Laboratory ID	Matrix	Date Sampled	Date Received
MW-2	MQG0684-01	Water	07/18/07 08:35	07/18/07 19:30
MW-4	MQG0684-02	Water	07/18/07 06:47	07/18/07 19:30
MW-5	MQG0684-03	Water	07/18/07 05:55	07/18/07 19:30
MW-6	MQG0684-04	Water	07/18/07 07:45	07/18/07 19:30
MW-7	MQG0684-05	Water	07/18/07 08:25	07/18/07 19:30
MW-11	MQG0684-06	Water	07/18/07 05:51	07/18/07 19:30
RW-1	MQG0684-07	Water	07/18/07 06:45	07/18/07 19:30
VW-1	MQG0684-08	Water	07/18/07 07:17	07/18/07 19:30
TB-771	MQG0684-09	Water	07/18/07 06:00	07/18/07 19:30

The carbon range for the TPH-GRO has been changed from C6-C10 to C4-C12. The carbon range for TPH-DRO has been changed from C10-C28 to C10-C36. EPA 8015B has been modified to better meet the requirements of California regulatory agencies.

These samples were received with no custody seals.

Stratus Environmental Inc. [Arco]
3330 Cameron Park Dr., Suite 550
Cameron Park CA, 95682

Project: ARCO #0771, Livermore, CA
Project Number: G0C1M-0020
Project Manager: Jay Johnson

MQG0684
Reported:
08/03/07 13:55

Total Purgeable Hydrocarbons by GC/MS (CA LUFT)
TestAmerica - Morgan Hill, CA

Analyte	Result	Reporting Limit	Units	Dilution	Batch	Prepared	Analyzed	Method	Notes
MW-2 (MQG0684-01) Water Sampled: 07/18/07 08:35 Received: 07/18/07 19:30									
Gasoline Range Organics (C4-C12)	2300	100	ug/l	2	7G26048	07/25/07	07/27/07	LUFT GCMS	
Surrogate: 1,2-Dichloroethane-d4		94 %	60-125		"	"	"	"	
Surrogate: Dibromofluoromethane		94 %	75-120		"	"	"	"	
Surrogate: Toluene-d8		100 %	80-120		"	"	"	"	
Surrogate: 4-Bromofluorobenzene		95 %	60-135		"	"	"	"	
MW-4 (MQG0684-02) Water Sampled: 07/18/07 06:47 Received: 07/18/07 19:30									
Gasoline Range Organics (C4-C12)	2400	50	ug/l	1	7G26048	07/25/07	07/27/07	LUFT GCMS	
Surrogate: 1,2-Dichloroethane-d4		94 %	60-125		"	"	"	"	
Surrogate: Dibromofluoromethane		99 %	75-120		"	"	"	"	
Surrogate: Toluene-d8		98 %	80-120		"	"	"	"	
Surrogate: 4-Bromofluorobenzene		92 %	60-135		"	"	"	"	
MW-5 (MQG0684-03) Water Sampled: 07/18/07 05:55 Received: 07/18/07 19:30									
Gasoline Range Organics (C4-C12)	470	50	ug/l	1	7G26048	07/25/07	07/27/07	LUFT GCMS	
Surrogate: 1,2-Dichloroethane-d4		96 %	60-125		"	"	"	"	
Surrogate: Dibromofluoromethane		89 %	75-120		"	"	"	"	
Surrogate: Toluene-d8		100 %	80-120		"	"	"	"	
Surrogate: 4-Bromofluorobenzene		93 %	60-135		"	"	"	"	
MW-6 (MQG0684-04) Water Sampled: 07/18/07 07:45 Received: 07/18/07 19:30									
Gasoline Range Organics (C4-C12)	ND	50	ug/l	1	7G26048	07/25/07	07/27/07	LUFT GCMS	
Surrogate: 1,2-Dichloroethane-d4		90 %	60-125		"	"	"	"	
Surrogate: Dibromofluoromethane		97 %	75-120		"	"	"	"	
Surrogate: Toluene-d8		96 %	80-120		"	"	"	"	
Surrogate: 4-Bromofluorobenzene		94 %	60-135		"	"	"	"	

Stratus Environmental Inc. [Arco]
3330 Cameron Park Dr., Suite 550
Cameron Park CA, 95682

Project: ARCO #0771, Livermore, CA
Project Number: G0C1M-0020
Project Manager: Jay Johnson

MQG0684
Reported:
08/03/07 13:55

Total Purgeable Hydrocarbons by GC/MS (CA LUFT)
TestAmerica - Morgan Hill, CA

Analyte	Result	Reporting Limit	Units	Dilution	Batch	Prepared	Analyzed	Method	Notes
MW-7 (MQG0684-05) Water Sampled: 07/18/07 08:25 Received: 07/18/07 19:30									
Gasoline Range Organics (C4-C12)	2400	100	ug/l	2	7G26048	07/25/07	07/27/07	LUFT GCMS	
Surrogate: 1,2-Dichloroethane-d4		97 %	60-125		"	"	"	"	
Surrogate: Dibromofluoromethane		94 %	75-120		"	"	"	"	
Surrogate: Toluene-d8		100 %	80-120		"	"	"	"	
Surrogate: 4-Bromofluorobenzene		94 %	60-135		"	"	"	"	
MW-11 (MQG0684-06) Water Sampled: 07/18/07 05:51 Received: 07/18/07 19:30									
Gasoline Range Organics (C4-C12)	ND	50	ug/l	1	7G26048	07/25/07	07/26/07	LUFT GCMS	
Surrogate: 1,2-Dichloroethane-d4		94 %	60-125		"	"	"	"	
Surrogate: Dibromofluoromethane		97 %	75-120		"	"	"	"	
Surrogate: Toluene-d8		100 %	80-120		"	"	"	"	
Surrogate: 4-Bromofluorobenzene		87 %	60-135		"	"	"	"	
RW-1 (MQG0684-07) Water Sampled: 07/18/07 06:45 Received: 07/18/07 19:30									
Gasoline Range Organics (C4-C12)	ND	50	ug/l	1	7G30002	07/30/07	07/30/07	LUFT GCMS	
Surrogate: 1,2-Dichloroethane-d4		108 %	60-125		"	"	"	"	
Surrogate: Dibromofluoromethane		107 %	75-120		"	"	"	"	
Surrogate: Toluene-d8		101 %	80-120		"	"	"	"	
Surrogate: 4-Bromofluorobenzene		102 %	60-135		"	"	"	"	
VW-1 (MQG0684-08) Water Sampled: 07/18/07 07:17 Received: 07/18/07 19:30									
Gasoline Range Organics (C4-C12)	ND	50	ug/l	1	7G26048	07/25/07	07/27/07	LUFT GCMS	
Surrogate: 1,2-Dichloroethane-d4		96 %	60-125		"	"	"	"	
Surrogate: Dibromofluoromethane		100 %	75-120		"	"	"	"	
Surrogate: Toluene-d8		99 %	80-120		"	"	"	"	
Surrogate: 4-Bromofluorobenzene		92 %	60-135		"	"	"	"	

Stratus Environmental Inc. [Arco]
3330 Cameron Park Dr., Suite 550
Cameron Park CA, 95682

Project: ARCO #0771, Livermore, CA
Project Number: G0CIM-0020
Project Manager: Jay Johnson

MQG0684
Reported:
08/03/07 13:55

Volatile Organic Compounds by EPA Method 8260B
TestAmerica - Morgan Hill, CA

Analyte	Result	Reporting Limit	Units	Dilution	Batch	Prepared	Analyzed	Method	Notes
MW-2 (MQG0684-01) Water Sampled: 07/18/07 08:35 Received: 07/18/07 19:30									
tert-Amyl methyl ether	ND	1.0	ug/l	2	7G26048	07/25/07	07/27/07	EPA 8260B	
Benzene	58	1.0	"	"	"	"	"	"	
tert-Butyl alcohol	89	40	"	"	"	"	"	"	
Di-isopropyl ether	ND	1.0	"	"	"	"	"	"	
1,2-Dibromoethane (EDB)	ND	1.0	"	"	"	"	"	"	
1,2-Dichloroethane	ND	1.0	"	"	"	"	"	"	
Ethanol	ND	600	"	"	"	"	"	"	
Ethyl tert-butyl ether	ND	1.0	"	"	"	"	"	"	
Ethylbenzene	9.5	1.0	"	"	"	"	"	"	
Methyl tert-butyl ether	45	1.0	"	"	"	"	"	"	
Toluene	2.4	1.0	"	"	"	"	"	"	
Xylenes (total)	3.5	1.0	"	"	"	"	"	"	
<i>Surrogate: Dibromofluoromethane</i>		94 %		75-120	"	"	"	"	
<i>Surrogate: 1,2-Dichloroethane-d4</i>		94 %		60-125	"	"	"	"	
<i>Surrogate: Toluene-d8</i>		100 %		80-120	"	"	"	"	
<i>Surrogate: 4-Bromofluorobenzene</i>		95 %		60-135	"	"	"	"	
MW-4 (MQG0684-02) Water Sampled: 07/18/07 06:47 Received: 07/18/07 19:30									
tert-Amyl methyl ether	ND	0.50	ug/l	1	7G26048	07/25/07	07/27/07	EPA 8260B	
tert-Butyl alcohol	830	20	"	"	"	"	"	"	
Di-isopropyl ether	ND	0.50	"	"	"	"	"	"	
1,2-Dibromoethane (EDB)	ND	0.50	"	"	"	"	"	"	
1,2-Dichloroethane	0.76	0.50	"	"	"	"	"	"	
Ethanol	ND	300	"	"	"	"	"	"	
Ethyl tert-butyl ether	ND	0.50	"	"	"	"	"	"	
Ethylbenzene	1.3	0.50	"	"	"	"	"	"	
Methyl tert-butyl ether	74	0.50	"	"	"	"	"	"	
Toluene	6.8	0.50	"	"	"	"	"	"	
Xylenes (total)	4.1	0.50	"	"	"	"	"	"	
<i>Surrogate: Dibromofluoromethane</i>		99 %		75-120	"	"	"	"	
<i>Surrogate: 1,2-Dichloroethane-d4</i>		94 %		60-125	"	"	"	"	
<i>Surrogate: Toluene-d8</i>		98 %		80-120	"	"	"	"	
<i>Surrogate: 4-Bromofluorobenzene</i>		92 %		60-135	"	"	"	"	

Stratus Environmental Inc. [Arco]
3330 Cameron Park Dr., Suite 550
Cameron Park CA, 95682

Project: ARCO #0771, Livermore, CA
Project Number: G0CIM-0020
Project Manager: Jay Johnson

MQG0684
Reported:
08/03/07 13:55

Volatile Organic Compounds by EPA Method 8260B
TestAmerica - Morgan Hill, CA

Analyte	Result	Reporting Limit	Units	Dilution	Batch	Prepared	Analyzed	Method	Notes
MW-4 (MQG0684-02RE1) Water Sampled: 07/18/07 06:47 Received: 07/18/07 19:30									
Benzene	140	5.0	ug/l	10	7G30002	07/30/07	07/30/07	EPA 8260B	
<i>Surrogate: Dibromofluoromethane</i>		92 %	75-120		"	"	"	"	
<i>Surrogate: 1,2-Dichloroethane-d4</i>		87 %	60-125		"	"	"	"	
<i>Surrogate: Toluene-d8</i>		100 %	80-120		"	"	"	"	
<i>Surrogate: 4-Bromofluorobenzene</i>		92 %	60-135		"	"	"	"	
MW-5 (MQG0684-03) Water Sampled: 07/18/07 05:55 Received: 07/18/07 19:30									
tert-Amyl methyl ether	ND	0.50	ug/l	1	7G26048	07/25/07	07/27/07	EPA 8260B	
Benzene	36	0.50	"	"	"	"	"	"	
tert-Butyl alcohol	260	20	"	"	"	"	"	"	
Di-isopropyl ether	ND	0.50	"	"	"	"	"	"	
1,2-Dibromoethane (EDB)	ND	0.50	"	"	"	"	"	"	
1,2-Dichloroethane	ND	0.50	"	"	"	"	"	"	
Ethanol	ND	300	"	"	"	"	"	"	
Ethyl tert-butyl ether	ND	0.50	"	"	"	"	"	"	
Ethylbenzene	0.97	0.50	"	"	"	"	"	"	
Methyl tert-butyl ether	110	0.50	"	"	"	"	"	"	
Toluene	0.84	0.50	"	"	"	"	"	"	
Xylenes (total)	2.2	0.50	"	"	"	"	"	"	
<i>Surrogate: Dibromofluoromethane</i>		89 %	75-120		"	"	"	"	
<i>Surrogate: 1,2-Dichloroethane-d4</i>		96 %	60-125		"	"	"	"	
<i>Surrogate: Toluene-d8</i>		100 %	80-120		"	"	"	"	
<i>Surrogate: 4-Bromofluorobenzene</i>		93 %	60-135		"	"	"	"	
MW-6 (MQG0684-04) Water Sampled: 07/18/07 07:45 Received: 07/18/07 19:30									
tert-Amyl methyl ether	ND	0.50	ug/l	1	7G26048	07/25/07	07/27/07	EPA 8260B	
Benzene	ND	0.50	"	"	"	"	"	"	
tert-Butyl alcohol	ND	20	"	"	"	"	"	"	
Di-isopropyl ether	ND	0.50	"	"	"	"	"	"	
1,2-Dibromoethane (EDB)	ND	0.50	"	"	"	"	"	"	
1,2-Dichloroethane	ND	0.50	"	"	"	"	"	"	
Ethanol	ND	300	"	"	"	"	"	"	
Ethyl tert-butyl ether	ND	0.50	"	"	"	"	"	"	
Ethylbenzene	ND	0.50	"	"	"	"	"	"	
Methyl tert-butyl ether	ND	0.50	"	"	"	"	"	"	
Toluene	ND	0.50	"	"	"	"	"	"	
Xylenes (total)	ND	0.50	"	"	"	"	"	"	
<i>Surrogate: Dibromofluoromethane</i>		97 %	75-120		"	"	"	"	

TestAmerica - Morgan Hill, CA

The results in this report apply to the samples analyzed in accordance with the chain of custody document. Unless otherwise stated, results are reported on a wet weight basis. This analytical report must be reproduced in its entirety.

Stratus Environmental Inc. [Arco]
3330 Cameron Park Dr., Suite 550
Cameron Park CA, 95682

Project: ARCO #0771, Livermore, CA
Project Number: G0C1M-0020
Project Manager: Jay Johnson

MQG0684
Reported:
08/03/07 13:55

Volatile Organic Compounds by EPA Method 8260B
TestAmerica - Morgan Hill, CA

Analyte	Result	Reporting Limit	Units	Dilution	Batch	Prepared	Analyzed	Method	Notes
MW-6 (MQG0684-04) Water Sampled: 07/18/07 07:45 Received: 07/18/07 19:30									
Surrogate: 1,2-Dichloroethane-d4		90 %	60-125		7G26048	07/25/07	07/27/07	EPA 8260B	
Surrogate: Toluene-d8		96 %	80-120		"	"	"	"	
Surrogate: 4-Bromofluorobenzene		94 %	60-135		"	"	"	"	
MW-7 (MQG0684-05) Water Sampled: 07/18/07 08:25 Received: 07/18/07 19:30									
tert-Amyl methyl ether	ND	1.0	ug/l	2	7G26048	07/25/07	07/27/07	EPA 8260B	
Benzene	140	1.0	"	"	"	"	"	"	
tert-Butyl alcohol	220	40	"	"	"	"	"	"	
Di-isopropyl ether	ND	1.0	"	"	"	"	"	"	
1,2-Dibromoethane (EDB)	ND	1.0	"	"	"	"	"	"	
1,2-Dichloroethane	ND	1.0	"	"	"	"	"	"	
Ethanol	ND	600	"	"	"	"	"	"	
Ethyl tert-butyl ether	ND	1.0	"	"	"	"	"	"	
Ethylbenzene	9.1	1.0	"	"	"	"	"	"	
Methyl tert-butyl ether	67	1.0	"	"	"	"	"	"	
Toluene	2.8	1.0	"	"	"	"	"	"	
Xylenes (total)	7.3	1.0	"	"	"	"	"	"	
Surrogate: Dibromofluoromethane		94 %	75-120		"	"	"	"	
Surrogate: 1,2-Dichloroethane-d4		97 %	60-125		"	"	"	"	
Surrogate: Toluene-d8		100 %	80-120		"	"	"	"	
Surrogate: 4-Bromofluorobenzene		94 %	60-135		"	"	"	"	
MW-11 (MQG0684-06) Water Sampled: 07/18/07 05:51 Received: 07/18/07 19:30									
tert-Amyl methyl ether	ND	0.50	ug/l	1	7G26048	07/25/07	07/26/07	EPA 8260B	
Benzene	ND	0.50	"	"	"	"	"	"	
tert-Butyl alcohol	ND	20	"	"	"	"	"	"	
Di-isopropyl ether	ND	0.50	"	"	"	"	"	"	
1,2-Dibromoethane (EDB)	ND	0.50	"	"	"	"	"	"	
1,2-Dichloroethane	ND	0.50	"	"	"	"	"	"	
Ethanol	ND	300	"	"	"	"	"	"	
Ethyl tert-butyl ether	ND	0.50	"	"	"	"	"	"	
Ethylbenzene	ND	0.50	"	"	"	"	"	"	
Methyl tert-butyl ether	ND	0.50	"	"	"	"	"	"	
Toluene	ND	0.50	"	"	"	"	"	"	
Xylenes (total)	ND	0.50	"	"	"	"	"	"	
Surrogate: Dibromofluoromethane		97 %	75-120		"	"	"	"	
Surrogate: 1,2-Dichloroethane-d4		94 %	60-125		"	"	"	"	
Surrogate: Toluene-d8		100 %	80-120		"	"	"	"	
Surrogate: 4-Bromofluorobenzene		87 %	60-135		"	"	"	"	

TestAmerica - Morgan Hill, CA

The results in this report apply to the samples analyzed in accordance with the chain of custody document. Unless otherwise stated, results are reported on a wet weight basis. This analytical report must be reproduced in its entirety.

Stratus Environmental Inc. [Arco]
3330 Cameron Park Dr., Suite 550
Cameron Park CA, 95682

Project: ARCO #0771, Livermore, CA
Project Number: G0C1M-0020
Project Manager: Jay Johnson

MQG0684
Reported:
08/03/07 13:55

Volatile Organic Compounds by EPA Method 8260B
TestAmerica - Morgan Hill, CA

Analyte	Result	Reporting Limit	Units	Dilution	Batch	Prepared	Analyzed	Method	Notes
RW-1 (MQG0684-07) Water Sampled: 07/18/07 06:45 Received: 07/18/07 19:30									
tert-Amyl methyl ether	ND	0.50	ug/l	1	7G30002	07/30/07	07/30/07	EPA 8260B	
Benzene	ND	0.50	"	"	"	"	"	"	
tert-Butyl alcohol	ND	20	"	"	"	"	"	"	
Di-isopropyl ether	ND	0.50	"	"	"	"	"	"	
1,2-Dibromoethane (EDB)	ND	0.50	"	"	"	"	"	"	
1,2-Dichloroethane	ND	0.50	"	"	"	"	"	"	
Ethanol	ND	300	"	"	"	"	"	"	
Ethyl tert-butyl ether	ND	0.50	"	"	"	"	"	"	
Ethylbenzene	ND	0.50	"	"	"	"	"	"	
Methyl tert-butyl ether	ND	0.50	"	"	"	"	"	"	
Toluene	ND	0.50	"	"	"	"	"	"	
Xylenes (total)	ND	0.50	"	"	"	"	"	"	
<i>Surrogate: Dibromofluoromethane</i>		107 %	75-120		"	"	"	"	
<i>Surrogate: 1,2-Dichloroethane-d4</i>		108 %	60-125		"	"	"	"	
<i>Surrogate: Toluene-d8</i>		101 %	80-120		"	"	"	"	
<i>Surrogate: 4-Bromofluorobenzene</i>		102 %	60-135		"	"	"	"	
VW-1 (MQG0684-08) Water Sampled: 07/18/07 07:17 Received: 07/18/07 19:30									
tert-Amyl methyl ether	ND	0.50	ug/l	1	7G26048	07/25/07	07/27/07	EPA 8260B	
Benzene	ND	0.50	"	"	"	"	"	"	
tert-Butyl alcohol	ND	20	"	"	"	"	"	"	
Di-isopropyl ether	ND	0.50	"	"	"	"	"	"	
1,2-Dibromoethane (EDB)	ND	0.50	"	"	"	"	"	"	
1,2-Dichloroethane	ND	0.50	"	"	"	"	"	"	
Ethanol	ND	300	"	"	"	"	"	"	
Ethyl tert-butyl ether	ND	0.50	"	"	"	"	"	"	
Ethylbenzene	ND	0.50	"	"	"	"	"	"	
Methyl tert-butyl ether	ND	0.50	"	"	"	"	"	"	
Toluene	ND	0.50	"	"	"	"	"	"	
Xylenes (total)	ND	0.50	"	"	"	"	"	"	
<i>Surrogate: Dibromofluoromethane</i>		100 %	75-120		"	"	"	"	
<i>Surrogate: 1,2-Dichloroethane-d4</i>		96 %	60-125		"	"	"	"	
<i>Surrogate: Toluene-d8</i>		99 %	80-120		"	"	"	"	
<i>Surrogate: 4-Bromofluorobenzene</i>		92 %	60-135		"	"	"	"	

Stratus Environmental Inc. [Arco]
3330 Cameron Park Dr., Suite 550
Cameron Park CA, 95682

Project: ARCO #0771, Livermore, CA
Project Number: G0CIM-0020
Project Manager: Jay Johnson

MQG0684
Reported:
08/03/07 13:55

Total Purgeable Hydrocarbons by GC/MS (CA LUFT) - Quality Control
TestAmerica - Morgan Hill, CA

Analyte	Result	Reporting Limit	Units	Spike Level	Source Result	%REC	%REC Limits	RPD	RPD Limit	Notes
---------	--------	-----------------	-------	-------------	---------------	------	-------------	-----	-----------	-------

Batch 7G26048 - EPA 5030B P/T / LUFT GCMS

Blank (7G26048-BLK1)										
										Prepared & Analyzed: 07/26/07
Gasoline Range Organics (C4-C12)	ND	50	ug/l							
Surrogate: 1,2-Dichloroethane-d4	2.33		"	2.50		93	60-125			
Surrogate: Dibromofluoromethane	2.42		"	2.50		97	75-120			
Surrogate: Toluene-d8	2.46		"	2.50		98	80-120			
Surrogate: 4-Bromofluorobenzene	2.14		"	2.50		86	60-135			

Laboratory Control Sample (7G26048-BS2)										
										Prepared & Analyzed: 07/26/07
Gasoline Range Organics (C4-C12)	369	50	ug/l	500		74	65-120			
Surrogate: 1,2-Dichloroethane-d4	2.35		"	2.50		94	60-125			
Surrogate: Dibromofluoromethane	2.42		"	2.50		97	75-120			
Surrogate: Toluene-d8	2.47		"	2.50		99	80-120			
Surrogate: 4-Bromofluorobenzene	2.31		"	2.50		92	60-135			

Laboratory Control Sample Dup (7G26048-BS2)										
										Prepared & Analyzed: 07/26/07
Gasoline Range Organics (C4-C12)	367	50	ug/l	500		73	65-120	0.6	20	
Surrogate: 1,2-Dichloroethane-d4	2.34		"	2.50		94	60-125			
Surrogate: Dibromofluoromethane	2.42		"	2.50		97	75-120			
Surrogate: Toluene-d8	2.50		"	2.50		100	80-120			
Surrogate: 4-Bromofluorobenzene	2.35		"	2.50		94	60-135			

Batch 7G30002 - EPA 5030B P/T / LUFT GCMS

Blank (7G30002-BLK1)										
										Prepared & Analyzed: 07/30/07
Gasoline Range Organics (C4-C12)	ND	50	ug/l							
Surrogate: 1,2-Dichloroethane-d4	2.49		"	2.50		100	60-125			
Surrogate: Dibromofluoromethane	2.55		"	2.50		102	75-120			
Surrogate: Toluene-d8	2.57		"	2.50		103	80-120			
Surrogate: 4-Bromofluorobenzene	2.59		"	2.50		104	60-135			

Stratus Environmental Inc. [Arco]
3330 Cameron Park Dr., Suite 550
Cameron Park CA, 95682

Project: ARCO #0771, Livermore, CA
Project Number: G0C1M-0020
Project Manager: Jay Johnson

MQG0684
Reported:
08/03/07 13:55

Total Purgeable Hydrocarbons by GC/MS (CA LUFT) - Quality Control
TestAmerica - Morgan Hill, CA

Analyte	Result	Reporting Limit	Units	Spike Level	Source Result	%REC	%REC Limits	RPD	RPD Limit	Notes
---------	--------	-----------------	-------	-------------	---------------	------	-------------	-----	-----------	-------

Batch 7G30002 - EPA 5030B P/T / LUFT GCMS

Laboratory Control Sample (7G30002-BS2)				Prepared & Analyzed: 07/30/07						
Gasoline Range Organics (C4-C12)	464	50	ug/l	500		93	65-120			
Surrogate: 1,2-Dichloroethane-d4	2.50		"	2.50		100	60-125			
Surrogate: Dibromofluoromethane	2.50		"	2.50		100	75-120			
Surrogate: Toluene-d8	2.50		"	2.50		100	80-120			
Surrogate: 4-Bromofluorobenzene	2.50		"	2.50		100	60-135			
Laboratory Control Sample Dup (7G30002-BSD2)				Prepared & Analyzed: 07/30/07						
Gasoline Range Organics (C4-C12)	465	50	ug/l	500		93	65-120	0.1	20	
Surrogate: 1,2-Dichloroethane-d4	2.50		"	2.50		100	60-125			
Surrogate: Dibromofluoromethane	2.50		"	2.50		100	75-120			
Surrogate: Toluene-d8	2.50		"	2.50		100	80-120			
Surrogate: 4-Bromofluorobenzene	2.50		"	2.50		100	60-135			

Stratus Environmental Inc. [Arco]
3330 Cameron Park Dr., Suite 550
Cameron Park CA, 95682

Project: ARCO #0771, Livermore, CA
Project Number: G0C1M-0020
Project Manager: Jay Johnson

MQG0684
Reported:
08/03/07 13:55

Volatile Organic Compounds by EPA Method 8260B - Quality Control
TestAmerica - Morgan Hill, CA

Analyte	Result	Reporting Limit	Units	Spike Level	Source Result	%REC	%REC Limits	RPD	RPD Limit	Notes
---------	--------	-----------------	-------	-------------	---------------	------	-------------	-----	-----------	-------

Batch 7G26048 - EPA 5030B P/T / EPA 8260B

Blank (7G26048-BLK1)

Prepared & Analyzed: 07/26/07

tert-Amyl methyl ether	ND	0.50	ug/l							
Benzene	ND	0.50	"							
tert-Butyl alcohol	ND	20	"							
Di-isopropyl ether	ND	0.50	"							
1,2-Dibromoethane (EDB)	ND	0.50	"							
1,2-Dichloroethane	ND	0.50	"							
Ethanol	ND	300	"							
Ethyl tert-butyl ether	ND	0.50	"							
Ethylbenzene	ND	0.50	"							
Methyl tert-butyl ether	ND	0.50	"							
Toluene	ND	0.50	"							
Xylenes (total)	ND	0.50	"							
<i>Surrogate: Dibromofluoromethane</i>	2.42		"	2.50		97	75-120			
<i>Surrogate: 1,2-Dichloroethane-d4</i>	2.33		"	2.50		93	60-125			
<i>Surrogate: Toluene-d8</i>	2.46		"	2.50		98	80-120			
<i>Surrogate: 4-Bromofluorobenzene</i>	2.14		"	2.50		86	60-135			

Laboratory Control Sample (7G26048-BS1)

Prepared & Analyzed: 07/26/07

tert-Amyl methyl ether	8.47	0.50	ug/l	10.0		85	65-135			
Benzene	8.73	0.50	"	10.0		87	75-120			
tert-Butyl alcohol	161	20	"	200		81	60-135			
Di-isopropyl ether	8.95	0.50	"	10.0		90	70-130			
1,2-Dibromoethane (EDB)	8.92	0.50	"	10.0		89	80-135			
1,2-Dichloroethane	8.09	0.50	"	10.0		81	70-125			
Ethanol	180	300	"	200		90	15-150			
Ethyl tert-butyl ether	8.89	0.50	"	10.0		89	65-130			
Ethylbenzene	9.11	0.50	"	10.0		91	75-120			
Methyl tert-butyl ether	8.50	0.50	"	10.0		85	50-140			
Toluene	8.70	0.50	"	10.0		87	75-120			
Xylenes (total)	27.2	0.50	"	30.0		91	75-130			
<i>Surrogate: Dibromofluoromethane</i>	2.44		"	2.50		98	75-120			
<i>Surrogate: 1,2-Dichloroethane-d4</i>	2.38		"	2.50		95	60-125			
<i>Surrogate: Toluene-d8</i>	2.49		"	2.50		100	80-120			
<i>Surrogate: 4-Bromofluorobenzene</i>	2.41		"	2.50		96	60-135			

Stratus Environmental Inc. [Arco]
3330 Cameron Park Dr., Suite 550
Cameron Park CA, 95682

Project: ARCO #0771, Livermore, CA
Project Number: G0CIM-0020
Project Manager: Jay Johnson

MQG0684
Reported:
08/03/07 13:55

Volatile Organic Compounds by EPA Method 8260B - Quality Control
TestAmerica - Morgan Hill, CA

Analyte	Result	Reporting Limit	Units	Spike Level	Source Result	%REC	%REC Limits	RPD	RPD Limit	Notes
---------	--------	-----------------	-------	-------------	---------------	------	-------------	-----	-----------	-------

Batch 7G26048 - EPA 5030B P/T / EPA 8260B

Matrix Spike (7G26048-MS1)	Source: MQG0684-06			Prepared & Analyzed: 07/26/07						
tert-Amyl methyl ether	9.68	0.50	ug/l	10.0	ND	97	65-135			
Benzene	9.54	0.50	"	10.0	ND	95	75-120			
tert-Butyl alcohol	177	20	"	200	ND	89	60-135			
Di-isopropyl ether	9.89	0.50	"	10.0	ND	99	70-130			
1,2-Dibromoethane (EDB)	9.32	0.50	"	10.0	ND	93	80-135			
1,2-Dichloroethane	8.80	0.50	"	10.0	ND	88	70-125			
Ethanol	209	300	"	200	ND	105	15-150			
Ethyl tert-butyl ether	10.2	0.50	"	10.0	ND	102	65-130			
Ethylbenzene	9.93	0.50	"	10.0	ND	99	75-120			
Methyl tert-butyl ether	10.2	0.50	"	10.0	ND	102	50-140			
Toluene	9.56	0.50	"	10.0	ND	96	75-120			
Xylenes (total)	29.2	0.50	"	30.0	ND	97	75-130			
<i>Surrogate: Dibromofluoromethane</i>	2.51		"	2.50		100	75-120			
<i>Surrogate: 1,2-Dichloroethane-d4</i>	2.36		"	2.50		94	60-125			
<i>Surrogate: Toluene-d8</i>	2.44		"	2.50		98	80-120			
<i>Surrogate: 4-Bromofluorobenzene</i>	2.39		"	2.50		96	60-135			

Matrix Spike Dup (7G26048-MSD1)	Source: MQG0684-06			Prepared & Analyzed: 07/26/07						
tert-Amyl methyl ether	9.78	0.50	ug/l	10.0	ND	98	65-135	1	25	
Benzene	10.2	0.50	"	10.0	ND	102	75-120	6	20	
tert-Butyl alcohol	191	20	"	200	ND	95	60-135	7	25	
Di-isopropyl ether	10.3	0.50	"	10.0	ND	103	70-130	4	25	
1,2-Dibromoethane (EDB)	10.1	0.50	"	10.0	ND	101	80-135	8	30	
1,2-Dichloroethane	9.41	0.50	"	10.0	ND	94	70-125	7	25	
Ethanol	213	300	"	200	ND	106	15-150	2	25	
Ethyl tert-butyl ether	10.0	0.50	"	10.0	ND	100	65-130	2	25	
Ethylbenzene	10.6	0.50	"	10.0	ND	106	75-120	6	20	
Methyl tert-butyl ether	9.48	0.50	"	10.0	ND	95	50-140	7	25	
Toluene	10.0	0.50	"	10.0	ND	100	75-120	5	25	
Xylenes (total)	31.0	0.50	"	30.0	ND	103	75-130	6	20	
<i>Surrogate: Dibromofluoromethane</i>	2.56		"	2.50		102	75-120			
<i>Surrogate: 1,2-Dichloroethane-d4</i>	2.40		"	2.50		96	60-125			
<i>Surrogate: Toluene-d8</i>	2.50		"	2.50		100	80-120			
<i>Surrogate: 4-Bromofluorobenzene</i>	2.46		"	2.50		98	60-135			

TestAmerica - Morgan Hill, CA

The results in this report apply to the samples analyzed in accordance with the chain of custody document. Unless otherwise stated, results are reported on a wet weight basis. This analytical report must be reproduced in its entirety.

Stratus Environmental Inc. [Arco]
3330 Cameron Park Dr., Suite 550
Cameron Park CA, 95682

Project: ARCO #0771, Livermore, CA
Project Number: G0CIM-0020
Project Manager: Jay Johnson

MQG0684
Reported:
08/03/07 13:55

Volatile Organic Compounds by EPA Method 8260B - Quality Control
TestAmerica - Morgan Hill, CA

Analyte	Result	Reporting Limit	Units	Spike Level	Source Result	%REC	%REC Limits	RPD	RPD Limit	Notes
---------	--------	-----------------	-------	-------------	---------------	------	-------------	-----	-----------	-------

Batch 7G30002 - EPA 5030B P/T / EPA 8260B

Blank (7G30002-BLK1)

Prepared & Analyzed: 07/30/07

tert-Amyl methyl ether	ND	0.50	ug/l							
Benzene	ND	0.50	"							
tert-Butyl alcohol	ND	20	"							
Di-isopropyl ether	ND	0.50	"							
1,2-Dibromoethane (EDB)	ND	0.50	"							
1,2-Dichloroethane	ND	0.50	"							
Ethanol	ND	300	"							
Ethyl tert-butyl ether	ND	0.50	"							
Ethylbenzene	ND	0.50	"							
Methyl tert-butyl ether	ND ⁴	0.50	"							
Toluene	ND	0.50	"							
Xylenes (total)	ND	0.50	"							
<i>Surrogate: Dibromofluoromethane</i>	2.55		"	2.50		102	75-120			
<i>Surrogate: 1,2-Dichloroethane-d4</i>	2.49		"	2.50		100	60-125			
<i>Surrogate: Toluene-d8</i>	2.57		"	2.50		103	80-120			
<i>Surrogate: 4-Bromofluorobenzene</i>	2.59		"	2.50		104	60-135			

Laboratory Control Sample (7G30002-BS1)

Prepared & Analyzed: 07/30/07

tert-Amyl methyl ether	10.6	0.50	ug/l	10.0		106	65-135			
Benzene	10.4	0.50	"	10.0		104	75-120			
tert-Butyl alcohol	188	20	"	200		94	60-135			
Di-isopropyl ether	10.6	0.50	"	10.0		106	70-130			
1,2-Dibromoethane (EDB)	10.1	0.50	"	10.0		101	80-135			
1,2-Dichloroethane	9.54	0.50	"	10.0		95	70-125			
Ethanol	192	300	"	200		96	15-150			
Ethyl tert-butyl ether	10.6	0.50	"	10.0		106	65-130			
Ethylbenzene	11.3	0.50	"	10.0		113	75-120			
Methyl tert-butyl ether	10.0	0.50	"	10.0		100	50-140			
Toluene	10.7	0.50	"	10.0		107	75-120			
Xylenes (total)	33.6	0.50	"	30.0		112	75-130			
<i>Surrogate: Dibromofluoromethane</i>	2.52		"	2.50		101	75-120			
<i>Surrogate: 1,2-Dichloroethane-d4</i>	2.32		"	2.50		93	60-125			
<i>Surrogate: Toluene-d8</i>	2.59		"	2.50		104	80-120			
<i>Surrogate: 4-Bromofluorobenzene</i>	2.69		"	2.50		108	60-135			

Stratus Environmental Inc. [Arco]
3330 Cameron Park Dr., Suite 550
Cameron Park CA, 95682

Project: ARCO #0771, Livermore, CA
Project Number: G0C1M-0020
Project Manager: Jay Johnson

MQG0684
Reported:
08/03/07 13:55

Volatile Organic Compounds by EPA Method 8260B - Quality Control
TestAmerica - Morgan Hill, CA

Analyte	Result	Reporting Limit	Units	Spike Level	Source Result	%REC	%REC Limits	RPD	RPD Limit	Notes
---------	--------	-----------------	-------	-------------	---------------	------	-------------	-----	-----------	-------

Batch 7G30002 - EPA 5030B P/T / EPA 8260B

Matrix Spike (7G30002-MS1)	Source: MQG0970-03			Prepared & Analyzed: 07/30/07						
tert-Amyl methyl ether	8.64	0.50	ug/l	10.0	ND	86	65-135			
Benzene	10.0	0.50	"	10.0	ND	100	75-120			
tert-Butyl alcohol	184	20	"	200	ND	92	60-135			
Di-isopropyl ether	9.19	0.50	"	10.0	ND	92	70-130			
1,2-Dibromoethane (EDB)	8.75	0.50	"	10.0	ND	88	80-135			
1,2-Dichloroethane	8.55	0.50	"	10.0	ND	86	70-125			
Ethanol	249	300	"	200	ND	125	15-150			
Ethyl tert-butyl ether	8.72	0.50	"	10.0	ND	87	65-130			
Ethylbenzene	10.7	0.50	"	10.0	ND	107	75-120			
Methyl tert-butyl ether	8.47	0.50	"	10.0	ND	85	50-140			
Toluene	10.5	0.50	"	10.0	0.500	100	75-120			
Xylenes (total)	31.7	0.50	"	30.0	ND	106	75-130			
<i>Surrogate: Dibromofluoromethane</i>	2.39		"	2.50		96	75-120			
<i>Surrogate: 1,2-Dichloroethane-d4</i>	2.24		"	2.50		90	60-125			
<i>Surrogate: Toluene-d8</i>	2.46		"	2.50		98	80-120			
<i>Surrogate: 4-Bromofluorobenzene</i>	2.38		"	2.50		95	60-135			

Matrix Spike Dup (7G30002-MSD1)	Source: MQG0970-03			Prepared & Analyzed: 07/30/07						
tert-Amyl methyl ether	8.65	0.50	ug/l	10.0	ND	86	65-135	0.1	25	
Benzene	10.2	0.50	"	10.0	ND	102	75-120	1	20	
tert-Butyl alcohol	186	20	"	200	ND	93	60-135	1	25	
Di-isopropyl ether	8.94	0.50	"	10.0	ND	89	70-130	3	25	
1,2-Dibromoethane (EDB)	8.84	0.50	"	10.0	ND	88	80-135	1	30	
1,2-Dichloroethane	8.70	0.50	"	10.0	ND	87	70-125	2	25	
Ethanol	255	300	"	200	ND	128	15-150	2	25	
Ethyl tert-butyl ether	8.66	0.50	"	10.0	ND	87	65-130	0.7	25	
Ethylbenzene	11.0	0.50	"	10.0	ND	110	75-120	2	20	
Methyl tert-butyl ether	8.35	0.50	"	10.0	ND	84	50-140	1	25	
Toluene	10.3	0.50	"	10.0	0.500	98	75-120	2	25	
Xylenes (total)	32.1	0.50	"	30.0	ND	107	75-130	1	20	
<i>Surrogate: Dibromofluoromethane</i>	2.33		"	2.50		93	75-120			
<i>Surrogate: 1,2-Dichloroethane-d4</i>	2.16		"	2.50		86	60-125			
<i>Surrogate: Toluene-d8</i>	2.43		"	2.50		97	80-120			
<i>Surrogate: 4-Bromofluorobenzene</i>	2.47		"	2.50		99	60-135			

Stratus Environmental Inc. [Arco]
3330 Cameron Park Dr., Suite 550
Cameron Park CA, 95682

Project: ARCO #0771, Livermore, CA
Project Number: G0C1M-0020
Project Manager: Jay Johnson

MQG0684
Reported:
08/03/07 13:55

Notes and Definitions

DET Analyte DETECTED
ND Analyte NOT DETECTED at or above the reporting limit or MDL, if MDL is specified
NR Not Reported
dry Sample results reported on a dry weight basis
RPD Relative Percent Difference

TEST AMERICA SAMPLE RECEIPT LOG

CLIENT NAME: Arco 771
 REC. BY (PRINT) A.M.
 WORKORDER: MQ60684

DATE REC'D AT LAB: 7/18/07
 TIME REC'D AT LAB: 7:18:07 1930
 DATE LOGGED IN: 7/21/07

For Regulatory Purposes?
 DRINKING WATER YES / NO
 WASTE WATER YES / NO

CIRCLE THE APPROPRIATE RESPONSE	LAB SAMPLE #	CLIENT ID	CONTAINER DESCRIPTION	PRESERVATIVE	pH	SAMPLE MATRIX	DATE SAMPLED	REMARKS: CONDITION (ETC.)
1. Custody Seal(s) Present / <input checked="" type="radio"/> Absent Intact / Broken*								See COC 7/18/07 A.M.
2. Chain-of-Custody Present / <input checked="" type="radio"/> Absent*								
3. Traffic Reports or Packing List: Present / <input checked="" type="radio"/> Absent								
4. Airbill: Airbill / Sticker Present / <input checked="" type="radio"/> Absent								
5. Airbill #:								
6. Sample Labels: Present / Absent								
7. Sample IDs: <input checked="" type="radio"/> Listed / Not Listed on Chain-of-Custody								
8. Sample Condition: <input checked="" type="radio"/> Intact / Broken* / Leaking*								
9. Does information on chain-of-custody, traffic reports and sample labels agree? <input checked="" type="radio"/> Yes / No*								
10. Sample received within hold time? <input checked="" type="radio"/> Yes / No*								
11. Adequate sample volume received? <input checked="" type="radio"/> Yes / No*								
12. Proper preservatives used? <input checked="" type="radio"/> Yes / No*								
13. Trip <input checked="" type="radio"/> Blank / Temp <input checked="" type="radio"/> Blank Received? (circle which, if yes) <input checked="" type="radio"/> Yes / No*								
14. Read Temp: <u>2.4°C</u> Corrected Temp: <u>↓</u> Is corrected temp 4 +/-2°C? <input checked="" type="radio"/> Yes / No**								

(Acceptance range for samples requiring thermal pres.)
 **Exception (if any): METALS / DFF ON ICE or Problem COC

*IF CIRCLED, CONTACT PROJECT MANAGER AND ATTACH RECORD OF RESOLUTION.

APPENDIX B

GEOTRACKER UPLOAD CONFIRMATION

12

Electronic Submittal Information

[Main Menu](#) | [View/Add Facilities](#) | [Upload EDD](#) | [Check EDD](#)

UPLOADING A GEO_WELL FILE

**Processing is complete. No errors were found!
Your file has been successfully submitted!**

Submittal Title:	3Q07 GEO_WELL
Facility Global ID:	T0600100113
Facility Name:	ARCO #00771
Submittal Date/Time:	9/19/2007 11:45:08 AM
Confirmation Number:	7321185052

[Back to Main Menu](#)

Logged in as BROADBENT-C
(CONTRACTOR)

[CONTACT SITE ADMINISTRATOR.](#)

Electronic Submittal Information

[Main Menu](#) | [View/Add Facilities](#) | [Upload EDD](#) | [Check EDD](#)

Your EDF file has been successfully uploaded!

Confirmation Number: 7041110932

Date/Time of Submittal: 9/19/2007 11:39:52 AM

Facility Global ID: T0600100113

Facility Name: ARCO #00771

Submittal Title: 3Q07 GW Monitoring

Submittal Type: GW Monitoring Report

Click [here](#) to view the detections report for this upload.

ARCO #00771 899 RINCON LIVERMORE, CA 94550	Regional Board - Case #: 01-0121 SAN FRANCISCO BAY RWQCB (REGION 2) Local Agency (lead agency) - Case #: RO0000200 ALAMEDA COUNTY LOP - (SP)
---	---

<u>CONF #</u>	<u>TITLE</u>	<u>QUARTER</u>
7041110932	3Q07 GW Monitoring	Q3 2007
<u>SUBMITTED BY</u>	<u>SUBMIT DATE</u>	<u>STATUS</u>
Broadbent & Associates, Inc.	9/19/2007	PENDING REVIEW

SAMPLE DETECTIONS REPORT

# FIELD POINTS SAMPLED	8
# FIELD POINTS WITH DETECTIONS	4
# FIELD POINTS WITH WATER SAMPLE DETECTIONS ABOVE MCL	4
SAMPLE MATRIX TYPES	WATER

METHOD QA/QC REPORT

METHODS USED	8260FA,8260TPH
TESTED FOR REQUIRED ANALYTES?	Y
LAB NOTE DATA QUALIFIERS	N

QA/QC FOR 8021/8260 SERIES SAMPLES

TECHNICAL HOLDING TIME VIOLATIONS	0
METHOD HOLDING TIME VIOLATIONS	0
LAB BLANK DETECTIONS ABOVE REPORTING DETECTION LIMIT	0
LAB BLANK DETECTIONS	0
DO ALL BATCHES WITH THE 8021/8260 SERIES INCLUDE THE FOLLOWING?	
- LAB METHOD BLANK	Y
- MATRIX SPIKE	N
- MATRIX SPIKE DUPLICATE	N
- BLANK SPIKE	Y
- SURROGATE SPIKE	Y

WATER SAMPLES FOR 8021/8260 SERIES

MATRIX SPIKE / MATRIX SPIKE DUPLICATE(S) % RECOVERY BETWEEN 65-135%	Y
MATRIX SPIKE / MATRIX SPIKE DUPLICATE(S) RPD LESS THAN 30%	Y
SURROGATE SPIKES % RECOVERY BETWEEN 85-115%	Y
BLANK SPIKE / BLANK SPIKE DUPLICATES % RECOVERY BETWEEN 70-130%	Y

SOIL SAMPLES FOR 8021/8260 SERIES

MATRIX SPIKE / MATRIX SPIKE DUPLICATE(S) % RECOVERY BETWEEN 65-135% n/a
MATRIX SPIKE / MATRIX SPIKE DUPLICATE(S) RPD LESS THAN 30% n/a
SURROGATE SPIKES % RECOVERY BETWEEN 70-125% n/a
BLANK SPIKE / BLANK SPIKE DUPLICATES % RECOVERY BETWEEN 70-130% n/a

FIELD QC SAMPLES

<u>SAMPLE</u>	<u>COLLECTED</u>	<u>DETECTIONS > REPD</u>
QCTB SAMPLES	N	0
QCEB SAMPLES	N	0
QCAB SAMPLES	N	0

Logged in as BROADBENT-C (CONTRACTOR)

CONTACT SITE ADMINISTRATOR.