

ENVIRONMENTAL
PROTECTION

00 APR 26 AM 8:54



Chevron

Chevron U.S.A. Products Company
6001 Bollinger Canyon Rd. Bldg. L
P. O. Box 6004
San Ramon, CA 94583-0804

Site Assessment and
Remediation Group
Phone (510) 842-2500
Fax (510) 842-2570

Date: April 24, 2000
To: Distribution
Re: Groundwater Monitoring Report

The enclosed groundwater monitoring report has been properly reviewed by a Chevron authorized representative. Agency guidelines have been followed. Blaine Tech Services is authorized to distribute the report directly to interested parties.

If you have any questions, please call me at (510) 842-3695.

Sincerely,

A handwritten signature in cursive script that reads "Brett L. Hunter".

Brett Hunter
Site Assessment and Remediation
Project Manager

BLAINE
TECH SERVICES, INC.



1680 ROGERS AVENUE
SAN JOSE, CA 95112-1105
(408) 573-7771 FAX
(408) 573-0555 PHONE
CONTRACTOR'S LICENSE #746684
www.blainetech.com

April 21, 2000

Brett Hunter
Chevron U.S.A. Products Company
P.O. Box 6004
San Ramon, CA 94583-0904

1st Quarter 2000 Monitoring at 9-0290

First Quarter 2000 Groundwater Monitoring at
Chevron Service Station Number 9-0290
1802 Webster Street
Alameda, CA

Monitoring Performed on February 21, 2000

Groundwater Sampling Report 000221-N-1

This report covers the routine monitoring of groundwater wells at this Chevron facility. Blaine Tech Services, Inc.'s work at the site includes inspection, gauging, evacuation, purgewater containment, sample collection and sample handling in accordance with standard procedures that conform to Regional Water Quality Control Board requirements.

Routine field data collection includes depth to water, total well depth, thickness of any separate immiscible layer, water column volume, calculated volume of a three-case volume purge, elapsed evacuation time, total volume of water removed, and standard water parameter instrument readings. Sample material is collected, contained, stored, and transported to the laboratory in conformance with EPA standards. Purgewater is, likewise, collected and transported to McKittrick Waste Treatment Site for disposal.

Basic field information is presented alongside analytical values excerpted from the laboratory report in the cumulative table of **WELL DATA AND ANALYTICAL RESULTS**. The full analytical report for the most recent samples is located in the **Analytical Appendix**. The table also contains new groundwater elevation calculations taken from the computer plotted gradient map which is located in the **Professional Engineering Appendix**.

At a minimum, Blaine Tech Services, Inc. field personnel are certified upon completion of a forty-hour Hazardous Materials and Emergency Response training course per 29 CFR 1910.120. Field personnel are also enrolled in annual eight hour refresher courses.

Blaine Tech Services, Inc. conducts sampling and documentation assignments of this type as an independent third party. In order to avoid compromising the objectivity necessary for the proper and disinterested performance of this work, Blaine Tech Services, Inc. concentrates on objective data collection and does not participate in the interpretation of analytical results, the definition of geological or hydrological conditions, the formulation of recommendations, or the marketing of remedial systems.

Please call if you have any questions.

Yours truly,

A handwritten signature in black ink, appearing to read 'Scott Boor', written over a horizontal line.

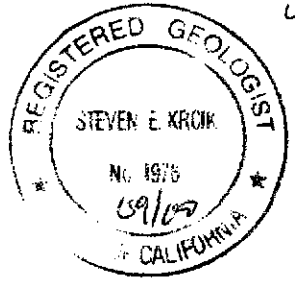
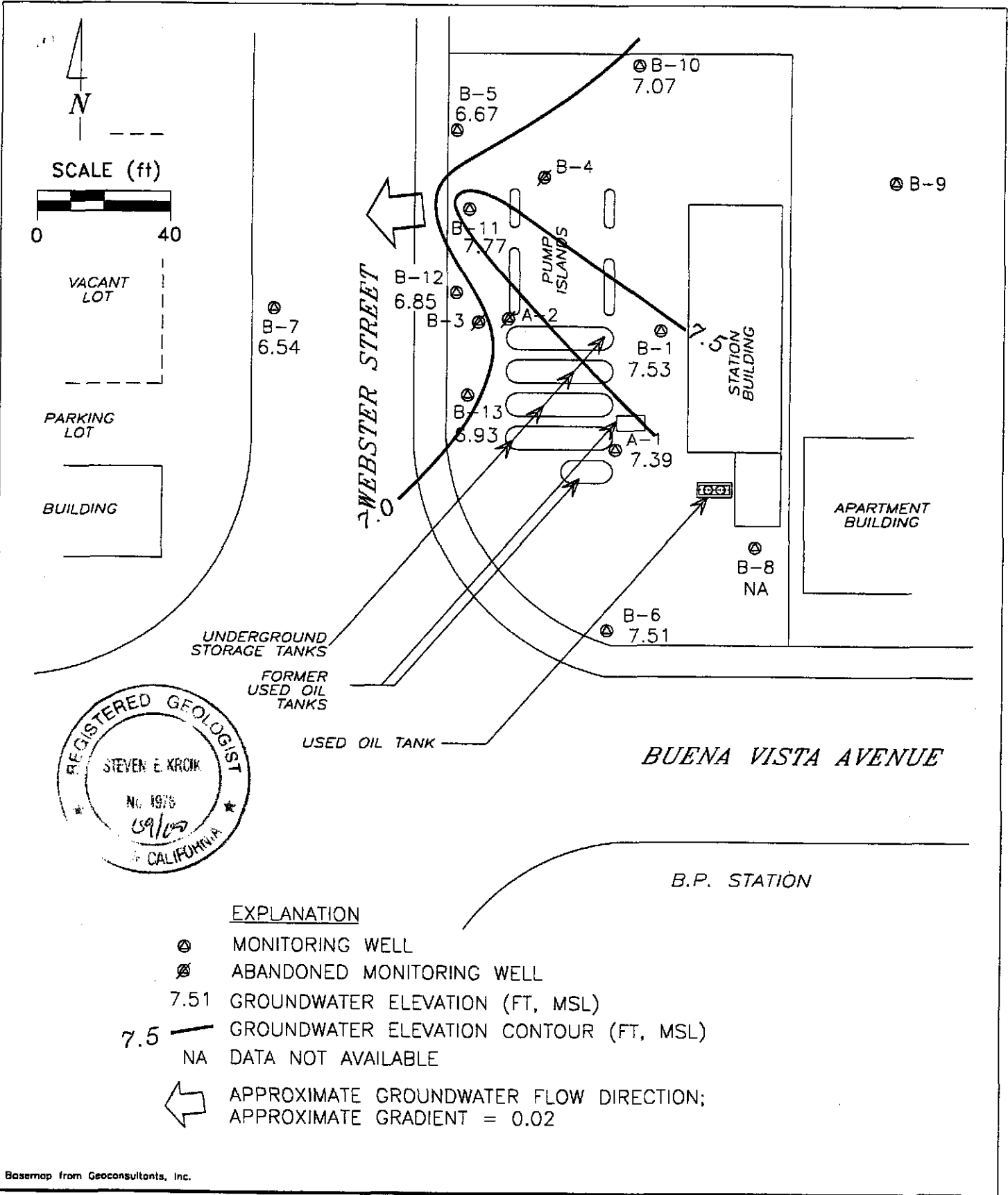
Scott Boor
Project Coordinator

SDB/pb

attachments: Professional Engineering Appendix
Cumulative Table of Well Data and Analytical Results
Analytical Appendix
Field Data Sheets

cc: Eva Chu, Alameda County Health Care Services
Arnold Cherry
Greg Gurs, Gettler-Ryan, Inc.
Bill Scudder, Chevron Products Company (w/o enclosure)

Professional Engineering Appendix



Basemap from Geoconsultants, Inc.

PREPARED BY

Chevron Station 9-0290
 1802 Webster Street
 Alameda, California

**GROUNDWATER ELEVATION CONTOUR MAP,
 FEBRUARY 21, 2000**

FIGURE:
1
 PROJECT:
 DAC04

Table of Well Data and Analytical Results

Cumulative Table of Well Data and Analytical Results

Vertical Measurements are in feet.

Volumetric Measurements are in gallons.

Analytical results are in parts per billion (ppb)

DATE	Well Head Elev.	Ground Water Elev.	Depth To Water	SPH Thickness	SPH Removed	Total SPH Removed	Notes	TPH-Gasoline	Benzene	Toluene	Ethyl-Benzene	Xylene	TOG	TPH-Diesel	MTBE
A-1															
09/20/91	8.13	0.48	9.23	1.58	--	--	--	--	--	--	--	--	--	--	--
10/09/91	8.13	1.46	6.67	0.00	--	--	--	--	--	--	--	--	--	--	--
10/17/91	8.13	1.43	7.28	0.58	--	--	--	--	--	--	--	--	--	--	--
10/23/91	8.13	1.36	7.42	0.65	--	--	--	--	--	--	--	--	--	--	--
11/01/91	8.13	1.49	7.14	0.50	--	--	--	--	--	--	--	--	--	--	--
11/07/91	8.13	1.50	7.14	0.51	--	--	--	--	--	--	--	--	--	--	--
11/15/91	8.13	1.47	7.19	0.53	--	--	--	--	--	--	--	--	--	--	--
11/21/91	8.13	1.28	7.28	0.54	--	--	--	--	--	--	--	--	--	--	--
12/12/91	8.13	1.29	7.33	0.49	--	--	--	--	--	--	--	--	--	--	--
12/30/91	8.13	1.73	6.76	0.36	--	--	--	--	--	--	--	--	--	--	--
01/13/92	8.13	2.21	6.29	0.37	--	--	--	--	--	--	--	--	--	--	--
01/22/92	8.13	2.15	6.43	0.45	--	--	--	--	--	--	--	--	--	--	--
02/12/92	8.13	2.21	6.30	0.38	--	--	--	--	--	--	--	--	--	--	--
03/09/92	8.13	3.14	5.30	0.31	--	--	--	--	--	--	--	--	--	--	--
04/10/92	8.13	2.83	5.37	0.07	--	--	--	--	--	--	--	--	--	--	--
05/18/92	8.13	2.39	6.14	0.40	--	--	--	--	--	--	--	--	--	--	--
01/06/93	8.13	--	--	--	--	--	--	--	--	--	--	--	--	--	--
02/03/93	8.13	--	--	--	--	--	--	--	--	--	--	--	--	--	--
04/23/93	11.56	6.19	5.85	0.60	--	--	--	--	--	--	--	--	--	--	--
06/11/93	11.56	--	--	--	--	2.000	--	--	--	--	--	--	--	--	--
06/15/93	11.56	--	--	--	--	0.130	--	--	--	--	--	--	--	--	--
06/18/93	11.56	--	--	--	--	0.130	--	--	--	--	--	--	--	--	--
06/22/93	11.56	--	--	--	--	0.500	--	--	--	--	--	--	--	--	--
06/29/93	11.56	--	--	--	--	--	--	--	--	--	--	--	--	--	--
07/09/93	11.56	--	--	--	--	2.760	--	--	--	--	--	--	--	--	--
07/15/93	11.56	--	--	--	--	2.760	--	--	--	--	--	--	--	--	--
07/19/93	11.56	5.54	6.23	0.26	--	2.000	--	--	--	--	--	--	--	--	--
07/20/93	11.56	--	--	--	--	4.760	--	--	--	--	--	--	--	--	--
07/27/93	11.56	--	--	--	--	4.760	--	--	--	--	--	--	--	--	--
08/06/93	11.56	--	--	--	--	4.760	--	--	--	--	--	--	--	--	--
08/10/93	11.56	--	--	--	--	4.760	--	--	--	--	--	--	--	--	--
08/16/93	11.56	--	--	--	--	4.760	--	--	--	--	--	--	--	--	--
09/16/93	11.56	--	--	--	--	4.760	--	--	--	--	--	--	--	--	--
09/24/93	11.56	--	--	--	--	4.760	--	--	--	--	--	--	--	--	--

CONTINUED ON NEXT PAGE

Cumulative Table of Well Data and Analytical Results

Vertical Measurements are in feet.

Volumetric Measurements are in gallons.

Analytical results are in parts per billion (ppb)

DATE	Well Head Elev.	Ground Water Elev.	Depth To Water	SPH Thickness	SPH Removed	Total SPH Removed	Notes	TPH-Gasoline	Benzene	Toluene	Ethyl-Benzene	Xylene	TOG	TPH-Diesel	MTBE
A-1 (CONT'D)															
10/01/93	11.56	--	--	--	--	4.760	--	--	--	--	--	--	--	--	--
10/07/93	11.56	--	--	--	--	4.760	--	--	--	--	--	--	--	--	--
10/13/93	11.56	--	--	--	--	4.760	--	--	--	--	--	--	--	--	--
10/19/93	11.56	--	--	0.10	--	4.760	--	--	--	--	--	--	--	--	--
10/20/93	11.56	--	--	--	--	4.760	--	--	--	--	--	--	--	--	--
10/28/93	11.56	--	--	--	--	4.760	--	--	--	--	--	--	--	--	--
11/12/93	11.56	--	--	--	--	4.760	--	--	--	--	--	--	--	--	--
11/19/93	11.56	--	--	--	--	4.760	--	--	--	--	--	--	--	--	--
11/30/93	11.56	--	--	--	--	4.760	--	--	--	--	--	--	--	--	--
12/10/93	11.56	--	--	--	--	4.760	--	--	--	--	--	--	--	--	--
12/16/93	11.56	--	--	--	--	4.760	--	--	--	--	--	--	--	--	--
12/23/93	11.56	--	--	--	--	4.760	--	--	--	--	--	--	--	--	--
12/29/93	11.56	--	--	--	--	4.760	--	--	--	--	--	--	--	--	--
01/03/94	11.56	--	--	--	--	4.760	--	--	--	--	--	--	--	--	--
01/17/94	11.56	--	--	--	--	4.760	--	--	--	--	--	--	--	--	--
01/26/94	11.56	--	--	--	--	4.760	--	--	--	--	--	--	--	--	--
02/07/94	11.56	--	--	--	--	4.760	--	--	--	--	--	--	--	--	--
02/11/94	11.56	--	--	--	--	4.760	--	--	--	--	--	--	--	--	--
02/18/94	11.56	--	--	--	--	4.760	--	--	--	--	--	--	--	--	--
02/25/94	11.56	--	--	--	--	4.760	--	--	--	--	--	--	--	--	--
03/04/94	11.56	--	--	--	--	4.760	--	--	--	--	--	--	--	--	--
03/11/94	11.56	--	--	--	--	4.760	--	--	--	--	--	--	--	--	--
03/16/94	11.56	--	--	--	--	4.760	--	--	--	--	--	--	--	--	--
03/25/94	11.56	--	--	--	--	4.760	--	--	--	--	--	--	--	--	--
04/01/94	11.56	--	--	--	--	4.760	--	--	--	--	--	--	--	--	--
08/18/94	11.56	--	--	--	--	4.760	--	--	--	--	--	--	--	--	--
11/30/94	11.56	--	--	--	--	6.760	--	--	--	--	--	--	--	--	--
02/15/95	11.56	--	4.79	--	--	6.760	--	--	--	--	--	--	--	--	--
05/01/95	11.56	--	--	--	--	6.760	--	--	--	--	--	--	--	--	--
08/04/95	11.56	--	--	--	--	6.760	--	--	--	--	--	--	--	--	--
11/29/95	11.56	5.24	6.38	0.08	0.026	6.786	--	--	--	--	--	--	--	--	--
02/08/96	11.56	7.03	4.57	0.05	--	6.790	--	--	--	--	--	--	--	--	--
05/08/96	11.56	6.29	5.49	0.28	--	6.790	--	--	--	--	--	--	--	--	--
08/23/96	11.56	5.31	6.43	0.22	--	6.790	--	--	--	--	--	--	--	--	--
12/12/96	11.56	6.37	5.53	0.42	0.053	6.843	--	--	--	--	--	--	--	--	--

CONTINUED ON NEXT PAGE

Cumulative Table of Well Data and Analytical Results

Vertical Measurements are in feet.

Volumetric Measurements are in gallons.

Analytical results are in parts per billion (ppb)

DATE	Vertical Measurements are in feet.			Volumetric Measurements are in gallons.				Analytical results are in parts per billion (ppb)							
	Well Head Elev.	Ground Water Elev.	Depth To Water	SPH Thickness	SPH Removed	Total SPH Removed	Notes	TPH-Gasoline	Benzene	Toluene	Ethyl-Benzene	Xylene	TOG	TPH-Diesel	MTBE
A-1 (CONT'D)															
02/10/97	11.56	7.25	4.45	0.17	0.079	6.922	--	--	--	--	--	--	--	--	--
05/01/97	11.56	6.11	5.51	0.08	0.053	6.975	--	--	--	--	--	--	--	--	--
08/05/97	11.56	5.68	5.96	0.10	0.066	7.041	--	--	--	--	--	--	--	--	--
10/28/97	11.56	5.56	6.05	0.06	0.026	7.067	--	--	--	--	--	--	--	--	--
02/04/98	11.56	8.39	3.20	0.04	0.026	7.093	--	--	--	--	--	--	--	--	--
06/03/98	11.56	7.02	4.56	0.03	0.021	7.114	--	--	--	--	--	--	--	--	--
07/29/98	11.56	7.15	4.44	0.04	0.040	7.154	--	--	--	--	--	--	--	--	--
11/30/98	11.56	6.23	5.61	0.35	0.012	7.166	--	--	--	--	--	--	--	--	--
02/24/99	11.56	7.63	4.41	0.60	0.066	7.232	--	--	--	--	--	--	--	--	--
05/06/99	11.56	6.89	4.67	--	--	7.232	--	580	13.4	<2.0	4.68	58	--	9500*	165
08/30/99	11.56	5.52	6.04	--	--	7.232	**	615	12	3.45	3.8	44	--	22,000*	95.5
11/17/99	11.56	5.70	5.89	0.04	0.08	7.312	--	--	--	--	--	--	--	--	--
02/21/00	11.56	7.39	4.23	0.08	0.01	7.322	--	--	--	--	--	--	--	--	--

* Chromatogram pattern indicates unidentified hydrocarbons.

** See Table of Additional Analyses.

Cumulative Table of Well Data and Analytical Results

Vertical Measurements are in feet.

Volumetric Measurements are in gallons.

Analytical results are in parts per billion (ppb)

DATE	Well Head Elev.	Ground Water Elev.	Depth To Water	SPH Thickness	SPH Removed	Total SPH Removed	Notes	TPH-Gasoline	Benzene	Toluene	Ethyl-Benzene	Xylene	TOG	TPH-Diesel	MTBE
A-2															
09/20/91	8.00	0.27	7.73	0.00	--	--	--	8100	860	14	110	53	--	5100	--
10/09/91	8.00	1.39	6.61	0.00	--	--	--	--	--	--	--	--	--	--	--
10/17/91	8.00	1.34	6.66	0.00	--	--	--	--	--	--	--	--	--	--	--
10/23/91	8.00	1.29	6.80	0.09	--	--	--	--	--	--	--	--	--	--	--
11/01/91	8.00	1.45	6.63	0.15	--	--	--	--	--	--	--	--	--	--	--
11/07/91	8.00	1.45	6.64	0.21	--	--	--	--	--	--	--	--	--	--	--
11/15/91	8.00	1.38	6.81	0.19	--	--	--	--	--	--	--	--	--	--	--
11/21/91	8.00	1.31	6.93	0.24	--	--	--	--	--	--	--	--	--	--	--
12/12/91	8.00	1.24	6.97	0.15	--	--	--	--	--	--	--	--	--	--	--
12/30/91	8.00	1.70	6.54	0.24	--	--	--	--	--	--	--	--	--	--	--
01/13/92	8.00	2.16	5.92	0.08	--	--	--	--	--	--	--	--	--	--	--
01/22/92	8.00	2.00	6.01	0.10	--	--	--	--	--	--	--	--	--	--	--
02/12/92	8.00	2.20	6.06	0.26	--	--	--	--	--	--	--	--	--	--	--
03/09/92	8.00	3.11	4.93	0.04	--	--	--	--	--	--	--	--	--	--	--
04/10/92	8.00	2.80	5.20	<0.01	--	--	--	--	--	--	--	--	--	--	--
05/18/92	8.00	2.36	5.66	0.02	--	--	--	--	--	--	--	--	--	--	--
01/06/93	8.00	--	--	--	--	--	--	--	--	--	--	--	--	--	--
02/03/93	8.00	3.20	4.98	0.22	--	--	--	--	--	--	--	--	--	--	--
04/23/93	11.46	6.24	5.36	0.18	--	--	--	--	--	--	--	--	--	--	--
06/11/93	11.46	--	--	--	--	0.13	1.000	--	--	--	--	--	--	--	--
06/15/93	11.46	--	--	--	--	0.13	1.130	--	--	--	--	--	--	--	--
06/18/93	11.46	--	--	--	--	0.26	1.390	--	--	--	--	--	--	--	--
06/22/93	11.46	--	--	--	--	0.50	1.890	--	--	--	--	--	--	--	--
06/29/93	11.46	--	--	--	--	--	1.890	--	--	--	--	--	--	--	--
07/09/93	11.46	--	--	--	--	--	1.890	--	--	--	--	--	--	--	--
07/15/93	11.46	--	--	--	--	--	1.890	--	--	--	--	--	--	--	--
07/19/93	11.46	5.53	6.79	1.07	--	--	1.890	--	--	--	--	--	--	--	--
07/20/93	11.46	--	--	--	--	--	1.890	--	--	--	--	--	--	--	--
07/27/93	11.46	--	--	--	--	--	1.890	--	--	--	--	--	--	--	--
08/06/93	11.46	--	--	--	--	--	1.890	--	--	--	--	--	--	--	--
08/10/93	11.46	--	--	--	--	--	1.890	--	--	--	--	--	--	--	--
08/16/93	11.46	--	--	--	--	--	1.890	--	--	--	--	--	--	--	--
09/16/93	11.46	--	--	--	--	--	1.890	--	--	--	--	--	--	--	--
09/24/93	11.46	--	--	--	--	--	1.890	--	--	--	--	--	--	--	--

CONTINUED ON NEXT PAGE

Cumulative Table of Well Data and Analytical Results

Vertical Measurements are in feet.

Volumetric Measurements are in gallons.

Analytical results are in parts per billion (ppb)

DATE	Well Head Elev.	Ground Water Elev.	Depth To Water	SPH Thickness	SPH Removed	Total SPH Removed	Notes	TPH-Gasoline	Benzene	Toluene	Ethyl-Benzene	Xylene	TOG	TPH-Diesel	MTBE
A-2 (CONT'D)															
10/01/93	11.46	--	--	--	--	1.890	--	--	--	--	--	--	--	--	--
10/07/93	11.46	--	--	--	--	1.890	--	--	--	--	--	--	--	--	--
10/13/93	11.46	--	--	--	--	1.890	--	--	--	--	--	--	--	--	--
10/19/93	11.46	6.23	6.36	1.41	--	1.890	--	--	--	--	--	--	--	--	--
10/20/93	11.46	--	--	--	--	1.890	--	--	--	--	--	--	--	--	--
10/28/93	11.46	--	--	--	--	1.890	--	--	--	--	--	--	--	--	--
11/12/93	11.46	--	--	--	--	1.890	--	--	--	--	--	--	--	--	--
11/19/93	11.46	--	--	--	--	1.890	--	--	--	--	--	--	--	--	--
11/30/93	11.46	--	--	--	--	1.890	--	--	--	--	--	--	--	--	--
12/10/93	11.46	--	--	--	--	1.890	--	--	--	--	--	--	--	--	--
12/16/93	11.46	--	--	--	--	1.890	--	--	--	--	--	--	--	--	--
12/23/93	11.46	--	--	--	--	1.890	--	--	--	--	--	--	--	--	--
12/29/93	11.46	--	--	--	--	1.890	--	--	--	--	--	--	--	--	--
01/03/94	11.46	--	--	--	--	1.890	--	--	--	--	--	--	--	--	--
01/17/94	11.46	--	--	--	--	1.890	--	--	--	--	--	--	--	--	--
01/26/94	11.46	--	--	--	--	1.890	--	--	--	--	--	--	--	--	--
02/07/94	11.46	--	--	--	--	1.890	--	--	--	--	--	--	--	--	--
02/11/94	11.46	--	--	--	--	1.890	--	--	--	--	--	--	--	--	--
02/18/94	11.46	--	--	--	--	1.890	--	--	--	--	--	--	--	--	--
02/25/94	11.46	--	--	--	--	1.890	--	--	--	--	--	--	--	--	--
03/04/94	11.46	--	--	--	--	1.890	--	--	--	--	--	--	--	--	--
03/11/94	11.46	--	--	--	--	1.890	--	--	--	--	--	--	--	--	--
03/16/94	11.46	--	--	--	--	1.890	--	--	--	--	--	--	--	--	--
03/25/94	11.46	--	--	--	--	1.890	--	--	--	--	--	--	--	--	--
04/01/94	11.46	--	--	--	--	1.890	Destroyed	--	--	--	--	--	--	--	--

Cumulative Table of Well Data and Analytical Results

Vertical Measurements are in feet.

Volumetric Measurements are in gallons.

Analytical results are in parts per billion (ppb)

DATE	Well Head Elev.	Ground Water Elev.	Depth To Water	SPH Thickness	SPH Removed	Total SPH Removed	Notes	TPH-Gasoline	Benzene	Toluene	Ethyl-Benzene	Xylene	TOG	TPH-Diesel	MTBE
B-1															
04/23/93	12.12	6.19	5.93	--	--	--	--	13,000	4900	22	250	47	--	8300	--
07/19/93	12.12	5.46	6.66	--	--	--	--	3300	1200	16	24	<30	--	1600	--
10/19/93	12.12	5.04	7.08	--	--	--	--	2300	730	18	14	31	--	550	--
01/17/94	12.12	5.39	6.73	--	--	--	--	22,000	6500	170	210	430	--	<50	--
08/18/94	12.12	5.27	6.85	--	--	--	Inaccessible	--	--	--	--	--	--	--	--
11/30/94	12.12	6.11	6.01	--	--	--	--	1500	250	17	7.5	19	<5.0*	3200**	--
02/15/95	12.12	6.75	5.37	--	--	--	--	1000	160	<2.0	4.6	2.6	--	1300**	--
05/01/95	12.12	7.00	5.12	--	--	--	--	140	20	0.52	2.0	0.67	--	2600***	--
08/04/95	12.12	6.62	5.50	--	--	--	--	6700	1400	<20	<20	<20	--	4900***	--
11/29/95	12.12	6.27	5.85	--	--	--	--	9200	2200	<25	<25	25	--	5000***	8300
02/08/96	12.12	8.12	4.00	--	--	--	--	1500	190	<5.0	<5.0	<5.0	--	1300***	2300
05/08/96	12.12	7.32	4.80	--	--	--	--	3700	650	<10	24	16	--	2900***	2300
08/23/96	12.12	6.58	5.54	--	--	--	--	3200	500	<20	<20	<20	--	2600	4900
12/12/96	12.12	7.22	4.90	--	--	--	--	2500	380	<25	<25	25	--	3400+	8600
02/10/97	12.12	7.53	4.59	--	--	--	--	2200	270	11	8.8	13	--	2100***	3400
05/01/97	12.12	6.46	5.66	--	--	--	--	1200	70	5.8	<5.0	7.2	--	1300***	2000
08/05/97	12.12	5.68	6.44	--	--	--	--	<1000	86	<10	<10	<10	--	1500***	3800
10/28/97	12.12	5.69	6.43	--	--	--	--	1400	73	6.5	6.8	9.0	--	2000***	2900
02/04/98	12.12	9.11	3.01	--	--	--	--	1500	4.5	1.7	<0.5	2.2	--	1200***	1900
02/12/98	12.12	8.33	3.79	--	--	--	--	--	--	--	--	--	--	--	--
06/03/98	12.12	7.23	4.89	--	--	--	--	<50	<0.5	<0.5	<0.5	<0.5	--	970***	1400
07/29/98	12.12	6.37	5.75	--	--	--	++	850	27	<0.5	4.0	2.9	--	1100***	770
07/29/98	12.12	6.37	5.75	--	--	--	Confirmation run	--	--	--	--	--	--	--	1200
11/30/98	12.12	6.44	5.68	--	--	--	--	543	<5.0	<5.0	<5.0	<5.0	--	1490	2220
02/24/99	12.12	7.83	4.29	--	--	--	--	390	1.6	0.57	2.8	2.5	--	1400***	2600
05/06/99	12.12	7.11	5.01	--	--	--	--	239	4.02	<0.5	3.87	1.97	--	340***	197
08/30/99	12.12	5.91	6.21	--	--	--	--	739	22.4	3.45	5.62	3.27	--	1570+++	1110
11/17/99	12.12	5.98	6.14	--	--	--	--	907	66.4	3.82	4.39	4.75	--	1730	2480
02/21/00	12.12	7.53	4.59	--	--	--	--	679	10.5	<1.0	3.84	3.21	--	1000***	2330

* Analytical values are in parts per million (ppm).

** Chromatogram pattern indicates a non-diesel mix.

*** Chromatogram pattern indicates an unidentified hydrocarbon.

+ Chromatogram pattern indicates an unidentified hydrocarbon and weathered diesel.

++ See Table of Additional Analyses.

+++ Hydrocarbon pattern appears to be weathered.

Cumulative Table of Well Data and Analytical Results

Vertical Measurements are in feet.

Volumetric Measurements are in gallons.

Analytical results are in parts per billion (ppb)

DATE	Well Head Elev.	Ground Water Elev.	Depth To Water	SPH Thickness	SPH Removed	Total SPH Removed	Notes	TPH-Gasoline	Benzene	Toluene	Ethyl-Benzene	Xylene	TOG	TPH-Diesel	MTBE
B-3															
09/20/91	8.01	1.08	6.94	0.01	--	--	--	--	--	--	--	--	--	--	--
10/09/91	8.01	1.66	6.35	--	--	--	--	--	--	--	--	--	--	--	--
10/17/91	8.01	1.57	6.44	--	--	--	--	--	--	--	--	--	--	--	--
10/23/91	8.01	1.53	6.84	--	--	--	--	--	--	--	--	--	--	--	--
11/01/91	8.01	1.70	6.31	--	--	--	--	--	--	--	--	--	--	--	--
11/07/91	8.01	1.69	6.32	--	--	--	--	--	--	--	--	--	--	--	--
11/15/91	8.01	1.62	6.39	--	--	--	--	--	--	--	--	--	--	--	--
11/21/91	8.01	1.57	6.44	--	--	--	--	--	--	--	--	--	--	--	--
12/12/91	8.01	1.19	6.82	<0.01	--	--	--	--	--	--	--	--	--	--	--
12/30/91	8.01	1.64	6.37	--	--	--	--	--	--	--	--	--	--	--	--
01/13/92	8.01	2.07	5.94	--	--	--	--	--	--	--	--	--	--	--	--
01/22/92	8.01	2.02	5.99	--	--	--	--	--	--	--	--	--	--	--	--
02/12/92	8.01	2.19	5.82	<0.01	--	--	--	--	--	--	--	--	--	--	--
03/09/92	8.01	2.91	5.10	--	--	--	--	--	--	--	--	--	--	--	--
04/10/92	8.01	2.65	5.36	--	--	--	--	--	--	--	--	--	--	--	--
05/18/92	8.01	2.29	5.72	--	--	--	--	6200	550	58	13	51	<5000	250	--
01/06/93	8.01	2.51	5.50	--	--	--	Sheen	5400	490	54	51	82	--	10,000	--
02/03/93	8.01	--	--	--	--	--	--	--	--	--	--	--	--	--	--
04/23/93	11.42	6.10	5.32	--	--	--	--	18,000	540	69	47	120	--	6400	--
07/29/93	11.42	5.48	5.94	--	--	--	--	40,000	780	69	49	150	--	4000	--
10/19/93	11.42	5.10	6.32	--	--	--	--	20,000	520	37	43	100	--	1500	--
01/17/94	11.42	4.47	6.95	--	--	--	Destroyed	3900	430	32	29	82	--	<50	--

Cumulative Table of Well Data and Analytical Results

Vertical Measurements are in feet.

Volumetric Measurements are in gallons.

Analytical results are in parts per billion (ppb)

DATE	Well Head Elev.	Ground Water Elev.	Depth To Water	SPH Thickness	SPH Removed	Total SPH Removed	Notes	TPH-Gasoline	Benzene	Toluene	Ethyl-Benzene	Xylene	TOG	TPH-Diesel	MTBE
B-4															
09/20/91	8.04	1.22	6.82	0.01	--	--	--	19,000	710	160	650	2000	--	1400	--
10/09/91	8.04	1.41	6.63	--	--	--	--	--	--	--	--	--	--	--	--
10/17/91	8.04	1.20	6.84	--	--	--	--	--	--	--	--	--	--	--	--
10/23/91	8.04	1.17	6.87	--	--	--	--	--	--	--	--	--	--	--	--
11/01/91	8.04	1.34	6.70	--	--	--	--	--	--	--	--	--	--	--	--
11/07/91	8.04	1.31	6.73	--	--	--	--	--	--	--	--	--	--	--	--
11/15/91	8.04	1.21	6.83	--	--	--	--	--	--	--	--	--	--	--	--
11/21/91	8.04	1.20	6.84	--	--	--	--	--	--	--	--	--	--	--	--
12/12/91	8.04	1.17	6.87	<0.01	--	--	--	--	--	--	--	--	--	--	--
12/30/91	8.04	1.58	6.46	--	--	--	--	--	--	--	--	--	--	--	--
01/13/92	8.04	2.13	5.91	--	--	--	--	--	--	--	--	--	--	--	--
01/22/92	8.04	2.09	5.95	--	--	--	--	--	--	--	--	--	--	--	--
02/12/92	8.04	2.26	5.78	<0.01	--	--	--	15,000	920	75	520	940	--	860	--
03/09/92	8.04	2.95	5.09	--	--	--	--	--	--	--	--	--	--	--	--
04/10/92	8.04	2.65	5.39	--	--	--	--	--	--	--	--	--	--	--	--
05/18/92	8.04	2.45	5.59	--	--	--	--	19,000	2000	97	560	1200	<5000	<50	--
01/06/93	8.04	2.54	5.50	--	--	--	Sheen	19,000	2000	89	490	740	--	2700	--
02/03/93	8.04	--	--	--	--	--	--	--	--	--	--	--	--	--	--
04/23/93	11.46	6.07	5.39	--	--	--	--	5700	2400	75	380	580	--	2300	--
07/19/93	11.46	5.33	6.13	--	--	--	--	19,000	2400	140	440	620	--	2400	--
10/19/93	11.46	4.95	6.51	--	--	--	--	13,000	1200	84	290	530	--	2100	--
01/17/94	11.46	5.28	6.18	--	--	--	Destroyed	11,000	1900	63	170	290	--	<50	--

Cumulative Table of Well Data and Analytical Results

Vertical Measurements are in feet.

Volumetric Measurements are in gallons.

Analytical results are in parts per billion (ppb)

DATE	Well Head Elev.	Ground Water Elev.	Depth To Water	SPH Thickness	SPH Removed	Total SPH Removed	Notes	TPH-Gasoline	Benzene	Toluene	Ethyl-Benzene	Xylene	TOG	TPH-Diesel	MTBE
B-5															
09/20/91	7.73	2.20	5.53	--	--	--	--	<50	<0.5	<0.5	<0.5	<0.5	--	<50	--
10/09/91	7.73	2.42	5.31	--	--	--	--	--	--	--	--	--	--	--	--
10/17/91	7.73	2.09	5.64	--	--	--	--	--	--	--	--	--	--	--	--
10/23/91	7.73	2.05	5.68	--	--	--	--	--	--	--	--	--	--	--	--
11/01/91	7.73	2.24	5.49	--	--	--	--	--	--	--	--	--	--	--	--
11/07/91	7.73	2.19	5.54	--	--	--	--	--	--	--	--	--	--	--	--
11/15/91	7.73	2.10	5.63	--	--	--	--	--	--	--	--	--	--	--	--
11/21/91	7.73	--	--	--	--	--	--	--	--	--	--	--	--	--	--
12/12/91	7.73	2.05	5.68	--	--	--	--	--	--	--	--	--	--	--	--
12/30/91	7.73	2.54	5.19	--	--	--	--	--	--	--	--	--	--	--	--
01/13/92	7.73	3.07	4.65	--	--	--	--	--	--	--	--	--	--	--	--
01/22/92	7.73	3.03	4.70	--	--	--	--	--	--	--	--	--	--	--	--
02/12/92	7.73	3.38	4.45	--	--	--	--	--	--	--	--	--	--	--	--
03/09/92	7.73	3.68	4.05	--	--	--	--	<50	<0.5	<0.5	<0.5	<0.5	--	<50	--
04/10/92	7.73	3.30	4.43	--	--	--	--	--	--	--	--	--	--	--	--
05/18/92	7.73	3.94	3.79	--	--	--	--	390	39	1.9	11	24	<5000	--	--
01/06/93	7.73	3.39	4.44	--	--	--	Sheen	<50	<0.5	<0.5	<0.5	<0.5	--	<50	--
02/03/93	7.73	--	--	--	--	--	--	--	--	--	--	--	--	--	--
04/23/93	10.18	5.86	4.32	--	--	--	--	<50	<0.5	<0.5	<0.5	<1.5	--	<50	--
07/19/93	10.18	5.15	5.03	--	--	--	--	54	<0.5	0.7	<0.5	<1.5	--	<50	--
10/19/93	10.18	5.08	5.10	--	--	--	--	<50	2.0	4.1	0.6	3.5	--	<50	--
01/07/94	10.18	5.32	4.86	--	--	--	--	<50	<0.5	<0.5	<0.5	<0.5	--	<50	--
08/18/94	10.18	5.04	5.14	--	--	--	--	<50	<0.5	<0.5	<0.5	<0.5	--	<50	--
11/30/94	10.18	5.73	4.45	--	--	--	--	<50	<0.5	<0.5	<0.5	<0.5	--	140*	--
02/15/95	10.18	6.03	4.15	--	--	--	--	<50	<0.5	<0.5	<0.5	<0.5	--	170*	--
05/01/95	10.18	5.75	4.43	--	--	--	--	<50	<0.5	<0.5	<0.5	<0.5	--	190**	--
08/04/95	10.18	5.22	4.96	--	--	--	--	<50	<0.5	<0.5	<0.5	<0.5	--	250**	--
11/29/95	10.18	4.97	5.21	--	--	--	--	140	1.5	<0.5	1.1	<0.5	--	330**	800
02/08/96	10.18	6.38	3.80	--	--	--	--	<200	2.1	<2.0	<2.0	<2.0	--	250**	1100
05/08/96	10.18	5.78	4.40	--	--	--	--	<500	<5.0	<5.0	<5.0	<5.0	--	350**	1400
08/23/96	10.18	5.19	4.99	--	--	--	--	250	6.4	2.1	2.1	4.3	--	990	9300
12/12/96	10.18	5.90	4.28	--	--	--	--	<1000	<10	<10	<10	<10	--	430**	6700

CONTINUED ON NEXT PAGE

* Chromagram pattern indicates a non-diesel mix.

** Chromatogram pattern indicates an unidentified hydrocarbon.

Cumulative Table of Well Data and Analytical Results

Vertical Measurements are in feet.

Volumetric Measurements are in gallons.

Analytical results are in parts per billion (ppb)

DATE	Well Head Elev.	Ground Water Elev.	Depth To Water	SPH Thickness	SPH Removed	Total SPH Removed	Notes	TPH-Gasoline	Benzene	Toluene	Ethyl-Benzene	Xylene	TOG	TPH-Diesel	MTBE
B-5 (CONT'D)															
02/10/97	10.18	6.55	3.63	--	--	--	--	<500	<5.0	<5.0	<5.0	<5.0	--	340**	930
05/01/97	10.18	5.87	4.31	--	--	--	--	<500	<5.0	<5.0	<5.0	<5.0	--	290**	1900
08/05/97	10.18	5.29	4.89	--	--	--	--	<1000	<10	<10	<10	<10	--	710**	6800
10/28/97	10.18	5.18	5.00	--	--	--	--	<500	<5.0	<5.0	<5.0	<5.0	--	880**	7000
02/04/98	10.18	7.65	2.53	--	--	--	--	<50	0.51	<0.5	<0.5	<0.5	--	290**	2100
06/03/98	10.18	6.33	3.85	--	--	--	--	220	2.0	15	2.8	20	--	630**	450
07/29/98	10.18	5.63	4.55	--	--	--	*	<50	1.6	<0.5	<0.5	1.6	--	1100**	4600
07/29/98	10.18	5.63	4.55	--	--	--	Confirmation run	--	--	--	--	--	--	--	6200
11/30/98	10.18	5.81	4.37	--	--	--	--	<50	<0.5	1.91	<0.5	1.09	--	371	202
02/24/99	10.18	6.79	3.39	--	--	--	--	<50	<0.5	<0.5	0.69	3.1	--	512**	25
05/06/99	10.18	6.16	4.02	--	--	--	--	<50	2.27	<0.5	<0.5	<0.5	--	790**	3090
08/30/99	10.18	5.02	5.16	--	--	--	--	<250	4.25	<2.5	<2.5	<2.5	--	1890***	10,400
11/17/99	10.18	5.28	4.90	--	--	--	--	101	4.95	<0.5	<0.5	<0.5	--	1180**	8510
02/21/00	10.18	6.67	3.51	--	--	--	--	<100	<1.0	<1.0	<1.0	<1.0	--	240**	555

* See Table of Additional Analyses.

** Chromatogram pattern indicates an unidentified hydrocarbon.

*** Hydrocarbon pattern in sample appears to be weathered.

Cumulative Table of Well Data and Analytical Results

Vertical Measurements are in feet.

Volumetric Measurements are in gallons.

Analytical results are in parts per billion (ppb)

DATE	Well Head Elev.	Ground Water Elev.	Depth To Water	SPH Thickness	SPH Removed	Total SPH Removed	Notes	TPH-Gasoline	Benzene	Toluene	Ethyl-Benzene	Xylene	TOG	TPH-Diesel	MTBE
B-6															
09/20/91	8.55	1.70	6.85	--	--	--	--	<50	<0.5	<0.5	<0.5	<0.5	--	<50	--
10/09/91	8.55	1.72	6.83	--	--	--	--	--	--	--	--	--	--	--	--
10/17/91	8.55	1.65	6.90	--	--	--	--	--	--	--	--	--	--	--	--
10/23/91	8.55	1.62	6.93	--	--	--	--	--	--	--	--	--	--	--	--
11/01/91	8.55	1.77	6.78	--	--	--	--	--	--	--	--	--	--	--	--
11/07/91	8.55	1.74	6.81	--	--	--	--	--	--	--	--	--	--	--	--
11/15/91	8.55	1.67	6.88	--	--	--	--	--	--	--	--	--	--	--	--
11/21/91	8.55	1.60	6.95	--	--	--	--	--	--	--	--	--	--	--	--
12/12/91	8.55	1.41	7.14	--	--	--	--	--	--	--	--	--	--	--	--
12/30/91	8.55	2.05	6.50	--	--	--	--	--	--	--	--	--	--	--	--
01/13/92	8.55	2.36	6.19	--	--	--	--	--	--	--	--	--	--	--	--
01/22/92	8.55	2.28	6.27	--	--	--	--	--	--	--	--	--	--	--	--
02/12/92	8.55	2.43	6.12	--	--	--	--	<50	<0.5	<0.5	<0.5	<0.5	--	<50	--
03/09/92	8.55	3.27	5.28	--	--	--	--	--	--	--	--	--	--	--	--
04/10/92	8.55	3.07	5.48	--	--	--	--	--	--	--	--	--	--	--	--
05/18/92	8.55	2.65	5.90	--	--	--	--	<50	<0.5	<0.5	<0.5	<0.5	<5000	<50	--
01/06/93	8.55	2.76	5.79	--	--	--	--	<50	<0.5	<0.5	<0.5	<0.5	--	<50	--
02/03/93	8.55	--	--	--	--	--	--	--	--	--	--	--	--	--	--
04/23/93	11.97	6.70	5.27	--	--	--	--	<50	<0.5	<0.5	<0.5	<1.5	--	<50	--
07/19/93	11.97	5.06	6.91	--	--	--	--	74	<0.5	<0.5	<0.5	<1.5	--	<50	--
10/19/93	11.97	5.49	6.48	--	--	--	--	<50	<0.5	0.5	<0.5	2.2	--	<50	--
01/07/94	11.97	5.79	6.18	--	--	--	--	<50	<0.5	<0.5	<0.5	<0.5	--	<50	--
08/18/94	11.97	5.77	6.20	--	--	--	--	<50	<0.5	<0.5	<0.5	<0.5	--	<50	--
11/30/94	11.97	6.52	5.45	--	--	--	--	<50	<0.5	<0.5	<0.5	<0.5	--	230*	--
02/15/95	11.97	7.27	4.70	--	--	--	--	<50	<0.5	<0.5	<0.5	<0.5	--	130*	--
05/01/95	11.97	6.94	5.03	--	--	--	--	<50	<0.5	<0.5	<0.5	<0.5	--	97**	--
08/04/95	11.97	6.15	5.82	--	--	--	--	<50	<0.5	<0.5	<0.5	<0.5	--	350**	--
11/29/95	11.97	5.97	6.00	--	--	--	--	--	--	--	--	--	--	200**	--
02/08/96	11.97	7.27	4.70	--	--	--	--	--	--	--	--	--	--	210**	--
05/08/96	11.97	6.74	5.23	--	--	--	--	--	--	--	--	--	--	250**	--
08/23/96	11.97	5.92	6.05	--	--	--	--	--	--	--	--	--	--	310**	--
12/12/96	11.97	6.65	5.32	--	--	--	--	--	--	--	--	--	--	300**	--

CONTINUED ON NEXT PAGE

* Chromatogram pattern indicates a non-diesel mix.

** Chromatogram pattern indicates an unidentified hydrocarbon.

Cumulative Table of Well Data and Analytical Results

Vertical Measurements are in feet.

Volumetric Measurements are in gallons.

Analytical results are in parts per billion (ppb)

DATE	Well Head Elev.	Ground Water Elev.	Depth To Water	SPH Thickness	SPH Removed	Total SPH Removed	Notes	TPH-Gasoline	Benzene	Toluene	Ethyl-Benzene	Xylene	TOG	TPH-Diesel	MTBE
B-6 (CONT'D)															
02/10/97	11.97	7.60	4.37	--	--	--	--	--	--	--	--	--	--	130**	360
05/01/97	11.97	6.74	5.23	--	--	--	--	--	--	--	--	--	--	260**	2200
08/05/97	11.97	6.22	5.75	--	--	--	--	--	--	--	--	--	--	260**	1800
10/28/97	11.97	5.89	6.08	--	--	--	--	--	--	--	--	--	--	340**	1900
02/04/98	11.97	9.26	2.71	--	--	--	--	--	--	--	--	--	--	280**	1400
06/03/98	11.97	7.49	4.48	--	--	--	--	--	--	--	--	--	--	130**	1200
07/29/98	11.97	6.69	5.28	--	--	--	--	--	--	--	--	--	--	340**	2700
07/29/98	11.97	6.69	5.28	--	--	--	Confirmation run	--	--	--	--	--	--	--	3000
11/30/98	11.97	6.48	5.49	--	--	--	--	655	<5.0	<5.0	<5.0	<5.0	--	2740	2160
02/24/99	11.97	7.79	4.18	--	--	--	--	--	--	--	--	--	--	225**	1500
05/06/99	11.97	6.29	5.68	--	--	--	--	--	--	--	--	--	--	71**	1010
08/30/99	11.97	6.06	5.91	--	--	--	--	--	--	--	--	--	--	356**	4520
11/17/99	11.97	6.01	5.96	--	--	--	--	--	--	--	--	--	--	1960**	5160
02/21/00	11.97	7.51	4.46	--	--	--	--	--	--	--	--	--	--	180**	6920

** Chromatogram pattern indicates an unidentified hydrocarbon.

Cumulative Table of Well Data and Analytical Results

Vertical Measurements are in feet.

Volumetric Measurements are in gallons.

Analytical results are in parts per billion (ppb)

DATE	Well Head Elev.	Ground Water Elev.	Depth To Water	SPH Thickness	SPH Removed	Total SPH Removed	Notes	TPH-Gasoline	Benzene	Toluene	Ethyl-Benzene	Xylene	TOG	TPH-Diesel	MTBE
B-7															
04/23/93	10.54	6.02	4.52	--	--	--	--	<50	<0.5	<0.5	<0.5	<1.5	<50	--	--
07/19/93	10.54	5.50	5.04	--	--	--	--	<50	<0.5	<0.5	<0.5	<1.5	<50	<50	--
10/19/93	10.54	5.14	5.40	--	--	--	--	<50	3.1	0.5	<0.5	0.8	--	<50	--
01/07/94	10.54	5.35	5.19	--	--	--	--	<50	<0.5	<0.5	<0.5	<0.5	--	<50	--
08/18/94	10.54	5.28	5.26	--	--	--	--	<50	<0.5	<0.5	<0.5	1.1	--	<50	--
11/30/94	10.54	5.96	4.58	--	--	--	--	<50	<0.5	<0.5	<0.5	<0.5	--	<50	--
02/15/95	10.54	6.32	4.22	--	--	--	--	<50	<0.5	<0.5	<0.5	<0.5	--	<50	--
05/01/95	10.54	6.04	4.50	--	--	--	--	<50	<0.5	<0.5	<0.5	<0.5	--	53**	--
08/04/95	10.54	5.56	4.98	--	--	--	--	<50	<0.5	<0.5	<0.5	<0.5	--	<50	--
02/12/98	10.54	7.49	3.05	--	--	--	--	<50	<0.5	<0.5	<0.5	<0.5	--	<50	--
06/03/98	10.54	6.59	3.95	--	--	--	Sampled biannually	--	--	--	--	--	--	--	--
07/29/98	10.54	5.99	4.55	--	--	--	--	<50	<0.5	<0.5	<0.5	<0.5	--	--	<2.5
11/30/98	10.54	5.56	4.98	--	--	--	--	--	--	--	--	--	--	--	--
02/24/99	10.54	7.24	3.30	--	--	--	--	<50	<0.5	<0.5	<0.5	<0.5	--	--	<2.5
05/06/99	10.54	4.79	5.75	--	--	--	--	--	--	--	--	--	--	--	--
08/30/99	10.54	5.25	5.29	--	--	--	--	<50	<0.5	<0.5	<0.5	<0.5	--	--	<2.5
11/17/99	10.54	4.81	5.73	--	--	--	--	--	--	--	--	--	--	--	--
02/21/00	10.54	6.54	4.00	--	--	--	--	<50	<0.5	<0.5	<0.5	<0.5	--	--	<2.5
B-8															
04/23/93	11.99	6.63	5.36	--	--	--	--	<50	<0.5	<0.5	<0.5	<1.5	<50	--	--
07/19/93	11.99	5.77	6.22	--	--	--	--	<50	<0.5	<0.5	<0.5	<1.5	<50	<50	--
10/19/93	11.99	--	--	--	--	--	Dry	--	--	--	--	--	--	--	--
01/07/94	11.99	5.69	6.30	--	--	--	--	<50	<0.5	<0.5	<0.5	<0.5	--	<50	--
08/18/94	11.99	5.56	6.43	--	--	--	--	<50	<0.5	<0.5	<0.5	<0.5	--	<50	--
11/30/94	11.99	6.53	5.46	--	--	--	--	<50	<0.5	<0.5	<0.5	<0.5	--	120*	--
02/15/95	11.99	7.27	4.72	--	--	--	--	<50	<0.5	<0.5	<0.5	<0.5	--	120*	--
05/01/95	11.99	6.99	5.00	--	--	--	--	<50	<0.5	<0.5	<0.5	<0.5	--	51**	--
08/04/95	11.99	6.07	5.92	--	--	--	--	<50	<0.5	<0.5	<0.5	<0.5	--	<50	--
11/30/98	11.99	6.45	5.54	--	--	--	--	--	--	--	--	--	--	--	--

NO LONGER MONITORED OR SAMPLED

* Chromatogram pattern indicates a non-diesel mix.

** Chromatogram pattern indicates an unidentified hydrocarbon.

Cumulative Table of Well Data and Analytical Results

Vertical Measurements are in feet.

Volumetric Measurements are in gallons.

Analytical results are in parts per billion (ppb)

DATE	Well Head Elev.	Ground Water Elev.	Depth To Water	SPH Thickness	SPH Removed	Total SPH Removed	Notes	TPH-Gasoline	Benzene	Toluene	Ethyl-Benzene	Xylene	TOG	TPH-Diesel	MTBE
B-9															
04/23/93	10.70	6.14	4.56	--	--	--	--	<50	<0.5	<0.5	<0.5	<1.5	<50	--	--
07/19/93	10.70	5.25	5.45	--	--	--	--	<50	<0.5	<0.5	<0.5	<1.5	<50	<50	--
10/19/93	10.70	4.81	5.89	--	--	--	--	<50	<0.5	<0.5	<0.5	<0.5	--	<50	--
01/07/94	10.70	5.29	5.41	--	--	--	--	<50	<0.5	<0.5	<0.5	<0.5	--	<50	--
08/18/94	10.70	5.15	5.55	--	--	--	--	<50	<0.5	<0.5	<0.5	<0.5	--	<50	--
11/30/94	10.70	6.35	4.35	--	--	--	--	<50	<0.5	<0.5	<0.5	<0.5	--	60*	--
02/15/95	10.70	7.05	3.65	--	--	--	--	<50	<0.5	<0.5	<0.5	<0.5	--	<50	--
05/01/95	10.70	6.41	4.29	--	--	--	--	<50	<0.5	<0.5	<0.5	<0.5	--	<50	--
08/04/95	10.70	5.50	5.20	--	--	--	--	<50	<0.5	<0.5	<0.5	<0.5	--	<50	--

NO LONGER MONITORED OR SAMPLED

B-10

11/29/95	11.42	4.91	6.51	--	--	--	--	1700	95	<2.5	69	170	--	900*	22
02/08/96	11.42	6.87	4.55	--	--	--	--	230	31	<0.5	7.2	6.2	--	650*	10
05/08/96	11.42	5.87	5.55	--	--	--	--	260	61	0.59	37	23	--	570*	20
08/23/96	11.42	5.23	6.19	--	--	--	--	320	34	<0.5	29	15	--	700*	8.3
12/12/96	11.42	5.59	5.83	--	--	--	--	1600	94	<2.5	110	27	--	990*	<12
02/10/97	11.42	6.84	4.58	--	--	--	--	2100	230	5.6	130	83	--	530*	<12
05/01/97	11.42	5.85	5.57	--	--	--	--	2300	110	<2.5	140	49	--	770*	<12
08/05/97	11.42	5.12	6.30	--	--	--	--	650	33	1.1	70	16	--	620*	3.2
10/28/97	11.42	5.24	6.18	--	--	--	--	740	25	1.6	53	14	--	310*	6.7
02/04/98	11.42	8.53	2.89	--	--	--	--	950	23	4.5	<0.5	1.9	--	250*	<2.5
06/03/98	11.42	6.62	4.80	--	--	--	--	<50	<0.5	<0.5	<0.5	<0.5	--	490*	<2.5
07/29/98	11.42	5.77	5.65	--	--	--	**	290	3.9	<0.5	8.5	1.4	--	390*	<2.5
11/30/98	11.42	5.80	5.62	--	--	--	--	<50	<0.5	<0.5	<0.5	<0.5	--	437	7.11
02/24/99	11.42	7.19	4.23	--	--	--	--	160	35	0.55	0.64	0.64	--	259*	9.2
05/06/99	11.42	6.31	5.11	--	--	--	--	490	7.05	1.02	8.24	2.18	--	190*	<5.0
08/30/99	11.42	5.06	6.36	--	--	--	--	205	1.79	0.808	5.55	2.16	--	330*	3.93
11/17/99	11.42	5.48	5.94	--	--	--	--	108	1.2	<0.5	1.2	<0.5	--	2180*	<2.5
02/21/00	11.42	7.07	4.35	--	--	--	--	587	17.6	2.92	10.1	4.61	--	360*	5.08

* Chromatogram pattern indicates an unidentified hydrocarbon.

** See Table of Additional Analyses.

Cumulative Table of Well Data and Analytical Results

Vertical Measurements are in feet.

Volumetric Measurements are in gallons.

Analytical results are in parts per billion (ppb)

DATE	Well Head Elev.	Ground Water Elev.	Depth To Water	SPH Thickness	SPH Removed	Total SPH Removed	Notes	TPH-Gasoline	Benzene	Toluene	Ethyl-Benzene	Xylene	TOG	TPH-Diesel	MTBE
B-11															
11/29/95	11.98	6.08	5.90	--	--	--	--	2800	38	<10	26	48	--	1400*	21,000
02/08/96	11.98	7.54	4.44	--	--	--	--	<5000	<50	<50	<50	<50	--	1100*	38,000
05/08/96	11.98	6.98	5.00	--	--	--	--	4100	110	<10	31	25	--	1300*	17,000
08/23/96	11.98	6.37	5.61	--	--	--	--	3400	160	12	41	13	--	820*	4000
12/12/96	11.98	6.85	5.13	--	--	--	--	3700	120	12	<5.0	30	--	1300*	2200
02/10/97	11.98	7.91	4.07	--	--	--	--	2300	56	17	<5.0	20	--	810*	4700
05/01/97	11.98	6.95	5.03	--	--	--	--	<5000	<50	<50	<50	<50	--	820*	21,000
08/05/97	11.98	6.38	5.60	--	--	--	--	3500	42	<10	<10	<10	--	900*	4100
10/28/97	11.98	6.30	5.68	--	--	--	--	3000	39	6.2	8.0	13	--	1300*	2300
02/04/98	11.98	9.39	2.59	--	--	--	--	1300	3.2	1.4	<0.5	5.0	--	930*	46,000
06/03/98	11.98	7.53	4.45	--	--	--	--	860	3.7	1.4	0.84	3.0	--	740*	34,000
07/29/98	11.98	6.80	5.18	--	--	--	**	1300	6.9	2.5	3.8	2.0	--	1400*	50,000
07/29/98	11.98	6.80	5.18	--	--	--	Confirmation run	--	--	--	--	--	--	--	41,000
11/30/98	11.98	6.91	5.07	--	--	--	--	<1000	<10	<10	<10	<10	--	1020	5370
02/24/99	11.98	7.79	4.19	--	--	--	--	690	4.7	<0.5	2.7	3.1	--	2290*	67,000
05/06/99	11.98	7.43	4.55	--	--	--	--	423	4.66	0.662	<0.5	1.38	--	580*	20,600
08/30/99	11.98	6.18	5.80	--	--	--	--	1220	31	8.6	<5.0	14	--	1120*	10,900
11/17/99	11.98	6.41	5.57	--	--	--	--	2800	36.6	10.6	8.41	11.6	--	1160*	12,000
02/21/00	11.98	7.77	4.21	--	--	--	--	1570	12.3	2.71	3.33	12.9	--	730*	2980

* Chromatogram pattern indicates an unidentified hydrocarbon.

** See Table of Additional Analyses.

Cumulative Table of Well Data and Analytical Results

Vertical Measurements are in feet.

Volumetric Measurements are in gallons.

Analytical results are in parts per billion (ppb)

DATE	Well Head Elev.	Ground Water Elev.	Depth To Water	SPH Thickness	SPH Removed	Total SPH Removed	Notes	TPH-Gasoline	Benzene	Toluene	Ethyl-Benzene	Xylene	TOG	TPH-Diesel	MTBE
B-12															
11/29/95	11.16	5.15	6.01	--	--	--	--	1100	10	<10	<10	<10	--	1800*	37,000
02/08/96	11.16	6.56	4.60	--	--	--	--	<20,000	<200	<200	<200	<200	--	1800*	88,000
05/08/96	11.16	6.08	5.08	--	--	--	--	<25,000	<250	<250	<250	<250	--	1800*	88,000
08/23/96	11.16	5.51	5.65	--	--	--	--	630	16	<5.0	<5.0	<5.0	--	1500*	420
12/12/96	11.16	6.05	5.11	--	--	--	--	<25,000	<250	<250	<250	<250	--	1200*	54,000
02/10/97	11.16	7.05	4.11	--	--	--	--	<20,000	<200	<200	<200	<200	--	1200*	65,000
02/10/97	11.16	7.05	4.11	--	--	--	EPA 8240	--	<500	<500	<500	<500	--	--	--
05/01/97	11.16	6.17	4.99	--	--	--	--	<12,500	<125	<125	<125	<125	--	1100*	64,000
08/05/97	11.16	5.55	5.61	--	--	--	--	<10,000	<100	<100	<100	<100	--	1100*	46,000
10/28/97	11.16	5.40	5.76	--	--	--	--	1400	39	<5.0	7.2	6.0	--	1100*	29,000
02/04/98	11.16	8.53	2.63	--	--	--	--	920	6.9	1.1	<0.5	2.8	--	4800*	59,000
06/03/98	11.16	6.71	4.45	--	--	--	--	590	9.4	<0.5	0.93	<0.5	--	2000*	15,000
07/29/98	11.16	5.91	5.25	--	--	--	**	820	5.6	2.0	3.3	1.2	--	2200*	28,000
07/29/98	11.16	5.91	5.25	--	--	--	Confirmation run	--	--	--	--	--	--	--	33,000
11/30/98	11.16	6.03	5.13	--	--	--	--	2110	<10	<10	<10	<10	--	1060	5330
02/24/99	11.16	7.16	4.00	--	--	--	--	410	0.64	<0.5	2.2	2.3	--	2680*	15,000
05/06/99	11.16	6.71	4.45	--	--	--	**	<500	<5.0	<5.0	<5.0	<5.0	<1000	3550*	1370
08/30/99	11.16	5.32	5.84	--	--	--	--	985	12.5	6.0	9.5	10.8	--	1310*	6600
11/17/99	11.16	5.73	5.43	--	--	--	--	1700	14.4	5.99	5.98	<5.0	--	1060*	14,200
02/21/00	11.16	6.85	4.31	--	--	--	--	595	3.49	<0.5	<0.5	4.26	--	430*	5100

* Chromatogram pattern indicates an unidentified hydrocarbon.

** See Table of Additional Analyses.

Cumulative Table of Well Data and Analytical Results

Vertical Measurements are in feet.

Volumetric Measurements are in gallons.

Analytical results are in parts per billion (ppb)

DATE	Well Head Elev.	Ground Water Elev.	Depth To Water	SPH Thickness	SPH Removed	Total SPH Removed	Notes	TPH-Gasoline	Benzene	Toluene	Ethyl-Benzene	Xylene	TOG	TPH-Diesel	MTBE
B-13															
11/29/95	11.17	5.26	5.91	--	--	--	--	1800	19	<5.0	5.5	<5.0	--	3400*	7400
02/08/96	11.17	6.72	4.45	--	--	--	--	910	12	1.3	2.0	1.9	--	450*	77
05/08/96	11.17	6.20	4.97	--	--	--	--	140	1.9	<0.5	0.88	2.0	--	560*	98
08/23/96	11.17	5.54	5.63	--	--	--	--	1300	<10	<10	<10	<10	--	1300*	450
12/12/96	11.17	5.91	5.26	--	--	--	--	2600	29	5.4	9.40	6.3	--	1300*	230
02/10/97	11.17	7.05	4.12	--	--	--	--	670	<0.5	6.7	2.6	5.6	--	290*	28
05/01/97	11.17	6.17	5.00	--	--	--	--	920	8.5	4.6	2.1	6.1	--	480*	530
08/05/97	11.17	5.52	5.65	--	--	--	--	1900	23	<5.0	<5.0	<5.0	--	1300*	860
10/28/97	11.17	5.49	5.68	--	--	--	--	2400	33	14	8.4	10	--	2200*	2100
02/04/98	11.17	8.48	2.69	--	--	--	--	110	<0.5	<0.5	<0.5	<0.5	--	260*	260
06/03/98	11.17	6.79	4.38	--	--	--	--	<50	<0.5	<0.5	<0.5	<0.5	--	480*	400
07/29/98	11.17	6.12	5.05	--	--	--	**	350	5.0	<0.5	0.67	1.2	--	830*	730
07/29/98	11.17	6.12	5.05	--	--	--	Confirmation run	--	--	--	--	--	--	--	980
11/30/98	11.17	6.16	5.01	--	--	--	--	168	0.797	<0.5	<0.5	<0.5	--	741	114
02/24/99	11.17	7.14	4.03	--	--	--	--	69	<0.5	<0.5	<0.5	<0.5	--	670*	530
05/06/99	11.17	6.72	4.45	--	--	--	--	<500	<5.0	<5.0	<5.0	<5.0	--	540*	454
08/30/99	11.17	5.43	5.74	--	--	--	--	748	13.7	<2.5	4.53	10.6	--	927*	377
11/17/99	11.17	5.58	5.59	--	--	--	--	1240	24.6	8.96	<5.0	20.2	--	1310*	1900
02/21/00	11.17	6.93	4.24	--	--	--	--	443	2.11	0.908	1.89	2.89	--	200*	254

* Chromatogram pattern indicates an unidentified hydrocarbon.

** See Table of Additional Analyses.

Cumulative Table of Well Data and Analytical Results

Vertical Measurements are in feet.

Volumetric Measurements are in gallons.

Analytical results are in parts per billion (ppb)

DATE	Well Head Elev.	Ground Water Elev.	Depth To Water	SPH Thickness	SPH Removed	Total SPH Removed	Notes	TPH-Gasoline	Benzene	Toluene	Ethyl-Benzene	Xylene	TOG	TPH-Diesel	MTBE
TRIP BLANK															
01/06/93	--	--	--	--	--	--	--	<50	<0.5	<0.5	<0.5	<0.5	--	--	--
04/23/93	--	--	--	--	--	--	--	--	--	--	--	--	--	--	--
07/19/93	--	--	--	--	--	--	--	--	--	--	--	--	--	--	--
10/19/93	--	--	--	--	--	--	--	--	--	--	--	--	--	--	--
01/17/94	--	--	--	--	--	--	--	<50	<0.5	0.5	<0.5	<0.5	--	--	--
08/18/94	--	--	--	--	--	--	--	<50	<0.5	<0.5	<0.5	<0.5	--	--	--
11/30/94	--	--	--	--	--	--	--	<50	<0.5	<0.5	<0.5	<0.5	--	--	--
02/15/95	--	--	--	--	--	--	--	<50	<0.5	<0.5	<0.5	<0.5	--	--	--
05/01/95	--	--	--	--	--	--	--	<50	<0.5	<0.5	<0.5	<0.5	--	--	--
08/04/95	--	--	--	--	--	--	--	<50	<0.5	<0.5	<0.5	<0.5	--	--	--
11/29/95	--	--	--	--	--	--	--	<50	<0.5	<0.5	<0.5	<0.5	--	--	--
02/08/96	--	--	--	--	--	--	--	<50	<0.5	<0.5	<0.5	<0.5	--	--	<2.5
05/08/96	--	--	--	--	--	--	--	<50	<0.5	<0.5	<0.5	<0.5	--	--	--
08/23/96	--	--	--	--	--	--	--	<50	<0.5	<0.5	<0.5	<0.5	--	--	<2.5
12/12/96	--	--	--	--	--	--	--	<50	<0.5	<0.5	<0.5	<0.5	--	--	--
02/10/97	--	--	--	--	--	--	--	<50	<0.5	<0.5	<0.5	<0.5	--	--	<2.5
05/01/97	--	--	--	--	--	--	--	<50	<0.5	<0.5	<0.5	<0.5	--	--	<2.5
08/05/97	--	--	--	--	--	--	--	<50	<0.5	<0.5	<0.5	<0.5	--	--	<2.5
10/28/97	--	--	--	--	--	--	--	<50	<0.5	<0.5	<0.5	<0.5	--	--	<2.5
02/04/98	--	--	--	--	--	--	--	<50	<0.5	<0.5	<0.5	<0.5	--	--	<2.5
02/12/98	--	--	--	--	--	--	--	<50	<0.5	<0.5	<0.5	<0.5	--	--	<2.5
06/03/98	--	--	--	--	--	--	--	<50	<0.5	<0.5	<0.5	<0.5	--	--	<2.5
07/29/98	--	--	--	--	--	--	--	<50	<0.5	<0.5	<0.5	<0.5	--	--	<2.5
11/30/98	--	--	--	--	--	--	--	<50	<0.5	<0.5	<0.5	<0.5	--	--	<2.0
02/24/99	--	--	--	--	--	--	--	<50	<0.5	<0.5	<0.5	<0.5	--	--	<2.5
05/06/99	--	--	--	--	--	--	--	<50	<0.5	<0.5	<0.5	<0.5	--	--	<5.0
08/30/99	--	--	--	--	--	--	--	<50	<0.5	<0.5	<0.5	<0.5	--	--	<2.5
11/17/99	--	--	--	--	--	--	--	<50	<0.5	<0.5	<0.5	<0.5	--	--	<2.5
02/21/00	--	--	--	--	--	--	--	<50	<0.5	<0.5	<0.5	<0.5	--	--	<2.5

Cumulative Table of Well Data and Analytical Results

ADDITIONAL ANALYSES

Analytical values are in parts per billion (ppb)

DATE	Notes	Alkalinity	Ferrous Iron	Nitrate as Nitrate	Sulfate	EPA 8010B	EPA 8270B	Cadmium	Chromium	Lead	Nickel	Zinc	Motor Oil
A-1													
08/30/99	--	--	--	--	--	--	--	--	--	--	--	--	68,400
B-1													
07/29/98	--	930,000	2000	13,000	280,000	--	--	--	--	--	--	--	--
B-5													
07/29/98	--	280,000	1100	<1000	7000	--	--	--	--	--	--	--	--
B-10													
07/29/98	--	630,000	740	34,000	16,000	--	--	--	--	--	--	--	--
B-11													
07/29/98	--	460,000	1100	33,000	18,000	--	--	--	--	--	--	--	--
B-12													
07/29/98	--	700,000	450	<1000	27,000	--	--	--	--	--	--	--	--
05/06/99	--	--	--	--	--	<5.0-<10	<10-<50	<10	86.7	<75	143	185	--
B-13													
07/29/98	--	290,000	240	5600	17,000	--	--	--	--	--	--	--	--

Note: Blaine Tech Services, Inc. began routine monitoring of the groundwater wells at this site on November 1, 1994.
 Earlier field data and analytical results are drawn from the September 27, 1994 Groundwater Technology, Inc. report.

ABBREVIATIONS:

TPH = Total Petroleum Hydrocarbons
 SPH = Separate-Phase Hydrocarbons
 TOG = Total Oil and Grease
 MTBE = Methyl t-Butyl Ether

Analytical Appendix



March 7, 2000

Scott Boor
Blaine Tech Services (Chev)
1680 Rogers Avenue
San Jose, CA 95112

RE: Chevron 9-0290

Dear Scott Boor

Enclosed are the results of analyses for sample(s) received by the laboratory on February 22, 2000. Chromatograms for unidentified hydrocarbons are included in this report. If you have any questions concerning this report, please feel free to contact me.

Sincerely,

Wendy Bonnes
Project Manager

CA ELAP Certificate Number 1210





Blaine Tech Services (Chev) 1680 Rogers Avenue San Jose, CA 95112	Project: Chevron 9-0290 (1802 Webster St., Alameda) Project Number: - Project Manager: Scott Boor	Sampled: 2/21/00 Received: 2/22/00 Reported: 3/7/00 10:42
---	---	---

ANALYTICAL REPORT FOR SAMPLES:

Sample Description	Laboratory Sample Number	Sample Matrix	Date Sampled
B-1	MJB0828-01	Water	2/21/00
B-5	MJB0828-02	Water	2/21/00
B-6	MJB0828-03	Water	2/21/00
B-7	MJB0828-04	Water	2/21/00
B-10	MJB0828-05	Water	2/21/00
B-11	MJB0828-06	Water	2/21/00
B-12	MJB0828-07	Water	2/21/00
B-13	MJB0828-08	Water	2/21/00
TB	MJB0828-09	Water	2/21/00





Blaine Tech Services (Chev) 1680 Rogers Avenue San Jose, CA 95112	Project: Chevron 9-0290 (1802 Webster St., Alameda) Project Number: - Project Manager: Scott Boor	Sampled: 2/21/00 Received: 2/22/00 Reported: 3/7/00 10:42
---	---	---

**Total Purgeable Hydrocarbons (C6-C12), BTEX and MTBE by DHS LUFT
Sequoia Analytical - Morgan Hill**

Analyte	Batch Number	Date Prepared	Date Analyzed	Specific Method	Reporting Limit	Result	Units	Notes*
				<u>MJB0828-01</u>			<u>Water</u>	
B-1								
Purgeable Hydrocarbons	0C01002	3/1/00	3/1/00	DHS LUFT	100	679	ug/l	P-02
Benzene	"	"	"	DHS LUFT	1.00	10.5	"	
Toluene	"	"	"	DHS LUFT	1.00	ND	"	
Ethylbenzene	"	"	"	DHS LUFT	1.00	3.84	"	
Xylenes (total)	"	"	"	DHS LUFT	1.00	3.21	"	
Methyl tert-butyl ether	"	"	"	DHS LUFT	50.0	2330	"	M-03
Surrogate: a,a,a-Trifluorotoluene	"	"	"	70-130		87.4	%	
				<u>MJB0828-02</u>			<u>Water</u>	
B-5								
Purgeable Hydrocarbons	0C01002	3/1/00	3/1/00	DHS LUFT	100	ND	ug/l	
Benzene	"	"	"	DHS LUFT	1.00	ND	"	
Toluene	"	"	"	DHS LUFT	1.00	ND	"	
Ethylbenzene	"	"	"	DHS LUFT	1.00	ND	"	
Xylenes (total)	"	"	"	DHS LUFT	1.00	ND	"	
Methyl tert-butyl ether	"	"	"	DHS LUFT	5.00	555	"	
Surrogate: a,a,a-Trifluorotoluene	"	"	"	70-130		101	%	
				<u>MJB0828-04</u>			<u>Water</u>	
B-7								
Purgeable Hydrocarbons	0C01001	3/1/00	3/1/00	DHS LUFT	50.0	ND	ug/l	
Benzene	"	"	"	DHS LUFT	0.500	ND	"	
Toluene	"	"	"	DHS LUFT	0.500	ND	"	
Ethylbenzene	"	"	"	DHS LUFT	0.500	ND	"	
Xylenes (total)	"	"	"	DHS LUFT	0.500	ND	"	
Methyl tert-butyl ether	"	"	"	DHS LUFT	2.50	ND	"	
Surrogate: a,a,a-Trifluorotoluene	"	"	"	70-130		100	%	
				<u>MJB0828-05</u>			<u>Water</u>	
B-10								
Purgeable Hydrocarbons	0C01002	3/1/00	3/1/00	DHS LUFT	50.0	587	ug/l	P-04
Benzene	"	"	"	DHS LUFT	0.500	17.6	"	
Toluene	"	"	"	DHS LUFT	0.500	2.92	"	
Ethylbenzene	"	"	"	DHS LUFT	0.500	10.1	"	
Xylenes (total)	"	"	"	DHS LUFT	0.500	4.61	"	
Methyl tert-butyl ether	"	"	"	DHS LUFT	2.50	5.08	"	
Surrogate: a,a,a-Trifluorotoluene	"	"	"	70-130		83.3	%	
				<u>MJB0828-06</u>			<u>Water</u>	
B-11								
Purgeable Hydrocarbons	0C02004	3/2/00	3/2/00	DHS LUFT	250	1570	ug/l	P-04
Benzene	"	"	"	DHS LUFT	2.50	12.3	"	





Blaine Tech Services (Chev) 1680 Rogers Avenue San Jose, CA 95112	Project: Chevron 9-0290 (1802 Webster St., Alameda) Project Number: - Project Manager: Scott Boor	Sampled: 2/21/00 Received: 2/22/00 Reported: 3/7/00 10:42
---	---	---

**Total Purgeable Hydrocarbons (C6-C12), BTEX and MTBE by DHS LUFT
Sequoia Analytical - Morgan Hill**

Analyte	Batch Number	Date Prepared	Date Analyzed	Specific Method	Reporting Limit	Result	Units	Notes*
B-11 (continued)		MJB0828-06			Water			
Toluene	0C02004	3/2/00	3/2/00	DHS LUFT	2.50	2.71	ug/l	
Ethylbenzene	"	"	"	DHS LUFT	2.50	3.33	"	
Xylenes (total)	"	"	"	DHS LUFT	2.50	12.9	"	
Methyl tert-butyl ether	"	"	3/1/00	DHS LUFT	50.0	2980	"	M-03
Surrogate: a,a,a-Trifluorotoluene	"	"	3/2/00	70-130		86.0	%	
B-12		MJB0828-07			Water			
Purgeable Hydrocarbons	0C02004	3/2/00	3/2/00	DHS LUFT	250	595	ug/l	P-04
Benzene	"	"	"	DHS LUFT	2.50	3.49	"	
Toluene	"	"	"	DHS LUFT	2.50	ND	"	
Ethylbenzene	"	"	"	DHS LUFT	2.50	ND	"	
Xylenes (total)	"	"	"	DHS LUFT	2.50	4.26	"	
Methyl tert-butyl ether	"	"	3/1/00	DHS LUFT	50.0	5100	"	M-03
Surrogate: a,a,a-Trifluorotoluene	"	"	3/2/00	70-130		100	%	
B-13		MJB0828-08			Water			
Purgeable Hydrocarbons	0C02004	3/2/00	3/2/00	DHS LUFT	50.0	443	ug/l	P-04
Benzene	"	"	"	DHS LUFT	0.500	2.11	"	
Toluene	"	"	"	DHS LUFT	0.500	0.908	"	
Ethylbenzene	"	"	"	DHS LUFT	0.500	1.89	"	
Xylenes (total)	"	"	"	DHS LUFT	0.500	2.89	"	
Methyl tert-butyl ether	"	"	"	DHS LUFT	2.50	254	"	
Surrogate: a,a,a-Trifluorotoluene	"	"	"	70-130		87.4	%	
TB		MJB0828-09			Water			
Purgeable Hydrocarbons	0C01001	3/1/00	3/1/00	DHS LUFT	50.0	ND	ug/l	
Benzene	"	"	"	DHS LUFT	0.500	ND	"	
Toluene	"	"	"	DHS LUFT	0.500	ND	"	
Ethylbenzene	"	"	"	DHS LUFT	0.500	ND	"	
Xylenes (total)	"	"	"	DHS LUFT	0.500	ND	"	
Methyl tert-butyl ether	"	"	"	DHS LUFT	2.50	ND	"	
Surrogate: a,a,a-Trifluorotoluene	"	"	"	70-130		102	%	





Blaine Tech Services (Chev)	Project: Chevron 9-0290 (1802 Webster St., Alameda)	Sampled: 2/21/00
1680 Rogers Avenue	Project Number: -	Received: 2/22/00
San Jose, CA 95112	Project Manager: Scott Boor	Reported: 3/7/00 10:42

**MTBE by DHS LUFT
Sequoia Analytical - Morgan Hill**

Analyte	Batch Number	Date Prepared	Date Analyzed	Specific Method	Reporting Limit	Result	Units	Notes*
B-6				MJB0828-03			Water	
Methyl tert-butyl ether	0C01002	3/1/00	3/1/00	DHS LUFT	50.0	6920	ug/l	
<i>Surrogate: a,a,a-Trifluorotoluene</i>	"	"	"	70-130		95.5	%	





Blaine Tech Services (Chev) 1680 Rogers Avenue San Jose, CA 95112	Project: Chevron 9-0290 (1802 Webster St., Alameda) Project Number: - Project Manager: Scott Boor	Sampled: 2/21/00 Received: 2/22/00 Reported: 3/7/00 10:42
---	---	---

**Diesel Hydrocarbons (C9-C24) by DHS LUFT
Sequoia Analytical - Walnut Creek**

Analyte	Batch Number	Date Prepared	Date Analyzed	Specific Method	Reporting Limit	Result	Units	Notes*
<u>B-1</u>				<u>MJB0828-01</u>			<u>Water</u>	
Diesel Range Hydrocarbons	0B29006	2/29/00	3/3/00	EPA 8015M	50	1000	ug/l	D-14
<i>Surrogate: n-Pentacosane</i>	"	"	"	50-150		73.0	%	
<u>B-5</u>				<u>MJB0828-02</u>			<u>Water</u>	
Diesel Range Hydrocarbons	0B29006	2/29/00	3/3/00	EPA 8015M	50	240	ug/l	D-06,D-12
<i>Surrogate: n-Pentacosane</i>	"	"	"	50-150		77.2	%	
<u>B-6</u>				<u>MJB0828-03</u>			<u>Water</u>	
Diesel Range Hydrocarbons	0B29006	2/29/00	3/1/00	EPA 8015M	50	180	ug/l	D-14
<i>Surrogate: n-Pentacosane</i>	"	"	"	50-150		64.0	%	
<u>B-10</u>				<u>MJB0828-05</u>			<u>Water</u>	
Diesel Range Hydrocarbons	0B29006	2/29/00	3/1/00	EPA 8015M	50	360	ug/l	D-11
<i>Surrogate: n-Pentacosane</i>	"	"	"	50-150		62.2	%	
<u>B-11</u>				<u>MJB0828-06</u>			<u>Water</u>	
Diesel Range Hydrocarbons	0B29006	2/29/00	3/3/00	EPA 8015M	50	730	ug/l	D-11
<i>Surrogate: n-Pentacosane</i>	"	"	"	50-150		55.0	%	
<u>B-12</u>				<u>MJB0828-07</u>			<u>Water</u>	
Diesel Range Hydrocarbons	0B29006	2/29/00	3/3/00	EPA 8015M	50	430	ug/l	D-14
<i>Surrogate: n-Pentacosane</i>	"	"	"	50-150		87.1	%	
<u>B-13</u>				<u>MJB0828-08</u>			<u>Water</u>	
Diesel Range Hydrocarbons	0B29006	2/29/00	3/3/00	EPA 8015M	50	200	ug/l	D-11
<i>Surrogate: n-Pentacosane</i>	"	"	"	50-150		61.0	%	





Blaine Tech Services (Chev) 1680 Rogers Avenue San Jose, CA 95112	Project: Chevron 9-0290 (1802 Webster St., Alameda) Project Number: - Project Manager: Scott Boor	Sampled: 2/21/00 Received: 2/22/00 Reported: 3/7/00 10:42
---	---	---

**Total Purgeable Hydrocarbons (C6-C12), BTEX and MTBE by DHS LUFT/Quality Control
Sequoia Analytical - Morgan Hill**

Analyte	Date Analyzed	Spike Level	Sample Result	QC Result	Units	Reporting Limit Recov. Limits	Recov. %	RPD Limit	RPD %	Notes*
Batch: 0C01001		Date Prepared: 3/1/00		Extraction Method: EPA 5030B [P/T]						
Blank		0C01001-BLK1								
Purgeable Hydrocarbons	3/1/00			ND	ug/l	50.0				
Benzene	"			ND	"	0.500				
Toluene	"			ND	"	0.500				
Ethylbenzene	"			ND	"	0.500				
Xylenes (total)	"			ND	"	0.500				
Methyl tert-butyl ether	"			ND	"	2.50				
<i>Surrogate: a,a,a-Trifluorotoluene</i>	"	10.0		10.0	"	70-130	100			
LCS		0C01001-BS1								
Purgeable Hydrocarbons	3/1/00	250		246	ug/l	70-130	98.4			
<i>Surrogate: a,a,a-Trifluorotoluene</i>	"	10.0		13.5	"	70-130	135			S-02
Matrix Spike		0C01001-MS1 MJB0828-04								
Purgeable Hydrocarbons	3/1/00	250	ND	188	ug/l	60-140	75.2			
<i>Surrogate: a,a,a-Trifluorotoluene</i>	"	10.0		10.1	"	70-130	101			
Matrix Spike Dup		0C01001-MSD1 MJB0828-04								
Purgeable Hydrocarbons	3/1/00	250	ND	191	ug/l	60-140	76.4	25	1.58	
<i>Surrogate: a,a,a-Trifluorotoluene</i>	"	10.0		10.5	"	70-130	105			
Batch: 0C01002		Date Prepared: 3/1/00		Extraction Method: EPA 5030B [P/T]						
Blank		0C01002-BLK1								
Purgeable Hydrocarbons	3/1/00			ND	ug/l	50.0				
Benzene	"			ND	"	0.500				
Toluene	"			ND	"	0.500				
Ethylbenzene	"			ND	"	0.500				
Xylenes (total)	"			ND	"	0.500				
Methyl tert-butyl ether	"			ND	"	2.50				
<i>Surrogate: a,a,a-Trifluorotoluene</i>	"	10.0		9.59	"	70-130	95.9			
LCS		0C01002-BS1								
Purgeable Hydrocarbons	3/1/00	250		295	ug/l	70-130	118			
<i>Surrogate: a,a,a-Trifluorotoluene</i>	"	10.0		8.64	"	70-130	86.4			
Matrix Spike		0C01002-MS1 MJB0819-01								
Purgeable Hydrocarbons	3/1/00	250	ND	176	ug/l	60-140	70.4			
<i>Surrogate: a,a,a-Trifluorotoluene</i>	"	10.0		9.50	"	70-130	95.0			





Blaine Tech Services (Chev) 1680 Rogers Avenue San Jose, CA 95112	Project: Chevron 9-0290 (1802 Webster St., Alameda) Project Number: - Project Manager: Scott Boor	Sampled: 2/21/00 Received: 2/22/00 Reported: 3/7/00 10:42
---	---	---

Total Purgeable Hydrocarbons (C6-C12), BTEX and MTBE by DHS LUFT/Quality Control
Sequoia Analytical - Morgan Hill

Analyte	Date Analyzed	Spike Level	Sample Result	QC Result	Units	Reporting Limit Recov. Limits	Recov. %	RPD Limit	RPD %	Notes*
Matrix Spike Dup		0C01002-MSD1 MJB0819-01								
Purgeable Hydrocarbons	3/1/00	250	ND	252	ug/l	60-140	101	25	35.5	S-03
Surrogate: a,a,a-Trifluorotoluene	"	10.0		8.32	"	70-130	83.2			
Batch: 0C02004		Date Prepared: 3/2/00				Extraction Method: EPA 5030B [P/T]				
Blank		0C02004-BLK1								
Purgeable Hydrocarbons	3/2/00			ND	ug/l	50.0				
Benzene	"			ND	"	0.500				
Toluene	"			ND	"	0.500				
Ethylbenzene	"			ND	"	0.500				
Xylenes (total)	"			ND	"	0.500				
Methyl tert-butyl ether	"			ND	"	2.50				
Surrogate: a,a,a-Trifluorotoluene	"	10.0		9.73	"	70-130	97.3			
LCS		0C02004-BS1								
Benzene	3/2/00	10.0		10.8	ug/l	70-130	108			
Toluene	"	10.0		9.81	"	70-130	98.1			
Ethylbenzene	"	10.0		8.82	"	70-130	88.2			
Xylenes (total)	"	30.0		26.8	"	70-130	89.3			
Surrogate: a,a,a-Trifluorotoluene	"	10.0		10.4	"	70-130	104			
Matrix Spike		0C02004-MS1 MJB0861-07								
Benzene	3/2/00	10.0	ND	9.84	ug/l	60-140	98.4			
Toluene	"	10.0	ND	8.40	"	60-140	84.0			
Ethylbenzene	"	10.0	ND	7.29	"	60-140	72.9			
Xylenes (total)	"	30.0	ND	24.1	"	60-140	80.3			
Surrogate: a,a,a-Trifluorotoluene	"	10.0		9.29	"	70-130	92.9			
Matrix Spike Dup		0C02004-MSD1 MJB0861-07								
Benzene	3/2/00	10.0	ND	10.5	ug/l	60-140	105	25	6.49	
Toluene	"	10.0	ND	9.23	"	60-140	92.3	25	9.42	
Ethylbenzene	"	10.0	ND	8.29	"	60-140	82.9	25	12.8	
Xylenes (total)	"	30.0	ND	25.5	"	60-140	85.0	25	5.65	
Surrogate: a,a,a-Trifluorotoluene	"	10.0		10.1	"	70-130	101			





Blaine Tech Services (Chev) 1680 Rogers Avenue San Jose, CA 95112	Project: Chevron 9-0290 (1802 Webster St., Alameda) Project Number: - Project Manager: Scott Boor	Sampled: 2/21/00 Received: 2/22/00 Reported: 3/7/00 10:42
---	---	---

**MTBE by DHS/LUFT/Quality Control
Sequoia Analytical - Morgan Hill**

Analyte	Date Analyzed	Spike Level	Sample Result	QC Result	Units	Reporting Limit Recov. Limits	Recov. %	RPD Limit	RPD %	Notes*
Batch: 0C01002			Date Prepared: 3/1/00			Extraction Method: EPA 5030B [P/T]				
Blank			0C01002-BLK1							
Methyl tert-butyl ether	3/1/00			ND	ug/l	2.50				
Surrogate: a,a,a-Trifluorotoluene	"	10.0		9.59	"	70-130	95.9			
LCS			0C01002-BS1							
Surrogate: a,a,a-Trifluorotoluene	3/1/00	10.0		8.64	ug/l	70-130	86.4			
Matrix Spike			0C01002-MS1 MJB0819-01							
Surrogate: a,a,a-Trifluorotoluene	3/1/00	10.0		9.50	ug/l	70-130	95.0			
Matrix Spike Dup			0C01002-MSD1 MJB0819-01							
Surrogate: a,a,a-Trifluorotoluene	3/1/00	10.0		8.32	ug/l	70-130	83.2			





Blaine Tech Services (Chev) 1680 Rogers Avenue San Jose, CA 95112	Project: Chevron 9-0290 (1802 Webster St., Alameda) Project Number: - Project Manager: Scott Boor	Sampled: 2/21/00 Received: 2/22/00 Reported: 3/7/00 10:42
---	---	---

**Diesel Hydrocarbons (C9-C24) by DHS LUFT/Quality Control
Sequoia Analytical - Walnut Creek**

Analyte	Date Analyzed	Spike Level	Sample Result	QC Result	Units	Reporting Limit Recov. Limits	Recov. %	RPD Limit	RPD %	Notes*
Batch: 0B29006			Date Prepared: 2/29/00			Extraction Method: EPA 3510B				
Blank			0B29006-BLK1							
Diesel Range Hydrocarbons	3/3/00			ND	ug/l	50				
Surrogate: n-Pentacosane	"	33.3		23.7	"	50-150	71.2			
LCS			0B29006-BS1							
Diesel Range Hydrocarbons	3/3/00	500		385	ug/l	60-140	77.0			
Surrogate: n-Pentacosane	"	33.3		23.3	"	50-150	70.0			
LCS Dup			0B29006-BSD1							
Diesel Range Hydrocarbons	3/3/00	500		390	ug/l	60-140	78.0	50	129	
Surrogate: n-Pentacosane	"	33.3		23.7	"	50-150	71.2			



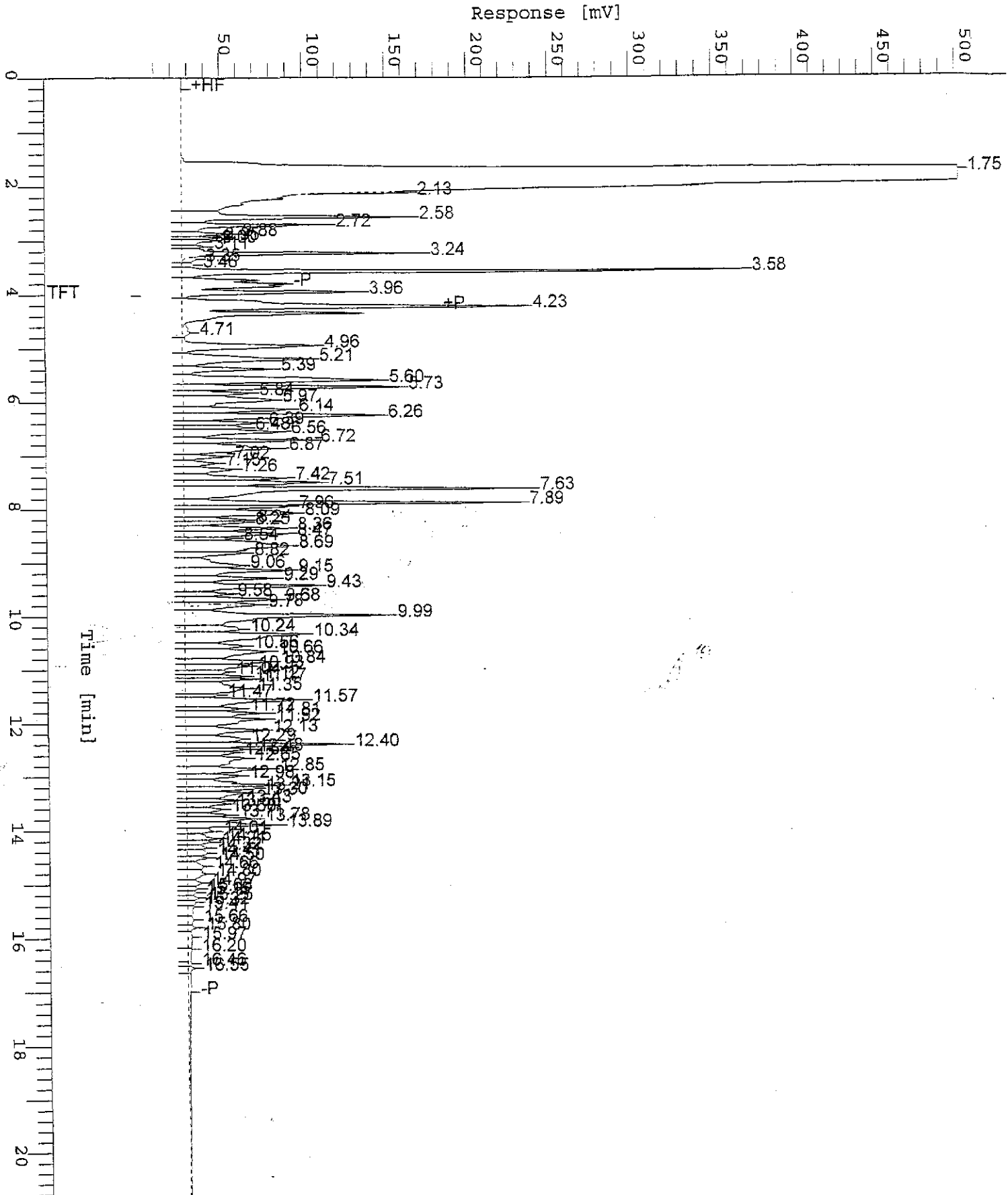
Chromatogram

Sample Name : MJB0828-05RE
FileName : S:\GHP_30\0305\301A025.raw
Method : TPH
Start Time : 0.00 min
Scale Factor : -1.0

End Time : 20.82 min
Plot Offset : 2 mV

Sample #: B-10
Date : 3/2/00 07:18
Time of Injection: 3/1/00 17:21
Low Point : 1.84 mV
Plot Scale: 500.0 mV

Page 1 of 1

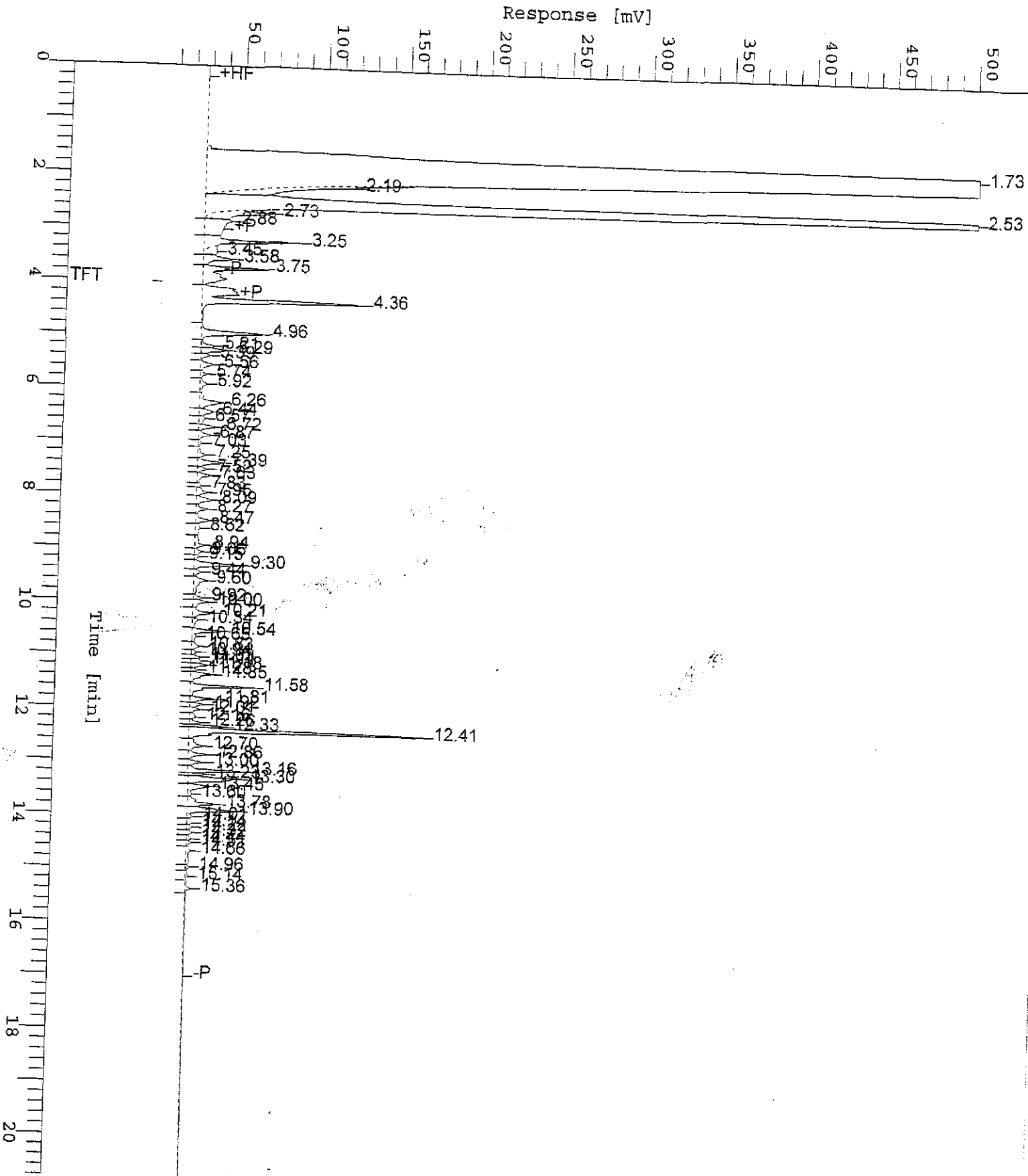


Chromatogram

Sample Name : MJB0828-07CF/RE
FileName : S:\GHP_30\0305\302A022.raw
Method : TPH
Start Time : 0.00 min
Scale Factor : -1.0

End Time : 20.82 min
Plot Offset : 2 mV

Sample #: B-12
Date : 3/3/00 07:04
Page 1 of 1
Time of Injection: 3/2/00 16:13
Low Point : 2.00 mV
High Point : 502.00 mV
Plot Scale : 500.0 mV



Chromatogram

Sample Name : MJB0828-08CF/RE

FileName : S:\GHP_30\0305\302A023.raw

Method : TPH

Start Time : 0.00 min

Scale Factor: -1.0

Sample #: B-13

Date : 3/3/00 07:04

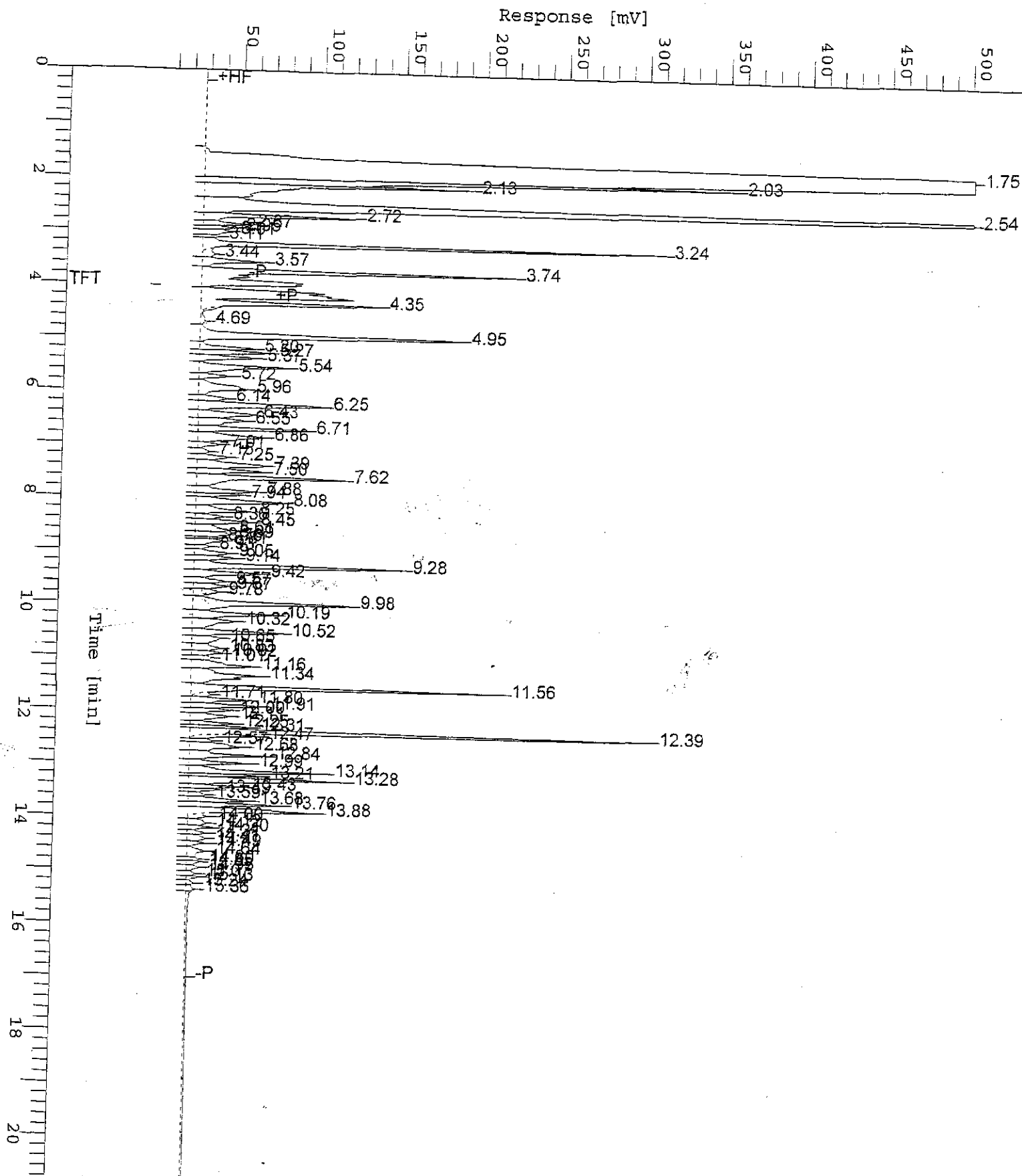
Time of Injection: 3/2/00 16:38

Low Point : 1.89 mV

Plot Scale: 500.0 mV

Page 1 of 1

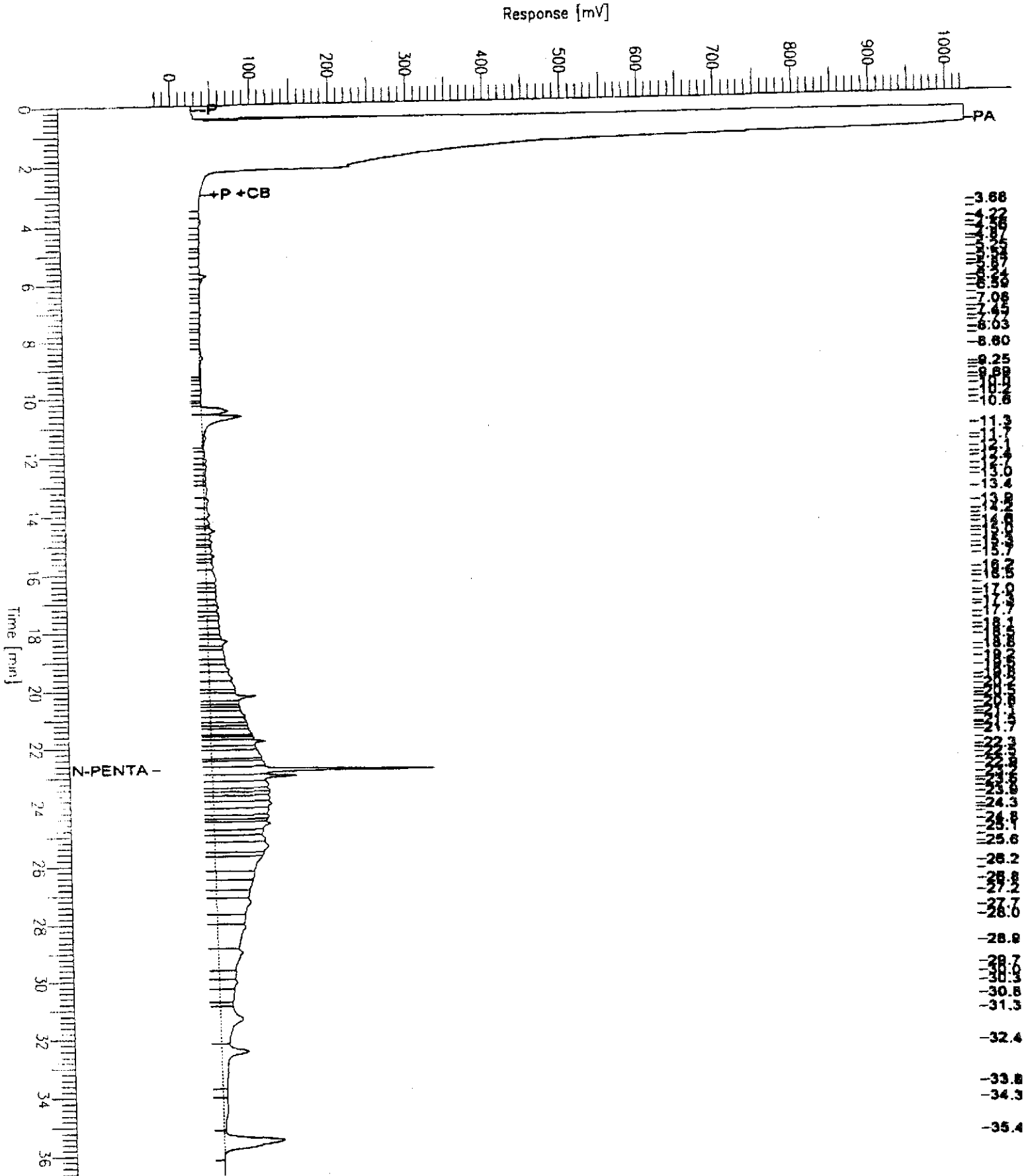
High Point : 501.89 mV



Sample Name : W002647-02
FileName : C:\HP3DATA\JAMA061.RAW
Method :
Start Time : 0.00 min
Scale Factor : 0.0

End Time : 36.65 min
Plot Offset: -26 mV

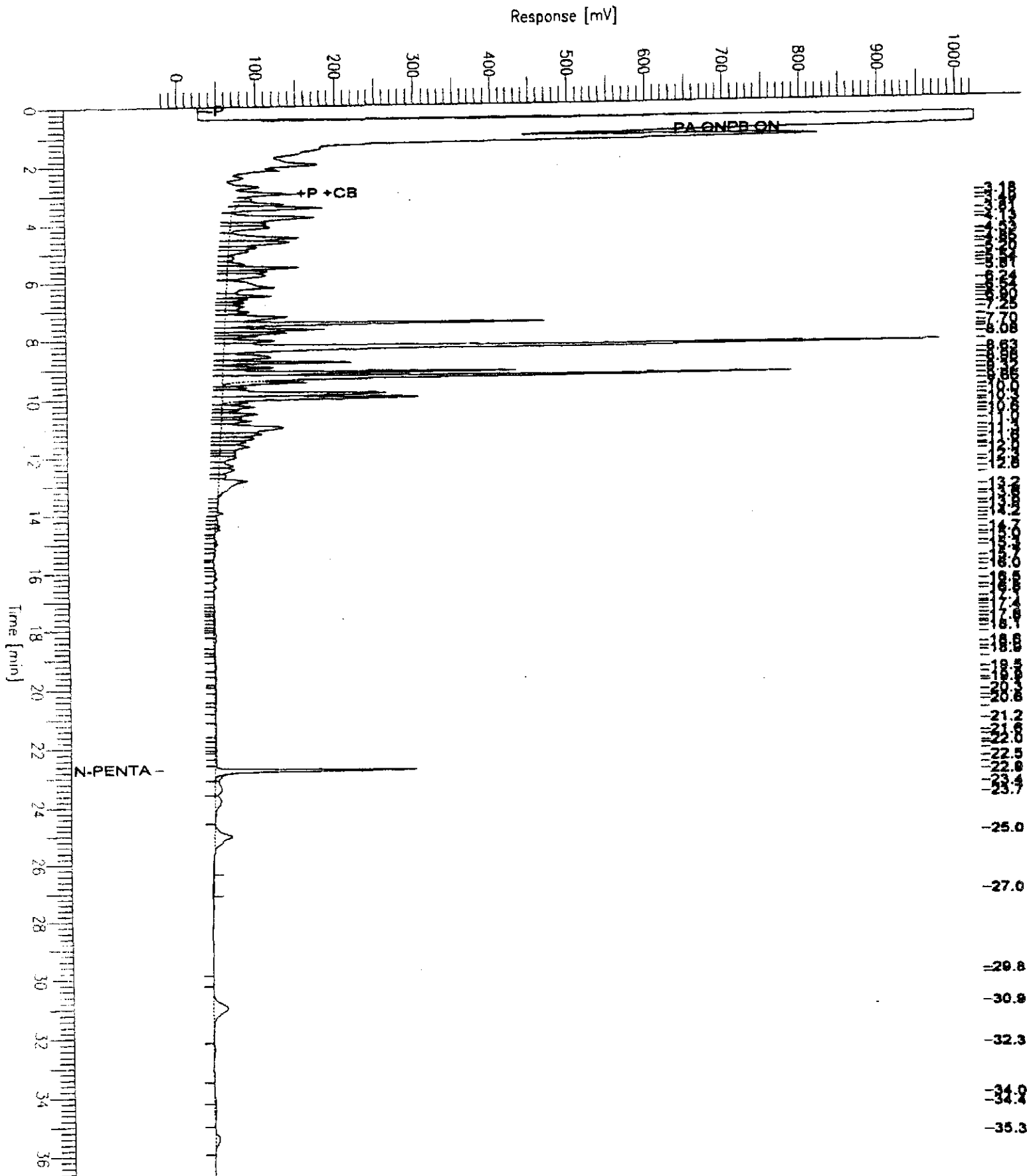
Sample #: Sample
Date : 3/13/00 02:42 PM
Time of Injection: 3/3/00 09:43 AM
Low Point : -26.20 mV
Plot Scale: 1050.2 mV
High Point : 1024.00 mV



Sample Name : W002647-05
FileName : C:\HP3DATA\3AFB591.RAW
Method :
Start Time : 0.00 min
Scale Factor: 0.0

End Time : 36.65 min
Plot Offset: -26 mV

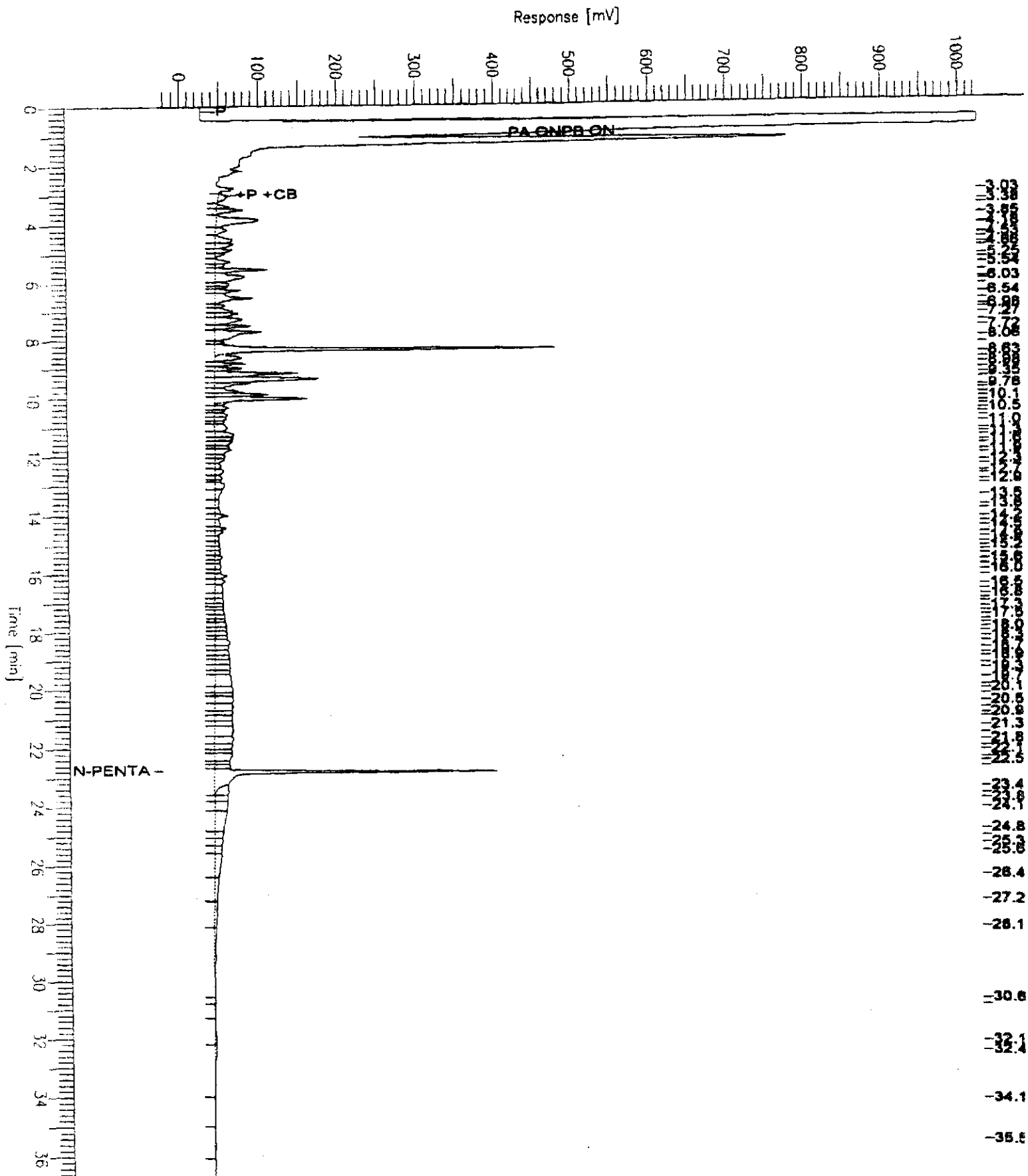
Sample #: Sample
Date : 3/13/00 02:41 PM
Time of Injection: 3/1/00 07:02 AM
Low Point : -26.16 mV
Plot Scale: 1050.2 mV
High Point : 1024.00 mV



Sample Name : W002647-06
 FileName : C:\HP3DATA\3AMA065.RAW
 Method :
 Start Time : 0.00 min
 Scale Factor: 0.0

End Time : 36.65 min
 Plot Offset: -26 mV

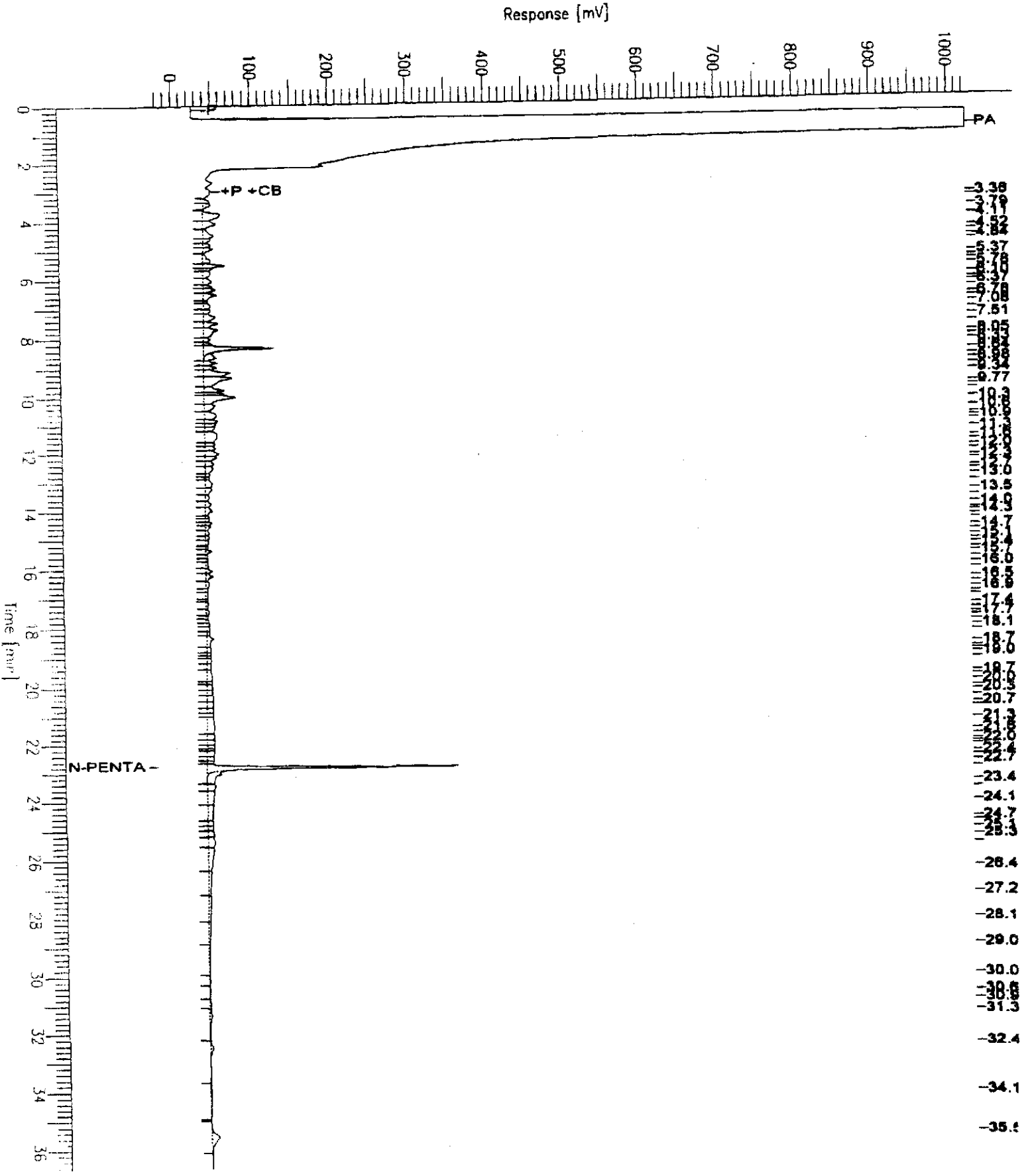
Sample #: Sample
 Date : 3/13/00 02:43 PM
 Time of Injection: 3/3/00 12:40 PM
 Low Point : -25.75 mV
 Plot Scale: 1049.7 mV
 High Point : 1024.00 mV



Sample Name : W002647-07
FileName : C:\HP3DATA\3AMA066.RAW
Method :
Start Time : 0.00 min
Scale Factor : 0.0

End Time : 36.65 min
Plot Offset: -26 mV

Sample #: Sample
Date : 3/13/00 02:43 PM
Time of Injection: 3/3/00 01:24 PM
Low Point : -26.20 mV
Plot Scale: 1050.2 mV
High Point : 1024.00 mV





Blaine Tech Services (Chev) 1680 Rogers Avenue San Jose, CA 95112	Project: Chevron 9-0290 (1802 Webster St., Alameda) Project Number: - Project Manager: Scott Boor	Sampled: 2/21/00 Received: 2/22/00 Reported: 3/7/00 10:42
---	---	---

Notes and Definitions

#	Note
---	------

- D-06 Discrete peaks.
- D-11 Chromatogram Pattern: Unidentified Hydrocarbons < C16
- D-12 Chromatogram Pattern: Unidentified Hydrocarbons > C16
- D-14 Chromatogram Pattern: Unidentified Hydrocarbons C9-C24
- M-03 Sample was analyzed at a second dilution per clients request.
- P-02 Chromatogram Pattern: Weathered Gasoline C6-C12
- P-04 Chromatogram Pattern: Weathered Gasoline C6-C12 + Unidentified Hydrocarbons C6-C12
- S-02 The surrogate recovery for this sample cannot be accurately quantified due to interference from coeluting organic compounds present in the sample.
- S-03 The surrogate recovery for this sample is outside of established control limits. Review of associated QC indicates the recovery for this surrogate does not represent an out-of-control condition.
- DET Analyte DETECTED
- ND Analyte NOT DETECTED at or above the reporting limit
- NR Not Reported
- dry Sample results reported on a dry weight basis
- Recov. Recovery
- RPD Relative Percent Difference



Fax copy of Lab Report and COC to Chevron Contact:

Yes
 No

Chain-of-Custody-Record

Chevron Products Co. P.O. BOX 6004 San Ramon, CA 94583 FAX (925)842-8370	Chevron Facility Number <u>9-0290</u>	Chevron Contact Name) <u>Brett Hunter</u>
	Facility Address <u>1802 Webster St., Alameda</u>	(Phone) <u>(925) 842-8695</u>
	Consultant Project Number _____	Laboratory Name <u>Sequoia</u>
	Consultant Name <u>Blaine Tech Services, Inc.</u>	Laboratory Service Order <u>9144488</u>
	Address <u>1680 Rogers Ave., San Jose</u>	Laboratory Service Code <u>ZZ02790</u>
Project Contact (Name) <u>Scott Boor</u>	Samples collected by (Name) <u>Garrett H</u>	
(Phone) <u>408-573-0555</u> (Fax) <u>408-573-7771</u>	Signature <u>[Signature]</u>	

State Method: CA OR WA NW Series CO UT

Sample Number	Number of Containers	Matrix S = Soil W = Water C = Charcoal	A = Air C = Charcoal	Sample Preservation	Date/Time	BTEX/MTBE + TPH GAS (8020 + 8015)	BTEX + TPH GAS (8020 + 8015)	TPH Diesel (8015)	Oxygenates (8260)	Purgeable Halocarbons (8010)	Purgeable Organics (8270)	Extractable Organics (8270)	Oil and Grease (5520)	Metals (ICAP or AA) Cd, Cr, Pb, Zn, Ni	BTEX (8020)	BTEX/MTBE/Naph. (8020)	TPH - HCID	TPH - D Extended	MTBE	Remarks
B-1	5	W		cont. HCl No PAH	2/21/00 9:52	X		X												
B-5	5				2/21/00 12:33	X		X												
B-6	4				2/21/00 13:05			X											X	
B-7	3				2/21/00 7:15	X														
B-10	5				2/21/00 10:55	X		X												
B-11	5				2/21/00 11:25	X		X												
B-12	5				2/21/00 11:54	X		X												
B-13	5	W			2/21/00 10:27	X		X												
TB	2																			

MJB0828

Lab Sample No.

Relinquished By (Signature) <u>[Signature]</u>	Organization <u>BTS</u>	Date/Time <u>2/22/00 9:00</u>	Received By (Signature) <u>[Signature]</u>	Organization _____	Date/Time <u>2-22-00</u>	Iced Y/N _____	Turn Around Time (Circle One) 24 Hrs. 48 Hrs. 5 Days 10 Days As Contracted
Relinquished By (Signature) <u>[Signature]</u>	Organization _____	Date/Time _____	Received By (Signature) <u>[Signature]</u>	Organization _____	Date/Time <u>2/22/00 10:10</u>	Iced Y/N _____	
Relinquished By (Signature) _____	Organization _____	Date/Time _____	Received For Laboratory By (Signature) _____	Organization _____	Date/Time _____	Iced Y/N _____	

COC-3-DWG07-5081C1

Field Data Sheets

WELL GAUGING DATA

Project # 000221-N-1 Date 2/21/00 Client Clerron

Site 1802 Webster St Clerron
Alameda

Well ID	Well Size (in.)	Sheen / Odor	Depth to Immiscible Liquid (ft.)	Thickness of Immiscible Liquid (ft.)	Volume of Immiscibles Removed (ml)	Depth to water (ft.)	Depth to well bottom (ft.)	Survey Point: TOB or TOC	(=10)
A-1	2		4.15	.08	50ml	4.23	11.09	TOC	9
B-1	2					4.59	15.93		2
B-5	2					3.51	18.12		7
B-4	2					4.46	18.30		B
B-7	2					4.00	13.47		1
B-10	2					4.35	16.03		4
B-11	2					4.24	14.27		5
B-12	2					4.31	15.08		6
B-13	2					4.24	13.93		3
<p>A-1 is 6" well with 2" opening at top</p>									

CHEVRON WELL MONITORING DATA SHEET

Project #: 000221#-1	Station #: 9-0290
Sampler: Garrett H	Date: 2/21/00
Well I.D.: A-1	Well Diameter: ② 3 4 ⑥ 8
Total Well Depth: 11.00	Depth to Water: 4.23
Depth to Free Product: 4.15	Thickness of Free Product (feet): .08
Referenced to: <u>PVC</u> Grade	D.O. Meter (if req'd): YSI HACH

Purge Method:

- Bailer
 Disposable Bailer
 Middleburg
 Electric Submersible
- Waterra
 Peristaltic
 Extraction Pump
 Other _____

Sampling Method:

- Bailer
 Disposable Bailer
 Extraction Port
 Dedicated Tubing
 Other: _____

_____ (Gals.) X _____	=	_____ Gals.
1 Case Volume	Specified Volumes	Calculated Volume

Well Diameter	Multiplier	Well Diameter	Multiplier
1"	0.04	4"	0.65
2"	0.16	6"	1.47
3"	0.37	Other	radius ² * 0.163

Time	Temp (°F)	pH	Cond.	Gals. Removed	Observations

Did well dewater? Yes No Gallons actually evacuated: _____

Sampling Time: _____ Sampling Date: 2/21/00

Sample I.D.: _____ Laboratory: STL Sequoia Other _____

Analyzed for: TPH-G BTEX MTBE TPH-D Other: _____

EB I.D. (if applicable): _____ @ _____ Time Duplicate I.D. (if applicable): _____

Analyzed for: TPH-G BTEX MTBE TPH-D Other: _____

D.O. (if req'd):	Pre-purge: _____ mg/L	Post-purge: _____ mg/L
O.R.P. (if req'd):	Pre-purge: _____ mV	Post-purge: _____ mV

CHEVRON WELL MONITORING DATA SHEET

Project #: 000221N-1	Station #: 9-0290
Sampler: Garrett 14	Date: 2/21/00
Well I.D.: B-1	Well Diameter: (2) 3 4 6 8
Total Well Depth: 15.92	Depth to Water: 4.59
Depth to Free Product:	Thickness of Free Product (feet):
Referenced to: PVC Grade	D.O. Meter (if req'd): YSI HACH

Purge Method:

- Bailer
 Disposable Bailer
 Middleburg
 Electric Submersible
- Waterra
 Peristaltic
 Extraction Pump
 Other _____

Sampling Method:

Bailer

- Disposable Bailer
 Extraction Port
 Dedicated Tubing

Other: _____

1.8 (Gals.) X 3 = 5.4 Gals.
 1 Case Volume Specified Volumes Calculated Volume

Well Diameter	Multiplier	Well Diameter	Multiplier
1"	0.04	4"	0.65
2"	0.16	6"	1.47
3"	0.37	Other	radius ² * 0.163

Time	Temp (°F)	pH	Cond.	Gals. Removed	Observations
9:40	63.8	6.7	1665	2	
9:45	64.7	6.8	1915	4	
9:49	65.2	6.8	1918	6	

Did well dewater? Yes No Gallons actually evacuated: 6

Sampling Time: 9:52 Sampling Date: 2/21/00

Sample I.D.: B-1 Laboratory: STL Sequoia Other

Analyzed for: TPH-G BTEX MTBE TPH-D Other:

EB I.D. (if applicable): @ Time Duplicate I.D. (if applicable):

Analyzed for: TPH-G BTEX MTBE TPH-D Other:

D.O. (if req'd): Pre-purge: _____ mg/L Post-purge: _____ mg/L

O.R.P. (if req'd): Pre-purge: _____ mV Post-purge: _____ mV

CHEVRON WELL MONITORING DATA SHEET

Project #: 000221N-1	Station #: 9-0290
Sampler: Garrett 14	Date: 2/21/00
Well I.D.: B-5	Well Diameter: (2) 3 4 6 8
Total Well Depth: 18.12	Depth to Water: 3.51
Depth to Free Product:	Thickness of Free Product (feet):
Referenced to: PVC Grade	D.O. Meter (if req'd): YSI HACH

Purge Method:

- Bailer
 Disposable Bailer
 Middleburg
 Electric Submersible
- Waterra
 Peristaltic
 Extraction Pump
 Other _____

Sampling Method:

Bailer

- Disposable Bailer
 Extraction Port
 Dedicated Tubing
 Other: _____

2.3 (Gals.) X 3 = 6.9 Gals.
 1 Case Volume Specified Volumes Calculated Volume

Well Diameter	Multiplier	Well Diameter	Multiplier
1"	0.04	4"	0.65
2"	0.16	6"	1.47
3"	0.37	Other	radius ² * 0.163

Time	Temp (°F)	pH	Cond.	Gals. Removed	Observations
12:20	66.8	6.9	62	2.5	
12:25	66.7	6.6	85	5.0	
12:31	66.7	6.7	89	7.0	

Did well dewater? Yes No Gallons actually evacuated: 7.0

Sampling Time: 12:33 Sampling Date: 2/21/00

Sample I.D.: B-5 Laboratory: STL Sequoia Other

Analyzed for: TPH-G BTEX MTBE TPH-D Other:

EB I.D. (if applicable): @ Time Duplicate I.D. (if applicable):

Analyzed for: TPH-G BTEX MTBE TPH-D Other:

D.O. (if req'd): Pre-purge: _____ mg/L Post-purge: _____ mg/L

O.R.P. (if req'd): Pre-purge: _____ mV Post-purge: _____ mV

CHEVRON WELL MONITORING DATA SHEET

Project #: 000221N-1	Station #: 9-0290
Sampler: Garrett H	Date: 2/21/00
Well I.D.: B-6	Well Diameter: <u>(2)</u> 3 4 6 8
Total Well Depth: 18.30	Depth to Water: 4.46
Depth to Free Product:	Thickness of Free Product (feet):
Referenced to: <u>PVC</u> Grade	D.O. Meter (if req'd): YSI HACH

Purge Method: TOL

Sampling Method: Bailer

Bailer
 Disposable Bailer
 Middleburg
 Electric Submersible

Waterra
 Peristaltic
 Extraction Pump
 Other: _____

Disposable Bailer
 Extraction Port
 Dedicated Tubing
 Other: _____

$2.2 \text{ (Gals.)} \times 3 = 6.6 \text{ Gals.}$
 1 Case Volume Specified Volumes Calculated Volume

Well Diameter	Multiplier	Well Diameter	Multiplier
1"	0.04	4"	0.65
2"	<u>0.16</u>	6"	1.47
3"	0.37	Other	radius * 0.165

Time	Temp (°F)	pH	Cond.	Gals. Removed	Observations
12:30	67.6	6.6	895	2.5 2.5	
12:55	66.8	6.6	880	5.0 5.0	
1:00	66.7	6.6	883	7.0	

Did well dewater? Yes No Gallons actually evacuated: 7.0

Sampling Time: 13:05 Sampling Date: 2/21/00

Sample I.D.: B-6 Laboratory: STL Sequoia Other

Analyzed for: TPH-G BTEX MTBE TPH-D Other:

EB I.D. (if applicable): @ Time Duplicate I.D. (if applicable):

Analyzed for: TPH-G BTEX MTBE TPH-D Other:

D.O. (if req'd): Pre-purge: _____ mg/L Post-purge: _____ mg/L

O.R.P. (if req'd): Pre-purge: _____ mV Post-purge: _____ mV

CHEVRON WELL MONITORING DATA SHEET

Project #: 000221N-1	Station #: 9-0290
Sampler: Garrett 14	Date: 2/21/00
Well I.D.: B-7	Well Diameter: (2) 3 4 6 8
Total Well Depth: 13.47	Depth to Water: 4.00
Depth to Free Product:	Thickness of Free Product (feet):
Referenced to: PVC Grade	D.O. Meter (if req'd): YSI HACH

Purge Method:

- Bailer
 Disposable Bailer
 Middleburg
 Electric Submersible
- Waterra
 Peristaltic
 Extraction Pump
 Other _____

Sampling Method:

- Bailer
 Disposable Bailer
 Extraction Port
 Dedicated Tubing
 Other: _____

$1.5 \text{ (Gals.)} \times 3 = 4.5 \text{ Gals.}$
 1 Case Volume Specified Volumes Calculated Volume

Well Diameter	Multiplier	Well Diameter	Multiplier
1"	0.04	4"	0.65
2"	0.16	6"	1.47
3"	0.37	Other	radius ² * 0.163

Time	Temp (°F)	pH	Cond.	Gals. Removed	Observations
9:05	62.2	6.8	675	1.5	
9:10	63.1	7.0	692	3.0	
9:13	62.9	7.1	686	4.5	

Did well dewater? Yes No Gallons actually evacuated: 4.5

Sampling Time: 9:15 Sampling Date: 2/21/00

Sample I.D.: B-7 Laboratory: STL Sequoia Other

Analyzed for: TPH-G BTEX MTBE TPH-D Other:

EB I.D. (if applicable): @ _____ Time Duplicate I.D. (if applicable):

Analyzed for: TPH-G BTEX MTBE TPH-D Other:

D.O. (if req'd):	Pre-purge:	mg/L	Post-purge:	mg/L
O.R.P. (if req'd):	Pre-purge:	mV	Post-purge:	mV

CHEVRON WELL MONITORING DATA SHEET

Project #: 000221N-1	Station #: 9-0290
Sampler: Garrett H	Date: 2/21/00
Well I.D.: B-10	Well Diameter: (2) 3 4 6 8
Total Well Depth: 16.03	Depth to Water: 4.35
Depth to Free Product:	Thickness of Free Product (feet):
Referenced to: PVC Grade	D.O. Meter (if req'd): YSI HACH

Purge Method:

- Bailer
 Disposable Bailer
 Middleburg
 Electric Submersible
- Waterra
 Peristaltic
 Extraction Pump
 Other _____

Sampling Method:

Bailer

- Disposable Bailer
 Extraction Port
 Dedicated Tubing

Other: _____

1.9	(Gals.) X	3	=	6	Gals.
1 Case Volume		Specified Volumes		Calculated Volume	

Well Diameter	Multiplier	Well Diameter	Multiplier
1"	0.04	4"	0.63
2"	0.16	6"	1.47
3"	0.37	Other	radius ² * 0.163

Time	Temp (°F)	pH	Cond.	Gals. Removed	Observations
10:45	64.4	6.7	1208	2	grass in water
10:50	64.9	6.7	1200	4	odor
10:53	64.7	6.7	1206	6	

Did well dewater? Yes No Gallons actually evacuated: 6

Sampling Time: 10:55 Sampling Date: 2/21/00

Sample I.D.: B-10 Laboratory: STL Sequoia Other

Analyzed for: TPH-G BTEX MTBE TPH-D Other:

EB I.D. (if applicable): @ Time Duplicate I.D. (if applicable):

Analyzed for: TPH-G BTEX MTBE TPH-D Other:

D.O. (if req'd):	Pre-purge:	mg/L	Post-purge:	mg/L
O.R.P. (if req'd):	Pre-purge:	mV	Post-purge:	mV

CHEVRON WELL MONITORING DATA SHEET

Project #: 000221N-1	Station #: 9-0290
Sampler: Garrett 14	Date: 2/21/00
Well I.D.: B-11	Well Diameter: <u>2</u> 3 4 6 8
Total Well Depth: 14.27	Depth to Water: 4.21
Depth to Free Product:	Thickness of Free Product (feet):
Referenced to: <u>PVC</u> Grade	D.O. Meter (if req'd): YSI HACH

Purge Method:

- | | |
|---|--|
| <input type="checkbox"/> Bailer | <input type="checkbox"/> Waterra |
| <input checked="" type="checkbox"/> Disposable Bailer | <input type="checkbox"/> Peristaltic |
| <input type="checkbox"/> Middleburg | <input type="checkbox"/> Extraction Pump |
| <input type="checkbox"/> Electric Submersible | <input type="checkbox"/> Other _____ |

Sampling Method:

- Bailer
- Disposable Bailer
- Extraction Port
- Dedicated Tubing

Other: _____

1.6 (Gals.) X 3 = 4.8 Gals.

1 Case Volume Specified Volumes Calculated Volume

Well Diameter	Multiplier	Well Diameter	Multiplier
1"	0.04	4"	0.65
2"	0.16	6"	1.47
3"	0.37	Other	radius ² * 0.163

Time	Temp (°F)	pH	Cond.	Gals. Removed	Observations
11:15	63.0	6.8	778	2	
11:19	64.0	6.9	765	4	
11:23	64.1	6.9	775	5	

Did well dewater? Yes No Gallons actually evacuated: 5

Sampling Time: 11:25 Sampling Date: 2/21/00

Sample I.D.: B-11 Laboratory: STL Sequoia Other

Analyzed for: TPH-G BTEX MTBE TPH-D Other:

EB I.D. (if applicable): @_{Time} Duplicate I.D. (if applicable):

Analyzed for: TPH-G BTEX MTBE TPH-D Other:

D.O. (if req'd): Pre-purge: mg/L Post-purge: mg/L

O.R.P. (if req'd): Pre-purge: mV Post-purge: mV

CHEVRON WELL MONITORING DATA SHEET

Project #: 000221N-1	Station #: 9-0290
Sampler: Garrett 14	Date: 2/21/00
Well I.D.: B-12	Well Diameter: (2) 3 4 6 8
Total Well Depth: 15.08	Depth to Water: 4.31
Depth to Free Product:	Thickness of Free Product (feet):
Referenced to: PVC Grade	D.O. Meter (if req'd): YSI HACH

Purge Method:

- Bailer
 Disposable Bailer
 Middleburg
 Electric Submersible
- Waterra
 Peristaltic
 Extraction Pump
 Other _____

Sampling Method:

- Bailer
 Disposable Bailer
 Extraction Port
 Dedicated Tubing
 Other: _____

$$\frac{1.7 \text{ (Gals.)} \times 3 \text{ Specified Volumes}}{1 \text{ Case Volume}} = 5.1 \text{ Gals. Calculated Volume}$$

Well Diameter	Multiplier	Well Diameter	Multiplier
1"	0.04	4"	0.65
2"	0.16	6"	1.47
3"	0.37	Other	radius ² * 0.163

Time	Temp (°F)	pH	Cond.	Gals. Removed	Observations
11:45	64.0	7.0	1207	2	
11:50	66.6	7.0	1180	4	
11:54	65.3	7.0	1193	5.5	

Did well dewater? Yes No Gallons actually evacuated: 5.5

Sampling Time: 11:56 Sampling Date: 2/21/00

Sample I.D.: B-12 Laboratory: STL Sequoia Other

Analyzed for: TPH-G BTEX MTBE TPH-D Other:

EB I.D. (if applicable): @ Time Duplicate I.D. (if applicable):

Analyzed for: TPH-G BTEX MTBE TPH-D Other:

D.O. (if req'd): Pre-purge: mg/L Post-purge: mg/L

O.R.P. (if req'd): Pre-purge: mV Post-purge: mV

CHEVRON WELL MONITORING DATA SHEET

Project #: 000221N-1	Station #: 9-0290
Sampler: Garrett H	Date: 2/21/00
Well I.D.: B-13	Well Diameter: (2) 3 4 6 8
Total Well Depth: 13.93	Depth to Water: 4.24
Depth to Free Product:	Thickness of Free Product (feet):
Referenced to: PVC Grade	D.O. Meter (if req'd): YSI HACH

Purge Method:

- Bailer
 Disposable Bailer
 Middleburg
 Electric Submersible
- Waterra
 Peristaltic
 Extraction Pump
 Other _____

Sampling Method:

- Bailer
 Disposable Bailer
 Extraction Port
 Dedicated Tubing
 Other: _____

1.6 (Gals.) X ~~3~~ = 4.8 Gals.
 I Case Volume Specified Volumes Calculated Volume

Well Diameter	Multiplier	Well Diameter	Multiplier
1"	0.04	4"	0.65
2"	0.16	6"	1.47
3"	0.37	Other	radius ² * 0.163

Time	Temp (°F)	pH	Cond.	Gals. Removed	Observations
10:18	64.3	6.9	515	2	
10:22	64.8	6.7	525	4	
10:24	64.7	6.8	531	5	

Did well dewater? Yes No Gallons actually evacuated: 5

Sampling Time: 10:27 Sampling Date: 2/21/00

Sample I.D.: B-B Laboratory: STL Sequoia Other

Analyzed for: TPH-G BTEX MTBE TPH-D Other:

EB I.D. (if applicable): _____ @ _____ Time Duplicate I.D. (if applicable):

Analyzed for: TPH-G BTEX MTBE TPH-D Other:

D.O. (if req'd): Pre-purge: _____ mg/L Post-purge: _____ mg/L

O.R.P. (if req'd): Pre-purge: _____ mV Post-purge: _____ mV