



Texaco Refining
and Marketing Inc

100 Cutting Boulevard
Richmond CA 94804

ENVIRONMENTAL
PROTECTION
97 AUG 12 PM 3:01

August 4, 1997

sl/27
1,800 ppb MTBE in well MW-B in 5/97.
latest amp w/ increase in TPHg/BTEX
concentrations by order of magnitude.

ENV - STUDIES, SURVEYS, & REPORTS
930 Springtown Blvd., Livermore, California
Quarterly Monitoring Report

Ms. Eva Chu
Alameda County Department of Environmental Health
1131 Harbor Bay Parkway, Fl. 2
Alameda, CA 94502-6577

Dear Ms. Chu:

This letter presents the results of groundwater monitoring and sampling conducted by Blaine Tech Services, Inc. on May 23, 1997, at the site referenced above (see Plate 1, Site Vicinity Map). Based on groundwater level measurements, the areal hydraulic gradient was estimated to be northwest (see Plate 2, Groundwater Gradient Map) at .002 ft. per ft. TPHg and benzene concentrations are shown on Plate 3. Tables 1 and 2 list historical groundwater monitoring data and analytical results, respectively. As requested by Alameda County Department of Environmental Health, monitoring wells MW-2, MW-4, MW-6, and MW-8 are sampled semi-annually in February and August; monitoring wells MW-1, MW-3, MW-5, MW-A, and MW-B are sampled quarterly; and monitoring wells MW-A, MW-B, and MW-1 through MW-8 are gauged quarterly.

The certified analytical report, chain-of-custody, field data sheets, bill of lading, and quarterly summary report are in the Appendix. Texaco's Standard Operating Procedures may be found in the fourth quarter, 1994 monitoring report.

If you have any questions or comments regarding this site, please call the Texaco Project Coordinator, Ms. Karen Petryna at (510) 236-9139.

Best Regards,
Texaco Refining and Marketing Inc

Rebecca Digerness
Groundwater Program Analyst

Karen E. Petryna, P. E.
Civil Engineer
Environment, Health and Safety



RBD:hs
C:\QMR\930S\QMR.LET

Enclosure

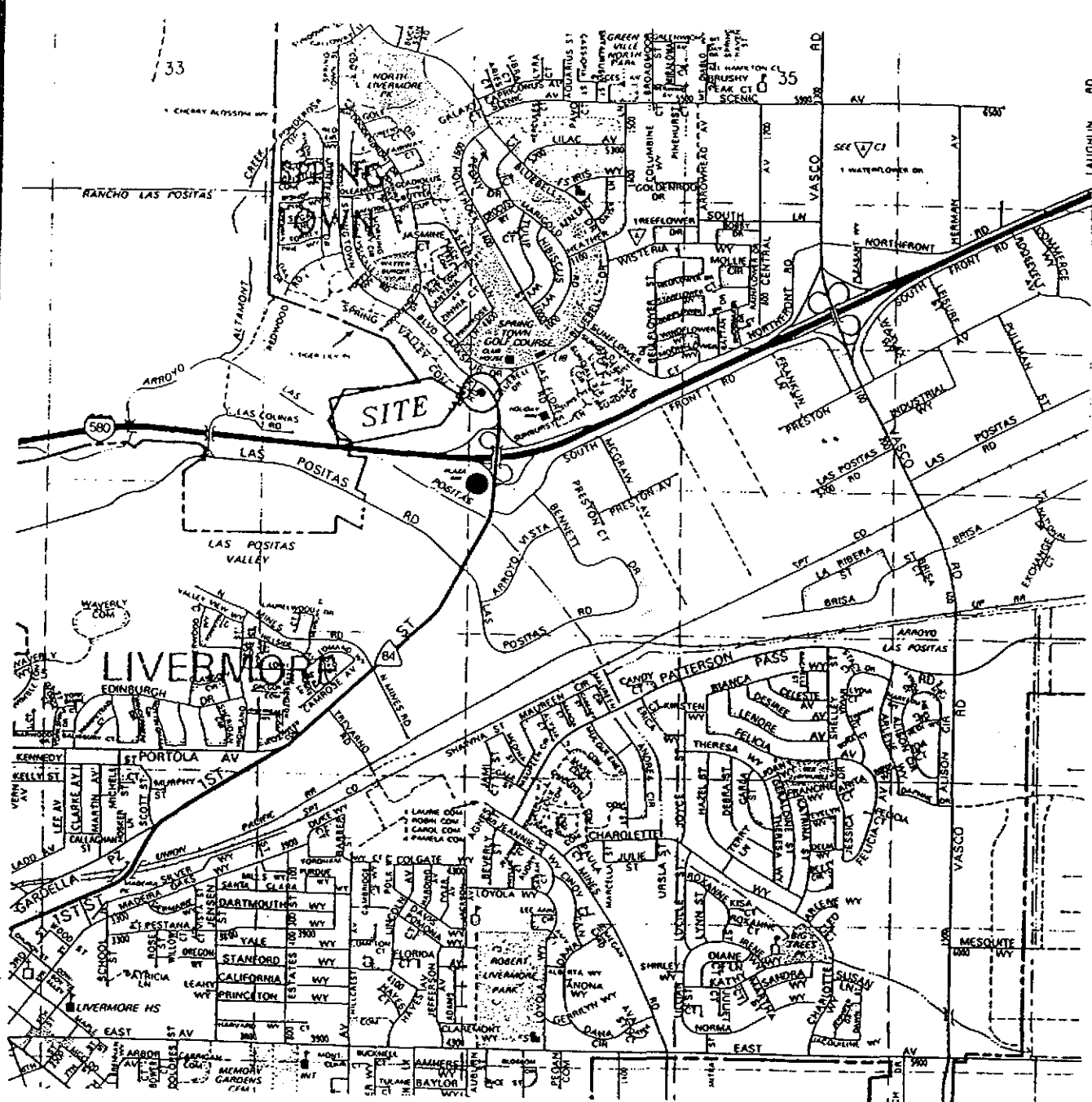
cc: Mr. Timothy Ross
Kaprealian Engineering, Inc.
2401 Stanwell Dr., Suite 400
Concord, CA 94520

Mr. Bob DeNinno
The Southland Corporation
19033 West Valley Hwy., D-104
Kent, WA 98032

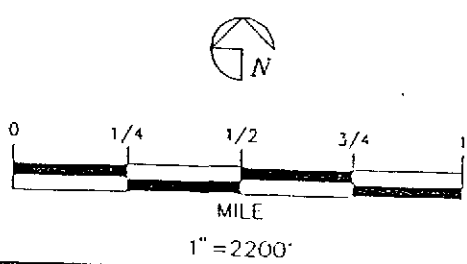
RAOFile-UCPFile (w/enclosure)

pr


GROUNDWATER MONITORING AND SAMPLING
Second Quarter, 1997
at the
Former Texaco Service Station
930 Springtown Boulevard
Livermore, California

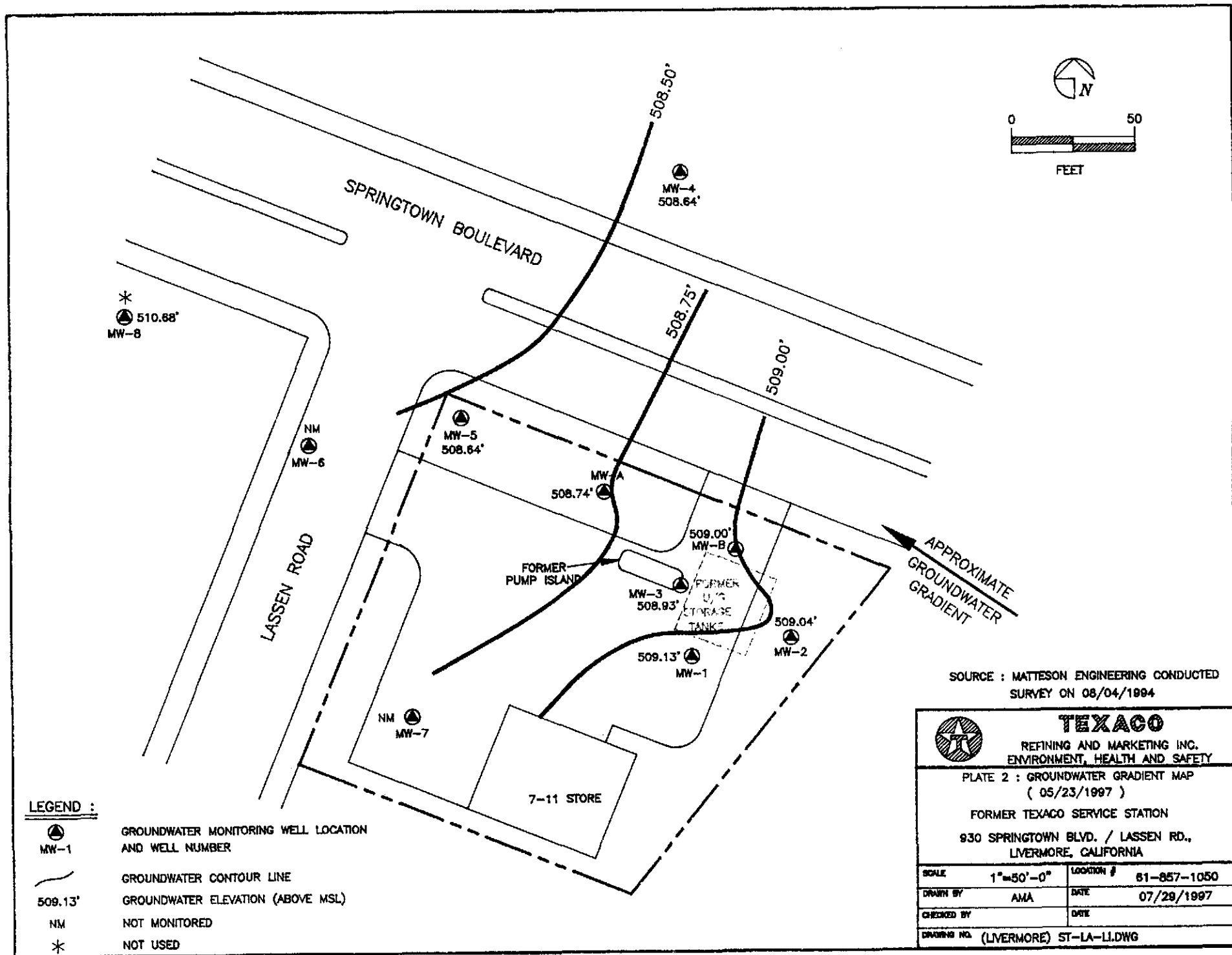


SOURCE:
 1993 THE THOMAS GUIDE
 ALAMEDA COUNTY, PAGE 51 (C3)




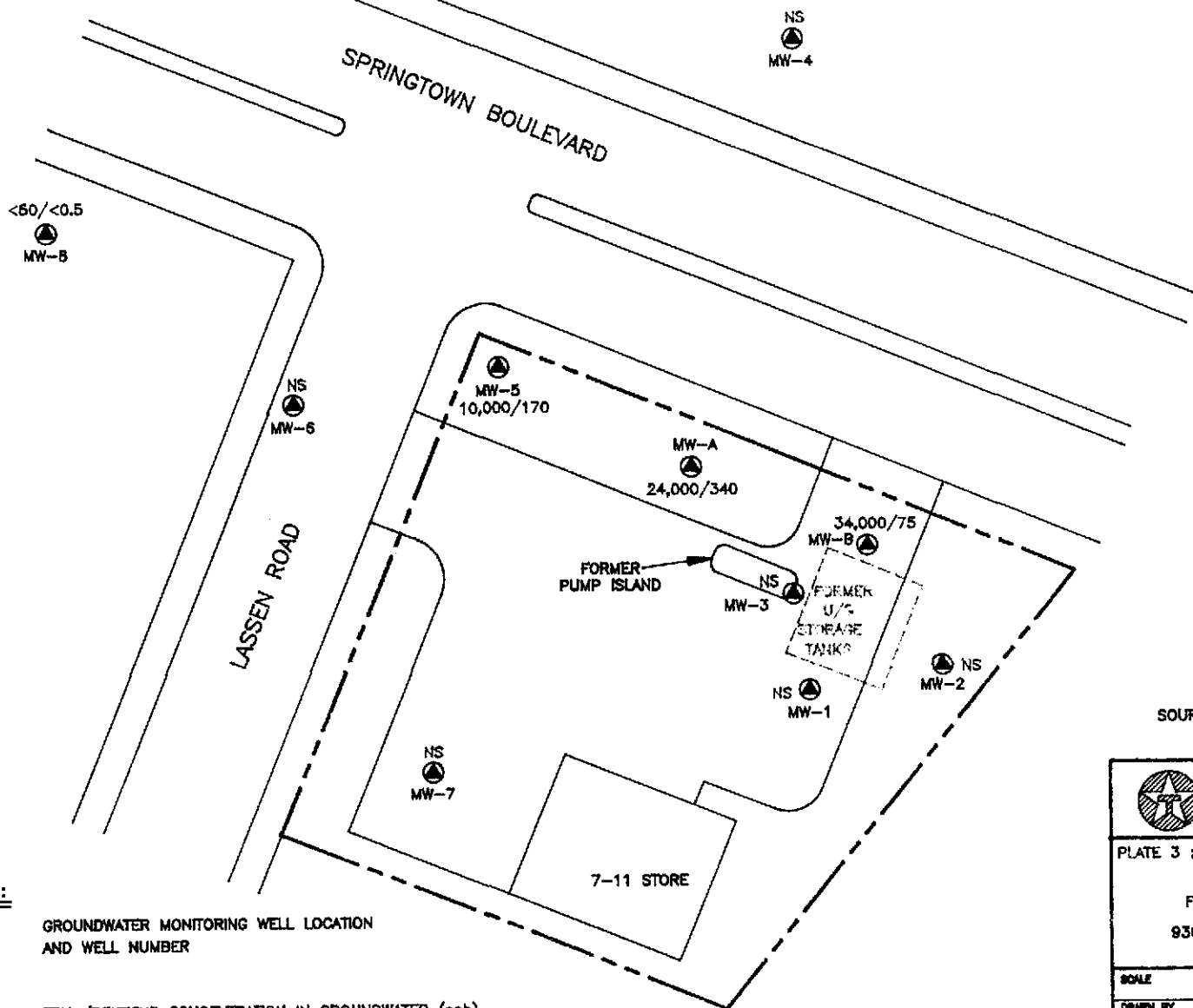
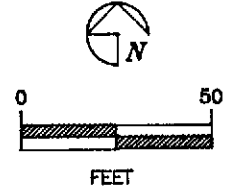
TEXACO
 REFINING AND MARKETING, INC.
 TEXACO ENVIRONMENTAL SERVICES

PLATE 1
 SITE VICINITY MAP
 FORMER TEXACO SERVICE STATION
 930 SPRINGTOWN BLVD. / LASSEN RD.,
 LIVERMORE, CALIFORNIA




SOURCE : MATTESON ENGINEERING CONDUCTED SURVEY ON 08/04/1994

 TEXACO REFINING AND MARKETING INC. ENVIRONMENT, HEALTH AND SAFETY	
PLATE 2 : GROUNDWATER GRADIENT MAP (05/23/1997)	
FORMER TEXACO SERVICE STATION 930 SPRINGTOWN BLVD. / LASSEN RD., LIVERMORE, CALIFORNIA	
SCALE	1"=50'-0"
LOCATION #	61-857-1050
DRAWN BY	AMA
DATE	07/29/1997
CHECKED BY	DATE
DRAWING NO. (LIVERMORE) ST-LA-LI.DWG	



LEGEND :

 GROUNDWATER MONITORING WELL LOCATION AND WELL NUMBER
 MW-1

$<50/<0.5$ TPHg/BENZENE CONCENTRATION IN GROUNDWATER (ppb)
 NS NOT SAMPLED

SOURCE : MATTESON ENGINEERING CONDUCTED SURVEY ON 08/04/1994


 TEXACO REFINING AND MARKETING INC. ENVIRONMENT, HEALTH AND SAFETY	
PLATE 3 : TPHg/BENZENE CONCENTRATION IN GROUND (05/23/1997)	
FORMER TEXACO SERVICE STATION 930 SPRINGTOWN BLVD. / LASSEN RD., LIVERMORE, CALIFORNIA	
SCALE	1"=50'-0"
LOCATION #	61-857-1050
DRAWN BY	AMA
DATE	07/29/1997
CHECKED BY	<i>KEP</i>
DATE	8/5/97
DRAWING NO. (LIVERMORE) ST-LA-LI.DWG	

Table 1
Groundwater Elevation Data
930 Springtown Boulevard, Livermore, CA

Well Number	Date Gauged	Top of Casing Elevation (feet, MSL)	Depth to Water (feet, TOC)	Elevation of Groundwater (feet, MSL)	Floating Product
MW-A	1/2/1992	520.10	13.61	506.49	---
MW-A	4/2/1992	520.10	12.44	507.66	---
MW-A	7/21/1992	520.10	13.35	506.75	---
MW-A	10/9/1992	520.10	12.92	507.18	SD
MW-A	1/11/1993	520.10	11.78	508.32	SD
MW-A	5/5/1993	520.10	11.39	508.71	SD
MW-A	8/9/1993	520.10	12.80	507.30	SD
MW-A	10/14/1993	520.10	13.48	506.62	SD
MW-A	1/24/1994	520.10	12.74	507.36	SD
MW-A	5/31/1994	520.10	12.28	507.82	---
MW-A	8/31/1994	520.10	13.20	506.90	SD
MW-A	11/2/1994	520.10	13.15	506.95	SD
MW-A	2/20/1995	520.10	11.71	508.39	---
MW-A	5/9/1995	520.10	12.37	507.73	---
MW-A	8/21/1995	520.10	11.37	508.73	---
MW-A	10/20/1995	520.10	12.04	508.06	---
MW-A	2/7/1996	520.10	10.11	509.99	---
MW-A	4/30/1996	520.10	10.28	509.82	---
MW-A	8/14/1996	520.10	10.82	509.28	---
MW-A	11/22/1996	520.10	10.97	509.13	---
MW-A	2/14/1997	520.10	10.00	510.10	---
MW-A	5/23/1997	520.10	11.36	508.74	SD
MW-B	1/2/1992	518.05	11.27	506.78	---
MW-B	4/2/1992	518.05	10.18	507.87	---
MW-B	7/21/1992	518.05	11.27	506.78	---
MW-B	10/9/1992	518.05	11.64	506.41	SD
MW-B	1/11/1993	518.05	9.65	508.40	SD
MW-B	5/5/1993	518.05	9.28	508.77	SD
MW-B	8/9/1993	518.05	11.02	507.03	SD
MW-B	10/14/1993	518.05	11.34	506.71	SD
MW-B	1/24/1994	518.05	10.54	507.51	SD
MW-B	5/31/1994	518.05	10.19	507.86	---
MW-B	8/31/1994	518.05	10.98	507.07	SD
MW-B	11/2/1994	518.05	10.90	507.15	SD
MW-B	2/20/1995	518.05	9.47	508.58	---
MW-B	5/9/1995	518.05	10.58	507.47	---
MW-B	8/21/1995	518.05	9.34	508.71	---
MW-B	10/20/1995	518.05	9.83	508.22	---
MW-B	2/7/1996	518.05	7.85	510.20	SD
MW-B	4/30/1996	518.05	8.02	510.03	---
MW-B	8/14/1996	518.05	8.66	509.39	SD
MW-B	11/22/1996	518.05	8.70	509.35	SD
MW-B	2/14/1997	518.05	7.75	510.30	SD
MW-B	5/23/1997	518.05	9.05	509.00	SD
MW-1	1/2/1992	520.61	14.11	506.50	---
MW-1	4/2/1992	520.61	12.98	507.63	---

Table 1
Groundwater Elevation Data
930 Springtown Boulevard, Livermore, CA

Well Number	Date Gauged	Top of Casing Elevation (feet, MSL)	Depth to Water (feet, TOC)	Elevation of Groundwater (feet, MSL)	Floating Product
MW-1	7/21/1992	520.61	13.92	506.69	---
MW-1	10/9/1992	520.61	14.25	506.36	---
MW-1	1/11/1993	520.61	12.30	508.31	---
MW-1	5/5/1993	520.61	11.88	508.73	---
MW-1	8/9/1993	520.61	13.63	506.98	---
MW-1	10/14/1993	520.61	13.91	506.70	---
MW-1	1/24/1993	520.61	13.12	507.49	---
MW-1	5/31/1994	520.61	12.74	507.87	---
MW-1	8/31/1994	520.61	13.68	506.93	---
MW-1	11/2/1994	520.61	13.48	507.13	---
MW-1	2/20/1995	520.61	12.02	508.59	---
MW-1	5/9/1995	520.61	12.83	507.78	---
MW-1	8/21/1995	520.61	11.93	508.68	---
MW-1	10/20/1995	520.61	12.40	508.21	---
MW-1	2/7/1996	520.61	10.42	510.19	---
MW-1	4/30/1996	520.61	10.48	510.13	---
MW-1	8/14/1996	520.61	11.18	509.43	---
MW-1	11/22/1996	520.61	11.10	509.51	---
MW-1	2/14/1997	520.61	10.25	510.36	---
MW-1	5/23/1997	520.61	11.48	509.13	---
MW-2	1/2/1992	518.29	11.96	506.33	---
MW-2	4/2/1992	518.29	10.89	507.40	---
MW-2	7/21/1992	518.29	11.55	506.74	---
MW-2	10/9/92 - 1/24/94	518.29	Not Monitored		
MW-2	5/31/1994	518.29	10.37	507.92	---
MW-2	8/31/1994	518.29	11.16	507.13	---
MW-2	11/2/1994	518.29	11.07	507.22	---
MW-2	2/20/1995	518.29	9.66	508.63	---
MW-2	5/9/1995	518.29	10.14	508.15	---
MW-2	8/21/1995	518.29	9.58	508.71	---
MW-2	10/20/1995	518.29	9.91	508.38	---
MW-2	2/7/1996	518.29	8.00	510.29	---
MW-2	4/30/1996	518.29	8.21	510.08	---
MW-2	8/14/1996	518.29	8.88	509.41	---
MW-2	11/22/1996	518.29	8.88	509.41	---
MW-2	2/14/1997	518.29	7.92	510.37	---
MW-2	5/23/1997	518.29	9.25	509.04	---
MW-3	1/2/1992	519.60	12.87	506.73	---
MW-3	4/2/1992	519.60	11.97	507.63	---
MW-3	7/21/1992	519.60	12.60	507.00	---
MW-3	10/9/1992	519.60	12.93	506.67	---
MW-3	1/11/1993	519.60	11.16	508.44	---
MW-3	5/5/1993	519.60	10.72	508.88	---
MW-3	8/9/1993	519.60	12.34	507.26	---
MW-3	10/14/1993	519.60	12.71	506.89	---
MW-3	1/24/1994	519.60	12.03	507.57	---

Table 1
Groundwater Elevation Data
930 Springtown Boulevard, Livermore, CA

Well Number	Date Gauged	Top of Casing Elevation (feet, MSL)	Depth to Water (feet, TOC)	Elevation of Groundwater (feet, MSL)	Floating Product
MW-3	5/31/1994	519.60	11.54	508.06	---
MW-3	8/31/1994	519.60	12.60	507.00	---
MW-3	11/2/1994	519.60	12.16	507.44	---
MW-3	2/20/1995	519.60	11.05	508.55	---
MW-3	5/9/1995	519.60	11.97	507.63	---
MW-3	8/21/1995	519.60	7.60	512.00	---
MW-3	10/20/1995	519.60	11.46	508.14	---
MW-3	2/7/1996	519.60	9.42	510.18	---
MW-3	4/30/1996	519.60	9.60	510.00	---
MW-3	8/14/1996	519.60	10.24	509.36	---
MW-3	11/22/1996	519.60	10.34	509.26	---
MW-3	2/14/1997	519.60	9.38	510.22	---
MW-3	5/23/1997	519.60	10.67	508.93	---
MW-4	1/2/1992	518.79	12.22	506.57	---
MW-4	4/2/1992	518.79	11.03	507.76	---
MW-4	7/21/1992	518.79	12.36	506.43	---
MW-4	10/9/1992	518.79	12.40	506.39	---
MW-4	1/11/1993	518.79	10.72	508.07	---
MW-4	5/5/1993	518.79	10.21	508.58	---
MW-4	8/9/1993	518.79	12.25	506.54	---
MW-4	10/14/1993	518.79	12.58	506.21	---
MW-4	1/24/1994	518.79	11.72	507.07	---
MW-4	5/31/1994	518.79	11.29	507.50	---
MW-4	8/31/1994	518.79	12.00	506.79	---
MW-4	11/2/1994	518.79	11.96	506.83	---
MW-4	2/20/1995	518.79	10.42	508.37	---
MW-4	5/9/1995	518.79	11.22	507.57	---
MW-4	8/21/1995	518.79	10.51	508.28	---
MW-4	10/20/1995	518.79	10.86	507.93	---
MW-4	2/7/1996	518.79	8.93	509.86	---
MW-4	4/30/1996	518.79	9.03	509.76	---
MW-4	8/14/1996	518.79	9.84	508.95	---
MW-4	11/22/1996	518.79	9.73	509.06	---
MW-4	2/14/1997	518.79	8.85	509.94	---
MW-4	5/23/1997	518.79	10.15	508.64	---
MW-5	1/2/1992	521.19	14.56	506.63	---
MW-5	4/2/1992	521.19	13.58	507.61	---
MW-5	7/21/1992	521.19	13.77	507.42	---
MW-5	10/9/1992	521.19	14.09	507.10	---
MW-5	1/11/1993	521.19	12.24	508.95	---
MW-5	5/5/1993	521.19	11.90	509.29	---
MW-5	8/9/1993	521.19	13.35	507.84	---
MW-5	10/14/1993	521.19	13.89	507.30	---
MW-5	1/24/1994	521.19	13.32	507.87	---
MW-5	5/31/1994	521.19	12.75	508.44	---
MW-5	8/31/1994	521.19	14.34	506.85	---

Table 1
Groundwater Elevation Data
930 Springtown Boulevard, Livermore, CA

Well Number	Date Gauged	Top of Casing Elevation (feet, MSL)	Depth to Water (feet, TOC)	Elevation of Groundwater (feet, MSL)	Floating Product
MW-5	11/2/1994	521.19	14.22	506.97	---
MW-5	2/20/1995	521.19	12.78	508.41	SD
MW-5	5/9/1995	521.19	13.41	507.78	---
MW-5	8/21/1995	521.19	12.32	508.87	---
MW-5	10/20/1995	521.19	13.28	507.91	---
MW-5	2/7/1996	521.19	11.31	509.88	---
MW-5	4/30/1996	521.19	11.52	509.67	---
MW-5	8/14/1996	521.19	12.03	509.16	---
MW-5	11/22/1996	521.19	12.22	508.97	SD
MW-5	2/14/1997	521.19	11.20	509.99	SD
MW-5	5/23/1997	521.19	12.55	508.64	---
MW-6	1/2/1992	522.18	16.64	505.54	---
MW-6	4/2/1991	522.18	15.61	506.57	---
MW-6	7/21/1992	522.18	15.53	506.65	---
MW-6	10/9/1992	522.18	15.69	506.49	---
MW-6	1/11/93 - 5/5/93	522.18	Not Monitored		
MW-6	8/9/1993	522.18	14.50	507.68	---
MW-6	10/14/1993	522.18	Not Monitored		
MW-6	1/24/1994	522.18	15.09	507.09	---
MW-6	5/31/1994	522.18	14.64	507.54	---
MW-6	8/31/1994	522.18	15.32	506.86	---
MW-6	11/2/1994	522.18	15.32	506.86	---
MW-6	2/20/1995	522.18	14.07	508.11	---
MW-6	5/9/1995	522.18	14.30	507.88	---
MW-6	8/21/1995	522.18	Well Inaccessible		
MW-6	10/20/1995	522.18	14.31	507.87	---
MW-6	2/7/96 - 5/23/97	522.18	Not Monitored		
MW-7	1/2/1992	522.19	11.17	511.02	---
MW-7	4/2/1992	522.19	10.34	511.85	---
MW-7	7/21/1992	522.19	9.02	513.17	---
MW-7	10/9/92 - 1/24/94	522.19	Not Monitored		
MW-7	5/31/1994	522.19	9.42	512.77	---
MW-7	8/31/1994	522.19	6.84	515.35	---
MW-7	11/2/1994	522.19	6.48	515.71	---
MW-7	2/20/1995	522.19	7.71	514.48	---
MW-7	5/9/1995	522.19	7.65	514.54	---
MW-7	8/21/1995	522.19	7.83	514.36	---
MW-7	10/20/1995	522.19	8.61	513.58	---
MW-7	2/7/96 - 5/23/97	522.19	Not Monitored		
MW-8	1/2/1992	524.03	18.42	505.61	---
MW-8	4/2/1992	524.03	17.39	506.64	---
MW-8	7/21/1992	524.03	14.02	510.01	---
MW-8	10/9/92 - 1/24/94	524.03	Not Monitored		
MW-8	5/31/1994	524.03	19.65	504.38	---
MW-8	8/31/1994	524.03	17.40	506.63	---

Table 1
Groundwater Elevation Data
930 Springtown Boulevard, Livermore, CA

Well Number	Date Gauged	Top of Casing Elevation (feet, MSL)	Depth to Water (feet, TOC)	Elevation of Groundwater (feet, MSL)	Floating Product
MW-8	11/2/1994	524.03	17.38	506.65	---
MW-8	2/20/1995	524.03	15.99	508.04	---
MW-8	5/9/1995	524.03	16.54	507.49	---
MW-8	8/21/1995	524.03	15.77	508.26	---
MW-8	10/20/1995	524.03	16.24	507.79	---
MW-8	2/7/1996	524.03	14.42	509.61	---
MW-8	4/30/1996	524.03	14.65	509.38	---
MW-8	8/14/1996	524.03	15.08	508.95	---
MW-8	11/22/1996	524.03	15.35	508.68	---
MW-8	2/14/1997	524.03	14.32	509.71	---
MW-8	5/23/1997	524.03	13.35	510.68	---
MSL = Mean Sea Level					
TOC = Top of Casing					
--- = None Present					
SD = Sheen detected in purge water					

Table 2
Groundwater Analytical Data
930 Springtown Boulevard, Livermore, CA

Well Number	Date Sampled	TPHg (ppb)	Benzene (ppb)	Toluene (ppb)	Ethyl-benzene (ppb)	Xylenes (ppb)	MTBE (ppb)
MW-A	1/2/1992	SP	SP	SP	SP	SP	NA
MW-A	4/2/1992	27,000	1,200	570	1,700	2,300	NA
MW-A	7/21/1992	57,000	1,500	1,800	2,700	7,100	NA
MW-A	10/9/1992	56,000	2,900	2,600	4,600	12,000	NA
MW-A	1/11/93 - 10/14/93	NS	NS	NS	NS	NS	NA
MW-A	1/24/1994	1,400,000	6,900	2,100	15,000	38,000	NA
MW-A	5/31/1994	48,000	1,200	900	1,900	4,200	NA
MW-A	8/31/1994	24,000	140	120	830	1,500	NA
MW-A	11/2/1994	15,000	230	360	1,100	1,800	NA
MW-A	2/20/1995	12,000	290	330	570	1,300	NA
MW-A	5/9/1995	1,200	6.1	5.9	12	15	NA
MW-A	8/21/1995	9,600	85	140	250	860	160
MW-A	10/20/1995	360	5.2	7.9	15	43	NA
MW-A	2/7/1996	6,100	130	180	320	840	NA
MW-A	4/30/1996	410	1.2	0.67	1.2	1.5	NA
MW-A	8/14/1996	3,000	65	75	170	460	57
MW-A	11/22/1996	6,300	100	170	310	710	64
MW-A	2/14/1997	8,100	140	180	700	1,600	<300
MW-A	5/23/1997	24,000	340	520	1,600	3,800	<2000
MW-B	1/2/1992	SP	SP	SP	SP	SP	NA
MW-B	4/2/1992	1,900	ND	39	24	35	NA
MW-B	7/21/1992	16,000	180	1,600	270	1,100	NA
MW-B	10/9/1992	38,000	490	8,300	1,400	5,100	NA
MW-B	1/11/93 - 10/14/93	NS	NS	NS	NS	NS	NA
MW-B	1/24/1994	23,000	110	1,700	600	1,900	NA
MW-B	5/31/1994	13,000	780	310	370	1,400	NA
MW-B	8/31/1994	35,000	160	2,800	1,000	4,500	NA
MW-B	11/2/1994	2,500	170	3,200	1,100	4,700	NA
MW-B	2/20/1995	10,000	46	1,400	330	1,200	NA
MW-B	5/9/1995	4,100	9.1	47	26	30	NA
MW-B	8/21/1995	4,000	9.6	110	120	270	98
MW-B	10/20/1995	9,300	35	1,300	370	1,300	NA
MW-B	2/7/1996	8,900	33	700	110	360	NA
MW-B	4/30/1996	5,500	17	460	120	400	NA
MW-B	8/14/1996	9,000	<5	260	120	320	<300
MW-B	11/22/1996	560,000	56	2,400	1,600	5,500	<3000
MW-B	2/14/1997	4,600	5.2	110	72	210	<300
MW-B	5/23/1997	34,000	75	1,700	590	2,100	1,800
MW-1	1/2/1992	16	6	ND	ND	ND	NA
MW-1	4/2/1992	ND	ND	ND	ND	ND	NA
MW-1	7/21/1992	<50	3.2	<0.5	<0.5	<0.5	NA
MW-1	10/9/1992	<50	8.5	<0.5	<0.5	<0.5	NA
MW-1	1/11/1993	<50	<0.5	<0.5	<0.5	<0.5	NA
MW-1	5/5/1993	<50	<0.5	<0.5	<0.5	<0.5	NA
MW-1	8/9/1993	<50	<0.5	<0.5	<0.5	<0.5	NA
MW-1	10/14/1993	440	16	2.9	2.9	11	NA

Table 2
Groundwater Analytical Data
930 Springtown Boulevard, Livermore, CA

Well Number	Date Sampled	TPHg (ppb)	Benzene (ppb)	Toluene (ppb)	Ethyl-benzene (ppb)	Xylenes (ppb)	MTBE (ppb)
MW-1	5/31/1994	<50	<0.5	<0.5	<0.5	<0.5	NA
MW-1	8/31/1994	<50	<0.5	<0.5	<0.5	<0.5	NA
MW-1	11/2/1994	<50	<0.5	<0.5	<0.5	<0.5	NA
MW-1	2/20/1995	<50	<0.5	<0.5	<0.5	<0.5	NA
MW-1	5/9/1995	450	22	25	23	100	NA
MW-1	8/21/1995	58	<0.5	1.5	1.8	4.5	<10
MW-1	10/20/1995	<50	<0.5	<0.5	<0.5	<0.5	NA
MW-1	2/7/1996	<50	<0.5	<0.5	<0.5	<0.5	NA
MW-1	4/30/1996	NS	NS	NS	NS	NS	NA
MW-1	8/14/1996	<50	<0.5	<0.5	<0.5	<0.5	<30
MW-1	11/22/1996	NS	NS	NS	NS	NS	NA
MW-1	2/14/1997	<50	<0.5	<0.5	<0.5	<0.5	<30
MW-1	5/23/1997	NS	NS	NS	NS	NS	NS
MW-2	1/2/1992	ND	ND	ND	ND	ND	NA
MW-2	4/2/1991	ND	ND	ND	ND	ND	NA
MW-2	7/21/1992	NS	NS	NS	NS	NS	NA
MW-2	10/9/1992	NS	NS	NS	NS	NS	NA
MW-2	1/11/1993	NS	NS	NS	NS	NS	NA
MW-2	5/5/1993	NS	NS	NS	NS	NS	NA
MW-2	8/9/1993	NS	NS	NS	NS	NS	NA
MW-2	10/14/1993	NS	NS	NS	NS	NS	NA
MW-2	1/24/1994	NS	NS	NS	NS	NS	NA
MW-2	5/31/1994	NS	NS	NS	NS	NS	NA
MW-2	8/31/1994	<50	<0.5	<0.5	<0.5	<0.5	NA
MW-2	11/2/1994	NS	NS	NS	NS	NS	NA
MW-2	2/20/1995	<50	<0.5	<0.5	<0.5	<0.5	NA
MW-2	5/9/1995	NS	NS	NS	NS	NS	NA
MW-2	8/21/1995	<50	<0.5	<0.5	<0.5	<0.5	<10
MW-2	10/20/1995	NS	NS	NS	NS	NS	NA
MW-2	2/7/1996	<50	<0.5	<0.5	<0.5	<0.5	NA
MW-2	4/30/1996	NS	NS	NS	NS	NS	NA
MW-2	8/14/1996	<50	<0.5	<0.5	<0.5	<0.5	<30
MW-2	11/22/1996	NS	NS	NS	NS	NS	NA
MW-2	2/14/1997	<50	<0.5	<0.5	<0.5	<0.5	<30
MW-2	5/23/1997	NS	NS	NS	NS	NS	NS
MW-3	1/2/1992	340	0.4	ND	ND	ND	NA
MW-3	4/2/1992	160	5	ND	0.3	0.5	NA
MW-3	7/21/1992	260	1.7	<0.5	<0.5	<0.5	NA
MW-3	10/9/1992	88	<0.5	<0.5	<0.5	<0.5	NA
MW-3	1/11/1993	130	<0.5	<0.5	<0.5	<0.5	NA
MW-3	5/5/1993	340	1.8	<0.5	1.3	<0.5	NA
MW-3	8/9/1993	610	18	<0.5	2.4	0.9	NA
MW-3	10/14/1993	<50	<0.5	<0.5	<0.5	<0.5	NA
MW-3	1/24/1994	320	3.5	<0.5	<0.5	<0.5	NA
MW-3	5/31/1994	830	11	12	5.0	1.2	NA
MW-3	8/31/1994	660	2	<0.5	1	<0.5	NA

Table 2
Groundwater Analytical Data
930 Springtown Boulevard, Livermore, CA

Well Number	Date Sampled	TPHg (ppb)	Benzene (ppb)	Toluene (ppb)	Ethyl-benzene (ppb)	Xylenes (ppb)	MTBE (ppb)
MW-3	11/2/1994	1,500	260	36	34	76	NA
MW-3	2/20/1995	410	1.2	1.9	1.4	2.2	NA
MW-3	5/9/1995	730	23	43	21	95	NA
MW-3	8/21/1995	<50	<0.5	<0.5	<0.5	<0.5	<10
MW-3	10/20/1995	<50	<0.5	<0.5	<0.5	<0.5	NA
MW-3	2/7/1996	<50	<0.5	<0.5	<0.5	<0.5	NA
MW-3	4/30/1996	NS	NS	NS	NS	NS	NA
MW-3	8/14/1996	<50	<0.5	0.60	<0.5	<0.5	<30
MW-3	11/22/1996	NS	NS	NS	NS	NS	NA
MW-3	2/14/1997	<50	<0.5	<0.5	<0.5	<0.5	<30
MW-3	5/23/1997	NS	NS	NS	NS	NS	NS
MW-4	1/2/1992	ND	ND	ND	ND	ND	NA
MW-4	4/2/1992	ND	ND	ND	ND	ND	NA
MW-4	7/21/1992	<50	<0.5	<0.5	<0.5	<0.5	NA
MW-4	10/9/1992	<50	<0.5	<0.5	<0.5	<0.5	NA
MW-4	1/11/1993	<50	<0.5	<0.5	<0.5	<0.5	NA
MW-4	5/5/1993	<50	<0.5	<0.5	<0.5	<0.5	NA
MW-4	8/9/1993	<50	<0.5	<0.5	<0.5	<0.5	NA
MW-4	10/14/1993	<50	<0.5	<0.5	<0.5	<0.5	NA
MW-4	1/24/1994	<50	<0.5	<0.5	<0.5	<0.5	NA
MW-4	5/31/1994	NS	NS	NS	NS	NS	NA
MW-4	8/31/1994	<50	<0.5	<0.5	<0.5	<0.5	NA
MW-4	11/2/1994	NS	NS	NS	NS	NS	NA
MW-4	2/20/1995	<50	<0.5	<0.5	<0.5	<0.5	NA
MW-4	5/9/1995	NS	NS	NS	NS	NS	NA
MW-4	8/21/1995	<50	<0.5	<0.5	<0.5	<0.5	<10
MW-4	10/20/1995	<50	<0.5	<0.5	<0.5	<0.5	NA
MW-4	2/7/1996	<50	<0.5	<0.5	<0.5	<0.5	NA
MW-4	4/30/1996	NS	NS	NS	NS	NS	NA
MW-4	8/14/1996	<50	<0.5	<0.5	<0.5	<0.5	<30
MW-4	11/22/1996	NS	NS	NS	NS	NS	NA
MW-4	2/14/1997	<50	<0.5	<0.5	<0.5	<0.5	<30
MW-4	5/23/1997	NS	NS	NS	NS	NS	NS
MW-5	1/2/1992	1,800	74	41	84	94	NA
MW-5	4/2/1992	ND	ND	ND	ND	ND	NA
MW-5	7/21/1992	1,000	69	16	40	31	NA
MW-5	10/9/1992	3,400	890	51	110	110	NA
MW-5	1/11/1993	15,000	460	110	900	370	NA
MW-5	5/5/1993	4,500	160	19	280	110	NA
MW-5	8/9/1993	2,300	180	19	130	80	NA
MW-5	10/14/1993	2,200	160	27	90	64	NA
MW-5	1/24/1994	2,600	69	11	65	25	NA
MW-5	5/31/1994	3,100	130	64	140	120	NA
MW-5	8/31/1994	600	20	2.9	14	7.1	NA
MW-5	11/2/1994	2,300	68	18	52	54	NA
MW-5	2/20/1995	12,000	130	<30	240	138	NA

Table 2
Groundwater Analytical Data
930 Springtown Boulevard, Livermore, CA

Well Number	Date Sampled	TPHg (ppb)	Benzene (ppb)	Toluene (ppb)	Ethyl-benzene (ppb)	Xylenes (ppb)	MTBE (ppb)
MW-5	5/9/1995	2,500	57	60	54	37	NA
MW-5	8/21/1995	11,000	91	28	140	120	<100
MW-5	10/20/1995	2,300	38	3.8	28	19	NA
MW-5	2/7/1996	1,800	35	8.1	37	20	NA
MW-5	4/30/1996	NS	NS	NS	NS	NS	NA
MW-5	8/14/1996	3,500	130	22	170	47	71
MW-5	11/22/1996	3,500	160	15	190	28	<200
MW-5	2/14/1997	2,900	150	54	330	68	<300
MW-5	5/23/1997	10,000	170	98	380	68	<200
MW-6	1/2/1992	23	ND	0.3	0.6	3	NA
MW-6	4/2/1992	ND	ND	ND	ND	ND	NA
MW-6	7/21/1992	<50	<0.5	<0.5	<0.5	<0.5	NA
MW-6	10/9/1992	<50	<0.5	<0.5	<0.5	<0.5	NA
MW-6	1/11/1993	NS	NS	NS	NS	NS	NA
MW-6	5/5/1993	NS	NS	NS	NS	NS	NA
MW-6	8/9/1993	<50	<0.5	<0.5	<0.5	<0.5	NA
MW-6	10/14/1993	NS	NS	NS	NS	NS	NA
MW-6	1/24/1994	<50	<0.5	<0.5	<0.5	<0.5	NA
MW-6	5/31/1994	NS	NS	NS	NS	NS	NA
MW-6	8/31/1994	<50	<0.5	<0.5	<0.5	<0.5	NA
MW-6	11/2/1994	NS	NS	NS	NS	NS	NA
MW-6	2/20/1995	<50	<0.5	<0.5	<0.5	<0.5	NA
MW-6	5/9/95 - 5/23/97	NS	NS	NS	NS	NS	NA
MW-7	1/2/1992	NS	NS	NS	NS	NS	NA
MW-7	4/2/1992	ND	ND	ND	ND	ND	NA
MW-7	7/21/92-5/23/97	NS	NS	NS	NS	NS	NA
MW-8	1/2/1992	12,000	32	980	200	760	NA
MW-8	4/2/1992	ND	ND	ND	ND	ND	NA
MW-8	7/21/1992	NS	NS	NS	NS	NS	NA
MW-8	10/9/1993	NS	NS	NS	NS	NS	NA
MW-8	1/11/1993	NS	NS	NS	NS	NS	NA
MW-8	5/5/1993	NS	NS	NS	NS	NS	NA
MW-8	8/9/1993	NS	NS	NS	NS	NS	NA
MW-8	10/14/1993	NS	NS	NS	NS	NS	NA
MW-8	1/24/1994	NS	NS	NS	NS	NS	NA
MW-8	5/31/1994	NS	NS	NS	NS	NS	NA
MW-8	8/31/1994	<50	<0.5	<0.5	<0.5	<0.5	NA
MW-8	11/2/1994	NS	NS	NS	NS	NS	NA
MW-8	2/20/1995	<50	<0.5	<0.5	<0.5	<0.5	NA
MW-8	5/9/1995	NS	NS	NS	NS	NS	NA
MW-8	8/21/1995	<50	<0.5	<0.5	0.67	0.62	<10
MW-8	10/20/1995	NS	NS	NS	NS	NS	NA
MW-8	2/7/1996	<50	7.0	<0.5	<0.5	<0.5	NA
MW-8	4/30/1996	61	9.6	<0.5	<0.5	<0.5	NA
MW-8	8/14/1996	<50	0.73	<0.5	<0.5	<0.5	<30

Table 2
Groundwater Analytical Data
930 Springtown Boulevard, Livermore, CA

Well Number	Date Sampled	TPHg (ppb)	Benzene (ppb)	Toluene (ppb)	Ethyl-benzene (ppb)	Xylenes (ppb)	MTBE (ppb)
MW-8	11/22/1996	120	5.9	2.2	2.4	8.3	<30
MW-8	2/14/1997	<50	<0.5	<0.5	<0.5	<0.5	<30
MW-8	5/23/1997	<50	<0.5	<0.5	<0.5	<0.5	<30
MTBE - Methyl-tert-butylether							
NS = Not Sampled							
ND = None Detected							
SP = Separate-phase petroleum hydrocarbons							
TPHg = Total petroleum hydrocarbons as gasoline							
< = Less than the detection limit for the specified method of analysis							

801 Western Avenue
Glendale, CA 91201
818/247-5737
Fax: 818/247-9797

LOG NO: G97-05-553

Received: 28 MAY 97
Mailed : 05 JUN 97

Ms. Rebecca Digerness
Texaco Environmental Services
108 Cutting Boulevard
Richmond, CA 94804

Purchase Order: 94-1446346+4370

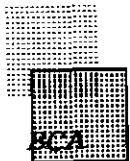
Requisition: 618571050
Project: FKPE9023L

REPORT OF ANALYTICAL RESULTS

AQUEOUS

SAMPLE DESCRIPTION	DATE SAMPLED	TPH/BTEX (CADHS/8020)	ANALYTICAL RESULTS									
			Date Analyzed Date	Dilution Factor Times	TPH-g ug/L	Benzene ug/L	Toluene ug/L	Ethyl-Benzene ug/L	Methyl-tert-butylether ug/L	Total Xylenes Isomers ug/L	Carbon Range	
RDL				1	50	0.5	0.5	0.5	0.5	30	0.5	
1*MW-1	05/23/97	06/03/97		50	24000	340	520	1600	<2000	3800		C6-C12
2*MW-B	05/23/97	06/04/97		50	34000	75	1700	590	1800	2100		C6-C12
3*MW-5	05/23/97	06/04/97		5	10000	170	98	380	<200	68		C6-C12
4*MW-8	05/23/97	06/03/97		1	<50	<0.5	<0.5	<0.5	<30	<0.5		C6-C12

Karen Petryna
930 Springtown Blvd., Livermore
Alameda County



801 Western Avenue
Glendale, CA 91201
818/247-5737
Fax: 818/247-9797

LOG NO: G97-05-553

Received: 28 MAY 97
Mailed : 05 JUN 97

Ms. Rebecca Digerness
Texaco Environmental Services
108 Cutting Boulevard
Richmond, CA 94804

Purchase Order: 94-1446346+4370

Requisition: 618571050
Project: FKEP9023L

REPORT OF ANALYTICAL RESULTS

Page 2

AQUEOUS

SAMPLE DESCRIPTION	DATE SAMPLED	TPH/BTEX (CADHS/8020)	Date Analyzed	Dilution Factor	TPH-g	Benzene	Toluene	Ethyl-Benzene	Methyl-tert-butylether	Total Xylenes Isomers	Carbon Range
			Date	Times	ug/L	ug/L	ug/L	ug/L	ug/L	ug/L	ug/L
RDL				1	50	0.5	0.5	0.5	30	0.5	
5*EB	05/23/97	06/04/97		1	<50	<0.5	<0.5	<0.5	<30	<0.5	C6-C12

Greta Galoustian
Greta Galoustian, Laboratory Director

The analytical results within this report relate only to the specific compounds and samples investigated and may not necessarily reflect other apparently similar material from the same or a similar location.

This report shall not be reproduced, except in full, without the written approval of VOC. No use of this report for promotional or advertising purposes is permitted without prior written VOC approval.



: ORDER PLACED FOR CLIENT: Texaco Environmental Services 9705553 :
: VOC ANALYTICAL : GLEN LAB : 10:51:32 06 JUN 1997 - P. 1 :
=====

SAMPLES...	SAMPLE DESCRIPTION..	DETERM.....	DATE.....	METHOD.....	EQUIP.	BATCH..	ID.NO
			ANALYZED				
9705553*1	MW-1	GAS.MTBE.TESNC	06.03.97	8015M.TX	536-44	9711022	6843
9705553*2	MW-B	GAS.MTBE.TESNC	06.04.97	8015M.TX	536-44	9711023	8866
9705553*3	MW-5	GAS.MTBE.TESNC	06.04.97	8015M.TX	536-44	9711023	6843
9705553*4	MW-8	GAS.MTBE.TESNC	06.03.97	8015M.TX	536-44	9711022	6843
9705553*5	EB	GAS.MTBE.TESNC	06.04.97	8015M.TX	536-44	9711023	6843

Notes: Equipment = VOC Analytical identification number for a particular piece of analytical equipment.

ID.NO = VOC Analytical employee identification number of analyst.

AQUEOUS SAMPLES	----- METHOD BLANK -----			----- LAB CONTROL -----							----- MATRIX QC -----								
	UNITS	RESULT	RDL FLG	LCS %REC FLG	LCSD %REC FLG	LCL	UCL	RPD	RPD	UCL	FLG	MS %REC FLG	MSD %REC FLG	LCL	UCL	RPD	RPD	UCL	FLG
Batch: GAS*9711022 Method: 8015M.TX - Modified 8015																			
Benzene	ug/L	0	0.5 -	94 -	- -	76	155	-	-	-	-	91 -	91 -	70	153	1	25	-	-
Toluene	ug/L	0	0.5 -	100 -	- -	72	121	-	-	-	-	86 -	86 -	69	119	0	25	-	-
Ethylbenzene	ug/L	0	0.5 -	97 -	- -	72	115	-	-	-	-	88 -	88 -	68	116	0	25	-	-
Methyl-tert-butylether	ug/L	0	30 -	85 -	- -	62	159	-	-	-	-	92 -	90 -	80	176	2	25	-	-
Total Xylene Isomers	ug/L	0	0.5 -	100 -	- -	68	115	-	-	-	-	75 -	75 -	61	118	0	25	-	-
TPH (Gasoline Range)	ug/L	0	50 -	111 -	- -	85	120	-	-	-	-	100 -	100 -	78	124	0	25	-	-
[a,a,a-Trifluorotoluene]	Percent	99	- -	89 -	- -	85	118	-	-	-	-	90 -	93 -	85	118	-	-	-	-
Batch: GAS*9711023 Method: 8015M.TX - Modified 8015																			
Benzene	ug/L	0	0.5 -	94 -	- -	76	155	-	-	-	-	100 -	96 -	70	153	4	25	-	-
Toluene	ug/L	0	0.5 -	94 -	- -	72	121	-	-	-	-	91 -	89 -	69	119	2	25	-	-
Ethylbenzene	ug/L	0	0.5 -	94 -	- -	72	115	-	-	-	-	93 -	91 -	68	116	3	25	-	-
Methyl-tert-butylether	ug/L	5.4	30 -	89 -	- -	62	159	-	-	-	-	95 -	93 -	80	176	2	25	-	-
Total Xylene Isomers	ug/L	0	0.5 -	95 -	- -	68	115	-	-	-	-	78 -	76 -	61	118	2	25	-	-
TPH (Gasoline Range)	ug/L	0	50 -	106 -	- -	85	120	-	-	-	-	108 -	107 -	78	124	1	25	-	-
[a,a,a-Trifluorotoluene]	Percent	103	- -	91 -	- -	85	118	-	-	-	-	115 -	110 -	85	118	-	-	-	-

SURROGATE RECOVERIES :
BC ANALYTICAL : GLEN LAB : 10:52:22 06 JUN 1997 - P. 1 :

=====

METHOD	ANALYTE	BATCH	ANALYZED	REPORTED	TRUE	%REC	FLAG
3705553*1							
3015M.TXa	a,a-Trifluorotoluene	Re9711022	06/03/97	2220	2500	89	
3705553*2							
3015M.TXa	a,a-Trifluorotoluene	Re9711023	06/04/97	2520	2500	101	
3705553*3							
3015M.TXa	a,a-Trifluorotoluene	Re9711023	06/04/97	248	250	99	
3705553*4							
3015M.TXa	a,a-Trifluorotoluene	Re9711022	06/03/97	44.6	50.0	89	
3705553*5							
3015M.TXa	a,a-Trifluorotoluene	Re9711023	06/04/97	45.0	50.0	90	

697-05-553

Chain-of-Custody

Texaco Environmental Services
 108 Cutting Boulevard
 Richmond, California 94804
 Phone: (510) 236-3541
 FAX: (510) 237-7821
 Forward Results to the Attention of Rebecca Digerness
 Texaco Project Coordinator Karen Petryna

Site Name: Texaco Loc.# 618571050
 Site Address: 930 Springtown Blvd. Livermore, CA
 Contractor Project Number: 970523-L1
 Contractor Name: Blaine Tech Services, Inc.
 Address: 1680 Rogers Ave., San Jose, CA 95112
 Project Contact: Kent Brown
 Phone/FAX: (408) 573-0555 / (408) 573-7771

Laboratory: B C Analytical
 Turn Around Time: normal (10 day)
 Samplers (PRINT NAME): LAD GILCHRIST
 Sampler Signature: [Signature]
 Date Samples Collected: 5-23-97

ANALYSIS

KEP
 618571050
 FKEP97023L
 Alameda

Sample Number	Lab Sample Number	Date/Time Collected	No. of Containers	Type of Containers	Sample Matrix	Preservative	TPH gas/BTEX/MTBE	TPH Diesel	O&G/TRPH (418.1)	TPH Ex. (C8-C36+)	VOCs B240/624	P. Halocarbons B010/60	P. Aromatics B020/602	Organic Lead
MW-A		5/23 1017					X							
MW-B		1030					X							
MW-S		1008					X							
MW-B		945					X							
EB		952					X							

Comments

Relinquished by: [Signature] Date: 5/28/97 Time: 11:35
 Relinquished by: _____ Date: _____ Time: _____
 Relinquished by: _____ Date: _____ Time: _____
 Method of Shipment: _____

Received by: [Signature] Date: 5/28/97 Time: 11:35
 Received by: _____ Date: _____ Time: _____
 Received by: _____ Date: _____ Time: _____
 Lab Comments: _____

AQUEOUS SAMPLES	----- METHOD BLANK -----			----- LAB CONTROL -----								----- MATRIX QC -----							
	UNITS	RESULT	RDL FLG	LCS %REC FLG	LCSD %REC FLG	LCL	UCL	RPD	RPD	UCL	FLG	MS %REC FLG	MSD %REC FLG	LCL	UCL	RPD	RPD	UCL	FLG
Batch: GAS*9711022 Method: 8015M.TX - Modified 8015																			
Benzene	ug/L	0	0.5 -	94 -	- -	76	155	-	-	-	-	91 -	91 -	70	153	1	25	-	-
Toluene	ug/L	0	0.5 -	100 -	- -	72	121	-	-	-	-	86 -	86 -	69	119	0	25	-	-
Ethylbenzene	ug/L	0	0.5 -	97 -	- -	72	115	-	-	-	-	88 -	88 -	68	116	0	25	-	-
Methyl-tert-butylether	ug/L	0	30 -	85 -	- -	62	159	-	-	-	-	92 -	90 -	80	176	2	25	-	-
Total Xylene Isomers	ug/L	0	0.5 -	100 -	- -	68	115	-	-	-	-	75 -	75 -	61	118	0	25	-	-
TPH (Gasoline Range)	ug/L	0	50 -	111 -	- -	85	120	-	-	-	-	100 -	100 -	78	124	0	25	-	-
[a,a,a-Trifluorotoluene]	Percent	99	- -	89 -	- -	85	118	-	-	-	-	90 -	93 -	85	118	-	-	-	-
Batch: GAS*9711023 Method: 8015M.TX - Modified 8015																			
Benzene	ug/L	0	0.5 -	94 -	- -	76	155	-	-	-	-	100 -	96 -	70	153	4	25	-	-
Toluene	ug/L	0	0.5 -	94 -	- -	72	121	-	-	-	-	91 -	89 -	69	119	2	25	-	-
Ethylbenzene	ug/L	0	0.5 -	94 -	- -	72	115	-	-	-	-	93 -	91 -	68	116	3	25	-	-
Methyl-tert-butylether	ug/L	5.4	30 -	89 -	- -	62	159	-	-	-	-	95 -	93 -	80	176	2	25	-	-
Total Xylene Isomers	ug/L	0	0.5 -	95 -	- -	68	115	-	-	-	-	78 -	76 -	61	118	2	25	-	-
TPH (Gasoline Range)	ug/L	0	50 -	106 -	- -	85	120	-	-	-	-	108 -	107 -	78	124	1	25	-	-
[a,a,a-Trifluorotoluene]	Percent	103	- -	91 -	- -	85	118	-	-	-	-	115 -	110 -	85	118	-	-	-	-

697-05-553

Chain-of-Custody

Texaco Environmental Services
 108 Cutting Boulevard
 Richmond, California 94804
 Phone: (510) 236-3541
 FAX: (510) 237-7821
 Forward Results to the Attention of Rebecca Digerness
 Texaco Project Coordinator Karen Petryna

Site Name: Texaco Loc.# 618571050
 Site Address: 930 Springtown Blvd. Livermore, CA
 Contractor Project Number: 970523-L1
 Contractor Name: Blaine Tech Services, Inc.
 Address: 1680 Rogers Ave., San Jose, CA 95112
 Project Contact: Kent Brown
 Phone/FAX: (408) 573-0555 / (408) 573-7771

Laboratory: B C Analytical
 Turn Around Time: normal (10 day)
 Samplers (PRINT NAME): LAD GILCHRIST
 Sampler Signature: [Signature]
 Date Samples Collected: 5-23-97

ANALYSIS

KEP
 618571050
 FKEP97023L
 Alameda

Sample Number	Lab Sample Number	Date/Time Collected	No. of Containers	Type of Containers	Sample Matrix	Preservative	TPH gas/BTEX/MTBE	TPH Diesel	O&G/TRPH (418.1)	TPH Ex. (C8-C36+)	VOCs B240/624	P. Halocarbons B010/60	P. Aromatics B020/602	Organic Lead
MW-A		5/23 1017					X							
MW-B		1030					X							
MW-S		1008					X							
MW-B		945					X							
EB		952					X							

Comments

Relinquished by: [Signature] Date: 5/28/97 Time: 11:35
 Relinquished by: _____ Date: _____ Time: _____
 Relinquished by: _____ Date: _____ Time: _____
 Method of Shipment: _____

Received by: [Signature] Date: 5/28/97 Time: 11:35
 Received by: _____ Date: _____ Time: _____
 Received by: _____ Date: _____ Time: _____
 Lab Comments: _____

Well Gauging Data

Project Name: TEXACO, 930 Springtown, Livermore
 Project Number: 970523-27

Date: 5/23/97
 Recorded By: Leo

Well ID	TOC Elev.	DTB (ft. TOC)	Well Dia. (in.)	DTP (ft.)	DTW (ft.)	PT (ft.)	Comments
MW-A		16.44	2		11.36		
MW-B		21.32	2		9.05		
MW-1		25.36	4		11.48		
MW-2		22.55	4		9.25		
MW-3		24.52	4		10.67		
MW-4		24.95	3		10.15		
MW-5		21.35	2		12.55		
MW-8		24.10	4		13.35		

TOC = Top of casing
 DTB = Depth to bottom in feet below TOC
 DTP = Depth to product in feet below TOC
 DTW = Depth to water in feet below TOC
 PT = Product thickness in feet

TEXACO WELL MONITORING DATA SHEET

Project #: 970523-L1	Texaco ID#: 618571050
Sampler: Lad	Date: 5/23/97
Well I.D.: MW-A	Well Diameter: (2) 3 4 6 8
Total Well Depth: 16.44	Depth to Water: 11.36
Depth to Free Product:	Thickness of Free Product:
All Measurements are referenced to TOC. Meter used is Myron LpDS pH/EC Meter. All temperatures taken in degrees Fahrenheit.	

Well Diameter	Multiplier	Well Diameter	Multiplier
2"	0.17	5"	1.02
3"	0.38	6"	1.50
4"	0.66	8"	2.60
4.5"	0.83	Other	radius ² * 0.164

Purge Method: ~~S.S. Bailer~~
 Teflon Bailer
 Middleburg
 Electric Submersible
 Extraction Pump
 Other: Disposable Bailer

Sampling Method: ~~S.S. Bailer~~
 Teflon Bailer
 Extraction Port
 Other: Disposable Bailer

0.8	x	3	=	2.4	Gals.
1 Case Volume (Gals.)		Specified Volumes		Calculated Volume	

Time	Temp (°F)	pH	Cond.	Turbidity	Gals. Removed	Color/Odor
1011	61.8	7.7	1200.	>200.	1.	ODOR
1013	62.2	7.2	1300.	>200.	2.	LIGHT
1015	62.4	7.1	1400.	>200.	3.	STRAIN
Stainless Steel Bailer gets stuck in well. Had to use a disposable bailer.						

Did well dewater? Yes <input type="radio"/> No <input checked="" type="radio"/>	Gallons actually evacuated: 3,
Sampling Time: 1017	Sampling Date: 5/23/97
Sample I.D.: MW-A	Laboratory: <u>BC Analytical</u>
Analyzed for: <u>Tph-G</u> <u>BTEX</u> Tph-D	Other: <u>MTBE</u>
Equipment Blank I.D.:	Analyzed for same as primary sample

TEXACO WELL MONITORING DATA SHEET

Project #: <u>970523-L1</u>	Texaco ID#: <u>618571050</u>
Sampler: <u>Lad</u>	Date: <u>5/23/97</u>
Well I.D.: <u>MW-B</u>	Well Diameter: <u>(2)</u> 3 4 6 8 _____
Total Well Depth: <u>21.32</u>	Depth to Water: <u>9.05</u>
Depth to Free Product:	Thickness of Free Product:
All Measurements are referenced to TOC. Meter used is Myron LpDS pH/EC Meter. All temperatures taken in degrees Fahrenheit.	

Well Diameter	Multiplier	Well Diameter	Multiplier
2"	0.17	5"	1.02
3"	0.38	6"	1.50
4"	0.66	8"	2.60
4.5"	0.83	Other	radius ² * 0.164

Purge Method: S.S. Bailer <input checked="" type="checkbox"/> Teflon Bailer Middleburg Electric Submersible Extraction Pump Other: _____	Sampling Method: S.S. Bailer <input checked="" type="checkbox"/> Teflon Bailer Extraction Port Other: _____
---	--

<u>2.0</u>	x	<u>3</u>	=	<u>6.0</u>	Gals.
1 Case Volume (Gals.)		Specified Volumes		Calculated Volume	

Time	Temp (°F)	pH	Cond.	Turbidity	Gals. Removed	Color/Odor
<u>1021</u>	<u>63.4</u>	<u>7.4</u>	<u>1800</u>	<u>>200</u>	<u>2.1</u>	<u>Odor</u>
<u>1023</u>	<u>63.2</u>	<u>7.5</u>	<u>1800</u>	<u>>200</u>	<u>4.2</u>	<u>Sheen</u>
<u>1026</u>	<u>62.8</u>	<u>7.6</u>	<u>1800</u>	<u>>200</u>	<u>6.3</u>	

Did well dewater? Yes <input type="checkbox"/> No <input checked="" type="checkbox"/>	Gallons actually evacuated: <u>6.3</u>
Sampling Time: <u>1030</u>	Sampling Date: <u>5/23/97</u>
Sample I.D.: <u>MW-B</u>	Laboratory: <u>BC Analytical</u>
Analyzed for: <u>Tph-G</u> <u>BTEX</u> Tph-D Other: <u>MTBE</u>	
Equipment Blank I.D.:	Analyzed for same as primary sample

TEXACO WELL MONITORING DATA SHEET

Project #: 970523-L1	Texaco ID#: 618571050
Sampler: Lad	Date: 5/23/97
Well I.D.: MW-5	Well Diameter: (2) 3 4 6 8
Total Well Depth: 21.35	Depth to Water: 12.55
Depth to Free Product:	Thickness of Free Product:
All Measurements are referenced to TOC. Meter used is Myron LpDS pH/EC Meter. All temperatures taken in degrees Fahrenheit.	

Well Diameter	Multiplier	Well Diameter	Multiplier
2"	0.17	5"	1.02
3"	0.38	6"	1.50
4"	0.66	8"	2.60
4.5"	0.83	Other	radius ² * 0.164

Purge Method: S.S. Bailer Sampling Method: S.S. Bailer
 Teflon Bailer Teflon Bailer
 Middleburg Extraction Port
 Electric Submersible Other: _____
 Extraction Pump
 Other: _____

<u>1.4</u>	x	<u>3</u>	=	<u>4.2</u> Gals.
1 Case Volume (Gals.)		Specified Volumes		Calculated Volume

Time	Temp (°F)	pH	Cond.	Turbidity	Gals. Removed	Color/Odor
957	63.4	7.4	2000.	>200.	2.	ODOR
1000	63.4	7.2	1900.	>200.	3.	
1004	63.6	7.2	1900.	>200.	5.	

Did well dewater? Yes <input type="checkbox"/> No <input checked="" type="checkbox"/>	Gallons actually evacuated: 5
Sampling Time: 1008	Sampling Date: 5/23/97
Sample I.D.: MW-5	Laboratory: BC Analytical
Analyzed for: Tph-G <input checked="" type="checkbox"/> BTEX <input checked="" type="checkbox"/> Tph-D <input type="checkbox"/> Other: MTBE	
Equipment Blank I.D.: EBA 952	Analyzed for same as primary sample AFTER MW-5

TEXACO WELL MONITORING DATA SHEET

Project #: <u>970523-L1</u>	Texaco ID#: <u>618571050</u>
Sampler: <u>Lad</u>	Date: <u>5/23/97</u>
Well I.D.: <u>MW-8</u>	Well Diameter: 2 3 <u>(4)</u> 6 8 _____
Total Well Depth: <u>24.10</u>	Depth to Water: <u>13.35</u>
Depth to Free Product:	Thickness of Free Product:
All Measurements are referenced to TOC. Meter used is Myron LpDS pH/EC Meter. All temperatures taken in degrees Fahrenheit.	

Well Diameter	Multiplier	Well Diameter	Multiplier
2"	0.17	5"	1.02
3"	0.38	6"	1.50
4"	0.65	8"	2.60
4.5"	0.83	Other	radius ² * 0.164

Purge Method: S.S. Bailer Teflon Bailer Middleburg X Electric Submersible Extraction Pump Other: _____	Sampling Method: X S. Bailer Teflon Bailer Extraction Port Other: _____
---	---

<u>7.050</u>	x	<u>3</u>	=	<u>21</u>	Gals.
1 Case Volume (Gals.)		Specified Volumes		Calculated Volume	

Time	Temp (°F)	pH	Cond.	Turbidity	Gals. Removed	Color/Odor
<u>938</u>	<u>61.4</u>	<u>7.0</u>	<u>2000</u>	<u>>200</u>	X <u>7</u>	
<u>939</u>	<u>61.0</u>	<u>7.0</u>	<u>1800</u>	<u>>200</u>	X <u>14</u>	
<u>940</u>	<u>61.6</u>	<u>7.0</u>	<u>1800</u>	<u>177</u>	X <u>21</u>	

Did well dewater? Yes <u>No</u>	Gallons actually evacuated: X <u>21</u>
Sampling Time: <u>945</u>	Sampling Date: <u>5/23/97</u>
Sample I.D.: <u>MW-8</u>	Laboratory: <u>BC Analytical</u>
Analyzed for: <u>Tph-G</u> <u>BTEX</u> Tph-D	Other: <u>MTBE</u>
Equipment Blank I.D.:	Analyzed for same as primary sample

SOURCE RECORD BILL OF LADING
 FOR NON-HAZARDOUS PURGEWATER RECOVERED FROM
 GROUNDWATER WELLS AT TEXACO FACILITIES IN THE
 STATE OF CALIFORNIA. THE NON-HAZARDOUS PURGE-
 WATER WHICH HAS BEEN RECOVERED FROM GROUND-
 WATER WELLS IS COLLECTED BY THE CONTRACTOR,
 MADE UP INTO LOADS OF APPROPRIATE SIZE AND
 HAULED TO THE DESTINATION DESIGNATED BY TEXACO
 ENVIRONMENTAL SERVICES (TES).

Contractor: Blaine Tech Services, Inc.
 Address: 1680 Rogers Avenue
 City, State, ZIP: San Jose, CA 95112
 Phone: (408) 573-0555

is authorized by Texaco Environmental Services to recover, collect, apportion into loads, and haul the NON-HAZARDOUS WELL PURGEWATER that is drawn from wells at the Texaco facility listed below and to deliver that purgewater to an appropriate destination designated by TEXACO ENVIRONMENTAL SERVICES in either Redwood City, California or in Richmond, California. Transport routing of the Non-Hazardous Well Purgewater may be directed from one Texaco facility to the designated destination point; from one Texaco facility to the designated destination point via another Texaco facility; from a Texaco facility via the contractor's facility, or any combination thereof. The Non-Hazardous Well Purgewater is and remains the property of Texaco Environmental Services (TES).

This SOURCE RECORD BILL OF LADING was initiated to cover the recovery of Non-Hazardous Well Purgewater from wells at the Texaco facility described below:

TEXACO #: ~~624~~ 618571050
 Address: 930 SPRINGTOWN
 City, State, ZIP: LIVERMORE CA

Well I.D.	Gals.	Well I.D.	Gals.
/		/	
MW-A1		/	
↓		/	
/		/	
MW-B1	36	/	
/		/	
/		/	
/		/	
/		/	
/		/	
/		/	
/		/	

Total gals. _____ added rinse water 5

Total Gals. Recovered 41

Job #: 970523-L1
 Date: 5-23-97
 Time: 930
 Signature: [Signature]

REC'D AT: BVS
 Date: 5-23-97
 Time: 1500
 Signature: [Signature]

QUARTERLY SUMMARY REPORT
Former Texaco Service Station/Current Seven-Eleven Store
930 Springtown, Livermore, California
Alameda County
Second Quarter 1997

HISTORY OF INVESTIGATIVE AND REMEDIAL ACTIONS

Subsurface investigation was initiated in September, 1984 with the installation of two groundwater monitoring wells (MW-A and MW-B). Underground fuel storage tanks were removed in June 1985. Plume definition investigation continued through 1989. Monitoring wells MW-1 through MW-3 were installed in June 1985, MW-4 was installed in September 1985, and MW-5 and MW-6 were installed in November 1986. One soil boring was drilled and two additional monitoring wells (MW-7 and MW-8) were installed in December 1989 in order to fully define the extent of subsurface hydrocarbons. Monitoring wells MW-6 and MW-7 were destroyed in December 1995 and January 1996. A vapor extraction system operated at the site from September 1994 through October 1995.

WORK PERFORMED DURING THIS QUARTER

Ground water monitoring and sampling was performed. A work plan was submitted to conduct Risk Based Corrective Action analysis.

CHARACTERIZATION STATUS

SOIL: The extent of hydrocarbons in soil has been defined laterally.

GROUND WATER: The extent of dissolved hydrocarbons in ground water is not fully defined.

WATER WELL SURVEY

Based on the water well survey conducted at the Department of Water Resources on May 19, 1997, only one water producing wells within 1/2-mile of the site. An irrigation well is located approximately 650-feet north of the site. The predominant ground water flow direction is to the northwest.

REMEDICATION STATUS

A soil vapor extraction system previously operated (see above). The system was turned off after obtaining permission from the ACDEH.

WORK TO BE PERFORMED NEXT QUARTER

Continuation of the ground water monitoring and sampling program.

COMPANY CONTACT:

Texaco:	Karen Petryna (510) 236-9139
Property Owner:	Southland Corp., Bob Vasquez (916) 852-6880
Lead Agency:	Eva Chu (510) 567-6762 (ACDEH)

b:\QSR930.972