

RECEIVED

By Alameda County Environmental Health at 2:32 pm, May 29, 2013

Barbara Jakub
Alameda County Environmental Health
1131 Harbor Bay Parkway
Alameda, CA 94502-6577

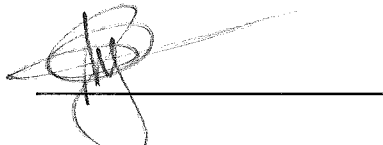
Re: BPS Reprographics (Formerly City Blue Print)
RWQCB Case #01-0210
1700 Jefferson St
Oakland CA, 94612

Dear Barbara Jakub,

BPS had directed ERS Corporation to provide, on our behalf, professional environmental consulting services to the best of their ability. To the best of my knowledge the information in this report is accurate and all local Agency and/or Regional Water Quality Control Board regulations and guidelines have been followed.

This report was prepared by ERS Corporation and BPS has relied on their advice and assistance. I declare under penalty of perjury that the foregoing is true and correct to the best of my knowledge.

Sincerely,

A handwritten signature in black ink, appearing to be "J. B.", is written over a horizontal line.

Authorized Representative

Attachment: Report

May 13, 2013

Ms. Barbara Jakub
Alameda County Department of Environmental Health-LOP
1131 Harbor Bay Parkway, Suite 250
Alameda, California 94502

RE: Addendum to Conceptual Site Model and Work Plan
1700 Jefferson Street, Oakland, California

Dear Ms. Jakub:

On behalf of ARC and based on our recent phone conversation, Environmental Risk Specialties Corporation (ERS) has prepared the enclosed Addendum to Conceptual Site Model and Work Plan for 1700 Jefferson Street, Oakland, California. This addendum proposes performing soil gas sampling in lieu of the indoor air quality sampling proposed in the Work Plan.

Elimination of Indoor Air Sampling and Addition of Soil Gas Sampling

ERS proposes eliminating indoor air quality sampling and instead collecting soil gas samples on the ARC property and near the adjacent apartment building. Soil gas samples are a better indicator of risks to indoor air quality as well as subsurface conditions. Soil gas samples will be collected by driving small-diameter steel probes 3 to 5 feet at locations shown on Figure 1. Once the probe is driven to depth, a soil gas sample will be collected using a Summa canister for analysis by EPA Method TO-17 following the DTSC Advisory for Soil Gas Investigations (April 2012).

We hope this Addendum meets your needs. Please call me at 925-938-1600 with your comments.

Regards,

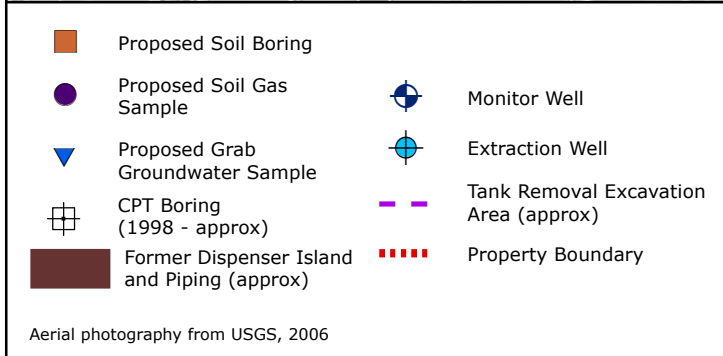
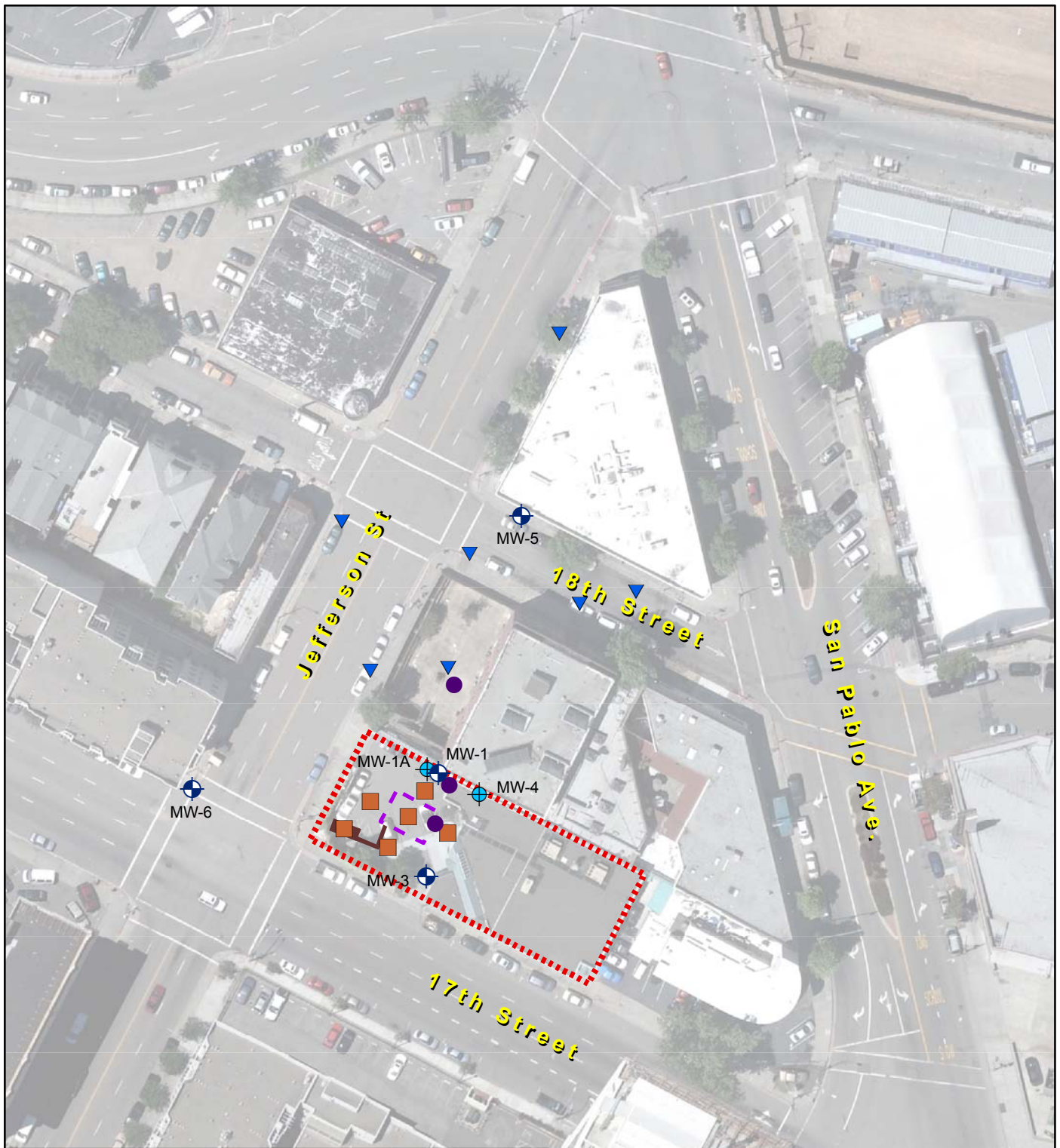


Steven Michelson, PG
Principal Geologist



Attachments

cc: Christopher Payne, ARC



Proposed Sampling Locations

1700 Jefferson Street, Oakland, CA

Figure
1
ers

Aerial photography from USGS, 2006