

Cross Section Location Map

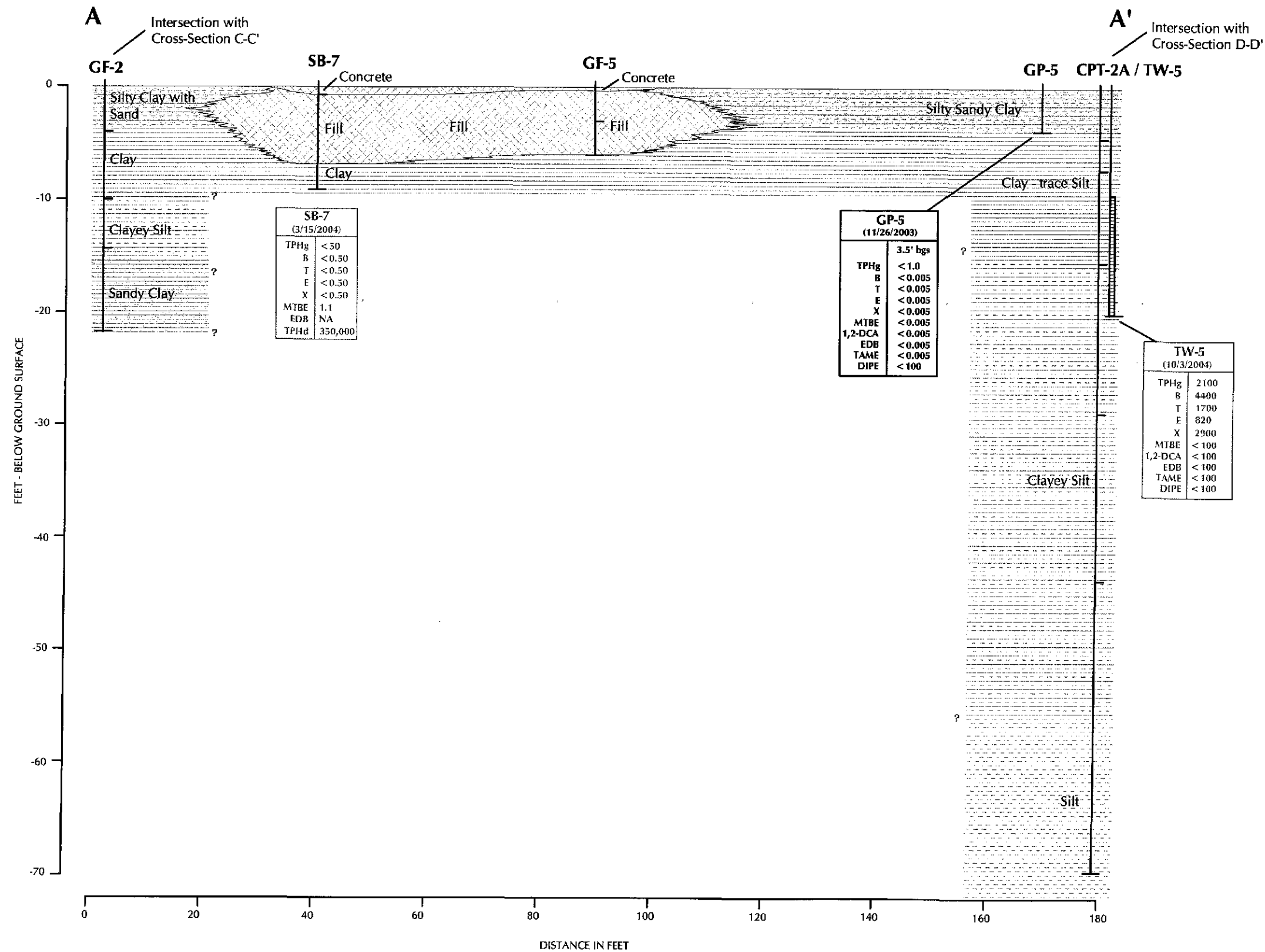
Former Cox Cadillac, 230 Bay Place, Oakland, California



Figure 3

North - Northwest

South - Southeast



EXPLANATION

- CLAY
- SILT
- SAND
- GRAVEL
- FILL MATERIAL

GP-5
 (3/15/2004) — LOCATION ID
 (3/15/2004) — DATE OF SAMPLE COLLECTION
 3.5' bgs — DEPTH OF SAMPLE
 TPHg < 1.0 — FEET BELOW GROUND SURFACE (bgs)

SOIL DATA (BLACK TEXT) REPORTED IN MILLIGRAMS PER KILOGRAM (mg/kg)

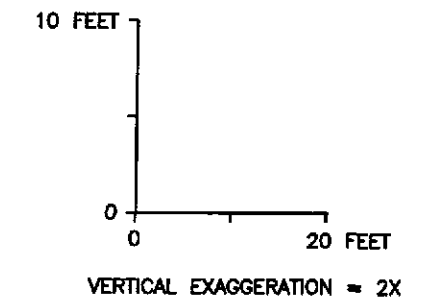
GROUNDWATER DATA (BLUE TEXT) REPORTED IN MICROGRAMS PER LITER (µg/l)

TPHd — TOTAL PETROLEUM HYDROCARBONS AS DIESEL

TPHg — TOTAL PETROLEUM HYDROCARBONS AS GASOLINE

B = BENZENE
 T = TOLUENE
 E = ETHYLBENZENE
 X = XYLENE

MTBE = METHYL TERTIARY BUTYL ETHER
 EDB = ETHYLENE DIBROMIDE
 TAME = TERTIARY AMYL METHYL ETHER
 DIPE = DI-ISOPROPYL ETHER
 1,2-DCA = 1,2-DICHLOROETHANE
 NA = NOT ANALYZED
 ND = NOT DETECTED



North/Northwest - South/Southeast
 Cross Section A-A'

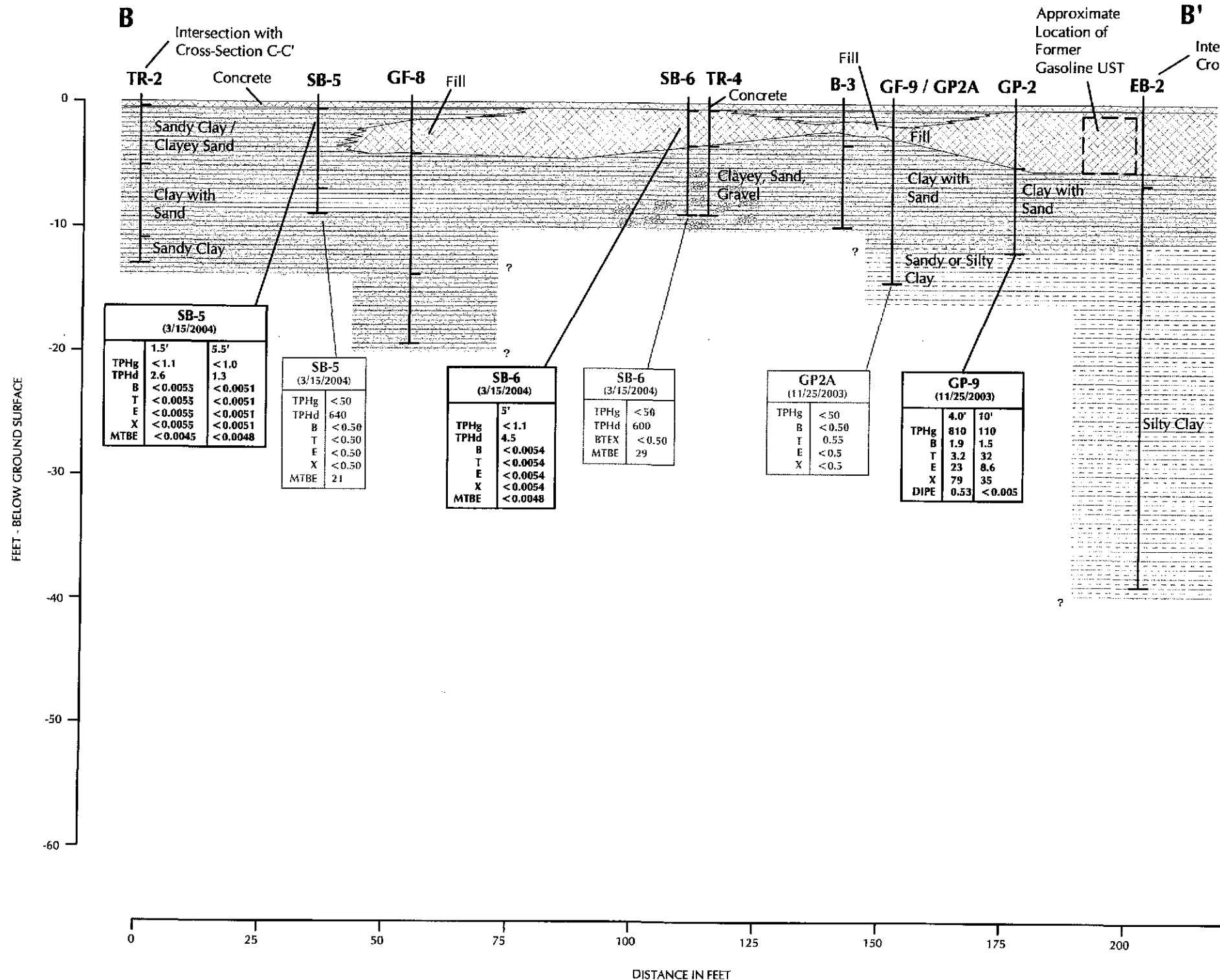
Former Cox Cadillac, 230 Bay Place, Oakland, California



Figure 4

North - Northwest

South - Southeast



EXPLANATION

- CLAY
- SILT
- SAND
- GRAVEL
- FILL MATERIAL

GP-9 (3/15/2004)

- LOCATION ID
- DATE OF SAMPLE COLLECTION
- 40' bgs — DEPTH OF SAMPLE FEET BELOW GROUND SURFACE (bgs)
- TPHg 810

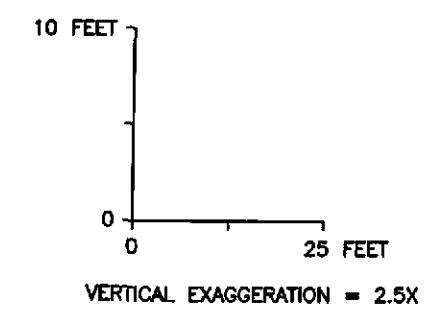
SOIL DATA (BLACK TEXT) REPORTED IN MILLIGRAMS PER KILOGRAM (mg/kg)

GROUNDWATER DATA (BLUE TEXT) REPORTED IN MICROGRAMS PER LITER (µg/l)

TPHg - TOTAL PETROLEUM HYDROCARBONS AS GASOLINE

TPHd - TOTAL PETROLEUM HYDROCARBONS AS DIESEL

B - BENZENE
T - TOLUENE
E - ETHYLBENZENE
X - XYLENE
MTBE - METHYL TERTIARY BUTYL ETHER
DIPE - DI-ISOPROPYL ETHER
ND - NOT DETECTED

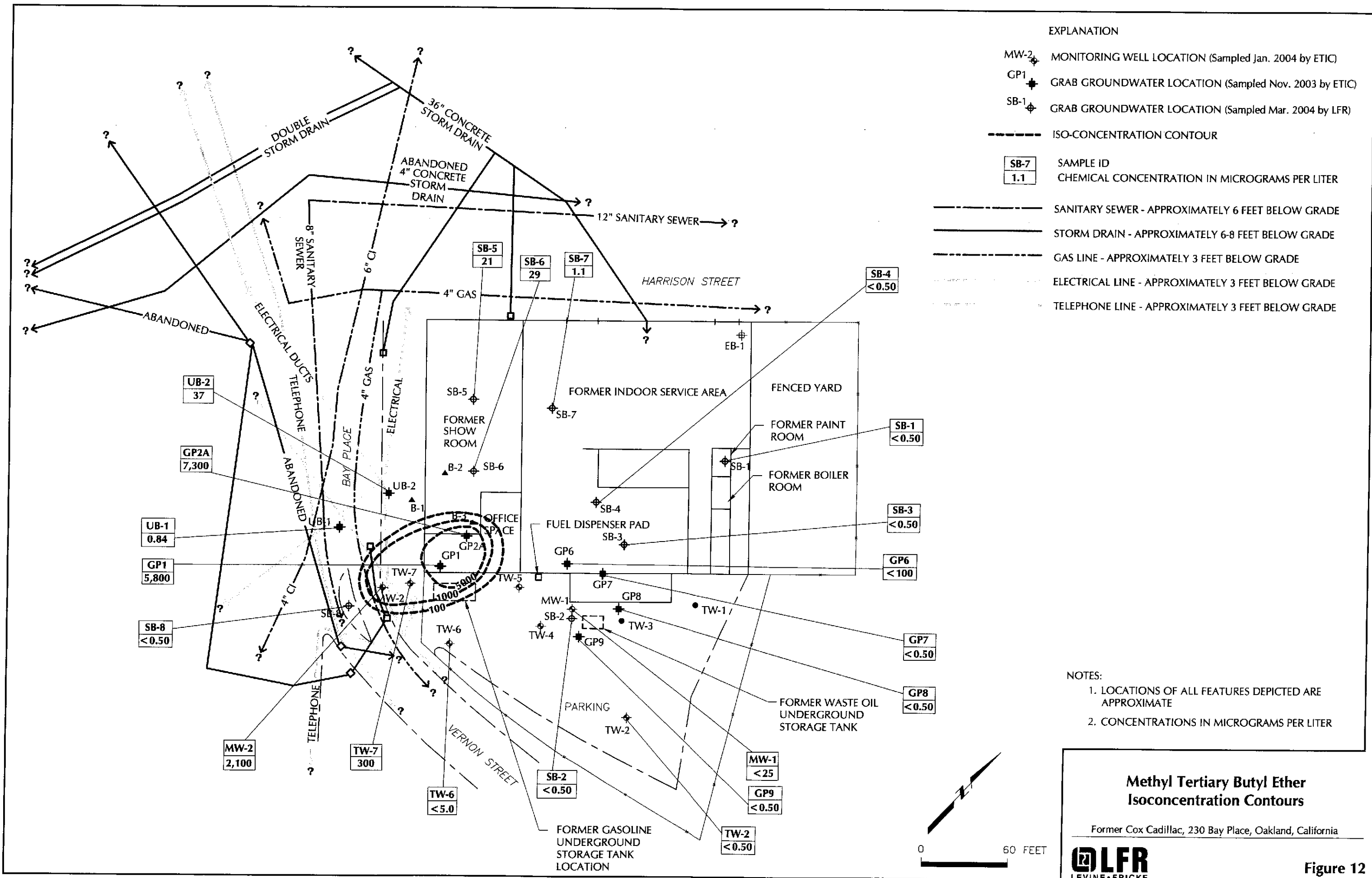


North/Northwest - South/Southeast
Cross Section B-B'

Former Cox Cadillac, 230 Bay Place, Oakland, California



Figure 5



EXPLANATION

- MW-2 MONITORING WELL LOCATION (Sampled Jan. 2004 by ETIC)
- GP1 GRAB GROUNDWATER LOCATION (Sampled Nov. 2003 by ETIC)
- SB-1 GRAB GROUNDWATER LOCATION (Sampled Mar. 2004 by LFR)

- ISO-CONCENTRATION CONTOUR
- | |
|------|
| SB-7 |
| 1.1 |

 SAMPLE ID
CHEMICAL CONCENTRATION IN MICROGRAMS PER LITER
- SANITARY SEWER - APPROXIMATELY 6 FEET BELOW GRADE
- STORM DRAIN - APPROXIMATELY 6-8 FEET BELOW GRADE
- GAS LINE - APPROXIMATELY 3 FEET BELOW GRADE
- ELECTRICAL LINE - APPROXIMATELY 3 FEET BELOW GRADE
- TELEPHONE LINE - APPROXIMATELY 3 FEET BELOW GRADE

- NOTES:
1. LOCATIONS OF ALL FEATURES DEPICTED ARE APPROXIMATE
 2. CONCENTRATIONS IN MICROGRAMS PER LITER

**Methyl Tertiary Butyl Ether
Isoconcentration Contours**

Former Cox Cadillac, 230 Bay Place, Oakland, California

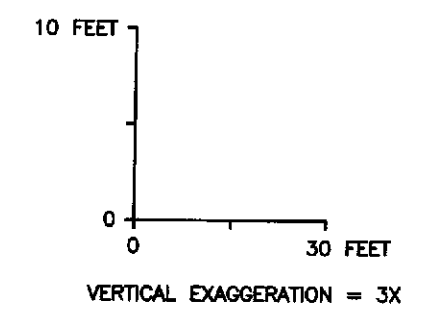
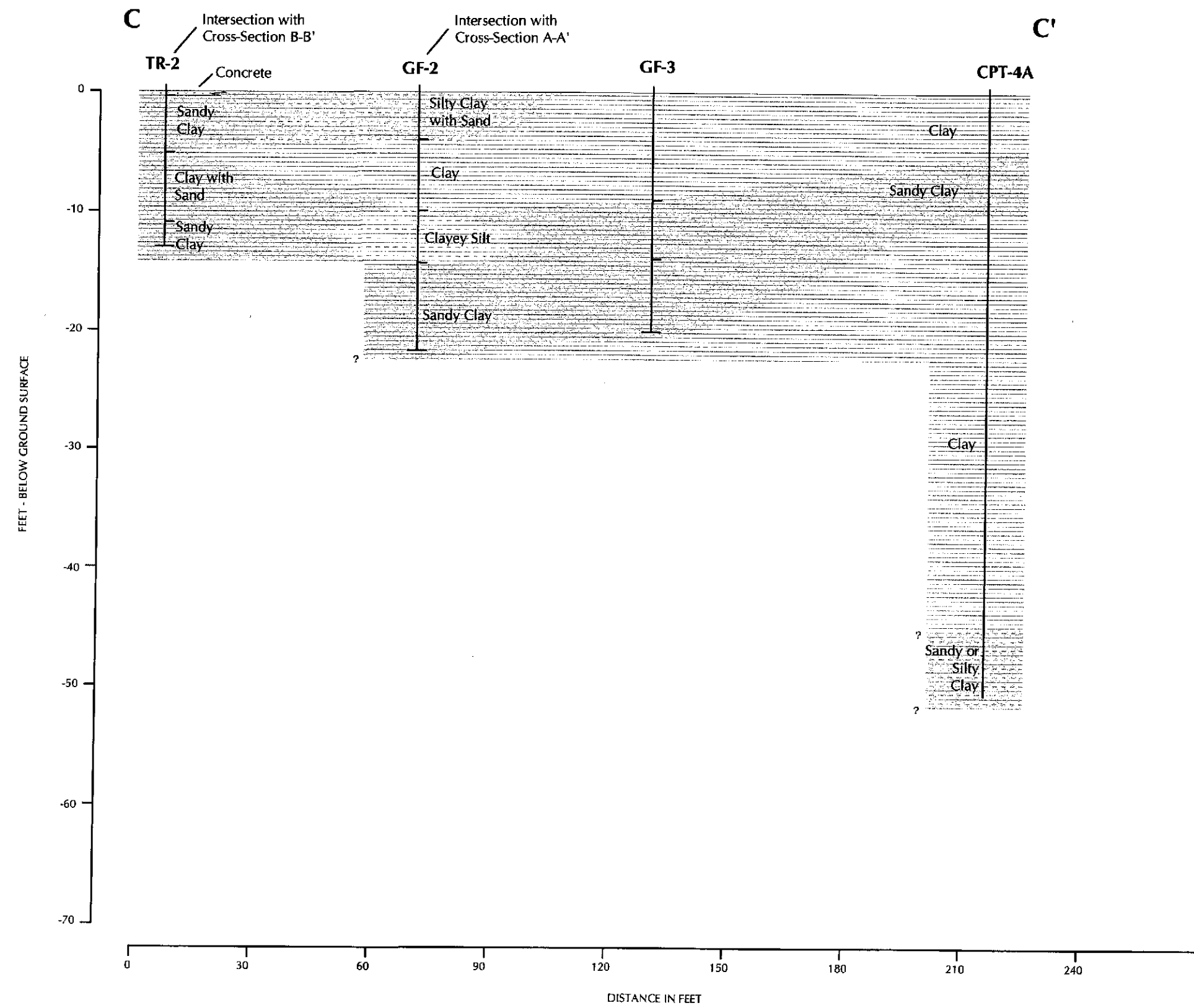


Figure 12

Southwest

Northeast

EXPLANATION	
	CLAY
	SILT
	SAND

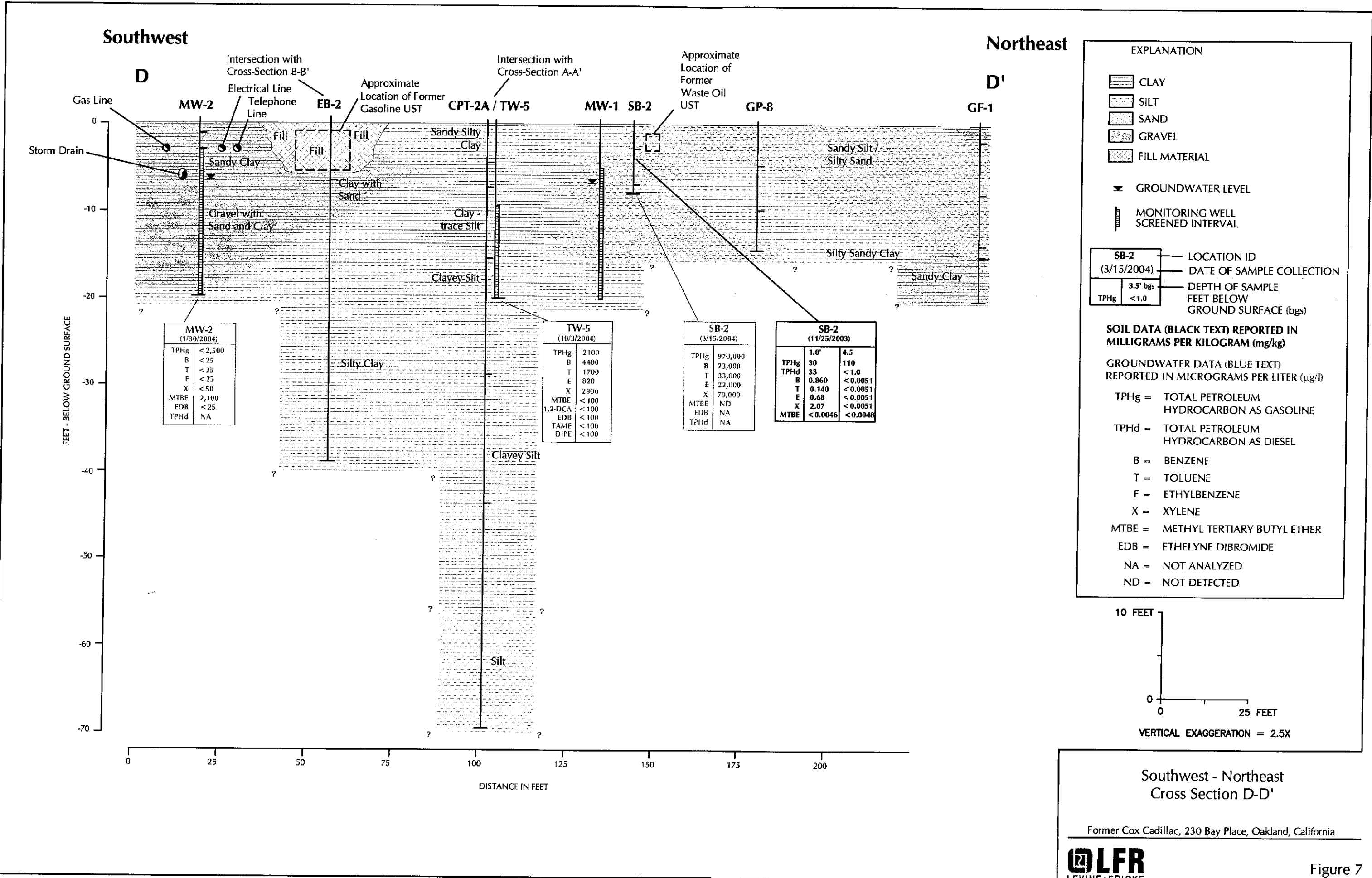


Southwest - Northeast Cross Section C-C'

Former Cox Cadillac, 230 Bay Place, Oakland, California



Figure 6

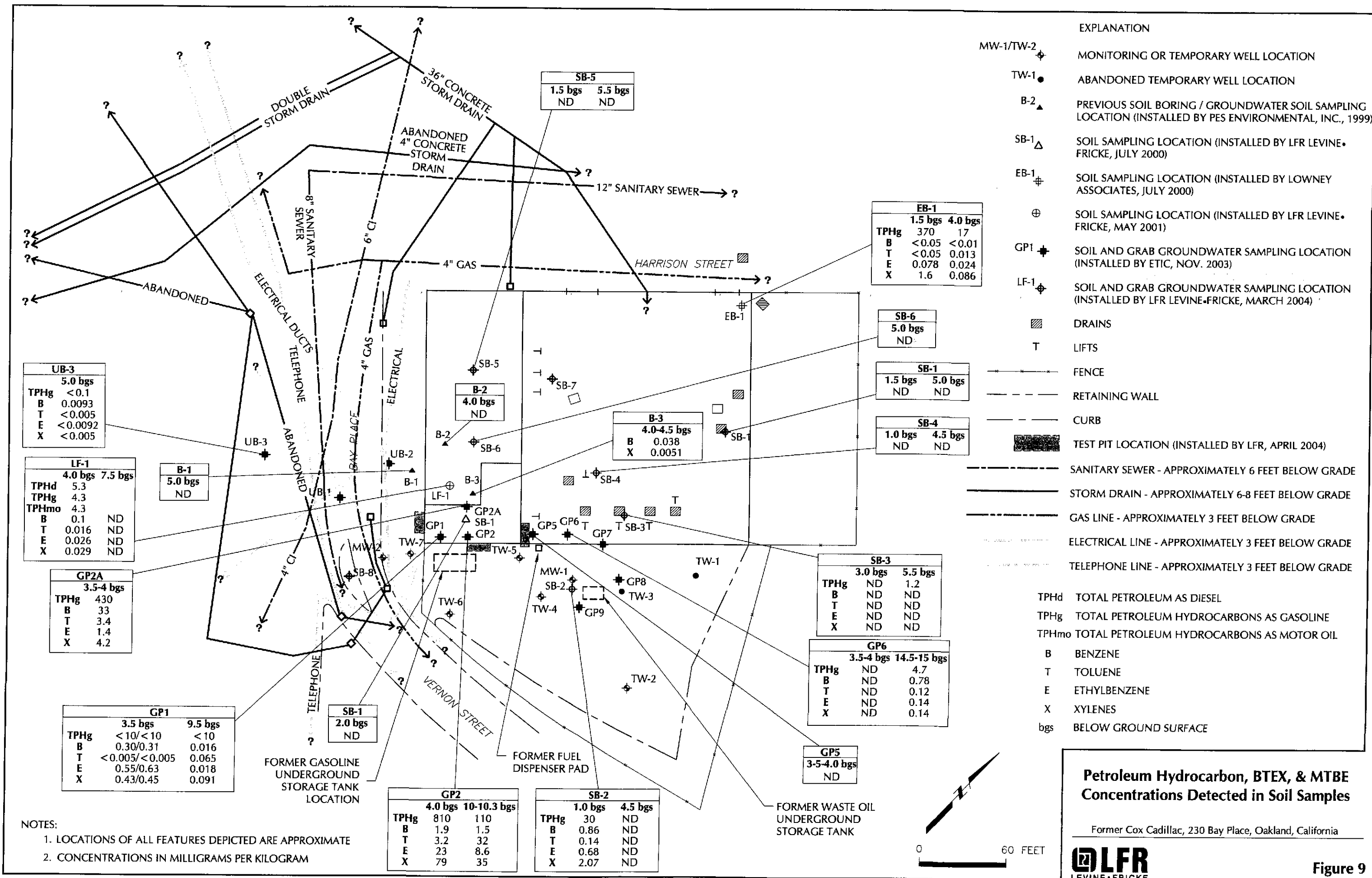


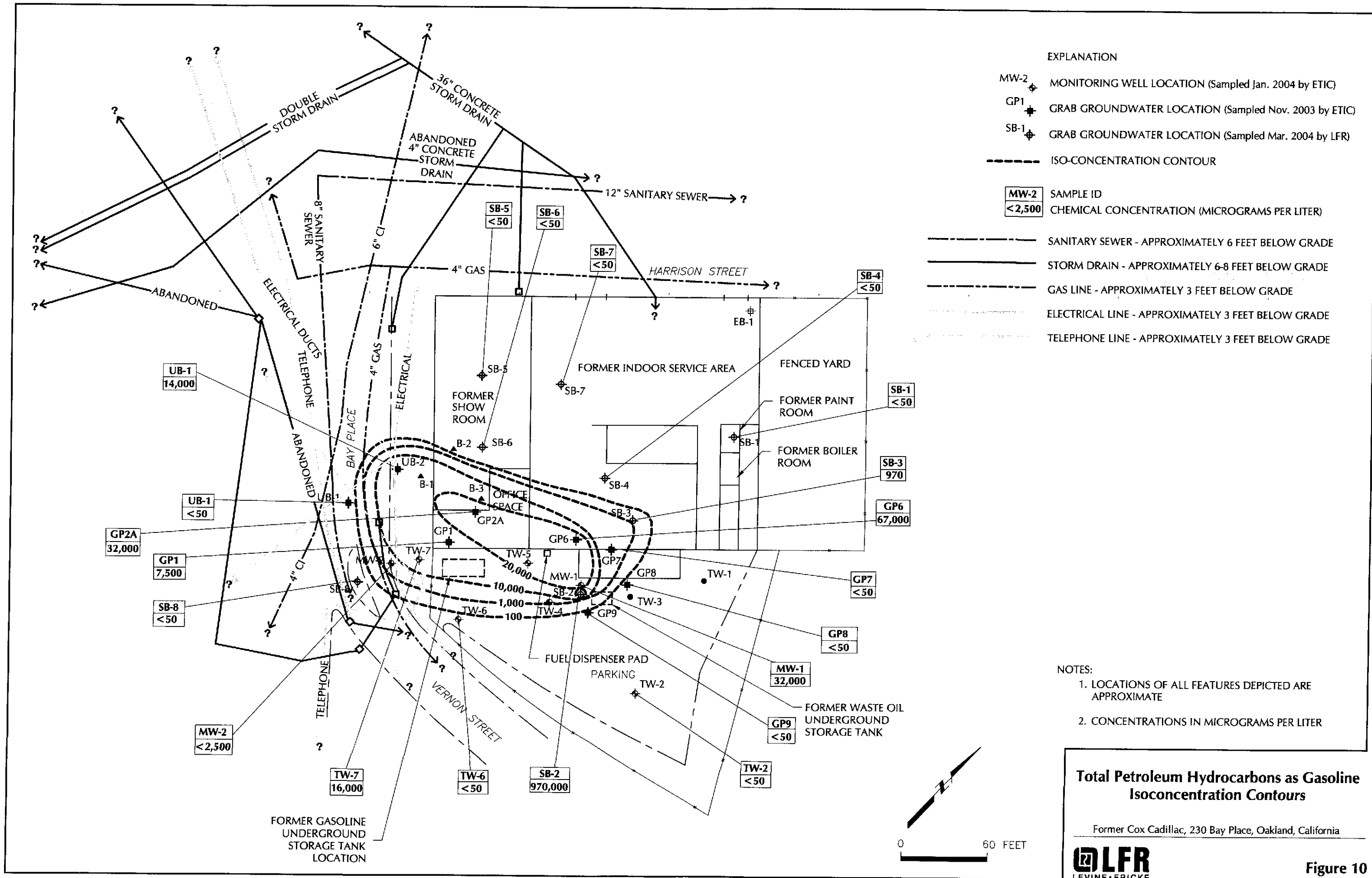
Southwest - Northeast
Cross Section D-D'

Former Cox Cadillac, 230 Bay Place, Oakland, California



Figure 7





EXPLANATION

MW-2 MONITORING WELL LOCATION (Sampled Jan. 2004 by ETIC)

GP1 GRAB GROUNDWATER LOCATION (Sampled Nov. 2003 by ETIC)

SB-1 GRAB GROUNDWATER LOCATION (Sampled Mar. 2004 by LFR)

----- ISO-CONCENTRATION CONTOUR

MW-2
<2,500

SAMPLE ID
CHEMICAL CONCENTRATION (MICROGRAMS PER LITER)

----- SANITARY SEWER - APPROXIMATELY 6 FEET BELOW GRADE

===== STORM DRAIN - APPROXIMATELY 6-8 FEET BELOW GRADE

----- GAS LINE - APPROXIMATELY 3 FEET BELOW GRADE

----- ELECTRICAL LINE - APPROXIMATELY 3 FEET BELOW GRADE

----- TELEPHONE LINE - APPROXIMATELY 3 FEET BELOW GRADE

NOTES:

1. LOCATIONS OF ALL FEATURES DEPICTED ARE APPROXIMATE
2. CONCENTRATIONS IN MICROGRAMS PER LITER

Total Petroleum Hydrocarbons as Gasoline Isoconcentration Contours

Former Cox Cadillac, 230 Bay Place, Oakland, California

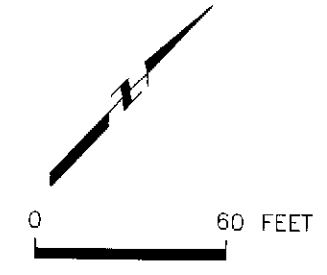
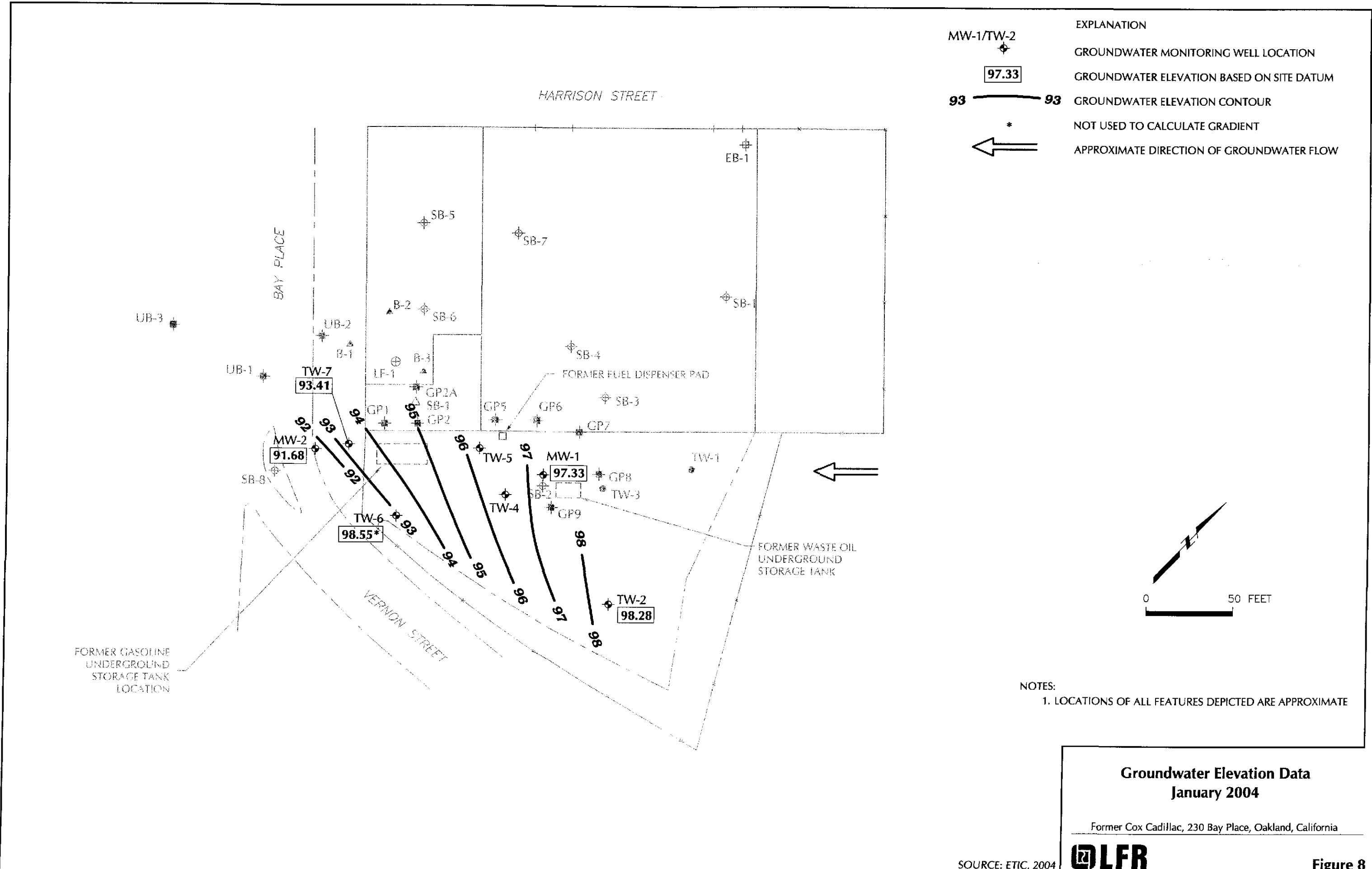
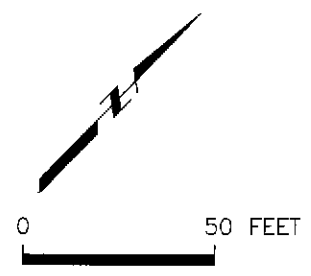


Figure 10

I:\Design\001\09171\04\000\DWG\TPH as Gas.dwg, TPH ISOconcentration Contours, 11/08/2004 10:39:07 AM



EXPLANATION	
MW-1/TW-2	GROUNDWATER MONITORING WELL LOCATION
97.33	GROUNDWATER ELEVATION BASED ON SITE DATUM
93	GROUNDWATER ELEVATION CONTOUR
*	NOT USED TO CALCULATE GRADIENT
←	APPROXIMATE DIRECTION OF GROUNDWATER FLOW



NOTES:
1. LOCATIONS OF ALL FEATURES DEPICTED ARE APPROXIMATE

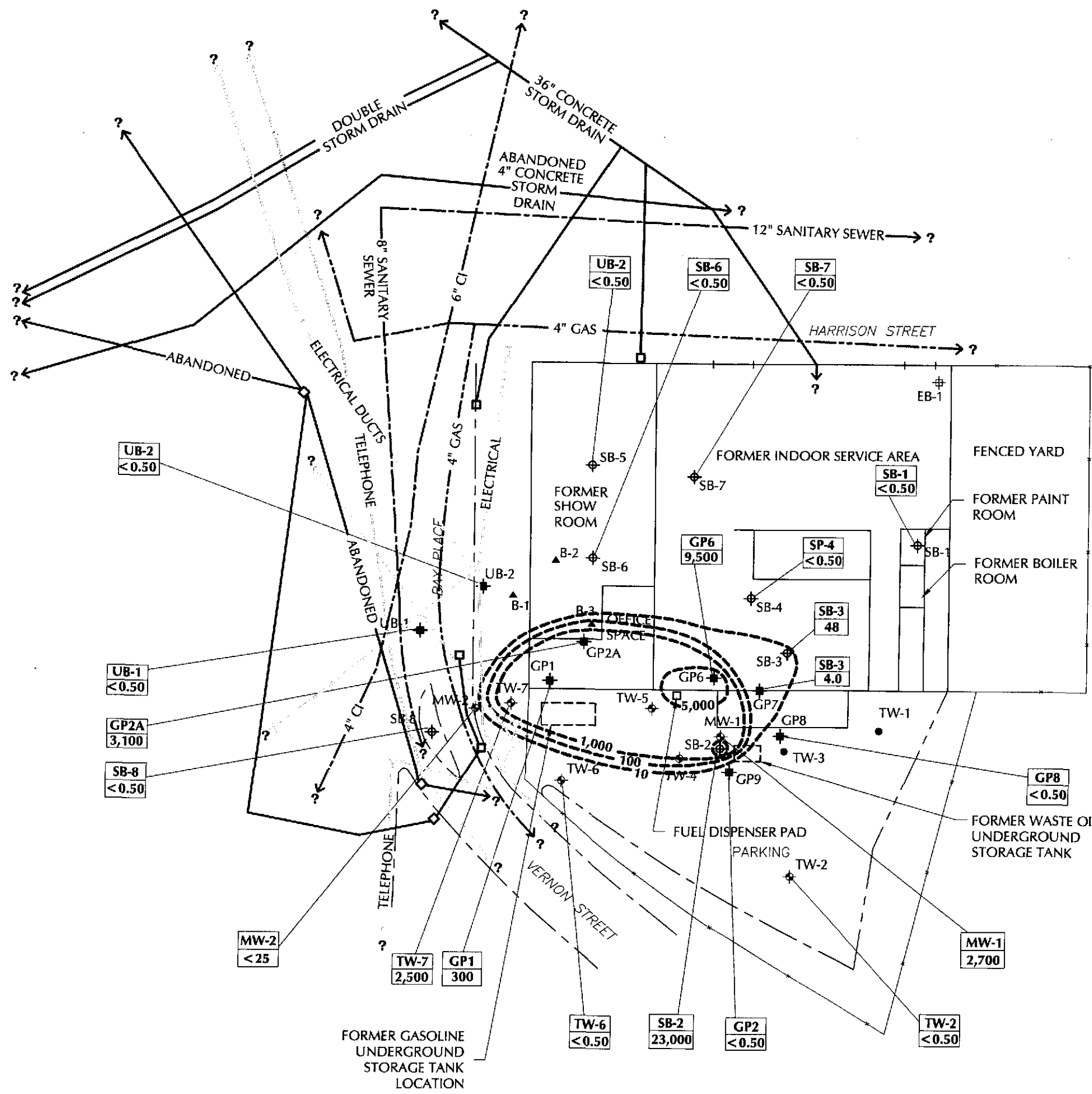
**Groundwater Elevation Data
January 2004**

Former Cox Cadillac, 230 Bay Place, Oakland, California



SOURCE: ETIC, 2004

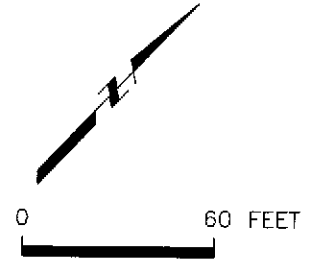
Figure 8



EXPLANATION

	MONITORING WELL LOCATION (Sampled Jan. 2004 by ETIC)
	GRAB GROUNDWATER LOCATION (Sampled Nov. 2003 by ETIC)
	GRAB GROUNDWATER LOCATION (Sampled Mar. 2004 by LFR)
	ISO-CONCENTRATION CONTOUR
	SAMPLE ID CHEMICAL CONCENTRATION IN MICROGRAMS PER LITER
	SANITARY SEWER - APPROXIMATELY 6 FEET BELOW GRADE
	STORM DRAIN - APPROXIMATELY 6-8 FEET BELOW GRADE
	GAS LINE - APPROXIMATELY 3 FEET BELOW GRADE
	ELECTRICAL LINE - APPROXIMATELY 3 FEET BELOW GRADE
	TELEPHONE LINE - APPROXIMATELY 3 FEET BELOW GRADE

- NOTES:
1. LOCATIONS OF ALL FEATURES DEPICTED ARE APPROXIMATE
 2. CONCENTRATIONS IN MICROGRAMS PER LITER



Benzene Isoconcentration Contours

Former Cox Cadillac, 230 Bay Place, Oakland, California

LFR
LEVINE • FRICKE

Figure 11