

Ms. Barbara Jakub
Alameda County Health Care Services Agency
1131 Harbor Bay Parkway
Alameda, CA 9502-6577

RECEIVED

4:13 pm, Mar 21, 2011

Alameda County
Environmental Health

Subject: Former Val Strough Chevrolet Site
327 34th Street, Oakland, CA
Site ID #3035, RO#0000134

Dear Ms. Jakub:

This enclosed report has been prepared by LRM Consulting, Inc. on behalf of the Strough Family Trust. I declare, under penalty of perjury, that the information and/or recommendations contained in the attached document or report is true and correct to the best of my knowledge.

If you have any questions, please contact Mr. Mehrdad Javaherian of LRM Consulting, Inc. at 650-343-4633.

Sincerely,



Linda L. Strough, Trustee

cc: Mehrdad Javaherian, LRM Consulting, Inc.
534 Plaza Lane, #145, Burlingame, CA 94010

Greggory Brandt, Wendel Rosen Black & Dean
1111 Broadway, 24th Floor, Oakland, CA 94607



**FOURTH QUARTER 2010
GROUNDWATER MONITORING REPORT**

Former Val Strough Chevrolet Site
327 34th Street, Oakland, California
Fuel Leak Case No. RO0000134

Prepared by
LRM Consulting, Inc.
1534 Plaza Lane, #145
Burlingame, CA 94010

March 2011

FOURTH QUARTER 2011 GROUNDWATER MONITORING REPORT

Former Val Strough Chevrolet Site
327 34th Street, Oakland, California
Fuel Leak Case No. RO0000134

Prepared by
LRM Consulting, Inc.
1534 Plaza Lane, #145
Burlingame, CA 94010



Mehrdad M. Javaherian, Ph.D(c), MPH, PE
Principal Engineer

March 2011



TABLE OF CONTENTS

1.0 INTRODUCTION.....	1
1.1 GENERAL SITE INFORMATION	1
1.2 SITE CONTACTS.....	1
2.0 SITE BACKGROUND.....	2
2.1 SITE DESCRIPTION.....	2
2.2 SUMMARY OF PREVIOUS INVESTIGATIONS AND MONITORING ACTIVITIES.....	2
2.3 SUMMARY OF INTERIM REMEDIAL ACTION ACTIVITIES	4
3.0 PROTOCOLS FOR GROUNDWATER MONITORING	6
3.1 GROUNDWATER GAUGING	6
3.2 WELL PURGING.....	6
3.3 GROUNDWATER SAMPLING.....	6
4.0 MONITORING RESULTS	7
4.1 SEPARATE-PHASE HYDROCARBON MONITORING.....	7
4.2 GROUNDWATER ELEVATION AND HYDRAULIC GRADIENT	7
4.3 GROUNDWATER ANALYTICAL RESULTS.....	7
5.0 PLANNED ACTIVITIES	9
5.1 REMEDIATION RELATED ACTIVITIES.....	9
5.2 PLANNED MONITORING ACTIVITIES.....	9
6.0 REFERENCES.....	10

List of Tables

Table 1 – Well Construction Details
Table 2a – Cumulative Groundwater Elevation and Analytical Data
Table 2b – Natural Attenuation Parameters
Table 3 – Historical Grab Groundwater Analytical Data
Table 4 – Groundwater Monitoring Schedule

List of Figures

Figure 1 – Site Location Map
Figure 2 – Groundwater Elevation Contour Map and Rose Diagram-Fourth Quarter 2010
Monitoring Event
Figure 3 – Groundwater Analytical Data

List of Appendices

Appendix A – Field Documents
Appendix B – Laboratory Analytical Reports and Chain-of-Custody Documentation



1.0 INTRODUCTION

At the request of the Strough Family Trust of 1983, LRM Consulting, Inc. (LRM) has prepared this *Fourth Quarter 2010 Groundwater Monitoring Report* for the former Val Strough Chevrolet located in Oakland, California. This report documents the procedures and findings of the December 22, 2010 groundwater monitoring event reflecting water quality reporting and water level gauging for all site wells per the existing Alameda County Health Care Services Agency (ACHCSA)-approved monitoring program for the site.

The scope of groundwater monitoring for this quarter corresponded to the ACHCSA-approved program, which for this quarter corresponds to gauging from all eleven site wells, and sampling from the select wells according to the recommended schedule. Groundwater monitoring data and well construction details are shown on the figures and presented in the tables. Groundwater monitoring protocols, field data, and laboratory analytical results are provided in the appendices.

1.1 General Site Information

Site name:	Former Val Strough Chevrolet
Site address:	327 34 th Street, Oakland, California
Current property owner:	Strough Family Trust of 1983
Current site use:	Automotive Dealership and Service Center
Current phase of project:	Groundwater monitoring and evaluation of need and approaches for additional remediation
Tanks at site:	Two former tanks (1 gasoline, 1 waste-oil) removed in 1993
Number of wells:	11 (all onsite)
Site ID #:	3035
RO #:	0000134

1.2 Site Contacts

Consultant:	Mehrdad M. Javaherian, Ph.D(c), MPH, PE Principal Engineer LRM Consulting, Inc. 1534 Plaza Lane, # 145 Burlingame, CA 94010 (415) 706-8935
--------------------	---

Regulatory agency:	Barbara Jakub, P.G. Alameda County Health Services Agency 1131 Harbor Bay Parkway, Suite 250 Alameda, CA 94502-6577 (510) 567-6746
---------------------------	--

2.0 SITE BACKGROUND

2.1 Site Description

Site Location and Land Use: The former Val Strough Chevrolet site is currently an active Honda automobile dealership and service center located on the southwestern corner of the intersection of Broadway (Auto Row) and 34th Street (Figure 1). The property is located south of Interstate 580. Land use in the area is primarily commercial.

The site is situated approximately two miles east of San Francisco Bay at approximately 61 feet above mean sea level (msl) (EDR, 2003). The land surface in the vicinity slopes toward the south. The nearest surface water body is Lake Merritt, located approximately 1 mile south of the site (Figure 1).

Site Features: The site consists of a multi-level building and an adjacent parking lot (Figure 2). The former fuel dispenser and underground storage tanks (USTs) were located in the northwestern portion of the site. Seven groundwater monitoring wells are located at the site. Construction details for the wells are presented in Table 1.

Underground Utilities: A box culvert for a former tributary of Glen Echo Creek is located approximately 17 feet below ground surface (bgs) in the eastern portion of the site (Figure 2). The culvert consists of a reinforced concrete box measuring 5 feet by 6 feet. During the winter of 1983, a section of the culvert collapsed and was replaced with a 5-foot-diameter pipeline.

Sanitary sewer, electrical, and natural gas utilities are generally present at depths less than 2 feet bgs at the site. Approximately 40 feet north of the site, along the northern edge of 34th Street, a storm sewer pipeline flows toward the east and into the box culvert. Sanitary sewer lines run parallel to both 34th Street and Broadway, north and east of the site, respectively. A lateral pipeline located along the western edge of the site connects to the sanitary sewer line below 34th Street. Natural gas service is located on the east side of the property. Water service appears to enter the site from the north.

Water Supply Well Search: A 2003 report compiled by EDR indicates that there are no federal U.S. Geological Survey wells and no public water supply wells located within a 1-mile radius of the site. No water supply wells were identified by the Alameda County Department of Public Works within a ½-mile radius of the site (ETIC, 2003).

2.2 Summary of Previous Investigations and Monitoring Activities

As presented in previous reports, the USTs were removed and multiple investigations, including the installation of seven groundwater monitoring wells, were conducted. In addition, a routine groundwater monitoring program has been in place since 1993. The following paragraphs summarize the findings of these activities.

Site Hydrogeology: In general, the site is underlain by silt and clay to depths ranging from approximately 15 to 20 feet bgs. Silty sand and fine-grained sand interbedded with thin clay intervals are encountered from approximately 20 feet bgs to the total explored depth of 35 feet bgs.

The depth to groundwater beneath the site has ranged from approximately 12.5 to 23 feet bgs. As shown in the modified rose diagram on Figure 2, the direction of groundwater flow is generally toward the southwest to south-southeast, with average hydraulic gradients ranging from approximately 0.01 to 0.03 foot/foot.

Primary Sources: Two USTs (one gasoline and one waste-oil) were located beneath the sidewalk on the northern side of the property. A fuel dispenser was located inside the building (Figure 2). These primary sources of petroleum hydrocarbons were removed from the site in 1993.

Constituents of Potential Concern: Based on the type of fuel stored in the USTs and the results of previous subsurface investigations, the constituents of potential concern (COPCs) at the site include total petroleum hydrocarbons as gasoline (TPH-g), benzene, toluene, ethylbenzene, and total xylenes (BTEX), and methyl t-butyl ether (MTBE). TPH as diesel (TPH-d) and TPH as motor oil (TPH-mo) are not routinely detected in groundwater samples and are considered secondary COPCs for the site.

Residual Source Area: Elevated concentrations of TPH-g, BTEX, and MTBE have been observed in soil in the vadose zone and upper portion of the water-bearing zone near the former USTs and fuel dispenser. Separate phase petroleum hydrocarbons (SPH) have been intermittently detected in wells MW-2 and MW-3, but none since March 2004 in MW-3 and June 2006 in MW-2. These data suggest that most of the residual petroleum hydrocarbon mass is present near the former USTs and fuel dispenser, herein referred to as the residual source area; this is corroborated by the dissolved groundwater data discussed below. Additional wells recently installed within this residual source area include MW9A/9B and O1.

Petroleum Hydrocarbon Distribution in Groundwater: The highest concentrations of petroleum hydrocarbons have been detected in samples collected from wells MW-2, MW-3, MW9A/9B, and O1, located immediately downgradient of the former USTs and within the previously defined residual source area. Significantly lower levels of petroleum hydrocarbons have been detected in samples collected from well MW-4 and the other site wells located downgradient and outside of the residual source area. The extent of dissolved-phase petroleum hydrocarbons in groundwater is largely defined by relatively low and stable TPH-g, BTEX, and MTBE concentrations detected in downgradient and cross-gradient monitoring wells MW-5, MW-6, MW-7, and MW-8 (Tables 2 and 3).

2.3 Summary of Interim Remedial Action Activities

In addition to the routine groundwater monitoring activities, remediation pilot testing and remediation activities were conducted at the site between 2004 and 2006. A summary of these activities and associated regulatory correspondence with the ACHCSA are presented below:

DPE Pilot Test: In March 2004, ETIC Engineering, Inc. (ETIC) performed a DPE pilot test at the site. As summarized in the June 2004 *Dual Phase Extraction Pilot Test and Interim Remedial Action Plan* (DPE and IRAP Report), vacuum was applied to source area wells MW-2 and MW-3 while water and vacuum levels were measured in nearby monitoring wells. The DPE pilot test induced more than 1 foot of drawdown up to 50 feet from the extraction wells and an estimated radius of vacuum influence of 55 to 70 feet. Based on vapor flow rates and petroleum hydrocarbon concentrations in the vapor stream during the short-term pilot test, removal rates of approximately 90 pounds of petroleum hydrocarbons per day were estimated.

June 2004 DPE and IRAP Report: The DPE and interim remedial action plan (IRAP) Report (ETIC, 2004) described the planned reduction of residual petroleum hydrocarbon mass in the source area through temporary DPE system installation and operation and dual phase extraction from source area wells MW-2 and MW-3 to extract soil vapor and groundwater simultaneously. The system was designed to consist of a knockout vessel to be used for separation of the soil vapor and water streams. A thermal oxidizer (with propane as a supplemental fuel) was proposed for treatment of extracted vapor, and aqueous-phase granular activated carbon was proposed for treatment of extracted groundwater.

Interim Remedial Action: Between February 2005 and June 2006, ETIC operated a DPE system on site. Vacuum was applied to remove groundwater and soil vapor from up to two wells (MW-2 and/or MW-3). The system was temporarily shutdown on 30 January 2006 for conversion of vapor treatment from thermal oxidation to carbon filtration, and remained offline until 22 May 2006, when it was restarted. Because the mass removal rates by the DPE system had reached asymptotic levels and high petroleum hydrocarbon concentrations continued to exist in extraction wells MW-2 and MW-3 despite the DPE operation, the benefit of continuation of DPE in its current configuration was considered to be low and the DPE operation was ceased on 30 June 2006. ETIC subsequently dismantled the remediation system and removed the skid mounted DPE unit from the site.

August 2006 LRM Consulting, Inc. Correspondence and 11 December 2006 LRM Supplemental Source Area Investigation Work Plan: In a August 25, 2006 correspondence, LRM notified the ACHCSA of a project consultant change from ETIC to LRM. Also, based on a review of the available site data, the response of the hydrocarbon concentrations to past DPE operations, and the ACHCSA's comments on ETIC's Work Plan, LRM recommended a technical meeting with the ACHCSA to discuss the project direction. However, because of other commitments of Don Hwang and other ACHCSA staff, a technical meeting could not be scheduled. During a October 19, 2006 telephone conversation with Don Hwang, LRM

presented an approach to conduct a supplemental investigation to define the magnitude and extent of the residual source area in the vicinity of the former fuel dispenser and wells MW-2 and MW-3. Based on these discussions and as agreed by Mr. Hwang, a supplemental source area investigation work plan outlining the proposed scope of work was prepared and submitted to ACHCSA on 11 December 2006; this work plan was revised through multiple discussions with Donna Drogos of the ACHCSA and was finalized in December of 2007. The subject investigation was conducted beginning on December 12, 2007, the results of which were documented in a report to ACHCSA (LRM, 2008a).

August 2008 LRM Consulting, Inc. IRAP: In a August 25, 2008 IRAP report, LRM, in response to a request by Barbara Jakub of the ACHCSA, proposed a series of site investigation and pilot testing activities to address the residual source area at the site. These activities included: 1) soil and grab groundwater sampling to vertically characterize the extent of hydrocarbons within the residual source area previously encountered during the supplemental investigation referenced above; 2) grab groundwater sampling along the existing culvert at the site to evaluate the potential for preferential migration of hydrocarbons along the culvert backfill; 3), placement of a groundwater monitoring well (MW-8) at the downgradient site boundary to define the downgradient extent of hydrocarbons; and 4) pilot testing activities including injection and observation well installation and pilot testing protocols for implementation of in-situ oxygen curtain (iSOC) technology within the residual source area. In a letter dated December 5, 2008, the ACHCSA approved the proposed site investigation activities with select modifications listed. Additional information was also requested for the iSOC pilot testing, which were provided by LRM in its response to ACHCSA comment dated December 5, 2008. The investigation activities associated with the IRAP have been completed and reported to the ACHCSA. The ACHCSA has requested that an additional monitoring well be installed to monitor the proposed iSOC pilot testing.

July 2009 LRM Consulting, Inc. Well Installation: On July 15, 2009, wells MW9A and MW9B were installed using hollow stem augers as part of the monitoring program for the iSOC pilot testing. The well completion activity was observed by Ms. Vicky Hamlin of Alameda County Public Works and Ms. Barbara Jakub of Alameda County Environmental Health.

January 2010 LRM Consulting, Inc. IRAP Addendum: On January 13, 2010, an addendum to the IRAP was prepared by LRM Consulting, reflecting a proposed change from iSOC technology originally outlined in the IRAP. Specifically, in-situ chemical oxidation (ISCO) technology was proposed for the residual source area instead of iSOC. This recommendation was based on results of two rounds of groundwater sampling at MW9A/9B and O-1, with both rounds indicating the presence of hydrocarbons at concentrations which are too high for effective remediation using iSOC. In accordance with the approved IRAP, the January 2010 IRAP Addendum outlined an alternative methodology to more effectively remediate the observed hydrocarbon concentrations in the residual source area. The IRAP Addendum was approved by the ACHCSA in a letter dated April 22, 2010. The first of three ISCO injection events took place from August 15 through 17.

3.0 PROTOCOLS FOR GROUNDWATER MONITORING

The following sections of this report present information relevant to the methods employed during the collection of groundwater samples from site wells on December 22, 2010. The scope of work for the quarterly groundwater monitoring event at the site is listed below.

- Checking all wells for SPH.
- Gauging the depth to groundwater in all eleven site wells.
- Purging the monitoring wells prior to sampling.
- Collecting and analyzing groundwater samples from select onsite wells.
- Estimating the hydraulic gradient and general flow direction.
- Evaluating the data and preparing a written report summarizing the results of the monitoring event.

3.1 Groundwater Gauging

For this round of monitoring, groundwater gauging was performed for all eleven onsite wells. The monitoring wells were opened prior to gauging to allow the groundwater level to equilibrate with atmospheric pressure. The depth to groundwater and depth to SPH, if present, were then measured to the nearest 0.01 feet using an electronic water level meter or optical interface probe. The measurements were made from a fixed reference point at the top of the well casing.

Field data forms are presented in Appendix B.

3.2 Well Purging

Following well gauging, three well casing volumes of water were purged from wells scheduled to be sampled, and field parameters including temperature, pH, specific conductance, turbidity, dissolved oxygen (DO) and oxidation-reduction potential (ORP) were measured. Well MW3 was not purged due to the presence of free product in this well.

3.3 Groundwater Sampling

After purging, groundwater was sampled at each of the wells scheduled to be sampled using dedicated tubing and a WaTerra inertial pump, or a disposable bailer. Sample containers were sealed, labeled, stored in a cooler and transported under chain-of-custody protocol to Kiff Analytical LLC (Kiff), a state-certified analytical laboratory in Davis, California.

Groundwater analytical results and chain-of-custody documentation are presented in Appendix C.

4.0 MONITORING RESULTS

4.1 Separate-Phase Hydrocarbon Monitoring

The wells were monitored for the presence of SPH using a disposable bailer and/or interface probe. SPHs were observed at well MW3 during this event with a thickness of 0.2 foot (see Appendix B).

4.2 Groundwater Elevation and Hydraulic Gradient

The groundwater elevation contour map (Figure 2) for this monitoring event was constructed based on depth-to-groundwater measurements collected during the current sampling event. Depth-to-groundwater measurements and calculated groundwater elevations are presented in Table 2a.

On December 22, 2010, the depth to groundwater beneath the site ranged from 14.94 (MW7) to 24.80 (MW5) feet bgs (Table 2a). Correspondingly, groundwater elevations in the site wells ranged from 43.29 feet above msl in well MW1 to 44.55 feet above msl in well MW7 (Figure 2). Using the results from the fourth quarter 2010 monitoring event, the hydraulic gradient is estimated at an average of 0.010 ft/ft, with a general flow direction away from the residual source area toward the southwest (see Figure 2).

4.3 Groundwater Analytical Results

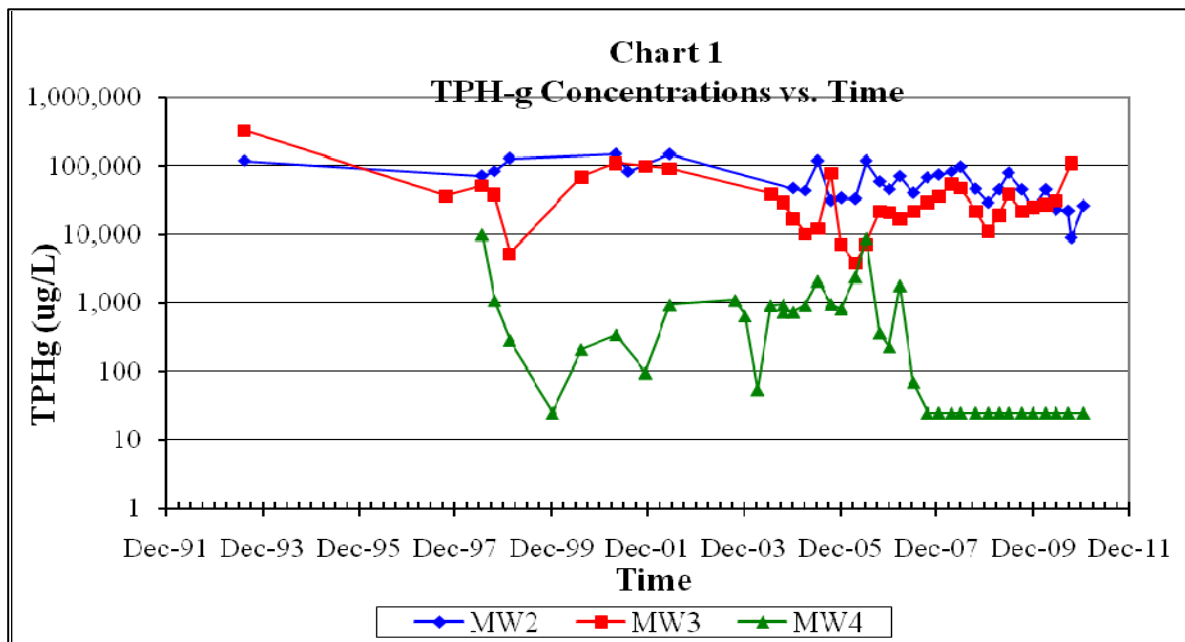
On December 22, 2010, groundwater samples were collected from wells MW2, MW4, MW9A, MW9B, and O1, and analyzed by Kiff for TPH-g, BTEX, and MTBE by EPA Method 8260B and for TPH-d and TPH-mo by modified EPA Method 8015. No sample was collected from MW3 due to the presence of SPHs.

Analytical results for this event are presented on Figure 3, and historical petroleum hydrocarbon analytical results are presented in Table 2a. Natural attenuation parameters, including field parameters such as DO, are summarized in Table 2b. Copies of the chain-of-custody and laboratory analytical reports for the groundwater samples are presented in Appendix B. Laboratory analytical results for petroleum hydrocarbons are summarized below:

- TPH-g was detected in samples collected from wells MW2, MW9A, MW9B, and O1. The maximum TPH-g concentration was detected at well MW9A (83,000 µg/L). TPH-g remained below the laboratory reporting limit of 50 µg/L in well MW4.
- Benzene was detected in the samples collected from wells MW2, , MW9A, MW9B, and O1. The maximum benzene concentration was detected at well MW9A (4,400 µg/L). Benzene was below the laboratory reporting limit of 0.5 µg/L in well MW4.

- Toluene was detected at wells MW2, , MW9A, MW9B, and O1. The maximum toluene concentration was detected at well MW9A (17,000 µg/L), but remained below the laboratory reporting limit of 0.50 µg/L in well MW4.
- Ethylbenzene was detected at wells MW2, MW9A, MW9B, and O1. The maximum ethylbenzene concentration was detected at well MW9A (1,900 µg/L), but remained below the laboratory reporting limit of 0.50 µg/L in well MW4.
- Total xylenes were detected at wells MW2, MW9A, MW9B, and O1. The maximum total xylenes concentration was detected at well MW9A (13,000 µg/L), but remained below the laboratory reporting limit of 0.50 µg/L in well MW4.
- MTBE was detected in the samples collected from all sampled wells (MW2 through MW4, MW9B, and O1). The maximum MTBE concentration was detected at well MW2 (640 µg/L).
- TPH-d was not detected in groundwater samples collected from any of the sampled wells this quarter, although reporting limits in samples from wells MW2 (<3,000 µg/L) and MW9A (<1,500 µg/L) were elevated due to interference from gasoline-range hydrocarbons (see Appendix B).
- TPH-mo remained undetected in all wells sampled this quarter.

The chart below depicts TPH-g concentration trends for wells MW-2 and MW-3 located within the residual source area, and MW-4 located immediately downgradient of this location. As indicated on the chart, the TPH-g concentration in the 4th Quarter 2010 event increased slightly from the 3rd Quarter 2010 event. Specifically, at well MW-2, TPH-g increased from 22,000 µg/L to 26,000 µg/L; this after declining to 8,000 µg/L following ISCO injection events in September 2010.



Also within the residual source area, significantly lower petroleum hydrocarbon concentrations were observed at wells MW9A MW9B and O1 during this event compared to the previous event, largely driven by the ISCO injection activities. Away from the residual source area, TPH-g levels in well MW4 remain below detection limits since 2007.

5.0 PLANNED ACTIVITIES

5.1 Remediation Related Activities

As previously discussed, to address the high concentration of petroleum hydrocarbons and within the residual source area, LRM has initiated ISCO injection activities at the site. A separate report documenting the ISCO activities has been submitted to the ACHCSA.

5.2 Planned Monitoring Activities

Quarterly monitoring per the ACHCSA-approved plan will continue, with the next round scheduled for March 2011 (Table 4).

6.0 REFERENCES

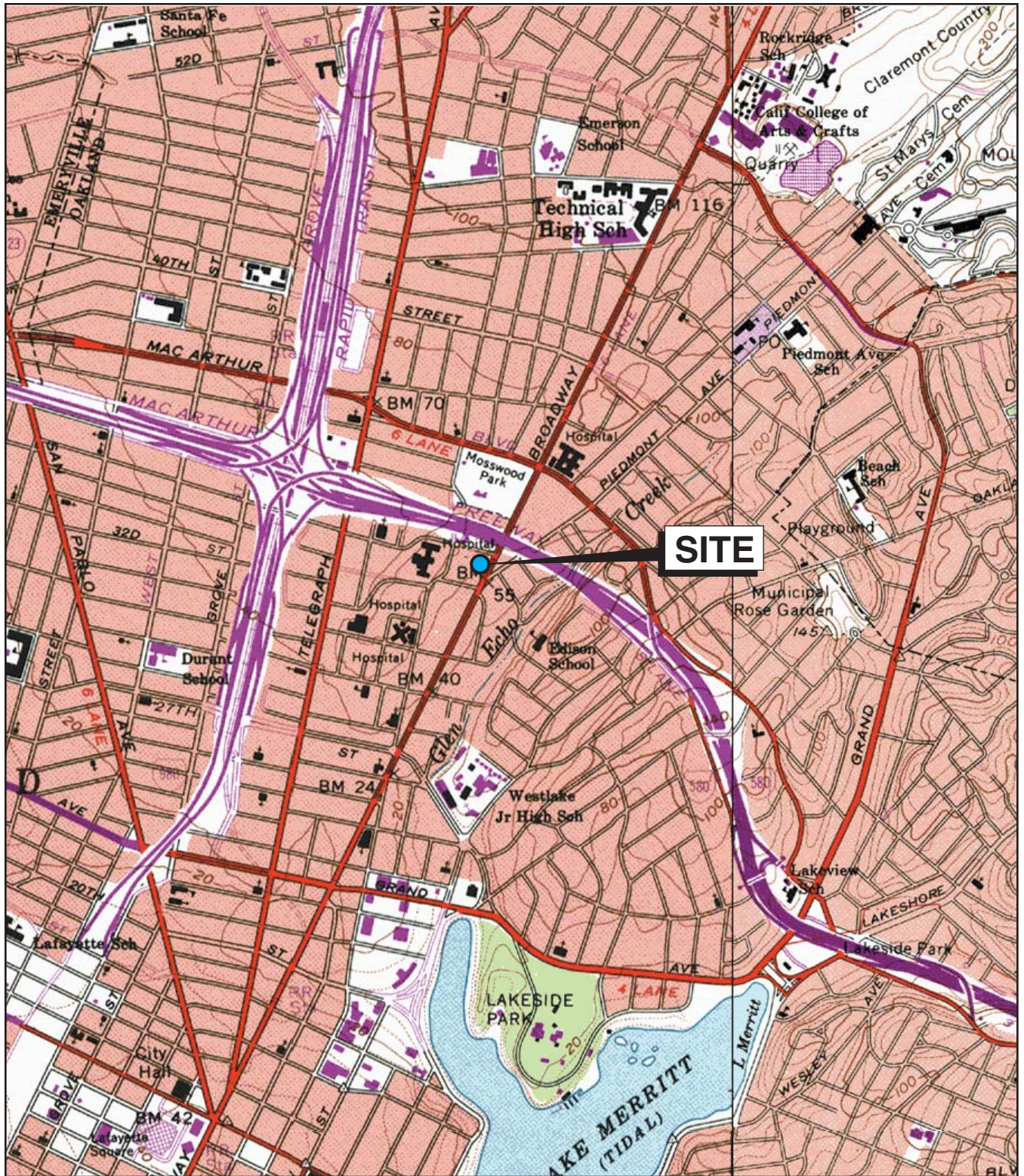
- Alameda County Health Care Services Agency. 2004. Fuel Leak Case No. RO0000134, Val Strough Chevrolet, 327-34th St., Oakland, California. August 20.
- Alameda County Health Care Services Agency. 2005. Fuel Leak Case No. RO0000134, Val Strough Chevrolet, 327-34th St., Oakland, California. February 4.
- Alameda County Health Care Services Agency. 2006. Fuel Leak Case No. RO0000134, Val Strough Chevrolet, 327-34th St., Oakland, California. July 19.
- Environmental Data Resources (EDR). 2003. EDR Radius Map with GeoCheck, Strough Family Trust, 327 34th Street, Oakland, California. September 10.
- ETIC Engineering, Inc. 2003. Supplemental Site Investigation Workplan, Fuel Case No. RO0000134, Val Strough Chevrolet, 327 34th Street, Oakland, California. September 17.
- ETIC Engineering, Inc. 2003. Third Quarter 2003 Groundwater Monitoring Report, Strough Family Trust of 1983, 327 34th Street, Oakland, California. October.
- ETIC Engineering, Inc. 2004. Supplemental Site Investigation Report and Dual-Phase Extraction Pilot Test Workplan, Strough Family Trust of 1983, 327 34th Street, Oakland, California. February.
- ETIC Engineering, Inc. 2004. First Quarter 2004 Groundwater Monitoring Report, Strough Family Trust of 1983, 327 34th Street, Oakland, California. May.
- ETIC Engineering, Inc. 2004. Dual Phase Extraction Pilot Test Report and Interim Remedial Action Plan, Strough Family Trust of 1983, Former Val Strough Chevrolet, 327 34th Street, Oakland, California. June.
- ETIC Engineering, Inc. 2004. Second Quarter 2004 Groundwater Monitoring Report, Strough Family Trust of 1983, 327 34th Street, Oakland, California. August.
- ETIC Engineering, Inc. 2004. Response to Technical Comments, Strough Family Trust of 1983, 327 34th Street, Oakland, California. October.
- ETIC Engineering, Inc. 2004. Third Quarter 2004 Groundwater Monitoring Report, Strough Family Trust of 1983, 327 34th Street, Oakland, California. October.
- ETIC Engineering, Inc. 2004. Fourth Quarter 2004 Groundwater Monitoring Report, Strough Family Trust of 1983, 327 34th Street, Oakland, California. March.
- ETIC Engineering, Inc. 2005. First Quarter 2005 Groundwater Monitoring Report, Strough

- Family Trust of 1983, 327 34th Street, Oakland, California. May.
- ETIC Engineering, Inc., 2005. Second Quarter 2005 Groundwater Monitoring Report, Strough Family Trust of 1983, 327 34th Street, Oakland, California. July.
- ETIC Engineering, Inc., 2005. Third Quarter 2005 Groundwater Monitoring Report, Strough Family Trust of 1983, 327 34th Street, Oakland, California. November.
- ETIC Engineering, Inc., 2006. Fourth Quarter 2005 Groundwater Monitoring Report, Strough Family Trust of 1983, 327 34th Street, Oakland, California. March.
- ETIC Engineering, Inc., 2006. First Quarter 2006 Groundwater Monitoring Report, Strough Family Trust of 1983, 327 34th Street, Oakland, California. June.
- LRM Consulting, Inc., 2006a. Second Quarter 2006 Groundwater Monitoring Report, Strough Family Trust of 1983, 327 34th Street, Oakland, California. August.
- LRM Consulting, Inc., 2006b. Third Quarter 2006 Groundwater Monitoring Report, Strough Family Trust of 1983, 327 34th Street, Oakland, California. December.
- LRM Consulting, Inc., 2006c. Supplemental Source Area Investigation Work Plan, Strough Family Trust of 1983, 327 34th Street, Oakland, California. December.
- LRM Consulting, Inc., 2007. Revised Addendum to Supplemental Source Area Investigation Work Plan, Strough Family Trust of 1983, 327 34th Street, Oakland, California. November 15.
- LRM Consulting, Inc., 2008a. Supplemental Source Area Investigation Report. Strough Family Trust of 1983, 327 34th Street, Oakland, California. February 29th.
- LRM Consulting, Inc., 2008b. First Quarter 2008 Groundwater Monitoring Report, Strough Family Trust of 1983, 327 34th Street, Oakland, California. March.
- LRM Consulting, Inc. 2008c. Second Quarter 2008 Groundwater Monitoring Report, Strough Family Trust of 1983, 327 34th Street, Oakland, California. June.
- LRM Consulting, Inc. 2008d. Interim Remediation Action Plan, Former Val Strough Chevrolet Site, 327 34th Street, Oakland, California. August.
- LRM Consulting, Inc. 2008e. Third Quarter 2008 Groundwater Monitoring Report, Strough Family Trust of 1983, 327 34th Street, Oakland, California. October.
- LRM Consulting, Inc. 2008f. Fourth Quarter 2008 Groundwater Monitoring Report, Strough Family Trust of 1983, 327 34th Street, Oakland, California. December.



- LRM Consulting, Inc. 2009a. First Quarter 2009 Groundwater Monitoring Report, Strough Family Trust of 1983, 327 34th Street, Oakland, California. April.
- LRM Consulting, Inc. 2009b. Second Quarter 2009 Groundwater Monitoring Report, Strough Family Trust of 1983, 327 34th Street, Oakland, California. June.
- LRM Consulting, Inc. 2009c. Third Quarter 2009 Groundwater Monitoring Report, Strough Family Trust of 1983, 327 34th Street, Oakland, California. October.
- LRM Consulting, Inc. 2009d. Fourth Quarter 2009 Groundwater Monitoring Report, Strough Family Trust of 1983, 327 34th Street, Oakland, California. January.
- LRM Consulting, Inc. 2010a. First Quarter 2010 Groundwater Monitoring Report, Strough Family Trust of 1983, 327 34th Street, Oakland, California. March.
- LRM Consulting, Inc. 2010b. Second Quarter 2010 Groundwater Monitoring Report, Strough Family Trust of 1983, 327 34th Street, Oakland, California. June.
- LRM Consulting, Inc. 2010c. Third Quarter 2010 Groundwater Monitoring Report, Strough Family Trust of 1983, 327 34th Street, Oakland, California. September.

FIGURES



Base map: Maptech Inc., 2001



0 2,000

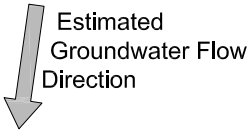
Scale (feet)



SITE LOCATION MAP
 FORMER VAL STROUGH CHEVROLET
 327 34TH STREET, OAKLAND, CALIFORNIA

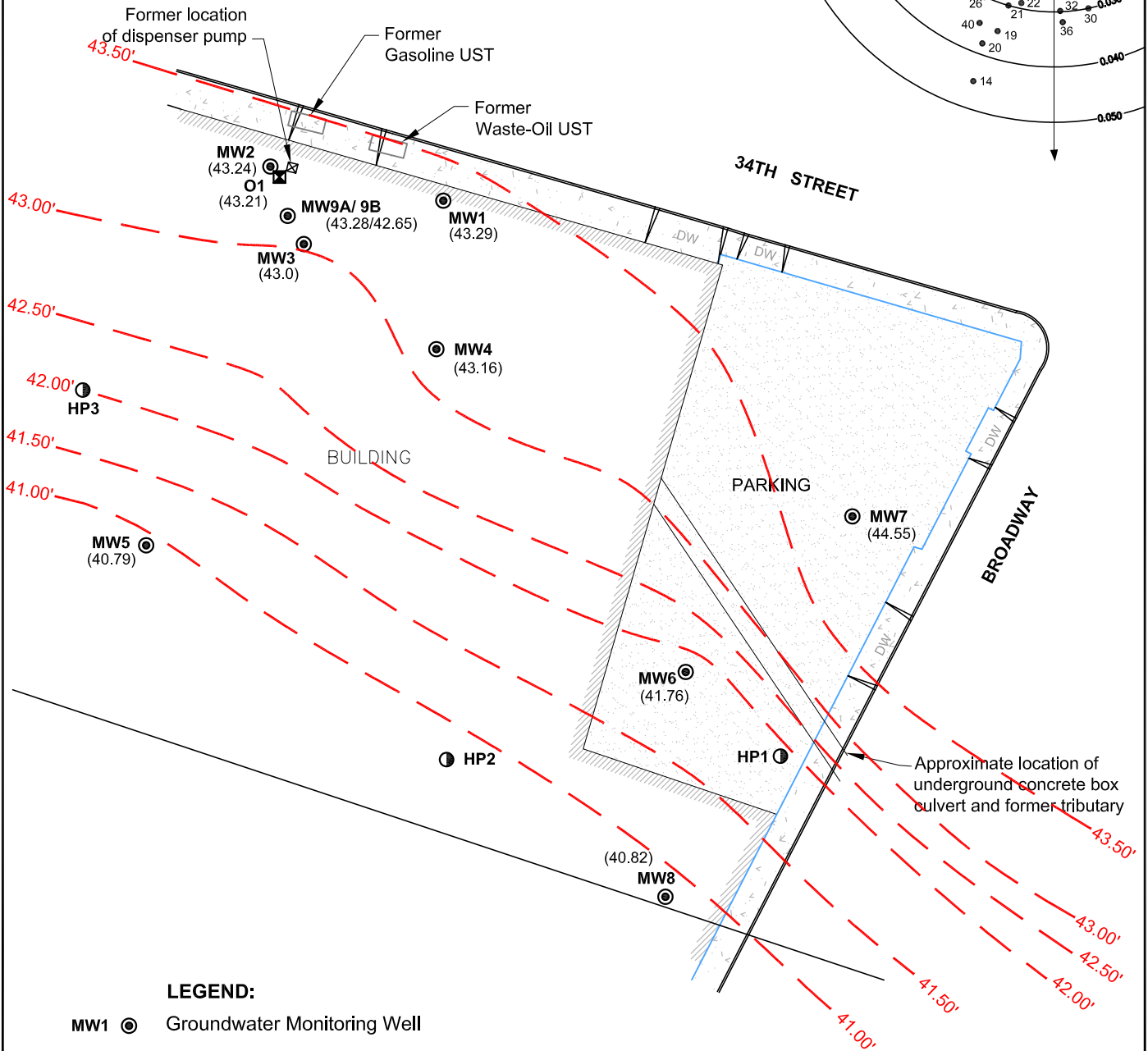
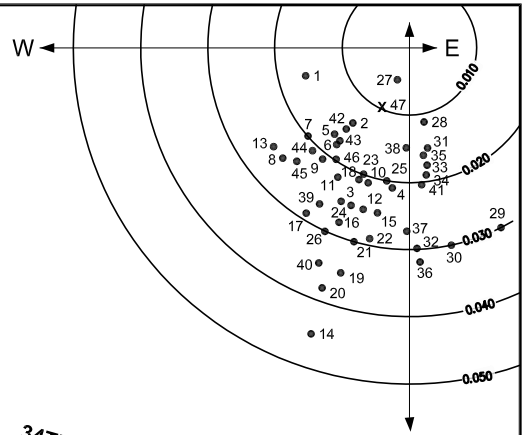
FIGURE:

1



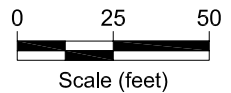
ROSE DIAGRAM

- Historical
- X This Event



LEGEND:

- MW1 ● Groundwater Monitoring Well
- HP1 ● Grab Groundwater Sampling Location
- (40.00) Groundwater Elevation (feet above mean sea level)
- 41.00' - - - Groundwater Elevation Contour (feet above mean sea level)

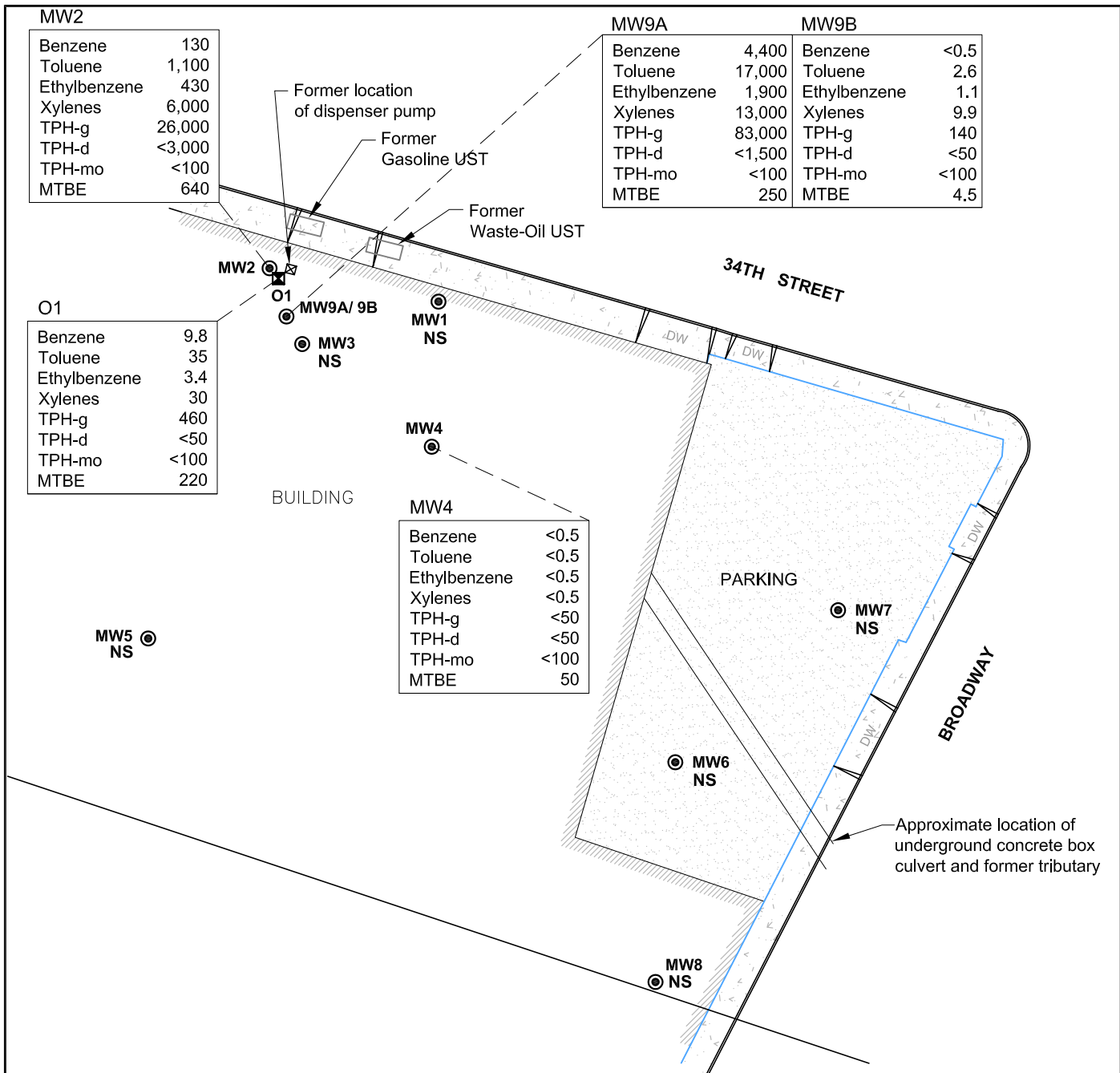


Base Map: Virgil Chavez Land Surveying, dated January 2009.



GROUNDWATER ELEVATION CONTOUR MAP AND ROSE DIAGRAM
4TH QUARTER 2010 MONITORING EVENT
 FORMER VAL STROUGH CHEVROLET
 327 34TH STREET, OAKLAND, CALIFORNIA
 FEBRUARY 2011

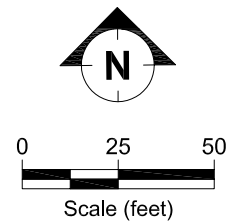
FIGURE:
2



LEGEND:

- MW1 ⊙ Groundwater monitoring well
- TPH-g Total Petroleum Hydrocarbons as gasoline
- TPH-d Total Petroleum Hydrocarbons as diesel
- TPH-mo Total Petroleum Hydrocarbons as motor oil
- MTBE Methyl Tertiary Butyl Ether
- NS Not sampled this quarter

All concentrations are reported in micrograms per liter (ug/L)



GROUNDWATER ANALYTICAL DATA
4TH QUARTER 2010 MONITORING EVENT
 FORMER VAL STROUGH CHEVROLET
 327 34TH STREET, OAKLAND, CALIFORNIA
 FEBRUARY 2011

FIGURE:

3

TABLES

TABLE 1 WELL CONSTRUCTION DETAILS
FORMER VAL STROUGH CHEVROLET, 327 34th STREET OAKLAND, CALIFORNIA

Well ID	Well Installation Date	Top-of-Casing Elevation* (feet)	Casing Material	Total Depth of Borehole (ft bgs)	Casing Diameter (inches)	Screened Interval (ft bgs)	Slot Size (inches)	Filter Pack Interval (ft bgs)	Filter Pack Material
MW1	7/19/1993	64.71	PVC	32	2	17 to 32	0.020	15 to 32	Gravel Pack
MW2	7/20/1993	65.71	PVC	33	2	18 to 33	0.020	16 to 33	Gravel Pack
MW3	7/20/1993	65.7	PVC	34	2	18 to 34	0.020	16 to 34	Gravel Pack
MW4	6/26/1998	64.37	PVC	31	2	15 to 31	0.020	13 to 31.5	Lonestar #3 Sand
MW5	6/26/1998	65.59	PVC	31	2	15 to 31	0.020	13 to 31.5	Lonestar #3 Sand
MW6	7/17/2000	59.60	PVC	31.5	2	10 to 30	0.020	8 to 30	Lonestar #3 Sand
MW7	7/17/2000	59.49	PVC	36.5	2	15 to 35	0.020	13 to 35	Lonestar #3 Sand
MW8	12/17/2008	57.07	PVC	26	1	11 to 26	0.010	9 to 26	#2/12 Sand
O1	12/12/2008	65.91	PVC	40	2	15 to 40	0.020	13 to 40	#3 Sand
MW9A	7/15/2009	65.90	PVC	25	2	15 to 25	0.020	14 to 25	#3 Monterey Sand
MW9B	7/15/2009	65.85	PVC	39	2	29 to 39	0.020	28 to 39	#3 Monterey sand

Abbreviations:

ft bgs feet below ground surface
PVC Polyvinyl chloride.

Note:

* Elevations Based on Survey Conducted in 1st Quarter 2009 relative to NAVD88 datum. Wells O1, MW9A, and MW9B were surveyed on November 12, 2009.

TABLE 2a CUMULATIVE GROUNDWATER ELEVATION AND ANALYTICAL DATA
FORMER VAL STROUGH CHEVROLET, 327 34th STREET OAKLAND, CALIFORNIA

Well Number	Date	Casing Elevation (feet)	Depth to Water (feet)	GW Elevation (feet)	SPH Thickness (feet)	Concentration (µg/L)									
						Benzene	Toluene	Ethyl-benzene	Total Xylenes	TPH-g	TPH-d	TPH-mo	MTBE	TBA	
MW1	07/27/93	100.00	a 20.79	79.21	0.00	<0.50	<0.50	<0.50	<0.50	<50	<50	--	--	--	
MW1	10/02/97	100.00	a 21.22	78.78	0.00	<0.50	<0.50	<0.50	<0.50	<50	--	--	<2.0	--	
MW1	06/30/98	100.00	a 18.21	81.79	0.00	<0.50	<0.50	2.1	0.6	84	--	--	2.1	--	
MW1	07/29/98	100.00	a 18.74	81.26	0.00	--	--	--	--	--	--	--	--	--	
MW1	08/26/98	100.00	a 19.28	80.72	0.00	--	--	--	--	--	--	--	--	--	
MW1	10/01/98	100.00	a 19.93	80.07	0.00	<1.0	<1.0	<1.0	<1.0	<50	--	--	<2.0	--	
MW1	10/30/98	100.00	a 20.22	79.78	0.00	--	--	--	--	--	--	--	--	--	
MW1	11/30/98	100.00	a 19.99	80.01	0.00	--	--	--	--	--	--	--	--	--	
MW1	12/28/98	100.00	a 19.81	80.19	0.00	--	--	--	--	--	--	--	--	--	
MW1	01/25/99	100.00	a 19.62	80.38	0.00	<1.0	<1.0	<1.0	<1.0	<50	--	--	<2.0	--	
MW1	02/26/99	100.00	a 17.18	82.82	0.00	--	--	--	--	--	--	--	--	--	
MW1	03/24/99	100.00	a 17.28	82.72	0.00	--	--	--	--	--	--	--	--	--	
MW1	05/12/99	100.00	a 17.91	82.09	0.00	--	--	--	--	--	--	--	--	--	
MW1	12/15/99	100.00	a 21.01	78.99	0.00	<0.50	<0.50	<0.50	<0.50	<50	--	--	<0.50	--	
MW1	03/20/00	100.00	a 16.25	83.75	0.00	--	--	--	--	--	--	--	--	--	
MW1	07/20/00	100.00	a 19.63	80.37	0.00	<0.50	<0.50	<0.50	<0.50	<50	<50	<300	3.4	--	
MW1	10/11/00	100.00	a 20.80	79.20	0.00	--	--	--	--	--	--	--	--	--	
MW1	04/10-11/01	100.00	a 18.81	81.19	0.00	<0.50	<0.50	<0.50	<0.50	<50	<50	<300	1.2	--	
MW1	07/10/01	100.00	a 20.51	79.49	0.00	--	--	--	--	--	--	--	--	--	
MW1	11/20/01	64.69	b 21.36	43.33	0.00	<0.50	1.3	<0.50	0.81	<50	<50	<300	<2.0	--	
MW1	02/19/02	64.69	b 18.95	45.74	0.00	--	--	--	--	--	--	--	--	--	
MW1	05/21/02	64.69	b 19.82	44.87	0.00	<0.50	<0.50	<0.50	<0.50	<50	<50	<300	<2.0	--	
MW1	06/27/03	64.69	b 19.93	44.76	0.00	--	--	--	--	--	--	--	--	--	
MW1	09/29/03	64.69	b 21.24	43.45	0.00	<0.50	<0.50	<0.50	<1.0	<50	<50	<500	<0.50	--	
MW1	12/12/03	64.69	b 21.27	43.42	0.00	<0.50	<0.50	<0.50	1.1	<50	58	<500	<0.50	--	
MW1	03/15/04	64.69	b 18.18	46.51	0.00	<0.50	<0.50	<0.50	<1.0	<50	<50	<500	<0.50	--	
MW1	06/24/04	64.69	b 20.48	44.21	0.00	<0.50	<0.50	<0.50	<1.0	<50	<50	<500	<0.50	--	
MW1	09/29/04	64.69	b 21.37	43.32	0.00	<0.50	0.51	<0.50	<1.0	<50	<50	<500	<0.50	--	
MW1	12/13/04	64.69	b 20.63	44.06	0.00	--	--	--	--	--	--	--	--	--	
MW1	03/14/05	64.69	b 18.69	46.00	0.00	<0.50	<0.50	<0.50	<1.0	<50	73	<500	<0.50	--	
MW1	06/15/05	64.69	b 20.32	44.37	0.00	--	--	--	--	--	--	--	--	--	
MW1	09/26/05	64.69	b 22.10	42.59	0.00	<0.50	<0.50	<0.50	<1.0	<50	<50	<500	<0.50	--	
MW1	12/12/05	64.69	b 22.39	42.30	0.00	--	--	--	--	--	--	--	--	--	
MW1	03/29/06	64.69	b 15.24	49.45	0.00	<0.50	<0.50	<0.50	<0.50	<50	<50	<100	74	--	
MW1	06/19/06	64.69	b 18.27	46.42	0.00	--	--	--	--	--	--	--	--	--	
MW1	09/29/06	64.69	b 20.06	44.63	0.00	<0.50	<0.50	<0.50	<0.50	<50	<50	<100	7.9	--	
MW1	12/12/06	64.69	b 20.32	44.37	0.00	<0.50	<0.50	<0.50	<0.50	<50	<50	<100	9.4	--	
MW1	03/01/07	64.69	b 18.68	46.01	0.00	<0.50	<0.50	<0.50	<0.50	<50	<50	<100	3.5	--	
MW1	06/12/07	64.69	b 20.28	44.41	0.00	--	--	--	--	--	--	--	--	--	
MW1	09/25/07	64.69	b 21.37	43.32	0.00	<0.50	<0.50	<0.50	<0.50	<50	<50	<100	1.8	--	
MW1	12/20/07	64.69	b 21.48	43.21	0.00	--	--	--	--	--	--	--	--	--	
MW1	03/26/08	64.69	b 20.98	43.71	0.00	<0.50	<0.50	<0.50	<0.50	<50	<50	<100	<0.50	--	
MW1	06/03/08	64.69	b 20.70	43.99	0.00	--	--	--	--	--	--	--	--	--	
MW1	09/25/08	64.69	b 22.30	42.39	0.00	<0.50	<0.50	<0.50	<0.50	<50	<50	<100	0.57	<5.0	
MW1	12/29/08	64.69	b 21.77	42.92	0.00	<0.50	<0.50	<0.50	<0.50	<50	<50	<100	<0.50	<5.0	
MW1	03/24/09	64.71	l 18.68	46.03	0.00	<0.50	<0.50	<0.50	<0.50	<50	<50	<100	<0.50	<5.0	
MW1	06/02/09	64.71	l 19.60	45.11	0.00	<0.50	<0.50	<0.50	<0.50	<50	<50	<100	<0.50	<5.0	
MW1	09/10/09	64.71	l 21.20	43.51	0.00	<0.50	<0.50	<0.50	<0.50	<50	<50	<100	<0.50	<5.0	
MW1	12/04/09	64.71	l 22.86	41.85	0.00	<0.50	<0.50	<0.50	<0.50	<50	<50	<100	<0.50	<5.0	

TABLE 2a CUMULATIVE GROUNDWATER ELEVATION AND ANALYTICAL DATA
 FORMER VAL STROUGH CHEVROLET, 327 34th STREET OAKLAND, CALIFORNIA

Well Number	Date	Casing Elevation (feet)	Depth to Water (feet)	GW Elevation (feet)	SPH Thickness (feet)	Concentration (µg/L)									
						Benzene	Toluene	Ethyl-benzene	Total Xylenes	TPH-g	TPH-d	TPH-mo	MTBE	TBA	
MW1	03/10/10	64.71	l 21.06	43.65	0.00	< 0.50	0.97	< 0.50	1.6	< 50	< 50	< 100	< 0.50	--	
MW1	05/28/10	64.71	l 21.19	43.52	0.00	--	--	--	--	--	--	--	--	--	
MW1	08/26/10	64.71	l 21.82	42.89	0.00	<0.50	<0.50	<0.50	<0.50	<50	<50	<100	<0.50	--	
MW1	12/22/10	64.71	l 21.42	43.29	0.00	--	--	--	--	--	--	--	--	--	
MW2	07/27/93	101.27	a 22.10	79.17	0.00	10,000	27,000	2,900	20,000	120,000	--	--	--	--	
MW2	10/02/97	101.27	a 22.91	78.36	0.43	*	*	*	*	*	*	*	*	--	
MW2	06/30/98	101.27	a 19.69	81.58	0.45	7,300	18,000	2,500	15,600	72,000	--	--	5,500	--	
MW2	07/29/98	101.27	a 20.11	81.16	0.29	--	--	--	--	--	--	--	--	--	
MW2	08/26/98	101.27	a 20.54	80.73	0.08	--	--	--	--	--	--	--	--	--	
MW2	10/01/98	101.27	a 21.52	79.75	0.42	6,400	17,000	2,600	17,000	84,000	--	--	2,000	--	
MW2	10/30/98	101.27	a 21.54	79.73	0.10	--	--	--	--	--	--	--	--	--	
MW2	11/30/98	101.27	a 21.21	80.06	0.04	--	--	--	--	--	--	--	--	--	
MW2	12/28/98	101.27	a 21.10	80.17	0.02	--	--	--	--	--	--	--	--	--	
MW2	01/25/99	101.27	a 20.80	80.47	0.01	9,000	26,000	3,800	27,500	130,000	--	--	5,800	--	
MW2	02/26/99	101.27	a 18.00	83.27	sheen	--	--	--	--	--	--	--	--	--	
MW2	03/24/99	101.27	a 18.27	83.00	trace	--	--	--	--	--	--	--	--	--	
MW2	05/12/99	101.27	a 19.08	82.19	trace	--	--	--	--	--	--	--	--	--	
MW2	12/15-16/99	101.27	a 22.42	78.85	0.025	*	*	*	*	*	*	*	*	--	
MW2	03/20/00	101.27	a 17.09	84.18	0.026	--	--	--	--	--	--	--	--	--	
MW2	07/20/00	101.27	a 20.86	80.41	0.017	*	*	*	*	*	*	*	*	--	
MW2	10/11/00	101.27	a 22.10	79.17	0.00	--	--	--	--	--	--	--	--	--	
MW2	04/10-11/01	101.27	a 19.98	81.29	0.00	8,000	22,000	2,600	23,500	150,000	1,500	<600	3,600	--	
MW2	07/10/01	101.27	a 21.85	79.42	0.00	5,900	15,000	2,300	12,100	83,000	5,700	<1,500	2,800	--	
MW2	11/20/01	65.95	b 22.75	43.20	0.00	--	--	--	--	--	--	--	--	--	
MW2	02/19/02	65.95	b 20.12	45.83	0.00	--	--	--	--	--	--	--	--	--	
MW2	05/21/02	65.95	b 21.10	44.85	0.00	8,600	25,000	3,500	26,000	150,000	31,000	<3,000	4,800	--	
MW2	06/27/03	65.95	b 21.48	44.47	0.35	--	--	--	--	--	--	--	--	--	
MW2	09/29/03	65.95	b 23.04	42.91	0.48	*	*	*	*	*	*	*	*	--	
MW2 ^e	12/12/03	65.95	b 22.75	43.31	0.16	*	*	*	*	*	*	*	*	--	
MW2 ^e	03/15/04	65.95	b 19.24	46.72	0.01	*	*	*	*	*	*	*	*	--	
MW2 ^e	06/24/04	65.95	b 22.10	44.06	0.31	*	*	*	*	*	*	*	*	--	
MW2 ^e	09/29/04	65.95	b 22.81	43.14	sheen	*	*	*	*	*	*	*	*	--	
MW2 ^e	12/13/04	65.95	b 22.06	43.95	0.08	3,700	12,000	1,900	10,000	47,000	2,600	<500	1,200	--	
MW2 ^j	03/14/05	65.95	b 25.00	40.95	0.00	780	3,700	920	6,400	43,000	43,000	<5,000	<200	--	
MW2	06/15/05	65.95	b 21.14	44.81	0.00	2,900	15,000	2,400	22,000	120,000	13,000	<2,500	810	--	
MW2	07/18/05	65.95	b NM	NC	NM	2,700	13,000	1,800	15,000	120,000	17,000	--	530	--	
MW2	09/26/05	65.95	b 22.93	43.02	0.00	570	4,000	620	6,200	31,000	63,000	28,000	<50	--	
MW2	12/12/05	65.95	b 25.40	40.55	0.00	670	5,300	1,100	9,800	34,000	2,800	<500	65	--	
MW2	03/29/06	65.95	b 15.66	50.29	sheen	620	2,800	540	4,700	33,000	<4,000	<100	37	--	
MW2	06/19/06	65.95	b 19.14	46.81	sheen	680	5,200	990	16,000	120,000	<30,000	1,900	170	--	
MW2	09/29/06	65.95	b 21.16	44.79	0.00	1,200	5,100	1,200	9,300	59,000	<8000	300	230	--	
MW2	12/12/06	65.95	b 21.46	44.49	0.00	850	4,400	1,100	8,900	45,000	<10000	360	110	--	
MW2	03/01/07	65.95	b 19.48	46.47	0.00	1,400	5,200	980	9,500	71,000	<18000	460	160	--	
MW2	06/12/07	65.95	b 20.98	44.97	0.00	1,300	4,900	1,200	8,900	40,000	<3000	<100	130	--	
MW2	09/25/07	65.95	b 22.57	43.38	0.00	1,400	6,500	1,900	13,000	68,000	<12000	250	240	--	
MW2	12/20/07	65.95	b 22.70	43.25	0.00	1,400	7,000	2,400	16,000	75,000	<5000	650	270	--	
MW2	03/26/08	65.95	b 22.51	43.44	0.00	1,400	6,200	1,800	16,000	83,000	<10000	360	480	--	
MW2	06/03/08	65.95	b 21.85	44.10	0.00	1,900	11,000	2,500	18,000	98,000	<12000	500	660	--	
MW2	09/25/08	65.95	b 23.30	42.65	0.00	740	3,500	1,700	10,000	46,000	<8000	170	340	180	

TABLE 2a CUMULATIVE GROUNDWATER ELEVATION AND ANALYTICAL DATA
 FORMER VAL STROUGH CHEVROLET, 327 34th STREET OAKLAND, CALIFORNIA

Well Number	Date	Casing Elevation (feet)	Depth to Water (feet)	GW Elevation (feet)	SPH Thickness (feet)	Concentration (µg/L)									
						Benzene	Toluene	Ethyl-benzene	Total Xylenes	TPH-g	TPH-d	TPH-mo	MTBE	TBA	
MW2	12/29/08	65.95	b	22.95	43.00	0.00	260	1,500	1,100	6,400	29,000	<4000	<100	110	<50
MW2	03/24/09	65.71	l	19.58	46.13	0.00	410	2,000	900	8,900	45,000	<8,000	420	300	210
MW2	06/02/09	65.71	l	20.50	45.21	0.00	680	3,100	1,200	10,000	80,000	<12000	480	330	180
MW2	09/10/09	65.71	l	22.40	43.31	0.00	700	3,000	1,300	9,400	45,000	< 8000	190	370	220
MW2	12/04/09	65.71	l	24.30	41.41	0.00	290	1,500	930	4,900	24,000	< 2000	170	200	92
MW2	03/10/10	65.71	l	22.20	43.51	0.00	200	1,300	700	9,500	45,000	< 6,000	< 100	340	--
MW2	05/28/10	65.71	l	22.41	43.30	0.00	260	1,100	650	4,700	23,000	< 8000	170	380	--
MW2	08/26/10	65.71	l	23.00	42.71	0.00	160	980	490	4,200	22,000	<2000	<100	180	--
MW2	09/20/10	65.71	l	NM	NC	0.00	52	360	210	1,600	8,800	--	--	--	--
MW2	12/22/10	65.71	l	22.47	43.24	0.00	130	1,100	430	6,000	26,000	<3000	<100	640	--
MW3	07/27/93	101.29	a	22.28	79.01	0.02	9,100	24,000	5,300	33,000	330,000	--	--	--	--
MW3	10/02/97	101.29	a	22.71	78.58	0.03	4,200	11,000	1,800	10,600	36,000	--	--	3,500	--
MW3	06/30/98	101.29	a	19.47	81.82	0.00	4,800	11,000	1,200	7,100	51,000	--	--	3,900	--
MW3	07/29/98	101.29	a	20.01	81.28	0.00	--	--	--	--	--	--	--	--	--
MW3	08/26/98	101.29	a	20.62	80.67	0.00	--	--	--	--	--	--	--	--	--
MW3	10/01/98	101.29	a	21.33	79.96	0.00	3,900	8,500	1,200	6,000	38,000	--	--	2,300	--
MW3	10/30/98	101.29	a	21.62	79.67	0.00	--	--	--	--	--	--	--	--	--
MW3	11/30/98	101.29	a	21.31	79.98	0.00	--	--	--	--	--	--	--	--	--
MW3	12/28/98	101.29	a	21.15	80.14	0.06	--	--	--	--	--	--	--	--	--
MW3	01/25/99	101.29	a	20.79	80.50	0.00	4,000	10,000	1200	6700	5,100	--	--	2900	--
MW3	02/26/99	101.29	a	18.02	83.27	0.00	--	--	--	--	--	--	--	--	--
MW3	03/24/99	101.29	a	18.37	82.92	0.00	--	--	--	--	--	--	--	--	--
MW3	05/12/99	101.29	a	19.22	82.07	0.0083	--	--	--	--	--	--	--	--	--
MW3	12/15-16/99	101.29	a	22.43	78.86	0.00	*	*	*	*	*	*	*	*	--
MW3	03/20/00	101.29	a	17.14	84.15	0.00	--	--	--	--	--	--	--	--	--
MW3	07/20/00	101.29	a	20.98	80.31	0.00	5,700	14,000	1,600	9,300	69,000	2,900	<300	3,300	--
MW3	10/11/00	101.29	a	22.24	79.05	0.00	--	--	--	--	--	--	--	--	--
MW3	04/10-11/01	101.29	a	20.70	80.59	0.00	7,200	<0.001	2,300	12,900	110,000	4,700	<1,500	4,300	--
MW3	07/10/01	101.29	a	21.97	79.32	0.00	--	--	--	--	--	--	--	--	--
MW3	11/20/01	65.99	b	22.80	43.19	0.00	6,300	16,000	2,400	14,900	100,000	5,900	<900	4,000	--
MW3	02/19/02	65.99	b	20.11	45.88	0.00	--	--	--	--	--	--	--	--	--
MW3	05/21/02	65.99	b	21.20	44.79	0.00	6,500	17,000	2,200	12,700	91,000	14,000	<3,000	2,200	--
MW3	06/27/03	65.99	b	21.32	44.67	sheen	--	--	--	--	--	--	--	--	--
MW3	09/29/03	65.99	b	22.79	43.20	sheen	*	*	*	*	*	*	*	*	--
MW3 ^c	12/12/03	65.99	b	22.73	43.27	0.01	*	*	*	*	*	*	*	*	--
MW3 ^c	03/15/04	65.99	b	19.32	46.67	sheen	*	*	*	*	*	*	*	*	--
MW3	06/24/04	65.99	b	21.99	44.00	0.00	3,400	7,700	1,000	4,800	39,000	1,700	<500	1,100	--
MW3	09/29/04	65.99	b	22.54	43.45	0.00	2,900	6,700	980	4,300	29,000	2,200	<500	1,100	--
MW3	12/13/04	65.99	b	22.06	43.93	0.00	1,700	2,900	790	3,400	17,000	1,300	<500	490	--
MW3 ^j	03/14/05	65.99	b	24.00	41.99	0.00	680	1,700	380	1,600	10,000	670	<500	67	--
MW3	06/15/05	65.99	b	21.13	44.86	0.00	260	960	330	1,400	12,000	1,200	<500	31	--
MW3	07/18/05	65.99	b	NM	NC	NM	1,000	5,600	1,100	4,300	23,000	1,700	--	81	--
MW3	09/26/05	65.99	b	22.92	43.07	0.00	4,000	17,000	1,900	17,000	79,000	5,100	540	270	--
MW3	12/12/05	65.99	b	23.30	42.69	0.00	200	710	450	1,400	7,000	550	<500	<10	--
MW3	03/29/06	65.99	b	15.70	50.29	0.00	110	300	130	490	3,800	<200	<100	13	--
MW3	06/19/06	65.99	b	19.11	46.88	0.00	160	500	320	840	7,000	<300	<100	3.1	--
MW3	09/29/06	65.99	b	21.15	44.84	0.00	1,300	2,300	720	2,900	22,000	<1500	<100	110	--
MW3	12/12/06	65.99	b	21.38	44.61	0.00	1,400	2,200	670	2,600	21,000	<1500	<100	130	--
MW3	03/01/07	65.99	b	19.50	46.49	0.00	1,100	2,500	510	2,200	17,000	<600	<100	51	--

TABLE 2a CUMULATIVE GROUNDWATER ELEVATION AND ANALYTICAL DATA
 FORMER VAL STROUGH CHEVROLET, 327 34th STREET OAKLAND, CALIFORNIA

Well Number	Date	Casing Elevation (feet)	Depth to Water (feet)	GW Elevation (feet)	SPH Thickness (feet)	Concentration (µg/L)									
						Benzene	Toluene	Ethyl-benzene	Total Xylenes	TPH-g	TPH-d	TPH-mo	MTBE	TBA	
MW3	06/12/07	65.99	b 21.00	44.99	0.00	1,800	4,000	800	3,300	22,000	<1500	<100	150	--	
MW3	09/25/07	65.99	b 22.59	43.40	0.00	2,400	5,000	1,000	4,600	29,000	<500	<100	220	--	
MW3	12/20/07	65.99	b 22.59	43.40	0.00	2,400	4,900	1,100	4,700	36,000	<2000	<100	240	--	
MW3	03/26/08	65.99	b 22.13	43.86	0.00	4,500	11,000	1,700	7,800	54,000	<1500	<100	340	--	
MW3	06/03/08	65.99	b 21.81	44.18	0.00	3,900	8,700	1,500	7,000	47,000	<1500	<100	470	--	
MW3	09/25/08	65.99	b 23.30	42.69	0.00	1,600	3,700	700	3,300	22,000	<3000	<100	220	180	
MW3	12/29/08	65.99	b 22.92	43.07	0.00	310	910	320	1,300	11,000	<1500	<100	35	23	
MW3	03/24/09	65.70	l 19.43	46.27	0.00	1,400	4,200	600	2,500	19,000	<1,000	<100	160	60	
MW3	06/02/09	65.70	l 20.70	45.00	0.00	2,800	7,600	1,300	5,600	39,000	<1,500	<100	240	180	
MW3	09/10/09	65.70	l 22.32	43.38	0.00	1,800	3,900	790	3,500	22,000	< 1500	< 100	190	110	
MW3	12/04/09	65.70	l 24.20	41.50	0.00	1,600	3,400	860	3,900	25,000	< 800	< 100	210	81	
MW3	03/10/10	65.70	l 22.03	43.67	0.00	420	2,400	640	3,600	27,000	< 3,000	< 100	24	--	
MW3	05/28/10	65.70	l 22.84	42.86	0.00	1,200	4,600	920	4,800	31,000	< 5000	< 100	120	--	
MW3	08/26/10	65.70	l 23.42	42.28	sheen	--	--	--	--	--	--	--	--	--	
MW3	09/20/10	65.70	l NM	NC	sheen	2700	13000	2900	18000	110000	--	--	--	--	
MW3	12/22/10	65.70	l 22.70	43.00	0.20	--	--	--	--	--	--	--	--	--	
MW4	06/30/98	98.65	a 16.93	81.72	0.00	2,200	930	850	2,100	10,000	--	--	1,800	--	
MW4	07/29/98	98.65	a 17.48	81.17	0.00	--	--	--	--	--	--	--	--	--	
MW4	08/26/98	98.65	a 18.65	80.00	0.00	--	--	--	--	--	--	--	--	--	
MW4	10/01/98	98.65	a 18.74	79.91	0.00	570	46	130	36	1,100	--	--	1,300	--	
MW4	10/30/98	98.65	a 19.02	79.63	0.00	--	--	--	--	--	--	--	--	--	
MW4	11/30/98	98.65	a 18.74	79.91	0.00	--	--	--	--	--	--	--	--	--	
MW4	12/28/98	98.65	a 18.60	80.05	0.00	--	--	--	--	--	--	--	--	--	
MW4	01/25-26/99	98.65	a 18.32	80.33	0.00	230	<8.3	<8.3	<8.3	290	--	--	1,300	--	
MW4	02/26/99	98.65	a 15.81	82.84	0.00	--	--	--	--	--	--	--	--	--	
MW4	03/24/99	98.65	a 16.01	82.64	0.00	--	--	--	--	--	--	--	--	--	
MW4	05/12/99	98.65	a 17.71	80.94	0.00	--	--	--	--	--	--	--	--	--	
MW4	12/15-16/99	98.65	a 19.83	78.82	0.00	5.8	<0.50	<0.50	<0.50	<50	--	--	1,400	--	
MW4	03/20/00	98.65	a 14.9	83.75	0.00	--	--	--	--	--	--	--	--	--	
MW4	07/20/00	98.65	a 18.38	80.27	0.00	91	4.6	19	12.9	210	<50	<300	1,500	--	
MW4	10/11/00	98.65	a 19.61	79.04	0.00	--	--	--	--	--	--	--	--	--	
MW4	04/10-11/01	98.65	a 17.55	81.10	0.00	110	<5.0	<5.0	<5.0	350	<50	<300	1,100	--	
MW4	07/10/01	98.65	a 19.34	79.31	0.00	--	--	--	--	--	--	--	--	--	
MW4	11/20/01	63.35	b 20.16	43.19	0.00	<2.5	4	<2.5	3.7	96	<50	<300	2,500	--	
MW4	02/19/02	63.35	b 17.34	46.01	0.00	--	--	--	--	--	--	--	--	--	
MW4	05/21/02	63.35	b 18.57	44.78	0.00	340	5.7	70	<1.0	940	83	<300	1,600	--	
MW4	06/27/03	63.35	b 18.72	44.63	0.00	--	--	--	--	--	--	--	--	--	
MW4	09/29/03	63.35	b 20.11	43.24	0.00	<5.0	<5.0	<5.0	<10	1,100	<50	<500	1,700	--	
MW4	12/12/03	63.35	b 20.06	43.29	0.00	<13	<13	<13	<25	<1,300	<50	<500	1,000	--	
MW4	03/15/04	63.35	b 16.89	46.46	0.00	1.5	<0.50	<0.50	<1.0	54	<50	<500	41	--	
MW4	06/24/04	63.35	b 19.31	44.04	0.00	69	<5.0	<5.0	<10	920	<50	<500	1,100	--	
MW4	09/29/04	63.35	b 20.20	43.15	0.00	<5.0	<5.0	<5.0	<10	940	<50	<500	1,200	--	
MW4	12/13/04	**	b 20.44	NC	0.00	<5.0	<5.0	<5.0	<10	740	<50	<500	860	--	
MW4	03/14/05	**	b 18.30	NC	0.00	20	<5.0	<5.0	<10	930	<50	<500	930	--	
MW4	06/15/05	**	b 20.03	NC	0.00	350	6.1	<5.0	<10	2100	89	<500	1,100	--	
MW4	07/18/05	**	b NM	NC	NM	11	<5.0	<5.0	<10	540	<50	--	1,100	--	
MW4	09/26/05	**	b 21.79	NC	0.00	<5.0	<5.0	<5.0	<10	960	<50	<500	660	--	
MW4	12/12/05	**	b 21.89	NC	0.00	<5.0	<5.0	<5.0	<10	820	<50	<500	1,000	--	
MW4	03/29/06	**	b 14.85	NC	0.00	49	160	120	300	2,400	<100	<100	130	--	

TABLE 2a CUMULATIVE GROUNDWATER ELEVATION AND ANALYTICAL DATA
 FORMER VAL STROUGH CHEVROLET, 327 34th STREET OAKLAND, CALIFORNIA

Well Number	Date	Casing Elevation (feet)	Depth to Water (feet)	GW Elevation (feet)	SPH Thickness (feet)	Concentration (µg/L)									
						Benzene	Toluene	Ethyl-benzene	Total Xylenes	TPH-g	TPH-d	TPH-mo	MTBE	TBA	
MW4	06/19/06	**	b	17.96	NC	0.00	100	940	540	1,800	8,800	<400	<100	55	--
MW4	09/29/06	63.35	b	19.85	43.50	0.00	18.0	2.6	1.5	3.5	370.0	<50	<100	180	--
MW4	12/12/06	63.35	b	20.03	43.32	0.00	11.0	0.77	<0.5	<0.5	230.0	<50	<100	260	--
MW4	03/01/07	63.35	b	18.33	45.02	0.00	63.0	7.10	40.0	190.0	1,800.0	<50	<100	130	--
MW4	06/12/07	63.35	b	19.70	43.65	0.00	9.3	<0.5	<0.5	<0.5	70.0	<50	<100	150	--
MW4	09/25/07	63.35	b	21.27	42.08	0.00	<0.5	<0.5	<0.5	<0.5	<50	<50	<100	300	--
MW4	12/20/07	63.35	b	21.30	42.05	0.00	<0.5	<0.5	<0.5	<0.5	<50	<50	<100	370	--
MW4	03/26/08	63.35	b	20.89	42.46	0.00	<0.5	<0.5	<0.5	<0.5	<50	<50	<100	260	--
MW4	06/03/08	63.35	b	20.51	42.84	0.00	<0.5	<0.5	<0.5	<0.5	<50	<50	<100	190	--
MW4	09/25/08	63.35	b	22.03	41.32	0.00	<0.5	<0.5	<0.5	<0.5	<50	<50	<100	380	<5.0
MW4	12/29/08	63.35	b	21.62	41.73	0.00	<0.5	<0.5	<0.5	<0.5	<50	<50	<100	230	<5.0
MW4	03/24/09	64.37	l	18.38	45.99	0.00	<0.5	<0.5	<0.5	<0.5	<50	<50	<100	370	<5.0
MW4	06/02/09	64.37	l	19.32	45.05	0.00	0.64	<0.5	<0.5	<0.5	<50	<50	<100	320	<5.0
MW4	09/10/09	64.37	l	21.00	43.37	0.00	< 0.50	< 0.50	< 0.50	< 0.50	< 50	< 50	< 100	280	< 5.0
MW4	12/04/09	64.37	l	22.76	41.61	0.00	< 0.50	< 0.50	< 0.50	2.9	< 50	< 50	< 100	430	< 5.0
MW4	03/10/10	64.37	l	20.87	43.50	0.00	< 0.50	< 0.50	< 0.50	< 0.50	< 50	< 50	< 100	130	--
MW4	05/28/10	64.37	l	21.07	43.30	0.00	< 0.50	< 0.50	< 0.50	< 0.50	< 50	< 50	< 100	140	--
MW4	08/26/10	64.37	l	21.71	42.66	0.00	<0.50	<0.50	<0.50	2.0	<50	<50	<100	160	--
MW4	12/02/10	64.37	l	21.21	43.16	0.00	<0.50	<0.50	<0.50	<0.50	<50	<50	<100	50	--
MW5	06/30/98	100.9	a	20.60	80.30	0.00	<0.50	<0.50	<0.50	<0.50	<50	--	--	23	--
MW5	07/29/98	100.9	a	21.52	79.38	0.00	--	--	--	--	--	--	--	--	--
MW5	08/26/98	100.9	a	22.21	78.69	0.00	--	--	--	--	--	--	--	--	--
MW5	10/01/98	100.9	a	22.95	77.95	0.00	<1.0	<1.0	<1.0	<1.0	<50	--	--	<2.0	--
MW5	10/30/98	100.9	a	23.23	77.67	0.00	--	--	--	--	--	--	--	--	--
MW5	11/30/98	100.9	a	23.12	77.78	0.00	--	--	--	--	--	--	--	--	--
MW5	12/28/98	100.9	a	23.18	77.72	0.00	--	--	--	--	--	--	--	--	--
MW5	01/25-26/99	100.9	a	22.61	78.29	0.00	<1.0	<1.0	<1.0	<1.0	<50	--	--	<2.0	--
MW5	02/26/99	100.9	a	19.78	81.12	0.00	--	--	--	--	--	--	--	--	--
MW5	03/24/99	100.9	a	20.25	80.65	0.00	--	--	--	--	--	--	--	--	--
MW5	05/12/99	100.9	a	21.06	79.84	0.00	--	--	--	--	--	--	--	--	--
MW5	12/15-16/99	100.9	a	24.19	76.71	0.00	<0.50	<0.50	<0.50	<0.50	<50	--	--	<0.50	--
MW5	03/20/00	100.9	a	19.15	81.75	0.00	--	--	--	--	--	--	--	--	--
MW5	07/20/00	100.9	a	21.84	79.06	0.00	<0.50	0.98	<0.50	<0.50	<50	<50	<300	1.9	--
MW5	10/11/00	100.9	a	23.4	77.50	0.00	--	--	--	--	--	--	--	--	--
MW5	04/10-11/01	100.9	a	22.3	78.60	0.00	<0.50	2.6	<0.50	0.6	<50	<50	<300	1.5	--
MW5	07/10/01	100.9	a	23.64	77.26	0.00	--	--	--	--	--	--	--	--	--
MW5	11/20/01	65.59	b	24.65	40.94	0.00	0.83	12	1.2	11	140	860	2,500	10	--
MW5	02/19/02	65.59	b	22.37	43.22	0.00	--	--	--	--	--	--	--	--	--
MW5	05/21/02	65.59	b	23.10	42.49	0.00	<0.50	<0.50	<0.50	<0.50	<50	2,200	<300	<2.0	--
MW5	06/27/03	65.59	b	23.07	42.52	0.00	--	--	--	--	--	--	--	--	--
MW5	09/29/03	65.59	b	24.38	41.21	0.00	<0.50	0.52	7.1	35	100	<50	<500	1.4	--
MW5	12/12/03	65.59	b	23.90	41.69	0.00	<0.50	<0.50	<0.50	<1	<50	<50	<500	1.5	--
MW5	03/15/04	65.59	b	20.82	44.77	0.00	<0.50	<0.50	<0.50	<1.0	<50	<50	<500	<0.50	--
MW5	06/24/04	65.59	b	23.57	42.02	0.00	<0.50	<0.50	<0.50	<1.0	<50	130	<500	0.79	--
MW5	09/29/04	65.59	b	24.44	41.15	0.00	--	--	--	--	--	--	--	--	--
MW5	12/13/04	65.59	b	23.87	41.72	0.00	--	--	--	--	--	--	--	--	--
MW5	03/14/05	65.59	b	20.18	45.41	0.00	<0.50	1.3	1.5	8.6	82	<50	<500	<0.50	--
MW5	06/15/05	65.59	b	12.96	52.63	0.00	--	--	--	--	--	--	--	--	--
MW5	09/26/05	65.59	b	23.60	41.99	0.00	--	--	--	--	--	--	--	--	--

TABLE 2a CUMULATIVE GROUNDWATER ELEVATION AND ANALYTICAL DATA
FORMER VAL STROUGH CHEVROLET, 327 34th STREET OAKLAND, CALIFORNIA

Well Number	Date	Casing Elevation (feet)	Depth to Water (feet)	GW Elevation (feet)	SPH Thickness (feet)	Concentration (µg/L)									
						Benzene	Toluene	Ethyl-benzene	Total Xylenes	TPH-g	TPH-d	TPH-mo	MTBE	TBA	
MW5	12/12/05	65.59	b 23.84	41.75	0.00	--	--	--	--	--	--	--	--	--	
MW5	03/29/06	65.59	b 17.19	48.40	0.00	<0.50	<0.50	<0.50	<0.50	73	<50	<100	<0.50	--	
MW5	06/19/06	65.59	b 20.22	45.37	0.00	--	--	--	--	--	--	--	--	--	
MW5	09/29/06	65.59	b 22.80	42.79	0.00	--	--	--	--	--	--	--	--	--	
MW5	12/12/06	65.59	b 23.08	42.51	0.00	--	--	--	--	--	--	--	--	--	
MW5	03/01/07	65.59	b 21.02	44.57	0.00	<0.50	<0.50	<0.50	<0.50	54	<50	<100	<0.50	--	
MW5	06/12/07	65.59	b 22.78	42.81	0.00	--	--	--	--	--	--	--	--	--	
MW5	09/25/07	65.59	b 24.45	41.14	0.00	<0.50	1.5	<0.50	<0.50	<50	<50	<100	0.64	--	
MW5	12/20/07	65.59	b 24.52	41.07	0.00	--	--	--	--	--	--	--	--	--	
MW5	03/26/08	65.59	b 24.08	41.51	0.00	<0.50	1.5	<0.50	<0.50	<50	<50	<100	<0.5	--	
MW5	06/03/08	65.59	b 23.68	41.91	0.00	--	--	--	--	--	--	--	--	--	
MW5	09/25/08	65.59	b 25.00	40.59	0.00	<0.50	<0.50	<0.50	<0.50	<50	<50	<100	0.66	<5.0	
MW5	12/29/08	65.59	b 24.92	40.67	0.00	<0.50	<0.50	<0.50	<0.50	71	<50	<100	<0.5	<5.0	
MW5	03/24/09	65.59	l 21.85	43.74	0.00	<0.50	<0.50	<0.50	<0.50	<50	<50	<100	0.54	<5.0	
MW5	06/02/09	65.59	l 22.70	42.89	0.00	<0.50	<0.50	<0.50	<0.50	<50	<50	<100	<0.5	<5.0	
MW5	09/10/09	65.59	l 24.12	41.47	0.00	< 0.50	< 0.50	< 0.50	< 0.50	< 50	< 50	< 100	0.56	< 5.0	
MW5	12/04/09	65.59	l dry	--	0.00	--	--	--	--	--	--	--	--	--	
MW5	03/10/10	65.59	l 25.90	39.69	0.00	< 0.50	< 0.50	< 0.50	< 0.50	55	< 50	< 100	0.71	--	
MW5	05/28/10	65.59	l 25.54	40.05	0.00	--	--	--	--	--	--	--	--	--	
MW5	08/26/10	65.59	l 25.59	40.00	0.00	<0.50	<0.50	<0.50	<0.50	<50	<50	<100	0.52	--	
MW5	12/22/10	65.59	l 24.80	40.79	0.00	--	--	--	--	--	--	--	--	--	
MW6	07/20/00	96.60	a 18.30	78.30	0.00	<0.50	<0.50	<0.50	<0.50	<50	<50	<300	160	--	
MW6	10/11/00	96.60	a 18.69	77.91	0.00	--	--	--	--	--	--	--	--	--	
MW6	04/10-11/01	96.60	a 17.85	78.75	0.00	<0.50	<0.50	<0.50	<0.50	<50	<50	<300	180	--	
MW6	07/10/01	96.60	a 18.43	78.17	0.00	--	--	--	--	--	--	--	--	--	
MW6	11/20/01	59.60	b 18.67	40.93	0.00	<0.50	<0.50	<0.50	<0.50	<50	<50	<300	450	--	
MW6	02/19/02	59.60	b 17.40	42.20	0.00	--	--	--	--	--	--	--	--	--	
MW6	05/21/02	59.60	b 17.68	41.92	0.00	<0.50	<0.50	<0.50	<0.50	<50	<50	<300	170	--	
MW6	06/27/03	59.60	b 17.73	41.87	0.00	--	--	--	--	--	--	--	--	--	
MW6	09/29/03	59.60	b 18.48	41.12	0.00	<1.0	<1.0	<1.0	<2.0	230	<50	<500	340	--	
MW6	12/12/03	59.60	b 17.89	41.71	0.00	<2.5	<2.5	<2.5	<5.0	<250	51	<500	190	--	
MW6	03/15/04	59.60	b 16.46	43.14	0.00	<1.0	<1.0	<1.0	<2.0	200	<50	<500	220	--	
MW6	06/24/04	59.60	b 17.97	41.63	0.00	<1.0	<1.0	<1.0	<2.0	130	<50	<500	190	--	
MW6	09/29/04	59.60	b 18.55	41.05	0.00	<0.50	0.61	<0.50	1.2	210	<50	<500	190	--	
MW6	12/13/04	59.60	b 17.88	41.72	0.00	--	--	--	--	--	--	--	--	--	
MW6	03/14/05	59.60	b 16.82	42.78	0.00	<0.50	<0.50	<0.50	1.8	160	<50	<500	190	--	
MW6	06/15/05	59.60	b 17.60	42.00	0.00	--	--	--	--	--	--	--	--	--	
MW6	09/26/05	59.60	b NM	NM	0.00	--	--	--	--	--	--	--	--	--	
MW6	12/12/05	59.60	b 18.33	41.27	0.00	0.62	<0.50	<0.50	1.0	81	<50	<500	140	--	
MW6	03/29/06	59.60	b 14.53	45.07	0.00	<0.50	<0.50	<0.50	<0.50	<50	<50	<100	120	--	
MW6	06/19/06	59.60	b 16.46	43.14	0.00	--	--	--	--	--	--	--	--	--	
MW6	09/29/06	59.60	b 17.60	42.00	0.00	0.87	<0.50	<0.50	<0.50	<50	<50	<100	140	--	
MW6	12/12/06	59.60	b 16.93	42.67	0.00	0.67	<0.50	<0.50	<0.50	<50	<50	230	89	--	
MW6	03/01/07	59.60	b 16.30	43.30	0.00	<0.50	<0.50	<0.50	<0.50	<50	<50	<100	78	--	
MW6	06/12/07	59.60	b 17.38	42.22	0.00	--	--	--	--	--	--	--	--	--	
MW6	09/25/07	59.60	b 18.36	41.24	0.00	<0.50	<0.50	<0.50	<0.50	<50	<50	<100	89	--	
MW6	12/20/07	59.60	b 17.90	41.70	0.00	--	--	--	--	--	--	--	--	--	
MW6	03/26/08	59.60	b 17.37	42.23	0.00	<0.50	<0.50	<0.50	<0.50	<50	<50	<100	68	--	
MW6	06/03/08	59.60	b 17.11	42.49	0.00	--	--	--	--	--	--	--	--	--	

TABLE 2a CUMULATIVE GROUNDWATER ELEVATION AND ANALYTICAL DATA
FORMER VAL STROUGH CHEVROLET, 327 34th STREET OAKLAND, CALIFORNIA

Well Number	Date	Casing Elevation (feet)	Depth to Water (feet)	GW Elevation (feet)	SPH Thickness (feet)	Concentration (µg/L)									
						Benzene	Toluene	Ethyl-benzene	Total Xylenes	TPH-g	TPH-d	TPH-mo	MTBE	TBA	
MW6	09/25/08	59.60	b	18.82	40.78	0.00	<0.50	<0.50	<0.50	<0.50	<50	<50	<100	78	<5.0
MW6	12/29/08	59.60	b	18.30	41.30	0.00	0.77	<0.50	<0.50	<0.50	<50	<50	<100	44	<5.0
MW6	03/24/09	59.60	l	16.80	42.80	0.00	<0.50	<0.50	<0.50	<0.50	<50	<50	<100	51	<5.0
MW6	06/02/09	59.60	l	17.27	42.33	0.00	<0.50	<0.50	<0.50	<0.50	<50	<50	<100	59	<5.0
MW6	09/10/09	59.60	l	18.20	41.40	0.00	<0.50	<0.50	<0.50	<0.50	<50	<50	<100	73	<5.0
MW6	12/04/09	59.60	l	19.07	40.53	0.00	<0.50	<0.50	<0.50	<0.50	<50	<50	<100	50	<5.0
MW6	03/10/10	59.60	l	17.80	41.80	0.00	<0.50	<0.50	<0.50	<0.50	<50	<50	<100	51	--
MW6	05/28/10	59.60	l	18.02	41.58	0.00	--	--	--	--	--	--	--	--	--
MW6	08/26/10	59.60	l	18.70	40.90	0.00	<0.50	<0.50	<0.50	<0.50	<50	<0.50	<100	47	--
MW6	12/22/10	59.60	l	17.84	41.76	0.00	--	--	--	--	--	--	--	--	--
MW7	07/20/00	96.75	a	15.93	80.82	0.00	<0.50	<0.50	<0.50	<0.50	<50	<50	<300	<0.50	--
MW7	10/11/00	96.75	a	16.90	79.85	0.00	--	--	--	--	--	--	--	--	--
MW7	04/10-11/01	96.75	a	15.80	80.95	0.00	<0.50	<0.50	<0.50	<0.50	<50	<50	<300	<0.50	--
MW7	07/10/01	96.75	a	16.71	80.04	0.00	--	--	--	--	--	--	--	--	--
MW7	11/20/01	59.47	b	16.17	43.30	0.00	<0.50	<0.50	<0.50	<0.50	<50	<50	<300	<2.0	--
MW7	02/19/02	59.47	b	14.92	44.55	0.00	--	--	--	--	--	--	--	--	--
MW7	05/21/02	59.47	b	15.18	44.29	0.00	<0.50	<0.50	<0.50	<0.50	<50	<50	<300	<0.50	--
MW7	06/27/03	59.47	b	16.28	43.19	0.00	--	--	--	--	--	--	--	--	--
MW7	09/29/03	59.47	b	16.88	42.59	0.00	<0.50	<0.50	<0.50	<1.0	<50	<50	<500	0.62	--
MW7	12/12/03	59.47	b	14.95	44.52	0.00	<0.50	<0.50	<0.50	<1.0	<50	<50	<500	<0.50	--
MW7	03/15/04	59.47	b	14.77	44.70	0.00	<0.50	<0.50	<0.50	<1.0	<50	<50	<500	<0.50	--
MW7	06/24/04	59.47	b	16.33	43.14	0.00	<0.50	<0.50	<0.50	<1.0	<50	300	<500	<0.50	--
MW7	09/29/04	59.47	b	16.88	42.59	0.00	--	--	--	--	--	--	--	--	--
MW7	12/13/04	59.47	b	15.26	44.21	0.00	--	--	--	--	--	--	--	--	--
MW7	03/14/05	59.47	b	15.00	44.47	0.00	<0.50	<0.50	<0.50	<1.0	<50	<50	<500	<0.50	--
MW7	06/15/05	59.47	b	15.32	44.15	0.00	--	--	--	--	--	--	--	--	--
MW7	09/26/05	59.47	b	NM	NM	0.00	--	--	--	--	--	--	--	--	--
MW7	12/12/05	59.47	b	15.99	43.48	0.00	--	--	--	--	--	--	--	--	--
MW7	03/29/06	59.47	b	12.65	46.82	0.00	<0.50	<0.50	<0.50	<0.50	<50	<50	<100	<0.50	--
MW7	06/19/06	59.47	b	14.49	44.98	0.00	--	--	--	--	--	--	--	--	--
MW7	09/29/06	59.47	b	16.67	42.80	0.00	--	--	--	--	--	--	--	--	--
MW7	12/12/06	59.47	b	15.21	44.26	0.00	--	--	--	--	--	--	--	--	--
MW7	03/01/07	59.47	b	14.68	44.79	0.00	<0.50	<0.50	<0.50	<0.50	<50	<50	<100	<0.50	--
MW7	06/12/07	59.47	b	16.2	43.27	0.00	--	--	--	--	--	--	--	--	--
MW7	09/25/07	59.47	b	16.72	42.75	0.00	<0.50	<0.50	<0.50	<0.50	<50	<50	<100	<0.50	--
MW7	12/20/07	59.47	b	15.02	44.45	0.00	--	--	--	--	--	--	--	--	--
MW7	03/26/08	59.47	b	15.95	43.52	0.00	<0.50	<0.50	<0.50	<0.50	<50	<50	<100	<0.50	--
MW7	06/03/08	59.47	b	14.24	45.23	0.00	--	--	--	--	--	--	--	--	--
MW7	09/25/08	59.47	b	17.07	42.40	0.00	<0.50	<0.50	<0.50	<0.50	<50	<50	<100	<0.50	<5.0
MW7	12/29/08	59.47	b	15.64	43.83	0.00	<0.50	<0.50	<0.50	<0.50	<50	<50	<100	<0.50	<5.0
MW7	03/24/09	59.49	l	14.57	44.92	0.00	<0.50	<0.50	<0.50	<0.50	<50	<50	<100	<0.50	<5.0
MW7	06/02/09	59.49	l	16.10	43.39	0.00	<0.50	<0.50	<0.50	<0.50	<50	<50	<100	<0.50	<5.0
MW7	09/10/09	59.49	l	17.10	42.39	0.00	<0.50	<0.50	<0.50	<0.50	<50	<50	<100	<0.50	<5.0
MW7	12/04/09	59.49	l	17.10	42.39	0.00	--	--	--	--	--	--	--	--	--
MW7	03/10/10	59.49	l	15.17	44.32	0.00	--	--	--	--	--	--	--	--	--
MW7	05/28/10	59.49	l	15.20	44.29	0.00	--	--	--	--	--	--	--	--	--
MW7	08/26/10	59.49	l	17.10	42.39	0.00	<0.50	<0.50	<0.50	<0.50	<50	<50	<100	<0.50	--
MW7	12/22/10	59.49	l	14.94	44.55	0.00	--	--	--	--	--	--	--	--	--

TABLE 2a CUMULATIVE GROUNDWATER ELEVATION AND ANALYTICAL DATA
 FORMER VAL STROUGH CHEVROLET, 327 34th STREET OAKLAND, CALIFORNIA

Well Number	Date	Casing Elevation (feet)	Depth to Water (feet)	GW Elevation (feet)	SPH Thickness (feet)	Concentration (µg/L)									
						Benzene	Toluene	Ethyl-benzene	Total Xylenes	TPH-g	TPH-d	TPH-mo	MTBE	TBA	
MW8	12/29/08	NS	b 15.71	NC	0.00	<0.50	0.64	<0.50	0.78	<50	<50	<100	1.5	<5.0	
MW8	03/24/09	57.07	1 16.08	40.99	0.00	<0.50	<0.50	<0.50	<0.50	<50	<50	<100	<0.50	<5.0	
MW8	06/02/09	57.07	1 15.46	41.61	0.00	<0.50	<0.50	<0.50	<0.50	<50	<50	<100	<0.50	<5.0	
MW8	09/10/09	57.07	1 15.58	41.49	0.00	< 0.50	< 0.50	< 0.50	< 0.50	< 50	< 50	< 100	2.4	< 5.0	
MW8	12/04/09	57.07	1 16.27	40.80	0.03	--	--	--	--	--	--	--	--	--	
MW8	03/10/10	57.07	1 14.47	42.60	0.03	--	--	--	--	--	--	--	--	--	
MW8	05/28/10	57.07	1 16.12	40.95	0.03	--	--	--	--	--	--	--	--	--	
MW8	08/26/10	57.07	1 16.36	40.71	0.00	<0.50	<0.50	<0.50	<0.50	<50	<50	<100	1.1	--	
MW8	12/22/10	57.07	1 16.25	40.82	0.03	--	--	--	--	--	--	--	--	--	
MW9A	09/10/09	65.90	22.51	43.39	0.00	7,800	33,000	4,500	25,000	160,000	< 20,000	410	1,800	780	
MW9A	12/04/09	65.90	24.42	41.48	0.00	--	--	--	--	--	--	--	--	--	
MW9A (m)	12/28/09	65.90	24.62	41.28	sheen	12,000	34,000	4,300	24,000	180,000	<200,000	3,400	2,100	680	
MW9A	03/10/10	65.90	22.30	43.60	0.00	15,000	42,000	4,800	26,000	210,000	< 40,000	250	2,300	--	
MW9A	05/28/10	65.90	22.62	43.29	(n) 0.02	Not Sampled due to Free Product									
MW9A	08/26/10	65.90	23.21	42.70	0.00	2,600	19,000	3,000	22,000	150,000	<500,000	11,000	75	--	
MW9A	09/21/10	65.90	NM	NC	0.00	1,400	9,600	1,600	12,000	70,000	--	--	--	--	
MW9A	12/22/10	65.90	22.63	43.28	0.00	4,400	17,000	1,900	13,000	83,000	<1500	<100	250	--	
MW9B	09/10/09	65.85	22.30	43.55	0.00	640	4,500	1,100	6,500	36,000	< 3,000	< 100	61	< 50	
MW9B	12/04/09	65.85	24.00	41.85	0.00	63	250	180	620	5,600	< 300	< 100	3.1	< 5.0	
MW9B	03/10/10	65.85	22.41	43.44	0.00	98	310	340	900	7,500	< 600	< 100	5.7	--	
MW9B	05/28/10	65.85	22.50	43.35	0.00	31	75	150	270	2,900	< 400	< 100	2.9	--	
MW9B	08/26/10	65.85	23.31	42.54	0.00	13	160	310	2,000	14,000	<1000	<100	88	--	
MW9B	09/20/10	65.85	NM	NC	0.00	7	110	140	830	6,200	--	--	--	--	
MW9B	12/22/10	65.85	23.20	42.65	0.00	<0.5	3	1	10	140	<50	<100	4.5	--	
O1	09/10/09	65.91	22.44	43.47	0.00	960	2,400	1,000	4,600	23,000	< 1,500	< 100	180	84	
O1	12/04/09	65.91	24.33	41.58	0.00	1,000	3,700	1,700	7,400	38,000	< 1000	< 100	310	200	
O1	03/10/10	65.91	22.20	43.71	0.00	660	2,600	970	5,300	29,000	< 1000	< 100	200	--	
O1	05/28/10	65.91	22.49	43.42	0.00	610	2,000	1,000	4,200	21,000	< 1500	< 100	270	--	
O1	08/26/10	65.91	23.25	42.66	0.00	29	160	59	680	5,000	<500	<100	97	--	
O1	09/20/10	65.91	NM	NC	0.00	24	140	28	330	2,000	--	--	--	--	
O1	12/22/10	65.91	22.70	43.21	0.00	10	35	3	30	460	<50	<100	220	--	

TABLE 2a CUMULATIVE GROUNDWATER ELEVATION AND ANALYTICAL DATA
 FORMER VAL STROUGH CHEVROLET, 327 34th STREET OAKLAND, CALIFORNIA

SPH	Separate-phase hydrocarbons.
GW	Groundwater.
TPH-g	Total Petroleum Hydrocarbons as gasoline.
TPH-d	Total Petroleum Hydrocarbons as diesel.
TPH-mo	Total Petroleum Hydrocarbons as motor oil.
MTBE	Methyl tertiary butyl ether.
TBA	Tertiary Butyl Alcohol
NC	Not calculated.
NS	Not surveyed
µg/L	Micrograms per liter.
*	SPH present; not sampled.
**	Well MW4 elevation modified due to site renovation activities. Not Surveyed.
--	Not analyzed or not sampled.
<	Less than the laboratory reporting limits.
a	Elevations are referenced to monitoring well MW1, with assumed datum of 100.00 feet.
b	Elevations based on a survey conducted August 2002 and referenced benchmark with known elevation (NGVD 29) of 60.40 feet above mean sea level.
c	Analysis not conducted due to broken sample containers.
d	Hydrocarbon reported in the gasoline range does not match laboratory gasoline standard.
e	Groundwater elevation in wells with LPH are corrected by multiplying the specific gravity of gasoline (0.69) by the LPH thickness and adding this value to the water elevation.
f	Hydrocarbon reported is in the early diesel range, and does not match the laboratory diesel standard.
g	Sample contained discrete peak in gasoline range and identified by lab as MTBE.
h	Quantity of unknown hydrocarbon(s) in sample based on diesel.
i	The concentration reported reflect(s) individual or discrete unidentified peaks not matching a typical fuel pattern.
j	Depth to groundwater is based on the depth of the stingers.
k	Quantity of unknown hydrocarbon(s) in sample based on motor oil.
l	Resurveyed Prior to 1st Quarter 2009 Measurements
m	The well was not purged due to insufficient water.
n	Groundwater elevation corrected by substituting the "product thickness" in the water column of the well with thickness of the groundwater equivalent, determined by multiplying the specific gravity of gasoline (0.739) by the "product thickness".

TABLE 3 HISTORICAL GRAB GROUNDWATER ANALYTICAL DATA
FORMER VAL STROUGH CHEVROLET, 327 34th STREET OAKLAND, CALIFORNIA

Boring ID	Date	Depth (feet)	Concentrations (µg/L)							
			Benzene	Toluene	Ethyl-benzene	Total Xylenes	MTBE	TPH-g	TPH-d	TPH-mo
HP1	12/18/2003	26-30	<5.0	<5.0	<5.0	11	480	410	180	<500
HP3	12/18/2003	32-36	<0.50	<0.50	<0.50	<1.0	0.55	<50	75	<500
SB3	12/26/2007	24	0.75	28	35	180	0.59	1800	<1000	<100
SB3	12/26/2007	40	<0.50	1.1	5.3	33	1	240	<400	<100
SB4	12/26/2007	23	160	120	200	240	1.8	3500	<1500	<100
SB4	12/26/2007	40	250	1400	280	2000	3.2	9900	<1500	<100
SB5	12/26/2007	24	660	11000	4200	20000	34	110000	<100000	310
SB5	12/26/2007	40	74	1000	380	2400	31	13000	<3000	<100
SB6	12/26/2007	25	<0.5	6.6	3.6	27	1.2	210	<100	<100
SB6	12/26/2007	40	85	1500	620	6900	15	35000	<18000	<100
SB7	12/26/2007	40	120	1100	470	2900	7.9	20000	<6000	<100
SB8	12/26/2007	40	320	1300	920	3100	100	17000	<3000	<100
SB9	12/26/2007	34	<0.5	<0.5	<0.5	<0.5	92	<50	69	<100
SB10	12/26/2007	21.3	<0.5	<0.5	<0.5	<0.5	30	<50	2200	5000
SB11	12/26/2007	17	<0.5	<0.5	<0.5	<0.5	<50	<50	200	220
SB12	12/26/2007	20	<0.5	<0.5	<0.5	<0.5	43	67	950	1200
SB13	12/26/2007	26	<0.5	<0.5	<0.5	<0.5	160	<50	3800	6600

TPH-g Total Petroleum Hydrocarbons as gasoline.

TPH-d Total Petroleum Hydrocarbons as diesel.

TPH-mo Total Petroleum Hydrocarbons as motor oil.

< less than the laboratory reporting limits.

660 Bold values reflect maximum detected concentrations

TABLE 4 GROUNDWATER MONITORING SCHEDULE
 FORMER VAL STROUGH CHEVROLET, 327 34th STREET OAKLAND, CALIFORNIA

Well Number	Groundwater Gauging Frequency	Groundwater Sampling and Analysis Frequency		
		BTEX and TPH-g	MTBE	TEPH
MW1	Q	S	S	S
MW2	Q	Q	Q	Q
MW3	Q	Q	Q	Q
MW4	Q	Q	Q	Q
MW5	Q	S	S	S
MW6	Q	S	S	S
MW7	Q	A	A	A
MW8	Q	A	A	A
MW9A	Q	Q	Q	Q
MW9B	Q	Q	Q	Q
O1	Q	Q	Q	Q

Q = Quarterly.

S = Semiannual (1st and 3rd Quarters).

A = Annual.

BTEX = Benzene, toluene, ethylbenzene, total xylenes.

MTBE = Methyl tertiary butyl ether.

TPH-g = Total Petroleum Hydrocarbons as gasoline.

TEPH = Total Extractable Petroleum Hydrocarbons, includes TPH-diesel and TPH-motor oil.



Appendix A
Field Documents

Equipment Calibration Log

Equipment make/model	Equipment ID/serial number	Date	Time	Calibration Standards	Equipment Reading	Equipment Calibrated	Temp (°C) (°F)	Tech init.	Comments
Ultrasonic	1226442	12/22/10 #	745	4, 7, 10	4.0, 7.0 10.0	Y	14	BM	
I	I	I	I	1413	1413	Y	14	BM	
PROO.DD.	#	I	I	100%	100% ^{1/2}	Y	-	BM	

Notes/comments:

Well Maintenance Inspection Form

Client: LRM

Site: Strough Oakland

Date: 12/22/10

Job #: MI-101222

Technician: BM

Page of

Inspection Point	Well Inspected - No Corrective Action Required	Entry Indicates Deficiency											Well Not Inspected (explain in notes)	Notes (Note any repairs made while on site)		
		Cap non-functional	Lock non-functional	Lock missing	Bolts missing (# missing / # total tabs)	Tabs stripped (# stripped / # total tabs.)	Tabs broken (# broken / # of total tabs)	Annular seal incomplete	Apron damaged	Rim / Lid broken	Trip Hazard	Below Grade			Other (explain in notes)	
MW1	X															
MW2	X															
MW3	X															
MW4	X															
MW5					2 2											
MW6	X															
MW7	X															
MW8	X															
MW9A	X															
MW9B	X															
O1	X															

Notes: _____

Repair codes: **rt**=retap/ bolts added or replaced **as**=annular seal repair,

Water Level Measurements

Job Number: M1-101222 Date: 12/22/10 Client: LRM

Site: Strough Oakland

Well I.D.	Time	Dia	Depth to NAPL	Thickness of NAPL	Depth to water (DTW)	Total Depth (measured)	Total Depth (historical)	Ref Point (TOC/ TOB)		
MW1	720	2			21.42		30.59	TOC		
MW2	730	2			22.47	31.78	31.74			
MW3	725	2	22.8	0.20	22.70	31.88	31.88			
MW4	722	2			21.21		27.54			
MW5	711	2			24.80		26.40			
MW6	705	2			17.84		26.55			
MW7	708	2			14.94		34.56			
MW8	715	1			16.25		26.65			
MW9A	735	2			22.63	24.30	25.20			
MW9B	733	2			23.20	38.39	34.58			
O1	728	2			22.70	39.53	35.17			

Purging And Sampling Data Sheet

Job#: M1-101222	Sampler: B Myers	Client: LRM
Well ID: MW-4	Date: 12/22/10	Site: Former Strough Chevy, Oakland
Well diam: 1/4" 1" <u>2"</u> 3" 4" 6" Other:	DTW: 21.21 Total Depth: 27.54	
Purge equip: ES - diam: Bladder Peri Waterra Positive Air Displacement Ext. System disp bailer teflon bailer other:		
Purge method: <u>3-5 Case Volume</u> Micro/Low-Flow Extraction Other:	Tubing: OD: New Dedicated NA	
Pump depth/ intake:	Multipliers: 1"= 0.04 2"= 0.16 3"= 0.37 4"= 0.65 5"= 1.02 6"= 1.47 Radius ² X 0.163	
(TD - DTW X Multiplier = 1 Volume		80% Recovery (TD - DTW X 0.20 + DTW)

1 Volume = 1 X 3 = 3 (Total Purge) 80% = 22.48

Time	Temp (°C/°F)	pH	Cond (mS/μS)	Turbidity (NTU)	Purge Rate (gal or mL/ min)	Volume Removed (gal / L)	DO (mg/l)	ORP	DTW	Notes
<i>initial</i>	18.1	7.1	939	71000	—	—	0.40	116	—	
749	18.4	6.9	907	71000	—	1	0.39	117	—	
751	18.6	6.7	905	71000	—	2	0.35	117	—	
753	18.8	6.7	898	71000	—	3	0.30	115	—	

Did well dewater? YES <input type="checkbox"/> NO <input checked="" type="checkbox"/>	Total volume removed: <u>3</u> (gal / L)
Sample method: Disp Bailer <input type="checkbox"/> <u>Ded. Tubing</u> <input type="checkbox"/> New Tubing <input type="checkbox"/> Ext. Port <input type="checkbox"/> Other: <input type="checkbox"/>	
Sample date: 12/22/10	Sample time: <u>755</u> DTW at sample: <u>—</u>
Sample ID: <u>MW-4</u>	Lab: Kiff Number of bottles: <u>5</u>
Analysis: TPH-G, BTEX, MTBE, TEPH-D, TEPH-MO	
Equipment blank ID @	Field blank ID @
Duplicate ID:	Pre-purge DO: Post purge DO:
Fe2 ⁺ :	Pre-purge ORP: Post purge ORP:
NAPL depth:	Volume of NAPL: Volume removed: ml

Development Data Sheet

Job#: M1-101222	Sampler: B Myers	Client: LRM
Well ID: MW91A	Date: 12/22/10	Site: Former Strough Chevy, Oakland
Well diam: 1/4" 1" <u>2"</u> 3" 4" 6" Other:	DTW: 22.63	TD Before: 24.30 TD After: 25.20
Purge equip: ES - diam: Bladder Peri Waterra Positive Air Displacement Ext. System disp bailer teflon bailer other: Surge block used: <u>Y</u> N		
Length of time surged prior to development: 5 mins		
Pump depth/ intake:	Multipliers: 1"= 0.04 2"= 0.16 3"= 0.37 4"= 0.65 5"=1.02 6"= 1.47 Radius ² X 0.163	
(TD - DTW X Multiplier = 1 Volume		80% Recovery (TD - DTW X 0.20 + DTW)

1 Volume = _____ X 10 = _____ (Total Purge) Meter(s): _____

Time	Temp (°C / °F)	pH	Cond (ms / (S))	Turbidity (NTU)	Purge Rate (gal or mL / min)	Volume Removed (gal / L)	DTW	Notes
952 1005	17.6	11.1	7806	>1000	—	0.5	—	TD = 25.10
		Well dewatered						
1025	17.5	11.1	22.19ms	>1000	—	—	—	TD = 25.14
		Well dewatered						TD = 25.18
1040	17.7	11.1	21.49ms	>1000	—	—	—	TD = 25.20
		Well dewatered						
Development per client								

Did well dewater? <u>YES</u> NO	Total volume removed: ≈ / (gal / L)
Sample method (if applicable): Disp Bailer Ded. Tubing New Tubing Ext. Port Other:	
Sample date: / /	Sample time: / / DTW at sample: /
Sample ID: /	Lab: / Number of bottles: /
Analysis: /	

Purging And Sampling Data Sheet

Job#: M1-101222	Sampler: B Myers	Client: LRM
Well ID: 01	Date: 12/22/10	Site: Former Strough Chevy, Oakland
Well diam: 1/4" 1" 2" 3" 4" 6" Other:	DTW: 22.70 Total Depth: 39.53	
Purge equip: ES - diam: Bladder <u>Peri</u> Waterra Positive Air Displacement Ext. System disp bailer teflon bailer other:		
Tubing: OD: New Dedicated NA		
Purge method: <u>3-5 Case Volume</u> Micro/Low-Flow Extraction Other:		
Pump depth/ intake: Multipliers: 1"= 0.04 2"= 0.16 3"= 0.37 4"= 0.65 5"=1.02 6"= 1.47 Radius ² X 0.163		
(TD - DTW X Multiplier = 1 Volume		80% Recovery (TD - DTW X 0.20 + DTW)

1 Volume = _____ X 3 = _____ (Total Purge) 80%= _____

intial

Time	Temp (°C/°F)	pH	Cond (mS / (S))	Turbidity (NTU)	Purge Rate (gal or ml / min)	Volume Removed (gal / L)	DO (mg/l)	ORP	DTW	Notes
820	18.0	9.9	6199	36	—	—	2.3	-186	—	

Did well dewater? YES NO Total volume removed: _____ (gal / L)

Sample method: Disp Bailer Ded. Tubing New Tubing Ext. Port Other:

Sample date: 12/22/10 Sample time: 820 DTW at sample: _____

Sample ID: 01 Lab: Kiff Number of bottles: 5

Analysis: TPH-G, BTEX, MTBE, TEPH-D, TEPH-MO

Equipment blank ID @ Field blank ID @

Duplicate ID: Pre-purge DO: Post purge DO:

Fe²⁺: Pre-purge ORP: Post purge ORP:

NAPL depth: Volume of NAPL: Volume removed: ml



Appendix B

Laboratory Analytical Reports and Chain-of-Custody Documentation



Laboratory Results

Mehrdad Javaherian
LRM Consulting, Inc.
1534 Plaza Lane, #145
Burlingame, CA 94010

Subject : 5 Water Samples
Project Name : Former Strough Chevy - Oakland
Project Number : M1-101222

Dear Mr. Javaherian,

Chemical analysis of the samples referenced above has been completed. Summaries of the data are contained on the following pages. Sample(s) were received under documented chain-of-custody. US EPA protocols for sample storage and preservation were followed. Testing procedures comply with the 2003 NELAC standard. All soil samples are reported on a total weight (wet weight) basis unless noted otherwise in the case narrative. Laboratory results relate only to the samples tested. This report may be freely reproduced in full, but may only be reproduced in part with the express permission of Kiff Analytical, LLC. Kiff Analytical, LLC is certified by the State of California under the National Environmental Laboratory Accreditation Program (NELAP), lab # 08263CA. If you have any questions regarding procedures or results, please call me at 530-297-4800.

Sincerely,



Joel Kiff

Subject : 5 Water Samples
Project Name : Former Strough Chevy - Oakland
Project Number : M1-101222

Case Narrative

Surrogate Recovery for sample MW9A for test method Mod. EPA 8015 was outside of control limits. This may indicate a bias in the analysis due to the sample's matrix or an interference from compounds present in the sample.

Project Name : **Former Strough Chevy - Oakland**

Project Number : **M1-101222**

Sample : **MW2**

Matrix : Water

Lab Number : 75856-01

Sample Date :12/22/2010

Parameter	Measured Value	Method Reporting Limit	Units	Analysis Method	Date/Time Analyzed
Benzene	130	15	ug/L	EPA 8260B	12/23/10 05:05
Toluene	1100	15	ug/L	EPA 8260B	12/23/10 05:05
Ethylbenzene	430	15	ug/L	EPA 8260B	12/23/10 05:05
Total Xylenes	6000	15	ug/L	EPA 8260B	12/23/10 05:05
Methyl-t-butyl ether (MTBE)	640	15	ug/L	EPA 8260B	12/23/10 05:05
TPH as Gasoline	26000	1500	ug/L	EPA 8260B	12/23/10 05:05
1,2-Dichloroethane-d4 (Surr)	96.7		% Recovery	EPA 8260B	12/23/10 05:05
Toluene - d8 (Surr)	94.7		% Recovery	EPA 8260B	12/23/10 05:05
TPH as Diesel (w/ Silica Gel)	< 3000	3000	ug/L	M EPA 8015	12/28/10 00:25
(Note: MRL increased due to interference from Gasoline-range hydrocarbons.)					
TPH as Motor Oil (w/ Silica Gel)	< 100	100	ug/L	M EPA 8015	12/28/10 00:25
Octacosane (Silica Gel Surr)	92.9		% Recovery	M EPA 8015	12/28/10 00:25

Project Name : **Former Strough Chevy - Oakland**

Project Number : **M1-101222**

Sample : **MW4**

Matrix : Water

Lab Number : 75856-02

Sample Date :12/22/2010

Parameter	Measured Value	Method Reporting Limit	Units	Analysis Method	Date/Time Analyzed
Benzene	< 0.50	0.50	ug/L	EPA 8260B	12/23/10 06:10
Toluene	< 0.50	0.50	ug/L	EPA 8260B	12/23/10 06:10
Ethylbenzene	< 0.50	0.50	ug/L	EPA 8260B	12/23/10 06:10
Total Xylenes	< 0.50	0.50	ug/L	EPA 8260B	12/23/10 06:10
Methyl-t-butyl ether (MTBE)	50	0.50	ug/L	EPA 8260B	12/23/10 06:10
TPH as Gasoline	< 50	50	ug/L	EPA 8260B	12/23/10 06:10
1,2-Dichloroethane-d4 (Surr)	103		% Recovery	EPA 8260B	12/23/10 06:10
Toluene - d8 (Surr)	99.9		% Recovery	EPA 8260B	12/23/10 06:10
TPH as Diesel (w/ Silica Gel)	< 50	50	ug/L	M EPA 8015	12/28/10 01:23
TPH as Motor Oil (w/ Silica Gel)	< 100	100	ug/L	M EPA 8015	12/28/10 01:23
Octacosane (Silica Gel Surr)	94.4		% Recovery	M EPA 8015	12/28/10 01:23

Project Name : **Former Strough Chevy - Oakland**

Project Number : **M1-101222**

Sample : **MW9A**

Matrix : Water

Lab Number : 75856-03

Sample Date :12/22/2010

Parameter	Measured Value	Method Reporting Limit	Units	Analysis Method	Date/Time Analyzed
Benzene	4400	70	ug/L	EPA 8260B	12/23/10 05:39
Toluene	17000	70	ug/L	EPA 8260B	12/23/10 05:39
Ethylbenzene	1900	70	ug/L	EPA 8260B	12/23/10 05:39
Total Xylenes	13000	70	ug/L	EPA 8260B	12/23/10 05:39
Methyl-t-butyl ether (MTBE)	250	70	ug/L	EPA 8260B	12/23/10 05:39
TPH as Gasoline	83000	7000	ug/L	EPA 8260B	12/23/10 05:39
1,2-Dichloroethane-d4 (Surr)	97.0		% Recovery	EPA 8260B	12/23/10 05:39
Toluene - d8 (Surr)	94.6		% Recovery	EPA 8260B	12/23/10 05:39
TPH as Diesel (w/ Silica Gel)	< 1500	1500	ug/L	M EPA 8015	12/28/10 02:22
(Note: MRL increased due to interference from Gasoline-range hydrocarbons.)					
TPH as Motor Oil (w/ Silica Gel)	< 100	100	ug/L	M EPA 8015	12/28/10 02:22
Octacosane (Silica Gel Surr)	67.8		% Recovery	M EPA 8015	12/28/10 02:22

Project Name : **Former Strough Chevy - Oakland**

Project Number : **M1-101222**

Sample : **MW9B**

Matrix : Water

Lab Number : 75856-04

Sample Date :12/22/2010

Parameter	Measured Value	Method Reporting Limit	Units	Analysis Method	Date/Time Analyzed
Benzene	< 0.50	0.50	ug/L	EPA 8260B	12/23/10 18:04
Toluene	2.6	0.50	ug/L	EPA 8260B	12/23/10 18:04
Ethylbenzene	1.1	0.50	ug/L	EPA 8260B	12/23/10 18:04
Total Xylenes	9.9	0.50	ug/L	EPA 8260B	12/23/10 18:04
Methyl-t-butyl ether (MTBE)	4.5	0.50	ug/L	EPA 8260B	12/23/10 18:04
TPH as Gasoline	140	50	ug/L	EPA 8260B	12/23/10 18:04
1,2-Dichloroethane-d4 (Surr)	100		% Recovery	EPA 8260B	12/23/10 18:04
Toluene - d8 (Surr)	99.7		% Recovery	EPA 8260B	12/23/10 18:04
TPH as Diesel (w/ Silica Gel)	< 50	50	ug/L	M EPA 8015	12/28/10 03:20
TPH as Motor Oil (w/ Silica Gel)	< 100	100	ug/L	M EPA 8015	12/28/10 03:20
Octacosane (Silica Gel Surr)	87.2		% Recovery	M EPA 8015	12/28/10 03:20

Project Name : **Former Strough Chevy - Oakland**

Project Number : **M1-101222**

Sample : **O1**

Matrix : Water

Lab Number : 75856-05

Sample Date :12/22/2010

Parameter	Measured Value	Method Reporting Limit	Units	Analysis Method	Date/Time Analyzed
Benzene	9.8	0.50	ug/L	EPA 8260B	12/23/10 06:45
Toluene	35	0.50	ug/L	EPA 8260B	12/23/10 06:45
Ethylbenzene	3.4	0.50	ug/L	EPA 8260B	12/23/10 06:45
Total Xylenes	30	0.50	ug/L	EPA 8260B	12/23/10 06:45
Methyl-t-butyl ether (MTBE)	220	0.50	ug/L	EPA 8260B	12/23/10 06:45
TPH as Gasoline	460	50	ug/L	EPA 8260B	12/23/10 06:45
1,2-Dichloroethane-d4 (Surr)	103		% Recovery	EPA 8260B	12/23/10 06:45
Toluene - d8 (Surr)	96.7		% Recovery	EPA 8260B	12/23/10 06:45
TPH as Diesel (w/ Silica Gel)	< 50	50	ug/L	M EPA 8015	12/28/10 04:18
TPH as Motor Oil (w/ Silica Gel)	< 100	100	ug/L	M EPA 8015	12/28/10 04:18
Octacosane (Silica Gel Surr)	94.2		% Recovery	M EPA 8015	12/28/10 04:18

QC Report : Method Blank DataProject Name : **Former Strough Chevy - Oakland**Project Number : **M1-101222**

Parameter	Measured Value	Method Reporting Limit	Units	Analysis Method	Date Analyzed
TPH as Diesel (w/ Silica Gel)	< 50	50	ug/L	M EPA 8015	12/27/2010
TPH as Motor Oil (w/ Silica Gel)	< 100	100	ug/L	M EPA 8015	12/27/2010
Octacosane (Silica Gel Surr)	92.0		%	M EPA 8015	12/27/2010
Benzene	< 0.50	0.50	ug/L	EPA 8260B	12/23/2010
Ethylbenzene	< 0.50	0.50	ug/L	EPA 8260B	12/23/2010
Toluene	< 0.50	0.50	ug/L	EPA 8260B	12/23/2010
Total Xylenes	< 0.50	0.50	ug/L	EPA 8260B	12/23/2010
Methyl-t-butyl ether (MTBE)	< 0.50	0.50	ug/L	EPA 8260B	12/23/2010
TPH as Gasoline	< 50	50	ug/L	EPA 8260B	12/23/2010
1,2-Dichloroethane-d4 (Surr)	102		%	EPA 8260B	12/23/2010
Toluene - d8 (Surr)	97.3		%	EPA 8260B	12/23/2010
Benzene	< 0.50	0.50	ug/L	EPA 8260B	12/23/2010
Ethylbenzene	< 0.50	0.50	ug/L	EPA 8260B	12/23/2010
Toluene	< 0.50	0.50	ug/L	EPA 8260B	12/23/2010
Total Xylenes	< 0.50	0.50	ug/L	EPA 8260B	12/23/2010
Methyl-t-butyl ether (MTBE)	< 0.50	0.50	ug/L	EPA 8260B	12/23/2010
TPH as Gasoline	< 50	50	ug/L	EPA 8260B	12/23/2010
1,2-Dichloroethane-d4 (Surr)	100		%	EPA 8260B	12/23/2010
Toluene - d8 (Surr)	99.1		%	EPA 8260B	12/23/2010

Parameter	Measured Value	Method Reporting Limit	Units	Analysis Method	Date Analyzed
Benzene	< 0.50	0.50	ug/L	EPA 8260B	12/22/2010
Ethylbenzene	< 0.50	0.50	ug/L	EPA 8260B	12/22/2010
Toluene	< 0.50	0.50	ug/L	EPA 8260B	12/22/2010
Total Xylenes	< 0.50	0.50	ug/L	EPA 8260B	12/22/2010
Methyl-t-butyl ether (MTBE)	< 0.50	0.50	ug/L	EPA 8260B	12/22/2010
TPH as Gasoline	< 50	50	ug/L	EPA 8260B	12/22/2010
1,2-Dichloroethane-d4 (Surr)	102		%	EPA 8260B	12/22/2010
Toluene - d8 (Surr)	98.4		%	EPA 8260B	12/22/2010

QC Report : Matrix Spike/ Matrix Spike Duplicate

Project Name : **Former Strough Chevy - Oakland**Project Number : **M1-101222**

Parameter	Spiked Sample	Sample Value	Spike Level	Spike Dup. Level	Spiked Sample Value	Duplicate Spiked Sample Value	Units	Analysis Method	Date Analyzed	Spiked Sample Percent Recov.	Duplicate Spiked Sample Percent Recov.	Relative Percent Diff.	Spiked Sample Percent Recov. Limit	Relative Percent Diff. Limit
TPH-D (Si Gel)	BLANK	<50	1000	1000	864	877	ug/L	M EPA 8015	12/27/10	86.4	87.7	1.42	70-130	25
Benzene	75826-05	<0.50	40.0	40.0	38.8	38.3	ug/L	EPA 8260B	12/23/10	96.9	95.8	1.14	80-120	25
Ethylbenzene	75826-05	<0.50	40.0	40.0	41.5	41.0	ug/L	EPA 8260B	12/23/10	104	102	1.14	80-120	25
Methyl-t-butyl ether	75826-05	20	39.9	39.9	58.0	58.4	ug/L	EPA 8260B	12/23/10	96.4	97.4	1.00	69.7-121	25
P + M Xylene	75826-05	<0.50	40.0	40.0	40.3	40.0	ug/L	EPA 8260B	12/23/10	101	99.9	0.780	76.8-120	25
Toluene	75826-05	<0.50	40.0	40.0	38.1	37.6	ug/L	EPA 8260B	12/23/10	95.2	94.0	1.23	80-120	25
Benzene	75861-02	<0.50	40.0	40.0	39.6	38.5	ug/L	EPA 8260B	12/23/10	99.0	96.2	2.88	80-120	25
Ethylbenzene	75861-02	3.4	40.0	40.0	45.1	43.9	ug/L	EPA 8260B	12/23/10	104	101	2.94	80-120	25
Methyl-t-butyl ether	75861-02	9.6	39.9	39.9	50.7	49.4	ug/L	EPA 8260B	12/23/10	103	100	3.20	69.7-121	25

QC Report : Matrix Spike/ Matrix Spike Duplicate

Project Name : **Former Strough Chevy - Oakland**Project Number : **M1-101222**

Parameter	Spiked Sample	Sample Value	Spike Level	Spike Dup. Level	Spiked Sample Value	Duplicate Spiked Sample Value	Units	Analysis Method	Date Analyzed	Spiked Sample Percent Recov.	Duplicate Spiked Sample Percent Recov.	Relative Percent Diff.	Spiked Sample Percent Recov. Limit	Relative Percent Diff. Limit
P + M Xylene														
Toluene	75861-02	1.5	40.0	40.0	41.4	40.1	ug/L	EPA 8260B	12/23/10	99.8	96.6	3.21	76.8-120	25
	75861-02	<0.50	40.0	40.0	39.2	39.0	ug/L	EPA 8260B	12/23/10	98.0	97.4	0.597	80-120	25
Benzene														
Ethylbenzene	75860-05	<0.50	40.0	40.0	40.6	38.0	ug/L	EPA 8260B	12/22/10	102	95.0	6.60	80-120	25
	75860-05	<0.50	40.0	40.0	43.0	40.9	ug/L	EPA 8260B	12/22/10	108	102	5.10	80-120	25
Methyl-t-butyl ether														
	75860-05	0.87	39.9	39.9	44.6	42.0	ug/L	EPA 8260B	12/22/10	110	103	6.09	69.7-121	25
P + M Xylene														
	75860-05	<0.50	40.0	40.0	42.2	40.6	ug/L	EPA 8260B	12/22/10	106	102	3.94	76.8-120	25
Toluene														
	75860-05	<0.50	40.0	40.0	41.1	39.2	ug/L	EPA 8260B	12/22/10	103	98.1	4.58	80-120	25

QC Report : Laboratory Control Sample (LCS)Project Name : **Former Strough Chevy - Oakland**Project Number : **M1-101222**

Parameter	Spike Level	Units	Analysis Method	Date Analyzed	LCS Percent Recov.	LCS Percent Recov. Limit
Benzene	40.0	ug/L	EPA 8260B	12/23/10	96.8	80-120
Ethylbenzene	40.0	ug/L	EPA 8260B	12/23/10	104	80-120
Methyl-t-butyl ether	39.9	ug/L	EPA 8260B	12/23/10	100	69.7-121
P + M Xylene	40.0	ug/L	EPA 8260B	12/23/10	101	76.8-120
Toluene	40.0	ug/L	EPA 8260B	12/23/10	94.4	80-120
Benzene	39.7	ug/L	EPA 8260B	12/23/10	97.3	80-120
Ethylbenzene	39.7	ug/L	EPA 8260B	12/23/10	102	80-120
Methyl-t-butyl ether	39.6	ug/L	EPA 8260B	12/23/10	99.9	69.7-121
P + M Xylene	39.7	ug/L	EPA 8260B	12/23/10	98.9	76.8-120
TPH as Gasoline	501	ug/L	EPA 8260B	12/23/10	94.0	70.0-130
Toluene	39.7	ug/L	EPA 8260B	12/23/10	97.4	80-120
Benzene	39.9	ug/L	EPA 8260B	12/22/10	95.4	80-120
Ethylbenzene	39.9	ug/L	EPA 8260B	12/22/10	101	80-120
Methyl-t-butyl ether	39.8	ug/L	EPA 8260B	12/22/10	103	69.7-121
P + M Xylene	39.9	ug/L	EPA 8260B	12/22/10	97.5	76.8-120
TPH as Gasoline	499	ug/L	EPA 8260B	12/22/10	91.6	70.0-130
Toluene	39.9	ug/L	EPA 8260B	12/22/10	97.3	80-120

Confluence Environmental, Inc.
 3308 El Camino Ave, Suite 300 # 148
 Sacramento, CA 95821
 916-760-7641 - main
 916-473-8617 - fax
 www.confluence-env.com

Chain of Custody

75856

Project Name: Former Strough Chevy - Oakland

Job Number: 11-101222

TAT: STANDARD 5 DAY 2 DAY 24 HOUR OTHER:

Lab: Kiff	Site Address: 327 34th St, Oakland	Confluence PM: Jason Brown
Address: 2795 2nd St, Suite 300, Davis CA 95616	California Global ID No.: T0600101644	Phone / Fax: 916-760-7641 / 916-473-8617
Contact: Troy Turpen	Include EDF w/ Report: <input checked="" type="checkbox"/> Yes <input type="checkbox"/> No	Confluence Log Code: CESC
Phone/ Fax: 530-297-4800 x.127	Consultant / PM: LRM / Merhdad Javaherian	Report to: Merhdad Javaherian
	Phone / Fax: (415) 706-8935	Invoice to: Merhdad Javaherian

Sample ID	Time	Date	Matrix			Laboratory No.	No. of Containers	Preservative					Requested Analysis				Notes and Comments
			Soil/Solid	Water/Liquid	Air			Unpreserved	H ₂ SO ₄	HNO ₃	HCl	NaOH	TEPH Diesel & Motor Oil* (8015)	TPH-G, BTEX (8260B)	MTBE (8260)	TBA (8260)	
MW 2	810	12/22	X			5				5		X	X	X			01
MW 4	755		X			1						X	X	X			02
MW 9A	852		X			1						X	X	X			03
MW 9B	840		X			1						X	X	X			04
01	820		X			1						X	X	X			05

Sampler's Name: <u>B. Myers</u>	Relinquished By / Affiliation: <u>[Signature]</u>	Date: <u>12/24/0</u>	Time: <u>1315</u>	Accepted By / Affiliation: <u>[Signature]</u>	Date: <u>12/20</u>	Time: <u>1317</u>
Sampler's Company: Confluence Environmental						
Shipment Date:						
Shipment Method:						
Special Instructions: *Run TEPH w/ silica gel cleanup						

