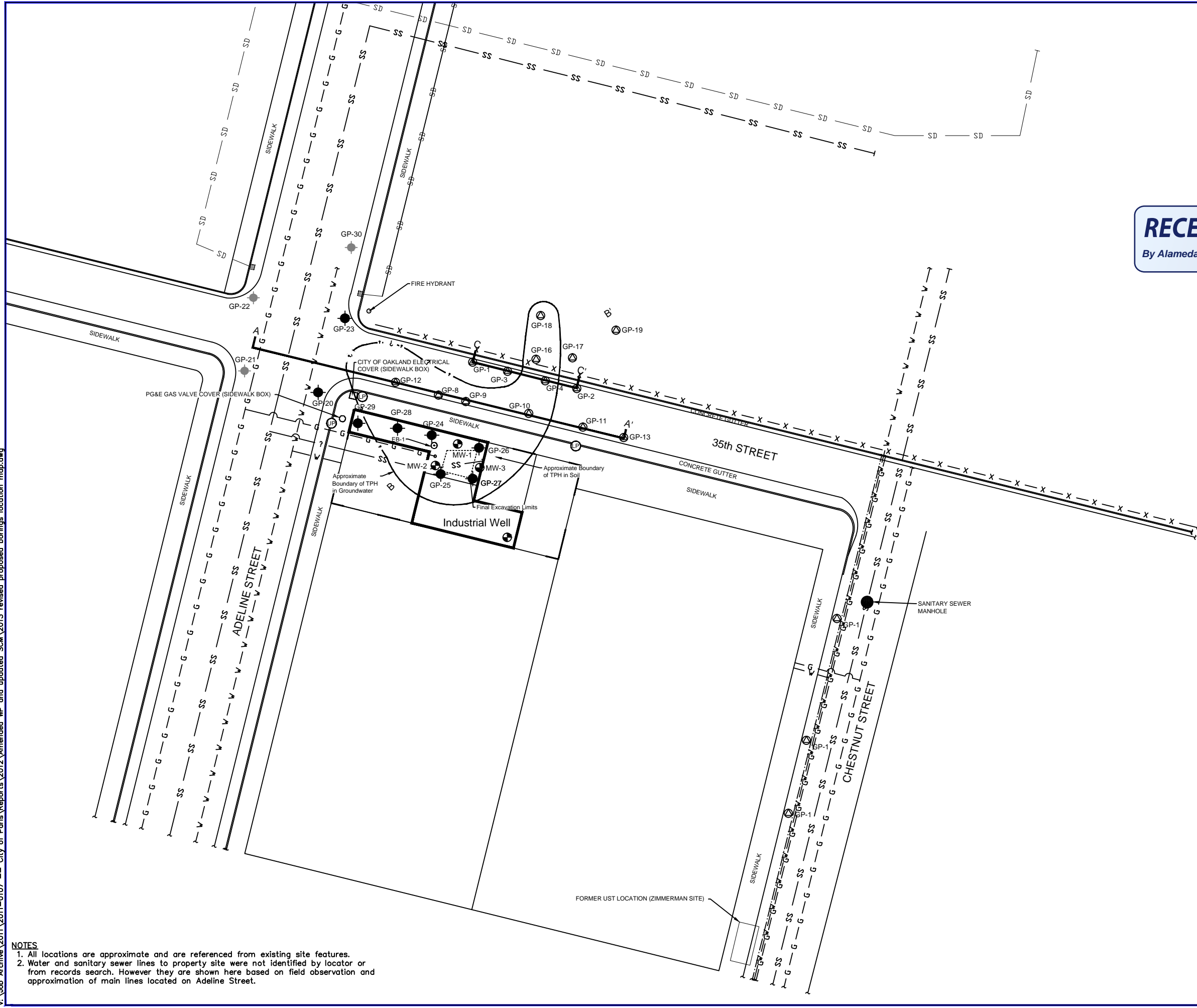


RECEIVED
 By Alameda County Environmental Health at 10:59 am, Apr 09, 2013



LEGEND:

- MW-1 Approximate Location of Well
- Approximate Location of Utility Pole
- Approximate Location of Light Pole
- Approximate Location of Water Line
- Approximate Location of Gas Line
- Approximate Location of Sanitary Sewer Line
- Approximate Location of Storm Drain
- Approximate Location of Unknown Discontinuous Signal
- Approximate Location of Fence
- Approximate Site Boundary
- Inlet for Storm Drain

NOTES
 1. All locations are approximate and are referenced from existing site features.
 2. Water and sanitary sewer lines to property site were not identified by locator or from records search. However they are shown here based on field observation and approximation of main lines located on Adeline Street.

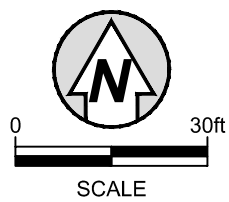
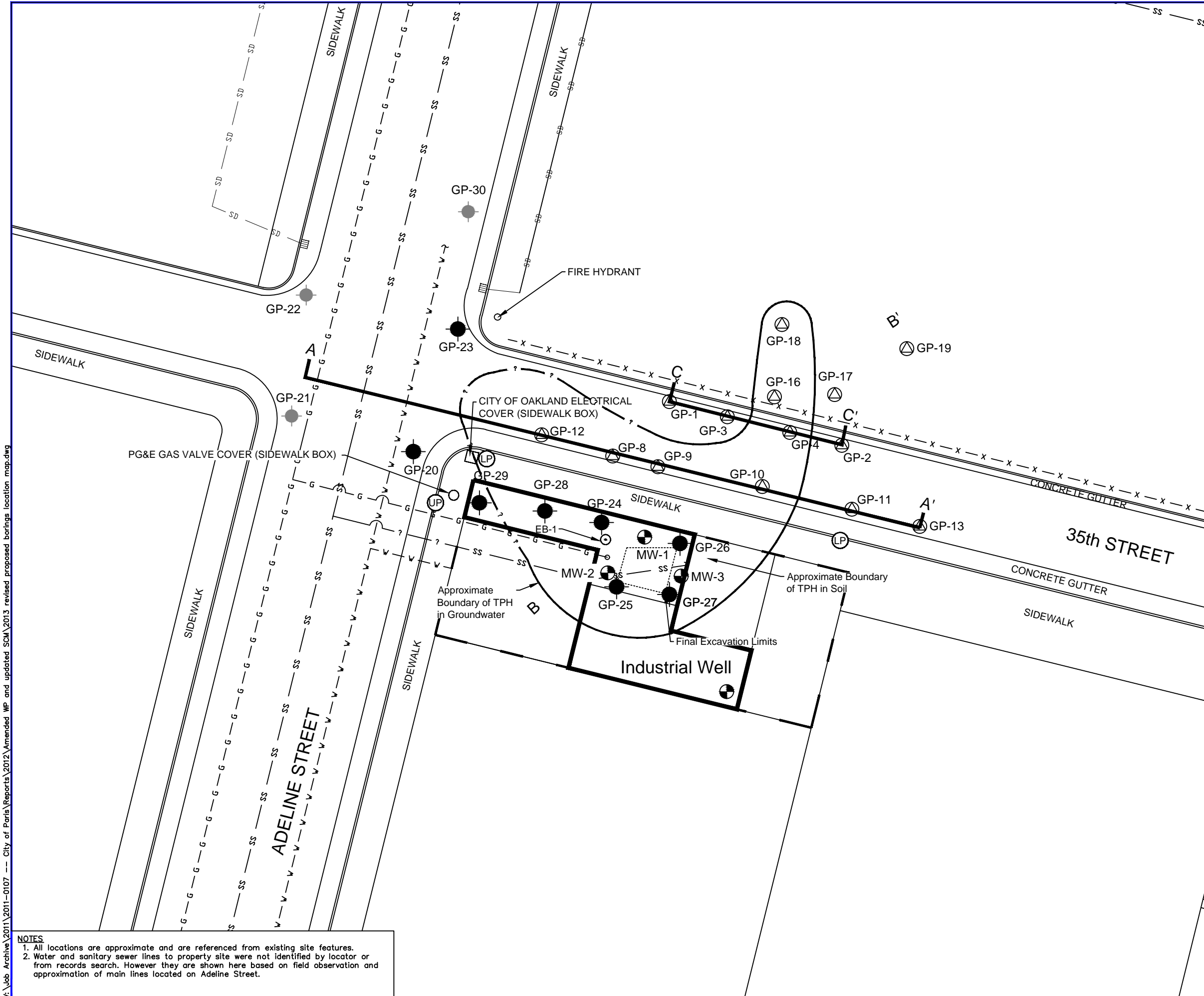
Taber Since 1954
 Taber Consultants
 Engineers and Geologists
 3911 West Capital Avenue
 West Sacramento, CA 95691-2116
 (916) 371-1690 Fax (916) 371-7265

Former City of Paris Cleaners
 3516 Adeline Street
 Oakland, California

Utility Location Map

2011-0107	Dec 2011	Figure - 4
-----------	----------	------------

V:\Job Archive\2011\2011-0107 -- City of Paris\Reports\2012\Amended WP and updated SCM\2013 revised proposed borings location map.dwg



LEGEND:

- Cross Section Location
- Approximate Lateral extent of TPH-SS in soil (includes concentrations quantified by the laboratory as TPH-G, but noted as non-typical TPH pattern in gasoline range)
- Approximate Lateral extent of TPH-SS in groundwater (includes concentrations quantified by the laboratory as TPH-G, but noted as non-typical TPH pattern in gasoline range). ? NW boundary to be explored
- Geophysical investigation exploration.
- GP-23 Proposed Boring Locations
- GP-23 Contingency Borings
- GP-19 Soil Boring May 2011 (Taber Consultants)
- EB-1 Soil Boring 3-19-98
- MW-1 Approximate Location of Well
- Approximate Location of Utility Pole
- Approximate Location of Light Pole
- Approximate Location of Water Line
- Approximate Location of Gas Line
- Approximate Location of Sanitary Sewer Line
- Approximate Location of Storm Drain
- Approximate Location of Unknown Discontinuous Signal
- Approximate Location of Fence
- Approximate Site Boundary
- Inlet for Storm Drain

V:\Job Archive\2011\2011-0107 -- City of Paris\Reports\2012\Amended WP and updated SCM\2013 revised proposed borings location map.dwg

NOTES
 1. All locations are approximate and are referenced from existing site features.
 2. Water and sanitary sewer lines to property site were not identified by locator or from records search. However they are shown here based on field observation and approximation of main lines located on Adeline Street.

Taber Since 1954
 Taber Consultants
 Engineers and Geologists
 3911 West Capital Avenue
 West Sacramento, CA 95691-2116
 (916) 371-1690 Fax (916) 371-7265

Former City of Paris Cleaners

3516 Adeline Street
 Oakland, California

Proposed Soil Boring Locations Adeline and Courtyard

2011-0107	April 2013	Figure 11
-----------	------------	-----------