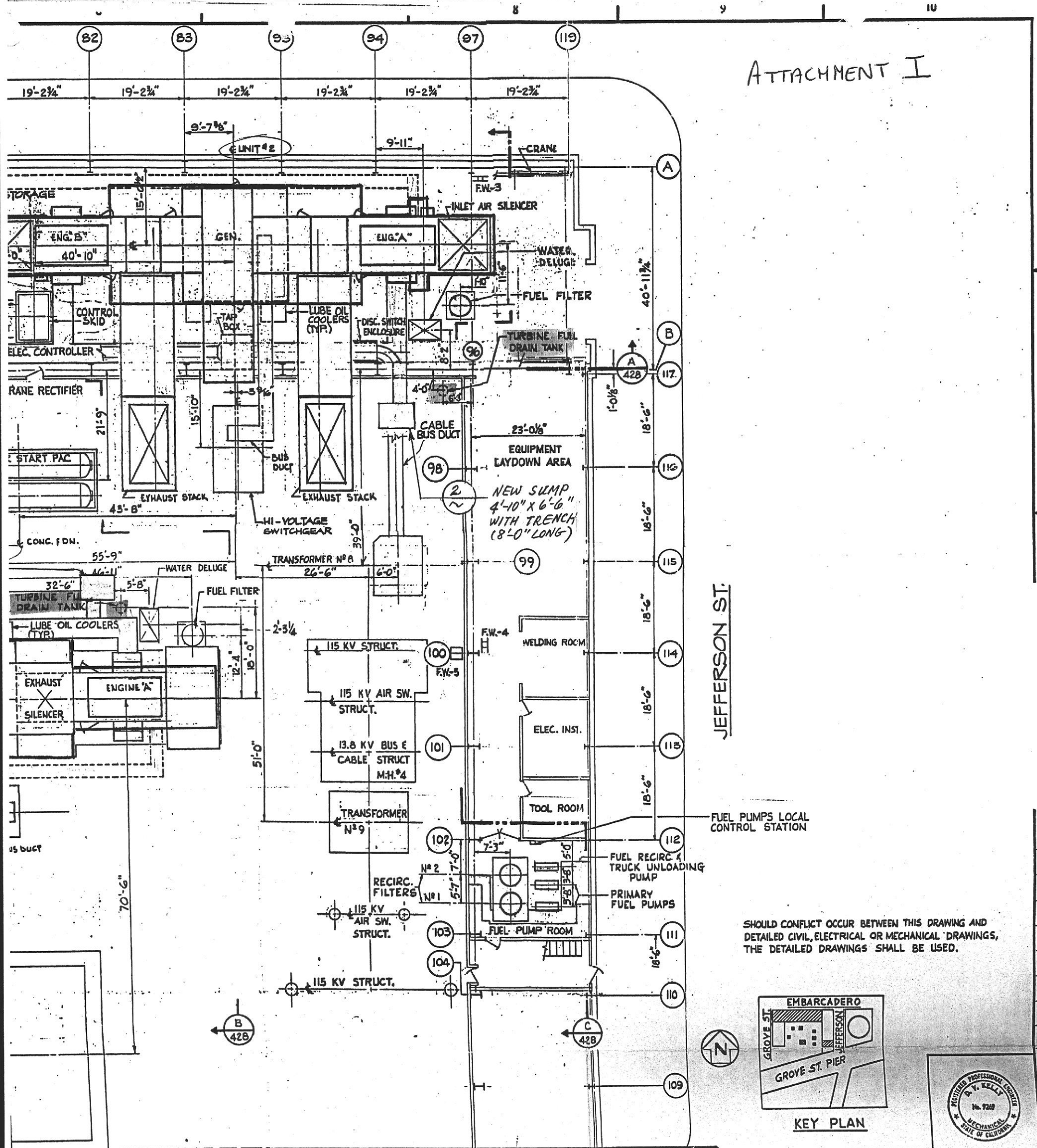
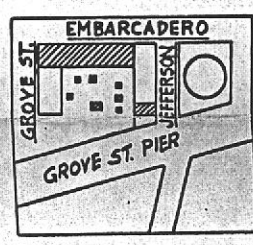


ATTACHMENT I



JEFFERSON ST.

SHOULD CONFLICT OCCUR BETWEEN THIS DRAWING AND DETAILED CIVIL, ELECTRICAL OR MECHANICAL DRAWINGS, THE DETAILED DRAWINGS SHALL BE USED.

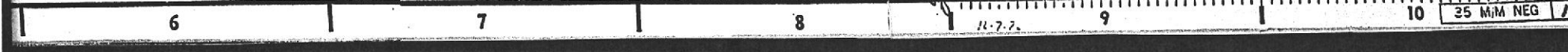


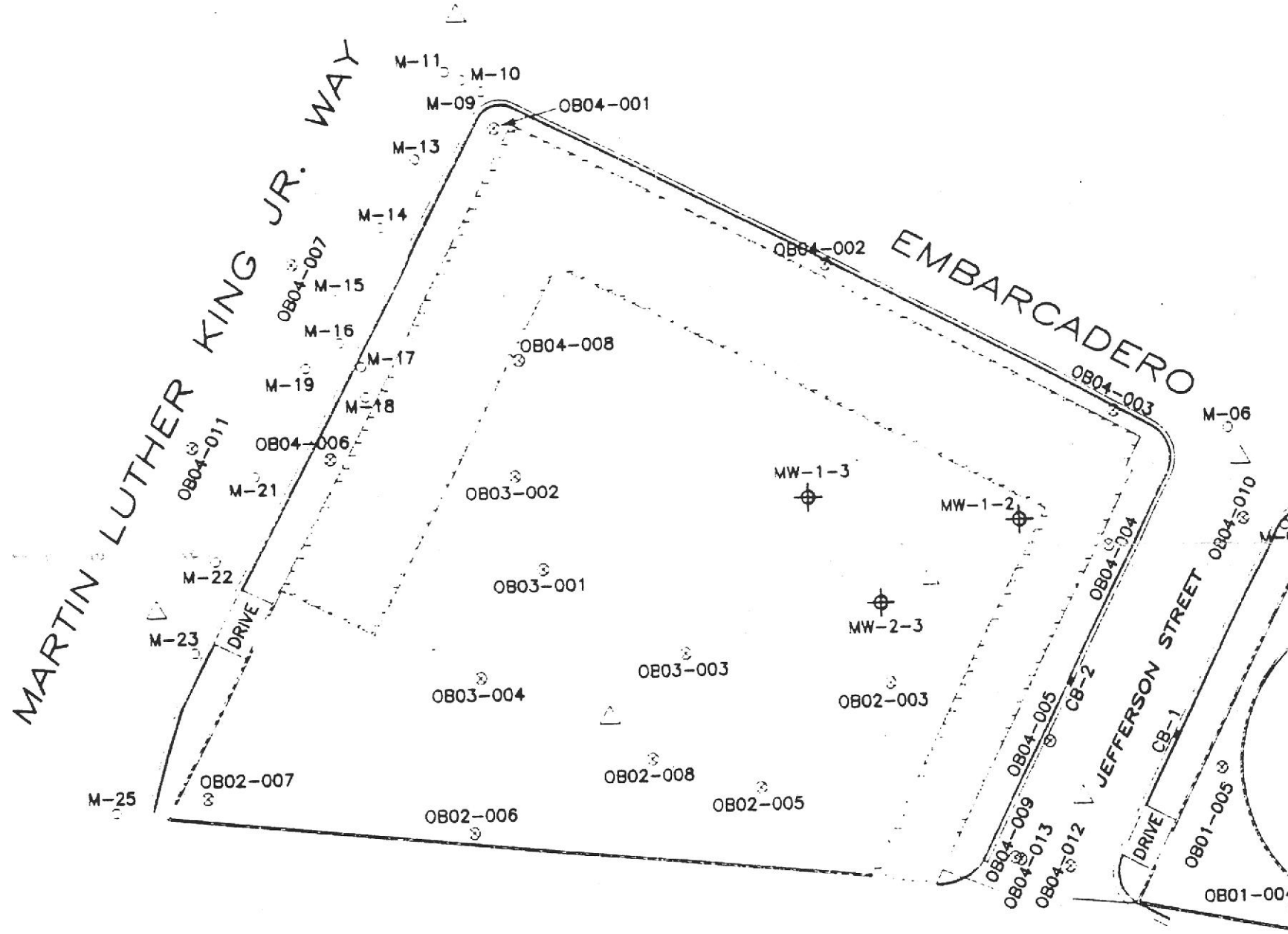
DESCRIPTION	GM/SPEC	BY	CH	RESP. ENG.	SUPV. ENG.	DATE	DESCRIPTION	GM/SPEC	BY	CH	RESP. ENG.	SUPV. ENG.
4-3-78							APPROVED FOR CONSTRUCTION					
8-30-78							ISSUED FOR INFO & COMMENT					

APPROVED BY
 GM 183151
 SUPV. E. TIBBETTS
 DESGN. T. CARTER
 DR. E. E. C.
 CH. MEYVOY
 O.K. 5/25/78
 DATE 5/25/78
 SCALES
 1" = 20'-0"

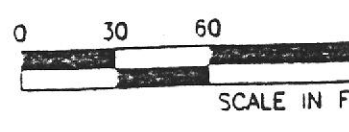
PIPING & MECHANICAL PLAN
 EQUIPMENT LOCATION
 UNITS 1, 2 & 3
 OAKLAND POWER PLANT
 DEPARTMENT OF ENGINEERING
 PACIFIC GAS AND ELECTRIC COMPANY
 SAN FRANCISCO, CALIFORNIA

BILL OF MATERIAL	DRAWING LIST	SUPERSEDES	SUPERSEDED BY	SHEET NO.	SHEETS	CHANGE
				456426	1	





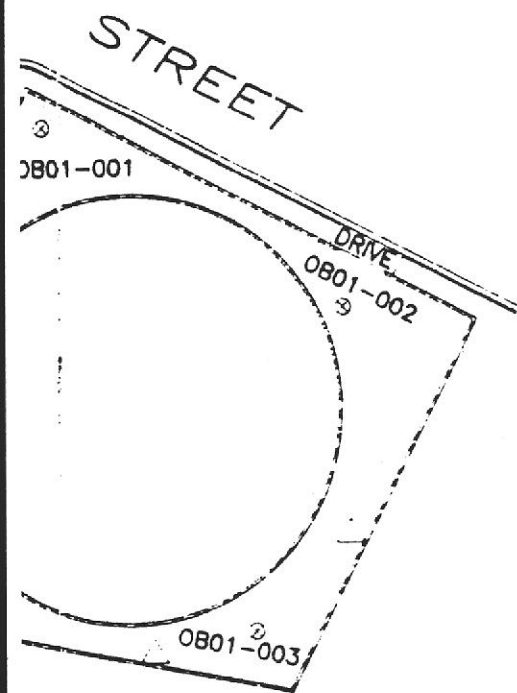
.....Morrow Surveying Control



SCALE IN FEET

hibit
 ared for:
 Daniel GTI

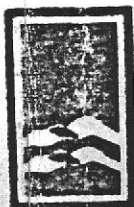
DESCRIPTION	NORTHING	EASTING	ELEV (PVC)	ELEV (STEEL)	ELEV (GROUND)
VW-1-2	2117412.6	6047166.7	10.30	10.79	
VW-1-3	2117424.1	6047076.7	10.35	10.74	
VW-2-3	2117379.2	6047106.7	10.24	10.69	
CB01-001	2117394.6	6047298.6			10.57
CB01-002	2117338.4	6047392.9			10.86
CB01-003	2117239.2	6047364.7			9.92
CB01-004	2117248.0	6047280.9			10.92
CB01-005	2117307.4	6047251.6			9.81
CB02-003	2117346.1	6047110.0			10.48
CB02-005	2117304.1	6047054.6	9.91		10.31
CB02-006	2117288.7	6046934.9			9.93
CB02-007	2117304.9	6046825.7			10.63
CB02-008	2117317.3	6047008.9	10.04		10.26
CB03-001	2117397.0	6046965.5			10.35
CB03-002	2117436.6	6046954.6	10.16		10.51
CB03-003	2117360.3	6047024.1	10.17		10.53
CB03-004	2117352.4	6046938.9	9.60		9.99
CB04-001	2117581.4	6046948.9			9.63
CB04-002	2117521.0	6047085.9			10.66
CB04-003	2117457.4	6047208.1			10.17
CB04-004	2117401.0	6047204.7			9.81
CB04-005	2117320.2	6047177.9			8.92
CB04-006	2117445.2	6046878.4			9.95
CB04-007	2117526.2	6046863.9	9.45		9.72
CB04-008	2117484.5	6046957.3			10.53
CB04-009	2117272.8	6047162.0			9.03
CB04-010	2117411.0	6047263.1	9.45		9.83
CB04-011	2117451.0	6046822.2	9.28		9.59
CB04-012	2117268.6	6047185.6	9.10		9.28
CB04-013	2117272.0	6047164.6	8.88		9.01
CB-1	2117321.2	6047232.7			8.61
CB-2	2117345.0	6047186.7			8.60
M-05	2117407.9	6047280.6			10.07
M-06	2117449.3	6047257.3			10.44
M-09	2117596.7	6046943.8			9.33
M-10	2117601.7	6046935.8			9.78
M-11	2117605.1	6046928.9			10.03
M-13	2117569.2	6046916.2			9.95
M-14	2117541.1	6046900.4			10.06
M-15	2117511.6	6046881.4			10.13
M-16	2117493.2	6046882.9			9.79
M-17	2117483.2	6046891.6			9.79
M-18	2117470.7	6046893.2			9.98
M-19	2117482.8	6046868.9			9.93
M-21	2117438.5	6046847.4			10.07
M-22	2117403.2	6046830.8			10.04
M-23	2117365.2	6046821.6			9.77
M-25	2117299.7	6046787.4			10.82



GRID BASED ON NAD 83 DATUM.
 ELEVATIONS BASED ON U.S.G.S. BENCHMARK "PORT 2-1936"



Pacific Gas & Electric
 Oakland Powerplant
 Oakland
 Alameda County
 California

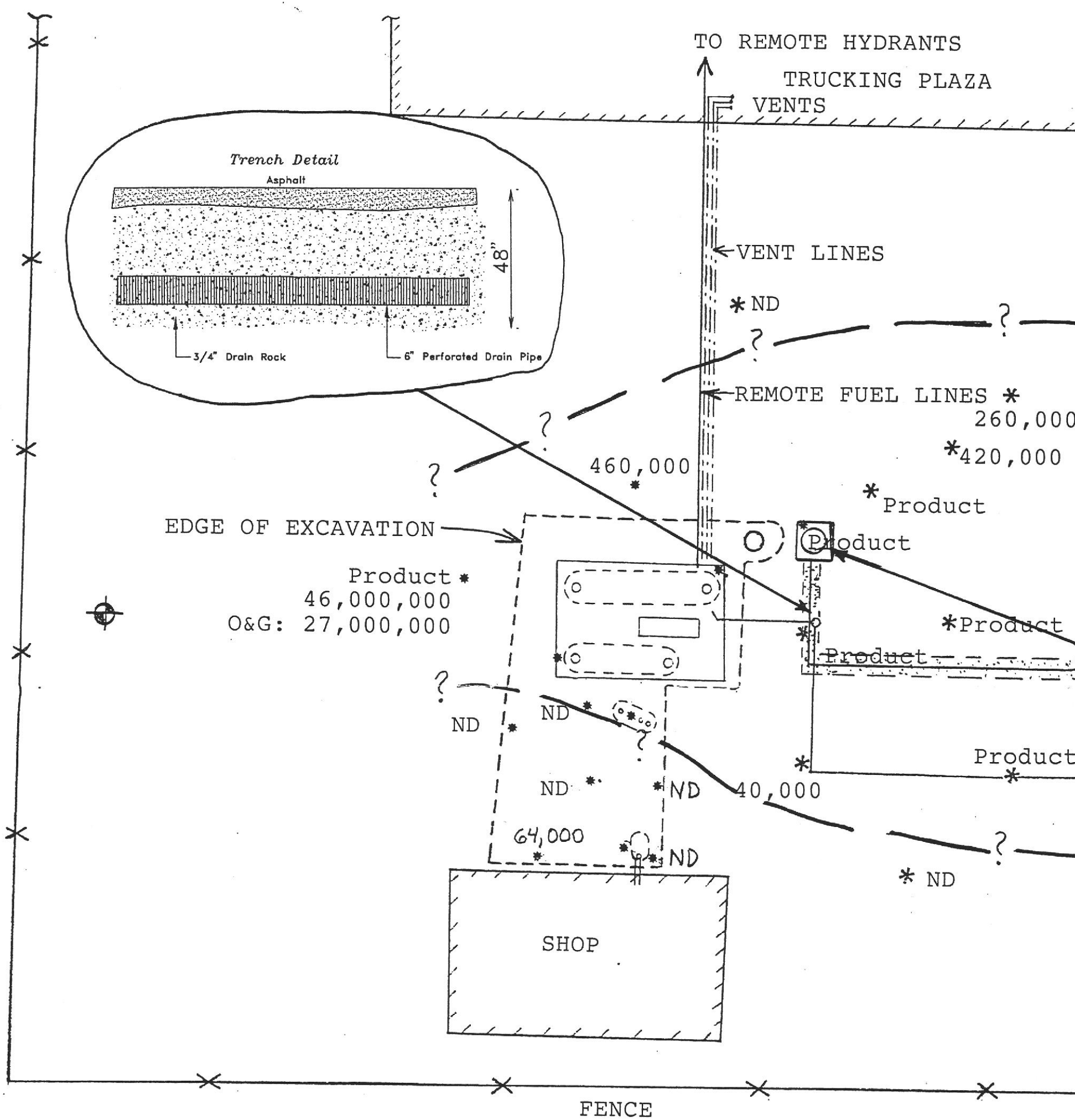


Morrow
 Surveying

1450 Harbor Boulevard
 Suite D
 West Sacramento, CA 95691
 (916) 372-8124

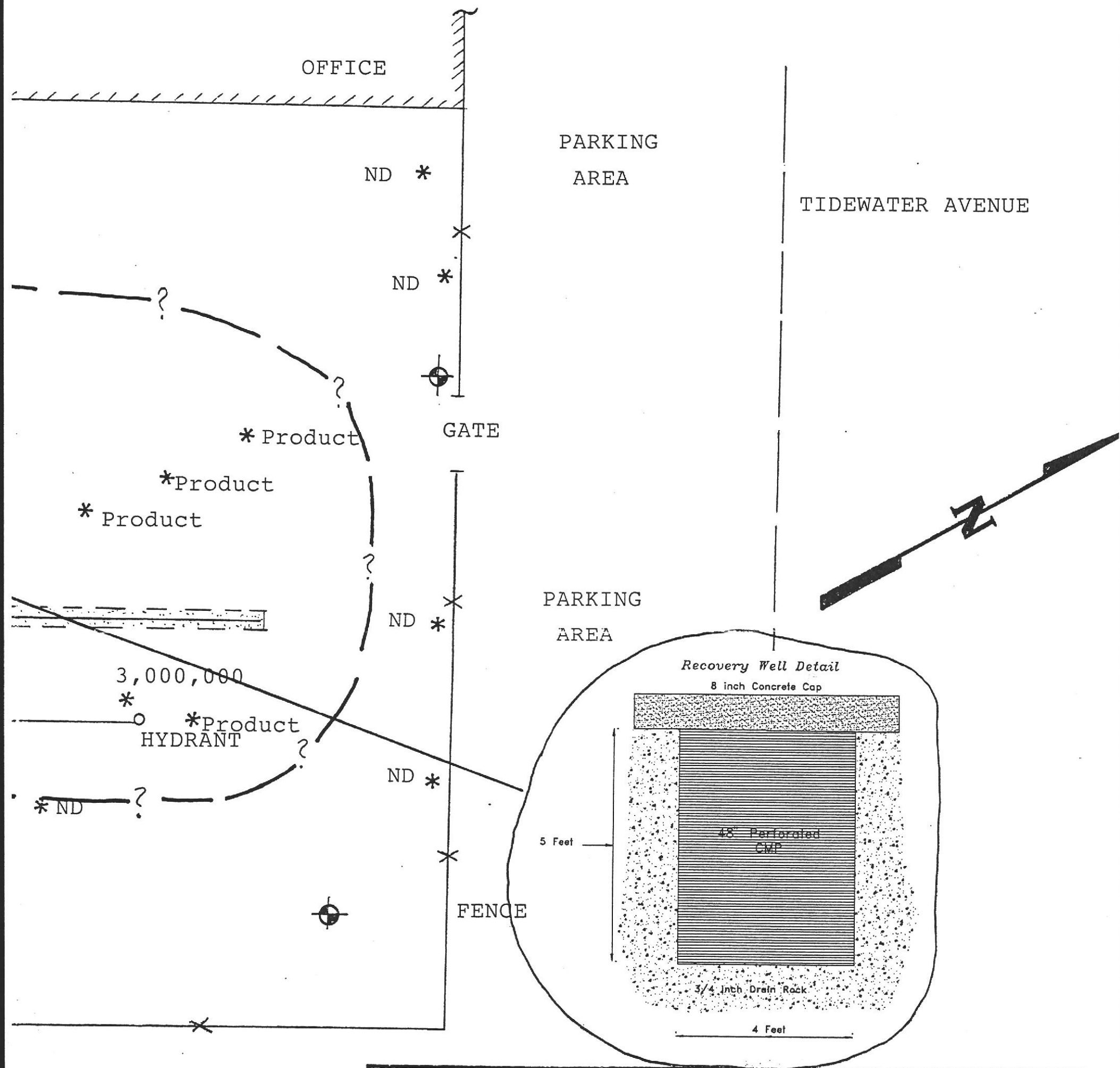
Da
 Sc
 Sh
 Re
 Bo
 Dr





* - SAMPLE LOCATIONS WITH TPH AS DIESEL CONCENTRATIONS IN PPB

⊕ - PROPOSED GROUNDWATER MONITORING WELLS



Gen-Tech Environmental

SCALE:	APPROVED BY:	DRAWN BY <i>my</i>
DATE:	DIESEL CONTAMINATION	REVISED
DISALVO TRUCKING 4919 TIDEWATER AVENUE OAKLAND, CALIFORNIA		
		DRAWING NUMBER PLATE 4

HAZMAT
REC'D
94 APR 13 PM 3:11