



Anne Conner
Sr. Project Manager
Environmental Remediation

3401 Crow Canyon Rd.
San Ramon, CA 94583

925.415.6381 direct
925.415.6852 fax
APB1@pge.com

May 1, 2014

Mr. Jerry Wickham
Hazardous Materials Specialist
Alameda County Environmental Health Department
Division of Environmental Protection
1131 Harbor Way Parkway, 2nd Floor
Alameda, CA 94502-6577

Subject: Corrective Action Plan Implementation Status Update
Pacific Gas and Electric Company, Oakland General Construction Yard
4930 Coliseum Way, Oakland, California

Dear Mr. Wickham:

Please find attached the letter entitled *Correction Action Plan Implementation Status Update, Pacific Gas & Electric Company (PG&E), Oakland General Construction Yard, 4930 Coliseum Way, Oakland, California*, dated May 1, 2014 prepared by AMEC on behalf of PG&E. The letter includes a request to defer the replacement of the asphalt cap until 2015 and also a proposal to abandon several of the groundwater monitoring wells on the property.

If you have any questions regarding this document, please contact Kathleen Isaacson (PG&E project manager) at (415) 392-3875.

Sincerely,

A handwritten signature in purple ink that reads 'Anne Conner'.

Anne Conner
Sr. Project Manager
PG&E Environmental Remediation

Enclosure



May 1, 2014

Project 013045007G.00005

Ms. Kathleen Isaacson
Consultant Project Manager
WAU & Company
400 Montgomery Street, Suite 1100
San Ramon, California 94104

Subject: Corrective Action Plan Implementation Status Update

Pacific Gas and Electric Company
Oakland General Construction Yard
4930 Coliseum Way
Oakland, California

Dear Ms. Isaacson:

At your request, AMEC Environment & Infrastructure, Inc. (AMEC) has prepared the following recommendations regarding the implementation of the Corrective Action Plan (CAP) and proposed monitoring well destruction at the Pacific Gas and Electric (PG&E) Oakland General Construction Yard, located at 4930 Coliseum Way, Oakland, California (the Site; Figure 1).

Corrective Action Plan Implementation

AMEC prepared a July 2, 2012 CAP for the site that was approved by the Alameda County Environmental Health Department (ACEH) in a September 27, 2012 letter. Implementation of the CAP was scheduled for 2014, contingent upon completion of long-term facility activities. These activities have been completed; however, PG&E is requesting approval of a revised CAP implementation start date of 3rd quarter 2015. This start date is based on recent improvements to the asphalt cap in 2013, which are described below.

In September 2013, PG&E conducted maintenance of the asphalt surface. The majority of the inspected asphalt cap area was slurry sealed and pavement was replaced in an area outside of the asphalt cap boundary. Attachment B (attached) of the December 2013 Asphaltic Concrete Cap Inspection Report presents the Site figure for the 2013 inspection results with before and after photographs from the 2012 and 2013 inspection to demonstrate the changes over the year and the condition of the sealed areas. In one area where substantial pavement failure (alligator cracking) had been noted in 2012, the asphalt surface has been removed and replaced with new pavement (see photographs 12A and 12B, Attachment B).

PG&E requests that no corrective action be implemented until 2015 because of these improvements to the asphalt surface. PG&E will inspect the integrity of the asphalt cap in December 2014 as part of the deed restriction's requirements for annual inspection and documentation. Following inspection of the asphalt cap, PG&E will discuss with ACEH the need to implement the CAP in 2015 or request delay for an additional year.

AMEC Environment & Infrastructure, Inc.
2101 Webster Street, 12th Floor
Oakland, California 94612-3066
USA
Tel (510) 663-4100
Fax (510) 663-4141
amec.com

Ms. Kathleen Isaacson
Pacific Gas and Electric Company
May 1, 2014
Page 2

Monitoring Well Destruction

Currently there are seven groundwater monitoring wells (OW-1, OW-2, OW-4, OW-5, OW-6, OW-7, and OW-8) at the Site (Figure 2). Three wells (OW-2, OW-5, and OW-8) were sampled during a January 2011 site investigation, but since that time no on-site groundwater monitoring wells have been gauged or sampled. ACEH concurred with PG&E's request to cease groundwater monitoring at the Site following the 2011 sampling because data collected during the recent groundwater monitoring events indicated limited to no groundwater impacts from the site's former USTs and gas holder.

PG&E understands that the hydraulically up-gradient Learner property to the north of the Site continues to conduct environmental investigations associated with a release of solvents to the subsurface on their property. Because of this ongoing off-site investigation effort, ACEH requests that at least one existing groundwater monitoring well remain on the site in the event it may benefit the Learner property's environmental investigation. PG&E requests:

- (1) Destruction of monitoring wells OW-1, OW-2, OW-4, OW-5, and OW-8. The monitoring wells OW-2, OW-5, and OW-8 are located in the asphalt cap boundary and we prefer their destruction prior to the 2015 remedial re-pavement.
- (2) Re-evaluation of destruction of monitoring wells OW-6 and OW-7 annually. Monitoring wells OW-6 and OW-7 are located in the northernmost corner of the site, the nearest to the Learner Property, and may serve to monitor groundwater constituents migrating onto the site. PG&E requests evaluating the option of destruction annually with ACEH.

Following ACEH's response and approval we will prepare to implement the above mentioned activities and obtain the required permits.

Please contact the undersigned if you have any further questions.

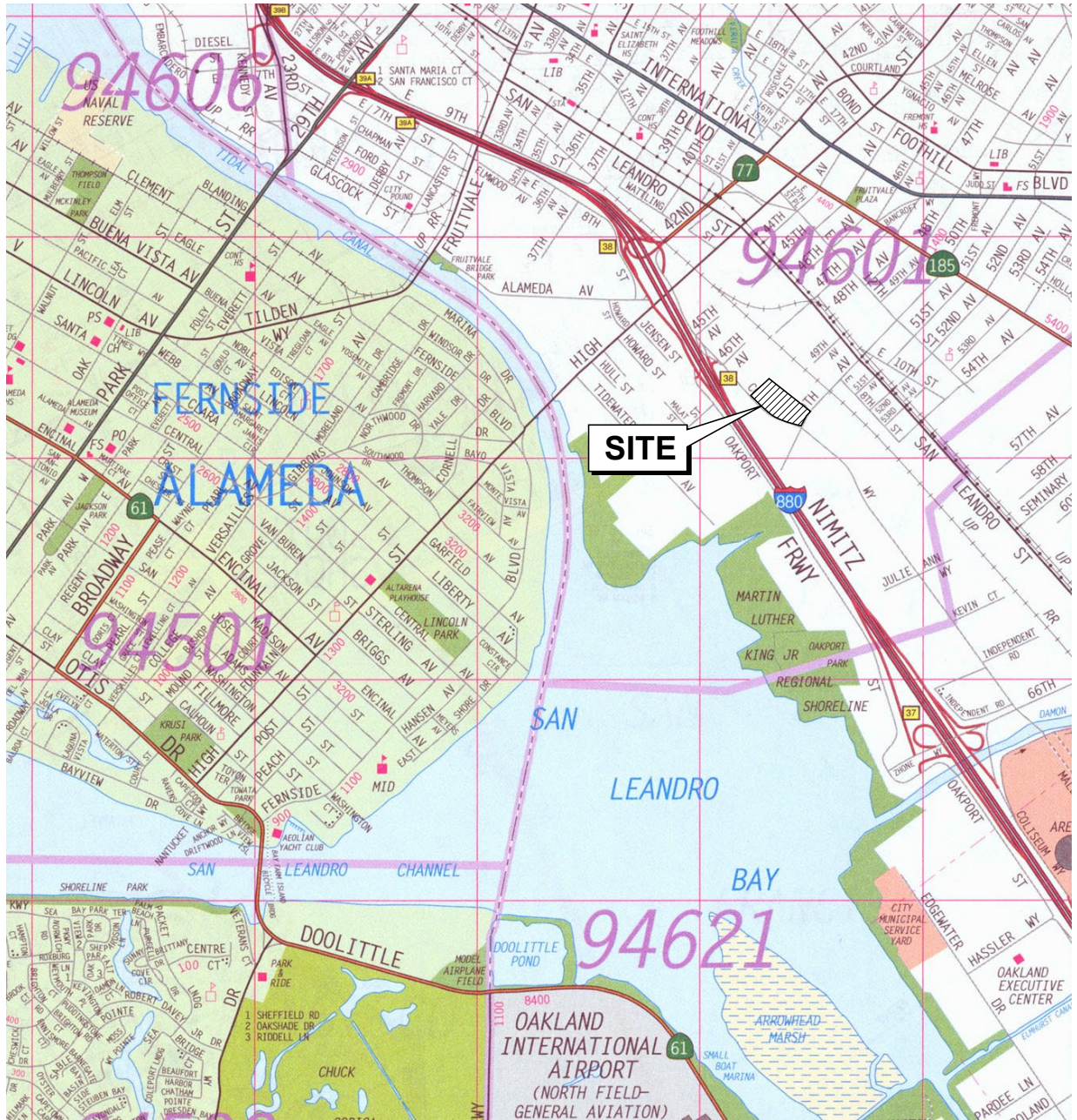
Sincerely yours,
AMEC Environment & Infrastructure, Inc.



Yemia Hashimoto, CHG
Senior Hydrogeologist
Direct Tel.: (510) 663-4210
E-mail: yemia.hashimoto@amec.com

YH/cpr
x:\13000s\13045.007g\3000\2014 status of cap work_050114\01_oakland_gcy_update ltr.docx

Attachments: Figure 1 Site Location Map
Figure 2 Site Map
December 2013 Asphaltic Concrete Cap Inspection Report Appendix B



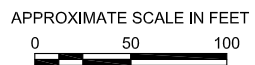
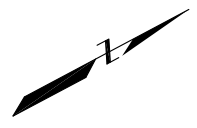
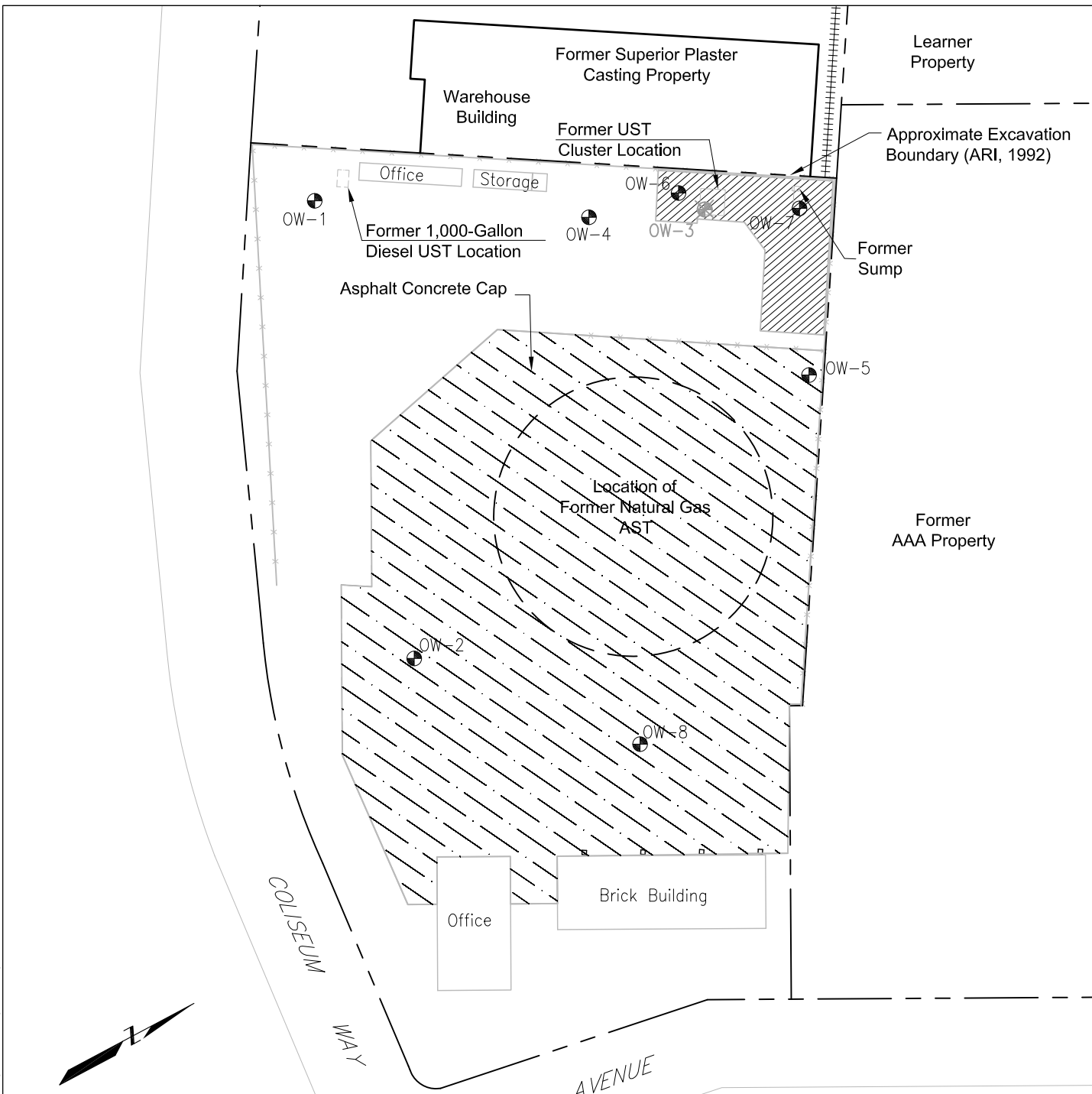
Base map from The Thomas Guide, 2007 Alameda and Contra Costa Counties Edition. Reproduced with permission granted by THOMAS BROS. MAPS®. This map is copyrighted by THOMAS BROS. MAPS®. It is unlawful to copy or reproduce all or any part thereof, whether for personal use or resale, without permission. All rights reserved.

S:\130001\3045\007.F\Task_02\11_1108_ASIRL_fig_01(01)_SLM.ai



SITE LOCATION MAP Pacific Gas & Electric Company Oakland General Construction Yard 4930 Coliseum Way Oakland, California		
By: TK	Date: 11/30/2011	Project No. 13045.007.F
		Figure 1

Plot Date: 11/30/11 - 10:50am. Plotted by: kristin.uber
 Drawing Path: S:\13000\13045\13045.007\F1ask_02\11_1108_ASI\A1. Drawing Name: _fig_02.dwg



EXPLANATION

- Groundwater Monitoring Well
- Destroyed Groundwater Monitoring Well

- Approximate Property Boundary
- Railroad Spur

ABBREVIATIONS

- AST Aboveground Storage Tank
- UST Underground Storage Tank

NOTES

1. Well locations are approximate.
2. Base map from CCS Environmental Services, Inc., 2005, Groundwater Monitoring Report, PG&E Oakland General Construction Yard, Oakland, California.

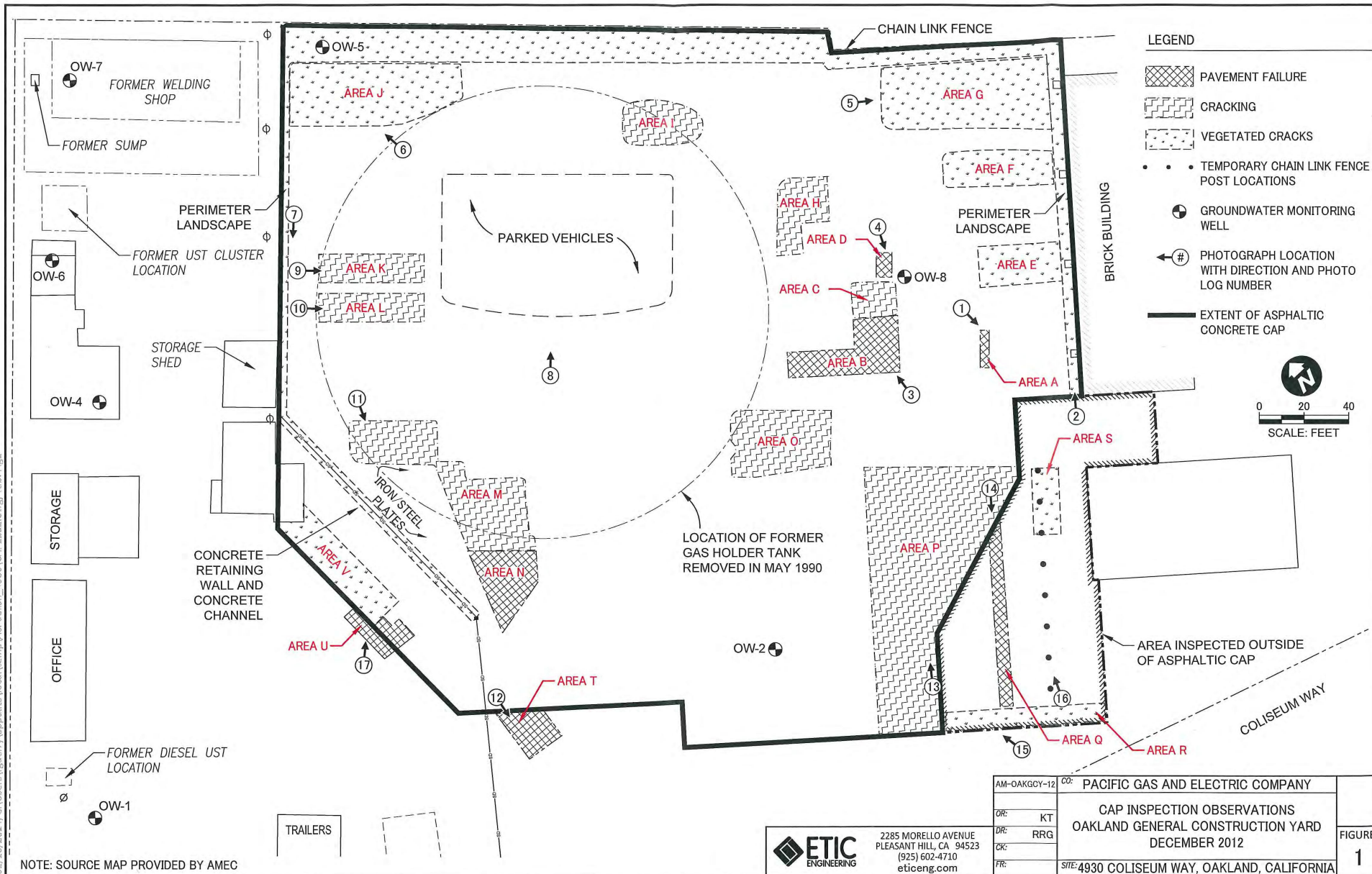
<p>SITE MAP Pacific Gas & Electric Company Oakland General Construction Yard 4930 Coliseum Way, Oakland, California</p>		
By: TK	Date: 11/30/2011	Project No. 13045.007.F
		Figure 2

ATTACHMENT B

Cap Inspection 2012 and 2013 Photo Comparison PG&E Oakland General Construction Yard Oakland, California

This attachment presents a side by side comparison of photos taken during the 2012 and 2013 cap inspections. The photos on the left were taken December 20, 2012 and those on the right were taken December 5, 2013. Figure 1 from the 2012 cap inspection report (ETIC, 2012) is shown for reference; it identifies the location and direction in which the photos were taken.

ATTACHMENT B



C:\Users\jgurry\AppData\Local\Temp\AcPublish_49336\CAP1212.dwg, Tab: Fig1

NOTE: SOURCE MAP PROVIDED BY AMEC

ETIC ENGINEERING
 2285 MORELLO AVENUE
 PLEASANT HILL, CA 94523
 (925) 602-4710
 eticeng.com

AM-OAKGCY-12	CO: PACIFIC GAS AND ELECTRIC COMPANY	FIGURE: 1
DR: KT	CAP INSPECTION OBSERVATIONS	
DIR: RRG	OAKLAND GENERAL CONSTRUCTION YARD	
CHK:	DECEMBER 2012	
FR:	SITE: 4930 COLISEUM WAY, OAKLAND, CALIFORNIA	

ATTACHMENT B

Cap Inspection 2012 and 2013 Photo Comparison PG&E Oakland General Construction Yard Oakland, California



Photographs 1A and 1B: Pavement failure in Area A, 2012 on the left. The area was not visible due to materials storage in 2013 (the 2013 photo was taken facing east).

ATTACHMENT B

Cap Inspection 2012 and 2013 Photo Comparison PG&E Oakland General Construction Yard Oakland, California



Photographs 2A and 2B: Vegetation along the southeastern side of the cap. In 2013, the foreground has been slurry sealed. Dead vegetation is present along the brick building and under the storage rack.

ATTACHMENT B

Cap Inspection 2012 and 2013 Photo Comparison PG&E Oakland General Construction Yard Oakland, California



Photographs 3A and 3B: Cracking and pavement failure in Areas B and C of the 2012 report. In 2013, the area has been sealed.

ATTACHMENT B

Cap Inspection 2012 and 2013 Photo Comparison PG&E Oakland General Construction Yard Oakland, California



Photographs 4A and 4B: Pavement failure in Area D of the 2012 report. In 2013, the area has been sealed.

ATTACHMENT B

Cap Inspection 2012 and 2013 Photo Comparison PG&E Oakland General Construction Yard Oakland, California



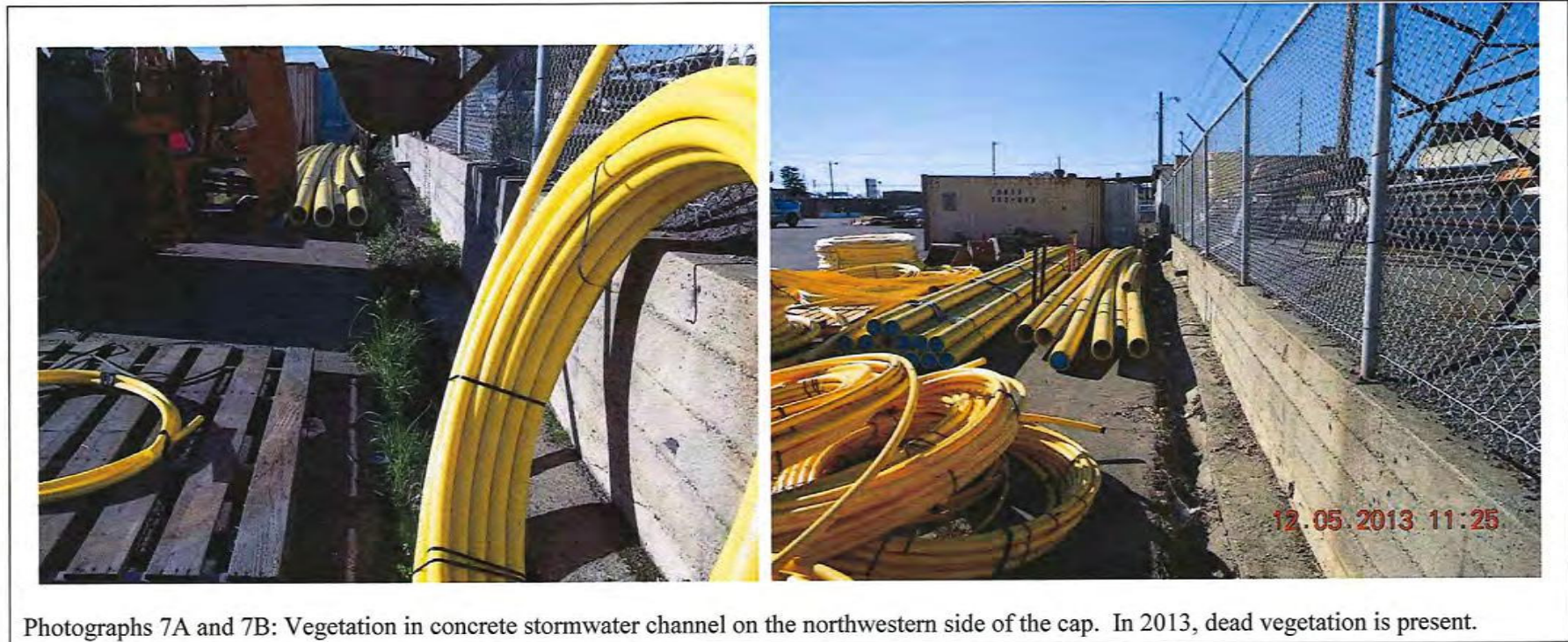
ATTACHMENT B

Cap Inspection 2012 and 2013 Photo Comparison PG&E Oakland General Construction Yard Oakland, California



ATTACHMENT B

Cap Inspection 2012 and 2013 Photo Comparison PG&E Oakland General Construction Yard Oakland, California



ATTACHMENT B

Cap Inspection 2012 and 2013 Photo Comparison PG&E Oakland General Construction Yard Oakland, California



Photographs 8A and 8B: Cracking in the central area of the cap. In 2013, slurry seal has been applied over the cracks.

ATTACHMENT B

Cap Inspection 2012 and 2013 Photo Comparison
PG&E Oakland General Construction Yard
Oakland, California



Photographs 9A and 9B: Cracking in Area K of the 2012 report. In 2013, the area has been sealed.

ATTACHMENT B

Cap Inspection 2012 and 2013 Photo Comparison PG&E Oakland General Construction Yard Oakland, California



ATTACHMENT B

Cap Inspection 2012 and 2013 Photo Comparison PG&E Oakland General Construction Yard Oakland, California



Photographs 11A and 11B: Cracking and weathered surface in Area M of the 2012 report. In 2013 some of the area has been sealed.

ATTACHMENT B

Cap Inspection 2012 and 2013 Photo Comparison PG&E Oakland General Construction Yard Oakland, California



Photographs 12A and 12B: Pavement failure in Area T of the 2012 report. In 2013, the area has been repaved.

ATTACHMENT B

Cap Inspection 2012 and 2013 Photo Comparison
PG&E Oakland General Construction Yard
Oakland, California



Photographs 13A and 13B: Cracking in Area P of the 2012 report. In 2013, the area has been sealed.

ATTACHMENT B

Cap Inspection 2012 and 2013 Photo Comparison
PG&E Oakland General Construction Yard
Oakland, California



ATTACHMENT B

Cap Inspection 2012 and 2013 Photo Comparison PG&E Oakland General Construction Yard Oakland, California



ATTACHMENT B

Cap Inspection 2012 and 2013 Photo Comparison
PG&E Oakland General Construction Yard
Oakland, California



ATTACHMENT B

Cap Inspection 2012 and 2013 Photo Comparison PG&E Oakland General Construction Yard Oakland, California

