



ST 10 3566
JMS

December 26, 1995

ENV - STUDIES, SURVEYS & REPORTS

Former Texaco Service Station
1127 Lincoln Avenue, Alameda, CA
EBMUD Account No. 502-74621

Mr. Raymond Maxwell
East Bay Municipal Utility District
Source Control Division, M.S. 702
P.O. Box 24055, 375 11th Street,
Mail slot #702
Oakland, California 94623

Dear Mr. Maxwell:

Enclosed is the *Semi-Annual Self-Monitoring Report Summary*, dated December 8, 1995, for the subject site.

Regarding the above-referenced report,

I certify under penalty of law that, to the best of my knowledge, this document and all attachments were prepared under my direction or supervision in accordance with a system designed to assure that qualified personnel properly gather and evaluate the information submitted. Based on my inquiry of the person or persons who manage the system, or those persons directly responsible for gathering information, the information is, to the best of my knowledge and belief, true, accurate, and complete. I am aware that there are significant penalties for submitting false information, including the possibility of fine and imprisonment for knowing violations.

Any questions regarding this report may be directed to me at (510) 236-9139.

Best Regards,

Karen E. Petryna
Project Coordinator
Texaco Environmental Services

KEP:eg
P:\COVERS\KEPCVRS\1127ASMR.CVR

Enclosure

cc	Mr. Thomas Peacock Alameda County Hazardous Materials 1731 Harbor Bay Pky Alameda, CA 94502-6577	Mr. Tim Ross Kaprealian Engineering Inc 2401 Starwell Dr., Suite 400 Concord, CA 94520
----	--	---

RRZtelnet:ova enclosure

RAOF:le-L CPFile.v enclosure

RR 23

95 DEC 28 PM
ENVIRONMENTAL
PROTECTION

EBMUD PERMIT ACCOUNT NO. 502-74621
SELF MONITORING REPORT SUMMARY
DATE SAMPLED: MONTHLY JULY 05,1995 THRU NOVEMBER 15,1995

Reporting Period: 07/01/95 to 11/30/95
 Permittee: Texaco Environmental Services
 Site Name: Former Texaco Service Station
 Site Address: 1127 Lincoln Ave., Alameda, CA

Due Date: 12/31/95
 EBMUD Permit: #502-74621

Company Contact: Karen Petryna
 Mailing Address: 108 Cutting Boulevard
Richmond, CA 94804
 Phone Number: (510) 236-9139

Consultant: Groundwater Technology, Inc.
 Address: 1401 Halyard Drive, Suite 140
West Sacramento, CA 95691
 Contact: Brian Garber
 Phone Number: (916) 372-4700

Any violation of waste discharge requirement during this period? Yes _____ No X
 If yes, include attachment describing violation and corrective actions taken.

GROUNDWATER DISCHARGE DATA

Sample Location	Date	Flow Rate (gpm)	Totalizer Readings (gallons)	Cumulative Volume (gallons)	Sample Location	Date	Flow Rate (gpm)	Totalizer Readings (gallons)	Cumulative Volume (gallons)
Effluent	07/05/95	8.0	1473969	2137165	W-2	07/05/95	Cycled Off	144448	684195
	08/02/95	8.4	1598830	2262026		08/02/95	NA	206909	746656
	09/28/95	6.8	1642252	2305448		09/28/95	Cycled Off	227341	767688
	10/31/95	7.1	1658299	2321495		10/31/95	NA	5356.86	545103.86
	11/15/95	6.8	1708973	2373169		11/15/95	NA	28488.1	568235.1
MW-5	07/05/95	1.29	216909	513400	AUX	07/05/95	NA	NA	NA
	08/02/95	1.25	267215	563706		08/02/95	NA	NA	NA
	09/28/95	4.35	7218.49	303709.5		09/28/95	NA	NA	NA
	10/31/95	4.27	3994.92	300485.9		10/31/95	NA	NA	NA
	11/15/95	4.05	21883.4	318374.4		11/15/95	NA	NA	NA
W-1	07/05/95	Cycled Off	126488	161002					
	08/02/95	1.43	152232	186746					
	09/28/95		177579	196722					
	10/31/95	4.51	2781.9	199503.9					
	11/15/95	5.20	15081.6	214584.9					

Flow Rate for this reporting period: 7.42 gpm

Total Volume Discharged Groundwater for this reporting period: 236004 gallons

* Batteries Ordered

SEMI-ANNUAL WATER REPORTING

Sample Location	Date	TPH-G (ppb)	Benzene (ppb)	Toluene (ppb)	Ethylbenzene (ppb)	Xylenes (ppb)
Influent						
	07/05/95	1,100	100	13	3.6	56
	08/02/95	1,000	220	15	4.9	60
	08/31/95	1,400	190	27	110	120
	09/28/95	290	31	3.6	16	18
	10/31/95	1,100	210	26	5.4	75
	11/15/95	130	4.5	1.4	0.59	1.9
Carbon Inf						
	07/05/95	290	27.00	6.0	1.3	17.0
	08/02/95	61	0.94	1.5	ND	ND
	08/31/95	900	98	73	14	150
	09/28/95	80	12	4.0	1.2	8.9
	10/31/95	ND	9	1.1	0.91	3.5
	11/15/95	62	7.5	2.2	1.3	4.6
BT-1						
	07/05/95	250	21	4.9	1.0	13
	08/02/95	67	6.3	2.0	ND	3.1
	08/31/95	940	120	75	20	150
	09/28/95	ND	ND	ND	ND	ND
	10/31/95	50	0.83	N/D	0.89	2.5
	11/15/95	ND	ND	ND	ND	ND
Effluent						
	07/05/95	110	5.9	1.8	ND	2.4
	08/02/95	64	1.7	0.99	ND	0.79
	08/31/95	ND	ND	ND	ND	ND
	09/28/95	ND	ND	ND	ND	ND
	10/31/95	ND	ND	ND	ND	ND
	11/15/95	ND	ND	ND	ND	0.83
Discharge Limit		50	1.0	5.0	5.0	5.0

Explanation:

TPG-G = Total petroleum hydrocarbons-as-gasoline
 -- = Not Analyzed

gpm = Gallons per minute
 pgd = Gallons per day
 NM = Not measured
 ppb = Parts per billion

N/A = Not applicable
 umhos/cm = Micromhos per centimeter
 g/day = Grams per day
 ND = Not detected

Note: Certified analytical laboratory reports enclosed.

Company : Groundwater Technology, Inc.

Signature: _____

Brian H. Garber
 Project Manager

Date: _____

**SITE VISITATION FORM
FOR
WASTEWATER DISCHARGE SAMPLING
SYSTEM OPERATION AND MAINTENANCE**

1127 LINCOLN ALAMEDA
Site Address

Sampled By: STEVEN STROM

Date: 7-5-95

SYSTEM CHECK / READINGS

If Applicable	Yes	No	N/A
Is System Operational	✓		
2nd Contain. Float Switch Working	✓		
Adjust Flow Rate		✓	
Filter Checked and Cleaned	✓		
Strainer Checked and Cleaned	✓		
Check/Add Water Conditioner		✓	
Calibrate LEL			✓

	N/A	Field Data
Effluent Totalizer (gal)		1473969 @ 15:27
Effluent Flow Rate (gpm)		8 gpm
Aeration Pressure (psi)		8
Bag Filter INFL Pressure (psi)		0
Bag Filter EFFL Pressure (psi)	✓	
Carbon Vessel #1 Pressure (psi)		4
Carbon Vessel #2 Pressure (psi)		4
Air Compressor Pressure (psi)	✓	
Hour Meter (hours)	✓	

SYSTEM SAMPLING

— NONE —

	Sample Point	Sample Point	Sample Point	Sample Point
Temperature (F)				
pH (units)				
Dissovlyed O ₂ (ppm)				
Electrical Conductivity				

WELL READINGS

Well # MW-5 Well # W-1 Well # W-2 Well # AUX

Flow Totalizer (gpm)	216909	126488	144448	NA
Flow Rate (gpm)	1.29	CYCLED OFF	CYCLED OFF	
Hour Meter (hours)			144448	
DTW from TOC (ft)				

SITE VISITATION FORM
FOR
WASTEWATER DISCHARGE SAMPLING
SYSTEM OPERATION AND MAINTENANCE

1127 LINCOLN ALAMEDA
Site Address

Date: 8-2-95

Sampled By: STEVEN STROM

SYSTEM CHECK / READINGS

If Applicable	Yes	No	N/A
Is System Operational	✓		
2nd Contain. Float Switch Working	✓		
Adjust Flow Rate		✓	
Filter Checked and Cleaned *	✓		
Strainer Checked and Cleaned	✓		
Check/Add Water Conditioner		✓	
Calibrate LEL			✓

	N/A	Field Data
Effluent Totalizer (gals)		1598830
Effluent Flow Rate (gpm)		8.4
Aeration Pressure (psi)		Ø
Filter INFL Pressure (psi)		Ø
Filter EFFL Pressure (psi)	✓	
Carbon Vessel #1 Pressure (psi)		8
Carbon Vessel #2 Pressure (psi)		6
Air Compressor Pressure (psi)	✓	
Hour Meter (hours)	✓	

SYSTEM SAMPLING

System sampled Y N *SEE SITE VIST FORM FOR SAMPLE PTS.*

Monthly Qtrly Semi-Ann Annual

	Sample Point	Sample Point	Sample Point	Sample Point
Temperature (F)				
pH (units)				
Dissovled O ₂ (ppm)				
Electrical Conductivity				

WELL READINGS

Well # MW-5 Well # W-1 Well # W-2 Well # AUX

Flow Totalizer (gals)	267215	152232	206909	Ø
Flow Rate (gpm)	1.25	1.43	NA	Ø
Hour Meter (hours)				
DTW from TOC (ft)				

**SITE VISITATION FORM
FOR
WASTEWATER DISCHARGE SAMPLING
SYSTEM OPERATION AND MAINTENANCE**

1127 LINCOLN ALAMEDA CA
Site Address

Sampled By: STEVEN STREM

Date: 9/28/95

SYSTEM CHECK / READINGS

If Applicable	Yes	No	N/A
Is System Operational	X		
2nd Contain. Float Switch Working	X		
Adjust Flow Rate		X	
Filter Checked and Cleaned	X		
Strainer Checked and Cleaned	X		
Check/Add Water Conditioner		X	
Calibrate LEL			X

	N/A	Field Data
Effluent Totalizer (gals)		1642 252
Effluent Flow Rate (gpm)		6.8
Aeration Pressure (psi)		Ø
Filter INFL Pressure (psi)		Ø
Filter EFFL Pressure (psi)	✓	
Carbon Vessel #1 Pressure (psi)		9 psi
Carbon Vessel #2 Pressure (psi)		—
Air Compressor Pressure (psi)	✓	
Hour Meter (hours)		

SYSTEM SAMPLING

System sampled Y ___ N ___

Monthly Qtrly Semi-Ann Annual

	Sample Point	Sample Point	Sample Point	Sample Point
Temperature (F)				
pH (units)				
Dissovled O ₂ (ppm)				
Electrical Conductivity				

WELL READINGS

Well # MW-5 Well # W-1 Well # W-2 Well # AUX

Flow Totalizer (gals)	7218.49	BATTERIES ORDERED	227341	Ø
Flow Rate (gpm)	4.35	—	No ^t ON CYCLE	—
Hour Meter (hours)				
DTW from TOC (ft)				

**SITE VISITATION FORM
FOR
WASTEWATER DISCHARGE SAMPLING
SYSTEM OPERATION AND MAINTENANCE**

1127 LINCOLN ALAMEDA
Site Address

Sampled By: STEVEN STROM

Date: 10/30/95

SYSTEM CHECK / READINGS

If Applicable	Yes	No	N/A
Is System Operational	X		
2nd Contain. Float Switch Working	Y		
Adjust Flow Rate		✓	
Filter Checked and Cleaned	X		
Strainer Checked and Cleaned	X		
Check/Add Water Conditioner		X	
Calibrate LEL			X

	N/A	Field Data
Effluent Totalizer (gals)		1658299
Effluent Flow Rate (gpm)		7.1
Aeration Pressure (psi)		Ø
Filter INFL Pressure (psi)		Ø
Filter EFFL Pressure (psi)	✓	
Carbon Vessel #1 Pressure (psi)		11 psi
Carbon Vessel #2 Pressure (psi)		11 psi
Air Compressor Pressure (psi)	✓	—
Hour Meter (hours)	✓	

SYSTEM SAMPLING

System sampled Y X N

Monthly Qtrly Semi-Ann Annual

	Sample Point	Sample Point	Sample Point	Sample Point
Temperature (F)				
pH (units)				
Dissolved O ₂ (ppm)				
Electrical Conductivity				

WELL READINGS

Well # MW-5 Well # W-1 Well # W-2 Well # AUX

Flow Totalizer (gals)	3994.92	2781.90	5356.86	Ø
Flow Rate (gpm)	4.27	4.51	TA	
Hour Meter (hours)				
DTW from TOC (ft)				

**SITE VISITATION FORM
FOR
WASTEWATER DISCHARGE SAMPLING
SYSTEM OPERATION AND MAINTENANCE**

1127 LINCOLN ALAMEDA

Site Address

Sampled By: STEVEN STREM

Date: 11-15-95

SYSTEM CHECK / READINGS

If Applicable	Yes	No	N/A
System Operational	X		
Contain. Float Switch Working	X		
Adjust Flow Rate		X	
Filter Checked and Cleaned	X		
Strainer Checked and Cleaned	X		
Check/Add Water Conditioner		X	
Calibrate LEL			X

	N/A	Field Data
Effluent Totalizer (gals)		1709973 @ 1255
Effluent Flow Rate (gpm)		6.8
Aeration Pressure (psi)		3.0
Filter INFL Pressure (psi)		73 0
Filter EFFL Pressure (psi)	X	
Carbon Vessel #1 Pressure (psi)		13.0
Carbon Vessel #2 Pressure (psi)		—
Air Compressor Pressure (psi)	X	
Hour Meter (hours)	X	

SYSTEM SAMPLING

System sampled Y ~~N~~

Monthly Qtrly Semi-Ann Annual

	Sample Point	Sample Point	Sample Point	Sample Point
Temperature (F)				
pH (units)				
Dissolved O ₂ (ppm)				
Electrical Conductivity				

WELL READINGS

Well # MW-5 Well # W-1 Well # W-2 Well # AUX

Flow Totalizer (gals)	21883.4	15081.6	28488.1	Ø
Flow Rate (gpm)	4.05	5.20	—	
Hour Meter (hours)				
DTW from TOC (ft)				

ANALYTICAL REPORT

BC Analytical

1085 Shary Circle
Concord, CA 94518
510/825-3894
Fax: 510/825-3924

LOG NO: C95-07-003
Received: 06 JUL 95
Mailed: JUL 18 1995

Mr. Brian Garber
Groundwater Technology, Inc.
1401 Halyard Drive, Suite 140
West Sacramento, California 95691

Purchase Order: 94-1446346+4370

Requisition: 624881450
Project: FKEP1001L

REPORT OF ANALYTICAL RESULTS

Page 1

LOG NO	07-003-1	07-003-2	07-003-3
DATE SAMPLED	05 JUL 95	05 JUL 95	05 JUL 95
SAMPLE DESCRIPTION	Inf	A-Inf	B-BT-1
GROUND WATER			
TPH (8015M.TX)			
Date Analyzed	07/10/95	07/10/95	07/10/95
Dilution Factor, Times	1	1	1
Benzene, ug/L	100	27	21
Toluene, ug/L	13	6.0	4.9
Ethylbenzene, ug/L	3.6	1.3	1.0
Methyl-tert-butylether, ug/L	15	<10	<10
Total Xylene Isomers, ug/L	56	17	13
Carbon Range, .	C6-C12	C6-C12	C6-C12
TPH (Gasoline Range), ug/L	1100	290	250



BC Analytical

1085 Shary Circle
Concord, CA 94518
510/825-3894
Fax: 510/825-3924

LOG NO: C95-07-003

Received: 06 JUL 95

Mr. Brian Garber
Groundwater Technology, Inc.
1401 Halyard Drive, Suite 140
West Sacramento, California 95691

Purchase Order: 94-1446346+4370

Requisition: 624881450
Project: FKEP1001L

REPORT OF ANALYTICAL RESULTS

Page 2

LOG NO	07-003-4
DATE SAMPLED	05 JUL 95
SAMPLE DESCRIPTION	C-Eff
GROUND WATER	
TPH (8015M.TX)	
Date Analyzed	07/10/95
Dilution Factor, Times	1
Benzene, ug/L	5.9
Toluene, ug/L	1.8
Ethylbenzene, ug/L	<0.5
Methyl-tert-butylether, ug/L	<10
Total Xylene Isomers, ug/L	2.4
Carbon Range, .	C6-C12
TPH (Gasoline Range), ug/L	110



B C Analytical

1085 Shary Circle
Concord, CA 94518
510/825-3894
Fax: 510/825-3924

LOG NO: C95-07-003

Received: 06 JUL 95

Mr. Brian Garber
Groundwater Technology, Inc.
1401 Halyard Drive, Suite 140
West Sacramento, California 95691

Purchase Order: 94-1446346+4370

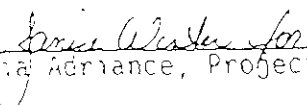
Requisition: 624881450
Project: FKEP1001L

REPORT OF ANALYTICAL RESULTS

Page 3

LOG NO	07-003-5	07-003-6	07-003-7
DATE SAMPLED	05 JUL 95	05 JUL 95	05 JUL 95
SAMPLE DESCRIPTION	Inf	Inf-2	Eff
VAPOR OR AIR			
TPH (8015M.TX)			
Date Analyzed	07/07/95	07/07/95	07/07/95
Dilution Factor, Times	1	1	1
Benzene, mg/M3	1.3	<0.2	<0.2
Toluene, mg/M3	2.0	<0.2	<0.2
Ethylbenzene, mg/M3	0.32	<0.2	<0.2
Methyl-tert-butylether, mg/M3	4.5	<1	<1
Total Xylene Isomers, mg/M3	1.9	<0.2	<0.2
Carbon Range, .	C6-C12	C6-C12	C6-C12
TPH (Gasoline Range), mg/M3	130	<10	<10

Karen Petryna
1127 Lincoln Ave., Alameda
Alameda County


Maria Adnan, Project Manager



MPLES...	SAMPLE DESCRIPTION..	DETERM.....	DATE..... ANALYZED	METHOD.....	EQUIP.	BATCH..	ID.NO
507003*1	Inf	GAS.BTX.TESNC	07.10.95	8015M.TX	516-24	957224	8658
507003*2	A-Inf	GAS.BTX.TESNC	07.10.95	8015M.TX	516-24	957224	8658
507003*3	B-BT-1	GAS.BTX.TESNC	07.10.95	8015M.TX	516-24	957224	8658
507003*4	C-Eff	GAS.BTX.TESNC	07.10.95	8015M.TX	516-24	957224	8658
507003*5	Inf	GAS.BTX.TESNC	07.07.95	8015M.TX	516-20	958138	8658
507003*6	Inf-2	GAS.BTX.TESNC	07.07.95	8015M.TX	516-20	958138	8658
507003*7	Eff	GAS.BTX.TESNC	07.07.95	8015M.TX	516-20	958138	8658

**

Notes: Equipment = BC Analytical identification number for a particular piece of analytical equipment.

ID.NO = BC Analytical employee identification number of analyst.

BC ANALYTICAL

ORDER QC REPORT FOR C9507003

DATE REPORTED : 07/17/95

LABORATORY CONTROL STANDARDS
FOR BATCHES WHICH INCLUDE THIS ORDER

PARAMETER	DATE ANALYZED	BATCH NUMBER	LC RESULT	LT RESULT	UNIT	PERCENT RECOVERY
1. TPH	C507016*1					
Date Analyzed	07.12.95	957224	07/12/95	07/12/95	Date	N/A
Benzene	07.12.95	957224	19.5	20.0	ug/L	98
Toluene	07.12.95	957224	21.0	20.0	ug/L	105
Ethylbenzene	07.12.95	957224	21.1	20.0	ug/L	106
Methyl-tert-butylether	07.12.95	957224	22.2	20.0	ug/L	111
Total Xylene Isomers	07.12.95	957224	65.2	60.0	ug/L	109
TPH (Gasoline Range)	07.12.95	957224	940	1000	ug/L	94
2. TPH	C507017*1					
Date Analyzed	07.13.95	957224	07/13/95	07/13/95	Date	N/A
Benzene	07.13.95	957224	19.3	20.0	ug/L	97
Toluene	07.13.95	957224	21.0	20.0	ug/L	105
Ethylbenzene	07.13.95	957224	21.6	20.0	ug/L	108
Methyl-tert-butylether	07.13.95	957224	22.8	20.0	ug/L	114
Total Xylene Isomers	07.13.95	957224	65.1	60.0	ug/L	109
TPH (Gasoline Range)	07.13.95	957224	1150	1000	ug/L	115
3. TPH	C507018*1					
Date Analyzed	07.10.95	957224	07/10/95	07/10/95	Date	N/A
Benzene	07.10.95	957224	17.1	20.0	ug/L	86
Toluene	07.10.95	957224	18.4	20.0	ug/L	92
Ethylbenzene	07.10.95	957224	19.6	20.0	ug/L	98
Methyl-tert-butylether	07.10.95	957224	22.0	20.0	ug/L	110
Total Xylene Isomers	07.10.95	957224	59.1	60.0	ug/L	99
TPH (Gasoline Range)	07.10.95	957224	960	1000	ug/L	96
4. TPH	C507006*1					
Date Analyzed	07.08.95	958138	07/08/95	07/08/95	Date	N/A
Benzene	07.08.95	958138	6.09	6.40	mg/M3	95
Toluene	07.08.95	958138	6.02	6.40	mg/M3	94
Ethylbenzene	07.08.95	958138	6.08	6.40	mg/M3	95
Methyl-tert-butylether	07.08.95	958138	6.95	6.40	mg/M3	109
Total Xylene Isomers	07.08.95	958138	18.1	19.2	mg/M3	94
5. TPH	C507007*1					
Date Analyzed	07.08.95	958138	07/08/95	07/08/95	Date	N/A
Benzene	07.08.95	958138	5.73	6.40	mg/M3	90
Toluene	07.08.95	958138	5.67	6.40	mg/M3	89
Ethylbenzene	07.08.95	958138	5.74	6.40	mg/M3	90
Methyl-tert-butylether	07.08.95	958138	7.81	6.40	mg/M3	122
Total Xylene Isomers	07.08.95	958138	17.2	19.2	mg/M3	90
6. TPH	C507010*1					
Date Analyzed	07.06.95	958138	07/06/95	07/06/95	Date	N/A
Benzene	07.06.95	958138	6.32	6.40	mg/M3	99
Toluene	07.06.95	958138	6.22	6.40	mg/M3	97
Ethylbenzene	07.06.95	958138	6.24	6.40	mg/M3	98
Methyl-tert-butylether	07.06.95	958138	7.62	6.40	mg/M3	119
Total Xylene Isomers	07.06.95	958138	18.6	19.2	mg/M3	97

BC ANALYTICAL

ORDER QC REPORT FOR C9507003

DATE REPORTED : 07/17/95

ADDITIONAL LCS PRECISION (DUPLICATES)
BATCH QC REPORT

PARAMETER	SAMPLE NUMBER	DATE ANALYZED	BATCH NUMBER	LC1 RESULT	LC2 RESULT	UNIT	RELATIVE % DIFF
TPH							
Date Analyzed		07.12.95	957224	07/12/95	07/13/95	Date	N/A
Benzene		07.12.95	957224	19.5	19.3	ug/L	1
Toluene		07.12.95	957224	21.0	21.0	ug/L	0
Ethylbenzene		07.12.95	957224	21.1	21.6	ug/L	2
Methyl-tert-butylether		07.12.95	957224	22.2	22.8	ug/L	3
Total Xylene Isomers		07.12.95	957224	65.2	65.1	ug/L	0
TPH (Gasoline Range)		07.12.95	957224	940	1150	ug/L	20
TPH							
Date Analyzed		07.08.95	958138	07/08/95	07/08/95	Date	N/A
Benzene		07.08.95	958138	6.09	5.73	mg/M3	6
Toluene		07.08.95	958138	6.02	5.67	mg/M3	6
Ethylbenzene		07.08.95	958138	6.08	5.74	mg/M3	6
Methyl-tert-butylether		07.08.95	958138	6.95	7.81	mg/M3	12
Total Xylene Isomers		07.08.95	958138	18.1	17.2	mg/M3	5

BC ANALYTICAL

ORDER QC REPORT FOR C9507003

DATE REPORTED : 07/17/95

MATRIX QC ACCURACY (SPIKES)
BATCH QC REPORT

PARAMETER	SAMPLE NUMBER	DATE ANALYZED	BATCH NUMBER	MS %	MSD %	TRUE RESULT	UNIT
TPH	9507002*4						
Benzene		07.12.95	957224	98	100	20.0	ug/L
Toluene		07.12.95	957224	102	105	20.0	ug/L
Ethylbenzene		07.12.95	957224	107	110	20.0	ug/L
Methyl-tert-butylether		07.12.95	957224	114	146	20.0	ug/L
Total Xylene Isomers		07.12.95	957224	107	108	61.6	ug/L
TPH (Gasoline Range)		07.12.95	957224	120	121	1000	ug/L

BC ANALYTICAL

ORDER QC REPORT FOR C9507003

DATE REPORTED : 07/17/95

MATRIX QC PRECISION (DUPLICATE SPIKES)
 BATCH QC REPORT

PARAMETER	SAMPLE NUMBER	DATE ANALYZED	BATCH NUMBER	MS RESULT	MSD RESULT	UNIT	RELATIVE % DIFF
TPH	9507002*4						
Date Analyzed		07.12.95	957224	07/12/95	07/12/95	Date	N/A
Benzene		07.12.95	957224	19.6	20.0	ug/L	2
Toluene		07.12.95	957224	20.3	20.9	ug/L	3
Ethylbenzene		07.12.95	957224	21.3	21.9	ug/L	3
Methyl-tert-butylether		07.12.95	957224	22.7	29.2	ug/L	25
Total Xylene Isomers		07.12.95	957224	65.7	66.5	ug/L	1
TPH (Gasoline Range)		07.12.95	957224	1200	1210	ug/L	1

BC ANALYTICAL

ORDER QC REPORT FOR C9507003

DATE REPORTED : 07/17/95

METHOD BLANKS AND REPORTING DETECTION LIMIT (RDL)
FOR BATCHES WHICH INCLUDE THIS ORDER

PARAMETER	DATE ANALYZED	BATCH NUMBER	BLANK RESULT	RDL	UNIT	METHOD
1. TPH	B507008*1					
Date Analyzed	07.10.95	957224	07/10/95	NA	Date	8015M.TX
Benzene	07.10.95	957224	0.20	0.5	ug/L	8015M.TX
Toluene	07.10.95	957224	0.22	0.5	ug/L	8015M.TX
Ethylbenzene	07.10.95	957224	0.059	0.5	ug/L	8015M.TX
Methyl-tert-butylether	07.10.95	957224	4.1	NA	ug/L	8015M.TX
Total Xylene Isomers	07.10.95	957224	0.38	0.5	ug/L	8015M.TX
TPH (Gasoline Range)	07.10.95	957224	4.9	50	ug/L	8015M.TX
2. TPH	B507009*1					
Date Analyzed	07.12.95	957224	07/12/95	NA	Date	8015M.TX
Benzene	07.12.95	957224	0.26	0.5	ug/L	8015M.TX
Toluene	07.12.95	957224	0.21	0.5	ug/L	8015M.TX
Ethylbenzene	07.12.95	957224	0	0.5	ug/L	8015M.TX
Methyl-tert-butylether	07.12.95	957224	0	NA	ug/L	8015M.TX
Total Xylene Isomers	07.12.95	957224	0.39	0.5	ug/L	8015M.TX
TPH (Gasoline Range)	07.12.95	957224	7.1	50	ug/L	8015M.TX
3. TPH	B507002*1					
Date Analyzed	07.06.95	958138	07/06/95	NA	Date	8015M.TX
Benzene	07.06.95	958138	0	NA	mg/M3	8015M.TX
Toluene	07.06.95	958138	0.042	NA	mg/M3	8015M.TX
Ethylbenzene	07.06.95	958138	0	NA	mg/M3	8015M.TX
Methyl-tert-butylether	07.06.95	958138	0.54	NA	mg/M3	8015M.TX
Total Xylene Isomers	07.06.95	958138	0.029	NA	mg/M3	8015M.TX
TPH (Gasoline Range)	07.06.95	958138	0.98	NA	mg/M3	8015M.TX
4. TPH	B507003*1					
Date Analyzed	07.07.95	958138	07/07/95	NA	Date	8015M.TX
Benzene	07.07.95	958138	0	NA	mg/M3	8015M.TX
Toluene	07.07.95	958138	0.035	NA	mg/M3	8015M.TX
Ethylbenzene	07.07.95	958138	0	NA	mg/M3	8015M.TX
Methyl-tert-butylether	07.07.95	958138	0.44	NA	mg/M3	8015M.TX
Total Xylene Isomers	07.07.95	958138	0	NA	mg/M3	8015M.TX
TPH (Gasoline Range)	07.07.95	958138	0.60	NA	mg/M3	8015M.TX

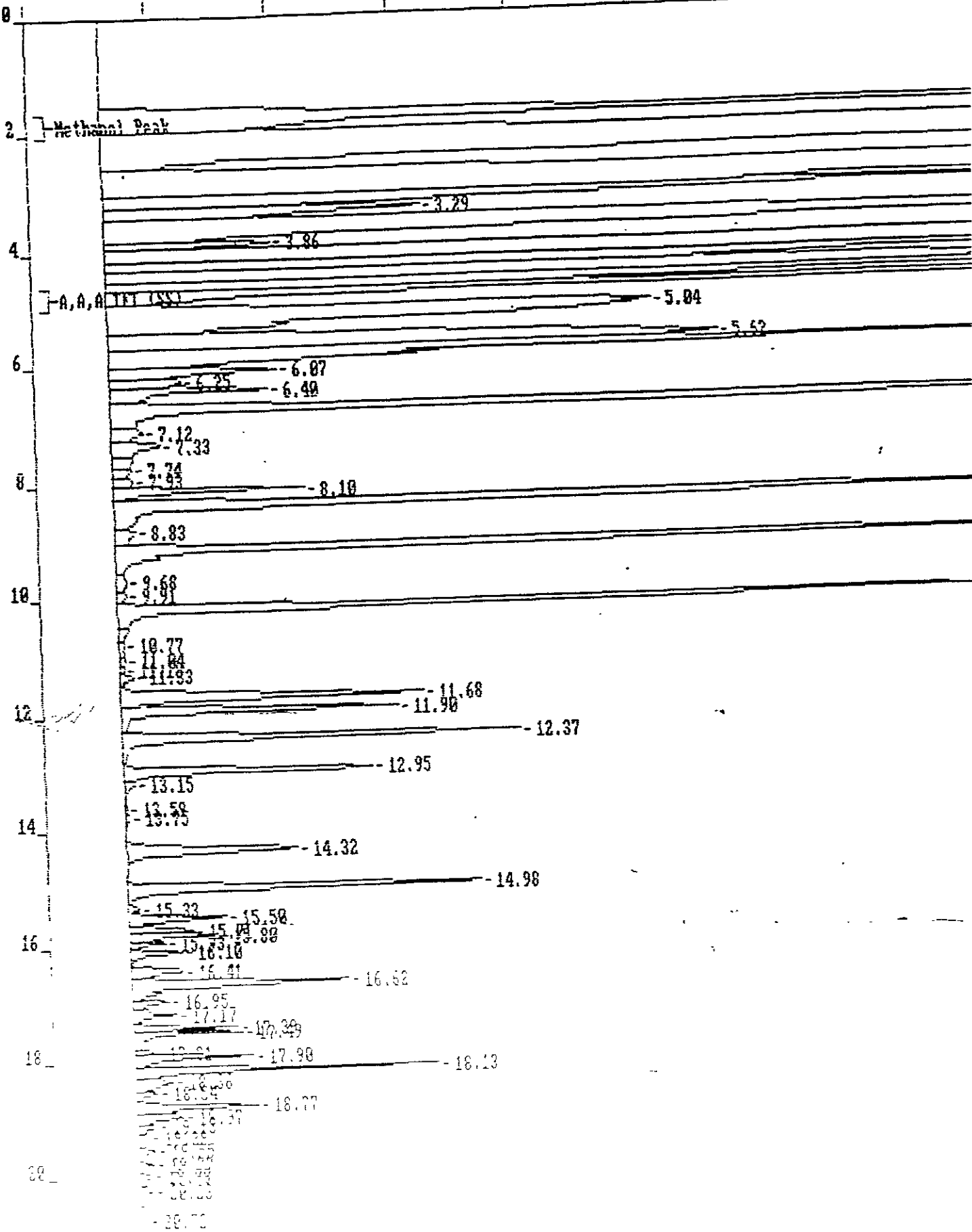
METHOD	ANALYTE	BATCH	ANALYZED	REPORTED	TRUE	%REC	FLAG
9507003*1							
8015M.TXa	a,a,a-Trifluorotoluene	957224	07/10/95	53.4	50.0	107	
9507003*2							
8015M.TXa	a,a,a-Trifluorotoluene	957224	07/10/95	52.9	50.0	106	
9507003*3							
8015M.TXa	a,a,a-Trifluorotoluene	957224	07/10/95	50.0	50.0	100	
9507003*4							
8015M.TXa	a,a,a-Trifluorotoluene	957224	07/10/95	47.3	50.0	95	
9507003*5							
8015M.TXa	a,a,a-Trifluorotoluene	958138	07/07/95	70.2	50.0	140	
9507003*6							
8015M.TXa	a,a,a-Trifluorotoluene	958138	07/07/95	50.2	50.0	100	
9507003*7							
8015M.TXa	a,a,a-Trifluorotoluene	958138	07/07/95	48.9	50.0	98	

ETHOD	ANALYTE	BATCH	ANALYZED	REPORTED	TRUE	%REC	FLAG
507002*4*R1							
015M.TXa	a,a,a-Trifluorotoluene	957224	07/12/95	47.0	50.0	94	
507002*4*S1							
015M.TXa	a,a,a-Trifluorotoluene	957224	07/12/95	47.5	50.0	95	
507002*4*S2							
015M.TXa	a,a,a-Trifluorotoluene	957224	07/12/95	48.2	50.0	96	
507002*4*T							
015M.TXa	a,a,a-Trifluorotoluene	957224	07/12/95	50.0	50.0	100	
507002*1*MB							
015M.TXa	a,a,a-Trifluorotoluene	958138	07/06/95	49.0	50.0	98	
507003*1*MB							
015M.TXa	a,a,a-Trifluorotoluene	958138	07/07/95	48.8	50.0	98	
507008*1*MB							
015M.TXa	a,a,a-Trifluorotoluene	957224	07/10/95	46.8	50.0	94	
507009*1*MB							
015M.TXa	a,a,a-Trifluorotoluene	957224	07/12/95	49.2	50.0	98	
C507005*1*LC							
015M.TXa	a,a,a-Trifluorotoluene	958138	07/08/95	48.1	50.0	96	
C507006*1*LT							
015M.TXa	a,a,a-Trifluorotoluene	958138	07/08/95	50.0	50.0	100	
C507007*1*LC							
015M.TXa	a,a,a-Trifluorotoluene	958138	07/08/95	48.4	50.0	97	
C507007*1*LT							
015M.TXa	a,a,a-Trifluorotoluene	958138	07/08/95	50.0	50.0	100	
C507010*1*LC							
015M.TXa	a,a,a-Trifluorotoluene	958138	07/06/95	46.0	50.0	92	
C507010*1*LT							
015M.TXa	a,a,a-Trifluorotoluene	958138	07/06/95	50.0	50.0	100	

ETHOD	ANALYTE	BATCH	ANALYZED	REPORTED	TRUE	%REC	FLAG
507016*1*LC							
015M.TX	a,a,a-Trifluorotoluene	957224	07/12/95	46.7	50.0	93	
507016*1*LT							
015M.TX	a,a,a-Trifluorotoluene	957224	07/12/95	50.0	50.0	100	
507017*1*LC							
015M.TX	a,a,a-Trifluorotoluene	957224	07/13/95	46.3	50.0	93	
507017*1*LT							
015M.TX	a,a,a-Trifluorotoluene	957224	07/13/95	50.0	50.0	100	
507018*1*LC							
015M.TX	a,a,a-Trifluorotoluene	957224	07/10/95	47.3	50.0	95	
507018*1*LT							
015M.TX	a,a,a-Trifluorotoluene	957224	07/10/95	50.0	50.0	100	

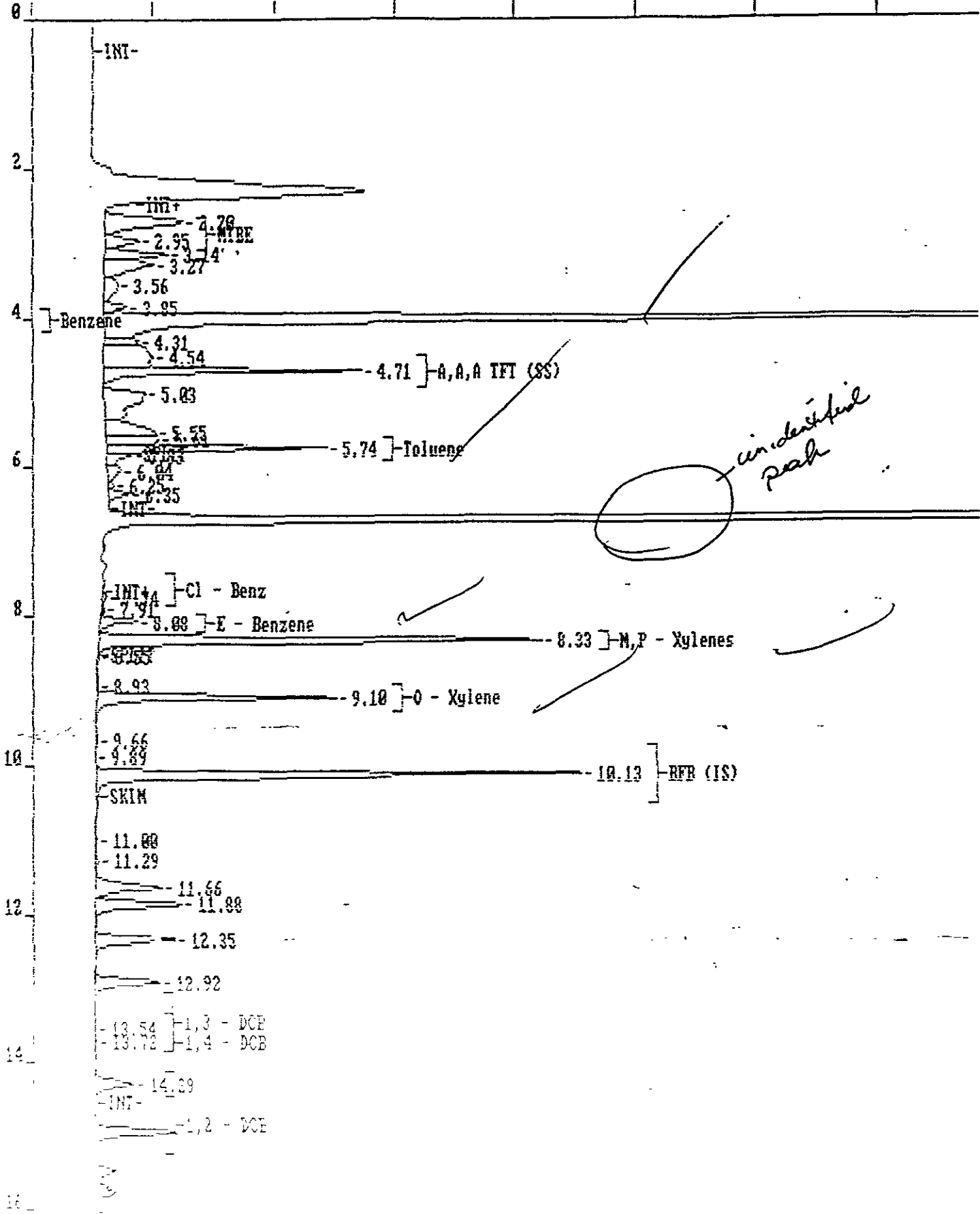
W

file=C:\CP\8\0795DATA\B10.10R Date printed=07-13-1995 Time= 14:59:22
Sample Name=7224.9507003-1.1
0 to 22.996 min. Low Y=0.0 High Y=100.0 mv Span=100.0

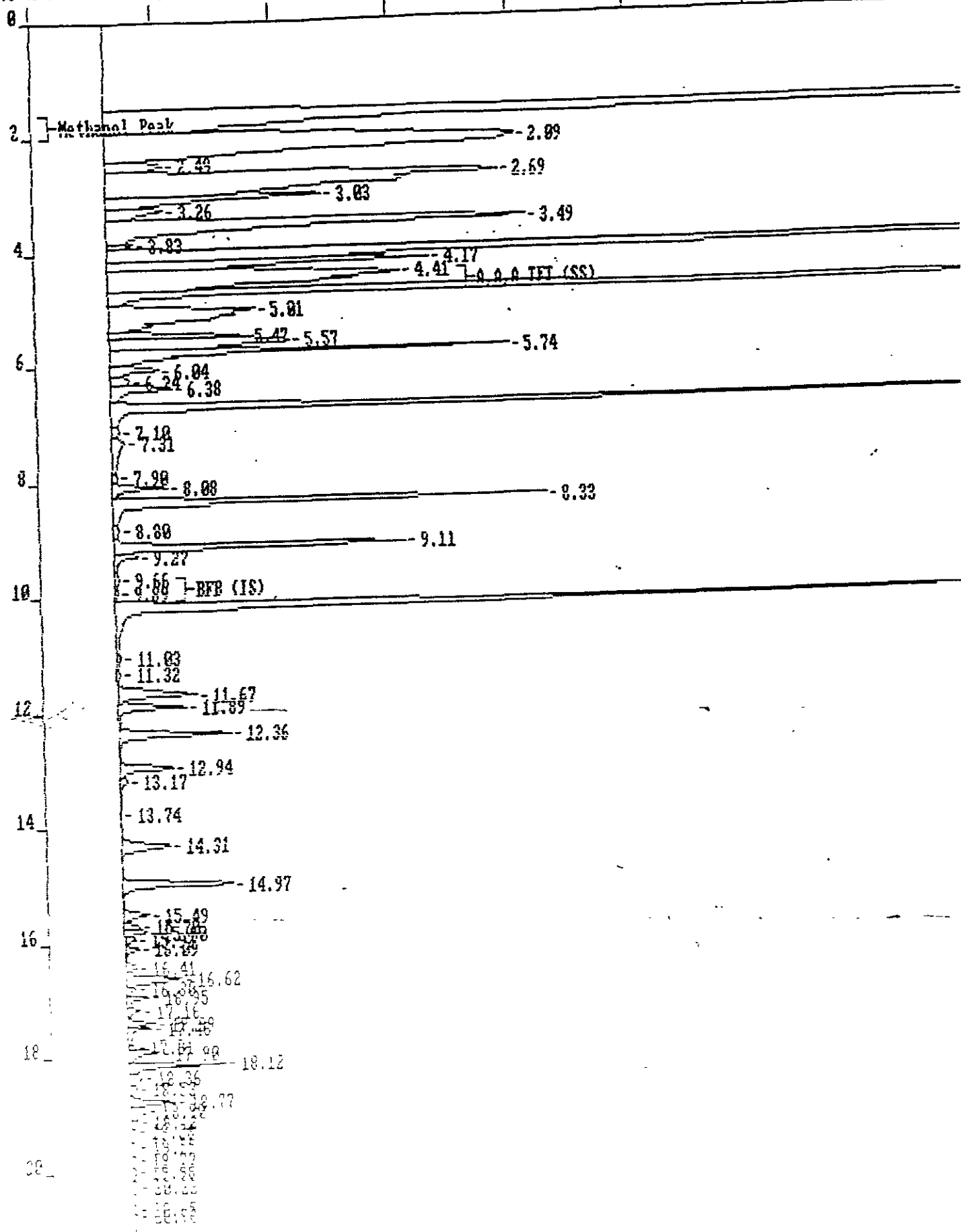


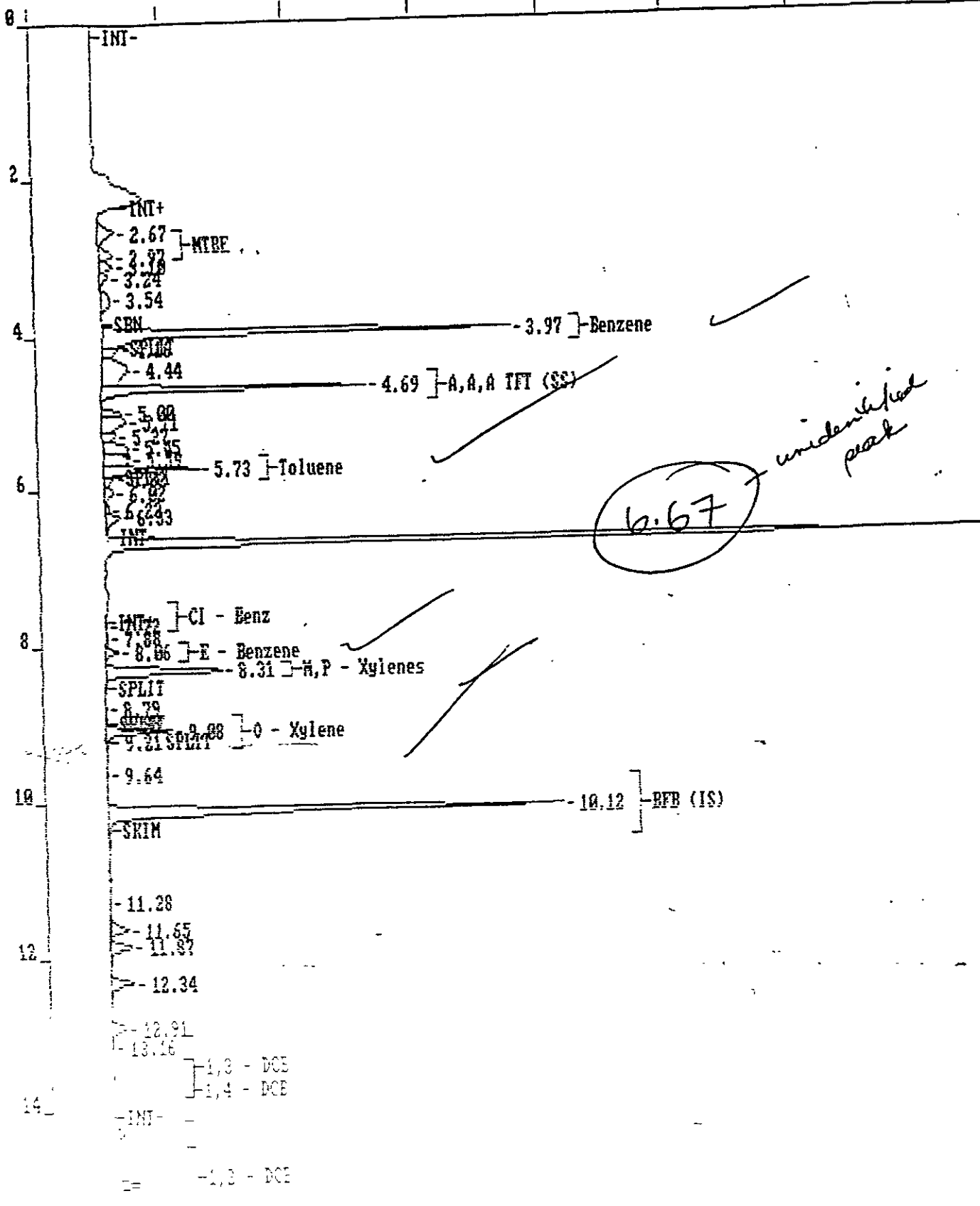
Sample Name=7224,9507003-1.1

0.0 to 18.003 min. Low Y=0.0 High Y=100.0 mv Span=100.0



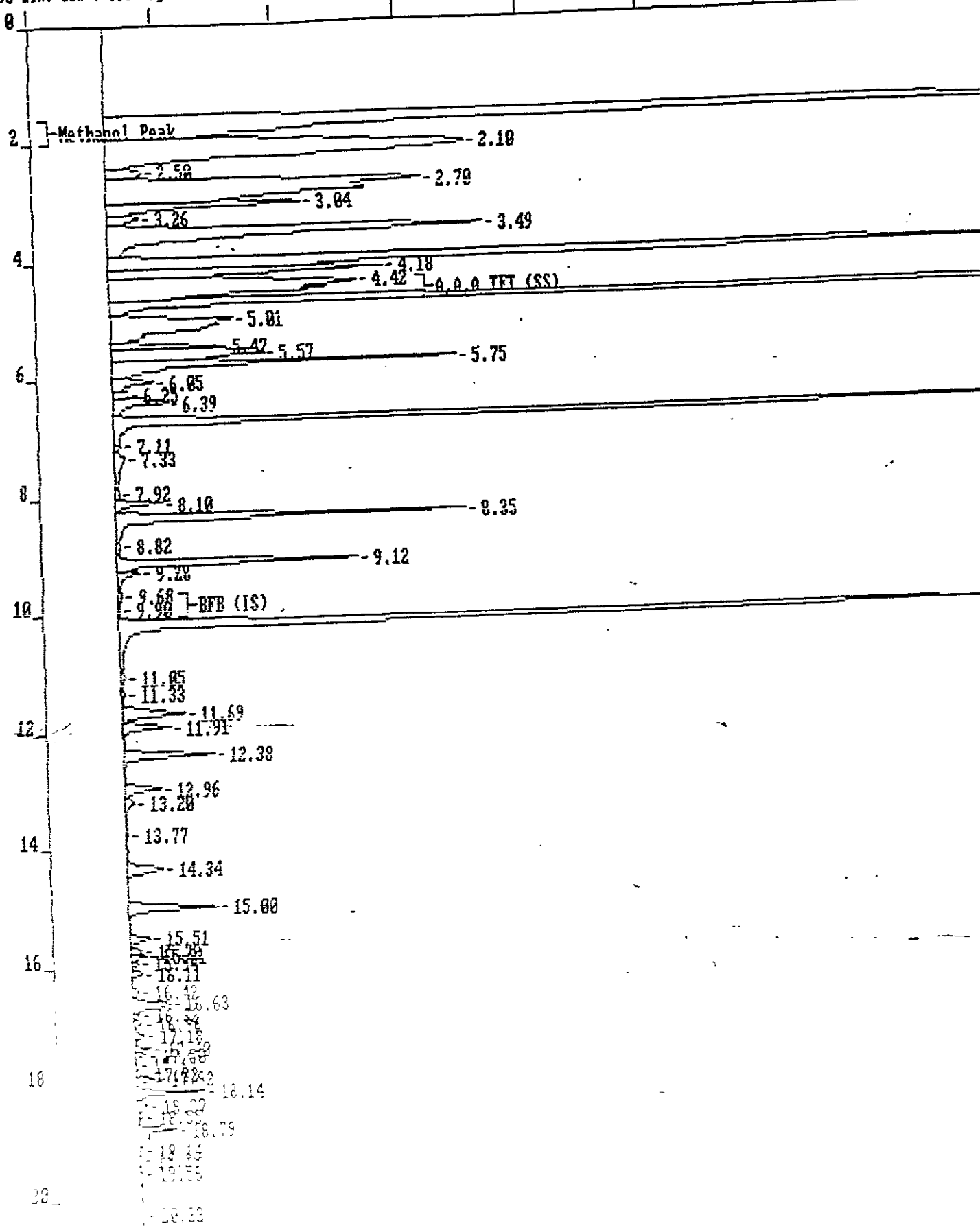
W

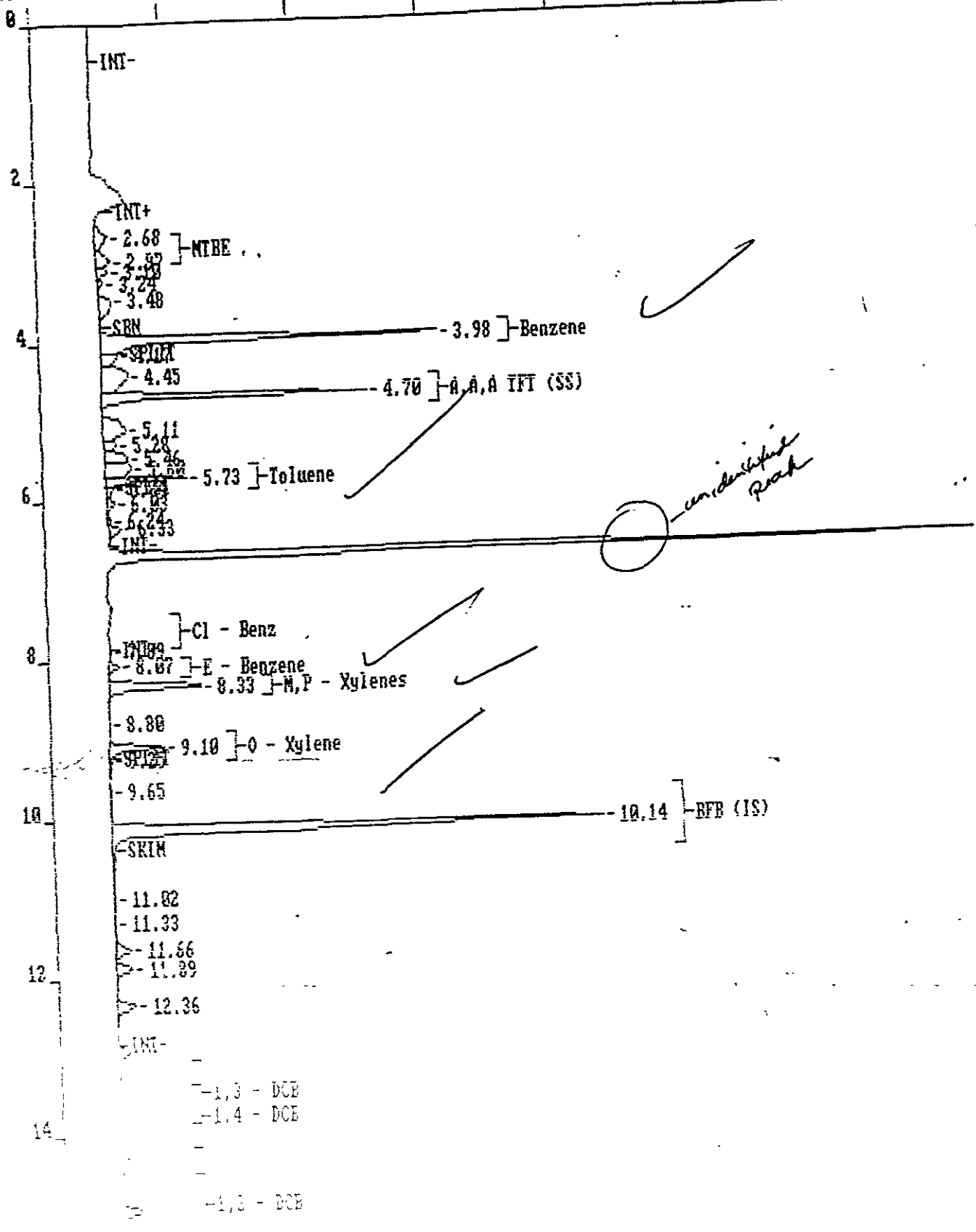




(W)

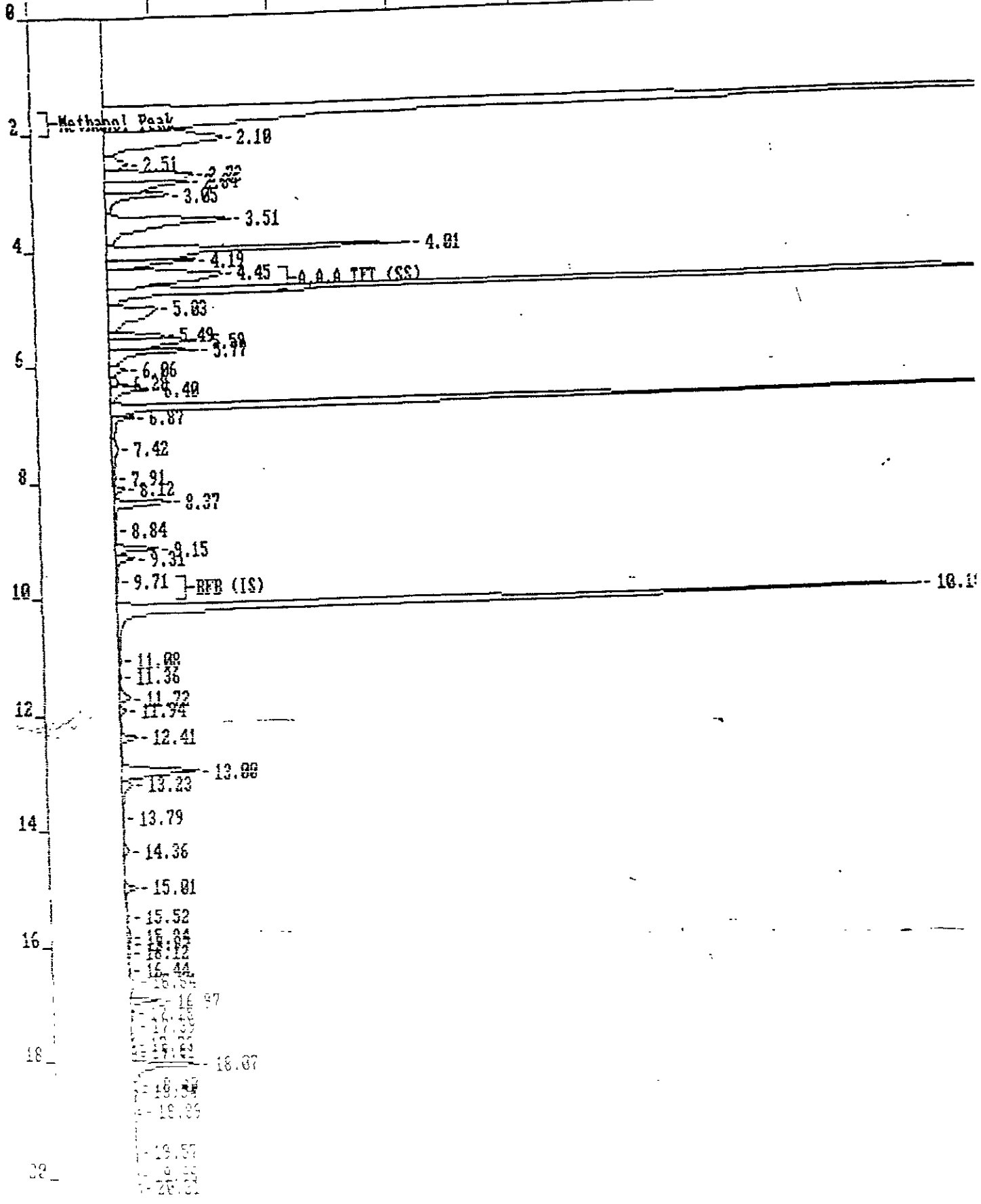
file=C:\CP\B\0795DATA\810.12R Date printed=07-10-1995 Time= 19:53:29
Sample Name=7224,9507003-3,1
0.0 to 22.996 min. Low Y=0.0 High Y=100.0 mv Span=100.0





unidentified Peak

W

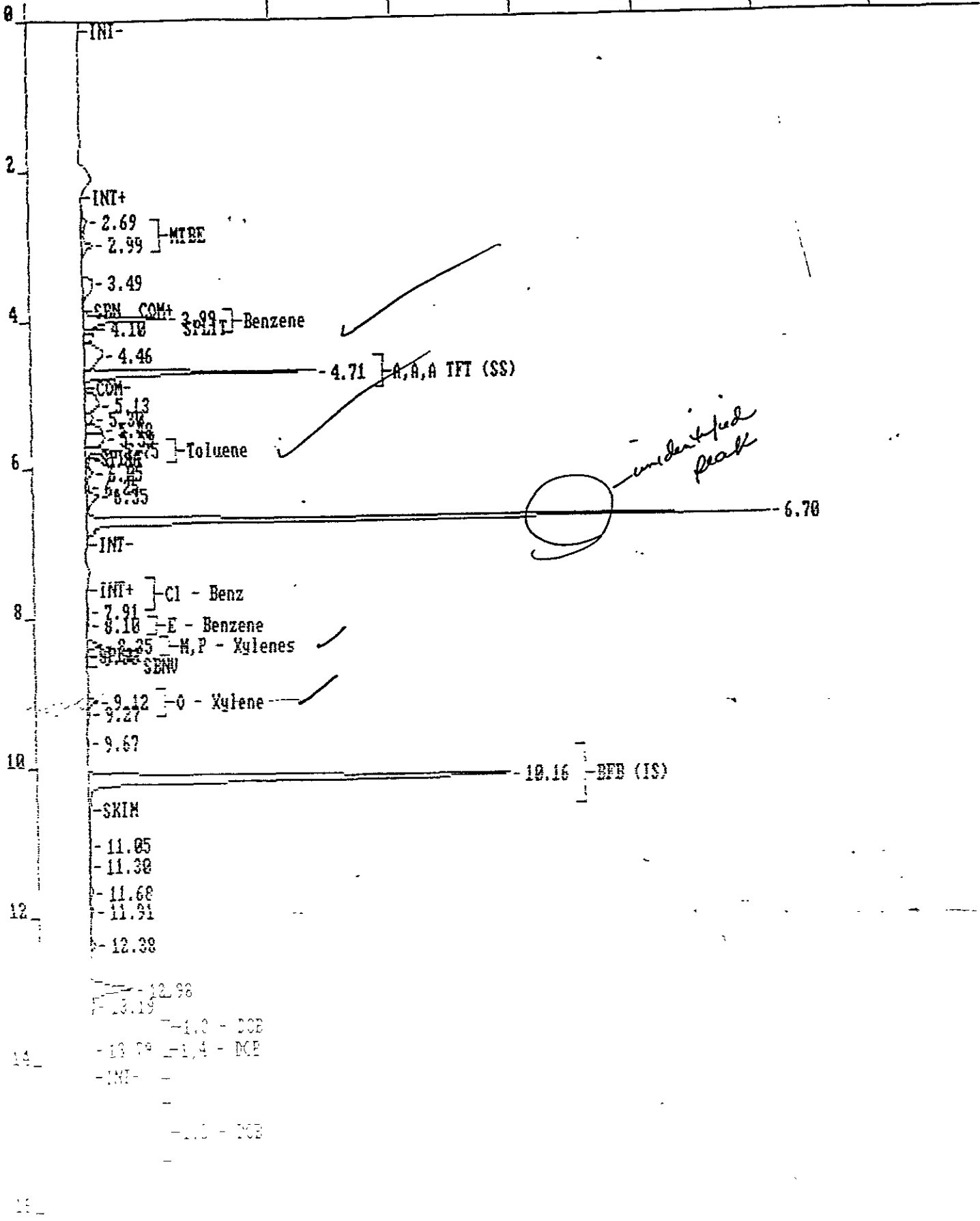


11

le=C:\CP\8\0795DATA\8108.15R Date printed=07-13-1995 Time= 14:19:18

Sample Name=7224,9507003-4,1

0 to 18.003 min. Low Y=0.0 High Y=100.0 mv Span=100.0



801 Western Avenue
 Glendale, CA 91201
 818/247-5737
 Fax: 818/247-9797

LOG NO: C95-08-006
 Received: 02 AUG 95
 Mailed: AUG 11 1995

Mr. Brian Garber
 Groundwater Technology, Inc.
 1401 Halvard Drive, Suite 140
 West Sacramento, California 95691

Purchase Order: 94-1446346+4370
 Requisition: 624881450
 Project: FKEP1001L

CC: Mr. Timothy R. Ross

REPORT OF ANALYTICAL RESULTS

Page 1

AQUEOUS

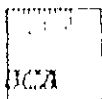
SAMPLE DESCRIPTION	DATE SAMPLED	TPH/BTEX (CADHS/8020)	Date Analyzed Date	Dilution Factor Times	TPH-g	Benzene	Toluene	Ethyl-Benzene	Methyl-tert-butylether	Total Xylenes Isomers	Carbon Range
					ug/L	ug/L	ug/L	ug/L	ug/L	ug/L	
PT				1	50	0.5	0.5	0.5	10	0.5	
1-C Eff	08/02/95	08/04/95		1	64	1.7	0.99	<0.5	<10	0.79	C6-C12
2-B BT-1	08/02/95	08/04/95		1	67	6.3	2.0	<0.5	<10	3.1	C6-C12
3-Inf	08/02/95	08/04/95		1	1000	220	15	4.9	12	60	C6-C12
4-A-Inf	08/02/95	08/08/95		1	61	0.94	1.5	<0.5	<10	<0.5	C6-C12

Karen Petryna
 1127 Lincoln Ave., Alameda
 Alameda County
 The gasoline range organics quantitated samples (Eff, B-BT-1, Inf, and A-Inf) did not display a typical gasoline pattern.
 J. Winter, 8/11/95

Maria Adriance
 Maria Adriance, Project Manager

The analytical results within this report relate only to the specific compounds and samples investigated and may not necessarily reflect other apparently similar material from the same or a similar location.

This report shall not be reproduced, except in full, without the written approval of BCA. No use of this report for promotional or advertising purposes is permitted without prior written BCA approval.



ORDER PLACED FOR CLIENT: Groundwater Technology, Inc. 9508006 :
BC ANALYTICAL : COND LAB : 14:15:07 10 AUG 1995 - P. 1 :
=====

AMPLES...	SAMPLE DESCRIPTION..	DETERM.....	DATE.....	METHOD.....	EQUIP.	BATCH..	ID.NO
		-	ANALYZED				
508006*1	C-Eff	GAS.BTX.TESNC	08.04.95	8015M.TX	516-24	957237	8658
508006*2	B-BT-1	GAS.BTX.TESNC	08.04.95	8015M.TX	516-24	957237	8658
508006*3	Inf	GAS.BTX.TESNC	08.04.95	8015M.TX	516-24	957237	8658
508006*4	A-Inf	GAS.BTX.TESNC	08.08.95	8015M.TX	516-20	958151	8658

Notes: Equipment = BC Analytical identification number for a particular piece of analytical equipment.
ID.NO = BC Analytical employee identification number of analyst.

BC ANALYTICAL

ORDER QC REPORT FOR C9508006

DATE REPORTED : 08/10/95

LABORATORY CONTROL STANDARDS
FOR BATCHES WHICH INCLUDE THIS ORDER

PARAMETER	DATE ANALYZED	BATCH NUMBER	LC RESULT	LT RESULT	UNIT	PERCENT RECOVERY
1. TPH	C508023*1					
Date Analyzed	08.04.95	957237	08/04/95	08/04/95	Date	N/A
Benzene	08.04.95	957237	17.9	20.0	ug/L	90
Toluene	08.04.95	957237	17.5	20.0	ug/L	88
Ethylbenzene	08.04.95	957237	18.2	20.0	ug/L	91
Methyl-tert-butylether	08.04.95	957237	18.1	20.0	ug/L	91
Total Xylene Isomers	08.04.95	957237	57.3	60.0	ug/L	96
TPH (Gasoline Range)	08.04.95	957237	1040	1000	ug/L	104
2. TPH	C508024*1					
Date Analyzed	08.07.95	957237	08.07.95	08/07/95	Date	N/A
Benzene	08.07.95	957237	17.6	20.0	ug/L	88
Toluene	08.07.95	957237	19.9	20.0	ug/L	100
Ethylbenzene	08.07.95	957237	19.5	20.0	ug/L	98
Methyl-tert-butylether	08.07.95	957237	18.8	20.0	ug/L	94
Total Xylene Isomers	08.07.95	957237	60.9	60.0	ug/L	102
TPH (Gasoline Range)	08.07.95	957237	1070	1000	ug/L	107
3. TPH	C508025*1					
Date Analyzed	08.05.95	957237	08/05/95	08/05/95	Date	N/A
Benzene	08.05.95	957237	18.7	20.0	ug/L	94
Toluene	08.05.95	957237	21.0	20.0	ug/L	105
Ethylbenzene	08.05.95	957237	21.6	20.0	ug/L	108
Methyl-tert-butylether	08.05.95	957237	19.5	20.0	ug/L	98
Total Xylene Isomers	08.05.95	957237	68.6	60.0	ug/L	114
TPH (Gasoline Range)	08.05.95	957237	918	1000	ug/L	92
4. TPH	C508021*1					
Date Analyzed	08.07.95	958151	08/07/95	08/07/95	Date	N/A
Benzene	08.07.95	958151	17.4	20.0	ug/L	87
Toluene	08.07.95	958151	18.6	20.0	ug/L	93
Ethylbenzene	08.07.95	958151	19.3	20.0	ug/L	97
Methyl-tert-butylether	08.07.95	958151	17.9	20.0	ug/L	90
Total Xylene Isomers	08.07.95	958151	60.0	60.0	ug/L	100
TPH (Gasoline Range)	08.07.95	958151	1090	1000	ug/L	109
5. TPH	C508022*1					
Date Analyzed	08.08.95	958151	08/08/95	08/08/95	Date	N/A
Benzene	08.08.95	958151	17.1	20.0	ug/L	86
Toluene	08.08.95	958151	18.7	20.0	ug/L	94
Ethylbenzene	08.08.95	958151	18.5	20.0	ug/L	93
Methyl-tert-butylether	08.08.95	958151	17.1	20.0	ug/L	86
Total Xylene Isomers	08.08.95	958151	57.8	60.0	ug/L	96
TPH (Gasoline Range)	08.08.95	958151	909	1000	ug/L	91

BC ANALYTICAL

ORDER QC REPORT FOR C9508006

DATE REPORTED : 08/10/95

ADDITIONAL LCS PRECISION (DUPLICATES)
BATCH QC REPORT

PARAMETER	SAMPLE NUMBER	DATE ANALYZED	BATCH NUMBER	LC1 RESULT	LC2 RESULT	UNIT	RELATIVE % DIFF
TPH							
Date Analyzed		08.04.95	957237	08/04/95	08.07.95	Date	N/A
Benzene		08.04.95	957237	17.9	17.6	ug/L	2
Toluene		08.04.95	957237	17.5	19.9	ug/L	13
Ethylbenzene		08.04.95	957237	18.2	19.5	ug/L	7
Methyl-tert-butylether		08.04.95	957237	18.1	18.8	ug/L	4
Total Xylene Isomers		08.04.95	957237	57.3	60.9	ug/L	6
TPH (Gasoline Range)		08.04.95	957237	1040	1070	ug/L	3
TPH							
Date Analyzed		08.07.95	958151	08/07/95	08/08/95	Date	N/A
Benzene		08.07.95	958151	17.4	17.1	ug/L	2
Toluene		08.07.95	958151	18.6	18.7	ug/L	1
Ethylbenzene		08.07.95	958151	19.3	18.5	ug/L	4
Methyl-tert-butylether		08.07.95	958151	17.9	17.1	ug/L	5
Total Xylene Isomers		08.07.95	958151	60.0	57.8	ug/L	4
TPH (Gasoline Range)		08.07.95	958151	1090	909	ug/L	18

BC ANALYTICAL

ORDER QC REPORT FOR C9508006

Page 1

DATE REPORTED : 08/10/95

MATRIX QC ACCURACY (SPIKES)
 BATCH QC REPORT

PARAMETER	SAMPLE NUMBER	DATE ANALYZED	BATCH NUMBER	MS %	MSD %	TRUE RESULT	UNIT
TPH	9508009*3						
Benzene		08.05.95	957237	89	87	20.0	ug/L
Toluene		08.05.95	957237	111	99	20.0	ug/L
Ethylbenzene		08.05.95	957237	108	106	20.0	ug/L
Methyl-tert-butylether		08.05.95	957237	96	89	20.0	ug/L
Total Xylene Isomers		08.05.95	957237	113	112	60.0	ug/L
TPH (Gasoline Range)		08.05.95	957237	89	98	1000	ug/L
TPH	9508015*1						
Benzene		08.08.95	958151	85	83	20.0	ug/L
Toluene		08.08.95	958151	91	91	20.0	ug/L
Ethylbenzene		08.08.95	958151	95	93	20.0	ug/L
Methyl-tert-butylether		08.08.95	958151	78	92	20.0	ug/L
Total Xylene Isomers		08.08.95	958151	99	97	60.0	ug/L
TPH (Gasoline Range)		08.08.95	958151	106	100	1000	ug/L

BC ANALYTICAL

ORDER QC REPORT FOR C9508006

Page 1

DATE REPORTED : 08/10/95

MATRIX QC PRECISION (DUPLICATE SPIKES)
BATCH QC REPORT

PARAMETER	SAMPLE NUMBER	DATE ANALYZED	BATCH NUMBER	MS RESULT	MSD RESULT	UNIT	RELATIVE % DIFF
1. TPH	9508009*3						
Date Analyzed		08.07.95	957237	08/07/95	08/07/95	Date	N/A
Benzene		08.07.95	957237	17.7	17.4	ug/L	2
Toluene		08.07.95	957237	22.2	19.8	ug/L	11
Ethylbenzene		08.07.95	957237	21.6	21.2	ug/L	2
Methyl-tert-butylether		08.07.95	957237	19.2	17.7	ug/L	8
Total Xylene Isomers		08.07.95	957237	67.9	67.0	ug/L	1
TPH (Gasoline Range)		08.07.95	957237	888	982	ug/L	10
2. TPH	9508015*1						
Date Analyzed		08.08.95	958151	08/08/95	08/08/95	Date	N/A
Benzene		08.08.95	958151	16.9	16.5	ug/L	2
Toluene		08.08.95	958151	18.2	18.1	ug/L	1
Ethylbenzene		08.08.95	958151	19.0	18.5	ug/L	3
Methyl-tert-butylether		08.08.95	958151	15.5	18.4	ug/L	17
Total Xylene Isomers		08.08.95	958151	59.6	58.0	ug/L	3
TPH (Gasoline Range)		08.08.95	958151	1060	995	ug/L	6

BC ANALYTICAL

ORDER QC REPORT FOR C9508006

Page 1

DATE REPORTED : 08/10/95

METHOD BLANKS AND REPORTING DETECTION LIMIT (RDL)
FOR BATCHES WHICH INCLUDE THIS ORDER

PARAMETER	DATE ANALYZED	BATCH NUMBER	BLANK RESULT	RDL	UNIT	METHOD
1. TPH	B508013*1					
Date Analyzed	08.04.95	957237	08/04/95	NA	Date	8015M.TX
Benzene	08.04.95	957237	0.25	0.5	ug/L	8015M.TX
Toluene	08.04.95	957237	0	0.5	ug/L	8015M.TX
Ethylbenzene	08.04.95	957237	0	0.5	ug/L	8015M.TX
Methyl-tert-butylether	08.04.95	957237	0	NA	ug/L	8015M.TX
Total Xylene Isomers	08.04.95	957237	0	0.5	ug/L	8015M.TX
TPH (Gasoline Range)	08.04.95	957237	5.3	50	ug/L	8015M.TX
2. TPH	B508016*1					
Date Analyzed	08.07.95	957237	08/07/95	NA	Date	8015M.TX
Benzene	08.07.95	957237	0	0.5	ug/L	8015M.TX
Toluene	08.07.95	957237	0.16	0.5	ug/L	8015M.TX
Ethylbenzene	08.07.95	957237	0	0.5	ug/L	8015M.TX
Methyl-tert-butylether	08.07.95	957237	0	NA	ug/L	8015M.TX
Total Xylene Isomers	08.07.95	957237	0.33	0.5	ug/L	8015M.TX
TPH (Gasoline Range)	08.07.95	957237	0	50	ug/L	8015M.TX
3. TPH	B508014*1					
Date Analyzed	08.07.95	958151	08/07/95	NA	Date	8015M.TX
Benzene	08.07.95	958151	0.053	0.5	ug/L	8015M.TX
Toluene	08.07.95	958151	0.16	0.5	ug/L	8015M.TX
Ethylbenzene	08.07.95	958151	0	0.5	ug/L	8015M.TX
Methyl-tert-butylether	08.07.95	958151	0	NA	ug/L	8015M.TX
Total Xylene Isomers	08.07.95	958151	0.056	0.5	ug/L	8015M.TX
TPH (Gasoline Range)	08.07.95	958151	0	50	ug/L	8015M.TX
4. TPH	B508017*1					
Date Analyzed	08.08.95	958151	08/08/95	NA	Date	8015M.TX
Benzene	08.08.95	958151	0.12	0.5	ug/L	8015M.TX
Toluene	08.08.95	958151	0.39	0.5	ug/L	8015M.TX
Ethylbenzene	08.08.95	958151	0.067	0.5	ug/L	8015M.TX
Methyl-tert-butylether	08.08.95	958151	0	NA	ug/L	8015M.TX
Total Xylene Isomers	08.08.95	958151	0.30	0.5	ug/L	8015M.TX
TPH (Gasoline Range)	08.08.95	958151	7.6	50	ug/L	8015M.TX

SURROGATE RECOVERIES :
BC ANALYTICAL : CORD LAB : 14:14:48 10 AUG 1995 - P. 1 :
=====

METHOD	ANALYTE	BATCH	ANALYZED	REPORTED	TRUE	%REC	FLAG
508006*1							
015M.TXa	,a,a-Trifluorotoluene	957237	08/04/95	54.7	50.0	109	
508006*2							
015M.TXa	,a,a-Trifluorotoluene	957237	08/04/95	50.4	50.0	101	
508006*3							
015M.TXa	,a,a-Trifluorotoluene	957237	08/04/95	53.6	50.0	107	
508006*4							
015M.TXa	,a,a-Trifluorotoluene	958151	08/08/95	52.0	50.0	104	

SURROGATE RECOVERIES :
 BC ANALYTICAL : CORD LAB : 14:14:51 10 AUG 1995 - P. 1 :
 =====

METHOD	ANALYTE	BATCH	ANALYZED	REPORTED	TRUE	%REC	FLAG
508009*3*R1							
015M.TXa	a,a,a-Trifluorotoluene	957237	08/05/95	50.4	50.0	101	
508009*3*S1							
015M.TXa	a,a,a-Trifluorotoluene	957237	08/07/95	49.8	50.0	100	
508009*3*S2							
015M.TXa	a,a,a-Trifluorotoluene	957237	08/07/95	49.5	50.0	99	
508009*3*T							
015M.TXa	a,a,a-Trifluorotoluene	957237	08/07/95	50.0	50.0	100	
508015*1*R1							
015M.TXa	a,a,a-Trifluorotoluene	958151	08/08/95	52.6	50.0	105	
508015*1*S1							
015M.TXa	a,a,a-Trifluorotoluene	958151	08/08/95	50.5	50.0	101	
508015*1*S2							
015M.TXa	a,a,a-Trifluorotoluene	958151	08/08/95	49.9	50.0	100	
508015*1*T							
015M.TXa	a,a,a-Trifluorotoluene	958151	08/08/95	50.0	50.0	100	
508013*1*MB							
015M.TXa	a,a,a-Trifluorotoluene	957237	08/04/95	49.7	50.0	99	
508014*1*MB							
015M.TXa	a,a,a-Trifluorotoluene	958151	08/07/95	50.8	50.0	102	
508016*1*MB							
015M.TXa	a,a,a-Trifluorotoluene	957237	08/07/95	49.9	50.0	100	
508017*1*MB							
015M.TXa	a,a,a-Trifluorotoluene	958151	08/08/95	51.7	50.0	103	
508021*1*LC							
015M.TXa	a,a,a-Trifluorotoluene	958151	08/07/95	49.1	50.0	98	
508021*1*LT							
015M.TXa	a,a,a-Trifluorotoluene	958151	08/07/95	50.0	50.0	100	

SURROGATE RECOVERIES :
BC-ANALYTICAL : CORD LAB : 14:14:51 10 AUG 1995 - P. 2 :

METHOD	ANALYTE	BATCH	ANALYZED	REPORTED	TRUE	%REC	FLAG
508022*1*LC							
015M.TXa	a,a-Trifluorotoluene	958151	08/08/95	49.8	50.0	100	
508022*1*LT							
015M.TXa	a,a-Trifluorotoluene	958151	08/08/95	50.0	50.0	100	
508023*1*LC							
015M.TXa	a,a-Trifluorotoluene	957237	08/04/95	48.5	50.0	97	
508023*1*LT							
015M.TXa	a,a-Trifluorotoluene	957237	08/04/95	50.0	50.0	100	
508024*1*LC							
015M.TXa	a,a-Trifluorotoluene	957237	08/07/95	50.4	50.0	101	
508024*1*LT							
015M.TXa	a,a-Trifluorotoluene	957237	08/07/95	50.0	50.0	100	
508025*1*LC							
015M.TXa	a,a-Trifluorotoluene	957237	08/05/95	48.2	50.0	96	
508025*1*LT							
015M.TXa	a,a-Trifluorotoluene	957237	08/05/95	50.0	50.0	100	

01 Western Avenue
 Mendota, CA 91201
 181217 5137
 fax: 8181217 9297

LOG #: C95-09-001

Received: 01 SCP 95

Mailed: SEP 15 1995

Mr. Brian Garber
 Groundwater Technology, Inc.
 1701 Halyard Drive, Suite 140
 West Sacramento, California 95691

Purchase Order: 94-1446346+4370

Requisition: 624881450
 Project: FKEP1001L

CC: Mr. Timothy Ross

REPORT OF ANALYTICAL RESULTS

Page 1

AQUEOUS

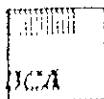
SAMPLE DESCRIPTION	DATE SAMPLED	TPH/BTEX (CADHS/8020)	ANALYTICAL DATA								
			Date Analyzed Date	Dilution Factor Times	TPH-g ug/L	Benzene ug/L	Toluene ug/L	Ethyl-Benzene ug/L	Methyl-tert-butylether ug/L	Total Xylenes Isomers ug/l.	Carbon Range
ROI				1	50	0.5	0.5	0.5	10	0.5	
1-C-1ff	08/31/95	09/05/95	1		<50	<0.5	<0.5	<0.5	<10	<0.5	C6-C12
2-B-B1-1	08/31/95	09/11/95	1		940	120	75	20	<10	150	C6-C12
3-A-1nf	08/31/95	09/11/95	1		900	98	73	14	<10	150	C6-C12
4-1nf	08/31/95	09/12/95	1		1400	190	27	110	<10	120	C6-C12

Karen Petryna
 1127 Lincoln Ave., Alameda
 Alameda County

Maria Adriance
 Maria Adriance, Project Manager

The analytical results within this report relate only to the specific compounds and samples investigated and may not necessarily reflect other apparently similar material from the same or a similar location.

This report shall not be reproduced, except in full, without the written approval of BCA. No use of this report for promotional or advertising purposes is permitted without prior written BCA approval.



: ORDER PLACED FOR CLIENT: Groundwater Technology, Inc. 9509001 :
: BC ANALYTICAL : COND LAB : 14:33:47 14 SEP 1995 - P. 1 :
=====

SAMPLES...	SAMPLE DESCRIPTION..	DETERM.....	DATE..... ANALYZED	METHOD.....	EQUIP.	BATCH..	ID.NO
9509001*1	C-Eff	GAS.BTX.TESNC	09.05.95	8015M.TX	516-24	957246	8607
9509001*2	B-BT-1	GAS.BTX.TESNC	09.11.95	8015M.TX	516-20	958163	8607
9509001*3	A-Inf	GAS.BTX.TESNC	09.11.95	8015M.TX	516-20	958163	8607
9509001*4	Inf	GAS.BTX.TESNC	09.12.95	8015M.TX	516-20	958163	8607

Notes: Equipment = BC Analytical identification number for a particular piece of analytical equipment.
ID.NO = BC Analytical employee identification number of analyst.

BC ANALYTICAL

ORDER QC REPORT FOR C9509001

DATE REPORTED : 09/14/95

LABORATORY CONTROL STANDARDS
FOR BATCHES WHICH INCLUDE THIS ORDER

PARAMETER	DATE ANALYZED	BATCH NUMBER	LC RESULT	LT RESULT	UNIT	PERCENT RECOVERY
1. TPH	C509010*1					
Date Analyzed	09.05.95	957246	09/05/95	09/05/95	Date	N/A
Benzene	09.05.95	957246	18.1	20.0	ug/L	91
Toluene	09.05.95	957246	20.2	20.0	ug/L	101
Ethylbenzene	09.05.95	957246	18.5	20.0	ug/L	93
Methyl-tert-butylether	09.05.95	957246	19.1	20.0	ug/L	96
Total Xylene Isomers	09.05.95	957246	62.6	60.0	ug/L	104
TPH (Gasoline Range)	09.05.95	957246	854	1000	ug/L	85
a,a,a-Trifluorotoluene Rep.	09.05.95	957246	57.8	50.0	ug/L	116
a,a,a-Trifluorotoluene Th.	09.05.95	957246	50.0	50.0	ug/L	100
2. TPH	C509011*1					
Date Analyzed	09.06.95	957246	09/06/95	09/06/95	Date	N/A
Benzene	09.06.95	957246	19.0	20.0	ug/L	95
Toluene	09.06.95	957246	20.1	20.0	ug/L	101
Ethylbenzene	09.06.95	957246	18.7	20.0	ug/L	94
Methyl-tert-butylether	09.06.95	957246	20.6	20.0	ug/L	103
Total Xylene Isomers	09.06.95	957246	63.1	60.0	ug/L	105
TPH (Gasoline Range)	09.06.95	957246	862	1000	ug/L	86
a,a,a-Trifluorotoluene Rep.	09.06.95	957246	55.6	50.0	ug/L	111
a,a,a-Trifluorotoluene Th.	09.06.95	957246	50.0	50.0	ug/L	100
3. TPH	C509012*1					
Date Analyzed	09.06.95	957246	09/06/95	09/06/95	Date	N/A
Benzene	09.06.95	957246	18.5	20.0	ug/L	93
Toluene	09.06.95	957246	19.8	20.0	ug/L	99
Ethylbenzene	09.06.95	957246	18.6	20.0	ug/L	93
Methyl-tert-butylether	09.06.95	957246	21.4	20.0	ug/L	107
Total Xylene Isomers	09.06.95	957246	62.3	60.0	ug/L	104
TPH (Gasoline Range)	09.06.95	957246	880	1000	ug/L	88
a,a,a-Trifluorotoluene Rep.	09.06.95	957246	55.5	50.0	ug/L	111
a,a,a-Trifluorotoluene Th.	09.06.95	957246	50.0	50.0	ug/L	100
4. TPH	C509018*1					
Date Analyzed	09.11.95	958163	09/11/95	09/11/95	Date	N/A
Benzene	09.11.95	958163	21.0	20.0	ug/L	105
Toluene	09.11.95	958163	20.8	20.0	ug/L	104
Ethylbenzene	09.11.95	958163	21.5	20.0	ug/L	108
Methyl-tert-butylether	09.11.95	958163	18.3	20.0	ug/L	92
Total Xylene Isomers	09.11.95	958163	64.4	60.0	ug/L	107
TPH (Gasoline Range)	09.11.95	958163	1140	1000	ug/L	114
a,a,a-Trifluorotoluene Rep.	09.11.95	958163	51.1	50.0	ug/L	102
a,a,a-Trifluorotoluene Th.	09.11.95	958163	50.0	50.0	ug/L	100
5. TPH	C509019*1					
Date Analyzed	09.12.95	958163	09/12/95	09/12/95	Date	N/A
Benzene	09.12.95	958163	22.5	20.0	ug/L	113
Toluene	09.12.95	958163	22.3	20.0	ug/L	112
Ethylbenzene	09.12.95	958163	22.9	20.0	ug/L	115

BC ANALYTICAL

ORDER QC REPORT FOR C9509001

DATE REPORTED : 09/14/95

Page 2

LABORATORY CONTROL STANDARDS
FOR BATCHES WHICH INCLUDE THIS ORDER

PARAMETER	DATE ANALYZED	BATCH NUMBER	LC RESULT	LT RESULT	UNIT	PERCENT RECOVERY
Methyl-tert-butylether	09.12.95	958163	22.0	20.0	ug/L	110
Total Xylene Isomers	09.12.95	958163	68.4	60.0	ug/L	114
TPH (Gasoline Range)	09.12.95	958163	1110	1000	ug/L	111
a,a,a-Trifluorotoluene Rep.	09.12.95	958163	50.8	50.0	ug/L	102
a,a,a-Trifluorotoluene Th.	09.12.95	958163	50.0	50.0	ug/L	100

BC ANALYTICAL

ORDER QC REPORT FOR C9509001

DATE REPORTED : 09/14/95

Page 1

ADDITIONAL LCS PRECISION (DUPLICATES)
BATCH QC REPORT

PARAMETER	SAMPLE NUMBER	DATE ANALYZED	BATCH NUMBER	LC1 RESULT	LC2 RESULT	UNIT	RELATIVE % DIFF
1. TPH							
Date Analyzed		09.05.95	957246	09/05/95	09/06/95	Date	N/A
Benzene		09.05.95	957246	18.1	19.0	ug/L	5
Toluene		09.05.95	957246	20.2	20.1	ug/L	0
Ethylbenzene		09.05.95	957246	18.5	18.7	ug/L	1
Methyl-tert-butylether		09.05.95	957246	19.1	20.6	ug/L	8
Total Xylene Isomers		09.05.95	957246	62.6	63.1	ug/L	1
TPH (Gasoline Range)		09.05.95	957246	854	862	ug/L	1
a,a,a-Trifluorotoluene Rep.		09.05.95	957246	57.8	55.6	ug/L	4
a,a,a-Trifluorotoluene Th.		09.05.95	957246	50.0	50.0	ug/L	0
2. TPH							
Date Analyzed		09.11.95	958163	09/11/95	09/12/95	Date	N/A
Benzene		09.11.95	958163	21.0	22.5	ug/L	7
Toluene		09.11.95	958163	20.8	22.3	ug/L	7
Ethylbenzene		09.11.95	958163	21.5	22.9	ug/L	6
Methyl-tert-butylether		09.11.95	958163	18.3	22.0	ug/L	18
Total Xylene Isomers		09.11.95	958163	64.4	68.4	ug/L	6
TPH (Gasoline Range)		09.11.95	958163	1140	1110	ug/L	3
a,a,a-Trifluorotoluene Rep.		09.11.95	958163	51.1	50.8	ug/L	1
a,a,a-Trifluorotoluene Th.		09.11.95	958163	50.0	50.0	ug/L	0

BC ANALYTICAL

ORDER QC REPORT FOR C9509001

DATE REPORTED : 09/14/95

Page 1

MATRIX QC PRECISION (DUPLICATE SPIKES)
BATCH QC REPORT

PARAMETER	SAMPLE NUMBER	DATE ANALYZED	BATCH NUMBER	MS RESULT	MSD RESULT	UNIT	RELATIVE % DIFF
1. TPH	9509002*9						
Date Analyzed		09.06.95	957246	09/06/95	09/06/95	Date	N/A
Benzene		09.06.95	957246	21.0	20.7	ug/L	1
Toluene		09.06.95	957246	22.3	21.8	ug/L	2
Ethylbenzene		09.06.95	957246	21.2	20.4	ug/L	4
Methyl-tert-butylether		09.06.95	957246	25.3	23.7	ug/L	7
Total Xylene Isomers		09.06.95	957246	70.9	69.1	ug/L	3
TPH (Gasoline Range)		09.06.95	957246	832	836	ug/L	0
a,a,a-Trifluorotoluene Rep.		09.06.95	957246	58.1	56.7	ug/L	2
a,a,a-Trifluorotoluene Th.		09.06.95	957246	50.0	50.0	ug/L	0
2. TPH	9509012*1						
Date Analyzed		09.11.95	958163	09/11/95	09/11/95	Date	N/A
Benzene		09.11.95	958163	23.5	23.1	ug/L	2
Toluene		09.11.95	958163	23.4	23.1	ug/L	1
Ethylbenzene		09.11.95	958163	24.2	24.0	ug/L	1
Methyl-tert-butylether		09.11.95	958163	23.1	22.5	ug/L	3
Total Xylene Isomers		09.11.95	958163	72.9	72.0	ug/L	1
TPH (Gasoline Range)		09.11.95	958163	867	1160	ug/L	29 Q
a,a,a-Trifluorotoluene Rep.		09.11.95	958163	50.1	48.7	ug/L	3
a,a,a-Trifluorotoluene Th.		09.11.95	958163	50.0	50.0	ug/L	0

BC ANALYTICAL

ORDER QC REPORT FOR C9509001

DATE REPORTED : 09/14/95

Page 1

MATRIX QC ACCURACY (SPIKES)
BATCH QC REPORT

PARAMETER	SAMPLE NUMBER	DATE ANALYZED	BATCH NUMBER	MS %	MSD %	TRUE RESULT	UNIT
1. TPH	9509002*9						
Benzene		09.06.95	957246	105	104	20.0	ug/L
Toluene		09.06.95	957246	112	109	20.0	ug/L
Ethylbenzene		09.06.95	957246	106	102	20.0	ug/L
Methyl-tert-butylether		09.06.95	957246	127	119	20.0	ug/L
Total Xylene Isomers		09.06.95	957246	118	115	60.0	ug/L
TPH (Gasoline Range)		09.06.95	957246	83	84	1000	ug/L
a,a,a-Trifluorotoluene Rep.		09.06.95	957246	116	113	50.0	ug/L
a,a,a-Trifluorotoluene Th.		09.06.95	957246	100	100	50.0	ug/L
2. TPH:	9509012*1						
Benzene		09.11.95	958163	118	116	20.0	ug/L
Toluene		09.11.95	958163	117	116	20.0	ug/L
Ethylbenzene		09.11.95	958163	121	120	20.0	ug/L
Methyl-tert-butylether		09.11.95	958163	116	113	20.0	ug/L
Total Xylene Isomers		09.11.95	958163	122	120	60.0	ug/L
TPH (Gasoline Range)		09.11.95	958163	87	116	1000	ug/L
a,a,a-Trifluorotoluene Rep.		09.11.95	958163	100	97	50.0	ug/L
a,a,a-Trifluorotoluene Th.		09.11.95	958163	100	100	50.0	ug/L

BC ANALYTICAL

ORDER QC REPORT FOR C9509001

DATE REPORTED : 09/14/95

Page 1

METHOD BLANKS AND REPORTING DETECTION LIMIT (RDL)
FOR BATCHES WHICH INCLUDE THIS ORDER

PARAMETER	DATE ANALYZED	BATCH NUMBER	BLANK RESULT	RDL	UNIT	METHOD
1. TPH	B509006*1					
Date Analyzed	09.05.95	957246	09/05/95	NA	Date	8015M.TX
Benzene	09.05.95	957246	0	0.5	ug/L	8015M.TX
Toluene	09.05.95	957246	0	0.5	ug/L	8015M.TX
Ethylbenzene	09.05.95	957246	0	0.5	ug/L	8015M.TX
Methyl-tert-butylether	09.05.95	957246	0	NA	ug/L	8015M.TX
Total Xylene Isomers	09.05.95	957246	0	0.5	ug/L	8015M.TX
TPH (Gasoline Range)	09.05.95	957246	0	50	ug/L	8015M.TX
a,a,a-Trifluorotoluene Rep.	09.05.95	957246	57.4	NA	ug/L	8015M.TX
a,a,a-Trifluorotoluene Th.	09.05.95	957246	50.0	NA	ug/L	8015M.TX
2. TPH	B509007*1					
Date Analyzed	09.06.95	957246	09/06/95	NA	Date	8015M.TX
Benzene	09.06.95	957246	0	0.5	ug/L	8015M.TX
Toluene	09.06.95	957246	0	0.5	ug/L	8015M.TX
Ethylbenzene	09.06.95	957246	0	0.5	ug/L	8015M.TX
Methyl-tert-butylether	09.06.95	957246	0	NA	ug/L	8015M.TX
Total Xylene Isomers	09.06.95	957246	0	0.5	ug/L	8015M.TX
TPH (Gasoline Range)	09.06.95	957246	0	50	ug/L	8015M.TX
a,a,a-Trifluorotoluene Rep.	09.06.95	957246	56.7	NA	ug/L	8015M.TX
a,a,a-Trifluorotoluene Th.	09.06.95	957246	50.0	NA	ug/L	8015M.TX
3. TPH	B509011*1					
Date Analyzed	09.11.95	958163	09/11/95	NA	Date	8015M.TX
Benzene	09.11.95	958163	0	0.5	ug/L	8015M.TX
Toluene	09.11.95	958163	0.087	0.5	ug/L	8015M.TX
Ethylbenzene	09.11.95	958163	0	0.5	ug/L	8015M.TX
Methyl-tert-butylether	09.11.95	958163	0	NA	ug/L	8015M.TX
Total Xylene Isomers	09.11.95	958163	0.082	0.5	ug/L	8015M.TX
TPH (Gasoline Range)	09.11.95	958163	5.3	50	ug/L	8015M.TX
a,a,a-Trifluorotoluene Rep.	09.11.95	958163	51.6	NA	ug/L	8015M.TX
a,a,a-Trifluorotoluene Th.	09.11.95	958163	50.0	NA	ug/L	8015M.TX

: SURROGATE RECOVERIES :
: BC ANALYTICAL : CORD LAB : 14:34:25 14 SEP 1995 - P. 1 :
=====

METHOD	ANALYTE	BATCH	ANALYZED	REPORTED	TRUE	%REC	FLAG
9509001*1							
8015M.TXa	,a,a-Trifluorotoluene	Re957246	09/05/95	59.2	50.0	118	
9509001*2							
8015M.TXa	,a,a-Trifluorotoluene	Re958163	09/11/95	55.0	50.0	110	
9509001*3							
8015M.TXa	,a,a-Trifluorotoluene	Re958163	09/11/95	54.0	50.0	108	
9509001*4							
8015M.TXa	,a,a-Trifluorotoluene	Re958163	09/12/95	59.2	50.0	118	

SURROGATE RECOVERIES :
 BC ANALYTICAL : CORD LAB : 14:34:26 14 SEP 1995 - P. 1 :

METHOD	ANALYTE	BATCH	ANALYZED	REPORTED	TRUE	%REC	FLAG
9509002*9*R1							
8015M.TXa	a,a-Trifluorotoluene	Re957246	09/06/95	59.6	50.0	119	
9509002*9*S1							
8015M.TXa	a,a-Trifluorotoluene	Re957246	09/06/95	58.1	50.0	116	
9509002*9*S2							
8015M.TXa	a,a-Trifluorotoluene	Re957246	09/06/95	56.7	50.0	113	
9509002*9*T							
8015M.TXa	a,a-Trifluorotoluene	Re957246	09/06/95	50.0	50.0	100	
9509012*1*R1							
8015M.TXa	a,a-Trifluorotoluene	Re958163	09/11/95	51.3	50.0	103	
9509012*1*S1							
8015M.TXa	a,a-Trifluorotoluene	Re958163	09/11/95	50.1	50.0	100	
9509012*1*S2							
8015M.TXa	a,a-Trifluorotoluene	Re958163	09/11/95	48.7	50.0	97	
9509012*1*T							
8015M.TXa	a,a-Trifluorotoluene	Re958163	09/11/95	50.0	50.0	100	
8509006*1*MB							
8015M.TXa	a,a-Trifluorotoluene	Re957246	09/05/95	57.4	50.0	115	
8509007*1*MB							
8015M.TXa	a,a-Trifluorotoluene	Re957246	09/06/95	56.7	50.0	113	
8509011*1*MB							
8015M.TXa	a,a-Trifluorotoluene	Re958163	09/11/95	51.6	50.0	103	
C509010*1*LC							
8015M.TXa	a,a-Trifluorotoluene	Re957246	09/05/95	57.8	50.0	116	
C509010*1*LT							
8015M.TXa	a,a-Trifluorotoluene	Re957246	09/05/95	50.0	50.0	100	
C509011*1*LC							

SURROGATE RECOVERIES :
BC ANALYTICAL : CORD LAB : 14:34:27 14 SEP 1995 - P. 2 :
=====

METHOD	ANALYTE	BATCH	ANALYZED	REPORTED	TRUE	%REC	FLAG
3015M.TXa,a,a-	Trifluorotoluene	Re957246	09/06/95	55.6	50.0	111	
C509011*1*LT							
3015M.TXa,a,a-	Trifluorotoluene	Re957246	09/06/95	50.0	50.0	100	
C509012*1*LC							
3015M.TXa,a,a-	Trifluorotoluene	Re957246	09/06/95	55.5	50.0	111	
C509012*1*LT							
3015M.TXa,a,a-	Trifluorotoluene	Re957246	09/06/95	50.0	50.0	100	
C509018*1*LC							
3015M.TXa,a,a-	Trifluorotoluene	Re958163	09/11/95	51.1	50.0	102	
C509018*1*LT							
3015M.TXa,a,a-	Trifluorotoluene	Re958163	09/11/95	50.0	50.0	100	
C509019*1*LC							
3015M.TXa,a,a-	Trifluorotoluene	Re958163	09/12/95	50.8	50.0	102	
C509019*1*LT							
3015M.TXa,a,a-	Trifluorotoluene	Re958163	09/12/95	50.0	50.0	100	

CHAIN OF CUSTODY RECORD

Client: **GROUNDWATER TECHNOLOGY**
 Address: **21 HALYARD #140**
 City: **SACRAMENTO, CA 95691**

Project or POI: **TES LINCOLN ALAMEDA**
 ID: **020700006**
 Phone #: **(916) 372-4700**

Report attention: **BRIAN GARBER**

Date sampled	Time sampled	Type See key below	Sampled by STEVEN STROM	Sample description	Preserved		Number of containers	Analyses required										Remarks	
					ICE	HCL		BTEX/TPH-G	Hazardous sample Special handling required										
8/31/95	1300			C-EFF	X	X	2	X											-1 Sample condition <u>good</u>
8/31/95	1302			B-BT-1	X	X	2	X											-2
8/31/95	1304			A-INF	X	X	2	X											-3 cooler temp
8/31/95	1306			INF	X	X	2	X											-4 48°C
													624881450						
													Alameda						
													KEP						
													FKEP100LL						
													CC: T. ROSS						

Signature	Print Name	Company	Date	Time
	STEVEN STROM	GROUNDWATER TECHNOLOGY	9/1/95	11:30
	Jan Winder	BCA	9/1/95	11:30

Note: Samples are discarded 30 days after results are reported unless other arrangements are made. Hazardous samples will be returned to client or disposed of at client's expense.

Disposal arrangements: _____

*KEY: AG—Aqueous NA—Nonaqueous SL—Sludge
 GW—Groundwater SO—Soil PE—Petroleum

801 Western Avenue
Glendale, CA 91201
818/247-5737
Fax: 818/247-9797

LOG NO: G95-09-500
Received: 28 SEP 95
Mailed: OCT 3 1995

Mr. Brian Garber
Groundwater Technology, Inc.
1401 Halyard Drive, Suite 140
West Sacramento, California 95691

Purchase Order: 94-1446346+4370
Requisition: 624881450
Project: FKEP1001L

CC: Mr. Timothy Ross

REPORT OF ANALYTICAL RESULTS

Page 1

AQUEOUS

SAMPLE DESCRIPTION	DATE SAMPLED	TPH/BTEX (CADHS/8020)	ANALYTICAL DATA								
			Date Analyzed Date	Dilution Factor Times	TPH-g ug/L	Benzene ug/L	Toluene ug/L	Ethyl-Benzene ug/L	Methyl-tert-butylether ug/L	Total Xylenes Isomers ug/L	Carbon Range
				1	50	0.5	0.5	0.5	10	0.5	
1-C-1ff	09/28/95	09/29/95		1	<50	<0.5	<0.5	<0.5	<10	<0.5	C6-C12
2-B-B1-1	09/28/95	09/29/95		1	<50	<0.5	<0.5	<0.5	<10	<0.5	C6-C12
3-A-Inf	09/28/95	09/29/95		1	80	12	4.0	1.2	<10	8.9	C6-C12
1-Inf	09/28/95	09/29/95		1	290	31	3.6	16	<10	18	C6-C12

Karen Petryna
1127 Lincoln Ave., Alameda
Alameda County

Jane Freemyer
Jane Freemyer, Program Manager

The analytical results within this report relate only to the specific compounds and samples investigated and may not necessarily reflect other apparently similar material from the same or a similar location.

This report shall not be reproduced, except in full, without the written approval of BCA. No use of this report for promotional or advertising purposes is permitted without prior written BCA approval.



AMPLES...	SAMPLE DESCRIPTION..	DETERM.....	DATE..... ANALYZED	METHOD.....	EQUIP.	BATCH..	ID.NO
509500*1	C-Eff	GAS.BTX.TESNC	09.29.95	8015M.TX	536-21	95278	8501
509500*2	B-BT-1	GAS.BTX.TESNC	09.29.95	8015M.TX	536-21	95278	8501
509500*3	A-Inf	GAS.BTX.TESNC	09.29.95	8015M.TX	536-21	95278	8501
509500*4	Inf	GAS.BTX.TESNC	09.29.95	8015M.TX	536-21	95278	8501

**

Notes: Equipment = BC Analytical identification number for a particular piece of analytical equipment.
ID.NO = BC Analytical employee identification number of analyst.

BC ANALYTICAL

ORDER QC REPORT FOR G9509500

DATE REPORTED : 10/03/95

LABORATORY CONTROL STANDARDS
FOR BATCHES WHICH INCLUDE THIS ORDER

PARAMETER	DATE ANALYZED	BATCH NUMBER	LC RESULT	LT RESULT	UNIT	PERCENT RECOVERY
TPH	C510171*1					
Date Analyzed	09.29.95	95278	09/29/95	09/29/95	Date	N/A
Benzene	09.29.95	95278	20.2	15.2	ug/L	133
Toluene	09.29.95	95278	115	97.4	ug/L	118
Ethylbenzene	09.29.95	95278	22.2	20.4	ug/L	109
Total Xylene Isomers	09.29.95	95278	127	119	ug/L	107
TPH (Gasoline Range)	09.29.95	95278	1140	1100	ug/L	104
a,a,a-Trifluorotoluene Rep.	09.29.95	95278	71.8	50.0	ug/L	144
a,a,a-Trifluorotoluene Th.	09.29.95	95278	50.0	50.0	ug/L	100

BC ANALYTICAL

ORDER QC REPORT FOR G9509500

DATE REPORTED : 10/03/95

MATRIX QC PRECISION (DUPLICATE SPIKES)
BATCH QC REPORT

PARAMETER	SAMPLE NUMBER	DATE ANALYZED	BATCH NUMBER	MS RESULT	MSD RESULT	UNIT	RELATIVE % DIFF
TPH	9509454*1						
Date Analyzed		09.29.95	95278	09/29/95	09/29/95	Date	N/A
Benzene		09.29.95	95278	19.9	19.1	ug/L	4
Toluene		09.29.95	95278	116	113	ug/L	3
Ethylbenzene		09.29.95	95278	22.0	21.4	ug/L	3
Total Xylene Isomers		09.29.95	95278	126	125	ug/L	1
TPH (Gasoline Range)		09.29.95	95278	1090	1080	ug/L	1
a,a,a-Trifluorotoluene Rep.		09.29.95	95278	66.3	67.8	ug/L	2
a,a,a-Trifluorotoluene Th.		09.29.95	95278	50.0	50.0	ug/L	0

BC ANALYTICAL

ORDER QC REPORT FOR G9509500

DATE REPORTED : 10/03/95

MATRIX QC ACCURACY (SPIKES)
 BATCH QC REPORT

PARAMETER	SAMPLE NUMBER	DATE ANALYZED	BATCH NUMBER	MS %	MSD %	TRUE RESULT	UNIT	
TPH	9509454*1							
Benzene		09.29.95	95278	131 Q	126 Q	15.2	ug/L	Q
Toluene		09.29.95	95278	119	116	97.4	ug/L	
Ethylbenzene		09.29.95	95278	108	105	20.4	ug/L	
Total Xylene Isomers		09.29.95	95278	106	105	119	ug/L	
TPH (Gasoline Range)		09.29.95	95278	94	93	1160	ug/L	
a,a,a-Trifluorotoluene Rep.		09.29.95	95278	133	136	50.0	ug/L	
a,a,a-Trifluorotoluene Th.		09.29.95	95278	100	100	50.0	ug/L	

BC ANALYTICAL

ORDER QC REPORT FOR G9509500

DATE REPORTED : 10/03/95

METHOD BLANKS AND REPORTING DETECTION LIMIT (RDL)
FOR BATCHES WHICH INCLUDE THIS ORDER

PARAMETER	DATE ANALYZED	BATCH NUMBER	BLANK RESULT	RDL	UNIT	METHOD
TPH	B510092*1					
Date Analyzed	09.29.95	95278	09/29/95	NA	Date	8015M.TX
Benzene	09.29.95	95278	0	0.5	ug/L	8015M.TX
Toluene	09.29.95	95278	0	0.5	ug/L	8015M.TX
Ethylbenzene	09.29.95	95278	0	0.5	ug/L	8015M.TX
Methyl-tert-butylether	09.29.95	95278	0	NA	ug/L	8015M.TX
Total Xylene Isomers	09.29.95	95278	0	0.5	ug/L	8015M.TX
TPH (Gasoline Range)	09.29.95	95278	0	50	ug/L	8015M.TX
a,a,a-Trifluorotoluene Rep.	09.29.95	95278	55.6	NA	ug/L	8015M.TX
a,a,a-Trifluorotoluene Th.	09.29.95	95278	50.0	NA	ug/L	8015M.TX

SURROGATE RECOVERIES :
BC ANALYTICAL : GLEN, LAB : 13:18:45 03 OCT 1995 - P. 1 :
=====

METHOD	ANALYTE	BATCH	ANALYZED	REPORTED	TRUE	%REC	FLAG
509500*1							
015M.TXa	,a,a-Trifluorotoluene	Re95278	09/29/95	56.2	50.0	112	
509500*2							
015M.TXa	,a,a-Trifluorotoluene	Re95278	09/29/95	56.5	50.0	113	
509500*3							
015M.TXa	,a,a-Trifluorotoluene	Re95278	09/29/95	56.1	50.0	112	
509500*4							
015M.TXa	,a,a-Trifluorotoluene	Re95278	09/29/95	56.8	50.0	114	

SURROGATE RECOVERIES :
BC ANALYTICAL : GLEN LAB : 13:18:48 03 OCT 1995 - P. 1 :

=====

ETHOD	ANALYTE	BATCH	ANALYZED	REPORTED	TRUE	%REC	FLAG
509454*1*R1							
015M.TXa	a,a-Trifluorotoluene	Re95278	09/29/95	55.5	50.0	111	
509454*1*S1							
015M.TXa	a,a-Trifluorotoluene	Re95278	09/29/95	66.3	50.0	133	
509454*1*S2							
015M.TXa	a,a-Trifluorotoluene	Re95278	09/29/95	67.8	50.0	136	
509454*1*T							
015M.TXa	a,a-Trifluorotoluene	Re95278	09/29/95	50.0	50.0	100	
510092*1*MB							
015M.TXa	a,a-Trifluorotoluene	Re95278	09/29/95	55.6	50.0	111	
510171*1*LC							
015M.TXa	a,a-Trifluorotoluene	Re95278	09/29/95	71.8	50.0	144	
510171*1*LT							
015M.TXa	a,a-Trifluorotoluene	Re95278	09/29/95	50.0	50.0	100	

CHAIN OF CUSTODY RECORD

BILL TEXACO DIRECT

GROUNDWATER TECHNOLOGY

1401 HUNTERD DR #140

SACRAMENTO, CA

Project or PO#
020700006.05/005
Phone #
(916) 372-4700

Report attention
BRIAN GABER

Sampled by
STEVEN STREM

Number of containers

Analyses required

BTEX/TPH-6

Hazardous sample
Special handling required

waters only!
G9509500

Date sampled	Time sampled	Type See key below	Sample description	PRESERVED			Number of containers	Analyses required				Remarks	
				HCL	IAE	NOA							
9-28-95	1330	AQ	C-EFF	X	X		2	X				-1	1127 Lincoln Ave
	1330	AQ	B-BT-1	X	X		2	X				-2	Alameda
	1335	AQ	A-INF	X	X		2	X				-3	
	1335	AQ	INF	X	X		2	X				-4	
	1400	AIR	EFF			X	1	X					} Airs only! C9509017
	1405	AIR	INF TO 2ND			X	1	X					
9-28-95	1410	AIR	INF			X	1	X					

cc: Tim Ross
624881450
KEP
Alameda
File# 1001L

Relinquishing 8 Vial
vials only - 1/11/01

Signature	Print Name	Company	Date	Time
	STEVEN STREM	GROUNDWATER TECHNOLOGY	9-28-95	1502
	Maria Adnan	BC Analytical	9-28-95	1502
	Maria Adnan	BCA	9-28-95	1700

Note: Samples are discarded 30 days after results are reported unless other arrangements are made
Hazardous samples will be returned to client or disposed of at client's expense

*KEY: AQ—Aqueous NA—Nonaqueous SL—Sludge
GW—Groundwater SO—Soil PE—Petroleum
WW—Wastewater

801 Western Avenue
 Glendale, CA 91201
 818/247-5737
 Fax 818/247-9797

LOG NO: G95-10-608

Received: 31 OCT 95

Mailed : NOV 10 1995

Mr. Brian Gardner
 Groundwater Technology, Inc.
 1401 Holland Drive, Suite 140
 West Sacramento, California 95691

Purchase Order: 94-1446346+4370

Requisition: 624881450
 Project: FKEP1001L

CC: Mr. Timothy Ross

REPORT OF ANALYTICAL RESULTS

Page 1

AQUEOUS

DATE SAMPLED	TPH/BTEX (CADHS/8020)	Date Analyzed	Dilution Factor Times	TPH-g ug/L	Benzene ug/L	Toluene ug/L	Ethyl-Benzene ug/L	Total Xylenes Isomers ug/L	Carbon Range	Methyl-tert-butylether ug/L
			1	50	0.5	0.5	0.5	0.5		10
10/31/95	11/03/95	11/03/95	1	<50	<0.5	<0.5	<0.5	<0.5	C6-C12	<10
10/31/95	11/03/95	11/03/95	1	<50	<0.5	<0.5	<0.5	<0.5	C6-C12	<10
10/31/95	11/03/95	11/03/95	1	<50	8.5	1.1	0.91	3.5	C6-C12	<10
10/31/95	11/03/95	11/03/95	1	1100	210	26	5.4	75	C6-C12	<10

Karen Petryna
 1127 Lincoln Ave., Alameda
 Alameda County

Jane Freemyer
 Jane Freemyer, Laboratory Director

The analytical results within this report relate only to the specific compounds and samples investigated and may not necessarily reflect other apparently similar material from the same or a similar location.

This report shall not be reproduced, except in full, without the written approval of BCA. No use of this report for promotional or advertising purposes is permitted without prior written BCA approval.



ORDER PLACED FOR CLIENT: Groundwater Technology, Inc. 9510608 :
 BC-ANALYTICAL : GLEN LAB : 10:34:45 08 NOV 1995 - P. 1 :
 =====

AMPLES...	SAMPLE DESCRIPTION..	DETERM.....	DATE..... ANALYZED	METHOD.....	EQUIP.	BATCH..	ID.NO
510608*1	C-Eff	GAS.BTX.TESNC	11.03.95	8015M.TX	536-23	955147	8501
510608*2	B-BT-1	GAS.BTX.TESNC	11.03.95	8015M.TX	536-23	955147	8501
510608*3	A-Inf	GAS.BTX.TESNC	11.03.95	8015M.TX	536-23	955147	8501
510608*4	Inf	GAS.BTX.TESNC	11.03.95	8015M.TX	536-23	955147	8501

**

1. Test Equipment - BC Analytical identification number for a particular piece of analytical equipment.
 2. Analyst - BC Analytical employee identification number of analyst.

BC ANALYTICAL

ORDER QC REPORT FOR G9510608

DATE REPORTED : 11/08/95

LABORATORY CONTROL STANDARDS
FOR BATCHES WHICH INCLUDE THIS ORDER

PARAMETER	DATE ANALYZED	BATCH NUMBER	LC RESULT	LT RESULT	UNIT	PERCENT RECOVERY
1. GRO	C511547*1					
Date Analyzed	11.03.95	955147	11/03/95	11/03/95	Date	N/A
Benzene	11.03.95	955147	15.1	15.2	ug/L	99
Toluene	11.03.95	955147	95.3	97.4	ug/L	98
Ethylbenzene	11.03.95	955147	20.4	20.4	ug/L	100
Total Xylene Isomers	11.03.95	955147	123	119	ug/L	103
TPH (Gasoline Range)	11.03.95	955147	1120	1100	ug/L	102
a,a,a-Trifluorotoluene Rep.	11.03.95	955147	58.5	50.0	ug/L	117
a,a,a-Trifluorotoluene Th.	11.03.95	955147	50.0	50.0	ug/L	100
2. GRO	C511618*1					
Date Analyzed	11.03.95	955147	11/03/95	11/03/95	Date	N/A
Benzene	11.03.95	955147	14.1	15.2	ug/L	93
Toluene	11.03.95	955147	88.1	97.4	ug/L	90
Ethylbenzene	11.03.95	955147	19.0	20.4	ug/L	93
Total Xylene Isomers	11.03.95	955147	112	119	ug/L	94
TPH (Gasoline Range)	11.03.95	955147	1050	1100	ug/L	95
a,a,a-Trifluorotoluene Rep.	11.03.95	955147	63.6	50.0	ug/L	127
a,a,a-Trifluorotoluene Th.	11.03.95	955147	50.0	50.0	ug/L	100

BC ANALYTICAL

ORDER QC REPORT FOR G9510608

Page 1

DATE REPORTED : 11/08/95

ADDITIONAL LCS PRECISION (DUPLICATES)
BATCH QC REPORT

PARAMETER	SAMPLE NUMBER	DATE ANALYZED	BATCH NUMBER	LC1 RESULT	LC2 RESULT	UNIT	RELATIVE % DIFF
GRO							
Date Analyzed		11.03.95	955147	11/03/95	11/03/95	Date	N/A
Benzene		11.03.95	955147	15.1	14.1	ug/L	7
Toluene		11.03.95	955147	95.3	88.1	ug/L	8
Ethylbenzene		11.03.95	955147	20.4	19.0	ug/L	7
Total Xylene Isomers		11.03.95	955147	123	112	ug/L	9
TPH (Gasoline Range)		11.03.95	955147	1120	1050	ug/L	6
a,a,a-Trifluorotoluene Rep.		11.03.95	955147	58.5	63.6	ug/L	8
a,a,a-Trifluorotoluene Th.		11.03.95	955147	50.0	50.0	ug/L	0

BC ANALYTICAL

ORDER QC REPORT FOR G9510608

DATE REPORTED : 11/08/95

METHOD BLANKS AND REPORTING DETECTION LIMIT (RDL)
FOR BATCHES WHICH INCLUDE THIS ORDER

PARAMETER	DATE ANALYZED	BATCH NUMBER	BLANK RESULT	RDL	UNIT	METHOD
I. GRO	B511281*1					
Date Analyzed	11.03.95	955147	11/03/95	NA	Date	8015M.TX
Benzene	11.03.95	955147	0	0.5	ug/L	8015M.TX
Toluene	11.03.95	955147	0	0.5	ug/L	8015M.TX
Ethylbenzene	11.03.95	955147	0	0.5	ug/L	8015M.TX
Methyl-tert-butylether	11.03.95	955147	0	NA	ug/L	8015M.TX
Total Xylene Isomers	11.03.95	955147	0	0.5	ug/L	8015M.TX
1PH (Gasoline Range)	11.03.95	955147	0	50	ug/L	8015M.TX
a,a,a-Trifluorotoluene Rep.	11.03.95	955147	56.8	NA	ug/L	8015M.TX
a,a,a-Trifluorotoluene Th.	11.03.95	955147	50.0	NA	ug/L	8015M.TX

SURROGATE RECOVERIES :
BC ANALYTICAL : GLEN LAB : 10:35:39 08 NOV 1995 - P. 1 :

ETHOD	ANALYTE	BATCH	ANALYZED	REPORTED	TRUE	%REC	FLAG
510608*1							
015M.TXa	,a,a-Trifluorotoluene	Re955147	11/03/95	60.1	50.0	120	
510608*2							
015M.TXa	,a,a-Trifluorotoluene	Re955147	11/03/95	55.9	50.0	112	
510608*3							
015M.TXa	,a,a-Trifluorotoluene	Re955147	11/03/95	51.9	50.0	104	
510608*4							
015M.TXa	,a,a-Trifluorotoluene	Re955147	11/03/95	53.1	50.0	106	

METHOD	ANALYTE	BATCH	ANALYZED	REPORTED	TRUE	%REC	FLAG
511281*1*MB							
015M.TXa	a,a,a-Trifluorotoluene	Re955147	11/03/95	56.8	50.0	114	
511547*1*LC							
015M.TXa	a,a,a-Trifluorotoluene	Re955147	11/03/95	58.5	50.0	117	
511547*1*LT							
015M.TXa	a,a,a-Trifluorotoluene	Re955147	11/03/95	50.0	50.0	100	
511618*1*LC							
015M.TXa	a,a,a-Trifluorotoluene	Re955147	11/03/95	63.6	50.0	127	
511618*1*LT							
015M.TXa	a,a,a-Trifluorotoluene	Re955147	11/03/95	50.0	50.0	100	

CHAIN OF CUSTODY RECORD

BCA Log Number

Bill TEXACO DIRECTLY

GROUNDWATER TECHNOLOGY

MACIARI DR #140

SACRAMENTO CA

Project or PO# TES/LINCOLN

020700006

Phone #

(916) 372-4700

Report attention

BRIAN GARBER

Sampled by

STEVEN STROM

Number of containers

Analyses required

BTEX/TPH-G

Hazardous sample
Special handling required

Remarks

Date Sampled

10/31/95 1310

10/31/95 1315

10/31/95 1315

10/31/95 1318

10/31/95

10/31/95

11/3/95

Type
Sample key
below

AQ

AQ

AQ

AQ

AIR

AIR

AIR

Sample description

C-EFF

B-BT-1

A-INF

INF

EFF

INF TO 2ND

INF

PERSEVATION
ICE HCL

X

X

X

X

X

X

X

X

1

1

1

X

X

X

X

X

X

X

-1

-2

-3

-4

waters only!

G9510608

Airs Only!

C9510018

1127 Lincoln, Alameda

Alameda

KEP FKEP1001L

CC: Tim Ross

624881450

Signature

Signature of Steven Strom

Print Name

STEVEN STROM

Company

GROUNDWATER TECH

Date

10/31/95

Time

2:45

10/31/95

5:30

Kimberly Eng

BC Analytical

Kimberly Eng

BC Analytical

Note: Samples are discarded 30 days after results are reported unless other arrangements are made. Hazardous samples will be returned to client or disposed of at client's expense.

Disposal arrangements

*KEY: AQ—Aqueous NA—Nonaqueous SL—Sludge
GW—Groundwater SO—Soil PE—Petroleum
WW—Wastewater

ANALYTICAL

GROUNDWATER TECHNOLOGY

1127 LINCOLN AVE. SACRAMENTO, CA 95811

801 Western Avenue
 Glen Dale, CA 91201
 (918) 211 5233
 Fax: (918) 211 9297

LOG NO: G95-11-309
 Received: 15 NOV 95
 Mailed: NOV 20 1995

Dr. Brian Garber
 Groundwater Technology, Inc.
 1101 Maynard Drive, Suite 140
 West Sacramento, California 95691

Purchase Order: 94-1446346+4370

Requisition: 624881450
 Project: FKPE1001L

CC: Mr. Timothy Ross

REPORT OF ANALYTICAL RESULTS

Page 1

SAMPLE DESCRIPTION	DATE SAMPLED	AQUEOUS		TPH-g ug/L	Benzene ug/L	Toluene ug/L	Ethyl-Benzene ug/L	Methyl-tert-butylether ug/L	Total Xylenes Isomers ug/L	Carbon Range
		TPH/BTEX (CADHS/8020)	Date Analyzed Date							
				50	0.5	0.5	0.5	10	0.5	
11/15/95	11/17/95		1	<50	<0.5	<0.5	<0.5	<10	0.83	C6-C12
11/15/95	11/17/95		1	<50	<0.5	<0.5	<0.5	<10	<0.5	C6-C12
11/15/95	11/17/95		1	62	7.5	2.2	1.3	<10	4.6	C6-C12
11/15/95	11/17/95		1	130	4.5	1.4	0.59	<10	1.9	C6-C12

Elmer Petryna
 1127 Lincoln Ave., Alameda
 Alameda County

Jane Greemyer
 Jane Greemyer, Laboratory Director

The analytical results within this report relate only to the specific compounds and samples investigated and may not necessarily reflect other apparently similar material from the same or a similar location.

This report shall not be reproduced, except in full, without the written approval of BCA. No use of this report for promotional or advertising purposes is permitted without prior written BCA approval.



ORDER PLACED FOR CLIENT: Groundwater Technology, Inc. 9511309 :
BC ANALYTICAL : GLEN LAB : 15:45:31 20 NOV 1995 - P. 1 :
=====

AMPLES...	SAMPLE DESCRIPTION..	DETERM.....	DATE..... ANALYZED	METHOD.....	EQUIP.	BATCH..	ID.NO
511309*1	C-Eff	GAS.BTX.TESNC	11.17.95	8015M.TX	536-21	952110	6843
511309*2	B-BT-1	GAS.BTX.TESNC	11.17.95	8015M.TX	536-21	952110	6843
511309*3	A-Inf	GAS.BTX.TESNC	11.17.95	8015M.TX	536-21	952110	6843
511309*4	Inf	GAS.BTX.TESNC	11.17.95	8015M.TX	536-21	952110	6843

Notes: Equipment

BC Analytical identification number for a particular piece of analytical equipment.

ID.NO

= BC Analytical employee identification number of analyst

BC ANALYTICAL

ORDER QC REPORT FOR G9511309

DATE REPORTED : 11/20/95

Page 1

LABORATORY CONTROL STANDARDS
FOR BATCHES WHICH INCLUDE THIS ORDER

PARAMETER	DATE ANALYZED	BATCH NUMBER	LC RESULT	LT RESULT	UNIT	PERCENT RECOVERY
1. BTEX/GRO		C5111986*1				
Date Analyzed	11.17.95	952110	11/17/95	11/17/95	Date	N/A
Benzene	11.17.95	952110	19.7	15.2	ug/L	130
Toluene	11.17.95	952110	110	97.4	ug/L	113
Ethylbenzene	11.17.95	952110	20.5	20.4	ug/L	100
Total Xylene Isomers	11.17.95	952110	117	119	ug/L	98
TPH (Gasoline Range)	11.17.95	952110	1080	1100	ug/L	98
a,a,a-Trifluorotoluene Rep.	11.17.95	952110	53.9	50.0	ug/L	108
a,a,a-Trifluorotoluene Th.	11.17.95	952110	50.0	50.0	ug/L	100

BC ANALYTICAL

ORDER QC REPORT FOR G9511309

Page 1

DATE REPORTED : 11/20/95

MATRIX QC ACCURACY (SPIKES)
BATCH QC REPORT

PARAMETER	SAMPLE NUMBER	DATE ANALYZED	BATCH NUMBER	MS %	MSD %	TRUE RESULT	UNIT
1. GRO	9511303*1						
Benzene		11.17.95	952110	109	108	16.8	ug/L
Toluene		11.17.95	952110	103	98	99.2	ug/L
Ethylbenzene		11.17.95	952110	90	92	21.0	ug/L
Total Xylene Isomers		11.17.95	952110	82	84	121	ug/L
TPH (Gasoline Range)		11.17.95	952110	98	101	1100	ug/L
a,a,a-Trifluorotoluene Rep.		11.17.95	952110	90	90	50.0	ug/L
a,a,a-Trifluorotoluene Th.		11.17.95	952110	100	100	50.0	ug/L

BC ANALYTICAL

ORDER QC REPORT FOR G9511309

Page 1

DATE REPORTED : 11/20/95

MATRIX QC PRECISION (DUPLICATE SPIKES)
 BATCH QC REPORT

PARAMETER	SAMPLE NUMBER	DATE ANALYZED	BATCH NUMBER	MS RESULT	MSD RESULT	UNIT	RELATIVE % DIFF
BTEX/GRO	9511303*1						
Date Analyzed		11.17.95	952110	11/17/95	11/17/95	Date	N/A
Benzene		11.17.95	952110	18.2	18.0	ug/L	1
Toluene		11.17.95	952110	102	97.7	ug/L	4
Ethylbenzene		11.17.95	952110	18.9	19.4	ug/L	3
Total Xylene Isomers		11.17.95	952110	99.4	102	ug/L	3
TPH (Gasoline Range)		11.17.95	952110	1080	1110	ug/L	3
a,a,a-Trifluorotoluene Rep.		11.17.95	952110	45.0	44.9	ug/L	0
a,a,a-Trifluorotoluene Th.		11.17.95	952110	50.0	50.0	ug/L	0

BC ANALYTICAL

ORDER QC REPORT FOR G9511309

DATE REPORTED : 11/20/95

METHOD BLANKS AND REPORTING DETECTION LIMIT (RDL)
FOR BATCHES WHICH INCLUDE THIS ORDER

PARAMETER	DATE ANALYZED	BATCH NUMBER	BLANK RESULT	RDL	UNIT	METHOD
BTEX/GRO	B5111116*1					
Date Analyzed	11.17.95	952110	11/17/95	NA	Date	8015M
Benzene	11.17.95	952110	0	0.3	ug/L	8015M
Toluene	11.17.95	952110	0.19	0.3	ug/L	8015M
Ethylbenzene	11.17.95	952110	0	0.3	ug/L	8015M
Total Xylene Isomers	11.17.95	952110	0.16	0.6	ug/L	8015M
TPH (Gasoline Range)	11.17.95	952110	0	100	ug/L	8015M
a,a,a-Trifluorotoluene Rep.	11.17.95	952110	51.0	0.5	ug/L	8015M
a,a,a-Trifluorotoluene Th.	11.17.95	952110	50.0	NA	ug/L	8015M

SURROGATE RECOVERIES :

BC ANALYTICAL : GLEN LAB : 16:14:58 20 NOV 1995 - P. 1 :

=====

METHOD	ANALYTE	BATCH	ANALYZED	REPORTED	TRUE	%REC	FLAG
0511309*1							
3015M.TXa	,a,a-Trifluorotoluene	Re952110	11/17/95	48.5	50.0	97	
0511309*2							
3015M.TXa	,a,a-Trifluorotoluene	Re952110	11/17/95	49.9	50.0	100	
0511309*3							
3015M.TXa	,a,a-Trifluorotoluene	Re952110	11/17/95	48.6	50.0	97	
0511309*4							
3015M.TXa	,a,a-Trifluorotoluene	Re952110	11/17/95	47.6	50.0	95	

SURROGATE RECOVERIES :
BC ANALYTICAL : GLEN LAB : 16:15:01 20 NOV 1995 - P. 1 :

```
=====
```

METHOD	ANALYTE	BATCH	ANALYZED	REPORTED	TRUE	%REC	FLAG
0511303*1*R1							
3015M	a,a,a-Trifluorotoluene	Re952110	11/17/95	48.6	50.0	97	
0511303*1*S1							
3015M	a,a,a-Trifluorotoluene	Re952110	11/17/95	45.0	50.0	90	
0511303*1*S2							
3015M	a,a,a-Trifluorotoluene	Re952110	11/17/95	44.9	50.0	90	
0511303*1*T							
3015M	a,a,a-Trifluorotoluene	Re952110	11/17/95	50.0	50.0	100	
05111116*1*MB							
3015M	a,a,a-Trifluorotoluene	Re952110	11/17/95	51.0	50.0	102	
05111986*1*LC							
3015M	a,a,a-Trifluorotoluene	Re952110	11/17/95	53.9	50.0	108	
05111986*1*LT							
3015M	a,a,a-Trifluorotoluene	Re952110	11/17/95	50.0	50.0	100	

