



RECEIVED

By dehloptoxic at 10:42 am, Feb 01, 2007



Atlantic Richfield Company
(a BP affiliated company)

P.O. Box 1257
San Ramon, CA 94583
Phone: (925) 275-3801
Fax: (925) 275-3815

26 January 2007

Re: Fourth Quarter 2006 Ground-Water Monitoring Report
Atlantic Richfield Company Station #374
6407 Telegraph Avenue
Oakland, California
ACEH Case # RO0000078

“I declare, that to the best of my knowledge at the present time, that the information and/or recommendations contained in the attached document are true and correct.”

Submitted by:

Paul Supple
Environmental Business Manger

Prepared for

Mr. Paul Supple
Environmental Business Manager
Atlantic Richfield Company
P.O. Box 1257
San Ramon, California 94583

Prepared by



1324 Mangrove Avenue, Suite 212
Chico, California 95926
(530) 566-1400
www.broadbentinc.com

Fourth Quarter 2006 Ground-Water Monitoring Report
Atlantic Richfield Company Station #374
6407 Telegraph Avenue
Oakland, California

26 January 2007

Project No. 06-08-602

Broadbent & Associates, Inc.
1324 Mangrove Ave., Suite 212
Chico, CA 95926
Voice (530) 566-1400
Fax (530) 566-1401



26 January 2007

Project No. 06-08-602

Atlantic Richfield Company
P.O. Box 1257
San Ramon, CA 94583
Submitted via ENFOS

Attn.: Mr. Paul Supple

Re: Fourth Quarter 2006 Ground-Water Monitoring Report, Atlantic Richfield Company (a BP affiliated company) Station #374, 6407 Telegraph Avenue, Oakland, Alameda County, California. ACEH Case #RO0000078

Dear Mr. Supple:

Attached is the *Fourth Quarter 2006 Ground-Water Monitoring Report* for Atlantic Richfield Company Station #374 (herein referred to as Station #374) located at 6407 Telegraph Avenue, Oakland, California (Property). This report presents results of ground-water monitoring conducted during the Fourth Quarter of 2006.

Should you have questions regarding the work performed or results obtained, please do not hesitate to contact us at (530) 566-1400.

Sincerely,

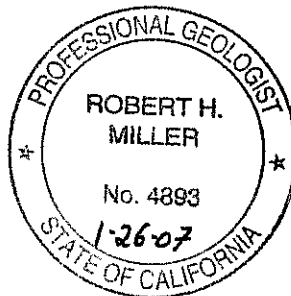
BROADBENT & ASSOCIATES, INC.

A handwritten signature in black ink, appearing to read 'Thomas A. Venus'.

Thomas A. Venus, P.E.
Senior Engineer

A handwritten signature in black ink, appearing to read 'Robert H. Miller'.

Robert H. Miller, P.G., C.HG.
Principal Hydrogeologist



Enclosures

cc: Mr. Steven Plunkett, Alameda County Environmental Health (Submitted via ACEH ftp site)
Electronic copy uploaded to GeoTracker

STATION #374 QUARTERLY GROUND-WATER MONITORING REPORT

Facility: #374	Address:	6407 Telegraph Avenue, Oakland, California
Environmental Business Manager:		Mr. Paul Supple
Consulting Co./Contact Persons:		Broadbent & Associates, Inc.(BAI)/Rob Miller & Tom Venus (530) 566-1400
Consultant Project No.:		06-08-602
Primary Agency/Regulatory ID No.:		Alameda County Environmental Health (ACEH) ACEH Case #RO0000078
Facility Permits/Permitting Agency:		NA

WORK PERFORMED THIS QUARTER (Fourth Quarter 2006):

1. Prepared and submitted Third Quarter 2006 Ground-Water Monitoring Report.
2. Conducted ground-water monitoring/sampling for Fourth Quarter 2006. Work performed on 1 November 2006 by Stratus Environmental, Inc (Stratus).

WORK PROPOSED FOR NEXT QUARTER (First Quarter 2007):

1. Prepared and submitted this Fourth Quarter 2006 Ground-Water Monitoring Report (contained herein).
2. Conduct quarterly ground-water monitoring/sampling for First Quarter 2007.
3. Prepare and submit First Quarter 2007 Ground-Water Monitoring Report.

QUARTERLY RESULTS SUMMARY:

Current phase of project:	Ground-water monitoring/sampling
Frequency of ground-water monitoring:	Quarterly: MW-1, MW-2, MW-3, MW-4, MW-5, MW-6
Frequency of ground-water sampling:	Quarterly: MW-1 Semi-Annually (1Q and 3Q): MW-2 and MW-4 Annually (3Q): MW-3, MW-5, and MW-6
Is free product (FP) present on-site:	No
Current remediation techniques:	NA
Depth to ground water (below TOC):	6.05 ft (MW-6) to 8.67 ft (MW-4)
General ground-water flow direction:	Southwest
Approximate hydraulic gradient:	0.02 ft/ft

DISCUSSION:

Fourth quarter 2006 ground-water monitoring and sampling was conducted at Station #374 on 1 November 2006 by Stratus. Water levels were gauged in the six wells at the Site. No irregularities were noted in the field during this quarter's water level gauging. Depth to water measurements ranged from 6.05 ft at MW-6 to 8.67 ft at MW-4. Resulting ground-water surface elevations ranged from 156.29 ft above mean sea level in well MW-1 to 151.71 ft at well MW-3. Water level elevations were between historic minimum and maximum ranges for each well, as summarized in Table 1. Water level elevations yielded a potentiometric ground-water flow direction and gradient to the southwest at approximately 0.02 ft/ft, consistent with historical data reported in Table 3. Ground-water monitoring field data sheets are provided within Appendix A. Measured depths to ground-water and respective ground-water elevations are summarized in Table 1. Potentiometric ground-water elevation contours are presented in Drawing 1.

Consistent with the current ground-water sampling schedule, water samples were collected from well MW-1 at the Site. No irregularities were reported during sampling. Samples were submitted under chain of custody protocol to Test America Analytical Testing Corporation (Morgan Hill, California), for analysis of Gasoline Range Organics (GRO, C4-12) by the LUFT GCMS Method; for Benzene, Toluene, Ethylbenzene, and Total Xylenes (BTEX) by EPA Method 8260B; and tert-Amyl methyl ether, tert-Butyl alcohol, Di-isopropyl ether, 1,2-Dibromomethane, 1,2-Dichloroethane, Ethanol, Ethyl tert-butyl ether, and Methyl tert-butyl ether (MTBE) by EPA Method 8260B. The GRO concentration for well MW-1 was partly due to an individual peak(s) in the quantitative range. No other irregularities were encountered during laboratory analysis of the samples. Ground-water sampling field data sheets and the laboratory analytical report, including chain of custody documentation, are provided in Appendix A.

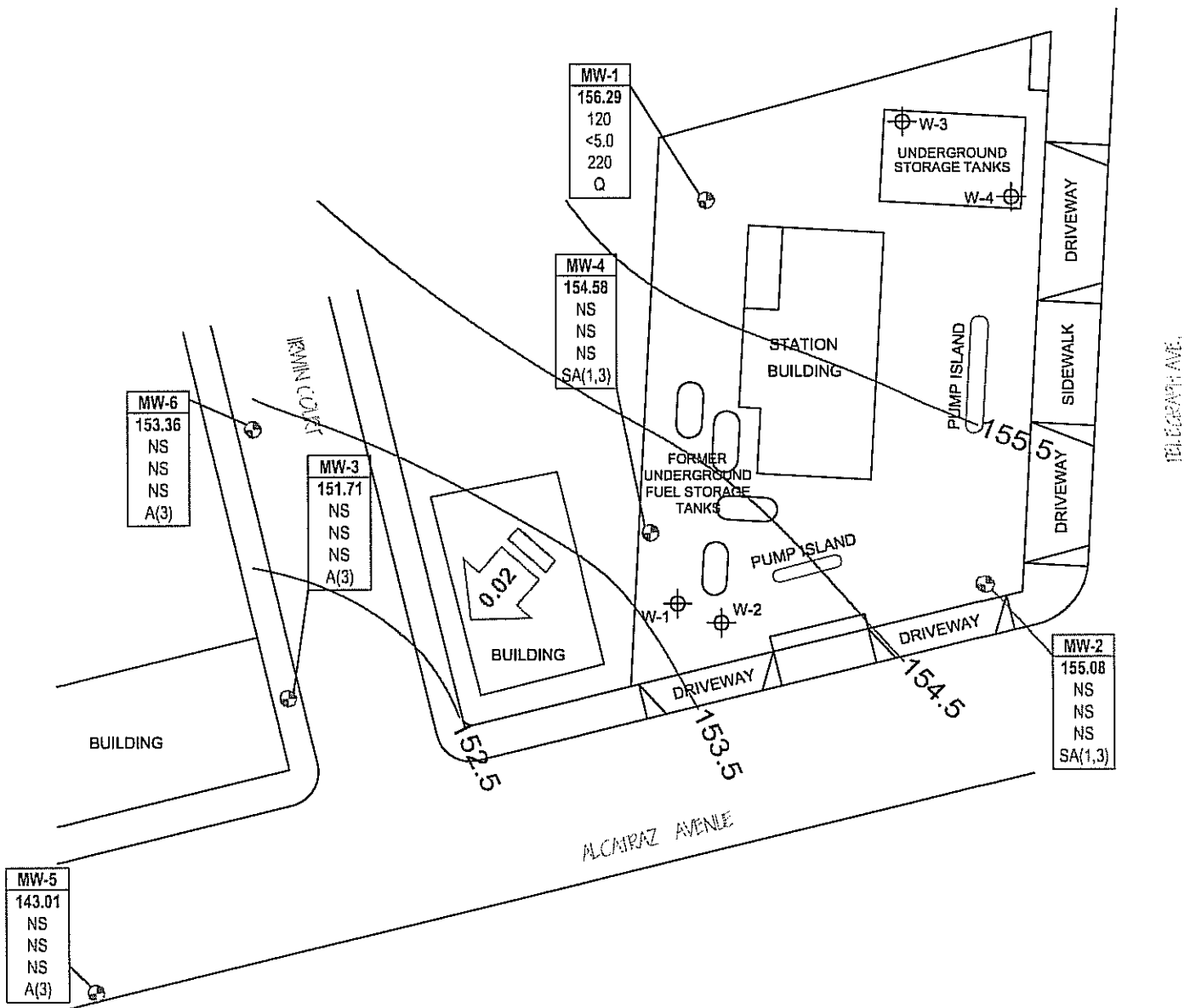
Gasoline range organics (GRO) were detected above the laboratory reporting limits in well MW-1 at a concentration of 120 micrograms per liter ($\mu\text{g/L}$). MTBE was detected above the laboratory reporting limit in well MW-1 at a concentration of 220 $\mu\text{g/L}$. The remaining fuel additives and oxygenates were not detected above their laboratory reporting limits in the one well sampled this quarter. Detected analyte concentrations were within the historic minimum and maximum ranges recorded for each well. Historic laboratory analytical results are summarized in Table 1 and Table 2. The most recent GRO, Benzene, and MTBE concentrations are also presented in Drawing 1. A copy of the Laboratory Analytical Report, including chain-of-custody documentation is provided in Appendix A. Ground-water monitoring data (GEO_WELL) and laboratory analytical results (EDF) were uploaded to the GeoTracker AB2886 database. Upload confirmation pages are provided in Appendix B.

CLOSURE:

The findings presented in this report are based upon: observations of Stratus field personnel (see Appendix A), the points investigated, and results of laboratory tests performed by Test America (Morgan Hill, California). Our services were performed in accordance with the generally accepted standard of practice at the time this report was written. No other warranty, expressed or implied was made. This report has been prepared for the exclusive use of Atlantic Richfield Company. It is possible that variations in soil or ground-water conditions could exist beyond points explored in this investigation. Also, changes in site conditions could occur in the future due to variations in rainfall, temperature, regional water usage, or other factors.

ATTACHMENTS:

- Drawing 1. Ground-Water Elevation Contours and Analytical Summary Map, 1 November 2006, Station #374, 6407 Telegraph Avenue, Oakland, California
- Table 1. Summary of Ground-Water Monitoring Data: Relative Water Elevations and Laboratory Analyses, Station #374, 6407 Telegraph Ave., Oakland, CA
- Table 2. Summary of Fuel Additives Analytical Data, Station #374, 6407 Telegraph Ave., Oakland, CA
- Table 3. Historical Ground-Water Flow Direction and Gradient, Station #374, 6407 Telegraph Ave., Oakland, CA
- Appendix A. Stratus Ground-Water Sampling Data Package (Includes Field Data Sheets and Laboratory Analytical Report with Chain-of-Custody Documentation)
- Appendix B. GeoTracker Upload Confirmation



LEGEND

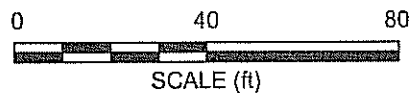
- MONITORING WELL
- TANK PIT MONITORING WELL
- | |
|---------|
| Well |
| ELEV |
| GRO |
| Benzene |
| MTBE |
| A/Q/SA |

 WELL DESIGNATION
- | |
|---------|
| ELEV |
| GRO |
| Benzene |
| MTBE |
| A/Q/SA |

 GROUND-WATER ELEVATION (FT MSL)
- | |
|---------|
| GRO |
| Benzene |
| MTBE |
| A/Q/SA |

 GRO, BENZENE & MTBE CONCENTRATIONS IN GROUND WATER (µg/L)
- | |
|--------|
| A/Q/SA |
|--------|

 SAMPLING FREQUENCY
- < NOT DETECTED AT OR ABOVE LABORATORY LIMITS
- Q SAMPLED QUARTERLY
- SA(1,3) SAMPLED SEMI-ANNUALLY, 1ST & 3RD QUARTERS
- A(3) SAMPLED ANNUALLY, 3RD QUARTER
- NS NOT SAMPLED
- APPROXIMATE GROUND-WATER FLOW AND DIRECTION (FT/FT)
- 152.5 GROUND-WATER ELEVATION CONTOUR (FT MSL)



NOTE: SITE MAP ADAPTED FROM IT CORPORATION FIGURES. SITE DIMENSIONS AND FACILITY LOCATIONS NOT VERIFIED.

Table 1. Summary of Ground-Water Monitoring Data: Relative Water Elevations and Laboratory Analyses

Station #374, 6407 Telegraph Ave., Oakland, CA

Well and Sample Date	P/NP	Comments	TOC (feet msl)	Top of Screen (ft bgs)	Bottom of Screen (ft bgs)	DTW (feet bgs)	Water Level Elevation (feet msl)	Concentrations in (µg/L)						DO (mg/L)	pH
								GRO/TPHg	Benzene	Toluene	Ethyl-Benzene	Total Xylenes	MTBE		
MW-1															
6/20/2000	-		158.91	7.00	27.0	6.86	152.05	--	--	--	--	--	--	--	--
9/28/2000	-		158.91	7.00	27.0	7.5	151.41	--	--	--	--	--	--	--	--
12/17/2000	-		158.91	7.00	27.0	7.49	151.42	--	--	--	--	--	--	--	--
3/23/2001	-		158.91	7.00	27.0	5.9	153.01	<50	<0.5	<0.5	<0.5	<0.5	2,710	--	--
6/21/2001	-		158.91	7.00	27.0	7.45	151.46	--	--	--	--	--	--	--	--
9/23/2001	-		158.91	7.00	27.0	8.46	150.45	--	--	--	--	--	--	--	--
12/31/2001	-		158.91	7.00	27.0	5.5	153.41	--	--	--	--	--	--	--	--
3/21/2002	-		158.91	7.00	27.0	4.71	154.2	<5,000	<50	<50	<50	<50	2,000	--	--
4/17/2002	-		158.91	7.00	27.0	5.54	153.37	--	--	--	--	--	--	--	--
8/12/2002	-		158.91	7.00	27.0	7.77	151.14	--	--	--	--	--	--	--	--
12/6/2002	-		158.91	7.00	27.0	7.65	151.26	--	--	--	--	--	--	--	--
1/29/2003	-	b	158.91	7.00	27.0	5.88	153.03	--	--	--	--	--	--	--	--
5/23/2003	-		158.91	7.00	27.0	5.62	153.29	<10,000	<100	<100	<100	<100	1,600	1.3	7.1
9/4/2003	-		158.91	7.00	27.0	7.85	151.06	--	--	--	--	--	--	--	--
11/20/2003	P		158.91	7.00	27.0	8.17	150.74	1,600	<10	<10	<10	<10	1,500	1.7	6.7
02/02/2004	P	f	164.57	7.00	27.0	6.71	157.86	--	--	--	--	--	--	1.0	--
05/14/2004	P		164.57	7.00	27.0	7.08	157.49	<2,500	<25	<25	<25	<25	1,200	1.4	6.6
09/02/2004	P		164.57	7.00	27.0	8.12	156.45	580	<5.0	<5.0	<5.0	<5.0	660	3.8	6.7
11/04/2004	P		164.57	7.00	27.0	7.38	157.19	1,700	<10	<10	<10	<10	580	6.0	6.5
02/08/2005	P		164.57	7.00	27.0	6.60	157.97	<1,000	<10	<10	<10	<10	610	0.71	6.5
05/09/2005	P	e	164.57	7.00	27.0	6.84	157.73	540	<5.0	<5.0	<5.0	5.5	620	3.12	6.6
08/11/2005	P		164.57	7.00	27.0	7.36	157.21	540	<2.5	<2.5	<2.5	4.0	390	0.8	6.6
11/18/2005	P	e	164.57	7.00	27.0	8.02	156.55	350	<2.5	<2.5	<2.5	<2.5	340	2.6	6.7
02/16/2006	P	c	164.57	7.00	27.0	6.44	158.13	350	<2.5	<2.5	<2.5	<2.5	340	1.6	6.7
5/30/2006	P		164.57	7.00	27.0	6.87	157.70	270	<2.5	<2.5	<2.5	<2.5	420	4.73	6.4
8/24/2006	P		164.57	7.00	27.0	7.75	156.82	95	<5.0	<5.0	<5.0	<5.0	180	0.65	6.9
11/1/2006	P		164.57	7.00	27.0	8.28	156.29	120	<5.0	<5.0	<5.0	<5.0	220	1.65	7.07
MW-2															
6/20/2000	-		157.92	7.00	27.0	7.67	150.25	--	--	--	--	--	--	--	--
9/28/2000	-		157.92	7.00	27.0	8.51	149.41	--	--	--	--	--	--	--	--

Table 1. Summary of Ground-Water Monitoring Data: Relative Water Elevations and Laboratory Analyses

Station #374, 6407 Telegraph Ave., Oakland, CA

Well and Sample Date	P/NP	Comments	TOC (feet msl)	Top of Screen (ft bgs)	Bottom of Screen (ft bgs)	DTW (feet bgs)	Water Level Elevation (feet msl)	Concentrations in (µg/L)						DO (mg/L)	pH
								GRO/TPHg	Benzene	Toluene	Ethyl-Benzene	Total Xylenes	MTBE		
MW-2 Cont.															
12/17/2000	—		157.92	7.00	27.0	8.14	149.78	—	—	—	—	—	—	—	—
3/23/2001	—		157.92	7.00	27.0	7.21	150.71	<50	<0.5	<0.5	<0.5	<0.5	<2.5	—	—
6/21/2001	—		157.92	7.00	27.0	7.99	149.93	—	—	—	—	—	—	—	—
9/23/2001	—		157.92	7.00	27.0	8.52	149.4	—	—	—	—	—	—	—	—
12/31/2001	—		157.92	7.00	27.0	6.01	151.91	—	—	—	—	—	—	—	—
3/21/2002	—		157.92	7.00	27.0	5.95	151.97	<50	<0.5	<0.5	<0.5	<0.5	45	—	—
4/17/2002	—		157.92	7.00	27.0	6.45	151.47	—	—	—	—	—	—	—	—
8/12/2002	—		157.92	7.00	27.0	8.08	149.84	—	—	—	—	—	—	—	—
12/6/2002	—		157.92	7.00	27.0	8.29	149.63	—	—	—	—	—	—	—	—
1/29/2003	—	b	157.92	7.00	27.0	7.22	150.7	—	—	—	—	—	—	—	—
5/23/2003	—		157.92	7.00	27.0	6.85	151.07	<50	<0.50	<0.50	<0.50	<0.50	55	1.4	7.2
9/4/2003	—		157.92	7.00	27.0	7.94	149.98	—	—	—	—	—	—	—	—
11/20/2003	—		157.92	7.00	27.0	8.05	149.87	—	—	—	—	—	—	—	—
02/02/2004	P	f	163.46	7.00	27.0	7.00	156.46	74	<0.50	<0.50	<0.50	<0.50	37	1.1	8.9
05/14/2004	—		163.46	7.00	27.0	7.97	155.49	—	—	—	—	—	—	—	—
09/02/2004	P		163.46	7.00	27.0	8.19	155.27	<250	<2.5	<2.5	<2.5	<2.5	67	2.7	6.9
11/04/2004	—		163.46	7.00	27.0	7.54	155.92	—	—	—	—	—	—	—	—
02/08/2005	P		163.46	7.00	27.0	6.72	156.74	<50	<0.50	<0.50	<0.50	<0.50	30	0.86	6.7
05/09/2005	—		163.46	7.00	27.0	7.16	156.30	—	—	—	—	—	—	—	—
08/11/2005	P		163.46	7.00	27.0	7.85	155.61	<50	<0.50	<0.50	<0.50	<0.50	35	1.0	6.6
11/18/2005	—		163.46	7.00	27.0	8.23	155.23	—	—	—	—	—	—	—	—
02/16/2006	P		163.46	7.00	27.0	6.82	156.64	<50	<0.50	<0.50	<0.50	<0.50	39	1.3	7.0
5/30/2006	—		163.46	7.00	27.0	7.23	156.23	—	—	—	—	—	—	—	—
8/24/2006	P		163.46	7.00	27.0	8.00	155.46	60	<0.50	<0.50	<0.50	<0.50	25	0.90	6.8
11/1/2006	—		163.46	7.00	27.0	8.38	155.08	—	—	—	—	—	—	—	—
MW-3															
6/20/2000	—		153.64	7.00	27.0	6.42	147.22	<50	<0.5	<0.5	<0.5	<1.0	<10	—	—
9/28/2000	—		153.64	7.00	27.0	7.31	146.33	—	—	—	—	—	—	—	—
12/17/2000	—		153.64	7.00	27.0	6.45	147.19	<50	<0.5	<0.5	<0.5	<0.5	<2.5	—	—
3/23/2001	—		153.64	7.00	27.0	6.01	147.63	—	—	—	—	—	—	—	—

Table 1. Summary of Ground-Water Monitoring Data: Relative Water Elevations and Laboratory Analyses

Station #374, 6407 Telegraph Ave., Oakland, CA

Well and Sample Date	P/NP	Comments	TOC (feet msl)	Top of Screen (ft bgs)	Bottom of Screen (ft bgs)	DTW (feet bgs)	Water Level Elevation (feet msl)	Concentrations in (µg/L)					DO (mg/L)	pH	
								GRO/TPHg	Benzene	Toluene	Ethyl-Benzene	Total Xylenes			MTBE
MW-3 Cont.															
6/21/2001	—		153.64	7.00	27.0	6.8	146.84	110	5.5	<0.5	5.4	4.1	2.5	—	—
9/23/2001	—		153.64	7.00	27.0	7.32	146.32	—	—	—	—	—	—	—	—
12/31/2001	—		153.64	7.00	27.0	4.48	149.16	<50	<0.5	<0.5	<0.5	<0.5	4.9	—	—
3/21/2002	—		153.64	7.00	27.0	4.36	149.28	—	—	—	—	—	—	—	—
4/17/2002	—		153.64	7.00	27.0	5.31	148.33	<50	<0.5	<0.5	<0.5	<0.5	8.7	—	—
8/12/2002	—		153.64	7.00	27.0	7	146.64	—	—	—	—	—	—	—	—
12/6/2002	—		153.64	7.00	27.0	7.32	146.32	<50	<0.5	<0.5	<0.5	<0.5	6.2	1.4	6.7
1/29/2003	—	b	153.64	7.00	27.0	6.07	147.57	—	—	—	—	—	—	—	—
5/23/2003	—		153.64	7.00	27.0	6.45	147.19	<50	<0.50	<0.50	<0.50	<0.50	1.6	0.9	7.7
9/4/2003	—	c	153.64	7.00	27.0	6.93	146.71	—	—	—	—	—	—	—	—
11/20/2003	—	c	153.64	7.00	27.0	7.04	146.60	—	—	—	—	—	—	—	—
02/02/2004	—	f	159.21	7.00	27.0	5.92	153.29	—	—	—	—	—	—	—	—
05/14/2004	—		159.21	7.00	27.0	7.52	151.69	—	—	—	—	—	—	—	—
09/02/2004	P		159.21	7.00	27.0	7.19	152.02	<50	<0.50	<0.50	<0.50	<0.50	6.5	9.3	8.9
11/04/2004	—		159.21	7.00	27.0	6.40	152.81	—	—	—	—	—	—	—	—
02/08/2005	—		159.21	7.00	27.0	6.01	153.20	—	—	—	—	—	—	—	—
05/09/2005	—		159.21	7.00	27.0	6.74	152.47	—	—	—	—	—	—	—	—
08/11/2005	P		159.21	7.00	27.0	6.77	152.44	<50	<0.50	<0.50	<0.50	<0.50	11	1.9	6.5
11/18/2005	—		159.21	7.00	27.0	7.83	151.38	—	—	—	—	—	—	—	—
02/16/2006	—		159.21	7.00	27.0	7.26	151.95	—	—	—	—	—	—	—	—
5/30/2006	—		159.21	7.00	27.0	5.82	153.39	—	—	—	—	—	—	—	—
8/24/2006	P		159.21	7.00	27.0	7.00	152.21	<50	<0.50	<0.50	<0.50	<0.50	7.6	1.15	6.4
11/1/2006	—		159.21	7.00	27.0	7.50	151.71	—	—	—	—	—	—	—	—
MW-4															
6/20/2000	—	c	156.53	7.00	27.0	7.5	149.03	20,000	5,100	440	1,000	1,700	<250	—	—
9/28/2000	—		156.53	7.00	27.0	8.2	148.33	—	—	—	—	—	—	—	—
12/17/2000	—		156.53	7.00	27.0	8.11	148.42	4,320	1,240	<20	27.2	249	<100	—	—
3/23/2001	—		156.53	7.00	27.0	6.69	149.84	—	—	—	—	—	—	—	—
6/21/2001	—		156.53	7.00	27.0	8.01	148.52	2,800	470	16	19	160	130	—	—
9/23/2001	—		156.53	7.00	27.0	8.91	147.62	—	—	—	—	—	—	—	—

**Table 1. Summary of Ground-Water Monitoring Data: Relative Water Elevations and Laboratory Analyses
Station #374, 6407 Telegraph Ave., Oakland, CA**

Well and Sample Date	P/NP	Comments	TOC (feet msl)	Top of Screen (ft bgs)	Bottom of Screen (ft bgs)	DTW (feet bgs)	Water Level Elevation (feet msl)	Concentrations in (µg/L)						DO (mg/L)	pH
								GRO/TPHg	Benzene	Toluene	Ethyl-Benzene	Total Xylenes	MTBE		
MW-4 Cont.															
12/31/2001	--		156.53	7.00	27.0	4.42	152.11	4,600	1,500	100	160	210	160	--	--
3/21/2002	--		156.53	7.00	27.0	4.98	151.55	--	--	--	--	--	--	--	--
4/17/2002	--		156.53	7.00	27.0	6.23	150.3	7,100	2,200	110	290	450	<250	--	--
8/12/2002	--		156.53	7.00	27.0	8.24	148.29	--	--	--	--	--	--	--	--
12/6/2002	--	a	156.53	7.00	27.0	8.42	148.11	1,500	410	6.8	20	29	43	1.1	6.7
1/29/2003	--	b	156.53	7.00	27.0	7.2	149.33	--	--	--	--	--	--	--	--
5/23/2003	--		156.53	7.00	27.0	7.18	149.35	<5,000	1,300	89	210	260	<50	1.4	6.9
9/4/2003	--	c	156.53	7.00	27.0	8.15	148.38	--	--	--	--	--	--	--	--
11/20/2003	--	c	156.53	7.00	27.0	8.73	147.80	--	--	--	--	--	--	--	--
02/02/2004	P	c, f, g	163.25	7.00	27.0	6.25	157.00	980	280	21	29	38	29	1.4	10.6
05/14/2004	--	g	163.25	7.00	27.0	8.38	154.87	--	--	--	--	--	--	--	--
09/02/2004	P	g	163.25	7.00	27.0	8.36	154.89	260	11	<1.0	5.5	14	28	2.4	7.4
11/04/2004	--	c, g	163.25	7.00	27.0	7.71	155.54	--	--	--	--	--	--	--	--
02/08/2005	P	g	163.25	7.00	27.0	6.27	156.98	7,500	1,700	320	480	920	45	0.65	6.5
05/09/2005	--	g	163.25	7.00	27.0	5.90	157.35	--	--	--	--	--	--	--	--
08/11/2005	P	g	163.25	7.00	27.0	7.96	155.29	3,100	1,100	41	160	110	32	0.6	6.5
11/18/2005	--	g	163.25	7.00	27.0	8.57	154.68	--	--	--	--	--	--	--	--
02/16/2006	P	g	163.25	7.00	27.0	6.28	156.97	9,400	1,800	130	600	420	35	0.5	6.8
5/30/2006	--	g	163.25	7.00	27.0	7.02	156.23	--	--	--	--	--	--	--	--
8/24/2006	P	g	162.47	7.00	27.0	8.26	154.21	3,600	1,400	21	110	70	39	1.00	6.8
11/1/2006	--		163.25	7.00	27.0	8.67	154.58	--	--	--	--	--	--	--	--
MW-5															
6/20/2000	--		151.33	10.00	23.0	7.84	143.49	<50	<0.5	<0.5	<0.5	<1.0	<10	--	--
9/28/2000	--		151.33	10.00	23.0	8.37	142.96	<50	<0.5	<0.5	<0.5	<0.5	<2.5	--	--
12/17/2000	--		151.33	10.00	23.0	8.36	142.97	<50	<0.5	<0.5	<0.5	<0.5	<2.5	--	--
3/23/2001	--		151.33	10.00	23.0	7.55	143.78	<50	<0.5	<0.5	<0.5	<0.5	<2.5	--	--
6/21/2001	--		151.33	10.00	23.0	8.2	143.13	<50	<0.5	<0.5	<0.5	<0.5	<2.5	--	--
9/23/2001	--		151.33	10.00	23.0	8.68	142.65	<50	<0.5	<0.5	<0.5	<0.5	<2.5	--	--
12/31/2001	--		151.33	10.00	23.0	7.57	143.76	<50	<0.5	<0.5	<0.5	<0.5	<2.5	--	--
3/21/2002	--		151.33	10.00	23.0	6.12	145.21	<50	<0.5	<0.5	<0.5	<0.5	3.2	--	--

Table 1. Summary of Ground-Water Monitoring Data: Relative Water Elevations and Laboratory Analyses
Station #374, 6407 Telegraph Ave., Oakland, CA

Well and Sample Date	P/NP	Comments	TOC (feet msl)	Top of Screen (ft bgs)	Bottom of Screen (ft bgs)	DTW (feet bgs)	Water Level Elevation (feet msl)	Concentrations in (µg/L)						DO (mg/L)	pH
								GRO/TPHg	Benzene	Toluene	Ethyl-Benzene	Total Xylenes	MTBE		
MW-5 Cont.															
4/17/2002	—		151.33	10.00	23.0	6.61	144.72	<50	<0.5	<0.5	<0.5	<0.5	<2.5	—	—
8/12/2002	—		151.33	10.00	23.0	8.14	143.19	<50	<0.5	<0.5	<0.5	<0.5	<2.5	4.1	7.6
12/6/2002	—		151.33	10.00	23.0	8.65	142.68	<50	<0.5	<0.5	<0.5	<0.5	<2.5	1.1	6.8
1/29/2003	—	b	151.33	10.00	23.0	7.22	144.11	<50	<0.5	<0.5	<0.5	<0.5	<0.5	1	6.6
5/23/2003	—		151.33	10.00	23.0	7.31	144.02	<50	<0.50	<0.50	<0.50	<0.50	<0.50	1.1	6.6
9/4/2003	—		151.33	10.00	23.0	9.5	141.83	<50	<0.50	<0.50	<0.50	<0.50	<0.50	3.2	6.7
11/20/2003	—		151.33	10.00	23.0	8.31	143.02	—	—	—	—	—	—	—	—
02/02/2004	—	c, f, h	151.33	10.00	23.0	6.92	144.41	—	—	—	—	—	—	—	—
05/14/2004	—	h	151.33	10.00	23.0	8.56	142.77	—	—	—	—	—	—	—	—
09/02/2004	P	h	151.33	10.00	23.0	8.79	142.54	<50	<0.50	<0.50	<0.50	<0.50	<0.50	3.5	6.8
11/04/2004	—	c, h	151.33	10.00	23.0	8.33	143.00	—	—	—	—	—	—	—	—
02/08/2005	—	h	151.33	10.00	23.0	7.28	144.05	—	—	—	—	—	—	—	—
05/09/2005	—	h	151.33	10.00	23.0	8.19	143.14	—	—	—	—	—	—	—	—
08/11/2005	P	h	151.33	10.00	23.0	8.39	142.94	<50	<0.50	<0.50	<0.50	<0.50	<0.50	1.2	6.6
11/18/2005	—	h	151.33	10.00	23.0	11.25	140.08	—	—	—	—	—	—	—	—
02/16/2006	—	h	151.33	10.00	23.0	9.22	142.11	—	—	—	—	—	—	—	—
5/30/2006	—	h	151.33	10.00	23.0	7.52	143.81	—	—	—	—	—	—	—	—
8/24/2006	P	h	—	10.00	23.0	7.95	—	<50	<0.50	<0.50	<0.50	<0.50	<0.50	2.60	6.6
11/1/2006	—		151.33	10.00	23.0	8.32	143.01	—	—	—	—	—	—	—	—
MW-6															
6/20/2000	—		153.84	5.00	15.0	4.79	149.05	—	—	—	—	—	—	—	—
9/28/2000	—		153.84	5.00	15.0	5.39	148.45	—	—	—	—	—	—	—	—
12/17/2000	—		153.84	5.00	15.0	4.71	149.13	—	—	—	—	—	—	—	—
3/23/2001	—		153.84	5.00	15.0	4.69	149.15	<50	<0.5	<0.5	<0.5	<0.5	<2.5	—	—
6/21/2001	—		153.84	5.00	15.0	5.22	148.62	—	—	—	—	—	—	—	—
9/23/2001	—		153.84	5.00	15.0	5.4	148.44	—	—	—	—	—	—	—	—
12/31/2001	—		153.84	5.00	15.0	3.95	149.89	—	—	—	—	—	—	—	—
3/21/2002	—		153.84	5.00	15.0	2.94	150.9	<50	<0.5	<0.5	<0.5	<0.5	5.2	—	—
4/17/2002	—		153.84	5.00	15.0	5.11	148.73	—	—	—	—	—	—	—	—
8/12/2002	—		153.84	5.00	15.0	5.23	148.61	—	—	—	—	—	—	—	—

Table 1. Summary of Ground-Water Monitoring Data: Relative Water Elevations and Laboratory Analyses

Station #374, 6407 Telegraph Ave., Oakland, CA

Well and Sample Date	P/NP	Comments	TOC (feet msl)	Top of Screen (ft bgs)	Bottom of Screen (ft bgs)	DTW (feet bgs)	Water Level Elevation (feet msl)	Concentrations in (µg/L)						DO (mg/L)	pH
								GRO/TPHg	Benzene	Toluene	Ethyl-Benzene	Total Xylenes	MTBE		
MW-6 Cont.															
12/6/2002	--		153.84	5.00	15.0	5.29	148.55	--	--	--	--	--	--	--	--
1/29/2003	--	b	153.84	5.00	15.0	4.79	149.05	--	--	--	--	--	--	--	--
5/23/2003	--		153.84	5.00	15.0	4.31	149.53	<50	<0.50	<0.50	<0.50	<0.50	9.4	1	6.7
09/04/03	--	d	153.84	5.00	15.0	--	--	--	--	--	--	--	--	--	--
11/20/2003	--		153.84	5.00	15.0	6.31	147.53	--	--	--	--	--	--	--	--
02/02/2004	--		159.41	5.00	15.0	4.78	154.63	--	--	--	--	--	--	--	--
05/14/2004	--		159.41	5.00	15.0	6.29	153.12	--	--	--	--	--	--	--	--
09/02/2004	--	d	159.41	5.00	15.0	5.79	153.62	--	--	--	--	--	--	--	--
11/04/2004	--	d	159.41	5.00	15.0	--	--	--	--	--	--	--	--	--	--
02/08/2005	--		159.41	5.00	15.0	5.13	154.28	--	--	--	--	--	--	--	--
05/09/2005	--		159.41	5.00	15.0	4.52	154.89	--	--	--	--	--	--	--	--
08/11/2005	P		159.41	5.00	15.0	5.02	154.39	<50	<0.50	<0.50	<0.50	<0.50	7.9	2.1	6.6
11/18/2005	--		159.41	5.00	15.0	6.31	153.10	--	--	--	--	--	--	--	--
02/16/2006	--		159.41	5.00	15.0	4.24	155.17	--	--	--	--	--	--	--	--
5/30/2006	--		159.41	5.00	15.0	4.45	154.96	--	--	--	--	--	--	--	--
8/24/2006	P		159.41	5.00	15.0	5.18	154.23	<50	<0.50	<0.50	<0.50	<0.50	12	3.4	6.8
11/1/2006	--		159.41	5.00	15.0	6.05	153.36	--	--	--	--	--	--	--	--

SYMBOLS AND ABBREVIATIONS:

-- = Not analyzed/applicable/measured/available
< = Not detected at or above laboratory reporting limit
DO = Dissolved oxygen
DTW = Depth to water in ft bgs
ft bgs = Feet below ground surface
ft MSL = Feet above mean sea level
GRO = Gasoline range organics
GWE = Groundwater elevation measured in ft MSL
mg/L = Milligrams per liter
MTBE = Methyl tert-butyl ether
NP = Well was not purged prior to sampling
P = Well was purged prior to sampling
TOC = Top of casing measured in ft MSL
TPH-g = Total petroleum hydrocarbons as gasoline
µg/L = Micrograms per liter
BTEX = Benzene, toluene, ethylbenzene and xylenes

FOOTNOTES:

a = Chromatogram pattern: Gasoline C6-C10 for GRO/TPH-g.
b = Beginning this quarter, groundwater samples were analyzed by EPA method 8260B for TPH-g, BTEX, and fuel oxygenates.
c = Wells gauged with ORC sock in well.
d = Well inaccessible
e = The hydrocarbon result for GRO was partly due to individual peaks in the quantitative range.
f = Well resurveyed on 1/27/2004
g = Upon review of survey data (1/27/2004), TOC elevation for MW-4 is actually 162.47 ft.
h = Upon review of survey data (1/27/2004), MW-5 was not surveyed from the TOC. MW-5 was surveyed from the pavement due to inaccessibility to the TOC. Therefore, survey data for MW-5 from the TOC is unavailable.

NOTES:

Beginning in the fourth quarter 2003, the laboratory modified the reported analyte list. TPH-g was changed to GRO. The resulting data may be impacted by the potential of non-TPH-g analytes within the requested fuel range resulting in a higher concentration being reported.

Beginning in the second quarter 2004, the carbon range for GRO was changed from C6-C10 to C4-C12.

Values for DO and pH were obtained through field measurements.

The DTW's and TOC's for wells MW-5 and MW-6 were taken from Delta Environmental sampling sheets because the well logs were not available.

Note: The data within this table collected prior to April 2006 was provided to Broadbent & Associates, Inc. by Atlantic Richfield Company and their previous consultants. Broadbent & Associates, Inc. has not verified the accuracy of this information.

Table 2. Summary of Fuel Additives Analytical Data
Station #374, 6407 Telegraph Ave., Oakland, CA

Well and Sample Date	Concentrations in (µg/L)								Comments
	Ethanol	TBA	MTBE	DIPE	ETBE	TAME	1,2-DCA	EDB	
MW-1									
5/23/2003	<20,000	<4,000	1,600	<100	<100	<100	--	--	
11/20/2003	<2,000	<400	1,500	<10	<10	<10	--	--	a
05/14/2004	<5,000	<1,000	1,200	<25	<25	<25	<25	<25	
09/02/2004	<1,000	<200	660	<5.0	<5.0	<5.0	<5.0	<5.0	
11/04/2004	<2,000	<400	580	<10	<10	<10	<10	<10	
02/08/2005	<2,000	<400	610	<10	<10	<10	<10	<10	
05/09/2005	<1,000	<200	620	<5.0	<5.0	<5.0	<5.0	<5.0	a
08/11/2005	<500	250	390	<2.5	<2.5	2.6	<2.5	<2.5	a
11/18/2005	<500	<100	340	<2.5	<2.5	<2.5	<2.5	<2.5	a
02/16/2006	<1,500	<100	340	<2.5	<2.5	<2.5	<2.5	<2.5	
5/30/2006	<1,500	<100	420	<2.5	<2.5	<2.5	<2.5	<2.5	a
8/24/2006	<3,000	<200	180	<5.0	<5.0	<5.0	<5.0	<5.0	
11/1/2006	<3,000	<200	220	<5.0	<5.0	<5.0	<5.0	<5.0	a
MW-2									
5/23/2003	<100	<20	55	<0.50	<0.50	0.53	--	--	
02/02/2004	<100	<20	37	<0.50	<0.50	<0.50	<0.50	<0.50	
09/02/2004	<500	<100	67	<2.5	<2.5	<2.5	<2.5	<2.5	
02/08/2005	<100	<20	30	<0.50	<0.50	<0.50	<0.50	<0.50	
08/11/2005	<100	<20	35	<0.50	<0.50	<0.50	<0.50	<0.50	a
02/16/2006	<300	<20	39	<0.50	<0.50	<0.50	<0.50	<0.50	
8/24/2006	<300	<20	25	<0.50	<0.50	<0.50	<0.50	<0.50	
MW-3									
5/23/2003	<100	<20	1.6	<0.50	<0.50	<0.50	--	--	
09/02/2004	<100	<20	6.5	<0.50	<0.50	<0.50	<0.50	<0.50	
08/11/2005	<100	<20	11	<0.50	<0.50	<0.50	<0.50	<0.50	a
8/24/2006	<300	<20	7.6	<0.50	<0.50	<0.50	<0.50	<0.50	
MW-4									
5/23/2003	<10,000	<2,000	<50	<50	<50	<50	--	--	
02/02/2004	<500	<100	29	<2.5	<2.5	2.6	<2.5	<2.5	
09/02/2004	<200	<40	28	<1.0	<1.0	<1.0	<1.0	<1.0	

**Table 2. Summary of Fuel Additives Analytical Data
Station #374, 6407 Telegraph Ave., Oakland, CA**

Well and Sample Date	Concentrations in (µg/L)								Comments
	Ethanol	TBA	MTBE	DIPE	ETBE	TAME	1,2-DCA	EDB	
MW-4 Cont.									
02/08/2005	<5,000	<1,000	45	<25	<25	<25	<25	<25	
08/11/2005	<2,000	<400	32	<10	<10	<10	<10	<10	
02/16/2006	<6,000	<400	35	<10	<10	<10	<10	<10	
8/24/2006	<1,500	<100	39	<2.5	<2.5	<2.5	<2.5	<2.5	
MW-5									
1/29/2003	<40	<20	<0.50	<0.50	<0.50	<0.50	--	--	
5/23/2003	<100	<20	<0.50	<0.50	<0.50	<0.50	--	--	
9/4/2003	<100	<20	<0.50	<0.50	<0.50	<0.50	<0.50	<0.50	
09/02/2004	<100	<20	<0.50	<0.50	<0.50	<0.50	<0.50	<0.50	
08/11/2005	<100	<20	<0.50	<0.50	<0.50	<0.50	<0.50	<0.50	
8/24/2006	<300	<20	<0.50	<0.50	<0.50	<0.50	<0.50	<0.50	
MW-6									
5/23/2003	<100	<20	9.4	<0.50	<0.50	<0.50	--	--	
08/11/2005	<100	<20	7.9	<0.50	<0.50	<0.50	<0.50	<0.50	
8/24/2006	<300	<20	12	<0.50	<0.50	<0.50	<0.50	<0.50	

SYMBOLS AND ABBREVIATIONS:

-- = Not analyzed/applicable/measured/available

< = Not detected at or above the laboratory reporting limit

1,2-DCA = 1,2-Dichloroethane

DIPE = Di-isopropyl ether

EDB = 1,2-Dibromoethane

ETBE = Ethyl tert-butyl ether

MTBE = Methyl tert-butyl ether

TAME = tert-Amyl methyl ether

TBA = tert-Butyl alcohol

µg/L = Micrograms per Liter

FOOTNOTES:

a = The continuing calibration verification for ethanol was outside of client contractual limits, however, it was within method acceptance limits. The data should still be useful for its intended purpose.

NOTES:

All volatile organic compounds analyzed using EPA Method 8260B.

Note: The data within this table collected prior to April 2006 was provided to Broadbent & Associates, Inc. by Atlantic Richfield Company and their previous consultants. Broadbent & Associates, Inc. has not verified the accuracy of this information.

Table 3. Historical Ground-Water Flow Direction and Gradient
Station #374, 6407 Telegraph Ave., Oakland, CA

Date Sampled	Approximate Flow Direction	Approximate Hydraulic Gradient
1/31/1996	Southwest	0.04
4/10/1996	Southwest	0.04
7/16/1996	Southwest	0.03
10/14/1996	Southwest	0.03
3/27/1997	Southwest	0.04
5/27/1997	Southwest	0.03
8/12/1997	Southwest	0.04
11/17/1997	Southwest	0.03
3/16/1998	Southwest	0.03
5/12/1998	Southwest	0.04
7/27/1998	Southwest	0.04
10/15/1998	Southwest	0.02
2/18/1999	Southwest	0.05
5/24/1999	Southwest	0.03
8/27/1999	Southwest	0.03
10/26/1999	Southwest	0.03
2/3/2000	Southwest	0.047
6/20/2000	Southwest	0.035
9/28/2000	Southwest	0.034
12/17/2000	Southwest	0.032
3/23/2001	Southwest	0.034
6/21/2001	Southwest	0.032
9/23/2001	Southwest	0.029
12/31/2001	Southwest	0.043
3/21/2002	Southwest	0.038
4/17/2002	Southwest	0.031
8/12/2002	Southwest	0.032
12/6/2002	Southwest	0.020
1/29/2003	Southwest	0.027
5/23/2003	Southwest	0.039
9/4/2003	Southwest	0.033
11/20/2003	Southwest	0.029
2/2/2004	Southwest	0.043 (a)
5/14/2004	Southwest	0.037 (a)
9/2/2004	Southwest	0.027 (a)
11/4/2004	Southwest	0.034 (a)
2/8/2005	Southwest	0.061 (a)
5/9/2005	Southwest	0.08 (a)
8/11/2005	Southwest	0.06 (a)
11/18/2005	Southwest	0.07 (a)
2/16/2006	Southwest	0.09 (a)
5/30/2006	Southwest	0.06 (a)

Table 3. Historical Ground-Water Flow Direction and Gradient
Station #374, 6407 Telegraph Ave., Oakland, CA

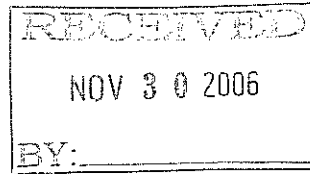
Date Sampled	Approximate Flow Direction	Approximate Hydraulic Gradient
8/24/2006	Southwest	0.03
11/1/2006	Southwest	0.02

a = Gradients potentially suspect due to error in MW-4 and MW-5 TOC measuring point elevations discovered third quarter 2006.

Note: The data within this table collected prior to April 2006 was provided to Broadbent & Associates, Inc. by Atlantic Richfield Company and their previous consultants. Broadbent & Associates, Inc. has not verified the accuracy of this information.

APPENDIX A

**STRATUS GROUND-WATER SAMPLING DATA PACKAGE
(INCLUDES FIELD DATA SHEETS AND LABORATORY ANALYTICAL REPORT
WITH CHAIN-OF-CUSTODY DOCUMENTATION)**



3330 Cameron Park Drive, Ste 550
Cameron Park, California 95682
(530) 676-6004 ~ Fax: (530) 676-6005

November 20, 2006

Mr. Rob Miller
Broadbent & Associates
2000 Kirman Ave.
Reno, NV 89502

Re: Groundwater Sampling Data Package, BP Service Station No. 374, located at 6407 Telegraph Avenue, Oakland, California (Quarterly Monitoring performed on November 1, 2006)

General Information

Data Submittal Prepared / Reviewed by: Sandy Hayes / Jay Johnson

Phone Number: (530) 676-6000

On-Site Supplier Representative: Jerry Gonzales

Date: November 1, 2006

Arrival: 15:05 *Departure:* 16:15

Weather Conditions: Clear

Unusual Field Conditions: None

Scope of Work Performed: Quarterly monitoring and sampling

Variations from Work Scope: None noted

This submittal presents the tabulation of data collected in association with routine groundwater monitoring. The attachments include field data sheets, chain of custody documentation, and analytical results. The information is being provided to BP-ARCO's Scoping Supplier for use in preparing a report for regulatory submittal. This submittal is limited to presentation of collected data and does not include data interpretation or conclusions or recommendations. Any questions concerning this submittal should be addressed to the Preparer/Reviewer identified above.

Sincerely,

STRATUS ENVIRONMENTAL, INC.

Jay R. Johnson, P.G.
Project Manager



Attachments:

- Field Data Sheets
- Chain of Custody Documentation
- Analytical Results

CC: Mr. Paul Supple, BP/ARCO

BP ALAMEDA PORTFOLIO

HYDROLOGIC DATA SHEET

Gauge Date: 11-1-06

Project Name: Oakland - 6407 Telegraph Ave.

Field Technician: Jerry

Project Number: 374

TOC = Top of Well Casing Elevation
 DTP = Depth to Free Product (FP or NAP) Below TOC
 DTW = Depth to Groundwater Below TOC
 DTB = Depth to Bottom of Well Casing Below TOC

DIA = Well Casing Diameter
 ELEV = Groundwater Elevation
 DUP = Duplicate

WELL OR LOCATION	TIME	MEASUREMENT						PURGE & SAMPLE	SHEEN CONFIRMATION (w/bailer)	COMMENTS
		TOC	DTP	DTW	DTB	DIA	ELEV			
MW-1	16:00			8.28	26.55					
MW-2	15:46			8.38	26.15					
MW-3	15:30			7.50	26.65					
MW-4	16:05			8.67	26.80					
MW-5	15:41			8.37	22.95					
MW-6	15:39			6.05	14.45					

BP ALAMEDA PORTFOLIO

WATER SAMPLE FIELD DATA SHEET

PROJECT #: 374 PURGED BY: [Signature] WELL I.D.: MW-1
 CLIENT NAME: _____ SAMPLED BY: [Signature] SAMPLE I.D.: MW-1
 LOCATION: Oakland - 6407 Telegraph Ave. QA SAMPLES: _____

DATE PURGED 11-1-06 START (2400hr) 16:05 END (2400hr) 1611
 DATE SAMPLED 11-1-06 SAMPLE TIME (2400hr) 17:05
 SAMPLE TYPE: Groundwater Surface Water _____ Treatment Effluent _____ Other _____

CASING DIAMETER: 2" _____ 3" _____ 4" 5" _____ 6" _____ 8" _____ Other _____
 Casing Volume: (gallons per foot) (0.17) (0.38) (0.67) (1.02) (1.50) (2.60) ()

DEPTH TO BOTTOM (feet) = 26.55 CASING VOLUME (gal) = 12.2
 DEPTH TO WATER (feet) = 8.28 CALCULATED PURGE (gal) = 36.7
 WATER COLUMN HEIGHT (feet) = 18.2 ACTUAL PURGE (gal) = 37.0

FIELD MEASUREMENTS

DATE	TIME (2400hr)	VOLUME (gal)	TEMP. (degrees F)	CONDUCTIVITY (umhos/cm)	pH (units)	COLOR (visual)	TURBIDITY (NTU)
<u>11-1-06</u>	<u>16:07</u>	<u>12.3</u>	<u>18.5</u>	<u>851</u>	<u>7.21</u>	<u>clear</u>	<u>—</u>
<u>1</u>	<u>16:09</u>	<u>25.0</u>	<u>19.1</u>	<u>875</u>	<u>7.19</u>	<u>1</u>	<u>—</u>
<u>1</u>	<u>16:11</u>	<u>37.0</u>	<u>19.0</u>	<u>883</u>	<u>7.09</u>	<u>1</u>	<u>—</u>

SAMPLE INFORMATION

SAMPLE DEPTH TO WATER: 11.63 SAMPLE TURBIDITY: clear

80% RECHARGE: YES NO ANALYSES: All Gem
 ODOR: NO SAMPLE VESSEL / PRESERVATIVE: Vac-HCL

PURGING EQUIPMENT

Bladder Pump Bailer (Teflon)
 Centrifugal Pump Bailer (PVC)
 Submersible Pump Bailer (Stainless Steel)
 Peristaltic Pump Dedicated _____
 Other: _____
 Pump Depth: 23.5

SAMPLING EQUIPMENT

Bladder Pump Bailer (Teflon)
 Centrifugal Pump Bailer (PVC or disposable)
 Submersible Pump Bailer (Stainless Steel)
 Peristaltic Pump Dedicated _____
 Other: _____

WELL INTEGRITY: Good LOCK#: MASTER

REMARKS: D.O. 1.65

SIGNATURE: [Signature] Page _____ of _____

4521



Chain of Custody Record

Project Name: Arco 374
 BP BU/AR Region/Enfos Segment: BP > Americas > West > Retail > CA > Alameda > 374

State or Lead Regulatory Agency: _____
 Requested Due Date (mm/dd/yy): _____

On-site Time: <u>15:05</u>	Temp: <u>68</u>
Off-site Time: <u>16:15</u>	Temp: <u>68</u>
Sky Conditions: <u>Clear</u>	
Meteorological Events: <u>None</u>	
Wind Speed: <u>0</u>	Direction: <u>NB</u>

Lab Name: <u>TestAmerica</u>	BP/AR Facility No.: <u>374</u>	Consultant/Contractor: <u>Stratus Environmental, Inc.</u>
Address: <u>885 Jarvis Drive</u>	BP/AR Facility Address: <u>6407 Telegraph Ave., Oakland</u>	Address: <u>3330 Cameron Park Drive, Suite 550</u>
<u>Morgan Hill, CA 95937</u>	Site Lat/Long:	<u>Cameron Park, CA 95682</u>
Lab PM: <u>Lisa Race</u>	California Global ID #: <u>T0600100106</u>	Consultant/Contractor Project No.:
Tele/Fax: <u>408-782-8156 408-782-6308 (fax)</u>	Enfos Project No.: <u>G0</u>	Consultant/Contractor PM: <u>Jay Johnson</u>
BP/AR PM Contact: <u>Paul Supple</u>	Provision or RCOP (circle one) <u>Provision</u>	Tele/Fax: <u>(530) 676-6000 / (530) 676-6005</u>
Address: <u>2010 Crow Canyon Place, Suite 150</u>	Phase/WBS: <u>04-Monitoring</u>	Report Type & QC Level: <u>Level 1 with EDF</u>
<u>San Ramon, CA</u>	Sub Phase/Task: <u>03-Analytical</u>	E-mail EDD To: <u>cjewitt@stratusinc.net</u>
Tele/Fax: <u>925-275-3506</u>	Cost Element: <u>01-Contractor labor</u>	Invoice to: <u>Atlantic Richfield Co.</u>

Item No.	Sample Description	Time	Date	Matrix			Laboratory No.	No. of Containers	Preservative					Requested Analysis					Sample Point Lat/Long and Comments: <u>Oxygenates include MtBE, TAME, DIPE, EtBE, TBA, ethanol, 1,2-DCA & EDB</u>					
				Soil/Solid	Water/Liquid	Air			Unpreserved	H ₂ SO ₄	HNO ₃	HCl	Methanol	BTEX 8021	BTEX/TPH	BTEX/Oxy*/TPHg	EPA 8270	1,2-DCA		EDB	Ethanol by 8260			
	MW-1	<u>12/05</u>	<u>12/06</u>	X				<u>6</u>																
	<u>TB-374 11-1-06</u>		<u>1</u>					<u>2</u>				X						X	X	X				
																		X	X	X				<u>Hold</u>

3.4

Sampler's Name: <u>Jerry Garcia</u>	Relinquished By / Affiliation: <u>[Signature]</u>	Date: <u>11/3/06</u>	Time: <u>12:30</u>	Accepted By / Affiliation: <u>[Signature]</u>	Date: <u>11/30/2006</u>	Time: <u>12:30</u>
Sampler's Company: <u>Danbur</u>						
Shipment Date:						
Shipment Method:						
Shipment Tracking No:						

Special Instructions: Please cc results to bpvalley@secor.com

Custody Seals In Place Yes No Temp Blank Yes No Cooler Temperature on Receipt °F/C Trip Blank Yes No

Distribution: White Copy - Laboratory / Yellow Copy - BP/Atlantic Richfield Co. / Pink Copy - Consultant/Contractor

20 November, 2006

Jay Johnson
Stratus Environmental Inc. [Arco]
3330 Cameron Park Dr., Suite 550
Cameron Park, CA 95682

RE: ARCO #0374, Oakland, CA
Work Order: MPK0169

Enclosed are the results of analyses for samples received by the laboratory on 11/04/06 15:30. If you have any questions concerning this report, please feel free to contact me.

Sincerely,



Lisa Race
Senior Project Manager

CA ELAP Certificate # 1210

The results in this laboratory report pertain only to the samples tested in the laboratory. The analyses contained in this report were performed in accordance with the BPGCLN Technical Specifications, applicable Federal, State, local regulations and certification requirements as well as the methodologies as described in laboratory SOPs reviewed by the BPGCLN. This entire report was reviewed and approved for release.

Stratus Environmental Inc. [Arco] 3330 Cameron Park Dr., Suite 550 Cameron Park CA, 95682	Project: ARCO #0374, Oakland, CA Project Number: G0C21- Project Manager: Jay Johnson	MPK0169 Reported: 11/20/06 11:41
---	--	--

ANALYTICAL REPORT FOR SAMPLES

Sample ID	Laboratory ID	Matrix	Date Sampled	Date Received
MW-1	MPK0169-01	Water	11/01/06 17:05	11/04/06 15:30
TB-374 11-1-06	MPK0169-02	Water	11/01/06 00:00	11/04/06 15:30

The carbon range for the TPH-GRO has been changed from C6-C10 to C4-C12. The carbon range for TPH-DRO has been changed from C10-C28 to C10-C36. EPA 8015B has been modified to better meet the requirements of California regulatory agencies. These samples were received with no custody seals.

Stratus Environmental Inc. [Arco]
3330 Cameron Park Dr., Suite 550
Cameron Park CA, 95682

Project: ARCO #0374, Oakland, CA
Project Number: G0C21-
Project Manager: Jay Johnson

MPK0169
Reported:
11/20/06 11:41

Total Purgeable Hydrocarbons by GC/MS (CA LUFT)
TestAmerica - Morgan Hill, CA

Analyte	Result	Reporting Limit	Units	Dilution	Batch	Prepared	Analyzed	Method	Notes
MW-1 (MPK0169-01) Water Sampled: 11/01/06 17:05 Received: 11/04/06 15:30									
Gasoline Range Organics (C4-C12)	120	50	ug/l	1	6K11005	11/11/06	11/11/06	LUFT GCMS	PV
<i>Surrogate: 1,2-Dichloroethane-d4</i>		<i>128 %</i>	<i>60-145</i>		<i>"</i>	<i>"</i>	<i>"</i>	<i>"</i>	

Stratus Environmental Inc. [Arco]
3330 Cameron Park Dr., Suite 550
Cameron Park CA, 95682

Project: ARCO #0374, Oakland, CA
Project Number: G0C21-
Project Manager: Jay Johnson

MPK0169
Reported:
11/20/06 11:41

Volatile Organic Compounds by EPA Method 8260B
TestAmerica - Morgan Hill, CA

Analyte	Result	Reporting Limit	Units	Dilution	Batch	Prepared	Analyzed	Method	Notes
MW-1 (MPK0169-01) Water Sampled: 11/01/06 17:05 Received: 11/04/06 15:30									
tert-Amyl methyl ether	ND	5.0	ug/l	10	6K09026	11/09/06	11/10/06	EPA 8260B	
Benzene	ND	5.0	"	"	"	"	"	"	
tert-Butyl alcohol	ND	200	"	"	"	"	"	"	
Di-isopropyl ether	ND	5.0	"	"	"	"	"	"	
1,2-Dibromoethane (EDB)	ND	5.0	"	"	"	"	"	"	
1,2-Dichloroethane	ND	5.0	"	"	"	"	"	"	
Ethanol	ND	3000	"	"	"	"	"	"	IC
Ethyl tert-butyl ether	ND	5.0	"	"	"	"	"	"	
Ethylbenzene	ND	5.0	"	"	"	"	"	"	
Methyl tert-butyl ether	220	5.0	"	"	"	"	"	"	
Toluene	ND	5.0	"	"	"	"	"	"	
Xylenes (total)	ND	5.0	"	"	"	"	"	"	
<i>Surrogate: Dibromofluoromethane</i>		99 %		75-130	"	"	"	"	
<i>Surrogate: 1,2-Dichloroethane-d4</i>		112 %		60-145	"	"	"	"	
<i>Surrogate: Toluene-d8</i>		96 %		70-130	"	"	"	"	
<i>Surrogate: 4-Bromofluorobenzene</i>		96 %		60-120	"	"	"	"	

Stratus Environmental Inc. [Arco]
3330 Cameron Park Dr., Suite 550
Cameron Park CA, 95682

Project: ARCO #0374, Oakland, CA
Project Number: G0C21-
Project Manager: Jay Johnson

MPK0169
Reported:
11/20/06 11:41

Total Purgeable Hydrocarbons by GC/MS (CA LUFT) - Quality Control TestAmerica - Morgan Hill, CA

Analyte	Result	Reporting Limit	Units	Spike Level	Source Result	%REC	%REC Limits	RPD	RPD Limit	Notes
---------	--------	-----------------	-------	-------------	---------------	------	-------------	-----	-----------	-------

Batch 6K11005 - EPA 5030B P/T / LUFT GCMS

Blank (6K11005-BLK1)

Prepared & Analyzed: 11/11/06

Gasoline Range Organics (C4-C12)	ND	50	ug/l							
Surrogate: 1,2-Dichloroethane-d4	2.62		"	2.50		105	60-145			

Laboratory Control Sample (6K11005-BS2)

Prepared & Analyzed: 11/11/06

Gasoline Range Organics (C4-C12)	347	50	ug/l	440		79	75-140			
Surrogate: 1,2-Dichloroethane-d4	2.66		"	2.50		106	60-145			

Laboratory Control Sample Dup (6K11005-BSD2)

Prepared & Analyzed: 11/11/06

Gasoline Range Organics (C4-C12)	348	50	ug/l	440		79	75-140	0.3	20	
Surrogate: 1,2-Dichloroethane-d4	2.67		"	2.50		107	60-145			

Stratus Environmental Inc. [Arco]
3330 Cameron Park Dr., Suite 550
Cameron Park CA, 95682

Project: ARCO #0374, Oakland, CA
Project Number: G0C21-
Project Manager: Jay Johnson

MPK0169
Reported:
11/20/06 11:41

Volatile Organic Compounds by EPA Method 8260B - Quality Control
TestAmerica - Morgan Hill, CA

Analyte	Result	Reporting Limit	Units	Spike Level	Source Result	%REC	%REC Limits	RPD	RPD Limit	Notes
---------	--------	-----------------	-------	-------------	---------------	------	-------------	-----	-----------	-------

Batch 6K09026 - EPA 5030B P/T / EPA 8260B

Blank (6K09026-BLK1)

Prepared & Analyzed: 11/09/06

tert-Amyl methyl ether	ND	0.50	ug/l							
Benzene	ND	0.50	"							
tert-Butyl alcohol	ND	20	"							
Di-isopropyl ether	ND	0.50	"							
1,2-Dibromoethane (EDB)	ND	0.50	"							
1,2-Dichloroethane	ND	0.50	"							
Ethanol	ND	300	"							
Ethyl tert-butyl ether	ND	0.50	"							
Ethylbenzene	ND	0.50	"							
Methyl tert-butyl ether	ND	0.50	"							
Toluene	ND	0.50	"							
Xylenes (total)	ND	0.50	"							
<i>Surrogate: Dibromofluoromethane</i>	2.46		"	2.50		98	75-130			
<i>Surrogate: 1,2-Dichloroethane-d4</i>	2.59		"	2.50		104	60-145			
<i>Surrogate: Toluene-d8</i>	2.41		"	2.50		96	70-130			
<i>Surrogate: 4-Bromofluorobenzene</i>	2.36		"	2.50		94	60-120			

Laboratory Control Sample (6K09026-BS1)

Prepared & Analyzed: 11/09/06

tert-Amyl methyl ether	11.7	0.50	ug/l	10.0		117	65-135			
Benzene	11.3	0.50	"	10.0		113	70-125			
tert-Butyl alcohol	217	20	"	200		108	60-135			
Di-isopropyl ether	11.4	0.50	"	10.0		114	70-130			
1,2-Dibromoethane (EDB)	11.5	0.50	"	10.0		115	80-125			
1,2-Dichloroethane	11.2	0.50	"	10.0		112	75-125			
Ethanol	267	300	"	200		134	15-150			
Ethyl tert-butyl ether	11.4	0.50	"	10.0		114	65-130			
Ethylbenzene	10.9	0.50	"	10.0		109	70-130			
Methyl tert-butyl ether	11.4	0.50	"	10.0		114	50-140			
Toluene	11.1	0.50	"	10.0		111	70-120			
Xylenes (total)	32.9	0.50	"	30.0		110	80-125			
<i>Surrogate: Dibromofluoromethane</i>	2.47		"	2.50		99	75-130			
<i>Surrogate: 1,2-Dichloroethane-d4</i>	2.46		"	2.50		98	60-145			
<i>Surrogate: Toluene-d8</i>	2.42		"	2.50		97	70-130			
<i>Surrogate: 4-Bromofluorobenzene</i>	2.35		"	2.50		94	60-120			

TestAmerica - Morgan Hill, CA

The results in this report apply to the samples analyzed in accordance with the chain of custody document. Unless otherwise stated, results are reported on a wet weight basis. This analytical report must be reproduced in its entirety.

Stratus Environmental Inc. [Arco]
3330 Cameron Park Dr., Suite 550
Cameron Park CA, 95682

Project: ARCO #0374, Oakland, CA
Project Number: G0C21-
Project Manager: Jay Johnson

MPK0169
Reported:
11/20/06 11:41

Volatile Organic Compounds by EPA Method 8260B - Quality Control
TestAmerica - Morgan Hill, CA

Analyte	Result	Reporting Limit	Units	Spike Level	Source Result	%REC	%REC Limits	RPD	RPD Limit	Notes
---------	--------	-----------------	-------	-------------	---------------	------	-------------	-----	-----------	-------

Batch 6K09026 - EPA 5030B P/T / EPA 8260B

Matrix Spike (6K09026-MS1)		Source: MPK0121-02			Prepared & Analyzed: 11/09/06					
tert-Amyl methyl ether	22.5	1.0	ug/l	20.0	ND	112	65-135			
Benzene	21.7	1.0	"	20.0	ND	108	70-125			
tert-Butyl alcohol	415	40	"	400	ND	104	60-135			
Di-isopropyl ether	22.0	1.0	"	20.0	ND	110	70-130			
1,2-Dibromoethane (EDB)	22.1	1.0	"	20.0	ND	110	80-125			
1,2-Dichloroethane	21.5	1.0	"	20.0	ND	108	75-125			
Ethanol	549	600	"	400	ND	137	15-150			
Ethyl tert-butyl ether	22.0	1.0	"	20.0	ND	110	65-130			
Ethylbenzene	20.5	1.0	"	20.0	ND	102	70-130			
Methyl tert-butyl ether	75.0	1.0	"	20.0	22	265	50-140			LM
Toluene	21.2	1.0	"	20.0	ND	106	70-120			
Xylenes (total)	62.7	1.0	"	60.0	ND	104	80-125			
<i>Surrogate: Dibromofluoromethane</i>	2.57		"	2.50		103	75-130			
<i>Surrogate: 1,2-Dichloroethane-d4</i>	2.49		"	2.50		100	60-145			
<i>Surrogate: Toluene-d8</i>	2.47		"	2.50		99	70-130			
<i>Surrogate: 4-Bromofluorobenzene</i>	2.39		"	2.50		96	60-120			

Matrix Spike Dup (6K09026-MSD1)		Source: MPK0121-02			Prepared & Analyzed: 11/09/06					
tert-Amyl methyl ether	20.3	1.0	ug/l	20.0	ND	102	65-135	10	25	
Benzene	21.0	1.0	"	20.0	ND	105	70-125	3	15	
tert-Butyl alcohol	400	40	"	400	ND	100	60-135	4	35	
Di-isopropyl ether	20.6	1.0	"	20.0	ND	103	70-130	7	35	
1,2-Dibromoethane (EDB)	19.6	1.0	"	20.0	ND	98	80-125	12	15	
1,2-Dichloroethane	19.8	1.0	"	20.0	ND	99	75-125	8	10	
Ethanol	497	600	"	400	ND	124	15-150	10	35	
Ethyl tert-butyl ether	20.5	1.0	"	20.0	ND	102	65-130	7	35	
Ethylbenzene	19.9	1.0	"	20.0	ND	100	70-130	3	15	
Methyl tert-butyl ether	81.2	1.0	"	20.0	22	296	50-140	8	25	LM
Toluene	20.3	1.0	"	20.0	ND	102	70-120	4	15	
Xylenes (total)	60.4	1.0	"	60.0	ND	101	80-125	4	15	
<i>Surrogate: Dibromofluoromethane</i>	2.56		"	2.50		102	75-130			
<i>Surrogate: 1,2-Dichloroethane-d4</i>	2.44		"	2.50		98	60-145			
<i>Surrogate: Toluene-d8</i>	2.48		"	2.50		99	70-130			
<i>Surrogate: 4-Bromofluorobenzene</i>	2.31		"	2.50		92	60-120			

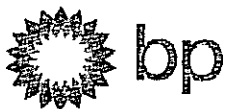
Stratus Environmental Inc. [Arco]
3330 Cameron Park Dr., Suite 550
Cameron Park CA, 95682

Project: ARCO #0374, Oakland, CA
Project Number: G0C21-
Project Manager: Jay Johnson

MPK0169
Reported:
11/20/06 11:41

Notes and Definitions

PV Hydrocarbon result partly due to individ. peak(s) in quant. range
LM MS and/or MSD above acceptance limits. See Blank Spike(LCS).
IC Calib. verif. is within method limits but outside contract limits
DET Analyte DETECTED
ND Analyte NOT DETECTED at or above the reporting limit or MDL, if MDL is specified
NR Not Reported
dry Sample results reported on a dry weight basis
RPD Relative Percent Difference



Chain of Custody Record

Project Name: Arco 374
 BP BU/AR Region/Enfos Segment: BP > Americas > West > Retail > CA > Alameda > 374

State or Lead Regulatory Agency: _____
 Requested Due Date (mm/dd/yy): _____

On-site Time: <u>8:09</u>	Temp: <u>68</u>
Off-site Time: <u>16:15</u>	Temp: <u>68</u>
Sky Conditions: <u>Clear</u>	
Meteorological Events: <u>None</u>	
Wind Speed: <u>0</u>	Direction: <u>NE</u>

Lab Name: TestAmerica	BP/AR Facility No.: 374	Consultant/Contractor: Stratus Environmental, Inc.
Address: 885 Jarvis Drive Morgan Hill, CA 95937	BP/AR Facility Address: 6407 Telegraph Ave., Oakland	Address: 3330 Cameron Park Drive, Suite 550 Cameron Park, CA 95682
Lab PM: Lisa Race	Site Lat/Long:	Consultant/Contractor Project No.:
Tele/Fax: 408-782-8156 408-782-6308 (fax)	California Global ID #: T0600100106	Consultant/Contractor PM: Jay Johnson
BP/AR PM Contact: Paul Supple	Enfos Project No.: G0	Tele/Fax: (530) 676-6000 / (530) 676-6005
Address: 2010 Crow Canyon Place, Suite 150 San Ramon, CA	Provision or RCOP (circle one) Provision	Report Type & QC Level: Level 1 with EDF
Tele/Fax: 925-275-3506	Phase/WBS: 04-Monitoring	E-mail BDD To: <u>glewitt@stratusinc.net</u>
	Sub Phase/Task: 03-Analytical	Invoice to: Atlantic Richfield Co.
	Cost Element: 01-Contractor labor	

Item No.	Sample Description	Time	Date	Matrix			Laboratory No.	No. of Containers	Preservative					Requested Analysis							Sample Point Lat/Long and Comments: Oxygenates include MiBE, TAME, DIPE, EIBE, TBA, ethanol, 1,2-DCA & EDB				
				Soil/Solid	Water/Liquid	Air			Unpreserved	H ₂ SO ₄	HNO ₃	HCl	Methanol	BTEX 8021	BTEX/TPH	BTEX/Oxy*/TPHg	TPH/8260	ERA 8270	1,2-DCA	EDB		Ethanol by 8260			
MW-1		<u>8:05</u>	<u>11-1-06</u>	X			<u>MPK0169</u>	<u>6</u>																	
	<u>TB-374 11-1-06</u>		<u>1</u>				<u>01</u>	<u>2</u>				X				X	X	X							
							<u>02</u>				X				X		X	X							<u>Hold</u>

3.4

Sampler's Name: <u>Jerry Gurbale</u>	Relinquished By / Affiliation		Date	Time	Accepted By / Affiliation		Date	Time
Sampler's Company: <u>Dinor</u>			<u>11/3/06</u>	<u>12:30</u>			<u>11/3/06</u>	<u>12:30</u>
Shipment Date:			<u>11/3</u>	<u>1530</u>			<u>11/3</u>	<u>1530</u>
Shipment Method:								
Shipment Tracking No:								

Special Instructions: Please cc results to bpvalley@secor.com

Body Seals In Place Yes No Temp Blank Yes No Cooler Temperature on Receipt 35°F (E) Trip Blank Yes No
 Distribution: White Copy - Laboratory / Yellow Copy - BP/Atlantic Richfield Co. / Pink Copy - Consultant/Contractor

TEST AMERICA SAMPLE RECEIPT LOG

CLIENT NAME: Bp / Arco
 REC. BY (PRINT) EL
 WORKORDER: MPK0147

DATE REC'D AT LAB: 11/4/06
 TIME REC'D AT LAB: 1530
 DATE LOGGED IN: 11/6/06

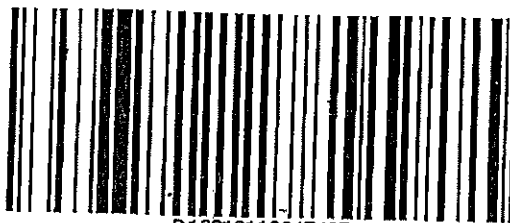
For Regulatory Purposes?
 DRINKING WATER YES / NO
 WASTE WATER YES / NO

CIRCLE THE APPROPRIATE RESPONSE	LAB SAMPLE #	CLIENT ID	CONTAINER DESCRIPTION	PRESERVATIVE	pH	SAMPLE MATRIX	DATE SAMPLED	REMARKS: CONDITION (ETC.)
1. Custody Seal(s) Present / <input checked="" type="radio"/> Absent Intact / Broken*								SEE COC
2. Chain-of-Custody <input checked="" type="radio"/> Present / Absent*								
3. Traffic Reports or Packing List: <input checked="" type="radio"/> Present / Absent								
4. Airbill: <input checked="" type="radio"/> Airbill / Sticker <input checked="" type="radio"/> Present / Absent								
5. Airbill #: <u>SEE ATT.</u>								
6. Sample Labels: <input checked="" type="radio"/> Present / Absent								
7. Sample IDs: <input checked="" type="radio"/> Listed / Not Listed on Chain-of-Custody								
8. Sample Condition: <input checked="" type="radio"/> Intact / Broken* / Leaking*								
9. Does information on chain-of-custody, traffic reports and sample labels agree? <input checked="" type="radio"/> Yes / No*								
10. Sample received within hold time? <input checked="" type="radio"/> Yes / No*								
11. Adequate sample volume received? <input checked="" type="radio"/> Yes / No*								
12. Proper preservatives used? <input checked="" type="radio"/> Yes / No*								
13. Trip Blank / Temp Blank Received? (circle which, if yes) <input checked="" type="radio"/> Yes / No*								
14. Read Temp: <u>2.5°C</u> Corrected Temp: <u>1.5°C</u> Is corrected temp 4 +/-2°C? <input checked="" type="radio"/> Yes / No**								

(Acceptance range for samples requiring thermal pres.)
 **Exception (if any): METALS / DFF ON ICE
 or Problem COC

*IF CIRCLED, CONTACT PROJECT MANAGER AND ATTACH RECORD OF RESOLUTION.

California Overnight Shipping Label



D10010110045427

Date Printed 11/3/2006

Tracking#D10010110045427

Shipped From:

TEST AMERICA - SACRAMENTO
819 STRIKER AVENUE 8
SACRAMENTO, CA 95834

Sent By: TIM ALBRIGHT

Phone#: (916)921-9600

wgt(lbs): 38

Reference:

Decl. Value: \$0.00

Ship To Company:

TESTAMERICA - MORGAN HILL
885 JARVIS DR
MORGAN HILL, CA 95037
SAMPLE CONTROL (408)776-9600

Service: **S**

Sort Code: **SJC**

Special Services:

Saturday Delivery

APPENDIX B

GEOTRACKER UPLOAD CONFIRMATION

Electronic Submittal Information

[Main Menu](#) | [View/Add Facilities](#) | [Upload EDD](#) | [Check EDD](#)

UPLOADING A GEO_WELL FILE

Processing is complete. No errors were found!
Your file has been successfully submitted!

<u>Submittal Title:</u>	4Q06 GEO_WELL
<u>Submittal Date/Time:</u>	1/24/2007 3:09:13 PM
<u>Confirmation Number:</u>	2303907632

[Back to Main Menu](#)

Logged in as BROADBENT-C
(CONTRACTOR)

CONTACT SITE [ADMINISTRATOR](#).

Electronic Submittal Information

[Main Menu](#) | [View/Add Facilities](#) | [Upload EDD](#) | [Check EDD](#)

Your EDF file has been successfully uploaded!

Confirmation Number: 4344932436
Date/Time of Submittal: 1/26/2007 4:08:54 PM
Facility Global ID: T0600100106
Facility Name: ARCO #0374
Submittal Title: 4Q06 GW Monitoring
Submittal Type: GW Monitoring Report

Click [here](#) to view the detections report for this upload.

ARCO #0374 6407 TELEGRAPH OAKLAND, CA 94609	Regional Board - Case #: 01-0114 SAN FRANCISCO BAY RWQCB (REGION 2) Local Agency (lead agency) - Case #: RO0000078 ALAMEDA COUNTY LOP - (SP)
--	---

<u>CONF #</u>	<u>TITLE</u>	<u>QUARTER</u>
4344932436	4Q06 GW Monitoring	Q4 2006
<u>SUBMITTED BY</u>	<u>SUBMIT DATE</u>	<u>STATUS</u>
Broadbent & Associates, Inc.	1/26/2007	PENDING REVIEW

SAMPLE DETECTIONS REPORT

# FIELD POINTS SAMPLED	1
# FIELD POINTS WITH DETECTIONS	1
# FIELD POINTS WITH WATER SAMPLE DETECTIONS ABOVE MCL	1
SAMPLE MATRIX TYPES	WATER

METHOD QA/QC REPORT

METHODS USED	8260FA,8260TPH
TESTED FOR REQUIRED ANALYTES?	Y
LAB NOTE DATA QUALIFIERS	Y

QA/QC FOR 8021/8260 SERIES SAMPLES

TECHNICAL HOLDING TIME VIOLATIONS	0
METHOD HOLDING TIME VIOLATIONS	0
LAB BLANK DETECTIONS ABOVE REPORTING DETECTION LIMIT	0
LAB BLANK DETECTIONS	0
DO ALL BATCHES WITH THE 8021/8260 SERIES INCLUDE THE FOLLOWING?	
- LAB METHOD BLANK	Y
- MATRIX SPIKE	N
- MATRIX SPIKE DUPLICATE	N
- BLANK SPIKE	Y
- SURROGATE SPIKE	Y

WATER SAMPLES FOR 8021/8260 SERIES

MATRIX SPIKE / MATRIX SPIKE DUPLICATE(S) % RECOVERY BETWEEN 65-135%	N
MATRIX SPIKE / MATRIX SPIKE DUPLICATE(S) RPD LESS THAN 30%	Y
SURROGATE SPIKES % RECOVERY BETWEEN 85-115%	N
BLANK SPIKE / BLANK SPIKE DUPLICATES % RECOVERY BETWEEN 70-130%	Y

SOIL SAMPLES FOR 8021/8260 SERIES

MATRIX SPIKE / MATRIX SPIKE DUPLICATE(S) % RECOVERY BETWEEN 65-135% n/a
MATRIX SPIKE / MATRIX SPIKE DUPLICATE(S) RPD LESS THAN 30% n/a
SURROGATE SPIKES % RECOVERY BETWEEN 70-125% n/a
BLANK SPIKE / BLANK SPIKE DUPLICATES % RECOVERY BETWEEN 70-130% n/a

FIELD QC SAMPLES

<u>SAMPLE</u>	<u>COLLECTED</u>	<u>DETECTIONS > REPD</u>
QCTB SAMPLES	N	0
QCEB SAMPLES	N	0
QCAB SAMPLES	N	0

Logged in as BROADBENT-C (CONTRACTOR)

CONTACT SITE ADMINISTRATOR.