



September 12, 1994

241.0102.010

Ms. Susan Hugo  
Alameda County Department of Environmental Health  
1131 Harbor Bay Parkway  
Alameda, CA 94501

ALCOO  
HAZMAT  
91 SEP 14 PM 2:45

**TRANSMITTAL  
FREE PRODUCT CHARACTERIZATION AND WELL LOG INFORMATION  
POWELL STREET PLAZA AND SHELLMOUND III  
EMERYVILLE, CALIFORNIA**

Dear Susan,

As you requested during the September 2, 1994 meeting at your office, we are providing a summary table and laboratory reports for analytical results from the free-product characterization sampling performed on November 10, 1993 (Appendix A). Free product samples collected from monitoring wells MW-7 and MW-13 at Powell Street Plaza were submitted to Coast-to-Coast Analytical Services (CCAS) as sample numbers 93450020 and 93450017, respectively. Also enclosed as you requested are the boring logs and well completion details for monitoring wells on the Powell Street Plaza and Shellmound III properties (Appendix B). A site plan is illustrated on Plate 1. If you have any questions please call John Skalbeck at (415) 899-1600.

Yours very truly,

**PES ENVIRONMENTAL, INC.**

Bryan J. Smith  
Staff Engineer

- Enclosures: Plate 1 Site Plan
- Appendix A Table A-1. Summary of Free-Product Characterization Results  
CCAS Analytical Sheets and Chromatograms
- Appendix B Table B-1 Summary of Well Completion Details  
Boring Logs

cc Tom Gram, Former Eastshore Partners (w/o Enclosures)

24101021011

**Table A-1**  
**Summary of Free-Product Characterization Results**  
**Powell Street Plaza**  
**Emeryville, California**

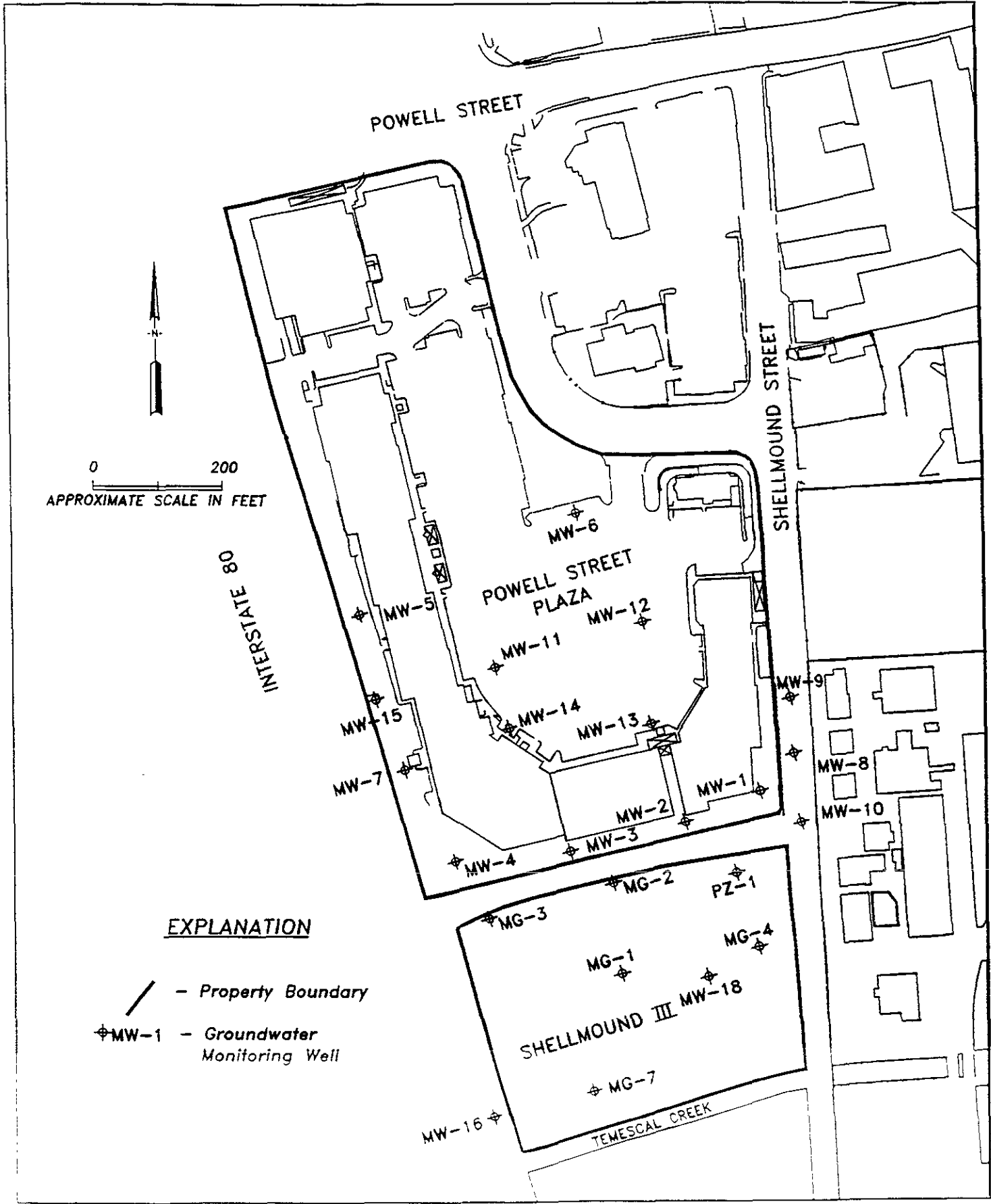
Sample Number 93450017 (MW-13)	
CONSTITUENT	CONCENTRATION (mg/kg)
MIBK	1100
TPH as Diesel	630,000
TPH as Diesel #2	990,000
Oil and Grease, Non-Polar	710,000
Antimony	0.6
Arsenic	1.8
Chromium	0.8
Copper	61
Lead	39
Nickel	7.0
Vanadium	5.0
Zinc	3.0

Sample Number 93450020 (MW-7)	
CONSTITUENT	CONCENTRATION (mg/kg)
TPH as Diesel	760000.00
Oil and Grease, Non-Polar	770000.00
Arsenic	1.30
Chromium	0.60
Copper	5.70
Lead	15.00
Nickel	4.0
Silver	0.50
Vanadium	5.0
Zinc	1.0



**Notes:**

MIBK: Methyl Isobutyl Ketone  
 TPH: Total Petroleum Hydrocarbons  
 mg/kg: Milligrams per kilogram

**PLATE 1**



EXPLANATION

-  - Property Boundary
-  MW-1 - Groundwater Monitoring Well

**APPENDIX A**

INDEX OF LOGS

Well Name	Investigator
MW-1	Alton Geoscience
MW-2	Alton Geoscience
MW-3	Alton Geoscience
MW-4	Alton Geoscience
MW-5	Alton Geoscience
MW-6	Alton Geoscience
MW-7	Alton Geoscience
MW-8	Alton Geoscience
MW-9	Alton Geoscience
MW-10	Alton Geoscience
MW-11	Not Available
MW-12	Alton Geoscience
MW-13	Alton Geoscience
MW-14	Alton Geoscience
MW-15	Not Available
MW-16	Not Available
MW-17	Alton Geoscience
MW-18	Alton Geoscience
MG-1	Trans Tech Consultants
MG-2	Trans Tech Consultants
MG-3	Trans Tech Consultants
MG-4	Trans Tech Consultants
MG-5	PES Environmental
PZ-1	PES Environmental

**Table B-1**  
**Summary of Well Completion Details**  
**Powell Street Plaza**  
**Emeryville, California**

Well	Casing Diameter (inches)	Screen Slot (inches)	Screened Interval (feet bgs)	Sand Pack Interval (feet bgs)	Sand Pack Material	Well Depth (feet bgs)	Boring Depth (feet bgs)
MW-1	4	0.02	2.5 - 14.5	2.5 - 14.5	Monterey #2	14.0	15.0
MW-2	4	0.02	3.0 - 14.0	3.0 - 14.0	Monterey #2	14.0	14.5
MW-3	4	0.02	3.5 - 13.0	3.5 - 13.0	Monterey #2	13.0	13.0
MW-4	4	0.02	4.5 - 13.5	4.5 - 13.5	Monterey #2	13.5	14.5
MW-5	2	0.02	5.0 - 15.0	5.0 - 15.0	Monterey #2	15.0	16.5
MW-6	2	0.02	3.0 - 15.0	3.0 - 15.0	Monterey #2	15.0	16.0
MW-7	4	0.02	2.0 - 12.0	2.0 - 12.0	Monterey #2	12.0	16.5
MW-8	2	0.02	2.0 - 12.0	2.0 - 12.0	Monterey #2	12.0	13.5
MW-9	2	0.02	2.0 - 12.0	2.0 - 12.0	Monterey #2	12.0	13.0
MW-10	2	0.02	2.0 - 11.0	2.0 - 11.0	Monterey #2	11.0	12.5
MW-11	2	0.02	2.0 - 12.9	2.0 - 12.9	Monterey #2	12.9	15.0
MW-12	2	0.02	2.0 - 11.0	2.0 - 11.0	Monterey #2	11.0	12.0
MW-13	2	0.02	2.0 - 11.0	2.0 - 11.0	Monterey #2	11.0	11.5
MW-14	2	0.02	2.0 - 11.0	2.0 - 11.0	Monterey #2	11.0	12.5
MW-15	4	0.02	2.0 - 12.0	2.0 - 12.0	Monterey #2	12.0	14.0
MW-16	2	0.02	2.0 - 13.0	2.0 - 13.0	Monterey #2	13.0	15.0
MW-17	2	0.02	2.0 - 12.0	2.0 - 12.0	Monterey #2	12.0	14.0
MW-18	2	0.02	2.0 - 12.0	2.0 - 12.0	Monterey #2	12.0	14.0
MG-1	2	0.02	6.0 - 16.5	5.0 - 17.5	2 x 16	16.5	17.5
MG-2	2	0.02	5.0 - 15.0	4.0 - 16.5	2 x 16	15.0	16.5
MG-3	2	0.02	4.0 - 14.5	3.0 - 15.0	2 x 16	14.5	15.0
MG-4	2	0.02	2.0 - 12.0	1.5 - 13.0	2 x 16	12.0	13.0
MG-7	2	0.02	4.0 - 17.0	3.0 - 18.5	Monterey #3	17.0	18.5
PZ-1	2	0.02	3.0 - 15.0	2.0 - 15.0	Monterey #3	15.0	15.0

**Note:**

bgs: Below ground surface

# ALTON GEOSCIENCE BORING LOG

PROJECT: 25-157

BORING DATE: 3/7/88

LOCATION: EMERYVILLE, CA

GEOLOGIST: T. FOX / S. DEFIBAUGH

TYPE: 8" AND 10" HSA

BORING NO.: B-5 'MW-1

DEPTH	I	BLOW CTS	MATERIAL ENCOUNTERED	USCS
0			Hand excavated first four feet.	
0			Soft, damp, dusky yellowish brown, silty CLAY, trace of sand, trace of gravel, occasional oil staining	CL
0			Medium stiff, moist, dusky yellowish brown, silty, sandy CLAY.	CL
5'		5-3-1	Loose, saturated, dusky yellowish brown, clayey SAND, some gravel.	SC
	++	50-4"	Loose, saturated, black, clayey, silty, SAND, some gravel.	SM
			Loose, saturated, black, clayey, silty, SAND, some gravel.	SM
		2-2-2	Soft, saturated, dark gray, sandy, silty CLAY.	CL
		4-4-4	Soft to medium stiff, saturated, olive gray, sandy, silty CLAY, trace of gravel.	CL
10'		3-4-4	Soft to medium stiff, saturated, olive gray, sandy, silty CLAY, trace of gravel.	CL
		2-1-2	Soft, saturated, light brown and light olive gray, sandy silty CLAY, trace of gravel.	CL
		3-4-5	NO SAMPLE RECOVERED	
15'				

HC = Hydrocarbon  
 VMR = Vapor Meter Reading  
 I = Sampling Interval  
 Total Depth = 15 feet.

++ = Sample Analyzed for HC concentration  
 ppm = Parts per Million  
 LEL = Lower Explosion Limit



# ALTON GEOSCIENCE BORING LOG

PROJECT: 25-157

BORING DATE: 3/7/88

LOCATION: EMERYVILLE, CA

GEOLOGIST: T. FOX / S. DEEBAUGH

TYPE: 8" AND 10" HSA

BORING NO.: B-6 MW-2

DEPTH	I	BLOW CTS	MATERIAL ENCOUNTERED	USCS
0			Hand excavated first four feet.	
0-4			Loose, damp, dusky yellowish brown silty SAND, trace of gravel; no HC odor.	SM
4-5		6-7-7	Loose, damp, dusky yellowish brown silty SAND, trace of gravel; no HC odor.	SM
5-6		4-5-2	Medium stiff, moist, olive gray silty SAND, trace of gravel.	SM
6-7			GROUND WATER AT 7.5'	
7-10		3-4-3	Loose, saturated, black, clayey silty SAND.	SM SM
10-12		2-2-2	Soft, saturated, dark gray, clayey SAND to CLAY.	SC/CH
12-14.5		2-2-2	Soft, wet, olive gray, CLAY.	CH
15				

HC = Hydrocarbon  
 VMR = Vapor Meter Reading  
 I = Sampling Interval  
 Total Depth = 14.5 feet.

++ = Sample Analyzed for HC concentration  
 ppm = Parts per Million  
 LEL = Lower Explosion Limit

# ALTON GEOSCIENCE BORING LOG

PROJECT: 25-157

BORING DATE: 3/7/88

LOCATION: EMERYVILLE, CA

GEOLOGIST: T. FOX / S. DEEBAUGH

TYPE: 8" AND 10" HSA

BORING NO.: B-7 MW-3

DEPTH	I	BLOW CTS	MATERIAL ENCOUNTERED	USCS
0			Hand excavated first four feet.	
0-5			Loose, damp, dusky yellowish brown silty SAND, trace of gravel; no HC odor.	SM
5		9-17-33	Loose, damp, dusky yellowish brown silty SAND, trace of gravel.	SM
5-6			Stained soil.	
6-7		3-4-3	Loose, wet, dark olive, gravelly clayey SAND.	SW/SC
7-8.5			GROUND WATER AT 8.5'	
8.5-10		4-5-10	Loose, saturated, dark olive gray, gravelly clayey SAND.	SW/SC
10-11				
11-12		9-8-9	Soft, saturated, dark gray, sandy, silty CLAY, trace of gravel.	CLCH
12-13				
13				

HC = Hydrocarbon  
 VMR = Vapor Meter Reading  
 I = Sampling Interval  
 Total Depth = 13.0 feet.

++ = Sample Analyzed for HC concentration  
 ppm = Parts per Million  
 LEL = Lower Explosion Limit

# ALTON GEOSCIENCE BORING LOG

PROJECT 25-157

BORING DATE 3-7-88

LOCATION: EMERYVILLE CA

GEOLOGIST: T. FOX / S. DEFIBAUGH

TYPE 8" HSA

BORING NO.: B-8 MW-4

DEPTH	I	BLOW CTS	MATERIAL ENCOUNTERED	USCS
-			Hand excavated first four feet.	
-			Loose, damp, dark green, silty SAND No HC odor.	SM
-		18-20-25	4.0' to 6.0' Loose, damp, dusky yellowish green, gravelly, silty SAND, poorly graded.	SW/SM
5'		5-5-7	6.0' to 8.5' Loose, damp, black, organic SILT, trace of gravel.	CH
-		7-6-9		
-	←	10-12-8	8.5' to 10.0' Loose, damp, black, silty SAND, fine- to coarse-grained, trace of gravel.	SM
-			GROUND WATER ENCOUNTERED AT 10 FEET.	
10'		5-8-45	10.0' to 11.5' Loose, saturated, black, gravelly SAND, fine- to coarse-grained, trace of silt	SW
-		3-4-6	11.5' to 13.8' Soft, saturated, black, silty CLAY, trace of sand, some gravel. Becoming moist at 13.5'.	CH
-		8-8-5	13.8' to 14.5' Loose, saturated, olive gray SAND, fine- to coarse-grained SAND.	SW
15'				

HC = Hydrocarbon  
 VMR = Vapor Meter Reading  
 I = Sampling Interval  
 Total Depth = 14.5 feet.

← = Sample Analyzed for HC concentration  
 ppm = Parts per Million  
 LEL = Lower Explosion Limit  
 NOTE: Bottom of hole plugged with bentonite to 13.5'

# ALTON GEOSCIENCE BORING LOG

PROJECT 25-157

BORING DATE 3/7/88

LOCATION: EMERYVILLE CA

GEOLOGIST: T FOX / S DEFIBAUGH

TYPE: 8" HSA

BORING NO.: B-9 / M'W-5

DEPTH	I	BLOW CTS	MATERIAL ENCOUNTERED	USCS
0			Hand excavated first four feet.	
0			Loose, damp, dusky yellowish green SAND, fine-grained, occasional shell fragments.	SP
4		4-7-8	Loose, damp, light olive brown SAND, fine-grained.	SP
5	++			
8			8.0' to 9.5' Loose, wet, black SAND, fine- to medium-grained.	SW
9		8-4-5	9.5' to 10.0' Medium stiff, wet, dusky green, silty CLAY, some sand. Ground water at 9.5'.	CL
10			10.0' to 16.0' Loose, saturated, dusky green SAND, fine-grained, well sorted.	SP
10		6-7-8		
16		4-3-2	16.0' to 16.5' Medium stiff, wet, greenish black, sandy CLAY.	CL
15		2-5-6	16.5' Dense, moist, dusky blue green SAND, fine-grained, partially indurated.	SP

HC = Hydrocarbon  
 VMR = Vapor Meter Reading  
 I = Sampling Interval  
 Total Depth = 16.5 feet.

++ = Sample Analyzed for HC concentration  
 ppm = Parts per Million  
 LEL = Lower Explosion Limit  
 NOTE: Bottom of hole plugged with bentonite to 13.5'

# ALTON GEOSCIENCE BORING LOG

PROJECT: 25-157

BORING DATE: 3/8/88

LOCATION: EMERYVILLE, CA

GEOLOGIST: T. FOX / S. DEFIBAUGH

TYPE: 8" HSA

BORING NO.: B-10 MW-6

DEPTH	I	BLOW CTS	MATERIAL ENCOUNTERED	USCS
-			Hand excavated first four feet.	
			Loose, dry, black, gravelly SAND, poorly graded.	SW
5'	++	5-5-8	4.0' to 4.5' Stiff, moist, bluish green, sandy CLAY.	CL
			4.5' to 4.9' Loose, moist, olive gray SAND, fine-grained.	SP
			4.9' to 5.2' Medium stiff, moist, dusky brown, silty CLAY, occasional organics.	CL
10'		5-6-4	GROUND WATER AT 7.0'	
			8.0' to 9.0' Medium stiff, moist to wet, dusky brown silty CLAY, some gravel, occasional mottled bluish green lenses.	CL
15'		12-22-25	13.0' to 14.0' Loose to dense, saturated, olive gray, silty SAND, fine- to coarse-grained, shell fragments, trace of gravel.	SM
		10-12-15	14.0' to 15.0' Dense saturated, orangish brown, gravelly SAND.	SW

HC = Hydrocarbon  
 VMR = Vapor Meter Reading  
 I = Sampling Interval  
 Total Depth = 16.0 feet

++ = Sample Analyzed for HC concentration  
 ppm = Parts per Million  
 LEL = Lower Explosion Limit  
 NOTE: Bottom of hole plugged with bentonite to 13.5'

# ALTON GEOSCIENCE BORING LOG

PROJECT: 25-157

BORING DATE: 3/9/88

LOCATION: EMERYVILLE CA

GEOLOGIST: T FOX / S DEFIBAUGH

TYPE: 8" AND 10" HSA

BORING NO: B-11 / MW-7

DEPTH	I	BLOW CTS	MATERIAL ENCOUNTERED	USCS
-			Hand excavated first four feet.	
-			Loose, dry, moderate yellowish brown, gravelly SAND.	SW
-		5-8-6	Loose, dry, dusky yellowish green SAND, fine-grained, trace gravel to 7.0', some black staining 4.5' to 7.0'.	SP
5'		6-4-3	7.0' to 7.5' Stiff, moist, black, silty CLAY.	OH
-		5-6-5	9.0' to 12.5' Soft to medium stiff, moist to wet, black silty CLAY, occasional thin lenses of dusky yellowish green sand.	OH
10'		4-5-6	12.5' to 12.9' Loose, saturated, dusky yellowish green, gravelly SAND, fine- to coarse-grained sand.	SW
-		6-4-4	Loose, saturated, dusky yellowish green, gravelly SAND, fine- to coarse-grained.	SW
15'		11-11-10	15.0 to 15.3 Loose to slightly dense, saturated, olive gray, fine-grained SAND.	SP
-			15.3 to 15.7 Soft, moist, black, silty CLAY, some sand.	CL
-			15.7 to 16.6 Loose, saturated, olive gray fine-grained SAND; shell fragments.	SP

HC = Hydrocarbon  
 VMR = Vapor Meter Reading  
 I = Sampling Interval  
 Total Depth = 17.0 feet

++ = Sample Analyzed for HC concentration  
 ppm = Parts per Million  
 LEL = Lower Explosion Limit  
 NOTE: Bottom of hole plugged with bentonite to 13.5'

# ALTON GEOSCIENCE BORING LOG

PROJECT 25-157

BORING DATE 3/9/88

LOCATION: EMERYVILLE, CA

GEOLOGIST: T. FOX / S. DEFIBAUGH

TYPE: 8" HSA

BORING NO.: B-12 / MW-8

DEPTH	I	BLOW CTS	MATERIAL ENCOUNTERED	USCS
-			Hand excavated first four feet.	
-			Sheeting material at 2.5'. Soft, saturated, grayish olive, gravelly, silty CLAY.	CL
-		5-3-4	Medium stiff, moist, dusky yellowish brown, silty CLAY, some sand.	CL
5'	←		----- GROUND WATER ENCOUNTERED AT 6'. -----	
-		3-2-4	8.0' to 8.1' Loose, saturated, light olive gravelly SAND. 8.1' to 9.5' Soft, wet black, CLAY, organic, trace of silt, occasional sand lenses.	SW OH
10'			Medium stiff, wet, black CLAY, trace of silt, to 13'.	OH
-		8-9-10	At 13' Stiff, moist, dark yellowish orange, sandy CLAY, occasional mottled grayish yellow green streaks.	CL
15'				

HC = Hydrocarbon                      ++ = Sample Analyzed for HC concentration  
 VMR = Vapor Meter Reading           ppm = Parts per Million  
 I = Sampling Interval                   LEL = Lower Explosion Limit  
 Total Depth = 13.5 feet.

# ALTON GEOSCIENCE BORING LOG

PROJECT: 25-157

BORING DATE: 3/9/88

LOCATION: EMERYVILLE CA

GEOLOGIST: T. FOX / S. DEFIBAUGH

TYPE: 8" HSA

BORING NO.: B-13 / MW-9

DEPTH	I	BLOW CTS	MATERIAL ENCOUNTERED	USCS
0			Hand excavated first four feet.	
4			Loose, damp, black, clayey SAND, fine-grained, trace gravel.	SC
5		10-10-6	Medium stiff to stiff, wet, dark olive gray CLAY, trace of sand.	CL
7	↔		GROUND WATER ENCOUNTERED AT 7.0'	
8		3-2-2	Soft to medium stiff, wet, black, silty CLAY, occasional organics.	OH
10				
11		7-9-5	Slightly dense, saturated, grayish olive SAND, fine-grained, trace to some clay.	SP
12.5			At 12.5 Loose, saturated, dark yellowish orange, gravelly sand.	SW
15				

HC = Hydrocarbon  
 VMR = Vapor Meter Reading  
 I = Sampling Interval  
 Total Depth = 13.0 feet.

↔ = Sample Analyzed for HC concentration  
 ppm = Parts per Million  
 LEL = Lower Explosion Limit



# ALTON GEOSCIENCE BORING LOG

PROJECT: 25-157

BORING DATE: 3/9/88

LOCATION: EMERYVILLE CA

GEOLOGIST: T FOX / S DEFIBAUGH

TYPE: 8" HSA

BORING NO.: B-14 / MW-10

DEPTH	I	BLOW CTS	MATERIAL ENCOUNTERED	USCS
0			Hand excavated first four feet.	
0			Loose, wet, dusky yellowish brown, gravelly SAND.	SW
5'		6-6-6	4.0' to 5.0' Soft, moist, black, silty CLAY.	OH
5'	←		5.0' to 5.5' Loose, moist, black, organic SAND, fine- to medium-grained, occasional thin lenses of olive gray clay.	SP
8'		1-2-3	8.0' to 8.3' Loose, moist, black, organic SAND, fine- to medium-grained, occasional thin lenses of olive gray clay.	SP
8'			8.3' to 9.5' Loose to slightly dense, saturated, olive gray SAND, some clay.	SP
10'			Grades into soft, saturated, olive gray to olive black silty CLAY.	OH
10'			Soft, saturated, olive gray to olive black, silty CLAY.	OH
10'		6-6-6	At 11.5' Stiff, moist, mottled olive gray and dark yellowish orange, sandy clay.	CL
15'				

HC = Hydrocarbon

VMR = Vapor Meter Reading

I = Sampling Interval

Total Depth = 12.5 feet.

++ = Sample Analyzed for HC concentration

ppm = Parts per Million

LEL = Lower Explosion Limit





# ALTON GEOSCIENCE BORING LOG

PROJECT: 25-157

BORING DATE: 3/10/88

LOCATION: EMERYVILLE, CA

GEOLOGIST: T FOX / S DEFIBAUGH

TYPE: 8" HSA

BORING NO.: B-18 / MW-14

DEPTH	I	BLOW CTS	MATERIAL ENCOUNTERED	USCS
0 - 4'			Hand excavated first four feet.	
4' - 5'		7-6-5	Medium stiff, moist, dusky brown, silty CLAY, trace of sand and gravel.	CL
5' - 8'		11-7-5	Medium stiff, moist, dusky brown, silty CLAY, occasional light olive green clayey sand lenses.	CL
8'			GROUND WATER ENCOUNTERED AT 8.0'	
8' - 9.0'		7-6-3	9.0' to 9.2' Loose, saturated, black, gravelly SAND.	SW
9.0' - 10.5'			9.2' to 10.5' Medium stiff, wet, black, silty CLAY. Grades into loose, saturated, light olive gray, clayey SAND. Appears to be free product in the sample.	OH/SC
10.5' - 11.0'		5-3-3	11.0' to 11.2' Soft, wet, black silty CLAY.	OH
11.0' - 11.7'			11.2' to 11.7' Medium stiff, moist, mottled light yellowish orange and light olive gray, sandy CLAY. Grades into soft, saturated, black silty CLAY, occasional shell fragments	CL OH
11.7' - 12.5'				

HC = Hydrocarbon  
 VMR = Vapor Meter Reading  
 I = Sampling Interval  
 Total Depth = 12.5 feet.

++ = Sample Analyzed for HC concentration  
 ppm = Parts per Million  
 LEL = Lower Explosion Limit

# ALTON GEOSCIENCE BORING LOG

PROJECT: 25-157

BORING DATE: 3/11/88

LOCATION: EMERYVILLE CA

GEOLOGIST: T FOX / S DEFIBAUGH

TYPE: 8" AND 10" HSA

BORING NO.: B-21 / MW-17

DEPTH	I	BLOW CTS	MATERIAL ENCOUNTERED	USCS
0			Hand excavated first four feet.	
5'		40-43-31	4.0' to 4.5' Loose, dry, dusky yellowish brown gravelly SAND. 4.5' to 4.8' Loose, saturated, black gravelly SAND. 4.8' to 4.9' Loose, saturated, olive gray SAND, fine-grained. 4.9' to 5.3' Soft, wet, black, silty CLAY.	SW SW SP OH
10'		19-24-23	8.0' to 8.3' Loose, saturated, black, silty SAND. 8.3' to 8.8' Soft, saturated, black, silty CLAY. 8.8' to 9.1' Loose, saturated, olive gray SAND, fine-grained, trace silt. 9.1' to 9.4' Soft, wet, olive gray CLAY.	SM OH SP OH
15'		3-2-3-11	12.0' to 12.9' Loose, saturated, black, gravelly SAND, some clay. 12.9' to 14.0' Medium stiff, moist, grayish olive green, silty CLAY, some organics	SW OH

HC = Hydrocarbon  
VMR = Vapor Meter Reading  
I = Sampling Interval  
Total Depth = 14.0 feet.

++ = Sample Analyzed for HC concentration  
ppm = Parts per Million  
LEL = Lower Explosion Limit

# ALTON GEOSCIENCE BORING LOG

PROJECT: 25-157

BORING DATE: 3/11/88

LOCATION: EMERYVILLE CA

GEOLOGIST: T FOX / S DEFIBAUGH

TYPE: 8" HSA

BORING NO.: B-22 / MW-18

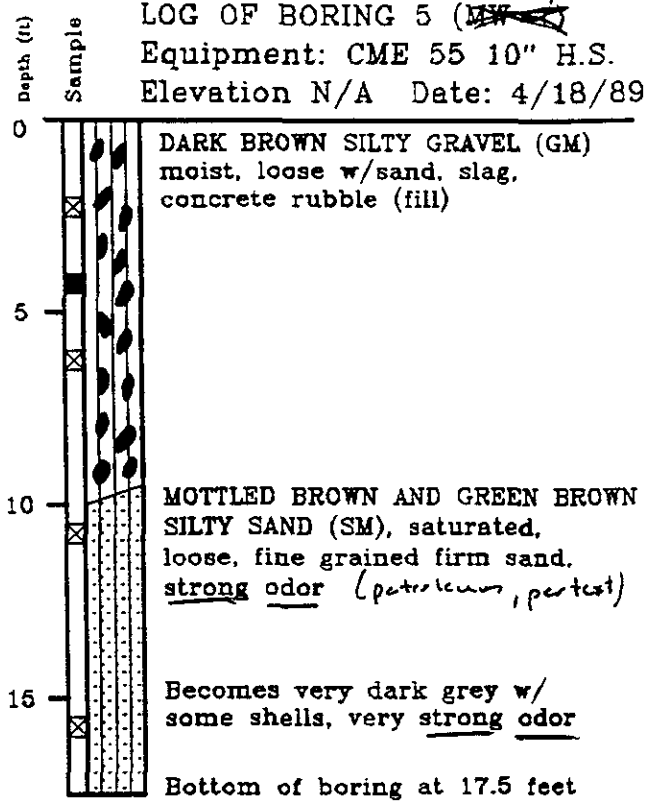
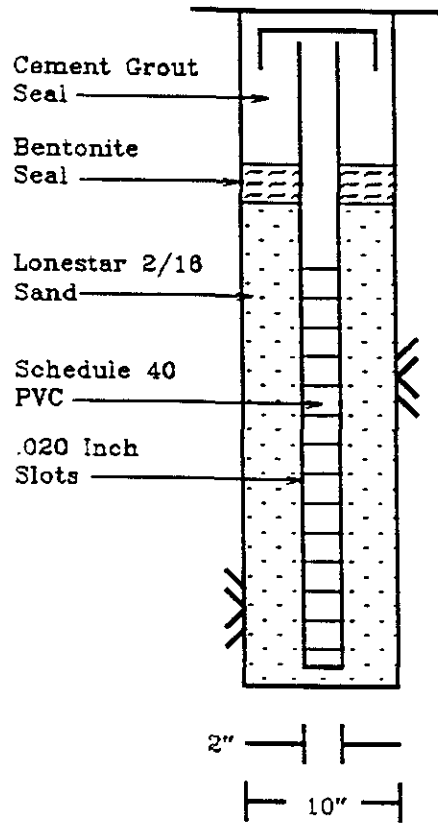
DEPTH	I	BLOW CTS	MATERIAL ENCOUNTERED	USCS
0			Hand excavated first four feet.	
5		1-2-1-3	4.0' to 4.5' Loose, saturated, olive gray SAND, fine-grained. 4.5' to 5.3' Loose, saturated, black, organic SAND, fine-grained, occasional lenses of soft, black silty clay.	SP SP
		6-2-2-4	8.0' to 8.5' Loose, saturated, olive gray SAND, some gravel and clay. occasional shell fragments.	SP
			8.5' to 9.5' Soft, saturated, dusky yellowish green, sandy CLAY, some gravel.	CL
10		3-2-2-3	Medium stiff, moist, olive gray, silty CLAY, trace sand, occasional organics.	CH
15				

HC = Hydrocarbon  
VMR = Vapor Meter Reading  
I = Sampling Interval  
Total Depth = 12.0 feet.

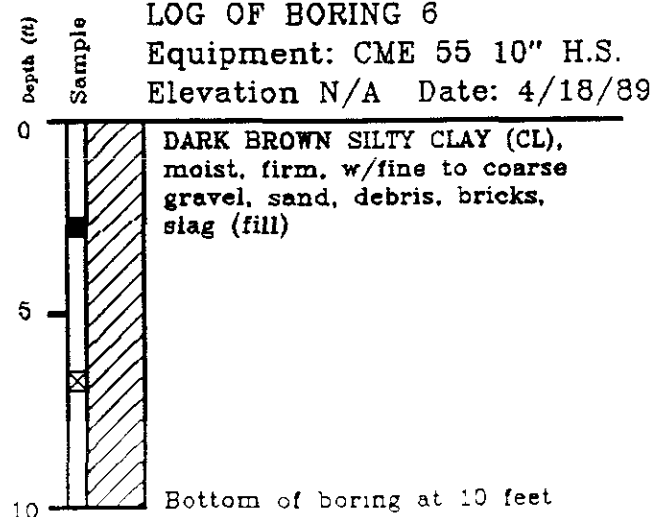
++ = Sample Analyzed for HC concentration  
ppm = Parts per Million  
LEL = Lower Explosion Limit

MG-1

LOG OF BORING 5  
Equipment: CME 55 10" H.S.  
Elevation N/A Date: 4/18/89



LOG OF BORING 6  
Equipment: CME 55 10" H.S.  
Elevation N/A Date: 4/18/89



LOGS OF BORINGS 5 (~~MW-1~~) AND 6  
Marriott Project C943 MG-1  
Emeryville, California

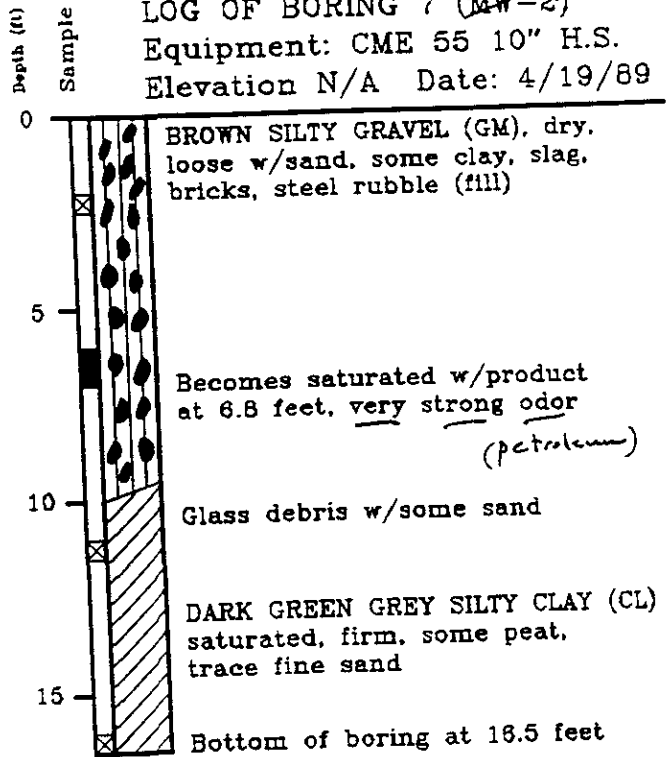
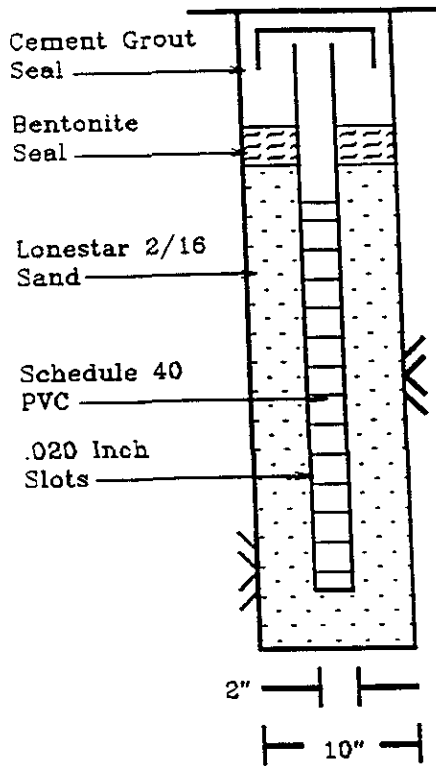
PLATE  
3

**T** TRANS TECH CONSULTANTS  
HYDROGEOLOGISTS AND ENGINEERS

DRAWN SMR	JOB NUMBER 1017 07.01	APPROVED DGM	DATE 5/31/89
--------------	--------------------------	-----------------	-----------------

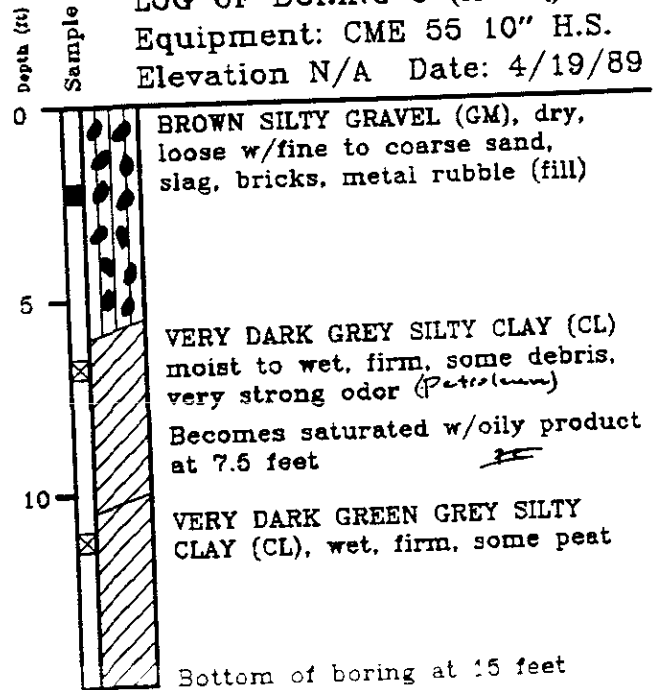
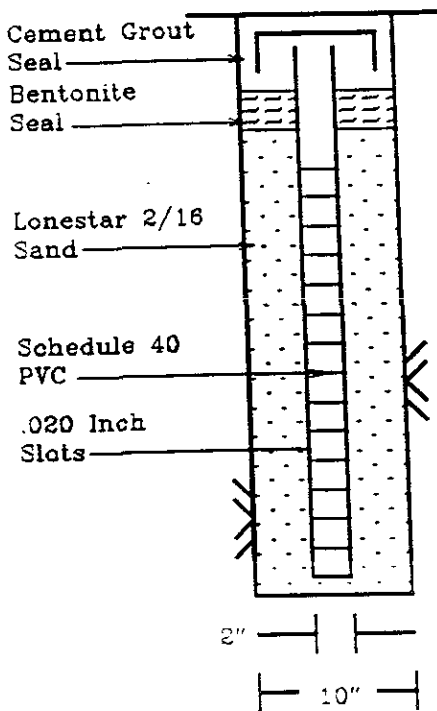
MG-2

LOG OF BORING 7 (~~MW-2~~)  
Equipment: CME 55 10" H.S.  
Elevation N/A Date: 4/19/89



MG-3

LOG OF BORING 8 (~~MW-3~~)  
Equipment: CME 55 10" H.S.  
Elevation N/A Date: 4/19/89



**TRANS TECH CONSULTANTS**  
HYDROGEOLOGISTS AND ENGINEERS

LOGS OF BORINGS 7 (~~MW-2~~) AND 8 (~~MW-3~~)  
Marriott Project C943  
Emeryville, California

PLATE

4

DRAWN: SMR  
JOB NUMBER: 1017.07.01

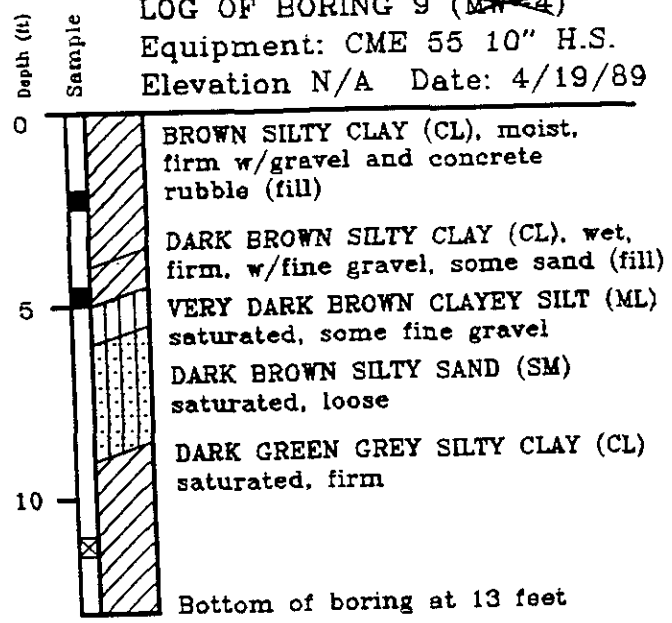
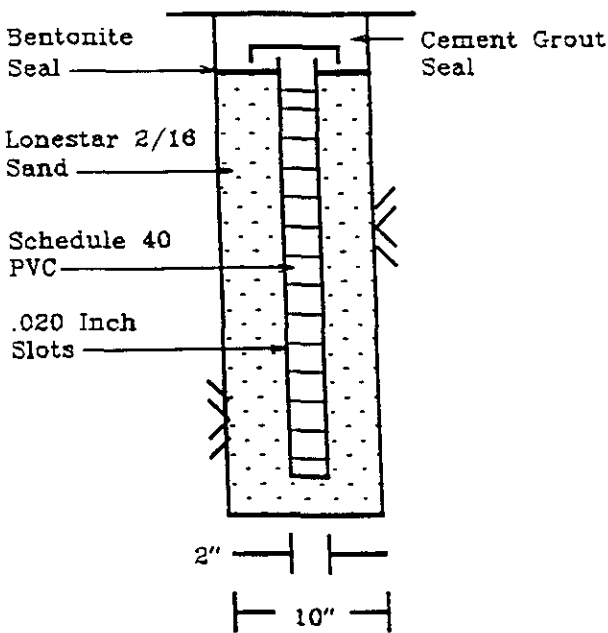
APPROVED: DGM

DATE: 5/31/89



MG-4

LOG OF BORING 9 (MW-4)  
Equipment: CME 55 10" H.S.  
Elevation N/A Date: 4/19/89



**TRANS TECH CONSULTANTS**  
HYDROGEOLOGISTS AND ENGINEERS

LOG OF BORING 9 (MW-4)  
Marriott Project C943 MG-4  
Emeryville, California

PLATE



DRAWN SMR JOB NUMBER 1017 07.01

APPROVED OGM

DATE 5/31/89

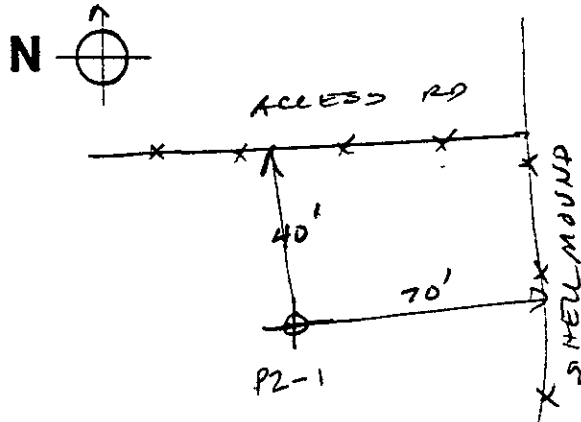


# FIELD LITHOLOGIC LOG

BORING, NO. \_\_\_\_\_  
 WELL, NO. P2-1  
 PIT/TRENCH, NO. \_\_\_\_\_

PROJECT: SHELL MOUND  
 JOB NO.: M6002F  
 PROJECT MANAGER: J. OLIVER  
 LOGGED BY: J. GILL  
 CONTRACTOR: WEEKS  
 LICENSE NO: 177681 TYPE C-57  
 EQUIPMENT TYPE: MOBIL  
 SAMPLING METHOD:  CUTTINGS  
 DRIVE, WT.: 140, DROP: 30"  
 OTHER: \_\_\_\_\_  
 SAMPLER TYPE: CAL SPLT 2 1/2"  
 START/STOP TIME: 12:54/2:45 DATE: 3/18/91  
 BACKFILL METHOD: GROUT  
 SURFACE ELEV.: \_\_\_\_\_ DATUM: \_\_\_\_\_  
 SURFACE CONDITION: ROUGH LEVEL  
 WEATHER: COOL, CLOUDY, WIND 5-10 mph.

LOCATION SKETCH



COMMENTS  
TIME

DEPTH (ft)	SAMPLE LOC.	RECOVERY	SENT TO LAB.	BLOWS PER 6 IN.	<input type="checkbox"/> FID <input type="checkbox"/> PPB <input type="checkbox"/> PPM	GW DEPTH	GRAPHIC LOG	COMMENTS:
								LITHOLOGIC DESCRIPTION
1								VERY DARK GREY BROWN TO BLACK FINE - GRADED GRAVEL W/ CLAY (GW) DENSE, MOIST. 20-25% CLAY. (FILL)
2								
3								COLOR CHANGE TO LIGHT BROWNISH GREY.
4		-		3				
5		-		6				
6	X X X			?	0			(BLACK SLUDGE ON TOP OF SAMPLE) VERY DARK GREENISH GREY TO BLACK SILT WITH SAND (ML) VERY SOFT, SATURATED. 25-30% FB-MG SAND. PREVIOUS ODDER T SHEEN. GREEN STAINING.
7								
8								VERY DARK GREY WITH GREEN FINELY GRADED SAND (SP) DENSE SATURATED. FB-MG SAND. 5-10% SHELL FRAG. FROM 0-5000.
9								
10								

AUGER WENT INCOMPLETE SAMPLE

VERY SOFT

LOGGED BY: J. Gill

EDITED BY: \_\_\_\_\_

# FIELD LITHOLOGIC LOG (CONTINUED)

CALLER NO

DEPTH (M)	SAMPLE LOC.	RECOVERY	SENT TO LAB.	BLOWS PER 6-IN.	<input type="checkbox"/> FID <input checked="" type="checkbox"/> R/D <input type="checkbox"/> P/B <input type="checkbox"/> P/P	GW DEPTH	GRAPHIC LOG	PROJECT: SHELL MOUND	PAGE 2 OF 2
								JOB NO: M6002F	
								<input type="checkbox"/> BORING <input checked="" type="checkbox"/> WELL <input type="checkbox"/> PIT/TRENCH NO.: P2-1	
								LITHOLOGIC DESCRIPTION	
11		X		1				VERY DARK GREENISH GREY CLAY W/SAND (MH)	
		X		1				SOFT SATUR. HIGH PLASTICITY, 20-25%	
		X		3	0			VF6-F6 SAND. ROOTS + ORGANIC DEBRIS.	
12									
13									
14		X		1					
		X		2	0				
15		X		4				BOTTOM OF BORING @ 15.0	
6									
7									
8									
9									
0									
1									
2									
3									
4									
5									
6									
7									
8									
9									
0									

1:30

# FIELD WELL COMPLETION FORM

JOB NAME: SHELLMOUND

JOB NUMBER: M6002F PROJECT MANAGER: J. OLIVER

LOGGED BY: J. GILL EDITED BY: \_\_\_\_\_

WELL NAME: P2-1 DATE: 3/16/91

DRILLING COMPANY: WHEELS

EQUIPMENT:  8 INCH HOLLOW STEM AUGER DRILLER: GARY  
 \_\_\_\_\_ INCH ROTARY WASH HOURS DRILLED: \_\_\_\_\_

GALLONS OF WATER USED DURING DRILLING: \_\_\_\_\_ GALLONS

METHOD OF DECONTAMINATION PRIOR TO DRILLING: STEAM - PRESSURE

**DEVELOPMENT**

METHOD OF DEVELOPMENT: \_\_\_\_\_

DEVELOPMENT BEGAN DATE: \_\_\_\_\_ TIME: \_\_\_\_\_

YIELD:	GPM	TIME: FROM	TO	DATE:

TOTAL WATER REMOVED DURING DEVELOPMENT: \_\_\_\_\_ GALLONS

DESCRIPTION OF TURBIDITY AT END OF DEVELOPMENT:  CLEAR  SLIGHTLY CLOUDY  
 MOD. TURBID  VERY MUDDY

ODOR OF WATER: \_\_\_\_\_

WATER DISCHARGED TO:  GROUND SURFACE  TANK TRUCK  
 STORM SEWERS  STORAGE TANK  
 DRUMS  OTHER \_\_\_\_\_

DEPTH TO WATER AFTER DEVELOPMENT: \_\_\_\_\_ FEET

**MATERIALS USED**

\_\_\_\_\_ SACKS OF \_\_\_\_\_ SAND

\_\_\_\_\_ SACKS OF \_\_\_\_\_ CEMENT

\_\_\_\_\_ GALLONS OF GROUT USED

\_\_\_\_\_ SACKS OF POWDERED BENTONITE

\_\_\_\_\_ POUNDS OF BENTONITE PELLETS

\_\_\_\_\_ FEET OF \_\_\_\_\_ INCH PVC BLANK CASING

\_\_\_\_\_ FEET OF \_\_\_\_\_ INCH PVC SLOTTED SCREEN

\_\_\_\_\_ FEET OF \_\_\_\_\_ INCH STEEL CONDUCTOR CASING

\_\_\_\_\_ YARD<sup>3</sup> CEMENT-SAND (REDI-MIX) ORDERED

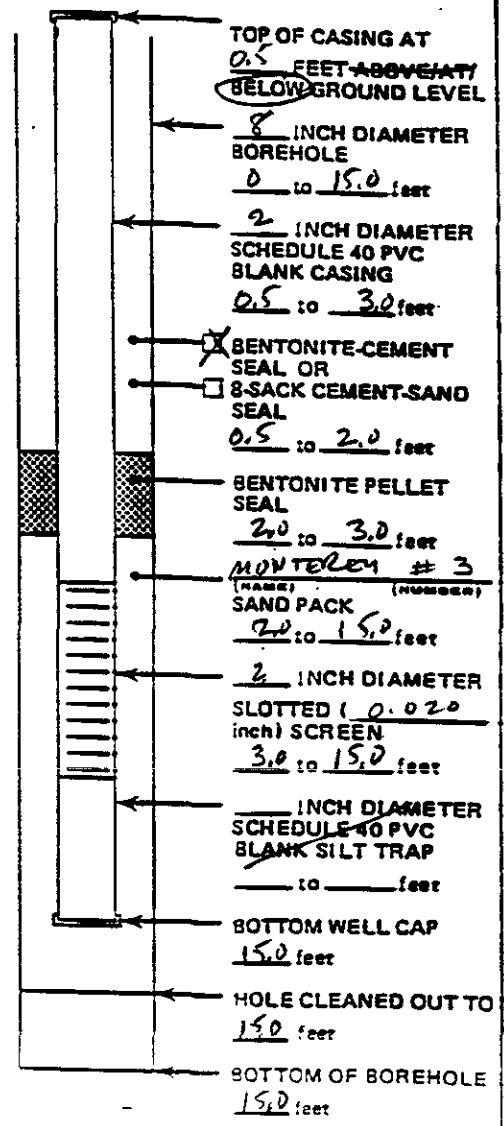
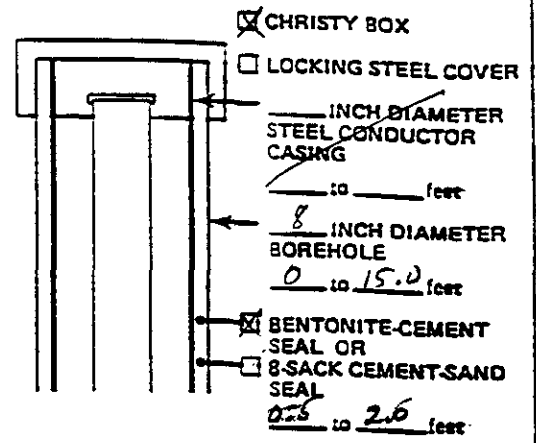
\_\_\_\_\_ YARD<sup>3</sup> CEMENT-SAND (REDI-MIX) USED

CONCRETE PUMPER USED?  NO  YES

NAME \_\_\_\_\_

WELL COVER USED:  LOCKING STEEL COVER  
 CHRISTY BOX  
 OTHER \_\_\_\_\_

SILT TRAP USED?  NO  YES



NOT TO SCALE

ADDITIONAL INFORMATION: \_\_\_\_\_

\_\_\_\_\_

\_\_\_\_\_

\_\_\_\_\_

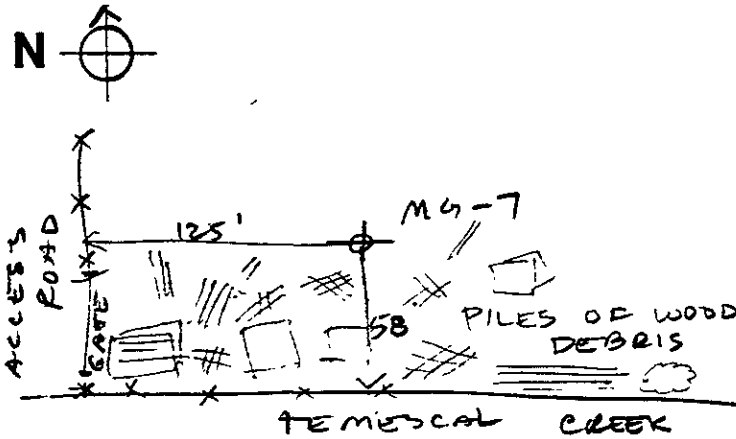
DATE: 3/18/91

# FIELD LITHOLOGIC LOG

BORING, NO. \_\_\_\_\_  
 WELL, NO. M4-7  
 PIT/TRENCH, NO. \_\_\_\_\_

PROJECT: STELMOUND  
 JOB NO.: 116 002 F  
 PROJECT MANAGER: J. OLIVER  
 LOGGED BY: J. GILL  
 CONTRACTOR: WEEKS  
 LICENSE NO: 177681 TYPE: C-57  
 EQUIPMENT TYPE: MOBIL  
 SAMPLING METHOD:  CUTTINGS  
 DRIVE, WT.: 146 , DROP: 30  
 OTHER:  
 SAMPLER TYPE: COB SPLIT 2 1/2"  
 START/STOP TIME: 8:45 / DATE: 3/18/91  
 BACKFILL METHOD:  
 SURFACE ELEV.: DATUM:  
 SURFACE CONDITION: LEVEL GRAVEL  
 WEATHER: COOL, LITTLE WIND, SUNNY, CLEAR

LOCATION SKETCH



COMMENTS

TIME

DEPTH (M)	SAMPLE LOC.	RECOVERY	SENT TO LAB.	BLOWS PER 6-IN.	<input type="checkbox"/> FID <input checked="" type="checkbox"/> PID	<input type="checkbox"/> PPB <input type="checkbox"/> PPM	GW DEPTH	GRAPHIC LOG	COMMENTS:	LITHOLOGIC DESCRIPTION
1									REFUSAL @ 7.5 IN FIRST ATTEMPT. MOVED 5' N.	GRAVEL (FILL). SLAG, WOOD, BRICK, + METAL DEBRIS.
2						0				
3										
4										TRACE CLAY + SAND CONTENT.
5				14						
6	X			33		0				
7	X			18						
8	X	X							WATER ENCOUNTERED AT 8.0. FAINT PRODUCT ODR.	
9										
10	X									SARK (SAND) (SAND) WELL-GRADED SAND + CLAY (SAND) (SAND) (SAND) (SAND)

PROB: AUGER SLIGHTLY BRANT. COUNT IS EXAGGERATED  
 MAY 2003 3'

9:00 TIME  
 7:17

LOGGED BY: Jane Gill

EDITED BY:



# FIELD WELL COMPLETION FORM

JOB NAME: SHELLMOUND

JOB NUMBER: MG002F PROJECT MANAGER: J. OLIVER

LOGGED BY: J. GILL EDITED BY:

WELL NAME: MG-7 DATE: 3/18/91

DRILLING COMPANY: WHEELS

EQUIPMENT:  8 INCH HOLLOW STEM AUGER DRILLER: GARY

INCH ROTARY WASH HOURS DRILLED: 3.5

GALLONS OF WATER USED DURING DRILLING: \_\_\_\_\_ GALLONS

METHOD OF DECONTAMINATION PRIOR TO DRILLING: STEAM / PRESSURE

## DEVELOPMENT

METHOD OF DEVELOPMENT:

DEVELOPMENT BEGAN DATE: \_\_\_\_\_ TIME: \_\_\_\_\_

YIELD:	GPM	TIME: FROM	TO	DATE:
YIELD:	GPM	TIME: FROM	TO	DATE:
YIELD:	GPM	TIME: FROM	TO	DATE:
YIELD:	GPM	TIME: FROM	TO	DATE:

TOTAL WATER REMOVED DURING DEVELOPMENT: \_\_\_\_\_ GALLONS

DESCRIPTION OF TURBIDITY AT END OF DEVELOPMENT:  CLEAR  SLIGHTLY CLOUDY  MOD. TURBID  VERY MUDDY

ODOR OF WATER:

WATER DISCHARGED TO:  GROUND SURFACE  TANK TRUCK  STORM SEWERS  STORAGE TANK  DRUMS  OTHER

DEPTH TO WATER AFTER DEVELOPMENT: \_\_\_\_\_ FEET

## MATERIALS USED

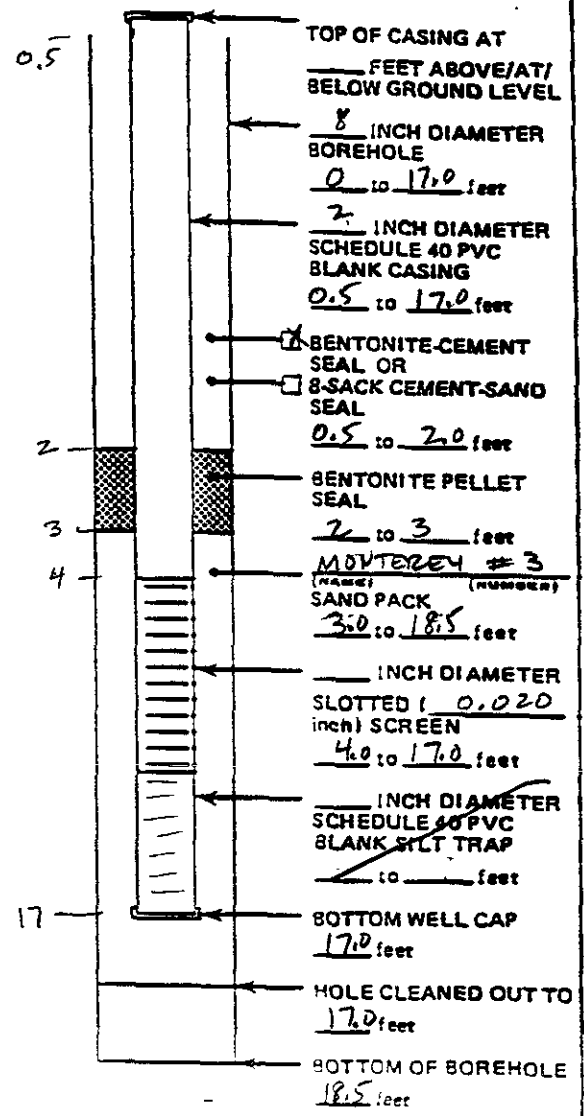
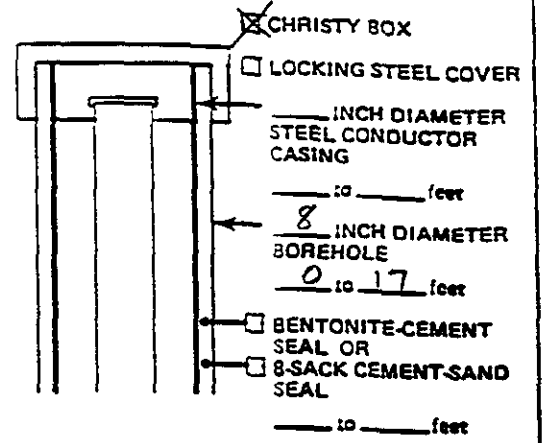
- \_\_\_\_\_ SACKS OF \_\_\_\_\_ SAND
- \_\_\_\_\_ SACKS OF \_\_\_\_\_ CEMENT
- \_\_\_\_\_ GALLONS OF GROUT USED
- \_\_\_\_\_ SACKS OF POWDERED BENTONITE
- \_\_\_\_\_ POUNDS OF BENTONITE PELLETS
- \_\_\_\_\_ FEET OF \_\_\_\_\_ INCH PVC BLANK CASING
- \_\_\_\_\_ FEET OF \_\_\_\_\_ INCH PVC SLOTTED SCREEN
- \_\_\_\_\_ FEET OF \_\_\_\_\_ INCH STEEL CONDUCTOR CASING
- \_\_\_\_\_ YARD<sup>3</sup> CEMENT-SAND (REDI-MIX) ORDERED
- \_\_\_\_\_ YARD<sup>3</sup> CEMENT-SAND (REDI-MIX) USED

CONCRETE PUMPER USED?  NO  YES

NAME \_\_\_\_\_

WELL COVER USED:  LOCKING STEEL COVER  CHRISTY BOX  OTHER \_\_\_\_\_

SILT TRAP USED?  NO  YES



NOT TO SCALE

ADDITIONAL INFORMATION: \_\_\_\_\_

\_\_\_\_\_

\_\_\_\_\_

\_\_\_\_\_

**APPENDIX B**





NorCal Division (San Jose Laboratory)  
 2059 Junction Ave.

San Jose, CA 95131  
 (408) 955-9077

CLIENT: John Skalbeck  
 PES Environmental Inc  
 1682 Novato Boulevard, Suite 100  
 Novato, CA 94947

Lab Number : JJ-2402-17  
 Project : 241.0102.002, Powell St.  
 Plaza  
 Analyzed : 11/14/93  
 Analyzed by: TN  
 Method : EPA 8080

REPORT OF ANALYTICAL RESULTS

SAMPLE DESCRIPTION	MATRIX	SAMPLED BY	SAMPLED DATE RECEIVED	
93450017	Free Product/ Liquid	Bryan Smith	11/10/93	11/10/93

CONSTITUENT	(CAS RN)	*PQL mg/Kg	RESULT mg/Kg	NOTE
<b>ORGANOCHLORINE PESTICIDES AND PCBs</b>				
Aldrin	(5972608)	0.5	ND	
alpha-BHC	(319846)	0.5	ND	
beta-BHC	(319857)	0.5	ND	
delta-BHC	(319868)	0.5	ND	
gamma-BHC (Lindane)	(58899)	0.5	ND	
Chlordane	(57749)	10.	ND	
4,4'-DDD	(72548)	0.5	ND	
4,4'-DDE	(72559)	0.5	ND	
4,4'-DDT	(50293)	0.5	ND	
Dieldrin	(60571)	0.5	ND	
Endosulfan I	(959988)	0.5	ND	
Endosulfan II	(33213659)	0.5	ND	
Endosulfan Sulfate	(1031078)	0.5	ND	
Endrin	(72208)	0.5	ND	
Endrin aldehyde	(7421934)	0.5	ND	
Heptachlor	(76448)	0.5	ND	
Heptachlor epoxide	(1024573)	0.5	ND	

San Jose Lab Certifications: CAELAP #1204

\*RESULTS listed as 'ND' were not detected at or above the listed PQL (Practical Quantitation) Limit)

(1) Sample Preparation on 11/12/93 by WP

Sample Name                      Well Name

11/19/93  
 ECD1-N12B021  
 DT/mcc/ttn  
 PEST111293

Note.

93450017	MW-13
93450020	MW-7



NorCal Division (San Jose Laboratory)  
2059 Junction Ave.

San Jose, CA 95131  
(408) 955-9077

CLIENT: John Skalbeck  
PES Environmental Inc  
1682 Novato Boulevard, Suite 100  
Novato, CA 94947

Lab Number : JJ-2402-17  
Project : 241.0102.002, Powell St.  
Plaza  
Analyzed : 11/14/93  
Analyzed by: TN  
Method : EPA 8080

REPORT OF ANALYTICAL RESULTS

SAMPLE DESCRIPTION	MATRIX	SAMPLED BY	SAMPLED DATE RECEIVED	
93450017	Free Product/ Liquid	Bryan Smith	11/10/93	11/10/93

CONSTITUENT	(CAS RN)	*PQL mg/Kg	RESULT mg/Kg	NOTE
Methoxychlor	(72435)	0.5	ND	
Toxaphene	(8001352)	50.	ND	
Aroclor 1016	(12674112)	10.	ND	
Aroclor 1221	(11104282)	10.	ND	
Aroclor 1232	(11141165)	10.	ND	
Aroclor 1242	(53469219)	10.	ND	
Aroclor 1248	(12672296)	10.	ND	
Aroclor 1254	(11097691)	10.	ND	
Aroclor 1260	(11096825)	10.	ND	

San Jose Lab Certifications: CAELAP #1204

\*RESULTS listed as 'ND' were not detected at or above the listed PQL (Practical Quantitation Limit)

11/19/93  
EOD1-N12B021  
DT/mcc/cen  
PEST111293

Respectfully submitted,  
COAST-TO-COAST ANALYTICAL SERVICES, INC.

*M. Torres*  
Dudley Torres  
Organics Manager



NorCal Division (San Jose Laboratory)  
 2059 Junction Ave.

San Jose, CA 95131  
 (408) 955-9077

CLIENT: John Skalbeck  
 PES Environmental Inc  
 1682 Novato Boulevard, Suite 100  
 Novato, CA 94947

Lab Number : JJ-2402-18  
 Project : 241.0102.002, Powell St.  
 Plaza  
 Analyzed : 11/14/93  
 Analyzed by: TN  
 Method : EPA 8080

REPORT OF ANALYTICAL RESULTS

SAMPLE DESCRIPTION	MATRIX	SAMPLED BY	SAMPLED DATE RECEIVED	
93450020	Free Product/ Liquid	Bryan Smith	11/10/93	11/10/93
CONSTITUENT	(CAS RN)	*PQL mg/Kg	RESULT mg/Kg	NOTE
ORGANOCHLORINE PESTICIDES AND PCBs				1
Aldrin	(5972608)	0.5	ND	
alpha-BHC	(319846)	0.5	ND	
beta-BHC	(319857)	0.5	ND	
delta-BHC	(319868)	0.5	ND	
gamma-BHC (Lindane)	(58899)	0.5	ND	
Chlordane	(57749)	10.	ND	
4,4'-DDD	(72548)	0.5	ND	
4,4'-DDE	(72559)	0.5	ND	
4,4'-DDT	(50293)	0.5	ND	
Dieldrin	(60571)	0.5	ND	
Endosulfan I	(959988)	0.5	ND	
Endosulfan II	(33213659)	0.5	ND	
Endosulfan Sulfate	(1031078)	0.5	ND	
Endrin	(72208)	0.5	ND	
Endrin aldehyde	(7421934)	0.5	ND	
Heptachlor	(76448)	0.5	ND	
Heptachlor epoxide	(1024573)	0.5	ND	

San Jose Lab Certifications: CAELAP #1204

\*RESULTS listed as 'ND' were not detected at or above the listed PQL (Practical Quantitation Limit)

(1) Sample Preparation on 11/12/93 by WP

11/19/93  
 ECD1-N12B022  
 DT/mcc/tcn  
 PEST111293



NorCal Division (San Jose Laboratory)  
 2059 Junction Ave.

San Jose, CA 95131  
 (408) 955-9077

CLIENT: John Skalbeck  
 PES Environmental Inc  
 1682 Novato Boulevard, Suite 100  
 Novato, CA 94947

Lab Number : JJ-2402-18  
 Project : 241.0102.002, Powell St.  
 Plaza  
 Analyzed : 11/14/93  
 Analyzed by: TN  
 Method : EPA 8080

REPORT OF ANALYTICAL RESULTS

Page 2 of 2

SAMPLE DESCRIPTION	MATRIX	SAMPLED BY	SAMPLED DATE RECEIVED	
93450020	Free Product/ Liquid	Bryan Smith	11/10/93	11/10/93

CONSTITUENT	(CAS RN)	*PQL mg/Kg	RESULT mg/Kg	NOTE
Methoxychlor	(72435)	0.5	ND	
Toxaphene	(8001352)	50.	ND	
Aroclor 1016	(12674112)	10.	ND	
Aroclor 1221	(11104282)	10.	ND	
Aroclor 1232	(11141165)	10.	ND	
Aroclor 1242	(53469219)	10.	ND	
Aroclor 1248	(12672296)	10.	ND	
Aroclor 1254	(11097691)	10.	ND	
Aroclor 1260	(11096825)	10.	ND	

San Jose Lab Certifications: CAELAP #1204

\*RESULTS listed as 'ND' were not detected at or above the listed PQL (Practical Quantitation Limit)

11/19/93  
 ECD1-N12B022  
 DT/mcc/ttn  
 PEST111293

Respectfully submitted,  
 COAST-TO-COAST ANALYTICAL SERVICES, INC.

*Dudley Torres*  
 Dudley Torres  
 Organics Manager



NorCal Division (San Jose Laboratory)  
 2059 Junction Ave.

San Jose, CA 95131  
 (408) 955-9077

QC Batch ID: PEST111293

CLIENT: Coast-to-Coast Analytical Services, Inc.

Analyzed : 11/13/93  
 Analyzed by: TN  
 Method : EPA 8080

METHOD BLANK  
 REPORT OF ANALYTICAL RESULTS

Page 1 of 2

SAMPLE DESCRIPTION	MATRIX	SAMPLED BY	SAMPLED DATE RECEIVED		
METHOD BLANK	Free Product/ Liquid				
CONSTITUENT	(CAS RN)	*PQL mg/Kg	RESULT mg/Kg	NOTE	
<b>ORGANOCHLORINE PESTICIDES AND PCBs</b>					
Aldrin	(5972608)	0.5	ND	1	
alpha-BHC	(319846)	0.5	ND		
beta-BHC	(319857)	0.5	ND		
delta-BHC	(319868)	0.5	ND		
gamma-BHC (Lindane)	(58899)	0.5	ND		
Chlordane	(57749)	10.	ND		
4,4'-DDD	(72548)	0.5	ND		
4,4'-DDE	(72559)	0.5	ND		
4,4'-DDT	(50293)	0.5	ND		
Dieldrin	(60571)	0.5	ND		
Endosulfan I	(959988)	0.5	ND		
Endosulfan II	(33213659)	0.5	ND		
Endosulfan Sulfate	(1031078)	0.5	ND		
Endrin	(72208)	0.5	ND		
Endrin aldehyde	(7421934)	0.5	ND		
Heptachlor	(76448)	0.5	ND		
Heptachlor epoxide	(1024573)	0.5	ND		
Methoxychlor	(72435)	0.5	ND		
Toxaphene	(8001352)	50.	ND		
Aroclor 1016	(12674112)	10.	ND		

San Jose Lab Certifications: CAELAP #1204

\*RESULTS listed as 'ND' were not detected at or above the listed PQL (Practical Quantitation Limit)

(1) Sample Preparation on 11/12/93 by WP

11/19/93  
 ECD1-N12B014  
 DT/mcc/tcn  
 JJ2402-18



NorCal Division (San Jose Laboratory)  
2059 Junction Ave.

San Jose, CA 95131  
(408) 955-9077

QC Batch ID: PEST111293

CLIENT: Coast-to-Coast Analytical Services, Inc.

Analyzed : 11/13/93  
Analyzed by: TN  
Method : EPA 8080

METHOD BLANK  
REPORT OF ANALYTICAL RESULTS

SAMPLE DESCRIPTION	MATRIX	SAMPLED BY	SAMPLED DATE RECEIVED		
METHOD BLANK	Free Product/ Liquid				
CONSTITUENT	(CAS RN)	*PQL mg/Kg	RESULT mg/Kg	NOTE	
Aroclor 1221	(11104282)	10.	ND		
Aroclor 1232	(11141165)	10.	ND		
Aroclor 1242	(53469219)	10.	ND		
Aroclor 1248	(12672296)	10.	ND		
Aroclor 1254	(11097691)	10.	ND		
Aroclor 1260	(11096825)	10.	ND		

San Jose Lab Certifications: CAELAP #1204

\*RESULTS listed as 'ND' were not detected at or above the listed PQL (Practical Quantitation Limit)

11/19/93  
ECD1-N12B014  
DT/mcc/ttr  
JJ2402-18

Respectfully submitted,  
COAST-TO-COAST ANALYTICAL SERVICES, INC.

*Dudley Torres*  
Dudley Torres  
Organics Manager



NorCal Division (San Jose Laboratory)  
2059 Junction Ave.

San Jose, CA 95131  
(408) 955-9077

QC Batch ID: PEST111293

CLIENT: Coast-to-Coast Analytical Services, Inc.

Analyzed : 11/14/93  
Analyzed by: TN  
Method : EPA 8080

QC SPIKE  
REPORT OF ANALYTICAL RESULTS

Page 1 of 1

SAMPLE DESCRIPTION	MATRIX	SAMPLED BY	SAMPLED DATE RECEIVED		
QC SPIKE	Free Product/ Liquid				
CONSTITUENT	*PQL mg/Kg	SPIKE AMOUNT	RESULT mg/Kg	%REC	NOTE
ORGANOCHLORINE PESTICIDES AND PCBs					
Aldrin	0.5	2.0	2.1	105.	1
gamma-BHC (Lindane)	0.5	2.0	2.0	100.	
4,4'-DDT	0.5	8.0	7.2	90.	
Dieldrin	0.5	8.0	7.5	94.	
Endrin	0.5	8.0	7.9	99.	
Heptachlor	0.5	2.0	1.8	90.	

San Jose Lab Certifications: CAELAP #1204

\*RESULTS listed as 'ND' were not detected at or above the listed PQL (Practical Quantitation Limit)

(1) Sample Preparation on 11/12/93 by WP

11/19/93  
ECD1-N128015  
DT/mcc/ttn  
JJ2402-18

Respectfully submitted,  
COAST-TO-COAST ANALYTICAL SERVICES, INC.

*Dudley Torres*  
Dudley Torres  
Organics Manager



Air, Water & Hazardous Waste Sampling, Analysis & Consultation  
Certified Hazardous Waste, Chemistry, Bacteriology & Bioassay Laboratories

San Luis Obispo, CA • Benicia, CA • Camarillo, CA • San Jose, CA • Goleta, CA  
Anaheim, CA • Tempe, AZ • Valparaiso, IN • Westbrook, ME • Indianapolis, IN

NorCal Division (San Jose Laboratory)  
2059 Junction Ave.

San Jose, CA 95131  
(408) 955-9077

QC Batch ID: PEST111293

CLIENT: Coast-to-Coast Analytical Services, Inc.

Analyzed : 11/14/93  
Analyzed by: TN  
Method : EPA 8080

QC SPIKE  
REPORT OF ANALYTICAL RESULTS

Page 1 of 1

SAMPLE DESCRIPTION                      MATRIX                      SAMPLED BY                      SAMPLED DATE RECEIVED

QC SPIKE DUPLICATE                      Free Product/  
Liquid

CONSTITUENT	*PQL mg/Kg	SPIKE AMOUNT	RESULT mg/Kg	%REC	%DIFF	NOTE
ORGANOCHLORINE PESTICIDES AND PCBs						1
Aldrin	0.5	2.0	2.1	105.	0.	
gamma-BHC (Lindane)	0.5	2.0	2.0	100.	0.	
4,4'-DDT	0.5	8.0	6.6	83.	8.7	
Dieldrin	0.5	8.0	7.8	98.	3.9	
Endrin	0.5	8.0	7.9	99.	0.	
Heptachlor	0.5	2.0	1.8	90.	0.	

San Jose Lab Certifications: CAELAP #1204

\*RESULTS listed as 'ND' were not detected at or above the listed PQL (Practical Quantitation Limit)

(1) Sample Preparation on 11/12/93 by WP

11/19/93  
ECD1-N12B016  
DT/mcc/ttn  
JJ2402-18

Respectfully submitted,  
COAST-TO-COAST ANALYTICAL SERVICES, INC.

*Dudley Torres*  
Dudley Torres  
Organics Manager





Air, Water & Hazardous Waste Sampling, Analysis & Consultation  
 Certified Hazardous Waste, Chemistry, Bacteriology & Bioassay Laboratories

San Luis Obispo, CA • Benicia, CA • Camarillo, CA • San Jose, CA • Goleta, CA  
 Anaheim, CA • Tempe, AZ • Valparaiso, IN • Westbrook, ME • Indianapolis, IN

NorCal Division (San Jose Laboratory)  
 2059 Junction Ave.

San Jose, CA 95131  
 (408) 955-9077

CLIENT: John Skalbeck  
 PES Environmental Inc  
 1682 Novato Boulevard, Suite 100  
 Novato, CA 94947

Lab Number : JJ-2402-17  
 Project : 241.0102.002, Powell St.  
 Plaza  
 Analyzed : 11/16/93  
 Analyzed by: MM  
 Method : EPA 8240

REPORT OF ANALYTICAL RESULTS

SAMPLE DESCRIPTION	MATRIX	SAMPLED BY	SAMPLED DATE RECEIVED	
93450017	Free Product/ Liquid	Bryan Smith	11/10/93	11/10/93

CONSTITUENT	(CAS RN)	*PQL mg/Kg	RESULT mg/Kg	NOTE
VOLATILE ORGANIC COMPOUNDS plus TOTAL PETROLEUM				1
HYDROCARBONS				
Acetone	(67641)	1000.	ND	
Benzene	(71432)	50.	ND	
Bromodichloromethane	(75274)	50.	ND	
Bromoform	(75252)	50.	ND	
Bromomethane	(74839)	50.	ND	
2-Butanone (MEK)	(78933)	500.	ND	
Carbon Disulfide	(75150)	100.	ND	
Carbon Tetrachloride	(56235)	50.	ND	
Chlorobenzene	(108907)	50.	ND	
Chloroethane	(75003)	50.	ND	
2-Chloroethyl Vinyl Ether	(110758)	500.	ND	
Chloroform	(67663)	100.	ND	
Chloromethane	(74873)	50.	ND	
Dibromochloromethane	(124481)	50.	ND	
1,2-Dichlorobenzene	(95501)	50.	ND	
1,3-Dichlorobenzene	(541731)	50.	ND	

San Jose Lab Certifications: CAELAP #1204

\*RESULTS listed as 'ND' were not detected at or above the listed PQL (Practical Quantitation Limit)  
 (1) EXTRACTED by EPA 5030 (purge-and-trap)

11/20/93  
 FIN2/111609B  
 DT/mcc  
 FIN2/111693



Air, Water & Hazardous Waste Sampling, Analysis & Consultation  
 Certified Hazardous Waste, Chemistry, Bacteriology & Bioassay Laboratories

San Luis Obispo, CA • Benicia, CA • Camarillo, CA • San Jose, CA • Goleta, CA  
 Anaheim, CA • Tempe, AZ • Valparaiso, IN • Westbrook, ME • Indianapolis, IN

NorCal Division (San Jose Laboratory)  
 2059 Junction Ave.

San Jose, CA 95131  
 (408) 955-9077

CLIENT: John Skalbeck  
 PES Environmental Inc  
 1682 Novato Boulevard, Suite 100  
 Novato, CA 94947

Lab Number : JJ-2402-17  
 Project : 241.0102.002, Powell St.  
 Plaza  
 Analyzed : 11/16/93  
 Analyzed by: MM  
 Method : EPA 8240

REPORT OF ANALYTICAL RESULTS

Page 2 of 3

SAMPLE DESCRIPTION	MATRIX	SAMPLED BY	SAMPLED DATE RECEIVED	
93450017	Free Product/ Liquid	Bryan Smith	11/10/93	11/10/93
CONSTITUENT	(CAS RN)	*PQL mg/Kg	RESULT mg/Kg	NOTE
1,4-Dichlorobenzene	(106467)	50.	ND	
1,1-Dichloroethane	(75343)	50.	ND	
1,2-Dichloroethane	(107062)	50.	ND	
1,1-Dichloroethene	(75354)	50.	ND	
cis-1,2-Dichloroethene	(156592)	50.	ND	
trans-1,2-Dichloroethene	(156605)	50.	ND	
1,2-Dichloropropane	(78875)	50.	ND	
cis-1,3-Dichloropropene	(100610105)	50.	ND	
trans-1,3-Dichloropropene	(10061026)	50.	ND	
Ethylbenzene	(100414)	50.	ND	
2-Hexanone	(591786)	300.	ND	
Methyl Isobutyl Ketone (MIBK)	(108101)	300.	1100.	
Methylene Chloride	(75092)	300.	ND	
Styrene	(100425)	50.	ND	
1,1,2,2-Tetrachloroethane	(79345)	200.	ND	
Tetrachloroethene	(127184)	50.	ND	
Toluene	(108883)	50.	ND	
1,1,1-Trichloroethane	(71556)	50.	ND	
1,1,2-Trichloroethane	(79005)	50.	ND	

San Jose Lab Certifications: CAELAP #1204

\*RESULTS listed as 'ND' were not detected at or above the listed PQL (Practical Quantitation Limit)

11/20/93  
 FIN2/111609B  
 DT/mcc  
 FIN2/111693



Air, Water & Hazardous Waste Sampling, Analysis & Consultation  
Certified Hazardous Waste, Chemistry, Bacteriology & Bioassay Laboratories

San Luis Obispo, CA • Benicia, CA • Camarillo, CA • San Jose, CA • Goleta, CA  
Anaheim, CA • Tempe, AZ • Valparaiso, IN • Westbrook, ME • Indianapolis, IN

NorCal Division (San Jose Laboratory)  
2059 Junction Ave.

San Jose, CA 95131  
(408) 955-9077

CLIENT: John Skalbeck  
PES Environmental Inc  
1682 Novato Boulevard, Suite 100  
Novato, CA 94947

Lab Number : JJ-2402-17  
Project : 241.0102.002, Powell St.  
Plaza  
Analyzed : 11/16/93  
Analyzed by: MM  
Method : EPA 8240

REPORT OF ANALYTICAL RESULTS

SAMPLE DESCRIPTION	MATRIX	SAMPLED BY	SAMPLED DATE RECEIVED	
93450017	Free Product/ Liquid	Bryan Smith	11/10/93	11/10/93

CONSTITUENT	(CAS RN)	*PQL mg/Kg	RESULT mg/Kg	NOTE
Trichloroethene	(79016)	50.	ND	
Trichlorofluoromethane	(75694)	50.	ND	
Trichlorotrifluoroethane	(76131)	50.	ND	
Vinyl Acetate	(108054)	300.	ND	
Vinyl Chloride	(75014)	50.	ND	
Xylenes (total)	(1330207)	50.	ND	
Total Petroleum Hydrocarbons (Gasoline)		50000.	ND	
Total Petroleum Hydrocarbons (Diesel)		50000.	630000.	
D4-DCA (% Surrogate recovery #1)			84.	
D8-TOL (% Surrogate Recovery #2)			115.	
BFB (% Surrogate Recovery #3)			87.	

San Jose Lab Certifications: CAELAP #1204

\*RESULTS listed as 'ND' were not detected at or above the listed PQL (Practical Quantitation Limit)

11/20/93  
FIN2/111609B  
DT/mcc  
FIN2/111693

Respectfully submitted,  
COAST-TO-COAST ANALYTICAL SERVICES, INC.

*Dudley Torres*  
Dudley Torres  
Organics Manager



Air, Water & Hazardous Waste Sampling, Analysis & Consultation  
 Certified Hazardous Waste, Chemistry, Bacteriology & Bioassay Laboratories

San Luis Obispo, CA • Benicia, CA • Camarillo, CA • San Jose, CA • Goleta, CA  
 Anaheim, CA • Tempe, AZ • Valparaiso, IN • Westbrook, ME • Indianapolis, IN

NorCal Division (San Jose Laboratory)  
 2059 Junction Ave.

San Jose, CA 95131  
 (408) 955-9077

CLIENT: John Skalbeck  
 PES Environmental Inc  
 1682 Novato Boulevard, Suite 100  
 Novato, CA 94947

Lab Number : JJ-2402-18  
 Project : 241.0102.002, Powell St.  
 Plaza  
 Analyzed : 11/16/93  
 Analyzed by: MM  
 Method : EPA 8240

REPORT OF ANALYTICAL RESULTS

SAMPLE DESCRIPTION	MATRIX	SAMPLED BY	SAMPLED DATE RECEIVED	
93450020	Free Product/ Liquid	Bryan Smith	11/10/93	11/10/93

CONSTITUENT	(CAS RN)	*PQL mg/Kg	RESULT mg/Kg	NOTE
VOLATILE ORGANIC COMPOUNDS plus TOTAL PETROLEUM				1
HYDROCARBONS				
Acetone	(67641)	1000.	ND	
Benzene	(71432)	50.	ND	
Bromodichloromethane	(75274)	50.	ND	
Bromoform	(75252)	50.	ND	
Bromomethane	(74839)	50.	ND	
2-Butanone (MEK)	(78933)	500.	ND	
Carbon Disulfide	(75150)	100.	ND	
Carbon Tetrachloride	(56235)	50.	ND	
Chlorobenzene	(108907)	50.	ND	
Chloroethane	(75003)	50.	ND	
2-Chloroethyl Vinyl Ether	(110758)	500.	ND	
Chloroform	(67663)	100.	ND	
Chloromethane	(74873)	50.	ND	
Dibromochloromethane	(124481)	50.	ND	
1,2-Dichlorobenzene	(95501)	50.	ND	
1,3-Dichlorobenzene	(541731)	50.	ND	

San Jose Lab Certifications: CAELAP #1204

\*RESULTS listed as 'ND' were not detected at or above the listed PQL (Practical Quantitation Limit)  
 (1) EXTRACTED by EPA 5030 (purge-and-trap)

11/20/93  
 FIN2/111617B  
 DT/mcc  
 FIN2/111693



Air, Water & Hazardous Waste Sampling, Analysis & Consultation  
Certified Hazardous Waste, Chemistry, Bacteriology & Bioassay Laboratories

San Luis Obispo, CA • Benicia, CA • Camarillo, CA • San Jose, CA • Goleta, CA  
Anaheim, CA • Tempe, AZ • Valparaiso, IN • Westbrook, ME • Indianapolis, IN

NorCal Division (San Jose Laboratory)  
2059 Junction Ave.

San Jose, CA 95131  
(408) 955-9077

CLIENT: John Skalbeck  
PES Environmental Inc  
1682 Novato Boulevard, Suite 100  
Novato, CA 94947

Lab Number : JJ-2402-18  
Project : 241.0102.002, Powell St.  
Plaza  
Analyzed : 11/16/93  
Analyzed by: MM  
Method : EPA 8240

REPORT OF ANALYTICAL RESULTS

Page 2 of 3

SAMPLE DESCRIPTION	MATRIX	SAMPLED BY	SAMPLED DATE RECEIVED	
93450020	Free Product/ Liquid	Bryan Smith	11/10/93	11/10/93
CONSTITUENT	(CAS RN)	*PQL mg/Kg	RESULT mg/Kg	NOTE
1,4-Dichlorobenzene	(106467)	50.	ND	
1,1-Dichloroethane	(75343)	50.	ND	
1,2-Dichloroethane	(107062)	50.	ND	
1,1-Dichloroethene	(75354)	50.	ND	
cis-1,2-Dichloroethene	(156592)	50.	ND	
trans-1,2-Dichloroethene	(156605)	50.	ND	
1,2-Dichloropropane	(78875)	50.	ND	
cis-1,3-Dichloropropene	(100610105)	50.	ND	
trans-1,3-Dichloropropene	(10061026)	50.	ND	
Ethylbenzene	(100414)	50.	ND	
2-Hexanone	(591786)	300.	ND	
Methyl Isobutyl Ketone (MIBK)	(108101)	300.	ND	
Methylene Chloride	(75092)	300.	ND	
Styrene	(100425)	50.	ND	
1,1,2,2-Tetrachloroethane	(79345)	200.	ND	
Tetrachloroethene	(127184)	50.	ND	
Toluene	(108883)	50.	ND	
1,1,1-Trichloroethane	(71556)	50.	ND	
1,1,2-Trichloroethane	(79005)	50.	ND	

San Jose Lab Certifications: CAELAP #1204

\*RESULTS listed as 'ND' were not detected at or above the listed PQL (Practical Quantitation Limit)

11/20/93  
FIN2/111617B  
DT/mcc  
FIN2/111693



Air, Water & Hazardous Waste Sampling, Analysis & Consultation  
Certified Hazardous Waste, Chemistry, Bacteriology & Bioassay Laboratories

San Luis Obispo, CA • Benicia, CA • Camarillo, CA • San Jose, CA • Goleta, CA  
Anaheim, CA • Tempe, AZ • Valparaiso, IN • Westbrook, ME • Indianapolis, IN

NorCal Division (San Jose Laboratory)  
2059 Junction Ave.

San Jose, CA 95131  
(408) 955-9077

CLIENT: John Skalbeck  
PES Environmental Inc  
1682 Novato Boulevard, Suite 100  
Novato, CA 94947

Lab Number : JJ-2402-18  
Project : 241.0102.002, Powell St.  
Plaza  
Analyzed : 11/16/93  
Analyzed by: MM  
Method : EPA 8240

REPORT OF ANALYTICAL RESULTS

Page 3 of 3

SAMPLE DESCRIPTION	MATRIX	SAMPLED BY	SAMPLED DATE RECEIVED	
93450020	Free Product/ Liquid	Bryan Smith	11/10/93	11/10/93
CONSTITUENT	(CAS RN)	*PQL mg/Kg	RESULT mg/Kg	NOTE
Trichloroethene	(79016)	50.	ND	
Trichlorofluoromethane	(75694)	50.	ND	
Trichlorotrifluoroethane	(76131)	50.	ND	
Vinyl Acetate	(108054)	300.	ND	
Vinyl Chloride	(75014)	50.	ND	
Xylenes (total)	(1330207)	50.	ND	
Total Petroleum Hydrocarbons (Gasoline)		50000.	ND	
Total Petroleum Hydrocarbons (Diesel)		50000.	760000.	
D4-DCA (% Surrogate recovery #1)			82.	
D8-TOL (% Surrogate Recovery #2)			104.	
BFB (% Surrogate Recovery #3)			94.	

San Jose Lab Certifications: CAELAP #1204

\*RESULTS listed as 'ND' were not detected at or above the listed PQL (Practical Quantitation Limit)

11/20/93  
FIN2/111617B  
DT/mcc  
FIN2/111693

Respectfully submitted,  
COAST-TO-COAST ANALYTICAL SERVICES, INC.

*M. Torres*  
Dudley Torres  
Organics Manager



Air, Water & Hazardous Waste Sampling, Analysis & Consultation  
Certified Hazardous Waste, Chemistry, Bacteriology & Bioassay Laboratories

San Luis Obispo, CA • Benicia, CA • Camarillo, CA • San Jose, CA • Goleta, CA  
Anaheim, CA • Tempe, AZ • Valparaiso, IN • Westbrook, ME • Indianapolis, IN

NorCal Division (San Jose Laboratory)  
2059 Junction Ave.

San Jose, CA 95131  
(408) 955-9077

CLIENT: John Skalbeck  
PES Environmental Inc  
1682 Novato Boulevard, Suite 100  
Novato, CA 94947

Lab Number : JJ-2402-17  
Project : 241.0102.002, Powell St.  
Plaza

REPORT OF ANALYTICAL RESULTS

Page 1 of 1

SAMPLE DESCRIPTION	MATRIX	SAMPLED BY	SAMPLED DATE RECEIVED				
93450017	Free Product/ Liquid	Bryan Smith	11/10/93	11/10/93			
CONSTITUENT	*PQL	RESULT	UNITS	METHOD	ANALYZED	BY	NOTES
Antimony, Total	0.5	0.6	mg/Kg	EPA 7041	11/24/93	KP	1
Arsenic, Total	0.5	1.8	mg/Kg	EPA 7060	11/24/93	KP	1
Barium, Total	5.	ND	mg/Kg	EPA 6010	11/21/93	DO	1
Beryllium, Total	0.5	ND	mg/Kg	EPA 6010	11/21/93	DO	1
Cadmium, Total	0.5	ND	mg/Kg	EPA 6010	11/21/93	DO	1
Chromium, Total	0.5	0.8	mg/Kg	EPA 6010	11/21/93	DO	1
Cobalt, Total	1.	ND	mg/Kg	EPA 6010	11/21/93	DO	1
Copper, Total	0.5	61.	mg/Kg	EPA 6010	11/21/93	DO	1
Lead, Total	1.	39.	mg/Kg	EPA 7420	11/23/93	NT	1
Mercury, Total	0.004	ND	mg/Kg	EPA 7471	11/30/93	DO	
Molybdenum, Total	3.	ND	mg/Kg	EPA 6010	11/21/93	DO	1
Nickel, Total	1.	7.	mg/Kg	EPA 6010	11/21/93	DO	1
Selenium, Total	0.5	ND	mg/Kg	EPA 7740	11/24/93	KP	1
Silver, Total	0.2	ND	mg/Kg	EPA 7760	11/23/93	NT	1
Thallium, Total	5.	ND	mg/Kg	EPA 7840	11/23/93	NT	1
Vanadium, Total	2.	5.	mg/Kg	EPA 6010	11/21/93	DO	1
Zinc, Total	1.	3.	mg/Kg	EPA 6010	11/21/93	DO	1
Oil and Grease, Non-Polar	50.	710000.	mg/Kg	SM5520E&F	11/24/93	CL	

San Jose Lab Certifications: CAELAP #1204

\*RESULTS listed as 'ND' were not detected at or above the listed PQL (Practical Quantitation Limit)

(1) Sample Preparation on 11/20/93 by AL using EPA 3050

12/02/93

NG/sab  
5093112001

Respectfully submitted,  
COAST-TO-COAST ANALYTICAL SERVICES, INC.

*Nick J. Gaone*  
Nick Gaone  
Inorganics Manager

**COAST - TO -  
COAST  
ANALYTICAL  
SERVICES**

Air, Water & Hazardous Waste Sampling, Analysis & Consultation  
Certified Hazardous Waste, Chemistry, Bacteriology & Bioassay Laboratories

San Luis Obispo, CA • Benicia, CA • Camarillo, CA • San Jose, CA • Goleta, CA  
Anaheim, CA • Tempe, AZ • Valparaiso, IN • Westbrook, ME • Indianapolis, IN

NorCal Division (San Jose Laboratory)  
2059 Junction Ave.

San Jose, CA 95131  
(408) 955-9077

CLIENT: John Skalbeck  
PES Environmental Inc  
1682 Novato Boulevard, Suite 100  
Novato, CA 94947

Lab Number : JJ-2402-18  
Project : 241.0102.002, Powell St.  
Plaza

REPORT OF ANALYTICAL RESULTS

Page 1 of 1

SAMPLE DESCRIPTION	MATRIX	SAMPLED BY		SAMPLED DATE RECEIVED			
93450020	Free Product/ Liquid	Bryan Smith		11/10/93	11/10/93		
CONSTITUENT	*PQL	RESULT	UNITS	METHOD	ANALYZED	BY	NOTES
Antimony, Total	0.5	ND	mg/Kg	EPA 7041	11/24/93	KP	1
Arsenic, Total	0.5	1.3	mg/Kg	EPA 7060	11/24/93	KP	1
Barium, Total	5.	ND	mg/Kg	EPA 6010	11/21/93	DO	1
Beryllium, Total	0.5	ND	mg/Kg	EPA 6010	11/21/93	DO	1
Cadmium, Total	0.5	ND	mg/Kg	EPA 6010	11/21/93	DO	1
Chromium, Total	0.5	0.6	mg/Kg	EPA 6010	11/21/93	DO	1
Cobalt, Total	1.	ND	mg/Kg	EPA 6010	11/21/93	DO	1
Copper, Total	0.5	5.7	mg/Kg	EPA 6010	11/21/93	DO	1
Lead, Total	1.	15.	mg/Kg	EPA 7420	11/23/93	NT	1
Mercury, Total	0.004	ND	mg/Kg	EPA 7471	11/30/93	DO	
Molybdenum, Total	3.	ND	mg/Kg	EPA 6010	11/21/93	DO	1
Nickel, Total	1.	4.	mg/Kg	EPA 6010	11/21/93	DO	1
Selenium, Total	0.5	ND	mg/Kg	EPA 7740	11/24/93	KP	1
Silver, Total	0.2	0.5	mg/Kg	EPA 7760	11/23/93	NT	1
Thallium, Total	5.	ND	mg/Kg	EPA 7840	11/23/93	KP	1
Vanadium, Total	2.	5.	mg/Kg	EPA 6010	11/21/93	DO	1
Zinc, Total	1.	1.	mg/Kg	EPA 6010	11/21/93	DO	1
Oil and Grease, Non-Polar	50.	770000.	mg/Kg	SM5520E&F	11/24/93	CL	

San Jose Lab Certifications: CAELAP #1204

\*RESULTS listed as 'ND' were not detected at or above the listed PQL (Practical Quantitation Limit)  
(1) Sample Preparation on 11/20/93 by AL using EPA 3050

12/02/93

NG/sab  
5093112001

Respectfully submitted,  
COAST-TO-COAST ANALYTICAL SERVICES, INC.

*Nick J. Gaone*  
Nick Gaone  
Inorganics Manager





Air, Water & Hazardous Waste Sampling, Analysis & Consultation  
 Certified Hazardous Waste, Chemistry, Bacteriology & Bioassay Laboratories

San Luis Obispo, CA • Benicia, CA • Camarillo, CA • San Jose, CA • Goleta, CA  
 Anaheim, CA • Tempe, AZ • Valparaiso, IN • Westbrook, ME • Indianapolis, IN

NorCal Division (San Jose Laboratory)  
 2059 Junction Ave.

San Jose, CA 95131  
 (408) 955-9077

CLIENT: John Skalbeck  
 PES Environmental Inc  
 1682 Novato Boulevard, Suite 100  
 Novato, CA 94947

Lab Number : JJ2402  
 Project : 241.0102.002, Powell St.  
 Plaza

REPORT OF ANALYTICAL RESULTS

Page 1 of 1

SAMPLE ID	SAMPLE DESCRIPTION	MATRIX	SAMPLED BY	SAMPLED DATE	RECEIVED
JJ2402-17	93450017	Free Product/ Liquid	Bryan Smith	11/10/93	11/10/93
JJ2402-18	93450020	Free Product/ Liquid	Bryan Smith	11/10/93	11/10/93

CONSTITUENT	UNITS	*PQL	JJ2402-217	JJ2402-218
Lead, Organic	mg/Kg	1.	ND	ND
Method:			HML#338	HML#338
Analyzed by:			NG	NG
Analyzed on:			12/05/93	12/05/93
Notes:			1	1

San Jose Lab Certifications: CAELAP #1204

\*RESULTS of 'ND' not detected at or above the listed PQL times Dilution Factor.

(1) Sample Preparation on 11/19/93 by AL

12/06/93

NG/nfg  
 PBO93111901

Respectfully submitted,  
 COAST-TO-COAST ANALYTICAL SERVICES, INC.

*Nick J. Gaone*

Nick Gaone  
 Inorganics Manager



Air, Water & Hazardous Waste Sampling, Analysis & Consultation  
Certified Hazardous Waste, Chemistry, Bacteriology & Bioassay Laboratories

San Luis Obispo, CA • Benicia, CA • Camarillo, CA • San Jose, CA • Goleta, CA  
Anaheim, CA • Tempe, AZ • Valparaiso, IN • Westbrook, ME • Indianapolis, IN

NorCal Division (San Jose Laboratory)  
2059 Junction Ave.

San Jose, CA 95131  
(408) 955-9077

QC Batch ID: PBO93111901

CLIENT: Coast-to-Coast Analytical Services, Inc.

METHOD BLANK  
REPORT OF ANALYTICAL RESULTS

Page 1 of 1

SAMPLE DESCRIPTION	MATRIX	SAMPLED BY	SAMPLED DATE RECEIVED			
METHOD BLANK	Free Product/ Liquid					
CONSTITUENT	*PQL	RESULT	UNITS	METHOD	ANALYZED	BY NOTE
Lead, Organic	1.	ND	mg/Kg	HML#338	12/05/93	NG 1

San Jose Lab Certifications: CAELAP #1204

\*RESULTS listed as 'ND' were not detected at or above the listed PQL (Practical Quantitation Limit)

(1) Sample Preparation on 11/19/93 by AL

12/06/93

NG/nfg  
JJ2402-18

Respectfully submitted,  
COAST-TO-COAST ANALYTICAL SERVICES, INC.

Nick Gaone  
Inorganics Manager



Air, Water & Hazardous Waste Sampling, Analysis & Consultation  
Certified Hazardous Waste, Chemistry, Bacteriology & Bioassay Laboratories

San Luis Obispo, CA • Benicia, CA • Camarillo, CA • San Jose, CA • Goleta, CA  
Anaheim, CA • Tempe, AZ • Valparaiso, IN • Westbrook, ME • Indianapolis, IN

NorCal Division (San Jose Laboratory)  
2059 Junction Ave.

San Jose, CA 95131  
(408) 955-9077

QC Batch ID: PBO93111901

CLIENT: Coast-to-Coast Analytical Services, Inc.

QC SPIKE  
REPORT OF ANALYTICAL RESULTS

Page 1 of 1

SAMPLE DESCRIPTION	MATRIX	SAMPLED BY		SAMPLED DATE RECEIVED					
QC SPIKE	Free Product/ Liquid								
CONSTITUENT	*PQL	SPIKE	RESULT	%REC	UNITS	METHOD	ANALYZED	BY	NOTE
Lead, Organic	1.	25.	25.	100.	mg/Kg	HML#338	12/05/93	NG	1

San Jose Lab Certifications: CAELAP #1204

\*RESULTS listed as 'ND' were not detected at or above the listed PQL (Practical Quantitation Limit)  
(1) Sample Preparation on 11/19/93 by AL

12/06/93

NG/nfg  
JJ2402-18

Respectfully submitted,  
COAST-TO-COAST ANALYTICAL SERVICES, INC.

Nick Gaone  
Inorganics Manager



Air, Water & Hazardous Waste Sampling, Analysis & Consultation  
Certified Hazardous Waste, Chemistry, Bacteriology & Bioassay Laboratories

San Luis Obispo, CA • Benicia, CA • Camarillo, CA • San Jose, CA • Goleta, CA  
Anaheim, CA • Tempe, AZ • Valparaiso, IN • Westbrook, ME • Indianapolis, IN

NorCal Division (San Jose Laboratory)  
2059 Junction Ave.

San Jose, CA 95131  
(408) 955-9077

QC Batch ID: PBO93111901

CLIENT: Coast-to-Coast Analytical Services, Inc.

QC SPIKE  
REPORT OF ANALYTICAL RESULTS

Page 1 of 1

SAMPLE DESCRIPTION	MATRIX	SAMPLED BY	SAMPLED DATE RECEIVED						
QC SPIKE DUPLICATE	Free Product/ Liquid								
CONSTITUENT	*PQL	SPIKE	RESULT	%DIFF	UNITS	METHOD	ANALYZED	BY	NOTE
Lead, Organic	1.	25.	25.	0.	mg/Kg	HML#338	12/05/93	NG	1

San Jose Lab Certifications: CAELAP #1204

\*RESULTS listed as 'ND' were not detected at or above the listed PQL (Practical Quantitation Limit)

(1) Sample Preparation on 11/19/93 by AL

12/06/93

NG/nfg  
JJ2402-18

Respectfully submitted,  
COAST-TO-COAST ANALYTICAL SERVICES, INC.

Nick Gaone  
Inorganics Manager



Air, Water & Hazardous Waste Sampling, Analysis & Consultation  
 Certified Hazardous Waste, Chemistry, Bacteriology & Bioassay Laboratories

San Luis Obispo, CA • Benicia, CA • Camarillo, CA • San Jose, CA • Goleta, CA  
 Anaheim, CA • Tempe, AZ • Valparaiso, IN • Westbrook, ME • Indianapolis, IN

NorCal Division (San Jose Laboratory)  
 2059 Junction Ave.

San Jose, CA 95131  
 (408) 955-9077

CLIENT: John Skalbeck  
 PES Environmental Inc  
 1682 Novato Boulevard, Suite 100  
 Novato, CA 94947

Lab Number : JJ-2402-17  
 Project : 241.0102.002, Powell St.  
 Plaza  
 Analyzed : 11/22/93  
 Analyzed by: DT  
 Method : EPA 8270

REPORT OF ANALYTICAL RESULTS

Page 1 of 4

SAMPLE DESCRIPTION	MATRIX	SAMPLED BY	SAMPLED DATE RECEIVED	
93450017	Free Product/ Liquid	Bryan Smith	11/10/93	11/10/93
CONSTITUENT	(CAS RN)	*PQL mg/KG	RESULT mg/KG	NOTE
<b>SEMIVOLATILE ORGANIC COMPOUNDS</b>				
Acenaphthylene	(208968)	2000.	ND	
Acenaphthene	(83329)	2000.	ND	
Anthracene	(120127)	2000.	ND	
Benzidine	(92875)	20000.	ND	
Benzo(a)anthracene	(56553)	2000.	ND	
Benzo(b)fluoranthene	(205992)	2000.	ND	
Benzo(k)fluoranthene	(207089)	2000.	ND	
Benzo(a)pyrene	(50328)	2000.	ND	
Benzo(ghi)perylene	(191242)	2000.	ND	
Bis(2-chloroethoxy)methane	(111911)	2000.	ND	
Bis(2-chloroethyl)ether	(111444)	2000.	ND	
Bis(2-chloroisopropyl)ether	(39638329)	2000.	ND	
Bis(2-ethylhexyl)phthalate	(117817)	3000.	ND	
4-Bromophenylphenylether	(101553)	2000.	ND	
Butylbenzylphthalate	(85687)	2000.	ND	
2-Chloronaphthalene	(91587)	2000.	ND	
4-Chlorophenylphenylether	(7005723)	2000.	ND	
Chrysene	(218019)	2000.	ND	

San Jose Lab Certifications: CAELAP #1204

\*RESULTS listed as 'ND' were not detected at or above the listed PQL (Practical Quantitation Limit)

12/03/93  
 FIN3/JJ240217  
 DT/et  
 BNA-111593

NorCal Division (San Jose Laboratory)  
2059 Junction Ave.

San Jose, CA 95131  
(408) 955-9077

CLIENT: John Skalbeck  
PES Environmental Inc  
1682 Novato Boulevard, Suite 100  
Novato, CA 94947

Lab Number : JJ-2402-17  
Project : 241.0102.002, Powell St.  
Plaza  
Analyzed : 11/22/93  
Analyzed by: DT  
Method : EPA 8270

REPORT OF ANALYTICAL RESULTS

Page 2 of 4

SAMPLE DESCRIPTION	MATRIX	SAMPLED BY	SAMPLED DATE RECEIVED	
93450017	Free Product/ Liquid	Bryan Smith	11/10/93	11/10/93
CONSTITUENT	(CAS RN)	*PQL mg/KG	RESULT mg/KG	NOTE
Dibenzo(a,h)anthracene	(53703)	2000.	ND	
Di-n-butylphthalate	(84742)	2000.	ND	
1,2-Dichlorobenzene	(95501)	2000.	ND	
1,3-Dichlorobenzene	(541731)	2000.	ND	
1,4-Dichlorobenzene	(106467)	2000.	ND	
3,3-Dichlorobenzidine	(91941)	20000.	ND	
Diethylphthalate	(84662)	2000.	ND	
Dimethylphthalate	(131113)	2000.	ND	
2,4-Dinitrotoluene	(121142)	2000.	ND	
2,6-Dinitrotoluene	(606202)	2000.	ND	
Di-n-octylphthalate	(117840)	2000.	ND	
Fluoranthene	(206440)	2000.	ND	
Fluorene	(86737)	2000.	ND	
Hexachlorobenzene	(118741)	2000.	ND	
Hexachlorobutadiene	(87683)	2000.	ND	
Hexachlorocyclopentadiene	(77474)	2000.	ND	
Hexachloroethane	(67721)	2000.	ND	
Indeno(1,2,3-cd)pyrene	(193395)	2000.	ND	
Isophorone	(78591)	2000.	ND	

San Jose Lab Certifications: CAELAP #1204

\*RESULTS listed as 'ND' were not detected at or above the listed PQL (Practical Quantitation Limit)

12/03/93  
FIN3/JJ240217  
DT/et  
BNA-111593



Air, Water & Hazardous Waste Sampling, Analysis & Consultation  
 Certified Hazardous Waste, Chemistry, Bacteriology & Bioassay Laboratories

San Luis Obispo, CA • Benicia, CA • Camarillo, CA • San Jose, CA • Goleta, CA  
 Anaheim, CA • Tempe, AZ • Valparaiso, IN • Westbrook, ME • Indianapolis, IN

NorCal Division (San Jose Laboratory)  
 2059 Junction Ave.

San Jose, CA 95131  
 (408) 955-9077

CLIENT: John Skalbeck  
 PES Environmental Inc  
 1682 Novato Boulevard, Suite 100  
 Novato, CA 94947

Lab Number : JJ-2402-17  
 Project : 241.0102.002, Powell St.  
 Plaza  
 Analyzed : 11/22/93  
 Analyzed by: DT  
 Method : EPA 8270

REPORT OF ANALYTICAL RESULTS

Page 3 of 4

SAMPLE DESCRIPTION	MATRIX	SAMPLED BY	SAMPLED DATE RECEIVED	
93450017	Free Product/ Liquid	Bryan Smith	11/10/93	11/10/93

CONSTITUENT	(CAS RN)	*PQL mg/KG	RESULT mg/KG	NOTE
Methylnaphthalenes	(91576)	2000.	ND	
Naphthalene	(91203)	2000.	ND	
Nitrobenzene	(98953)	2000.	ND	
N-Nitrosodimethylamine	(62759)	2000.	ND	
N-Nitrosodiphenylamine	(86306)	2000.	ND	
N-Nitrosodi-n-propylamine	(621647)	2000.	ND	
Phenanthrene	(85018)	2000.	ND	
Pyrene	(129000)	2000.	ND	
Trichlorobenzene	(108703)	2000.	ND	
4-Chloro-3-methylphenol	(59507)	6000.	ND	
2-Chlorophenol	(95578)	6000.	ND	
Cresols (total)		6000.	ND	
2,4-Dichlorophenol	(120832)	6000.	ND	
2,4-Dimethylphenol	(105679)	6000.	ND	
2,4-Dinitrophenol	(51285)	6000.	ND	
2-Methyl-4,6-dinitrophenol	(534521)	6000.	ND	
2-Nitrophenol	(88755)	6000.	ND	
4-Nitrophenol	(100027)	6000.	ND	
Pentachlorophenol	(87865)	6000.	ND	

San Jose Lab Certifications: CAELAP #1204

\*RESULTS listed as 'ND' were not detected at or above the listed PQL (Practical Quantitation Limit)

12/03/93  
 FIN3/JJ240217  
 DT/et  
 BNA-111593



Air, Water & Hazardous Waste Sampling, Analysis & Consultation  
Certified Hazardous Waste, Chemistry, Bacteriology & Bioassay Laboratories

San Luis Obispo, CA • Benicia, CA • Camarillo, CA • San Jose, CA • Goleta, CA  
Anaheim, CA • Tempe, AZ • Valparaiso, IN • Westbrook, ME • Indianapolis, IN

NorCal Division (San Jose Laboratory)  
2059 Junction Ave.

San Jose, CA 95131  
(408) 955-9077

CLIENT: John Skalbeck  
PES Environmental Inc  
1682 Novato Boulevard, Suite 100  
Novato, CA 94947

Lab Number : JJ-2402-17  
Project : 241.0102.002, Powell St.  
Plaza  
Analyzed : 11/22/93  
Analyzed by: DT  
Method : EPA 8270

REPORT OF ANALYTICAL RESULTS

Page 4 of 4

SAMPLE DESCRIPTION	MATRIX	SAMPLED BY	SAMPLED DATE RECEIVED	
93450017	Free Product/ Liquid	Bryan Smith	11/10/93	11/10/93

CONSTITUENT	(CAS RN)	*PQL mg/KG	RESULT mg/KG	NOTE
Phenol	(108952)	6000.	ND	
2,4,6-Trichlorophenol	(88062)	6000.	ND	
Phenol-d5 (Surrogate % Recovery)			85.	
2-Fluorophenol (Surrogate % Recovery)			110.	
2,4,6-Tribromophenol (Surrogate % Recovery)			85.	
Nitrobenzene-d5 (Surrogate % Recovery)			130.	
2-Fluorobiphenyl (Surrogate % Recovery)			130.	
4-Terphenyl-d14 (Surrogate % Recovery)			120.	
Total Petroleum Hydrocarbons (Diesel #2)		20000.	990000	

San Jose Lab Certifications: CAELAP #1204

\*RESULTS listed as 'ND' were not detected at or above the listed PQL (Practical Quantitation Limit)

12/03/93  
FIN3/JJ240217  
DT/et  
BNA-111593

Respectfully submitted,  
COAST-TO-COAST ANALYTICAL SERVICES, INC.

Dudley Torres  
Organics Manager





Air, Water & Hazardous Waste Sampling, Analysis & Consultation  
 Certified Hazardous Waste, Chemistry, Bacteriology & Bioassay Laboratories

San Luis Obispo, CA • Benicia, CA • Camarillo, CA • San Jose, CA • Goleta, CA  
 Anaheim, CA • Tempe, AZ • Valparaiso, IN • Westbrook, ME • Indianapolis, IN

NorCal Division (San Jose Laboratory)  
 2059 Junction Ave.

San Jose, CA 95131  
 (408) 955-9077

CLIENT: John Skalbeck  
 PES Environmental Inc  
 1682 Novato Boulevard, Suite 100  
 Novato, CA 94947

Lab Number : JJ-2402-18  
 Project : 241.0102.002, Powell St.  
 Plaza  
 Analyzed : 11/22/93  
 Analyzed by: DT  
 Method : EPA 8270

REPORT OF ANALYTICAL RESULTS

Page 1 of 4

SAMPLE DESCRIPTION	MATRIX	SAMPLED BY	SAMPLED DATE RECEIVED	
93450020	Free Product/ Liquid	Bryan Smith	11/10/93	11/10/93
CONSTITUENT	(CAS RN)	*PQL mg/KG	RESULT mg/KG	NOTE
<b>SEMIVOLATILE ORGANIC COMPOUNDS</b>				
Acenaphthylene	(208968)	2000.	ND	
Acenaphthene	(83329)	2000.	ND	
Anthracene	(120127)	2000.	ND	
Benzidine	(92875)	20000.	ND	
Benzo(a)anthracene	(56553)	2000.	ND	
Benzo(b)fluoranthene	(205992)	2000.	ND	
Benzo(k)fluoranthene	(207089)	2000.	ND	
Benzo(a)pyrene	(50328)	2000.	ND	
Benzo(ghi)perylene	(191242)	2000.	ND	
Bis(2-chloroethoxy)methane	(111911)	2000.	ND	
Bis(2-chloroethyl)ether	(111444)	2000.	ND	
Bis(2-chloroisopropyl)ether	(39638329)	2000.	ND	
Bis(2-ethylhexyl)phthalate	(117817)	3000.	ND	
4-Bromophenylphenylether	(101553)	2000.	ND	
Butylbenzylphthalate	(85687)	2000.	ND	
2-Chloronaphthalene	(91587)	2000.	ND	
4-Chlorophenylphenylether	(7005723)	2000.	ND	
Chrysene	(218019)	2000.	ND	

San Jose Lab Certifications: CAELAP #1204

\*RESULTS listed as 'ND' were not detected at or above the listed PQL (Practical Quantitation Limit)

12/03/93  
 FIN3/JJ240218  
 DT/et  
 BNA-111593

NorCal Division (San Jose Laboratory)  
2059 Junction Ave.

San Jose, CA 95131  
(408) 955-9077

CLIENT: John Skalbeck  
PES Environmental Inc  
1682 Novato Boulevard, Suite 100  
Novato, CA 94947

Lab Number : JJ-2402-18  
Project : 241.0102.002, Powell St.  
Plaza  
Analyzed : 11/22/93  
Analyzed by: DT  
Method : EPA 8270

REPORT OF ANALYTICAL RESULTS

Page 2 of 4

SAMPLE DESCRIPTION	MATRIX	SAMPLED BY	SAMPLED DATE RECEIVED	
93450020	Free Product/ Liquid	Bryan Smith	11/10/93	11/10/93
CONSTITUENT	(CAS RN)	*PQL mg/KG	RESULT mg/KG	NOTE
Dibenzo(a,h)anthracene	(53703)	2000.	ND	
Di-n-butylphthalate	(84742)	2000.	ND	
1,2-Dichlorobenzene	(95501)	2000.	ND	
1,3-Dichlorobenzene	(541731)	2000.	ND	
1,4-Dichlorobenzene	(106467)	2000.	ND	
3,3-Dichlorobenzidine	(91941)	20000.	ND	
Diethylphthalate	(84662)	2000.	ND	
Dimethylphthalate	(131113)	2000.	ND	
2,4-Dinitrotoluene	(121142)	2000.	ND	
2,6-Dinitrotoluene	(606202)	2000.	ND	
Di-n-octylphthalate	(117840)	2000.	ND	
Fluoranthene	(206440)	2000.	ND	
Fluorene	(86737)	2000.	ND	
Hexachlorobenzene	(118741)	2000.	ND	
Hexachlorobutadiene	(87683)	2000.	ND	
Hexachlorocyclopentadiene	(77474)	2000.	ND	
Hexachloroethane	(67721)	2000.	ND	
Indeno(1,2,3-cd)pyrene	(193395)	2000.	ND	
Isophorone	(78591)	2000.	ND	

San Jose Lab Certifications: CAELAP #1204

\*RESULTS listed as 'ND' were not detected at or above the listed PQL (Practical Quantitation Limit)

12/03/93  
FIN3/JJ240218  
DT/et  
BNA-111593



Air, Water & Hazardous Waste Sampling, Analysis & Consultation  
Certified Hazardous Waste, Chemistry, Bacteriology & Bioassay Laboratories

San Luis Obispo, CA • Benicia, CA • Camarillo, CA • San Jose, CA • Goleta, CA  
Anaheim, CA • Tempe, AZ • Valparaiso, IN • Westbrook, ME • Indianapolis, IN

NorCal Division (San Jose Laboratory)  
2059 Junction Ave.

San Jose, CA 95131  
(408) 955-9077

CLIENT: John Skalbeck  
PES Environmental Inc  
1682 Novato Boulevard, Suite 100  
Novato, CA 94947

Lab Number : JJ-2402-18  
Project : 241.0102.002, Powell St.  
Plaza  
Analyzed : 11/22/93  
Analyzed by: DT  
Method : EPA 8270

REPORT OF ANALYTICAL RESULTS

Page 3 of 4

SAMPLE DESCRIPTION	MATRIX	SAMPLED BY	SAMPLED DATE RECEIVED	
93450020	Free Product/ Liquid	Bryan Smith	11/10/93	11/10/93
CONSTITUENT	(CAS RN)	*PQL mg/KG	RESULT mg/KG	NOTE
Methylnaphthalenes	(91576)	2000.	ND	
Naphthalene	(91203)	2000.	ND	
Nitrobenzene	(98953)	2000.	ND	
N-Nitrosodimethylamine	(62759)	2000.	ND	
N-Nitrosodiphenylamine	(86306)	2000.	ND	
N-Nitrosodi-n-propylamine	(621647)	2000.	ND	
Phenanthrene	(85018)	2000.	ND	
Pyrene	(129000)	2000.	ND	
Trichlorobenzene	(108703)	2000.	ND	
4-Chloro-3-methylphenol	(59507)	6000.	ND	
2-Chlorophenol	(95578)	6000.	ND	
Cresols (total)		6000.	ND	
2,4-Dichlorophenol	(120832)	6000.	ND	
2,4-Dimethylphenol	(105679)	6000.	ND	
2,4-Dinitrophenol	(51285)	6000.	ND	
2-Methyl-4,6-dinitrophenol	(534521)	6000.	ND	
2-Nitrophenol	(88755)	6000.	ND	
4-Nitrophenol	(100027)	6000.	ND	
Pentachlorophenol	(87865)	6000.	ND	

San Jose Lab Certifications: CAELAP #1204

\*RESULTS listed as 'ND' were not detected at or above the listed PQL (Practical Quantitation Limit)

12/03/93  
FIN3/JJ240218  
DT/et  
EVA-111593



Air, Water & Hazardous Waste Sampling, Analysis & Consultation  
Certified Hazardous Waste, Chemistry, Bacteriology & Bioassay Laboratories

San Luis Obispo, CA • Benicia, CA • Camarillo, CA • San Jose, CA • Goleta, CA  
Anaheim, CA • Tempe, AZ • Valparaiso, IN • Westbrook, ME • Indianapolis, IN

NorCal Division (San Jose Laboratory)  
2059 Junction Ave.

San Jose, CA 95131  
(408) 955-9077

CLIENT: John Skalbeck  
PES Environmental Inc  
1682 Novato Boulevard, Suite 100  
Novato, CA 94947

Lab Number : JJ-2402-18  
Project : 241.0102.002, Powell St.  
Plaza  
Analyzed : 11/22/93  
Analyzed by: DT  
Method : EPA 8270

REPORT OF ANALYTICAL RESULTS

Page 4 of 4

SAMPLE DESCRIPTION	MATRIX	SAMPLED BY	SAMPLED DATE RECEIVED	
93450020	Free Product/ Liquid	Bryan Smith	11/10/93	11/10/93

CONSTITUENT	(CAS RN)	*PQL mg/KG	RESULT mg/KG	NOTE
Phenol	(108952)	6000.	ND	
2,4,6-Trichlorophenol	(88062)	6000.	ND	
Phenol-d5 (Surrogate % Recovery)			95.	
2-Fluorophenol (Surrogate % Recovery)			110.	
2,4,6-Tribromophenol (Surrogate % Recovery)			70.	
Nitrobenzene-d5 (Surrogate % Recovery)			130.	
2-Fluorobiphenyl (Surrogate % Recovery)			110.	
4-Terphenyl-d14 (Surrogate % Recovery)			110.	

San Jose Lab Certifications: CAELAP #1204

\*RESULTS listed as 'ND' were not detected at or above the listed PQL (Practical Quantitation Limit)

12/03/93  
FIN3/JJ240218  
DT/et  
BNA-111593

Respectfully submitted,  
COAST-TO-COAST ANALYTICAL SERVICES, INC.

Dudley Torres  
Organics Manager



Air, Water & Hazardous Waste Sampling, Analysis & Consultation  
Certified Hazardous Waste, Chemistry, Bacteriology & Bioassay Laboratories

San Luis Obispo, CA • Benicia, CA • Camarillo, CA • San Jose, CA • Goleta, CA  
Anaheim, CA • Tempe, AZ • Valparaiso, IN • Westbrook, ME • Indianapolis, IN

NorCal Division (San Jose Laboratory)  
2059 Junction Ave.

San Jose, CA 95131  
(408) 955-9077

QC Batch ID: BNA-111593

CLIENT: Coast-to-Coast Analytical Services, Inc.

Analyzed : 11/22/93  
Analyzed by: DT  
Method : EPA 8270

METHOD BLANK  
REPORT OF ANALYTICAL RESULTS

Page 1 of 3

SAMPLE DESCRIPTION	MATRIX	SAMPLED BY	SAMPLED DATE RECEIVED		
METHOD BLANK	Free Product/ Liquid				
CONSTITUENT	(CAS RN)	*PQL mg/KG	RESULT mg/KG	NOTE	
SEMIVOLATILE ORGANIC COMPOUNDS					
Acenaphthylene	(208968)	200.	ND		
Acenaphthene	(83329)	200.	ND		
Anthracene	(120127)	200.	ND		
Benzidine	(92875)	2000.	ND		
Benzo(a)anthracene	(56553)	200.	ND		
Benzo(b)fluoranthene	(205992)	200.	ND		
Benzo(k)fluoranthene	(207089)	200.	ND		
Benzo(a)pyrene	(50328)	200.	ND		
Benzo(ghi)perylene	(191242)	200.	ND		
Bis(2-chloroethoxy)methane	(111911)	200.	ND		
Bis(2-chloroethyl)ether	(111444)	200.	ND		
Bis(2-chloroisopropyl)ether	(39638329)	200.	ND		
Bis(2-ethylhexyl)phthalate	(117817)	300.	ND		
4-Bromophenylphenylether	(101553)	200.	ND		
Butylbenzylphthalate	(85687)	200.	ND		
2-Chloronaphthalene	(91587)	200.	ND		
4-Chlorophenylphenylether	(7005723)	200.	ND		
Chrysene	(218019)	200.	ND		
Dibenzo(a,h)anthracene	(53703)	200.	ND		
Di-n-butylphthalate	(84742)	200.	ND		
1,2-Dichlorobenzene	(95501)	200.	ND		

San Jose Lab Certifications: CAELAP #1204

\*RESULTS listed as 'ND' were not detected at or above the listed PQL (Practical Quantitation Limit)

12/03/93

FIN3/BLK1115F

DT/et

JJ2402-17



Air, Water & Hazardous Waste Sampling, Analysis & Consultation  
Certified Hazardous Waste, Chemistry, Bacteriology & Bioassay Laboratories

San Luis Obispo, CA • Benicia, CA • Camarillo, CA • San Jose, CA • Goleta, CA  
Anaheim, CA • Tempe, AZ • Valparaiso, IN • Westbrook, ME • Indianapolis, IN

NorCal Division (San Jose Laboratory)  
2059 Junction Ave.

San Jose, CA 95131  
(408) 955-9077

QC Batch ID: BNA-111593

CLIENT: Coast-to-Coast Analytical Services, Inc.

Analyzed : 11/22/93  
Analyzed by: DT  
Method : EPA 8270

METHOD BLANK  
REPORT OF ANALYTICAL RESULTS

Page 2 of 3

SAMPLE DESCRIPTION	MATRIX	SAMPLED BY	SAMPLED DATE RECEIVED	
METHOD BLANK	Free Product/ Liquid			
CONSTITUENT	(CAS RN)	*PQL mg/KG	RESULT mg/KG	NOTE
1,3-Dichlorobenzene	(541731)	200.	ND	
1,4-Dichlorobenzene	(106467)	200.	ND	
3,3-Dichlorobenzidine	(91941)	2000.	ND	
Diethylphthalate	(84662)	200.	ND	
Dimethylphthalate	(131113)	200.	ND	
2,4-Dinitrotoluene	(121142)	200.	ND	
2,6-Dinitrotoluene	(606202)	200.	ND	
Di-n-octylphthalate	(117840)	200.	ND	
Fluoranthene	(206440)	200.	ND	
Fluorene	(86737)	200.	ND	
Hexachlorobenzene	(118741)	200.	ND	
Hexachlorobutadiene	(87683)	200.	ND	
Hexachlorocyclopentadiene	(77474)	200.	ND	
Hexachloroethane	(67721)	200.	ND	
Indeno(1,2,3-cd)pyrene	(193395)	200.	ND	
Isophorone	(78591)	200.	ND	
Methylnaphthalenes	(91576)	200.	ND	
Naphthalene	(91203)	200.	ND	
Nitrobenzene	(98953)	200.	ND	
N-Nitrosodimethylamine	(62759)	200.	ND	
N-Nitrosodiphenylamine	(86306)	200.	ND	
N-Nitrosodi-n-propylamine	(621647)	200.	ND	

San Jose Lab Certifications: CAELAP #1204

\*RESULTS listed as 'ND' were not detected at or above the listed PQL (Practical Quantitation Limit)

12/03/93

FIN3/BLK1115F

DT/et

JJ2402-17



Air, Water & Hazardous Waste Sampling, Analysis & Consultation  
Certified Hazardous Waste, Chemistry, Bacteriology & Bioassay Laboratories

San Luis Obispo, CA • Benicia, CA • Camarillo, CA • San Jose, CA • Goleta, CA  
Anaheim, CA • Tempe, AZ • Valparaiso, IN • Westbrook, ME • Indianapolis, IN

NorCal Division (San Jose Laboratory)  
2059 Junction Ave.

San Jose, CA 95131  
(408) 955-9077

QC Batch ID: BNA-111593

CLIENT: Coast-to-Coast Analytical Services, Inc.

Analyzed : 11/22/93  
Analyzed by: DT  
Method : EPA 8270

METHOD BLANK  
REPORT OF ANALYTICAL RESULTS

Page 3 of 3

SAMPLE DESCRIPTION	MATRIX	SAMPLED BY	SAMPLED DATE RECEIVED		
METHOD BLANK	Free Product/ Liquid				
CONSTITUENT	(CAS RN)	*PQL mg/KG	RESULT mg/KG	NOTE	
Phenanthrene	(85018)	200.	ND		
Pyrene	(129000)	200.	ND		
Trichlorobenzene	(108703)	200.	ND		
4-Chloro-3-methylphenol	(59507)	600.	ND		
2-Chlorophenol	(95578)	600.	ND		
Cresols (total)		600.	ND		
2,4-Dichlorophenol	(120832)	600.	ND		
2,4-Dimethylphenol	(105679)	600.	ND		
2,4-Dinitrophenol	(51285)	600.	ND		
2-Methyl-4,6-dinitrophenol	(534521)	600.	ND		
2-Nitrophenol	(88755)	600.	ND		
4-Nitrophenol	(100027)	600.	ND		
Pentachlorophenol	(87865)	600.	ND		
Phenol	(108952)	600.	ND		
2,4,6-Trichlorophenol	(88062)	600.	ND		
Phenol-d5 (Surrogate % Recovery)			80.		
2-Fluorophenol (Surrogate % Recovery)			110.		
2,4,6-Tribromophenol (Surrogate % Recovery)			60.		
Nitrobenzene-d5 (Surrogate % Recovery)			80.		
2-Fluorobiphenyl (Surrogate % Recovery)			100.		
4-Terphenyl-d14 (Surrogate % Recovery)			100.		

San Jose Lab Certifications: CAELAP #1204

\*RESULTS listed as 'ND' were not detected at or above the listed PQL (Practical Quantitation Limit)

12/03/93  
FIN3/BLK1115F  
DT/et  
JJ2402-17

Respectfully submitted,  
COAST-TO-COAST ANALYTICAL SERVICES, INC.

Dudley Torres  
Organics Manager



# CHAIN OF CUSTODY RECORD

JOB NUMBER: 241.0102.002  
NAME/LOCATION: POWELL STREET PLAZA  
PROJECT MANAGER: JDS

SAMPLERS: BLAINE TECH & PES

RECORDER: *Raymond Smith*  
(Signature Required)

DATE				SAMPLE NUMBER OR LAB NUMBER			SOURCE	MATRIX				# CONTAINERS & PRESERV.			DEPTH IN FEET	COL MTD CD	QA CODE
YR	MO	DY	TIME	YR	WK	SEQ		Water	Sedim?	Soil	Sl	Undres.	H <sub>2</sub> O <sub>2</sub>	HNO <sub>3</sub>			
93	11	10	0900	934500	17		X				3				-17		
<del>93</del>	<del>11</del>	<del>10</del>	<del>0900</del>	<del>934500</del>	<del>18</del>		X				3						
<del>93</del>	<del>11</del>	<del>10</del>	<del>0900</del>	<del>934500</del>	<del>19</del>												
93	11	10	0100	934500	20												

*CRIMIX PER ADS 11/11/93*

ANALYSIS REQUESTED	
TPH and GAs and TPH GAS	
Diesel (B260/8240)	
VOCs including BTEX and TOG 5520 D+F and SVOC 8270 and Chlorinated HCs including PCBs by 8082 and Total Metals 60107000 and Organic Lead by DHS 111 Method 338	
Priority Pollutant Metals	
Perene/Toluene/Xylene	
Total Petrol Hydrocarb.	

CHAIN OF CUSTODY RECORD			
RELINQUISHED BY: (Signature) <i>Raymond Smith</i>	RECEIVED BY: (Signature) <i>Edgar Diaz</i>	DATE	TIME
RELINQUISHED BY: (Signature) <i>Waldemar</i>	RECEIVED BY: (Signature)	DATE	TIME
RELINQUISHED BY: (Signature)	RECEIVED BY: (Signature)	DATE	TIME
RELINQUISHED BY: (Signature)	RECEIVED BY: (Signature)	DATE	TIME
DISPATCHED BY: (Signature)	RECEIVED FOR LAB BY: (Signature) <i>William Abraham</i>	DATE	TIME
METHOD OF SHIPMENT:		<i>COMP, CONTACT</i>	

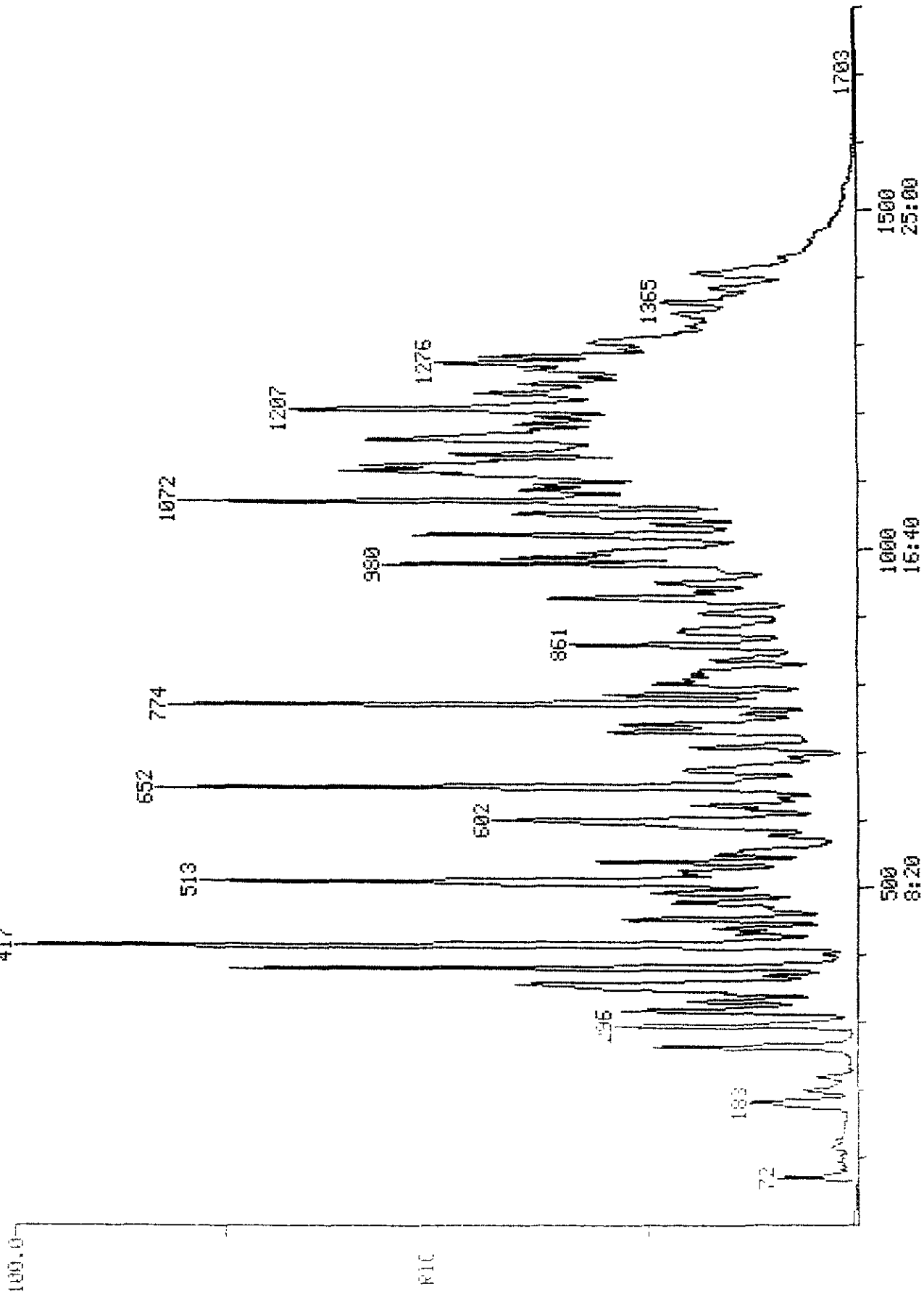
NOTES

*was placed in guard boxes to lab*

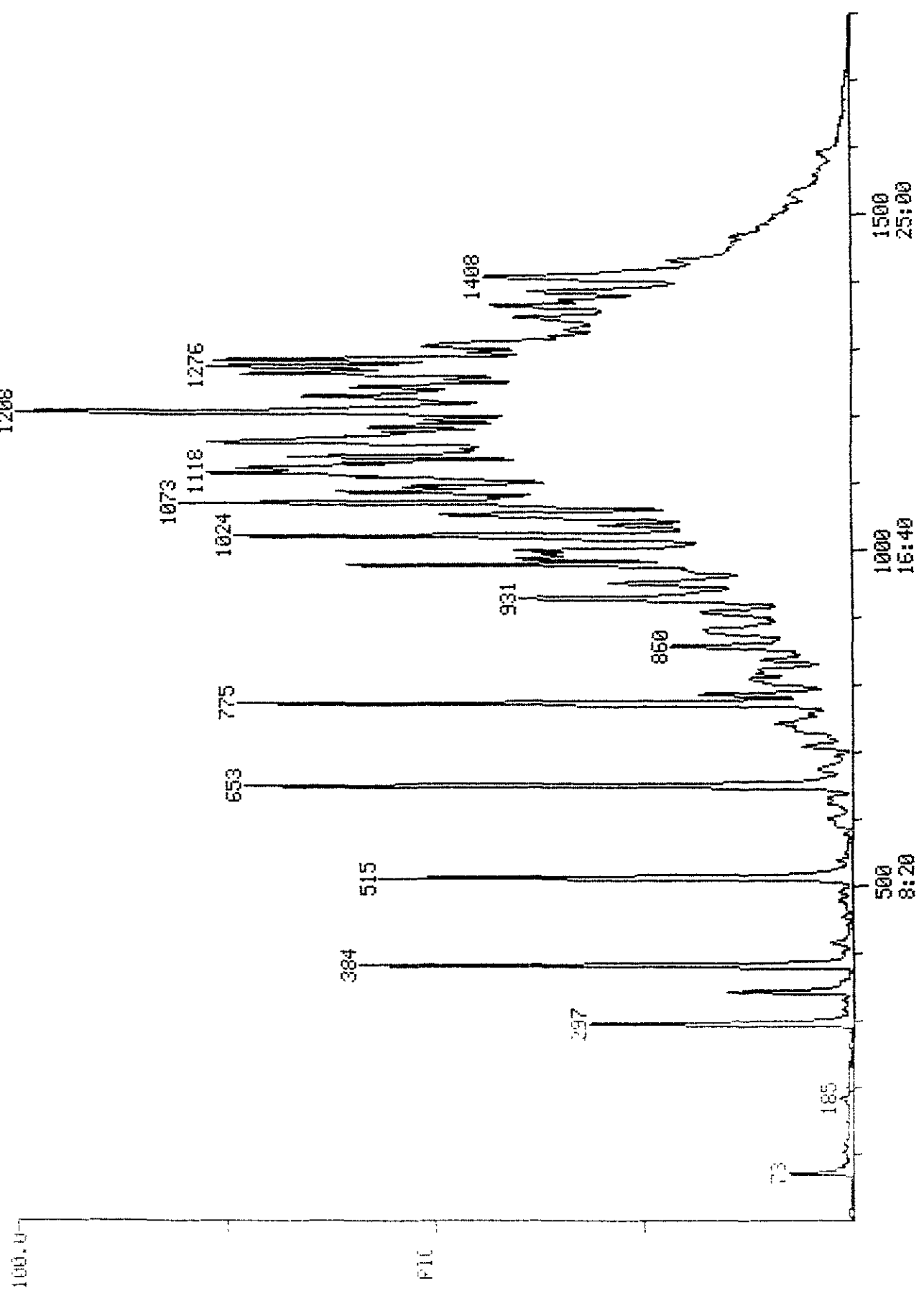


FILE: 111609B.M, 111609B.M.S, 111609B.V, EPA  
 DATA: 111609B #1  
 CALI: 111609B #3  
 SAMPLE: CLP.132., 111609B.M.S, 111609B.V, EPA  
 COND.: @ JUL-0.53G/10ML, JJ2402-178  
 RANGE: 0 1-1800 LABEL: N 0, 4.0 QUAN: A 0, 1.0 J 0 BASE: U 20, 3  
 133375.

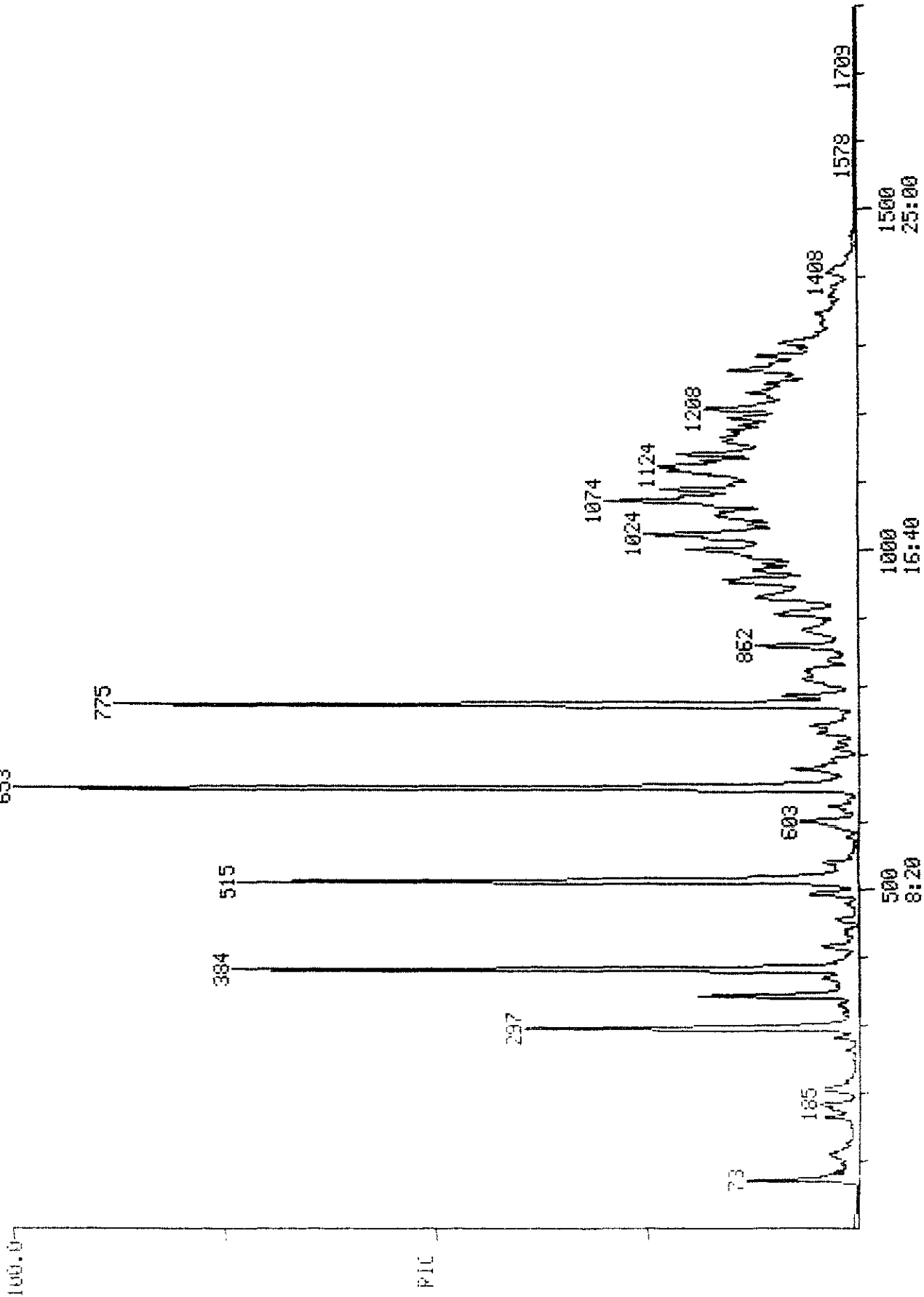
SCANS 1 TO 1800



810  
11 17 93 1:58:00  
DATA: 111617B #1  
CALI: 111617B #3  
SAMPLE: CLP-132, 111617B.M.S. 111617B.V.EPA  
CONDS.: @ 2 UL (0.59G/10ML), JJ2402-18A  
PHASE: 6 1-1800 LABEL: N 0, 4.0 QUAN: A 0, 1.0 J 0 BASE: U 20, 3  
1208  
193024.



PIC  
 11 18 93 23:08:00  
 SAMPLE: CLP.132.0.1116138.L.W.1116138.U.EPA  
 CONDS.: 50 UL 1:2 K DIESEL #2  
 RRIGE: G 1.1800 LABEL: N 0, 4.0 QUAN: A 0, 1.0 J 0 BASE: U 20, 3  
 DATA: 1116138 #1  
 CALI: 1116138 #3  
 SCANS 1 TO 1800  
 136448.



RIC 11-16-03 14:06:00 DATA: 111602B #1 SCANS 1 TO 1303  
CALI: 111602B #3  
SAMPLE: CLP-132-111602B.L.N.111602B.V.EPA  
CONDS.: @ 5 ML. 50 PFB 8240 STD  
RANGE: G 1-1308 LABEL: N 0, 4.0 QUAN: A 0, 1.0 J 0 BASE: U 20, 3  
201984.

