



Hilton

EMERYVILLE, CALIFORNIA

ED2 INTERNATIONAL

Architects / Planners

JULY 24, 1997



ED2 International

PLANNING
ARCHITECTURE
URBAN DESIGN
INTERIORS

1860 PACIFIC AVENUE
SAN FRANCISCO
CALIFORNIA 94109-2566
TEL. 415 474 1400
FAX 415 474 9110

Architect _____ Reg. No. _____



GARDEN INN
EMERYVILLE, CALIFORNIA

AN
**ORIENT &
WESTERN
(HOLDINGS)
CORPORATION
DEVELOPMENT**

Issuances and Revisions

No.	Date	Description

Scale: 0" = 24' 0"

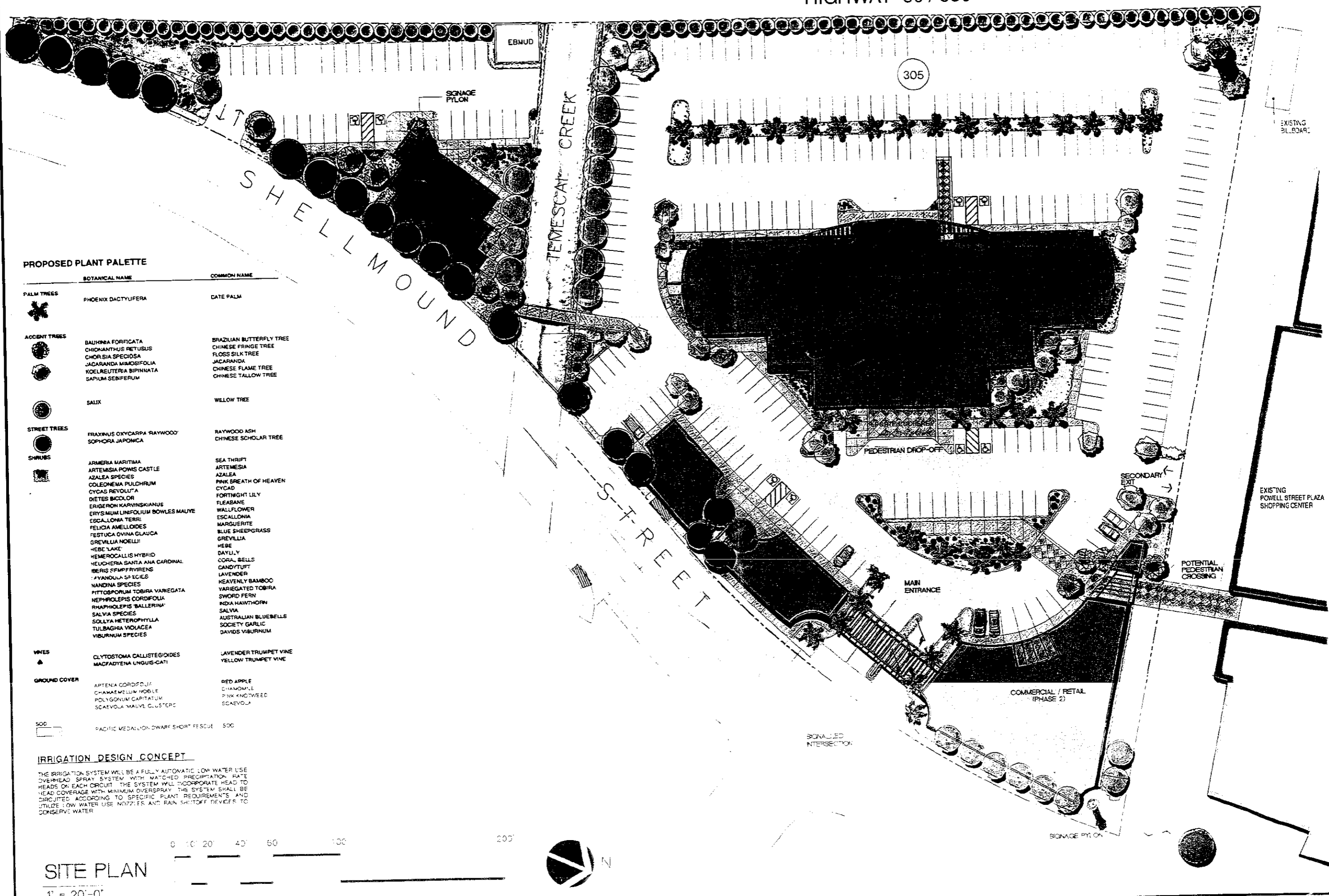
Sheet Title:
MODEL VIEW FROM
NORTH-EAST CORNER

Scale:
Project No. 8906 000

PM - 1

Sheet No. _____ Revision _____

HIGHWAY 80 / 580



PROPOSED PLANT PALETTE

	BOTANICAL NAME	COMMON NAME
PALM TREES	PHOENIX DACTYLOFERA	DATE PALM
ACCENT TREES	BALHARRIA FORFICATA CHROMOLAETHON RETUSUM CHORISIA SPECIOSA JACARANDA MIMOSIFOLIA KOELREUTERIA BIPINNATA SAPHUM SEMIFERUM	BRAZILIAN BUTTERFLY TREE CHINESE FRINGE TREE FLOSS SILK TREE JACARANDA CHINESE FLAME TREE CHINESE TALLOW TREE
	SALIX	WILLOW TREE
STREET TREES	FRAXINUS OXYCARPA 'RAYWOOD' SOPHORA JAPONICA	RAYWOOD ASH CHINESE SCHOLAR TREE
SHRUBS	ARMERIA MARITIMA ARTEMISIA POWIS CASTLE AZALEA SPECIES COLEONEMA PULCHRUM CYCAS REVOLUTA DIETES BICOLOR ERIGERON KARVINSKIANUS ERYSIUM LINIFOLIUM BOWLES MAUIE ESCALONIA TERRI FELICIA AMELLOIDES FESTUCA OVINA GLAUCOA GREVILLEA NOELLI HEBE 'LAKE' HEMEROCALLIS HYBRID HEUCHERA SANTA ANA CARDINAL BERIS SPMPFRVIRENS YANONDA SPECIES NANDINA SPECIES PITTOSPORUM TOBIRA VARIEGATA NEPHROLEPIS CORDIFOLIA RHAPHIOLEPIS 'BALLERINA' SALVIA SPECIES SOLYMA HETEROPHYLLA TULBAGHIA VIOLACEA VIBURNUM SPECIES	SEA THRIFT ARTEMISIA AZALEA PINK BREATH OF HEAVEN CYCAD FORTNIGHT LILY FLEASANE WALLFLOWER ESCALONIA MARGUERITE BLUE SHEEPGRASS GREVILLEA HEBE DAYLILY CORAL BELLS CANDYTUFT LAVENDER HEAVENLY BAMBOO VARIEGATED TOBIRA SWORD FERN INDIA HAWTHORN SALVIA AUSTRALIAN BLUEBELLS SOCIETY GARLIC DAVIDS VIBURNUM
VINES	CLYTOSTOMA CALLISTEGOIDES MACFADYENA UNGUIS-CATI	LAVENDER TRUMPET VINE YELLOW TRUMPET VINE
GROUND COVER	ARTENIA COROPOLIA CHAMAEMELUM NOBILE POLYGONUM CAPITATUM SCAEVOLA MAUIE CLUSTERS	RED APPLE CHAMOMILE PINK KNOTWEED SCAEVOLA
SOO	PACIFIC MEDALLION DWARF SHORT FESCUE	SOO

IRRIGATION DESIGN CONCEPT

THE IRRIGATION SYSTEM WILL BE A FULLY AUTOMATIC LOW WATER USE OVERHEAD SPRAY SYSTEM WITH MATCHED PRECIPITATION RATE HEADS ON EACH CIRCUIT. THE SYSTEM WILL INCORPORATE HEAD TO HEAD COVERAGE WITH MINIMUM OVERSPRAY. THE SYSTEM SHALL BE DIRECTED ACCORDING TO SPECIFIC PLANT REQUIREMENTS AND UTILIZE LOW WATER USE NOZZLES AND RAIN SHUTOFF DEVICES TO CONSERVE WATER.



SITE PLAN

1" = 20'-0"

ED2 International
PLANNING
ARCHITECTURE
URBAN DESIGN
INTERIORS
1680 PACIFIC AVENUE
SAN FRANCISCO
CALIFORNIA 94109-2569
TEL 415 474 1400
FAX 415 474 9110

Architect: **Hilton** Reg No.

GARDEN INN
EMERYVILLE, CALIFORNIA

AN
ORIENT & WESTERN (HOLDINGS) CORPORATION DEVELOPMENT

Issues and Revisions

No.	Date	Description

Date: 11/24/97

Project: **PRELIMINARY LANDSCAPE PLAN**

Project No.: 8806-005

Sheet No.: **ST-0** Revision:



ED2 International

PLANNING
ARCHITECTURE
URBAN DESIGN
INTERIORS

1660 PACIFIC AVENUE
SAN FRANCISCO
CALIFORNIA 94109-2569
TEL: 415 474-1400
FAX: 415 474-9110

Architect _____ Reg. No. _____



GARDEN INN
EMERYVILLE, CALIFORNIA

AN
**ORIENT &
WESTERN
(HOLDINGS)
CORPORATION
DEVELOPMENT**



Issues and Revisions

No. Date Description

No.	Date	Description

Date: 07-24-97

Sheet Title

CADD PERSPECTIVE FROM
SHELLMOUND LOOKING
SOUTH

Scale

Project No. 9606.000

ST - 1

Sheet No. _____ Revision _____



ED2 International

PLANNING
ARCHITECTURE
URBAN DESIGN
INTERIORS

1650 PACIFIC AVENUE
SAN FRANCISCO
CALIFORNIA 94109-2569
TEL: 415.474.1400
FAX: 415.474.9110

Architect _____ Reg. No. _____



GARDEN INN
EMERYVILLE, CALIFORNIA

AN
ORIENT &
WESTERN
(HOLDINGS)
CORPORATION
DEVELOPMENT



Issuances and Revisions

No.	Date	Description

Date: 07/24/87

Sheet Title:

3D PERSPECTIVE FROM
FREEWAY LOOKING
SOUTH

Scale:

Project No.: 9006 000

ST - 2

Sheet No. _____ Revisor _____



ED2 International

PLANNING
ARCHITECTURE
URBAN DESIGN
INTERIORS

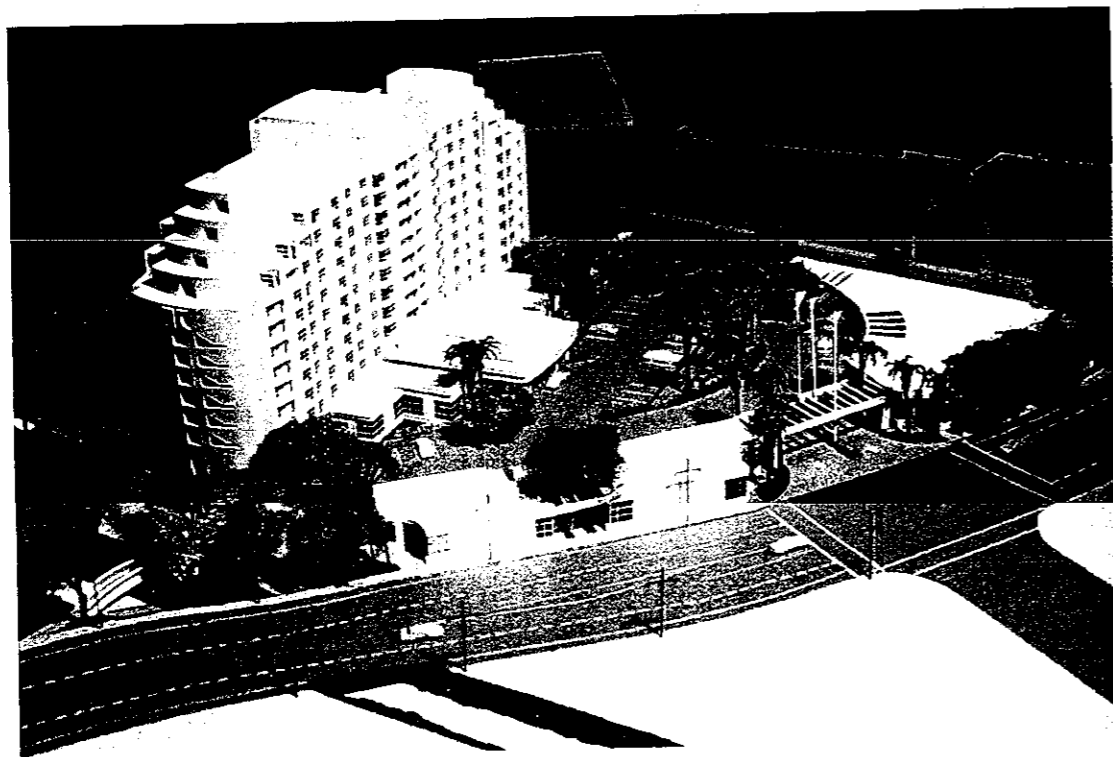
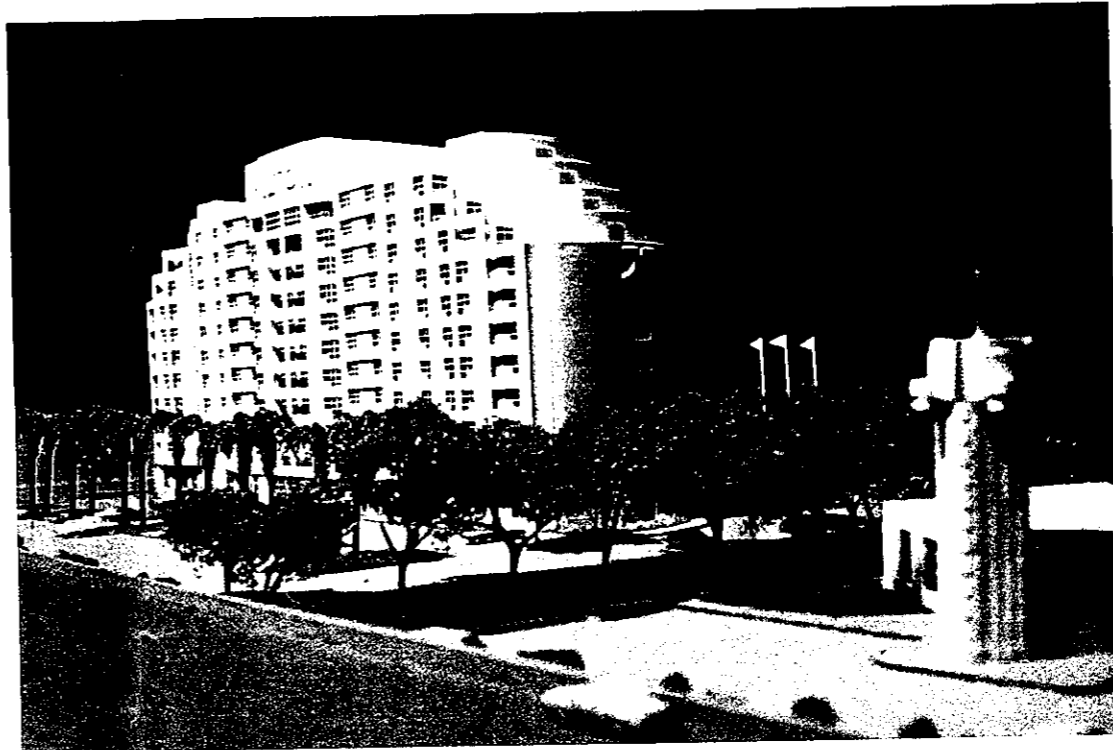
1600 PACIFIC AVENUE
SAN FRANCISCO
CALIFORNIA 94109-2560
TEL 415 474.1400
FAX 415 474.9110

Architect Reg. No.



GARDEN INN
EMERYVILLE, CALIFORNIA

AN
ORIENT &
WESTERN
(HOLDINGS)
CORPORATION
DEVELOPMENT



Issuances and Revisions:

No	Date	Description

Date: 07-24-87

Sheet Title:

MULTIPLE VIEWS

Scale:

Project No.: 8500-000

PM - 2

Sheet No. Revision



ED2 International

PLANNING
ARCHITECTURE
URBAN DESIGN
INTERIORS

1650 PACIFIC AVENUE
SAN FRANCISCO
CALIFORNIA 94109-2569
TEL: 415.474.1400
FAX: 415.474.9110

Architect Reg. No.



GARDEN INN
EMERYVILLE, CALIFORNIA

AN
ORIENT &
WESTERN
(HOLDINGS)
CORPORATION
DEVELOPMENT

Issuances and Revisions

No.	Date	Description

Date: 07/24/97

Sheet Title

VISUAL SIMULATIONS

Scale

Project No: 9506 000

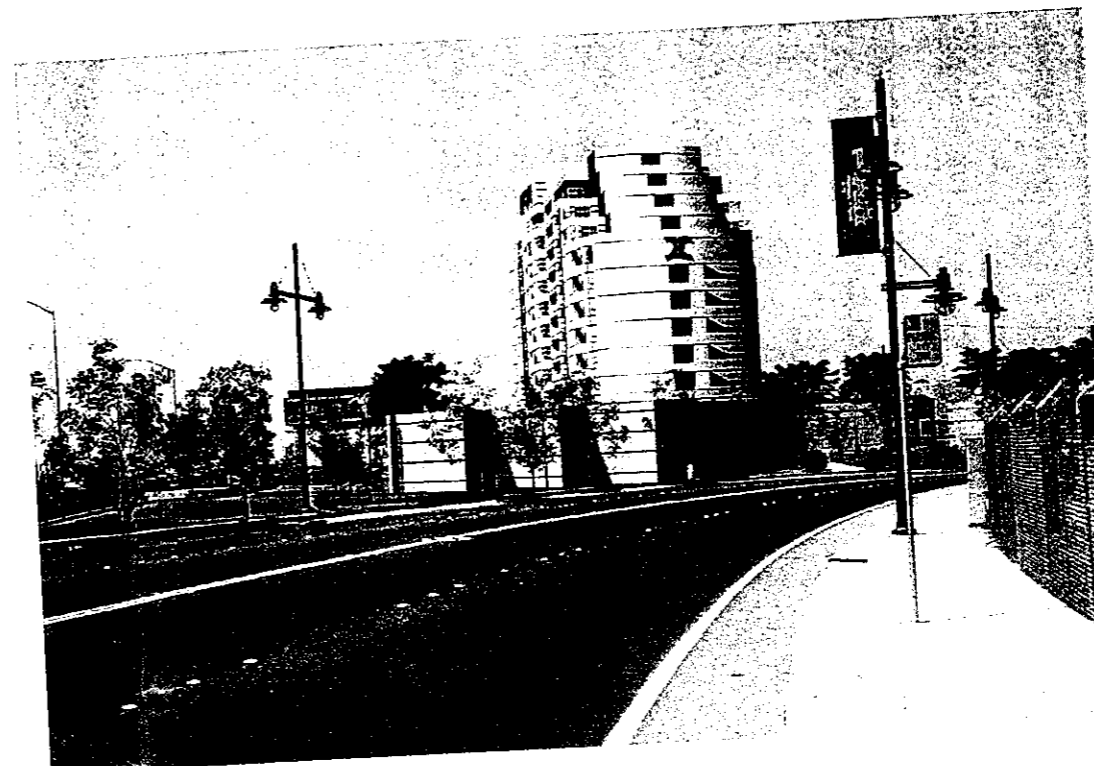
VS - 1

Sheet No

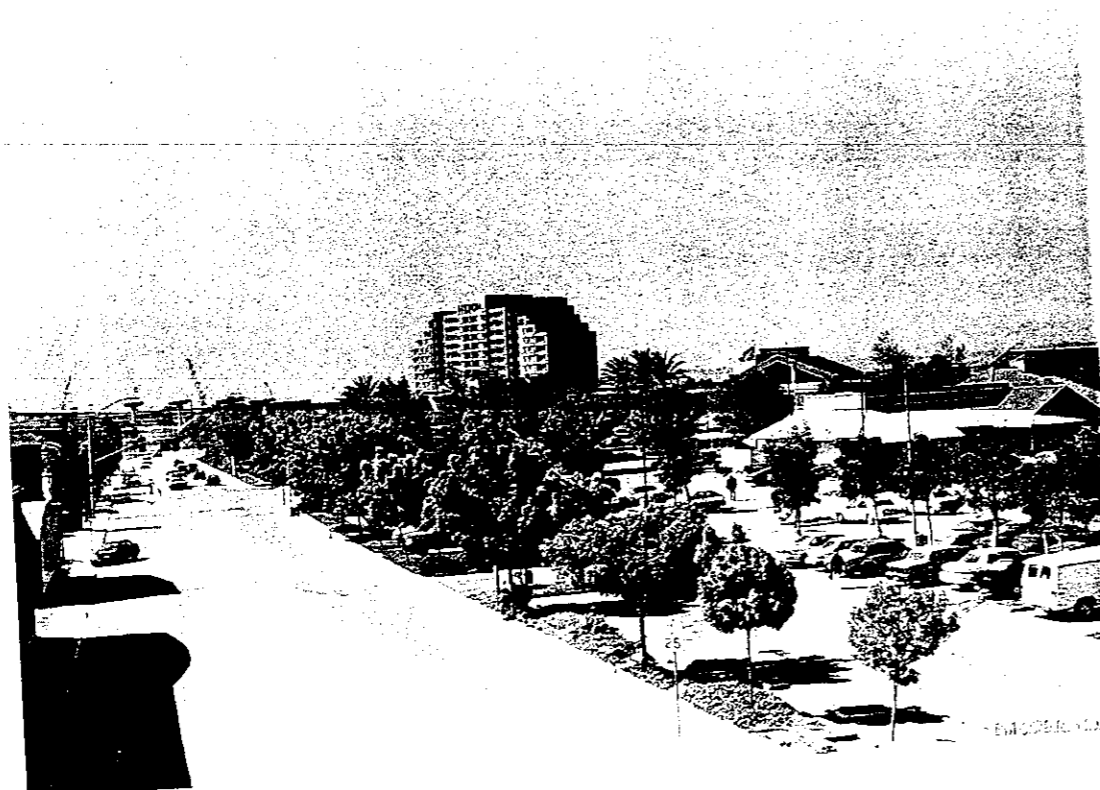
Revision



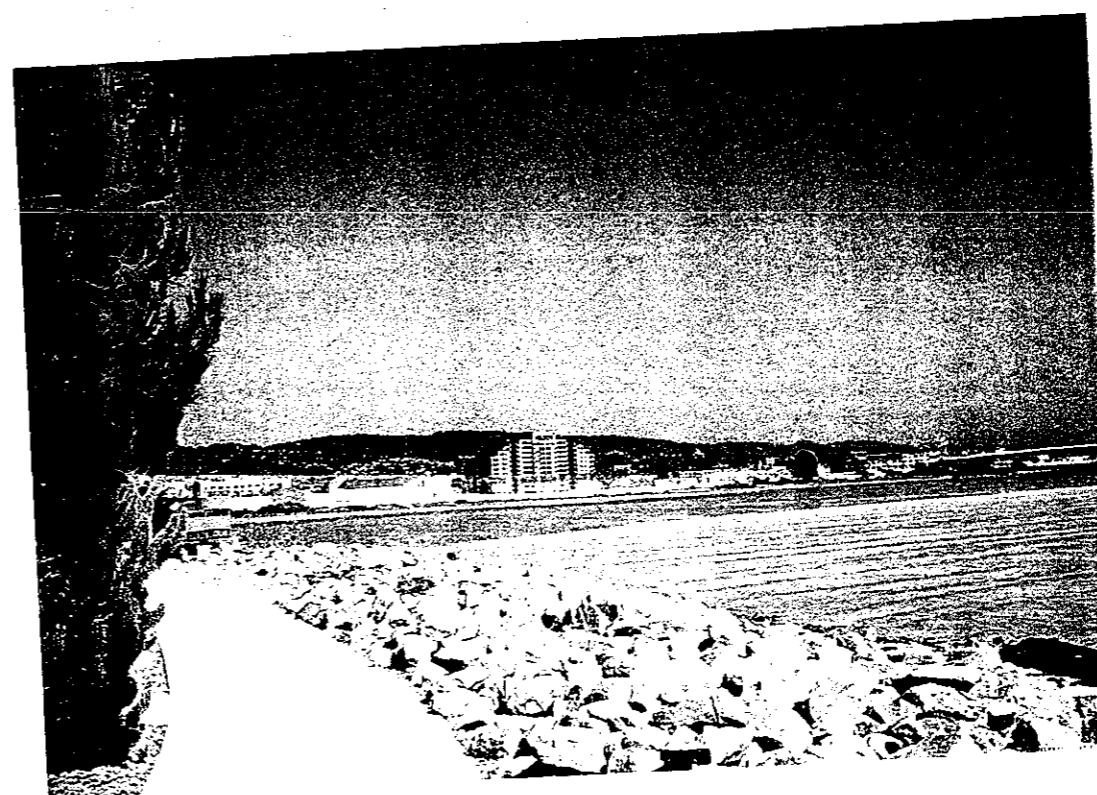
View from freeway looking north



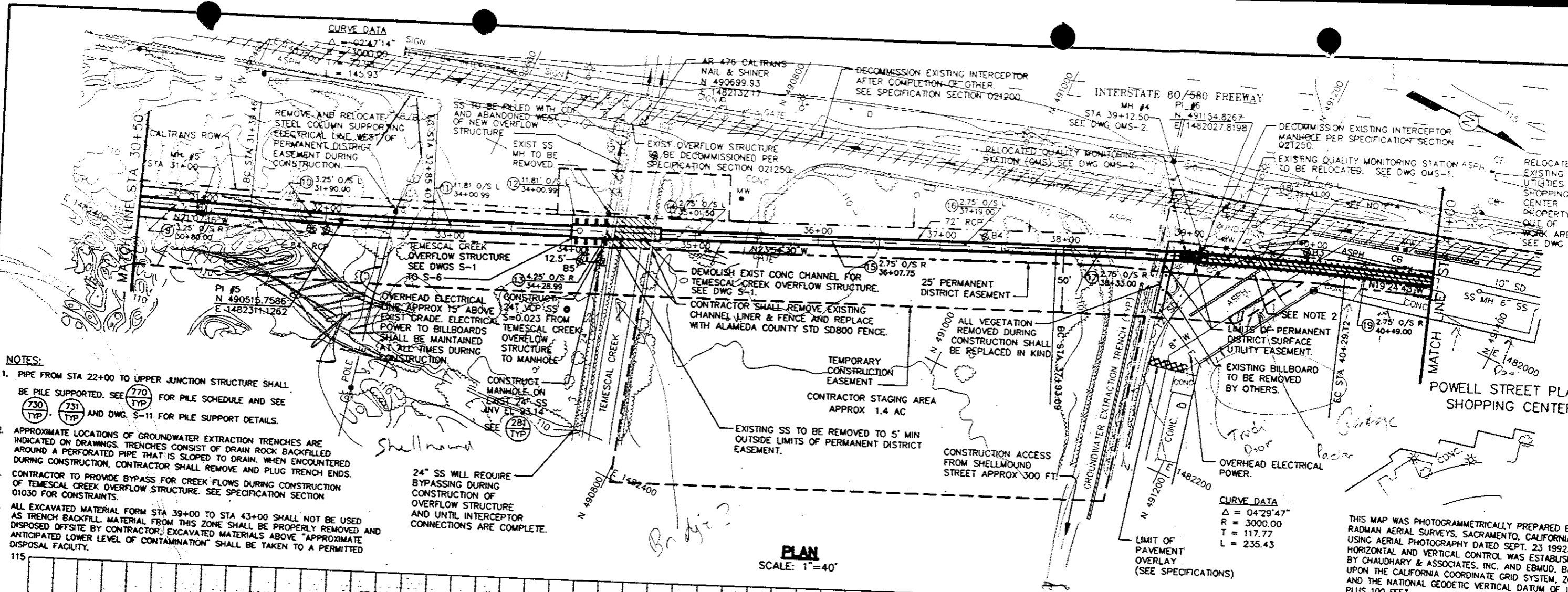
View from Shellmound looking north



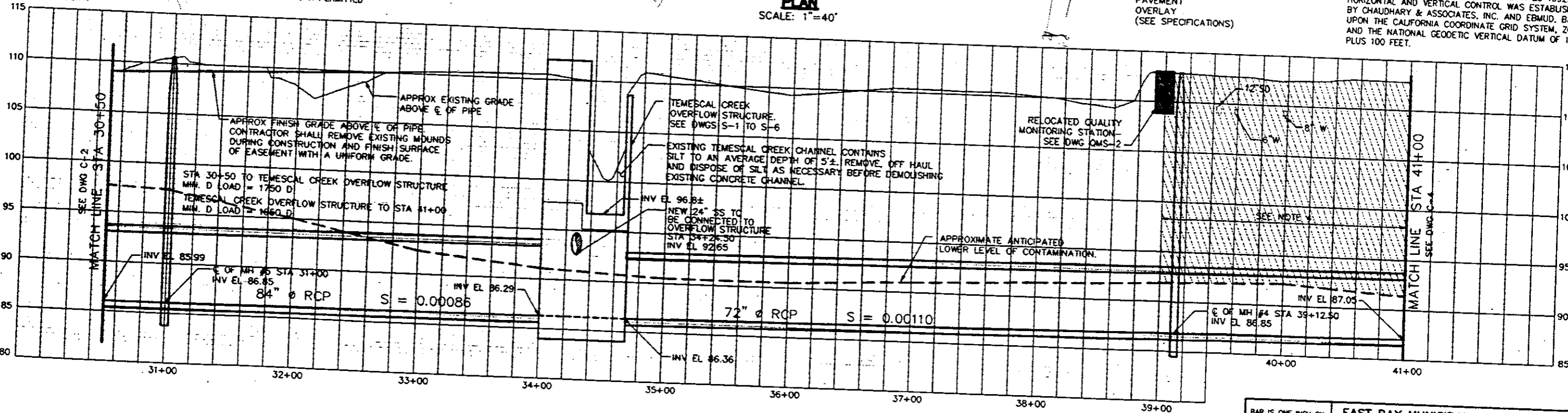
View from Shellmound looking south



View from Firehouse looking east



- NOTES:**
- PIPE FROM STA 22+00 TO UPPER JUNCTION STRUCTURE SHALL BE PILE SUPPORTED. SEE (770) TYP FOR PILE SCHEDULE AND SEE (730) TYP (731) TYP AND DWG. S-11 FOR PILE SUPPORT DETAILS.
 - APPROXIMATE LOCATIONS OF GROUNDWATER EXTRACTION TRENCHES ARE INDICATED ON DRAWINGS. TRENCHES CONSIST OF DRAIN ROCK BACKFILLED AROUND A PERFORATED PIPE THAT IS SLOPED TO DRAIN. WHEN ENCOUNTERED DURING CONSTRUCTION, CONTRACTOR SHALL REMOVE AND PLUG TRENCH ENDS.
 - CONTRACTOR TO PROVIDE BYPASS FOR CREEK FLOWS DURING CONSTRUCTION OF TEMESCAL CREEK OVERFLOW STRUCTURE. SEE SPECIFICATION SECTION 01030 FOR CONSTRAINTS.
 - ALL EXCAVATED MATERIAL FROM STA 39+00 TO STA 43+00 SHALL NOT BE USED AS TRENCH BACKFILL. MATERIAL FROM THIS ZONE SHALL BE PROPERLY REMOVED AND DISPOSED OFFSITE BY CONTRACTOR. EXCAVATED MATERIALS ABOVE "APPROXIMATE ANTICIPATED LOWER LEVEL OF CONTAMINATION" SHALL BE TAKEN TO A PERMITTED DISPOSAL FACILITY.



PROFILE
SCALE: HORIZ. 1"=40'
VERT. 1"=5'

CURVE DATA
Δ = 04°29'47"
R = 3000.00
T = 117.77
L = 235.43

THIS MAP WAS PHOTOGRAMMETRICALLY PREPARED BY RADMAN AERIAL SURVEYS, SACRAMENTO, CALIFORNIA USING AERIAL PHOTOGRAPHY DATED SEPT. 23 1992. HORIZONTAL AND VERTICAL CONTROL WAS ESTABLISHED BY CHAUDHARY & ASSOCIATES, INC. AND EBMUD, BASED UPON THE CALIFORNIA COORDINATE GRID SYSTEM, ZONE 10N AND THE NATIONAL GEODETIC VERTICAL DATUM OF 1983 PLUS 100 FEET.

PROJECT ENGINEER: **JOHN CAROLLO ENGINEERS** (Professional Engineer Seal No. C27809)

PROJECT SUPERVISOR: **Patrick A. Clinton** (Professional Engineer Seal No. C27809)

JOHN CAROLLO ENGINEERS

NORTH INTERCEPTOR RELOCATION
1994
SD-200

EAST BAY MUNICIPAL UTILITY DISTRICT
SPECIAL DISTRICT No. 1
OAKLAND, CALIFORNIA

CIVIL
PLAN AND PROFILE
STA 30+50 TO STA 41+00

DESIGNED BY: SEP
DESIGN CHECKED BY: WCL
DRAWN BY: GRM/PFC
IN CHARGE: RLS

PROJECT SUPERVISOR: Patrick A. Clinton
PROJECT ENGINEER: **John Carollo**

DATE: MARCH 15, 1994

DRAWING No. **C-3**
SHEET 5 OF 27

Potential Primary Source

Potential Primary Release

Potential Secondary Source

Potential Secondary Release

Potential Tertiary Source

Potential Exposure Medium

Potential Exposure Pathways

Potential Receptors

Former Gasoline, Diesel, Waste Oil/Grease Underground Storage Tanks (Removed)

Leaks

Groundwater/
Separate Phase

Subsurface Soil

Volatilization

Groundwater/
Separate Phase

Air

Subsurface Soil

Temescal Creek/
SF Bay

Groundwater/
Separate Phase -
Excavation Areas

Indoor Air

Ambient Air

Resuspension

Subsurface Soil -
Excavation Areas

Ingestion

Dermal Contact

Dermal Contact

Inhalation of
Vapors

Inhalation of
Vapors/Dust

Ingestion

Dermal Contact

	Construction/Maintenance Workers	Building Occupants	Off-site Receptors	Recreational Users	Non-human Receptors
Ingestion				●	●
Dermal Contact				●	●
Dermal Contact	●				
Inhalation of Vapors	●	●			
Inhalation of Vapors/Dust	●		●		
Ingestion	●				
Dermal Contact	●				

underground off site process

DRAFT

Note

1. It has been assumed that shallow groundwater is not currently used and is not likely to be used as a drinking water source.

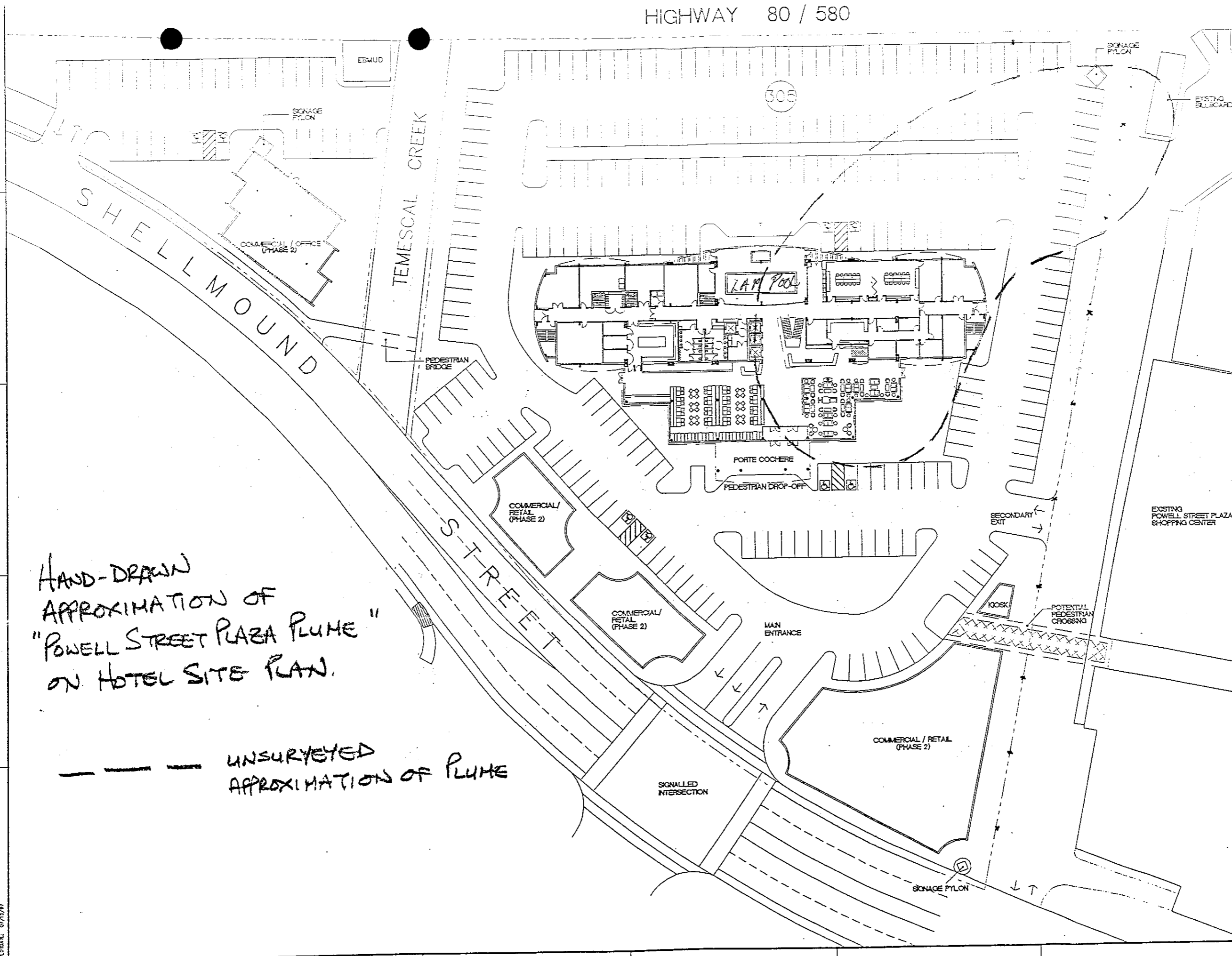
PRELIMINARY SITE CONCEPTUAL MODEL
Powell Street Plaza
Emeryville, California



Project No.
3182

Figure
1

HIGHWAY 80 / 580



HAND-DRAWN
 APPROXIMATION OF
 "POWELL STREET PLAZA PLUME"
 ON HOTEL SITE PLAN.

----- UNSURVEYED
 APPROXIMATION OF PLUME

ED2 International
 PLANNING
 ARCHITECTURE
 URBAN DESIGN
 INTERIORS
 1550 PACIFIC AVENUE
 SAN FRANCISCO
 CALIFORNIA 94109-2550
 415-474-1400

Architect: *H. H. H.*
GARDEN CITY
 EMERYVILLE, CALIFORNIA

AN
**ORIENT &
 WESTERN
 (HOLDINGS)
 CORPORATION
 DEVELOPMENT**

Issues and Revisions

No.	Date	Description

Date: 07/15/97
 Sheet Title:
SITE PLAN
 Scale: 1" = 30'-0"
 Project No. 5606.000

SK-1
 Sheet No. Revision

PROBARE 07/13/97