

ACTIVITY RECORD

 Health Care Services



RO #: 58

DATE: 8/13/09

TIME: 10:30 met on site

- Meeting
- Site Visit/Inspection
- Telephone Conversation
- Document Review
- Peer Review

HAZ MAT SPECIALIST: Barbara Jakub
 Work Location: 1131 Harbor Bay Pkwy, Alameda
 Conferee(s): _____
 Phone #: _____

SITE NAME & ADDRESS: Conoco Phillips, 35th Ave, Oak.
 TOPIC: Site Utilities &
 SUMMARY:

10:30 Met Terry Grasso of CP, James Barnard (Delta), Tony of Buss Dittley
to discuss (round location, CP to send new map of piping locations & provide
new drilling method.
11:30 Depart site
11:50 Arrive office.

[Close Page](#)



[Home Page](#)

CONE PENETRATION TESTING EQUIPMENT

30/25/20-TON TRUCK MOUNTED CPT RIGS

Gregg Drilling & Testing, Inc. maintains a fleet of specially designed cone penetration vehicles which are designed and built in-house. By customizing our own equipment we are able to efficiently respond to the changing needs of our clients.

These large trucks provide:

- Hydraulic jacking and reaction systems
- 30/25/20 ton thrust capacity
- Advanced computer monitoring and data reporting systems
- Climate controlled working space for operators, geologists, and engineers
- Stainless steel rig enclosures provide efficient laboratory space
- Decontamination sink
- Under carriage cameras to aid operator in rig positioning



30 ton CPT Rig

DIMENSIONS:

Length:	32' (Highway) 34'4" (Off road)
Width:	8'6" (Highway) 8'2" (Off road)
Working Height:	12'6" (Highway) 14'10" (Off road)
Travel Height:	11'5" (Highway) 13'10" (Off road)



Stainless steel interiors on all CPT rigs provide laboratory space for collecting environmental samples and decontaminating equipment.

CPT Advantages

- Detailed hydrogeologic profiling at an average rate of 400 to 500 feet per day
- Provides a near continuous log of the site lithology
- Real-time data enabling an accurate, on-site, lithologic subsurface representation
- Ideal for sands, silts, clays, soft soils and mine tailings
- Provides piezometric data in addition to geotechnical design parameters
- Add-ons such as seismic, resistivity, UVIF and gamma modules provide additional data

greggdrilling.com

[home](#) | [about us](#) | [environmental services](#) | [geotechnical services](#) | [marine services](#) | [equipment](#)
[contact us](#) | [site map](#) | [the rock shop](#)

© Gregg Drilling & Testing, Inc. All rights reserved.

2726 Walnut Avenue, Signal Hill, CA 90755 • Email: info@greggdrilling.com

Close Page



Home Page

CONE PENETRATION TESTING EQUIPMENT

CPT SUPPORT TRUCKS

The trucks are designed for use when hole grouting and other auxiliary services are required. Each truck maintains a hollow-stem-auger drill rig, ChemGrout plant, steamcleaner, and hydraulic hammer.

Dimensions: Length: 25 feet
 Height (mast down): 8 feet
 Height (mast up): 12 feet 6 inches
 Width: 8 feet
 34'4" (Off road)

Torque: 1,800 pounds per foot



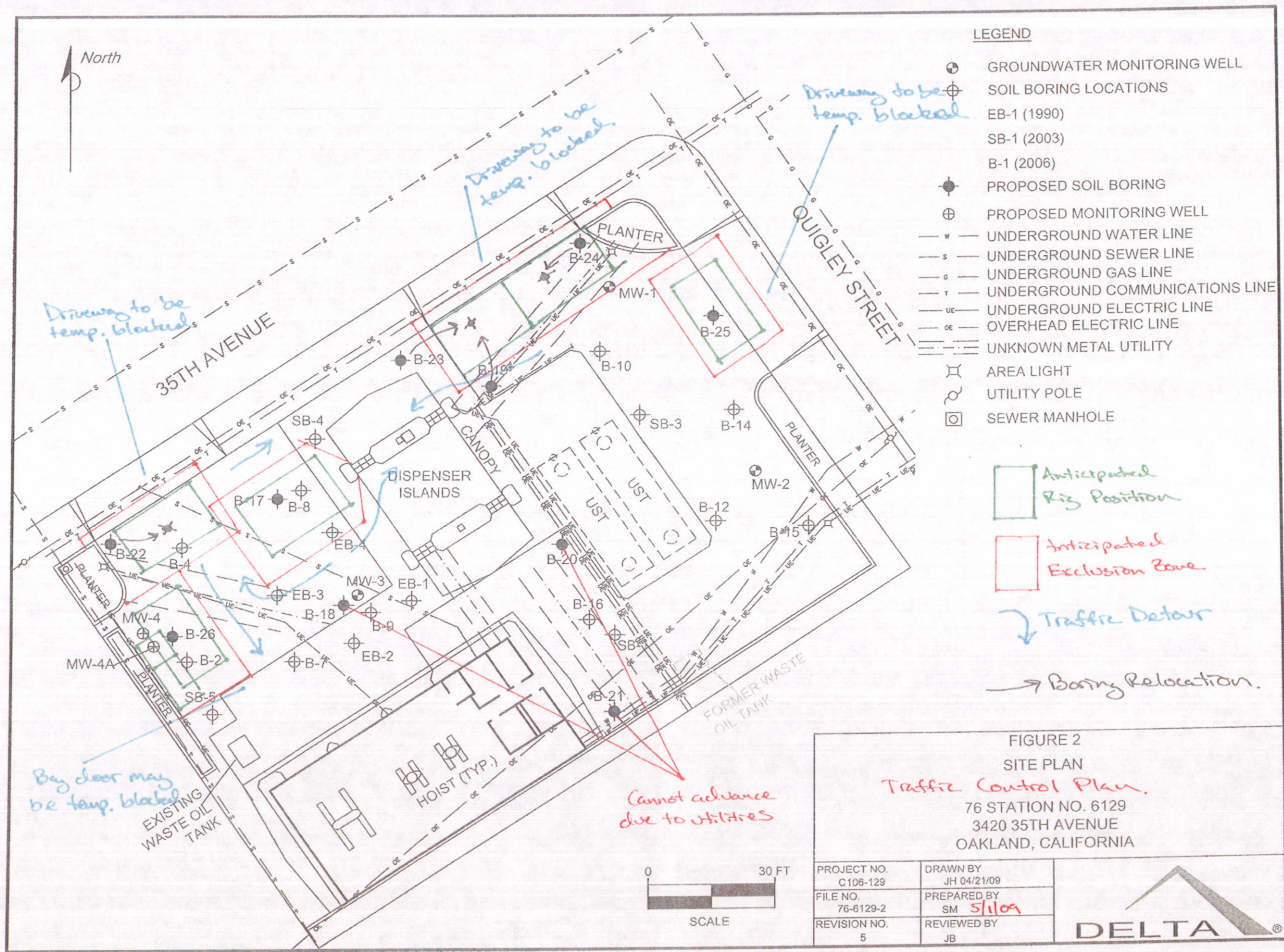
greggdrilling.com

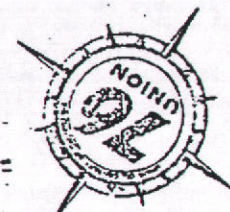
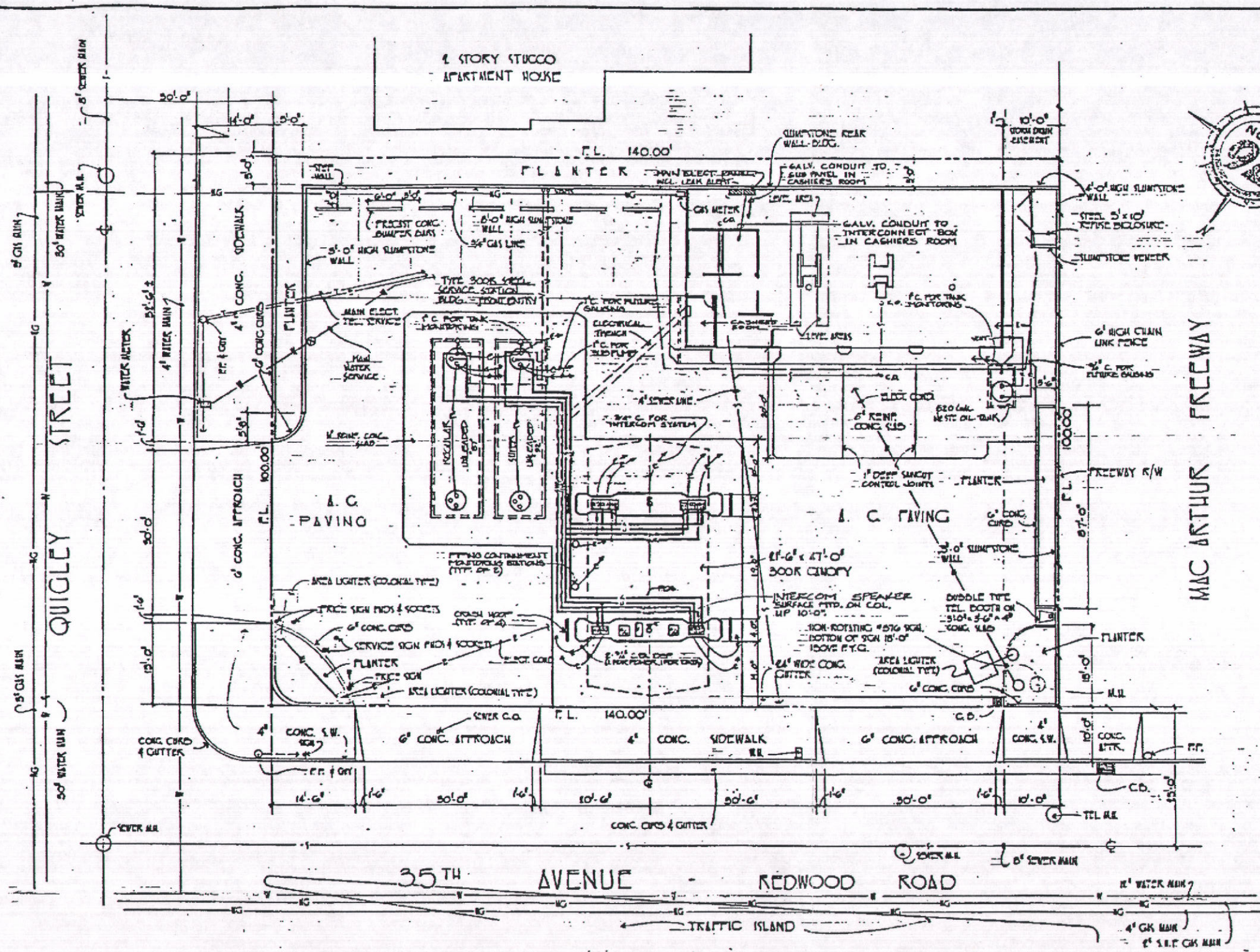
[home](#) | [about us](#) | [environmental services](#) | [geotechnical services](#) | [marine services](#) | [equipment](#)

[contact us](#) | [site map](#) | [the rock shop](#)

© Gregg Drilling & Testing, Inc. All rights reserved.

2726 Walnut Avenue; Signal Hill, CA 90755 • Email: info@greggdrilling.com





WESTERN REGION BOX:
#9532

Store # 256129 Date: 07/07/1961
 Unit # 6129 Code: GEN Color
 Description: GEN ARRANGEMENT

NO.	DATE	DESCRIPTION

GRAPHIC SCALE
 0 10 20 30 40 50
 PROPERTY OWNED BY UNION OIL COMPANY
 BOUNDED THIS:
 DATE OF COMPLETION: APRIL 5, 1961

NO.	DATE	REVISION	BY	APPROVED FOR CONSTRUCTION
01-01		UNDERGROUND FACILITIES INSTALLED AS SHOWN	GR	
02-01		ADD V.E. UNITS FROM PUMPERS TO TANKS	SK	
03-01		ADD SPEAKER & CASHIER ROOM	JK	
04-01		NEW U.O. STORAGE & WASTE OIL TRO & OVEN		
05-01		PLANING INSTALLED BY PARADOX 11-0-61		

CONTRACTOR	CONTR. JOB NO.
GENERAL ARRANGEMENT SERVICE STATION NO 6129 55TH AVENUE & QUIGLEY STREET OAKLAND, CALIFORNIA	
UNION OIL COMPANY OF CALIFORNIA LOS ANGELES, CALIF.	F-5-6129-1.1