



ENVIRONMENTAL HEALTH DEPARTMENT  
ENVIRONMENTAL PROTECTION  
1131 Harbor Bay Parkway, Suite 250  
Alameda, CA 94502-6577  
(510) 567-6700  
FAX (510) 337-9335

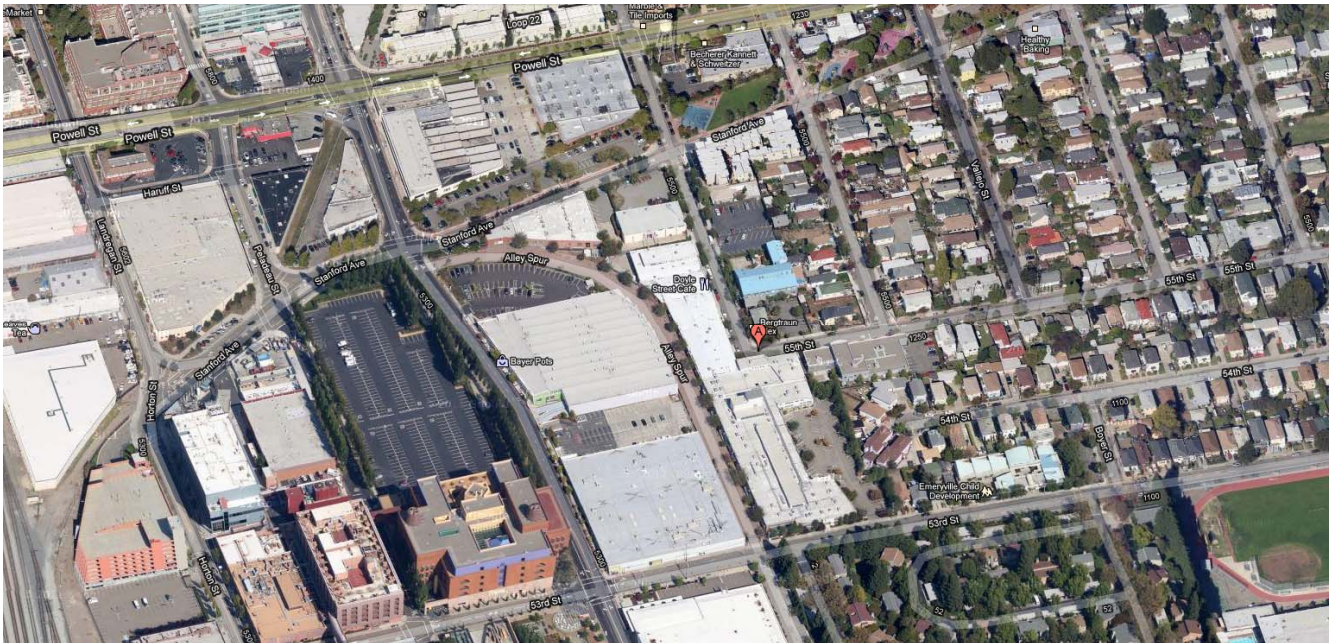
**PUBLIC NOTIFICATION OF POTENTIAL CLOSURE OF FUEL LEAK CASE**  
**1397 55<sup>th</sup> Street, Emeryville, CA 94608**  
**March 11, 2011**

**Site Name: Thoroughbred Building**  
**Site Location: 1397 55<sup>th</sup> Street, Emeryville, CA 94608**  
**Fuel Leak Case RO000050 and Geotracker Global ID T0600102100**

**Summary** – This fact sheet has been prepared to inform community members and other interested parties of potential case closure for a fuel leak case

at 1397 55<sup>th</sup> Street in Emeryville, California. Tank removal and site investigation activities have been completed by the property owner and it does not appear that the fuel release presents a risk to human health based upon the current commercial land use. Future construction activities or changes in land use will require a re-evaluation of site data.

Figure 1:



**Background** – A 550- or 700-gallon capacity UST was removed from the site in February 1997. It is reported not to have been in use since the 1950's and to have stored kerosene. Tank bottom confirmation samples indicated up to 4,400 mg/kg kerosene to be present in soil at 8.5 feet below grade surface. A work plan for two soil bores was submitted in January 2007, modifications including additional bore locations and soil samples were requested; however, in May 2007 only two soil bores were placed, one in the UST pit (bore GW-

01), and one approximately 10 feet southwest from the pit (bore GW-02). No soil samples were collected. Only soil bore GW-02 was logged. Groundwater was encountered at a depth of approximately 14 feet bgs, and an attempt to collect groundwater between 11 – 16 feet bgs in bore GW-01 was unsuccessful. Grab groundwater samples were collected at 15 – 20 feet and 30 – 35 feet bgs (GW-01) and at 25 – 30 feet bgs (GW-02). All groundwater results were nondetectable at standards limits of detection. Documentation of

manifested soil disposal is not currently available; however, a bill of lading was located that indicate 25 tons of backfill sand were imported on February 14, 1997 to backfill the excavation.

address below; all comments will be forwarded to the responsible party. **Comments received by April 15, 2011** will be considered and responded to prior to a final determination on the proposed case closure.

**Next Step** – The public is invited to review and comment on the potential closure of the fuel leak case. The entire case file can be viewed over the internet on the ACEH website at <http://www.acgov.org/aceh/lop/ust.htm> or at the State of California Water Resources Control Board Geotracker website <http://geotracker.swrcb.ca.gov>. Please send written comments to Mark Detterman at the

Additional information: Contact Mark Detterman of the Alameda County Department of Environmental Health, 1131 Harbor Bay Parkway, Alameda, CA 94502 at 510-567-6876 or by email at [mark.detterman@acgov.org](mailto:mark.detterman@acgov.org).

