

25 March 2005

Hi Amir

Alameda County
MAR 29 2005
Environmental Health

You need to provide written direction regarding the next step for this site.

You may want to consider

- ① Continued monitoring 2x per year plus a risk assessment.
- ② Continued monitoring 2x per year plus preparation of a corrective action plan.

If you want us to write a letter recommending one of these - just let us know.

Feel free to call or email.

Doug

STREAMBORN

Douglas W. Lovell, PE
Geoenvironmental Engineer

Mobile 510-520-3146
Berkeley Office Phone 510-528-4234
Berkeley Office Fax 510-528-2613
Bethel Island Phone 925-684-3676

email Doug@FishFirst.com
Mail PO Box 8330, Berkeley CA 94707-8330
Office 900 Santa Fe Avenue, Albany CA 94706

Jeffrey M. Eandi
Eandi Metal Works
976 Twenty-Third Avenue
Oakland CA 94606

25 March 2005

Project No. P279

Letter Report
Groundwater Monitoring Conducted 2 March 2005
2440 East Eleventh Street
Oakland CA
RO No. 29

Alameda County
MAR 29 2005
Environmental Health

Dear Mr. Eandi:

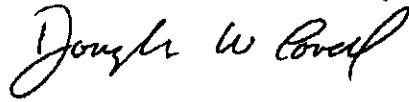
This letter report documents the results of groundwater monitoring conducted 2 March 2005 for three monitoring wells at the property. The results of our work are summarized in the following:

- Table 1 provides a chronology of environmental activities.
- Table 2 summarizes groundwater level and gradient data.
- Table 3 summarizes groundwater purging and sampling information. Purge water generated during sampling was containerized onsite in labeled drums.
- Table 4 summarizes the groundwater analytical data.
- Figure 1 provides a location map (USGS).
- Figure 2 shows a vicinity map.
- Figure 3 provides a site plan and shows the groundwater levels and gradient (2 March 2005).
- Attachment 1 contains the groundwater sampling forms
- Attachment 2 contains the laboratory reports and chain-of-custody forms.

Please contact us with any questions or comments.

Sincerely,

STREAMBORN



Douglas W. Lovell, PE
Geoenvironmental Engineer



Expires 12/31/06

Attachments

cc: Chuck Hedley/San Francisco Bay RWQCB, Oakland CA
Amir Gholami/Alameda County Health Care Services, Alameda CA

Table 1 (Page 1 of 2)
Environmental Chronology
2440 East Eleventh Street
Oakland CA

Date	Performed By	Event
Unknown	Unknown	<ul style="list-style-type: none"> 1,000-gallon underground leaded gasoline tank installed.
15 August 1991	Eandi Metal Works	<ul style="list-style-type: none"> The 1,000-gallon tank was emptied of product. Use of the tank was discontinued.
11 May 1992	Unknown	<ul style="list-style-type: none"> The 1,000-gallon tank was removed. Contamination was discovered.
10 July 1995	AGI Technologies	<ul style="list-style-type: none"> Five soil borings were drilled. Soil samples were collected and analyzed for TPH-gasoline, BTEX, MtBE (EPA Method 8020), and total metals. Three of the borings were completed as monitoring wells (MW-1, MW-2, and MW-3). The other two borings (E-1 and E-2) were grouted. Water levels were measured in wells MW-1, MW-2, and MW-3. MW-1, MW-2, and MW-3 were developed and groundwater samples were collected. Samples were analyzed for TPH-gasoline, BTEX, MtBE (EPA Method 8020), and total lead. Elevation survey was conducted for MW-1, MW-2, and MW-3.
17 July 1995	AGI Technologies	<ul style="list-style-type: none"> Groundwater levels were measured in MW-1, MW-2, and MW-3. Groundwater samples were collected from MW-1, MW-2, and MW-3. Samples were analyzed for TPH-gasoline, BTEX, MtBE (EPA Method 8020), and total lead.
20 October 1995	AGI Technologies	<ul style="list-style-type: none"> Groundwater levels were measured in MW-1, MW-2, and MW-3. Groundwater samples were collected from MW-1, MW-2, and MW-3. Samples were analyzed for TPH-gasoline, BTEX, and total lead.
25 January 1996	AGI Technologies	<ul style="list-style-type: none"> Groundwater levels were measured in MW-1, MW-2, and MW-3. Groundwater samples were collected from MW-1, MW-2, and MW-3. Samples were analyzed for TPH-gasoline, BTEX, MtBE (EPA Method 8020), and total lead.
25 April 1996	AGI Technologies	<ul style="list-style-type: none"> Groundwater levels were measured in MW-1, MW-2, and MW-3. Groundwater samples were collected from MW-1, MW-2, and MW-3. Samples were analyzed for TPH-gasoline, BTEX, MtBE (EPA Method 8020), and total lead.
11 - 12 June 2001	Kleinfelder	<ul style="list-style-type: none"> Groundwater levels were measured in MW-1, MW-2, and MW-3. Groundwater samples were collected from MW-1, MW-2, and MW-3. Samples were analyzed for TPH-gasoline, BTEX, and total lead.
5 February 2002	Kleinfelder	<ul style="list-style-type: none"> Groundwater levels were measured in MW-1, MW-2, and MW-3. Groundwater samples were collected from MW-1, MW-2, and MW-3. Samples were analyzed for TPH-gasoline, BTEX, MtBE (EPA Method 8020), and total lead.
9 June 2004	Streamborn	<ul style="list-style-type: none"> Using a backhoe, the excavation for the former tank was partially excavated. Soil samples were collected from the base (7.5-8 feet below ground surface) and each of the four sidewalls (5-5.5 feet below ground surface) by exposing native soil and driving a 6-inch diameter brass liner into the soil. Soil samples were laboratory analyzed for TPH-diesel/kerosene/stoddard solvent, TPH-gasoline/BTEX/fuel oxygenates (EPA Method 8260), and total lead.
12 August 2004	Streamborn	<ul style="list-style-type: none"> Groundwater levels were measured in MW-1, MW-2, and MW-3. Groundwater samples were collected from MW-1, MW-2, and MW-3. Samples were analyzed for TPH-gasoline/BTEX/fuel oxygenates (EPA Method 8260) and total lead. Seven geoprobe borings (B1, B2, B3, B4, B5, B6, and B7) were drilled to depths between 20 and 32 feet). Soil samples were collected continuously in the borings. Two soil samples were retained from each of the borings for chemical analysis. One soil sample approximately coincided with the depth of groundwater observed during drilling and the other soil sample coincided with the bottom of the boring. Soil samples were analyzed for TPH-gasoline/BTEX/fuel oxygenates (EPA Method 8260) and total lead. Temporary casings were installed in the borings and allowed to stabilize for at least one hour. Water levels were measured. Purged groundwater samples were collected from the temporary casings. Samples were analyzed for TPH-gasoline/BTEX/fuel oxygenates (EPA Method 8260) and total lead. The temporary casings were removed from the borings and the borings were grouted.
17-23 September 2004	Streamborn	<ul style="list-style-type: none"> Using a backhoe, the excavation for the former tank was completely re-excavated. The excavated soil was air-dried and replaced in the excavation using ±2-foot lifts. Each lift was compacted using a whacker. Six-inches of imported Class II aggregate base was placed as the last lift of soil. The pavement and sidewalk were repaved with reinforced concrete. The concrete thickness was 8 inches. The reinforcement was #5 rebar on 12-inch centers.
2 March 2005	Streamborn	<ul style="list-style-type: none"> Groundwater levels were measured in MW-1, MW-2, and MW-3. Groundwater samples were collected from MW-1, MW-2, and MW-3. Samples were analyzed for TPH-gasoline/BTEX/fuel oxygenates (EPA Method 8260).

Table 1 (Page 2 of 2)
Environmental Chronology
2440 East Eleventh Street
Oakland CA

General Notes

- (a) AGI Technologies = AGI Technologies (Bellevue WA).
- (b) Kleinfelder = Kleinfelder (Oakland CA).
- (c) Streamborn = Streamborn (Berkeley CA).
- (d) TPH-gasoline = total petroleum hydrocarbons as gasoline.
- (e) BTEX = benzene, toluene, xylenes, and total xylenes.
- (f) MtBE = methyl tert-butyl ether.

Table 2
Groundwater Level and Gradient Data
2440 East Eleventh Street
Oakland CA

Location	MW-1		MW-2		MW-3		Groundwater Gradient	
Ground Surface Elevation	NM		NM		NM			
Measuring Point GPS Coordinates	N 37° 46.808' W 122° 14.135'		N 37° 46.804' W 122° 14.152'		N 37° 46.799' W 122° 14.176'			
Measuring Point Elevation	TOC N Side = 99.90		TOC N Side = 99.57		TOC N Side = 98.45			
Intercepted Interval	Depth	Elev	Depth	Elev	Depth	Elev	Direction	Magnitude
	10 to 20	NM	10 to 20	NM	10 to 20	NM		
14 July 1995	9.72	90.18	10.74	88.83	10.95	87.50	-	-
17 July 1995	11.11	88.79	10.93	88.64	11.04	87.41	-	-
20 October 1995	11.96	87.94	11.92	87.65	12.11	86.34	-	-
25 January 1996	8.14	91.76	8.23	91.34	8.83	89.62	-	-
11-12 June 2001	10.35	89.55	11.50	88.07	11.08	87.37	-	-
5 February 2002	11.00	88.90	11.10	88.47	11.30	87.15	-	-
12 August 2004	10.95	88.95	11.17	88.40	11.77	86.68	N 115° W	0.02
2 March 2005	8.25	91.65	8.44	91.13	9.36	89.09	N 120° W	0.03
Total Depth (Last Measurement)	19.7		19.8		19.6			

General Notes

- (a) Measurements cited in units of feet.
- (b) NM = not measured.
- (c) TOC = top of PVC casing. N = north. Measuring points are the top of the PVC casing, north side.
- (d) Depth to groundwater and total depth measured from the measuring point.
- (e) Groundwater level measurements in 1995 through 1996 performed by AGI Technologies (Bellevue WA).
- (f) Groundwater level measurements in 2001 and 2002 performed by Kleinfelder (Oakland CA).
- (g) Groundwater level measurements since 2004 performed by Streamborn (Berkeley CA).
- (h) Elevations referenced to site-specific datum (not Mean Sea Level).
- (i) Elevation surveying by AGI Technologies (Bellevue WA).
- (j) Streamborn (Berkeley CA) measured GPS coordinates on 2 March 2005 using a Garmin GPS II meter.
- (k) Intercepted intervals correspond to the sand pack interval. Depths of intercepted intervals measured relative to the adjacent pavement or ground surface.

Table 3
Well Purging and Sampling Information Since 2001
2440 East Eleventh Street
Oakland CA

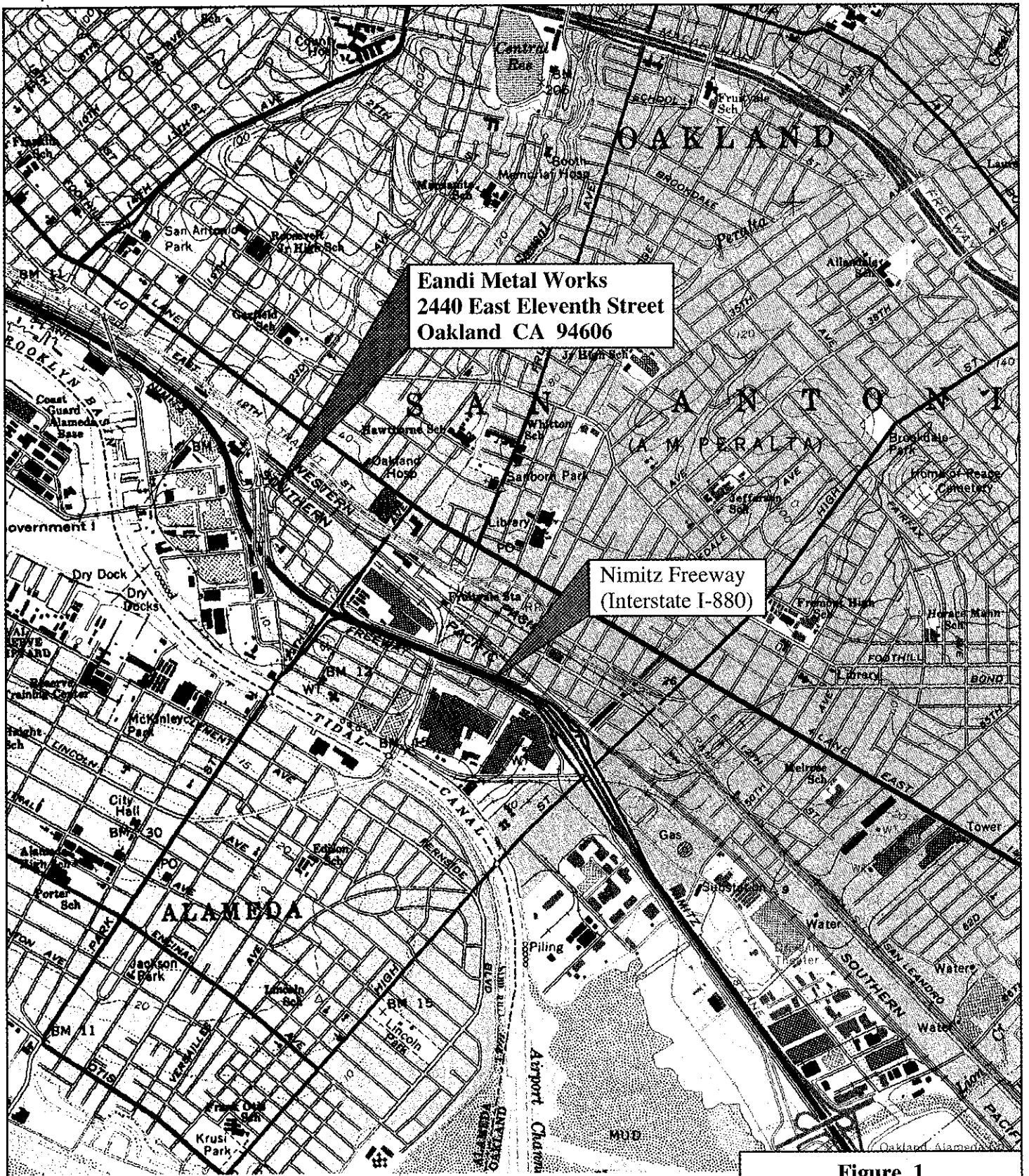
Well No.	Sample Date	Sample Time	Purge Method	Purge Duration (minutes)	Approximate Volume Purged (gallons)	Volume Purged (static water casing volumes)	Purged Dry?	Dissolved Oxygen (mg/L)	pH	Specific Conductance (µS/cm)	Temp (°C)	ORP (mV)	Turbidity/Color
MW1	11 Jun 01	NM	Purge Pump	NM	20	NC	no	NM	6.8	310	21.4	NM	NM
	5 Feb 02	NM	Purge Pump	NM	4	NC	no	NM	6.6	290	18.8	NM	NM
	12 Aug 04	12:40	Submersible Pump	4	5	±3	no	1.1	7.0	230	18.8	-130	Clear/none
	2 Mar 05	2:42	Submersible Pump	7	6	±3	no	2.2	6.9	230	17.1	-160	Clear/none
MW2	12 Jun 01	NM	Purge Pump	NM	15	NC	no	NM	7.1	430	17.2	NM	NM
	5 Feb 02	NM	Purge Pump	NM	4	NC	no	NM	6.6	400	16.8	NM	NM
	12 Aug 04	12:09	Submersible Pump	4	5	±3	no	2.0	6.8	510	18.9	-170	Turbid/grey
	2 Mar 05	2:07	Submersible Pump	7	6	±3	no	2.2	6.7	490	17.7	-220	Clear/none
MW3	12 Jun 01	NM	Purge Pump	NM	12	NC	no	NM	7.4	440	17.2	NM	NM
	5 Feb 02	NM	Purge Pump	NM	4	NC	no	NM	6.6	410	17.8	NM	NM
	12 Aug 04	11:15	Submersible Pump	8	4	±3	no	1.7	6.6	440	19.0	-150	Clear/none
	2 Mar 05	1:30	Submersible Pump	6	5	±3	no	2.3	6.8	500	18.1	-200	Clear/none

General Notes

- (a) NM = not measured.
- (b) NC = not calculated.
- (c) ORP = oxygen-reduction potential.
- (d) Measurements prior to 2004 by Kleinfelder (Oakland CA).
- (e) Measurements since 2004 by Streamborn (Berkeley CA).

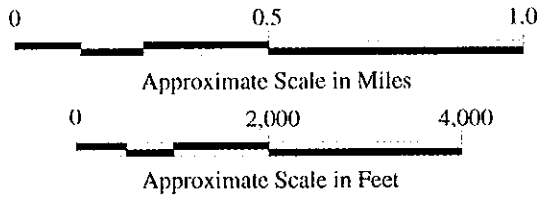
Table 4
Groundwater Analytical Data from Monitoring Wells
2440 East Eleventh Street
Oakland CA

Location	Sample Date	Sample Type	Total Lead (µg/L)	TPH-Gasoline (µg/L)	Benzene (µg/L)	Toluene (µg/L)	Ethyl-benzene (µg/L)	Total Xylenes (µg/L)	MtBE (µg/L)	Other Fuel Oxygenates (EPA Method 8260) (µg/L)
MW-1	17 Jul 1995	Grab	<40	22,000	390	2,000	800	5,300	<125	NM
	20 Oct 1995	Grab	<40	14,000	270	540	360	1,800	NM	NM
	25 Jan 1996	Grab	<40	16,000	740	1,300	490	2,700	<500	NM
	25 Apr 1996	Grab	<40	4,600	180	450	190	1,000	<250	NM
	11 Jun 2001	Grab	14	7,100	14	35	240	720	NM	NM



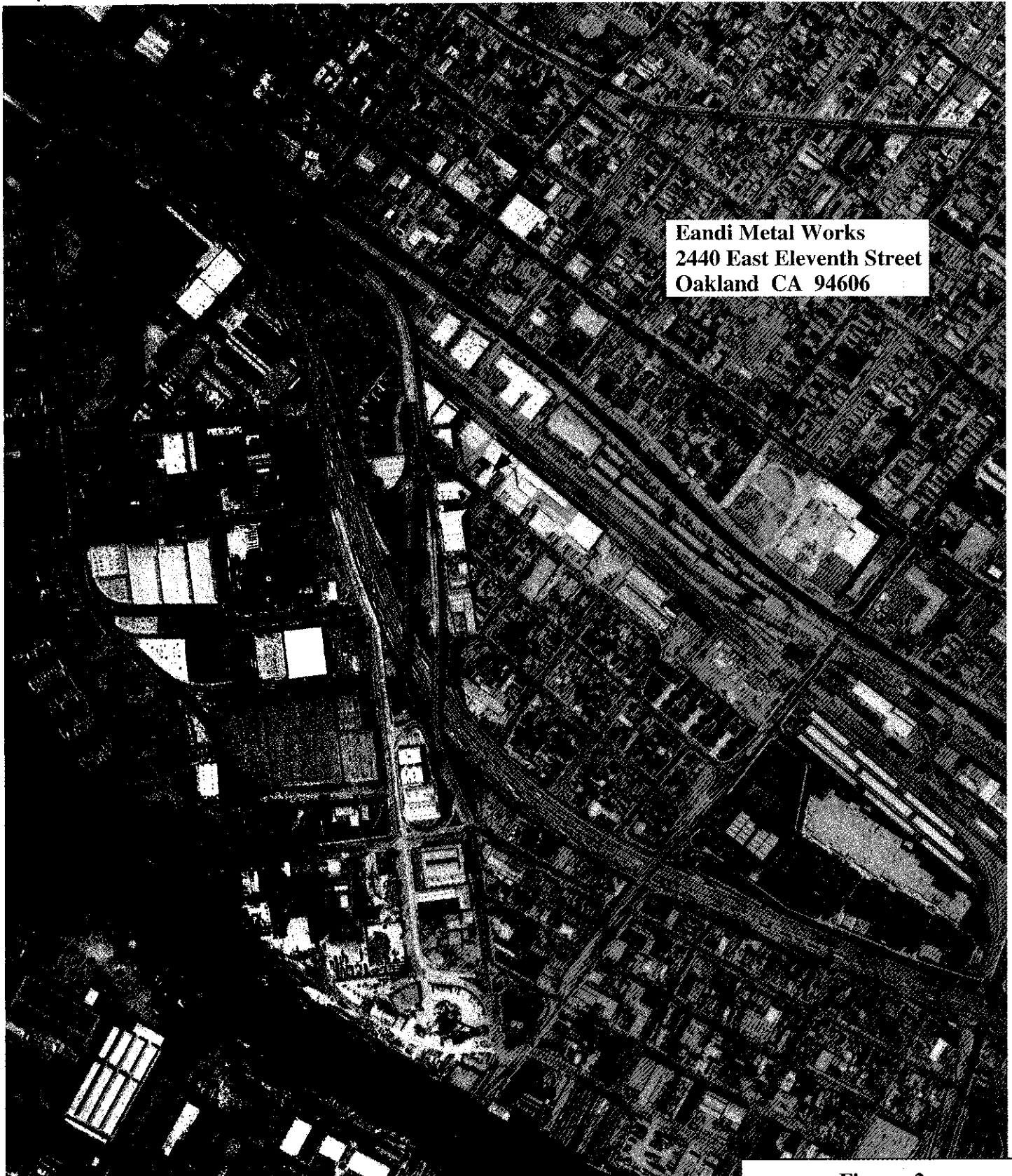
Eandi Metal Works
 2440 East Eleventh Street
 Oakland CA 94606

Nimitz Freeway
 (Interstate I-880)



Basemap: U.S. Geological Survey, 7.5 Minute Quadrangle, Oakland East CA. 1959 (Photorevised 1980)

Figure 1
Location Map
 2440 East Eleventh Street
 Oakland CA



**Eandi Metal Works
2440 East Eleventh Street
Oakland CA 94606**

Figure 2

Vicinity Map

**2440 East Eleventh Street
Oakland CA**



0 100 200

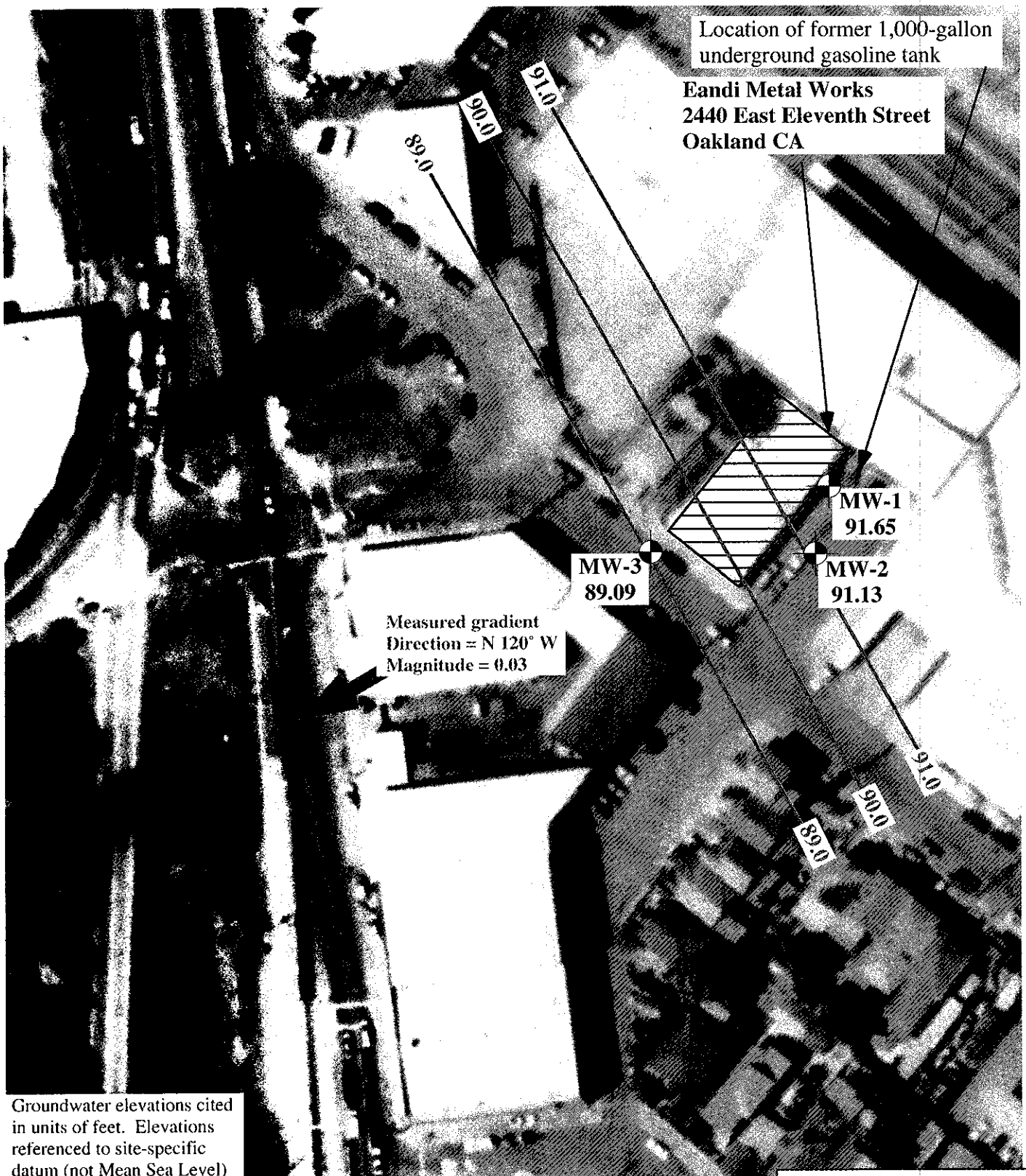


Approximate Scale in Feet

Basemap: Aerial photograph, flown 24 August 1998, photograph number ALA-AV-6100-11-38, original scale 1:12,000. Pacific Aerial Surveys, Oakland CA

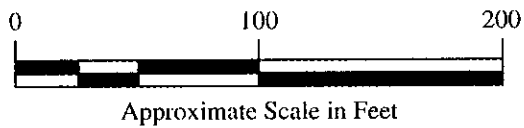
Location of former 1,000-gallon underground gasoline tank

Eandi Metal Works
2440 East Eleventh Street
Oakland CA



Measured gradient
Direction = N 120° W
Magnitude = 0.03

Groundwater elevations cited in units of feet. Elevations referenced to site-specific datum (not Mean Sea Level)



Legend

 Monitoring well

Figure 3

Groundwater Levels and Gradient (2 March 2005)

**2440 East Eleventh Street
Oakland CA**

Basemap: Aerial photograph, flown 24 August 1998, photograph number ALA-AV-6100-11-38, original scale 1:12,000. Pacific Aerial Surveys, Oakland CA

ATTACHMENT 1

Groundwater Sampling Forms

MONITORING WELL PURGE DATA

Project Name/Number: Eandi Metal Works / P279	Logged By: Matthew B. Hall
Property Location: 2440 East Eleventh Street, Oakland CA	Date: 2 March 2005
Well Number: MW1	Sample Type: Grab
Purging Equipment: Submersible pump	Depth to Water: 8.25
Sampling Equipment: Bailer with bottom-emptying device	Total Depth: 19.7
Measuring Point: Top of casing, north side	Odor: None
Free Product: None	Sample Number: MW1 (2 Mar 05)
Comments: None	

Note obstructions, well damage, or other compromising features under comments. Record depth in feet.

Total Depth (feet)	-	Depth to Water (feet)	x	0.04 gallons/foot for 1-inch well 0.16 gallons/foot for 2-inch well 0.65 gallons/foot for 4-inch well 1.47 gallons/foot for 6-inch well	=	Single Casing Volume (gallons)		Three Casing Volumes (gallons)
19.7	-	8.25	x	0.16	=	1.3	x 3	5.4

Purge Volume (gallons)	Time	Dissolved Oxygen (mg/L)	pH	Specific Conductivity (µS/cm)	Temp (°C)	ORP (mV)	Turbidity	Color	Purged Dry?	Comments
0	2:35	2.06	6.90	247	17.5	-176.7	TURBID	GREY	No	Start purge
3	2:38	2.17	6.92	245	17.4	-156	Clear	None	No	
6	2:42	2.22	6.87	235	17.1	-158	Clear	None	No	
										Collect sample

Note observations of odor, sheen, and other signs of contamination under comments. Record turbidity as clear, translucent, opaque, cloudy, or turbid.

MONITORING WELL PURGE DATA

Project Name/Number: Eandi Metal Works / P279	Logged By: Matthew B. Hall
Property Location: 2440 East Eleventh Street, Oakland CA	Date: 2 March 2005
Well Number: MW2	Sample Type: Grab
Purging Equipment: Submersible pump	Depth to Water: 8.44
Sampling Equipment: Bailer with bottom-emptying device	Total Depth: 19.8
Measuring Point: Top of casing, north side	Odor: Slight Petroleum
Free Product: None	Sample Number: MW2 (2 March 2005)
Comments: None	

Note obstructions, well damage, or other compromising features under comments. Record depth in feet.

Total Depth (feet)	-	Depth to Water (feet)	x	0.04 gallons/foot for 1-inch well 0.16 gallons/foot for 2-inch well 0.65 gallons/foot for 4-inch well 1.47 gallons/foot for 6-inch well	=	Single Casing Volume (gallons)	x	Three Casing Volumes (gallons)
19.8	-	8.44	x	0.16	=	1.8	x 3	5.4

Purge Volume (gallons)	Time	Dissolved Oxygen (mg/L)	pH	Specific Conductivity (µS/cm)	Temp (°C)	ORP (mV)	Turbidity	Color	Purged Dry?	Comments
0	2:00	2.31	6.77	490	17.8	-209	Clear	None	No	Start purge
3	2:03	2.24	6.74	489	17.1	-220	"	"	"	
6	2:07	2.15	6.74	492	17.7	-222	"	"	"	
										Collect sample

Note observations of odor, sheen, and other signs of contamination under comments. Record turbidity as clear, translucent, opaque, cloudy, or turbid.

MONITORING WELL PURGE DATA

Project Name/Number: Eandi Metal Works / P279	Logged By: Matthew B. Hall
Property Location: 2440 East Eleventh Street, Oakland CA	Date: 2 March 2005
Well Number: MW3	Sample Type: Grab
Purging Equipment: Submersible pump	Depth to Water: 9.36
Sampling Equipment: Bailer with bottom-emptying device	Total Depth: 19.6
Measuring Point: Top of casing, north side	Odor:
Free Product: None	Sample Number: MW3 (2 Mar 05)
Comments: None	

Note obstructions, well damage, or other compromising features under comments. Record depth in feet.

Total Depth (feet)	-	Depth to Water (feet)	x	0.04 gallons/foot for 1-inch well 0.16 gallons/foot for 2-inch well 0.65 gallons/foot for 4-inch well 1.47 gallons/foot for 6-inch well	=	Single Casing Volume (gallons)		Three Casing Volumes (gallons)
19.6	-	9.36	x	0.16	=	1.6	x 3	4.8

Purge Volume (gallons)	Time	Dissolved Oxygen (mg/L)	pH	Specific Conductivity (µS/cm)	Temp (°C)	ORP (mV)	Turbidity	Color	Purged Dry?	Comments
0	1:24	2.40	6.67	684	18.4	-30	Turbid	Grey	No	
2.5	1:27	2.20	6.75	488	18.1	-120	Clear	NONE	NO	
5	1:30	2.25	6.76	497	18.1	-195	Clear	NONE	NO	
										Collect sample

Note observations of odor, sheen, and other signs of contamination under comments. Record turbidity as clear, translucent, opaque, cloudy, or turbid.

ATTACHMENT 2

Laboratory Reports and Chain-of-Custody
Forms

Streamborn Consulting Services

March 17, 2005

900 Sante Fe Avenue

Albany, CA 94706

Attn.: Matthew Hall

Project#: P279

Project: 2440 East Eleventh Street

Site: 2440 East Eleventh Street, Oakland, CA

Attached is our report for your samples received on 03/03/2005 17:40

This report has been reviewed and approved for release. Reproduction of this report is permitted only in its entirety.

Please note that any unused portion of the samples will be discarded after 04/17/2005 unless you have requested otherwise.

We appreciate the opportunity to be of service to you. If you have any questions, please call me at (925) 484-1919.

You can also contact me via email. My email address is: dsharma@stl-inc.com

Sincerely,



Dimple Sharma
Project Manager

Severn Trent Laboratories, Inc.

STL San Francisco * 1220 Quarry Lane, Pleasanton, CA 94566

Tel 925 484 1919 Fax 925 484 1096 * www.stl-inc.com * CA DHS ELAP# 2496

Fuel Oxygenates by 8260B

Streamborn Consulting Services

Attn.: Matthew Hall

900 Sante Fe Avenue

Albany, CA 94706

Phone: (510) 528-4234 Fax: (510) 528-2613

Project: P279

2440 East Eleventh Street

Received: 03/03/2005 17:40

Site: 2440 East Eleventh Street, Oakland, CA

Samples Reported

Sample Name	Date Sampled	Matrix	Lab #
MW1 (2 MAR 05)	03/02/2005 14:42	Water	1
MW2 (2 MAR 05)	03/02/2005 14:07	Water	2
MW3 (2 MAR 05)	03/02/2005 13:30	Water	3

Severn Trent Laboratories, Inc.

STL San Francisco * 1220 Quarry Lane, Pleasanton, CA 94566

Tel 925 484 1919 Fax 925 484 1096 * www.stl-inc.com * CA DHS ELAP# 2496

03/17/2005 15:59

Fuel Oxygenates by 8260B

Streamborn Consulting Services

Attn.: Matthew Hall

900 Sante Fe Avenue

Albany, CA 94706

Phone: (510) 528-4234 Fax: (510) 528-2613

Project: P279

2440 East Eleventh Street

Received: 03/03/2005 17:40

Site: 2440 East Eleventh Street, Oakland, CA

Prep(s):	5030B	Test(s):	8260B
Sample ID:	MW1 (2 MAR 05)	Lab ID:	2005-03-0204 - 1
Sampled:	03/02/2005 14:42	Extracted:	3/14/2005 13:53
Matrix:	Water	QC Batch#:	2005/03/14-01.64

Compound	Conc.	RL	Unit	Dilution	Analyzed	Flag
Gasoline	950	50	ug/L	1.00	03/14/2005 13:53	
tert-Butyl alcohol (TBA)	ND	5.0	ug/L	1.00	03/14/2005 13:53	
Methyl tert-butyl ether (MTBE)	0.80	0.50	ug/L	1.00	03/14/2005 13:53	
Di-isopropyl Ether (DIPE)	ND	1.0	ug/L	1.00	03/14/2005 13:53	
Ethyl tert-butyl ether (ETBE)	ND	0.50	ug/L	1.00	03/14/2005 13:53	
tert-Amyl methyl ether (TAME)	ND	0.50	ug/L	1.00	03/14/2005 13:53	
Benzene	1.9	0.50	ug/L	1.00	03/14/2005 13:53	
Toluene	0.60	0.50	ug/L	1.00	03/14/2005 13:53	
Ethylbenzene	19	0.50	ug/L	1.00	03/14/2005 13:53	
Total xylenes	4.0	1.0	ug/L	1.00	03/14/2005 13:53	
Surrogate(s)						
1,2-Dichloroethane-d4	103.0	73-130	%	1.00	03/14/2005 13:53	
Toluene-d8	93.9	81-114	%	1.00	03/14/2005 13:53	

Fuel Oxygenates by 8260B

Streamborn Consulting Services

Attn.: Matthew Hall

900 Sante Fe Avenue

Albany, CA 94706

Phone: (510) 528-4234 Fax: (510) 528-2613

Project: P279

2440 East Eleventh Street

Received: 03/03/2005 17:40

Site: 2440 East Eleventh Street, Oakland, CA

Prep(s):	5030B	Test(s):	8260B
Sample ID:	MW2 (2 MAR 05)	Lab ID:	2005-03-0204 - 2
Sampled:	03/02/2005 14:07	Extracted:	3/12/2005 16:18
Matrix:	Water	QC Batch#:	2005/03/12-01.66
Analysis Flag: L2 (See Legend and Note Section)			

Compound	Conc.	RL	Unit	Dilution	Analyzed	Flag
Gasoline	3700	250	ug/L	5.00	03/12/2005 16:18	
tert-Butyl alcohol (TBA)	ND	25	ug/L	5.00	03/12/2005 16:18	
Methyl tert-butyl ether (MTBE)	ND	2.5	ug/L	5.00	03/12/2005 16:18	
Di-isopropyl Ether (DIPE)	ND	5.0	ug/L	5.00	03/12/2005 16:18	
Ethyl tert-butyl ether (ETBE)	ND	2.5	ug/L	5.00	03/12/2005 16:18	
tert-Amyl methyl ether (TAME)	ND	2.5	ug/L	5.00	03/12/2005 16:18	
Benzene	ND	2.5	ug/L	5.00	03/12/2005 16:18	
Toluene	ND	2.5	ug/L	5.00	03/12/2005 16:18	
Ethylbenzene	340	2.5	ug/L	5.00	03/12/2005 16:18	
Total xylenes	22	5.0	ug/L	5.00	03/12/2005 16:18	
Surrogate(s)						
1,2-Dichloroethane-d4	101.5	73-130	%	5.00	03/12/2005 16:18	
Toluene-d8	94.8	81-114	%	5.00	03/12/2005 16:18	

Severn Trent Laboratories, Inc.

STL San Francisco * 1220 Quarry Lane, Pleasanton, CA 94566

Tel 925 484 1919 Fax 925 484 1096 * www.stl-inc.com * CA DHS ELAP# 2496

03/17/2005 15:59

Fuel Oxygenates by 8260B

Streamborn Consulting Services

Attn.: Matthew Hall

900 Sante Fe Avenue

Albany, CA 94706

Phone: (510) 528-4234 Fax: (510) 528-2613

Project: P279

2440 East Eleventh Street

Received: 03/03/2005 17:40

Site: 2440 East Eleventh Street, Oakland, CA

Batch QC Report

Prep(s): 5030B

Method Blank

MB: 2005/03/12-01:66-028

Water

Test(s): 8260B

QC Batch # 2005/03/12-01.66

Date Extracted: 03/12/2005 10:28

Compound	Conc.	RL	Unit	Analyzed	Flag
Gasoline	ND	50	ug/L	03/12/2005 10:28	
tert-Butyl alcohol (TBA)	ND	5.0	ug/L	03/12/2005 10:28	
Methyl tert-butyl ether (MTBE)	ND	0.5	ug/L	03/12/2005 10:28	
Di-isopropyl Ether (DIPE)	ND	1.0	ug/L	03/12/2005 10:28	
Ethyl tert-butyl ether (ETBE)	ND	0.5	ug/L	03/12/2005 10:28	
tert-Amyl methyl ether (TAME)	ND	0.5	ug/L	03/12/2005 10:28	
Benzene	ND	0.5	ug/L	03/12/2005 10:28	
Toluene	ND	0.5	ug/L	03/12/2005 10:28	
Ethylbenzene	ND	0.5	ug/L	03/12/2005 10:28	
Total xylenes	ND	1.0	ug/L	03/12/2005 10:28	
Surrogates(s)					
1,2-Dichloroethane-d4	91.2	73-130	%	03/12/2005 10:28	
Toluene-d8	92.0	81-114	%	03/12/2005 10:28	

Severn Trent Laboratories, Inc.

STL San Francisco * 1220 Quarry Lane, Pleasanton, CA 94566

Tel 925 484 1919 Fax 925 484 1096 * www.stl-inc.com * CA DHS ELAP# 2496

03/17/2005 15:59

Fuel Oxygenates by 8260B

Streamborn Consulting Services

Attn.: Matthew Hall

900 Sante Fe Avenue
Albany, CA 94706
Phone: (510) 528-4234 Fax: (510) 528-2613

Project: P279
2440 East Eleventh Street

Received: 03/03/2005 17:40

Site: 2440 East Eleventh Street, Oakland, CA

Batch QC Report

Prep(s): 5030B

Test(s): 8260B

Method Blank

Water

QC Batch # 2005/03/14-01.64

MB: 2005/03/14-01.64-042

Date Extracted: 03/14/2005 07:42

Compound	Conc.	RL	Unit	Analyzed	Flag
Gasoline	ND	50	ug/L	03/14/2005 07:42	
tert-Butyl alcohol (TBA)	ND	5.0	ug/L	03/14/2005 07:42	
Methyl tert-butyl ether (MTBE)	ND	0.5	ug/L	03/14/2005 07:42	
Di-isopropyl Ether (DIPE)	ND	1.0	ug/L	03/14/2005 07:42	
Ethyl tert-butyl ether (ETBE)	ND	0.5	ug/L	03/14/2005 07:42	
tert-Amyl methyl ether (TAME)	ND	0.5	ug/L	03/14/2005 07:42	
Benzene	ND	0.5	ug/L	03/14/2005 07:42	
Toluene	ND	0.5	ug/L	03/14/2005 07:42	
Ethylbenzene	ND	0.5	ug/L	03/14/2005 07:42	
Total xylenes	ND	1.0	ug/L	03/14/2005 07:42	
Surrogates(s)					
1,2-Dichloroethane-d4	100.6	73-130	%	03/14/2005 07:42	
Toluene-d8	95.8	81-114	%	03/14/2005 07:42	

Severn Trent Laboratories, Inc.

03/17/2005 15:59

STL San Francisco * 1220 Quarry Lane, Pleasanton, CA 94566
Tel 925 484 1919 Fax 925 484 1096 * www.stl-inc.com * CA DHS ELAP# 2496

Fuel Oxygenates by 8260B

Streamborn Consulting Services

Attn.: Matthew Hall

900 Sante Fe Avenue

Albany, CA 94706

Phone: (510) 528-4234 Fax: (510) 528-2613

Project: P279

2440 East Eleventh Street

Received: 03/03/2005 17:40

Site: 2440 East Eleventh Street, Oakland, CA

Batch QC Report

Prep(s): 5030B

Test(s): 8260B

Laboratory Control Spike

Water

QC Batch # 2005/03/12-01.66

LCS 2005/03/12-01.66-002

Extracted: 03/12/2005

Analyzed: 03/12/2005 10:02

LCSD

Compound	Conc. ug/L		Exp.Conc.	Recovery %		RPD	Ctrl.Limits %		Flags	
	LCS	LCSD		LCS	LCSD		%	Rec.	RPD	LCS
Methyl tert-butyl ether (MTBE)	21.1		25.0	84.4			65-165	20		
Benzene	20.3		25.0	81.2			69-129	20		
Toluene	25.7		25.0	102.8			70-130	20		
Surrogates(s)										
1,2-Dichloroethane-d4	438		500	87.6			73-130			
Toluene-d8	466		500	93.2			81-114			

Severn Trent Laboratories, Inc.

STL San Francisco * 1220 Quarry Lane, Pleasanton, CA 94566

Tel 925 484 1919 Fax 925 484 1096 * www.stl-inc.com * CA DHS ELAP# 2496

03/17/2005 15:59

Fuel Oxygenates by 8260B

Streamborn Consulting Services

Attn.: Matthew Hall

900 Sante Fe Avenue

Albany, CA 94706

Phone: (510) 528-4234 Fax: (510) 528-2613

Project: P279

2440 East Eleventh Street

Received: 03/03/2005 17:40

Site: 2440 East Eleventh Street, Oakland, CA

Batch QC Report

Prep(s): 5030B

Test(s): 8260B

Laboratory Control Spike

Water

QC Batch # 2005/03/14-01.64

LCS 2005/03/14-01.64-020

Extracted: 03/14/2005

Analyzed: 03/14/2005 07:20

LCSD

Compound	Conc. ug/L		Exp.Conc.	Recovery %		RPD	Ctrl.Limits %		Flags	
	LCS	LCSD		LCS	LCSD		%	Rec.	RPD	LCS
Methyl tert-butyl ether (MTBE)	25.9		25.0	103.6			65-165	20		
Benzene	26.2		25.0	104.8			69-129	20		
Toluene	29.4		25.0	117.6			70-130	20		
Surrogates(s)										
1,2-Dichloroethane-d4	478		500	95.6			73-130			
Toluene-d8	492		500	98.4			81-114			

Severn Trent Laboratories, Inc.

STL San Francisco * 1220 Quarry Lane, Pleasanton, CA 94566

Tel 925 484 1919 Fax 925 484 1096 * www.stl-inc.com * CA DHS ELAP# 2496

03/17/2005 15:59

Fuel Oxygenates by 8260B

Streamborn Consulting Services

Attn.: Matthew Hall

900 Sante Fe Avenue

Albany, CA 94706

Phone: (510) 528-4234 Fax: (510) 528-2613

Project: P279

2440 East Eleventh Street

Received: 03/03/2005 17:40

Site: 2440 East Eleventh Street, Oakland, CA

Batch QC Report

Prep(s): 5030B

Test(s): 8260B

Matrix Spike (MS / MSD)

Water

QC Batch # 2005/03/12-01.66

MS/MSD

Lab ID: 2005-03-0182 - 001

MS: 2005/03/12-01.66-053

Extracted: 03/12/2005

Analyzed: 03/12/2005 12:53

Dilution: 1.00

MSD: 2005/03/12-01.66-019

Extracted: 03/12/2005

Analyzed: 03/12/2005 13:19

Dilution: 1.00

Compound	Conc. ug/L			Spk.Level ug/L	Recovery %			Limits %		Flags	
	MS	MSD	Sample		MS	MSD	RPD	Rec.	RPD	MS	MSD
Methyl tert-butyl ether	24.8	26.0	ND	25.0	99.2	104.0	4.7	65-165	20		
Benzene	23.4	24.5	ND	25.0	93.6	98.0	4.6	69-129	20		
Toluene	28.8	29.4	ND	25.0	115.2	117.6	2.1	70-130	20		
Surrogate(s)											
1,2-Dichloroethane-d4	465	458		500	93.0	91.6		73-130			
Toluene-d8	495	491		500	99.0	98.2		81-114			

Severn Trent Laboratories, Inc.

STL San Francisco * 1220 Quarry Lane, Pleasanton, CA 94566

Tel 925 484 1919 Fax 925 484 1096 * www.stl-inc.com * CA DHS ELAP# 2496

03/17/2005 15:59

Fuel Oxygenates by 8260B

Streamborn Consulting Services

Attn.: Matthew Hall

900 Sante Fe Avenue

Albany, CA 94706

Phone: (510) 528-4234 Fax: (510) 528-2613

Project: P279

2440 East Eleventh Street

Received: 03/03/2005 17:40

Site: 2440 East Eleventh Street, Oakland, CA

Batch QC Report

Prep(s): 5030B

Test(s): 8260B

Matrix Spike (MS / MSD)

Water

QC Batch # 2005/03/14-01.64

MS/MSD

Lab ID: 2005-03-0045 - 007

MS: 2005/03/14-01.64-009

Extracted: 03/14/2005

Analyzed: 03/14/2005 10:09

Dilution: 1.00

MSD: 2005/03/14-01.64-032

Extracted: 03/14/2005

Analyzed: 03/14/2005 10:32

Dilution: 1.00

Compound	Conc. ug/L		Spk.Level	Recovery %			Limits %		Flags		
	MS	MSD		Sample	ug/L	MS	MSD	RPD	Rec.	RPD	MS
Methyl tert-butyl ether	21.8	24.5	ND	25.0	87.2	98.0	11.7	65-165	20		
Benzene	20.7	24.4	ND	25.0	82.8	97.6	16.4	69-129	20		
Toluene	22.9	26.7	ND	25.0	91.6	106.8	15.3	70-130	20		
Surrogate(s)											
1,2-Dichloroethane-d4	489	480		500	97.8	96.0		73-130			
Toluene-d8	475	485		500	95.1	97.0		81-114			

Severn Trent Laboratories, Inc.

STL San Francisco * 1220 Quarry Lane, Pleasanton, CA 94566

Tel 925 484 1919 Fax 925 484 1096 * www.stl-inc.com * CA DHS ELAP# 2496

03/17/2005 15:59

Fuel Oxygenates by 8260B

Streamborn Consulting Services

Attn.: Matthew Hall

900 Sante Fe Avenue

Albany, CA 94706

Phone: (510) 528-4234 Fax: (510) 528-2613

Project: P279

2440 East Eleventh Street

Received: 03/03/2005 17:40

Site: 2440 East Eleventh Street, Oakland, CA

Legend and Notes

Analysis Flag

L2

Reporting limits were raised due to high level of analyte present in the sample.

2005-03-0204

10243

STREAMBORN
Chain-of-Custody Form

Project Name: 2440 East Eleventh Street	Project Location: 2440 East Eleventh Street, Oakland CA	Project Number: P279
Sampler: Matthew B. Hall	Laboratory: Severn Trent Laboratories	Laboratory Number:

Sample Designation	Date	Time	Matrix			Type	Containers		Preservative (in addition to ice)	Field Filtration	Turnaround			Analyses			Sampler Comments	Laboratory Comments
			Soil	Water	Vapor	Grab	Composite	Quantity			Type	48-Hour	5-Working Days	10-Working Days	TPH-gas/TEX/fuel hydrocarbons (EPA 8260)			
MW1 (2-Mar-05)	2-Mar-05	2:42		x		x	3	40 mL VOA	HCl	None			x	x				
MW2 (2-Mar-05)	2-Mar-05	2:01		x		x	3	40 mL VOA	HCl	None			x	x				
MW3 (2-Mar-05)	2-Mar-05	1:30		x		x	3	40 mL VOA	HCl	None			x	x				

Note: Sampler and laboratory to observe preservative condition, integrity, etc. of samples and record (under "Comments") any exceptions from standard protocols.

Relinquished By: 	Received By: 	Date: 3-3-05	Time: 0935
Relinquished By: 	Received By: 	Date: 3-3-05	Time: 1740

STREAMBORN Mail: PO Box 8330, Berkeley CA 94707-8330 Office: 900 Santa Fe Ave, Albany CA 94706 510-528-4234 Fax: 528-2613

Report results to information@streamborn.com

2°C