



January 20, 2011

Jerry Wickham, PG
Alameda County Health Care Services Agency
Environmental Health Services
1131 Harbor Bay Parkway, Suite 250
Alameda, CA 94502-6577

RECEIVED

4:52 pm, Feb 03, 2011

Alameda County
Environmental Health

Re: Well decommissioning at former Nestlé facility located at 1310 14th Street, Oakland, California

Dear Mr. Wickham:

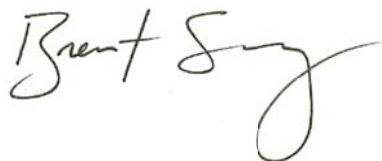
On behalf of Nestlé USA, Inc. (Nestlé), Environmental Cost Management, Inc. (ECM) has prepared this letter to document monitoring well decommissioning activities at the former Carnation Dairy Facility in Oakland California. Attached to this letter are copies of the well permit for destruction activities from Alameda County and State of California Well Completion Reports numbers e0122318 through e0122335 (Attachment 1). Prior to commencement of field activities, ECM notified Underground Service Alert (USA) and received USA California permit number 360111.

On 6 and 7 December 2010, ECM supervised the decommissioning of sixteen wells under Alameda County Public Works Agency (ACPWA) Well Permits numbered W2010-0888 to W2010-0904 (Attachment 2). Cascade Drilling of Rancho Cordova, California (C-57 license # 938110) performed the well destructions. The wells destroyed included PR-21, PR-36, PR-37, PR-41, PR-42, PR-43, RW-1, RW-2, PR-76, MW-25, MW-26, MW-28, MW-29, MW-30, MW-32, and MW-100 (Figure 1). Well MW-27 was designated missing by ACPWA after ECM used ground-penetrating radar and excavation of street asphalt and surfacing material to a depth of approximately 12 inches, but was unsuccessful at locating the well (e-mail from ACPWA is attached).

Table 1 presents a list of the decommissioned wells and their construction details. The well destruction process consisted of pressure grouting each well with tremmie cement (type I/II) slurry from the bottom of each well up to 2 feet below ground surface. A representative of ACPWA inspected and approved the well destruction and grouting activities. The well covers and vaults were removed, and the remainder of each well was filled with aggregate cement. Department of Water Resources (DWR) well completion forms were completed and the original copies mailed to the ACPWA under separate cover by the driller on December 14, 2010.

If you have any questions or comments, please do not hesitate to contact me at (415) 282-1979

Best Regards,
Environmental Cost Management, Inc.



Brent Searcy, P.E.
Project Manager/Senior Engineer

Encl:

Figure 1	Location of Wells Destroyed
Table 1	Well Construction Details
Attachment 1	Email from ACPWA re: missing well MW-27
Attachment 2:	State of California Department of Water Resources – Well Completion Report

Cc: Ken Cheitlin, Hall Equities Group
Jennifer Costanza, Nestlé USA
Michael Desso, Nestlé USA
Binayak Acharya, ECM
Nestlé USA, File

*Well Decommissioning at former Nestlé facility located at
1310 14th Street, Oakland, California*

January 14, 2011

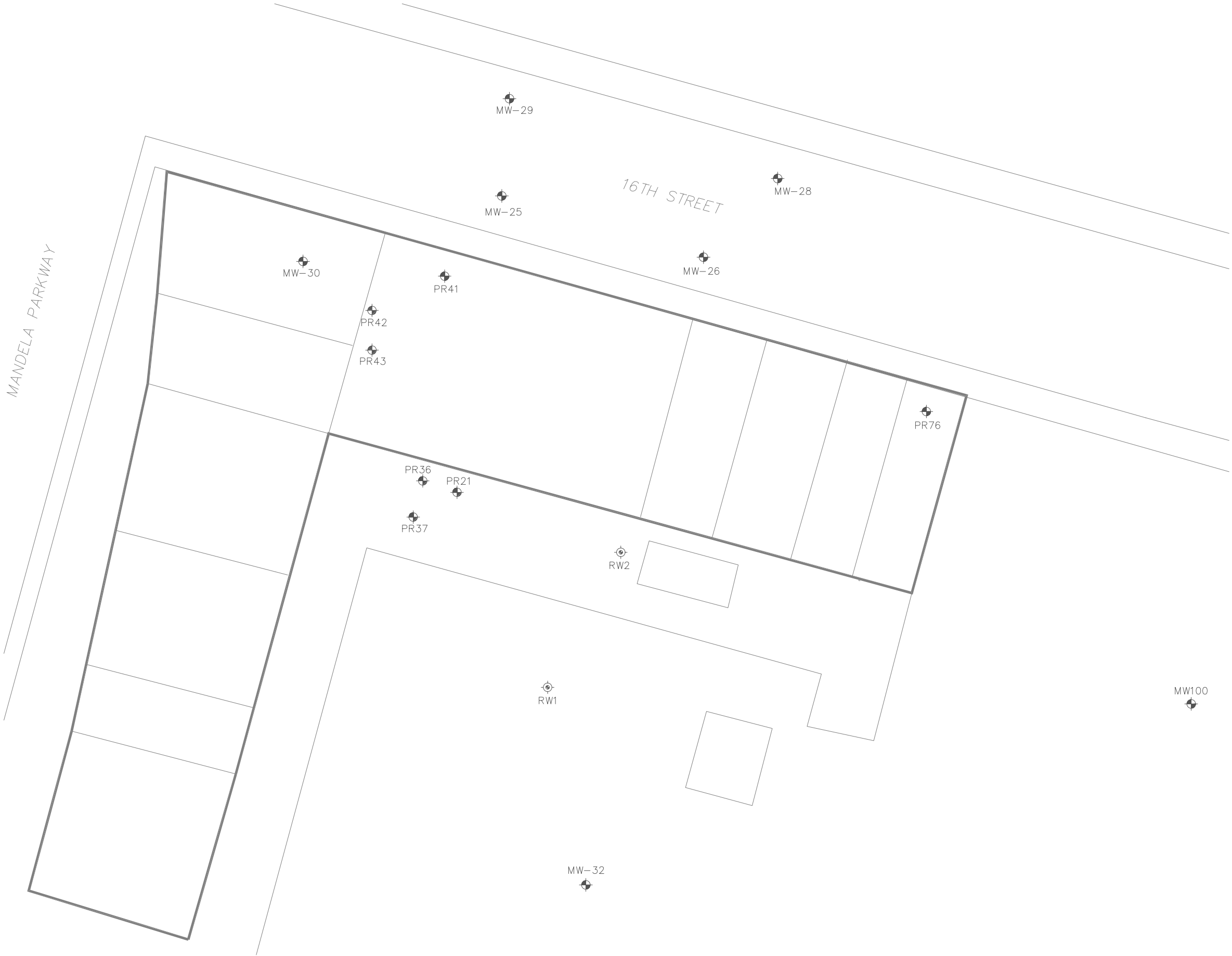
Perjury Statement

I declare, under penalty of perjury, that the information and/or recommendations contained in the attached document or report is true and correct to the best of my knowledge.

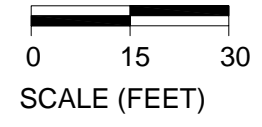
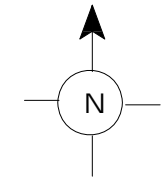


Michael Desso
Director Environmental & Safety
Nestlé USA

Project: Nestle-Oakland
Proj. Manager: B. Acharya
Date drafted: 12/9/10
Drafter: J. Plummer
Chkd by: B. Searcy
File Path:



LEGEND:
WELLS PROPOSED FOR DESTRUCTION



Former Nestle Oakland Facility
1310 14th Street
Oakland, California - 94607

 **ENVIRONMENTAL COST MANAGEMENT, INC.**
Managing Cost and Liability
3525 Hyland Avenue, Suite 200 • Costa Mesa, CA 92626
Tel: (714) 662-2759 • Fax: (714) 662-2758

Wells Destroyed
December 11, 2010

Figure
1

Table 1
Wells Destroyed
1310 14th Street, Oakland, CA
December 2010

Well Type	Well Name	Casing Diameter (in.)	Total Casing Depth (ft. bgs)	Top of Screen (ft. bgs)	Bottom of Screen (ft. bgs)	Length of Screened Interval (ft.)	Screen Slot Size (in.)	Filter Pack Type	Seal Type	Seal Top Depth (ft. bgs)	Seal Base Depth (ft. bgs)
Groundwater Monitoring Well	PR21	2	15	8	15	7	0.125	CAS	Bentonite	4	6
Groundwater Monitoring Well	PR-36	2	15	8	15	7	0.125	CAS	Bentonite	4	6
Groundwater Monitoring Well	PR-37	2	15	8	15	7	0.125	CAS	Bentonite	4	6
Groundwater Monitoring Well	PR-41	2	15	8	15	7	0.125	CAS	Bentonite	4	6
Groundwater Monitoring Well	PR-42	2	15	5	15	10	0.03	#3 Sand	Bentonite	3	4
Groundwater Monitoring Well	PR-43	2	15	5	15	10	0.03	#3 Sand	Bentonite	3	4
Groundwater Monitoring Well	RW-1	12	13	NA	NA	NA	NA	NA	NA	NA	NA
Groundwater Monitoring Well	RW-2	12	14	NA	NA	NA	NA	NA	NA	NA	NA
Groundwater Monitoring Well	PR-76	2.0	15.0	5.0	15.0	10.0	0.030	#3 Sand	Bentonite	3.0	4.0
Groundwater Monitoring Well	MW25	4.0	22.5	7.5	22.5	15.0	0.020	#2/16 Sand	Bentonite	5.0	6.5
Groundwater Monitoring Well	MW26	4.0	25.0	10.0	25.0	15.0	0.020	#2/16 Sand	Bentonite	7.5	9.0
Groundwater Monitoring Well	MW27*	4.0	24.5	9.0	24.0	15.0	0.020	#2/16 Sand	Bentonite	6.5	8.0
Groundwater Monitoring Well	MW28	4.0	27.0	9.0	27.0	18.0	0.020	#2/16 Sand	Bentonite	6.5	8.0
Groundwater Monitoring Well	MW29	4.0	25.0	9.0	25.0	16.0	0.020	#2/16 Sand	Bentonite	6.5	8.0
Groundwater Monitoring Well	MW30	2.0	15.6	5.8	15.6	9.9	NR	NR	NR	NR	NR
Groundwater Monitoring Well	MW32	4.0	23.3	3.6	23.3	19.7	NR	NR	NR	NR	NR
Groundwater Monitoring Well	MW100	2.0	15.0	5.0	15.0	10.0	0.010	#2/12 Sand	Bentonite	2.0	4.0

* Well not found

Attachment 1

Joseph Plummer

From: Hamlin, Vicky <vickyh@acpwa.org>
Sent: Friday, December 17, 2010 9:50 AM
To: Joseph Plummer
Subject: W2010-0888 to W2010-0904, 1310 14th Street. Oakland CA, 94607 Former Carnation Dairy Facility

Joseph, we will classify MW27 as a lost well, and I acknowledge that you used best efforts to find it, including jackhammer around the subject location, which I witnessed on the day of inspection. You confirmed that you also used GPR and underground survey to locate MW27, and sent me copies of old boring logs and sampling logs. Thank you for your help.

Victoria Hamlin
ESA
Alameda County Public Works Agency
Water Resources Section
399 Elmhurst Street
Hayward, CA 94544
Ph: 510-670-5443
Fax: 510-782-1939
vickyh@acpwa.org
www.acgov.org/pwa/wells

Attachment 2

CONFIDENTIAL

STATE OF CALIFORNIA DWR
WELL COMPLETION REPORT
(WELL LOGS)

REMOVED

CONFIDENTIAL

STATE OF CALIFORNIA DWR
WELL COMPLETION REPORT
(WELL LOGS)

REMOVED

CONFIDENTIAL

**STATE OF CALIFORNIA DWR
WELL COMPLETION REPORT
(WELL LOGS)**

REMOVED

CONFIDENTIAL

STATE OF CALIFORNIA DWR
WELL COMPLETION REPORT
(WELL LOGS)

REMOVED

CONFIDENTIAL

STATE OF CALIFORNIA DWR
WELL COMPLETION REPORT
(WELL LOGS)

REMOVED

CONFIDENTIAL

STATE OF CALIFORNIA DWR
WELL COMPLETION REPORT
(WELL LOGS)

REMOVED

CONFIDENTIAL

STATE OF CALIFORNIA DWR
WELL COMPLETION REPORT
(WELL LOGS)

REMOVED

CONFIDENTIAL

STATE OF CALIFORNIA DWR
WELL COMPLETION REPORT
(WELL LOGS)

REMOVED

CONFIDENTIAL

**STATE OF CALIFORNIA DWR
WELL COMPLETION REPORT
(WELL LOGS)**

REMOVED

CONFIDENTIAL

STATE OF CALIFORNIA DWR
WELL COMPLETION REPORT
(WELL LOGS)

REMOVED

CONFIDENTIAL

STATE OF CALIFORNIA DWR
WELL COMPLETION REPORT
(WELL LOGS)

REMOVED

CONFIDENTIAL

STATE OF CALIFORNIA DWR
WELL COMPLETION REPORT
(WELL LOGS)

REMOVED

CONFIDENTIAL

STATE OF CALIFORNIA DWR
WELL COMPLETION REPORT
(WELL LOGS)

REMOVED

CONFIDENTIAL

STATE OF CALIFORNIA DWR
WELL COMPLETION REPORT
(WELL LOGS)

REMOVED

CONFIDENTIAL

**STATE OF CALIFORNIA DWR
WELL COMPLETION REPORT
(WELL LOGS)**

REMOVED

CONFIDENTIAL

STATE OF CALIFORNIA DWR
WELL COMPLETION REPORT
(WELL LOGS)

REMOVED