



Atlantic Richfield Company
(a BP affiliated company)

P.O. Box 1257
San Ramon, CA 94583
Phone: (925) 275-3801
Fax: (925) 275-3815

27 July 2007

Re: Second Quarter 2007 Ground-Water Monitoring Report
Former BP Station # 11132
3201 35th Avenue
Oakland, California
ACEH Case #RO0000014

“I declare, that to the best of my knowledge at the present time, that the information and/or recommendations contained in the attached document are true and correct.”

Submitted by:

Paul Supple
Environmental Business Manger

RECEIVED

2:09 pm, Aug 01, 2007

Alameda County
Environmental Health



bp



A BP affiliated company

Second Quarter 2007 Ground-Water Monitoring Report

Former BP Station #11132

3201 35th Avenue

Oakland, California

Prepared for

Mr. Paul Supple
Environmental Business Manager
Atlantic Richfield Company
P.O. Box 1257
San Ramon, California 94583

Prepared by



1324 Mangrove Avenue, Suite 212
Chico, California 95926
(530) 566-1400
www.broadbentinc.com

27 July 2007

Project No. 06-08-655

27 July 2007

Project No. 06-08-655

Atlantic Richfield Company
P.O. Box 1257
San Ramon, California 94583
Submitted via ENFOS

Attn.: Mr. Paul Supple

Re: Second Quarter 2007 Ground-Water Monitoring Report, Former BP Station #11132,
3201 35th Avenue, Oakland, Alameda County, California; ACEH Case #RO0000014

Dear Mr. Supple:

Provided herein is the *Second Quarter 2007 Ground-Water Monitoring Report* for Former BP Station #11132 (herein referred to as Station #11132) located at 3201 35th Avenue, Oakland, California (Site). This report presents results of the ground-water monitoring and sampling conducted at Station #11132 during the Second Quarter of 2007.

Should you have questions regarding the work performed or results obtained, please do not hesitate to contact us at (530) 566-1400.

Sincerely,

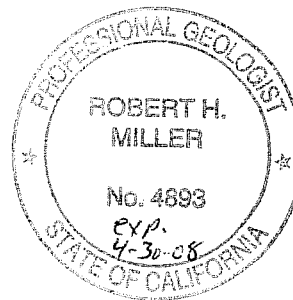
BROADBENT & ASSOCIATES, INC.



Thomas A. Venus, P.E.
Senior Engineer



Robert H. Miller, P.G., C.HG.
Principal Hydrogeologist



Enclosures

cc: Mr. Steven Plunkett, Alameda County Environmental Health (Submitted via ACEH ftp site)
Ms. Shelby Lathrop, ConocoPhillips (Submitted via WebXtender)
Electronic copy uploaded to GeoTracker

STATION #11132 QUARTERLY GROUND-WATER MONITORING REPORT

Facility: #11132	Address:	3201 35 th Avenue, Oakland, California
Environmental Business Manager:		Mr. Paul Supple
Consulting Co./Contact Persons:		Broadbent & Associates, Inc.(BAI)/Rob Miller & Tom Venus (530) 566-1400
Consultant Project No.:		06-08-655
Primary Agency/Regulatory ID No.:		Alameda County Environmental Health (ACEH) ACEH Case # RO0000014

WORK PERFORMED THIS QUARTER (Second Quarter 2007):

1. Prepared and submitted First Quarter 2007 Ground-Water Monitoring Report.
2. Conducted ground-water monitoring/sampling for Second Quarter 2007. Work performed by Stratus Environmental, Inc. (Stratus) on 22 May 2007.
3. Performed monthly free product (FP) gauging and utilized absorbent socks as an interim remedial action measure.

WORK PROPOSED FOR NEXT QUARTER (Third Quarter 2007):

1. Prepared and submitted this Second Quarter 2007 Ground-Water Monitoring Report (contained herein).
2. Conduct quarterly ground-water monitoring/sampling for Third Quarter 2007.
3. Perform monthly FP gauging and bailing and utilize absorbent socks as an interim remedial action measure.

QUARTERLY RESULTS SUMMARY:

Current phase of project:	Ground-Water Monitoring/Sampling/FP Bailing
Frequency of ground-water monitoring:	Quarterly: MW-1 through MW-10 and RW-1
Frequency of ground-water sampling:	Quarterly: MW-1, MW-2, MW-5, MW-8, MW-9, MW-10, and RW-1 Annually (1Q): MW-3, MW-4, MW-6, and MW-7
Is free product (FP) present on-site:	Yes (MW-1, RW-1)
FP recovered this quarter:	Unknown volume within absorbent socks
Cumulative FP recovered since 1990:	52.774 gallons
Current remediation techniques:	Interim FP Bailing/Absorbent socks
Depth to ground water (below TOC):	15.11 ft (MW-6) to 20.16 ft (MW-4)
General ground-water flow direction:	South
Approximate hydraulic gradient:	0.005 ft/ft

DISCUSSION:

Second quarter ground-water monitoring was conducted at Former BP Station #11132 by Stratus on 22 May 2007. Water levels were gauged in 11 wells at the Site. Sheen was noted in wells MW-8, MW-9 and MW-10. Separate phase hydrocarbons (SPH, or Free Product – FP) were observed in wells MW-1 (0.01 ft) and RW-1 (unable to measure product thickness). No other irregularities were noted during water level gauging. Depth to water measurements across the Site ranged from 15.11 ft at MW-6 to 20.16 ft at MW-4. Resulting ground-water surface elevations ranged from 150.37 ft above mean sea level at MW-3 to 149.68 ft at MW-7. Second quarter 2007 ground-water elevations were within the historic minimum and maximum ranges for each well. These ground-water level elevations yielded a

potentiometric ground-water flow direction and gradient of approximately 0.005 ft/ft to the south, which is consistent with historical data (see Table 3). A map of the site showing ground-water elevation contours with flow direction arrow is provided as Drawing 1. Station #11132 ground-water elevation data is summarized in Table 1. Field data sheets from ground-water monitoring at Station #11132 are provided in Appendix A.

Consistent with the current ground-water sampling schedule, water samples were collected from wells MW-2, MW-5, MW-8, MW-9, and MW-10. Wells MW-1 and RW-1 were not sampled as separate phase hydrocarbons were present (See discussion below). No other irregularities were reported during sampling. Samples were submitted under chain-of-custody protocol to Test America Analytical Testing Corporation (Morgan Hill, California), for analysis of Gasoline Range Organics (GRO, C4-12) by the LUFT GCMS Method; for Benzene, Toluene, Ethylbenzene, and Total Xylenes (BTEX) by EPA Method 8260B; and tert-Amyl methyl ether (TAME), tert-Butyl alcohol (TBA), Di-isopropyl ether (DIPE), 1,2-Dibromomethane (EDB), 1,2-Dichloroethane (1,2-DCA), Ethanol, Ethyl tert-butyl ether (ETBE), and Methyl tert-butyl ether (MTBE) by EPA Method 8260B. No significant irregularities were encountered during laboratory analysis of the samples. Ground-water sampling field data sheets and the laboratory analytical report, including chain-of-custody documentation, are provided in Appendix A.

Gasoline range organics (GRO) were detected above the laboratory reporting limit in each of the five wells sampled at concentrations up to 91,000 micrograms per liter ($\mu\text{g/L}$) in well MW-2. Benzene was detected above the laboratory reporting limit in each of the five wells sampled at concentrations up to 15,000 $\mu\text{g/L}$ in well MW-2. Toluene was detected above the laboratory reporting limit in four of the five wells sampled at concentrations up to 8,700 $\mu\text{g/L}$ in well MW-2. Ethylbenzene was detected above the laboratory reporting limit in each of the five wells sampled at concentrations up to 4,700 $\mu\text{g/L}$ in well MW-2. Total Xylenes were detected above the laboratory reporting limit in each of the five wells sampled at concentrations up to 20,000 $\mu\text{g/L}$ in well MW-2. MTBE was detected above the laboratory reporting limit in four of the five wells sampled at concentrations up to 1,000 $\mu\text{g/L}$ in well MW-2. The remaining fuel additives and oxygenates were not detected above their laboratory reporting limits in the wells sampled this quarter. Detected analyte concentrations were within the historic minimum and maximum ranges recorded for each well. Historic laboratory analytical results are summarized in Table 1 and Table 2. The most recent GRO, Benzene, and MTBE concentrations are also presented in Drawing 1. A copy of the laboratory analytical report, including chain-of-custody documentation, is provided in Appendix A. Ground-water monitoring data (GEO_WELL) and laboratory analytical results (EDF) were uploaded to the GeoTracker AB2886 database. Upload confirmation pages are provided in Appendix B.

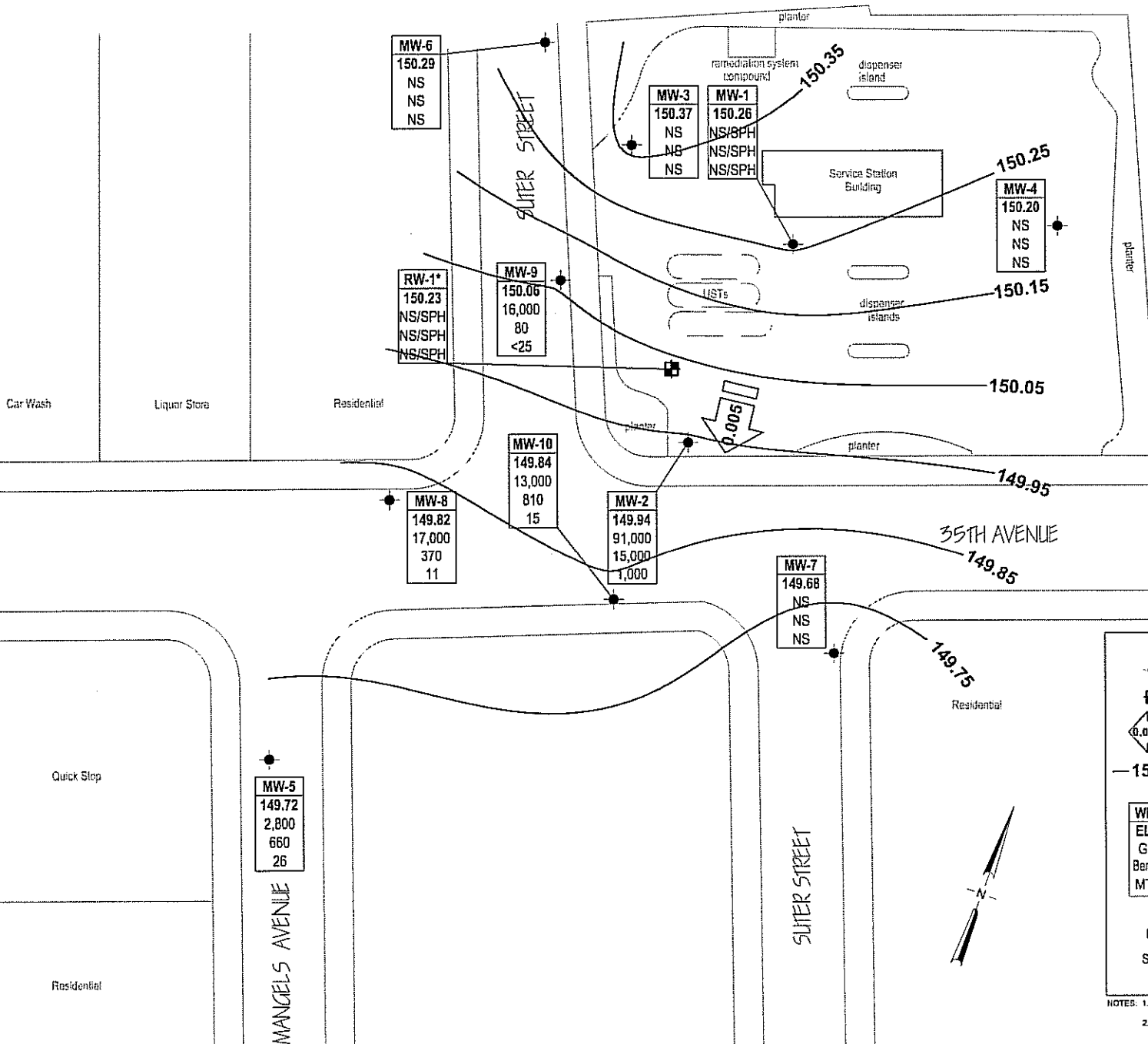
Separate phase hydrocarbons (SPH, or Free Product – FP) were monitored and removed during each month of Second Quarter 2007. On 10 April 2007, FP thickness was measured in wells MW-1 (0.15 ft) and RW-1 (0.10 ft), but not wells MW-8 through MW-10. Absorbent socks were replaced within wells MW-1 and RW-1 during this visit. On 22 May 2007, FP thickness was measured in wells MW-1 (0.01 ft), RW-1 (unable to measure FP thickness), MW-8 (sheen), MW-9 (sheen), and MW-10 (sheen). New absorbent socks were installed into wells MW-1 and RW-1. On 26 June 2007, FP thickness was measured in wells MW-1 (0.05 ft), MW-8 (no sheen/FP), MW-9 (no sheen/FP), MW-10 (sheen) and RW-1 (sheen). Absorbent socks were removed from wells MW-1 and RW-1. Approximately one gallon of FP/water mixture was removed from wells MW-1, MW-10, and RW-1, totaling three gallons of FP/water mixture removed from the Site during Second Quarter 2007. Stratus will investigate the use of passive oil skimmers in wells MW-1 and RW-1. Passive oil skimmers will enable quantification of the volume of FP removed, as well as remove FP full-time. Total cumulative FP removed to date at the Site is approximately 52.774 gallons, but this does not include the unknown volume absorbed within the socks that were removed and replaced each month during this quarter. Table 4 contains a summary of FP removal data. Copies of the field data sheets for site visits conducted this quarter are included within Appendix A.

CLOSURE:

The findings presented in this report are based upon: observations of Stratus field personnel (see Appendix A), the points investigated, and results of laboratory tests performed by Test America (Morgan Hill, California). Our services were performed in accordance with the generally accepted standard of practice at the time this report was written. No other warranty, expressed or implied was made. This report has been prepared for the exclusive use of Atlantic Richfield Company. It is possible that variations in soil or ground-water conditions could exist beyond points explored in this investigation. Also, changes in site conditions could occur in the future due to variations in rainfall, temperature, regional water usage, or other factors.

ATTACHMENTS:

- Drawing 1. Ground-Water Elevation Contour and Analytical Summary Map, 22 May 2007, Former BP Service Station #11132, 3201 35th Avenue, Oakland, California
- Table 1. Summary of Ground-Water Monitoring Data: Relative Water Elevations and Laboratory Analyses, Station #11132, 3201 35th Ave., Oakland, CA
- Table 2. Summary of Fuel Additives Analytical Data, Station #11132, 3201 35th Ave., Oakland, CA
- Table 3. Historical Ground-Water Flow Direction and Gradient, Station #11132, 3201 35th Ave., Oakland, CA
- Table 4. Free Product Removal, Former BP Service Station #11132, 3201 35th Avenue, Oakland, CA
- Appendix A. Stratus Ground-Water Sampling Data Package (Includes Field Data Sheets and Laboratory Analytical Report with Chain-of-Custody Documentation)
- Appendix B. GeoTracker Upload Confirmation



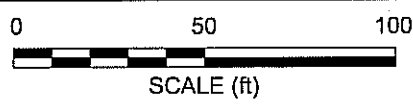
LEGEND

- Existing monitoring well
- ⊕ Ground-water recovery well
- ← 0.005 Ground-water flow direction and gradient (ft/ft)
- 150.05 Ground-water elevation contour (Feet above MSL)

WELL	Well designation
ELEV	Ground-water elevation (ft above MSL)
GRO	GRO, Benzene and MTBE concentration in micrograms per liter (µg/L)
Benzene	
MTBE	

- < Not detected at or above reporting limits
- NS Not sampled
- SPH Separate Phase Hydrocarbons Present
- Elevation not used for contouring

NOTES: 1. SITE MAP ADAPTED FROM CAMBRIA ENVIRONMENTAL FIGURES. SITE DIMENSIONS AND FIGURES FACILITY LOCATIONS NOT VERIFIED.
 2. WELL MW-7 AND SUPER STREET LOCATIONS HAVE BEEN CORRECTED FROM PREVIOUS MAPS.



BROADBENT & ASSOCIATES, INC.
 ENGINEERING, WATER RESOURCES & ENVIRONMENTAL
 1324 Mangrove Ave. Suite 212, Chico, California 95926
 Project No.: 06-08-655 Date: 7/19/07

Former BP Service Station #11132
 3201 35th Avenue
 Oakland, California

Ground-Water Elevation Contours
 and Analytical Summary Map
 22 May 2007

Drawing
1

Table 1. Summary of Ground-Water Monitoring Data: Relative Water Elevations and Laboratory Analyses
Station #11132, 3201 35th Ave, Oakland, CA

Well and Sample Date	P/NP	TOC Elevation (feet msl)	Depth to Water (feet bgs)	Product Thickness (feet)	Water Level Elevation (feet msl)	Concentrations in (µg/L)						(mg/L) DO	Lab	pH	Comments
						GRO/TPHg	Benzene	Toluene	Ethyl-Benzene	Total Xylenes	MTBE				
MW-1															
7/9/1990	--	169.75	--	0.22	--	--	--	--	--	--	--	--	--	--	
12/21/1990	--	169.75	--	0.58	--	--	--	--	--	--	--	--	--	--	
3/7/1991	--	169.75	20.59	0	149.16	--	--	--	--	--	--	--	--	--	
4/1/1991	--	169.75	16.51	0.15	153.09	--	--	--	--	--	--	--	--	--	
6/27/1991	--	169.75	--	0.18	--	--	--	--	--	--	--	--	--	--	
9/27/1991	--	169.75	--	0.27	--	--	--	--	--	--	--	--	--	--	
12/18/1991	--	169.75	--	0.28	--	--	--	--	--	--	--	--	--	--	
7/3/1992	--	169.75	22.30	0.27	147.18	--	--	--	--	--	--	--	--	--	
10/5/1992	--	169.75	23.98	0.24	145.53	--	--	--	--	--	--	--	--	--	
1/13/1993	--	169.75	17.03	0.24	152.48	--	--	--	--	--	--	--	--	--	
4/23/1993	--	169.75	18.10	0.42	151.23	--	--	--	--	--	--	--	--	--	
7/12/1993	--	169.75	22.02	0.49	147.24	--	--	--	--	--	--	--	--	--	
10/21/1993	--	169.75	25.12	1.09	143.54	--	--	--	--	--	--	--	--	--	
1/21/1994	--	169.75	23.02	0.76	145.97	--	--	--	--	--	--	--	--	--	
4/20/1994	--	169.75	24.54	1.8	143.41	--	--	--	--	--	--	--	--	--	
8/1/1994	--	169.75	24.11	0.35	145.29	--	--	--	--	--	--	--	--	--	
12/23/1994	--	169.75	18.19	--	151.56	--	--	--	--	--	--	--	--	--	
1/26/1995	--	169.75	16.25	1.1	152.40	--	--	--	--	--	--	--	--	--	
6/8/95-6/28/95	--	169.75	--	1.25	145.63	--	--	--	--	--	--	--	--	--	
6/8/1995	--	169.75	22.92	--	146.83	--	--	--	--	--	--	--	--	--	
8/22/1995	--	169.75	24.45	0.85	144.45	--	--	--	--	--	--	--	--	--	
10/27/1995	--	169.75	25.41	--	143.65	--	--	--	--	--	--	--	--	--	
10/30/95-12/23/95	--	169.75	--	0.69	--	--	--	--	--	--	--	--	--	--	
1/25/96-2/16/96	--	169.75	--	1.40	150.15	--	--	--	--	--	--	--	--	--	
1/25/1996	--	169.75	18.20	--	151.55	--	--	--	--	--	--	--	--	--	
4/19/1996	--	169.75	19.06	1.22	149.47	--	--	--	--	--	--	--	--	--	
7/23/1996	--	169.75	22.98	0.89	145.88	--	--	--	--	--	--	--	--	--	
11/11/1996	--	169.75	23.99	0.89	144.78	--	--	--	--	--	--	--	--	--	
1/21/1997	--	169.75	16.80	0.9	152.05	--	--	--	--	--	--	--	--	--	
4/29/1997	--	169.75	21.90	0.85	147.00	--	--	--	--	--	--	--	--	--	
4/30/1997	--	169.75	--	--	--	92,000	3,500	8,100	4,400	23,800	6,900	--	--	--	c

Table 1. Summary of Ground-Water Monitoring Data: Relative Water Elevations and Laboratory Analyses
Station #11132, 3201 35th Ave, Oakland, CA

Well and Sample Date	P/NP	TOC Elevation (feet msl)	Depth to Water (feet bgs)	Product Thickness (feet)	Water Level Elevation (feet msl)	Concentrations in (µg/L)						(mg/L) DO	Lab	pH	Comments
						GRO/TPHg	Benzene	Toluene	Ethyl-Benzene	Total Xylenes	MTBE				
MW-1 Cont.															
4/30/1997	--	169.75	--	--	--	100,000	3,600	8,000	4,000	21,300	7,700	5.2	--	--	
8/21/1997	--	169.75	--	--	--	120,000	3,200	8,100	3,800	19,600	5,200	--	--	--	c
8/21/1997	--	169.75	23.40	--	146.35	140,000	3,000	8,500	3,900	22,100	5,700	5.3	--	--	
11/2/97-12/9/97	--	169.75	--	0.87	--	--	--	--	--	--	--	--	--	--	
11/5/1997	--	169.75	--	--	--	88,000	7,300	4,800	3,600	16,900	8,200	--	--	--	c
11/5/1997	--	169.75	23.70	--	145.51	68,000	6,200	4,400	3,300	14,300	8,000	4.7	--	--	
2/3/1998	--	169.75	13.63	0.32	155.80	--	--	--	--	--	--	--	--	--	
2/4/1998	--	169.75	--	--	--	160,000	2,300	8,400	5,000	29,400	<10000	--	--	--	c
2/4/1998	--	169.75	--	--	--	190,000	2,200	10,000	5,600	32,000	<10000	5.3	--	--	
5/28/1998	--	169.75	18.03	0.17	151.55	87,000	980	3,900	3,600	19,000	2,900	3.8	--	--	
12/30/1998	--	169.75	19.50	0.08	150.17	70,000	530	3,200	2,900	16,000	3,600	--	--	--	
2/2/1999	--	169.75	18.93	0.03	150.79	79,000	480	3,100	3,500	21,000	3,500	--	--	--	
5/10/1999	--	169.75	18.28	0.03	151.44	110,000	160	1,900	3,700	24,000	3,000	--	--	--	
8/24/1999	--	169.75	20.13	0.06	149.56	110,000	850	1,300	1,900	19,000	<50	--	--	--	
11/3/1999	--	169.75	22.27	0.36	147.12	65,000	6,300	1,100	3,300	9,500	8,900	--	--	--	
3/1/2000	--	169.75	14.79	0.23	154.73	--	--	--	--	--	--	--	--	--	h
4/21/2000	--	169.75	18.10	0.33	151.32	61,000	330	780	2,700	17,000	1,300	--	--	--	
7/31/2000	--	169.75	21.60	0.53	147.62	1,500,000	340	2,100	24,000	120,000	2,700	--	--	--	
11/20/2000	--	169.75	21.69	0.37	147.69	1,700,000	1,800	2,300	19,000	93,000	3,900	--	--	--	
2/18/2001	--	169.75	16.70	0.13	152.92	--	--	--	--	--	--	--	--	--	
2/26/2001	--	169.75	14.38	0.15	155.22	100,000	658	466	4,210	15,000	1,890	--	--	--	
6/7/2001	--	169.75	20.78	0	148.97	70,000	705	440	3,870	12,200	2,720	--	--	--	
9/5/2001	--	169.75	23.36	0.35	146.04	--	--	--	--	--	--	--	--	--	j
11/30/2001	--	169.75	20.85	0.41	148.49	--	--	--	--	--	--	--	--	--	k
12/6/2001	--	169.75	18.72	0.27	150.76	39,000	3,500	237	2,150	4,500	5,400	--	--	--	
2/20/2002	--	169.75	17.43	0.15	152.17	52,000	465	271	1,600	11,400	106	--	--	--	
6/20/2002	--	169.75	21.18	0.34	148.23	--	--	--	--	--	--	--	--	--	j
9/11/2002	--	169.75	22.86	0.4	146.49	--	--	--	--	--	--	--	--	--	j
11/12/2002	--	169.75	22.65	0.37	146.73	--	--	--	--	--	--	--	--	--	j
1/29/2003	--	169.75	18.15	0.3	151.30	--	--	--	--	--	--	--	--	--	j,n
5/22/2003	--	169.75	18.49	0.2	151.06	--	--	--	--	--	--	--	--	--	j

Table 1. Summary of Ground-Water Monitoring Data: Relative Water Elevations and Laboratory Analyses
Station #11132, 3201 35th Ave, Oakland, CA

Well and Sample Date	P/NP	TOC Elevation (feet msl)	Depth to Water (feet bgs)	Product Thickness (feet)	Water Level Elevation (feet msl)	Concentrations in (µg/L)					(mg/L) DO	Lab	pH	Comments
						GRO/TPHg	Benzene	Toluene	Ethyl-Benzene	Total Xylenes				
MW-1 Cont.														
6/24/2003		169.75	21.44	0.35	147.96	--	--	--	--	--	--	--	--	o
7/28/2003	--	169.75	22.72	0.35	146.68	--	--	--	--	--	--	--	--	j
8/12/2003		169.75	22.64	0.23	146.88	--	--	--	--	--	--	--	--	o
9/12/2003	--	169.75	20.70	0.24	148.81	--	--	--	--	--	--	--	--	o
10/3/2003		169.75	--	0.23	--	--	--	--	--	--	--	--	--	
11/18/2003	NP	169.75	21.70	0.25	148.25	--	--	--	--	--	--	--	--	
12/31/2003		169.75	--	0.15	--	--	--	--	--	--	--	--	--	
2/2/2004	--	169.75	--	0.15	--	--	--	--	--	--	--	--	--	
02/23/2004	NP	169.75	16.34	0.09	153.48	--	--	--	--	--	--	--	--	
3/18/2004	--	169.75	--	0.09	--	--	--	--	--	--	--	--	--	
4/13/2004		169.75	--	0.24	--	--	--	--	--	--	--	--	--	
05/04/2004	NP	169.75	21.28	0.16	148.60	--	--	--	--	--	--	--	--	
6/2/2004		169.75	--	0.08	--	--	--	--	--	--	--	--	--	
7/2/2004	--	169.75	--	0.28	--	--	--	--	--	--	--	--	--	
08/04/2004		169.75	22.54	0.10	147.29	--	--	--	--	--	--	--	--	
09/22/2004	NP	169.75	22.76	0.20	147.15	--	--	--	--	--	--	--	--	
10/26/2004		169.75	--	0.12	--	--	--	--	--	--	--	--	--	
11/10/2004	--	169.75	20.19	0.14	149.67	--	--	--	--	--	--	--	--	
12/27/2004		169.75	--	0.08	--	--	--	--	--	--	--	--	--	
01/13/2005	--	169.75	14.58	0.03	155.19	--	--	--	--	--	--	--	--	
02/15/2005		169.75	16.13	0.04	153.65	--	--	--	--	--	--	--	--	
03/07/2005	--	169.75	13.31	0.01	156.45	--	--	--	--	--	--	--	--	
4/29/2005		169.75	--	0.01	--	--	--	--	--	--	--	--	--	
05/16/2005	--	169.75	15.74	0.02	154.03	--	--	--	--	--	--	--	--	j
6/21/2005		169.75	--	0.01	--	--	--	--	--	--	--	--	--	
7/7/2005	--	169.75	--	0.18	--	--	--	--	--	--	--	--	--	
08/17/2005		169.75	21.15	0.08	148.66	--	--	--	--	--	--	--	--	j
9/6/2005	--	169.75	--	0.02	--	--	--	--	--	--	--	--	--	
10/4/2005		169.75	--	0.12	--	--	--	--	--	--	--	--	--	
11/18/2005	--	169.75	20.15	--	149.60	--	--	--	--	--	--	--	--	j
12/30/2005		169.75	--	0.03	--	--	--	--	--	--	--	--	--	

Table 1. Summary of Ground-Water Monitoring Data: Relative Water Elevations and Laboratory Analyses

Station #11132, 3201 35th Ave, Oakland, CA

Well and Sample Date	P/NP	TOC Elevation (feet msl)	Depth to Water (feet bgs)	Product Thickness (feet)	Water Level Elevation (feet msl)	Concentrations in (µg/L)						(mg/L) DO	Lab	pH	Comments
						GRO/TPHg	Benzene	Toluene	Ethyl-Benzene	Total Xylenes	MTBE				
MW-1 Cont.															
1/24/2006	--	169.75	--	0.00	--	--	--	--	--	--	--	--	--	--	--
02/07/2006	--	169.75	15.19	0.01	154.57	--	--	--	--	--	--	--	--	--	j
3/30/2006	--	169.75	--	0.00	--	--	--	--	--	--	--	--	--	--	--
5/19/2006	P	169.75	17.42	--	152.33	44,000	73	510	3,300	5,300	86	--	SEQM	6.9	u, t
8/23/2006	--	169.75	22.01	0.14	147.74	--	--	--	--	--	--	--	--	--	b, j
11/15/2006	--	169.75	21.98	0.18	147.91	--	--	--	--	--	--	--	--	--	b, j
2/14/2007	--	169.75	17.12	0.17	152.76	--	--	--	--	--	--	--	--	--	b, j
5/22/2007	--	169.75	19.49	0.01	150.26	--	--	--	--	--	--	--	--	--	b, j
MW-2															
7/9/1990	--	168.14	--	--	--	--	--	--	--	--	--	--	--	--	--
12/21/1990	--	168.14	--	--	--	--	--	--	--	--	--	--	--	--	--
3/7/1991	--	168.14	19.18	--	148.96	--	--	--	--	--	--	--	--	--	--
4/1/1991	--	168.14	15.21	--	152.93	--	--	--	--	--	--	--	--	--	--
6/27/1991	--	168.14	--	--	--	--	--	--	--	--	--	--	--	--	--
9/27/1991	--	168.14	--	--	--	--	--	--	--	--	--	--	--	--	--
12/18/1991	--	168.14	--	--	--	--	--	--	--	--	--	--	--	--	--
7/3/1992	--	168.14	20.93	--	147.21	--	--	--	--	--	--	--	--	--	--
10/5/1992	--	168.14	22.74	--	145.40	--	--	--	--	--	--	--	--	--	--
1/13/1993	--	168.14	15.55	--	152.59	--	--	--	--	--	--	--	--	--	--
4/23/1993	--	168.14	16.54	--	151.60	--	--	--	--	--	--	--	--	--	--
7/12/1993	--	168.14	20.46	--	147.68	--	--	--	--	--	--	--	--	--	--
10/21/1993	--	168.14	24.91	--	143.23	--	--	--	--	--	--	--	--	--	--
1/21/1994	--	168.14	21.20	--	146.94	--	--	--	--	--	--	--	--	--	--
4/20/1994	--	168.14	22.44	--	145.70	1,800	140	370	54	290	24	1.7	--	--	--
8/1/1994	--	168.14	22.24	--	145.90	--	--	--	--	--	--	--	--	--	--
12/23/1994	--	168.14	16.25	--	151.89	--	--	--	--	--	--	--	--	--	--
1/26/1995	--	168.14	14.55	--	153.59	--	--	--	--	--	--	--	--	--	--
6/8/1995	--	168.14	21.18	--	146.96	--	--	--	--	--	--	--	--	--	--
8/22/1995	--	168.14	22.76	--	145.38	--	--	--	--	--	--	--	--	--	--
10/27/1995	--	168.14	23.61	--	144.53	--	--	--	--	--	--	--	--	--	--

Table 1. Summary of Ground-Water Monitoring Data: Relative Water Elevations and Laboratory Analyses

Station #11132, 3201 35th Ave, Oakland, CA

Well and Sample Date	P/NP	TOC Elevation (feet msl)	Depth to Water (feet bgs)	Product Thickness (feet)	Water Level Elevation (feet msl)	Concentrations in (µg/L)						(mg/L) DO	Lab	pH	Comments
						GRO/TPHg	Benzene	Toluene	Ethyl-Benzene	Total Xylenes	MTBE				
MW-2 Cont.															
1/25/1996	--	168.14	15.95	--	152.19	--	--	--	--	--	--	--	--	--	
4/19/1996	--	168.14	17.33	--	150.81	--	--	--	--	--	--	--	--	--	
7/23/1996	--	168.14	21.25	--	146.89	--	--	--	--	--	--	--	--	--	
11/11/1996	--	168.14	22.27	--	145.87	--	--	--	--	--	--	--	--	--	
1/21/1997	--	168.14	15.19	--	152.95	--	--	--	--	--	--	--	--	--	
4/29/1997	--	168.14	20.22	--	147.92	--	--	--	--	--	--	--	--	--	
4/30/1997	--	168.14	--	--	--	130,000	4,600	15,000	6,000	37,000	<5000	5	--	--	
8/21/1997	--	168.14	21.74	--	146.40	110,000	6,000	16,000	4,700	28,000	<500	4.6	--	--	
11/5/1997	--	168.14	21.61	--	146.53	120,000	7,800	18,000	4,900	28,100	<2500	4.6	--	--	
2/3/1998	--	168.14	11.51	--	156.63	75,000	590	1,500	1,800	12,800	<2500	4.5	--	--	
5/28/1998	--	168.14	16.51	--	151.63	79,000	3,900	3,100	3,100	18,000	900	4.3	--	--	
12/30/1998	--	168.14	17.70	--	150.44	95,000	4,700	3,500	3,700	21,000	<250	--	--	--	
2/2/1999	--	168.14	15.46	--	152.68	170,000	3,500	1,500	5,200	34,000	<500	--	--	--	
5/10/1999	--	168.14	16.52	--	151.62	84,000	3,200	3,200	3,700	20,000	75	--	--	--	
8/24/1999	--	168.14	20.73	--	147.41	130,000	9,100	9,200	4,700	27,000	<250	--	--	--	
11/3/1999	--	168.14	20.93	--	147.21	120,000	10,000	21,000	4,700	30,200	2,200	--	--	--	
3/1/2000	--	168.14	13.37	--	154.77	39,000	1,400	1,500	1,700	8,100	44	--	--	--	
4/21/2000	--	168.14	16.59	--	151.55	68,000	3,300	2,500	3,100	20,000	260	--	--	--	
7/31/2000	--	168.14	16.37	--	151.77	99,000	5,600	1,400	4,300	22,000	490	--	--	--	
11/20/2000	--	168.14	19.71	--	148.43	37,000	5,100	1,500	1,300	4,800	2,800	--	--	--	
2/18/2001	--	168.14	15.29	--	152.85	54,000	5,020	3,880	2,850	15,400	1,010	--	--	--	
6/7/2001	--	168.14	19.43	--	148.71	110,000	7,240	4,380	4,160	22,100	567	--	--	--	
9/5/2001	--	168.14	22.44	--	145.70	69,000	5,750	5,790	2,770	14,200	1,510	--	--	--	
11/30/2001	--	168.14	19.58	--	148.56	120,000	7,270	6,540	4,590	23,000	794	--	--	--	
2/20/2002	--	168.14	16.39	--	151.75	56,000	2,410	2,270	2,910	14,300	160	--	--	--	
6/20/2002	--	168.14	19.77	--	148.37	86,000	7,310	6,490	3,080	14,600	659	--	--	--	
9/11/2002	--	168.14	21.60	--	146.54	130,000	7,600	13,000	5,400	30,000	<5000	--	--	--	
11/12/2002	--	168.14	21.34	--	146.80	46,000	4,100	4,300	1,900	10,000	1,900	--	--	--	t
1/29/2003	--	168.14	16.80	--	151.34	77,000	4,700	2,600	2,800	13,000	820	--	--	--	n,t
5/22/2003	--	168.14	17.15	--	150.99	52,000	6,400	2,600	1,800	7,400	1,000	--	--	--	t
7/28/2003	--	168.14	21.47	--	146.67	31,000	6,900	5,500	2,200	12,000	1,700	--	--	--	p

Table 1. Summary of Ground-Water Monitoring Data: Relative Water Elevations and Laboratory Analyses
Station #11132, 3201 35th Ave, Oakland, CA

Well and Sample Date	P/NP	TOC Elevation (feet msl)	Depth to Water (feet bgs)	Product Thickness (feet)	Water Level Elevation (feet msl)	Concentrations in (µg/L)						(mg/L) DO	Lab	pH	Comments
						GRO/TPHg	Benzene	Toluene	Ethyl-Benzene	Total Xylenes	MTBE				
MW-2 Cont.															
11/18/2003	P	168.14	20.50	--	147.64	23,000	3,300	800	500	2,000	500	--	SEQM	6.6	
02/23/2004	P	168.14	14.77	--	153.37	84,000	14,000	6,200	3,100	14,000	790	--	SEQM	6.6	t
05/04/2004	P	168.14	20.09	--	148.05	120,000	15,000	17,000	4,900	24,000	780	--	SEQM	6.6	t
08/04/2004	P	168.14	21.39	--	146.75	38,000	9,100	3,300	1,900	5,800	430	--	SEQM	6.69	t
11/10/2004	P	168.14	18.98	--	149.16	22,000	4,400	2,000	940	3,600	310	--	SEQM	7.5	
02/15/2005	P	168.14	15.62	--	152.52	67,000	11,000	4,200	3,000	11,000	690	--	SEQM	7.1	t
05/16/2005	P	168.14	14.71	--	153.43	94,000	11,000	7,600	4,100	17,000	560	--	SEQM	6.5	
08/17/2005	P	168.14	20.00	--	148.14	110,000	13,000	8,000	4,300	18,000	480	--	SEQM	6.6	
11/18/2005	P	168.14	20.89	--	147.25	37,000	11,000	2,400	1,500	4,600	340	--	SEQM	6.6	
02/07/2006	P	168.14	13.31	--	154.83	74,000	8,900	5,800	3,600	14,000	440	--	SEQM	6.7	
5/19/2006	P	168.14	16.30	--	151.84	78,000	11,000	3,700	4,500	14,000	430	--	SEQM	6.6	t
8/23/2006	P	168.14	20.83	--	147.31	100,000	12,000	9,100	5,800	25,000	480	--	TAMC	6.6	
11/15/2006	--	168.14	20.80	--	147.34	46,000	8,800	3,600	2,300	8,500	400	0.70	TAMC	6.73	
2/14/2007	P	168.14	15.96	GREEN	152.18	100,000	13,000	3,600	6,200	26,000	810	1.43	TAMC	6.97	t
5/22/2007	P	168.14	18.20	--	149.94	91,000	15,000	8,700	4,700	20,000	1,000	0.08	TAMC	6.90	
MW-3															
7/9/1990	--	167.17	--	--	--	140	5.3	4.6	2	3.8	--	--	--	--	
12/21/1990	--	167.17	--	--	--	0.19	100	6	0.9	27	--	--	--	--	
3/7/1991	--	167.17	17.40	--	149.77	0.4	69	22	6.1	57	--	--	--	--	
4/1/1991	--	167.17	13.69	--	153.48	--	--	--	--	--	--	--	--	--	
6/27/1991	--	167.17	--	--	--	380	28	26	13	46	--	--	--	--	
9/27/1991	--	167.17	--	--	--	0.07	7.9	--	0.4	1.1	--	--	--	--	
12/18/1991	--	167.17	--	--	--	0.26	34	24	0.8	28	--	--	--	--	
7/3/1992	--	167.17	19.59	--	147.58	71	9.4	0.9	5	13	--	--	--	--	
10/5/1992	--	167.17	--	--	--	<50	2.2	<0.5	1.5	2.8	--	--	--	--	c
10/5/1992	--	167.17	21.22	--	145.95	67	5.1	1.1	6.1	8.1	--	--	--	--	
1/13/1993	--	167.17	13.63	--	153.54	830	50	34	42	89	--	--	--	--	
4/23/1993	--	167.17	--	--	--	<50	<0.5	<0.5	<0.5	<0.5	--	--	--	--	c,i
4/23/1993	--	167.17	15.02	--	152.15	<50	<0.5	<0.5	<0.5	<0.5	--	--	--	--	i
7/12/1993	--	167.17	19.16	--	148.01	250	12	4.2	12	16	<5.0	--	--	--	i

Table 1. Summary of Ground-Water Monitoring Data: Relative Water Elevations and Laboratory Analyses
Station #11132, 3201 35th Ave, Oakland, CA

Well and Sample Date	P/NP	TOC Elevation (feet msl)	Depth to Water (feet bgs)	Product Thickness (feet)	Water Level Elevation (feet msl)	Concentrations in (µg/L)						(mg/L)	Lab	pH	Comments
						GRO/TPHg	Benzene	Toluene	Ethyl-Benzene	Total Xylenes	MTBE				
MW-3 Cont.															
10/21/1993	--	167.17	--	--	--	65	7.4	1	6.9	4.2	--	--	--	--	c
10/21/1993	--	167.17	21.81	--	145.36	52	4.4	1.4	4.7	3.3	<5.0	--	--	--	i
1/21/1994	--	167.17	19.94	--	147.23	57	3	3.4	3.6	9	<5.0	--	--	--	i
4/20/1994	--	167.17	20.24	--	146.93	600	26	23	33	88	28.7	1.8	--	--	i
8/1/1994	--	167.17	--	--	--	120	7.7	1.6	5.9	6.7	5.43	--	--	--	c,i
8/1/1994	--	167.17	20.74	--	146.43	99	6.2	1.1	4.5	5.2	<5.0	1.4	--	--	i
12/23/1994	--	167.17	--	--	--	<50	<0.5	<0.5	<0.5	<0.5	--	--	--	--	c
12/23/1994	--	167.17	14.70	--	152.47	<50	<0.5	0.78	<0.5	<0.5	9.8	1.7	--	--	i
1/26/1995	--	167.17	12.89	--	154.28	190	16	0.5	35	24	--	6.6	--	--	d
6/8/1995	--	167.17	19.95	--	147.22	330	21	4	34	32	--	7	--	--	
8/22/1995	--	167.17	21.41	--	145.76	150	14	<0.50	<0.50	1.6	<5.0	6.6	--	--	d
10/27/1995	--	167.17	22.43	--	144.74	--	--	--	--	--	--	--	--	--	
10/30/1995	--	167.17	--	--	--	51	2.4	<0.50	<0.50	<1.0	<5.0	6.9	--	--	
1/25/1996	--	167.17	14.03	--	153.14	<50	<0.50	<0.50	<0.50	<1.0	5.1	--	--	--	
4/19/1996	--	167.17	15.26	--	151.91	460	55	4	33	63	<10	9.4	--	--	
7/23/1996	--	167.17	19.19	--	147.98	<50	<0.5	<0.5	<0.5	<0.5	<10	9.2	--	--	
11/17/1996	--	167.17	20.24	--	146.93	<250	<2.5	<5.0	<5.0	<5.0	<50	8.4	--	--	
1/21/1997	--	167.17	13.09	--	154.08	<50	<0.5	<1.0	<1.0	<1.0	<10	5.4	--	--	
4/29/1997	--	167.17	18.14	--	149.03	<50	<0.5	<1.0	<1.0	<1.0	<10	4.3	--	--	
8/21/1997	--	167.17	19.64	--	147.53	<50	<0.5	<1.0	<1.0	<1.0	<10	4.9	--	--	
11/5/1997	--	167.17	19.95	--	147.22	<250	<2.5	<5.0	<5.0	<5.0	<50	4.5	--	--	
2/3/1998	--	167.17	10.57	--	156.60	<50	<0.50	<1.0	<1.0	<1.0	<10	4.7	--	--	
5/28/1998	--	167.17	14.65	--	152.52	330	<2.5	<5.0	<5.0	<5.0	<50	4.2	--	--	
12/30/1998	--	167.17	16.63	--	150.54	--	--	--	--	--	--	--	--	--	
2/2/1999	--	167.17	13.12	--	154.05	<250	<5.0	<5.0	<5.0	<5.0	<5.0	--	--	--	
5/10/1999	--	167.17	14.21	--	152.96	--	--	--	--	--	--	--	--	--	
8/24/1999	--	167.17	14.36	--	152.81	--	--	--	--	--	--	--	--	--	
11/3/1999	--	167.17	19.21	--	147.96	--	--	--	--	--	--	--	--	--	
3/1/2000	--	167.17	15.17	--	152.00	<50	<0.5	0.57	<0.5	0.62	<0.5	--	--	--	
4/21/2000	--	167.17	14.88	--	152.29	--	--	--	--	--	--	--	--	--	
7/31/2000	--	167.17	15.29	--	151.88	--	--	--	--	--	--	--	--	--	

Table 1. Summary of Ground-Water Monitoring Data: Relative Water Elevations and Laboratory Analyses

Station #11132, 3201 35th Ave, Oakland, CA

Well and Sample Date	P/NP	TOC Elevation (feet msl)	Depth to Water (feet bgs)	Product Thickness (feet)	Water Level Elevation (feet msl)	Concentrations in (µg/L)						(mg/L) DO	Lab	pH	Comments
						GRO/TPHg	Benzene	Toluene	Ethyl-Benzene	Total Xylenes	MTBE				
MW-3 Cont.															
11/20/2000	--	167.17	17.31	--	149.86	--	--	--	--	--	--	--	--	--	
2/18/2001	--	167.17	12.85	--	154.32	160	1.95	1.31	10.2	9.09	1	--	--	--	
6/7/2001	--	167.17	18.00	--	149.17	--	--	--	--	--	--	--	--	--	
9/5/2001	--	167.17	20.32	--	146.85	--	--	--	--	--	--	--	--	--	
11/30/2001	--	167.17	16.94	--	150.23	--	--	--	--	--	--	--	--	--	
2/20/2002	--	167.17	14.84	--	152.33	86	<0.5	0.845	6.58	5.75	<0.5	--	--	--	
6/20/2002	--	167.17	18.40	--	148.77	--	--	--	--	--	--	--	--	--	
9/11/2002	--	167.17	20.06	--	147.11	--	--	--	--	--	--	--	--	--	
11/12/2002	--	167.17	19.84	--	147.33	--	--	--	--	--	--	--	--	--	
1/27/2003	--	167.17	14.83	--	152.34	850	20	9.7	24	45	0.76	--	--	--	n
5/22/2003	--	167.17	15.60	--	151.57	--	--	--	--	--	--	--	--	--	
7/28/2003	--	167.17	20.12	--	147.05	--	--	--	--	--	--	--	--	--	p
11/18/2003	--	167.17	19.15	--	148.02	--	--	--	--	--	--	--	--	--	
02/23/2004	--	167.17	13.53	--	153.64	160	<0.50	1.1	9.6	12	<0.50	--	SEQM	6.7	
05/04/2004	--	167.17	18.61	--	148.56	--	--	--	--	--	--	--	--	--	
08/04/2004	--	167.17	19.21	--	147.96	--	--	--	--	--	--	--	--	--	
11/10/2004	--	167.17	17.48	--	149.69	--	--	--	--	--	--	--	--	--	
02/15/2005	P	167.17	14.31	--	152.86	500	7.8	1.8	9.2	9.6	1.7	--	SEQM	7.5	
05/16/2005	--	167.17	13.11	--	154.06	--	--	--	--	--	--	--	--	--	
08/17/2005	--	167.17	18.53	--	148.64	--	--	--	--	--	--	--	--	--	
11/18/2005	--	167.17	19.34	--	147.83	--	--	--	--	--	--	--	--	--	
02/07/2006	P	167.17	11.64	--	155.53	65	<0.50	<0.50	1.4	2.3	<0.50	--	SEQM	7.1	
5/19/2006	--	167.17	14.88	--	152.29	--	--	--	--	--	--	--	--	--	
8/23/2006	--	167.17	19.43	--	147.74	--	--	--	--	--	--	--	--	--	
11/15/2006	--	167.17	19.22	--	147.95	--	--	--	--	--	--	--	--	--	
2/14/2007	P	167.17	13.80	--	153.37	200	1.1	<0.50	5.9	3.2	3.8	0.68	TAMC	7.52	
5/22/2007	--	167.17	16.80	--	150.37	--	--	--	--	--	--	--	--	--	
MW-4															
7/9/1990	--	170.36	--	--	--	--	--	--	--	--	--	--	--	--	
12/21/1990	--	170.36	--	--	--	--	--	--	--	0.8	--	--	--	--	

Table 1. Summary of Ground-Water Monitoring Data: Relative Water Elevations and Laboratory Analyses
Station #11132, 3201 35th Ave, Oakland, CA

Well and Sample Date	P/NP	TOC Elevation (feet msl)	Depth to Water (feet bgs)	Product Thickness (feet)	Water Level Elevation (feet msl)	Concentrations in (µg/L)						(mg/L) DO	Lab	pH	Comments
						GRO/TPHg	Benzene	Toluene	Ethyl-Benzene	Total Xylenes	MTBE				
MW-4 Cont.															
3/7/1991	--	170.36	20.72	--	149.64	--	2.2	3.8	1.5	2.8	--	--	--	--	
4/1/1991	--	170.36	17.49	--	152.87	--	--	--	--	--	--	--	--	--	
6/27/1991	--	170.36	--	--	--	--	6.3	1.8	0.4	1	--	--	--	--	
9/27/1991	--	170.36	--	--	--	--	--	--	--	--	--	--	--	--	
12/18/1991	--	170.36	--	--	--	--	--	--	--	--	--	--	--	--	
7/3/1992	--	170.36	22.16	--	148.20	<50	<0.5	<0.5	<0.5	<0.5	--	--	--	--	
10/5/1992	--	170.36	23.38	--	146.98	<50	<0.5	<0.5	<0.5	<0.5	--	--	--	--	
1/13/1993	--	170.36	17.58	--	152.78	<50	<0.5	<0.5	<0.5	<0.5	--	--	--	--	i
4/23/1993	--	170.36	15.72	--	154.64	<50	<0.5	<0.5	<0.5	<0.5	--	--	--	--	i
7/12/1993	--	170.36	21.74	--	148.62	<50	<0.5	<0.5	<0.5	<0.5	<5.0	--	--	--	i
10/21/1993	--	170.36	23.84	--	146.52	<50	<0.5	<0.5	<0.5	<0.5	<5.0	--	--	--	i
1/21/1994	--	170.36	22.42	--	147.94	<50	<0.5	<0.5	<0.5	<0.5	<5.0	--	--	--	i
4/20/1994	--	170.36	22.66	--	147.70	<50	<0.5	<0.5	<0.5	<0.5	<5.0	2.2	--	--	
8/1/1994	--	170.36	23.01	--	147.35	<50	<0.5	<0.5	<0.5	<0.5	<5.0	1.9	--	--	i
12/23/1994	--	170.36	17.03	--	153.33	--	--	--	--	--	--	--	--	--	
1/26/1995	--	170.36	17.42	--	152.94	<50	<0.5	<0.5	<0.5	<1	--	7.5	--	--	
6/8/1995	--	170.36	21.55	--	148.81	--	--	--	--	--	--	--	--	--	
8/22/1995	--	170.36	23.47	--	146.89	<50	<0.50	<0.50	<0.50	<1.0	<5.0	6.4	--	--	d
10/27/1995	--	170.36	24.50	--	145.86	--	--	--	--	--	--	--	--	--	
1/25/1996	--	170.36	18.74	--	151.62	<50	<0.50	<0.50	<0.50	<1.0	58	--	--	--	
4/19/1996	--	170.36	18.63	--	151.73	--	--	--	--	--	--	--	--	--	
7/23/1996	--	170.36	22.56	--	147.80	--	--	--	--	--	--	--	--	--	
11/11/1996	--	170.36	23.63	--	146.73	<50	<1.0	<1.0	<1.0	<1.0	34	8.2	--	--	
1/21/1997	--	170.36	16.59	--	153.77	--	--	--	--	--	--	--	--	--	
4/29/1997	--	170.36	21.43	--	148.93	<50	<0.5	<1.0	<1.0	<1.0	<1.0	4.7	--	--	
8/21/1997	--	170.36	22.91	--	147.45	--	--	--	--	--	--	--	--	--	
11/5/1997	--	170.36	22.34	--	148.02	60	<0.5	<1.0	<1.0	<1.0	76	4.9	--	--	
2/3/1998	--	170.36	12.26	--	158.10	--	--	--	--	--	--	--	--	--	
5/28/1998	--	170.36	18.50	--	151.86	70	<0.5	<1.0	<1.0	<1.0	160	4.2	--	--	
12/30/1998	--	170.36	19.69	--	150.67	--	--	--	--	--	--	--	--	--	
2/2/1999	--	170.36	18.26	--	152.10	70	<1.0	<1.0	<1.0	<1.0	130	--	--	--	

Table 1. Summary of Ground-Water Monitoring Data: Relative Water Elevations and Laboratory Analyses

Station #11132, 3201 35th Ave, Oakland, CA

Well and Sample Date	P/NP	TOC Elevation (feet msl)	Depth to Water (feet bgs)	Product Thickness (feet)	Water Level Elevation (feet msl)	Concentrations in (µg/L)						(mg/L) DO	Lab	pH	Comments
						GRO/TPHg	Benzene	Toluene	Ethyl-Benzene	Total Xylenes	MTBE				
MW-4 Cont.															
5/10/1999	--	170.36	17.86	--	152.50	--	--	--	--	--	--	--	--	--	
8/24/1999	--	170.36	17.93	--	152.43	--	--	--	--	--	--	--	--	--	
11/3/1999	--	170.36	22.78	--	147.58	--	--	--	--	--	--	--	--	--	
3/1/2000	--	170.36	18.04	--	152.32	<50	<0.5	0.67	<0.5	0.7	110	--	--	--	
4/21/2000	--	170.36	17.36	--	153.00	--	--	--	--	--	--	--	--	--	
7/31/2000	--	170.36	17.83	--	152.53	--	--	--	--	--	--	--	--	--	
11/20/2000	--	170.36	18.91	--	151.45	--	--	--	--	--	--	--	--	--	
2/18/2001	--	170.36	17.72	--	152.64	88	<0.5	<0.5	<0.5	<0.5	97.3	--	--	--	
6/7/2001	--	170.36	20.23	--	150.13	--	--	--	--	--	--	--	--	--	
9/5/2001	--	170.36	22.76	--	147.60	--	--	--	--	--	--	--	--	--	
11/30/2001	--	170.36	21.30	--	149.06	--	--	--	--	--	--	--	--	--	
2/20/2002	--	170.36	19.32	--	151.04	76	<0.5	<0.5	<0.5	<1.0	81	--	--	--	
6/20/2002	--	170.36	20.71	--	149.65	--	--	--	--	--	--	--	--	--	
9/11/2002	--	170.36	22.22	--	148.14	--	--	--	--	--	--	--	--	--	
11/13/2002	--	170.36	22.22	--	148.14	--	--	--	--	--	--	--	--	--	
1/29/2003	--	170.36	19.80	--	150.56	100	<0.5	<0.5	<0.5	<0.5	66	--	--	--	n
5/22/2003	--	170.36	19.35	--	151.01	--	--	--	--	--	--	--	--	--	
7/28/2003	--	170.36	22.18	--	148.18	--	--	--	--	--	--	--	--	--	p
11/18/2003	--	170.36	21.65	--	148.71	--	--	--	--	--	--	--	--	--	
02/23/2004	P	170.36	17.53	--	152.83	75	<0.50	<0.50	<0.50	<0.50	65	--	SEQM	6.8	
05/04/2004	--	170.36	20.62	--	149.74	--	--	--	--	--	--	--	--	--	
08/04/2004	--	170.36	21.30	--	149.06	--	--	--	--	--	--	--	--	--	
11/10/2004	--	170.36	20.65	--	149.71	--	--	--	--	--	--	--	--	--	
02/15/2005	P	170.36	18.91	--	151.45	<50	<0.50	<0.50	<0.50	<0.50	62	--	SEQM	7.6	
05/16/2005	--	170.36	17.34	--	153.02	--	--	--	--	--	--	--	--	--	
08/17/2005	--	170.36	21.31	--	149.05	--	--	--	--	--	--	--	--	--	
11/18/2005	--	170.36	21.67	--	148.69	--	--	--	--	--	--	--	--	--	
02/07/2006	P	170.36	16.74	--	153.62	100	<0.50	<0.50	1.0	3.0	29	--	SEQM	6.8	
5/19/2006	--	170.36	18.22	--	152.14	--	--	--	--	--	--	--	--	--	
8/23/2006	--	170.36	20.95	--	149.41	--	--	--	--	--	--	--	--	--	
11/15/2006	--	170.36	22.21	--	148.15	--	--	--	--	--	--	--	--	--	

Table 1. Summary of Ground-Water Monitoring Data: Relative Water Elevations and Laboratory Analyses
Station #11132, 3201 35th Ave, Oakland, CA

Well and Sample Date	P/NP	TOC Elevation (feet msl)	Depth to Water (feet bgs)	Product Thickness (feet)	Water Level Elevation (feet msl)	Concentrations in (µg/L)						(mg/L) DO	Lab	pH	Comments
						GRO/TPHg	Benzene	Toluene	Ethyl-Benzene	Total Xylenes	MTBE				
MW-4 Cont.															
2/14/2007	P	170.36	18.25	--	152.11	<50	<0.50	<0.50	<0.50	<0.50	61	0.95	TAMC	7.34	
5/22/2007	--	170.36	20.16	--	150.20	--	--	--	--	--	--	--	--	--	
MW-5															
7/9/1990	--	165.14	--	--	--	280	200	210	46	290	--	--	--	--	
12/21/1990	--	165.14	--	--	--	0.69	300	34	8.4	39	--	--	--	--	
3/7/1991	--	165.14	16.60	--	148.54	--	17	0.9	0.7	1.6	--	--	--	--	
4/1/1991	--	165.14	11.99	--	153.15	800	250	54	11	60	--	--	--	--	
6/27/1991	--	165.14	--	--	--	330	120	10	12	8	--	--	--	--	
9/27/1991	--	165.14	--	--	--	0.73	230	16	20	22	--	--	--	--	
12/18/1991	--	165.14	--	--	--	--	--	--	--	--	--	--	--	--	
7/3/1992	--	165.14	18.65	--	146.49	150	36	<0.5	<0.5	1.1	--	--	--	--	
10/5/1992	--	165.14	20.32	--	144.82	270	79	4	1.7	2.9	--	--	--	--	
1/13/1993	--	165.14	13.03	--	152.11	180	59	6	1.8	7.6	--	--	--	--	i
4/23/1993	--	165.14	13.51	--	151.63	8,700	440	96	35	136	--	--	--	--	
7/12/1993	--	165.14	18.06	--	147.08	250	57	2.9	2.1	6	<5.0	--	--	--	i
10/21/1993	--	165.14	20.41	--	144.73	210	82	1.5	<0.5	1.4	--	--	--	--	
1/21/1994	--	165.14	18.86	--	146.28	110	36	1.2	<0.5	0.7	<5.0	--	--	--	i
4/20/1994	--	165.14	17.30	--	147.84	690	230	4.5	1.6	1.1	21.2	1.3	--	--	i
8/1/1994	--	165.14	17.53	--	147.61	170	44	1.6	0.9	2.7	<5.0	0.9	--	--	i
12/23/1994	--	165.14	11.63	--	153.51	630	180	1.9	0.66	1.9	7.81	1.4	--	--	i
1/26/1995	--	165.14	11.25	--	153.89	160	68	<0.5	<0.5	22	--	5.9	--	--	
6/8/1995	--	165.14	--	--	--	1,700	560	51	55	170	--	--	--	--	c
6/8/1995	--	165.14	16.80	--	148.34	2,000	630	58	61	180	--	6.5	--	--	
8/22/1995	--	165.14	19.02	--	146.12	3,700	1,100	18	27	59	<130	7.3	--	--	d
10/27/1995	--	165.14	20.94	--	144.20	--	--	--	--	--	--	--	--	--	
10/30/1995	--	165.14	--	--	--	6,500	2,200	55	180	270	<250	7.5	--	--	
1/25/1996	--	165.14	13.30	--	151.84	590	37	0.7	<0.50	<1.0	<5.0	--	--	--	
1/25/1996	--	165.14	--	--	--	540	37	0.66	<0.50	<1.0	<5.0	--	--	--	e
4/19/1996	--	165.14	13.63	--	151.51	1,500	470	38	49	210	<50	8.1	--	--	
7/23/1996	--	165.14	17.61	--	147.53	140	4.6	<0.5	<0.5	<0.5	<10	8	--	--	

Table 1. Summary of Ground-Water Monitoring Data: Relative Water Elevations and Laboratory Analyses

Station #11132, 3201 35th Ave, Oakland, CA

Well and Sample Date	P/NP	TOC Elevation (feet msl)	Depth to Water (feet bgs)	Product Thickness (feet)	Water Level Elevation (feet msl)	Concentrations in (µg/L)						(mg/L) DO	Lab	pH	Comments
						GRO/TPHg	Benzene	Toluene	Ethyl-Benzene	Total Xylenes	MTBE				
MW-5 Cont.															
11/11/1996	--	165.14	18.70	--	146.44	140	40	<1.0	<1.0	<1.0	<1.0	7.9	--	--	
1/21/1997	--	165.14	11.63	--	153.51	730	300	<5.0	7.8	26	<50	5	--	--	
4/29/1997	--	165.14	16.74	--	148.40	340	530	<5.0	<5.0	<5.0	<50	4.8	--	--	
8/21/1997	--	165.14	18.26	--	146.88	<50	<0.5	<1.0	<1.0	<1.0	<10	4.9	--	--	
11/5/1997	--	165.14	18.84	--	146.30	120	13	<1.0	<1.0	<1.0	<10	4.4	--	--	
2/3/1998	--	165.14	9.49	--	155.65	<50	<0.50	<1.0	<1.0	<1.0	<10	4.3	--	--	
5/28/1998	--	165.14	13.57	--	151.57	4,900	1,500	34	180	311	<10	4.1	--	--	
12/30/1998	--	165.14	14.65	--	150.49	--	--	--	--	--	--	--	--	--	
2/2/1999	--	165.14	12.56	--	152.58	100	<1.0	<1.0	<1.0	<1.0	9.1	--	--	--	
5/10/1999	--	165.14	13.36	--	151.78	--	--	--	--	--	--	--	--	--	
8/24/1999	--	165.14	13.50	--	151.64	--	--	--	--	--	--	--	--	--	
11/3/1999	--	165.14	18.48	--	146.66	--	--	--	--	--	--	--	--	--	
3/1/2000	--	165.14	9.59	--	155.55	<50	<0.5	0.58	<0.5	0.54	2.9	--	--	--	
4/21/2000	--	165.14	13.52	--	151.62	--	--	--	--	--	--	--	--	--	
7/31/2000	--	165.14	14.04	--	151.10	--	--	--	--	--	--	--	--	--	
11/20/2000	--	165.14	15.89	--	149.25	--	--	--	--	--	--	--	--	--	
2/18/2001	--	165.14	11.88	--	153.26	560	161	2.38	6.11	13	5.67	--	--	--	
6/7/2001	--	165.14	15.30	--	149.84	--	--	--	--	--	--	--	--	--	
9/5/2001	--	165.14	19.32	--	145.82	--	--	--	--	--	--	--	--	--	
11/30/2001	--	165.14	17.44	--	147.70	--	--	--	--	--	--	--	--	--	
2/20/2002	--	165.14	13.88	--	151.26	4,200	940	18.7	98.2	176	55.6	--	--	--	
6/20/2002	--	165.14	16.20	--	148.94	--	--	--	--	--	--	--	--	--	
9/11/2002	--	165.14	19.15	--	145.99	--	--	--	--	--	--	--	--	--	
11/12/2002	--	165.14	19.01	--	146.13	390	55	0.89	3.4	3.5	210	--	--	--	
1/29/2003	--	165.14	16.33	--	148.81	7,900	1,400	34	220	350	82	--	--	--	n
5/22/2003	--	165.14	14.35	--	150.79	9,900	2,300	91	400	690	<50	--	--	--	
7/28/2003	--	165.14	18.90	--	146.24	3,200	690	14	81	100	130	--	--	--	p
11/18/2003	--	165.14	--	--	--	--	--	--	--	--	--	--	--	--	Well inaccessible e, q
02/23/2004	P	165.14	12.21	--	152.93	7,500	1,500	100	190	350	100	--	SEQM	6.7	
05/04/2004	P	165.14	17.12	--	148.02	5,900	1,500	57	200	280	42	--	SEQM	6.6	
08/04/2004	P	165.14	19.05	--	146.09	<2,500	<25	<25	<25	<25	390	--	SEQM	6.69	

Table 1. Summary of Ground-Water Monitoring Data: Relative Water Elevations and Laboratory Analyses

Station #11132, 3201 35th Ave, Oakland, CA

Well and Sample Date	P/NP	TOC Elevation (feet msl)	Depth to Water (feet bgs)	Product Thickness (feet)	Water Level Elevation (feet msl)	Concentrations in (µg/L)						(mg/L) DO	Lab	pH	Comments
						GRO/TPHg	Benzene	Toluene	Ethyl-Benzene	Total Xylenes	MTBE				
MW-5 Cont.															
11/10/2004	P	165.14	16.95	--	148.19	870	80	<5.0	<5.0	<5.0	530	--	SEQM	7.5	
02/15/2005	P	165.14	12.75	--	152.39	1,600	330	8.0	37	67	260	--	SEQM	7.2	
05/16/2005	P	165.14	15.46	--	149.68	<500	<5.0	<5.0	<5.0	<5.0	370	--	SEQM	6.7	
08/17/2005	P	165.14	17.00	--	148.14	7,000	1,000	17	110	130	51	--	SEQM	6.6	
11/18/2005	P	165.14	18.33	--	146.81	1,900	91	<5.0	33	29	340	--	SEQM	7.3	
02/07/2006	P	165.14	10.27	--	154.87	2,100	590	9.6	86	110	200	--	SEQM	6.7	
5/19/2006	P	165.14	13.08	--	152.06	3,200	720	9.7	150	170	44	--	SEQM	6.8	
8/23/2006	P	165.14	17.02	--	148.12	1,400	69	<5.0	20	24	230	--	TAMC	7.11	
11/15/2006	P	165.14	18.30	--	146.84	1,100	24	<2.5	10	8.6	490	0.85	TAMC	6.82	
2/14/2007	P	165.14	13.16	--	151.98	680	110	<2.5	16	11	420	2.54	TAMC	7.24	
5/22/2007	P	165.14	15.42	--	149.72	2,800	660	8.8	74	100	26	1.41	TAMC	7.03	
MW-6															
7/9/1990	--	165.40	--	--	--	--	--	--	--	--	--	--	--	--	
12/21/1990	--	165.40	--	--	--	0.17	2.6	7	4.9	26	--	--	--	--	
3/7/1991	--	165.40	--	--	--	--	--	--	--	--	--	--	--	--	e
4/1/1991	--	165.40	11.79	--	153.61	--	--	--	--	--	--	--	--	--	
6/27/1991	--	165.40	--	--	--	--	--	--	--	--	--	--	--	--	e
9/27/1991	--	165.40	--	--	--	--	--	--	--	--	--	--	--	--	e
12/18/1991	--	165.40	--	--	--	--	13	22	--	2.7	--	--	--	--	
7/3/1992	--	165.40	17.77	--	147.63	<50	<0.5	<0.5	<0.5	<0.5	--	--	--	--	
10/5/1992	--	165.40	19.46	--	145.94	<50	<0.5	<0.5	<0.5	<0.5	--	--	--	--	
1/13/1993	--	165.40	11.34	--	154.06	<50	<0.5	<0.5	<0.5	<0.5	--	--	--	--	i
4/23/1993	--	165.40	12.92	--	152.48	<50	<0.5	<0.5	<0.5	<0.5	--	--	--	--	i
7/12/1993	--	165.40	17.36	--	148.04	<50	<0.5	<0.5	<0.5	0.7	<5.0	--	--	--	i
10/21/1993	--	165.40	19.98	--	145.42	<50	<0.5	<0.5	<0.5	<0.5	--	--	--	--	i
1/21/1994	--	165.40	18.10	--	147.30	<50	<0.5	<0.5	<0.5	<0.5	<5.0	--	--	--	i
4/20/1994	--	165.40	18.68	--	146.72	<50	<0.5	<0.5	<0.5	<0.5	17.4	2	--	--	i
8/1/1994	--	165.40	18.90	--	146.50	<50	<0.5	<0.5	<0.5	<0.5	8.66	1.5	--	--	i
12/23/1994	--	165.40	12.94	--	152.46	--	--	--	--	--	--	--	--	--	
1/26/1995	--	165.40	10.46	--	154.94	<50	<0.5	<0.5	<0.5	<1	--	7.3	--	--	

Table 1. Summary of Ground-Water Monitoring Data: Relative Water Elevations and Laboratory Analyses

Station #11132, 3201 35th Ave, Oakland, CA

Well and Sample Date	P/NP	TOC Elevation (feet msl)	Depth to Water (feet bgs)	Product Thickness (feet)	Water Level Elevation (feet msl)	Concentrations in (µg/L)						(mg/L) DO	Lab	pH	Comments
						GRO/TPHg	Benzene	Toluene	Ethyl-Benzene	Total Xylenes	MTBE				
MW-6 Cont.															
6/8/1995	--	165.40	16.84	--	148.56	--	--	--	--	--	--	--	--	--	--
8/22/1995	--	165.40	19.48	--	145.92	<50	<0.50	<0.50	<0.50	<1.0	<5.0	6.7	--	--	d
10/27/1995	--	165.40	20.39	--	145.01	--	--	--	--	--	--	--	--	--	--
1/25/1996	--	165.40	12.24	--	153.16	<50	<0.50	<0.50	<0.50	<1.0	9.9	--	--	--	--
4/19/1996	--	165.40	13.90	--	151.50	--	--	--	--	--	--	--	--	--	--
7/23/1996	--	165.40	17.83	--	147.57	--	--	--	--	--	--	--	--	--	--
11/11/1996	--	165.40	18.90	--	146.50	<50	<0.5	<1.0	<1.0	<1.0	<10	7.7	--	--	--
1/21/1997	--	165.40	11.97	--	153.43	--	--	--	--	--	--	--	--	--	--
4/29/1997	--	165.40	17.04	--	148.36	<50	<0.5	<1.0	<1.0	<1.0	<10	4.5	--	--	--
8/21/1997	--	165.40	18.58	--	146.82	--	--	--	--	--	--	--	--	--	--
11/5/1997	--	165.40	19.17	--	146.25	70	<0.5	<1.0	<1.0	<1.0	85	4.3	--	--	--
2/3/1998	--	165.40	9.87	--	155.53	--	--	--	--	--	--	--	--	--	--
5/28/1998	--	165.40	13.38	--	152.02	<50	<0.5	<1.0	<1.0	<1.0	<10	3.7	--	--	--
12/30/1998	--	165.40	14.45	--	150.95	--	--	--	--	--	--	--	--	--	--
2/2/1999	--	165.40	18.29	--	147.11	--	--	--	--	--	--	--	--	--	--
5/10/1999	--	165.40	17.49	--	147.91	--	--	--	--	--	--	--	--	--	--
8/24/1999	--	165.40	17.61	--	147.79	--	--	--	--	--	--	--	--	--	--
11/3/1999	--	165.40	16.26	--	149.14	--	--	--	--	--	--	--	--	--	--
3/1/2000	--	165.40	17.43	--	147.97	--	--	--	--	--	--	--	--	--	--
4/21/2000	--	165.40	13.32	--	152.08	--	--	--	--	--	--	--	--	--	--
7/31/2000	--	165.40	13.46	--	151.94	--	--	--	--	--	--	--	--	--	--
11/20/2000	--	165.40	14.78	--	150.62	--	--	--	--	--	--	--	--	--	--
2/18/2001	--	165.40	11.33	--	154.07	--	--	--	--	--	--	--	--	--	--
6/7/2001	--	165.40	16.36	--	149.04	--	--	--	--	--	--	--	--	--	--
9/5/2001	--	165.40	18.61	--	146.79	--	--	--	--	--	--	--	--	--	--
11/30/2001	--	165.40	15.20	--	150.20	--	--	--	--	--	--	--	--	--	--
2/20/2002	--	165.40	12.74	--	152.66	--	--	--	--	--	--	--	--	--	--
6/20/2002	--	165.40	16.68	--	148.72	--	--	--	--	--	--	--	--	--	--
9/11/2002	--	165.40	18.38	--	147.02	--	--	--	--	--	--	--	--	--	--
11/12/2002	--	165.40	18.78	--	146.62	--	--	--	--	--	--	--	--	--	--
1/29/2003	--	165.40	14.45	--	150.95	--	--	--	--	--	--	--	--	--	n

Table 1. Summary of Ground-Water Monitoring Data: Relative Water Elevations and Laboratory Analyses
Station #11132, 3201 35th Ave, Oakland, CA

Well and Sample Date	P/NP	TOC Elevation (feet msl)	Depth to Water (feet bgs)	Product Thickness (feet)	Water Level Elevation (feet msl)	Concentrations in (µg/L)						(mg/L) DO	Lab	pH	Comments
						GRO/TPHg	Benzene	Toluene	Ethyl-Benzene	Total Xylenes	MTBE				
MW-6 Cont.															
5/22/2003	--	165.40	14.36	--	151.04	--	--	--	--	--	--	--	--	--	
7/28/2003	--	165.40	18.43	--	146.97	--	--	--	--	--	--	--	--	--	p
11/18/2003	--	165.40	17.48	--	147.92	--	--	--	--	--	--	--	--	--	
02/23/2004	--	165.40	11.54	--	153.86	--	--	--	--	--	--	--	--	--	
05/04/2004	--	165.40	16.58	--	148.82	--	--	--	--	--	--	--	--	--	
08/04/2004	--	165.40	18.12	--	147.28	--	--	--	--	--	--	--	--	--	
11/10/2004	--	165.40	15.75	--	149.65	--	--	--	--	--	--	--	--	--	
02/15/2005	--	165.40	12.50	--	152.90	--	--	--	--	--	--	--	--	--	
05/16/2005	P	165.40	11.51	--	153.89	<50	<0.50	<0.50	<0.50	<0.50	<0.50	--	SEQM	7.0	
08/17/2005	--	165.40	16.85	--	148.55	--	--	--	--	--	--	--	--	--	
11/18/2005	--	165.40	--	--	--	--	--	--	--	--	--	--	--	--	e
02/07/2006	P	165.40	9.93	--	155.47	<50	<0.50	<0.50	<0.50	<0.50	<0.50	--	SEQM	7.1	
5/19/2006	--	165.40	--	--	--	--	--	--	--	--	--	--	--	--	e
8/23/2006	--	165.40	16.35	--	149.05	--	--	--	--	--	--	--	--	--	
11/15/2006	--	165.40	17.42	--	147.98	--	--	--	--	--	--	--	--	--	
2/14/2007	P	165.40	12.03	--	153.37	<50	<0.50	<0.50	<0.50	<0.50	<0.50	1.07	TAMC	7.73	
5/22/2007	--	165.40	15.11	--	150.29	--	--	--	--	--	--	--	--	--	
MW-7															
7/9/1990	--	167.61	--	--	--	--	--	--	--	--	--	--	--	--	
12/21/1990	--	167.61	--	--	--	--	--	--	--	--	--	--	--	--	
3/7/1991	--	167.61	19.04	--	148.57	--	--	0.4	0.3	2.4	--	--	--	--	
4/1/1991	--	167.61	15.18	--	152.43	--	--	--	--	--	--	--	--	--	
6/27/1991	--	167.61	--	--	--	70	17	4	0.8	2.2	--	--	--	--	
9/27/1991	--	167.61	--	--	--	--	0.4	--	--	0.4	--	--	--	--	
12/18/1991	--	167.61	--	--	--	--	0.7	2.9	0.8	3.3	--	--	--	--	
7/3/1992	--	167.61	20.28	--	147.33	<50	<0.5	<0.5	<0.5	<0.5	--	--	--	--	
10/5/1992	--	167.61	21.36	--	146.05	<50	<0.5	<0.5	<0.5	1.5	--	--	--	--	
1/13/1993	--	167.61	15.41	--	152.20	<50	<0.5	<0.5	<0.5	<0.5	--	--	--	--	i
4/23/1993	--	167.61	15.84	--	151.77	<50	<0.5	<0.5	<0.5	<0.5	--	--	--	--	i
7/12/1993	--	167.61	19.84	--	147.77	<50	<0.5	<0.5	<0.5	<0.5	<5.0	--	--	--	i

Table 1. Summary of Ground-Water Monitoring Data: Relative Water Elevations and Laboratory Analyses

Station #11132, 3201 35th Ave, Oakland, CA

Well and Sample Date	P/NP	TOC Elevation (feet msl)	Depth to Water (feet bgs)	Product Thickness (feet)	Water Level Elevation (feet msl)	Concentrations in (µg/L)						(mg/L) DO	Lab	pH	Comments
						GRO/TPHg	Benzene	Toluene	Ethyl-Benzene	Total Xylenes	MTBE				
MW-7 Cont.															
10/21/1993	--	167.61	21.61	--	146.00	<50	<0.5	<0.5	<0.5	<0.5	--	--	--	--	
1/21/1994	--	167.61	--	--	--	<50	<0.5	<0.5	<0.5	<0.5	--	--	--	--	c
1/21/1994	--	167.61	20.49	--	147.12	<50	<0.5	<0.5	<0.5	<0.5	<5.0	--	--	--	i
4/20/1994	--	167.61	20.54	--	147.07	<50	<0.5	<0.5	<0.5	<0.5	<5.0	1.5	--	--	i
8/1/1994	--	167.61	20.99	--	146.62	<50	0.7	<0.5	<0.5	<0.5	<5.0	1.9	--	--	i
12/23/1994	--	167.61	15.00	--	152.61	--	--	--	--	--	--	--	--	--	
1/26/1995	--	167.61	14.69	--	152.92	<50	<0.5	<0.5	<0.5	<1	--	7	--	--	
6/8/1995	--	167.61	19.87	--	147.74	--	--	--	--	--	--	--	--	--	
8/22/1995	--	167.61	21.49	--	146.12	<50	<0.50	<0.50	<0.50	<1.0	<5.0	6.4	--	--	d
10/27/1995	--	167.61	22.53	--	145.08	--	--	--	--	--	--	--	--	--	
1/25/1996	--	167.61	17.21	--	150.40	<50	<0.50	<0.50	<0.50	<1.0	<5.0	--	--	--	
4/19/1996	--	167.61	17.09	--	150.52	--	--	--	--	--	--	--	--	--	
7/23/1996	--	167.61	21.02	--	146.59	--	--	--	--	--	--	--	--	--	
11/11/1996	--	167.61	22.03	--	145.58	<50	<0.5	<1.0	<1.0	<1.0	<10	7.8	--	--	
1/21/1997	--	167.61	15.06	--	152.55	--	--	--	--	--	--	--	--	--	
4/29/1997	--	167.61	20.11	--	147.50	<50	<0.5	<1.0	<1.0	<1.0	<10	4.4	--	--	
8/21/1997	--	167.61	21.59	--	146.02	--	--	--	--	--	--	--	--	--	
11/5/1997	--	167.61	20.05	--	147.56	<50	<0.5	<1.0	<1.0	<1.0	<10	4.4	--	--	
2/3/1998	--	167.61	9.97	--	157.64	--	--	--	--	--	--	--	--	--	
5/28/1998	--	167.61	13.52	--	154.09	<50	<0.5	<1.0	<1.0	<1.0	<10	4.3	--	--	
12/30/1998	--	167.61	18.33	--	149.28	--	--	--	--	--	--	--	--	--	
2/2/1999	--	167.61	12.33	--	155.28	--	--	--	--	--	--	--	--	--	
5/10/1999	--	167.61	13.52	--	154.09	--	--	--	--	--	--	--	--	--	
8/24/1999	--	167.61	14.01	--	153.60	--	--	--	--	--	--	--	--	--	
11/3/1999	--	167.61	19.91	--	147.70	--	--	--	--	--	--	--	--	--	
3/1/2000	--	167.61	19.89	--	147.72	--	--	--	--	--	--	--	--	--	
4/21/2000	--	167.61	17.94	--	149.67	--	--	--	--	--	--	--	--	--	
7/31/2000	--	167.61	17.33	--	150.28	--	--	--	--	--	--	--	--	--	
11/20/2000	--	167.61	18.41	--	149.20	--	--	--	--	--	--	--	--	--	
2/18/2001	--	167.61	15.13	--	152.48	--	--	--	--	--	--	--	--	--	
6/7/2001	--	167.61	18.75	--	148.86	--	--	--	--	--	--	--	--	--	

Table 1. Summary of Ground-Water Monitoring Data: Relative Water Elevations and Laboratory Analyses

Station #11132, 3201 35th Ave, Oakland, CA

Well and Sample Date	P/NP	TOC Elevation (feet msl)	Depth to Water (feet bgs)	Product Thickness (feet)	Water Level Elevation (feet msl)	Concentrations in (µg/L)						(mg/L) DO	Lab	pH	Comments
						GRO/TPHg	Benzene	Toluene	Ethyl-Benzene	Total Xylenes	MTBE				
MW-7 Cont.															
9/5/2001	--	167.61	20.48	--	147.13	--	--	--	--	--	--	--	--	--	
11/30/2001	--	167.61	20.11	--	147.50	--	--	--	--	--	--	--	--	--	
2/20/2002	--	167.61	18.40	--	149.21	--	--	--	--	--	--	--	--	--	
6/20/2002	--	167.61	18.62	--	148.99	--	--	--	--	--	--	--	--	--	
9/11/2002	--	167.61	20.05	--	147.56	--	--	--	--	--	--	--	--	--	
11/12/2002	--	167.61	21.13	--	146.48	--	--	--	--	--	--	--	--	--	n
1/29/2003	--	167.61	19.10	--	148.51	--	--	--	--	--	--	--	--	--	
5/22/2003	--	167.61	18.83	--	148.78	--	--	--	--	--	--	--	--	--	
7/28/2003	--	167.61	19.88	--	147.73	--	--	--	--	--	--	--	--	--	p
11/18/2003	--	167.61	20.50	--	147.11	--	--	--	--	--	--	--	--	--	s
1/18/2003	--	168.08	20.50	--	147.58	--	--	--	--	--	--	--	--	--	
02/23/2004	--	168.08	15.92	--	152.16	--	--	--	--	--	--	--	--	--	
05/04/2004	--	168.08	18.86	--	149.22	--	--	--	--	--	--	--	--	--	
08/04/2004	--	168.08	19.10	--	148.98	--	--	--	--	--	--	--	--	--	
11/10/2004	--	168.08	20.25	--	147.83	--	--	--	--	--	--	--	--	--	
02/15/2005	--	168.08	16.37	--	151.71	--	--	--	--	--	--	--	--	--	
05/16/2005	--	168.08	--	--	--	--	--	--	--	--	--	--	--	--	e
08/17/2005	--	168.08	19.74	--	148.34	--	--	--	--	--	--	--	--	--	
11/18/2005	--	168.08	20.82	--	147.26	--	--	--	--	--	--	--	--	--	
02/07/2006	P	168.08	14.26	--	153.82	<500	<5.0	<5.0	<5.0	<5.0	270	--	SEQM	7.3	
5/19/2006	--	168.08	16.51	--	151.57	--	--	--	--	--	--	--	--	--	
8/23/2006	--	168.08	20.30	--	147.78	--	--	--	--	--	--	--	--	--	
11/15/2006	--	168.08	20.85	--	147.23	--	--	--	--	--	--	--	--	--	
2/14/2007	P	168.08	16.57	--	151.51	520	<5.0	<5.0	<5.0	<5.0	740	3.08	TAMC	7.30	v
5/22/2007	--	168.08	18.40	--	149.68	--	--	--	--	--	--	--	--	--	
MW-8															
3/7/1991	--	165.74	16.72	--	149.02	27	780	450	64	310	--	--	--	--	
4/1/1991	--	165.74	12.54	--	153.20	15,000	3,600	2,600	410	1,900	--	--	--	--	
6/27/1991	--	165.74	--	--	--	12,000	3,400	1,100	240	750	--	--	--	--	
9/27/1991	--	165.74	--	--	--	41	5,700	5,200	1,100	4,300	--	--	--	--	

Table 1. Summary of Ground-Water Monitoring Data: Relative Water Elevations and Laboratory Analyses
Station #11132, 3201 35th Ave, Oakland, CA

Well and Sample Date	P/NP	TOC Elevation (feet msf)	Depth to Water (feet bgs)	Product Thickness (feet)	Water Level Elevation (feet msf)	Concentrations in (µg/L)						(mg/L) DO	Lab	pH	Comments
						GRO/TPHg	Benzene	Toluene	Ethyl-Benzene	Total Xylenes	MTBE				
MW-8 Cont.															
12/18/1991	--	165.74	--	--	--	32	990	150	120	250	--	--	--	--	
7/3/1992	--	165.74	18.78	--	146.96	72,000	19,000	32,000	3,000	15,000	--	--	--	--	
10/5/1992	--	165.74	20.48	--	145.26	--	--	--	--	--	--	--	--	--	
1/13/1993	--	165.74	12.87	--	152.87	--	--	--	--	--	--	--	--	--	
4/23/1993	--	165.74	13.90	--	151.84	--	--	--	--	--	--	--	--	--	
7/12/1993	--	165.74	18.30	--	147.44	--	--	--	--	--	--	--	--	--	t
10/21/1993	--	165.74	21.91	--	142.88	--	--	--	--	--	--	--	--	--	
10/2/93-12/9/98	--	165.74	--	0.12	--	--	--	--	--	--	--	--	--	--	
1/21/1994	--	165.74	19.12	--	146.62	--	--	--	--	--	--	--	--	--	
4/20/1994	--	165.74	19.28	--	146.46	26,000	1,700	4,100	960	4,000	632	1.1	--	--	i
8/1/1994	--	165.74	--	--	--	--	--	--	--	--	--	--	--	--	
12/23/1994	--	165.74	13.81	--	151.93	--	--	--	--	--	--	--	--	--	
1/26/1995	--	165.74	--	--	--	--	--	--	--	--	--	--	--	--	
6/8/1995	--	165.74	17.82	--	147.92	--	--	--	--	--	--	--	--	--	
8/22/1995	--	165.74	19.41	--	146.33	--	--	--	--	--	--	--	--	--	
10/27/1995	--	165.74	20.47	--	145.27	--	--	--	--	--	--	--	--	--	
1/25/1996	--	165.74	13.35	--	152.39	--	--	--	--	--	--	--	--	--	
4/19/1996	--	165.74	14.40	--	151.34	--	--	--	--	--	--	--	--	--	
7/23/1996	--	165.74	18.35	--	147.39	--	--	--	--	--	--	--	--	--	
11/11/1996	--	165.74	19.41	--	146.33	--	--	--	--	--	--	--	--	--	
1/21/1997	--	165.74	12.29	--	153.45	--	--	--	--	--	--	--	--	--	
4/29/1997	--	165.74	--	--	--	--	--	--	--	--	--	--	--	--	e
8/21/1997	--	165.74	19.61	--	146.13	240,000	1,100	9,300	4,100	31,100	<1000	5.2	--	--	
11/5/1997	--	165.74	19.45	--	146.29	57,000	790	2,700	2,300	15,200	<1000	5	--	--	
2/3/1998	--	165.74	9.33	--	156.41	--	--	--	--	--	--	--	--	--	
2/4/1998	--	165.74	--	--	--	94,000	570	1,500	2,100	15,200	<2500	5.5	--	--	
5/28/1998	--	165.74	--	--	--	--	--	--	--	--	--	--	--	--	e
12/30/1998	--	165.74	15.48	--	150.26	120,000	460	2,300	2,200	15,000	150	--	--	--	
2/2/1999	--	165.74	18.29	--	147.45	82,000	450	2,200	3,700	26,000	<500	--	--	--	
5/10/1999	--	165.74	15.62	--	150.12	28,000	740	1,800	1,100	5,800	<25	--	--	--	
8/24/1999	--	165.74	18.41	--	147.33	75,000	530	1,400	3,300	21,000	150	--	--	--	

Table 1. Summary of Ground-Water Monitoring Data: Relative Water Elevations and Laboratory Analyses

Station #11132, 3201 35th Ave, Oakland, CA

Well and Sample Date	P/NP	TOC Elevation (feet msl)	Depth to Water (feet bgs)	Product Thickness (feet)	Water Level Elevation (feet msl)	Concentrations in (µg/L)						(mg/L) DO	Lab	pH	Comments
						GRO/TPHg	Benzene	Toluene	Ethyl-Benzene	Total Xylenes	MTBE				
MW-8 Cont.															
11/3/1999	--	165.74	18.71	--	147.03	70,000	600	1,300	3,600	20,500	750	--	--	--	
3/1/2000	--	165.74	19.37	--	146.37	27,000	1,600	1,200	2,600	6,600	120	--	--	--	
4/21/2000	--	165.74	--	--	--	--	--	--	--	--	--	--	--	--	e
7/31/2000	--	165.74	--	--	--	--	--	--	--	--	--	--	--	--	e
11/20/2000	--	165.74	17.42	--	148.32	1,300,000	1,400	1,700	20,000	16,000	5,700	--	--	--	
2/18/2001	--	165.74	--	--	--	--	--	--	--	--	--	--	--	--	e
6/7/2001	--	165.74	--	--	--	--	--	--	--	--	--	--	--	--	e
9/5/2001	--	165.74	21.45	0.04	144.25	--	--	--	--	--	--	--	--	--	j
11/30/2001	--	165.74	18.31	--	147.43	--	--	--	--	--	--	--	--	--	h
12/6/2001	--	165.74	--	--	--	--	--	--	--	--	--	--	--	--	e
2/20/2002	--	165.74	14.02	--	151.72	20,000	163	114	403	3,810	80.4	--	--	--	
6/20/2002	--	165.74	17.56	--	148.18	28,000	466	141	962	5,850	2,520	--	--	--	
9/11/2002	--	165.74	19.45	--	146.29	190,000	1,500	670	4,500	23,000	1,200	--	--	--	
11/12/2002	--	165.74	19.15	--	146.59	420	6.4	2.9	16	110	31	--	--	--	t
1/29/2003	--	165.74	15.02	--	150.72	200,000	810	<500	2,000	11,000	<500	--	--	--	n
5/22/2003	--	165.74	15.07	--	150.67	--	--	--	--	--	--	--	--	--	t
6/24/2003	--	165.74	17.95	--	147.79	43,000	860	300	2,100	9,600	46	--	--	--	
7/28/2003	--	165.74	19.45	--	146.29	62,000	690	230	1,800	15,000	2,100	--	--	--	
8/12/2003	--	165.74	19.40	<0.01	146.34	--	--	--	--	--	--	--	--	--	o,p
9/12/2003	--	165.74	19.34	--	146.40	--	--	--	--	--	--	--	--	--	o
10/3/2003	--	165.74	--	<0.01	--	--	--	--	--	--	--	--	--	--	
11/18/2003	P	165.74	18.80	<0.01	146.94	8,800	500	37	530	930	1,700	--	SEQM	--	o,p
12/31/2003	--	165.74	--	<0.01	--	--	--	--	--	--	--	--	--	--	
2/2/2004	--	165.74	--	<0.01	--	--	--	--	--	--	--	--	--	--	
02/23/2004	P	165.74	12.82	<0.01	152.92	32,000	840	360	1,000	7,100	110	--	SEQM	6.6	t
3/18/2004	--	165.74	--	<0.01	--	--	--	--	--	--	--	--	--	--	
4/13/2004	--	165.74	--	<0.01	--	--	--	--	--	--	--	--	--	--	
05/04/2004	P	165.74	18.87	<0.01	146.87	42,000	570	230	1,700	8,400	2,000	--	SEQM	7.0	t
6/2/2004	--	165.74	--	<0.01	--	--	--	--	--	--	--	--	--	--	
08/04/2004	--	165.74	19.37	0.05	146.41	--	--	--	--	--	--	--	--	--	
09/22/2004	NP	165.74	19.60	--	146.14	--	--	--	--	--	--	--	--	--	

Table 1. Summary of Ground-Water Monitoring Data: Relative Water Elevations and Laboratory Analyses

Station #11132, 3201 35th Ave, Oakland, CA

Well and Sample Date	P/NP	TOC Elevation (feet msl)	Depth to Water (feet bgs)	Product Thickness (feet)	Water Level Elevation (feet msl)	Concentrations in (µg/L)						(mg/L) DO	Lab	pH	Comments
						GRO/TPHg	Benzene	Toluene	Ethyl-Benzene	Total Xylenes	MTBE				
MW-8 Cont.															
11/10/2004	P	165.74	16.58	--	149.16	11,000	790	61	1,000	830	74	--	SEQM	7.3	t
02/15/2005	P	165.74	12.85	--	152.89	38,000	1,300	390	2,300	7,900	<50	--	SEQM	7.2	
05/16/2005	P	165.74	12.22	--	153.52	31,000	1,000	360	2,500	7,500	<50	--	SEQM	6.5	
08/17/2005	P	165.74	17.80	--	147.94	60,000	540	240	2,500	8,600	<50	--	SEQM	6.7	
11/18/2005	P	165.74	21.02	--	144.72	33,000	340	120	1,400	4,900	140	--	SEQM	6.9	
02/07/2006	P	165.74	10.73	--	155.01	5,700	94	27	260	820	7.5	--	SEQM	6.6	
5/19/2006	P	165.74	13.89	--	151.85	40,000	1,100	320	2,900	6,000	<25	--	SEQM	6.6	t
8/23/2006	P	165.74	18.85	--	146.89	21,000	520	150	1,800	6,300	82	--	TAMC	7.35	
11/15/2006	P	165.74	18.75	--	146.99	3,300	81	<25	130	430	110	0.81	TAMC	6.91	
2/14/2007	P	165.74	13.45	SHEEN	152.29	9,300	320	<25	360	710	82	1.89	TAMC	7.13	t
5/22/2007	P	165.74	15.92	SHEEN	149.82	17,000	370	51	760	1,600	11	1.05	TAMC	6.99	t
MW-9															
3/7/1991	--	166.20	16.79	--	149.41	7.1	220	4	24	2,400	--	--	--	--	
4/1/1991	--	166.20	12.89	--	153.31	12,000	2,000	2,600	360	1,600	--	--	--	--	
6/27/1991	--	166.20	--	--	--	3,600	520	400	85	310	--	--	--	--	
9/27/1991	--	166.20	--	--	--	3.2	720	150	50	180	--	--	--	--	
12/18/1991	--	166.20	--	--	--	--	2.5	11	0.3	5.8	--	--	--	--	
7/3/1992	--	166.20	18.89	--	147.31	5,700	17,000	840	230	800	--	--	--	--	
10/5/1992	--	166.20	20.52	--	145.68	1,400	440	17	14	100	--	--	--	--	
1/13/1993	--	166.20	--	--	--	11,000	1,200	1,600	330	1,300	--	--	--	--	c,i
1/13/1993	--	166.20	12.92	--	153.28	11,000	1,200	1,700	340	1,400	--	--	--	--	i
4/23/1993	--	166.20	14.08	--	152.12	24,000	2,800	4,500	730	3,400	--	--	--	--	i
7/12/1993	--	166.20	18.44	--	147.76	13,000	1,400	1,100	360	1,400	20.8	--	--	--	i
7/12/1993	--	166.20	--	--	--	10,000	1,200	900	310	1,200	--	--	--	--	c
10/21/1993	--	166.20	21.81	--	143.50	--	--	--	--	--	--	--	--	--	
11/2/93-4/29/97	--	166.20	--	0.10	--	--	--	--	--	--	--	--	--	--	
1/21/1994	--	166.20	19.28	--	146.92	--	--	--	--	--	--	--	--	--	
4/20/1994	--	166.20	19.72	--	146.48	43,000	2,800	6,800	1,300	7,900	768	1.7	--	--	i
4/20/1994	--	166.20	--	--	--	45,000	2,700	6,800	1,200	8,200	740	--	--	--	c,d
8/1/1994	--	166.20	20.18	--	146.02	--	--	--	--	--	--	--	--	--	

Table 1. Summary of Ground-Water Monitoring Data: Relative Water Elevations and Laboratory Analyses

Station #11132, 3201 35th Ave, Oakland, CA

Well and Sample Date	P/NP	TOC Elevation (feet msl)	Depth to Water (feet bgs)	Product Thickness (feet)	Water Level Elevation (feet msl)	Concentrations in (µg/L)						(mg/L) DO	Lab	pH	Comments
						GRO/TPHg	Benzene	Toluene	Ethyl-Benzene	Total Xylenes	MTBE				
MW-9 Cont.															
12/23/1994	--	166.20	14.22	--	151.98	--	--	--	--	--	--	--	--	--	
1/26/1995	--	166.20	11.85	--	154.35	--	--	--	--	--	--	--	--	--	
6/8/1995	--	166.20	18.35	--	147.87	--	--	--	--	--	--	--	--	--	
8/22/1995	--	166.20	19.95	--	146.25	--	--	--	--	--	--	--	--	--	
10/27/1995	--	166.20	20.88	--	145.32	--	--	--	--	--	--	--	--	--	
1/25/1996	--	166.20	13.84	--	152.36	--	--	--	--	--	--	--	--	--	
4/19/1996	--	166.20		--		--	--	--	--	--	--	--	--	--	c
7/23/1996	--	166.20	18.84	--	147.36	--	--	--	--	--	--	--	--	--	
11/11/1996	--	166.20	19.91	--	146.29	--	--	--	--	--	--	--	--	--	
1/21/1997	--	166.20	12.93	--	153.27	--	--	--	--	--	--	--	--	--	
4/29/1997	--	166.20	18.03	0.1	148.17	--	--	--	--	--	--	--	--	--	t
4/30/1997	--	166.20	--	--	--	78,000	1,900	3,600	3,100	20,600	<5000	5.5	--	--	
8/21/1997	--	166.20	19.56	--	146.64	110,000	2,100	3,400	2,500	18,800	<500	5.1	--	--	
11/5/1997	--	166.20	20.59	0.01	145.60	59,000	1,400	1,700	2,200	17,000	<500	4.5	--	--	
2/3/1998	--	166.20	10.56	--	155.64	55,000	490	1,200	1,400	10,200	<1000	4.9	--	--	
5/28/1998	--	166.20	--	--	--	53,000	290	830	1,400	10,500	<500	--	--	--	c
5/28/1998	--	166.20	14.21	--	151.99	41,000	250	1,200	1,500	11,400	<250	3.8	--	--	
12/30/1998	--	166.20	15.61	--	150.59	83,000	860	1,300	2,400	21,000	180	--	--	--	
2/2/1999	--	166.20	12.33	--	153.87	75,000	530	960	1,900	17,000	<50	--	--	--	
5/10/1999	--	166.20	15.67	--	150.53	22,000	600	1,500	1,100	4,400	72	--	--	--	
8/24/1999	--	166.20	19.10	--	147.10	85,000	850	1,300	1,700	20,000	<250	--	--	--	
11/3/1999	--	166.20	19.58	--	146.62	72,000	700	780	1,900	19,000	<5.0	--	--	--	
3/1/2000	--	166.20	13.19	--	153.01	34,000	78	490	1,100	8,200	63	--	--	--	
4/21/2000	--	166.20	14.29	--	151.91	55,000	260	920	1,500	16,000	<5.0	--	--	--	
7/31/2000	--	166.20	15.01	--	151.19	1,200,000	1,500	6,300	15,000	120,000	1,600	--	--	--	
11/20/2000	--	166.20	18.23	--	147.97	320,000	3,500	19,000	5,000	40,000	3,900	--	--	--	
2/18/2001	--	166.20	13.14	--	153.06	32,000	290	417	1,180	10,400	121	--	--	--	
6/7/2001	--	166.20	17.41	--	148.79	96,000	421	704	2,330	17,300	223	--	--	--	
9/5/2001	--	166.20	20.56	--	145.64	39,000	445	323	1,240	8,940	310	--	--	--	
11/30/2001	--	166.20	17.42	--	148.78	60,000	310	586	1,890	14,200	285	--	--	--	
2/20/2002	--	166.20	13.87	--	152.33	14,000	64	122	897	2,650	293	--	--	--	

Table 1. Summary of Ground-Water Monitoring Data: Relative Water Elevations and Laboratory Analyses

Station #11132, 3201 35th Ave, Oakland, CA

Well and Sample Date	P/NP	TOC Elevation (feet msl)	Depth to Water (feet bgs)	Product Thickness (feet)	Water Level Elevation (feet msl)	Concentrations in (µg/L)						(mg/L) DO	Lab	pH	Comments
						GRO/TPHg	Benzene	Toluene	Ethyl-Benzene	Total Xylenes	MTBE				
MW-9 Cont.															
6/20/2002	--	166.20	18.22	--	147.98	29,000	307	168	1,100	5,670	208	--	--	--	
9/11/2002	--	166.20	20.27	--	145.93	230,000	1,400	680	3,600	23,000	<2500	--	--	--	
11/13/2002	--	166.20	19.40	--	146.80	840	5.8	3.6	28	160	21	--	--	--	t
1/29/2003	--	166.20	14.30	0.1	151.80	--	--	--	--	--	--	--	--	--	j,n
5/22/2003	--	166.20	15.16	--	151.04	25,000	260	<50	1,000	2,900	<50	--	--	--	t
6/24/2003	--	166.20	--	--	--	--	--	--	--	--	--	--	--	--	e
7/28/2003	--	166.20	19.55	<0.01	146.65	1,500,000	<500	<500	9,800	79,000	<500	--	--	--	
8/12/2003	--	166.20	19.60	<0.01	146.60	--	--	--	--	--	--	--	--	--	o,t
9/12/2003	--	166.20	19.60	<0.01	146.60	--	--	--	--	--	--	--	--	--	o,t
11/18/2003	P	166.20	18.98	<0.01	147.22	19,000	250	18	690	2,400	45	--	SEQM	6.8	o,p
12/31/2003	--	166.20	--	<0.01	--	--	--	--	--	--	--	--	--	--	
2/2/2004	--	166.20	--	<0.01	--	--	--	--	--	--	--	--	--	--	
02/23/2004	P	166.20	13.91	<0.01	152.29	91,000	<250	440	2,200	13,000	<250	--	SEQM	6.8	t
3/18/2004	--	166.20	--	<0.01	--	--	--	--	--	--	--	--	--	--	
4/13/2004	--	166.20	--	<0.01	--	--	--	--	--	--	--	--	--	--	
05/04/2004	P	166.20	18.11	<0.01	148.09	39,000	230	44	1,100	4,200	<25	--	SEQM	6.9	t
6/2/2004	--	166.20	--	<0.01	--	--	--	--	--	--	--	--	--	--	
08/04/2004	--	166.20	18.90	0.03	147.32	--	--	--	--	--	--	--	--	--	
09/22/2004	NP	166.20	19.69	--	146.51	--	--	--	--	--	--	--	--	--	
11/10/2004	NP	166.20	16.95	--	149.25	31,000	300	<50	1,100	3,800	<50	--	SEQM	7.3	t
02/15/2005	P	166.20	12.95	--	153.25	19,000	200	<50	720	2,000	<50	--	SEQM	7.3	t
05/16/2005	P	166.20	12.53	--	153.67	17,000	99	15	770	2,500	<10	--	SEQM	6.7	
08/17/2005	P	166.20	18.03	--	148.17	28,000	160	26	1,000	2,700	<12	--	SEQM	6.8	
11/18/2005	P	166.20	19.04	--	147.16	12,000	98	<5.0	410	510	19	--	SEQM	7.1	
02/07/2006	P	166.20	10.95	SHEEN	155.25	18,000	110	8.7	770	1,500	<5.0	--	SEQM	6.9	t
5/19/2006	--	166.20	--	--	--	--	--	--	--	--	--	--	--	--	e
8/23/2006	P	166.20	18.91	--	147.29	28,000	84	<50	1,600	6,200	<50	--	TAMC	7.3	
11/15/2006	P	166.20	18.60	--	147.60	8,200	44	<25	190	370	26	0.92	TAMC	6.88	
2/14/2007	P	166.20	13.30	--	152.90	20,000	64	<25	720	2,000	<25	0.87	TAMC	7.17	t
5/22/2007	P	166.20	16.14	SHEEN	150.06	16,000	80	<25	460	1,200	<25	0.81	TAMC	7.08	t

Table 1. Summary of Ground-Water Monitoring Data: Relative Water Elevations and Laboratory Analyses
Station #11132, 3201 35th Ave, Oakland, CA

Well and Sample Date	P/NP	TOC Elevation (feet msl)	Depth to Water (feet bgs)	Product Thickness (feet)	Water Level Elevation (feet msl)	Concentrations in (µg/L)						(mg/L) DO	Lab	pH	Comments
						GRO/TPHg	Benzene	Toluene	Ethyl-Benzene	Total Xylenes	MTBE				
MW-10															
3/7/1991	--	167.01	18.09	--	148.92	1.6	120	190	32	230	--	--	--	--	
4/1/1991	--	167.01	13.92	--	153.09	--	--	--	--	--	--	--	--	--	
6/27/1991	--	167.01	--	--	--	12,000	7,300	500	150	300	--	--	--	--	
9/27/1991	--	167.01	--	--	--	57	12,000	7,200	1,400	4,600	--	--	--	--	
12/18/1991	--	167.01	--	--	--	5.3	2,500	120	36	79	--	--	--	--	
7/3/1992	--	167.01	19.92	--	147.09	8,600	5,100	1,300	180	690	--	--	--	--	
10/5/1992	--	167.01	21.92	--	145.09	--	--	--	--	--	--	--	--	--	
1/13/1993	--	167.01	14.43	--	152.58	--	--	--	--	--	--	--	--	--	
4/23/1993	--	167.01	15.26	--	151.75	--	--	--	--	--	--	--	--	--	
7/12/1993	--	167.01	19.78	--	147.23	--	--	--	--	--	--	--	--	--	
10/21/1993	--	167.01	22.90	--	144.11	--	--	--	--	--	--	--	--	--	
1/21/1994	--	167.01	20.25	--	146.76	--	--	--	--	--	--	--	--	--	
4/20/1994	--	167.01	20.74	--	146.27	100,000	12,000	24,000	2,400	14,000	1,577	1	--	--	d
8/1/1994	--	167.01	22.00	--	145.01	--	--	--	--	--	--	--	--	--	
12/23/1994	--	167.01	16.08	--	150.93	--	--	--	--	--	--	--	--	--	
1/26/1995	--	167.01	13.68	--	153.33	--	--	--	--	--	--	--	--	--	
6/8/1995	--	167.01	19.08	--	147.93	--	--	--	--	--	--	--	--	--	
8/22/1995	--	167.01	20.73	--	146.28	--	--	--	--	--	--	--	--	--	
10/27/1995	--	167.01	21.69	--	145.32	--	--	--	--	--	--	--	--	--	
1/25/1996	--	167.01	15.05	--	151.96	--	--	--	--	--	--	--	--	--	
4/19/1996	--	167.01	16.26	--	150.75	--	--	--	--	--	--	--	--	--	
7/23/1996	--	167.01	20.18	--	146.83	--	--	--	--	--	--	--	--	--	
9/4/1996	--	167.01	--	0.76	--	--	--	--	--	--	--	--	--	--	
11/11/1996	--	167.01	21.20	--	145.81	--	--	--	--	--	--	--	--	--	
1/21/1997	--	167.01	13.66	--	153.35	--	--	--	--	--	--	--	--	--	
4/29/1997	--	167.01	18.71	--	148.30	--	--	--	--	--	--	--	--	--	
4/30/1997	--	167.01	--	--	--	170,000	9,700	38,000	4,700	30,500	<5000	5.6	--	--	
8/21/1997	--	167.01	20.19	--	146.82	170,000	9,500	35,000	4,300	27,100	<5000	5.3	--	--	
11/5/1997	--	167.01	20.52	--	146.49	80,000	3,800	12,000	2,700	15,700	<500	4.4	--	--	
12/2/1997	--	167.01	--	0.03	--	--	--	--	--	--	--	--	--	--	
2/3/1998	--	167.01	10.62	--	156.39	--	--	--	--	--	--	--	--	--	

Table 1. Summary of Ground-Water Monitoring Data: Relative Water Elevations and Laboratory Analyses
Station #11132, 3201 35th Ave, Oakland, CA

Well and Sample Date	P/NP	TOC Elevation (feet msl)	Depth to Water (feet bgs)	Product Thickness (feet)	Water Level Elevation (feet msl)	Concentrations in (µg/L)						(mg/L) DO	Lab	pH	Comments
						GRO/TPHg	Benzene	Toluene	Ethyl-Benzene	Total Xylenes	MTBE				
MW-10 Cont.															
2/4/1998	--	167.01	--	--	--	72,000	500	1,500	1,700	12,000	<1000	5.1	--	--	
5/28/1998	--	167.01	15.46	--	151.55	220,000	3,200	24,000	5,200	43,000	<1000	4.8	--	--	
12/30/1998	--	167.01	16.65	--	150.36	110,000	3,500	14,000	5,800	50,000	<50	--	--	--	
2/2/1999	--	167.01	14.58	--	152.43	74,000	1,000	2,800	1,000	26,000	860	--	--	--	
5/10/1999	--	167.01	15.72	--	151.29	81,000	2,800	2,800	3,000	17,000	220	--	--	--	
8/24/1999	--	167.01	19.85	--	147.16	54,000	3,500	3,800	1,500	9,100	<250	--	--	--	
11/3/1999	--	167.01	20.00	--	147.01	30,000	3,000	3,500	1,200	5,000	31	--	--	--	
3/1/2000	--	167.01	14.62	--	152.39	62,000	320	1,200	1,100	26,000	4,400	--	--	--	
4/21/2000	--	167.01	15.46	--	151.55	88,000	2,700	7,400	3,700	35,000	2,400	--	--	--	
7/31/2000	--	167.01	--	--	--	--	--	--	--	--	--	--	--	--	e
11/20/2000	--	167.01	18.74	--	148.27	78,000	3,800	5,500	2,800	13,000	450	--	--	--	
2/18/2001	--	167.01	14.10	--	152.91	39,000	1,050	1,160	1,550	14,700	4,180	--	--	--	
6/7/2001	--	167.01	18.78	--	148.23	76,000	2,460	2,840	3,330	20,700	635	--	--	--	
9/5/2001	--	167.01	21.40	0.01	145.60	25,000	2,510	2,070	1,090	4,540	189	--	--	--	
11/30/2001	--	167.01	18.50	--	148.51	100,000	2,480	5,720	3,890	22,800	325	--	--	--	
2/20/2002	--	167.01	14.39	--	152.62	49,000	2,170	3,070	1,960	12,300	1,090	--	--	--	
6/20/2002	--	167.01	18.80	--	148.21	44,000	2,040	3,050	1,690	8,430	224	--	--	--	
9/11/2002	--	167.01	20.52	--	146.49	28,000	1,200	2,700	1,400	6,800	<250	--	--	--	
11/12/2002	--	167.01	20.37	0.07	146.57	--	--	--	--	--	--	--	--	--	j
1/29/2003	--	167.01	16.33	0.03	150.65	--	--	--	--	--	--	--	--	--	j,n
5/22/2003	--	167.01	16.32	--	150.69	13,000	2,100	850	630	1,600	300	--	--	--	r
6/24/2003	--	167.01	18.73	0.04	148.24	--	--	--	--	--	--	--	--	--	o
7/28/2003	--	167.01	20.39	0.04	146.58	--	--	--	--	--	--	--	--	--	j
8/12/2003	--	167.01	20.43	<0.01	146.58	--	--	--	--	--	--	--	--	--	o,t
9/12/2003	--	167.01	20.41	--	146.60	--	--	--	--	--	--	--	--	--	o
10/3/2003	--	167.01	--	<0.01	--	--	--	--	--	--	--	--	--	--	
11/18/2003	P	167.01	19.55	<0.01	147.46	9,900	2,200	530	320	860	<50	--	SEQM	6.8	o,p
12/31/2003	--	167.01	--	<0.01	--	--	--	--	--	--	--	--	--	--	
2/2/2004	--	167.01	--	<0.01	--	--	--	--	--	--	--	--	--	--	
02/23/2004	P	167.01	15.45	<0.01	151.56	46,000	1,900	2,000	1,800	9,000	180	--	SEQM	6.7	t
3/18/2004	--	167.01	--	<0.01	--	--	--	--	--	--	--	--	--	--	

Table 1. Summary of Ground-Water Monitoring Data: Relative Water Elevations and Laboratory Analyses

Station #11132, 3201 35th Ave, Oakland, CA

Well and Sample Date	P/NP	TOC Elevation (feet msl)	Depth to Water (feet bgs)	Product Thickness (feet)	Water Level Elevation (feet msl)	Concentrations in (µg/L)						(mg/L) DO	Lab	pH	Comments
						GRO/TPHg	Benzene	Toluene	Ethyl-Benzene	Total Xylenes	MTBE				
MW-10 Cont.															
4/13/2004	--	167.01	--	<0.01	--	--	--	--	--	--	--	--	--	--	--
05/04/2004	P	167.01	18.81	<0.01	148.20	35,000	3,100	3,600	1,400	5,600	<25	--	SEQM	7.1	t
6/2/2004	--	167.01	--	<0.01	--	--	--	--	--	--	--	--	--	--	--
7/2/2004	--	167.01	--	<0.01	--	--	--	--	--	--	--	--	--	--	--
08/04/2004	--	167.01	18.90	--	148.11	--	--	--	--	--	--	--	--	--	--
09/22/2004	NP	167.01	20.60	--	146.41	--	--	--	--	--	--	--	--	--	--
11/10/2004	P	167.01	17.95	--	149.06	9,800	470	91	450	1,700	230	--	SEQM	7.3	t
01/13/2005	--	167.01	12.21	--	154.80	--	--	--	--	--	--	--	--	--	--
02/15/2005	P	167.01	14.19	--	152.82	30,000	510	330	1,800	7,200	77	--	SEQM	7.2	--
05/16/2005	P	167.01	13.85	--	153.16	37,000	540	730	2,100	9,200	<50	--	SEQM	6.7	--
08/17/2005	P	167.01	19.01	--	148.00	15,000	1,100	420	1,200	4,100	<50	--	SEQM	6.7	--
11/18/2005	P	167.01	19.95	--	147.06	12,000	1,200	240	550	1,300	16	--	SEQM	6.8	--
02/07/2006	P	167.01	12.28	SHEEN	154.73	22,000	340	580	1,300	4,500	73	--	SEQM	6.8	t
5/19/2006	P	167.01	15.12	--	151.89	40,000	690	430	2,600	4,900	<25	--	SEQM	6.9	t
8/23/2006	P	167.01	20.00	--	147.01	13,000	1,500	540	1,200	3,000	<10	--	TAMC	6.97	--
11/15/2006	P	167.01	19.84	--	147.17	3,800	700	22	67	160	54	0.65	TAMC	6.78	--
2/14/2007	P	167.01	14.94	SHEEN	152.07	37,000	350	120	2,400	8,100	120	2.12	TAMC	7.05	t
5/22/2007	P	167.01	17.17	SHEEN	149.84	13,000	810	130	750	2,200	15	0.06	TAMC	7.10	t
QC-2															
10/5/1992	--	168.01	--	--	--	<50	<0.5	<0.5	<0.5	<0.5	--	--	--	--	f
1/13/1993	--	168.01	--	--	--	<50	<0.5	<0.5	<0.5	<0.5	--	--	--	--	f,i
4/23/1993	--	168.01	--	--	--	<50	<0.5	<0.5	<0.5	<0.5	--	--	--	--	f,i
7/12/1993	--	168.01	--	--	--	<50	<0.5	<0.5	<0.5	<0.5	--	--	--	--	f
10/21/1993	--	168.01	--	--	--	<50	<0.5	<0.5	<0.5	<0.5	--	--	--	--	f
1/21/1994	--	168.01	--	--	--	<50	<0.5	2.1	<0.5	2.1	--	--	--	--	f
4/20/1994	--	168.01	--	--	--	<50	<0.5	<0.5	<0.5	<0.5	--	--	--	--	f
12/23/1994	--	168.01	--	--	--	<50	<0.5	<0.5	<0.5	<0.5	--	--	--	--	f
1/26/1995	--	168.01	--	--	--	<50	<0.5	<0.5	<0.5	<1.0	--	--	--	--	f
6/8/1995	--	168.01	--	--	--	<50	<0.50	<0.50	<0.50	<1.0	--	--	--	--	f
8/22/1995	--	168.01	--	--	--	<50	<0.50	<0.50	<0.50	<1.0	<5.0	--	--	--	d,f

Table 1. Summary of Ground-Water Monitoring Data: Relative Water Elevations and Laboratory Analyses
Station #11132, 3201 35th Ave, Oakland, CA

Well and Sample Date	P/NP	TOC Elevation (feet msl)	Depth to Water (feet bgs)	Product Thickness (feet)	Water Level Elevation (feet msl)	Concentrations in (µg/L)						(mg/L) DO	Lab	pH	Comments
						GRO/TPHg	Benzene	Toluene	Ethyl-Benzene	Total Xylenes	MTBE				
QC-2 Cont.															
10/30/1995	--	168.01	--	--	--	<50	<0.50	<0.50	<0.50	<1.0	<5.0	--	--	--	f
1/25/1996	--	168.01	--	--	--	<50	<0.50	<0.50	<0.50	<1.0	<5.0	--	--	--	f
4/19/1996	--	168.01	--	--	--	<50	<0.5	<1	<1	<1	<10	--	--	--	f
RW-1															
7/9/1990	--	168.01	--	--	--	--	--	--	--	--	--	--	--	--	
12/21/1990	--	168.01	--	--	--	--	--	--	--	--	--	--	--	--	
3/7/1991	--	168.01	17.62	--	150.39	--	--	--	--	--	--	--	--	--	t
4/1/1991	--	168.01	14.40	--	153.61	--	--	--	--	--	--	--	--	--	
6/27/1991	--	168.01	--	--	--	--	--	--	--	--	--	--	--	--	
9/27/1991	--	168.01	--	--	--	--	--	--	--	--	--	--	--	--	
12/18/1991	--	168.01	--	--	--	--	--	--	--	--	--	--	--	--	
7/3/1992	--	168.01	20.66	--	147.35	--	--	--	--	--	--	--	--	--	t
10/5/1992	--	168.01	23.34	--	144.67	--	--	--	--	--	--	--	--	--	
1/13/1993	--	168.01	16.59	--	151.42	--	--	--	--	--	--	--	--	--	
4/23/1993	--	168.01	16.17	--	151.84	--	--	--	--	--	--	--	--	--	
7/12/1993	--	168.01	20.18	--	147.83	--	--	--	--	--	--	--	--	--	
10/21/1993	--	168.01	25.70	--	142.31	--	--	--	--	--	--	--	--	--	
1/21/1994	--	168.01	21.24	--	146.77	--	--	--	--	--	--	--	--	--	
4/20/1994	--	168.01	32.20	--	135.81	--	--	--	--	--	--	--	--	--	
8/1/1994	--	168.01	21.70	--	146.31	29,000	580	950	300	7,800	1,200	1.1	--	--	d
12/23/1994	--	168.01	16.02	--	151.99	1,300	25	8.6	114	69	616	1.8	--	--	i
1/26/1995	--	168.01	--	--	--	<50	<0.5	<0.5	<0.5	<1	--	--	--	--	c
1/26/1995	--	168.01	13.78	--	154.23	<50	<0.5	<0.5	<0.5	<1	--	--	--	--	
6/8/1995	--	168.01	20.05	--	147.96	1,300	130	<1.0	<1.0	36	--	--	--	--	
8/22/1995	--	168.01	--	--	--	2,800	210	93	43	250	<25	--	--	--	d
8/22/1995	--	168.01	21.74	--	146.27	3,300	230	13	4.9	280	<25	6.6	--	--	d
10/27/1995	--	168.01	32.00	--	136.01	--	--	--	--	--	--	--	--	--	
10/30/1995	--	168.01	--	--	--	230	1.4	<1.0	<1.0	<2.0	650	6.9	--	--	
10/30/1995	--	168.01	--	--	--	240	1.6	<1.0	<1.0	<2.0	630	--	--	--	d
1/25/1996	--	168.01	15.41	--	152.60	15,000	3,400	930	330	2,500	5,300	--	--	--	

Table 1. Summary of Ground-Water Monitoring Data: Relative Water Elevations and Laboratory Analyses

Station #11132, 3201 35th Ave, Oakland, CA

Well and Sample Date	P/NP	TOC Elevation (feet msl)	Depth to Water (feet bgs)	Product Thickness (feet)	Water Level Elevation (feet msl)	Concentrations in (µg/L)						(mg/L) DO	Lab	pH	Comments
						GRO/TPHg	Benzene	Toluene	Ethyl-Benzene	Total Xylenes	MTBE				
RW-1 Cont.															
4/19/1996	--	168.01	--	--	--	33,000	5,600	3,200	1,700	8,800	15,000	--	--	--	c
4/19/1996	--	168.01	16.83	--	151.18	35,000	5,500	3,300	1,700	9,400	14,000	7.6	--	--	
7/23/1996	--	168.01	--	--	--	47,000	3,700	2,500	930	5,300	35,000	--	--	--	c
7/23/1996	--	168.01	20.76	--	147.25	46,000	3,600	2,300	900	5,100	36,000	7.4	--	--	
11/11/1996	--	168.01	21.73	--	146.28	34,000	3,000	1,200	880	4,600	22,000	8.3	--	--	
11/11/1996	--	168.01	--	--	--	31,000	2,900	1,000	860	4,600	22,000	--	--	--	c
1/21/1997	--	168.01	14.20	--	153.81	260	40	16	2.7	34	1,500	6.1	--	--	
1/21/1997	--	168.01	--	--	--	270	42	17	2.7	36	1,500	--	--	--	c
4/29/1997	--	168.01	19.15	--	148.86	32,000	3,100	590	1,300	6,000	46,000	5.3	--	--	
8/21/1997	--	168.01	20.67	--	147.34	7,600	730	58	370	1,780	9,500	4.7	--	--	
11/5/1997	--	168.01	21.01	--	147.00	39,000	2,300	86	1,300	3,840	56,000	4.5	--	--	
2/3/1998	--	168.01	10.68	--	157.33	3,400	31	11	29	161	3,200	5.1	--	--	
5/28/1998	--	168.01	15.55	--	152.46	2,000	90	15	60	305	2,700	4.3	--	--	
12/30/1998	--	168.01	17.35	--	150.66	--	--	--	--	--	--	--	--	--	
2/2/1999	--	168.01	14.58	--	153.43	82,000	2,300	120	2,000	3,200	51,000/78,000	--	--	--	e
5/10/1999	--	168.01	16.00	--	152.01	15,000	620	88	340	660	61,000	--	--	--	
8/24/1999	--	168.01	20.00	--	148.01	52,000	1,400	170	2,200	2,900	37,000	--	--	--	
11/3/1999	--	168.01	20.39	--	147.62	17,000	2,500	86	1,500	970	54,000	--	--	--	
3/1/2000	--	168.01	12.97	--	155.04	17,000	580	78	790	1,100	13,000	--	--	--	
4/21/2000	--	168.01	16.02	--	151.99	31,000	2,100	100	1,400	1,100	39,000	--	--	--	
7/31/2000	--	168.01	21.89	--	146.12	47,000	1,500	170	2,700	2,300	30,000	--	--	--	
11/20/2000	--	168.01	19.15	--	148.86	--	--	--	--	--	--	--	--	--	h
2/18/2001	--	168.01	15.35	--	152.66	14,000	589	89	600	712	13,000	--	--	--	
6/7/2001	--	168.01	19.09	--	148.92	28,000	1,140	68.2	504	530	19,100	--	--	--	
9/5/2001	--	168.01	22.06	0.02	145.93	--	--	--	--	--	--	--	--	--	j
11/30/2001	--	168.01	19.53	--	148.48	20,000	405	39.4	545	740	8,260	--	--	--	
2/20/2002	--	168.01	15.99	--	152.02	13,000	469	29	434	655	7,240	--	--	--	
6/20/2002	--	168.01	19.31	--	148.70	--	--	--	--	--	--	--	--	--	j,i
9/11/2002	--	168.01	21.07	0.03	146.91	--	--	--	--	--	--	--	--	--	j
11/12/2002	--	168.01	20.92	0.02	147.07	--	--	--	--	--	--	--	--	--	j
1/29/2003	--	168.01	16.31	0.04	151.66	--	--	--	--	--	--	--	--	--	j,n

Table 1. Summary of Ground-Water Monitoring Data: Relative Water Elevations and Laboratory Analyses

Station #11132, 3201 35th Ave, Oakland, CA

Well and Sample Date	P/NP	TOC Elevation (feet msl)	Depth to Water (feet bgs)	Product Thickness (feet)	Water Level Elevation (feet msl)	Concentrations in (µg/L)						(mg/L) DO	Lab	pH	Comments
						GRO/TPHg	Benzene	Toluene	Ethyl-Benzene	Total Xylenes	MTBE				
RW-1 Cont.															
5/22/2003	--	168.01	16.68		151.33	--	--	--	--	--	--	--	--	--	j
6/24/2003	--	168.01	19.76	0.07	148.18	--	--	--	--	--	--	--	--	--	o
7/28/2003	--	168.01	21.04	0.04	146.93	--	--	--	--	--	--	--	--	--	j
8/12/2003	--	168.01	21.41	<0.01	146.60	--	--	--	--	--	--	--	--	--	o,t
9/12/2003	--	168.01	21.10	0.07	146.84	--	--	--	--	--	--	--	--	--	o
10/3/2003	--	168.01	--	0.03	--	--	--	--	--	--	--	--	--	--	
11/18/2003	P	168.01	20.10	<0.01	147.91	12,000	770	<50	320	250	6,100	--	SEQM	6.6	o,p
12/31/2003	--	168.01	--	<0.01	--	--	--	--	--	--	--	--	--	--	
02/23/2004	--	168.01	14.35	0.01	153.67	--	--	--	--	--	--	--	--	--	
3/18/2004	--	168.01	--	0.09	--	--	--	--	--	--	--	--	--	--	
4/13/2004	--	168.01	--	0.02	--	--	--	--	--	--	--	--	--	--	
05/04/2004	--	168.01	19.58	0.02	148.45	--	--	--	--	--	--	--	--	--	
6/2/2004	--	168.01	--	0.05	--	--	--	--	--	--	--	--	--	--	
7/2/2004	--	168.01	--	0.11	--	--	--	--	--	--	--	--	--	--	
08/04/2004	--	168.01	22.05	0.05	146.00	--	--	--	--	--	--	--	--	--	
09/22/2004	NP	168.01	21.28	0.06	146.78	--	--	--	--	--	--	--	--	--	
10/26/2004	--	168.01	--	0.01	--	--	--	--	--	--	--	--	--	--	
11/10/2004	--	168.01	18.56	0.02	149.47	--	--	--	--	--	--	--	--	--	
12/27/2004	--	168.01	--	0.03	--	--	--	--	--	--	--	--	--	--	
01/13/2005	--	168.01	12.51	0.01	155.51	--	--	--	--	--	--	--	--	--	
02/15/2005	--	168.01	15.24	0.03	152.79	--	--	--	--	--	--	--	--	--	
03/07/2005	--	168.01	11.90	0.02	156.13	--	--	--	--	--	--	--	--	--	
4/29/2005	--	168.01	--	0.03	--	--	--	--	--	--	--	--	--	--	
05/16/2005	--	168.01	14.39	0.02	153.64	--	--	--	--	--	--	--	--	--	j
6/21/2005	--	168.01	--	0.03	--	--	--	--	--	--	--	--	--	--	
7/7/2005	--	168.01	--	0.06	--	--	--	--	--	--	--	--	--	--	
08/17/2005	--	168.01	19.91	0.03	148.12	--	--	--	--	--	--	--	--	--	j
9/6/2005	--	168.01	--	0.03	--	--	--	--	--	--	--	--	--	--	
10/4/2005	--	168.01	--	0.07	--	--	--	--	--	--	--	--	--	--	
11/18/2005	--	168.01	20.36	0.07	147.71	--	--	--	--	--	--	--	--	--	b, j
12/30/2005	--	168.01	--	0.04	--	--	--	--	--	--	--	--	--	--	

Table 1. Summary of Ground-Water Monitoring Data: Relative Water Elevations and Laboratory Analyses
Station #11132, 3201 35th Ave, Oakland, CA

Well and Sample Date	P/NP	TOC Elevation (feet msl)	Depth to Water (feet bgs)	Product Thickness (feet)	Water Level Elevation (feet msl)	Concentrations in (µg/L)						(mg/L) DO	Lab	pH	Comments
						GRO/TPHg	Benzene	Toluene	Ethyl-Benzene	Total Xylenes	MTBE				
RW-1 Cont.															
1/24/2006	--	168.01	--	0.01	--	--	--	--	--	--	--	--	--	--	j
02/07/2006	--	168.01	12.87	0.01	155.15	--	--	--	--	--	--	--	--	--	
3/30/2006	--	168.01	--	0.02	--	--	--	--	--	--	--	--	--	--	b
5/19/2006	--	168.01	15.87	0.04	152.17	--	--	--	--	--	--	--	--	--	b, j
8/23/2006	--	168.01	20.50	0.07	147.56	--	--	--	--	--	--	--	--	--	b, j
11/15/2006	--	168.01	20.52	0.07	147.54	--	--	--	--	--	--	--	--	--	b, j
2/14/2007	--	168.01	15.44	0.04	152.60	--	--	--	--	--	--	--	--	--	b, j
5/22/2007	--	168.01	17.78	SHEEN	150.23	--	--	--	--	--	--	--	--	--	j, l

SYMBOLS AND ABBREVIATIONS:

-- = Not analyzed/applicable/measured/available
< = Not detected at or above specified laboratory reporting limit
DO = Dissolved oxygen
DTW = Depth to water in ft bgs
ft bgs = Feet below ground surface
ft MSL = Feet above mean sea level
GRO = Gasoline range organics
GWE = Groundwater elevation measured in ft MSL
mg/L = Milligrams per liter
MTBE = Methyl tert-butyl ether
NP = Well not purged prior to sampling
P = Well purged prior to sampling
TOC = Top of casing measured in ft MSL
TPH-g = Total petroleum hydrocarbons as gasoline
µg/L = Micrograms per liter
SEQ/SEQM= Sequoia Analytical/Sequoia Analytical Morgan Hill (Laboratories)
SPH = Separate phase hydrocarbons

FOOTNOTES:

a = Casing elevations surveyed to the nearest 0.01 ft MSL.
b = GWE adjusted assuming a specific gravity of 0.75 for free product (FP).
c = Blind duplicate.
d = A copy of the documentation for this data is included in Appendix C of Alisto report 10-024-10-001.
e = Well inaccessible.
f = Travel blank.
g = EPA Methods 8020/8260 used.
h = Unable to sample.
i = A copy of the documentation for this data can be found in Blaine Tech Services report 010607-M-3. MTBE data for the January 13, 1993 and April 23, 1993 sampling events has been destroyed. No chromatograms could be located for MTBE data from wells MW-5, MW-6, and MW-7, sampled on October 21, 1993.
j = Well not sampled due to presence of SPH and nature of the product.
k = Could not purge and sample; waste drum full.
l = Value represents the depth to product. Unable to determine depth to water, product disabled the interface probe.
m = Discrete peak @ C6-7.
n = TPH-g, BTEX, and MTBE analyzed by EPA method 8260 B beginning on 1st quarter 2003 sampling event (1/29/03).
o = Groundwater samples are not collected during FP bailing event.
p = Well not included in the monthly FP bailing program.
q = Well not sampled in November 2003 due to the presence of a pile of gravel dumped over the well box.
r = This sample was analyzed beyond the EPA recommended holding time. The results may still be useful for their intended purpose.
s = MW-7 TOC elevation raised +0.47 ft during well repair on January 20, 2004.
t = Sheen in well.
u = Calib. verif. is within method limits but outside contract limits.
v = GRO result partly due to individual peak(s) in quantitation range.

NOTES:

Beginning in the fourth quarter 2003, the laboratory modified the reported analyte list. TPH-g was changed to GRO. The resulting data may be impacted by the potential of non-TPH-g analytes within the requested fuel range resulting in a higher concentration being reported.

Beginning in the second quarter 2004, the carbon range for GRO was changed from C6-C10 to C4-C12.

Values for DO and pH were obtained through field measurements.

Note: The data within this table collected prior to April 2006 was provided to Broadbent & Associates, Inc. by Atlantic Richfield Company and their previous consultants. Broadbent & Associates, Inc. has not verified the accuracy of this information.

Table 2. Summary of Fuel Additives Analytical Data

Station #11132, 3201 35th Ave, Oakland, CA

Well and Sample Date	Concentrations in (µg/L)								Comments
	Ethanol	TBA	MTBE	DIPE	ETBE	TAME	1,2-DCA	EDB	
MW-1									
5/19/2006	<6,000	<400	86	<10	<10	<10	<10	<10	
MW-2									
1/29/2003	<4000	<2000	820	<50	<50	<50	<50	<50	
5/22/2003	<10000	<2000	1,000	<50	<50	<50	--	--	
7/28/2003	<20000	<4000	1,700	<100	<100	<100	<100	<100	b
11/18/2003	<5,000	<1,000	500	<25	<25	<25	--	--	
02/23/2004	<25,000	<5,000	790	<120	<120	<120	<120	<120	
05/04/2004	<50,000	<10,000	780	<250	<250	<250	<250	<250	
08/04/2004	<50,000	<10,000	430	<250	<250	<250	<250	<250	
11/10/2004	<5,000	<1,000	310	<25	<25	<25	<25	<25	
02/15/2005	<20,000	<4,000	690	<100	<100	<100	<100	<100	
05/16/2005	<50,000	<10,000	560	<250	<250	<250	<250	<250	
08/17/2005	<20,000	<4,000	480	<100	<100	<100	<100	<100	
11/18/2005	<20,000	<4,000	340	<100	<100	<100	<100	<100	b
02/07/2006	<60,000	<4,000	440	<100	<100	<100	160	<100	
5/19/2006	<60,000	<4,000	430	<100	<100	<100	<100	<100	b
8/23/2006	<60,000	<4,000	480	<100	<100	<100	<100	<100	
11/15/2006	<60,000	<4,000	400	<100	<100	<100	<100	<100	
2/14/2007	<60,000	<4,000	810	<100	<100	<100	<100	<100	
5/22/2007	<150,000	<10,000	1,000	<250	<250	<250	<250	<250	
MW-3									
1/29/2003	<40	<20	0.76	<50	<50	<50	<50	<50	
02/23/2004	<100	<20	<0.50	<0.50	<0.50	<0.50	<0.50	<0.50	
02/15/2005	<100	<20	1.7	<0.50	<0.50	<0.50	<0.50	<0.50	
02/07/2006	<300	<20	<0.50	<0.50	<0.50	<0.50	<0.50	<0.50	
2/14/2007	<300	<20	3.8	<0.50	<0.50	<0.50	<0.50	<0.50	u
MW-4									
1/29/2003	<40	<20	66	<0.50	<0.50	<0.50	<0.50	<0.50	
02/23/2004	<100	<20	65	<0.50	<0.50	<0.50	<0.50	<0.50	
02/15/2005	<100	<20	62	<0.50	<0.50	<0.50	<0.50	<0.50	

Table 2. Summary of Fuel Additives Analytical Data

Station #11132, 3201 35th Ave, Oakland, CA

Well and Sample Date	Concentrations in (µg/L)								Comments
	Ethanol	TBA	MTBE	DIPE	ETBE	TAME	1,2-DCA	EDB	
MW-4 Cont.									
02/07/2006	<300	<20	29	<0.50	<0.50	<0.50	<0.50	<0.50	
2/14/2007	<300	<20	61	<0.50	<0.50	<0.50	<0.50	<0.50	
MW-5									
1/29/2003	<400	<200	82	<5.0	<5.0	<5.0	<5.0	<5.0	
5/22/2003	<10000	<2000	<50	<50	<50	<50	--	--	
7/28/2003	<2000	<400	120	<10	<10	<10	<10	<10	
11/18/2003	--	--	--	--	--	--	--	--	Well inaccessible
02/23/2004	<5,000	<1,000	100	<25	<25	<25	38	<25	
05/04/2004	<5,000	<1,000	42	<25	<25	<25	<25	<25	
08/04/2004	<5,000	<1,000	390	<25	<25	<25	<25	<25	
11/10/2004	<1,000	<200	530	<5.0	<5.0	5.5	<5.0	<5.0	
02/15/2005	<1,000	<200	260	<5.0	<5.0	<5.0	<5.0	<5.0	
05/16/2005	<1,000	<200	370	<5.0	<5.0	<5.0	<5.0	<5.0	
08/17/2005	<1,000	<200	51	<5.0	<5.0	<5.0	<5.0	<5.0	
11/18/2005	<1,000	<200	340	<5.0	<5.0	<5.0	<5.0	<5.0	b
02/07/2006	<3,000	<200	200	<5.0	<5.0	<5.0	<5.0	<5.0	
5/19/2006	<3,000	<200	44	<5.0	<5.0	<5.0	<5.0	<5.0	b
8/23/2006	<5,000	<200	230	<5.0	<5.0	<5.0	<5.0	<5.0	
11/15/2006	<1,500	<100	490	<2.5	<2.5	4.2	<2.5	<2.5	
2/14/2007	<1,500	<100	420	<2.5	<2.5	3.6	<2.5	<2.5	
5/22/2007	<1,500	<100	26	<2.5	<2.5	<2.5	<2.5	<2.5	
MW-6									
05/16/2005	<100	<20	<0.50	<0.50	<0.50	<0.50	<0.50	<0.50	
02/07/2006	<300	<20	<0.50	<0.50	<0.50	<0.50	<0.50	<0.50	
2/14/2007	<300	<20	<0.50	<0.50	<0.50	<0.50	<0.50	<0.50	
MW-7									
02/07/2006	<3,000	<200	270	<5.0	<5.0	<5.0	<5.0	<5.0	
2/14/2007	<3,000	<200	740	<5.0	<5.0	9.6	<5.0	<5.0	
MW-8									

Table 2. Summary of Fuel Additives Analytical Data

Station #11132, 3201 35th Ave, Oakland, CA

Well and Sample Date	Concentrations in (µg/L)								Comments
	Ethanol	TBA	MTBE	DIPE	ETBE	TAME	1,2-DCA	EDB	
MW-8 Cont.									
1/29/2003	<4000	<2000	<500	<50	<50	<50	<50	<50	
5/22/2003	<5000	<1000	--	<25	<25	<25	--	--	
7/28/2003	<20000	<4000	2,100	<100	<100	<100	<100	<100	
11/18/2003	<2,000	<400	1,700	<10	<10	20	--	--	a,b
02/23/2004	<10,000	<2,000	110	<50	<50	<50	<50	<50	
05/04/2004	<5,000	<1,000	2,000	<25	<25	33	<25	<25	
11/10/2004	<5,000	<1,000	74	<25	<25	<25	<25	<25	
02/15/2005	<10,000	<2,000	<50	<50	<50	<50	<50	<50	
05/16/2005	<10,000	<2,000	<50	<50	<50	<50	<50	<50	
08/17/2005	<10,000	<2,000	<50	<50	<50	<50	<50	<50	
11/18/2005	<10,000	<2,000	140	<50	<50	<50	<50	<50	b
02/07/2006	<3,000	<200	7.5	<5.0	<5.0	<5.0	<5.0	<5.0	
5/19/2006	<15,000	<1,000	<25	<25	<25	<25	<25	<25	b
8/23/2006	<15,000	<1,000	82	<25	<25	<25	<25	<25	
11/15/2006	<15,000	<1,000	110	<25	<25	<25	<25	<25	
2/14/2007	<15,000	<1,000	82	<25	<25	<25	<25	<25	
5/22/2007	<6,000	<400	11	<10	<10	<10	<10	<10	
MW-9									
5/22/2003	<10000	<2000	<50	<50	<50	<50	--	--	
7/28/2003	<100000	<20000	<500	<500	<500	<500	<500	<500	
11/18/2003	<2,000	<400	45	<10	<10	<10	--	--	a,b
02/23/2004	<50,000	<10,000	<250	<250	<250	<250	<250	<250	
05/04/2004	<5,000	<1,000	<25	<25	<25	<25	<25	<25	
11/10/2004	<10,000	<2,000	<50	<50	<50	<50	<50	<50	
02/15/2005	<10,000	<2,000	<50	<50	<50	<50	<50	<50	
05/16/2005	<2,000	<400	<10	<10	<10	<10	<10	<10	
08/17/2005	<2,500	<500	<12	<12	<12	<12	<12	<12	
11/18/2005	<1,000	<200	19	<5.0	<5.0	<5.0	<5.0	<5.0	b
02/07/2006	<3,000	<200	<5.0	<5.0	<5.0	5.4	<5.0	<5.0	
8/23/2006	<30,000	<2,000	<50	<50	<50	<50	<50	<50	
11/15/2006	<15,000	<1,000	26	<25	<25	<25	<25	<25	

Table 2. Summary of Fuel Additives Analytical Data

Station #11132, 3201 35th Ave, Oakland, CA

Well and Sample Date	Concentrations in (µg/L)								Comments
	Ethanol	TBA	MTBE	DIPE	ETBE	TAME	1,2-DCA	EDB	
MW-9 Cont.									
2/14/2007	<15,000	<1,000	<25	<25	<25	<25	<25	<25	
5/22/2007	<15,000	<1,000	<25	<25	<25	<25	<25	<25	
MW-10									
5/22/2003	<10,000	<2,000	300	<50	<50	<50	--	--	
11/18/2003	<10,000	<2,000	<50	<50	<50	<50	--	--	b
02/23/2004	<20,000	<4,000	180	<100	<100	<100	<100	<100	
05/04/2004	<5,000	<1,000	<25	<25	<25	<25	<25	<25	
11/10/2004	<5,000	<1,000	230	<25	<25	<25	<25	<25	b
02/15/2005	<10,000	<2,000	77	<50	<50	<50	<50	<50	
05/16/2005	<10,000	<2,000	<50	<50	<50	<50	<50	<50	
08/17/2005	<10,000	<2,000	<50	<50	<50	<50	<50	<50	
11/18/2005	<2,500	<500	16	<12	<12	<12	<12	<12	b
02/07/2006	<15,000	<1,000	73	<25	<25	<25	<25	<25	
5/19/2006	<15,000	<1,000	<25	<25	<25	<25	<25	<25	b
8/23/2006	<6,000	<400	<10	<10	<10	<10	<10	<10	
11/15/2006	<6,000	<400	54	<10	<10	<10	<10	<10	
2/14/2007	<6,000	<400	120	<10	<10	<10	<10	<25	
5/22/2007	<6,000	<400	15	<10	<10	<10	<10	<10	
RW-1									
11/18/2003	<10,000	11,000	6,100	<50	<50	160	--	--	a,b

SYMBOLS AND ABBREVIATIONS:

-- = Not analyzed/applicable/measured/available

< = Not detected at or above specified laboratory reporting limit

1,2-DCA = 1,2-Dichloroethane

DIPE = Di-isopropyl ether

EDB = 1,2-Dibromoethane

ETBE = Ethyl tert-butyl ether

MTBE = Methyl tert-butyl ether

TAME = tert-Amyl methyl ether

TBA = tert-Butyl alcohol

µg/L = Micrograms per Liter

FOOTNOTES:

a = The result for TBA was reported with a possible high bias due to the continuing calibration verification falling outside acceptance criteria

b = The continuing calibration verification for ethanol was outside of client contractual acceptance limits. However, it was within method acceptance limits. The data should still be useful for its intended purpose.

NOTES:

All volatile organic compounds analyzed using EPA Method 8260B.

Note: The data within this table collected prior to April 2006 was provided to Broadbent & Associates, Inc. by Atlantic Richfield Company and their previous consultants. Broadbent & Associates, Inc. has not verified the accuracy of this information.

Table 3. Historical Ground-Water Flow Direction and Gradient
Station #11132, 3201 35th Ave, Oakland, CA

Date Sampled	Approximate Flow Direction	Approximate Hydraulic Gradient
5/19/2006	South	0.003 to 0.005
8/23/2006	Southwest	0.01
11/15/2006	South	0.004
2/14/2007	Southeast	0.01
5/22/2007	South	0.005

Note: The data within this table collected prior to April 2006 was provided to Broadbent & Associates, Inc. by Atlantic Richfield Company and their previous consultants. Broadbent & Associates, Inc. has not verified the accuracy of this information.

Table 4
Free Product Removal
Former BP Service Station #11132
3201 35th Avenue, Oakland, CA

WELL ID	DATE OF MONITORING	PRODUCT THICKNESS (feet)	PRODUCT REMOVED (gallons)	CUMULATIVE PRODUCT REMOVED (gallons)
MW-1	7/9/1990	0.22	2.000	2.000
MW-1	12/21/1990	0.58	2.000	4.000
MW-1	3/7/1991	0.00	--	4.000
MW-1	6/27/1991	0.18	2.000	6.000
MW-1	9/27/1991	0.27	2.000	8.000
MW-1	12/18/1991	0.28	2.000	10.000
MW-1	4/1/1991	0.15	2.000	12.000
MW-1	7/3/1992	0.27	2.000	14.000
MW-1	10/5/1992	0.24	2.000	16.000
MW-1	1/13/1993	0.24	2.000	18.000
MW-1	4/23/1993	0.42	2.000	20.000
MW-1	7/12/1993	0.49	--	20.000
MW-1	10/21/1993	1.09	2.000	22.000
MW-1	1/21/1994	0.76	--	22.000
MW-1	4/20/1994	1.80	2.000	24.000
MW-1	8/1/1994	0.35	--	24.000
MW-1	1/26/1995	1.10	3.000	27.000
MW-1	6/8/95-6/28/95	1.25	0.700	27.700
MW-1	8/22/1995	0.85	0.150	27.850
MW-1	10/30/95-12/23/95	0.69	0.110	27.960
MW-1	1/25/96-2/16/95	1.40	1.080	29.040
MW-1	4/19/1996	1.22	0.750	29.790
MW-1	7/23/1996	0.89	0.000	29.790
MW-1	9/4/1996	--	0.350	30.140
MW-1	11/11/1996	0.89	0.980	31.120
MW-1	1/21/1997	0.90	0.200	31.320
MW-1	4/29/1997	0.85	0.250	31.570
MW-1	8/21/1997	--	0.150	31.720
MW-1	11/2/97-12/9/97	0.87	2.030	33.750
MW-1	2/3/1998	0.32	0.250	34.000
MW-1	2/4/1998	--	--	34.000
MW-1	5/28/1998	0.17	--	34.000
MW-1	12/30/1998	0.08	0.020	34.020
MW-1	2/2/1999	0.03	0.010	34.030
MW-1	5/10/1999	0.03	0.010	34.040
MW-1	8/24/1999	0.06	0.010	34.050
MW-1	11/3/1999	0.36	0.050	34.100
MW-1	3/1/2000	0.23	*	34.100
MW-1	4/21/2000	0.33	0.070	34.170
MW-1	7/31/2000	0.53	0.130	34.300
MW-1	11/20/2000	0.37	0.500	34.800
MW-1	2/18/2001	0.13	0.050	34.850
MW-1	2/26/2001	0.15	0.150	35.000
MW-1	6/7/2001	0.00	--	35.000
MW-1	9/5/2001	0.35	--	35.000
MW-1	11/30/2001	0.41	0.260	35.260
MW-1	12/6/2001	0.27	0.040	35.300
MW-1	2/20/2002	0.15	0.020	35.320
MW-1	6/20/2002	0.34	0.070	35.390
MW-1	9/11/2002	0.40	0.060	35.450
MW-1	11/12/2002	0.37	0.060	35.510
MW-1	1/29/2003	0.30	0.320	35.830

Table 4
Free Product Removal
Former BP Service Station #11132
3201 35th Avenue, Oakland, CA

WELL ID	DATE OF MONITORING	PRODUCT THICKNESS (feet)	PRODUCT REMOVED (gallons)	CUMULATIVE PRODUCT REMOVED (gallons)
MW-1	5/22/2003	0.20	0.140	35.970
MW-1	6/24/2003	0.35	0.070	36.040
MW-1	7/28/2003	0.35	0.080	36.050
MW-1	8/12/2003	0.23	0.040	36.090
MW-1	9/12/2003	0.24	0.040	36.130
MW-1	10/3/2003	0.23	0.040	36.170
MW-1	11/18/2003	0.25	0.040	36.210
MW-1	12/31/2003	0.15	0.020	36.230
MW-1	2/2/2004	0.15	0.020	36.250
MW-1	2/23/2004	0.09	0.030	36.280
MW-1	3/18/2004	0.09	0.010	36.290
MW-1	4/13/2004	0.24	0.040	36.330
MW-1	5/4/2004	0.16	0.030	36.360
MW-1	6/2/2004	0.08	0.010	36.370
MW-1	7/2/2004	0.28	0.040	36.410
MW-1	8/4/2004	0.10	0.080	36.490
MW-1	9/22/2004	0.20	0.030	36.520
MW-1	10/26/2004	0.12	0.020	36.540
MW-1	11/10/2004	0.14	0.020	36.560
MW-1	12/27/2004	0.08	0.010	36.570
MW-1	1/13/2005	0.03	0.005	36.575
MW-1	2/15/2005	0.04	0.006	36.581
MW-1	3/7/2005	0.01	0.007	36.588
MW-1	4/29/2005	0.01	0.002	36.589
MW-1	5/16/2005	0.02	0.003	36.592
MW-1	6/21/2005	0.01	0.002	36.594
MW-1	7/7/2005	0.18	0.029	36.623
MW-1	8/17/2005	0.08	0.013	36.636
MW-1	9/6/2005	0.02	0.003	36.639
MW-1	10/4/2005	0.12	0.020	36.659
MW-1	9/6/2005	0.06	0.010	36.669
MW-1	12/30/2005	0.03	0.005	36.674
MW-1	1/24/2006	0.00	0.000	36.674
MW-1	2/7/2006	0.01	0.002	36.676
MW-1	3/30/2006	0.00	0.000	36.676
MW-1	4/21/2006	0.00	0.000	36.676
MW-1	5/19/2006	<0.01 (SHEEN)	0.000	36.676
MW-1	6/22/2006	0.04	0.006	36.682
MW-1	7/31/2006	0.04	0.006	36.688
MW-1	8/23/2006	0.14	0.022	36.710
MW-1	9/28/2006	0.35	0.056	36.766
MW-1	11/15/2006	0.18	--	36.766
MW-1	2/14/2007	0.17	*	36.766
MW-1	3/14/2007	0.04	****	36.766
MW-1	4/10/2007	0.15	****	36.766
MW-1	5/22/2007	0.01	****	36.766
MW-1	6/26/2007	0.05	****	36.766
MW-8	11/02/93-12/09/98	0.12	1.620	1.620
MW-8	9/5/2001	0.04	--	1.660
MW-8	8/12/2003	<0.01 (SHEEN)	--	1.660
MW-8	10/3/2003	<0.01 (SHEEN)	--	1.660

Table 4
Free Product Removal
Former BP Service Station #11132
3201 35th Avenue, Oakland, CA

WELL ID	DATE OF MONITORING	PRODUCT THICKNESS (feet)	PRODUCT REMOVED (gallons)	CUMULATIVE PRODUCT REMOVED (gallons)
MW-8	11/18/2003	<0.01 (SHEEN)	--	1.660
MW-8	12/31/2003	<0.01 (SHEEN)	--	1.660
MW-8	2/2/2004	<0.01 (SHEEN)	--	1.660
MW-8	2/23/2004	<0.01 (SHEEN)	--	1.660
MW-8	3/18/2004	<0.01 (SHEEN)	--	1.660
MW-8	4/13/2004	<0.01 (SHEEN)	--	1.660
MW-8	5/4/2004	<0.01 (SHEEN)	--	1.660
MW-8	6/2/2004	<0.01 (SHEEN)	--	1.660
MW-8	7/2/2004	--	--	1.660
MW-8	8/4/2004	0.05	0.110	1.770
MW-8	9/22/2004	--	--	1.770
MW-8	10/26/2004	--	--	1.770
MW-8	11/10/2004	--	--	1.770
MW-8	12/26/2004	--	--	1.770
MW-8	1/13/2005	--	--	1.770
MW-8	2/15/2005	--	--	1.770
MW-8	3/7/2005	--	--	1.770
MW-8	4/29/2005	--	--	1.770
MW-8	5/16/2005	--	--	1.770
MW-8	6/21/2005	--	--	1.770
MW-8	7/7/2005	--	--	1.770
MW-8	8/17/2005	--	--	1.770
MW-8	9/6/2005	--	--	1.770
MW-8	1/24/2006	--	--	1.770
MW-8	2/7/2006	--	--	1.770
MW-8	3/30/2006	--	--	1.770
MW-8	4/21/2006	--	--	1.770
MW-8	5/19/2006	<0.01 (Sheen)	--	1.770
MW-8	6/22/2006	--	--	1.770
MW-8	7/31/2006	--	--	1.770
MW-8	8/23/2006	--	--	1.770
MW-8	9/28/2006	--	--	1.770
MW-8	11/15/2006	<0.01 (Sheen)	--	1.770
MW-8	2/14/2007	<0.01 (Sheen)	--	1.770
MW-8	5/22/2007	<0.01 (Sheen)	--	1.770
MW-8	6/26/2007	--	--	1.770
MW-9	11/2/93-4/29/97	0.10	<0.1	0.880
MW-9	11/5/1997	0.01	<0.1	0.880
MW-9	1/29/2003	0.10	0.190	1.070
MW-9	6/24/2003	NM	NM	1.070
MW-9	7/28/2003	<0.01 (SHEEN)	--	1.070
MW-9	8/12/2003	<0.01 (SHEEN)	--	1.070
MW-9	9/12/2003	<0.01 (SHEEN)	--	1.070
MW-9	10/3/2003	0.01	0.002	1.072
MW-9	11/18/2003	<0.01 (SHEEN)	--	1.072
MW-9	12/31/2003	<0.01 (SHEEN)	--	1.072
MW-9	2/2/2004	<0.01 (SHEEN)	--	1.072
MW-9	2/23/2004	<0.01 (SHEEN)	--	1.072
MW-9	3/18/2004	<0.01 (SHEEN)	--	1.072
MW-9	4/13/2004	<0.01 (SHEEN)	--	1.072
MW-9	5/4/2004	<0.01 (SHEEN)	--	1.072

Table 4
Free Product Removal
Former BP Service Station #11132
3201 35th Avenue, Oakland, CA

WELL ID	DATE OF MONITORING	PRODUCT THICKNESS (feet)	PRODUCT REMOVED (gallons)	CUMULATIVE PRODUCT REMOVED (gallons)
MW-9	6/2/2004	<0.01 (SHEEN)	--	1.072
MW-9	7/2/2004	--	--	1.072
MW-9	8/4/2004	0.03	0.053	1.125
MW-9	9/22/2004	--	--	1.125
MW-9	10/26/2004	--	--	1.125
MW-9	11/10/2004	--	--	1.125
MW-9	12/27/2004	--	--	1.125
MW-9	1/13/2005	--	--	1.125
MW-9	2/15/2005	--	--	1.125
MW-9	3/7/2005	--	--	1.125
MW-9	4/29/2005	--	--	1.125
MW-9	5/16/2005	--	--	1.125
MW-9	6/21/2005	--	--	1.125
MW-9	7/7/2005	--	--	1.125
MW-9	8/17/2005	--	--	1.125
MW-9	9/6/2005	--	--	1.125
MW-9	1/24/2006	--	--	1.125
MW-9	2/7/2006	SHEEN	--	1.125
MW-9	3/30/2006	--	--	1.125
MW-9	4/21/2006	--	--	1.125
MW-9	5/19/2006	NM	--	1.125
MW-9	6/22/2006	--	--	1.125
MW-9	7/31/2006	--	--	1.120
MW-9	8/23/2006	--	--	1.120
MW-9	9/28/2006	--	--	1.120
MW-9	11/15/2006	<0.01 (Sheen)	--	1.120
MW-9	2/14/2007	<0.01 (Sheen)	--	1.120
MW-9	5/22/2007	<0.01 (Sheen)	--	1.120
MW-9	6/26/2007	--	--	1.120
MW-10	9/7/93-7/23/96	--	10.520	10.520
MW-10	9/4/1996	0.76	0.100	10.620
MW-10	11/11/1996	--	0.200	10.820
MW-10	1/21/1997	--	<0.03	10.850
MW-10	4/29/1997	--	0.040	10.890
MW-10	4/29/1997	--	0.040	10.930
MW-10	12/2/1997	0.03	<0.1	10.930
MW-10	2/3/1998	--	<0.1	10.930
MW-10	9/5/2001	0.01	--	10.930
MW-10	11/12/2002	0.07	0.010	10.940
MW-10	1/29/2003	0.03	0.030	10.970
MW-10	6/24/2003	0.04	0.010	10.980
MW-10	7/28/2003	0.04	0.020	11.000
MW-10	8/12/2003	<0.01 (SHEEN)	--	11.000
MW-10	10/3/2003	<0.01 (SHEEN)	--	11.000
MW-10	11/18/2003	<0.01 (SHEEN)	--	11.000
MW-10	12/31/2003	<0.01 (SHEEN)	--	11.000
MW-10	2/2/2004	<0.01 (SHEEN)	--	11.000
MW-10	2/23/2004	<0.01 (SHEEN)	--	11.000
MW-10	3/18/2004	<0.01 (SHEEN)	--	11.000
MW-10	4/13/2004	<0.01 (SHEEN)	--	11.000
MW-10	5/4/2004	<0.01 (SHEEN)	--	11.000

Table 4
Free Product Removal
Former BP Service Station #11132
3201 35th Avenue, Oakland, CA

WELL ID	DATE OF MONITORING	PRODUCT THICKNESS (feet)	PRODUCT REMOVED (gallons)	CUMULATIVE PRODUCT REMOVED (gallons)
MW-10	6/2/2004	<0.01 (SHEEN)	--	11.000
MW-10	7/2/2004	<0.01 (SHEEN)	--	11.000
MW-10	8/4/2004	0.08	0.110	11.110
MW-10	9/22/2004	--	--	11.110
MW-10	10/26/2004	--	--	11.110
MW-10	11/10/2004	--	--	11.110
MW-10	12/27/2004	--	--	11.110
MW-10	1/13/2005	<0.01 (SHEEN)	--	11.110
MW-10	2/15/2005	--	--	11.110
MW-10	3/7/2005	--	--	11.110
MW-10	4/29/2005	--	--	11.110
MW-10	5/16/2005	--	--	11.110
MW-10	6/21/2005	--	--	11.110
MW-10	7/7/2005	--	--	11.110
MW-10	8/17/2005	--	--	11.110
MW-10	9/6/2005	--	--	11.110
MW-10	1/24/2006	--	--	11.110
MW-10	2/7/2006	SHEEN	--	11.110
MW-10	3/30/2006	--	--	11.110
MW-10	4/21/2006	--	--	11.110
MW-10	5/19/2006	<0.01 (SHEEN)	--	11.110
MW-10	6/22/2006	--	--	11.110
MW-10	7/31/2006	--	--	11.110
MW-10	8/23/2006	--	--	11.110
MW-10	9/28/2006	--	--	11.110
MW-10	11/15/2006	<0.01 (Sheen)	--	11.110
MW-10	2/14/2007	<0.01 (Sheen)	--	11.110
MW-10	5/22/2007	<0.01 (Sheen)	--	11.110
MW-10	6/26/2007	<0.01 (Sheen)	--	11.110
RW-1	9/5/2001	0.02	--	0.000
RW-1	6/20/2002	**	--	0.000
RW-1	9/11/2002	0.03	0.040	0.040
RW-1	11/12/2002	0.02	0.030	0.070
RW-1	1/29/2003	0.04	0.070	0.140
RW-1	6/24/2003	0.07	0.040	0.180
RW-1	7/28/2003	0.04	0.020	0.200
RW-1	8/12/2003	<0.01 (SHEEN)	--	0.200
RW-1	9/12/2003	0.07	0.100	0.300
RW-1	10/3/2003	0.03	0.040	0.340
RW-1	11/18/2003	<0.01 (SHEEN)	--	0.340
RW-1	12/31/2003	<0.01 (SHEEN)	--	0.340
RW-1	2/23/2004	0.01	0.005	0.345
RW-1	3/18/2004	0.09	0.120	0.465
RW-1	4/13/2004	0.02	0.030	0.495
RW-1	5/4/2004	0.02	0.030	0.525
RW-1	6/2/2004	0.05	0.020	0.545
RW-1	7/2/2004	0.11	0.162	0.707
RW-1	8/4/2004	0.05	0.159	0.865
RW-1	9/22/2004	0.06	0.088	0.953
RW-1	10/26/2004	0.01	0.010	0.963
RW-1	11/10/2004	0.02	0.030	0.993

Table 4
Free Product Removal
Former BP Service Station #11132
3201 35th Avenue, Oakland, CA

WELL ID	DATE OF MONITORING	PRODUCT THICKNESS (feet)	PRODUCT REMOVED (gallons)	CUMULATIVE PRODUCT REMOVED (gallons)
RW-1	12/27/2004	0.03	0.010	1.003
RW-1	1/13/2005	0.01	0.004	1.007
RW-1	2/15/2005	0.03	0.044	1.051
RW-1	3/7/2005	0.02	0.029	1.080
RW-1	4/29/2005	0.03	0.044	1.124
RW-1	5/16/2005	0.02	0.029	1.154
RW-1	6/21/2005	0.03	0.013	1.167
RW-1	7/7/2005	0.06	0.092	1.259
RW-1	8/17/2005	0.03	0.044	1.304
RW-1	9/6/2005	0.03	0.044	1.348
RW-1	10/4/2005	0.07	0.100	1.448
RW-1	11/18/2005	0.07	0.010	1.458
RW-1	12/30/2005	0.04	0.006	1.464
RW-1	1/24/2006	0.01	0.015	1.479
RW-1	2/7/2006	0.01	0.015	1.494
RW-1	3/30/2006	0.02	0.030	1.524
RW-1	4/21/2006	0.00	0.000	1.524
RW-1	5/19/2006	0.04	0.058	1.582
RW-1	6/22/2006	0.03	0.044	1.626
RW-1	7/31/2006	0.12	0.176	1.802
RW-1	8/23/2006	0.07	0.103	1.905
RW-1	9/28/2006	0.07	0.103	2.008
RW-1	11/15/2006	0.07	--	2.008
RW-1	2/14/2007	0.04	*	2.008
RW-1	3/14/2007	0.05	****	2.008
RW-1	4/10/2007	0.10	****	2.008
RW-1	5/22/2007	**	****	2.008
RW-1	6/26/2007	0.05	****	2.008

Free Product Removed this Quarter = 0.000

Total Free Product = 52.774

NM = Unable to gauge free product thickness or remove product because the well was inaccessible.

* No hazardous waste drum on-site or drum was full, therefore no product was removed.

** Indeterminate thickness of product. The nature of product is unknown, very viscous.

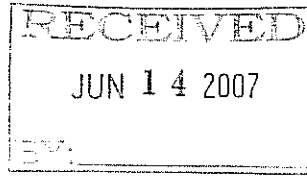
*** Data prior to 1998 is incomplete, and amounts removed are estimates based on quarter reports from the previous consultants.

**** Absorbent socks used to collect product. Unknown amount of product recovered.

The data within this table collected prior to June 2006 was provided to BAI by RM and their previous consultants. BAI has not verified the accuracy of this information.

APPENDIX A

STRATUS GROUND-WATER SAMPLING DATA PACKAGE
(INCLUDES FIELD DATA SHEETS AND LABORATORY ANALYTICAL REPORT WITH
CHAIN-OF-CUSTODY DOCUMENTATION)



3330 Cameron Park Drive, Ste 550
Cameron Park, California 95682
(530) 676-6004 ~ Fax: (530) 676-6005

June 12, 2007

Mr. Rob Miller
Broadbent & Associates, Inc.
2000 Kirman Avenue
Reno, NV 89502

Re: Groundwater Sampling Data Package, BP Service Station No. 11132, located at 3201 35th Avenue, Oakland, California (Quarterly Monitoring performed on May 22, 2007)

General Information

Data Submittal Prepared / Reviewed by: Sandy Hayes / Jay Johnson

Phone Number: (530) 676-6000

On-Site Supplier Representatives: Greg Wilkins and David DeMello

Date: May 22, 2007

Arrival: 04:24

Departure: 08:40

Weather Conditions: Clear

Unusual Field Conditions: None

Scope of Work Performed: Quarterly monitoring and sampling

Variations from Work Scope: Sheen was noted on Wells MW-8, MW-9 and MW-10. Product was noted in Wells MW-1 and RW-1.

This submittal presents the tabulation of data collected in association with routine groundwater monitoring. The attachments include bill of lading, field data sheets, chain of custody documentation, and certified analytical results. The information is being provided to BP-ARCO's Scoping Supplier for use in preparing a report for regulatory submittal. This submittal is limited to presentation of collected data and does not include data interpretation or conclusions or recommendations. Any questions concerning this submittal should be addressed to the Preparer/Reviewer identified above.

Sincerely,

STRATUS ENVIRONMENTAL, INC.

Jay R. Johnson, P.G.
Project Manager



Attachments:

- Bill of Lading
- Field Data Sheets
- Chain of Custody Documentation
- Certified Analytical Results

CC: Mr. Paul Supple, BP/ARCO

BP GEM OIL COMPANY

TYPE **A** BILL OF LADING

SOURCE RECORD BILL OF LADING FOR NON-HAZARDOUS PURGEWATER RECOVERED FROM GROUNDWATER WELLS AT BP GEM OIL COMPANY FACILITIES IN THE STATE OF CALIFORNIA. THE NON-HAZARDOUS PURGEWATER WHICH HAS BEEN RECOVERED FROM GROUNDWATER WELLS IS COLLECTED BY THE CONTRACTOR, MADE UP INTO LOADS OF APPROPRIATE SIZE AND HAULED BY BELSHIRE ENVIRONMENTAL TO SEAPORT ENVIRONMENTAL IN REDWOOD CITY, CALIFORNIA.

The contractors performing this work are Stratus Environmental, Inc. [Stratus, 3330 Cameron Park Drive, Suite 550, Cameron Park, CA 95682, (530) 676-6004], and Dulous Environmental, Inc. [Dulous, PO Box 2559, Orangevale, CA 95662, (916) 990-0333]. Stratus is authorized by BP GEM OIL COMPANY to recover, collect, and apportion into loads the non-hazardous well purgewater that is drawn from wells at BP GEM Oil Company facilities and deliver that purgewater to BP GEM Oil Company facility 5786 located in West Sacramento, California. Dulous also performs these services under subcontract to Stratus. Transport routing of the non-hazardous well purgewater may be direct from one BP GEM facility to the designated destination point; from one BP GEM facility to the designated destination point via another BP GEM facility; from a BP GEM facility to the designated destination point via the contractor's facility, or any combination thereof. The non-hazardous well purgewater is and remains the property of BP GEM Oil Company.

This Source Record BILL OF LADING was initiated to cover the recovery of non-hazardous well purgewater from wells at the BP GEM Oil Company facility described below:

ARCO 11132

Station #

3201 35th Ave Oakland, CA.

Station Address

Total Gallons Collected From Groundwater Monitoring Wells:

40

Added Equipment

Any Other

Rinse Water _____

Adjustments _____

TOTAL GALS.

loaded onto

RECOVERED 40

Stratus vehicle # _____

Stratus Project #

time

date

E11132

0830

05/22/07

Signature

RECEIVED AT

time

date

5786

1030

05/22/07

Unloaded by

Signature

STRATUS ENVIRONMENTAL INC.

Site Address: 3201 35th Ave.
 City Oakland CA
 Sampled By C. Wilkins
D. Perello

Site Number: ARCO 11132
 Project No. E11132
 Project PM J. Johnson
 Date Sampled 05-22-07

ORIGINAL

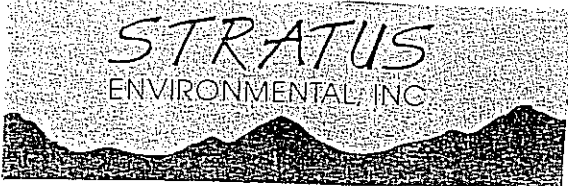
Site Contact Phone No.

Water Level Data				Purge Volume Calculations					Well Purge Method				Sample Record			Field Data	
Well ID	Time	Depth to water feet	Top of Screen feet	Total Depth of Well feet	Casing Water Column (A)	Well Diameter (Inches)	Multiplier Value (B)	Three Casing Volumes (gallons)	Actual Water Purged (gallons)	No Purge	Bailer	Pump	Other	DTW At Sample Time	Sample I.D.	Sample Time	Dissolved Oxygen (mg/L)
MW-1	0740	19.50		41.44	19.49	DTP	Not Sampled			X					MW-1		
MW-2	0528	18.20		31.43	13.23	2	.5	6.62	6.5		X			22.55	MW-2	0712	.08
MW-5	0518	15.42		32.00	16.58	2	.5	8.29	8		X			15.58	MW-5	0546	1.41
MW-8	0552	15.92		38.69	22.77	2	.5	11.39	11		X			16.21	MW-8	0637	1.05
MW-9	0549	16.14		28.73	12.59	2	.5	6.30	6		X			17.60	MW-9	0718	.81
MW-10	0555	17.17		34.03	16.86	2	.5	8.43	8.50		X			19.40	MW-10	0636	.06
RW-1	0536	17.78	unable to measure			depth to product		2 mix		X	X	Not Sampled			RW-1		
TB	11132	0522	007												TB	0510	
MW-3	0523	16.80		34.25													
MW-4	0510	20.16		39.71													
MW-6	0807	15.11		34.33													
MW-7	0600	18.4		34.61													

Daves Do Area
1.41

(A) Casing water Column
Depth wtr. Depth to Bottom

Multiplier Values
2"=0.5 4"=2.0 6"=4.4



Site Address 3201 35th Ave
 City Oakland CA
 Site Sampled by G. Wilkins
D. DeMello

Site Number ARCO 11132
 Project No. E11132
 Project PM J. Johnson
 Date Sampled 05-22-07

ORIGINAL

Well ID <u>MW-1</u>					Well ID <u>MW-2</u> <u>0712</u>				
purge start time <u>Not Sampled</u>					purge start time <u>Bailer</u> <u>Odor</u>				
	Temp C	pH	cond	gallons		Temp C	pH	cond	gallons
time					time	<u>19.7</u>	<u>7.00</u>	<u>657</u>	<u>0</u>
time					time	<u>19.9</u>	<u>6.91</u>	<u>660</u>	<u>3.5</u>
time					time	<u>20.0</u>	<u>6.90</u>	<u>667</u>	<u>6.5</u>
time					time				
purge stop time <u>Bailed Product</u>					purge stop time				
Well ID <u>MW-5</u> <u>0546</u>					Well ID <u>MW-8</u> <u>0637</u>				
purge start time <u>Bailer</u> <u>Odor</u>					purge start time <u>Bailer</u> <u>Odor</u>				
	Temp C	pH	cond	gallons		Temp C	pH	cond	gallons
time	<u>20.3</u>	<u>7.02</u>	<u>1596</u>	<u>0</u>	time	<u>19.1</u>	<u>7.01</u>	<u>1208</u>	<u>0</u>
time	<u>20.4</u>	<u>7.00</u>	<u>1587</u>	<u>4</u>	time	<u>19.5</u>	<u>7.00</u>	<u>1236</u>	<u>5.5</u>
time	<u>19.5</u>	<u>7.03</u>	<u>1605</u>	<u>8</u>	time	<u>19.5</u>	<u>6.99</u>	<u>1276</u>	<u>11</u>
time					time				
purge stop time					purge stop time <u>Sheen</u>				
Well ID <u>MW-9</u> <u>0718</u>					Well ID <u>MW-10</u> <u>0636</u>				
purge start time <u>Bailer</u> <u>Odor</u>					purge start time <u>Bailer</u> <u>Odor</u>				
	Temp C	pH	cond	gallons		Temp C	pH	cond	gallons
time	<u>20.1</u>	<u>7.16</u>	<u>1011</u>	<u>0</u>	time	<u>18.3</u>	<u>7.17</u>	<u>578</u>	<u>0</u>
time	<u>20.5</u>	<u>7.18</u>	<u>1022</u>	<u>3</u>	time	<u>18.4</u>	<u>7.03</u>	<u>581</u>	<u>4</u>
time	<u>20.3</u>	<u>7.08</u>	<u>1012</u>	<u>6</u>	time	<u>18.1</u>	<u>7.10</u>	<u>572</u>	<u>8.5</u>
time					time				
purge stop time <u>Sheen</u>					purge stop time <u>Sheen</u>				
Well ID <u>RW-1</u>					Well ID				
purge start time <u>Not Sampled</u>					purge start time				
	Temp C	pH	cond	gallons		Temp C	pH	cond	gallons
time					time				
time					time				
time					time				
time					time				
purge stop time <u>Bailed Product</u>					purge stop time				

17/314-07
CHILL

11132 Avia Outfall

 ORIGINAL

0950 onsite check wells

	DTP	DYW
MW-1	18.69	18.73
RW-1	17.35	17.40

Remove socks from wells used ones in drum

Put New ones in

1045 offsite

4-10-07 1132 Amlo Dated
PHILL

(20)

ORIGINAL

0930 onsite checks wells

	DTP	DTW	
MW-1	19.20	19.35	.15
RW-1	17.60	17.70	.10

Black sludge in color

Install New Absorb Socks - Wait Few minutes
then Remove install New one

1030 onsite

Arco 11132 Oakland

ORIGINAL

5-22-07

0600 onsite QM is being done

	DTP	DTW	
MW-1	19.49	19.50	
MW-8	+	15.92	show
MW-9	-	16.14	show
MW-10	-	17.17	show
RW-1	-	17.78	

4 GALS Purged Product/water Mix

MW-1 Black TAR cleaning up

RW-1 still some Black

Install socks (new) Again For

Last Time see what happens

0700 offsite

8 June, 2007

Jay Johnson
Stratus Environmental Inc. [Arco]
3330 Cameron Park Dr., Suite 550
Cameron Park, CA 95682

RE: BP Heritage #11132, Oakland, CA
Work Order: MQE0882

Enclosed are the results of analyses for samples received by the laboratory on 05/22/07 22:10. If you have any questions concerning this report, please feel free to contact me.

Sincerely,



Christina Woodcock For Lisa Race
Senior Project Manager

CA ELAP Certificate # 1210

The results in this laboratory report pertain only to the samples tested in the laboratory. The analyses contained in this report were performed in accordance with the BPGCLN Technical Specifications, applicable Federal, State, local regulations and certification requirements as well as the methodologies as described in laboratory SOPs reviewed by the BPGCLN. This entire report was reviewed and approved for release.

The Chain(s) of Custody, 4 pages, are included and are an integral part of this report.

The report shall not be reproduced except in full, without the written approval of the laboratory. The client also agrees not to alter any reports whether in the hard copy or electronic format and to use reasonable efforts to preserve the reports in the form and substance originally provided by TestAmerica.

The reported results were obtained in compliance with the 2003 NELAC standards unless otherwise noted.

Stratus Environmental Inc. [Arco]
3330 Cameron Park Dr., Suite 550
Cameron Park CA, 95682

Project: BP Heritage #11132, Oakland, CA
Project Number: G07TS-0030
Project Manager: Jay Johnson

MQE0882
Reported:
06/08/07 17:30

ANALYTICAL REPORT FOR SAMPLES

Sample ID	Laboratory ID	Matrix	Date Sampled	Date Received
MW-2	MQE0882-01	Water	05/22/07 07:12	05/22/07 22:10
MW-5	MQE0882-02	Water	05/22/07 05:46	05/22/07 22:10
MW-8	MQE0882-03	Water	05/22/07 06:37	05/22/07 22:10
MW-9	MQE0882-04	Water	05/22/07 07:18	05/22/07 22:10
MW-10	MQE0882-05	Water	05/22/07 06:36	05/22/07 22:10
TB-11132-05222007	MQE0882-06	Water	05/22/07 05:10	05/22/07 22:10

The carbon range for the TPH-GRO has been changed from C6-C10 to C4-C12. The carbon range for TPH-DRO has been changed from C10-C28 to C10-C36. EPA 8015B has been modified to better meet the requirements of California regulatory agencies.

These samples were received with no custody seals.

Stratus Environmental Inc. [Arco]
3330 Cameron Park Dr., Suite 550
Cameron Park CA, 95682

Project: BP Heritage #11132, Oakland, CA
Project Number: G07TS-0030
Project Manager: Jay Johnson

MQE0882
Reported:
06/08/07 17:30

Total Purgeable Hydrocarbons by GC/MS (CA LUFT)

TestAmerica - Morgan Hill, CA

Analyte	Result	Reporting Limit	Units	Dilution	Batch	Prepared	Analyzed	Method	Notes
MW-2 (MQE0882-01) Water Sampled: 05/22/07 07:12 Received: 05/22/07 22:10									
Gasoline Range Organics (C4-C12)	91000	25000	ug/l	500	7E31003	05/31/07	05/31/07	LUFT GCMS	
Surrogate: 1,2-Dichloroethane-d4		99 %	60-125		"	"	"	"	
Surrogate: Dibromofluoromethane		101 %	75-120		"	"	"	"	
Surrogate: Toluene-d8		100 %	80-120		"	"	"	"	
Surrogate: 4-Bromofluorobenzene		97 %	60-135		"	"	"	"	
MW-5 (MQE0882-02) Water Sampled: 05/22/07 05:46 Received: 05/22/07 22:10									
Gasoline Range Organics (C4-C12)	2800	250	ug/l	5	7F01004	06/01/07	06/01/07	LUFT GCMS	
Surrogate: 1,2-Dichloroethane-d4		92 %	60-125		"	"	"	"	
Surrogate: Dibromofluoromethane		101 %	75-120		"	"	"	"	
Surrogate: Toluene-d8		98 %	80-120		"	"	"	"	
Surrogate: 4-Bromofluorobenzene		94 %	60-135		"	"	"	"	
MW-8 (MQE0882-03) Water Sampled: 05/22/07 06:37 Received: 05/22/07 22:10									
Gasoline Range Organics (C4-C12)	17000	1000	ug/l	20	7E31003	05/31/07	05/31/07	LUFT GCMS	
Surrogate: 1,2-Dichloroethane-d4		103 %	60-125		"	"	"	"	
Surrogate: Dibromofluoromethane		96 %	75-120		"	"	"	"	
Surrogate: Toluene-d8		96 %	80-120		"	"	"	"	
Surrogate: 4-Bromofluorobenzene		95 %	60-135		"	"	"	"	
MW-9 (MQE0882-04) Water Sampled: 05/22/07 07:18 Received: 05/22/07 22:10									
Gasoline Range Organics (C4-C12)	16000	2500	ug/l	50	7E31003	05/31/07	05/31/07	LUFT GCMS	
Surrogate: 1,2-Dichloroethane-d4		95 %	60-125		"	"	"	"	
Surrogate: Dibromofluoromethane		98 %	75-120		"	"	"	"	
Surrogate: Toluene-d8		99 %	80-120		"	"	"	"	
Surrogate: 4-Bromofluorobenzene		92 %	60-135		"	"	"	"	

Stratus Environmental Inc. [Arco] 3330 Cameron Park Dr., Suite 550 Cameron Park CA, 95682	Project: BP Heritage #11132, Oakland, CA Project Number: G07TS-0030 Project Manager: Jay Johnson	MQE0882 Reported: 06/08/07 17:30
---	--	--

Total Purgeable Hydrocarbons by GC/MS (CA LUFT)
TestAmerica - Morgan Hill, CA

Analyte	Result	Reporting Limit	Units	Dilution	Batch	Prepared	Analyzed	Method	Notes
MW-10 (MQE0882-05) Water Sampled: 05/22/07 06:36 Received: 05/22/07 22:10									
Gasoline Range Organics (C4-C12)	13000	1000	ug/l	20	7F05002	06/05/07	06/05/07	LUFT GCMS	
<i>Surrogate: 1,2-Dichloroethane-d4</i>		<i>106 %</i>	<i>60-125</i>		<i>"</i>	<i>"</i>	<i>"</i>	<i>"</i>	
<i>Surrogate: Dibromofluoromethane</i>		<i>97 %</i>	<i>75-120</i>		<i>"</i>	<i>"</i>	<i>"</i>	<i>"</i>	
<i>Surrogate: Toluene-d8</i>		<i>100 %</i>	<i>80-120</i>		<i>"</i>	<i>"</i>	<i>"</i>	<i>"</i>	
<i>Surrogate: 4-Bromofluorobenzene</i>		<i>102 %</i>	<i>60-135</i>		<i>"</i>	<i>"</i>	<i>"</i>	<i>"</i>	

Stratus Environmental Inc. [Arco]
3330 Cameron Park Dr., Suite 550
Cameron Park CA, 95682

Project: BP Heritage #11132, Oakland, CA
Project Number: G07TS-0030
Project Manager: Jay Johnson

MQE0882
Reported:
06/08/07 17:30

Volatile Organic Compounds by EPA Method 8260B
TestAmerica - Morgan Hill, CA

Analyte	Result	Reporting Limit	Units	Dilution	Batch	Prepared	Analyzed	Method	Notes
MW-2 (MQE0882-01) Water Sampled: 05/22/07 07:12 Received: 05/22/07 22:10									
tert-Amyl methyl ether	ND	250	ug/l	500	7E31003	05/31/07	05/31/07	EPA 8260B	
Benzene	15000	250	"	"	"	"	"	"	
tert-Butyl alcohol	ND	10000	"	"	"	"	"	"	
Di-isopropyl ether	ND	250	"	"	"	"	"	"	
1,2-Dibromoethane (EDB)	ND	250	"	"	"	"	"	"	
1,2-Dichloroethane	ND	250	"	"	"	"	"	"	
Ethanol	ND	150000	"	"	"	"	"	"	
Ethyl tert-butyl ether	ND	250	"	"	"	"	"	"	
Ethylbenzene	4700	250	"	"	"	"	"	"	
Methyl tert-butyl ether	1000	250	"	"	"	"	"	"	
Toluene	8700	250	"	"	"	"	"	"	
Xylenes (total)	20000	250	"	"	"	"	"	"	
<i>Surrogate: Dibromofluoromethane</i>		101 %	75-120	"	"	"	"	"	
<i>Surrogate: 1,2-Dichloroethane-d4</i>		99 %	60-125	"	"	"	"	"	
<i>Surrogate: Toluene-d8</i>		100 %	80-120	"	"	"	"	"	
<i>Surrogate: 4-Bromofluorobenzene</i>		97 %	60-135	"	"	"	"	"	
MW-5 (MQE0882-02) Water Sampled: 05/22/07 05:46 Received: 05/22/07 22:10									
tert-Amyl methyl ether	ND	2.5	ug/l	5	7F01004	06/01/07	06/01/07	EPA 8260B	
tert-Butyl alcohol	ND	100	"	"	"	"	"	"	
Di-isopropyl ether	ND	2.5	"	"	"	"	"	"	
1,2-Dibromoethane (EDB)	ND	2.5	"	"	"	"	"	"	
1,2-Dichloroethane	ND	2.5	"	"	"	"	"	"	
Ethanol	ND	1500	"	"	"	"	"	"	
Ethyl tert-butyl ether	ND	2.5	"	"	"	"	"	"	
Ethylbenzene	74	2.5	"	"	"	"	"	"	
Methyl tert-butyl ether	26	2.5	"	"	"	"	"	"	
Toluene	8.8	2.5	"	"	"	"	"	"	
Xylenes (total)	100	2.5	"	"	"	"	"	"	
<i>Surrogate: Dibromofluoromethane</i>		101 %	75-120	"	"	"	"	"	
<i>Surrogate: 1,2-Dichloroethane-d4</i>		92 %	60-125	"	"	"	"	"	
<i>Surrogate: Toluene-d8</i>		98 %	80-120	"	"	"	"	"	
<i>Surrogate: 4-Bromofluorobenzene</i>		94 %	60-135	"	"	"	"	"	

Stratus Environmental Inc. [Arco]
3330 Cameron Park Dr., Suite 550
Cameron Park CA, 95682

Project: BP Heritage #11132, Oakland, CA
Project Number: G07TS-0030
Project Manager: Jay Johnson

MQE0882
Reported:
06/08/07 17:30

Volatile Organic Compounds by EPA Method 8260B
TestAmerica - Morgan Hill, CA

Analyte	Result	Reporting Limit	Units	Dilution	Batch	Prepared	Analyzed	Method	Notes
---------	--------	-----------------	-------	----------	-------	----------	----------	--------	-------

MW-5 (MQE0882-02RE1) Water Sampled: 05/22/07 05:46 Received: 05/22/07 22:10

Benzene	660	10	ug/l	20	7F01004	06/01/07	06/01/07	EPA 8260B	
Surrogate: Dibromofluoromethane		100 %	75-120		"	"	"	"	
Surrogate: 1,2-Dichloroethane-d4		104 %	60-125		"	"	"	"	
Surrogate: Toluene-d8		95 %	80-120		"	"	"	"	
Surrogate: 4-Bromofluorobenzene		98 %	60-135		"	"	"	"	

MW-8 (MQE0882-03) Water Sampled: 05/22/07 06:37 Received: 05/22/07 22:10

tert-Amyl methyl ether	ND	10	ug/l	20	7E31003	05/31/07	05/31/07	EPA 8260B	
Benzene	370	10	"	"	"	"	"	"	
tert-Butyl alcohol	ND	400	"	"	"	"	"	"	
Di-isopropyl ether	ND	10	"	"	"	"	"	"	
1,2-Dibromoethane (EDB)	ND	10	"	"	"	"	"	"	
1,2-Dichloroethane	ND	10	"	"	"	"	"	"	
Ethanol	ND	6000	"	"	"	"	"	"	
Ethyl tert-butyl ether	ND	10	"	"	"	"	"	"	
Ethylbenzene	760	10	"	"	"	"	"	"	
Methyl tert-butyl ether	11	10	"	"	"	"	"	"	
Toluene	51	10	"	"	"	"	"	"	
Xylenes (total)	1600	10	"	"	"	"	"	"	
Surrogate: Dibromofluoromethane		96 %	75-120		"	"	"	"	
Surrogate: 1,2-Dichloroethane-d4		103 %	60-125		"	"	"	"	
Surrogate: Toluene-d8		96 %	80-120		"	"	"	"	
Surrogate: 4-Bromofluorobenzene		95 %	60-135		"	"	"	"	

MW-9 (MQE0882-04) Water Sampled: 05/22/07 07:18 Received: 05/22/07 22:10

tert-Amyl methyl ether	ND	25	ug/l	50	7E31003	05/31/07	05/31/07	EPA 8260B	
Benzene	80	25	"	"	"	"	"	"	
tert-Butyl alcohol	ND	1000	"	"	"	"	"	"	
Di-isopropyl ether	ND	25	"	"	"	"	"	"	
1,2-Dibromoethane (EDB)	ND	25	"	"	"	"	"	"	
1,2-Dichloroethane	ND	25	"	"	"	"	"	"	
Ethanol	ND	15000	"	"	"	"	"	"	
Ethyl tert-butyl ether	ND	25	"	"	"	"	"	"	
Ethylbenzene	460	25	"	"	"	"	"	"	
Methyl tert-butyl ether	ND	25	"	"	"	"	"	"	
Toluene	ND	25	"	"	"	"	"	"	
Xylenes (total)	1200	25	"	"	"	"	"	"	
Surrogate: Dibromofluoromethane		98 %	75-120		"	"	"	"	

TestAmerica - Morgan Hill, CA

The results in this report apply to the samples analyzed in accordance with the chain of custody document. Unless otherwise stated, results are reported on a wet weight basis. This analytical report must be reproduced in its entirety.

Stratus Environmental Inc. [Arco]
3330 Cameron Park Dr., Suite 550
Cameron Park CA, 95682

Project: BP Heritage #11132, Oakland, CA
Project Number: G07TS-0030
Project Manager: Jay Johnson

MQE0882
Reported:
06/08/07 17:30

Volatile Organic Compounds by EPA Method 8260B
TestAmerica - Morgan Hill, CA

Analyte	Result	Reporting Limit	Units	Dilution	Batch	Prepared	Analyzed	Method	Notes
MW-9 (MQE0882-04) Water Sampled: 05/22/07 07:18 Received: 05/22/07 22:10									
Surrogate: 1,2-Dichloroethane-d4		95 %	60-125		7E31003	05/31/07	05/31/07	EPA 8260B	
Surrogate: Toluene-d8		99 %	80-120		"	"	"	"	
Surrogate: 4-Bromofluorobenzene		92 %	60-135		"	"	"	"	
MW-10 (MQE0882-05) Water Sampled: 05/22/07 06:36 Received: 05/22/07 22:10									
tert-Amyl methyl ether	ND	10	ug/l	20	7F05002	06/05/07	06/05/07	EPA 8260B	
Benzene	810	10	"	"	"	"	"	"	
tert-Butyl alcohol	ND	400	"	"	"	"	"	"	
Di-isopropyl ether	ND	10	"	"	"	"	"	"	
1,2-Dibromoethane (EDB)	ND	10	"	"	"	"	"	"	
1,2-Dichloroethane	ND	10	"	"	"	"	"	"	
Ethanol	ND	6000	"	"	"	"	"	"	
Ethyl tert-butyl ether	ND	10	"	"	"	"	"	"	
Ethylbenzene	750	10	"	"	"	"	"	"	
Methyl tert-butyl ether	15	10	"	"	"	"	"	"	
Toluene	130	10	"	"	"	"	"	"	
Xylenes (total)	2200	10	"	"	"	"	"	"	
Surrogate: Dibromofluoromethane		97 %	75-120		"	"	"	"	
Surrogate: 1,2-Dichloroethane-d4		106 %	60-125		"	"	"	"	
Surrogate: Toluene-d8		100 %	80-120		"	"	"	"	
Surrogate: 4-Bromofluorobenzene		102 %	60-135		"	"	"	"	

Stratus Environmental Inc. [Arco]
3330 Cameron Park Dr., Suite 550
Cameron Park CA, 95682

Project: BP Heritage #11132, Oakland, CA
Project Number: G07TS-0030
Project Manager: Jay Johnson

MQE0882
Reported:
06/08/07 17:30

Total Purgeable Hydrocarbons by GC/MS (CA LUFT) - Quality Control
TestAmerica - Morgan Hill, CA

Analyte	Result	Reporting Limit	Units	Spike Level	Source Result	%REC	%REC Limits	RPD	RPD Limit	Notes
---------	--------	-----------------	-------	-------------	---------------	------	-------------	-----	-----------	-------

Batch 7E31003 - EPA 5030B P/T / LUFT GCMS

Blank (7E31003-BLK1)

Prepared & Analyzed: 05/31/07

Gasoline Range Organics (C4-C12)	ND	50	ug/l							
Surrogate: 1,2-Dichloroethane-d4	2.46		"	2.50		98	60-125			
Surrogate: Dibromofluoromethane	2.52		"	2.50		101	75-120			
Surrogate: Toluene-d8	2.53		"	2.50		101	80-120			
Surrogate: 4-Bromofluorobenzene	2.25		"	2.50		90	60-135			

Laboratory Control Sample (7E31003-BS2)

Prepared & Analyzed: 05/31/07

Gasoline Range Organics (C4-C12)	452	50	ug/l	500		90	65-120			
Surrogate: 1,2-Dichloroethane-d4	2.42		"	2.50		97	60-125			
Surrogate: Dibromofluoromethane	2.43		"	2.50		97	75-120			
Surrogate: Toluene-d8	2.53		"	2.50		101	80-120			
Surrogate: 4-Bromofluorobenzene	2.40		"	2.50		96	60-135			

Laboratory Control Sample Dup (7E31003-BSD2)

Prepared & Analyzed: 05/31/07

Gasoline Range Organics (C4-C12)	454	50	ug/l	500		91	65-120	0.4	20	
Surrogate: 1,2-Dichloroethane-d4	2.66		"	2.50		106	60-125			
Surrogate: Dibromofluoromethane	2.35		"	2.50		94	75-120			
Surrogate: Toluene-d8	2.46		"	2.50		98	80-120			
Surrogate: 4-Bromofluorobenzene	2.64		"	2.50		106	60-135			

Batch 7F01004 - EPA 5030B P/T / LUFT GCMS

Blank (7F01004-BLK1)

Prepared & Analyzed: 06/01/07

Gasoline Range Organics (C4-C12)	ND	50	ug/l							
Surrogate: 1,2-Dichloroethane-d4	2.66		"	2.50		106	60-125			
Surrogate: Dibromofluoromethane	2.47		"	2.50		99	75-120			
Surrogate: Toluene-d8	2.41		"	2.50		96	80-120			
Surrogate: 4-Bromofluorobenzene	2.48		"	2.50		99	60-135			

Stratus Environmental Inc. [Arco]
3330 Cameron Park Dr., Suite 550
Cameron Park CA, 95682

Project: BP Heritage #11132, Oakland, CA
Project Number: G07TS-0030
Project Manager: Jay Johnson

MQE0882
Reported:
06/08/07 17:30

Total Purgeable Hydrocarbons by GC/MS (CA LUFT) - Quality Control
TestAmerica - Morgan Hill, CA

Analyte	Result	Reporting Limit	Units	Spike Level	Source Result	%REC	%REC Limits	RPD	RPD Limit	Notes
---------	--------	-----------------	-------	-------------	---------------	------	-------------	-----	-----------	-------

Batch 7F01004 - EPA 5030B P/T / LUFT GCMS

Laboratory Control Sample (7F01004-BS2)

Prepared & Analyzed: 06/01/07

Gasoline Range Organics (C4-C12)	415	50	ug/l	500		83	65-120			
Surrogate: 1,2-Dichloroethane-d4	2.37		"	2.50		95	60-125			
Surrogate: Dibromofluoromethane	2.46		"	2.50		98	75-120			
Surrogate: Toluene-d8	2.42		"	2.50		97	80-120			
Surrogate: 4-Bromofluorobenzene	2.56		"	2.50		102	60-135			

Laboratory Control Sample Dup (7F01004-BSD2)

Prepared & Analyzed: 06/01/07

Gasoline Range Organics (C4-C12)	429	50	ug/l	500		86	65-120	3	20	
Surrogate: 1,2-Dichloroethane-d4	2.46		"	2.50		98	60-125			
Surrogate: Dibromofluoromethane	2.42		"	2.50		97	75-120			
Surrogate: Toluene-d8	2.40		"	2.50		96	80-120			
Surrogate: 4-Bromofluorobenzene	2.53		"	2.50		101	60-135			

Batch 7F05002 - EPA 5030B P/T / LUFT GCMS

Blank (7F05002-BLK1)

Prepared & Analyzed: 06/05/07

Gasoline Range Organics (C4-C12)	ND	50	ug/l							
Surrogate: 1,2-Dichloroethane-d4	2.69		"	2.50		108	60-125			
Surrogate: Dibromofluoromethane	2.51		"	2.50		100	75-120			
Surrogate: Toluene-d8	2.41		"	2.50		96	80-120			
Surrogate: 4-Bromofluorobenzene	2.23		"	2.50		89	60-135			

Laboratory Control Sample (7F05002-BS2)

Prepared & Analyzed: 06/05/07

Gasoline Range Organics (C4-C12)	442	50	ug/l	500		88	65-120			
Surrogate: 1,2-Dichloroethane-d4	2.66		"	2.50		106	60-125			
Surrogate: Dibromofluoromethane	2.47		"	2.50		99	75-120			
Surrogate: Toluene-d8	2.52		"	2.50		101	80-120			
Surrogate: 4-Bromofluorobenzene	2.56		"	2.50		102	60-135			

Stratus Environmental Inc. [Arco] 3330 Cameron Park Dr., Suite 550 Cameron Park CA, 95682	Project: BP Heritage #11132, Oakland, CA Project Number: G07TS-0030 Project Manager: Jay Johnson	MQE0882 Reported: 06/08/07 17:30
---	--	--

Total Purgeable Hydrocarbons by GC/MS (CA LUFT) - Quality Control
TestAmerica - Morgan Hill, CA

Analyte	Result	Reporting Limit	Units	Spike Level	Source Result	%REC	%REC Limits	RPD	RPD Limit	Notes
---------	--------	-----------------	-------	-------------	---------------	------	-------------	-----	-----------	-------

Batch 7F05002 - EPA 5030B P/T / LUFT GCMS

Laboratory Control Sample Dup (7F05002-BSD2)				Prepared & Analyzed: 06/05/07						
Gasoline Range Organics (C4-C12)	444	50	ug/l	500	89	65-120	0.5	20		
Surrogate: 1,2-Dichloroethane-d4	2.76		"	2.50	110	60-125				
Surrogate: Dibromofluoromethane	2.48		"	2.50	99	75-120				
Surrogate: Toluene-d8	2.52		"	2.50	101	80-120				
Surrogate: 4-Bromofluorobenzene	2.45		"	2.50	98	60-135				

Stratus Environmental Inc. [Arco]
3330 Cameron Park Dr., Suite 550
Cameron Park CA, 95682

Project: BP Heritage #11132, Oakland, CA
Project Number: G07TS-0030
Project Manager: Jay Johnson

MQE0882
Reported:
06/08/07 17:30

Volatile Organic Compounds by EPA Method 8260B - Quality Control
TestAmerica - Morgan Hill, CA

Analyte	Result	Reporting Limit	Units	Spike Level	Source Result	%REC	%REC Limits	RPD	RPD Limit	Notes
---------	--------	-----------------	-------	-------------	---------------	------	-------------	-----	-----------	-------

Batch 7E31003 - EPA 5030B P/T / EPA 8260B

Blank (7E31003-BLK1)

Prepared & Analyzed: 05/31/07

tert-Amyl methyl ether	ND	0.50	ug/l							
Benzene	ND	0.50	"							
tert-Butyl alcohol	ND	5.0	"							
Di-isopropyl ether	ND	0.50	"							
1,2-Dibromoethane (EDB)	ND	0.50	"							
1,2-Dichloroethane	ND	0.50	"							
Ethanol	ND	300	"							
Ethyl tert-butyl ether	ND	0.50	"							
Ethylbenzene	ND	0.50	"							
Methyl tert-butyl ether	ND	0.50	"							
Toluene	ND	0.50	"							
Xylenes (total)	ND	0.50	"							
<i>Surrogate: Dibromofluoromethane</i>	2.52		"	2.50		101	75-120			
<i>Surrogate: 1,2-Dichloroethane-d4</i>	2.46		"	2.50		98	60-125			
<i>Surrogate: Toluene-d8</i>	2.53		"	2.50		101	80-120			
<i>Surrogate: 4-Bromofluorobenzene</i>	2.25		"	2.50		90	60-135			

Laboratory Control Sample (7E31003-BS1)

Prepared & Analyzed: 05/31/07

tert-Amyl methyl ether	11.2	0.50	ug/l	10.0		112	65-135			
Benzene	9.95	0.50	"	10.0		100	75-120			
tert-Butyl alcohol	193	5.0	"	200		96	60-135			
Di-isopropyl ether	9.79	0.50	"	10.0		98	70-130			
1,2-Dibromoethane (EDB)	11.0	0.50	"	10.0		110	80-135			
1,2-Dichloroethane	11.3	0.50	"	10.0		113	70-125			
Ethanol	184	300	"	200		92	15-150			
Ethyl tert-butyl ether	10.8	0.50	"	10.0		108	65-130			
Ethylbenzene	9.76	0.50	"	10.0		98	75-120			
Methyl tert-butyl ether	10.8	0.50	"	10.0		108	50-140			
Toluene	10.8	0.50	"	10.0		108	75-120			
Xylenes (total)	29.8	0.50	"	30.0		99	75-120			
<i>Surrogate: Dibromofluoromethane</i>	2.34		"	2.50		94	75-120			
<i>Surrogate: 1,2-Dichloroethane-d4</i>	2.69		"	2.50		108	60-125			
<i>Surrogate: Toluene-d8</i>	2.48		"	2.50		99	80-120			
<i>Surrogate: 4-Bromofluorobenzene</i>	2.34		"	2.50		94	60-135			

Stratus Environmental Inc. [Arco]
3330 Cameron Park Dr., Suite 550
Cameron Park CA, 95682

Project: BP Heritage #11132, Oakland, CA
Project Number: G07TS-0030
Project Manager: Jay Johnson

MQE0882
Reported:
06/08/07 17:30

Volatile Organic Compounds by EPA Method 8260B - Quality Control
TestAmerica - Morgan Hill, CA

Analyte	Result	Reporting Limit	Units	Spike Level	Source Result	%REC	%REC Limits	RPD	RPD Limit	Notes
---------	--------	-----------------	-------	-------------	---------------	------	-------------	-----	-----------	-------

Batch 7E31003 - EPA 5030B P/T / EPA 8260B

Matrix Spike (7E31003-MS1)	Source: MQE0734-20			Prepared & Analyzed: 05/31/07						
tert-Amyl methyl ether	11.9	0.50	ug/l	10.0	ND	119	65-135			
Benzene	10.4	0.50	"	10.0	ND	104	75-120			
tert-Butyl alcohol	209	5.0	"	200	10	100	60-135			
Di-isopropyl ether	10.5	0.50	"	10.0	ND	105	70-130			
1,2-Dibromoethane (EDB)	12.5	0.50	"	10.0	ND	125	80-135			
1,2-Dichloroethane	12.1	0.50	"	10.0	ND	121	70-125			
Ethanol	198	300	"	200	ND	99	15-150			
Ethyl tert-butyl ether	11.8	0.50	"	10.0	ND	118	65-130			
Ethylbenzene	9.82	0.50	"	10.0	ND	98	75-120			
Methyl tert-butyl ether	17.4	0.50	"	10.0	5.1	123	50-140			
Toluene	11.3	0.50	"	10.0	ND	113	75-120			
Xylenes (total)	30.6	0.50	"	30.0	ND	102	75-120			
<i>Surrogate: Dibromofluoromethane</i>	<i>2.46</i>		<i>"</i>	<i>2.50</i>		<i>98</i>	<i>75-120</i>			
<i>Surrogate: 1,2-Dichloroethane-d4</i>	<i>2.60</i>		<i>"</i>	<i>2.50</i>		<i>104</i>	<i>60-125</i>			
<i>Surrogate: Toluene-d8</i>	<i>2.53</i>		<i>"</i>	<i>2.50</i>		<i>101</i>	<i>80-120</i>			
<i>Surrogate: 4-Bromofluorobenzene</i>	<i>2.38</i>		<i>"</i>	<i>2.50</i>		<i>95</i>	<i>60-135</i>			

Matrix Spike Dup (7E31003-MSD1)	Source: MQE0734-20			Prepared & Analyzed: 05/31/07						
tert-Amyl methyl ether	11.4	0.50	ug/l	10.0	ND	114	65-135	4	25	
Benzene	10.2	0.50	"	10.0	ND	102	75-120	2	20	
tert-Butyl alcohol	211	5.0	"	200	10	100	60-135	1	25	
Di-isopropyl ether	9.83	0.50	"	10.0	ND	98	70-130	7	25	
1,2-Dibromoethane (EDB)	11.6	0.50	"	10.0	ND	116	80-135	7	30	
1,2-Dichloroethane	11.5	0.50	"	10.0	ND	115	70-125	5	25	
Ethanol	183	300	"	200	ND	92	15-150	8	25	
Ethyl tert-butyl ether	11.0	0.50	"	10.0	ND	110	65-130	7	25	
Ethylbenzene	10.4	0.50	"	10.0	ND	104	75-120	6	20	
Methyl tert-butyl ether	16.3	0.50	"	10.0	5.1	112	50-140	7	25	
Toluene	10.8	0.50	"	10.0	ND	108	75-120	5	25	
Xylenes (total)	29.7	0.50	"	30.0	ND	99	75-120	3	20	
<i>Surrogate: Dibromofluoromethane</i>	<i>2.46</i>		<i>"</i>	<i>2.50</i>		<i>98</i>	<i>75-120</i>			
<i>Surrogate: 1,2-Dichloroethane-d4</i>	<i>2.53</i>		<i>"</i>	<i>2.50</i>		<i>101</i>	<i>60-125</i>			
<i>Surrogate: Toluene-d8</i>	<i>2.50</i>		<i>"</i>	<i>2.50</i>		<i>100</i>	<i>80-120</i>			
<i>Surrogate: 4-Bromofluorobenzene</i>	<i>2.68</i>		<i>"</i>	<i>2.50</i>		<i>107</i>	<i>60-135</i>			

Stratus Environmental Inc. [Arco]
3330 Cameron Park Dr., Suite 550
Cameron Park CA, 95682

Project: BP Heritage #11132, Oakland, CA
Project Number: G07TS-0030
Project Manager: Jay Johnson

MQE0882
Reported:
06/08/07 17:30

Volatile Organic Compounds by EPA Method 8260B - Quality Control
TestAmerica - Morgan Hill, CA

Analyte	Result	Reporting Limit	Units	Spike Level	Source Result	%REC	%REC Limits	RPD	RPD Limit	Notes
---------	--------	-----------------	-------	-------------	---------------	------	-------------	-----	-----------	-------

Batch 7F01004 - EPA 5030B P/T / EPA 8260B

Blank (7F01004-BLK1)

Prepared & Analyzed: 06/01/07

tert-Amyl methyl ether	ND	0.50	ug/l							
Benzene	ND	0.50	"							
tert-Butyl alcohol	ND	5.0	"							
Di-isopropyl ether	ND	0.50	"							
1,2-Dibromoethane (EDB)	ND	0.50	"							
1,2-Dichloroethane	ND	0.50	"							
Ethanol	ND	300	"							
Ethyl tert-butyl ether	ND	0.50	"							
Ethylbenzene	ND	0.50	"							
Methyl tert-butyl ether	ND	0.50	"							
Toluene	ND	0.50	"							
Xylenes (total)	ND	0.50	"							
<i>Surrogate: Dibromofluoromethane</i>	2.47		"	2.50		99	75-120			
<i>Surrogate: 1,2-Dichloroethane-d4</i>	2.66		"	2.50		106	60-125			
<i>Surrogate: Toluene-d8</i>	2.41		"	2.50		96	80-120			
<i>Surrogate: 4-Bromofluorobenzene</i>	2.48		"	2.50		99	60-135			

Laboratory Control Sample (7F01004-BS1)

Prepared & Analyzed: 06/01/07

tert-Amyl methyl ether	9.77	0.50	ug/l	10.0		98	65-135			
Benzene	9.45	0.50	"	10.0		94	75-120			
tert-Butyl alcohol	201	5.0	"	200		100	60-135			
Di-isopropyl ether	9.81	0.50	"	10.0		98	70-130			
1,2-Dibromoethane (EDB)	10.2	0.50	"	10.0		102	80-135			
1,2-Dichloroethane	9.80	0.50	"	10.0		98	70-125			
Ethanol	203	300	"	200		102	15-150			
Ethyl tert-butyl ether	9.71	0.50	"	10.0		97	65-130			
Ethylbenzene	10.2	0.50	"	10.0		102	75-120			
Methyl tert-butyl ether	9.87	0.50	"	10.0		99	50-140			
Toluene	9.59	0.50	"	10.0		96	75-120			
Xylenes (total)	30.2	0.50	"	30.0		101	75-120			
<i>Surrogate: Dibromofluoromethane</i>	2.57		"	2.50		103	75-120			
<i>Surrogate: 1,2-Dichloroethane-d4</i>	2.38		"	2.50		95	60-125			
<i>Surrogate: Toluene-d8</i>	2.38		"	2.50		95	80-120			
<i>Surrogate: 4-Bromofluorobenzene</i>	2.51		"	2.50		100	60-135			

Stratus Environmental Inc. [Arco]
3330 Cameron Park Dr., Suite 550
Cameron Park CA, 95682

Project: BP Heritage #11132, Oakland, CA
Project Number: G07TS-0030
Project Manager: Jay Johnson

MQE0882
Reported:
06/08/07 17:30

Volatile Organic Compounds by EPA Method 8260B - Quality Control
TestAmerica - Morgan Hill, CA

Analyte	Result	Reporting Limit	Units	Spike Level	Source Result	%REC	%REC Limits	RPD	RPD Limit	Notes
---------	--------	-----------------	-------	-------------	---------------	------	-------------	-----	-----------	-------

Batch 7F01004 - EPA 5030B P/T / EPA 8260B

Matrix Spike (7F01004-MS1)	Source: MQE0882-02			Prepared & Analyzed: 06/01/07						
tert-Amyl methyl ether	49.8	2.5	ug/l	50.0	ND	100	65-135			
Benzene	481	2.5	"	50.0	480	2	75-120			MHA
tert-Butyl alcohol	1030	2.5	"	1000	68	96	60-135			
Di-isopropyl ether	49.4	2.5	"	50.0	ND	99	70-130			
1,2-Dibromoethane (EDB)	52.1	2.5	"	50.0	ND	104	80-135			
1,2-Dichloroethane	49.6	2.5	"	50.0	ND	99	70-125			
Ethanol	938	1500	"	1000	ND	94	15-150			
Ethyl tert-butyl ether	49.2	2.5	"	50.0	ND	98	65-130			
Ethylbenzene	115	2.5	"	50.0	74	82	75-120			
Methyl tert-butyl ether	74.4	2.5	"	50.0	26	97	50-140			
Toluene	54.6	2.5	"	50.0	8.8	92	75-120			
Xylenes (total)	239	2.5	"	150	100	93	75-120			
<i>Surrogate: Dibromofluoromethane</i>	<i>2.53</i>		<i>"</i>	<i>2.50</i>		<i>101</i>	<i>75-120</i>			
<i>Surrogate: 1,2-Dichloroethane-d4</i>	<i>2.41</i>		<i>"</i>	<i>2.50</i>		<i>96</i>	<i>60-125</i>			
<i>Surrogate: Toluene-d8</i>	<i>2.46</i>		<i>"</i>	<i>2.50</i>		<i>98</i>	<i>80-120</i>			
<i>Surrogate: 4-Bromofluorobenzene</i>	<i>2.56</i>		<i>"</i>	<i>2.50</i>		<i>102</i>	<i>60-135</i>			

Matrix Spike Dup (7F01004-MSD1)	Source: MQE0882-02			Prepared & Analyzed: 06/01/07						
tert-Amyl methyl ether	51.8	2.5	ug/l	50.0	ND	104	65-135	4	25	
Benzene	477	2.5	"	50.0	480	0	75-120	0.8	20	MHA
tert-Butyl alcohol	1080	2.5	"	1000	68	101	60-135	5	25	
Di-isopropyl ether	52.8	2.5	"	50.0	ND	106	70-130	7	25	
1,2-Dibromoethane (EDB)	54.0	2.5	"	50.0	ND	108	80-135	4	30	
1,2-Dichloroethane	53.0	2.5	"	50.0	ND	106	70-125	7	25	
Ethanol	896	1500	"	1000	ND	90	15-150	5	25	
Ethyl tert-butyl ether	52.4	2.5	"	50.0	ND	105	65-130	6	25	
Ethylbenzene	115	2.5	"	50.0	74	82	75-120	0	20	
Methyl tert-butyl ether	79.0	2.5	"	50.0	26	106	50-140	6	25	
Toluene	55.1	2.5	"	50.0	8.8	93	75-120	0.9	25	
Xylenes (total)	238	2.5	"	150	100	92	75-120	0.4	20	
<i>Surrogate: Dibromofluoromethane</i>	<i>2.59</i>		<i>"</i>	<i>2.50</i>		<i>104</i>	<i>75-120</i>			
<i>Surrogate: 1,2-Dichloroethane-d4</i>	<i>2.66</i>		<i>"</i>	<i>2.50</i>		<i>106</i>	<i>60-125</i>			
<i>Surrogate: Toluene-d8</i>	<i>2.52</i>		<i>"</i>	<i>2.50</i>		<i>101</i>	<i>80-120</i>			
<i>Surrogate: 4-Bromofluorobenzene</i>	<i>2.65</i>		<i>"</i>	<i>2.50</i>		<i>106</i>	<i>60-135</i>			

TestAmerica - Morgan Hill, CA

The results in this report apply to the samples analyzed in accordance with the chain of custody document. Unless otherwise stated, results are reported on a wet weight basis. This analytical report must be reproduced in its entirety.

Stratus Environmental Inc. [Arco]
3330 Cameron Park Dr., Suite 550
Cameron Park CA, 95682

Project: BP Heritage #11132, Oakland, CA
Project Number: G07TS-0030
Project Manager: Jay Johnson

MQE0882
Reported:
06/08/07 17:30

Volatile Organic Compounds by EPA Method 8260B - Quality Control
TestAmerica - Morgan Hill, CA

Analyte	Result	Reporting Limit	Units	Spike Level	Source Result	%REC	%REC Limits	RPD	RPD Limit	Notes
---------	--------	-----------------	-------	-------------	---------------	------	-------------	-----	-----------	-------

Batch 7F05002 - EPA 5030B P/T / EPA 8260B

Blank (7F05002-BLK1)

Prepared & Analyzed: 06/05/07

tert-Amyl methyl ether	ND	0.50	ug/l							
Benzene	ND	0.50	"							
tert-Butyl alcohol	ND	5.0	"							
Di-isopropyl ether	ND	0.50	"							
1,2-Dibromoethane (EDB)	ND	0.50	"							
1,2-Dichloroethane	ND	0.50	"							
Ethanol	ND	300	"							
Ethyl tert-butyl ether	ND	0.50	"							
Ethylbenzene	ND	0.50	"							
Methyl tert-butyl ether	ND	0.50	"							
Toluene	ND	0.50	"							
Xylenes (total)	ND	0.50	"							
<i>Surrogate: Dibromofluoromethane</i>	2.51		"	2.50		100	75-120			
<i>Surrogate: 1,2-Dichloroethane-d4</i>	2.69		"	2.50		108	75-120			
<i>Surrogate: Toluene-d8</i>	2.41		"	2.50		96	80-120			
<i>Surrogate: 4-Bromofluorobenzene</i>	2.23		"	2.50		89	60-135			

Laboratory Control Sample (7F05002-BS1)

Prepared & Analyzed: 06/05/07

tert-Amyl methyl ether	11.2	0.50	ug/l	10.0		112	65-135			
Benzene	10.4	0.50	"	10.0		104	75-120			
tert-Butyl alcohol	197	5.0	"	200		98	60-135			
Di-isopropyl ether	10.4	0.50	"	10.0		104	70-130			
1,2-Dibromoethane (EDB)	10.8	0.50	"	10.0		108	80-135			
1,2-Dichloroethane	10.8	0.50	"	10.0		108	70-125			
Ethanol	160	300	"	200		80	15-150			
Ethyl tert-butyl ether	10.9	0.50	"	10.0		109	65-130			
Ethylbenzene	10.6	0.50	"	10.0		106	75-120			
Methyl tert-butyl ether	10.9	0.50	"	10.0		109	50-140			
Toluene	10.7	0.50	"	10.0		107	75-120			
Xylenes (total)	32.1	0.50	"	30.0		107	75-120			
<i>Surrogate: Dibromofluoromethane</i>	2.59		"	2.50		104	75-120			
<i>Surrogate: 1,2-Dichloroethane-d4</i>	2.75		"	2.50		110	75-120			
<i>Surrogate: Toluene-d8</i>	2.57		"	2.50		103	80-120			
<i>Surrogate: 4-Bromofluorobenzene</i>	2.54		"	2.50		102	60-135			

TestAmerica - Morgan Hill, CA

The results in this report apply to the samples analyzed in accordance with the chain of custody document. Unless otherwise stated, results are reported on a wet weight basis. This analytical report must be reproduced in its entirety.

Stratus Environmental Inc. [Arco]
3330 Cameron Park Dr., Suite 550
Cameron Park CA, 95682

Project: BP Heritage #11132, Oakland, CA
Project Number: G07TS-0030
Project Manager: Jay Johnson

MQE0882
Reported:
06/08/07 17:30

Volatile Organic Compounds by EPA Method 8260B - Quality Control
TestAmerica - Morgan Hill, CA

Analyte	Result	Reporting Limit	Units	Spike Level	Source Result	%REC	%REC Limits	RPD	RPD Limit	Notes
---------	--------	-----------------	-------	-------------	---------------	------	-------------	-----	-----------	-------

Batch 7F05002 - EPA 5030B P/T / EPA 8260B

Matrix Spike (7F05002-MS1)	Source: MQF0070-03			Prepared & Analyzed: 06/05/07						
tert-Amyl methyl ether	11.0	0.50	ug/l	10.0	ND	110	65-135			
Benzene	10.3	0.50	"	10.0	ND	103	75-120			
tert-Butyl alcohol	197	5.0	"	200	ND	98	60-135			
Di-isopropyl ether	10.4	0.50	"	10.0	ND	104	70-130			
1,2-Dibromoethane (EDB)	10.5	0.50	"	10.0	ND	105	80-135			
1,2-Dichloroethane	10.7	0.50	"	10.0	0.16	105	70-125			
Ethanol	157	300	"	200	ND	78	15-150			
Ethyl tert-butyl ether	10.8	0.50	"	10.0	ND	108	65-130			
Ethylbenzene	10.5	0.50	"	10.0	ND	105	75-120			
Methyl tert-butyl ether	12.0	0.50	"	10.0	1.4	106	50-140			
Toluene	10.3	0.50	"	10.0	ND	103	75-120			
Xylenes (total)	31.9	0.50	"	30.0	ND	106	75-120			
<i>Surrogate: Dibromofluoromethane</i>	2.56		"	2.50		102	75-120			
<i>Surrogate: 1,2-Dichloroethane-d4</i>	2.63		"	2.50		105	75-120			
<i>Surrogate: Toluene-d8</i>	2.44		"	2.50		98	80-120			
<i>Surrogate: 4-Bromofluorobenzene</i>	2.50		"	2.50		100	60-135			

Matrix Spike Dup (7F05002-MSD1)	Source: MQF0070-03			Prepared & Analyzed: 06/05/07						
tert-Amyl methyl ether	11.0	0.50	ug/l	10.0	ND	110	65-135	0	25	
Benzene	10.2	0.50	"	10.0	ND	102	75-120	1	20	
tert-Butyl alcohol	191	5.0	"	200	ND	96	60-135	3	25	
Di-isopropyl ether	10.4	0.50	"	10.0	ND	104	70-130	0	25	
1,2-Dibromoethane (EDB)	10.6	0.50	"	10.0	ND	106	80-135	0.9	30	
1,2-Dichloroethane	10.7	0.50	"	10.0	0.16	105	70-125	0	25	
Ethanol	159	300	"	200	ND	80	15-150	1	25	
Ethyl tert-butyl ether	10.8	0.50	"	10.0	ND	108	65-130	0	25	
Ethylbenzene	10.5	0.50	"	10.0	ND	105	75-120	0	20	
Methyl tert-butyl ether	12.3	0.50	"	10.0	1.4	109	50-140	2	25	
Toluene	10.4	0.50	"	10.0	ND	104	75-120	1	25	
Xylenes (total)	31.8	0.50	"	30.0	ND	106	75-120	0.3	20	
<i>Surrogate: Dibromofluoromethane</i>	2.63		"	2.50		105	75-120			
<i>Surrogate: 1,2-Dichloroethane-d4</i>	2.70		"	2.50		108	75-120			
<i>Surrogate: Toluene-d8</i>	2.46		"	2.50		98	80-120			
<i>Surrogate: 4-Bromofluorobenzene</i>	2.55		"	2.50		102	60-135			

TestAmerica - Morgan Hill, CA

The results in this report apply to the samples analyzed in accordance with the chain of custody document. Unless otherwise stated, results are reported on a wet weight basis. This analytical report must be reproduced in its entirety.

Stratus Environmental Inc. [Arco]
3330 Cameron Park Dr., Suite 550
Cameron Park CA, 95682

Project: BP Heritage #11132, Oakland, CA
Project Number: G07TS-0030
Project Manager: Jay Johnson

MQE0882
Reported:
06/08/07 17:30

Notes and Definitions

MHA Due to high levels of analyte in the sample, the MS/MSD calculation does not provide useful spike recovery information. See Blank Spike (LCS).

DET Analyte DETECTED

ND Analyte NOT DETECTED at or above the reporting limit or MDL, if MDL is specified

NR Not Reported

dry Sample results reported on a dry weight basis

RPD Relative Percent Difference

TEST AMERICA SAMPLE RECEIPT LOG

CLIENT NAME: ARCO 11132
 REC. BY (PRINT) JULIENG.
 WORKORDER: M. Q. E. 882

DATE REC'D AT LAB: 5/22/07
 TIME REC'D AT LAB: 2:10
 DATE LOGGED IN: 5/24/07

For Regulatory Purposes?
 DRINKING WATER YES / NO
 WASTE WATER YES / NO

CIRCLE THE APPROPRIATE RESPONSE		LAB SAMPLE #	CLIENT ID	CONTAINER DESCRIPTION	PRESERVATIVE	pH	SAMPLE MATRIX	DATE SAMPLED	REMARKS: CONDITION (ETC.)
1. Custody Seal(s)	Present / Absent Intact / Broken*								Julie Ng. 5/23/07 SEE COC
2. Chain-of-Custody	Present / Absent*								
3. Traffic Reports or Packing List:	Present / Absent*								
4. Airbill:	Airbill / Slicker Present / Absent*								
5. Airbill #:	—								
6. Sample Labels:	Present / Absent*								
7. Sample IDs:	Listed / Not Listed on Chain-of-Custody								
8. Sample Condition:	Intact / Broken* / Leaking*								
9. Does information on chain-of-custody, traffic reports and sample labels agree?	Yes / No*								
10. Sample received within hold time?	Yes / No*								
11. Adequate sample volume received?	Yes / No*								
12. Proper preservatives used?	Yes / No*								
13. Trip Blank / Temp Blank Received? (circle which, if yes)	Yes / No*								
14. Read Temp: <u>4.6°C</u> Corrected Temp: <u>↓</u> Is corrected temp 4 +/- 2°C? <u>Yes</u> / No*									

(Acceptance range for samples requiring thermal pres.)
 **Exception (if any): METALS / DFF ON ICE or Problem COC

IF CIRCLED, CONTACT PROJECT MANAGER AND ATTACH RECORD OF RESOLUTION.

TEST AMERICA SAMPLE RECEIPT LOG

CLIENT NAME: ARCO 11132
 REC. BY (PRINT) JULIENG
 WORKORDER: MREQ 882

DATE REC'D AT LAB: 5/29/07
 TIME REC'D AT LAB: 9:10
 DATE LOGGED IN: 5/24/07

For Regulatory Purposes?
 DRINKING WATER YES / NO
 WASTE WATER YES / NO

CIRCLE THE APPROPRIATE RESPONSE	LAB SAMPLE #	CLIENT ID	CONTAINER DESCRIPTION	PRESERVATIVE	pH	SAMPLE MATRIX	DATE SAMPLED	REMARKS: CONDITION (ETC.)
1. Custody Seal(s) Present / Absent Intact / Broken <input checked="" type="radio"/>								<div style="transform: rotate(-45deg); font-size: 2em; font-weight: bold;"> Julie Ng 5/23/07 SEE COC </div>
2. Chain-of-Custody Present / Absent* <input checked="" type="radio"/>								
3. Traffic Reports or Packing List: Present / Absent <input checked="" type="radio"/>								
4. Airbill: Airbill / Slicker Present / Absent <input checked="" type="radio"/>								
5. Airbill # _____								
6. Sample Labels: Present / Absent <input checked="" type="radio"/>								
7. Sample IDs: Listed / Not Listed on Chain-of-Custody <input checked="" type="radio"/>								
8. Sample Condition: Intact / Broken* / Leaking* <input checked="" type="radio"/>								
9. Does information on chain-of-custody, traffic reports and sample labels agree? <input checked="" type="radio"/> Yes / No*								
10. Sample received within hold time? <input checked="" type="radio"/> Yes / No*								
11. Adequate sample volume received? <input checked="" type="radio"/> Yes / No*								
12. Proper preservatives used? <input checked="" type="radio"/> Yes / No*								
13. Trip Blank / Temp Blank Received? (circle which, if yes) Yes / No <input checked="" type="radio"/>								
14. Read Temp: <u>4.6°C</u> Corrected Temp: <u>✓</u> Is corrected temp 4 +/- 2°C? <input checked="" type="radio"/> Yes / No**								

(Acceptance range for samples requiring thermal pres)
 **Exception (if any): METALS / DFF ON ICE or Problem COC

*IF CIRCLED, CONTACT PROJECT MANAGER AND ATTACH RECORD OF RESOLUTION.

(27) 6-26-07 1132 Outland Arco
CHILL

0700 onsite check wells

ORIGINAL

	DTP	DTW	
MW-1	21.35	21.40	Black Product Bail 1 Gall
MW-8	-	18.14	
MW-9	-	18.85	
MW-10	-	19.06	Black shaver Bail 1 Gall
RW-1	-	19.83	Black Shaver Bail 1 Gall

MW-1 + RW-1 Remove sock then measure

Bail 3 GALLS TOTAL mix Product/water

0745 offsite

APPENDIX B

GEOTRACKER UPLOAD CONFIRMATION

Electronic Submittal Information

[Main Menu](#) | [View/Add Facilities](#) | [Upload EDD](#) | [Check EDD](#)

UPLOADING A GEO_WELL FILE

Processing is complete. No errors were found!
Your file has been successfully submitted!

<u>Submittal Title:</u>	*11132*
<u>Facility Global ID:</u>	T0600100213
<u>Facility Name:</u>	BP #11132
<u>Submittal Date/Time:</u>	7/25/2007 9:03:48 AM
<u>Confirmation Number:</u>	5902699351

[Back to Main Menu](#)

Logged in as BROADBENT-C
(CONTRACTOR)

[CONTACT SITE ADMINISTRATOR](#)

Electronic Submittal Information

[Main Menu](#) | [View/Add Facilities](#) | [Upload EDD](#) | [Check EDD](#)

Your EDF file has been successfully uploaded!

Confirmation Number: 5303372085
Date/Time of Submittal: 7/3/2007 1:57:01 PM
Facility Global ID: T0600100213
Facility Name: BP #11132
Submittal Title: 2Q07 GW Monitoring
Submittal Type: GW Monitoring Report

Click [here](#) to view the detections report for this upload.

BP #11132 3201 35TH OAKLAND, CA 94619	Regional Board - Case #: 01-0227 SAN FRANCISCO BAY RWQCB (REGION 2) Local Agency (lead agency) - Case #: RO0000014 ALAMEDA COUNTY LOP - (SP)
--	---

<u>CONF #</u>	<u>TITLE</u>	<u>QUARTER</u>
5303372085	2Q07 GW Monitoring	Q2 2007
<u>SUBMITTED BY</u>	<u>SUBMIT DATE</u>	<u>STATUS</u>
Broadbent & Associates, Inc.	7/3/2007	PENDING REVIEW

SAMPLE DETECTIONS REPORT

# FIELD POINTS SAMPLED	5
# FIELD POINTS WITH DETECTIONS	5
# FIELD POINTS WITH WATER SAMPLE DETECTIONS ABOVE MCL	5
SAMPLE MATRIX TYPES	WATER

METHOD QA/QC REPORT

METHODS USED	8260FA,8260TPH
TESTED FOR REQUIRED ANALYTES?	Y
LAB NOTE DATA QUALIFIERS	Y

QA/QC FOR 8021/8260 SERIES SAMPLES

TECHNICAL HOLDING TIME VIOLATIONS	0
METHOD HOLDING TIME VIOLATIONS	0
LAB BLANK DETECTIONS ABOVE REPORTING DETECTION LIMIT	0
LAB BLANK DETECTIONS	0
DO ALL BATCHES WITH THE 8021/8260 SERIES INCLUDE THE FOLLOWING?	
- LAB METHOD BLANK	Y
- MATRIX SPIKE	N
- MATRIX SPIKE DUPLICATE	N
- BLANK SPIKE	Y
- SURROGATE SPIKE	Y

WATER SAMPLES FOR 8021/8260 SERIES

MATRIX SPIKE / MATRIX SPIKE DUPLICATE(S) % RECOVERY BETWEEN 65-135%	Y
MATRIX SPIKE / MATRIX SPIKE DUPLICATE(S) RPD LESS THAN 30%	Y
SURROGATE SPIKES % RECOVERY BETWEEN 85-115%	Y
BLANK SPIKE / BLANK SPIKE DUPLICATES % RECOVERY BETWEEN 70-130%	Y

SOIL SAMPLES FOR 8021/8260 SERIES

MATRIX SPIKE / MATRIX SPIKE DUPLICATE(S) % RECOVERY BETWEEN 65-135% n/a
MATRIX SPIKE / MATRIX SPIKE DUPLICATE(S) RPD LESS THAN 30% n/a
SURROGATE SPIKES % RECOVERY BETWEEN 70-125% n/a
BLANK SPIKE / BLANK SPIKE DUPLICATES % RECOVERY BETWEEN 70-130% n/a

FIELD QC SAMPLES

<u>SAMPLE</u>	<u>COLLECTED</u>	<u>DETECTIONS > REPD</u>
QCTB SAMPLES	N	0
QCEB SAMPLES	N	0
QCAB SAMPLES	N	0

Logged in as BROADBENT-C (CONTRACTOR)

CONTACT SITE ADMINISTRATOR.