



HUNTER ENVIRONMENTAL SERVICES, INC.
 18 GREAT VALLEY PARKWAY, SUITE 6
 MALVERN, PA 19355
 215-296-7380 800-523-4370

FINAL REPORT

leak lokator LD 2000

TEST RESULTS

DATE OF TEST <i>JUNE 27, 1986</i>
CONTRACT NUMBER

CUSTOMER <i>GRAFCO Petroleum</i>	
LOCATION - IDENTIFICATION NUMBER	NAME
ADDRESS <i>186 LEWELLING Blvd + Ashland Rd</i>	CITY <i>SAN LORENZO</i>
	STATE <i>CALIFORNIA</i>

TEST RESULTS SUMMARY								LEAK LOKATOR (TANK ONLY)	
SYSTEM	PRODUCT	TANK SIZE		WATER INCHES	LEAK LOKATOR RESULTS*			CONCL. CODE	
		GALLONS	DIA/MATL.		LEVEL INCHES	ALR GPH	CONCLUSION	RECOMMENDATIONS	LEFT TANK
1	SUPER	4000	76 F.G.	0	146	-0.21	TIGHT		1
2	REGULAR	4000	76 F.G.	0	135	+0.16	TIGHT		1

OTHER INFORMATION
NO Electricity

PRODUCT LINES - HYDROSTATIC PRESSURE TEST RESULTS									
NO.	SYSTEM	PRODUCT	TYPE OF PUMP		# APPLIED	MINUTES APPLIED	PRODUCT LOSS CC'S	PRODUCT LOSS GPH	CONCLUSION/ RESULT
			REMOTE	SUCTION					
1	SUPER			WAYNE					
2	REGULAR			WAYNE					

NOTE: On suction systems, NEVER put more than 15 psi on any pump system.

OTHER CONTRACTORS, OFFICIALS, CUSTOMER REPRESENTATIVES PRESENT

DETAIL OF TEST RESULTS													
NO.	SYSTEM	PRODUCT	TEST NO.	TEST LEVEL (INCHES)	TIME		LEAK RATE		TEMPERATURE COMPENSATION		ABSOLUTE LEAK RATE		GPH CRITERION
					LOCK START	DURATION (HRS. MIN.)	CC/DIV	CC/MIN	Δ F	CC/MIN	CC/MIN	GPH	
1	SUPER		1	146	10:20	14.5 MIN	4.875	+12.508	+0.080	+13.812	7.304	-0.21	N
2	REGULAR		1	135	09:55	19:45	2.498	+1.158	+0.001	+1.163	+1.995	+0.16	N

* LEVEL - INCHES FROM TANK BOTTOM TO TEST LEVEL
 ALR - ABSOLUTE LEAK RATE (MEASURED LEAK RATE - TEMPERATURE COMPENSATION) IN GALLONS PER HOUR
 CONCLUSION - NFPA 329 CRITERION OF ±0.05 GPH IS USED TO CERTIFY TIGHTNESS

CERTIFICATION		This is to certify that the above described tank systems were tested, using the HUNTER ENVIRONMENTAL SERVICES, INC. LEAK LOKATOR according to all standard operating procedures. Those indicated as tight meet the criterion established by the National Fire Protection Association Pamphlet 329 for Precision Testing.	
TESTS CONDUCTED BY		CERTIFIED BY	
TEST VAN NO. <i>LL-17</i>	TANK TESTING SPECIALIST <i>E. PRIZE A. QUACAN</i>	SIGNATURE <i>K. Boyer</i>	DATE <i>06-27-86</i>
	TANK TESTING SPECIALIST <i>K. Boyer</i>	NAME <i>KATHERINE E. BOYER</i>	TITLE <i>Team Manager</i>

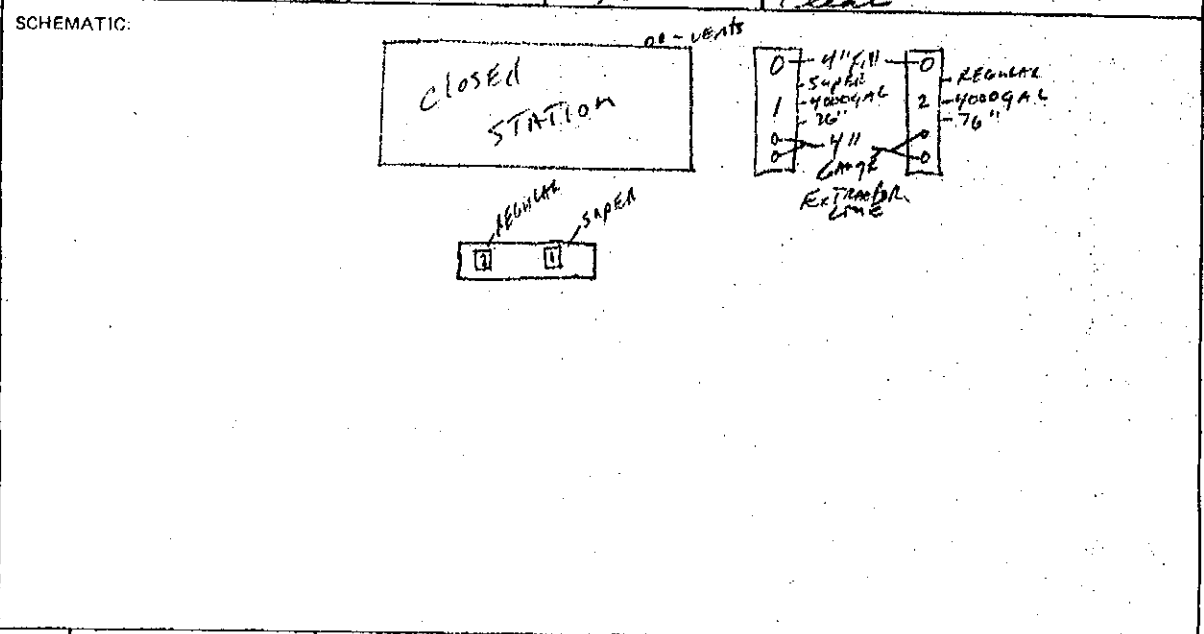
TANK AND LOCATION DATA

DATE: June 27, 1966

CUSTOMER: Graco Petroleum
 I.D. # 186 Swelling Blvd

CITY: San Lorenzo
 STATE: California

WEATHER	TIME	TEMPERATURE	COMMENTS
BEFORE TEST -	0730	65°	Cloudy
AFTER TEST -	1200	72°	Clear



	PRODUCT/TANK NO.	SUPER / 1		REGULAR / 2							
		Fill	Gauge	Fill	Gauge	Fill	Gauge	Fill	Gauge	Fill	Gauge
BEFORE DELIVERY	LEVEL	133		115							
	GALLONS	Full		Full							
	WATER	0		0							
	TOP OF RISER	126		118							
	GRADE	132		124							
	DROP TUBE	YES		YES							
	CAPACITY, GALLONS	4000		4000							
	DIAMETER, INCHES	76		76							
	MATERIAL	FIBERGLASS		FIBERGLASS							
	PUMP TYPE	WAYNE		WAYNE							
	TYPE OF COVER	CEMENT		CEMENT							
	AGE OF TANK	-		-							
	SIPHON	NO		NO							
	TANK OPENINGS	3		3							
	EXTRACTORS	2		2							
VAPOR RECOVERY	TYPE	P-1		P-1							
	VENT CONFIGURATION										
	P.V VENT VALVE TYPE	1		1							

REPLACEMENT PARTS:	PART #	DESCRIPTION	QUANTITY	PRICE
	633 TCP	Capical Adaptor	1	63.00
		4" Gaskets	6	2.00 EA

ADDITIONAL CHARGES: (pumpovers, overtime, etc.) _____

*Data obtained from Station LL Charts Other _____